
CONTENTS • INHOUD

<i>No.</i>		<i>Page No.</i>	<i>Gazette No.</i>
GENERAL NOTICE			
177	Local Government: Municipal Demarcation Act (27/1998): Notice in terms of section 21	3	1729

GENERAL NOTICE

NOTICE 177 OF 2007

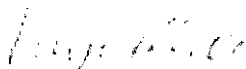
MUNICIPAL DEMARCATION BOARD
NOTICE IN TERMS OF SECTION 21 OF THE
LOCAL GOVERNMENT: MUNICIPAL
DEMARCATION ACT, 1998
(Eastern Cape)

Notice is hereby given in terms Section 21 of the Local Government: Municipal Demarcation Act, 1998 (Act No. 27 of 1998) the Municipal Demarcation Board has re-determined the outer boundaries of Amahlathi Local Municipality (EC 124) and Buffalo City Local Municipality (EC 125), by excluding the area of Tyutyu Village from Amahlathi Local Municipality (EC 124) and including it into Buffalo City Local Municipality (EC 125)

Any person aggrieved by this determination may submit objections within 30 days of publication of this notice to:

The Municipal Demarcation Board
Private Bag X 28
HATFIELD
0028
Fax: 012-3422480 or E-mail: robert@demarcation.org.za

Objections must be based on the criteria provided for in section 24 and 25 of the Demarcation Act. The relevant reference number (DEM/Map number) must be quoted in any correspondence with the Board



VUYO MLOKOTI
CHAIRPERSON: MUNICIPAL DEMARCATION BOARD
Reference: DEM141



MAP NUMBER:

DEM 141_A

DATE:

May 2007

Notice is hereby given in terms of Section 21 of the Local Government (Municipal) Demarcation Act (1998) (Act No. 27 of 1998) that the Municipal Demarcation Board has redetermined the municipal boundaries of Amathlathl Local Municipality (EC124) and Buffalo City Local Municipality (EC125), by excluding the area of Tyisoyi village from Amathlathl Local Municipality (EC124) and including it into Buffalo City Local Municipality (EC125).

Legend

- Main Place
- National Roads
- Main Roads
- Secondary Roads
- Railways
- Rivers
- DEM
- Local/Metro Municipalities
- District Management Areas
- District Municipalities

For a detailed map contact:

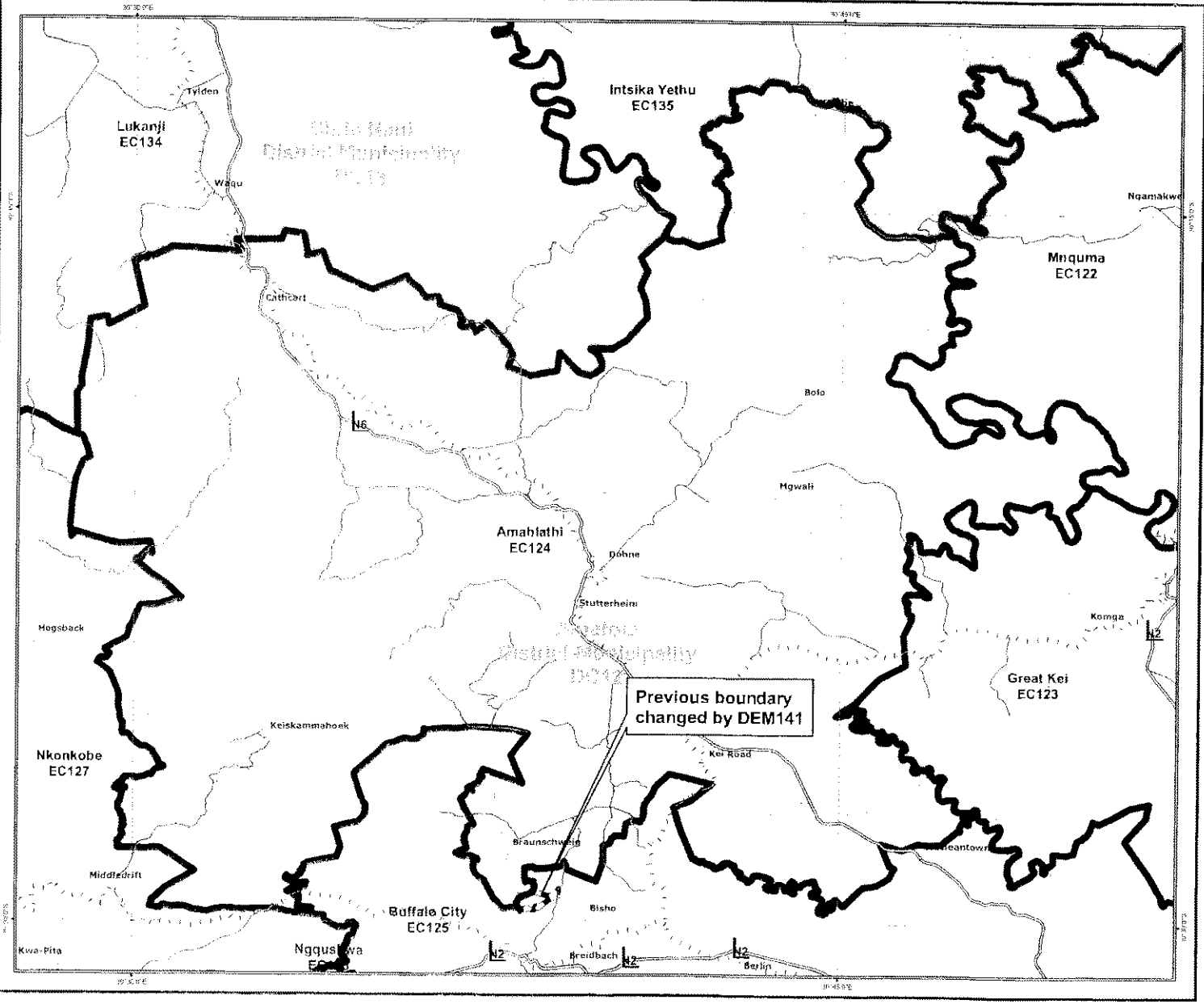
Mzwane Ramagadza

tel: (0)21 342 2181

fax: (0)21 342 2480

e-mail: uzwazi@dema.org.za

web: www.demarcation.org.za



Previous boundary changed by DEM141



MAP NUMBER:

DEM 141 B

DATE:

May 2007

Notice is hereby given in terms of Section 21 of the Local Government Municipal Demarcation Act, 1998 (Act No. 27 of 1998) that the Municipal Demarcation Board has re-determined the municipal boundaries of Amathathi Local Municipality (EC124) and Buffalo City Local Municipality (EC125), by excluding the area of Tyulya Village from Amathathi Local Municipality (EC124) and including it into Buffalo City Local Municipality (EC125).

Legend

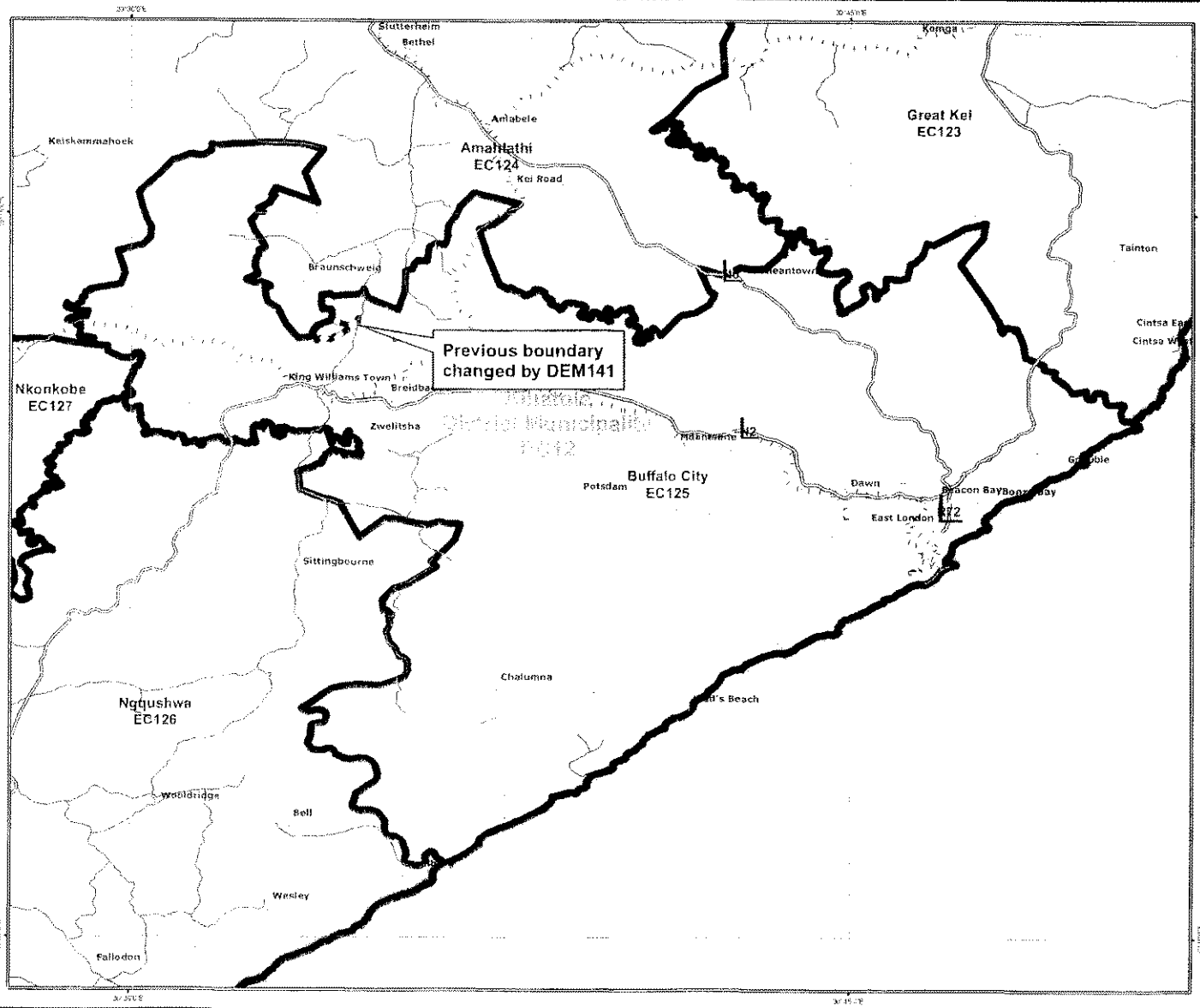
- Main Place
- National Roads
- Main Roads
- Secondary Roads
- Railways
- Rivers
- DEM
- Local/Metro Municipalities
- District Management Areas
- District Municipalities

For a detailed map contact:

Telephone: 031 262 2400
 Fax: 031 262 2481
 Cell: 031 262 2450

E-mail: enquiries@demarcation.org.za

Web: www.demarcation.org.za





MAP NUMBER:

DEM 141_C

DATE:

May 2007

Notice is hereby given in terms of Section 21 of the Local Government Municipal Demarcation Act, 1998 (Act No. 27 of 1998) that the Municipal Demarcation Board has re-determined the municipal boundaries of Amahlathi Local Municipality (EC124) and Buffalo City Local Municipality (EC125), by including the area of Tyeluyi Farms from Amahlathi Local Municipality (EC124) and including it into Buffalo City Local Municipality (EC125).

Legend

- Main Place
- National Roads
- Main Roads
- Secondary Roads
- Railways
- Rivers
- DEM
- Local/Metro Municipalities
- District/Management Areas
- District/Municipalities

For a detailed map contact:

Swam Ramagadza

tel: (012) 342 2481

fax: (012) 342 2480

e-mail: sluvand@demarcation.org.za

web: www.demarcation.org.za

