

PROVINCE OF THE EASTERN CAPE
IPHONDO LEMPUMA KOLONI
PROVINSIE OOS-KAAP

**Provincial Gazette
Igazethi Yephondo
Provinsiale Koerant**

Vol. 14

**BISHO/
KING WILLIAM'S TOWN, 1 NOVEMBER 2007**

**No. 1792
(Extraordinary)**

CONTENTS • INHOUD

No.

*Page
No. Gazette
 No.*

GENERAL NOTICE

391	Local Government: Municipal Demarcation Act (27/1998): Municipal Demarcation Board: Notice in terms of section 21.....	3	1792
-----	--	---	------

GENERAL NOTICE

No. 391



MUNICIPAL DEMARCATION BOARD

MUNICIPAL DEMARCATION BOARD

NOTICE IN TERMS OF SECTION 21 OF THE LOCAL GOVERNMENT: MUNICIPAL DEMARCATION ACT, 1998

(Eastern Cape)

In terms section 21 of the Local Government: Municipal Demarcation Act, 1998 (Act No.27 of 1998) the Municipal Demarcation Board has re-determined the municipal boundaries of Mquma Local Municipality (EC122), and Mbhashe Local Municipality (EC121) by excluding the eGqukesi Location from Mquma Local Municipality (EC122) and including it into Mbhashe Local Municipality (EC121).

Any person aggrieved by this determination may submit objections within 30 days of publication of this notice to:

The Municipal Demarcation Board

Private Bag X 28

HATFIELD

0028

Fax: 012-3422480 or E-mail: robert@demarcation.org.za

Please quote reference number **DEM349** in any correspondence with the Board.

DR. VUYO MLOKOTI

CHAIRPERSON: MUNICIPAL DEMARCATION BOARD

Reference: DEM349



MAP NUMBER

DEM 349_A

DATE

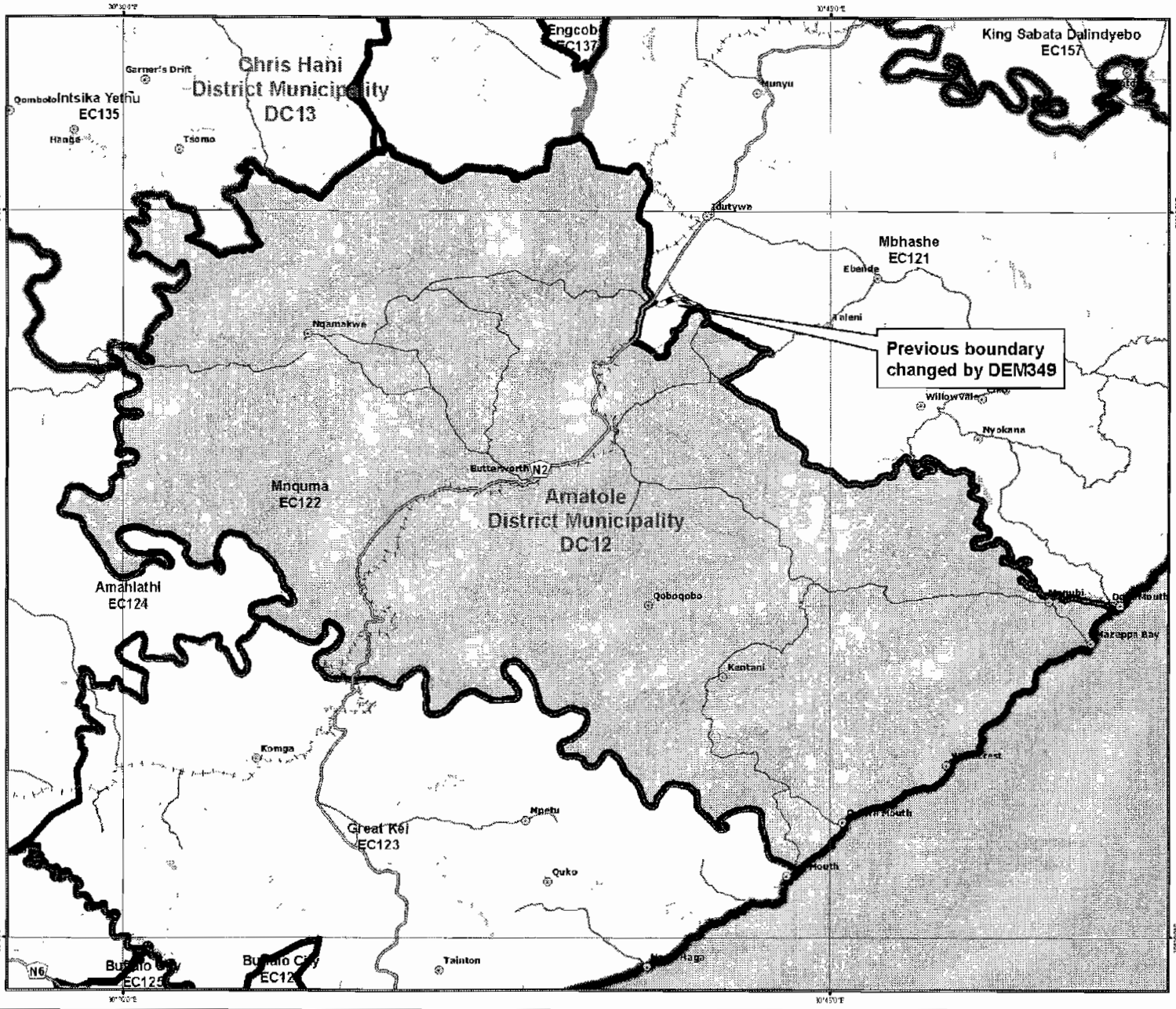
September 2007

Notice is hereby given in terms of Section 21 of the Local Government Municipal Demarcation Act 1998 (Act No. 27 of 1998) that the Municipal Demarcation Board has determined the municipal boundaries of Mbhashe Local Municipality (EC 121) and Mquma Local Municipality (EC 122) by excluding the area located from Mquma Local Municipality (EC 122) and including them into Mbhashe Local Municipality (EC 121).

Legend

- Main Place
- National Roads
- Main Roads
- Secondary Roads
- Railways
- Rivers
- DEM
- Local/Metro Municipalities
- District Management Areas
- District Municipalities

For a detailed map contact
 Alwyn Ramagatla
 tel: (012) 342 0381
 fax: (012) 342 0380
 email: alw@demarcation.org.za
 www.demarcation.org.za





MAP NUMBER
DEM 349_B

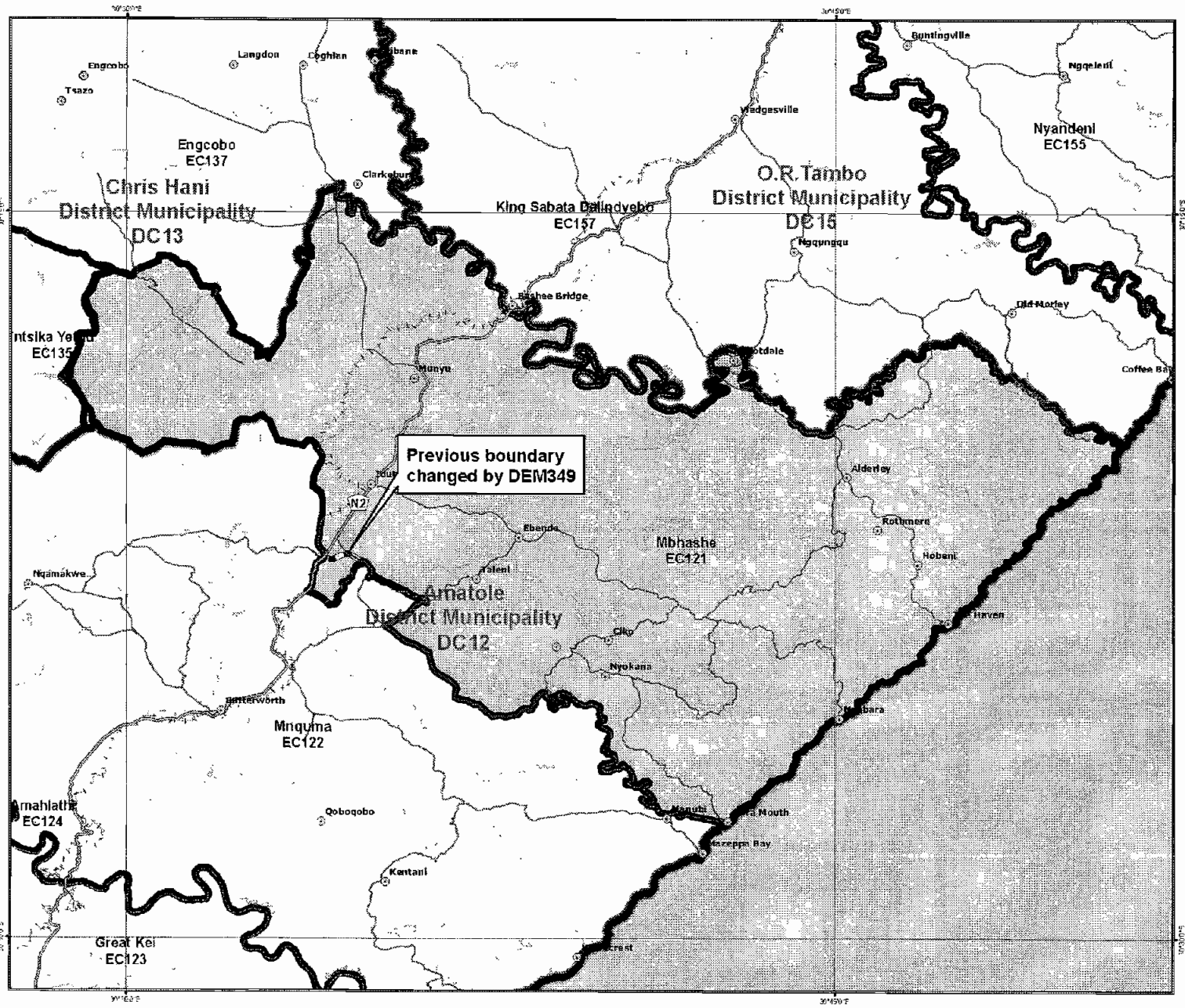
DATE
September 2007

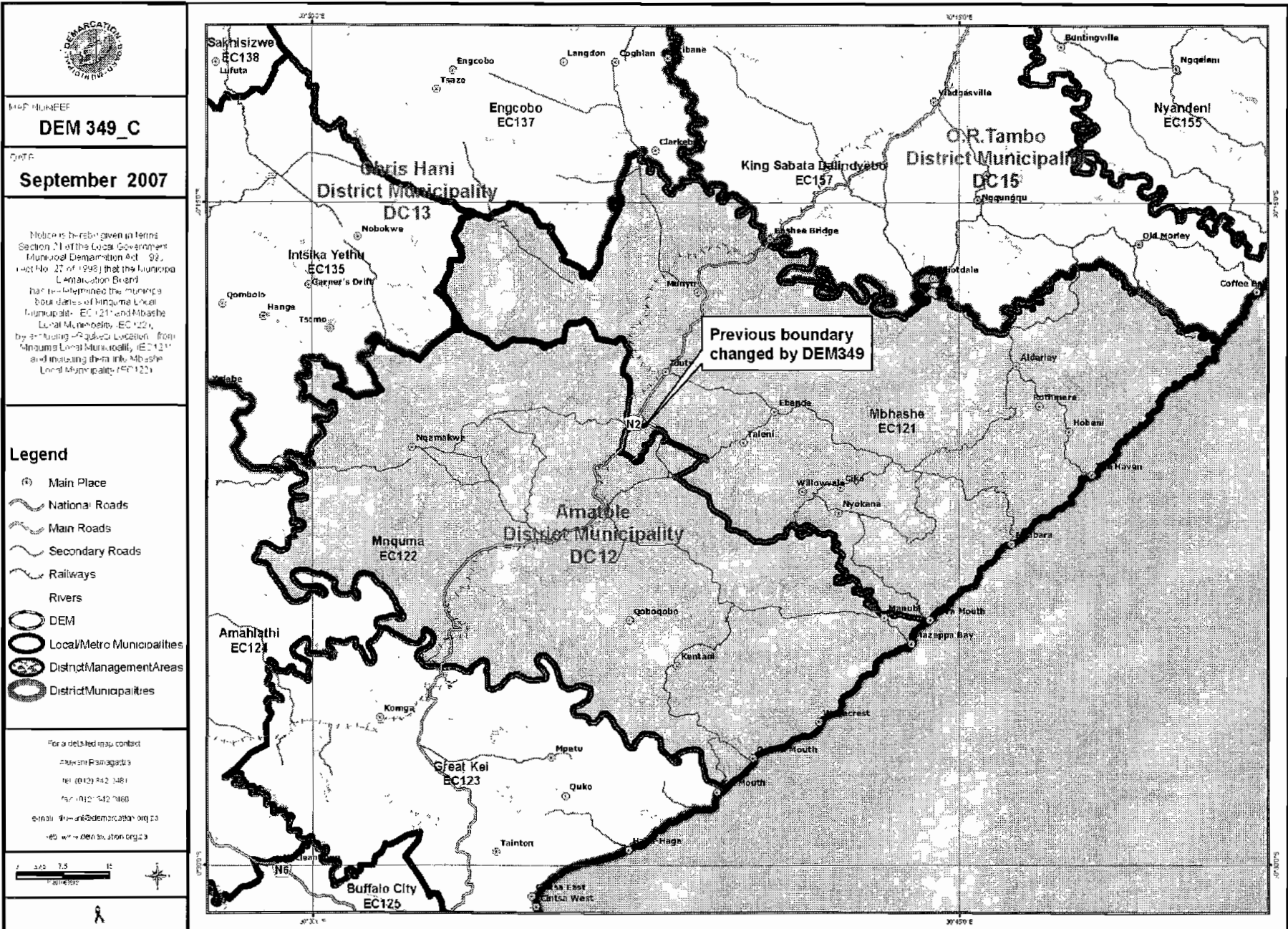
NOTICE is hereby given in terms of Section 21 of the Local Government Municipal Demarcation Act, 1998 (Act No. 27 of 1998) that the Municipal Demarcation Board has re-determined the municipal boundaries of Mquma Local Municipality (EC121) and Mbashe Local Municipality (EC122) by excluding eGqokezi Location from Mquma Local Municipality (EC121) and including them into Mbashe Local Municipality (EC122).

Legend

- ⊙ Main Place
- National Roads
- Main Roads
- Secondary Roads
- Railways
- Rivers
- DEM
- Local/Metro Municipalities
- District Management Areas
- District Municipalities

For a detailed map contact:
Muzila Pamaashe
tel: +27 31 942 2490
fax: +27 31 942 2490
e-mail: demarc@demarcation.org.za
web: www.demarcation.org.za





MAP NUMBER
DEM 349_C

DATE
September 2007

Notice is hereby given in terms of Section 21 of the Local Government Municipal Demarcation Act, 1998 (Act No. 27 of 1998) that the Municipal Demarcation Board has determined the municipal boundaries of Kingama Local Municipality (EC 121) and Mbashe Local Municipality (EC 122), by transferring the area located from Kingama Local Municipality (EC 121) and including them into Mbashe Local Municipality (EC 122).

Legend

- (*) Main Place
- National Roads
- Main Roads
- Secondary Roads
- Railways
- Rivers
- DEM
- Local/Metro Municipalities
- District Management Areas
- District Municipalities

For a detailed map contact
 Anselmi Erasmus
 tel: (012) 542 7481
 fax: (012) 542 7460
 e-mail: ansel@demarcation.org.za
 web: www.demarcation.org.za

