

PROVINCE OF THE EASTERN CAPE
IPHONDO LEMPUMA KOLONI
PROVINSIE OOS-KAAP

**Provincial Gazette
Igazethi Yephondo
Provinsiale Koerant**

Vol. 15

BISHO/
KING WILLIAM'S TOWN, 30 MAY 2008

No. 1905
(Extraordinary)

CONTENTS

<i>No.</i>		<i>Page No.</i>	<i>Gazette No.</i>
GENERAL NOTICE			
166	Local Government: Municipal Demarcation Act (27/1998) read with the Local Government: Municipal Structures Act (117/1998): Municipal Demarcation Board: Notice in terms of section 21	3	1905
166	Wet op Plaaslike Regering: Munisipale Afbakening (27/1998): saamgelees met die Wet op Plaaslike Regering: Munisipale Strukture (117/1998): Munisipale Afbakeningsraad: Kennisgewing ingevolge artikel 21	4	1905

GENERAL NOTICE

NOTICE 166 OF 2008

**MUNICIPAL DEMARCATION BOARD
NOTICE IN TERMS OF SECTION 21 OF THE LOCAL GOVERNMENT: MUNICIPAL
DEMARCATION ACT, 1998, READ WITH SECTION 2 & 4 OF THE LOCAL
GOVERNMENT: MUNICIPAL STRUCTURES ACT, 1998
(Eastern Cape)**

Notice is hereby given in terms of section 21 of the Local Government: Municipal Demarcation Act, 1998 (Act No. 27 of 1998), read with section 2 and 4 of the Local Government: Municipal Structures Act (Act 117 of 1998) that the Municipal Demarcation Board's has:

- a) re-determined the boundaries of Amatole District Municipality (DC12) by excluding the municipal area of Buffalo City Local Municipality (EC125) from the district area;
- b) determined that the area within the current boundaries of Buffalo City Local Municipality must have a category A municipality.

Members of the public are invited to submit written representations and views to:

**The Municipal Demarcation Board
Private Bag X 28
Hatfield
0028
Fax: 012-3422480
E-mail: robert@demarcation.org.za**

Objections must reach the above office *within 30 days of the date of publication of this notice.*

Objections must be based on the criteria provided for in Section 2 of the Structures Act, 1998, and Sections 24 and 25 of the Demarcation Act, 1998.

Reference number **DEM388** must be quoted in any correspondence with the Board.

**VUYO MLOKOTI
CHAIRPERSON: MUNICIPAL DEMARCATION BOARD
Reference: DEM388**

KENNISGEWING 166 VAN 2008**MUNISIPALE AFBAKENINGSRAAD
KENNISGEWING INGEVOLGE ARTIKEL 21 VAN DIE WET OP PLAASLIKE
REGERING: MUNISIPALE AFBAKENING, 1998, SAAMGELEES MET
ARTIKELS 2 EN 4 VAN DIE WET OP PLAASLIKE REGERING: MUNISIPALE
STRUKTURE, 1998
(Oos-Kaap)**

Ingevolge artikel 21 van die Wet op Plaaslike Regering: Munisipale Afbakening, 1998 (Wet No. 27 van 1998), saamgelees met artikels 2 en 4 van die Wet op Plaaslike Regering: Munisipale Strukture, 1998 (Wet No. 117 van 1998) word hiermee kennis gegee dat die Munisipale Afbakeningraad:

- a) die munisipale grense van Amatole Distriksmunisipaliteit (DC22) herbepaal het deur die munisipale gebied van Buffalo City Plaaslike Munisipaliteit (KZN225) uit te sluit van die distriksgebied;
- b) bepaal het dat die gebied binne die bestaande grense van Buffalo City Plaaslike Munisipaliteit 'n Kategorie A munisipaliteit moet hê.

Die publiek word hiermee uitgenooi om skriftelike besware te stuur aan:

Die Munisipale Afbakeningsraad
Privaatsak X 28
HATFIELD
0028
Faks: 012-3422480
E-pos: robert@demarcation.org.za

Skriftelike besware moet die Raad bereik ***binne 30 dae vanaf die datum van publikasie van hierdie kennisgewing.***

Besware moet gebaseer wees op die kriteria waarvoor in Artikel 2 van die Strukturewet, 1998, en in Artikels 24 en 25 van die Afbakeningswet, 1998, voorsiening gemaak word.

Verwysingsnommer DEM 388 moet asseblief verstrek word in enige korrespondensie met die Raad.

VUYO MLOKOTI
VOORSITTER: MUNISIPALE AFBAKENINGSRAAD
Verwysing: DEM388



REP NUMBER

DEM388_A

DATE

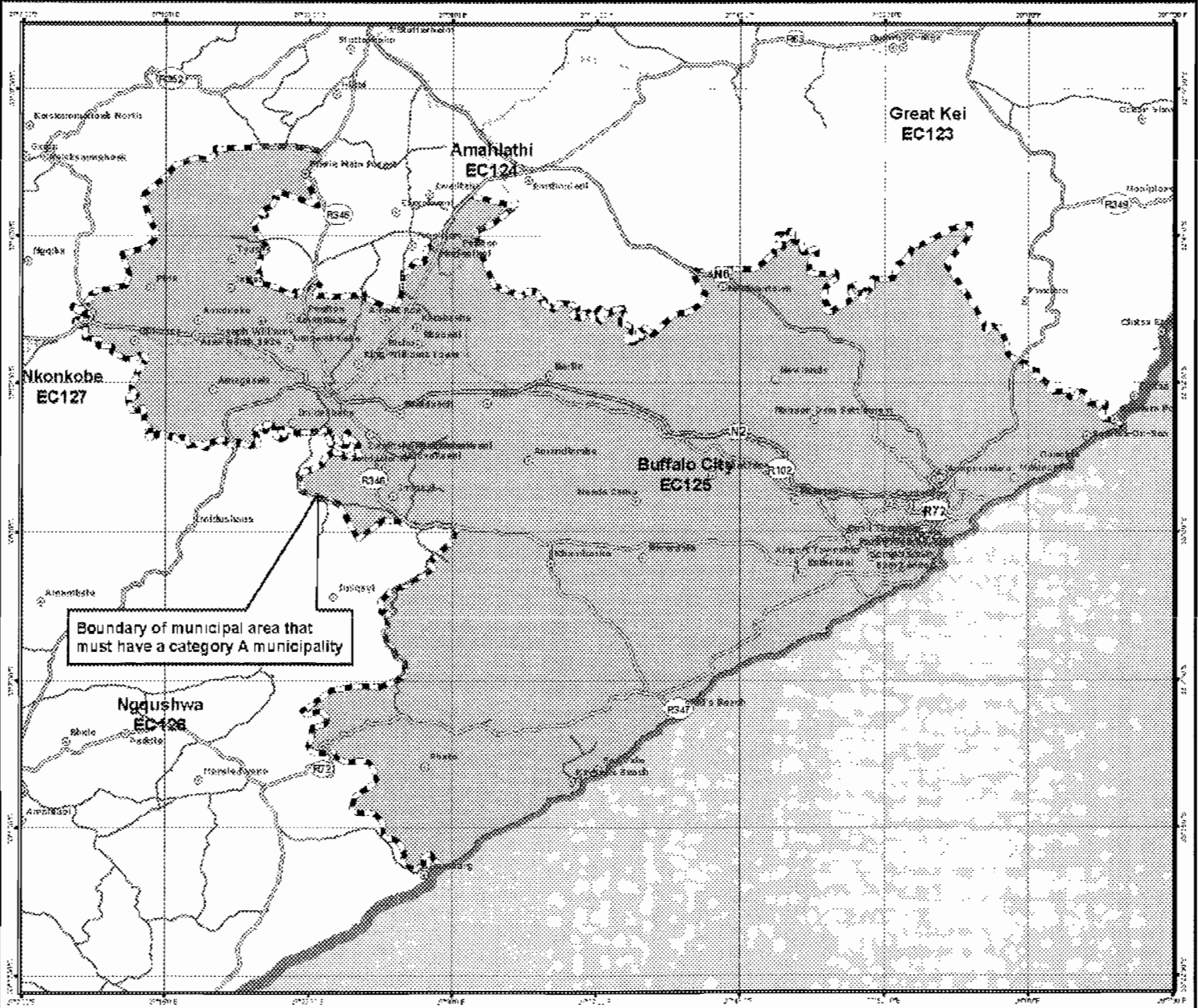
May 2008

As per a request from the Council of the Local Government Forum to the Department of Environmental Affairs and Tourism, made in section 7 of the Local Government Municipal Structures Act (Act 117 of 1998), the Municipal Demarcation Board has determined that the area within the current boundaries of Buffalo City Local Municipality must have a category A municipality.

Legend

- Main Place
- National Roads
- Main Roads
- Secondary Roads
- Railways
- Rivers
- DEM
- Local/Metro Municipalities
- District Management Areas
- District Municipalities

For details of map content
 Visit the website
 http://www.dema.gov.za
 or call 021 534 5400
 or email dema@ema.gov.za
 web: www.dema.gov.za



Boundary of municipal area that must have a category A municipality

