

PROVINCE OF THE EASTERN CAPE
IPHONDO LEMPUMA KOLONI
PROVINSIE OOS-KAAP

Provincial Gazette
Igazethi Yephondo
Provinsiale Koerant

Vol. 15

BISHO/
KING WILLIAM'S TOWN, 20 AUGUST 2008

No. 1962
(Extraordinary)

CONTENTS • INHOUD

<i>No.</i>		<i>Page No.</i>	<i>Gazette No.</i>
GENERAL NOTICE • ALGEMENE KENNISGEWING			
296	Local Government: Municipal Demarcation Act (27/1998) (Eastern Cape): Municipal Demarcation Board: Notice in terms of section 21 (5).....	2	1962
	Wet op Plaaslike Regering: Munisipale Afbakening (27/1998) (Oos-Kaap): Munisipale Afbakeningsraad: Kennisgewing ingevolge artikel 21 (5).....	3	1962

GENERAL NOTICE

NOTICE 296 OF 2008

**MUNICIPAL DEMARCATION BOARD
NOTICE IN TERMS OF SECTION 21(5) OF THE LOCAL GOVERNMENT:
MUNICIPAL DEMARCATION ACT, 1998 (ACT NO. 27 OF 1998)
(Eastern Cape)**

In terms of Section 21(5) of the Local Government: Municipal Demarcation Act, 1998, the Municipal Demarcation Board has decided to vary the re-determination of the municipal boundaries published, under reference DEM175, in Notice No. 78, Provincial Gazette No. 1863 dated 2 April 2008, by the substitution for Maps 175_A, 175_B, 175_C and 175_D, of the attached Maps 175_A, 175_B, 175_C and 175_D; and by the substitution for the description of DEM175 in the third column of the Schedule, of the following description:

- "Re-determination of municipal boundaries by excluding Caba Administrative Area and the area around the Thornville Junior Secondary School voting station, from the municipal areas of Intsika Yethu Local Municipality and Chris Hani District Municipality, and by including the areas into the municipal areas of Mbashe Local Municipality and Amantole District Municipality.
- Re-determination of municipal boundaries by excluding the areas Xonye, Cwecweni, Ngqutura, Nxamangele, and the remaining area of Mqonci from the municipal area of Intsika Yethu Local Municipality, and by including them into the municipal area of Engcobo Local Municipality"

**VUYO MLOKOTI
CHAIRPERSON: MUNICIPAL DEMARCATION BOARD
Reference: DEM175**

ALGEMENE KENNISGEWING 296 VAN 2008**MUNISIPALE AFBAKENINGSRAAD
KENNISGEWING INGEVOLGE ARTIKEL 21(5) VAN DIE WET OP PLAASLIKE
REGERING: MUNISIPALE AFBAKENING, 1998 (WET NO. 27 VAN 1998)
(Oos-Kaap)**

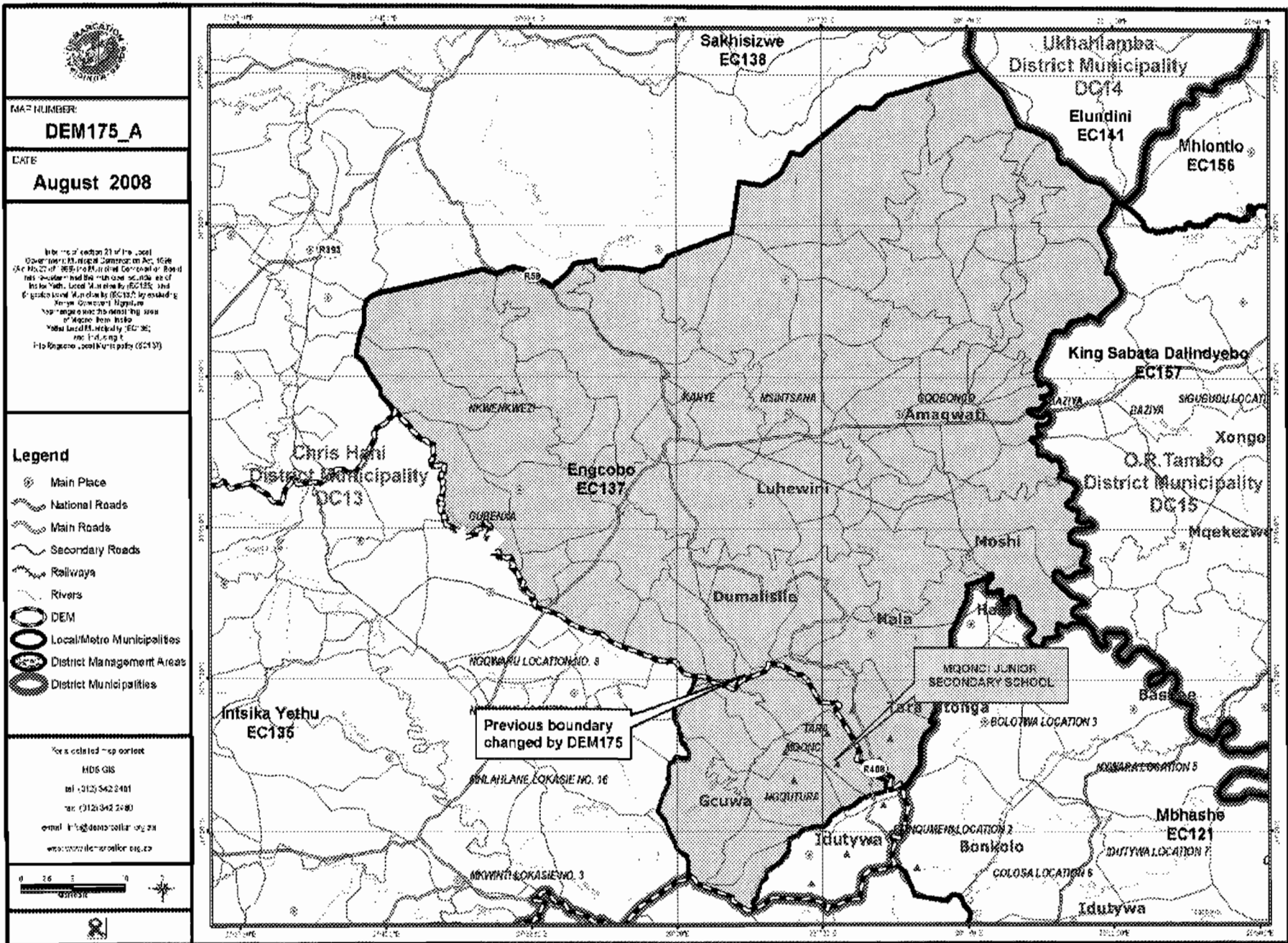
Ingevolge artikel 21(5) van die Wet op Plaaslike Regering: Munisipale Afbakening, 1998 (Wet No. 27 van 1998), het die Munisipale Afbakeningraad besluit om die herafbakening van die munisipale grense wat in Kennisgewingsnommer 78, Provinsiale Koerant No. 1863 van 2 April 2008, gepubliseer was, te wysig, deur kaarte 175_A, 175_B, 175_C en 175_D, te vervang met die bygaande kaarte 175_A, 175_B, 175_C en 175_D; en deur die beskrywing van DEM175 in kolom drie van die Bylae te vervang met die volgende beskrywing:

- “Herbepaling van munisipale grense deur die Caba Administratiewe gebied en die gebied rondom die Thornville Junior Hoërskool stemdistrik, uit te sluit van die munisipale gebiede van Intsika Yethu Plaaslike Munisipaliteit en Chris Hani Distriksmunisipaliteit, en die gebiede in te sluit in die munisipale gebiede van Mbashe Plaaslike Munisipaliteit en Amantole Distriksmunisipaliteit.
- Herbepaling van munisipale grense deur die gebiede van Xonye, Cwecweni, Ngqutura, Nxamangele en die restant van die Mqoncigebied uit te sluit van die munisipale gebied van Intsika Yethu Plaaslike Munisipaliteit, en die gebiede in te sluit in die munisipale gebied van Engcobo Plaaslike Munisipaliteit”

VUYO MLOKOTI

VOORSITTER: MUNISIPALE AFBAKENINGSRAAD

Verwysing: DEM175



MAP NUMBER:
DEM175_A

DATE:
August 2008

In terms of section 21 of the 2000 Governance Structures Amendment Act, 1999 (Act No. 22 of 1999) the Provincial Council has decided to amend the boundaries of the local municipalities EC137 and EC138. The boundaries of the local municipalities EC137 and EC138 are hereby amended to the boundaries shown on this map. The boundaries of the local municipalities EC137 and EC138 are hereby amended to the boundaries shown on this map.

Previous boundary changed by DEM175



MAP NUMBER:
DEM175_B

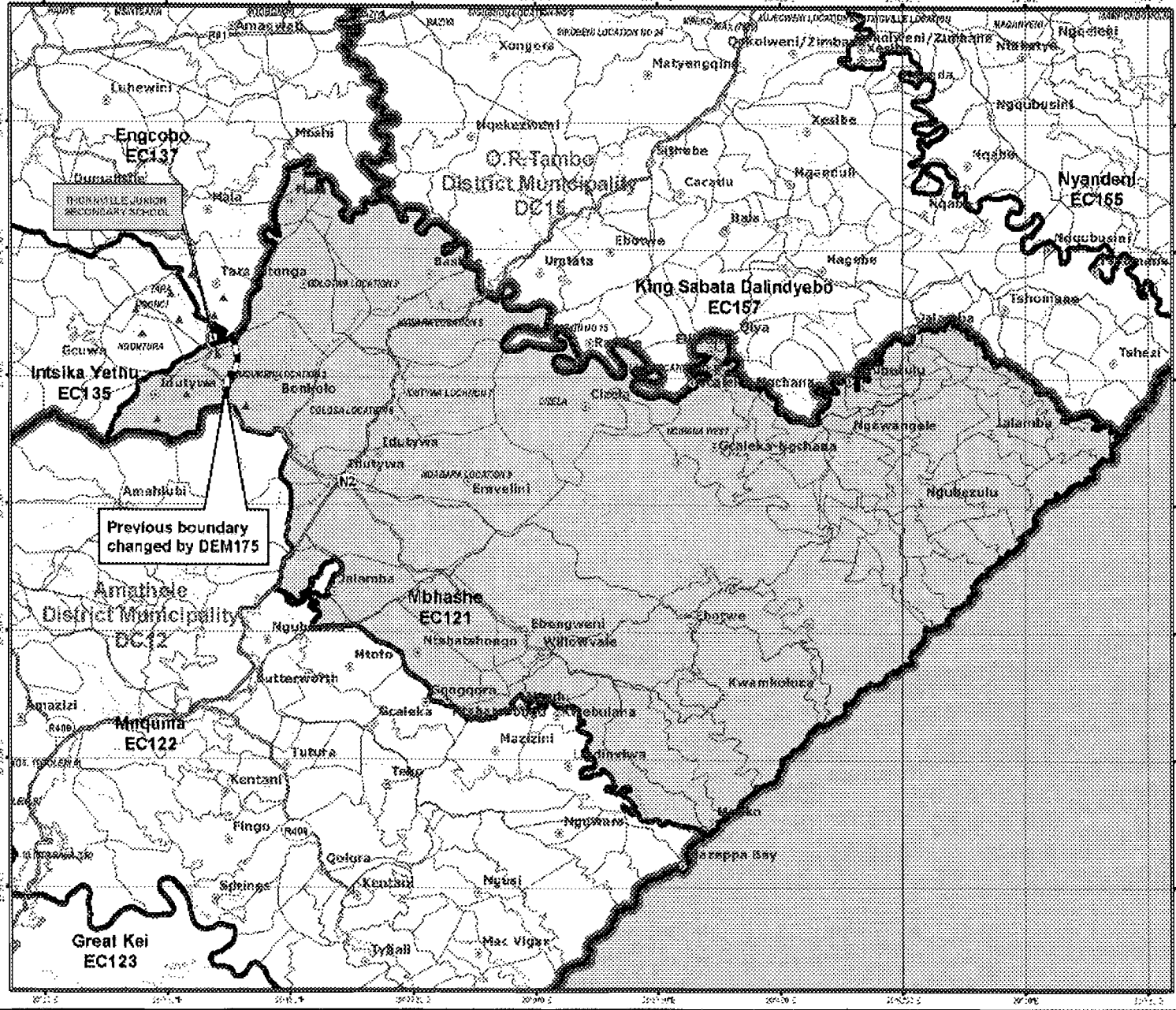
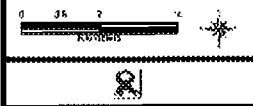
DATE:
August 2008

Items included: 2 of the Local Government: Municipal Demarcation Act, 1998 (Act No 27 of 1998); the Municipal Demarcation Board has a demarcated the 175 districts and 175 Local Municipalities (EC123, EC124, EC125, EC126, EC127, EC128, EC129, EC130, EC131, EC132, EC133, EC134, EC135, EC136, EC137, EC138, EC139, EC140, EC141, EC142, EC143, EC144, EC145, EC146, EC147, EC148, EC149, EC150, EC151, EC152, EC153, EC154, EC155, EC156, EC157, EC158, EC159, EC160, EC161, EC162, EC163, EC164, EC165, EC166, EC167, EC168, EC169, EC170, EC171, EC172, EC173, EC174, EC175).

Legend

- Main Place
- National Roads
- Main Roads
- Secondary Roads
- Railways
- Rivers
- DEM
- Local/Metro Municipalities
- District Management Areas
- District Municipalities

For a detailed map contact:
MDS GIS
Tel: (012) 342 2401
Fax: (012) 342 2480
Email: info@mds.gov.za
www.mds.gov.za





MFP NUMBER

DEM176_C

DATE

August 2008

Site of Section 21 of the Local Government Municipal Demarcation Act 1998 (Act 107 of 1998) for the Municipality of Chris Hani District Municipality, Eastern Cape. The map shows the boundaries of the following Municipalities: Chris Hani District Municipality (DC10), Amathole District Municipality (DC12), Buffalo City Municipality (EC125), Great Kei Municipality (EC123), Nquthu Municipality (EC126), Nkomo Municipality (EC127), Nxuba Municipality (EC128), Amathole District Municipality (DC12), and Buffalo City Municipality (EC125). The map also shows the boundaries of the following District Management Areas: Nquthu (EC126), Nkomo (EC127), Nxuba (EC128), Amathole (DC12), and Buffalo City (EC125). The map is a vector map and is not to scale. It is a technical drawing and is not to be used for any other purpose without the written consent of the Department of Provincial Administration.

Legend

- Main Place
- National Roads
- Main Roads
- Secondary Roads
- Railways
- Rivers
- DEM
- Local/Metro Municipalities
- District Management Areas
- District Municipalities

Files related to this project

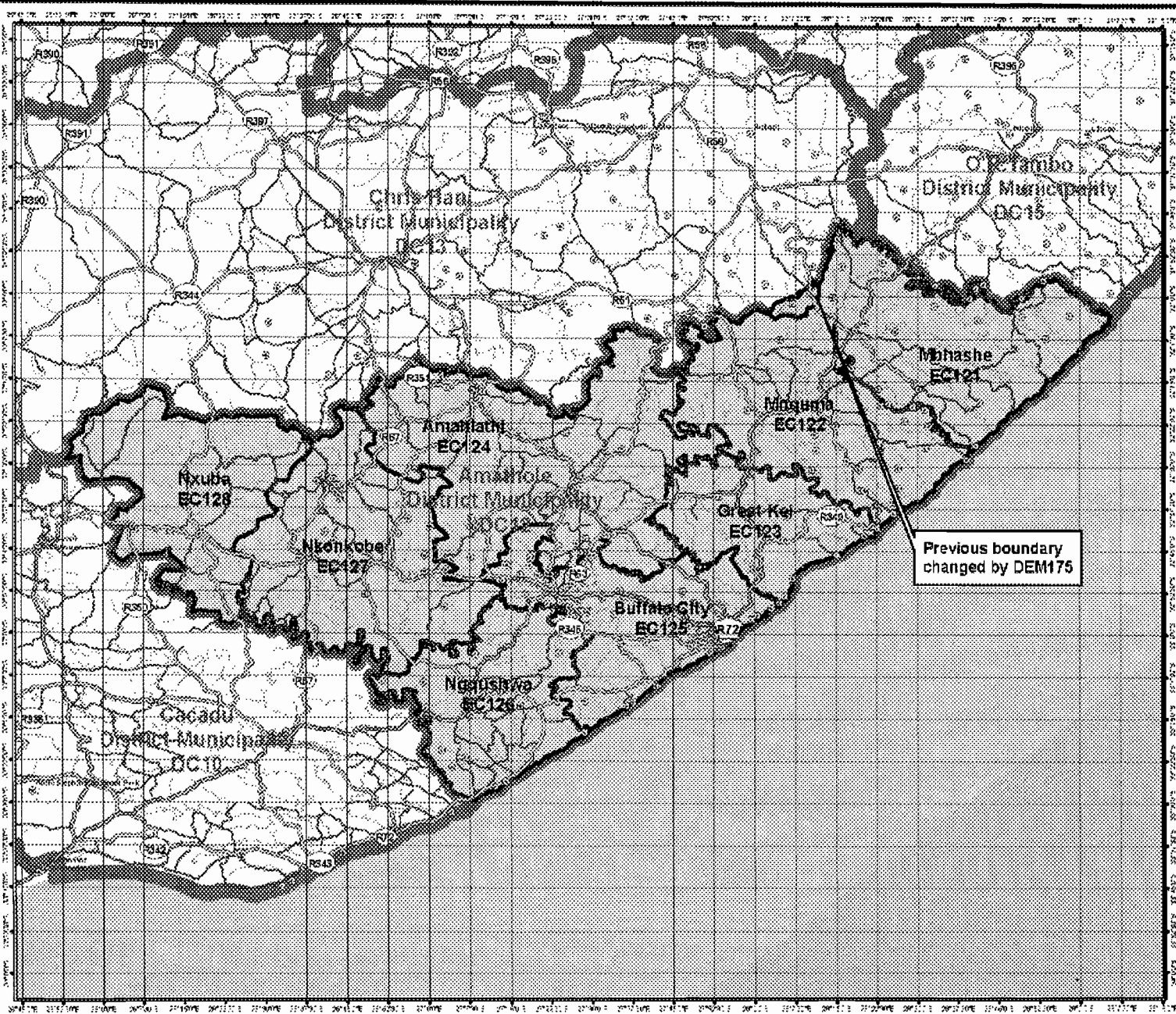
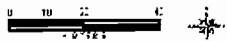
V08 08

tel: (011) 546 5491

fax: (011) 546 5498

email: info@demarcation.org.za

web: www.demarcation.org.za





MAP NUMBER

DEM175_D

DATE

August 2008

In terms of section 21 of the Local Government Municipal Demarcation Act 1998 (No. 107 of 1998) the Department of Agriculture, Forestry and Fisheries has designated the following Local Government Municipalities for the purpose of the 2008 Local Government Municipal Demarcation Review: the 12 existing Local Municipalities and 7 new Local Municipalities. This review is part of a broader process to rationalise the number and boundaries of Local Municipalities in South Africa. The boundaries of the new Local Municipalities are shown on this map. The boundaries of the existing Local Municipalities are shown on this map as a dotted line. The boundaries of the new Local Municipalities are shown on this map as a solid line. The boundaries of the District Management Areas are shown on this map as a dashed line. The boundaries of the District Municipalities are shown on this map as a thick solid line.

Legend

- Main Place
- National Roads
- Main Roads
- Secondary Roads
- Railways
- Rivers
- DEM
- Local/Metro Municipalities
- District Management Areas
- District Municipalities

For a detailed map contact:

031 284 4444

031 284 4444

031 284 4444

031 284 4444

031 284 4444

