

PROVINCE OF THE EASTERN CAPE
IPHONDO LEMPUMA KOLONI
PROVINSIE OOS-KAAP

**Provincial Gazette
Igazethi Yephondo
Provinsiale Koerant**

Vol. 15

BISHO/
KING WILLIAM'S TOWN, 10 OCTOBER 2008

No. 1996
(Extraordinary)

CONTENTS • INHOUD

<i>No.</i>		<i>Page No.</i>	<i>Gazette No.</i>
	GENERAL NOTICE		
358	Local Government: Municipal Structures Act (117/1998): Municipal Demarcation Board: Re-delimitation of the boundaries of certain wards.....	3	1996

GENERAL NOTICE

NOTICE 358 OF 2008

MUNICIPAL DEMARCATION BOARD RE-DELIMITATION OF THE BOUNDARIES OF CERTAIN WARDS (Province: Eastern Cape)

As a result of the re-determination of the boundaries of certain municipalities since the local elections held on 1 March 2006, the boundaries of certain wards, referred to in the Schedule, have been re-delimited.

This is a temporary arrangement. All wards boundaries will again be reviewed during 2009/2010 for the 2011 local elections.

In terms of item 5 of Schedule 1 of the Local Government: Municipal Structures Act, 1998 (Act No.117 of 1998) the Municipal Demarcation Board hereby publishes maps of the wards of which the boundaries have been re-delimited to accommodate the changes to municipal boundaries.

Any person aggrieved by a re-delimitation may within 14 days of publication of this notice submit objections in writing to:

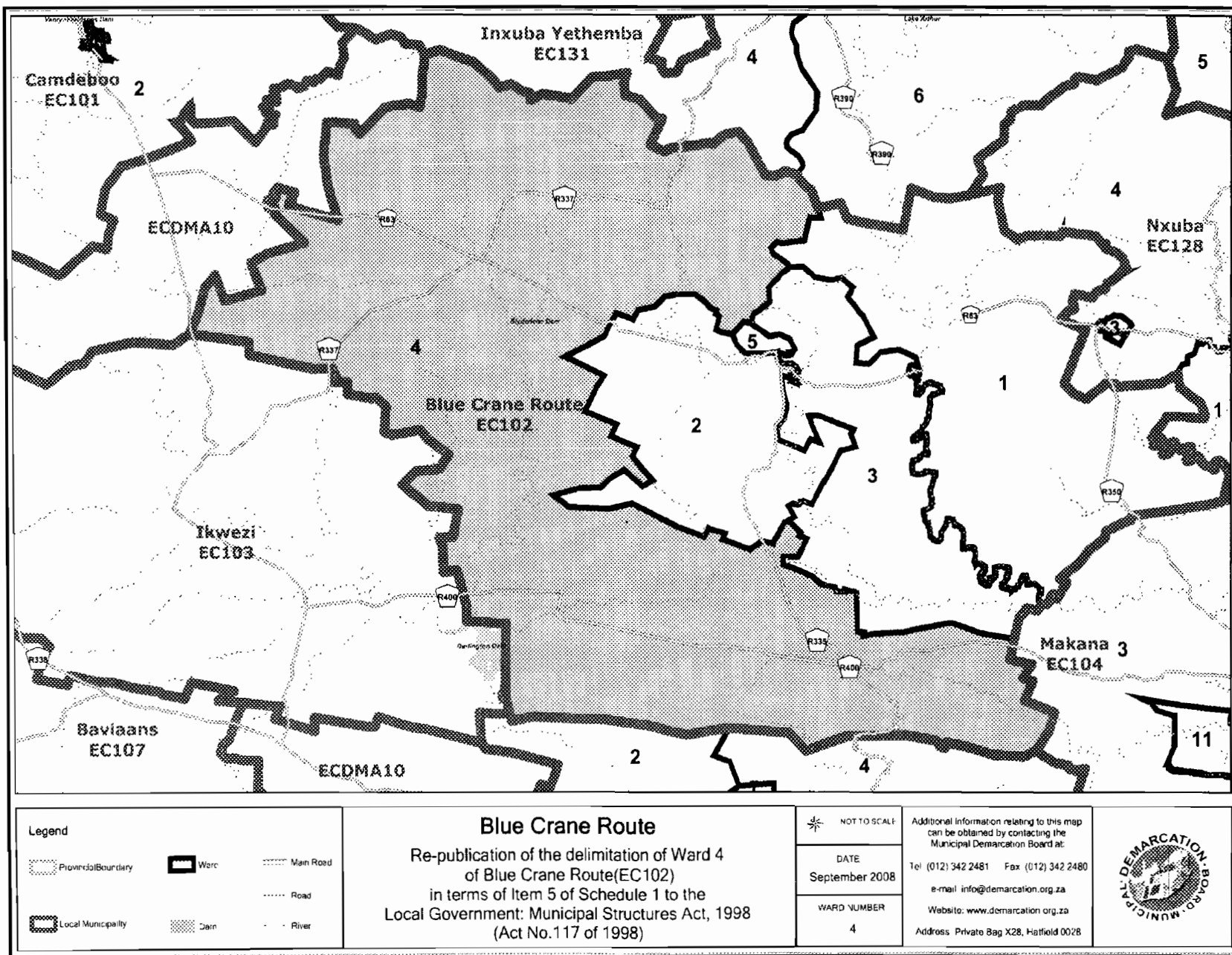
The Municipal Demarcation Board
Private Bag X28
Hatfield
0028
Fax: 012-3422480
E-mail: Robert@demarcation.org.za

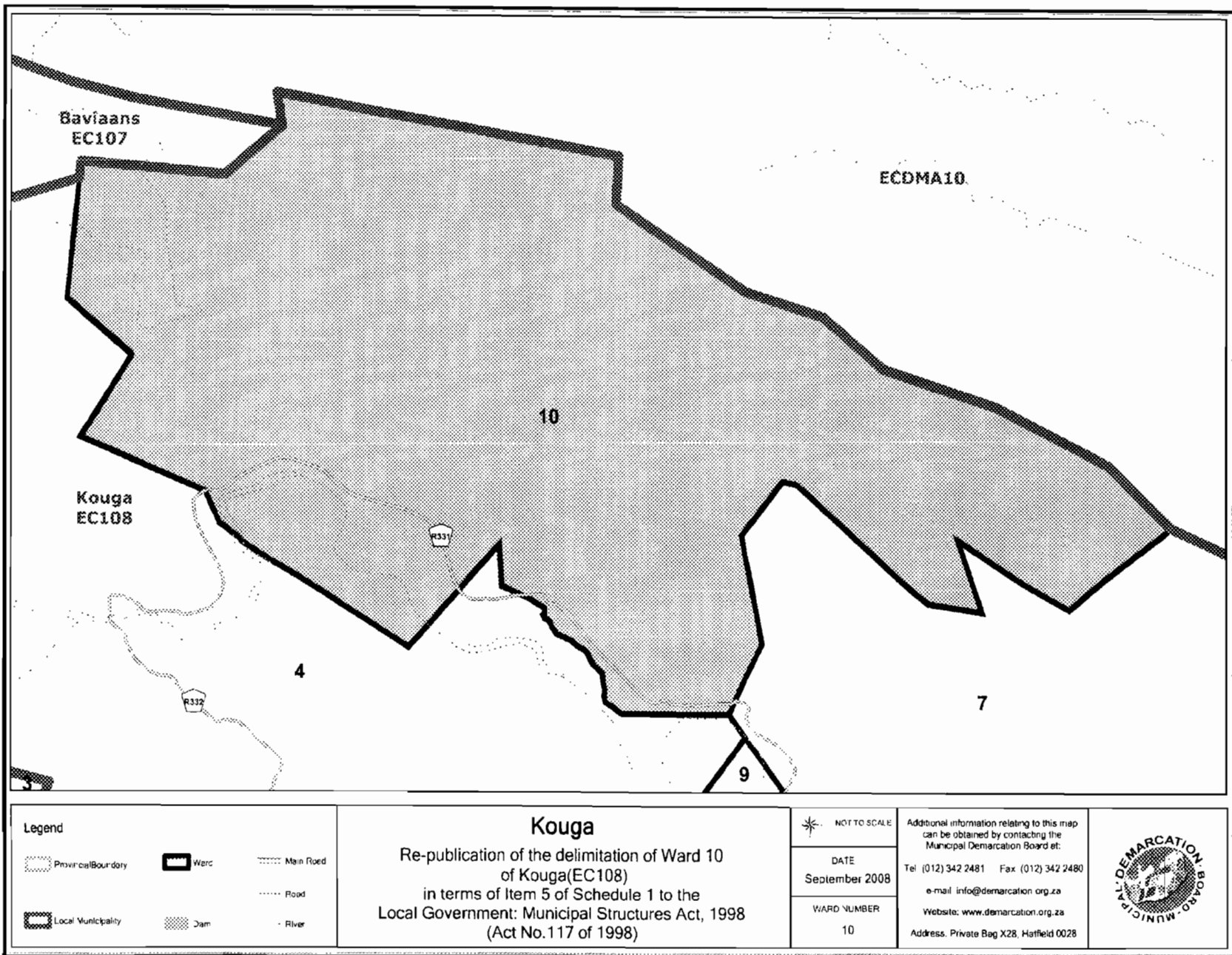
VUYO MLOKOTI
CHAIRPERSON: MUNICIPAL DEMARCATION BOARD

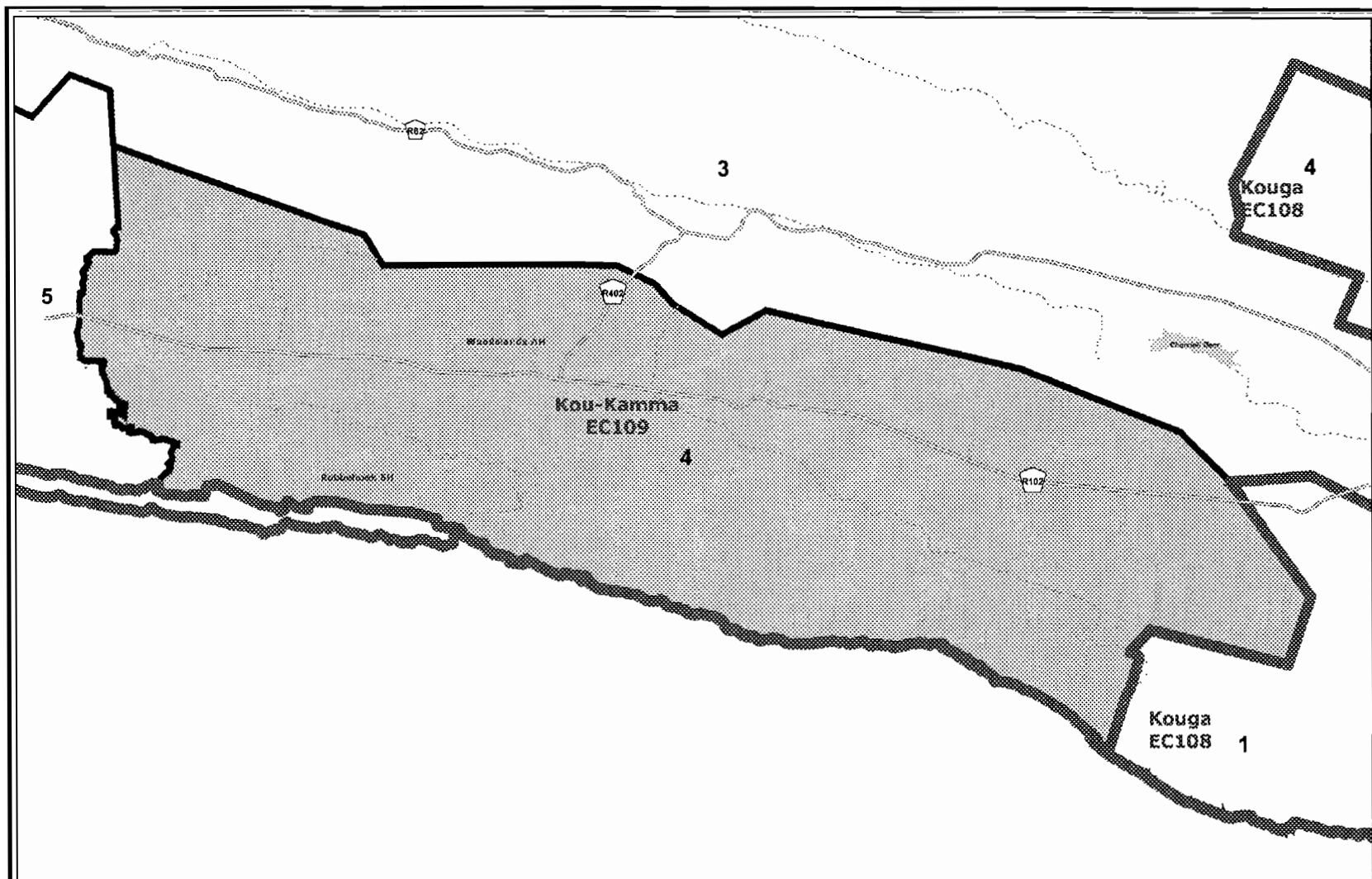
SCHEDULE

Municipal boundaries re-determined					Ward boundaries re-delimited			
DEM No	Name of municipality	Notice No	Provincial Gazette No	Date	Ward No. / Map No.	Notice No	Provincial Gazette No	Date
DEM001	Lukanji (EC134)	334	1654	14 Dec 2006	5	51	1301	28 February 2005
	Nkonkobe (EC127)	334	1654	14 Dec 2006	9,10	260	1417	1 September 2005
DEM138	Nkonkobe (EC127)	334	1654	14 Dec 2006	10	260	1417	1 September 2005
	Lukanji (EC134)	334	1654	14 Dec 2006	1 5	243 51	1410 1301	16 August 2005 28 February 2005
	Amahlati	334	1654	14	4	44	1294	28

	(EC124)			Dec 2006				February 2005
DEM300	Intsika Yethu (EC135)	334	1654	14 Dec 2006	1	52	1302	28 February 2005
	Amahlali (EC124)	334	1654	14 Dec 2006	13	44	1294	28 February 2005
DEM299	Kouga (EC108)	111	1534	18 May 2006	10	39	1289	28 February 2005
DEM334	Kouga (EC108)	334	1654	14 Dec 2006	1	39	1289	28 February 2005
	Kou-Kamma (EC109)	334	1654	14 Dec 2006	4	40	1290	28 February 2005
DEM319	Mnquma (EC122)	334	1654	14 Dec 2006	22	42	1292	28 February 2005
	Mbashe (EC121)	334	1654	14 Dec 2006	3	41	1291	28 February 2005
DEM141	Amahlali (EC124)	177	1729	5 June 2007	20	44	1294	28 February 2005
	Buffalo City (EC125)	177	1729	5 June 2007	42	45	1295	28 February 2005
DEM345	Amahlali (EC124)	483	1821	24 Dec 2007	10,11	44	1294	28 February 2005
	Buffalo City (EC125)	483	1821	24 Dec 2007	35	295	1429	23 September 2005
DEM287	Emalahleni (EC136)	78	1863	2 April 2008	15,16	53	1303	28 February 2005
	Sakhisizwe (EC138)	78	1863	2 April 2008	4,7	55	1305	28 February 2005
DEM380	Blue Crane Route (EC102)	135	1883	24 April 2008	4	35	1285	28 February 2005





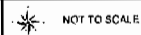


Legend

Provincial Boundary	Ward	Main Road
Local Municipality	Dam	Road
		River

Kou-Kamma

Re-publication of the delimitation of Ward 4
of Kou-Kamma(EC109)
in terms of Item 5 of Schedule 1 to the
Local Government: Municipal Structures Act, 1998
(Act No.117 of 1998)



NOT TO SCALE

DATE
September 2008

WARD NUMBER
4

Additional information relating to this map
can be obtained by contacting the
Municipal Demarcation Board at:

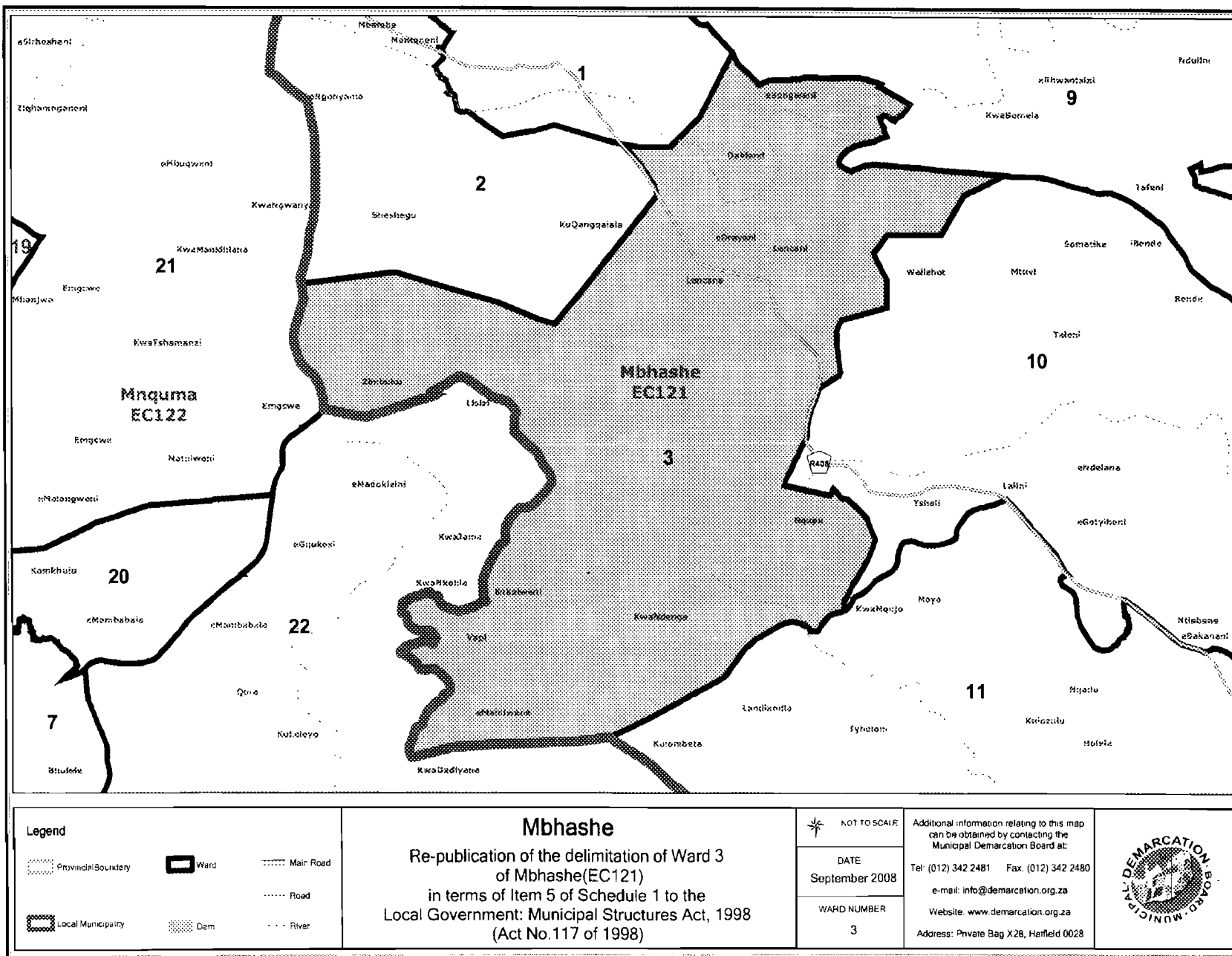
Tel: (012) 342 2481 Fax: (012) 342 2480

e-mail: info@demarcation.org.za

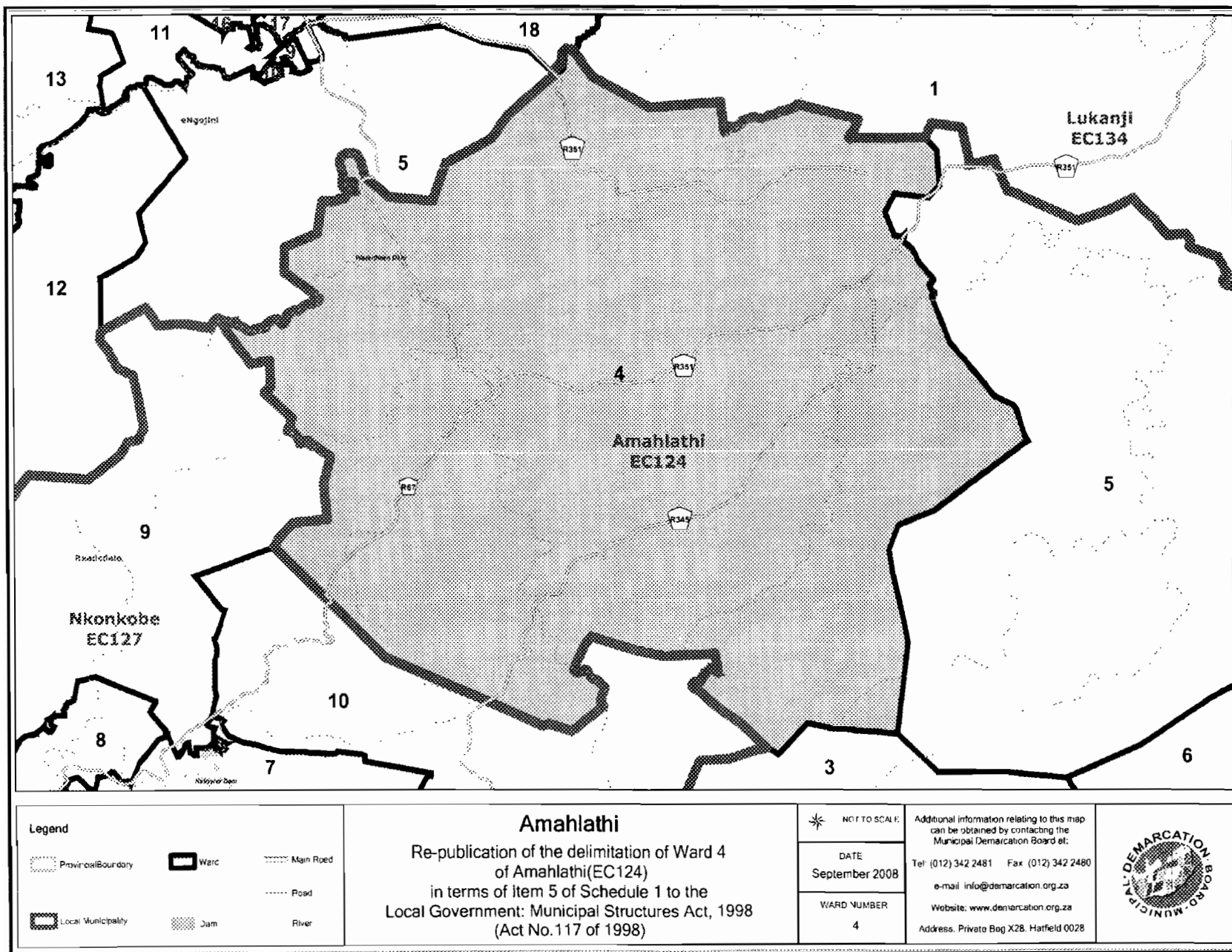
Website: www.demarcation.org.za

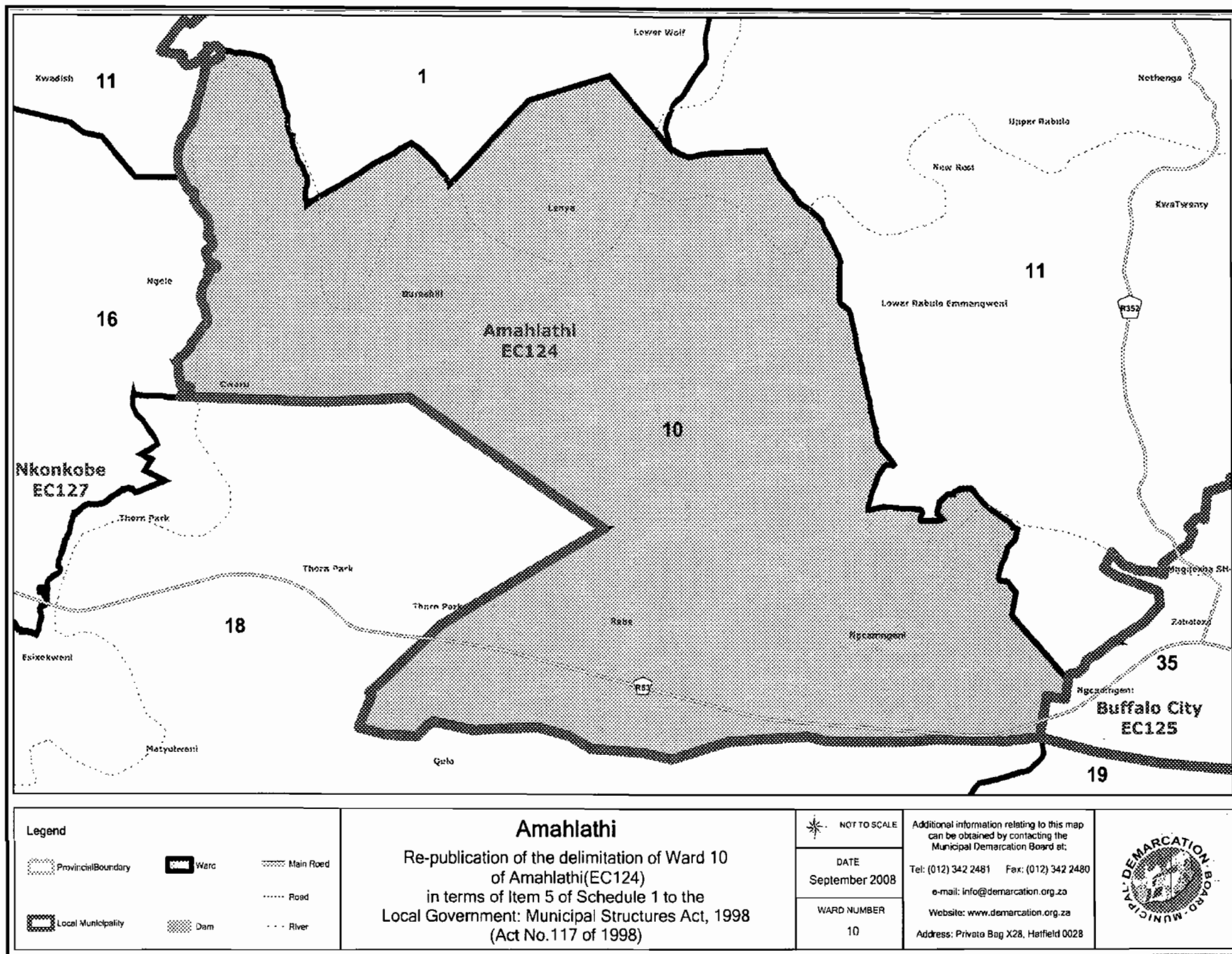
Address: Private Bag X28, Hatfield 0028

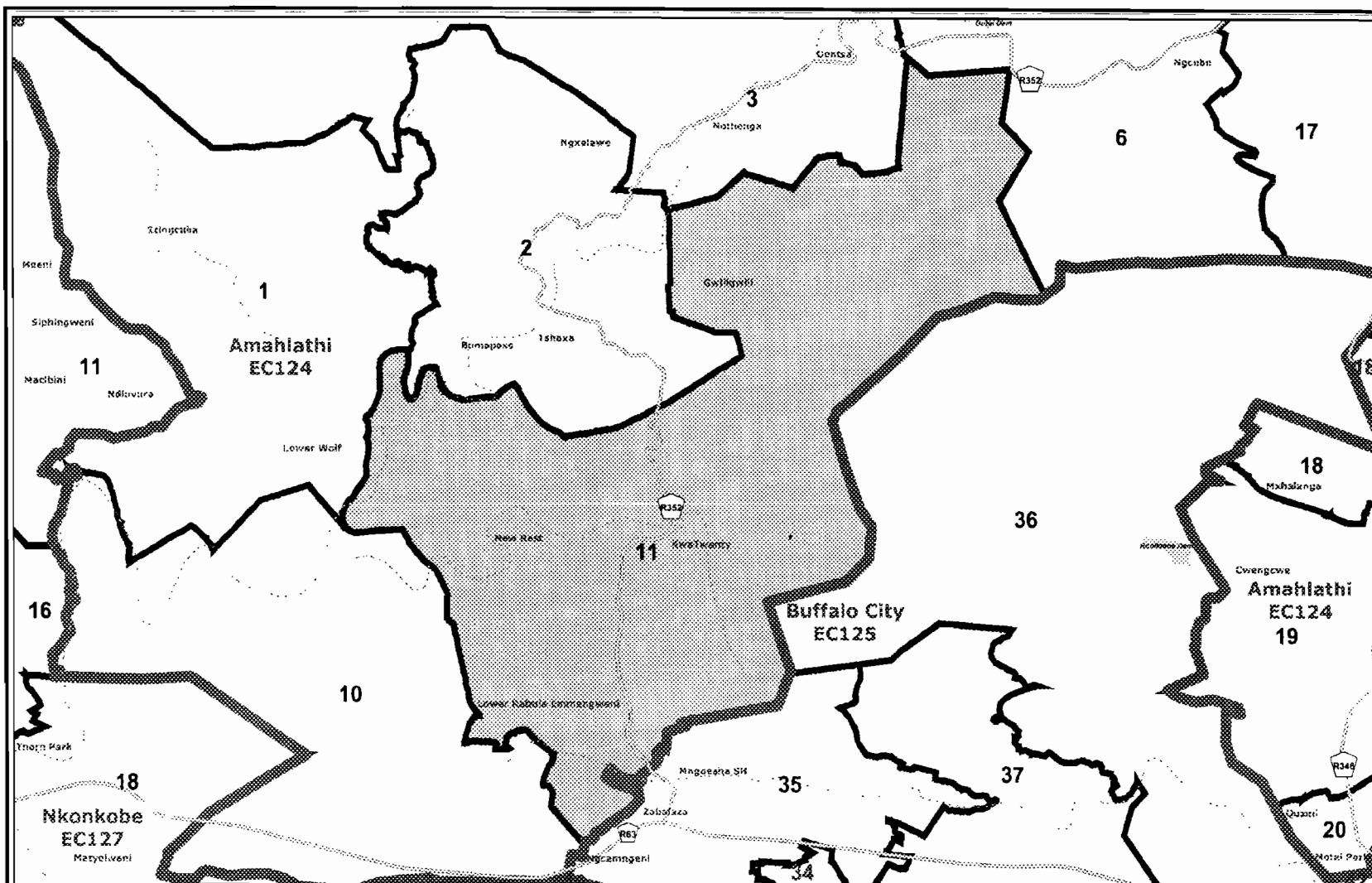












Legend

- | | | |
|---------------------|------|-----------|
| Provincial Boundary | Ward | Main Road |
| Local Municipality | Dam | Road |
| | | River |

Amahlathi

Re-publication of the delimitation of Ward 11
of Amahlathi(EC124)
in terms of Item 5 of Schedule 1 to the
Local Government: Municipal Structures Act, 1998
(Act No.117 of 1998)



NOT TO SCALE

DATE
September 2008

WARD NUMBER
11

Additional information relating to this map
can be obtained by contacting the
Municipal Demarcation Board at:

Tel: (012) 342 2481 Fax: (012) 342 2480

e-mail: info@demarcation.org.za

Website: www.demarcation.org.za

Address: Private Bag X28, Hatfield 0028



