

PROVINCE OF THE EASTERN CAPE
IPHONDO LEMPUMA KOLONI
PROVINSIE OOS-KAAP

**Provincial Gazette
Igazethi Yephondo
Provinsiale Koerant**

Vol. 17

BISHO/
KING WILLIAM'S TOWN, 18 MARCH 2010

No. 2306
(Extraordinary)

IMPORTANT NOTICE

The Government Printing Works will not be held responsible for faxed documents not received due to errors on the fax machine or faxes received which are unclear or incomplete. Please be advised that an "OK" slip, received from a fax machine, will not be accepted as proof that documents were received by the GPW for printing. If documents are faxed to the GPW it will be the sender's responsibility to phone and confirm that the documents were received in good order.

Furthermore the Government Printing Works will also not be held responsible for cancellations and amendments which have not been done on original documents received from clients.

CONTENTS • INHOUD

No.

Page
No. Gazette
No.**GENERAL NOTICE • ALGEMENE KENNISGEWING**

96	Local Government: Municipal Structures Act (117/1998): Municipal Demarcation Board: Delimitation of municipal wards: Intsika Yethu Local Municipality (EC135).....	3	2306
96	Wet op Plaaslike Regering: Munisipale Strukture (117/1998): Munisipale Afbakeningsraad: Afbakening van munisipale wyke: Intsika Yethu Plaaslike Munisipaliteit (EC135)	11	2306

GENERAL NOTICE ALGEMENE KENNISGEWING

NOTICE 96 OF 2010

MUNICIPAL DEMARCATION BOARD DELIMITATION OF MUNICIPAL WARDS IN TERMS OF THE LOCAL GOVERNMENT: MUNICIPAL STRUCTURES ACT, 1998

Municipality : Intsika Yethu Local Municipality (EC135)

In terms of Item 5(1) of Schedule 1 to the Local Government: Municipal Structures Act, 1998 (Act No. 117 of 1998) ("the Act") the Municipal Demarcation Board hereby publishes its delimitation of wards for the above-mentioned municipality. Particulars of the delimitation are listed in the Schedule.

In terms of Item 5(2) of Schedule 1 to the Act, any person aggrieved by a delimitation may, within 14 days of publication of this notice, submit objections in writing to:

The Municipal Demarcation Board
Private Bag X28
Hatfield
0028

Fax: 012-3422480

E-mail: robert@demarcation.org.za

The attached form MDB5 must please be used to object. The form is also available on www.demarcation.org.za

LANDIWE MAHLANGU
CHAIRPERSON: MDB

SCHEDULE

In terms of Section 18(3) of the Local Government: Municipal Structures Act, 1998 (Act 117 of 1998) the MEC responsible for local government has determined that the municipal council consists of 42 councillors.

After having consulted the Independent Electoral Commission, The Municipal Demarcation Board has delimited the municipality into 21 wards in terms of Schedule 1 to the Act.

The number of registered voters in each ward does not vary by more than fifteen percent from the norm. The norm was determined by dividing the total number of voters on the municipal segment of the national common voters roll, namely 69103 voters on 12 February 2009, by the number of wards in the municipality.

An overview map of the boundary of the municipality, with the boundaries of the wards within the municipal boundary, and a map of each ward are attached. In case of a discrepancy between a map and this schedule, the map will prevail.

The ward numbers, the voting districts and voting stations in each ward, and the number of voters are as follows:

WARD 1 comprises of a total of 3637 registered voters

Voting District	Voting Station	Number of Voters
11080864	ZWELIBHANGILE JUNIOR SECONDARY SCHOOL	139
11080707	MTHIMBINI JUNIOR SECONDARY SCHOOL	141
11080493	ZIGUDU MISSION JUNIOR SECONDARY SCHOOL	246
11080482	SENTILE JUNIOR SECONDARY SCHOOL	516
11080448	BANZI TRADITIONAL HALL	660
11080842	GQOBIOZA PRIMARY SCHOOL	361
11080718	GUDWANA JUNIOR SECONDARY SCHOOL	262
11080853	VUKANI PRIMARY SCHOOL	254
11080268	BANGLIZWE JUNIOR SECONDARY SCHOOL	696
11080257	THEMBISILE MARTIN HANI JUNIOR SECONDARY SCHOOL	362

WARD 2 comprises of a total of 3085 registered voters

Voting District	Voting Station	Number of Voters
11080831	MPOMVANA PRIMARY SCHOOL	394
11080662	ANGLICAN CHURCH	590
11080673	MBUDLU JUNIOR SECONDARY SCHOOL	690
11080213	NTSHINGENI JUNIOR SECONDARY SCHOOL	911
11080202	ST MARKS TRADITIONAL HALL	500

WARD 3 comprises of a total of 3169 registered voters

Voting District	Voting Station	Number of Voters
11071055	ST PATRICK/THOBILE DYANTYI	357
11070515	MTHWAKU JUNIOR SECONDARY SCHOOL	405
11071033	NYONGWANE SENIOR PRIMARY SCHOOL	129
11070986	BOLOTWA SENIOR PRIMARY SCHOOL	679
11070975	DLAKAVU JUNIOR SECONDARY SCHOOL	294
11070504	MKONJANA JUNIOR SECONDARY SCHOOL	709
11070492	BILATYE JUNIOR SECONDARY SCHOOL	596

WARD 4 comprises of a total of 3680 registered voters

Voting District	Voting Station	Number of Voters
11070470	MTHYINTYINI JUNIOR SECONDARY SCHOOL	365
11080178	GANDO JUNIOR SECONDARY SCHOOL	757
11080415	ZAMXOLO JUNIOR SECONDARY SCHOOL	791
11071729	MBINZANA JUNIOR SECONDARY SCHOOL	262
11080459	MHLOBO JUNIOR SECONDARY SCHOOL	497
11071044	SENGENI SENIOR PRIMARY SCHOOL	389
11080471	NTLONZE JUNIOR SECONDARY SCHOOL	337
11080729	SHA SHA SENIOR PRIMARY SCHOOL	282

WARD 5 comprises of a total of 3624 registered voters

Voting District	Voting Station	Number of Voters
11080167	DALUBUHLE JUNIOR SECONDARY SCHOOL	655
11080347	DALIWONGA SENIOR SECONDARY SCHOOL	463
11080820	JONGULWANDLE JUNIOR PRIMARY SCHOOL	384
11080189	NQWILISO JUNIOR SECONDARY SCHOOL	648
11080909	UPPER NCUNCUZO JUNIOR SECONDARY SCHOOL	422
11080325	MVUZU JUNIOR SECONDARY SCHOOL	497
11080730	QAMATA GREAT PLACE	160
11080336	SIDUBI POORT	395

WARD 6 comprises of a total of 3515 registered voters

Voting District	Voting Station	Number of Voters
10940857	JONGINTSIZI SENIOR PRIMARY SCHOOL	180
10940475	TOM JUNIOR SECONDARY SCHOOL	227
10940138	INTILINI JUNIOR SECONDARY SCHOOL	435
10940239	ZWELAKHE JUNIOR SECONDARY SCHOOL	345
10940295	MAXHAMA JUNIOR SECONDARY SCHOOL	217
10940082	GCIBALA JUNIOR SECONDARY SCHOOL	226
10940307	MBULU JUNIOR SECONDARY SCHOOL	193
10940374	MBULUKWEZA SENIOR PRIMARY SCHOOL	209
10940655	MPOTULO JUNIOR SECONDARY SCHOOL	223
10940420	MTSHANYANA JUNIOR SECONDARY SCHOOL	503
10940677	LOWER MBULUKWENZA JUNIOR SECONDARY SCHOOL	130
10940688	RHABE CHURCH	55
10940699	LEMTA SENIOR PRIMARY SCHOOL	102
10940352	MGWENYANA COMMUNITY HALL	287
10940363	SIGUBUDWINI JUNIOR SECONDARY SCHOOL	183

WARD 7 comprises of a total of 3509 registered voters

Voting District	Voting Station	Number of Voters
10940453	LOWER QUTSA JUNIOR SECONDARY SCHOOL	362
10940217	KWEBULANA JUNIOR SECONDARY SCHOOL	415
10940183	UPPER QUTSA JUNIOR SECONDARY SCHOOL	566
10940206	BONCOLETHU JUNIOR SECONDARY SCHOOL	349
10940644	KUYASA JUNIOR SECONDARY SCHOOL	194
11080875	NDLANGISA SENIOR SECONDARY SCHOOL	282
11080426	ZWELIBANZI JUNIOR SECONDARY SCHOOL	298
11080246	CHESHIRE HOME	567
11080505	KHANYISA JUNIOR SECONDARY SCHOOL	476

WARD 8 comprises of a total of 3620 registered voters

Voting District	Voting Station	Number of Voters
10910214	EZOLO SCHOOL	292
10940093	TSOMO HIGH SCHOOL	402
10910843	DAZA JUNIOR SECONDARY SCHOOL	321
10910405	NONKQUBELA JUNIOR SECONDARY SCHOOL	276
10910179	MADUMA JUNIOR SECONDARY SCHOOL	354
10940464	TSUME JUNIOR SECONDARY SCHOOL	373
10940116	WILSON MAYEKISO SENIOR PRIMARY SCHOOL	358
10740013	EAST BANK JUNIOR SECONDARY SCHOOL	309
10940521	TSOMO TOWN HALL	935

WARD 9 comprises of a total of 2917 registered voters

Voting District	Voting Station	Number of Voters
10940554	UPPER GQOGQORHA J.S.S	445
10940633	UPPER XUME SECONDARY SCHOOL	577
10740024	GOBINAMBA SENIOR SECONDARY SCHOOL	309
10910696	MABHENTSENI JUNIOR SECONDARY SCHOOL	566
10940071	MIDDLE GQOGQORA JUNIOR SECONDARY SCHOOL	301
10940756	LUFUKUFUKU JUNIOR SECONDARY SCHOOL	319
10940026 (Portion)	GAQELO SENIOR PRIMARY SCHOOL	400

WARD 10 comprises of a total of 3136 registered voters

Voting District	Voting Station	Number of Voters
10940846	LOWER TSOJANA JUNIOR SECONDARY SCHOOL	207
10940510	BONASE JUNIOR SECONDARY SCHOOL	509
10940037	MANGUBOMVU JUNIOR SECONDARY SCHOOL	268
10940059	MANGELENGELE JUNIOR SECONDARY SCHOOL	197
10940767	GQOGQORA JUNIOR SECONDARY SCHOOL	217
10940060	MVHLASE JUNIOR SECONDARY SCHOOL	463
10940734	LOWER GQOGQORA JUNIOR SECONDARY SCHOOL	145
10940341	GCINGCA JUNIOR SECONDARY SCHOOL	400
10940149	NCWANA JUNIOR SECONDARY SCHOOL	234
10940150	MTSHABE JUNIOR SECONDARY SCHOOL	496

WARD 11 comprises of a total of 2866 registered voters

Voting District	Voting Station	Number of Voters
11080404	NDLUNKULU JUNIOR SECONDARY SCHOOL	602
10940778	PHILMON JUNIOR SECONDARY SCHOOL	301
11080369	MDIBANISO JUNIOR SECONDARY SCHOOL	361
10940543	NGUBEZULU JUNIOR SECONDARY SCHOOL	319
11080011	DALISIZWE JUNIOR SECONDARY SCHOOL	417
11080022	JONGINAMBA JUNIOR SECONDARY SCHOOL	318
11080381	HLATIKHULU JUNIOR SECONDARY SCHOOL	448
10940026 (Portion)	GAQELO SENIOR PRIMARY SCHOOL	100

WARD 12 comprises of a total of 3278 registered voters

Voting District	Voting Station	Number of Voters
11080370	KWABABA JUNIOR SECONDARY SCHOOL	452
11080628	NGOJINI JUNIOR SECONDARY SCHOOL	189
11080055	GXOJENI/KAWVLELE JUNIOR SECONDARY SCHOOL	599
11080044	ZWELIXOLILE JUNIOR SECONDARY SCHOOL	417
11080033	SABATA SENIOR SECONDARY SCHOOL	949
11080392	MAIN JUNIOR SECONDARY SCHOOL	672

WARD 13 comprises of a total of 3466 registered voters

Voting District	Voting Station	Number of Voters
10940228	PHAPHAMA JUNIOR SECONDARY SCHOOL	262
10940194	MAWUSHENI JUNIOR SECONDARY SCHOOL	432
10940105	MKWINTI JUNIOR SECONDARY SCHOOL	418
10940723	PHUMLA JUNIOR SECONDARY SCHOOL	259
10940329	SINETIEMBA COMMUNITY HALL	579
10940330	GXWALUBONMVU JUNIOR SECONDARY SCHOOL	302
10940127	NGUDLE JUNIOR SECONDARY SCHOOL	510
10940701	LUMANI JUNIOR SECONDARY SCHOOL	229
10940712	HANGE JUNIOR SECONDARY SCHOOL	299
10940802	JONGI MISSION	176

WARD 14 comprises of a total of 3351 registered voters

Voting District	Voting Station	Number of Voters
10970029	COFIMVABA TOWN HALL	2229
10970018	GOOD HOPE COMMUNITY SCHOOL	1122

WARD 15 comprises of a total of 3676 registered voters

Voting District	Voting Station	Number of Voters
11080224	MCUMGCO JUNIOR SECONDARY SCHOOL	577
11080741	GILINKUMBI	135
11080516	MATSIIONA JUNIOR SECONDARY SCHOOL	228
11080358	ISIKHOBABA JUNIOR SECONDARY SCHOOL	834
11080897	DULI JUNIOR SECONDARY SCHOOL	548
11080190	LUNGILE JUNIOR SECONDARY SCHOOL	600
11080235	MAHLUBINI JUNIOR SECONDARY SCHOOL	607
11080886	MAGWALA STADIUM	147

WARD 16 comprises of a total of 3623 registered voters

Voting District	Voting Station	Number of Voters
11080145	LOWER NCUNCUZO SCHOOL	822
10940442	BOLANA JUNIOR SECONDARY SCHOOL	356
11080314	NGCALA JUNIOR SECONDARY SCHOOL	410
10940161	NGONYAMA SECONDARY SCHOOL	422
11080932	KHULILE JUNIOR SECONDARY SCHOOL	245
10940431	QWILI JUNIOR SECONDARY SCHOOL	354
10940172	TSOJANA JUNIOR SECONDARY SCHOOL	413
10940745	MHLATINI JUNIOR SECONDARY SCHOOL	268
10940666	MTYAMNDE JUNIOR SECONDARY SCHOOL	333

WARD 17 comprises of a total of 3207 registered voters

Voting District	Voting Station	Number of Voters
11080954	NGQWARHU JUNIOR SECONDARY SCHOOL	307
11080606	MATAFENI JUNIOR SECONDARY SCHOOL	421
11080651	QUMANCO JUNIOR SECONDARY SCHOOL	404
11080066	NCORA FLATS JUNIOR SECONDARY SCHOOL	1260
11080303	SIGANGENI JUNIOR SECONDARY SCHOOL	530
11080617	NGQWASHU JUNIOR SECONDARY SCHOOL	285

WARD 18 comprises of a total of 3043 registered voters

Voting District	Voting Station	Number of Voters
11080572	TALENI JUNIOR SECONDARY SCHOOL	167
11080291	LOWER NCORA JUNIOR SECONDARY SCHOOL	712
11080077	MBAXA JUNIOR SECONDARY SCHOOL	738
11080088	NOMADAMBA JUNIOR SECONDARY SCHOOL	1039
11080594	KULONGQAYI JUNIOR SECONDARY SCHOOL	387

WARD 19 comprises of a total of 2924 registered voters

Voting District	Voting Station	Number of Voters
11080583	MAILUNGULU JUNIOR SECONDARY SCHOOL	131
11080561	MPUNGA JUNIOR SECONDARY SCHOOL	173
11460080	ZINGQUTU JUNIOR SECONDARY SCHOOL	341
11080549	NQUQU JUNIOR SECONDARY SCHOOL	573
11080796	MTINGWEVU JUNIOR SECONDARY SCHOOL	131
11080437	NCOKAZI'S SHOP	397
11080099	MTINGWEVU CLINIC	452
11080112	MNQANQENI JUNIOR SECONDARY SCHOOL	726

WARD 20 comprises of a total of 2929 registered voters

Voting District	Voting Station	Number of Voters
11460541	LUZUKO JUNIOR SECONDARY SCHOOL	243
11460013	LOWER SEPLAN JUNIOR SECONDARY SCHOOL	425
11080808	GUSI JUNIOR SECONDARY SCHOOL	298
11080819	KWA GCINA SENIOR PRIMARY SCHOOL	169
11080460	RWANTSANA JUNIOR SECONDARY SCHOOL	396
11080156	TSAKANA JUNIOR SECONDARY SCHOOL	266
11080134	BANZINDLOVU JUNIOR SECONDARY SCHOOL	680
11080123	SOUTHEYVILLE JUNIOR SECONDARY SCHOOL	452

WARD 21 comprises of a total of 2848 registered voters

Voting District	Voting Station	Number of Voters
11080280	MZIMVUBU JUNIOR SECONDARY SCHOOL	325
11080279	NGXWABANGU JUNIOR SECONDARY SCHOOL	646
11080550	NOWETIU JUNIOR SECONDARY SCHOOL	454
11080538	MKULULI JUNIOR SECONDARY SCHOOL	407
11080101	NXELESA COMMUNITY HALL	431
11080943	NQUQU JUNIOR SECONDARY SCHOOL	217
11080527	HOYANA JUNIOR SECONDARY SCHOOL	368

Important: This Schedule contains the total number of registered voters on the municipality's segment of the national common voters' roll on 12 February 2009 as provided for in Government Notice No. 750 published in Government Gazette No. 32407 of 15 July 2009. The voting district numbers, the voting district boundaries, voting stations, and the number of voters may change after the registration of voters for the 2011 local elections.

FORM MDB5

WARD DELIMITATION

OBJECTION IN TERMS OF ITEM 5(2) OF SCHEDULE 1 TO THE
LOCAL GOVERNMENT: MUNICIPAL STRUCTURES ACT, 1998

Name of municipality:.....Code:.....

Name of aggrieved person/institution:.....

Contact person in case of an institution:.....

Address:.....

Tel. number:.....Cell number:.....

Email address:.....

I hereby object to the delimitation of the boundaries of the following wards:

WARD NUMBER	REASON/MOTIVATION

I request the Municipal Demarcation Board to consider the following alternative proposals:

Ward number	The ward should comprise of the following voting districts (Provide voting district number and the number of voters in brackets e.g. VD1123456(1500)+VD345678(2500)=4000)	Motivation

I confirm that:

- each cluster of voting districts form a contiguous ward;
- the number of voters in each ward fall within the minimum and maximum of voters allowed per ward;
- the proposed ward boundaries comply, in general, with the criteria.

SIGNATURE _____

NAME AND SURNAME _____

DATE _____

KENNISGEWING 96 VAN 2010**MUNISIPALE AFBAKENINGSRAAD
AFBAKENING VAN MUNISIPALE WYKE INGEVOLGE DIE WET OP
PLAASLIKE REGERING: MUNISIPALE STRUKTURE, 1998****Munisipaliteit : Intsika Yethu Plaaslike Munisipaliteit (EC135)**

Ingevolge Item 5(1) van Bylae 1 van die Wet op Plaaslike Regering: Munisipale Strukture, 1998 (Wet No. 117 van 1998) ("die Wet") publiseer die Munisipale Afbakeningsraad hiermee sy afbakening van wyke vir die bogenaaamde munisipaliteit. Besonderhede van die afbakening is vervat in die Bylae.

Ingevolge Item 5(2) van Bylae 1 van die Wet, kan enige persoon wat gegrief is deur 'n afbakening binne 14 dae na publikasie van hierdie kennisgewing skriftelike besware voorlê aan:

Die Munisipale Afbakeningsraad
Privaatsak X28

Hatfield

0028

Faks: 012-3422480

E-pos: robert@demarcation.org.za

Die aangehegte vorm MDB5 moet asseblief gebruik word om beswaar aan te teken. Die vorm is ook beskikbaar op www.demarcation.org.za

LANDIWE MAHLANGU

VOORSITTER: MUNISIPALE AFBAKENINGSRAAD

BYLAE

Ingevolge Artikel 18(3) van die Wet op Plaaslike Regering: Munisipale Strukture, 1998 (Wet 117 van 1998) het die LUR vir plaaslike regering bepaal dat die munisipale raad bestaan uit 42 raadslede.

Na oorlegpleging met die Onafhanklike Verkiesingskommissie het die Munisipale Afbakeningsraad die munisipaliteit in 21 wyke afgebaken ingevolge Bylae 1 van die Wet.

Die getal geregistreerde kiesers in elke wyk, wyk nie meer as vyftien persent van die norm af nie. Die norm is bepaal deur die getal geregistreerde kiesers op die munisipale segment van die nasionale gemeenskaplike kieserslys, naamlik 69103 kiesers op 12 Februarie 2009, deur die getal wyke in die munisipaliteit te deel.

'n Oorsigkaart van die munisipale grens met die grense van die wyke binne die munisipale grens, en 'n kaart van elke wyk, is aangeheg. Ingeval van 'n verskil tussen 'n kaart en hierdie bylae, sal die kaart geld.

Die wyknommers, die stemdistrikte en stemlokale in elke wyk, en die getal kiesers is as volg:

WYK 1 het 3637 kiesers

Stemdistrik	Stemlokaal	Getal kiesers
11080268	BANGILIZWE JUNIOR SECONDARY SCHOOL	696
11080864	ZWELIBHANGILE JUNIOR SECONDARY SCHOOL	139
11080718	GUDWANA JUNIOR SECONDARY SCHOOL	262
11080842	GQOBHOZA PRIMARY SCHOOL	361
11080707	MTHIMBINI JUNIOR SECONDARY SCHOOL	141
11080493	ZIGUDU MISSION JUNIOR SECONDARY SCHOOL	246
11080482	SENTILE JUNIOR SECONDARY SCHOOL	516
11080853	VUKANI PRIMARY SCHOOL	254
11080448	BANZI TRADITIONAL HALL	660
11080257	THEMBISILE MARTIN HANI JUNIOR SECONDARY SCHOOL	362

WYK 2 het 3085 kiesers

Stemdistrik	Stemlokaal	Getal kiesers
11080831	MPOMVANA PRIMARY SCHOOL	394
11080673	MBUDLU JUNIOR SECONDARY SCHOOL	690
11080662	ANGLICAN CHURCH	590
11080202	ST MARKS TRADITIONAL HALL	500
11080213	NTSHINGENI JUNIOR SECONDARY SCHOOL	911

WYK 3 het 3169 kiesers

Stemdistrik	Stemlokaal	Getal kiesers
11070975	DLAKAVU JUNIOR SECONDARY SCHOOL	294
11070515	MTHWAKU JUNIOR SECONDARY SCHOOL	405
11070504	MKONJANA JUNIOR SECONDARY SCHOOL	709
11070492	BILATYE JUNIOR SECONDARY SCHOOL	596
11070986	BOLOTWA SENIOR PRIMARY SCHOOL	679
11071055	ST PATRICK/THOBILE DYANTYI	357
11071033	NYONGWANE SENIOR PRIMARY SCHOOL	129

WYK 4 het 3680 kiesers

Stemdistrik	Stemlokaal	Getal kiesers
11080178	GANDO JUNIOR SECONDARY SCHOOL	757
11070470	MTHYINTYINI JUNIOR SECONDARY SCHOOL	365
11071729	MBINZANA JUNIOR SECONDARY SCHOOL	262
11080415	ZAMXOLO JUNIOR SECONDARY SCHOOL	791
11080459	MHLORO JUNIOR SECONDARY SCHOOL	497
11080729	SHA SHA SENIOR PRIMARY SCHOOL	282
11080471	NTLONZE JUNIOR SECONDARY SCHOOL	337
11071044	SENGENI SENIOR PRIMARY SCHOOL	389

WYK 5 het 3624 kiesers

Stemdistrik	Stemlokaal	Getal kiesers
11080909	UPPER NCUNCUZO JUNIOR SECONDARY SCHOOL	422
11080820	JONGULWANDLE JUNIOR PRIMARY SCHOOL	384
11080730	QAMATA GREAT PLACE	160
11080347	DALIWONGA SENIOR SECONDARY SCHOOL	463
11080336	SIDUBI POORT	395
11080325	MVUZO JUNIOR SECONDARY SCHOOL	497
11080189	NQWILISO JUNIOR SECONDARY SCHOOL	648
11080167	DALUBUHLE JUNIOR SECONDARY SCHOOL	655

WYK 6 het 3515 kiesers

Stemdistrik	Stemlokaal	Getal kiesers
10940677	LOWER MBULUKWENZA JUNIOR SECONDARY SCHOOL	130
10940475	TOM JUNIOR SECONDARY SCHOOL	227
10940363	SIGUBUDWINI JUNIOR SECONDARY SCHOOL	183
10940082	GCIBALA JUNIOR SECONDARY SCHOOL	226
10940239	ZWELAKHE JUNIOR SECONDARY SCHOOL	345
10940307	MBULU JUNIOR SECONDARY SCHOOL	193
10940295	MAXHAMA JUNIOR SECONDARY SCHOOL	217
10940374	MBULUKWEZA SENIOR PRIMARY SCHOOL	209
10940352	MGWENYANA COMMUNITY HALL	287
10940655	MPOTULO JUNIOR SECONDARY SCHOOL	223
10940699	LEMTA SENIOR PRIMARY SCHOOL	102
10940138	INTILINI JUNIOR SECONDARY SCHOOL	435
10940688	RHABE CHURCH	55
10940857	JONGINTSIZI SENIOR PRIMARY SCHOOL	180
10940420	MTSHANYANA JUNIOR SECONDARY SCHOOL	503

WYK 7 het 3509 kiesers

Stemdistrik	Stemlokaal	Getal kiesers
10940183	UPPER QUTSA JUNIOR SECONDARY SCHOOL	566
10940644	KUYASA JUNIOR SECONDARY SCHOOL	194
10940217	KWEBULANA JUNIOR SECONDARY SCHOOL	415
10940206	BONCOLETHU JUNIOR SECONDARY SCHOOL	349
11080505	KHANYISA JUNIOR SECONDARY SCHOOL	476
10940453	LOWER QUTSA JUNIOR SECONDARY SCHOOL	362
11080246	CHEESHIRE HOME	567
11080426	ZWELIBANZI JUNIOR SECONDARY SCHOOL	298
11080875	NDLANGISA SENIOR SECONDARY SCHOOL	282

WYK 8 het 3620 kiesers

Stemdistrik	Stemlokaal	Getal kiesers
10940093	TSOMO HIGH SCHOOL	402
10910214	EZOLO SCHOOL	292
10740013	EAST BANK JUNIOR SECONDARY SCHOOL	309
10910843	DAZA JUNIOR SECONDARY SCHOOL	321
10910179	MADUMA JUNIOR SECONDARY SCHOOL	354
10940116	WILSON MAYEKISO SENIOR PRIMARY SCHOOL	358
10940464	TSUME JUNIOR SECONDARY SCHOOL	373
10940521	TSOMO TOWN HALL	935
10910405	NONKQUBELA JUNIOR SECONDARY SCHOOL	276

WYK 9 het 2917 kiesers

Stemdistrik	Stemlokaal	Getal kiesers
10940554	UPPER GQOGQORHA J.S.S	445
10940071	MIDDLE GQOGQORA JUNIOR SECONDARY SCHOOL	301
10910696	MABHENTSENI JUNIOR SECONDARY SCHOOL	566
10940756	LUFUKUFUKU JUNIOR SECONDARY SCHOOL	319
10940633	UPPER XUME SECONDARY SCHOOL	577
10740024	GOBINAMBA SENIOR SECONDARY SCHOOL	309
10940026 (Gedeelte)	GAQELO SENIOR PRIMARY SCHOOL	400

WYK 10 het 3136 kiesers

Stemdistrik	Stemlokaal	Getal kiesers
10940767	GQOGQORA JUNIOR SECONDARY SCHOOL	217
10940341	GCINGCA JUNIOR SECONDARY SCHOOL	400
10940734	LOWER GQOGQORA JUNIOR SECONDARY SCHOOL	145
10940150	MTSHABE JUNIOR SECONDARY SCHOOL	496
10940510	BONASE JUNIOR SECONDARY SCHOOL	509
10940846	LOWER TSOJANA JUNIOR SECONDARY SCHOOL	207
10940037	MANGUBOMVU JUNIOR SECONDARY SCHOOL	268
10940149	NCWANA JUNIOR SECONDARY SCHOOL	234
10940059	MANGELENGELE JUNIOR SECONDARY SCHOOL	197
10940060	MVELASE JUNIOR SECONDARY SCHOOL	463

WYK 11 het 2866 kiesers

Stemdistrik	Stemlokaal	Getal kiesers
10940543	NGUBEZULU JUNIOR SECONDARY SCHOOL	319
10940778	PHILMON JUNIOR SECONDARY SCHOOL	301
11080022	JONGINAMIBA JUNIOR SECONDARY SCHOOL	318
10940026 (Gedeelte)	GAQELO SENIOR PRIMARY SCHOOL	100
11080381	HLATIKHULU JUNIOR SECONDARY SCHOOL	448
11080404	NDLUNKULU JUNIOR SECONDARY SCHOOL	602
11080369	MDIBANISO JUNIOR SECONDARY SCHOOL	361
11080011	DALISIZWE JUNIOR SECONDARY SCHOOL	417

WYK 12 het 3278 kiesers

Stemdistrik	Stemlokaal	Getal kiesers
11080033	SABATA SENIOR SECONDARY SCHOOL	949
11080044	ZWELIXOLILE JUNIOR SECONDARY SCHOOL	417
11080055	GXOJENI/KAWVLELE JUNIOR SECONDARY SCHOOL	599
11080392	MAIN JUNIOR SECONDARY SCHOOL	672
11080628	NGOJINI JUNIOR SECONDARY SCHOOL	189
11080370	KWABABA JUNIOR SECONDARY SCHOOL	452

WYK 13 het 3466 kiesers

Stemdistrik	Stemlokaal	Getal kiesers
10940105	MKWINTI JUNIOR SECONDARY SCHOOL	418
10940802	JONGI MISSION	176
10940329	SINETHEMBA COMMUNITY HALL	579
10940228	PHAPHAMA JUNIOR SECONDARY SCHOOL	262
10940330	GXWALUBONMVU JUNIOR SECONDARY SCHOOL	302
10940701	LUMANI JUNIOR SECONDARY SCHOOL	229
10940712	HANGE JUNIOR SECONDARY SCHOOL	299
10940723	PHUMLA JUNIOR SECONDARY SCHOOL	259
10940127	NGUDLE JUNIOR SECONDARY SCHOOL	510
10940194	MAWUSHENI JUNIOR SECONDARY SCHOOL	432

WYK 14 het 3351 kiesers

Stemdistrik	Stemlokaal	Getal kiesers
10970029	COFIMVABA TOWN HALL	2229
10970018	GOOD HOPE COMMUNITY SCHOOL	1122

WYK 15 het 3676 kiesers

Stemdistrik	Stemlokaal	Getal kiesers
11080358	ISIKHOBIA JUNIOR SECONDARY SCHOOL	834
11080224	MCUMGCO JUNIOR SECONDARY SCHOOL	577
11080190	LUNGILE JUNIOR SECONDARY SCHOOL	600
11080235	MAHLUBINI JUNIOR SECONDARY SCHOOL	607
11080741	GILINKUMBI	135
11080886	MAGWALA STADIUM	147
11080897	DULI JUNIOR SECONDARY SCHOOL	548
11080516	MATSHONA JUNIOR SECONDARY SCHOOL	228

WYK 16 het 3623 kiesers

Stemdistrik	Stemlokaal	Getal kiesers
10940161	NGONYAMA SECONDARY SCHOOL	422
10940666	MTYAMNDE JUNIOR SECONDARY SCHOOL	333
11080932	KHULILE JUNIOR SECONDARY SCHOOL	245
10940172	TSOJANA JUNIOR SECONDARY SCHOOL	413
10940431	QWILI JUNIOR SECONDARY SCHOOL	354
10940442	BOJANA JUNIOR SECONDARY SCHOOL	356
10940745	MHLATINI JUNIOR SECONDARY SCHOOL	268
11080145	LOWER NCUNCUZO SCHOOL	822
11080314	NGCALA JUNIOR SECONDARY SCHOOL	410

WYK 17 het 3207 kiesers

Stemdistrik	Stemlokaal	Getal kiesers
11080303	SIGANGENI JUNIOR SECONDARY SCHOOL	530
11080606	MATAFENI JUNIOR SECONDARY SCHOOL	421
11080617	NGQWASHU JUNIOR SECONDARY SCHOOL	285
11080651	QUMANCO JUNIOR SECONDARY SCHOOL	404
11080954	NGQWARHU JUNIOR SECONDARY SCHOOL	307
11080066	NCORA FLATS JUNIOR SECONDARY SCHOOL	1260

WYK 18 het 3043 kiesers

Stemdistrik	Stemlokaal	Getal kiesers
11080594	KULONGQAYI JUNIOR SECONDARY SCHOOL	387
11080077	MBAXA JUNIOR SECONDARY SCHOOL	738
11080088	NOMADAMBA JUNIOR SECONDARY SCHOOL	1039
11080572	TALENI JUNIOR SECONDARY SCHOOL	167
11080291	LOWER NCORA JUNIOR SECONDARY SCHOOL	712

WYK 19 het 2924 kiesers

Stemdistrik	Stemlokaal	Getal kiesers
11080583	MAHLUNGULU JUNIOR SECONDARY SCHOOL	131
11080561	MPUNGA JUNIOR SECONDARY SCHOOL	173
11080549	NQUQU JUNIOR SECONDARY SCHOOL	573
11080796	MTINGWEVU JUNIOR SECONDARY SCHOOL	131
11460080	ZINGQUTU JUNIOR SECONDARY SCHOOL	341
11080112	MNQANQENI JUNIOR SECONDARY SCHOOL	726
11080437	NCOKAZI'S SHOP	397
11080099	MTINGWEVU CLINIC	452

WYK 20 het 2929 kiesers

Stemdistrik	Stemlokaal	Getal kiesers
11460541	LUZUKO JUNIOR SECONDARY SCHOOL	243
11080819	KWA GCINA SENIOR PRIMARY SCHOOL	169
11080808	GUSI JUNIOR SECONDARY SCHOOL	298
11080156	TSAKANA JUNIOR SECONDARY SCHOOL	266
11080134	BANZINDLOVU JUNIOR SECONDARY SCHOOL	680
11080123	SOUTHEYVILLE JUNIOR SECONDARY SCHOOL	452
11460013	LOWER SEPLAN JUNIOR SECONDARY SCHOOL	425
11080460	RWANTSANA JUNIOR SECONDARY SCHOOL	396

WYK 21 het 2848 kiesers

Stemdistrik	Stemlokaal	Getal kiesers
11080550	NOWETHU JUNIOR SECONDARY SCHOOL	454
11080101	NXELESA COMMUNITY HALL	431
11080279	NGXWABANGU JUNIOR SECONDARY SCHOOL	646
11080280	MZIMVUBU JUNIOR SECONDARY SCHOOL	325
11080527	HOYANA JUNIOR SECONDARY SCHOOL	368
11080538	MKULULI JUNIOR SECONDARY SCHOOL	407
11080943	NQUQU JUNIOR SECONDARY SCHOOL	217

Belangrik: Hierdie Bylae bevat die totale getal geregistreeerde kiesers op die munisipaliteit se segment van die nasionale gemeenskaplike kieserslys op 12 Februarie 2009, waarvoor voorsiening gemaak is in Goewermentskennisgewing No. 750 gepubliseer in Staatskoerant No. 32407 van 15 Julie 2009. Die stemdistriknommers, die grense van die stemdistrikte, die stemlokale, en die getal kiesers mag verander na die registrasie van kiesers vir die 2011 plaaslike verkiesings.

VORM MDB5

WYKSAFBAKENING

**BESWAAR INGEVOLGE ITEM 5(2) VAN BYLAE 1
VAN DIE WET OP PLAASLIKE REGERING: MUNISIPALE STRUKTURE, 1998**

Naam van Munisipaliteit:.....Code:.....

Naam van beswaarde persoon/instelling:.....

Kontak persoon in geval van 'n instelling:.....

Adres:.....

Tel. nommer:..... Selfoonnommer:.....

E-pos adres:.....

Hiermee teken ek beswaar aan teen die afbakening van die grense van die volgende wyke

WYK NOMMER	REDE/MOTIVERING

Ek versoek die Munisipale Afbakeningsraad om die volgende alternatiewe voorstelle te oorweeg:

Wyk nommer	Die wyk moet bestaan uit die volgende stembedistrikte: (Voorsien die stembedistriktnommer en die getal geregistreerde kiesers as volg $VD1123456(1500)+VD345678(2500)=4000$)	Motivering

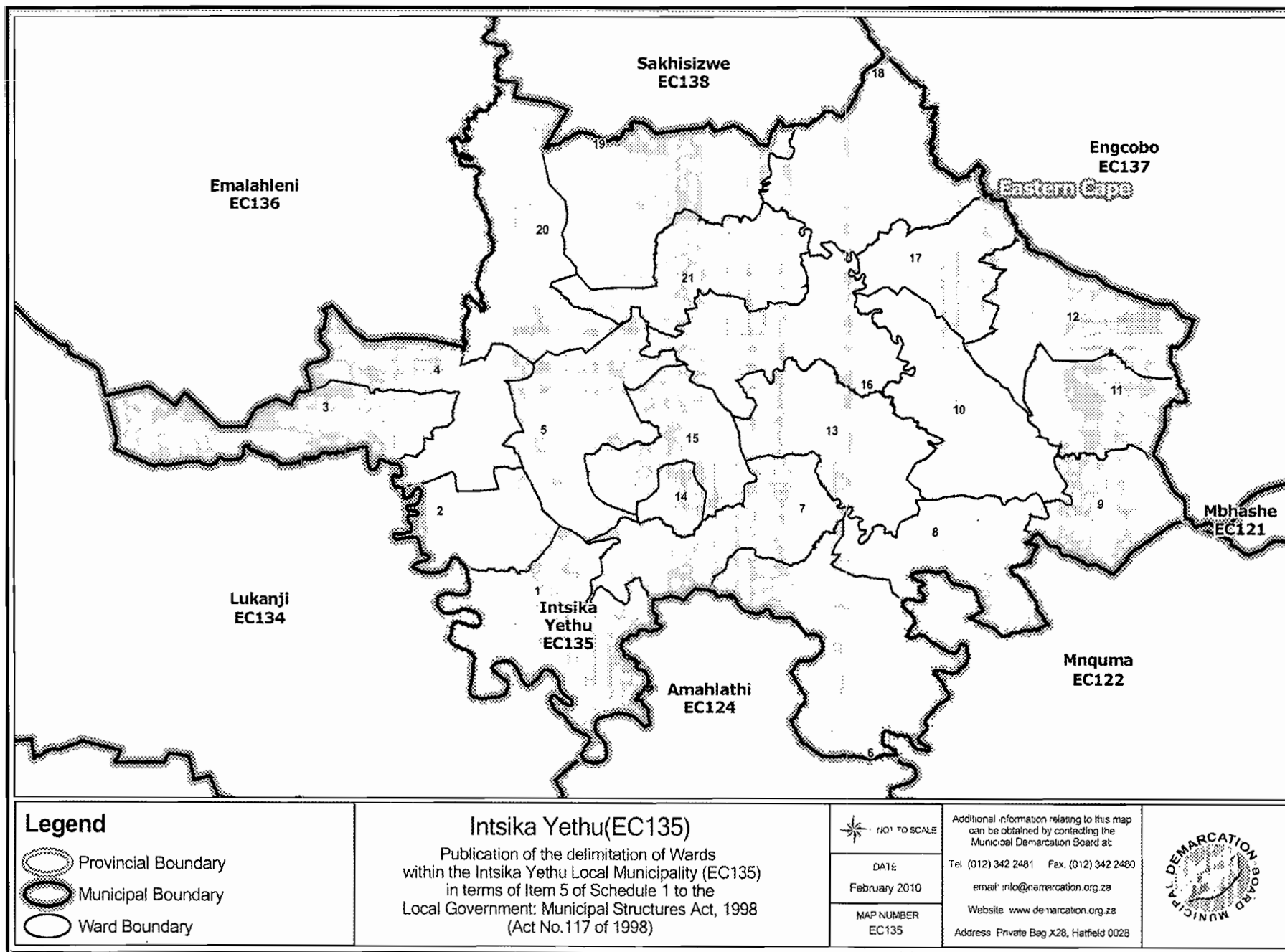
Ek bevestig dat:

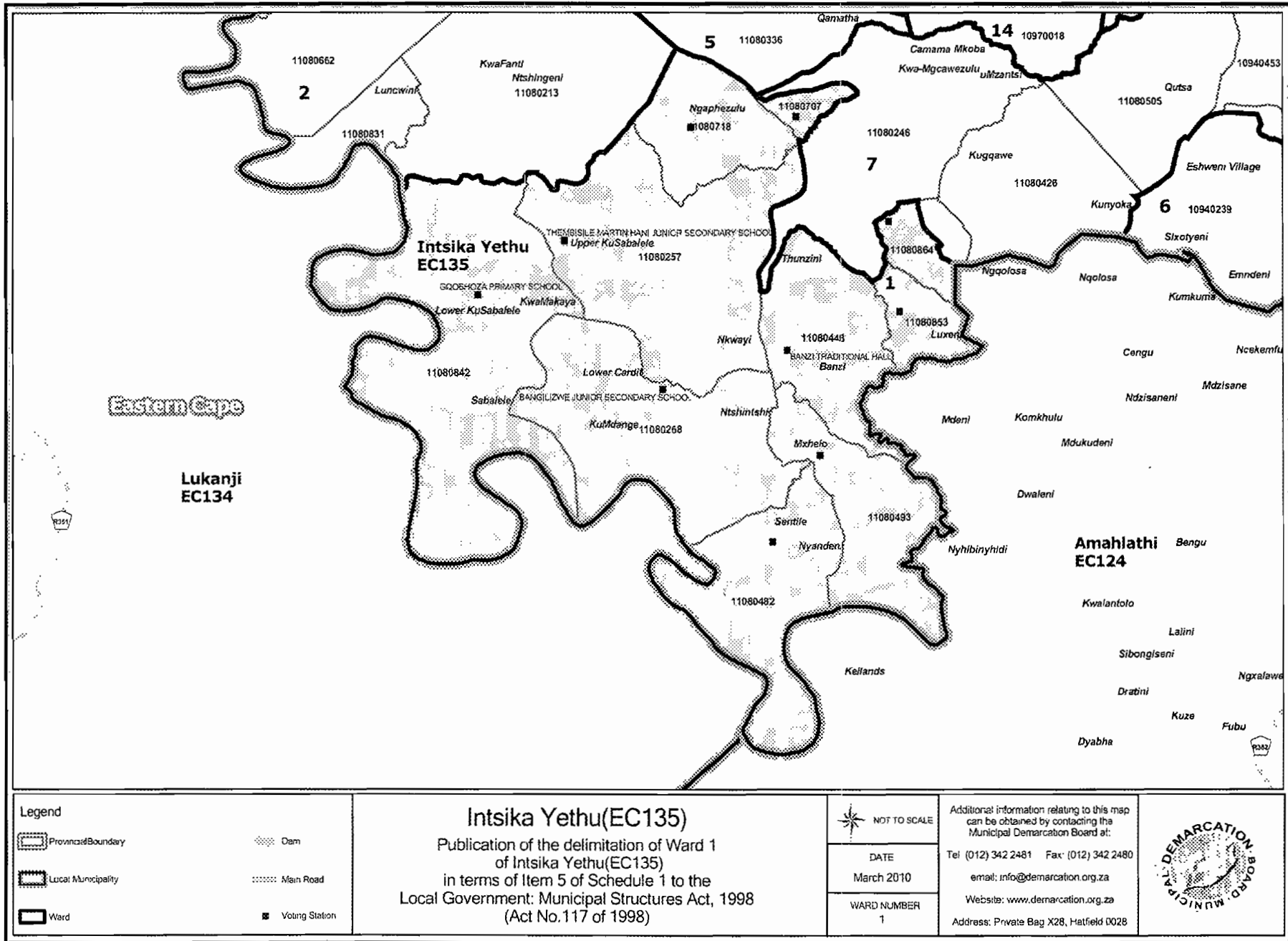
- die saamgevoegde stembedistrikte vorm 'n aaneenlopende wyk;
- die getal kiesers in elke wyk is binne die minimum en maksimum getal wat per wyk toegelaat word;
- die voorgestelde wyke voldoen in die algemeen aan die kriteria.

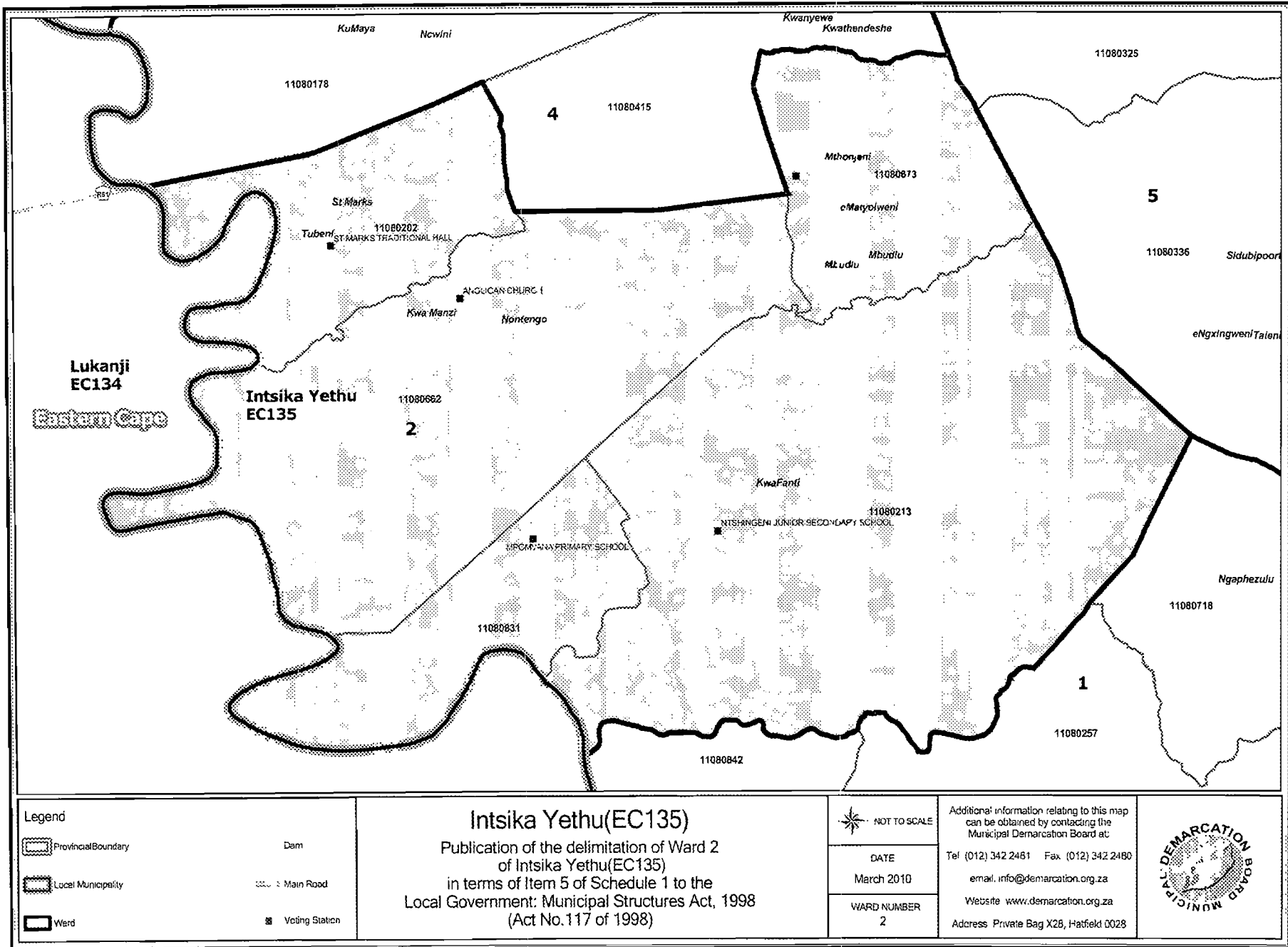
HANDTEKENING

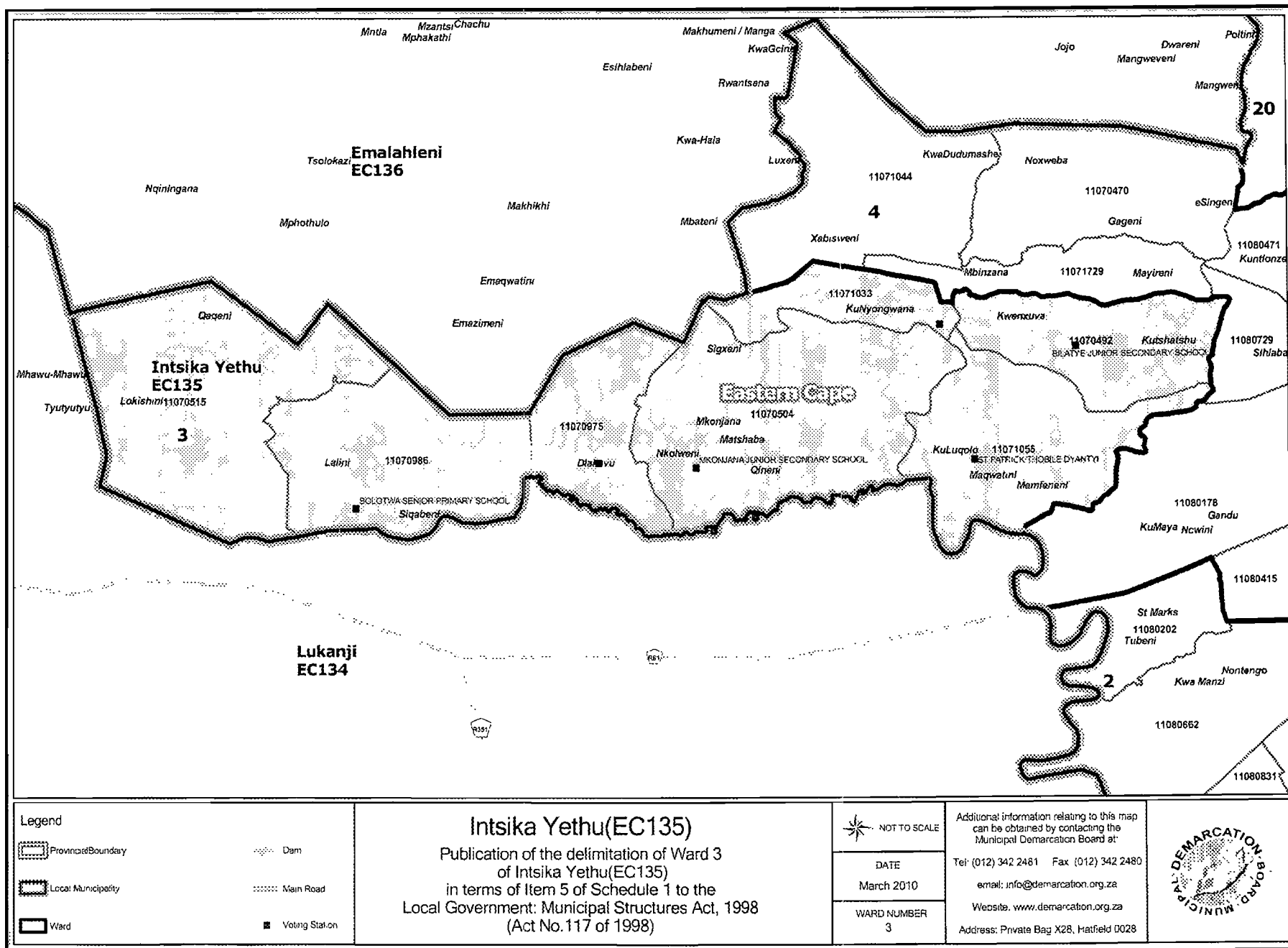
NAAM EN VAN

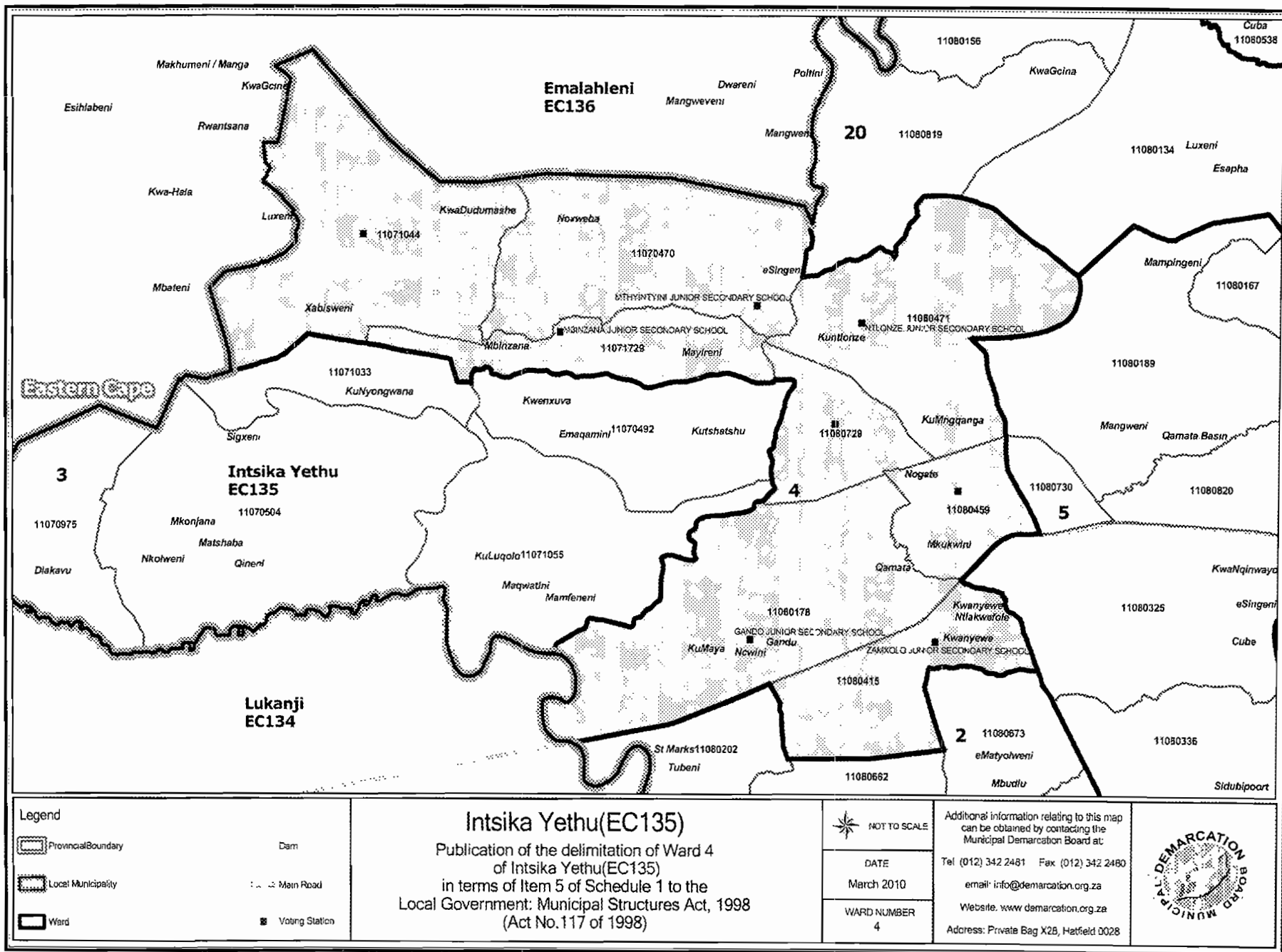
DATUM

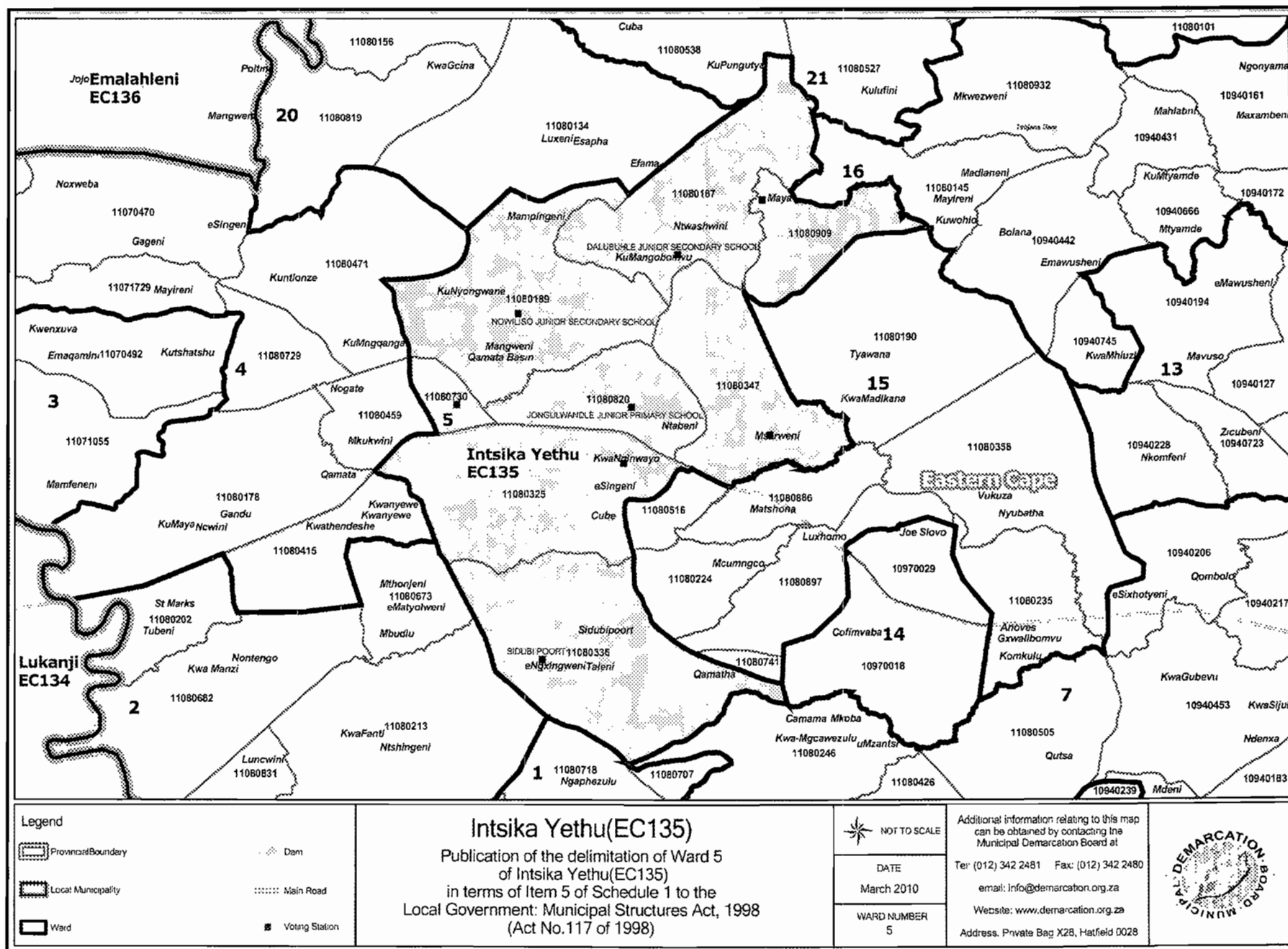


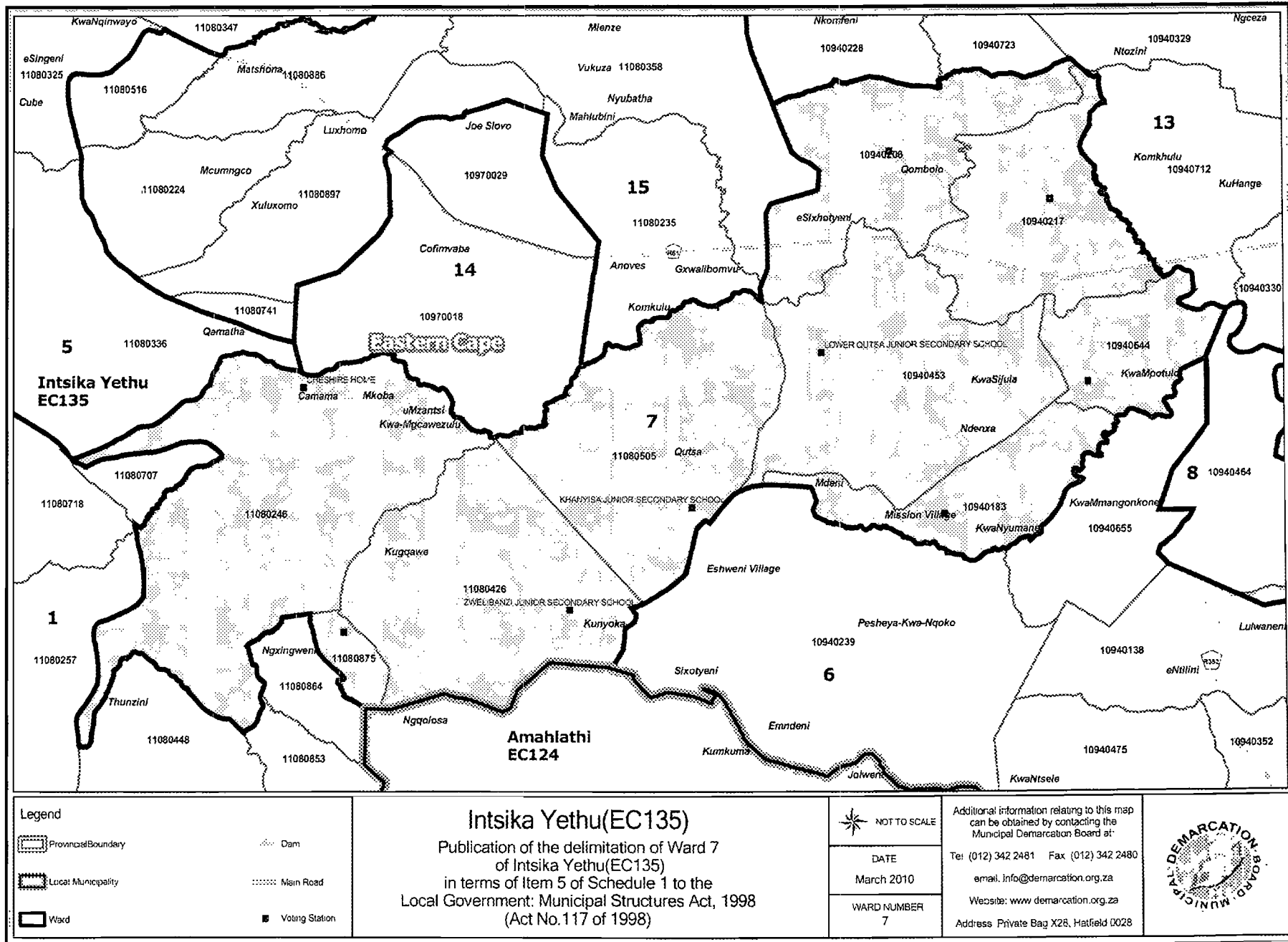


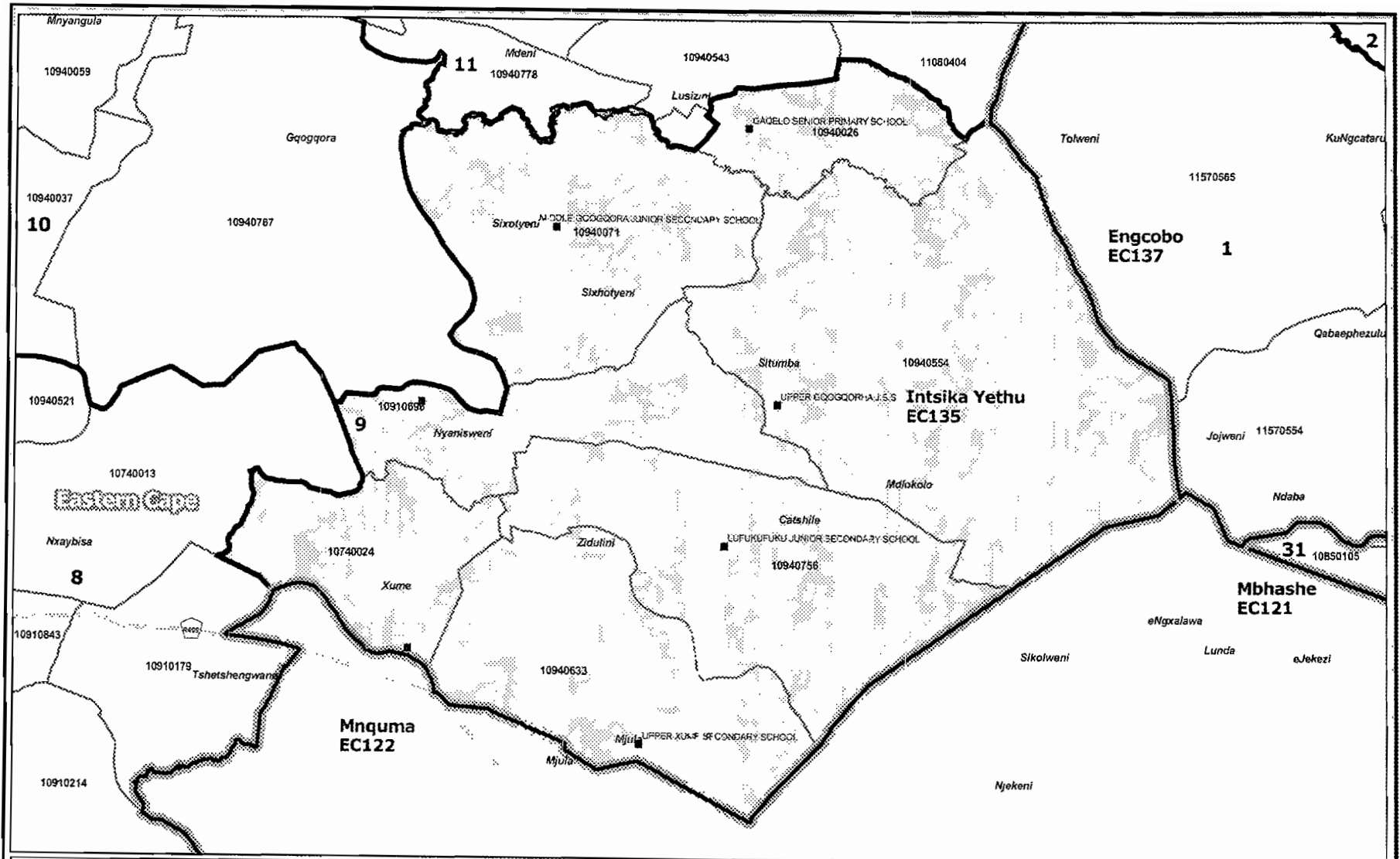












<p>Legend</p> <p>Provincial Boundary</p> <p>Local Municipality</p> <p>Ward</p> <p>Dam</p> <p>Main Road</p> <p>Voting Station</p>	<p align="center">Intsika Yethu(EC135)</p> <p align="center">Publication of the delimitation of Ward 9 of Intsika Yethu(EC135) in terms of Item 5 of Schedule 1 to the Local Government: Municipal Structures Act, 1998 (Act No.117 of 1998)</p>	<p align="center">NOT TO SCALE</p> <p>DATE March 2010</p> <p>WARD NUMBER 9</p> <p>Additional information relating to this map can be obtained by contacting the Municipal Demarcation Board at:</p> <p>Tel (012) 342 2481 Fax (012) 342 2480</p> <p>email: info@demarcation.org.za</p> <p>Website: www.demarcation.org.za</p> <p>Address: Private Bag X28, Hatfield 0028</p>	
---	---	---	--

