

PROVINCE OF THE EASTERN CAPE  
IPHONDO LEMPUMA KOLONI  
PROVINSIE OOS-KAAP

**Provincial Gazette  
Igazethi Yephondo  
Provinsiale Koerant**

**Vol. 17**

BISHO/  
KING WILLIAM'S TOWN, 19 MARCH 2010

**No. 2312**  
(Extraordinary)

**IMPORTANT NOTICE**

The Government Printing Works will not be held responsible for faxed documents not received due to errors on the fax machine or faxes received which are unclear or incomplete. Please be advised that an "OK" slip, received from a fax machine, will not be accepted as proof that documents were received by the GPW for printing. If documents are faxed to the GPW it will be the sender's responsibility to phone and confirm that the documents were received in good order.

Furthermore the Government Printing Works will also not be held responsible for cancellations and amendments which have not been done on original documents received from clients.

**CONTENTS • INHOUD**

<i>No.</i>		<i>Page No.</i>	<i>Gazette No.</i>
<b>GENERAL NOTICE • ALGEMENE KENNISGEWING</b>			
102	Local Government: Municipal Structures Act (117/1998): Municipal Demarcation Board: Delimitation of municipal wards: Engcobo Local Municipality (EC137) .....	3	2312
102	Wet op Plaaslike Regering: Munisipale Strukture (117/1998): Munisipale Afbakeningsraad: Afbakening van munisipale wyke: Engcobo Plaaslike Munisipaliteit (EC137) .....	10	2312

---

## GENERAL NOTICE ALGEMENE KENNISGEWING

---

### NOTICE 102 OF 2010

#### MUNICIPAL DEMARCATION BOARD DELIMITATION OF MUNICIPAL WARDS IN TERMS OF THE LOCAL GOVERNMENT: MUNICIPAL STRUCTURES ACT, 1998

#### Municipality : Engcobo Local Municipality (EC137)

In terms of Item 5(1) of Schedule 1 to the Local Government: Municipal Structures Act, 1998 (Act No. 117 of 1998) ("the Act") the Municipal Demarcation Board hereby publishes its delimitation of wards for the above-mentioned municipality. Particulars of the delimitation are listed in the Schedule.

In terms of Item 5(2) of Schedule 1 to the Act, any person aggrieved by a delimitation may, within 14 days of publication of this notice, submit objections in writing to:

The Municipal Demarcation Board  
Private Bag X28

**Hatfield**  
0028

Fax: 012-3422480

E-mail: [robert@demarcation.org.za](mailto:robert@demarcation.org.za)

The attached form MDB5 must please be used to object. The form is also available on [www.demarcation.org.za](http://www.demarcation.org.za)

**LANDIWE MAHLANGU**  
**CHAIRPERSON: MDB**

### SCHEDULE

In terms of Section 18(3) of the Local Government: Municipal Structures Act, 1998 (Act 117 of 1998) the MEC responsible for local government has determined that the municipal council consists of 40 councillors.

After having consulted the Independent Electoral Commission, The Municipal Demarcation Board has delimited the municipality into 20 wards in terms of Schedule 1 to the Act.

The number of registered voters in each ward does not vary by more than fifteen percent from the norm. The norm was determined by dividing the total number of voters on the municipal segment of the national common voters roll, namely 66760 voters on 12 February 2009, by the number of wards in the municipality.

An overview map of the boundary of the municipality, with the boundaries of the wards within the municipal boundary, and a map of each ward are attached. In case of a discrepancy between a map and this schedule, the map will prevail.

The ward numbers, the voting districts and voting stations in each ward, and the number of voters are as follows:

**WARD 1 comprises of a total of 2969 registered voters**

Voting District	Voting Station	Number of Voters
11571274	NGCATHAKO JUNIOR SECONDARY SCHOOL	337
11570037	GANYA JUNIOR SECONDARY SCHOOL	536
11570543	NGQUTURA JUNIOR SECONDARY SCHOOL	906
11570554	GCUWA JUNIOR SECONDARY SCHOOL	425
11570565	NXAMAGELE JUNIOR SECONDARY SCHOOL	765

**WARD 2 comprises of a total of 3029 registered voters**

Voting District	Voting Station	Number of Voters
11570576	CWECWENI JUNIOR SECONDARY SCHOOL	770
11570587	TATA JUNIOR SECONDARY SCHOOL	976
11570846	MQONCI JUNIOR SECONDARY SCHOOL	468
11570835	ZWELOXOLO JUNIOR SECONDARY SCHOOL	331
11570824	NTABENI JUNIOR SECONDARY SCHOOL	484

**WARD 3 comprises of a total of 2977 registered voters**

Voting District	Voting Station	Number of Voters
11571050	LAPETUKA SENIOR PRIMARY SCHOOL	448
11571072	QENGQELEKA JUNIOR SECONDARY SCHOOL	304
11571106	NTSIMBA JUNIOR SECONDARY SCHOOL	491
11571061	SOBUZA JUNIOR SECONDARY SCHOOL	358
11571353	KIDSTON JUNIOR SECONDARY SCHOOL	161
11570712	ZWELIHLE SENIOR SECONDARY SCHOOL	446
11570510	DABULINGWE JUNIOR SECONDARY SCHOOL	453
11571094	BEKILENI JUNIOR SECONDARY SCHOOL	316

**WARD 4 comprises of a total of 3199 registered voters**

Voting District	Voting Station	Number of Voters
11571083	BAZINDLOVU SENIOR SECONDARY SCHOOL	391
11571049	KHANYOLWETHU SENIOR SECONDARY SCHOOL	394
11570701	COBOSI JUNIOR SECONDARY SCHOOL	737
11570497	MJANYANA SENIOR PRIMARY SCHOOL	379
11570509	QULUQU JUNIOR SECONDARY SCHOOL	752
11570442	NTLALUKANA JUNIOR SECONDARY SCHOOL	546

**WARD 5 comprises of a total of 2996 registered voters**

Voting District	Voting Station	Number of Voters
11570532	MBILINI JUNIOR SECONDARY SCHOOL	414
11570486	NGCACU JUNIOR SECONDARY SCHOOL	589
11571139	MTAWELANGA SENIOR PRIMARY SCHOOL	431
11571140	QOTA JUNIOR SECONDARY SCHOOL	485
11571296	NKWENKWANA JUNIOR SECONDARY SCHOOL	518
11570431	MAQANDA JUNIOR SECONDARY SCHOOL	559

**WARD 6 comprises of a total of 3223 registered voters**

Voting District	Voting Station	Number of Voters
11570475	MBEKENI JUNIOR SECONDARY SCHOOL	572
11570969	PAKAMANI SENIOR SECONDARY SCHOOL	279
11570970	ST ALBANS JUNIOR SECONDARY SCHOOL	331
11570981	NGXEBE JUNIOR SECONDARY SCHOOL	550
11570723	DEBERA JUNIOR SECONDARY SCHOOL	554
11570464	ZILIMBOLA JUNIOR SECONDARY SCHOOL	512
11570453	ST ALBANS CHURCH	425

**WARD 7 comprises of a total of 3256 registered voters**

Voting District	Voting Station	Number of Voters
11570341	BEYELE JUNIOR SECONDARY SCHOOL	714
11570958	NOGWAZA SENIOR PRIMARY SCHOOL	530
11570947	ZAMIWONGA JUNIOR SECONDARY SCHOOL	264
11570116	EKUPHUMLENI STORE	392
11570385	NGUBESIZWE JUNIOR SECONDARY SCHOOL	616
11570903	QOBA JUNIOR SECONDARY SCHOOL	468
11571285	TSHATSHATSHA JUNIOR SECONDARY SCHOOL	272

**WARD 8 comprises of a total of 3529 registered voters**

Voting District	Voting Station	Number of Voters
11570891	PHAKAMISA P JUNIOR SECONDARY SCHOOL	420
11570868	HARGREAVES	380
11570790	MGUDLWA SENIOR SECONDARY SCHOOL	604
11570015	SIKOBENI SENIOR SECONDARY SCHOOL	569
11570880	BOJANE JUNIOR SECONDARY SCHOOL	470
11570330	LUCWECWE JUNIOR SECONDARY SCHOOL	538
11570600	JONGUBUHLE SENIOR PRIMARY SCHOOL	548

**WARD 9 comprises of a total of 3267 registered voters**

Voting District	Voting Station	Number of Voters
11571005	ENDUKU JUNIOR SECONDARY SCHOOL	360
11570329	MANZANA JUNIOR SECONDARY SCHOOL	1042
11490038	K. S. D. F.E.T	305
11570262	TSAZO JUNIOR SECONDARY SCHOOL	900
11570992	ST BARNABAS PARISH	146
11570396	GOBOTI JUNIOR SECONDARY SCHOOL	514

**WARD 10 comprises of a total of 3784 registered voters**

Voting District	Voting Station	Number of Voters
11490027	MASONWABENATHI SENIOR PRIMARY SCHOOL	1488
11570239	ALL SAINTS JUNIOR SECONDARY SCHOOL	720
11570284	NYANGA SENIOR SECONDARY SCHOOL	570
11570240	ZOLA SENIOR PRIMARY SCHOOL	524
11571027	ALL SAINTS HALL	482

**WARD 11 comprises of a total of 3081 registered voters**

Voting District	Voting Station	Number of Voters
11490016	ENGCOBO CORRECTIONAL CENTRE	2163
11570251	GQUTYINI J.S.S	385
11570925	CEFANE HOEK JUNIOR SECONDARY SCHOOL	238
11570789	ZWELIVUMILE SENIOR SECONDARY SCHOOL	295

**WARD 12 comprises of a total of 3443 registered voters**

Voting District	Voting Station	Number of Voters
11570206	VUKUKHANYE JUNIOR SECONDARY SCHOOL	369
11570857	MNTUNTLONI JUNIOR SECONDARY SCHOOL	432
11570194	NKWENKWEZI JUNIOR SECONDARY SCHOOL	430
11570149	ZADUNGENI JUNIOR SECONDARY SCHOOL	878
11570879	GWARUBANA SENIOR SECONDARY SCHOOL	644
11570228	LAHLANGUBO-MAGOPHENI JUNIOR SECONDARY SCHOOL	690

**WARD 13 comprises of a total of 3581 registered voters**

Voting District	Voting Station	Number of Voters
11570936	LOWER QEBE PRIMARY SCHOOL	302
11570060	UPPER SITOLENI JUNIOR SECONDARY SCHOOL	701
11570082	QEBE JUNIOR SECONDARY SCHOOL	499
11570127	QUTUBENI JUNIOR SECONDARY SCHOOL	677
11571016	POSWAYO JUNIOR SECONDARY SCHOOL	134
11570914	SITHONGA JUNIOR SECONDARY SCHOOL	573
11571207	KANYE JUNIOR SECONDARY SCHOOL	194
11570655	GULANDODA JUNIOR SECONDARY SCHOOL	501

**WARD 14 comprises of a total of 3596 registered voters**

Voting District	Voting Station	Number of Voters
11570217	CHEFANE JUNIOR SECONDARY SCHOOL	725
11571308	NDUNGUNYENI	171
11571128	KWAXOXO KOMKHULU	265
11571151	CACA SENIOR PRIMARY SCHOOL	254
11570318	NTLELELENGWANA JUNIOR SECONDARY SCHOOL	351
11570307	LUHEWINI JUNIOR SECONDARY SCHOOL	552
11570295	SILO JUNIOR SECONDARY SCHOOL	503
11571117	ZWELIDUMILE SENIOR PRIMARY SCHOOL	403
11571038	NOXOLO SENIOR PRIMARY SCHOOL	372

**WARD 15 comprises of a total of 3622 registered voters**

Voting District	Voting Station	Number of Voters
11570093	SENTUBE JUNIOR SECONDARY SCHOOL	707
11570183	MSINTSANA JUNIOR SECONDARY SCHOOL	386
11571320	NDOBE SENIOR PRIMARY SCHOOL	216
11570633	DABULAMANZI JUNIOR SECONDARY SCHOOL	635
11570363	MADOTYENI CLINIC	595
11571218	NOKIULULEKILE STORE	317
11571229	RASMENI JUNIOR SECONDARY SCHOOL	264
11571230	ZWELINZIMA JUNIOR SECONDARY SCHOOL	502

**WARD 16 comprises of a total of 3356 registered voters**

Voting District	Voting Station	Number of Voters
11570699	NGUBENGCUKA JUNIOR SECONDARY SCHOOL	506
11570420	MHLOPEKAZI JUNIOR SECONDARY SCHOOL	530
11570408	SITEBE JUNIOR SECONDARY SCHOOL	539
11571319	MOSHI JUNIOR SECONDARY SCHOOL	297
11570598	CLARKEBURY JUNIOR SECONDARY SCHOOL	497
11571162	GONGQOZAYO JUNIOR SECONDARY SCHOOL	348
11570688	ST JOSEPH APOSTOLIC CHURCH	639

**WARD 17 comprises of a total of 3410 registered voters**

Voting District	Voting Station	Number of Voters
11571184	ZANENGQELE JUNIOR SECONDARY SCHOOL	413
11571195	SIVIWE JUNIOR SECONDARY SCHOOL	443
11570150	BASHEE JUNIOR SECONDARY SCHOOL	489
11570161	AMAQWATI TRIBAL AUTHORITY	878
11570172	ZWELILUNGILE JUNIOR SECONDARY SCHOOL	693
11570419	DIDI JUNIOR SECONDARY SCHOOL	494

**WARD 18 comprises of a total of 3731 registered voters**

Voting District	Voting Station	Number of Voters
11570622	SANDILE JUNIOR SECONDARY SCHOOL	694
11570105	LOWER GQOBONCO JUNIOR SECONDARY SCHOOL	527
11570071	SITOZA JUNIOR SECONDARY SCHOOL	908
11571173	YAWA JUNIOR SECONDARY SCHOOL	339
11570374	TSHAPILE JUNIOR SECONDARY SCHOOL	678
11570138	MAJIIJA JUNIOR SECONDARY SCHOOL	585

**WARD 19 comprises of a total of 3723 registered voters**

Voting District	Voting Station	Number of Voters
11570745	LOWER GQAGA JUNIOR SECONDARY SCHOOL	466
11571342	NDLUNKULU JUNIOR SECONDARY SCHOOL	359
11571331	MNYOLO DRIFT STORE	221
11570767	DALIGQILI JUNIOR SECONDARY SCHOOL	425
11570756	JALISA JUNIOR SECONDARY SCHOOL	191
11570026	UPPER GQAGA JUNIOR SECONDARY SCHOOL	267
11570677	ZABASA JUNIOR SECONDARY SCHOOL	657
11570352	MNYOLO JUNIOR SECONDARY SCHOOL	538
11570059	NJONGOZABANTU JUNIOR SECONDARY SCHOOL	359
11570048	MGUDU JUNIOR SECONDARY SCHOOL	240

**WARD 20 comprises of a total of 2988 registered voters**

Voting District	Voting Station	Number of Voters
11570611	SINQUMENI JUNIOR SECONDARY SCHOOL	545
11570666	MNGQWAZI STORE	379
11570273	MANZIMDAKA JUNIOR SECONDARY SCHOOL	459
11571241	DALUXOLO JUNIOR SECONDARY SCHOOL	268
11571252	HLOPHEKAZI P.J.S.	392
11571263	MDANJELWA JUNIOR SECONDARY SCHOOL	308
11570734	GUBENXA JUNIOR SECONDARY SCHOOL	637

**Important:** This Schedule contains the total number of registered voters on the municipality's segment of the national common voters' roll on 12 February 2009 as provided for in Government Notice No. 750 published in Government Gazette No. 32407 of 15 July 2009. The voting district numbers, the voting district boundaries, voting stations, and the number of voters may change after the registration of voters for the 2011 local elections.



## FORM MDB5

## WARD DELIMITATION

OBJECTION IN TERMS OF ITEM 5(2) OF SCHEDULE 1 TO THE  
LOCAL GOVERNMENT: MUNICIPAL STRUCTURES ACT, 1998

Name of municipality:.....Code:.....

Name of aggrieved person/institution:.....

Contact person in case of an institution:.....

Address:.....

Tel. number:.....Cell number:.....

Email address:.....

I hereby object to the delimitation of the boundaries of the following wards:

WARD NUMBER	REASON/MOTIVATION

I request the Municipal Demarcation Board to consider the following alternative proposals:

Ward number	The ward should comprise of the following voting districts (Provide voting district number and the number of voters in brackets e.g. VD1123456(1500)+VD345678(2500)=4000)	Motivation

I confirm that:

- each cluster of voting districts form a contiguous ward;
- the number of voters in each ward fall within the minimum and maximum of voters allowed per ward;
- the proposed ward boundaries comply, in general, with the criteria.

SIGNATURE \_\_\_\_\_

NAME AND SURNAME \_\_\_\_\_

DATE \_\_\_\_\_

**KENNISGEWING 102 VAN 2010****MUNISIPALE AFBAKENINGSRAAD  
AFBAKENING VAN MUNISIPALE WYKE INGEVOLGE DIE WET OP  
PLAASLIKE REGERING: MUNISIPALE STRUKTURE, 1998****Munisipaliteit : Engcobo Plaaslike Munisipaliteit (EC137)**

Ingevolge Item 5(1) van Bylae 1 van die Wet op Plaaslike Regering: Munisipale Strukture, 1998 (Wet No. 117 van 1998) ("die Wet") publiseer die Munisipale Afbakeningsraad hiermee sy afbakening van wyke vir die bogenaaamde munisipaliteit. Besonderhede van die afbakening is vervat in die Bylae.

Ingevolge Item 5(2) van Bylae 1 van die Wet, kan enige persoon wat gegrief is deur 'n afbakening binne 14 dae na publikasie van hierdie kennisgewing skriftelike besware voorlê aan:

Die Munisipale Afbakeningsraad

Privaatsak X28

**Hatfield**

0028

Faks: 012-3422480

E-pos: [robert@demarcation.org.za](mailto:robert@demarcation.org.za)

Die aangehegte vorm MDB5 moet asseblief gebruik word om beswaar aan te teken. Die vorm is ook beskikbaar op [www.demarcation.org.za](http://www.demarcation.org.za)

**LANDIWE MAHLANGU**

**VOORSITTER: MUNISIPALE AFBAKENINGSRAAD**

**BYLAE**

Ingevolge Artikel 18(3) van die Wet op Plaaslike Regering: Munisipale Strukture, 1998 (Wet 117 van 1998) het die LUR vir plaaslike regering bepaal dat die munisipale raad bestaan uit 40 raadslede.

Na oorlegpleging met die Onafhanklike Verkiesingskommissie het die Munisipale Afbakeningsraad die munisipaliteit in 20 wyke afgebaken ingevolge Bylae 1 van die Wet.

Die getal geregistreerde kiesers in elke wyk, wyk nie meer as vyftien persent van die norm af nie. Die norm is bepaal deur die getal geregistreerde kiesers op die munisipale segment van die nasionale gemeenskaplike kieserslys, naamlik 66760 kiesers op 12 Februarie 2009, deur die getal wyke in die munisipaliteit te deel.

'n Oorsigkaart van die munisipale grens met die grense van die wyke binne die munisipale grens, en 'n kaart van elke wyk, is aangeheg. Ingeval van 'n verskil tussen 'n kaart en hierdie bylae, sal die kaart geld.

Die wyknommers, die stemdistrikte en stemlokale in elke wyk, en die getal kiesers is as volg:

**WYK 1 het 2969 kiesers**

Stemdistrik	Stemlokaal	Getal kiesers
11570037	GANYA JUNIOR SECONDARY SCHOOL	536
11570543	NGQUTURA JUNIOR SECONDARY SCHOOL	906
11570554	GCUWA JUNIOR SECONDARY SCHOOL	425
11570565	NXAMAGELE JUNIOR SECONDARY SCHOOL	765
11571274	NGCATHAKO JUNIOR SECONDARY SCHOOL	337

**WYK 2 het 3029 kiesers**

Stemdistrik	Stemlokaal	Getal kiesers
11570835	ZWELOXOLO JUNIOR SECONDARY SCHOOL	331
11570576	CWECWENI JUNIOR SECONDARY SCHOOL	770
11570824	NTABENI JUNIOR SECONDARY SCHOOL	484
11570846	MQONCI JUNIOR SECONDARY SCHOOL	468
11570587	TAFA JUNIOR SECONDARY SCHOOL	976

**WYK 3 het 2977 kiesers**

Stemdistrik	Stemlokaal	Getal kiesers
11571094	BEKILENI JUNIOR SECONDARY SCHOOL	316
11571061	SOBUZA JUNIOR SECONDARY SCHOOL	358
11571050	LAPETUKA SENIOR PRIMARY SCHOOL	448
11570712	ZWELIHLE SENIOR SECONDARY SCHOOL	446
11570510	DABULINGWE JUNIOR SECONDARY SCHOOL	453
11571106	NTSIMBA JUNIOR SECONDARY SCHOOL	491
11571072	QENGQELEKA JUNIOR SECONDARY SCHOOL	304
11571353	KIDSTON JUNIOR SECONDARY SCHOOL	161

**WYK 4 het 3199 kiesers**

Stemdistrik	Stemlokaal	Getal kiesers
11571049	KHANYOLWETHU SENIOR SECONDARY SCHOOL	394
11571083	BAZINDLOVU SENIOR SECONDARY SCHOOL	391
11570701	COBOSI JUNIOR SECONDARY SCHOOL	737
11570509	QULUQU JUNIOR SECONDARY SCHOOL	752
11570497	MJANYANA SENIOR PRIMARY SCHOOL	379
11570442	NTLALUKANA JUNIOR SECONDARY SCHOOL	546

**WYK 5 het 2996 kiesers**

Stemdistrik	Stemlokaal	Getal kiesers
11571140	QOTA JUNIOR SECONDARY SCHOOL	485
11570486	NGCACU JUNIOR SECONDARY SCHOOL	589
11571296	NKWENKWANA JUNIOR SECONDARY SCHOOL	518
11570431	MAQANDA JUNIOR SECONDARY SCHOOL	559
11571139	MTAWELANGA SENIOR PRIMARY SCHOOL	431
11570532	MBILINI JUNIOR SECONDARY SCHOOL	414

**WYK 6 het 3223 kiesers**

Stemdistrik	Stemlokaal	Getal kiesers
11570464	ZILIMBOLA JUNIOR SECONDARY SCHOOL	512
11570453	ST ALBANS CHURCH	425
11570475	MBEKENI JUNIOR SECONDARY SCHOOL	572
11570969	PAKAMANI SENIOR SECONDARY SCHOOL	279
11570981	NGXEBE JUNIOR SECONDARY SCHOOL	550
11570723	DEBERA JUNIOR SECONDARY SCHOOL	554
11570970	ST ALBANS JUNIOR SECONDARY SCHOOL	331

**WYK 7 het 3256 kiesers**

Stemdistrik	Stemlokaal	Getal kiesers
11570341	BEYELE JUNIOR SECONDARY SCHOOL	714
11570947	ZAMIWONGA JUNIOR SECONDARY SCHOOL	264
11570958	NOGWAZA SENIOR PRIMARY SCHOOL	530
11571285	TSHATSHATSIIA JUNIOR SECONDARY SCHOOL	272
11570116	EKUPHUMLENI STORE	392
11570385	NGUBESIZWE JUNIOR SECONDARY SCHOOL	616
11570903	QOBA JUNIOR SECONDARY SCHOOL	468

**WYK 8 het 3529 kiesers**

Stemdistrik	Stemlokaal	Getal kiesers
11570891	PHAKAMISA P JUNIOR SECONDARY SCHOOL	420
11570868	IIARGREAVES	380
11570880	BOJANE JUNIOR SECONDARY SCHOOL	470
11570790	MGUDLWA SENIOR SECONDARY SCHOOL	604
11570600	JONGUBUHLE SENIOR PRIMARY SCHOOL	548
11570330	LUCWECWE JUNIOR SECONDARY SCHOOL	538
11570015	SIKOBENI SENIOR SECONDARY SCHOOL	569

**WYK 9 het 3267 kiesers**

Stemdistrik	Stemlokaal	Getal kiesers
11570396	GOBOTI JUNIOR SECONDARY SCHOOL	514
11570329	MANZANA JUNIOR SECONDARY SCHOOL	1042
11570262	ISAZO JUNIOR SECONDARY SCHOOL	900
11570992	ST BARNABAS PARISH	146
11571005	ENDUKU JUNIOR SECONDARY SCHOOL	360
11490038	K. S. D. F.F.T	305

**WYK 10 het 3784 kiesers**

Stemdistrik	Stemlokaal	Getal kiesers
11570240	ZOLA SENIOR PRIMARY SCHOOL	524
11570239	ALL SAINTS JUNIOR SECONDARY SCHOOL	720
11571027	ALL SAINTS HALL	482
11490027	MASONWABENATHI SENIOR PRIMARY SCHOOL	1488
11570284	NYANGA SENIOR SECONDARY SCHOOL	570

**WYK 11 het 3081 kiesers**

Stemdistrik	Stemlokaal	Getal kiesers
11570925	CEFANE HOEK JUNIOR SECONDARY SCHOOL	238
11570789	ZWELIVUMILE SENIOR SECONDARY SCHOOL	295
11570251	GQUTYINI J.S.S	385
11490016	ENGCOBO CORRECTIONAL CENTRE	2163

**WYK 12 het 3443 kiesers**

Stemdistrik	Stemlokaal	Getal kiesers
11570879	GWARUBANA SENIOR SECONDARY SCHOOL	644
11570149	ZADUNGENI JUNIOR SECONDARY SCHOOL	878
11570228	LAHLANGUBO-MAGOPHENI JUNIOR SECONDARY SCHOOL	690
11570857	MNTUNTLONI JUNIOR SECONDARY SCHOOL	432
11570206	VUKUKHANYE JUNIOR SECONDARY SCHOOL	369
11570194	NKWENKWEZI JUNIOR SECONDARY SCHOOL	430

**WYK 13 het 3581 kiesers**

Stemdistrik	Stemlokaal	Getal kiesers
11571207	KANYE JUNIOR SECONDARY SCHOOL	194
11570060	UPPER SITOLENI JUNIOR SECONDARY SCHOOL	701
11570914	SITHONGA JUNIOR SECONDARY SCHOOL	573
11571016	POSWAYO JUNIOR SECONDARY SCHOOL	134
11570655	GULANDODA JUNIOR SECONDARY SCHOOL	501
11570936	LOWER QEBE PRIMARY SCHOOL	302
11570127	QUTUBENI JUNIOR SECONDARY SCHOOL	677
11570082	QEBE JUNIOR SECONDARY SCHOOL	499

**WYK 14 het 3596 kiesers**

Stemdistrik	Stemlokaal	Getal kiesers
11571128	KWAXOXO KOMKHULU	265
11570318	N'TLELELENGWANA JUNIOR SECONDARY SCHOOL	351
11571038	NOXOLO SENIOR PRIMARY SCHOOL	372
11570217	CHEFANE JUNIOR SECONDARY SCHOOL	725
11571151	CACA SENIOR PRIMARY SCHOOL	254
11570295	SILO JUNIOR SECONDARY SCHOOL	503
11571117	ZWELIDUMILE SENIOR PRIMARY SCHOOL	403
11570307	LUHEWINI JUNIOR SECONDARY SCHOOL	552
11571308	NDUNGUNYENI	171

**WYK 15 het 3622 kiesers**

Stemdistrik	Stemlokaal	Getal kiesers
11570183	MSINTSANA JUNIOR SECONDARY SCHOOL	386
11570363	MADOTYENI CLINIC	595
11571320	NDOBE SENIOR PRIMARY SCHOOL	216
11571230	ZWELINZIMA JUNIOR SECONDARY SCHOOL	502
11571229	RASMEI JUNIOR SECONDARY SCHOOL	264
11571218	NOKHULULEKILE STORE	317
11570093	SENTUBE JUNIOR SECONDARY SCHOOL	707
11570633	DABULAMANZI JUNIOR SECONDARY SCHOOL	635

**WYK 16 het 3356 kiesers**

Stemdistrik	Stemlokaal	Getal kiesers
11570420	MHLOPEKAZI JUNIOR SECONDARY SCHOOL	530
11570408	SITEBE JUNIOR SECONDARY SCHOOL	539
11570688	ST JOSEPH APOSTOLIC CHURCH	639
11570598	CLARKEBURY JUNIOR SECONDARY SCHOOL	497
11571319	MOSHI JUNIOR SECONDARY SCHOOL	297
11571162	GONGQOZAYO JUNIOR SECONDARY SCHOOL	348
11570699	NGUBENGCUKA JUNIOR SECONDARY SCHOOL	506

**WYK 17 het 3410 kiesers**

Stemdistrik	Stemlokaal	Getal kiesers
11570172	ZWELILUNGILE JUNIOR SECONDARY SCHOOL	693
11571195	SIVIWE JUNIOR SECONDARY SCHOOL	443
11570419	DIDI JUNIOR SECONDARY SCHOOL	494
11570161	AMAQWATI TRIBAL AUTHORITY	878
11570150	BASHEE JUNIOR SECONDARY SCHOOL	489
11571184	ZANENGQELE JUNIOR SECONDARY SCHOOL	413

**WYK 18 het 3731 kiesers**

Stemdistrik	Stemlokaal	Getal kiesers
11570622	SANDILE JUNIOR SECONDARY SCHOOL	694
11570374	TSHAPILE JUNIOR SECONDARY SCHOOL	678
11570138	MAJJA JUNIOR SECONDARY SCHOOL	585
11571173	YAWA JUNIOR SECONDARY SCHOOL	339
11570105	LOWER GQOBONCO JUNIOR SECONDARY SCHOOL	527
11570071	SITOA JUNIOR SECONDARY SCHOOL	908

**WYK 19 het 3723 kiesers**

Stemdistrik	Stemlokaal	Getal kiesers
11570026	UPPER GQAGA JUNIOR SECONDARY SCHOOL	267
11570048	MGUDU JUNIOR SECONDARY SCHOOL	240
11570756	JALISA JUNIOR SECONDARY SCHOOL	191
11571331	MNYOLO DRIFT STORE	221
11570767	DALIGQILI JUNIOR SECONDARY SCHOOL	425
11570352	MNYOLO JUNIOR SECONDARY SCHOOL	538
11570677	ZABASA JUNIOR SECONDARY SCHOOL	657
11570059	NJONGOZABANTU JUNIOR SECONDARY SCHOOL	359
11571342	NDLUNKULU JUNIOR SECONDARY SCHOOL	359
11570745	LOWER GQAGA JUNIOR SECONDARY SCHOOL	466

**WYK 20 het 2988 kiesers**

Stemdistrik	Stemlokaal	Getal kiesers
11570273	MANZIMDAKA JUNIOR SECONDARY SCHOOL	459
11571263	MDANJELWA JUNIOR SECONDARY SCHOOL	308
11571252	HLOPHEKAZI P.J.S.	392
11571241	DALUXOLO JUNIOR SECONDARY SCHOOL	268
11570734	GUBENXA JUNIOR SECONDARY SCHOOL	637
11570611	SINQUMENI JUNIOR SECONDARY SCHOOL	545
11570666	MNGQWAZI STORE	379

**Belangrik:** Hierdie Bylae bevat die totale getal geregistreerde kiesers op die munisipaliteit se segment van die nasionale gemeenskaplike kieserslys op 12 Februarie 2009, waarvoor voorsiening gemaak is in Goewermentskennisgewing No. 750 gepubliseer in Staatskoerant No. 32407 van 15 Julie 2009. Die stemdistriknommers, die grense van die stemdistrikte, die stemlokale, en die getal kiesers mag verander na die registrasie van kiesers vir die 2011 plaaslike verkiesings.

## VORM MDB5

## WYKSAFBAKENING

**BESWAAR INGEVOLGE ITEM 5(2) VAN BYLAE 1  
VAN DIE WET OP PLAASLIKE REGERING: MUNISIPALE STRUKTURE, 1998**

Naam van Munisipaliteit:.....Code:.....

Naam van beswaarde persoon/instelling:.....

Kontak persoon in geval van 'n instelling:.....

Adres:.....

Tel. nommer:..... Selfoonnommer:.....

E-pos adres:.....

Hiermee teken ek beswaar aan teen die afbakening van die grense van die volgende wyke:

WYK NOMMER	REDE/MOTIVERING

Ek versoek die Munisipale Afbakeningsraad om die volgende alternatiewe voorstelle te oorweeg:

Wyk nommer	Die wyk moet bestaan uit die volgende stembedistrikte: (Voorsien die stembedistriktnommer en die getal geregistreerde kiesers as volg $VD1123456(1500)+VD345678(2500)=4000$ )	Motivering

Ek bevestig dat:

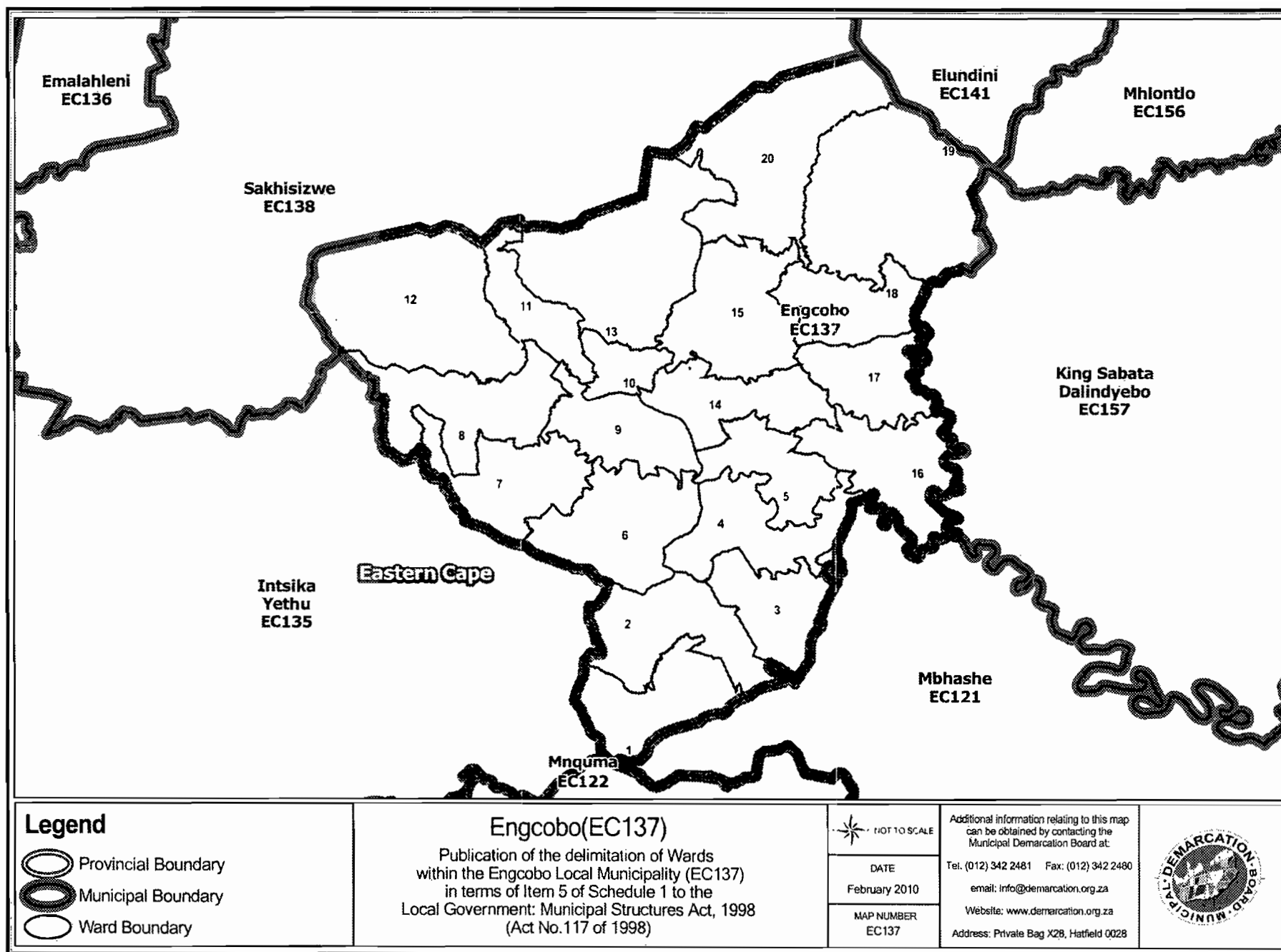
- die saamgevoegde stembedistrikte vorm 'n aaneenlopende wyk;
- die getal kiesers in elke wyk is binne die minimum en maksimum getal wat per wyk toegelaat word;
- die voorgestelde wyke voldoen in die algemeen aan die kriteria.

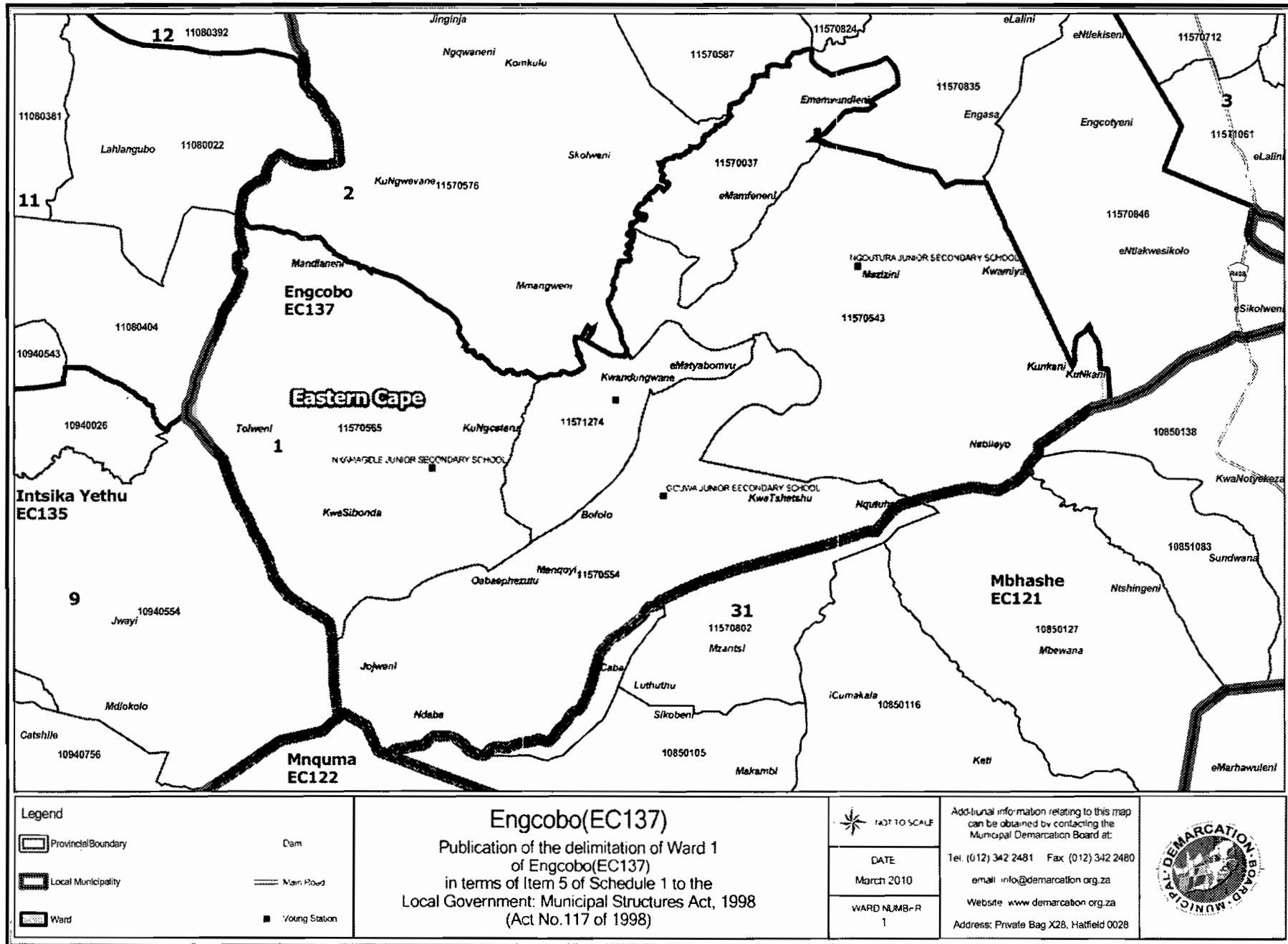
\_\_\_\_\_  
HANDTEKENING

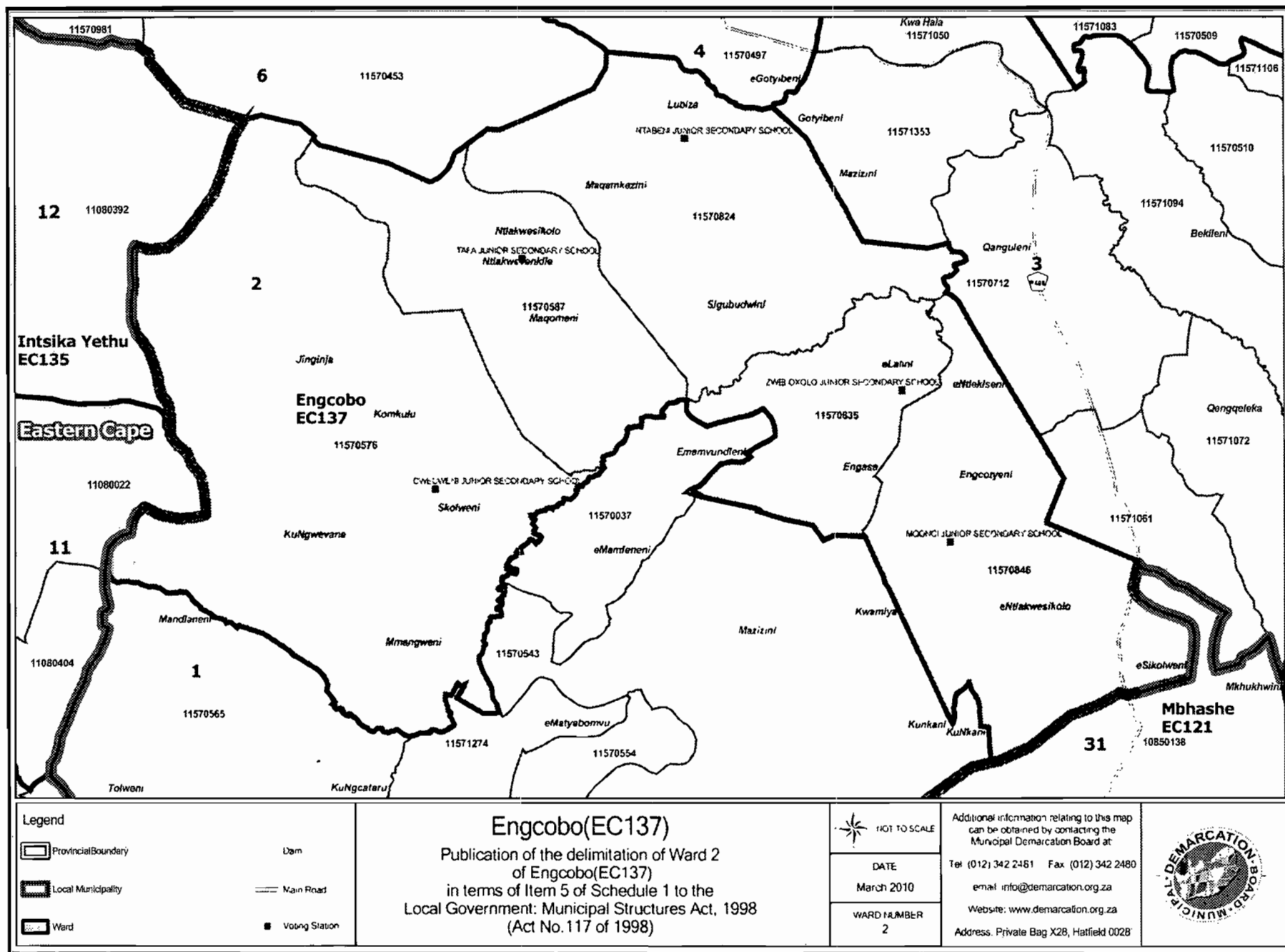
\_\_\_\_\_  
NAAM EN VAN

\_\_\_\_\_  
DATUM

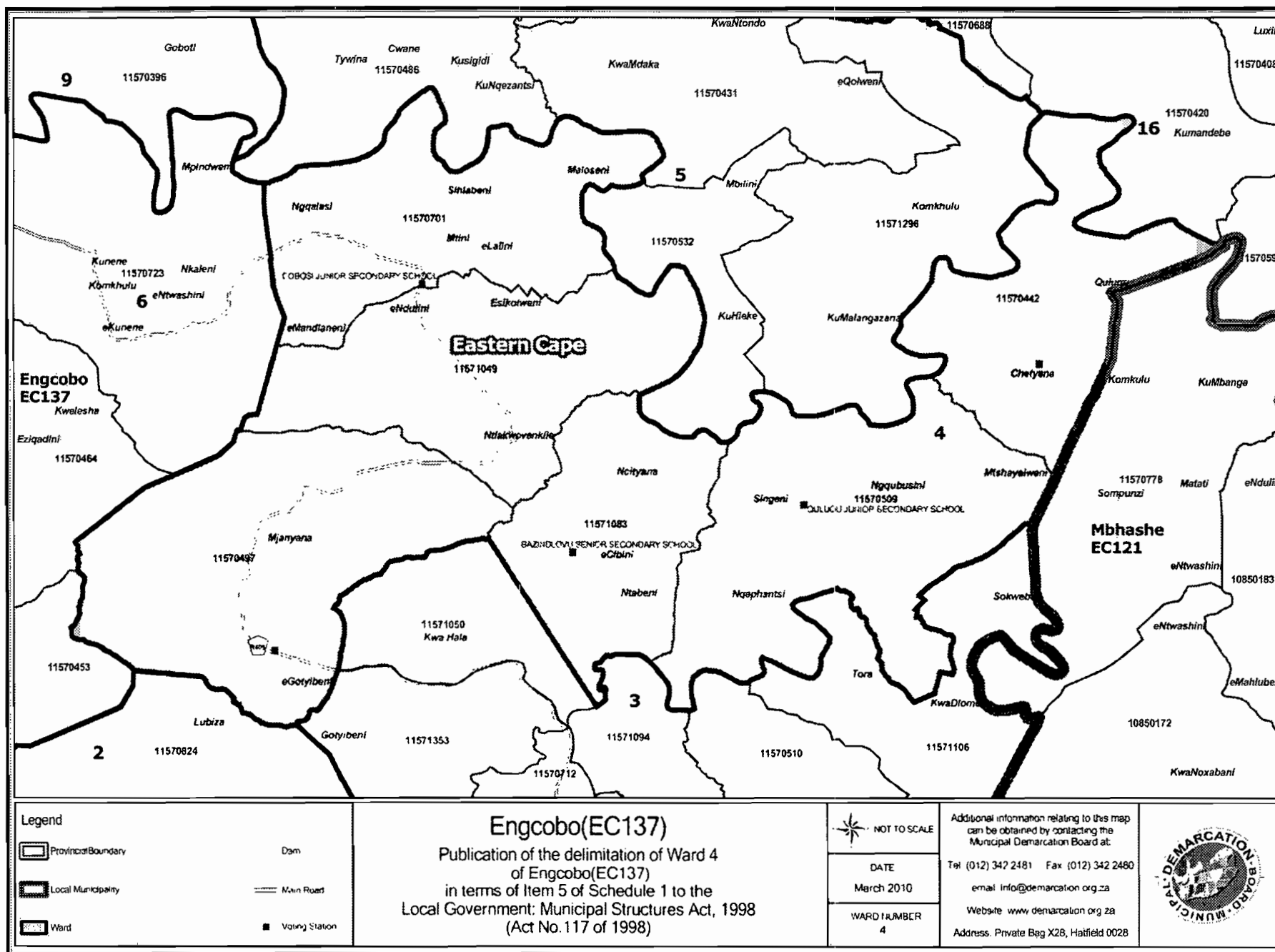


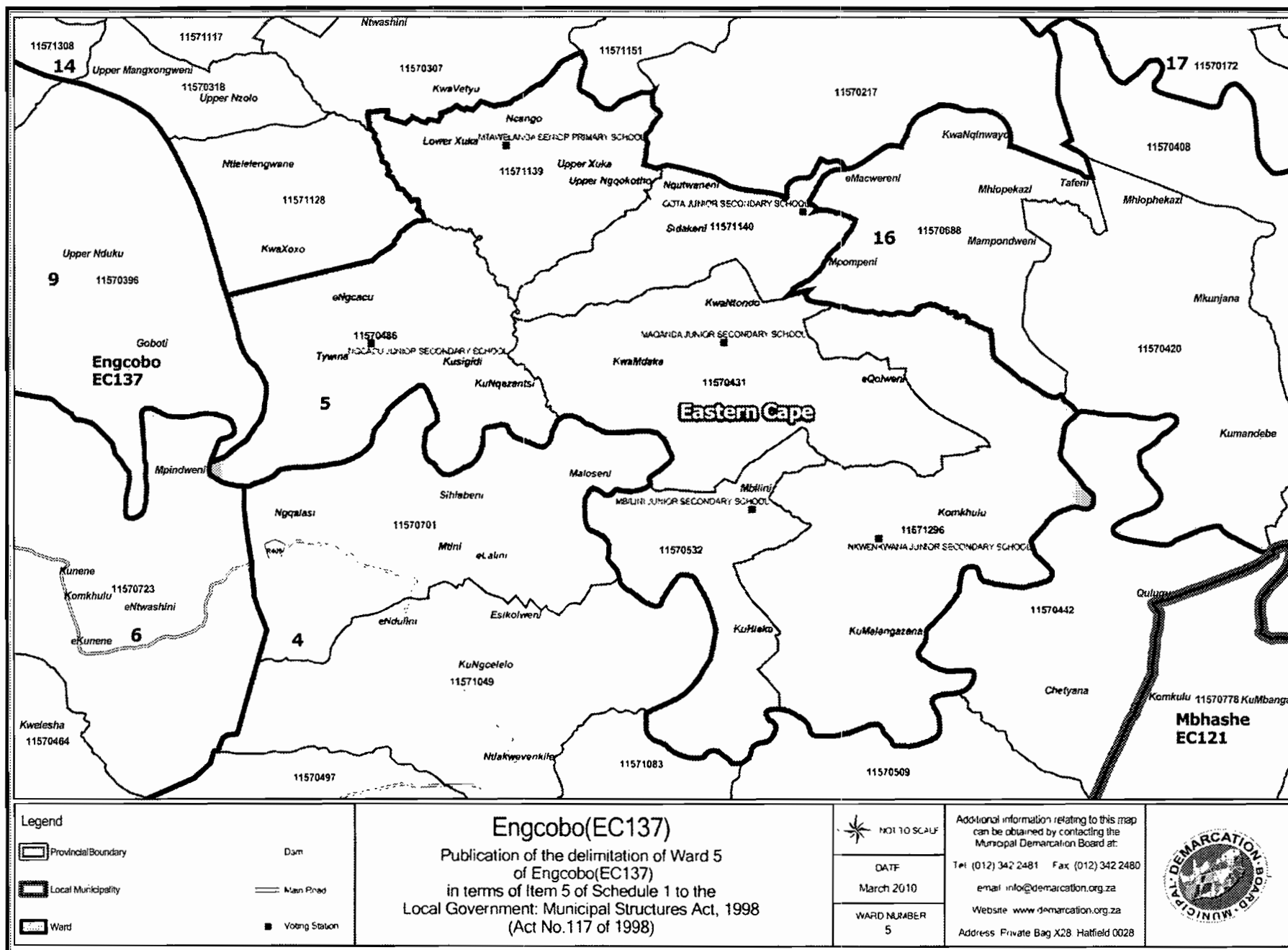




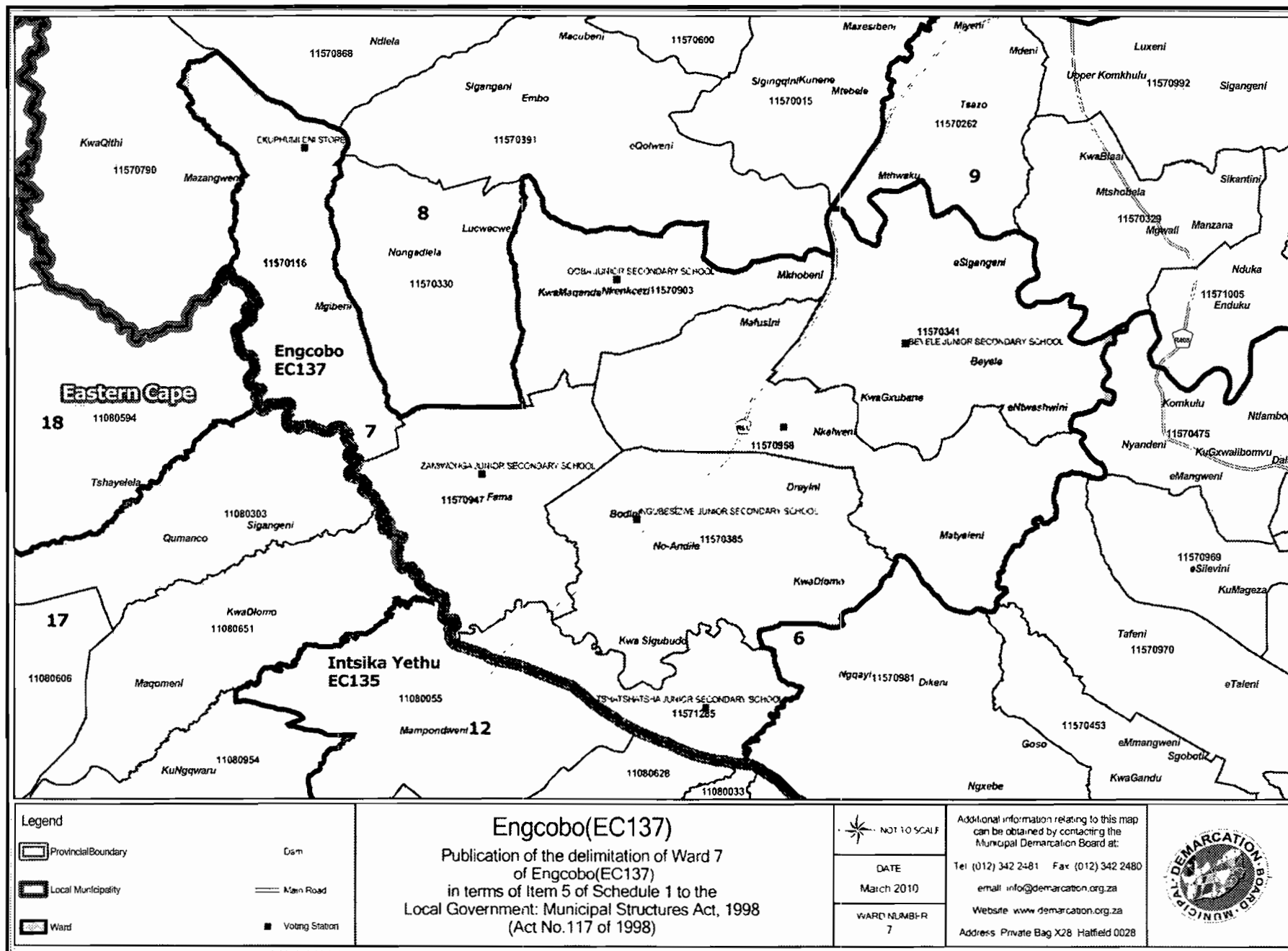




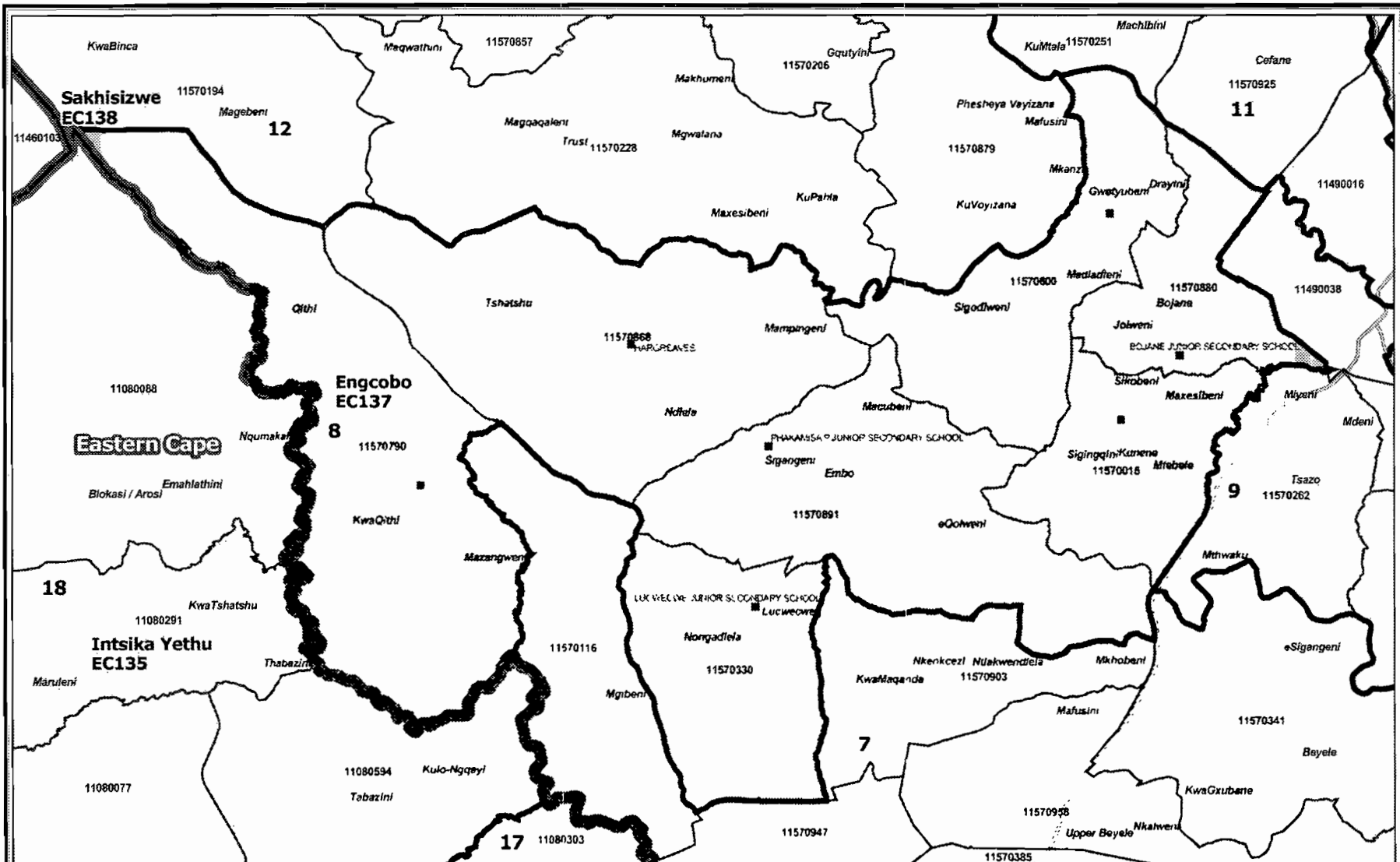












<p><b>Legend</b></p> <p> Provincial Boundary</p> <p> Local Municipality</p> <p> Ward</p> <p> Dam</p> <p> Main Road</p> <p> Voting Station</p>	<p align="center"><b>Engcobo(EC137)</b></p> <p align="center">Publication of the delimitation of Ward 8 of Engcobo(EC137) in terms of Item 5 of Schedule 1 to the Local Government: Municipal Structures Act, 1998 (Act No. 117 of 1998)</p>	<p align="center"> NOT TO SCALE</p> <p align="center">DATE March 2010</p> <p align="center">WARD NUMBER 8</p>	<p>Additional information relating to this map can be obtained by contacting the Municipal Demarcation Board at</p> <p>Tel: (012) 342 2481 Fax: (012) 342 2480</p> <p>email: info@demarcation.org.za</p> <p>Website: www.demarcation.org.za</p> <p>Address: Private Bag X28, Hatfield 0028</p> <p align="center"></p>
---	--	---	---



