



PROVINCE OF THE EASTERN CAPE
IPHONDO LEMPUMA KOLONI
PROVINSIE OOS-KAAP

**Provincial Gazette
Igazethi Yephondo
Provinsiale Koerant**

Vol. 17

BISHO/
KING WILLIAM'S TOWN, 15 APRIL 2010

No. 2341
(Extraordinary)

IMPORTANT NOTICE

The Government Printing Works will not be held responsible for faxed documents not received due to errors on the fax machine or faxes received which are unclear or incomplete. Please be advised that an "OK" slip, received from a fax machine, will not be accepted as proof that documents were received by the GPW for printing. If documents are faxed to the GPW it will be the sender's responsibility to phone and confirm that the documents were received in good order.

Furthermore the Government Printing Works will also not be held responsible for cancellations and amendments which have not been done on original documents received from clients.

CONTENTS • INHOUD

No.

Page
No. Gazette
No.**PROCLAMATION**

- | | | |
|--|----|------|
| 4 Eastern Cape Roads Act (3/2003): Proclamation of the upgrading widening, deviation and closure of a portion of Provincial Main Road 460, Coega, District of Port Elizabeth | 3 | 2341 |
| Oos-Kaapse Wet op Paaie (3/2003): Proklamasie van die opgradering, verbreding, verlegging en sluiting van 'n gedeelte van Provinsiale Hoofpad 460, Koega, distrik Port Elizabeth | 13 | 2341 |

PROCLAMATION

**By the Member of the Executive Council Responsible for
Roads and Transport**

No. 4

**PROCLAMATION OF THE UPGRADING, WIDENING, DEVIATION AND CLOSURE OF
A PORTION OF PROVINCIAL MAIN ROAD 460, COEGA, DISTRICT OF PORT
ELIZABETH ("MR460") IN TERMS OF THE EASTERN CAPE ROADS ACT, 2003
(ACT NO. 3 OF 2003)**

1. In terms of section 5 of the Eastern Cape Roads Act, 2003 (Act No. 3 of 2003) ("the Act") the MEC for Roads and Transport, Eastern Cape Province, hereby proclaims that a Provincial Main Road 460 Coega, District of Port Elizabeth, of varying widths, exists on land, as indicated on the Sketch Plans hereunder, and that the existing section of Provincial Main Road 460 indicated on the Sketch Plans be diverted and closed as indicated thereon. This entails that in some instances Provincial Main Road 460 exists on the properties shown on the Sketch Plans, where previously no Provincial Main Road existed, and that the previous alignment of the Provincial Main Road 460 is closed where it does not coincide with the alignment hereby proclaimed. It also entails that the existing Provincial Main Road 460 Coega, District of Port Elizabeth, is widened in certain instances.

2. The Sketch Plans and relevant documentation are available for inspection during office hours by any interested person at the Office of the District Roads Engineer, Struanway, Struandale, Port Elizabeth. Enquiries can be made to:

Mr Marius Keyser or Mrs Wilna Snyman

29 Western Road

Telephone number: (041) 452 2073

Reference: EC/MET/460

3. Further enquiries or relevant information may be requested in writing from:

The State Attorney
29 Western Road
Central
Port Elizabeth
Telephone: (041) 585 7921
Telefax: (041) 585 2687
Ref: Mr Johan Coetzee

4. Any interested person is advised to consult his/her legal representative in relation to this Proclamation.

5. This Proclamation takes effect from the date of its publication in the Provincial Gazette.

6. On such date of publication in the Provincial Gazette the MEC will take possession of the land and use it for purposes of a Provincial Road in terms of the Act.

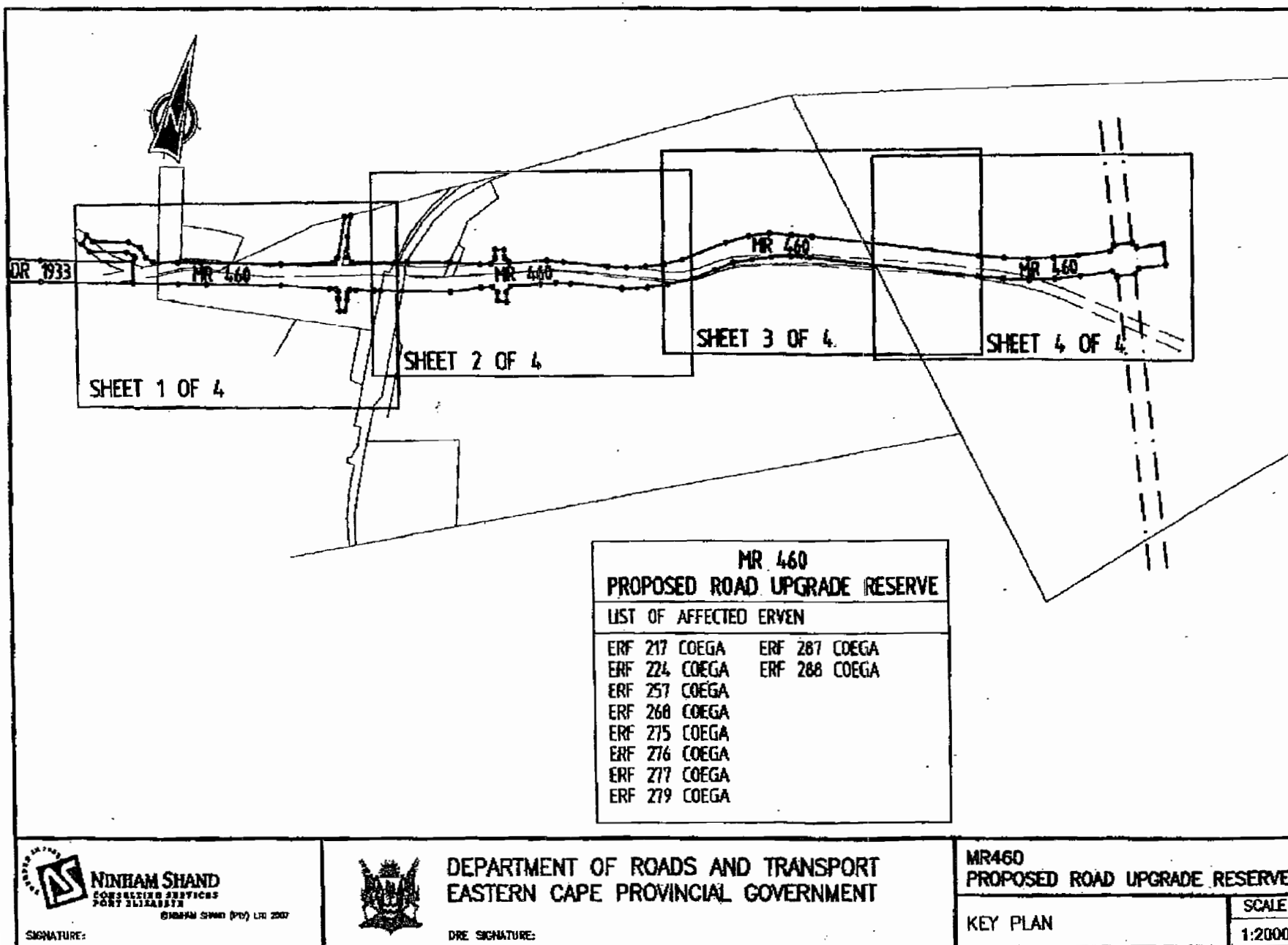
7. The MEC is liable to pay compensation for the land encroached upon by the Road, or the widening or deviation thereof in terms of section 12 of the Act, read with sections 12 and 26 of the Expropriation Act, 1975 (Act No. 63 of 1975) as well as section 25 of the Constitution of the Republic of South Africa, 1996.

8. Attention is drawn to the provisions of sections 8 to 12 and 14 of the Expropriation Act, 1975 (Act No. 63 of 1975).

9. A translation of this Proclamation in the official language of choice, may be requested.

Dated at BHISHO on this the 30th day of March 2010.


G BARRY
MEMBER OF THE EXECUTIVE COUNCIL ROADS AND TRANSPORT
EASTERN CAPE PROVINCE



NEW 80m ROAD RESERVE COORDINATES WG25								
POINT	Y-COORD	X-COORD	POINT	Y-COORD	X-COORD	POINT	Y-COORD	X-COORD
B1	-63784.35	3735639.25	B37	-60570.74	3737155.22	B71	-60765.80	3736963.11
B2	-63823.20	3735709.18	B38	-60565.00	3737167.89	B72	-60934.70	3736893.52
B3	-63718.31	3735767.48	B39	-60573.79	3737190.16	B73	-61056.94	3736848.73
B4	-63710.56	3735794.68	B39A	-60581.32	3737236.20	B74	-61099.96	3736828.51
B5	-63640.61	3735833.54	B40A	-60558.07	3737245.38	B75	-61109.53	3736801.92
B6	-63613.42	3735825.78	B40	-60536.59	3737204.85	B76	-61096.32	3736773.93
B7	-63491.92	3735893.30	B41	-60527.30	3737181.34	B77	-61133.52	3736759.04
B8	-63393.34	3735944.63	B42	-60514.21	3737175.39	B78	-61145.73	3736784.91
B9	-63292.12	3735990.51	B43	-60490.47	3737183.86	B79	-61172.37	3736794.49
B10	-63188.55	3736030.81	B44	-60289.75	3737251.94	B80	-61319.44	3736725.38
B11	-63090.44	3736065.41	B45	-59986.15	3737371.80	B81	-61389.78	3736703.31
B12	-62377.75	3736275.33	B46	-59873.38	3737416.33	B82	-61574.51	3736645.70
B13	-62298.00	3736302.93	B47	-59691.92	3737487.97	B83	-61652.17	3736618.10
B14	-62220.99	3736337.44	B48	-59662.54	3737413.56	B84	-61727.38	3736583.82
B15	-62147.30	3736378.58	B49	-59664.87	3737394.60	B85	-61799.36	3736543.21
B16	-62074.08	3736422.39	B50	-59658.80	3737390.27	B86	-61867.62	3736496.52
B17	-62012.40	3736479.23	B51	-59622.02	3737389.04	B87	-62019.02	3736463.73
B18	-61933.13	3736547.08	B52	-59474.76	3737445.19	B88	-62100.42	3736401.78
B19	-61841.58	3736611.13	B53	-59431.67	3737433.90	B89	-62180.24	3736257.22
B20	-61763.70	3736655.08	B54	-59439.67	3737394.56	B90	-62260.53	3736228.57
B21	-61661.59	3736700.31	B55	-59472.52	3737403.23	B91	-62354.93	3736198.66
B22	-61450.50	3736767.55	B56	-59615.31	3737348.79	B92	-63060.11	3735988.73
B23	-61385.76	3736790.02	B57	-59672.21	3737350.69	B93	-63161.58	3735955.49
B24	-61325.23	3736821.48	B58	-59709.20	3737377.10	B94	-63261.89	3735916.77
B25	-61210.52	3736875.32	B59	-59744.08	3737381.37	B95	-63350.34	3735872.69
B26	-61200.95	3736901.90	B60	-59844.00	3737341.92	B96	-63453.06	3735823.38
B27	-61217.04	3736935.99	B61	-59934.67	3737306.12	B97	-63574.57	3735755.84
B28	-61177.93	3736946.85	B62	-60260.37	3737177.53	B98	-63582.34	3735728.64
B29	-61164.74	3736918.90	B63	-60467.71	3737087.56	B99	-63652.27	3735689.78
B30	-61138.10	3736909.31	B64	-60478.72	3737061.00	B100	-63679.46	3735697.55
B31	-61092.41	3736930.75	B65	-60449.48	3736906.30			
B32	-60978.70	3736995.17	B66	-60471.83	3736890.16			
B33	-60784.61	3737072.28	B67	-60487.84	3736969.74			
B34	-60697.49	3737106.89	B68	-60517.27	3737044.27			
B35	-60670.69	3737117.54	B69	-60542.96	3737054.92			
B36	-60596.02	3737146.21	B70	-60717.58	3736982.98			

 **NINHAM SHAND**
CONSULTING SERVICES
PORT ELIZABETH
Company No. 2007 (Pty) Ltd 2007

SIGNATURE:



DEPARTMENT OF ROADS AND TRANSPORT
EASTERN CAPE PROVINCIAL GOVERNMENT

DRC SIGNATURE:

MR460
PROPOSED ROAD UPGRADE RESERVE

NEW ROAD RESERVE CO-ORDINATES	SCALE
----------------------------------	-------

EXISTING 40m ROAD RESERVE COORDINATES WG25								
POINT	Y-COORD	X-COORD	POINT	Y-COORD	X-COORD	POINT	Y-COORD	X-COORD
X1	-63820.33	3735992.32	X37	-59439.67	3737394.56	X73	-63354.12	3735973.33
X2	-63435.22	3736006.89	X38	-59530.67	3737418.20	X74	-63433.41	3735966.93
X3	-63358.67	3736013.08	X39	-59577.98	3737422.90	X75	-63798.55	3735953.12
X4	-63261.01	3736027.64	X40	-59706.93	3737416.96			
X5	-63169.55	3736050.50	X41	-59852.84	3737325.84			
X6	-62948.57	3736113.04	X42	-59871.14	3737317.54			
X7	-62398.48	3736298.67	X43	-59919.72	3737295.51			
X8	-62305.32	3736335.84	X44	-59977.44	3737277.94			
X9	-62125.00	3736416.36	X45	-60000.44	3737270.94			
X10	-62082.83	3736440.23	X46	-60062.16	3737252.35			
X11	-62047.00	3736465.63	X47	-60070.00	3737250.12			
X12	-61953.91	3736543.62	X48	-60151.02	3737224.57			
X13	-61891.81	3736581.11	X49	-60222.53	3737199.69			
X14	-61835.93	3736603.47	X50	-60372.91	3737136.77			
X15	-61412.27	3736733.82	X51	-60485.19	3737088.34			
X16	-61361.21	3736751.15	X52	-60449.48	3736906.30			
X17	-61315.65	3736772.23	X53	-60471.83	3736898.16			
X18	-60902.56	3736967.87	X54	-60508.64	3737078.03			
X19	-60851.57	3736988.79	X55	-60632.23	3737023.40			
X20	-60687.77	3737045.62	X56	-60714.76	3736993.83			
X21	-60647.38	3737060.43	X57	-60837.33	3736951.41			
X22	-60516.54	3737118.28	X58	-60885.62	3736931.64			
X23	-60388.73	3737173.51	X59	-61298.22	3736736.22			
X24	-60237.12	3737236.94	X60	-61346.43	3736713.96			
X25	-60163.77	3737262.48	X61	-61400.04	3736695.74			
X26	-60023.00	3737305.86	X62	-61823.22	3736565.53			
X27	-59933.93	3737332.99	X63	-61874.05	3736545.25			
X28	-59872.09	3737361.03	X64	-61928.96	3736512.35			
X29	-59781.70	3737419.62	X65	-62021.23	3736435.01			
X30	-59686.81	3737475.03	X66	-62061.56	3736406.36			
X31	-59646.50	3737498.57	X67	-62107.08	3736380.59			
X32	-59631.99	3737460.46	X68	-62289.65	3736299.03			
X33	-59578.23	3737462.93	X69	-62384.55	3736261.18			
X34	-59542.98	3737461.48	X70	-62937.63	3736074.56			
X35	-59510.99	3737454.54	X71	-63158.82	3736011.97			
X36	-59431.67	3737433.90	X72	-63253.13	3735988.42			



NINHAM SHAND
CONSULTING SERVICES
PORT ELIZABETH
NINHAM SHAND (PTY) LTD 2007

SIGNATURE:



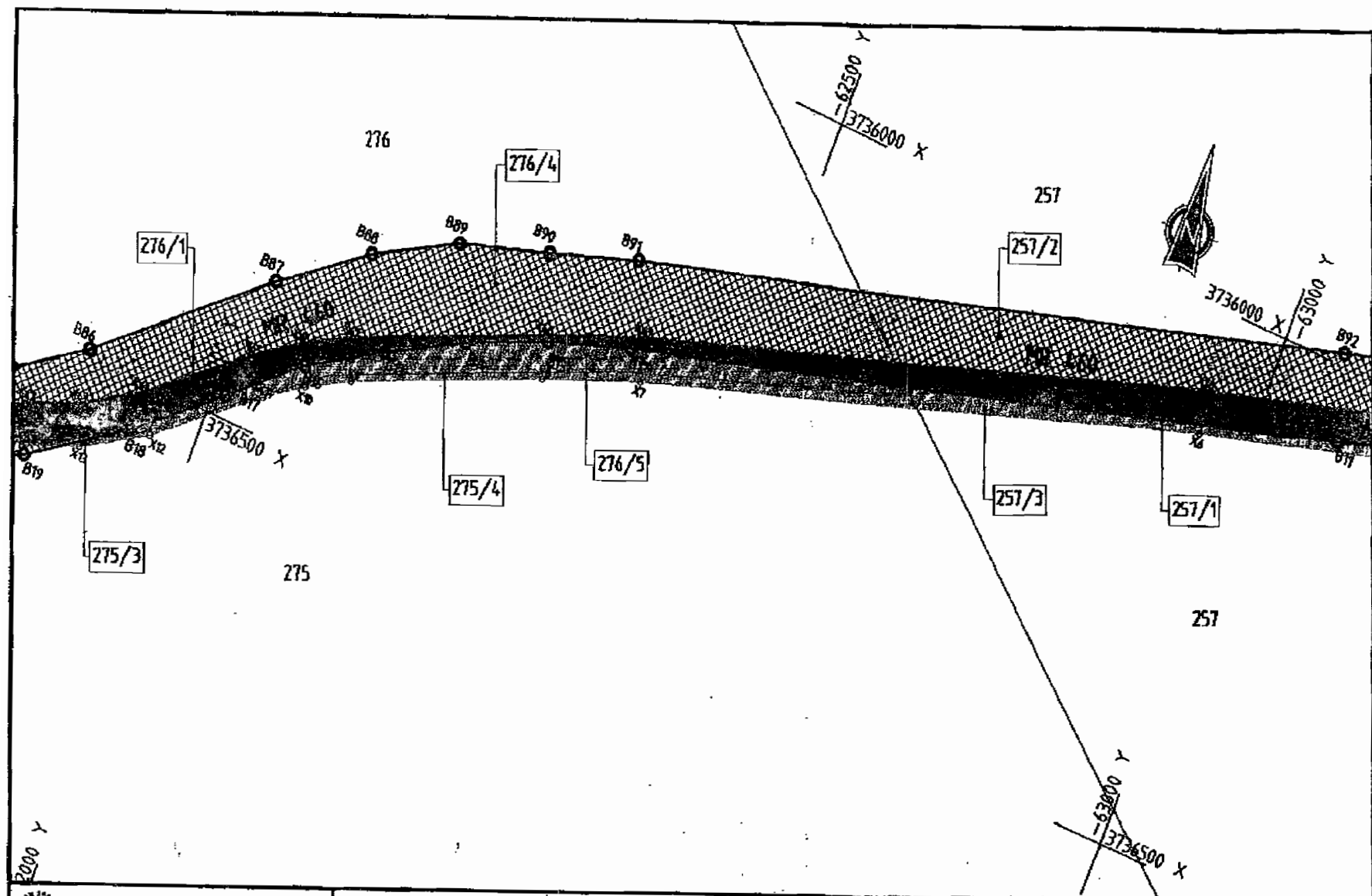
DEPARTMENT OF ROADS AND TRANSPORT
EASTERN CAPE PROVINCIAL GOVERNMENT



DRE SIGNATURE:

MR480
PROPOSED ROAD UPGRADE RESERVE

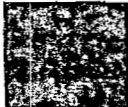
EXISTING ROAD RESERVE
CO-ORDINATES

SCALE

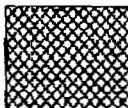


 <p>NINHAM STAND CONSULTING SERVICES PORT ELIZABETH <small>©NINHAM STAND (PTY) LTD 2007</small></p> <p>SIGNATURE: _____</p>	 <p>DEPARTMENT OF ROADS AND TRANSPORT EASTERN CAPE PROVINCIAL GOVERNMENT</p> <p>DRE SIGNATURE: _____</p>	<p>MR460 PROPOSED ROAD UPGRADE RESERVE</p> <table border="1"> <tr> <td data-bbox="1456 1396 1836 1452">AREAS SHEET 3 OF 4 SHEETS</td> <td data-bbox="1836 1396 1937 1452"> SCALE 1:5000 </td> </tr> </table>	AREAS SHEET 3 OF 4 SHEETS	SCALE 1:5000
AREAS SHEET 3 OF 4 SHEETS	SCALE 1:5000			


AREAS ON AFFECTED ERVEN (H _a)			
AREA No	CATEGORY 1	CATEGORY 2	CATEGORY 3
277/1		0.0175	
224/1	0.2967		
224/2		1.0355	
224/3			0.3440
224/4	0.4823		
224/5		0.2408	
257/1	1.8194		
257/2		8.8949	
257/3			2.9195
268/1	0.6997		
268/2			0.7149
268/3			0.0029
275/1	0.6465		
275/2		5.4166	
275/3			0.0102
275/4			0.5513
276/1	4.7811		
276/2		0.3296	
276/3			0.1065
276/4		5.9551	
276/5			1.3665
277/1	0.6218		
277/2		0.2789	
279/1	0.1491		
279/2		0.0447	
287/1			0.1555
287/2	0.0061		
288/1	3.5074		
288/2		4.7907	
288/3		0.2745	
288/4		0.2694	
TOTALS	12.3636	27.5112	5.5713



CATEGORY 1
AREA INSIDE EXISTING 40m ROAD RESERVE AND
INSIDE NEW ROAD RESERVE



CATEGORY 2
AREA OUTSIDE EXISTING 40m ROAD RESERVE AND
INSIDE NEW ROAD RESERVE



CATEGORY 3
AREA INSIDE EXISTING 40m ROAD RESERVE AND
OUTSIDE NEW ROAD RESERVE

PROKLAMASIE**Deur die Lid van die Uitvoerende Raad Verantwoordelik vir****Paale en Vervoer****No. 4****PROKLAMASIE VAN DIE OPGRADERING, VERBREIDING, VERLEGGING EN SLUITING VAN 'N GEDEELTE VAN PROVINSIALE HOOFPAD 460, KOEGA, DISTRIK VAN PORT ELIZABETH ("MR460") INGEVOLGE DIE OOS-KAAPSE WET OP PAAIE, 2003 (WET NR. 3 VAN 2003)**

1. Ingevolge artikel 5 van die Oos-Kaapse Wet op Paaie, 2003 (Wet nr. 3 van 2003) ("die Wet") proklameer die LUR vir Paaie en Vervoer, Oos-Kaapprovinsie, hiermee dat 'n Provinsiale Hoofpad 460 Koega, Distrik van Port Elizabeth, van verskillende breedtes, op grond bestaan soos in die Sketsplanne hieronder aangedui en dat die bestaande gedeelte van Provinsiale Hoofpad 460 wat op die Sketsplanne aangedui word, verlé en gesluit word soos daarop aangedui. Dit behels dat Provinsiale Hoofpad 460 op die eiendomme op die Sketsplanne aangetoon, in sekere gevalle bestaan waar daar voorheen geen Provinsiale Hoofpad bestaan het nie en dat die voormalige belyning van die Provinsiale Hoofpad 460 gesluit word waar dit nie met die belyning hierdeur geproklameer, ooreenstem nie. Dit behels ook dat die bestaande Provinsiale Hoofpad 460 Koega, Distrik van Port Elizabeth, in sekere gevalle verbreed word.

2. Die Sketsplanne en relevante dokumentasie is tydens kantoorure by die Kantoor van die Distrikspadingenieur, Struanweg, Struandale, Port Elizabeth, beskikbaar vir inspeksie deur enige belanghebbende persoon. Navrae kan gerig word aan:

Mnr. Marius Keyser of Mev. Wilna Snyman

Westernweg 29

Telefoonnommer: (041) 452 2073

Verwysing: EC/MET/460

3. Verdere navrae of relevante inligting kan skriftelik aangevra word vanaf:

Die Staatsadvokaat
Westernweg 29
Sentraal
Port Elizabeth
Telefoon: (041) 585 7921
Telefaks: (041) 585 2687
Verw.: Mnr. Johan Coetzee

4. Enige belanghebbende persoon word aangeraai om sy/haar regsverteenwoordiger in verband met hierdie Proklamasie te raadpleeg.

5. Hierdie Proklamasie tree vanaf die datum van die publikasie daarvan in die Provinsiale Staatskoerant in werking.

6. Die LUR sal op sodanige datum van publikasie in die Provinsiale Staatskoerant besit neem van die grond en dit ingevolge die Wet vir die doel van 'n Provinsiale Pad aanwend.

7. Die LUR is ingevolge artikel 12 van die Wet, gelees tesame met artikels 12 en 26 van die Wet op Onteining, 1975 (Wet nr. 63 van 1975), sowel as artikel 25 van die Grondwet van die Republiek van Suid-Afrika, 1996, aanspreeklik vir die betaling van vergoeding vir die grond waarop daar deur die Pad of die verbreding of verlegging daarvan Inbreuk gemaak word.

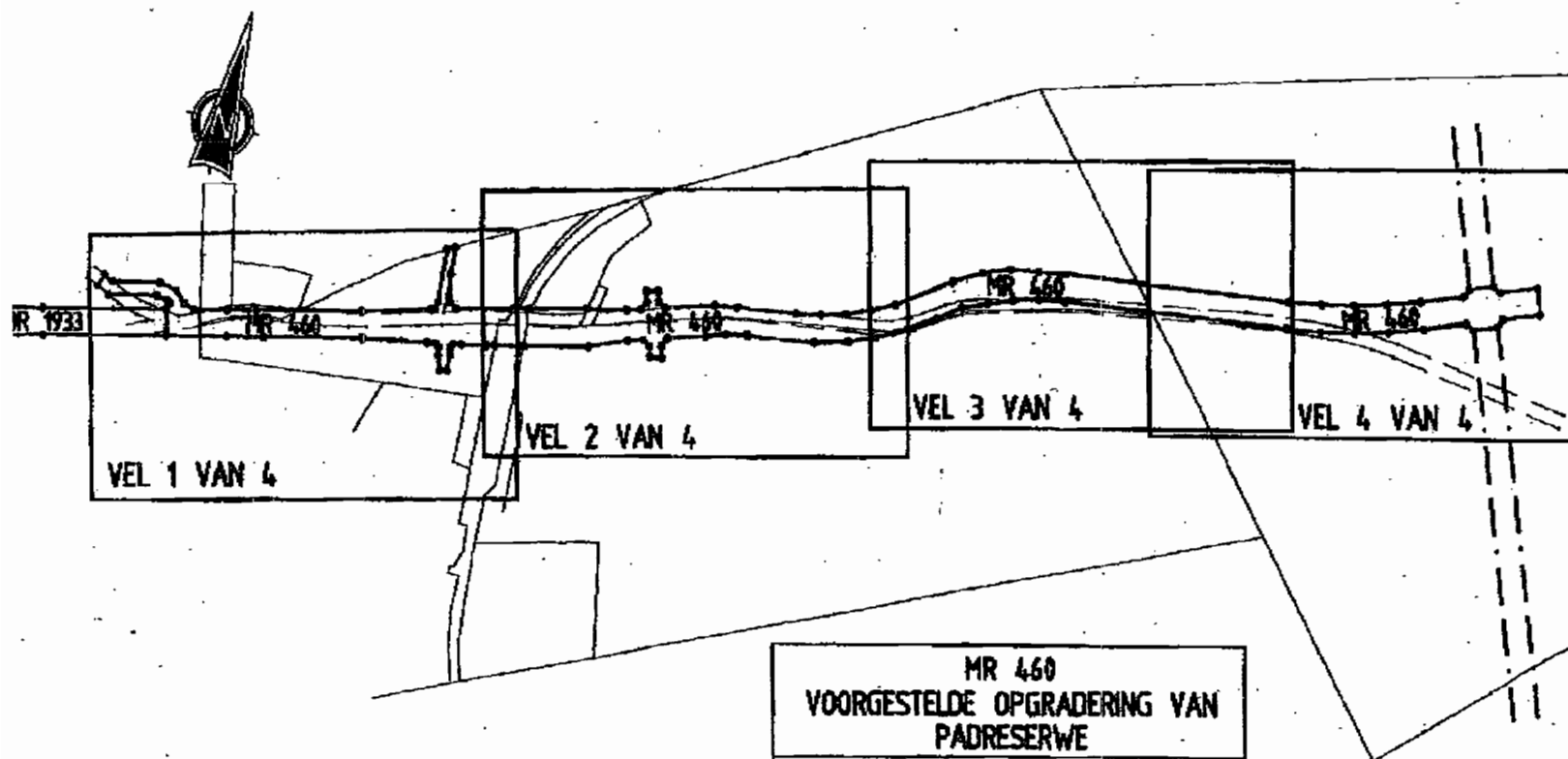
8. Aandag word gevestig op die bepalinge van artikels 8 tot 12 en 14 van die Wet op Onteining, 1975 (Wet nr. 63 van 1975).

9. 'n Vertaling van hierdie Proklamasie in die amptelike voorkeurtaal mag aangevra word.

Gedateer te BHISHO op hierdie die 30ste dag van Maart 2010.

G. BARRY

**LID VAN DIE UITVOERENDE RAAD PAAIE EN VERVOER
OOS-KAAPPROVINSIE**



MR 460
VOORGESTELDE OPGRADERING VAN
PADRESERWE

LYS VAN BETROKKE ERWE

ERF	217	COEGA	ERF	287	COEGA
ERF	224	COEGA	ERF	288	COEGA
ERF	257	COEGA			
ERF	268	COEGA			
ERF	275	COEGA			
ERF	276	COEGA			
ERF	277	COEGA			
ERF	279	COEGA			



NOTES:



DEPARTEMENT PAAIE EN VERVOER
OOSKAAP PROVINSIALE REGERING

EPI HANDYREKNING:

**MR480: VOORGESTELDE OPGRADERING
VAN PADRESERWE**

SLEUTELPLAN

SKAAL
1:20000

NUWE 80m PADRESERWE KO-ORDINATE WG25								
PUNT	Y-KOORD	X-KOORD	PUNT	Y-KOORD	X-KOORD	PUNT	Y-KOORD	X-KOORD
B1	-63784.35	3735639.25	B37	-60570.74	3737155.22	B71	-60765.80	3736963.11
B2	-63823.20	3735709.18	B38	-60565.00	3737167.89	B72	-60934.70	3736893.52
B3	-63718.31	3735767.48	B39	-60573.79	3737190.16	B73	-61056.94	3736848.73
B4	-63710.54	3735794.68	B39A	-60581.32	3737236.20	B74	-61099.96	3736828.51
B5	-63640.61	3735833.54	B40A	-60558.07	3737245.38	B75	-61109.53	3736801.92
B6	-63613.42	3735825.78	B40	-60536.59	3737204.85	B76	-61096.32	3736773.93
B7	-63491.92	3735893.30	B41	-60527.30	3737181.34	B77	-61133.52	3736759.04
B8	-63393.34	3735944.63	B42	-60514.21	3737175.39	B78	-61145.73	3736784.91
B9	-63292.12	3735990.51	B43	-60490.47	3737183.86	B79	-61172.37	3736794.49
B10	-63188.55	3736030.81	B44	-60289.75	3737251.94	B80	-61319.44	3736725.38
B11	-63098.44	3736065.41	B45	-59986.15	3737371.80	B81	-61389.78	3736703.31
B12	-62377.75	3736275.33	B46	-59873.38	3737416.33	B82	-61574.51	3736645.70
B13	-62298.00	3736302.93	B47	-59691.92	3737487.97	B83	-61652.17	3736618.10
B14	-62220.99	3736337.44	B48	-59662.54	3737413.56	B84	-61727.38	3736583.82
B15	-62147.30	3736378.58	B49	-59664.87	3737394.60	B85	-61799.36	3736543.21
B16	-62074.08	3736422.39	B50	-59658.80	3737390.27	B86	-61867.62	3736496.52
B17	-62012.40	3736479.23	B51	-59622.02	3737389.04	B87	-62019.02	3736363.73
B18	-61933.13	3736547.08	B52	-59474.76	3737445.19	B88	-62100.42	3736301.78
B19	-61841.58	3736611.13	B53	-59431.67	3737433.90	B89	-62180.24	3736257.22
B20	-61763.70	3736655.08	B54	-59439.67	3737394.56	B90	-62268.53	3736228.57
B21	-61661.59	3736700.31	B55	-59432.52	3737403.23	B91	-62354.93	3736198.66
B22	-61450.50	3736767.55	B56	-59675.31	3737348.79	B92	-63060.11	3735988.73
B23	-61385.76	3736790.02	B57	-59672.21	3737350.69	B93	-63161.58	3735955.49
B24	-61325.23	3736821.48	B58	-59709.20	3737377.10	B94	-63261.09	3735916.77
B25	-61210.52	3736875.32	B59	-59744.08	3737381.37	B95	-63358.34	3735872.69
B26	-61200.95	3736901.90	B60	-59844.00	3737341.92	B96	-63453.06	3735823.38
B27	-61217.04	3736935.99	B61	-59934.67	3737306.12	B97	-63574.57	3735755.84
B28	-61177.93	3736946.85	B62	-60260.37	3737177.53	B98	-63582.34	3735728.64
B29	-61164.74	3736918.90	B63	-60467.71	3737087.56	B99	-63652.27	3735689.78
B30	-61138.10	3736909.31	B64	-60478.72	3737061.00	B100	-63679.46	3735697.55
B31	-61092.41	3736930.75	B65	-60449.48	3736906.30			
B32	-60978.70	3736995.17	B66	-60471.83	3736890.16			
B33	-60784.61	3737072.28	B67	-60487.84	3736969.74			
B34	-60697.49	3737106.89	B68	-60517.27	3737044.27			
B35	-60670.69	3737117.54	B69	-60542.96	3737054.92			
B36	-60596.02	3737146.21	B70	-60717.58	3736982.98			

 **NINHAM SHAND**
PAARWENDE KUNSTE
POST DILIGENTIA

HANDTEKENING:



DEPARTEMENT PAAR EN VERVOER
OOSKAAP PROVINSIALE REGERING

DPI HANDTEKENING:

MR480: VOORGESTELDE OPGADERING
VAN PADRESERWE

NUWE PADRESERWE
KO-ORDINATE

SKAAL

BESTAANDE 40m PADRESERWE KO-ORDINATE WG25								
PUNT	Y-KOORD	X-KOORD	PUNT	Y-KOORD	X-KOORD	PUNT	Y-KOORD	X-KOORD
X1	-63820.33	3735992.32	X37	-59439.67	3737394.56	X73	-63354.12	3735973.33
X2	-63435.22	3736006.89	X38	-59530.67	3737418.20	X74	-63433.41	3735966.93
X3	-63358.67	3736013.08	X39	-59577.98	3737422.90	X75	-63798.55	3735953.12
X4	-63261.07	3736027.64	X40	-59706.93	3737416.96			
X5	-63169.55	3736050.50	X41	-59852.84	3737325.84			
X6	-62948.57	3736113.04	X42	-59871.14	3737317.54			
X7	-62398.48	3736298.67	X43	-59919.72	3737295.51			
X8	-62305.32	3736335.84	X44	-59977.44	3737277.94			
X9	-62125.00	3736416.36	X45	-60000.44	3737270.94			
X10	-62082.83	3736440.23	X46	-60062.16	3737252.35			
X11	-62047.00	3736465.63	X47	-60070.00	3737250.12			
X12	-61953.91	3736543.62	X48	-60151.02	3737224.57			
X13	-61891.81	3736581.11	X49	-60222.53	3737199.69			
X14	-61835.93	3736603.47	X50	-60372.91	3737136.77			
X15	-61412.27	3736733.82	X51	-60405.19	3737088.34			
X16	-61361.21	3736751.15	X52	-60449.48	3736906.30			
X17	-61315.65	3736772.23	X53	-60471.83	3736890.16			
X18	-60902.56	3736967.87	X54	-60508.64	3737078.03			
X19	-60851.57	3736988.79	X55	-60632.23	3737023.40			
X20	-60687.77	3737045.62	X56	-60714.76	3736993.83			
X21	-60647.38	3737060.43	X57	-60837.33	3736951.41			
X22	-60516.54	3737118.28	X58	-60885.62	3736931.64			
X23	-60388.73	3737173.51	X59	-61298.22	3736736.22			
X24	-60237.12	3737236.94	X60	-61346.43	3736713.96			
X25	-60163.77	3737262.48	X61	-61400.04	3736695.74			
X26	-60023.00	3737305.86	X62	-61823.22	3736565.53			
X27	-59933.93	3737332.99	X63	-61874.05	3736545.25			
X28	-59872.09	3737361.03	X64	-61928.96	3736512.35			
X29	-59781.70	3737419.62	X65	-62021.23	3736435.01			
X30	-59686.81	3737475.03	X66	-62061.56	3736406.36			
X31	-59646.50	3737498.57	X67	-62107.08	3736380.59			
X32	-59631.99	3737460.46	X68	-62289.65	3736299.03			
X33	-59578.23	3737462.93	X69	-62384.55	3736261.18			
X34	-59542.98	3737461.48	X70	-62937.63	3736074.56			
X35	-59510.99	3737454.54	X71	-63158.82	3736011.97			
X36	-59431.67	3737433.90	X72	-63253.13	3735988.42			



NINHAM SHAND
REGISTERED ENGINEER
PORT ELIZABETH

HANDTEKENING:



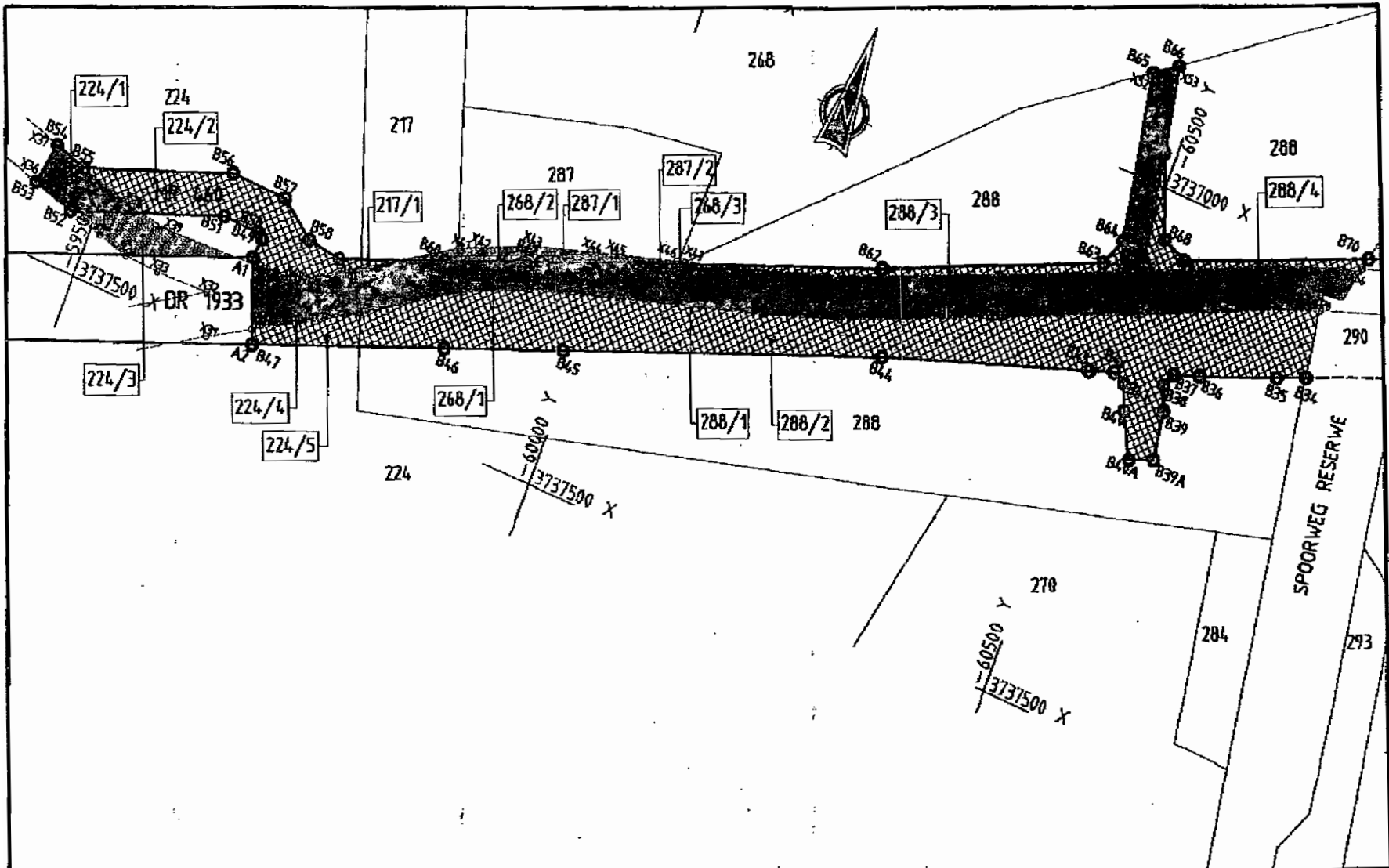
DEPARTEMENT PAAIE EN VERVOER
OOSKAAP PROVINSIALE REGERING

DPI HANDTEKENING:

MR480: VOORGESTELDE OPGRADERING
VAN PADRESERWE

BESTAANDE PADRESERWE
KO-ORDINATE

SKAAL
1:5000



NINHAM SHAND
LANDSKAPTEKONING, RIJNEN
FORT ELIZABETH

HANDTEKENING:



DEPARTEMENT PAAIE EN VERVOER
OOSKAAP PROVINSIALE REGERING

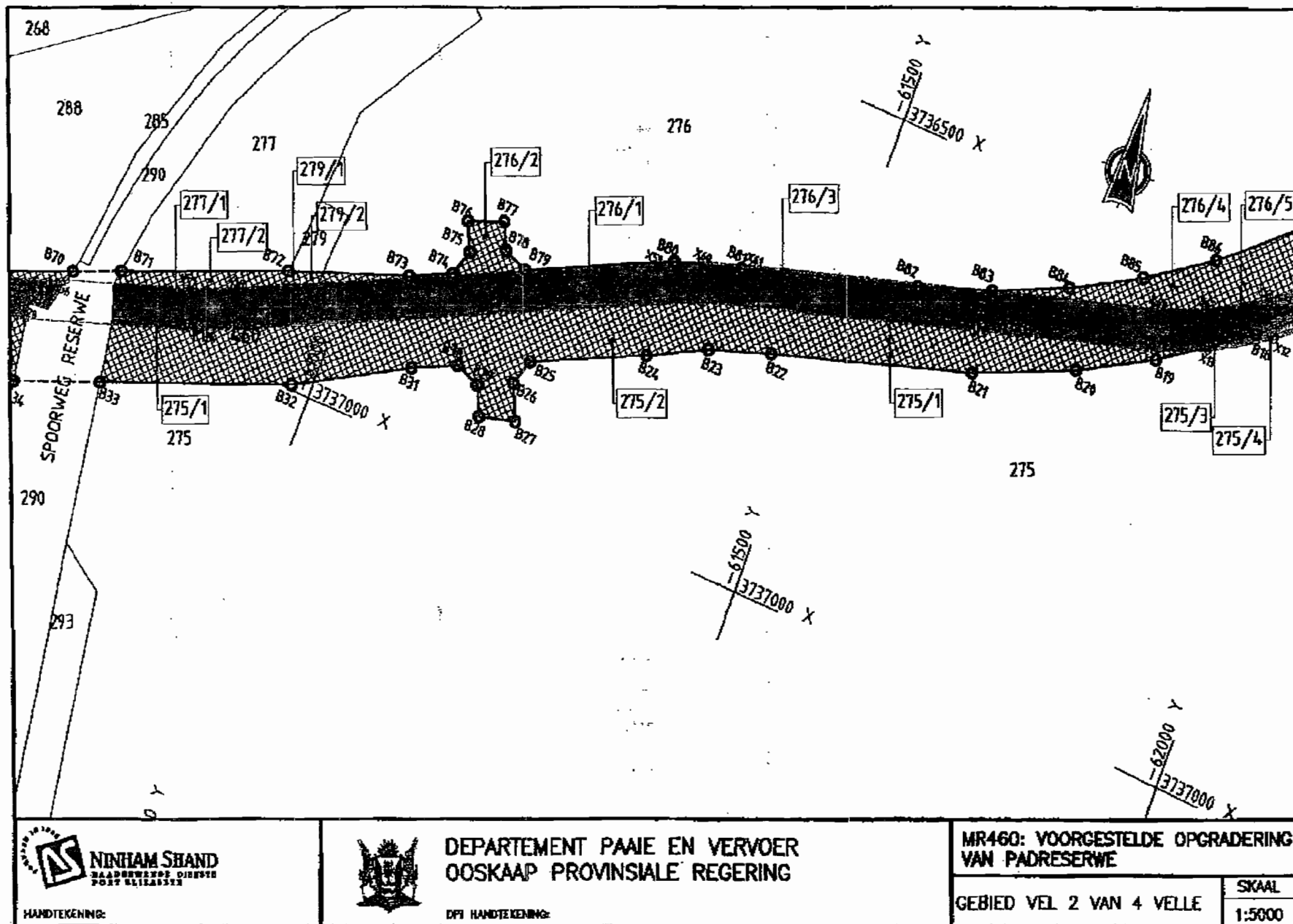
DPI: HANDTEKENING:

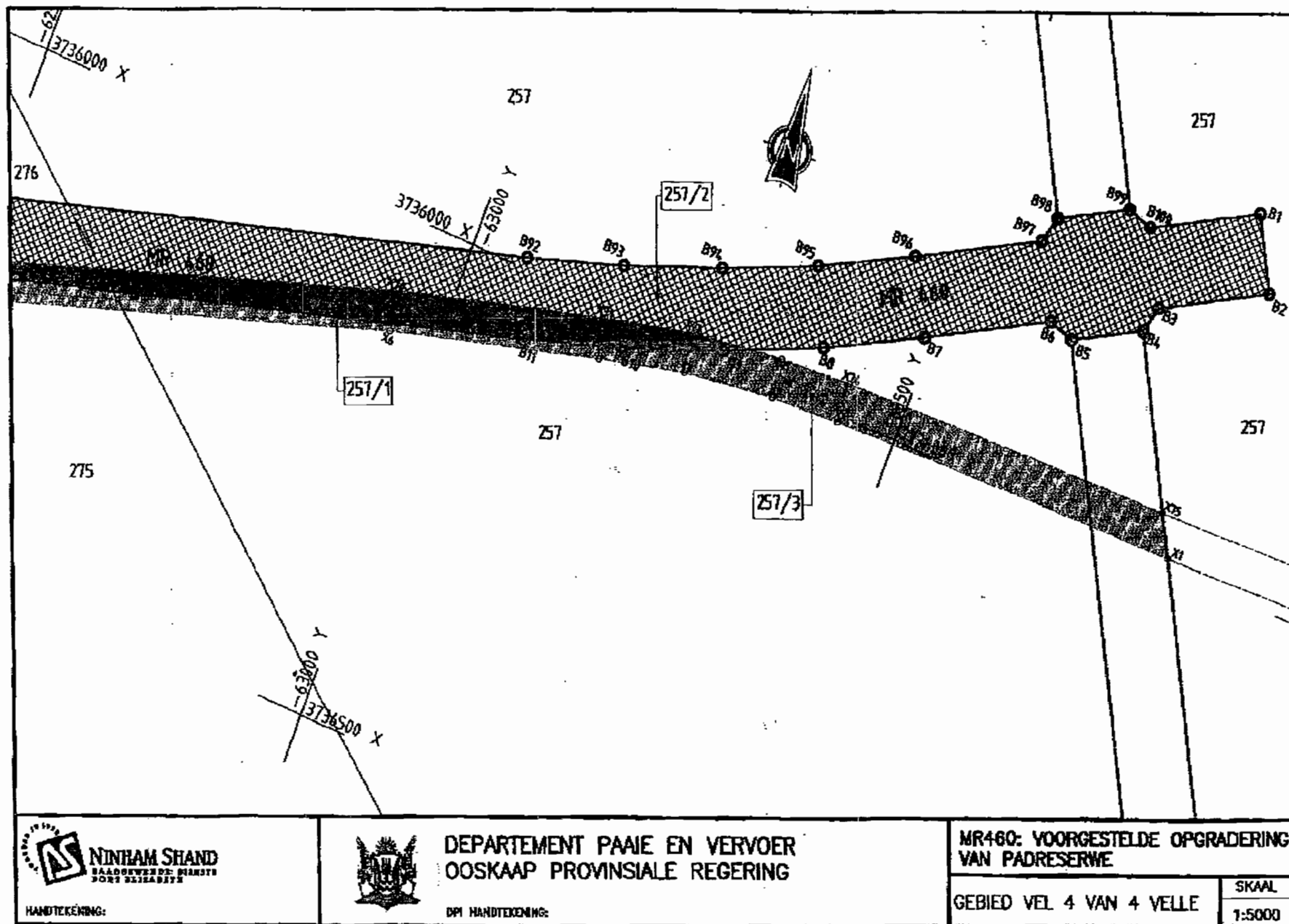
MR460: VOORGESTELDE OPGRADERING
VAN PADRESERVE

GEBIED VEL 1 VAN 4 VELLE


SKAAL

1:5000

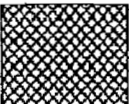





AREAS OP ERWE WAT GERAAK WORD (Ha)			
GEBIED NR	KATEGORIE 1	KATEGORIE 2	KATEGORIE 3
211/1		0.0175	
224/1	0.2967	1.0355	
224/2			0.3440
224/3			
224/4	0.4823	0.2408	
224/5			
257/1	1.8194	8.8949	
257/2			2.9195
257/3			
268/1	0.6997		0.1149
268/2			0.0029
268/3			
275/1	0.6465	5.4166	
275/2			0.0102
275/3			0.5513
275/4			
276/1	4.7811	0.3296	
276/2			0.1065
276/3		5.9751	
276/4			1.3665
276/5			
277/1	0.6218	0.2789	
277/2			
279/1	0.1491	0.0447	
279/2			
287/1			0.1555
287/2	0.0061		
288/1	3.5074	4.7907	
288/2		0.2745	
288/3		0.2694	
288/4			
TOTALE	12.3636	27.5112	5.5713



KATEGORIE 1
AREAS BINNE BESTAANDE 40m PAD RESERWE EN
BINNE NUWE PADRESERWE



KATEGORIE 2
AREAS BUITE BESTAANDE 40m PAD RESERWE EN
BINNE NUWE PADRESERWE



KATEGORIE 3
AREAS BINNE BESTAANDE 40m PAD RESERWE EN
BUITE NUWE PADRESERWE



HANDTEKENING:



DEPARTEMENT PAAR EN VERVOER
OOSKAAP PROVINSIALE REGERING

DPI HANDTEKENING:

MR460: VOORGESTELDE OPGRADERING
VAN PADRESERWE

AREAS

SKAAL

ISIHLOKOMISO**NguMphathiswa wezeNdlala noThutho****No. 4**

ISIHLOKOMISO SOKUPHUCULWA, SOKUVULWA, SOKUPHAMBUKISWA KUNYE NOKUVALWA KWECANDELO LWENDLELA ENKULU YEPHONDO U-460, ENGQURHA, KWISITHILI SASEBHAYI ("MR460") NGOKWEMIQATHANGO YOMTHETHO WEZENDLELA WEMPUMA KOLONI KA-2003 (UMTHETHO NOMB. 3 KA-2003)

1. Ngokwemiqathango yecandelo lesi-5 loMthetho wezeNdlala noThutho eMpuma Koloni ka-2003 (uMthetho nomb.3 ka-2003) ("uMthetho") uMphathiswa wezeNdlala noThutho, kwiPhondo leMpuma Koloni, uhlokomisa ukuba iNdlala eNkulu yePhondo u-460, eNgqurha, kwisithili saseBhayi, enobubanzi obohlukeneyo, ekho kulo mhlaba, njengoko ibonisiwe kwisiCwangciso sesiketshi esikhoyo apha, ukuba iphambukiswa kwaye ivalwe njengoko kuchaziwe. Oku kuquka kwezinye iindawo apho le Ndlala iNkulu yePhondo u-460 isemhlabeni obonisiwe kwisiCwangciso sesiketshi, apho ngaphambili kwaye kungakho Ndlala eNkulu yePhondo eyayikho, kwaye ulungelelwaniso obelukho ngaphambili olukwiNdlala eNkulu yePhondo u-460 luyavalwa apho kanye ithi ingahambelani nolungelelwaniso olukwesi sihlokomiso. Oku kuquka ukuba iNdlala eNkulu yePhondo u-460 eNgqurha, kwisithili saseBhayi, yenziwa banzi kwezinye iindawo.
2. IziCwangciso zesiKetshi kunye namaxwebhu ahambelana noku ayafumaneka nakubani onomdla abafuna ukuzihlola ngexesha lomsebenzi kwiOfisi yesiThili yeNjineli yeNdlala, eStruanway, Struandale, eBhayi. Imibuzo ingabhekiswa apha:

Mnu Marius Keyser okanye Nksk Wilna Snyman
29 Western Road
Umnxeba: (041) 452 2073
I-referensi: EC/MET/460

3. Imibuzo ethe vetshe okanye ulwazi olufanelekileyo lungafunyanwa ngokuthi kubhalwe apha:

The State Attorney
29 Western Road
Central
Port Elizabeth
Umnxeba: 041 585 7921
Ifeksi: 041 585 2687
I-ref: Mnu Johan Coetsee

4. Nabanina onomdla uyacelwa ukuba athethe negqwetha lakhe mayela nesi sihlokomiso.
5. Esi sihlokomiso sizakuqala ukusebenza ngomhla esiyakuthi sipapashwe ngawa kwiGazethi yePhondo.
6. Ngalo mhla wopapasho kwiGazethi yePhondo uMphathiswa wePhondo uyakuwuthabathela kuye lo mhlaba awusebenzisele linjongo zeNdlale zaPhondo ngokwemiqathango yalo Mthetho.
7. UMphathiswa kufuneka ehlawule imbuyekezo yalo mhlaba othe wangenelelwa yile Ndlale, ngenxa yokuvulwa okanye ukuphambukela ngokwemiqathango yecandelo le-12 loMthetho, ofundwa necandelo le-12 nelama-26 oMthetho wokoHluthwa koMhlaba ka-1975 (uMthetho nomb. 63 ka- 1975) kunye necandelo lama-25 loMgaqo-siseko weRhiphabhlikhi yoMzantsi Afrika ka- 1996.
8. Umdla utsalelwa kumagatya ecandelo lesi-8 ukuya kwele-12 kunye nele-14 oMthetho wokoHluthwa koMhlaba ka-1975 (uMthetho nomb. 63 ka-1975).
9. Ukuguqulwa kwesi siHlokomiso kube ngeelwimi ezisemthethweni kungenziwa xa kukho isicelo.

Sesomhla wama 30th kaMatshi 2010 eBhisho

G BARRY
UMPHATHISWA WEZENDLELA NOTHUTHO
EMPUMA KOLONI

ULUNGELELANISO OLUBEKELWE UMGAQO OMTSHA OMALUNGA NEMDA EMASHUMI ASIBHOZO (WG25)								
POINT	Y-COORD	X-COORD	POINT	Y-COORD	X-COORD	POINT	Y-COORD	X-COORD
B1	-63784.35	3735639.25	B37	-60570.74	3737155.22	B71	-60765.80	3736963.11
B2	-63823.20	3735709.18	B38	-60565.00	3737167.89	B72	-60934.70	3736893.52
B3	-63718.31	3735767.48	B39	-60573.79	3737190.16	B73	-61056.94	3736848.73
B4	-63710.54	3735794.68	B39A	-60581.32	3737236.28	B74	-61099.96	3736828.51
B5	-63640.61	3735833.54	B40A	-60558.07	3737245.38	B75	-61109.53	3736801.92
B6	-63613.42	3735825.78	B40	-60536.59	3737204.85	B76	-61096.32	3736773.93
B7	-63491.92	3735893.30	B41	-60527.30	3737181.34	B77	-61183.52	3736759.04
B8	-63393.34	3735944.63	B42	-60514.21	3737175.39	B78	-61145.73	3736784.91
B9	-63292.12	3735990.51	B43	-60490.47	3737183.86	B79	-61172.37	3736794.49
B10	-63188.55	3736030.81	B44	-60289.75	3737251.94	B80	-61319.44	3736725.38
B11	-63090.44	3736065.41	B45	-59986.15	3737371.80	B81	-61389.78	3736703.31
B12	-62377.75	3736275.33	B46	-59873.38	3737416.33	B82	-61574.51	3736645.70
B13	-62298.00	3736302.93	B47	-59691.92	3737487.97	B83	-61652.17	3736618.10
B14	-62220.99	3736337.44	B48	-59662.54	3737413.56	B84	-61727.38	3736583.82
B15	-62147.30	3736378.58	B49	-59664.87	3737394.60	B85	-61799.36	3736543.21
B16	-62074.08	3736422.39	B50	-59658.80	3737390.27	B86	-61867.62	3736496.52
B17	-62012.40	3736479.23	B51	-59622.02	3737389.04	B87	-62019.02	3736363.73
B18	-61933.13	3736547.08	B52	-59474.76	3737445.19	B88	-62100.42	3736301.78
B19	-61841.58	3736611.13	B53	-59431.67	3737433.90	B89	-62180.24	3736257.22
B20	-61763.70	3736655.08	B54	-59439.67	3737394.56	B90	-62268.53	3736228.57
B21	-61661.59	3736700.31	B55	-59472.52	3737403.23	B91	-62354.93	3736198.66
B22	-61450.50	3736767.55	B56	-59615.31	3737348.79	B92	-62360.11	3735988.73
B23	-61385.76	3736790.02	B57	-59672.21	3737350.69	B93	-63161.58	3735955.49
B24	-61325.23	3736821.48	B58	-59709.20	3737377.10	B94	-63261.09	3735916.77
B25	-61210.52	3736875.32	B59	-59744.08	3737381.37	B95	-63358.34	3735872.69
B26	-61200.95	3736901.90	B60	-59844.00	3737341.92	B96	-63453.06	3735823.38
B27	-61217.04	3736935.99	B61	-59934.67	3737306.12	B97	-63574.57	3735755.84
B28	-61177.93	3736946.85	B62	-60260.37	3737177.53	B98	-63582.34	3735728.64
B29	-61164.74	3736918.90	B63	-60467.71	3737087.56	B99	-63652.27	3735689.78
B30	-61138.10	3736909.31	B64	-60478.72	3737061.00	B100	-63679.46	3735697.55
B31	-61092.41	3736930.75	B65	-60449.48	3736906.30			
B32	-60978.70	3736995.17	B66	-60471.83	3736890.16			
B33	-60784.61	3737072.28	B67	-60487.84	3736969.74			
B34	-60697.49	3737106.89	B68	-60517.27	3737044.27			
B35	-60670.69	3737117.54	B69	-60542.96	3737054.92			
B36	-60596.02	3737146.21	B70	-60717.58	3736982.98			

 **NINHAM SHAND**
 INJINILI ZODUCERISA
 PORT ELIZABETH
 ©NINHAM SHAND (Pty) Ltd 2007

UTYKITYO:



ICANDELO LEZENDLELA NEZOTHUTHO
KURHULUMENTE WEPHONDO LWEMPUMA KOLONI

UTYKITYO LWENINILI YESITHILI KWEZODULELA:

ISICELO SOKUPHULISA INDIMA
EBEKIWEYO KUMGAQO U MR480

ULUNGELELANISO OLUBEKELWE ISIKALI
UMGAQO OMTSHA

ULUNGELELANISO OLUBEKELWE UMGAQO OMDALA OMALUNGA NEMIDA EMASHUMI ASIBHOZO (WG25)								
POINT	Y-COORD	X-COORD	POINT	Y-COORD	X-COORD	POINT	Y-COORD	X-COORD
X1	-63820.33	3735992.32	X37	-59439.67	3737394.56	X73	-63354.12	3735973.33
X2	-63435.22	3736006.89	X38	-59530.67	3737418.20	X74	-63433.41	3735966.93
X3	-63358.67	3736013.08	X39	-59577.98	3737422.90	X75	-63798.55	3735953.12
X4	-63261.01	3736027.64	X40	-59706.93	3737446.96			
X5	-63169.55	3736050.50	X41	-59852.84	3737325.84			
X6	-62948.57	3736113.04	X42	-59871.14	3737317.54			
X7	-62398.48	3736298.67	X43	-59919.72	3737295.51			
X8	-62305.32	3736335.84	X44	-59977.44	3737277.94			
X9	-62125.00	3736416.36	X45	-60000.44	3737270.94			
X10	-62082.83	3736440.23	X46	-60062.16	3737252.35			
X11	-62047.00	3736465.63	X47	-60070.00	3737250.12			
X12	-61953.91	3736543.62	X48	-60151.02	3737224.57			
X13	-61891.81	3736581.11	X49	-60222.53	3737199.69			
X14	-61835.93	3736603.47	X50	-60372.91	3737136.77			
X15	-61412.27	3736733.82	X51	-60485.19	3737088.34			
X16	-61361.21	3736751.15	X52	-60449.48	3736906.30			
X17	-61315.65	3736772.23	X53	-60471.83	3736890.16			
X18	-60902.56	3736967.87	X54	-60508.64	3737078.03			
X19	-60851.57	3736988.79	X55	-60632.23	3737023.40			
X20	-60687.77	3737045.62	X56	-60714.76	3736993.83			
X21	-60647.38	3737060.43	X57	-60837.33	3736951.41			
X22	-60516.54	3737118.28	X58	-60885.62	3736931.64			
X23	-60388.73	3737173.51	X59	-61298.22	3736736.22			
X24	-60237.12	3737236.94	X60	-61346.43	3736713.96			
X25	-60163.77	3737262.48	X61	-61400.04	3736695.74			
X26	-60023.00	3737305.86	X62	-61823.22	3736565.53			
X27	-59933.93	3737332.99	X63	-61874.05	3736545.25			
X28	-59872.09	3737361.03	X64	-61928.96	3736512.35			
X29	-59781.70	3737419.62	X65	-62021.23	3736435.01			
X30	-59686.81	3737475.03	X66	-62061.56	3736406.36			
X31	-59646.50	3737498.57	X67	-62107.08	3736380.59			
X32	-59631.99	3737460.46	X68	-62289.65	3736299.03			
X33	-59578.23	3737462.93	X69	-62384.55	3736261.18			
X34	-59542.98	3737461.48	X70	-62937.63	3736074.56			
X35	-59510.99	3737454.54	X71	-63158.82	3736011.97			
X36	-59431.67	3737433.90	X72	-63253.13	3735988.42			



NINHAM SHAND
AN INDEPENDENT
PROPERTY DEVELOPERS
PORT ELIZABETH
©NINHAM SHAND (Pty) Ltd 2007

UTYAKITO:



**ICANDELO LEZENDELA NEZOTHUTHO
KURHULUMENTE WEPHONDO LWEMPUMA KOLONI**

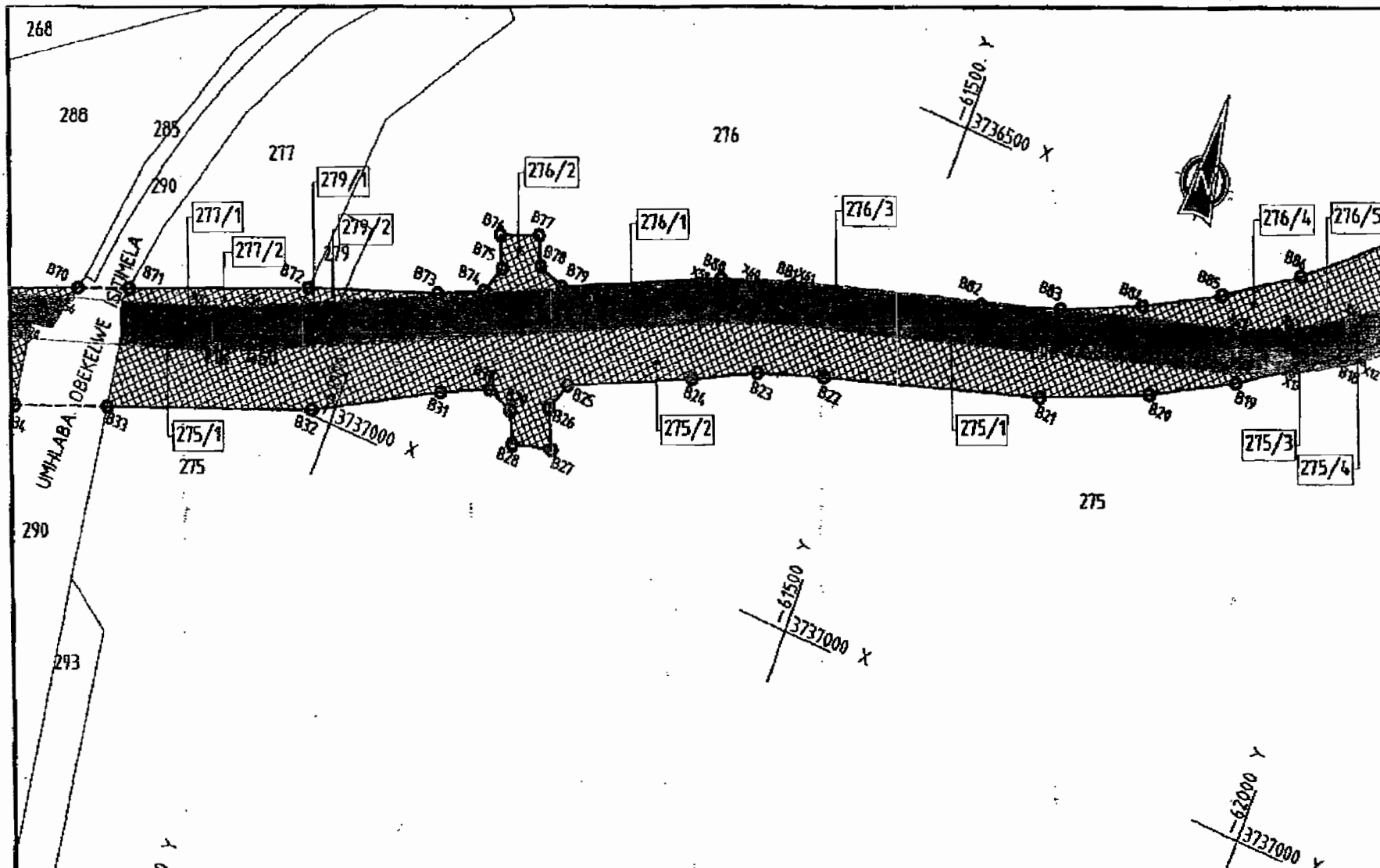
UTYAKITO: LWEMUNU YESITHI KWEZENDELA:

**ISICELO SOKUPHULISA INDIMA
EBEKWEYO KUMGAQO U MR460**

**ULUNGELELANISOOLUBEKELWE
UMGAQO OMDALA**

ISIKALI



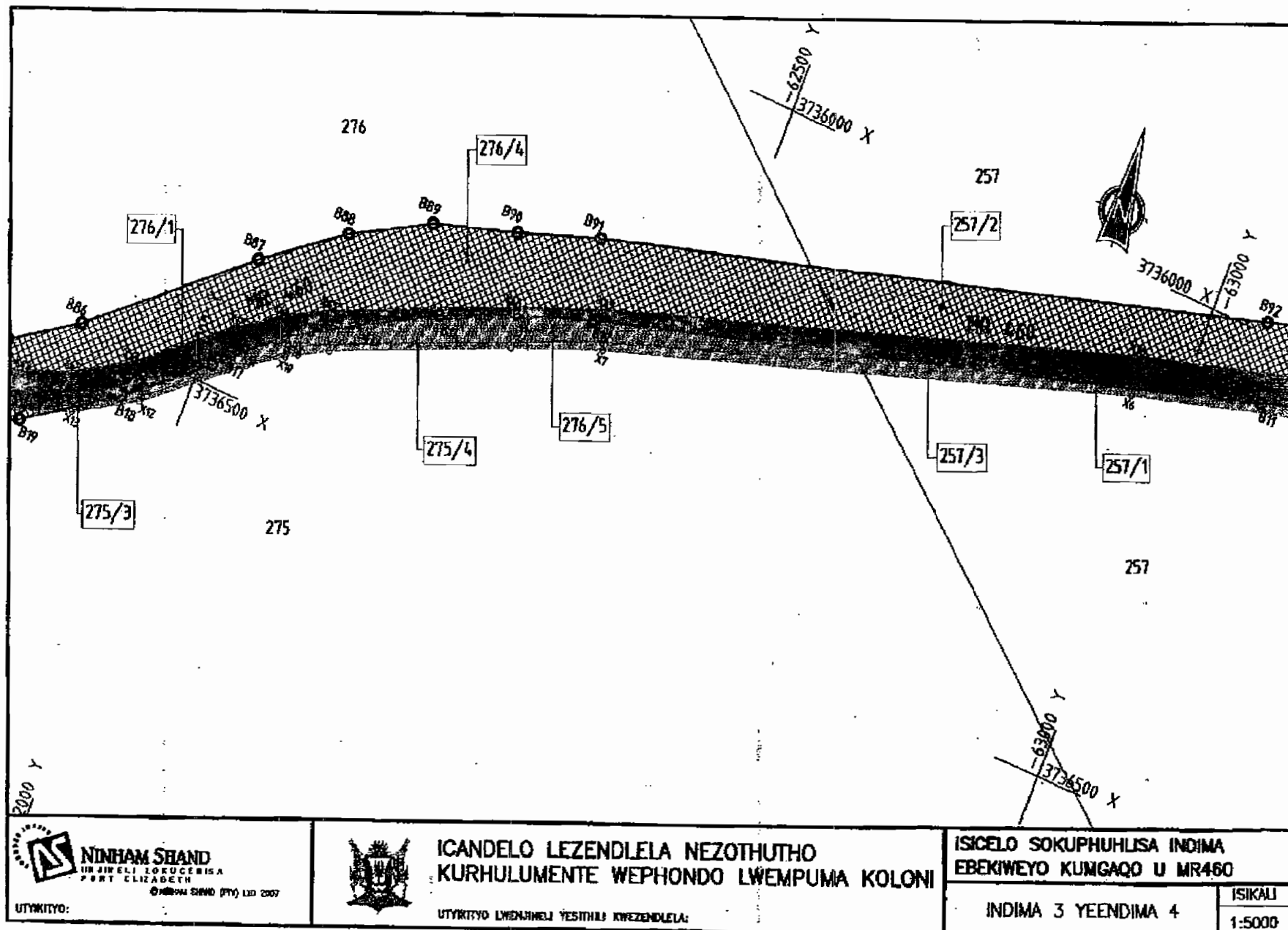


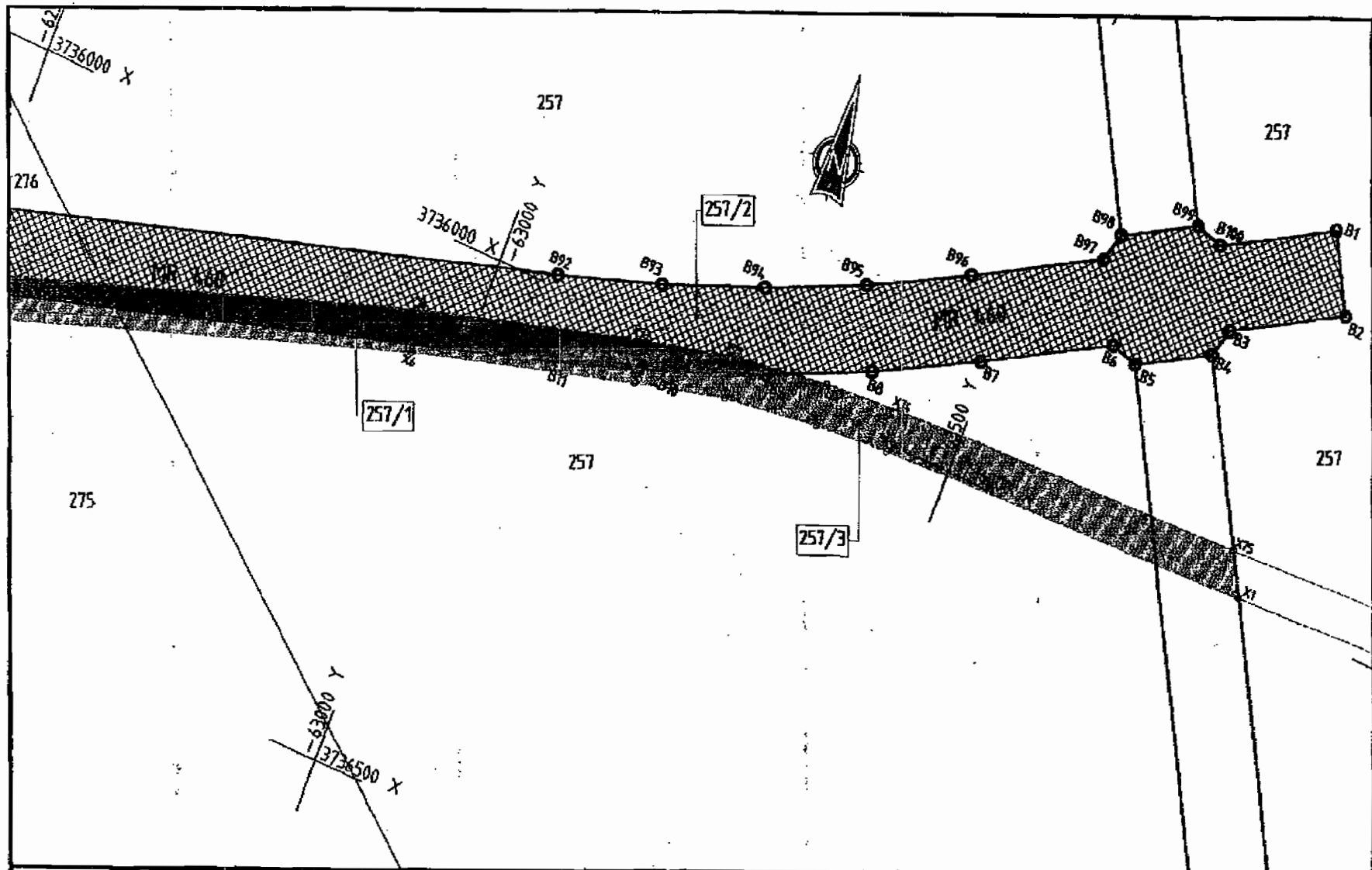
NINHAM SHAND
 INJINIYALI ZOKUCOBISA
 PORT ELIZABETH
 NINHAM SHAND (PTY) LTD 2007
 UTYIKITYO:



**ICANDELO LEZENDELELA NEZOTHUTHO
 KURHULUMENTE WEPHONDO LWEMPUMA KOLONI**
 UTYIKITYO LWENJINIYALI YESITHULI KWENZENDLELA:

**ISICELO SOKUPHULISA INDIMA
 EBENKIWEYO KUMGAQO U MR460**
 INDIMA 2 YEENDIMA 4
 ISIKALI
 1:5000






NINHAM SHAND
 INJINIYI ZOKUBONISA
 PORT ELIZABETH
 (NINHAM SHAND PTY) LTD 2007
 UYIKHITYO:



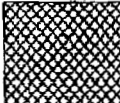
**ICANDELO LEZENDELELA NEZOTHUTHO
 KURHULUMENTE WEPHONDO LWEMPUMA KOLONI**
 UYIKHITYO LWENJINIYI YESITHALI KWIZENDLELA:

**ISICELO SOKUPHULISA INDIMA
 EBENKWEYO KUMGAQO U MR460**
 INDIMA 4 YEENDIMA 4
 ISIKALI
 1:5000

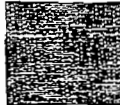
INDIMA KUMANXIWA ACAPHAZELEKAYO (Ha)			
INDIMA No	ULUHLU 1	ULUHLU 2	ULUHLU 3
217/1		0.0175	
224/1	0.2967	1.0355	
224/2			0.3640
224/3			
224/4	0.4823	0.2408	
224/5			
257/1	1.8194	8.8949	
257/2			2.9195
257/3			
268/1	0.6997		
268/2			0.1149
268/3			0.0029
275/1	0.6465	5.4166	
275/2			0.0102
275/3			0.5513
275/4			
276/1	4.7811	0.3296	
276/2			0.1065
276/3		5.9151	
276/4			1.3665
276/5			
277/1	0.6218	0.2789	
277/2			
279/1	0.1491	0.0447	
279/2			
287/1			0.1555
287/2	0.0061		
288/1	3.5074	4.7907	
288/2		0.2745	
288/3		0.2694	
288/4			
IZIPHUMO	12.3636	27.5112	5.5713



ULUHLU 1
YINDAWO EPHEKATHI KU 40m YOMGAQO OMDALA NOMTSHA



ULUHLU 2
YINDAWO EPHEKATHI KU 40m YOMGAQO OMDALA KUNYE NEPHAKATHI KUMGAQO OMTSHA



ULUHLU 3
YINDAWO EPHEKATHI KU 40m YOMGAQO OMDALA KUNYE NONGAPHANDLE KUMGAQO OMTSHA



NINHAM SHAND
ENGINEERS & ARCHITECTS
PORT ELIZABETH
021 204 2000 (Pty) Ltd 2007



**ICANDELO LEZENDLELA NEZOTHUTHO
KURHULUMENTE WEPHONDO LWEMPUMA KOLONI**
UTYAKITYO LWENAMALI YESITHILI KWEZENDLELA

**ISICELO SOKUPHULISA INDIMA
EBEKIWEYO KUMGAQO U MR460**

INDIMA

ISIKALI