



PROVINCE OF THE EASTERN CAPE
IPHONDO LEMPUMA KOLONI
PROVINSIE OOS-KAAP

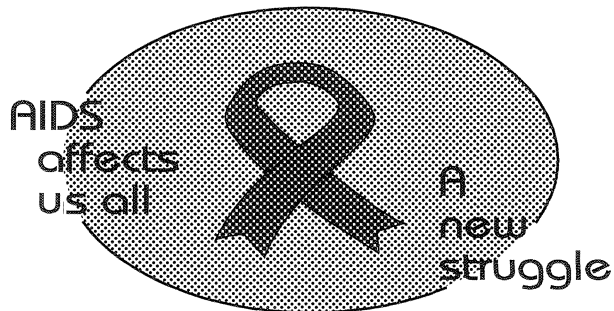
Provincial Gazette Igazethi Yephondo Provinsiale Koerant

Vol. 22

BISHO/
KING WILLIAM'S TOWN, 8 JULY 2015

No. 3422
(Extraordinary)

We all have the power to prevent AIDS



**AIDS
HELPLINE**

0800 012 322

DEPARTMENT OF HEALTH

Prevention is the cure

N.B. The Government Printing Works will not be held responsible for the quality of "Hard Copies" or "Electronic Files" submitted for publication purposes



DISCLAIMER:

Government Printing Works reserves the right to apply the 25% discount to all Legal and Liquor notices that comply with the business rules for notice submissions for publication in gazettes.

National, Provincial, Road Carrier Permits and Tender notices will pay the price as published in the Government Gazettes.

For any information, please contact the eGazette Contact Centre on 012-748 6200 or email info.egazette@gpw.gov.za

CONTENTS • INHOUD

<i>No.</i>		<i>Page No.</i>	<i>Gazette No.</i>
GENERAL NOTICE • ALGEMENE KENNISGEWING			
142	Local Government: Municipal Demarcation Act (27/1998): Determination or re-determination of municipal boundaries	3	3422
142	Wet op Plaaslike Regering: Munisipale Afbakening (27/1998): Bepaling of herbepaling van munisipale grense	6	3422

GENERAL NOTICE ALGEMENE KENNISGEWING

No. 142

**MUNICIPAL DEMARCATION BOARD
DETERMINATION OR RE-DETERMINATION OF MUNICIPAL BOUNDARIES
NOTICE IN TERMS OF SECTION 21 OF THE LOCAL GOVERNMENT:
MUNICIPAL DEMARCATION ACT, 1998
(Eastern Cape)**

In terms Section 21 of the Local Government: Municipal Demarcation Act, 1998 (Act No. 27 of 1998) the Municipal Demarcation Board (MDB) has determined or re-determined the municipal boundaries of the municipalities referred to in the Schedule.

Any person aggrieved by a determination or re-determination may submit objections in writing to:

The Municipal Demarcation Board
Private Bag X 123,
CENTURION 0046
Fax: 086 524 8643
E-mail: fazel@demarcation.org.za

Objections must reach the office of the MDB within 30 days of publication of this notice, and must, if possible, be based on the criteria provided for in section 24 and 25 of the Demarcation Act, 1998.

The reference number (**DEM number**) appearing in the first column of the Schedule must be quoted in any correspondence with the Board.

A copy of this notice, MDB Circular 8/2015, and maps can be downloaded from the MDB website www.demarcation.org.za or can be requested by sending an email to daniel@demarcation.org.za

In the case of a discrepancy between the Schedule and the maps, the maps shall prevail, and in the event of any inconsistency between the English version and any other translation of this notice, the English version shall prevail.

**JANE THUPANA
CHAIRPERSON: MUNICIPAL DEMARCATION BOARD**

SCHEDULE

Reference number	Affected municipalities	Section 21 determination or re-determination
DEM4502	Gariep Local Municipality (EC144) and Maletswai Local Municipality (EC143)	<p>In terms of section 21 of the Local Government: Municipal Demarcation Act, 1998, the MDB has:</p> <ul style="list-style-type: none"> • re-determined the municipal boundaries of Gariep Local Municipality (EC144) and Maletswai Local Municipality (EC143) by amalgamating their municipal areas; and • determined the municipal boundaries of the new category B municipal area as reflected by the attached map.
DEM4503	Nxuba Local Municipality (EC128) and Nkonkobe Local Municipality (EC127)	<p>In terms of section 21 of the Local Government: Municipal Demarcation Act, 1998, the MDB has:</p> <ul style="list-style-type: none"> • re-determined the municipal boundaries of Nxuba Local Municipality (EC128) and Nkonkobe Local Municipality (EC127) by amalgamating their municipal areas; and • determined the municipal boundaries of the new category B municipal area as reflected by the attached map.
DEM4505	Inkwanca Local Municipality (EC133), Tsolwana Local Municipality (EC132), Lukhanji Local Municipality (EC134), and Inxuba Yethemba (EC131)	<p>In terms of section 21 of the Local Government: Municipal Demarcation Act, 1998, the MDB has:</p> <ul style="list-style-type: none"> • re-determined the municipal boundaries of Inkwanca Local Municipality (EC133), Tsolwana Local Municipality (EC132), Lukhanji Local Municipality (EC134), and Inxuba Yethemba (EC131) by: <ul style="list-style-type: none"> ○ excluding a portion of the municipal area of Tsolwana from Tsolwana and by including it into the municipal area of Inxuba Yethemba as reflected on the attached map; and ○ by amalgamating the remaining portion of the municipal area of Tsolwana with the municipal areas of Inkwanca and Lukhanji.

		<ul style="list-style-type: none">• Determined the municipal boundaries of the new category B municipal area as reflected by the attached map.
--	--	--

No. 142

**MUNISIPALE AFBAKENINGSRAAD
KENNISGEWING INGEVOLGE ARTIKEL 21 VAN DIE WET OP PLAASLIKE
REGERING: MUNISIPALE AFBAKENING, 1998
(Oos-Kaap)**

Die Munisipale Afbakeningsraad het ingevolge artikel 21 van die Wet op Plaaslike Regering: Munisipale Afbakening, 1998 (Wet No. 27 van 1998), die munisipale grense van die munisipaliteite waarna in die Bylae verwys word, bepaal of herbepaal.

Enige persoon wat gegrief is deur 'n bepaling of herbepaling mag skriftelike besware stuur aan:

Die Munisipale Afbakeningsraad
Privaatsak X 123,
CENTURION 0046
Faks: 086 524 8643
E-pos: fazel@demarcation.org.za

Skriftelike besware moet die Raad bereik binne 30 dae vanaf die datum van publikasie van hierdie kennisgewing, en, waar moontlik, moet die besware gebaseer wees op die kriteria waarvoor in Artikels 24 en 25 van die Afbakeningswet, 1998, voorsiening gemaak word.

Die verwysingsnommer (**DEM nommer**) wat in die eerste kolom van die Bylae verskyn, moet verstrek word in enige korrespondensie met die Raad.

'n Afskrif van hierdie kennisgewing, die Raad se Omsendskrywe 8/2015, en kaarte kan afgelaai word van die Raad se webwerf www.demarcation.org.za of kan aangevra word deur 'n e-pos te stuur aan daniel@demarcation.org.za

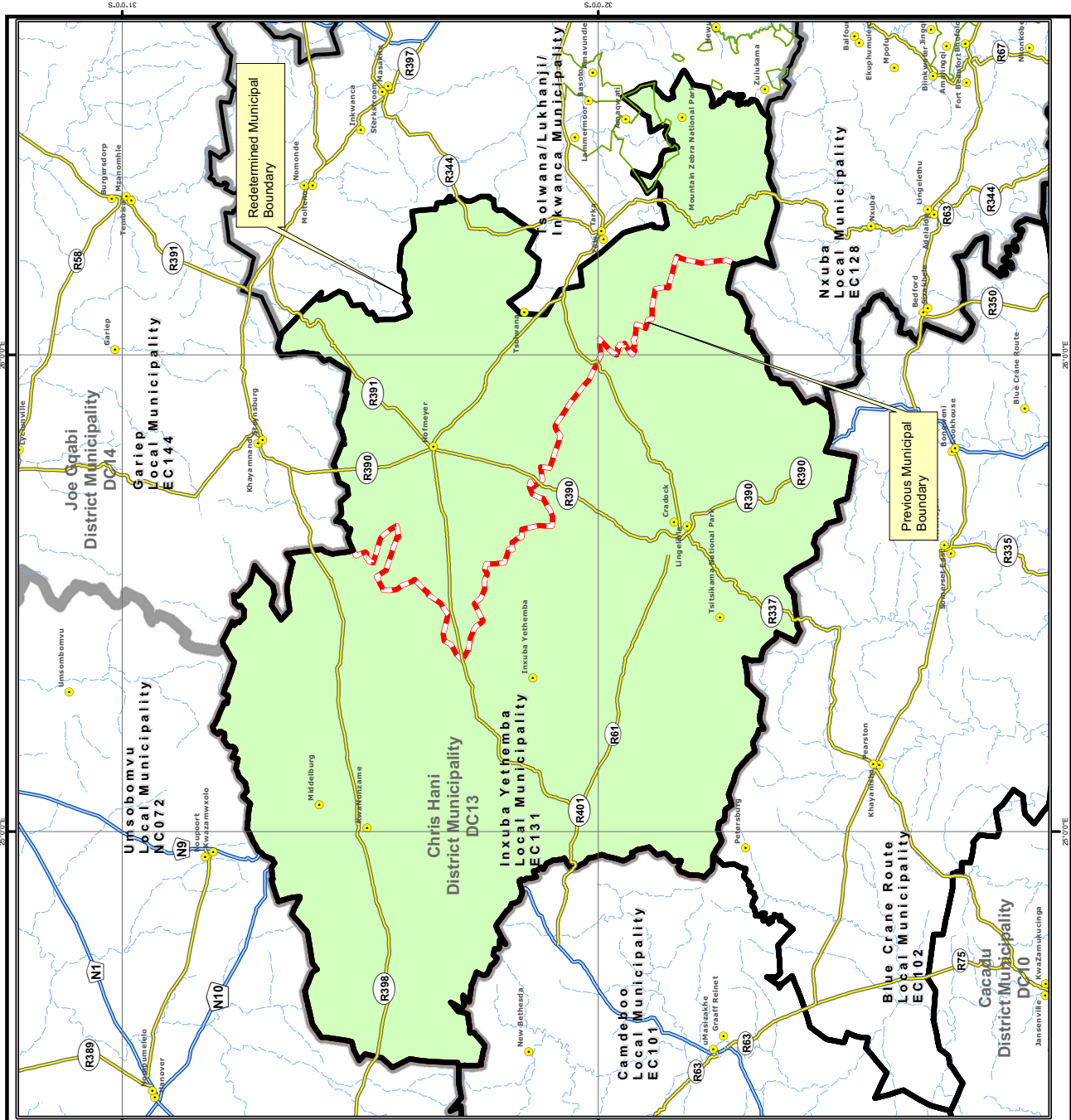
Indien daar 'n verskil is tussen die Bylae en die kaarte, sal die kaarte geld, en sou enige vertaling van hierdie kennisgewing verskil van die Engelse weergawe, sal laasgenoemde geld.

JANE THUPANA
VOORSITSTER: MUNISIPALE AFBAKENINGSRAAD

BYLAE

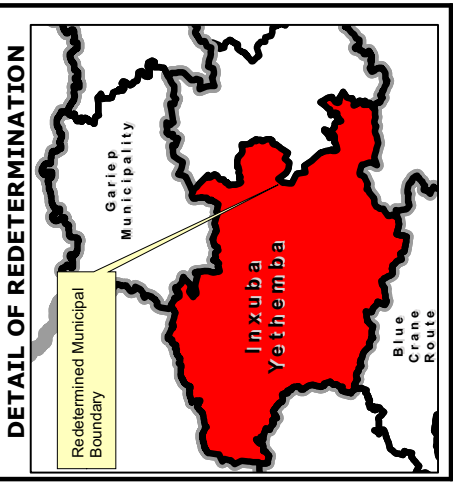
Verwysings nommer	Geaffekteerde munisipaliteite	Artikel 21 bepaling of herbepaling
DEM4502	Gariep Plaaslike Munisipaliteit (EC144) en Maletswai Plaaslike Munisipaliteit (EC143)	Ingevolge artikel 21 van die Wet op Plaaslike Regering, 1998, het die Munisipale Afbakeningsraad: <ul style="list-style-type: none"> • die munisipale grense van Gariep Plaaslike Munisipaliteit (EC144) en Maletswai Plaaslike Munisipaliteit (EC143) herbepaal deur hul munisipale gebiede te amalgameer; en • die munisipale grense van die nuwe Kategorie B munisipale gebied, bepaal, soos aangedui op die bygaande kaart.
DEM4503	Nxuba Plaaslike Munisipaliteit (EC128) en Nkonkobe Plaaslike Munisipaliteit (EC127)	Ingevolge artikel 21 van die Wet op Plaaslike Regering, 1998, het die Munisipale Afbakeningsraad: <ul style="list-style-type: none"> • die munisipale grense van Nxuba Plaaslike Munisipaliteit (EC128) en Nkonkobe Plaaslike Munisipaliteit (EC127) herbepaal deur hul munisipale gebiede te amalgameer; en • die munisipale grense van die nuwe Kategorie B munisipale gebied, bepaal, soos aangedui op die bygaande kaart.
DEM4505	Inkwanca Plaaslike Munisipaliteit (EC133), Tsolwana Plaaslike Munisipaliteit (EC132), Lukhanji Plaaslike Munisipaliteit (EC134), en Inxuba Yethemba Plaaslike Munisipaliteit (EC131)	Ingevolge artikel 21 van die Wet op Plaaslike Regering, 1998, het die Munisipale Afbakeningsraad: <ul style="list-style-type: none"> • die munisipale grense van Inkwanca Plaaslike Munisipaliteit (EC133), Tsolwana Plaaslike Munisipaliteit (EC132), Lukhanji Plaaslike Munisipaliteit (EC134), en Inxuba Yethemba Plaaslike Munisipaliteit (EC131) herbepaal deur: <ul style="list-style-type: none"> ○ 'n gedeelte van die munisipale gebied van Tsolwana uit te sluit van Tsolwana, en dit in te sluit in die munisipale gebied van Inxuba Yethemba; ○ Die oorblywende gedeelte van die munisipale gebied van Tsolwana, te amalgameer met die

		<p>munisipale gebiede van Inkwanca en Lukhanji.</p> <ul style="list-style-type: none">• die munisipale grense van die nuwe Kategorie B munisipale gebied, bepaal, soos aangedui op die bygaande kaart.
--	--	--



MAP NUMBER
DEM4505_1

DATE
June 2015



In terms of section 21 of the Local Government: Municipal Demarcation Act, 1998, the MDB has re-determined the municipal boundaries of Inkwana Local Municipality (EC133), Tsohwana Local Municipality (EC132), Likhwanja Local Municipality (EC134), and Inxuba Yethemba (EC131) by excluding a portion of the municipal area of Tsohwana from Tsohwana and by including it into the municipal area of Inxuba Yethemba as reflected on this map; and by amalgamating the remaining portion of the municipal area of Tsohwana with the municipal areas of Inkwana and Likhwanja. Determined the municipal boundaries of the new category B municipal area as reflected on this map.

Additional info relating to this map can be obtained from: the Municipal Demarcation Board:

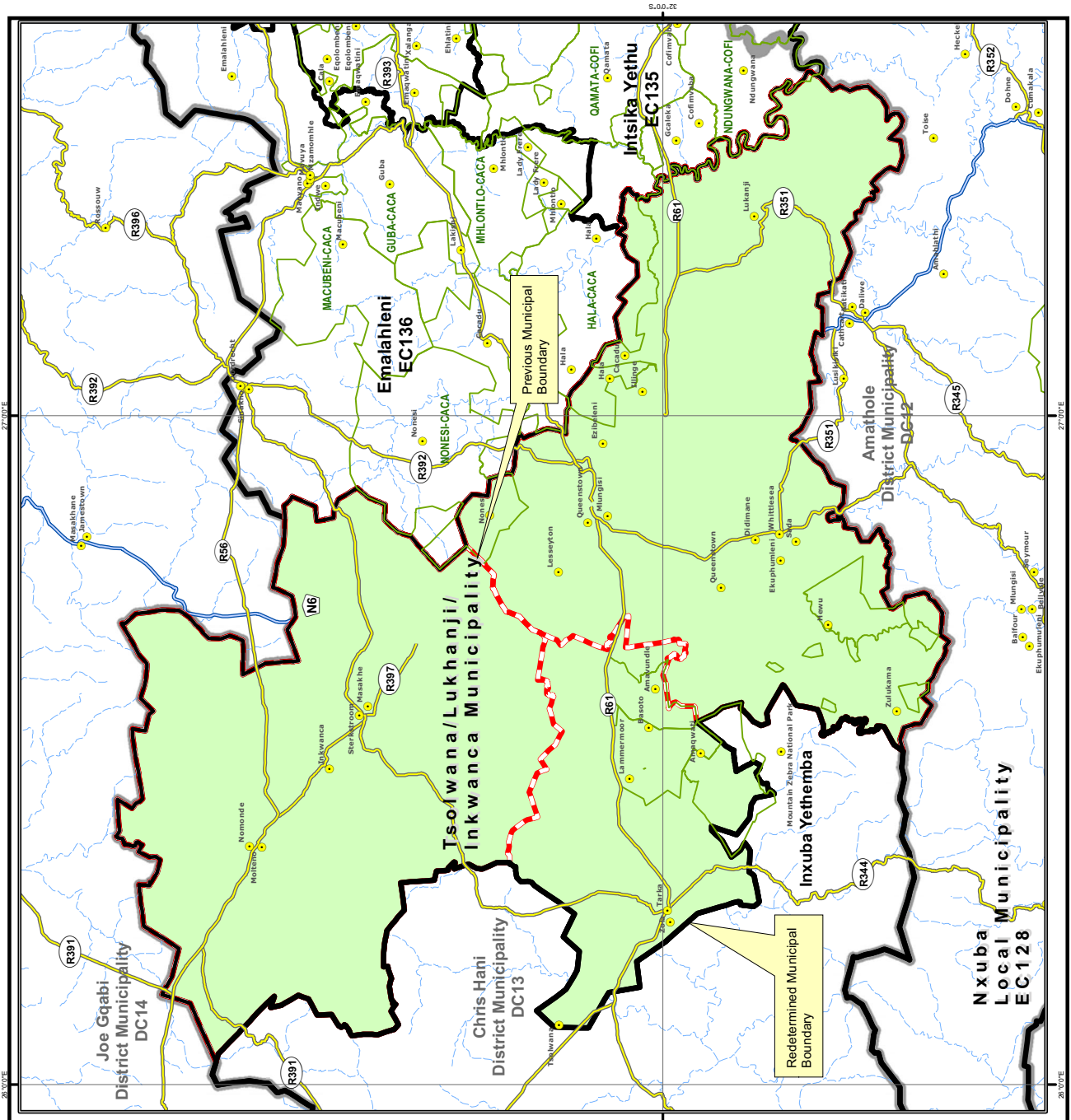
Tel: (012) 342 2481
Fax: (012) 342 2480

E-mail: info@demarcation.org.za
Internet download: www.demarcation.org.za

Legend

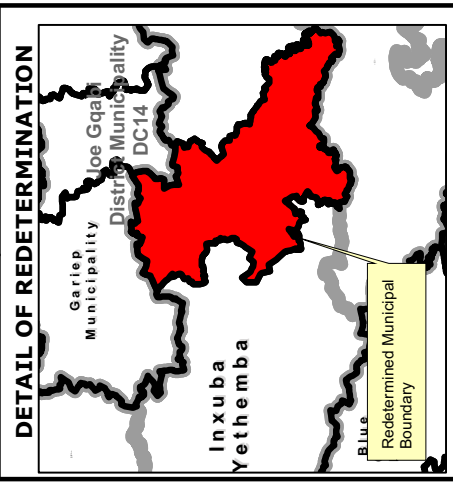
- Main Place
- DEM
- Local/Metro Municipalities
- District Municipalities
- Wards
- Sub Place
- National Roads
- Main Roads
- Secondary Roads
- Rivers

0 5 10 20
Kilometers



MAP NUMBER
DEM4505_2

DATE
June 2015



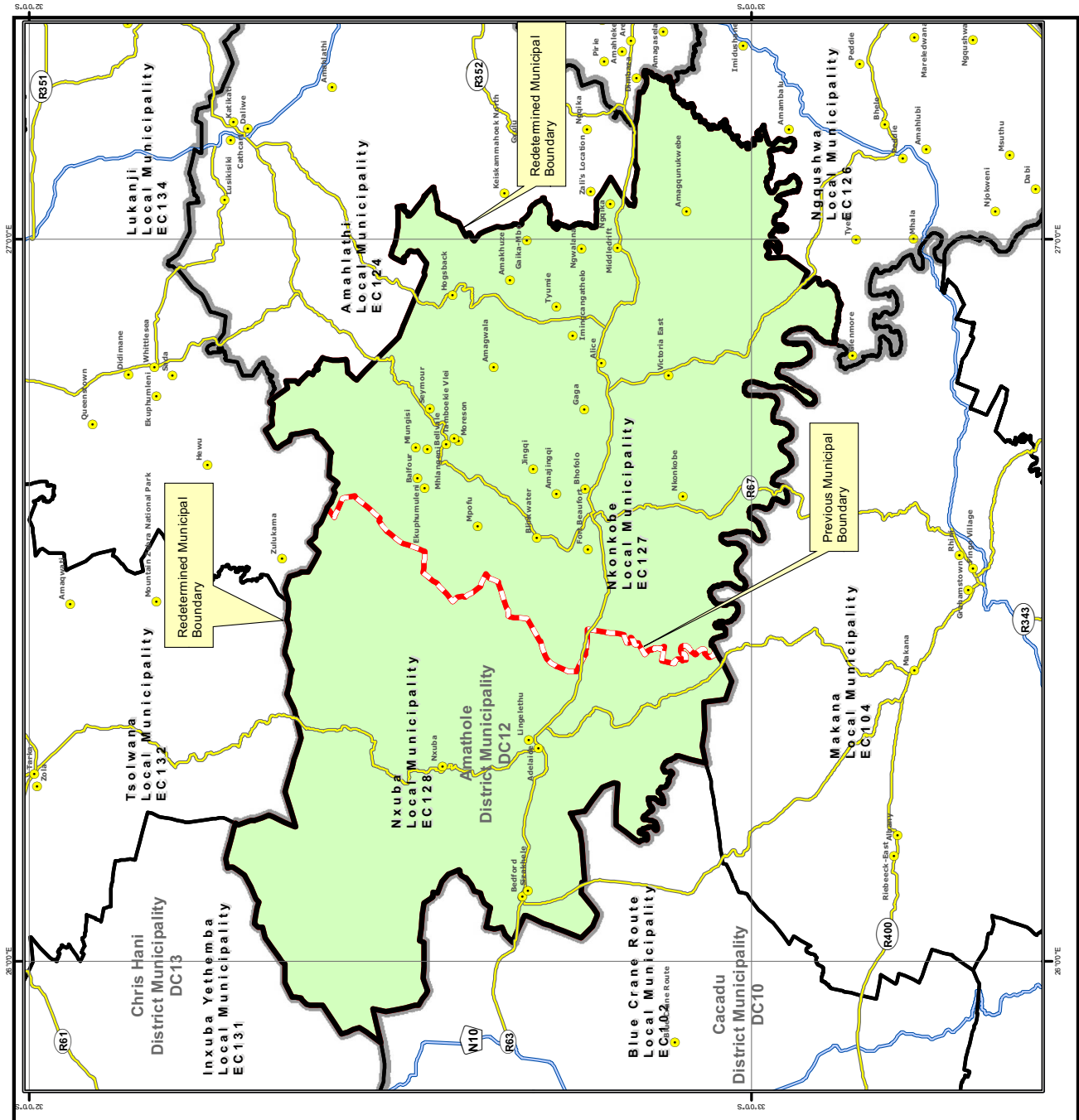
In terms of section 21 of the Local Government: Municipal Demarcation Act, 1998, the MDB has re-determined the municipal boundaries of Inkwanca Local Municipality (EC133), Tsoelwana Local Municipality (EC132), Lukhanji Local Municipality (EC134), and Inxuba Yethemba (EC131) by excluding a portion of the municipal area of Tsoelwana from Tsoelwana and by including it into the municipal area of Inxuba Yethemba as reflected on this map; and by amalgamating the remaining portion of the municipal area of Tsoelwana with the municipal areas of Inkwanca and Lukhanji. Determined the municipal boundaries of the new category B municipal area as reflected on this map.

Legend

- Main Place
- DEM
- Local/Metro Municipalities
- District Municipalities
- Wards
- Sub Place
- National Roads
- Main Roads
- Secondary Roads
- Rivers

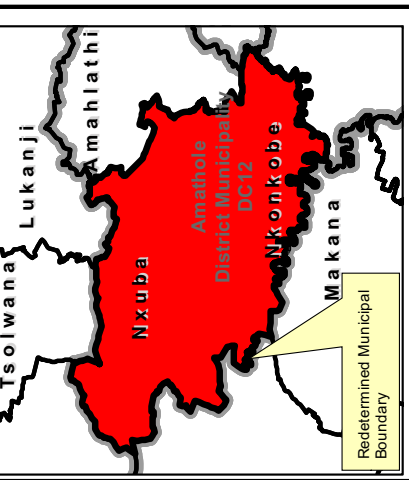
Additional info relating to this map can be obtained from the Municipal Demarcation Board:
Tel: (012) 342 2481
Fax: (012) 342 2480
E-mail: info@demarcation.org.za
Internet download: www.demarcation.org.za





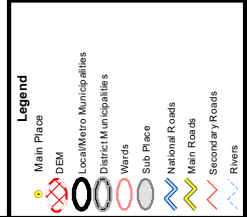
MAP NUMBER
DEM4503

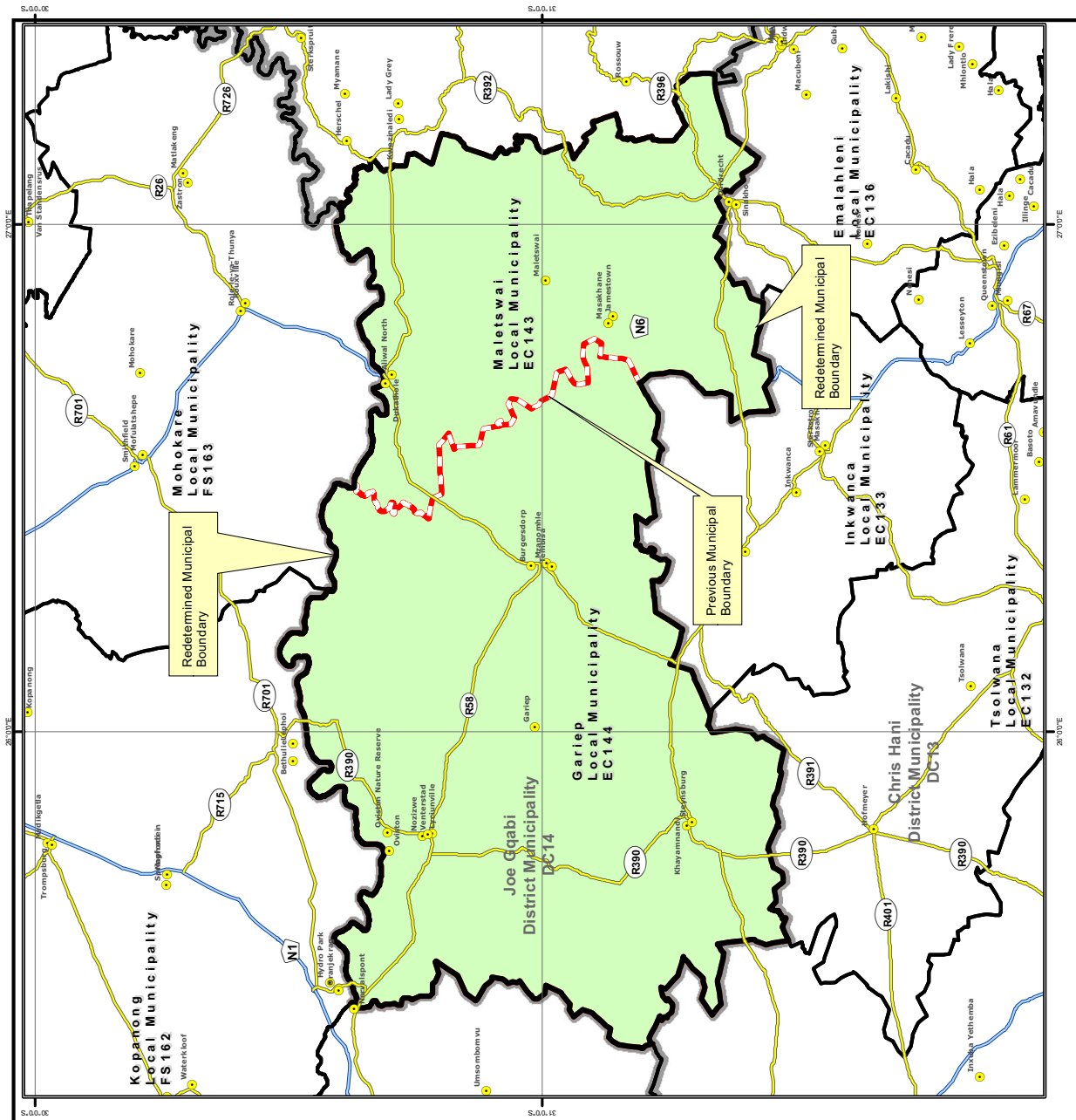
DATE
June 2015


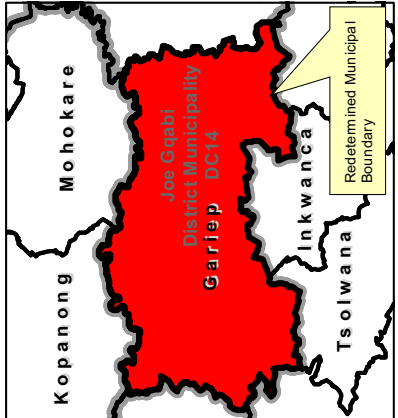


In terms of Section 21 of the Local Government: Municipal Demarcation Act 27 of 1998 the Municipal Demarcation Board has re-determined the municipal boundaries of Nxuba Local Municipality (EC128) and Nkonkobe Local Municipality (EC127) by amalgamating their municipal areas

Additional info relating to this map can be obtained from the Municipal Demarcation Board:
Tel: (012) 342 2481
Fax: (012) 342 2480
E-mail: info@demarcation.org.za
Internet download: www.demarcation.org.za





	MAP NUMBER DEM4502	DATE June 2015
	DETAIL OF REDETERMINATION	
		
<p>In terms of Section 21 of the Local Government: Municipal Demarcation Act 27 of 1998 re-determined the municipal boundaries of Gariep Local Municipality (EC144) and Maletswai Local Municipality (EC143) by amalgamating their municipal areas</p>		
<p>Additional info relating to this map can be obtained from the Municipal Demarcation Board: Tel: (012) 342 2481 Fax: (012) 342 2480 E-mail: info@demarcation.org.za Internet download: www.demarcation.org.za</p>		