



PROVINCE OF THE EASTERN CAPE
IPHONDO LEMPUMA KOLONI
PROVINSIE OOS-KAAP

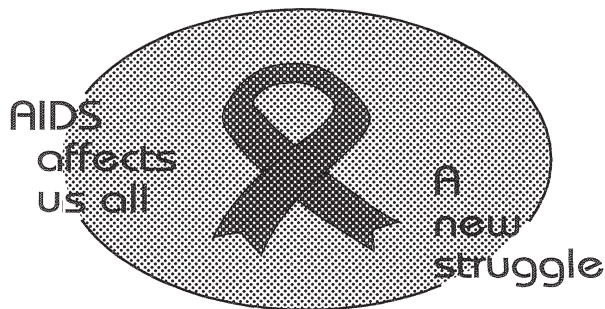
**Provincial Gazette
Igazethi Yephondo
Provinsiale Koerant
(Extraordinary)**

Vol. 22

BISHO/
KING WILLIAM'S TOWN, 22 JULY 2015

No. 3426

We all have the power to prevent AIDS



**AIDS
HELPLINE**

0800 012 322

DEPARTMENT OF HEALTH

Prevention is the cure

N.B. The Government Printing Works will not be held responsible for the quality of "Hard Copies" or "Electronic Files" submitted for publication purposes

ISSN 1682-4556



9 771682 455006

03426



IMPORTANT

Information

from Government Printing Works

Dear Valued Customers,

Government Printing Works has implemented rules for completing and submitting the electronic Adobe Forms when you, the customer, submits your notice request.

Please take note of these guidelines when completing your form.



GPW Business Rules

1. No hand written notices will be accepted for processing, this includes Adobe forms which have been completed by hand.
2. Notices can only be submitted in Adobe electronic form format to the email submission address submit.egazette@gpw.gov.za. This means that any notice submissions not on an Adobe electronic form that are submitted to this mailbox will be **rejected**. National or Provincial gazette notices, where the Z95 or Z95Prov must be an Adobe form but the notice content (body) will be an attachment.
3. Notices brought into GPW by "walk-in" customers on electronic media can only be submitted in Adobe electronic form format. This means that any notice submissions not on an Adobe electronic form that are submitted by the customer on electronic media will be **rejected**. National or Provincial gazette notices, where the Z95 or Z95Prov must be an Adobe form but the notice content (body) will be an attachment.
4. All customers who walk in to GPW that wish to submit a notice that is not on an electronic Adobe form will be routed to the Contact Centre where the customer will be taken through the completion of the form by a GPW representative. Where a customer walks into GPW with a stack of hard copy notices delivered by a messenger on behalf of a newspaper the messenger must be referred back to the sender as the submission does not adhere to the submission rules.
5. All notice submissions that do not comply with point 2 will be charged full price for the notice submission.
6. The current cut-off of all Gazette's remains unchanged for all channels. (Refer to the GPW website for submission deadlines – www.gpwonline.co.za)
7. Incorrectly completed forms and notices submitted in the wrong format will be rejected to the customer to be corrected and resubmitted. Assistance will be available through the Contact Centre should help be required when completing the forms. (012-748 6200 or email info.egazette@gpw.gov.za)
8. All re-submissions by customers will be subject to the above cut-off times.
9. All submissions and re-submissions that miss the cut-off will be rejected to the customer to be submitted with a new publication date.
10. Information on forms will be taken as the primary source of the notice to be published. Any instructions that are on the email body or covering letter that contradicts the notice form content will be ignored.

You are therefore advised that effective from **Monday, 18 May 2015** should you not comply with our new rules of engagement, all notice requests will be rejected by our new system.

Furthermore, the fax number **012- 748 6030** will also be **discontinued** from this date and customers will only be able to submit notice requests through the email address submit.egazette@gpw.gov.za.

DISCLAIMER:

Government Printing Works reserves the right to apply the 25% discount to all Legal and Liquor notices that comply with the business rules for notice submissions for publication in gazettes.

National, Provincial, Road Carrier Permits and Tender notices will pay the price as published in the Government Gazettes.

For any information, please contact the eGazette Contact Centre on 012-748 6200 or email info.egazette@gpw.gov.za

Table of Contents

<i>No.</i>		<i>Gazette No.</i>	<i>Page No.</i>
PROVINCIAL NOTICES • PROVINSIALE KENNISGEWINGS			
43	Local Government: Municipal Structures Act (117/1998): Municipal Demarcation Board: Delimitation of municipal wards: Elundini Local Municipality (EC141)	3426	4
43	Wet Op Plaaslike Regering: Munisipale Strukture (117/1998): Munisipale Afbakeningsraad: Afbakening van munisipale wyke: Elundini Local Municipality (EC141).....	3426	5

PROVINCIAL NOTICES • PROVINSIALE KENNISGEWINGS

PROVINCIAL NOTICE 43 OF 2015**MUNICIPAL DEMARCATION BOARD : DELIMITATION OF
MUNICIPAL WARDS IN TERMS OF THE LOCAL
GOVERNMENT : MUNICIPAL STRUCTURES ACT, 1998.****Elundini Local Municipality
EC141**

In terms of Item 5 (1) of Schedule 1 to the Local Government: Municipal Structures Act, 1998 (Act No. 117 of 1998) (the Act) the Municipal Demarcation Board hereby publishes its delimitation of wards for the above-mentioned municipality. Particulars of the delimitation are listed in the Schedule.

In terms of Item 5 (2) of Schedule 1 to the Act, any person aggrieved by the delimitation may, within 14 days of publication of this notice, submit objections in writing to:

The Municipal Demarcation Board
Private Bag X123
Centurion
0046

Fax: 086 5248643
Email: wards@demarcation.org.za

The attached form MDB 5 must please be used to object. The form is also available on www.demarcation.org.za

**MS JANE THUPANA
CHAIRPERSON: MUNICIPAL DEMARCATION BOARD****SCHEDULE**

In terms of section 18(3) of the Local Government: Municipal Structures Act, 1998 (Act 117 of 1998), the MEC responsible for local government has determined that the municipal council consists of 34 councillors.

After having consulted the Independent Electoral Commission, The Municipal Demarcation Board has delimited the municipality into 17 wards in terms of Schedule 1 of the Act.

The number of registered voters in each ward does not vary by more than fifteen percent from the norm. The norm was determined by dividing the total number of voters on the municipal segment of the national common voters roll, namely 61406 voters on 5 March 2014, by the number of wards in the municipality.

An overview map of the boundary of the municipality, with the boundaries of the wards within the municipality, and a map of each ward are attached. In case of a discrepancy between the map and this schedule, the map will prevail. The ward numbers, the voting districts and voting stations in each ward, and the number of voters are as follows:

PROVINSIALE KENNISGEWING 43 VAN 2015**MUNISIPALE AFBAKENINGSRAAD :
AFBAKENING VAN MUNISIPALE WYKE INGEVOLGE DIE WET OP
PLAASLIKE REGERING: MUNISIPALE STRUKTURE, 1998****Elundini Local Municipality****EC141**

Ingevolge Item 5(1) van Bylae 1 van die Wet op Plaaslike Regering: Munisipale Strukture, 1998 (Wet No. 117 van 1998) (die Wet) publiseer die Munisipale Afbakeningsraad hiermee sy afbakening van wyke vir die bogenoemde munisipaliteit. Besonderhede van die afbakening is vervat in die Bylae.

Ingevolge item 5(2) van Bylae 1 van die Wet, kan enige persoon wat gegrief is deur 'n afbakening binne 14 dae vanaf publikasie van hierdie kennisgewing skriftelike besware voorlê aan:

Die Munisipale Afbakeningsraad
Privaatsak X123
Centurion
0046

Faks: 086 5248643
E-pos: wards@demarcation.org.za

Die aangehegte vorm MDB5 moet asseblief gebruik word om beswaar aan te teken. Die vorm is ook beskikbaar op www.demarcation.org.za

**MS JANE THUPANA
VOORSITTER : MUNISIPALE AFBAKENINGSRAAD****BYLAE**

Ingevolge artikel 18(3) van die Wet op Plaaslike Regering: Munisipale Strukture, 1998 (Wet 117 van 1998) het die LUR vir plaaslike regering bepaal dat die munisipale raad bestaan uit 34 raadslede.

Na oorlegpleging met die Onafhanklike Verkiesingskommissie het die Munisipale Afbakeningsraad die munisipaliteit in 17 wyke afgebaken ingevolge Bylae 1 van die Wet.

Die getal geregistreerde kiesers in elke wyk, wyk nie meer as vyftien persent van die norm af nie. Die norm is bepaal deur die getal geregistreerde kiesers op die munisipale segment van die nasionale gemeenskaplike kieserslys, naamlik 61406 kiesers op 5 Maart 2014, deur die getal wyke in die munisipaliteit te deel.

'n Oorsigkaart van die munisipale grens met die grense van die wyke binne die munisipale grens, en 'n kaart van elke wyk, is aangeheg. Ingeval van 'n verskil tussen 'n kaart en hierdie bylae, sal die kaart geld.

Die wyknommers, die stembedstrikte en stemlokale in elke wyk, en die getal kiesers is as volg:

Ward 1 comprises of a total of 3594 registered voters.
Wyk 1 bestaan uit 'n totaal van 3594 geregisteerde kiesers.
 MIN VOTERS/KIESER 3070 NORM 3612 MAX VOTERS/KIESER 4154

VOTING DISTRICT No. STEMDISTRIK No.	VOTING STATION NAME STEMLOKAAL NAAM	NUMBER OF VOTERS GETAL KIESERS	SPLIT VD VERDEELDE SD
11620707	DALIBANGO JUNIOR SECONDARY SCHOOL	248	
11620617	LUTUTU JUNIOR SECONDARY SCHOOL	590	
11620628	NYIBIBA JUNIOR SECONDARY SCHOOL	317	
11620303	DALUXOLO JUNIOR SECONDARY SCHOOL	104	
11620291	NCEMBU JUNIOR SECONDARY SCHOOL	843	
11620280	ELUNYAWENI JUNIOR SECONDARY SCHOOL	578	
11620639	ENKALWENI JUNIOR SECONDARY SCHOOL	340	
11620842	GABULINKUNGU JUNIOR SECONDARY SCHOOL	229	
11420042	MONTGOMERY JUNIOR SECONDARY SCHOOL	113	
11620606	WHEATLANDS JUNIOR SECONDARY	232	

Ward 2 comprises of a total of 3894 registered voters.
Wyk 2 bestaan uit 'n totaal van 3894 geregisteerde kiesers.
 MIN VOTERS/KIESER 3070 NORM 3612 MAX VOTERS/KIESER 4154

VOTING DISTRICT No. STEMDISTRIK No.	VOTING STATION NAME STEMLOKAAL NAAM	NUMBER OF VOTERS GETAL KIESERS	SPLIT VD VERDEELDE SD
11330042	SIBABALE SENIOR SECONDARY SCHOOL	1933	
11330019	NTOKOZWENI COMMUNITY HALL	1961	

Ward 3 comprises of a total of 3799 registered voters.
Wyk 3 bestaan uit 'n totaal van 3799 geregisteerde kiesers.
 MIN VOTERS/KIESER 3070 NORM 3612 MAX VOTERS/KIESER 4154

VOTING DISTRICT No. STEMDISTRIK No.	VOTING STATION NAME STEMLOKAAL NAAM	NUMBER OF VOTERS GETAL KIESERS	SPLIT VD VERDEELDE SD
11290025	SONWABILE COMMUNITY HALL	1520	
11290014	ROMAN CATHOLIC HALL	1032	
11290047	MACLEAR MET PRIMER	294	
11290058	UMTHAWELANGA SENIOR SECONDARY SCHOOL	565	
11290069	SITHOLE METHODIST CHURCH	388	

Ward 4 comprises of a total of 3894 registered voters.
Wyk 4 bestaan uit 'n totaal van 3894 geregisteerde kiesers.
 MIN VOTERS/KIESER 3070 NORM 3612 MAX VOTERS/KIESER 4154

VOTING DISTRICT No. STEMDISTRIK No.	VOTING STATION NAME STEMLOKAAL NAAM	NUMBER OF VOTERS GETAL KIESERS	SPLIT VD VERDEELDE SD
11290036	MACLEAR TOWN HALL	822	
11330020	UGIE TOWN HALL	635	
11370068	ELANDS HEIGHT SCHOOL	114	
11420019	JOELSHOEK FARM SCHOOL	244	
11800055	UPPER TSITSANA JUNIOR SECONDARY SCHOOL	685	
11800460	LUNDINI JUNIOR SECONDARY SCHOOL	451	
11800033	LOWER TSITSANA MISSION	562	
11800910	UPPER MHLONTLO SENIOR PRIMARY SCHOOL	170	
11801191	MDENI SENIOR PRIMARY SCHOOL	211	

Ward 5 comprises of a total of 4068 registered voters.
Wyk 5 bestaan uit 'n totaal van 4068 geregistreerde kiesers.

MIN VOTERS/KIESER 3070

NORM 3612

MAX VOTERS/KIESER 4154

VOTING DISTRICT No. STEMDISTRIK No.	VOTING STATION NAME STEMLOKAAL NAAM	NUMBER OF VOTERS GETAL KIESERS	SPLIT VD VERDEELDE SD
11620976	ZANDISE JUNIOR SECONDARY SCHOOL	165	
11620853	SITHANA JUNIOR SECONDARY SCHOOL	217	
11620864	GONIWE SENIOR PRIMARY SCHOOL	174	
11620987	LOWER NGXAZA SENIOR PRIMARY SCHOOL	85	
11621001	MABANDLA SENIOR PRIMARY SCHOOL	303	
11620695	NGXAZA JUNIOR SECONDARY SCHOOL	441	
11611055	NTUSHUNTUSHU JUNIOR SECONDARY SCHOOL	162	
11620370	HOPEDALE TENT	670	
11620022	MCWANGELE JUNIOR SECONDARY SCHOOL	533	
11620404	MBONISWENI JUNIOR SECONDARY SCHOOL	523	
11620369	INXU JUNIOR SECONDARY SCHOOL	389	
11620459	NTABA JUNIOR SECONDARY SCHOOL	406	

Ward 6 comprises of a total of 3238 registered voters.
Wyk 6 bestaan uit 'n totaal van 3238 geregistreerde kiesers.

MIN VOTERS/KIESER 3070

NORM 3612

MAX VOTERS/KIESER 4154

VOTING DISTRICT No. STEMDISTRIK No.	VOTING STATION NAME STEMLOKAAL NAAM	NUMBER OF VOTERS GETAL KIESERS	SPLIT VD VERDEELDE SD
11620033	UPPER ESINXAKO JUNIOR SECONDARY SCHOOL	298	
11620044	ESIQHUNGQWINI JUNIOR SECONDARY SCHOOL	230	

11620055	JAMANGILE SENIOR SECONDARY SCHOOL	513
11620066	SOMMERVILLE JUNIOR SECONDARY SCHOOL	191
11620101	MQOKOLWENI JUNIOR SECONDARY SCHOOL	350
11620448	QURANA JUNIOR SECONDARY SCHOOL	125
11620998	NTYWENKA PLANTATION	83
11621012	MAYNARD JUNIOR SECONDARY SCHOOL	112
11620460	NTYWENKA JUNIOR SECONDARY SCHOOL	201
11620684	SOBANTU JUNIOR SECONDARY SCHOOL	104
11620493	NGXOTHO JUNIOR SECONDARY SCHOOL	250
11620437	LOWER SINXAKO SCHOOL	371
11621056	TANDISIZWE COMM & TECHNICAL HIGH SCHOOL	122
11800909	NGCELE JUNIOR SECONDARY SCHOOL	288

Ward 7 comprises of a total of 3478 registered voters.
Wyk 7 bestaan uit 'n totaal van 3478 geregistreerde kiesers.

MIN VOTERS/KIESER 3070 NORM 3612 MAX VOTERS/KIESER 4154

VOTING DISTRICT No. STEMDISTRIK No.	VOTING STATION NAME STEMLOKAAL NAAM	NUMBER OF VOTERS GETAL KIESERS	SPLIT VD VERDEELDE SD
11610290	KHOHLOPONG JUNIOR SECONDARY SCHOOL	345	
11610335	ETYENI JUNIOR SECONDARY SCHOOL	488	
11610313	TSHIKITSHA JUNIOR SECONDARY SCHOOL	225	
11610076	NGXAXA GORGE JUNIOR SECONDARY SCHOOL	186	
11611066	NGQQAYI JUNIOR SECONDARY SCHOOL	188	
11611134	NKAHLULO JUNIOR SECONDARY SCHOOL	89	
11610492	UPPER NXAXA SCHOOL	716	
11610649	LOWER KHOHLOPONG SENIOR PRIMARY SCHOOL	124	
11610650	GAMAKULU TRIBAL AUTHORITY	95	
11610717	MPINDWENI SENIOR PRIMARY SCHOOL	147	
11611088	NTABODULI JUNIOR SECONDARY SCHOOL	196	
11610481	BOTSABELLO JUNIOR SECONDARY SCHOOL	328	
11800303	NKUNYANA JUNIOR SECONDARY SCHOOL	351	

Ward 8 comprises of a total of 3441 registered voters.
Wyk 8 bestaan uit 'n totaal van 3441 geregistreerde kiesers.

MIN VOTERS/KIESER 3070 NORM 3612 MAX VOTERS/KIESER 4154

VOTING DISTRICT No. STEMDISTRIK No.	VOTING STATION NAME STEMLOKAAL NAAM	NUMBER OF VOTERS GETAL KIESERS	SPLIT VD VERDEELDE SD
--	--	-----------------------------------	--------------------------

11800684	NOMZAMO SPS	47
11800673	NKAMANE SENIOR PRIMARY SCHOOL	285
11800897	LUZIE DRIFT JUNIOR SECONDARY SCHOOL	390
11801203	THEMBENI SPS	148
11800493	MOROKA JUNIOR SECONDARY SCHOOL	318
11800448	MKAKA STORE	191
11801113	BATLOKOA JUNIOR SECONDARY SCHOOL	384
11801089	LENGOPENG SENIOR PRIMARY SCHOOL	150
11801214	NATLANE SEKONYELA SENIOR PRIMARY SCHOOL	230
11800695	LOWER KETE-KETE JUNIOR SECONDARY SCHOOL	266
11800325	UMFANTA JUNIOR SECONDARY SCHOOL	664
11800066	LUZIE POORT JUNIOR SECONDARY SCHOOL	368

Ward 9 comprises of a total of 3383 registered voters.

Wyk 9 bestaan uit 'n totaal van 3383 geregistreerde kiesers.

MIN VOTERS/KIESER 3070

NORM 3612

MAX VOTERS/KIESER 4154

VOTING DISTRICT No. STEMDISTRIK No.	VOTING STATION NAME STEMLOKAAL NAAM	NUMBER OF VOTERS GETAL KIESERS	SPLIT VD VERDEELDE SD
11710011	MOUNT FLETCHER TOWN HALL	1840	
11710055	BRA T CAFE TENT	533	
11710022	MORIVIAN CHURCH HALL	1010	

Ward 10 comprises of a total of 3776 registered voters.

Wyk 10 bestaan uit 'n totaal van 3776 geregistreerde kiesers.

MIN VOTERS/KIESER 3070

NORM 3612

MAX VOTERS/KIESER 4154

VOTING DISTRICT No. STEMDISTRIK No.	VOTING STATION NAME STEMLOKAAL NAAM	NUMBER OF VOTERS GETAL KIESERS	SPLIT VD VERDEELDE SD
11800459	ZAMUXOLO JUNIOR SECONDARY SCHOOL	476	
11800482	TSOLOBENG JUNIOR SECONDARY SCHOOL	822	
11800167	ST THOMAS JUNIOR SECONDARY SCHOOL	570	
11800011	EZINGONYAMEN TRIBAL AUTHORITY	509	
11801124	MAHEMENG SENIOR PRIMARY SCHOOL	470	
11800077	EZINGONYAMENI JUNIOR SECONDARY SCHOOL	414	
11800156	MBAMBANGWE JUNIOR SECONDARY SCHOOL	459	
11800662	ESILINDINI JUNIOR SECONDARY SCHOOL	56	

Ward 11 comprises of a total of 3467 registered voters.
Wyk 11 bestaan uit 'n totaal van 3467 geregistreerde kiesers.
 MIN VOTERS/KIESER 3070 NORM 3612 MAX VOTERS/KIESER 4154

VOTING DISTRICT No. STEMDISTRIK No.	VOTING STATION NAME STEMLOKAAL NAAM	NUMBER OF VOTERS GETAL KIESERS	SPLIT VD VERDEELDE SD
11800943	INTSASA JUNIOR SECONDARY SCHOOL	178	
11800796	KHULANATHI JUNIOR SECONDARY SCHOOL	461	
11800774	NGAQANGANA JUNIOR SECONDARY SCHOOL	202	
11800235	MAFUSINI JUNIOR PRIMARY SCHOOL	144	
11800752	LERATO TENT	158	
11800808	SIXHOTYENI SENIOR PRIMARY SCHOOL	128	
11800831	MOTSOANE SENIOR PRIMARY SCHOOL	172	
11800527	FARVIEW JUNIOR SECONDARY SCHOOL	497	
11800213	FLETCHERVILLE JUNIOR SECONDARY SCHOOL	368	
11800190	DENGWANE JUNIOR SECONDARY SCHOOL	372	
11800189	TINANA JUNIOR SECONDARY SCHOOL	225	
11800785	LUBISINI JUNIOR SECONDARY SCHOOL	562	

Ward 12 comprises of a total of 3205 registered voters.
Wyk 12 bestaan uit 'n totaal van 3205 geregistreerde kiesers.
 MIN VOTERS/KIESER 3070 NORM 3612 MAX VOTERS/KIESER 4154

VOTING DISTRICT No. STEMDISTRIK No.	VOTING STATION NAME STEMLOKAAL NAAM	NUMBER OF VOTERS GETAL KIESERS	SPLIT VD VERDEELDE SD
11800550	POPOPO SCHOOL	295	
11800561	MANGOLOANENG JUNIOR SECONDARY SCHOOL	496	
11800763	NTABAYIKHONJWA SHOP	160	
11801258	LEHLAKANENG PRE SCHOOL	167	
11800820	POLOKOE JUNIOR SECONDARY SCHOOL	312	
11800718	MORULANE JUNIOR SECONDARY SCHOOL	456	
11800842	NGOLILOE JUNIOR SECONDARY SCHOOL	411	
11800875	MAHANYANENG JUNIOR SECONDARY SCHOOL	295	
11800291	SETAKA JUNIOR SECONDARY SCHOOL	342	
11800819	PHAPHAMA SENIOR PRIMARY SCHOOL	271	

Ward 13 comprises of a total of 3676 registered voters.
Wyk 13 bestaan uit 'n totaal van 3676 geregistreerde kiesers.
 MIN VOTERS/KIESER 3070 NORM 3612 MAX VOTERS/KIESER 4154

VOTING DISTRICT No. STEMDISTRIK No.	VOTING STATION NAME STEMLOKAAL NAAM	NUMBER OF VOTERS GETAL KIESERS	SPLIT VD VERDEELDE SD
11800549	KOEBONG JUNIOR SECONDARY SCHOOL	478	
11801135	MALUTI SENIOR PRIMARY SCHOOL	241	
11800886	LOWER NXOTSHANA JUNIOR SECONDARY SCHOOL	524	
11800628	MOSANA JUNIOR SECONDARY SCHOOL	274	
11800853	NTOKO JUNIOR SECONDARY SCHOOL	262	
11800538	MAKOATLANE JUNIOR SECONDARY SCHOOL	511	
11801001	MASHATA	162	
11800246	NXOTSHANA JUNIOR SECONDARY SCHOOL	264	
11800268	SEQHOBONG JUNIOR SECONDARY SCHOOL	474	
11800280	MOHOABATSANE JUNIOR SECONDARY SCHOOL	486	

Ward 14 comprises of a total of 4010 registered voters.
Wyk 14 bestaan uit 'n totaal van 4010 geregistreerde kiesers.

MIN VOTERS/KIESER 3070

NORM 3612

MAX VOTERS/KIESER 4154

VOTING DISTRICT No. STEMDISTRIK No.	VOTING STATION NAME STEMLOKAAL NAAM	NUMBER OF VOTERS GETAL KIESERS	SPLIT VD VERDEELDE SD
11800741	ZANYENI JUNIOR SECONDARY SCHOOL	341	
11801146	THABAKHUBEDU JUNIOR SECONDARY SCHOOL	330	
11800864	LEHANA'S PASS	247	
11800640	UPPER PHIRINTSU JUNIOR SECONDARY SCHOOL	180	
11800224	NQALWENI JUNIOR SECONDARY SCHOOL	405	
11800101	BETHANIA SENIOR SECONDARY SCHOOL	533	
11800471	MAMONTOELI JUNIOR SECONDARY SCHOOL	905	
11800099	BETHANIA JUNIOR SECONDARY SCHOOL	552	
11800088	VUVU JUNIOR SECONDARY SCHOOL	517	

Ward 15 comprises of a total of 3479 registered voters.
Wyk 15 bestaan uit 'n totaal van 3479 geregistreerde kiesers.

MIN VOTERS/KIESER 3070

NORM 3612

MAX VOTERS/KIESER 4154

VOTING DISTRICT No. STEMDISTRIK No.	VOTING STATION NAME STEMLOKAAL NAAM	NUMBER OF VOTERS GETAL KIESERS	SPLIT VD VERDEELDE SD
11710044	THEMBALETHU CAFE TENT	674	
11710033	PUMAPHETHE SHOP	993	
11801102	LIPHOFONG JUNIOR SECONDARY SCHOOL	91	
11800112	LOWER THOKOANA JUNIOR SECONDARY SCHOOL	577	

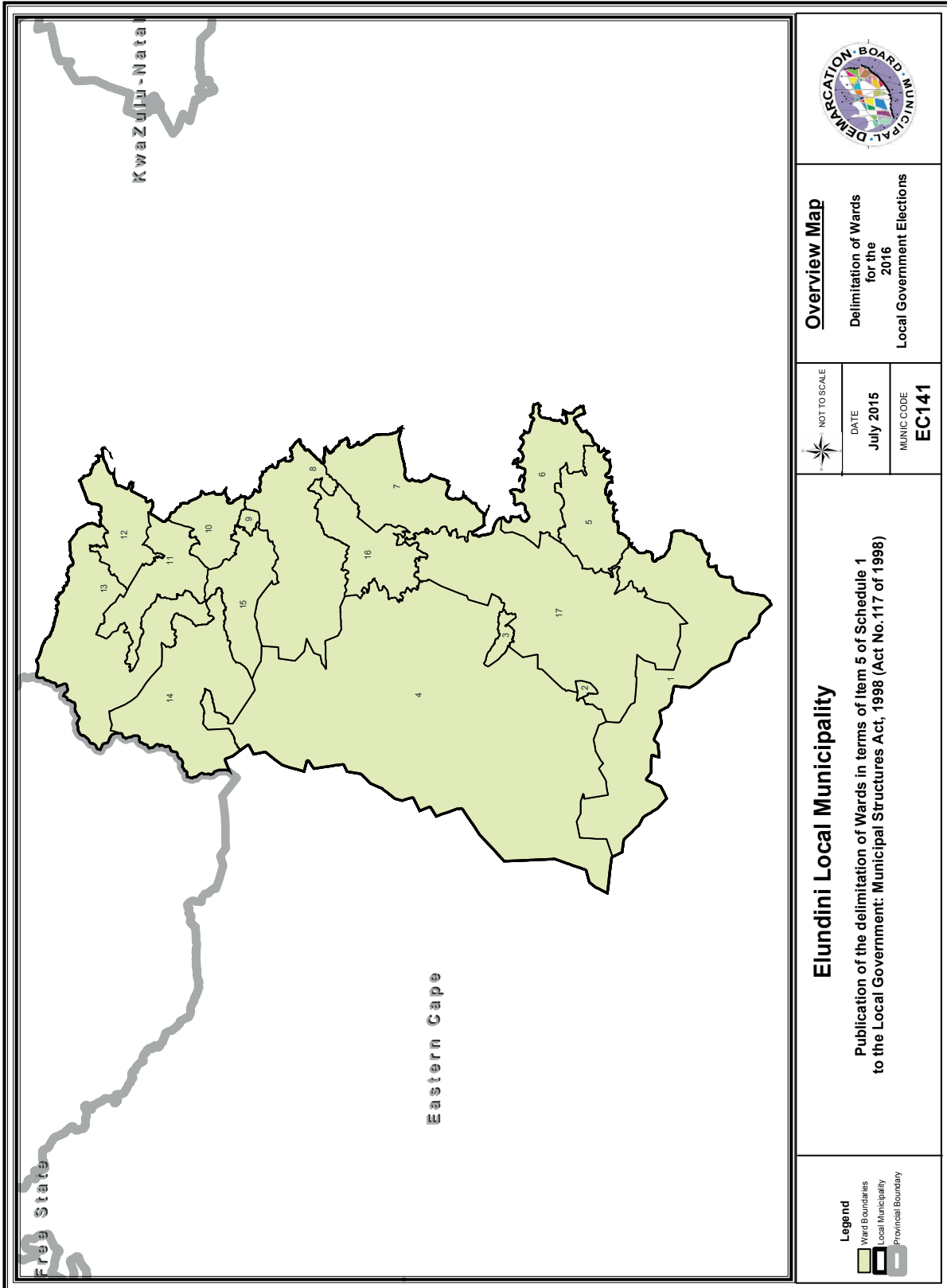
11800134	KHALATSU SENIOR PRIMARY SCHOOL	302
11801090	LIPHAKEENG SENIOR PRIMARY SCHOOL	207
11801236	MAKHULENG SENIOR PRIMARY SCHOOL	193
11800505	HILL GATE TRIBAL AUTHORITY	442

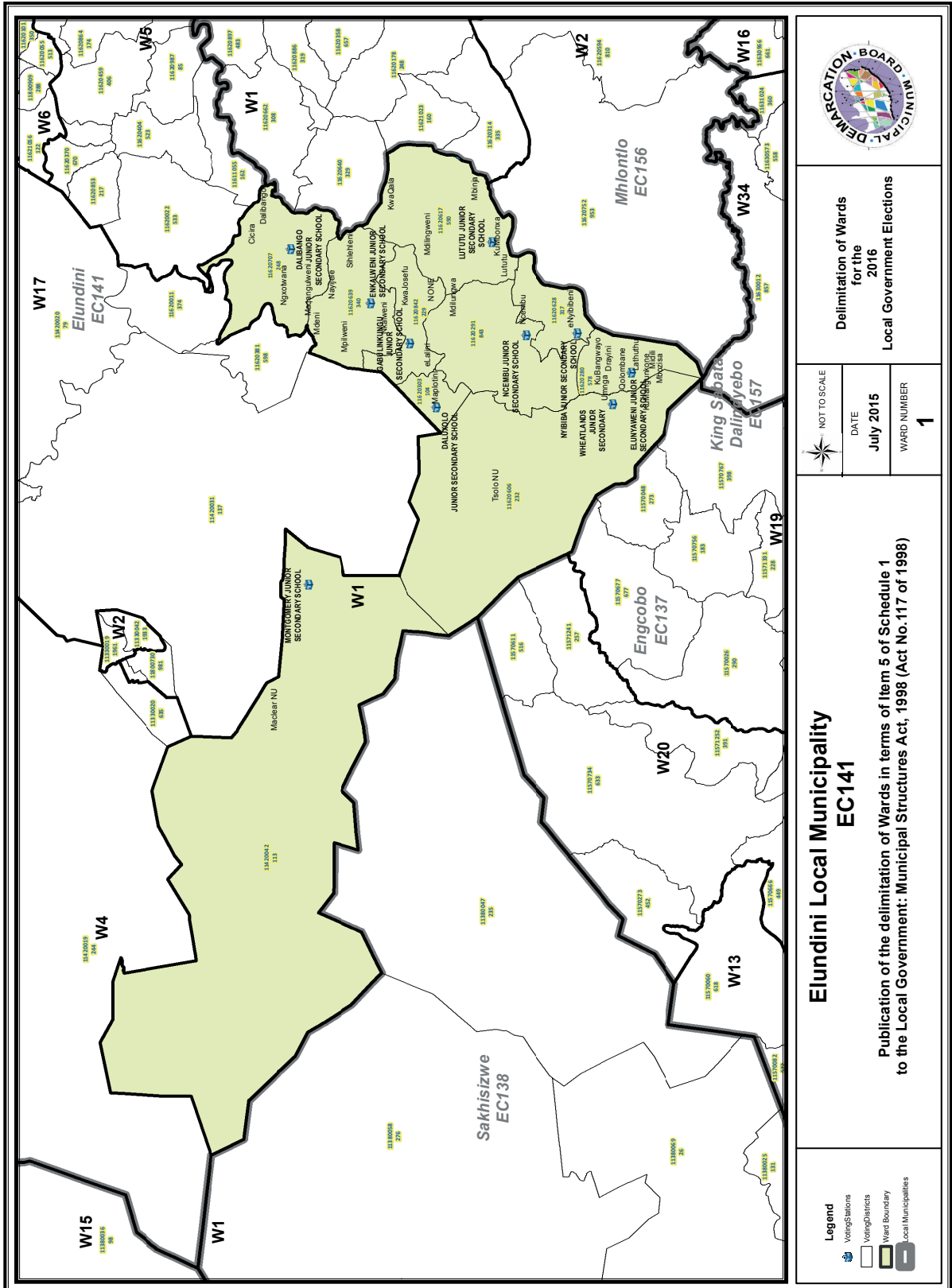
Ward 16 comprises of a total of 3484 registered voters.
Wyk 16 bestaan uit 'n totaal van 3484 geregistreerde kiesers.
 MIN VOTERS/KIESER 3070 NORM 3612 MAX VOTERS/KIESER 4154

VOTING DISTRICT No. STEMDISTRIK No.	VOTING STATION NAME STEMLOKAAL NAAM	NUMBER OF VOTERS GETAL KIESERS	SPLIT VD VERDEELDE SD
11610302	FRANK MOSHOESHOE JUNIOR SECONDARY SCHOOL	466	
11611145	METHODIST CHURCH	140	
11611077	TAUNG JUNIOR SECONDARY SCHOOL	163	
11800044	MHLONTLO SENIOR SECONDARY SCHOOL	365	
11800932	KOLONI SENIOR PRIMARY SCHOOL	176	
11800921	CAMBALALA SPS	271	
11801247	TLOLOENG SENIOR PRIMARY SCHOOL	142	
11800022	CHEVY-CHASE JUNIOR SECONDARY SCHOOL	266	
11800707	MAGEDLA JUNIOR SECONDARY SCHOOL	493	
11800437	SOLOMZI JUNIOR SECONDARY SCHOOL	711	
11800257	KETE KETE JUNIOR SECONDARY SCHOOL	291	

Ward 17 comprises of a total of 3520 registered voters.
Wyk 17 bestaan uit 'n totaal van 3520 geregistreerde kiesers.
 MIN VOTERS/KIESER 3070 NORM 3612 MAX VOTERS/KIESER 4154

VOTING DISTRICT No. STEMDISTRIK No.	VOTING STATION NAME STEMLOKAAL NAAM	NUMBER OF VOTERS GETAL KIESERS	SPLIT VD VERDEELDE SD
11330031	KRUGER HALL	274	
11620381	GQAQHALA ST PATRICK MISSION	598	
11290081	TEMPORARY VOTING STATION (GREEN FIELDS MUNI	317	
11420031	RETREAT FARM SCHOOL	137	
11620011	MBIDLANA JUNIOR SECONDARY SCHOOL	374	
11290070	VINCENT PRE-SCHOOL	689	
11420020	ROSARY FARM	79	
11420053	VIPAN FARM SCHOOL	45	
11420064	NCOTHA FARM SCHOOL	26	
11800730	UGIE VEILINGSKRAAL TENT	981	





Legend

- Voting Stations
- Voting Districts
- Ward Boundary
- Local Municipalities

Elundini Local Municipality EC141

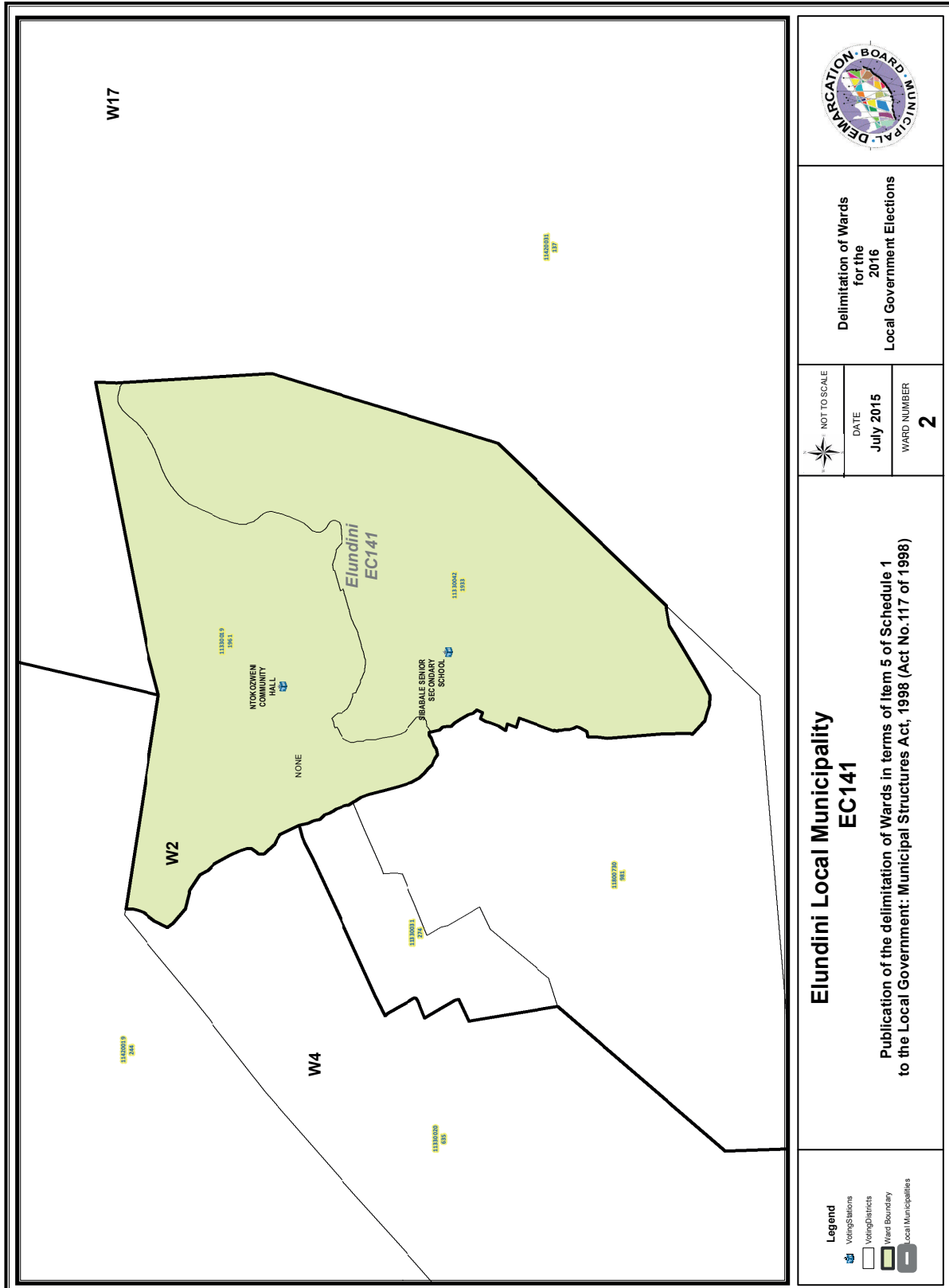
Publication of the delimitation of Wards in terms of Item 5 of Schedule 1 to the Local Government: Municipal Structures Act, 1998 (Act No.117 of 1998)

Delimitation of Wards for the 2016 Local Government Elections

NOT TO SCALE

DATE
July 2015

WARD NUMBER
1

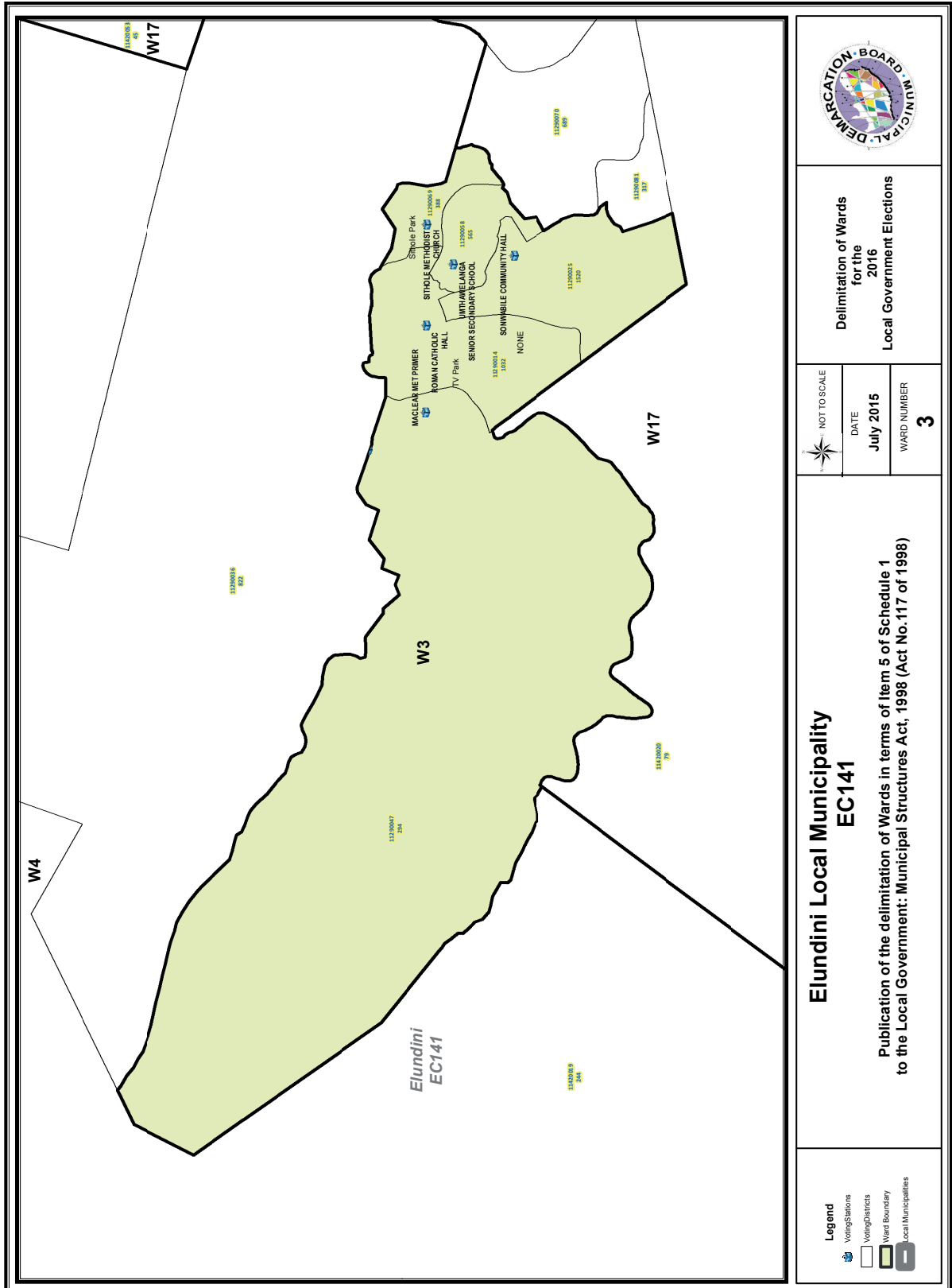


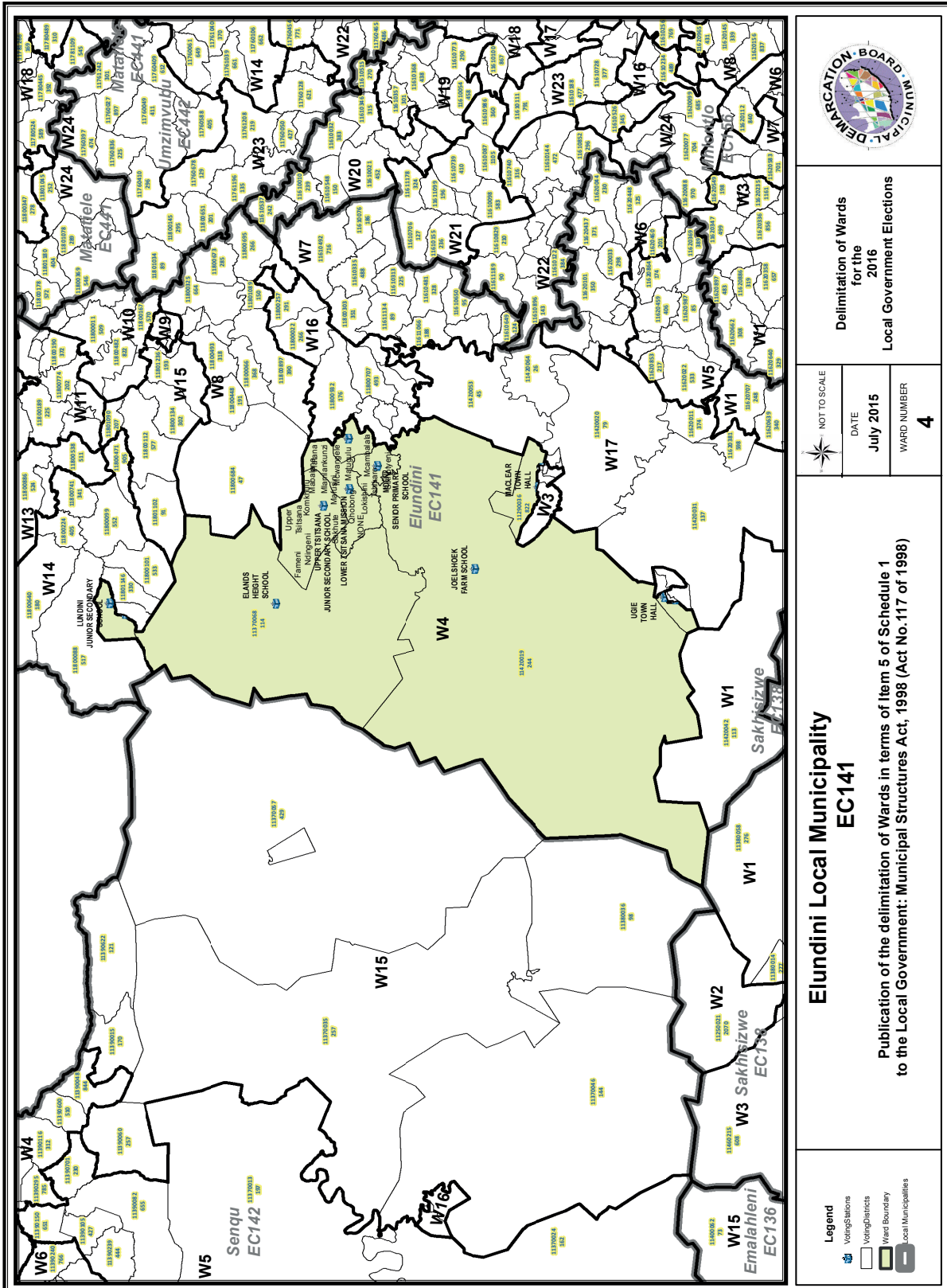
**Delimitation of Wards
for the
2016
Local Government Elections**

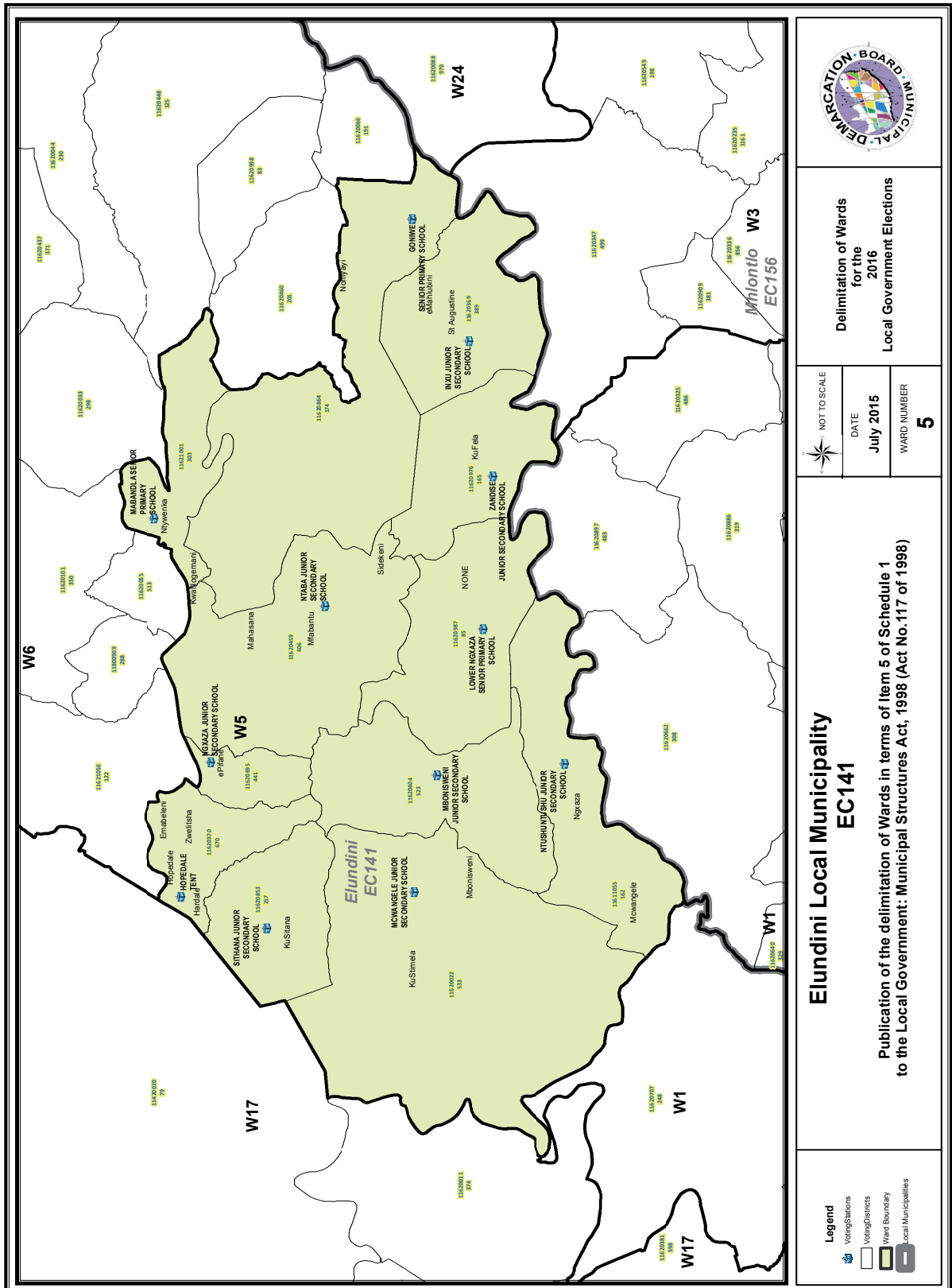
NOT TO SCALE
DATE
July 2015
WARD NUMBER
2

**Elundini Local Municipality
EC141**
Publication of the delimitation of Wards in terms of Item 5 of Schedule 1
to the Local Government: Municipal Structures Act, 1998 (Act No. 117 of 1998)

- Legend**
- Voting Stations
 - Voting Districts
 - Ward Boundary
 - Local Municipalities







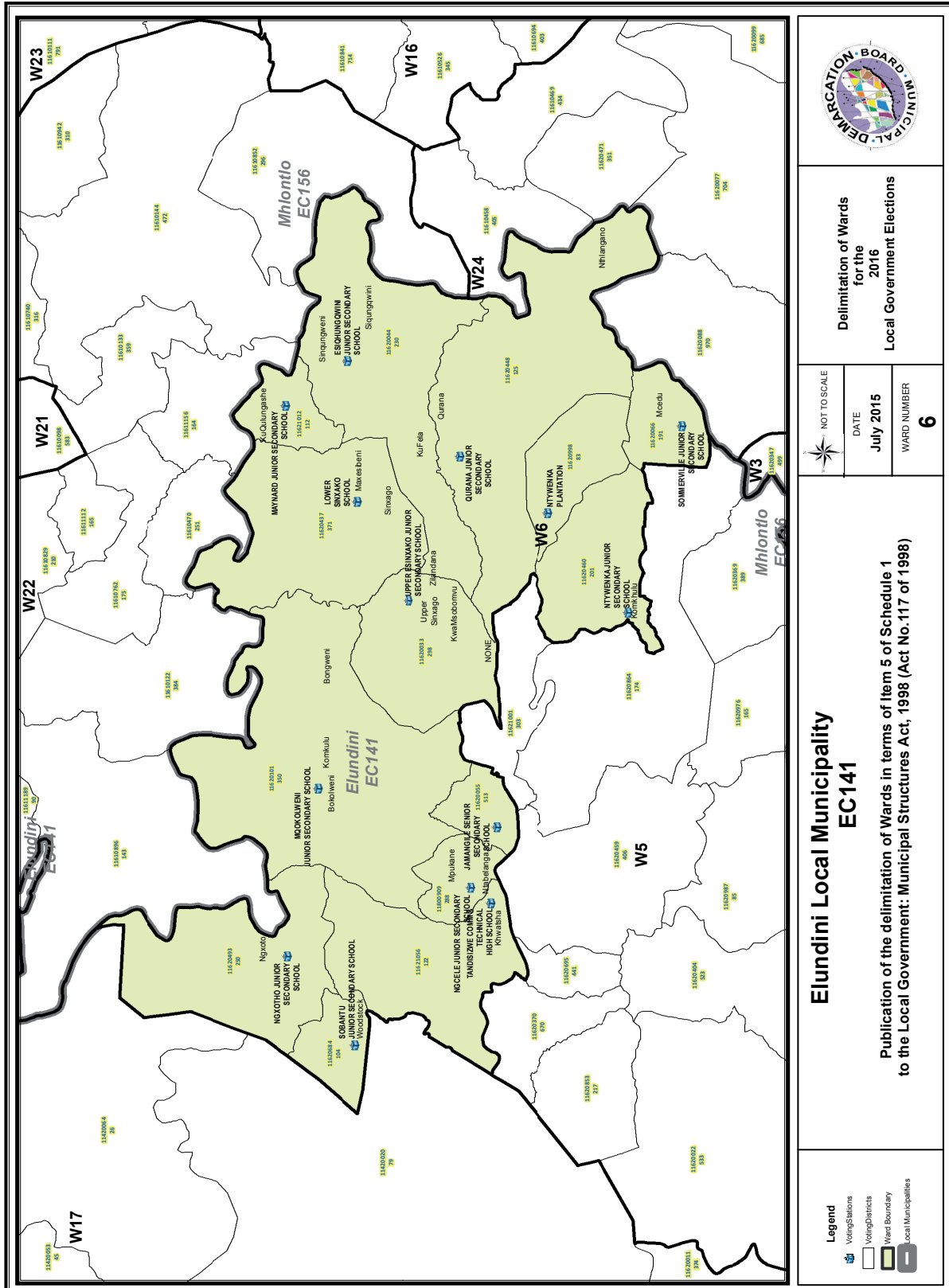
Delimitation of Wards
for the
2016
Local Government Elections

NOT TO SCALE
DATE
July 2015
WARD NUMBER
5

**Elundini Local Municipality
EC141**

Publication of the delimitation of Wards in terms of Item 5 of Schedule 1
to the Local Government: Municipal Structures Act, 1998 (Act No.117 of 1998)

- Legend**
- Voting Stations
 - Voting Districts
 - Ward Boundary
 - Local Municipalities



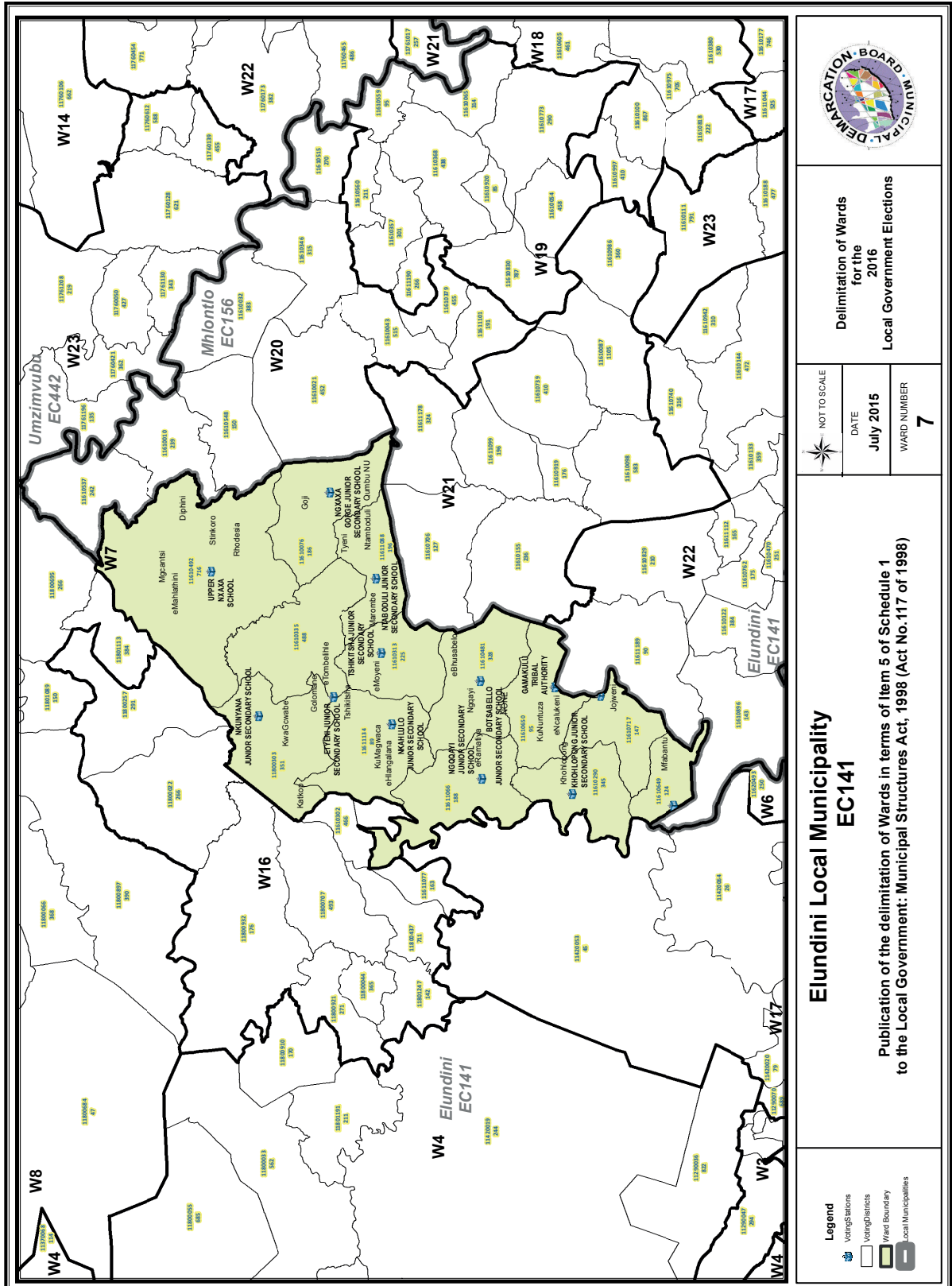
**Delimitation of Wards
for the
2016
Local Government Elections**

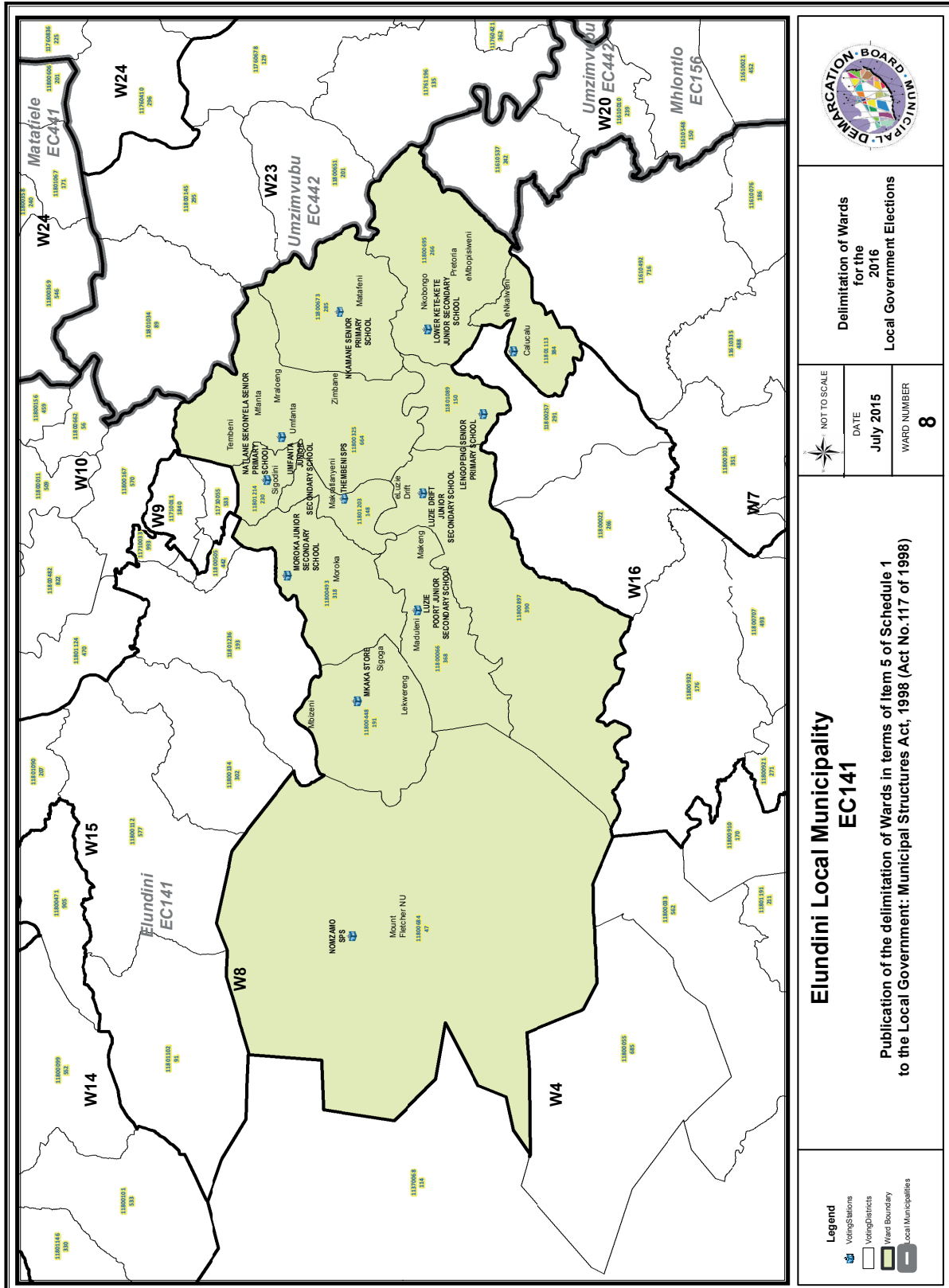
NOT TO SCALE
DATE July 2015
WARD NUMBER 6

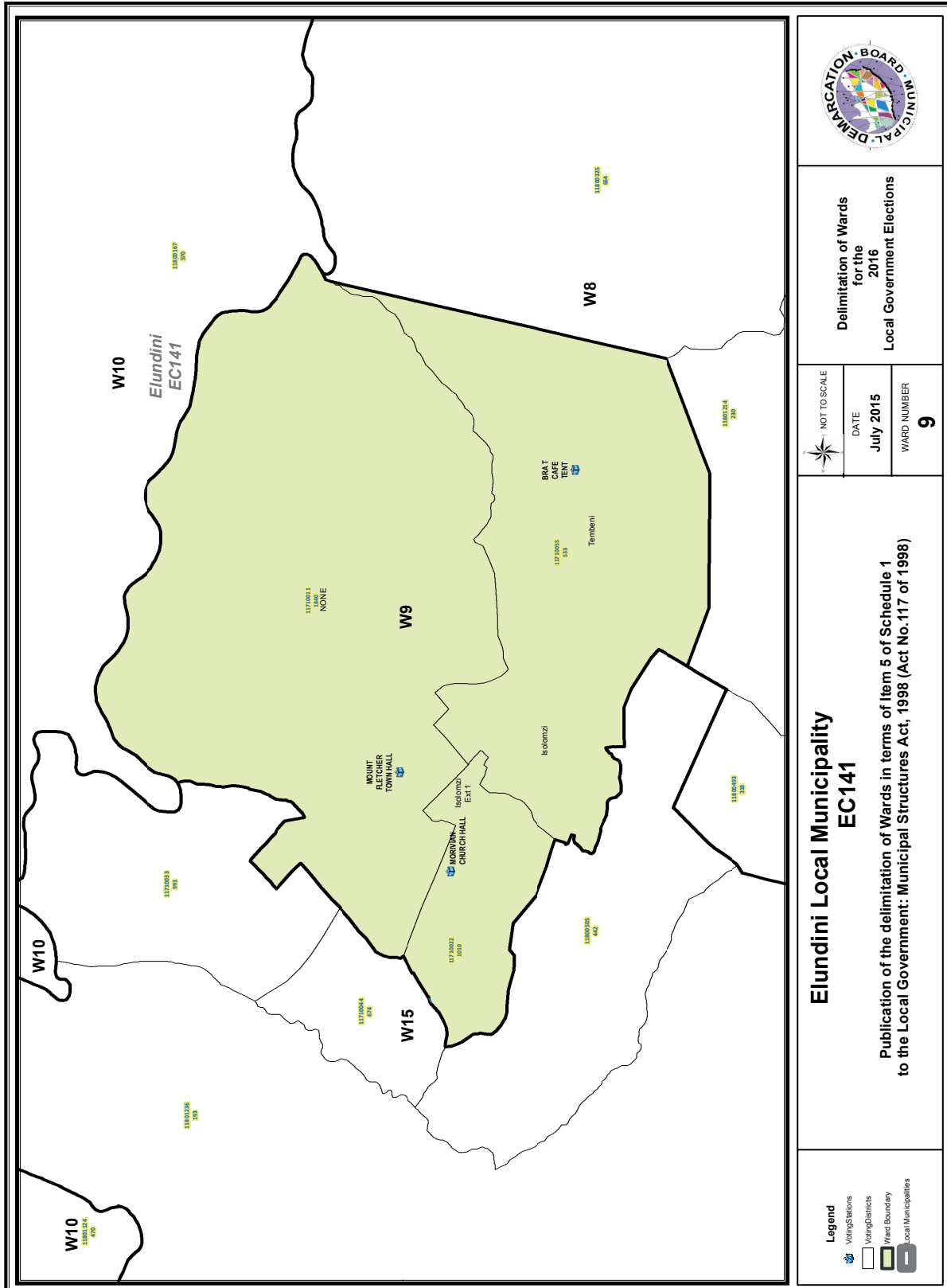
**Elundini Local Municipality
EC141**

**Publication of the delimitation of Wards in terms of Item 5 of Schedule 1
to the Local Government: Municipal Structures Act, 1998 (Act No.117 of 1998)**

- Legend**
- Voting Stations
 - Voting Districts
 - Ward Boundary
 - Local Municipalities







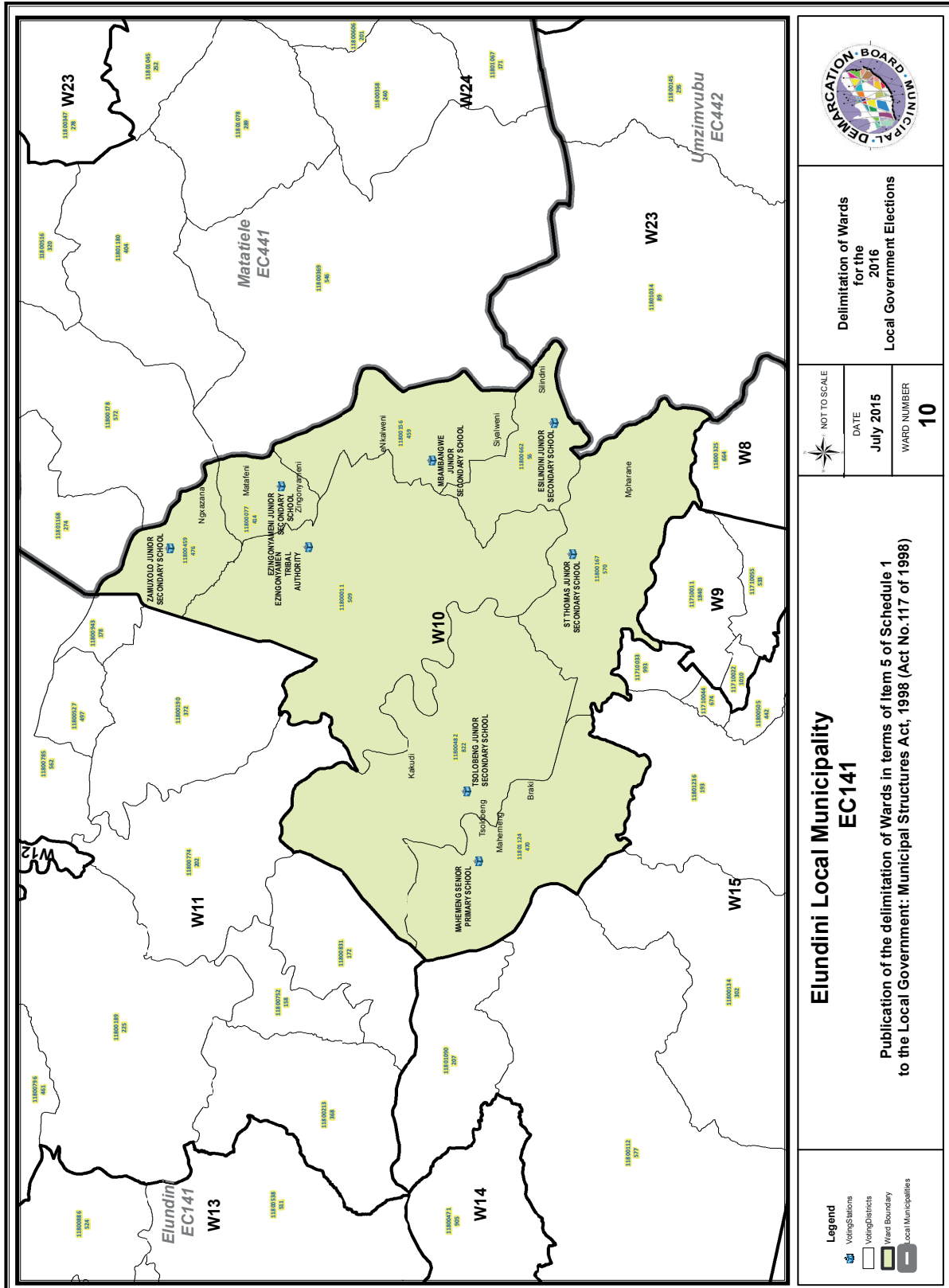
Delimitation of Wards for the 2016 Local Government Elections

NOT TO SCALE
DATE July 2015
WARD NUMBER 9

Elundini Local Municipality EC141

Publication of the delimitation of Wards in terms of Item 5 of Schedule 1 to the Local Government: Municipal Structures Act, 1998 (Act No.117 of 1998)

- Legend**
- Voting Stations
 - Voting Districts
 - Ward Boundary
 - Local Municipalities



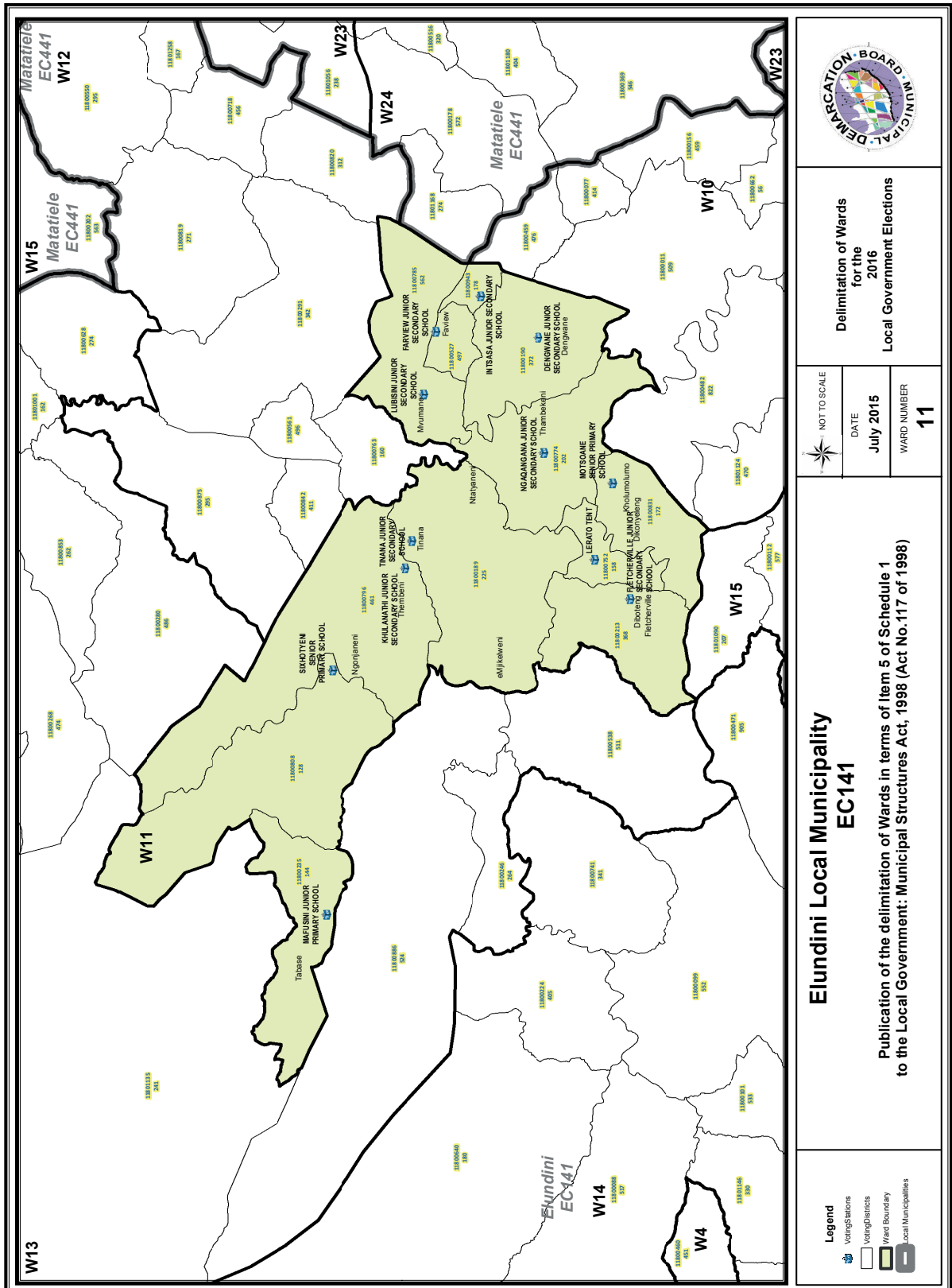
Delimitation of Wards
for the
2016
Local Government Elections

NOT TO SCALE
DATE
July 2015
WARD NUMBER
10

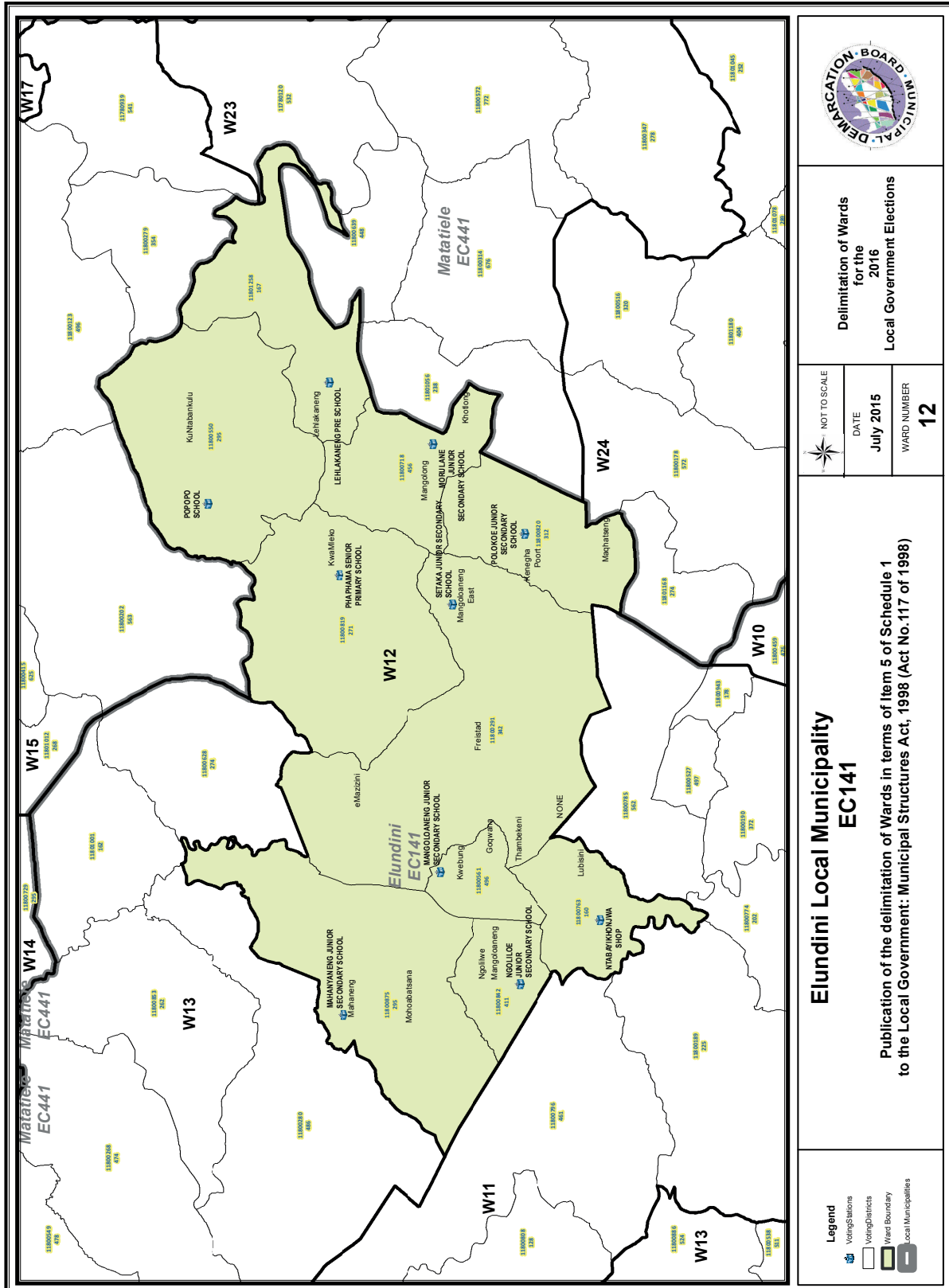
**Elundini Local Municipality
EC141**

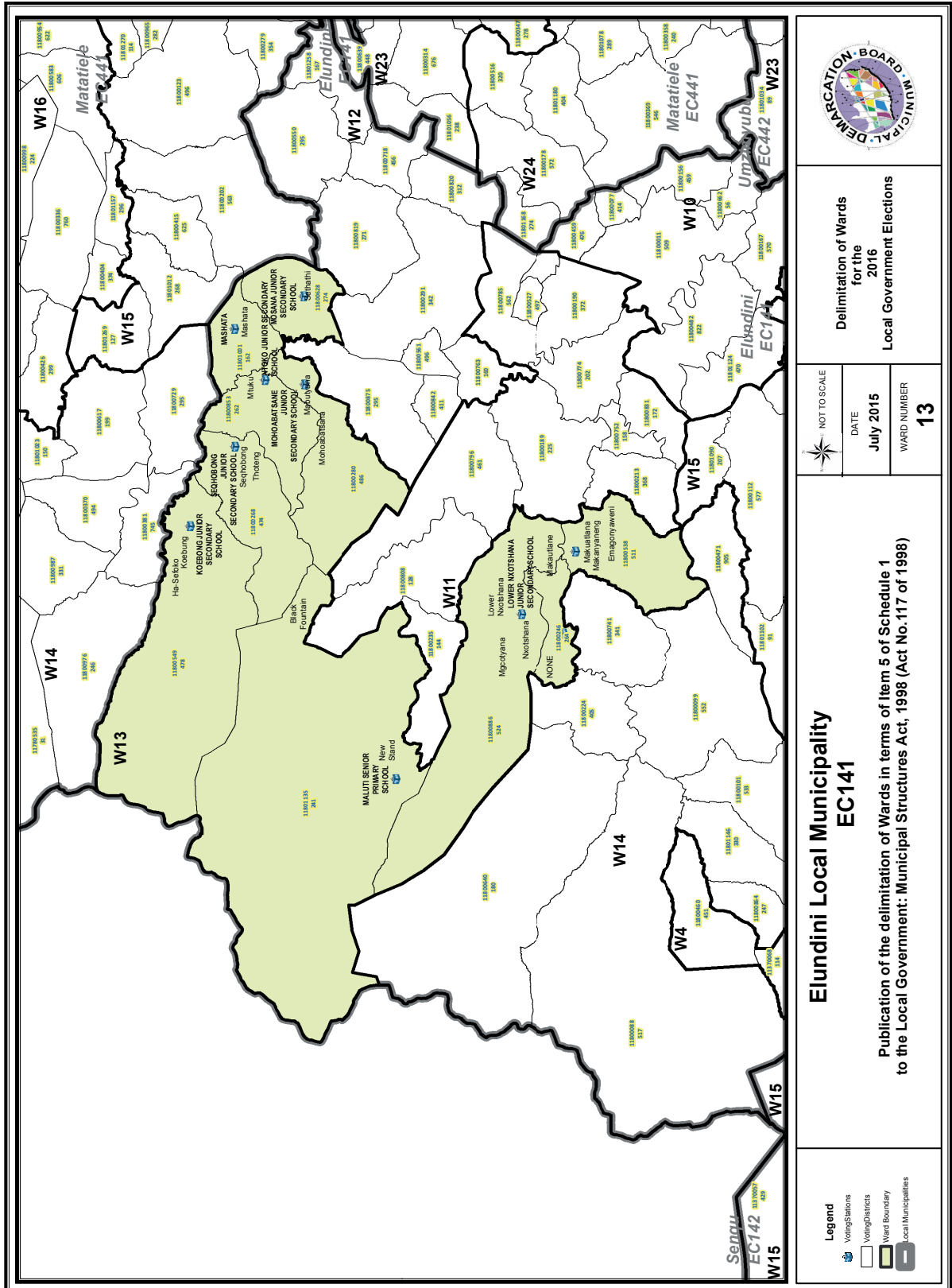
Publication of the delimitation of Wards in terms of Item 5 of Schedule 1
to the Local Government: Municipal Structures Act, 1998 (Act No.117 of 1998)

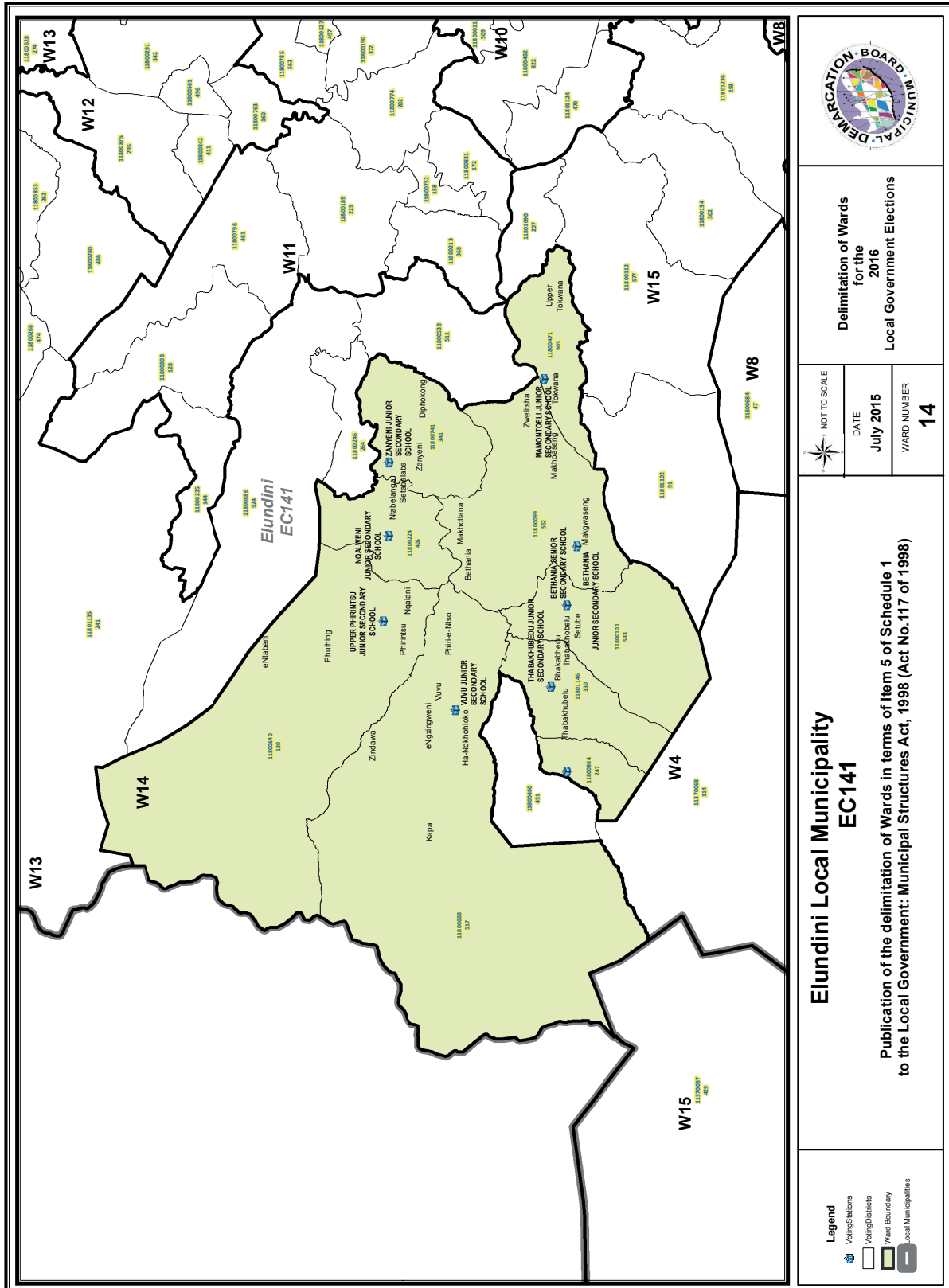
- Legend**
- Voting Stations
 - Voting Districts
 - Ward Boundary
 - Local Municipalities

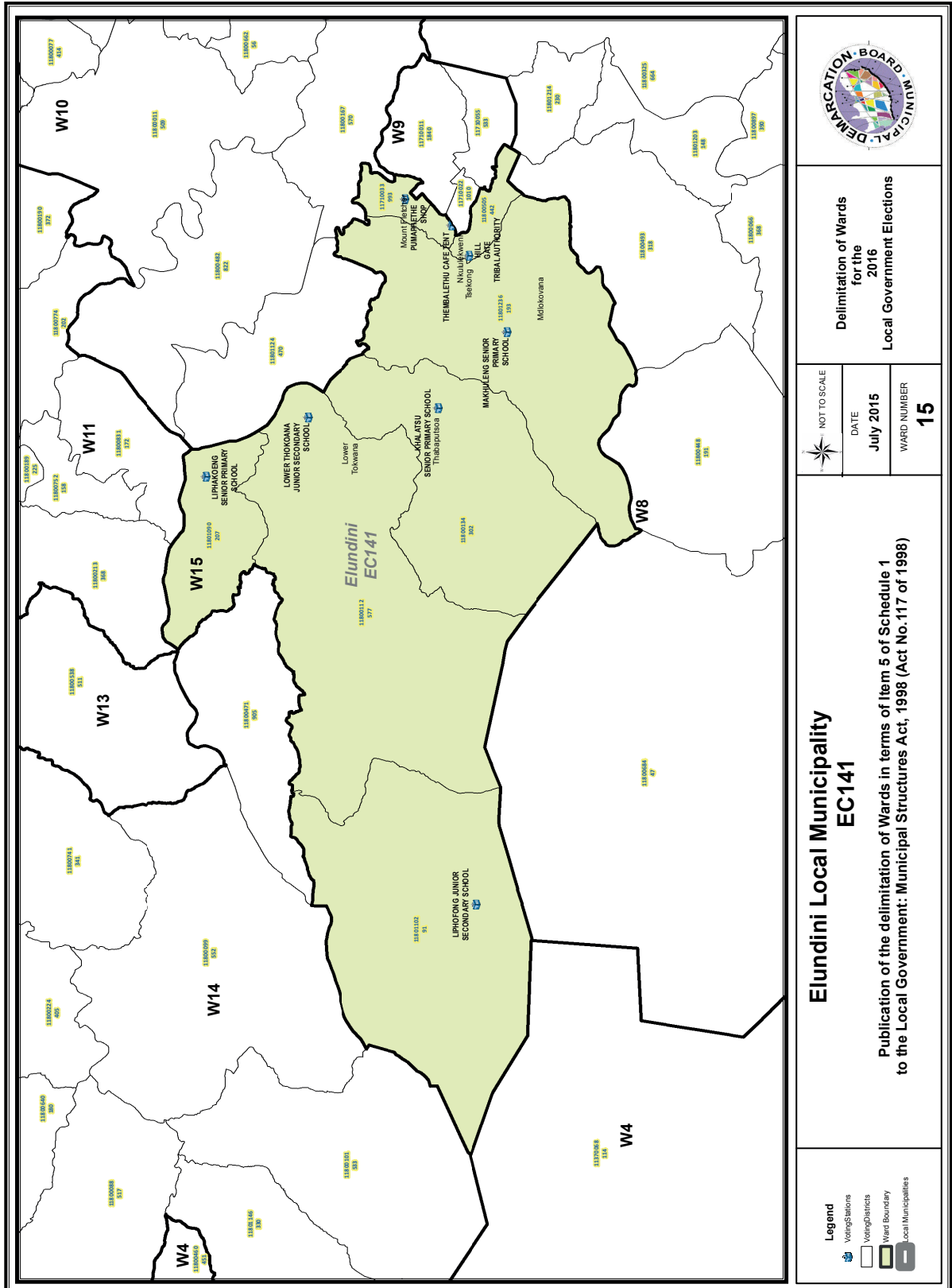


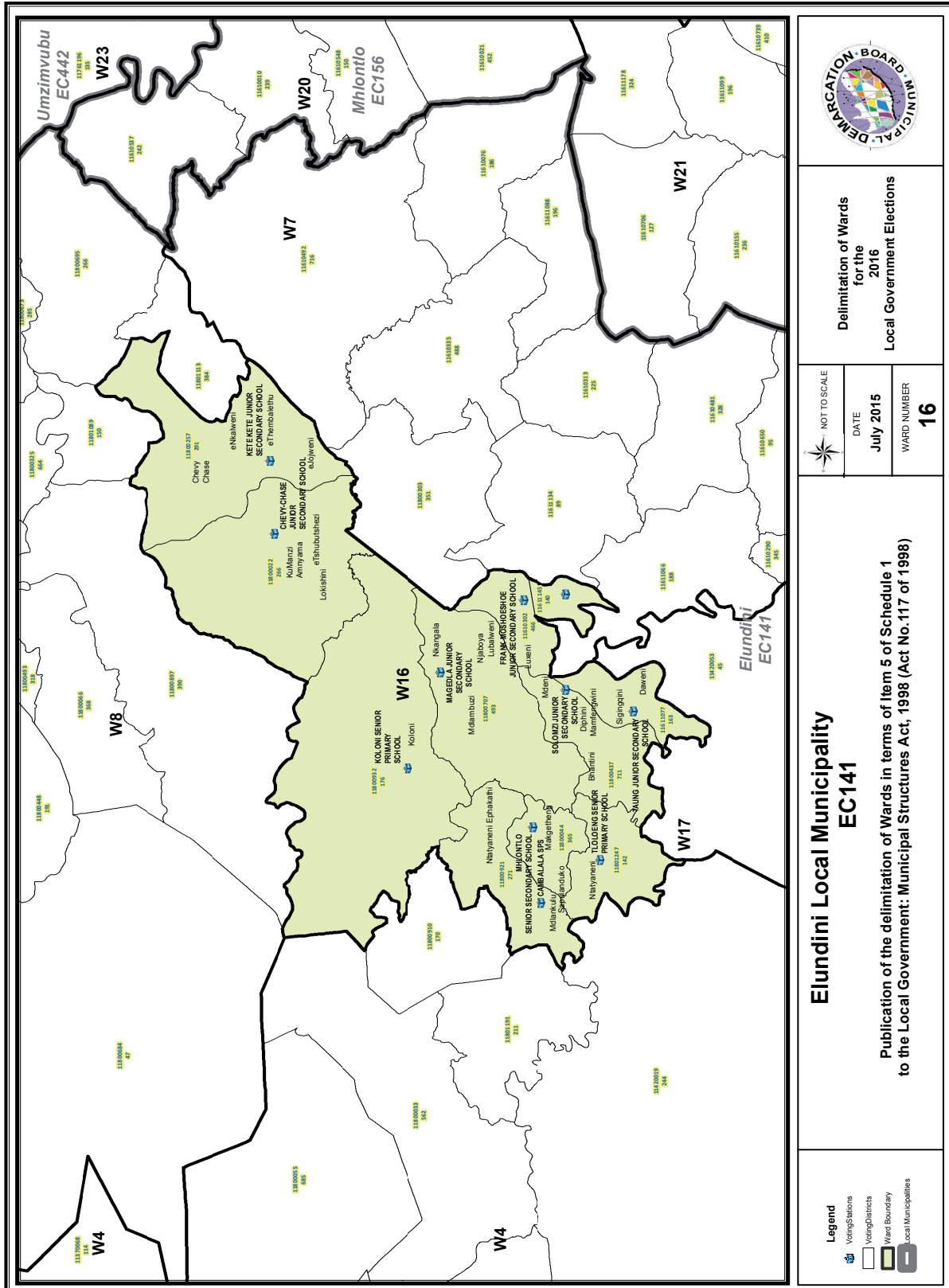
	
Delimitation of Wards for the 2016 Local Government Elections	
NOT TO SCALE 	DATE July 2015
WARD NUMBER 11	
Elundini Local Municipality EC141	
Publication of the delimitation of Wards in terms of Item 5 of Schedule 1 to the Local Government: Municipal Structures Act, 1998 (Act No.117 of 1998)	
Legend  Voting Stations  Voting Districts  Ward Boundary  Local Municipalities	

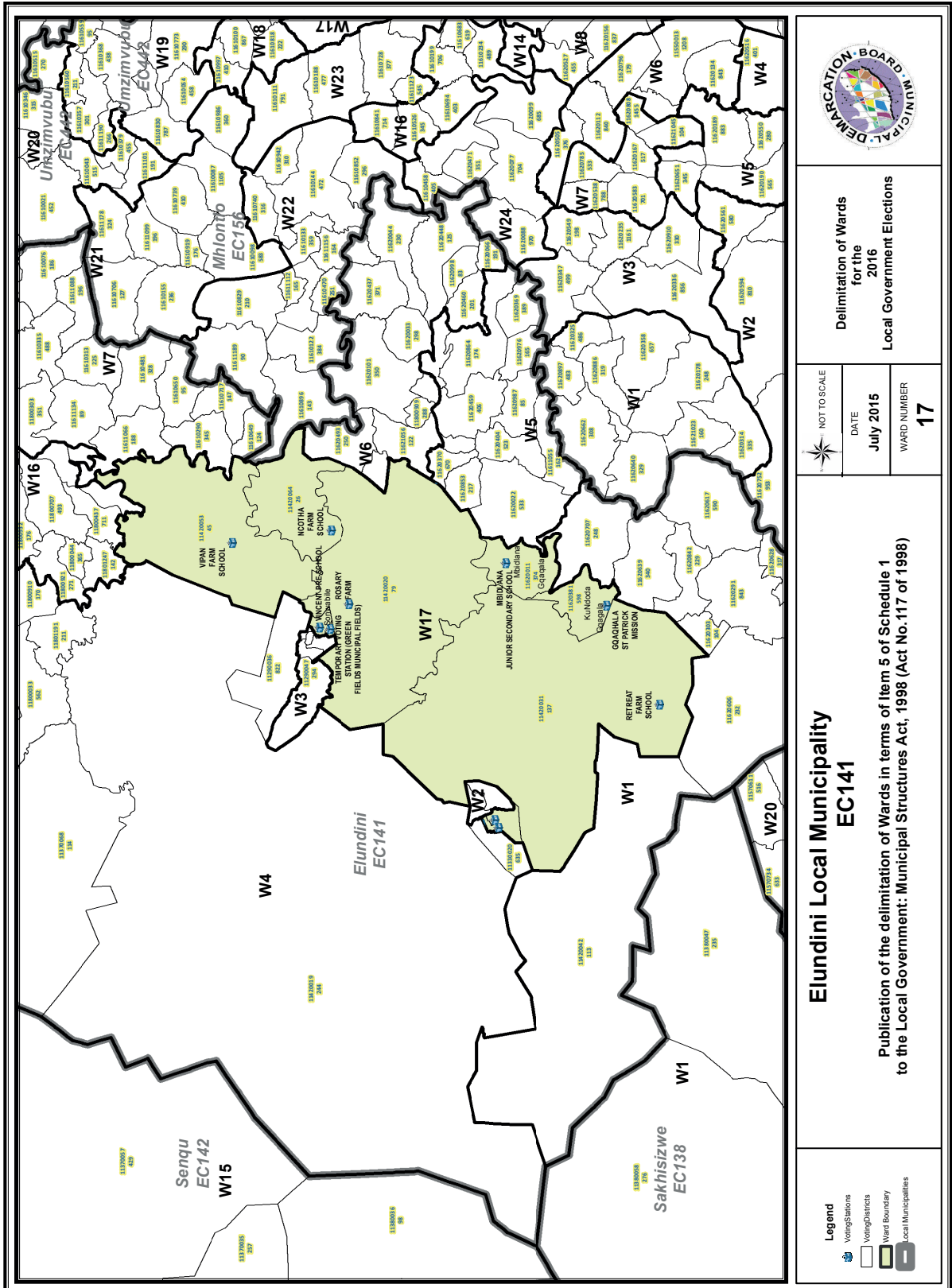












FORM/VORM MDB5

WARD DELIMITATION/

WYKSAFBAKENING

**OBJECTION IN TERMS OF ITEM 5(2) OF SCHEDULE 1 TO THE LOCAL GOVERNMENT:
MUNICIPAL STRUCTURES ACT, 1998**

**BESWAAR INGEVOLGE ITEM 5(2) VAN BYLAE 1 VAN DIE WET OP PLAASLIKE REGERING:
MUNISIPALE STRUKTURE, 1998**

Name of municipality/ Naam van Munisipaliteit :.....

Code/Kode :.....

**Name of aggrieved person/institution/Naam van beswaarde persoon/instelling :
.....**

**Contact person in case of an institution/ Kontak persoon in geval van 'n instelling:
.....**

Address/Adres:.....

Tel. number/ Tel. nommer:.....Cell number/ Selfoonnommer:

Email address:.....

PLEASE USE ADDITIONAL PAGE SHOULD THE ALTERNATIVE PROPOSALS BE MORE THAN THE FOLLOWING SPACE AVAILABLE.

I request the Municipal Demarcation Board to consider the following alternative proposals/ Ek versoek die Munisipale Afbakeningsraad om die volgende alternatiewe voorstelle te oorweeg:

Ward number/ Wyk nommer	The ward should comprise of the following voting districts (Provide voting district number and the number of voters in brackets e.g. VD1123456(1500)+VD345678(2500)=4000)/ Die wyk moet bestaan uit die volgende stemdistrikte: (Voorsien die stemdistriknommer en die getal geregistreerde kiesers as volg VD1123456(1500)+VD345678(2500)=4000)	Motivation /Motivering

I confirm that/ Ek bevestig dat:

- each cluster of voting districts form a contiguous ward/ die saamgevoegde stemdistrikte vorm 'n aaneenlopende wyk;
- the number of voters in each ward fall within the minimum and maximum of voters allowed per ward/ die getal kiesers in elke wyk is binne die minimum en maksimum getal wat per wyk toegelaat word;
- the proposed ward boundaries comply, in general, with the criteria/ die voorgestelde wyke voldoen in die algemeen aan die kriteria.

SIGNATURE

NAME AND SURNAME

DATE

IMPORTANT

Information

from Government Printing Works

Dear Valued Customers,

Government Printing Works has implemented rules for completing and submitting the electronic Adobe Forms when you, the customer, submits your notice request.

Please take note of these guidelines when completing your form.

GPW Business Rules

1. No hand written notices will be accepted for processing, this includes Adobe forms which have been completed by hand.
2. Notices can only be submitted in Adobe electronic form format to the email submission address submit.egazette@gpw.gov.za. This means that any notice submissions not on an Adobe electronic form that are submitted to this mailbox will be **rejected**. National or Provincial gazette notices, where the Z95 or Z95Prov must be an Adobe form but the notice content (body) will be an attachment.
3. Notices brought into GPW by "walk-in" customers on electronic media can only be submitted in Adobe electronic form format. This means that any notice submissions not on an Adobe electronic form that are submitted by the customer on electronic media will be **rejected**. National or Provincial gazette notices, where the Z95 or Z95Prov must be an Adobe form but the notice content (body) will be an attachment.
4. All customers who walk in to GPW that wish to submit a notice that is not on an electronic Adobe form will be routed to the Contact Centre where the customer will be taken through the completion of the form by a GPW representative. Where a customer walks into GPW with a stack of hard copy notices delivered by a messenger on behalf of a newspaper the messenger must be referred back to the sender as the submission does not adhere to the submission rules.
5. All notice submissions that do not comply with point 2 will be charged full price for the notice submission.
6. The current cut-off of all Gazette's remains unchanged for all channels. (Refer to the GPW website for submission deadlines – www.gpwonline.co.za)
7. Incorrectly completed forms and notices submitted in the wrong format will be rejected to the customer to be corrected and resubmitted. Assistance will be available through the Contact Centre should help be required when completing the forms. (012-748 6200 or email info.egazette@gpw.gov.za)
8. All re-submissions by customers will be subject to the above cut-off times.
9. All submissions and re-submissions that miss the cut-off will be rejected to the customer to be submitted with a new publication date.
10. Information on forms will be taken as the primary source of the notice to be published. Any instructions that are on the email body or covering letter that contradicts the notice form content will be ignored.

You are therefore advised that effective from **Monday, 18 May 2015** should you not comply with our new rules of engagement, all notice requests will be rejected by our new system.

Furthermore, the fax number **012- 748 6030** will also be **discontinued** from this date and customers will only be able to submit notice requests through the email address submit.egazette@gpw.gov.za.



eGazette



Printed by and obtainable from the Government Printer, Bosman Street, Private Bag X85, Pretoria, 0001.
 Contact Centre Tel: 012-748 6200. eMail: info.egazette@gpw.gov.za
 Also available at the Legal Advisory Services, **Province of the Eastern Cape**, Private Bag X0047, Bisho, 5605.
 Tel. (040) 635-0052.