



PROVINCE OF THE EASTERN CAPE
IPHONDO LEMPUMA KOLONI
PROVINSIE OOS-KAAP

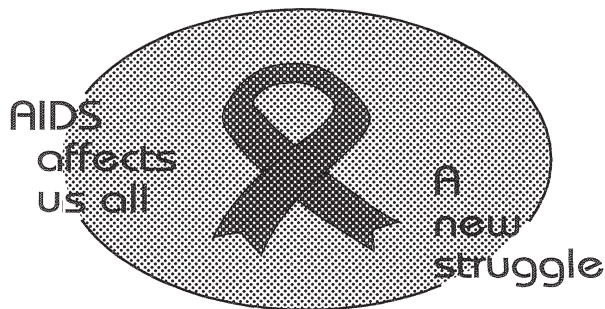
**Provincial Gazette
Igazethi Yephondo
Provinsiale Koerant
(Extraordinary)**

Vol. 22

BISHO/
KING WILLIAM'S TOWN, 22 JULY 2015

No. 3428

We all have the power to prevent AIDS



Prevention is the cure

**AIDS
HELPLINE**

0800 012 322

DEPARTMENT OF HEALTH

N.B. The Government Printing Works will not be held responsible for the quality of "Hard Copies" or "Electronic Files" submitted for publication purposes

ISSN 1682-4556



9 771682 455006

03428



IMPORTANT

Information

from Government Printing Works

Dear Valued Customers,

Government Printing Works has implemented rules for completing and submitting the electronic Adobe Forms when you, the customer, submits your notice request.

Please take note of these guidelines when completing your form.



GPW Business Rules

1. No hand written notices will be accepted for processing, this includes Adobe forms which have been completed by hand.
2. Notices can only be submitted in Adobe electronic form format to the email submission address submit.egazette@gpw.gov.za. This means that any notice submissions not on an Adobe electronic form that are submitted to this mailbox will be **rejected**. National or Provincial gazette notices, where the Z95 or Z95Prov must be an Adobe form but the notice content (body) will be an attachment.
3. Notices brought into GPW by "walk-in" customers on electronic media can only be submitted in Adobe electronic form format. This means that any notice submissions not on an Adobe electronic form that are submitted by the customer on electronic media will be **rejected**. National or Provincial gazette notices, where the Z95 or Z95Prov must be an Adobe form but the notice content (body) will be an attachment.
4. All customers who walk in to GPW that wish to submit a notice that is not on an electronic Adobe form will be routed to the Contact Centre where the customer will be taken through the completion of the form by a GPW representative. Where a customer walks into GPW with a stack of hard copy notices delivered by a messenger on behalf of a newspaper the messenger must be referred back to the sender as the submission does not adhere to the submission rules.
5. All notice submissions that do not comply with point 2 will be charged full price for the notice submission.
6. The current cut-off of all Gazette's remains unchanged for all channels. (Refer to the GPW website for submission deadlines – www.gpwonline.co.za)
7. Incorrectly completed forms and notices submitted in the wrong format will be rejected to the customer to be corrected and resubmitted. Assistance will be available through the Contact Centre should help be required when completing the forms. (012-748 6200 or email info.egazette@gpw.gov.za)
8. All re-submissions by customers will be subject to the above cut-off times.
9. All submissions and re-submissions that miss the cut-off will be rejected to the customer to be submitted with a new publication date.
10. Information on forms will be taken as the primary source of the notice to be published. Any instructions that are on the email body or covering letter that contradicts the notice form content will be ignored.

You are therefore advised that effective from **Monday, 18 May 2015** should you not comply with our new rules of engagement, all notice requests will be rejected by our new system.

Furthermore, the fax number **012- 748 6030** will also be **discontinued** from this date and customers will only be able to submit notice requests through the email address submit.egazette@gpw.gov.za.

DISCLAIMER:

Government Printing Works reserves the right to apply the 25% discount to all Legal and Liquor notices that comply with the business rules for notice submissions for publication in gazettes.

National, Provincial, Road Carrier Permits and Tender notices will pay the price as published in the Government Gazettes.

For any information, please contact the eGazette Contact Centre on 012-748 6200 or email info.egazette@gpw.gov.za

Table of Contents

<i>No.</i>		<i>Gazette No.</i>	<i>Page No.</i>
PROVINCIAL NOTICES • PROVINSIALE KENNISGEWINGS			
45	Local Government: Municipal Structures Act (117/1998): Municipal Demarcation Board: Delimitation of municipal wards: Ntabankulu Local Municipality (EC444)	3428	4
45	Wet Op Plaaslike Regering: Munisipale Strukture (117/1998): Munisipale Afbakeningsraad: Afbakening van munisipale wyke: Ntabankulu Local Municipality (EC444)	3428	5

PROVINCIAL NOTICES • PROVINSIALE KENNISGEWINGS

PROVINCIAL NOTICE 45 OF 2015**MUNICIPAL DEMARCATION BOARD : DELIMITATION OF
MUNICIPAL WARDS IN TERMS OF THE LOCAL
GOVERNMENT : MUNICIPAL STRUCTURES ACT, 1998.****Ntabankulu Local Municipality
EC444**

In terms of Item 5 (1) of Schedule 1 to the Local Government: Municipal Structures Act, 1998 (Act No. 117 of 1998) (the Act) the Municipal Demarcation Board hereby publishes its delimitation of wards for the above-mentioned municipality. Particulars of the delimitation are listed in the Schedule.

In terms of Item 5 (2) of Schedule 1 to the Act, any person aggrieved by the delimitation may, within 14 days of publication of this notice, submit objections in writing to:

The Municipal Demarcation Board
Private Bag X123
Centurion
0046

Fax: 086 5248643
Email: wards@demarcation.org.za

The attached form MDB 5 must please be used to object. The form is also available on www.demarcation.org.za

**MS JANE THUPANA
CHAIRPERSON: MUNICIPAL DEMARCATION BOARD****SCHEDULE**

In terms of section 18(3) of the Local Government: Municipal Structures Act, 1998 (Act 117 of 1998), the MEC responsible for local government has determined that the municipal council consists of 34 councillors.

After having consulted the Independent Electoral Commission, The Municipal Demarcation Board has delimited the municipality into 17 wards in terms of Schedule 1 of the Act.

The number of registered voters in each ward does not vary by more than fifteen percent from the norm. The norm was determined by dividing the total number of voters on the municipal segment of the national common voters roll, namely 61475 voters on 5 March 2014, by the number of wards in the municipality.

An overview map of the boundary of the municipality, with the boundaries of the wards within the municipality, and a map of each ward are attached. In case of a discrepancy between the map and this schedule, the map will prevail. The ward numbers, the voting districts and voting stations in each ward, and the number of voters are as follows:

PROVINSIALE KENNISGEWING 45 VAN 2015**MUNISIPALE AFBAKENINGSRAAD :
AFBAKENING VAN MUNISIPALE WYKE INGEVOLGE DIE WET OP
PLAASLIKE REGERING: MUNISIPALE STRUKTURE, 1998****Ntabankulu Local Municipality****EC444**

Ingevolge Item 5(1) van Bylae 1 van die Wet op Plaaslike Regering: Munisipale Strukture, 1998 (Wet No. 117 van 1998) (die Wet) publiseer die Munisipale Afbakeningsraad hiermee sy afbakening van wyke vir die bogenaaamde munisipaliteit. Besonderhede van die afbakening is vervat in die Bylae.

Ingevolge item 5(2) van Bylae 1 van die Wet, kan enige persoon wat gegrief is deur 'n afbakening binne 14 dae vanaf publikasie van hierdie kennisgewing skriftelike besware voorlê aan:

Die Munisipale Afbakeningsraad
Privaatsak X123
Centurion
0046

Faks: 086 5248643
E-pos: wards@demarcation.org.za

Die aangehegte vorm MDB5 moet asseblief gebruik word om beswaar aan te teken. Die vorm is ook beskikbaar op www.demarcation.org.za

**MS JANE THUPANA
VOORSITTER : MUNISIPALE AFBAKENINGSRAAD****BYLAE**

Ingevolge artikel 18(3) van die Wet op Plaaslike Regering: Munisipale Strukture, 1998 (Wet 117 van 1998) het die LUR vir plaaslike regering bepaal dat die munisipale raad bestaan uit 34 raadslede.

Na oorlegpleging met die Onafhanklike Verkiesingskommissie het die Munisipale Afbakeningsraad die munisipaliteit in 17 wyke afgebaken ingevolge Bylae 1 van die Wet.

Die getal geregistreerde kiesers in elke wyk, wyk nie meer as vyftien persent van die norm af nie. Die norm is bepaal deur die getal geregistreerde kiesers op die munisipale segment van die nasionale gemeenskaplike kieserslys, naamlik 61475 kiesers op 5 Maart 2014, deur die getal wyke in die munisipaliteit te deel.

'n Oorsigkaart van die munisipale grens met die grense van die wyke binne die munisipale grens, en 'n kaart van elke wyk, is aangeheg. Ingeval van 'n verskil tussen 'n kaart en hierdie bylae, sal die kaart geld.

Die wyknommers, die stemdistrikte en stemlokale in elke wyk, en die getal kiesers is as volg:

Ward 1 comprises of a total of 3507 registered voters.
Wyk 1 bestaan uit 'n totaal van 3507 geregistreerde kiesers.
 MIN VOTERS/KIESER 3074 NORM 3616 MAX VOTERS/KIESER 4158

VOTING DISTRICT No. STEMDISTRIK No.	VOTING STATION NAME STEMLOKAAL NAAM	NUMBER OF VOTERS GETAL KIESERS	SPLIT VD VERDEELDE SD
11820866	LUTHAMBEKO JUNIOR SECONDARY SCHOOL.	387	
11820035	MAWONGA HIGHER PRIMARY SCHOOL	315	
11820024	DUNGU JUNIOR SECONDARY SCHOOL	581	
11820013	NLANGANO JUNIOR SECONDARY SCHOOL	528	
11821227	ZAMUKULUNGISA SENIOR PRIMARY SCHOOL	329	
11821373	MADLALISA SENIOR PRIMARY SCHOOL	264	
11821384	BHAYI SENIOR PRIMARY SCHOOL	217	
11821418	VANE JUNIOR SECONDARY SCHOOL	386	
11820967	CANDULWANDLE JUNIOR PRIMARY SCHOOL	500	

Ward 2 comprises of a total of 3121 registered voters.
Wyk 2 bestaan uit 'n totaal van 3121 geregistreerde kiesers.
 MIN VOTERS/KIESER 3074 NORM 3616 MAX VOTERS/KIESER 4158

VOTING DISTRICT No. STEMDISTRIK No.	VOTING STATION NAME STEMLOKAAL NAAM	NUMBER OF VOTERS GETAL KIESERS	SPLIT VD VERDEELDE SD
11820956	NGUBELANGA JUNIOR SECONDARY SCHOOL	457	
11820170	MHLELENI J.S.S (TENT)	760	
11820080	DUMSI JUNIOR SECONDARY SCHOOL	816	
11820103	XOPHO JUNIOR SECONDARY SCHOOL	1088	

Ward 3 comprises of a total of 3128 registered voters.
Wyk 3 bestaan uit 'n totaal van 3128 geregistreerde kiesers.
 MIN VOTERS/KIESER 3074 NORM 3616 MAX VOTERS/KIESER 4158

VOTING DISTRICT No. STEMDISTRIK No.	VOTING STATION NAME STEMLOKAAL NAAM	NUMBER OF VOTERS GETAL KIESERS	SPLIT VD VERDEELDE SD
11820923	MNGQUMANGO SENIOR PRIMARY SCHOOL	323	
11821250	ZIMELE JUNIOR SECONDARY SCHOOL	329	
11820091	MATHOLE JUNIOR SECONDARY SCHOOL	537	
11820877	MANALENI JUNIOR SECONDARY SCHOOL.	270	
11820215	RAVENSROFT JUNIOR SECONDARY SCHOOL	890	
11820125	ZINYOSINI JUNIOR SECONDARY SCHOOL	779	

Ward 4 comprises of a total of 3160 registered voters.
Wyk 4 bestaan uit 'n totaal van 3160 geregistreerde kiesers.
 MIN VOTERS/KIESER 3074 NORM 3616 MAX VOTERS/KIESER 4158

VOTING DISTRICT No. STEMDISTRIK No.	VOTING STATION NAME STEMLOKAAL NAAM	NUMBER OF VOTERS GETAL KIESERS	SPLIT VD VERDEELDE SD
11820169	NOWALALA JUNIOR SECONDARY SCHOOL	933	
11820945	DUTCH REFORMED CHURCH	467	
11820934	NTSINTSANA JUNIOR SECONDARY SCHOOL.	504	
11820833	DABULAMANZI SENIOR PRIMARY SCHOOL	269	
11820822	KRWANTSANA J.S.S. (TENT)	426	
11820114	ISILINDINI JUNIOR SECONDARY SCHOOL	561	

Ward 5 comprises of a total of 4021 registered voters.
Wyk 5 bestaan uit 'n totaal van 4021 geregistreerde kiesers.
 MIN VOTERS/KIESER 3074 NORM 3616 MAX VOTERS/KIESER 4158

VOTING DISTRICT No. STEMDISTRIK No.	VOTING STATION NAME STEMLOKAAL NAAM	NUMBER OF VOTERS GETAL KIESERS	SPLIT VD VERDEELDE SD
11821340	NGOZI SENIOR PRIMARY SCHOOL	232	
11820248	COLA JUNIOR SECONDARY SCHOOL	337	
11820844	GABHENI SENIOR PRIMARY SCHOOL	175	
11820282	MATSHONA JUNIOR SECONDARY SCHOOL	671	
11821249	NQALO SENIOR PRIMARY SCHOOL	221	
11821238	GCINISIZWE SENIOR PRIMARY SCHOOL	422	
11821328	NTSIKAYEZWE SENIOR SECONDARY SCHOOL	418	
11820899	MHLONYANENI SENIOR PRIMARY SCHOOL	400	
11820271	NGCABHELA JUNIOR SECONDARY SCHOOL	346	
11820237	MQATYENI JUNIOR SECONDARY SCHOOL	257	
11820901	MAZAKHELE JUNIOR SECONDARY SCHOOL	220	
11820608	BLORWENI JUNIOR SECONDARY SCHOOL	322	

Ward 6 comprises of a total of 4017 registered voters.
Wyk 6 bestaan uit 'n totaal van 4017 geregistreerde kiesers.
 MIN VOTERS/KIESER 3074 NORM 3616 MAX VOTERS/KIESER 4158

VOTING DISTRICT No. STEMDISTRIK No.	VOTING STATION NAME STEMLOKAAL NAAM	NUMBER OF VOTERS GETAL KIESERS	SPLIT VD VERDEELDE SD
11820855	KRESTU	459	
11821317	DUMAKUDE JP SCHOOL	292	

11820158	XAKANI JUNIOR SECONDARY SCHOOL	756
11820147	DINWAYO JUNIOR SECONDARY SCHOOL	931
11820406	MTUKUKAZI JUNIOR SECONDARY SCHOOL	705
11820136	NDILE JUNIOR SECONDARY SCHOOL	460
11821216	NGCWAMANI [ZANOKHANYO] JUNIOR SECONDARY S	414

Ward 7 comprises of a total of 4032 registered voters.
Wyk 7 bestaan uit 'n totaal van 4032 geregistreerde kiesers.

MIN VOTERS/KIESER 3074 NORM 3616 MAX VOTERS/KIESER 4158

VOTING DISTRICT No. STEMDISTRIK No.	VOTING STATION NAME STEMLOKAAL NAAM	NUMBER OF VOTERS GETAL KIESERS	SPLIT VD VERDEELDE SD
11821171	MSUKENI SENIOR PRIMARY SCHOOL	287	
11821182	MGENI SENIOR SECONDARY SCHOOL	270	
11820260	MZWAKAZI JUNIOR SECONDARY SCHOOL	410	
11820305	LALASHE HPS	388	
11820350	LUDEKE JUNIOR SECONDARY SCHOOL	514	
11820361	BOMVINI JUNIOR SECONDARY SCHOOL	999	
11820372	MADWAKAZANE JUNIOR SECONDARY SCHOOL	474	
11820811	NYANDA DIKO JUNIOR SECONDARY SCHOOL	423	
11821407	DAMBENI SENIOR PRIMARY SCHOOL	267	

Ward 8 comprises of a total of 4037 registered voters.
Wyk 8 bestaan uit 'n totaal van 4037 geregistreerde kiesers.

MIN VOTERS/KIESER 3074 NORM 3616 MAX VOTERS/KIESER 4158

VOTING DISTRICT No. STEMDISTRIK No.	VOTING STATION NAME STEMLOKAAL NAAM	NUMBER OF VOTERS GETAL KIESERS	SPLIT VD VERDEELDE SD
11730013	TOWN HALL	1423	
11820293	NDAKENI JUNIOR SECONDARY SCHOOL	1080	
11820439	MAKHOSINI SENIOR PRIMARY SCHOOL	1102	
11820912	DALINDYEBO SENIOR PRIMARY SCHOOL	432	

Ward 9 comprises of a total of 3857 registered voters.
Wyk 9 bestaan uit 'n totaal van 3857 geregistreerde kiesers.

MIN VOTERS/KIESER 3074 NORM 3616 MAX VOTERS/KIESER 4158

VOTING DISTRICT No. STEMDISTRIK No.	VOTING STATION NAME STEMLOKAAL NAAM	NUMBER OF VOTERS GETAL KIESERS	SPLIT VD VERDEELDE SD
11820776	QIPHU JUNIOR SECONDARY SCHOOL.	251	
11820462	DAMBENI JUNIOR SECONDARY SCHOOL	764	

11820440	MABUDU JUNIOR SECONDARY SCHOOL	669
11820383	NDWANE JUNIOR SECONDARY SCHOOL	841
11820428	MBANGWENI JUNIOR SECONDARY SCHOOL	619
11821362	MFAZWE SENIOR SECONDARY SCHOOL	204
11821193	ZWELABANTU SENIOR PRIMARY SCHOOL	509

Ward 10 comprises of a total of 3654 registered voters.
Wyk 10 bestaan uit 'n totaal van 3654 geregistreerde kiesers.
 MIN VOTERS/KIESER 3074 NORM 3616 MAX VOTERS/KIESER 4158

VOTING DISTRICT No. STEMDISTRIK No.	VOTING STATION NAME STEMLOKAAL NAAM	NUMBER OF VOTERS GETAL KIESERS	SPLIT VD VERDEELDE SD
11821283	NDAKENI PRE-SCHOOL	428	
11821339	BUNTSHENTSHE SENIOR PRIMARY SCHOOL	81	
11820316	CABA JUNIOR SECONDARY SCHOOL	599	
11820327	ZOKO JUNIOR SECONDARY SCHOOL	702	
11820349	LUBALA JUNIOR SECONDARY SCHOOL	226	
11821160	PHUMZILE PRE-SCHOOL	166	
11820484	KHETHANI J.S.S	773	
11820552	DUMELA JUNIOR SECONDARY SCHOOL	183	
11821025	MZIMHLOPHE JUNIOR PRIMARY SCHOOL	131	
11821036	PHUNGULELWENI SENIOR PRIMARY SCHOOL.	365	

Ward 11 comprises of a total of 3455 registered voters.
Wyk 11 bestaan uit 'n totaal van 3455 geregistreerde kiesers.
 MIN VOTERS/KIESER 3074 NORM 3616 MAX VOTERS/KIESER 4158

VOTING DISTRICT No. STEMDISTRIK No.	VOTING STATION NAME STEMLOKAAL NAAM	NUMBER OF VOTERS GETAL KIESERS	SPLIT VD VERDEELDE SD
11821014	MPINDWENI JUNIOR SECONDARY SCHOOL	267	
11820046	SAPHUKANDUKU JUNIOR SECONDARY SCHOOL	443	
11821351	LUFABA SENIOR PRIMARY SCHOOL	323	
11821003	SIYAYA JUNIOR SECONDARY SCHOOL	224	
11821047	BAGQOZINI JUNIOR SECONDARY SCHOOL	208	
11820765	VENI SENIOR PRIMARY SCHOOL	89	
11820518	MJILA JUNIOR SECONDARY SCHOOL	506	
11820529	TLADI JUNIOR SECONDARY SCHOOL	433	
11820990	LUGALAKAXA SENIOR PRIMARY SCHOOL	215	
11820620	CACADU JUNIOR SECONDARY SCHOOL	416	

11821148	SOLOMON GAGANE SENIOR PRIMARY SCHOOL	361
11820417	NGQANI JUNIOR SECONDARY SCHOOL	444
11820800	MZAWUTHETHI SENIOR PRIMARY SCHOOL	207
11821261	VULINDLELA SENIOR PRIMARY SCHOOL	242
11820732	ROMAN CATHOLIC CHURCH	314

Ward 15 comprises of a total of 3672 registered voters.
Wyk 15 bestaan uit 'n totaal van 3672 geregistreerde kiesers.

MIN VOTERS/KIESER 3074 NORM 3616 MAX VOTERS/KIESER 4158

VOTING DISTRICT No. STEMDISTRIK No.	VOTING STATION NAME STEMLOKAAL NAAM	NUMBER OF VOTERS GETAL KIESERS	SPLIT VD VERDEELDE SD
11810809	THEMBILE JUNIOR SECONDARY SCHOOL	263	
11810045	CETSHEJUNIOR SECONDARY SCHOOL	566	
11810023	WAYO JUNIOR SECONDARY SCHOOL	529	
11810067	MABOFU JUNIOR SECONDARY SCHOOL	565	
11810078	MAZENI JUNIOR SECONDARY SCHOOL	423	
11810786	DAKILE SENIOR PRIMARY SCHOOL	565	
11810056	MFUNDISWENI COLLEGE	761	

Ward 16 comprises of a total of 3369 registered voters.
Wyk 16 bestaan uit 'n totaal van 3369 geregistreerde kiesers.

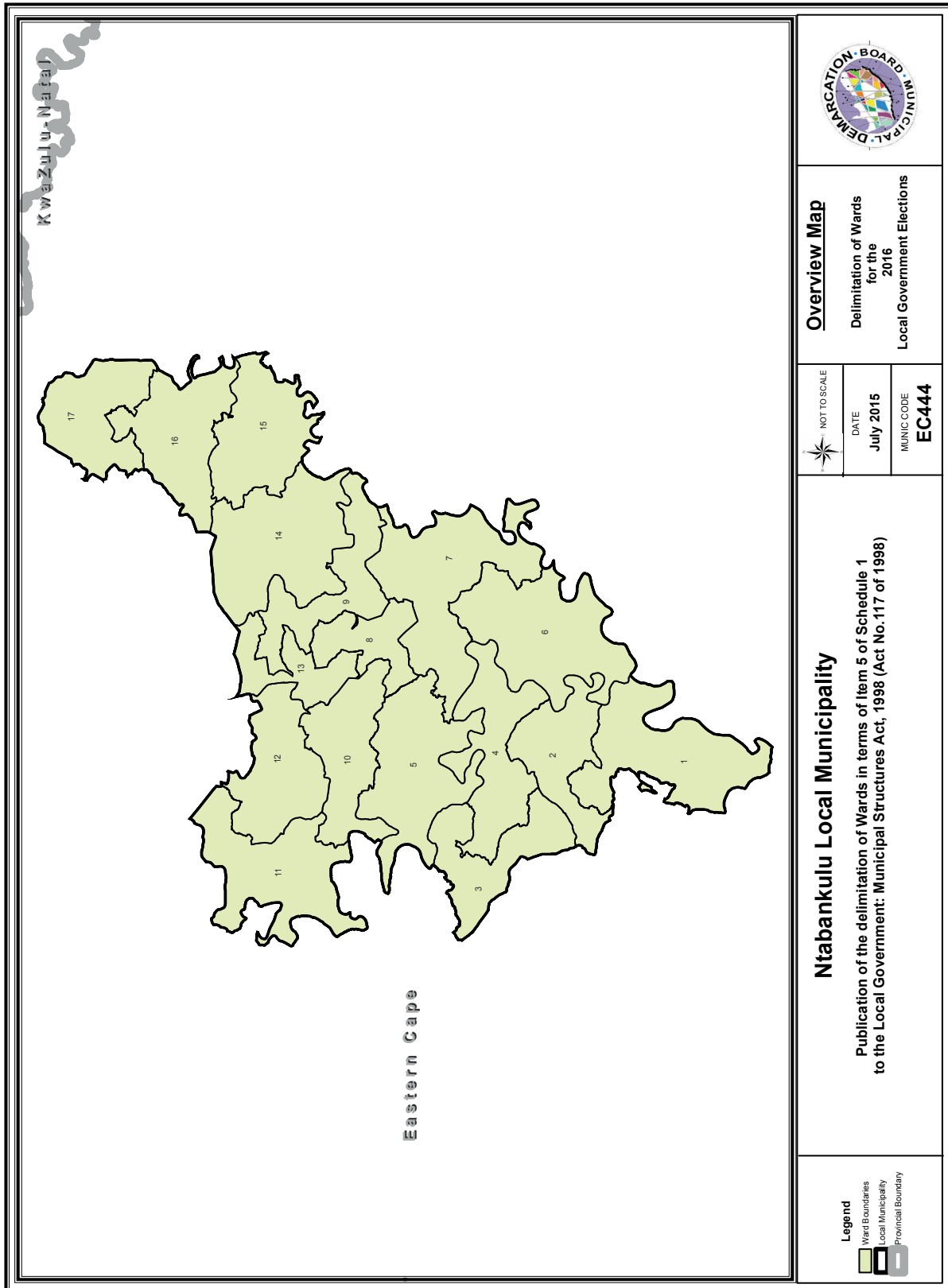
MIN VOTERS/KIESER 3074 NORM 3616 MAX VOTERS/KIESER 4158

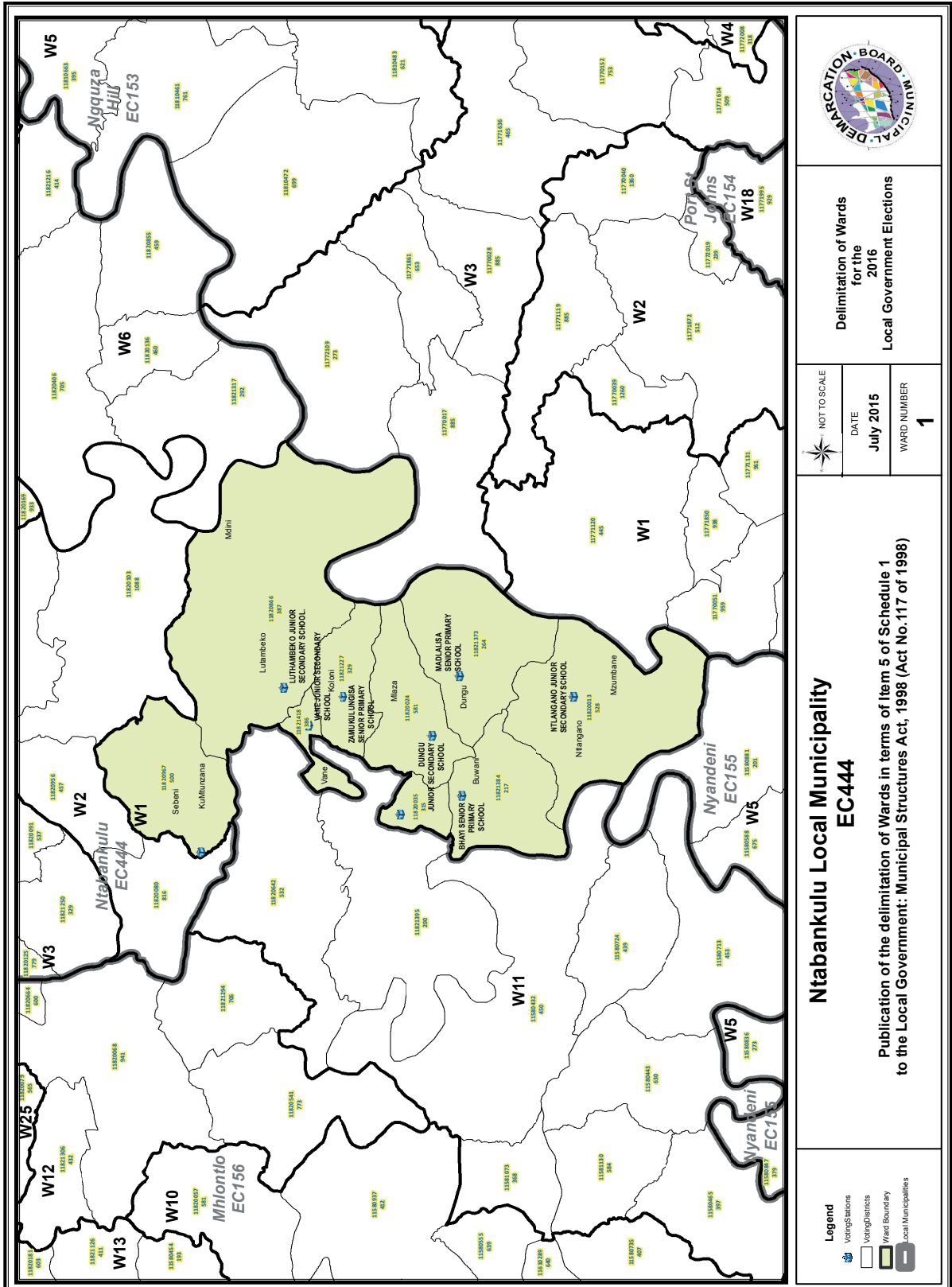
VOTING DISTRICT No. STEMDISTRIK No.	VOTING STATION NAME STEMLOKAAL NAAM	NUMBER OF VOTERS GETAL KIESERS	SPLIT VD VERDEELDE SD
11790200	DEDELO JUNIOR SECONDARY SCHOOL	287	
11790457	KWANTULI (TENT)	323	
11811237	DLEPHU JUNIOR SECONDARY SCHOOL	282	
11790480	IBISI PRE-SCHOOL	159	
11810775	BUHLAMBO JUNIOR SECONDARY SCHOOL	401	
11790468	PRESBYTERIAN CHURCH	319	
11790514	LUNCEDWENI JUNIOR SECONDARY SCHOOL	362	
11790165	MBHONGWENI JUNIOR SECONDARY SCHOOL	487	
11790682	MKHOMANZI JUNIOR PRIMARY SCHOOL	233	
11810034	LUNZWANA JUNIOR SECONDARY SCHOOL	516	

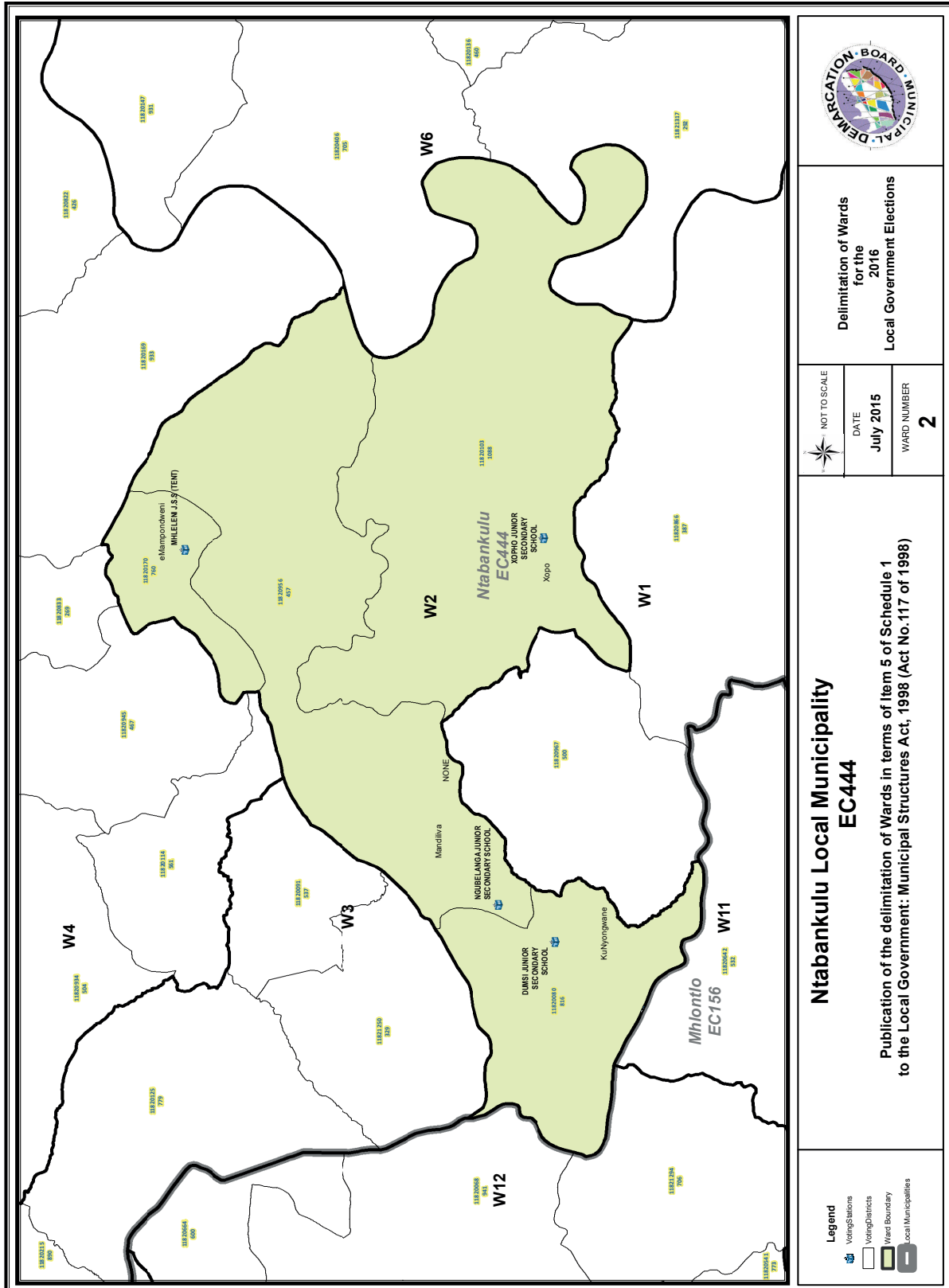
Ward 17 comprises of a total of 4017 registered voters.
Wyk 17 bestaan uit 'n totaal van 4017 geregistreerde kiesers.

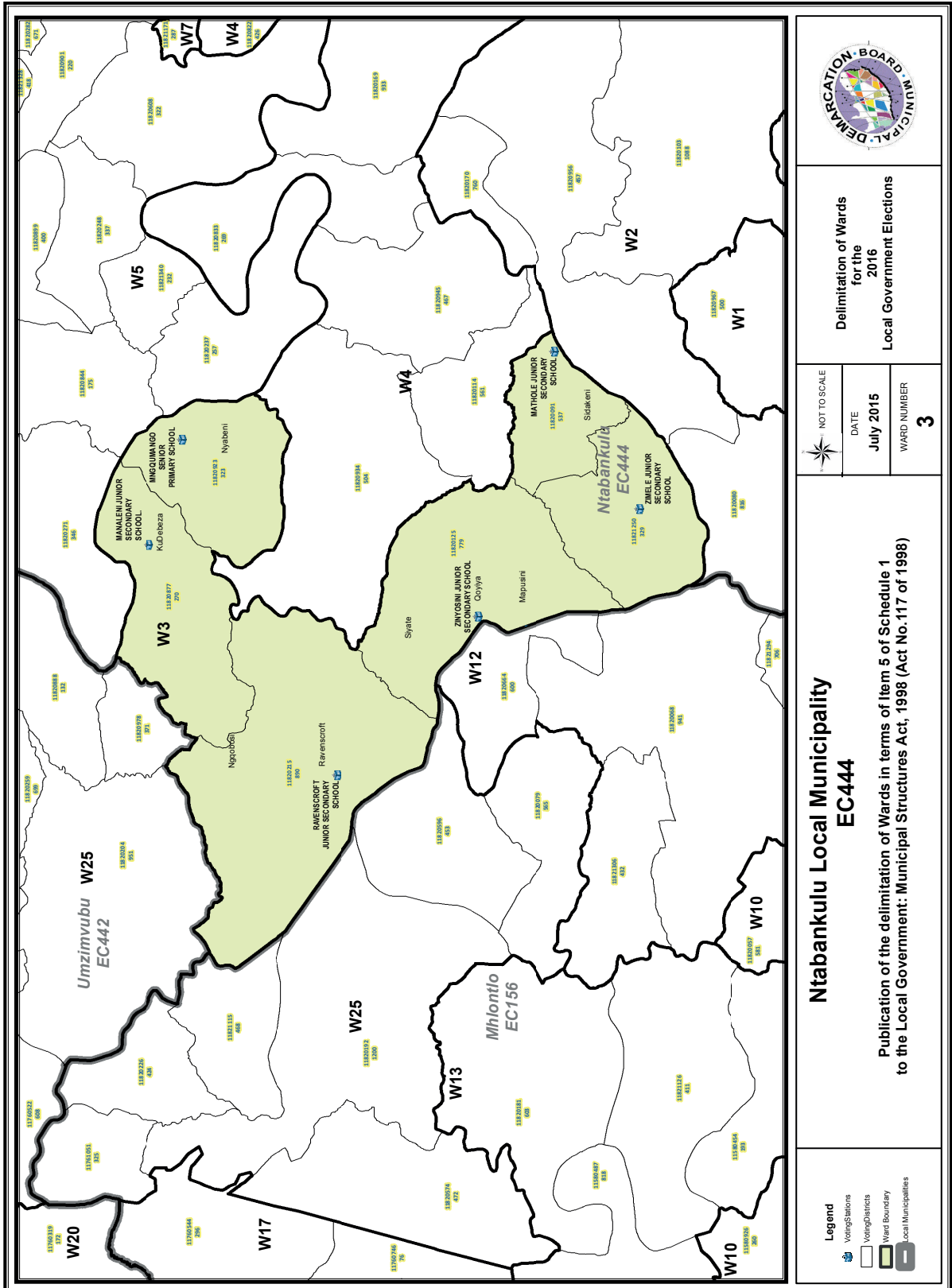
MIN VOTERS/KIESER 3074 NORM 3616 MAX VOTERS/KIESER 4158

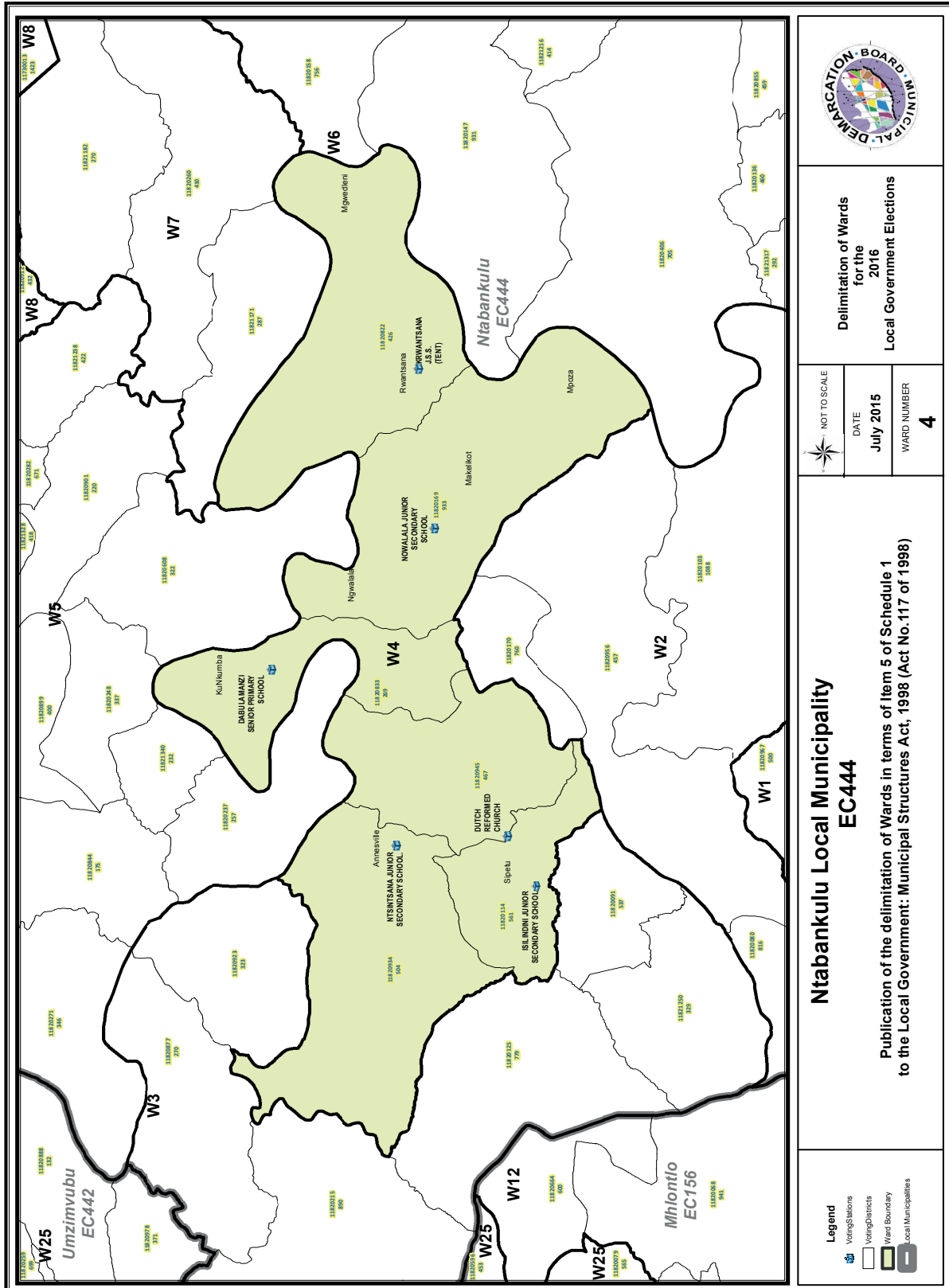
VOTING DISTRICT No. STEMDISTRIK No.	VOTING STATION NAME STEMLOKAAL NAAM	NUMBER OF VOTERS GETAL KIESERS	SPLIT VD VERDEELDE SD
11790491	JAKUJA JUNIOR SECONDARY SCHOOL	339	
11790299	SIPETU JUNIOR SECONDARY SCHOOL	612	
11790503	MALIWA JUNIOR SECONDARY SCHOOL	173	
11790479	ZOLA SENIOR PRIMARY SCHOOL	407	
11790435	LOKWE JUNIOR SECONDARY SCHOOL	576	
11790378	NTSHENTSHE JUNIOR SECONDARY SCHOOL	437	
11790244	GXWALENI JUNIOR SECONDARY SCHOOL	610	
11790233	MANZANA JUNIOR SECONDARY SCHOOL	585	
11790424	ZANOKHANYO JUNIOR SECONDARY SCHOOL	278	

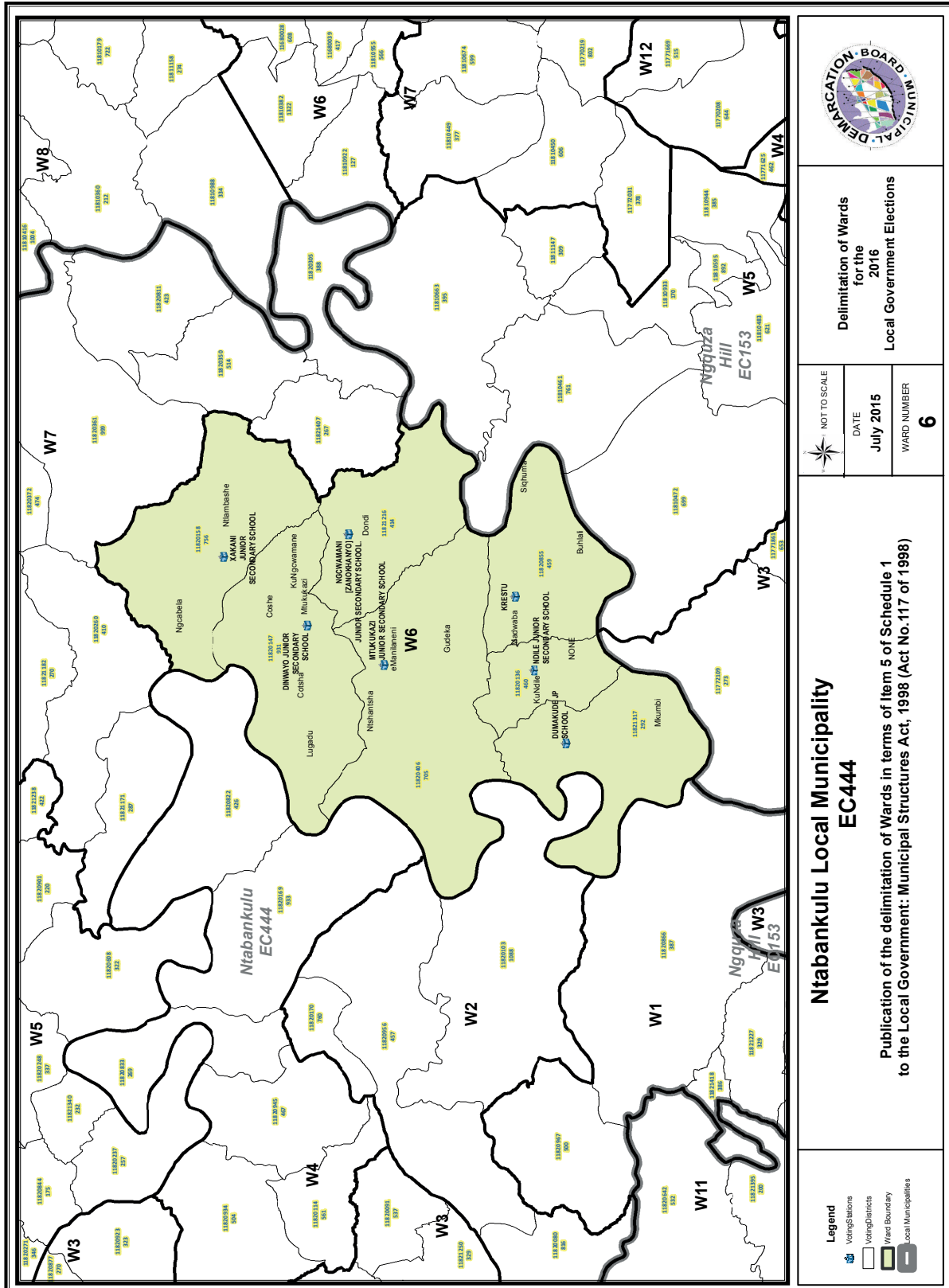


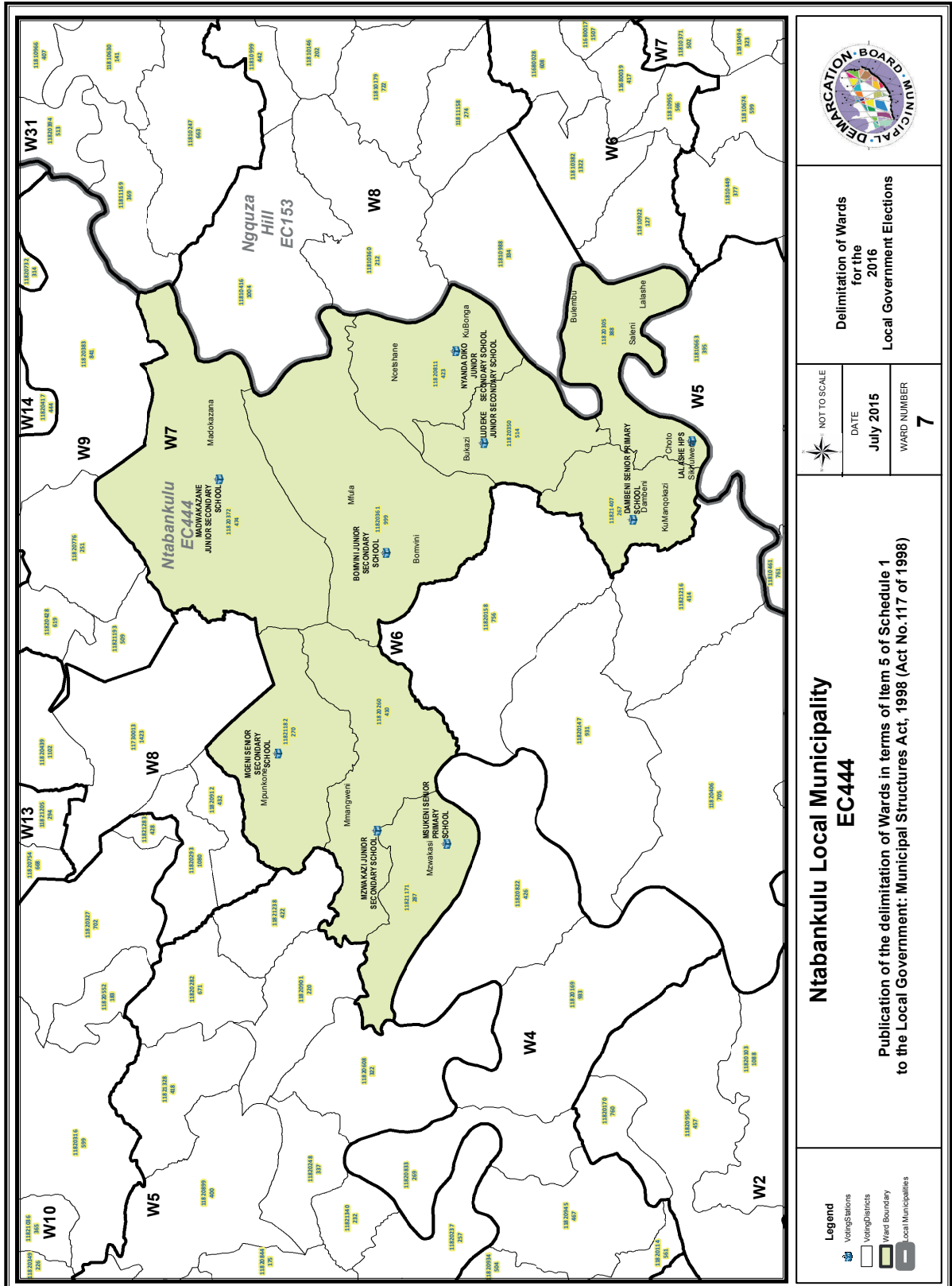


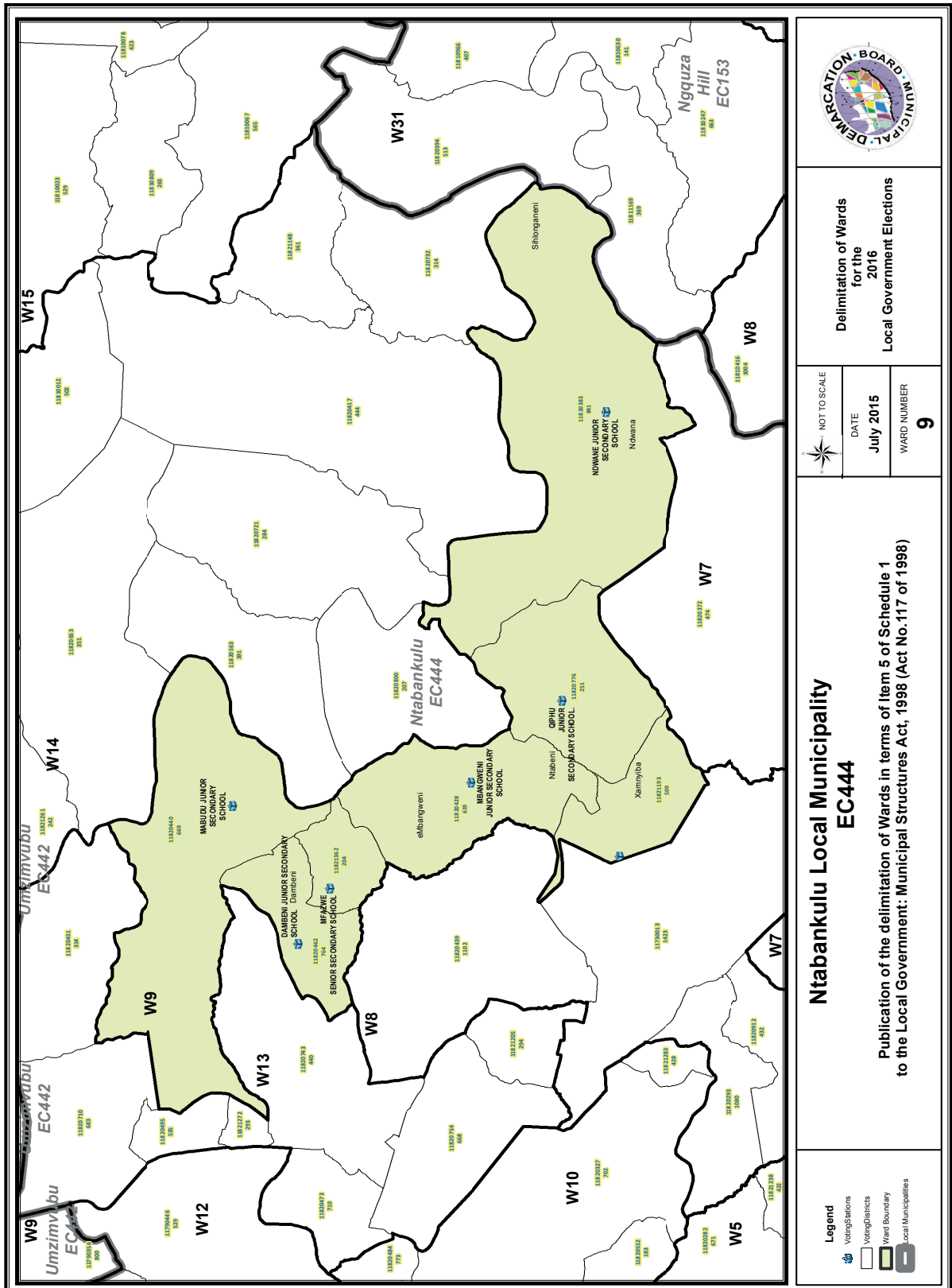














Demarcation Board Municipal

Delimitation of Wards for the 2016 Local Government Elections

NOT TO SCALE

DATE: July 2015

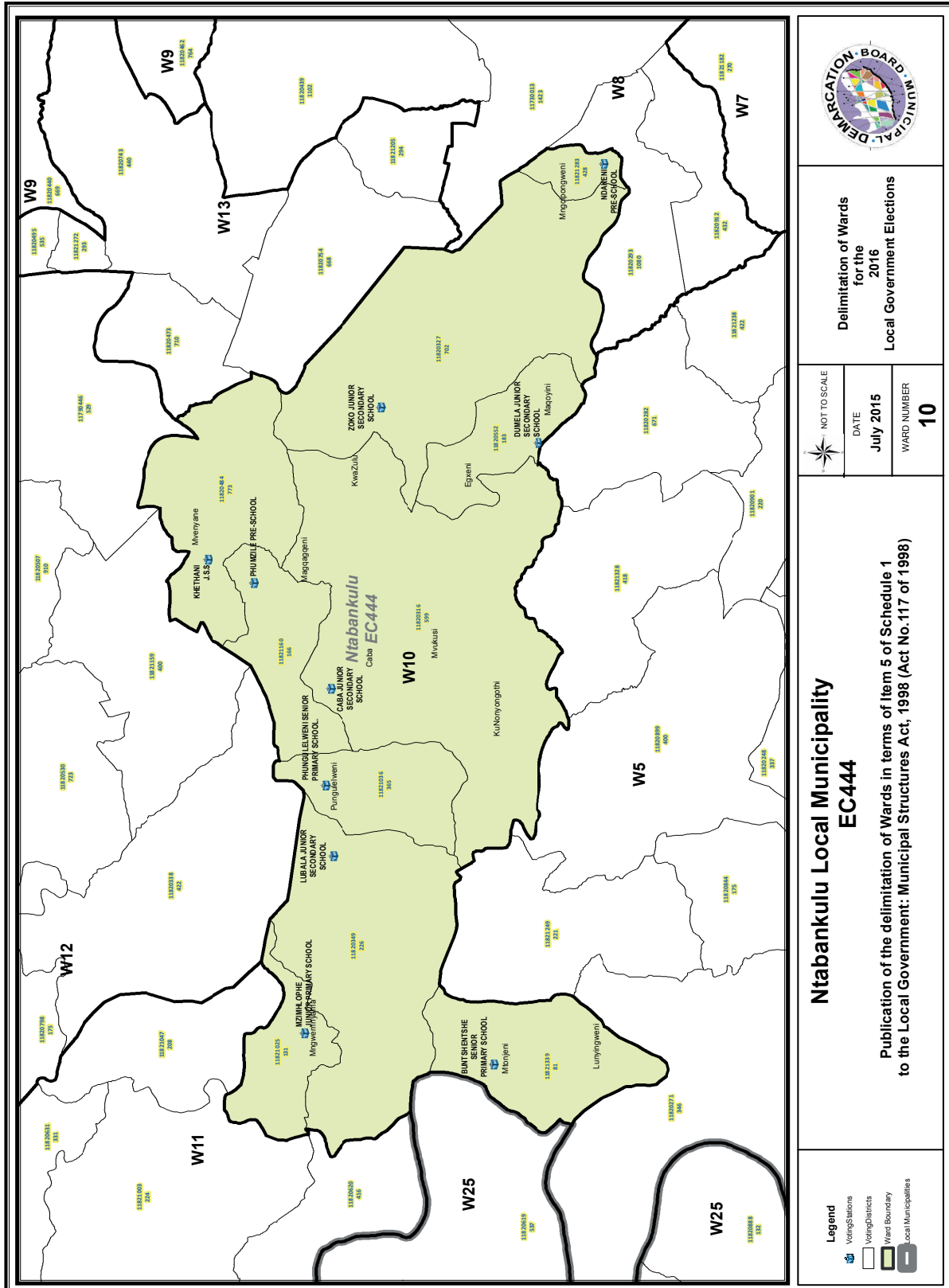
WARD NUMBER: 9

Ntabankulu Local Municipality EC444

Publication of the delimitation of Wards in terms of Item 5 of Schedule 1 to the Local Government: Municipal Structures Act, 1998 (Act No. 117 of 1998)

Legend

- Voting Stations
- Voting Districts
- Ward Boundary
- Local Municipalities



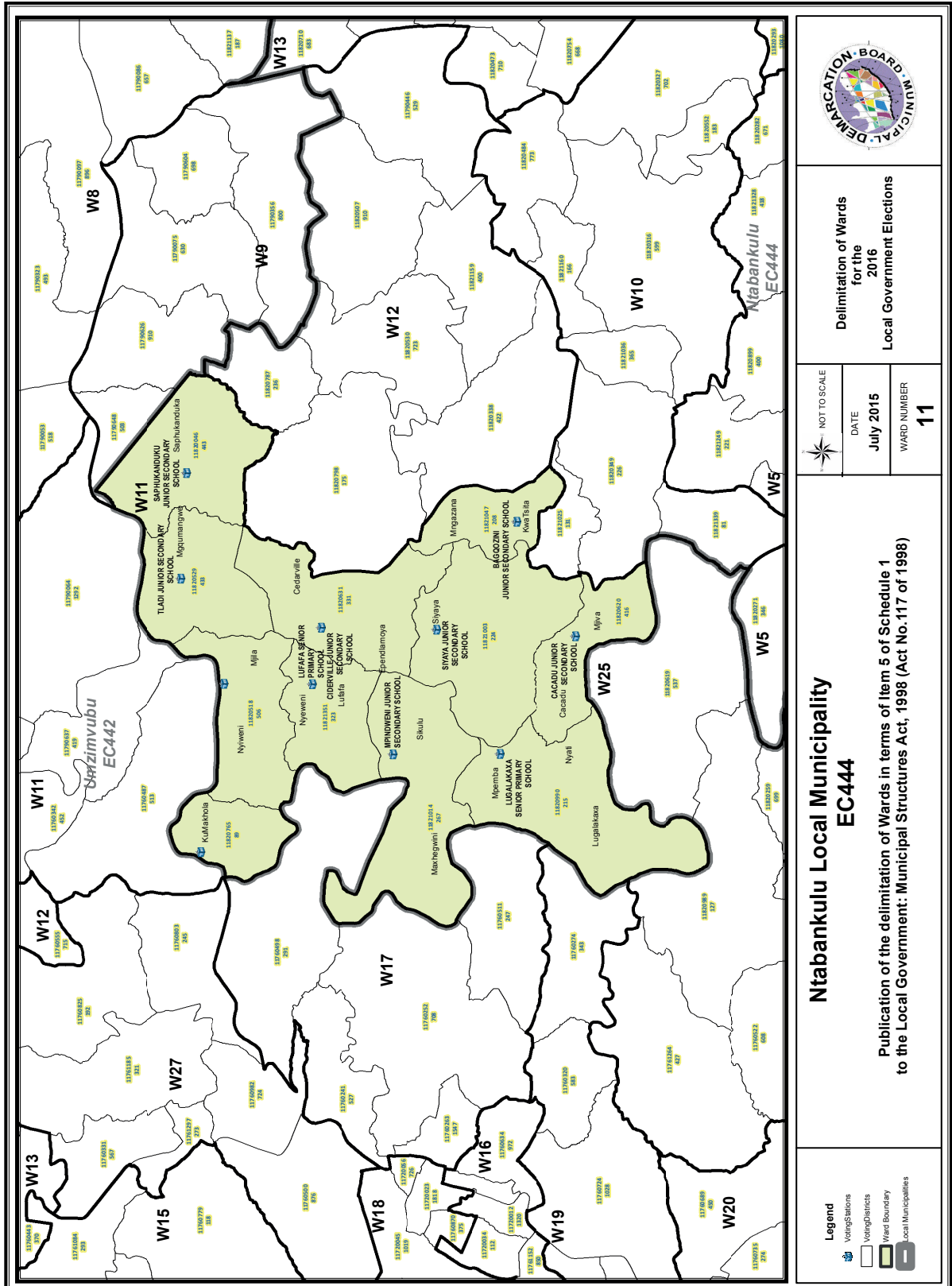
Delimitation of Wards
for the
2016
Local Government Elections

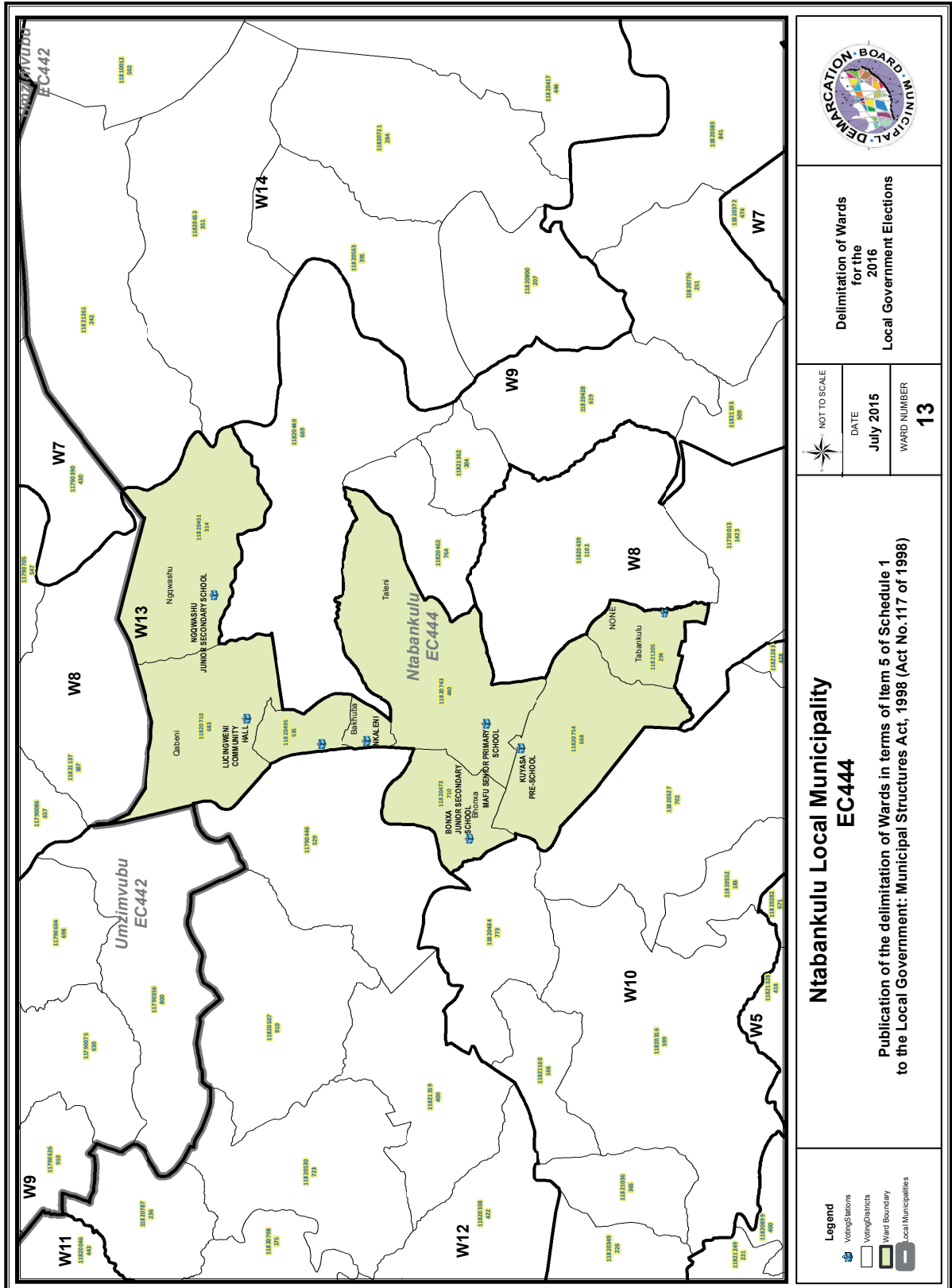
NOT TO SCALE
DATE
July 2015
WARD NUMBER
10

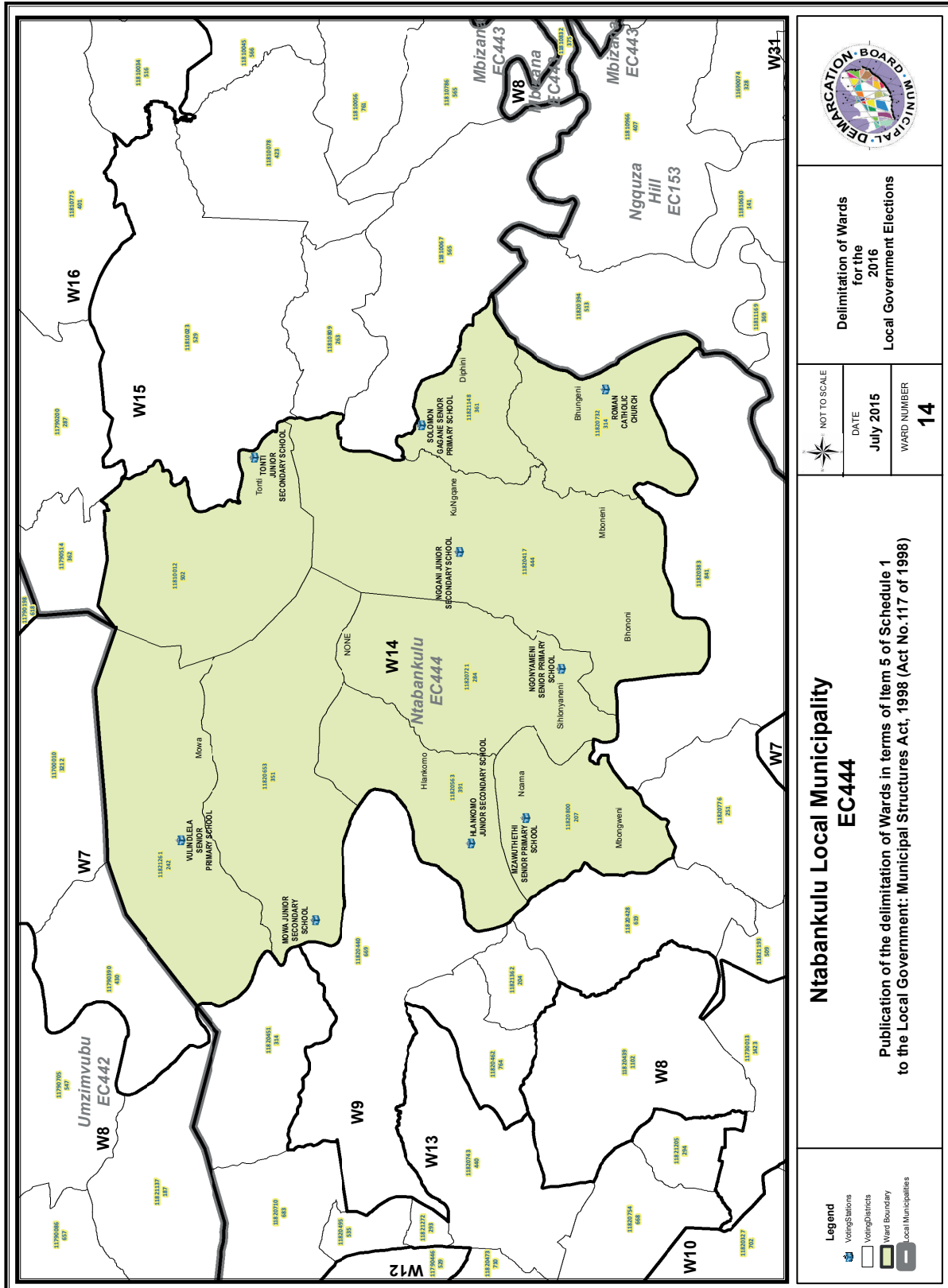
**Ntabankulu Local Municipality
EC444**

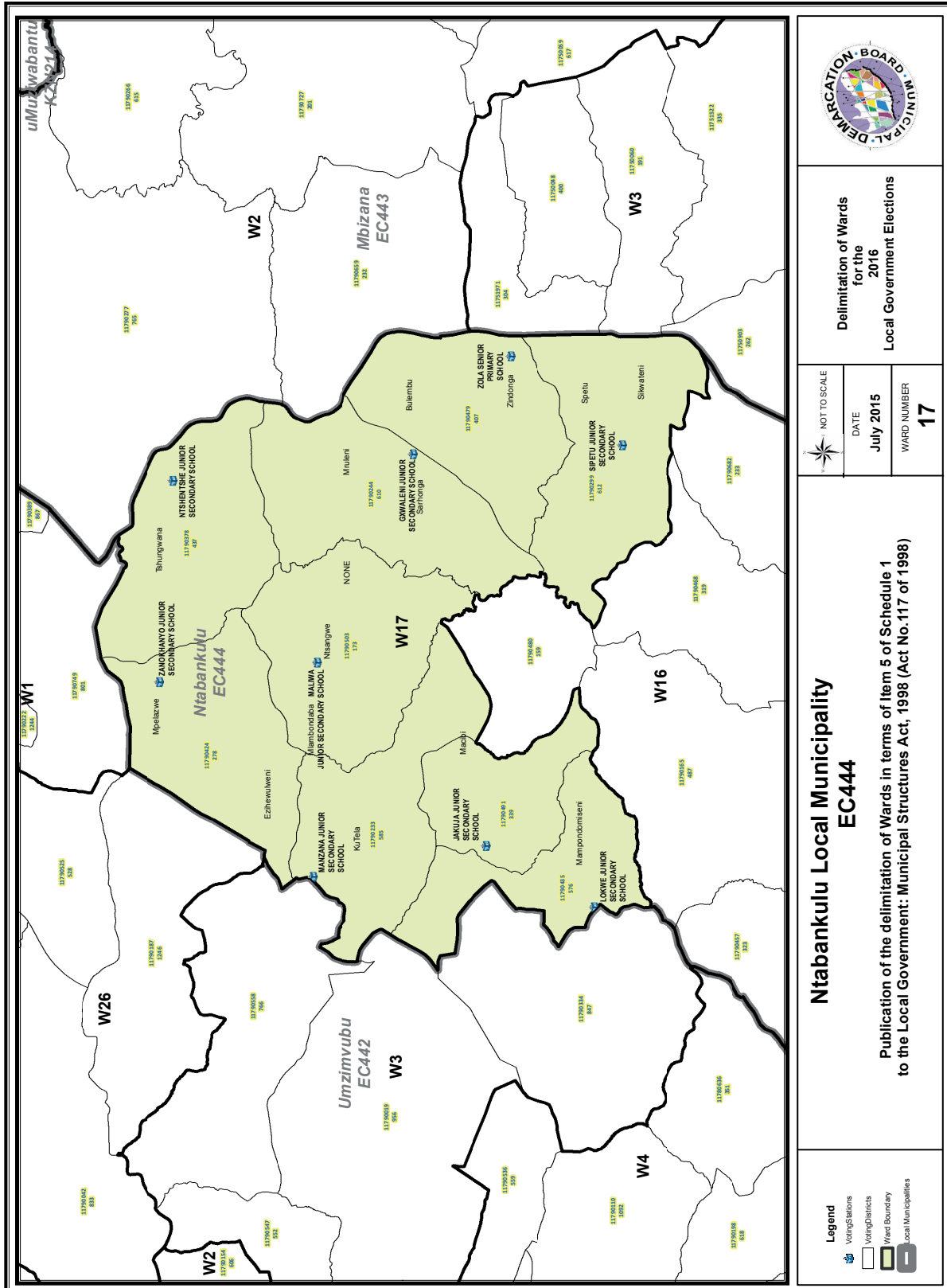
Publication of the delimitation of Wards in terms of Item 5 of Schedule 1
to the Local Government: Municipal Structures Act, 1998 (Act No.117 of 1998)

- Legend**
- Voting Stations
 - Voting Districts
 - Ward Boundary
 - Local Municipalities









FORM/VORM MDB5

WARD DELIMITATION/

WYKSAFBAKENING

**OBJECTION IN TERMS OF ITEM 5(2) OF SCHEDULE 1 TO THE LOCAL GOVERNMENT:
MUNICIPAL STRUCTURES ACT, 1998**

**BESWAAR INGEVOLGE ITEM 5(2) VAN BYLAE 1 VAN DIE WET OP PLAASLIKE REGERING:
MUNISIPALE STRUKTURE, 1998**

Name of municipality/ Naam van Munisipaliteit :.....

Code/Kode :.....

Name of aggrieved person/institution/Naam van beswaarde persoon/instelling :

.....

Contact person in case of an institution/ Kontak persoon in geval van 'n instelling:

.....

Address/Adres:.....

Tel. number/ Tel. nommer:.....Cell number/ Selfoonnommer:

Email address:.....

PLEASE USE ADDITIONAL PAGE SHOULD THE ALTERNATIVE PROPOSALS BE MORE THAN THE FOLLOWING SPACE AVAILABLE.

I request the Municipal Demarcation Board to consider the following alternative proposals/ Ek versoek die Munisipale Afbakeningsraad om die volgende alternatiewe voorstelle te oorweeg:

Ward number/ Wyk nommer	The ward should comprise of the following voting districts (Provide voting district number and the number of voters in brackets e.g. VD1123456(1500)+VD345678(2500)=4000)/ Die wyk moet bestaan uit die volgende stemdistrikte: (Voorsien die stemdistriknommer en die getal geregistreerde kiesers as volg VD1123456(1500)+VD345678(2500)=4000)	Motivation /Motivering

I confirm that/ Ek bevestig dat:

- each cluster of voting districts form a contiguous ward/ die saamgevoegde stemdistrikte vorm 'n aaneenlopende wyk;
- the number of voters in each ward fall within the minimum and maximum of voters allowed per ward/ die getal kiesers in elke wyk is binne die minimum en maksimum getal wat per wyk toegelaat word;
- the proposed ward boundaries comply, in general, with the criteria/ die voorgestelde wyke voldoen in die algemeen aan die kriteria.

SIGNATURE

NAME AND SURNAME

DATE

IMPORTANT

Information

from Government Printing Works

Dear Valued Customers,

Government Printing Works has implemented rules for completing and submitting the electronic Adobe Forms when you, the customer, submits your notice request.

Please take note of these guidelines when completing your form.

GPW Business Rules

1. No hand written notices will be accepted for processing, this includes Adobe forms which have been completed by hand.
2. Notices can only be submitted in Adobe electronic form format to the email submission address submit.egazette@gpw.gov.za. This means that any notice submissions not on an Adobe electronic form that are submitted to this mailbox will be **rejected**. National or Provincial gazette notices, where the Z95 or Z95Prov must be an Adobe form but the notice content (body) will be an attachment.
3. Notices brought into GPW by "walk-in" customers on electronic media can only be submitted in Adobe electronic form format. This means that any notice submissions not on an Adobe electronic form that are submitted by the customer on electronic media will be **rejected**. National or Provincial gazette notices, where the Z95 or Z95Prov must be an Adobe form but the notice content (body) will be an attachment.
4. All customers who walk in to GPW that wish to submit a notice that is not on an electronic Adobe form will be routed to the Contact Centre where the customer will be taken through the completion of the form by a GPW representative. Where a customer walks into GPW with a stack of hard copy notices delivered by a messenger on behalf of a newspaper the messenger must be referred back to the sender as the submission does not adhere to the submission rules.
5. All notice submissions that do not comply with point 2 will be charged full price for the notice submission.
6. The current cut-off of all Gazette's remains unchanged for all channels. (Refer to the GPW website for submission deadlines – www.gpwonline.co.za)
7. Incorrectly completed forms and notices submitted in the wrong format will be rejected to the customer to be corrected and resubmitted. Assistance will be available through the Contact Centre should help be required when completing the forms. (012-748 6200 or email info.egazette@gpw.gov.za)
8. All re-submissions by customers will be subject to the above cut-off times.
9. All submissions and re-submissions that miss the cut-off will be rejected to the customer to be submitted with a new publication date.
10. Information on forms will be taken as the primary source of the notice to be published. Any instructions that are on the email body or covering letter that contradicts the notice form content will be ignored.

You are therefore advised that effective from **Monday, 18 May 2015** should you not comply with our new rules of engagement, all notice requests will be rejected by our new system.

Furthermore, the fax number **012- 748 6030** will also be **discontinued** from this date and customers will only be able to submit notice requests through the email address submit.egazette@gpw.gov.za.



Printed by and obtainable from the Government Printer, Bosman Street, Private Bag X85, Pretoria, 0001.
 Contact Centre Tel: 012-748 6200. eMail: info.egazette@gpw.gov.za
 Also available at the Legal Advisory Services, **Province of the Eastern Cape**, Private Bag X0047, Bisho, 5605.
 Tel. (040) 635-0052.