



PROVINCE OF THE EASTERN CAPE  
IPHONDO LEMPUMA KOLONI  
PROVINSIE OOS-KAAP

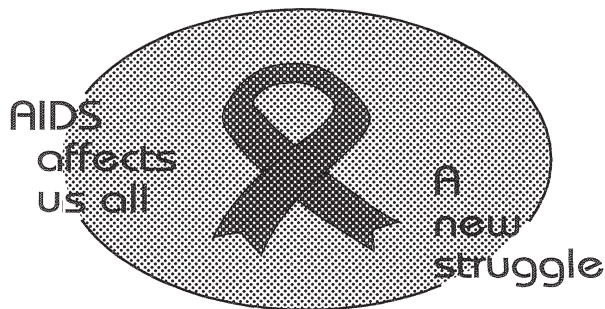
**Provincial Gazette  
Igazethi Yephondo  
Provinsiale Koerant  
(Extraordinary)**

Vol. 22

BISHO/  
KING WILLIAM'S TOWN, 22 JULY 2015

No. 3430

**We all have the power to prevent AIDS**



**AIDS  
HELPLINE**

**0800 012 322**

DEPARTMENT OF HEALTH

**Prevention is the cure**

*N.B. The Government Printing Works will not be held responsible for the quality of "Hard Copies" or "Electronic Files" submitted for publication purposes*

ISSN 1682-4556



9 771682 455006

03430



# IMPORTANT

## Information

### from Government Printing Works

Dear Valued Customers,

Government Printing Works has implemented rules for completing and submitting the electronic Adobe Forms when you, the customer, submits your notice request.

Please take note of these guidelines when completing your form.



#### GPW Business Rules

1. No hand written notices will be accepted for processing, this includes Adobe forms which have been completed by hand.
2. Notices can only be submitted in Adobe electronic form format to the email submission address [submit.egazette@gpw.gov.za](mailto:submit.egazette@gpw.gov.za). This means that any notice submissions not on an Adobe electronic form that are submitted to this mailbox will be **rejected**. National or Provincial gazette notices, where the Z95 or Z95Prov must be an Adobe form but the notice content (body) will be an attachment.
3. Notices brought into GPW by "walk-in" customers on electronic media can only be submitted in Adobe electronic form format. This means that any notice submissions not on an Adobe electronic form that are submitted by the customer on electronic media will be **rejected**. National or Provincial gazette notices, where the Z95 or Z95Prov must be an Adobe form but the notice content (body) will be an attachment.
4. All customers who walk in to GPW that wish to submit a notice that is not on an electronic Adobe form will be routed to the Contact Centre where the customer will be taken through the completion of the form by a GPW representative. Where a customer walks into GPW with a stack of hard copy notices delivered by a messenger on behalf of a newspaper the messenger must be referred back to the sender as the submission does not adhere to the submission rules.
5. All notice submissions that do not comply with point 2 will be charged full price for the notice submission.
6. The current cut-off of all Gazette's remains unchanged for all channels. (Refer to the GPW website for submission deadlines – [www.gpwonline.co.za](http://www.gpwonline.co.za))
7. Incorrectly completed forms and notices submitted in the wrong format will be rejected to the customer to be corrected and resubmitted. Assistance will be available through the Contact Centre should help be required when completing the forms. (012-748 6200 or email [info.egazette@gpw.gov.za](mailto:info.egazette@gpw.gov.za))
8. All re-submissions by customers will be subject to the above cut-off times.
9. All submissions and re-submissions that miss the cut-off will be rejected to the customer to be submitted with a new publication date.
10. Information on forms will be taken as the primary source of the notice to be published. Any instructions that are on the email body or covering letter that contradicts the notice form content will be ignored.

You are therefore advised that effective from **Monday, 18 May 2015** should you not comply with our new rules of engagement, all notice requests will be rejected by our new system.

Furthermore, the fax number **012- 748 6030** will also be **discontinued** from this date and customers will only be able to submit notice requests through the email address [submit.egazette@gpw.gov.za](mailto:submit.egazette@gpw.gov.za).

### DISCLAIMER:

Government Printing Works reserves the right to apply the 25% discount to all Legal and Liquor notices that comply with the business rules for notice submissions for publication in gazettes.

National, Provincial, Road Carrier Permits and Tender notices will pay the price as published in the Government Gazettes.

For any information, please contact the eGazette Contact Centre on 012-748 6200 or email [info.egazette@gpw.gov.za](mailto:info.egazette@gpw.gov.za)

### Table of Contents

<i>No.</i>		<i>Gazette No.</i>	<i>Page No.</i>
<b>PROVINCIAL NOTICES • PROVINSIALE KENNISGEWINGS</b>			
40	Local Government: Municipal Structures Act (117/1998): Municipal Demarcation Board: Delimitation of municipal wards: Matatiele Local Municipality (EC441).....	3430	4
40	Wet Op Plaaslike Regering: Munisipale Strukture (117/1998): Munisipale Afbakeningsraad: Afbakening van munisipale wyke: Matatiele Local Municipality (EC441).....	3430	5

---

**PROVINCIAL NOTICES • PROVINSIALE KENNISGEWINGS**

---

**PROVINCIAL NOTICE 40 OF 2015****MUNICIPAL DEMARCATION BOARD : DELIMITATION OF  
MUNICIPAL WARDS IN TERMS OF THE LOCAL  
GOVERNMENT : MUNICIPAL STRUCTURES ACT, 1998.****Matatiele Local Municipality  
EC441**

In terms of Item 5 (1) of Schedule 1 to the Local Government: Municipal Structures Act, 1998 (Act No. 117 of 1998) (the Act) the Municipal Demarcation Board hereby publishes its delimitation of wards for the above-mentioned municipality. Particulars of the delimitation are listed in the Schedule.

In terms of Item 5 (2) of Schedule 1 to the Act, any person aggrieved by the delimitation may, within 14 days of publication of this notice, submit objections in writing to:

The Municipal Demarcation Board  
Private Bag X123  
Centurion  
0046

Fax: 086 5248643  
Email: wards@demarcation.org.za

The attached form MDB 5 must please be used to object. The form is also available on [www.demarcation.org.za](http://www.demarcation.org.za)

**MS JANE THUPANA  
CHAIRPERSON: MUNICIPAL DEMARCATION BOARD****SCHEDULE**

In terms of section 18(3) of the Local Government: Municipal Structures Act, 1998 ( Act 117 of 1998), the MEC responsible for local government has determined that the municipal council consists of 51 councillors.

After having consulted the Independent Electoral Commission, The Municipal Demarcation Board has delimited the municipality into 26 wards in terms of Schedule 1 of the Act.

The number of registered voters in each ward does not vary by more than fifteen percent from the norm. The norm was determined by dividing the total number of voters on the municipal segment of the national common voters roll, namely 93738 voters on 5 March 2014, by the number of wards in the municipality.

An overview map of the boundary of the municipality, with the boundaries of the wards within the municipality, and a map of each ward are attached. In case of a discrepancy between the map and this schedule, the map will prevail. The ward numbers, the voting districts and voting stations in each ward, and the number of voters are as follows:

**PROVINSIALE KENNISGEWING 40 VAN 2015****MUNISIPALE AFBAKENINGSRAAD :  
AFBAKENING VAN MUNISIPALE WYKE INGEVOLGE DIE WET OP  
PLAASLIKE REGERING: MUNISIPALE STRUKTURE, 1998****Matatiele Local Municipality****EC441**

Ingevolge Item 5(1) van Bylae 1 van die Wet op Plaaslike Regering: Munisipale Strukture, 1998 (Wet No. 117 van 1998) ( die Wet ) publiseer die Munisipale Afbakeningsraad hiermee sy afbakening van wyke vir die bogenaaamde munisipaliteit. Besonderhede van die afbakening is vervat in die Bylae.

Ingevolge item 5(2) van Bylae 1 van die Wet, kan enige persoon wat gegrief is deur 'n afbakening binne 14 dae vanaf publikasie van hierdie kennisgewing skriftelike besware voorlê aan:

Die Munisipale Afbakeningsraad  
Privaatsak X123  
Centurion  
0046

Faks: 086 5248643  
E-pos: wards@demarcation.org.za

Die aangehegte vorm MDB5 moet asseblief gebruik word om beswaar aan te teken. Die vorm is ook beskikbaar op [www.demarcation.org.za](http://www.demarcation.org.za)

**MS JANE THUPANA  
VOORSITTER : MUNISIPALE AFBAKENINGSRAAD****BYLAE**

Ingevolge artikel 18(3) van die Wet op Plaaslike Regering: Munisipale Strukture, 1998 (Wet 117 van 1998) het die LUR vir plaaslike regering bepaal dat die munisipale raad bestaan uit 51 raadslede.

Na oorlegpleging met die Onafhanklike Verkiesingskommissie het die Munisipale Afbakeningsraad die munisipaliteit in 26 wyke afgebaken ingevolge Bylae 1 van die Wet.

Die getal geregistreerde kiesers in elke wyk, wyk nie meer as vyftien persent van die norm af nie. Die norm is bepaal deur die getal geregistreerde kiesers op die munisipale segment van die nasionale gemeenskaplike kieserslys, naamlik 93738 kiesers op 5 Maart 2014, deur die getal wyke in die munisipaliteit te deel.

'n Oorsigkaart van die munisipale grens met die grense van die wyke binne die munisipale grens, en 'n kaart van elke wyk, is aangeheg. Ingeval van 'n verskil tussen 'n kaart en hierdie bylae, sal die kaart geld.

Die wyknommers, die stembedistrikte en stemlokale in elke wyk, en die getal kiesers is as volg:

**Ward 1** comprises of a total of 3973 registered voters.  
**Wyk 1** bestaan uit 'n totaal van 3973 geregistreerde kiesers.  
 MIN VOTERS/KIESER 3064 NORM 3605 MAX VOTERS/KIESER 4146

VOTING DISTRICT No. STEMDISTRIK No.	VOTING STATION NAME STEMLOKAAL NAAM	NUMBER OF VOTERS GETAL KIESERS	SPLIT VD VERDEELDE SD
11780232	MALUTI DEVELOPMENT CENTRE	1955	
11780210	ZAMOKUHLE JUNIOR SECONDARY SCHOOL	1115	
11780760	MALUTI JUNIOR SECONDARY SCHOOL	903	

**Ward 2** comprises of a total of 3589 registered voters.  
**Wyk 2** bestaan uit 'n totaal van 3589 geregistreerde kiesers.  
 MIN VOTERS/KIESER 3064 NORM 3605 MAX VOTERS/KIESER 4146

VOTING DISTRICT No. STEMDISTRIK No.	VOTING STATION NAME STEMLOKAAL NAAM	NUMBER OF VOTERS GETAL KIESERS	SPLIT VD VERDEELDE SD
11780759	MOLIKO SENIOR PRIMARY SCHOOL	624	
11780265	MAPHELENG PRE-SCHOOL	470	
11780748	RAMOHLAKOANA JUNIOR SECONDARY SCHOOL	749	
11780771	MALUBALUBE JUNIOR SECONDARY SCHOOL	964	
11780209	MALUBALUBE TRIBAL AUTHORITY	782	

**Ward 3** comprises of a total of 3601 registered voters.  
**Wyk 3** bestaan uit 'n totaal van 3601 geregistreerde kiesers.  
 MIN VOTERS/KIESER 3064 NORM 3605 MAX VOTERS/KIESER 4146

VOTING DISTRICT No. STEMDISTRIK No.	VOTING STATION NAME STEMLOKAAL NAAM	NUMBER OF VOTERS GETAL KIESERS	SPLIT VD VERDEELDE SD
11780254	MANASE JUNIOR SECONDARY SCHOOL	430	
11781143	TSEPISONG JUNIOR SECONDARY SCHOOL	830	
11780243	MASAKALA JUNIOR SECONDARY SCHOOL	1188	
11780805	MALIMONG COMMUNITY HALL	343	
11780782	BAVUMILE SENIOR PRIMARY SCHOOL	287	
11780276	HEBRON JUNIOR SECONDARY SCHOOL	523	

**Ward 4** comprises of a total of 3774 registered voters.  
**Wyk 4** bestaan uit 'n totaal van 3774 geregistreerde kiesers.  
 MIN VOTERS/KIESER 3064 NORM 3605 MAX VOTERS/KIESER 4146

VOTING DISTRICT No. STEMDISTRIK No.	VOTING STATION NAME STEMLOKAAL NAAM	NUMBER OF VOTERS GETAL KIESERS	SPLIT VD VERDEELDE SD
11781288	PHELLANG PRE-SCHOOL	308	
11780849	TSITSONG JUNIOR SECONDARY SCHOOL	254	

11780692	EDWARD'S HOPE JUNIOR SECONDARY SCHOOL	487
11780311	MAZIZINI JUNIOR PRIMARY SCHOOL	606
11780816	PROSPECT JUNIOR SECONDARY SCHOOL	727
11780681	PHAHAMANG JUNIOR SECONDARY SCHOOL.	347
11780827	NKASELE JUNIOR SECONDARY SCHOOL	380
11780300	BETHEL JUNIOR SECONDARY SCHOOL	665

**Ward 5** comprises of a total of 3451 registered voters.  
**Wyk 5** bestaan uit 'n totaal van 3451 geregistreerde kiesers.  
 MIN VOTERS/KIESER 3064 NORM 3605 MAX VOTERS/KIESER 4146

VOTING DISTRICT No. STEMDISTRIK No.	VOTING STATION NAME STEMLOKAAL NAAM	NUMBER OF VOTERS GETAL KIESERS	SPLIT VD VERDEELDE SD
11780399	LUFEFENI JUNIOR SECONDARY SCHOOL	380	
11780401	PAMLAVILLE JUNIOR SECONDARY SCHOOL	942	
11780726	LAMEKA FARM SCHOOL	610	
11780625	ZWELITSHA JUNIOR SECONDARY SCHOOL	300	
11780614	MOSTER ROMAN CATHOLIC CHURCH	299	
11780377	CHIBINI JUNIOR SECONDARY SCHOOL	920	

**Ward 6** comprises of a total of 3561 registered voters.  
**Wyk 6** bestaan uit 'n totaal van 3561 geregistreerde kiesers.  
 MIN VOTERS/KIESER 3064 NORM 3605 MAX VOTERS/KIESER 4146

VOTING DISTRICT No. STEMDISTRIK No.	VOTING STATION NAME STEMLOKAAL NAAM	NUMBER OF VOTERS GETAL KIESERS	SPLIT VD VERDEELDE SD
11781165	RETHABILE PRE-SCHOOL	681	
11780883	HLOMENDLINI JUNIOR SECONDARY SCHOOL	689	
11780221	MALUTI SENIOR SECONDARY SCHOOL	432	
11780153	POLOKONG JUNIOR SECONDARY SCHOOL	1172	
11780142	MANGUZELA JUNIOR SECONDARY SCHOOL	587	

**Ward 7** comprises of a total of 3629 registered voters.  
**Wyk 7** bestaan uit 'n totaal van 3629 geregistreerde kiesers.  
 MIN VOTERS/KIESER 3064 NORM 3605 MAX VOTERS/KIESER 4146

VOTING DISTRICT No. STEMDISTRIK No.	VOTING STATION NAME STEMLOKAAL NAAM	NUMBER OF VOTERS GETAL KIESERS	SPLIT VD VERDEELDE SD
11780670	NTABENI SENIOR PRIMARY SCHOOL	461	
11780669	NGCWENGANA JUNIOR SECONDARY SCHOOL	272	
11780658	ESIFOLWENI PRIMARY JUNIOR SCHOOL	261	

11780647	MNGENI JUNIOR SECONDARY SCHOOL	398
11780412	ST COLUMBUS SENIOR PRIMARY SCHOOL	456
11780197	MAFUBE JUNIOR SECONDARY SCHOOL	671
11780850	BELFORT SENIOR PRIMARY SCHOOL	224
11780175	SIBI SENIOR SECONDARY SCHOOL	469
11780108	SPRINGSIDE JUNIOR SECONDARY SCHOOL	417

**Ward 8** comprises of a total of 3732 registered voters.  
**Wyk 8** bestaan uit 'n totaal van 3732 geregistreerde kiesers.  
 MIN VOTERS/KIESER 3064 NORM 3605 MAX VOTERS/KIESER 4146

VOTING DISTRICT No. STEMDISTRIK No.	VOTING STATION NAME STEMLOKAAL NAAM	NUMBER OF VOTERS GETAL KIESERS	SPLIT VD VERDEELDE SD
11780298	OUTSPAN JUNIOR SECONDARY SCHOOL	796	
11781154	MECHAELING PRE-SCHOOL	558	
11780322	MECHAELING JUNIOR SECONDARY SCHOOL	1163	
11780793	THABANG JUNIOR SECONDARY SCHOOL	1215	

**Ward 9** comprises of a total of 4125 registered voters.  
**Wyk 9** bestaan uit 'n totaal van 4125 geregistreerde kiesers.  
 MIN VOTERS/KIESER 3064 NORM 3605 MAX VOTERS/KIESER 4146

VOTING DISTRICT No. STEMDISTRIK No.	VOTING STATION NAME STEMLOKAAL NAAM	NUMBER OF VOTERS GETAL KIESERS	SPLIT VD VERDEELDE SD
11780737	GUGU SENIOR PRIMARY SCHOOL	422	
11780715	MAKHOPA JUNIOR SECONDARY SCHOOL	547	
11780388	MZONGWANA JUNIOR SECONDARY SCHOOL	936	
11780366	ROCHDALE JUNIOR PRIMARY SCHOOL	706	
11780344	ST MATTHEWS JUNIOR SECONDARY SCHOOL	554	
11780287	KHASHULE JUNIOR SECONDARY SCHOOL	960	

**Ward 10** comprises of a total of 3859 registered voters.  
**Wyk 10** bestaan uit 'n totaal van 3859 geregistreerde kiesers.  
 MIN VOTERS/KIESER 3064 NORM 3605 MAX VOTERS/KIESER 4146

VOTING DISTRICT No. STEMDISTRIK No.	VOTING STATION NAME STEMLOKAAL NAAM	NUMBER OF VOTERS GETAL KIESERS	SPLIT VD VERDEELDE SD
11780513	SIJOKA JUNIOR SECONDARY SCHOOL	825	
11781064	MAGADLA JUNIOR SECONDARY SCHOOL	540	
11781053	MAHLUBI JSS	863	
11781200	CABA JUNIOR SECONDARY SCHOOL	345	



11780872	NTABAZIJONGENE JUNIOR SECONDARY SCHOOL	514
11781176	MAGADLA SENIOR SECONDARY SCHOOL	685
11780861	NCOME JUNIOR PRIMARY SCHOOL	87

**Ward 11** comprises of a total of 3988 registered voters.  
**Wyk 11** bestaan uit 'n totaal van 3988 geregistreerde kiesers.

MIN VOTERS/KIESER 3064 NORM 3605 MAX VOTERS/KIESER 4146

VOTING DISTRICT No. STEMDISTRIK No.	VOTING STATION NAME STEMLOKAAL NAAM	NUMBER OF VOTERS GETAL KIESERS	SPLIT VD VERDEELDE SD
11780906	THOTANENG JUNIOR SECONDARY SCHOOL	444	
11780041	PONTSENG JUNIOR SECONDARY SCHOOL	944	
11780917	MABUA AFRICAN GOSPEL CHURCH	331	
11780063	NKUPULWENI JUNIOR SECONDARY SCHOOL	528	
11780164	PEHONG JUNIOR SECONDARY SCHOOL	223	
11780085	ST ANDREWS JUNIOR SECONDARY SCHOOL	490	
11780052	MAPFONTEIN JUNIOR SECONDARY SCHOOL	1028	

**Ward 12** comprises of a total of 3711 registered voters.  
**Wyk 12** bestaan uit 'n totaal van 3711 geregistreerde kiesers.

MIN VOTERS/KIESER 3064 NORM 3605 MAX VOTERS/KIESER 4146

VOTING DISTRICT No. STEMDISTRIK No.	VOTING STATION NAME STEMLOKAAL NAAM	NUMBER OF VOTERS GETAL KIESERS	SPLIT VD VERDEELDE SD
11780030	TSIKARONG JSS	736	
11780894	NKAU JUNIOR SECONDARY SCHOOL	576	
11781222	MT ZION SENIOR PRIMARY SCHOOL	248	
11781132	TSWELOPELE JUNIOR PRIMARY SCHOOL	314	
11780029	MOSHESH SENIOR SECONDARY SCHOOL	919	
11781042	LERATO SENIOR PRIMARY SCHOOL	918	

**Ward 13** comprises of a total of 3297 registered voters.  
**Wyk 13** bestaan uit 'n totaal van 3297 geregistreerde kiesers.

MIN VOTERS/KIESER 3064 NORM 3605 MAX VOTERS/KIESER 4146

VOTING DISTRICT No. STEMDISTRIK No.	VOTING STATION NAME STEMLOKAAL NAAM	NUMBER OF VOTERS GETAL KIESERS	SPLIT VD VERDEELDE SD
11780018	MPHARANE JUNIOR SECONDARY SCHOOL	862	
11781020	LIKAMORENG JUNIOR SECONDARY SCHOOL	400	
11780074	TSEKONG JUNIOR SECONDARY SCHOOL	610	
11781019	TLHAKANELO JUNIOR SECONDARY SCHOOL	635	

11781031	KUTLOANONG JUNIOR SECONDARY SCHOOL	682
11781008	MPHARANE UPCSA	108

**Ward 14** comprises of a total of 3246 registered voters.  
**Wyk 14** bestaan uit 'n totaal van 3246 geregistreerde kiesers.  
 MIN VOTERS/KIESER 3064 NORM 3605 MAX VOTERS/KIESER 4146

VOTING DISTRICT No. STEMDISTRIK No.	VOTING STATION NAME STEMLOKAAL NAAM	NUMBER OF VOTERS GETAL KIESERS	SPLIT VD VERDEELDE SD
11800617	LEKHALONG JUNIOR SECONDARY SCHOOL	199	
11801023	MATELENG JUNIOR SECONDARY SCHOOL	150	
11800987	MIKA JUNIOR SECONDARY SCHOOL	331	
11800976	PHALLANG SENIOR PRIMARY SCHOOL	246	
11800381	MOALOSI SENIOR PRIMARY SCHOOL	745	
11800729	MAFIKALISIU JUNIOR SECONDARY SCHOOL	295	
11780333	ONGELUKSNEK JUNIOR SECONDARY SCHOOL	242	
11800392	MAPHEELLE JUNIOR SECONDARY SCHOOL	513	
11780535	O'CONNERS CAMP	31	
11800370	THABACHICHA JUNIOR SECONDARY SCHOOL	494	

**Ward 15** comprises of a total of 3370 registered voters.  
**Wyk 15** bestaan uit 'n totaal van 3370 geregistreerde kiesers.  
 MIN VOTERS/KIESER 3064 NORM 3605 MAX VOTERS/KIESER 4146

VOTING DISTRICT No. STEMDISTRIK No.	VOTING STATION NAME STEMLOKAAL NAAM	NUMBER OF VOTERS GETAL KIESERS	SPLIT VD VERDEELDE SD
11780939	POLILE JUNIOR SECONDARY SCHOOL	541	
11800123	QHOBOSHEANENG JUNIOR SECONDARY SCHOOL	496	
11800965	PHARAMAKHULO SENIOR PRIMARY SCHOOL	282	
11800279	IKAHENG JUNIOR SECONDARY SCHOOL	354	
11801012	LIHASENG JUNIOR SECONDARY SCHOOL	268	
11800202	SEMONKONG JUNIOR SECONDARY SCHOOL	563	
11801269	LEKOENTLANENG SENIOR PRIMARY SCHOOL	127	
11801270	MASIANOKENG SPS	114	
11800415	PABALLONG JUNIOR SECONDARY SCHOOL	625	

**Ward 16** comprises of a total of 3968 registered voters.  
**Wyk 16** bestaan uit 'n totaal van 3968 geregistreerde kiesers.  
 MIN VOTERS/KIESER 3064 NORM 3605 MAX VOTERS/KIESER 4146

VOTING DISTRICT No. STEMDISTRIK No.	VOTING STATION NAME STEMLOKAAL NAAM	NUMBER OF VOTERS GETAL KIESERS	SPLIT VD VERDEELDE SD
11780096	MAKHAULA JUNIOR PRIMARY SCHOOL	623	
11800336	LIKHETLANE JUNIOR SECONDARY SCHOOL	760	
11800583	SKETLANE JUNIOR SECONDARY SCHOOL	606	
11800404	LEKHATLA JUNIOR SECONDARY SCHOOL	374	
11800998	KHOARAI JUNIOR SECONDARY SCHOOL	224	
11801157	MOEANENG JUNIOR SECONDARY SCHOOL	296	
11800426	MECHACHANENG JUNIOR SECONDARY SCHOOL	299	
11781187	MOTLATSI SENIOR PRIMARY SCHOOL	164	
11800954	MOKHESENG SENIOR SECONDARY SCHOOL	622	

**Ward 17** comprises of a total of 3836 registered voters.  
**Wyk 17** bestaan uit 'n totaal van 3836 geregistreerde kiesers.

MIN VOTERS/KIESER 3064

NORM 3605

MAX VOTERS/KIESER 4146

VOTING DISTRICT No. STEMDISTRIK No.	VOTING STATION NAME STEMLOKAAL NAAM	NUMBER OF VOTERS GETAL KIESERS	SPLIT VD VERDEELDE SD
11780490	SIBONGILE JUNIOR SECONDARY SCHOOL	489	
11780973	MOUNT HARGREAVES COMBINED SCHOOL	394	
11780962	MPUMALANGA SENIOR PRIMARY SCHOOL	645	
11780951	EMBIZENI JUNIOR SECONDARY SCHOOL	267	
11780940	MPUTHEKANE JUNIOR SECONDARY SCHOOL	347	
11780502	MANGO JUNIOR SECONDARY SCHOOL	996	
11780928	LUGADA PRE-SCHOOL	530	
11780984	NKALWENI JUNIOR SECONDARY SCHOOL	168	

**Ward 18** comprises of a total of 3300 registered voters.  
**Wyk 18** bestaan uit 'n totaal van 3300 geregistreerde kiesers.

MIN VOTERS/KIESER 3064

NORM 3605

MAX VOTERS/KIESER 4146

VOTING DISTRICT No. STEMDISTRIK No.	VOTING STATION NAME STEMLOKAAL NAAM	NUMBER OF VOTERS GETAL KIESERS	SPLIT VD VERDEELDE SD
11781086	ANTIOK CHURCH	231	
11781097	MRWABO JUNIOR PRIMARY SCHOOL	211	
11780995	TSHISA JUNIOR SECONDARY SCHOOL	304	
11780445	NYANISO SENIOR SECONDARY SCHOOL	392	
11781075	BUBESI JUNIOR SECONDARY SCHOOL	401	
11780524	DUBA JUNIOR SECONDARY SCHOOL	589	

11781266	BAMANZI JPS	169
11781110	SIPHEPHETHO JUNIOR SECONDARY SCHOOL	232
11781211	MATANDELA JUNIOR SECONDARY SCHOOL	226
11781109	SIDAKENI JUNIOR SECONDARY SCHOOL	545

**Ward 19** comprises of a total of 3504 registered voters.  
**Wyk 19** bestaan uit 'n totaal van 3504 geregistreerde kiesers.  
 MIN VOTERS/KIESER 3064 NORM 3605 MAX VOTERS/KIESER 4146

VOTING DISTRICT No. STEMDISTRIK No.	VOTING STATION NAME STEMLOKAAL NAAM	NUMBER OF VOTERS GETAL KIESERS	SPLIT VD VERDEELDE SD
43920019	MATATIELE TOWN HALL	3504	

**Ward 20** comprises of a total of 3464 registered voters.  
**Wyk 20** bestaan uit 'n totaal van 3464 geregistreerde kiesers.  
 MIN VOTERS/KIESER 3064 NORM 3605 MAX VOTERS/KIESER 4146

VOTING DISTRICT No. STEMDISTRIK No.	VOTING STATION NAME STEMLOKAAL NAAM	NUMBER OF VOTERS GETAL KIESERS	SPLIT VD VERDEELDE SD
43920042	NOKHWEZI HALL	1098	
43920031	HARRY GWALA PARK COMMUNITY HALL	2366	

**Ward 21** comprises of a total of 3394 registered voters.  
**Wyk 21** bestaan uit 'n totaal van 3394 geregistreerde kiesers.  
 MIN VOTERS/KIESER 3064 NORM 3605 MAX VOTERS/KIESER 4146

VOTING DISTRICT No. STEMDISTRIK No.	VOTING STATION NAME STEMLOKAAL NAAM	NUMBER OF VOTERS GETAL KIESERS	SPLIT VD VERDEELDE SD
11780591	UPPER MVENYANE JUNIOR SECONDARY SCHOOL	517	
11780580	SITHIYWENI JUNIOR SECONDARY SCHOOL	253	
11780579	R.V.MANTSHULE JUNIOR SECONDARY SCHOOL	358	
11780568	GWADANA JUNIOR SECONDARY SCHOOL	516	
11780557	MDENI JUNIOR SECONDARY SCHOOL	272	
11760915	NTLOLA JUNIOR SECONDARY SCHOOL	380	
11781277	MABHELENI SPS	188	
11780434	MVENYANE SCHOOL	550	
11780423	MAGXENI JUNIOR SECONDARY SCHOOL	360	

**Ward 22** comprises of a total of 3281 registered voters.  
**Wyk 22** bestaan uit 'n totaal van 3281 geregistreerde kiesers.  
 MIN VOTERS/KIESER 3064 NORM 3605 MAX VOTERS/KIESER 4146

VOTING DISTRICT No. STEMDISTRIK No.	VOTING STATION NAME STEMLOKAAL NAAM	NUMBER OF VOTERS GETAL KIESERS	SPLIT VD VERDEELDE SD
--	--	-----------------------------------	--------------------------

11780489	ROLWENI MORAVIAN CHURCH	310
11780478	ELUKHOLWENI JUNIOR SECONDARY SCHOOL	843
11780467	MKHEMANE JUNIOR SECONDARY SCHOOL	729
11780456	HOTOLO JUNIOR SECONDARY SCHOOL	573
11780603	LUHLEKWENI JUNIOR PRIMARY SCHOOL	487
11781121	MKHUHLANE KOP JUNIOR SECONDARY SCHOOL	339

**Ward 23** comprises of a total of 3115 registered voters.  
**Wyk 23** bestaan uit 'n totaal van 3115 geregistreerde kiesers.  
 MIN VOTERS/KIESER 3064 NORM 3605 MAX VOTERS/KIESER 4146

VOTING DISTRICT No. STEMDISTRIK No.	VOTING STATION NAME STEMLOKAAL NAAM	NUMBER OF VOTERS GETAL KIESERS	SPLIT VD VERDEELDE SD
11780120	LUPINDO TRIBAL AUTHORITY	532	
11800639	EMITSHATSHANENI JUNIOR SECONDARY SCHOOL	448	
11800572	FOBANE JUNIOR SECONDARY SCHOOL	772	
11800314	MANGOLONG JUNIOR SECONDARY SCHOOL	676	
11800347	LOWER EMTUMASE SCHOOL	278	
11801056	SEKHUTLONG SENIOR PRIMARY SCHOOL	238	
11800594	DAMANE SENIOR PRIMARY SCHOOL	171	

**Ward 24** comprises of a total of 3269 registered voters.  
**Wyk 24** bestaan uit 'n totaal van 3269 geregistreerde kiesers.  
 MIN VOTERS/KIESER 3064 NORM 3605 MAX VOTERS/KIESER 4146

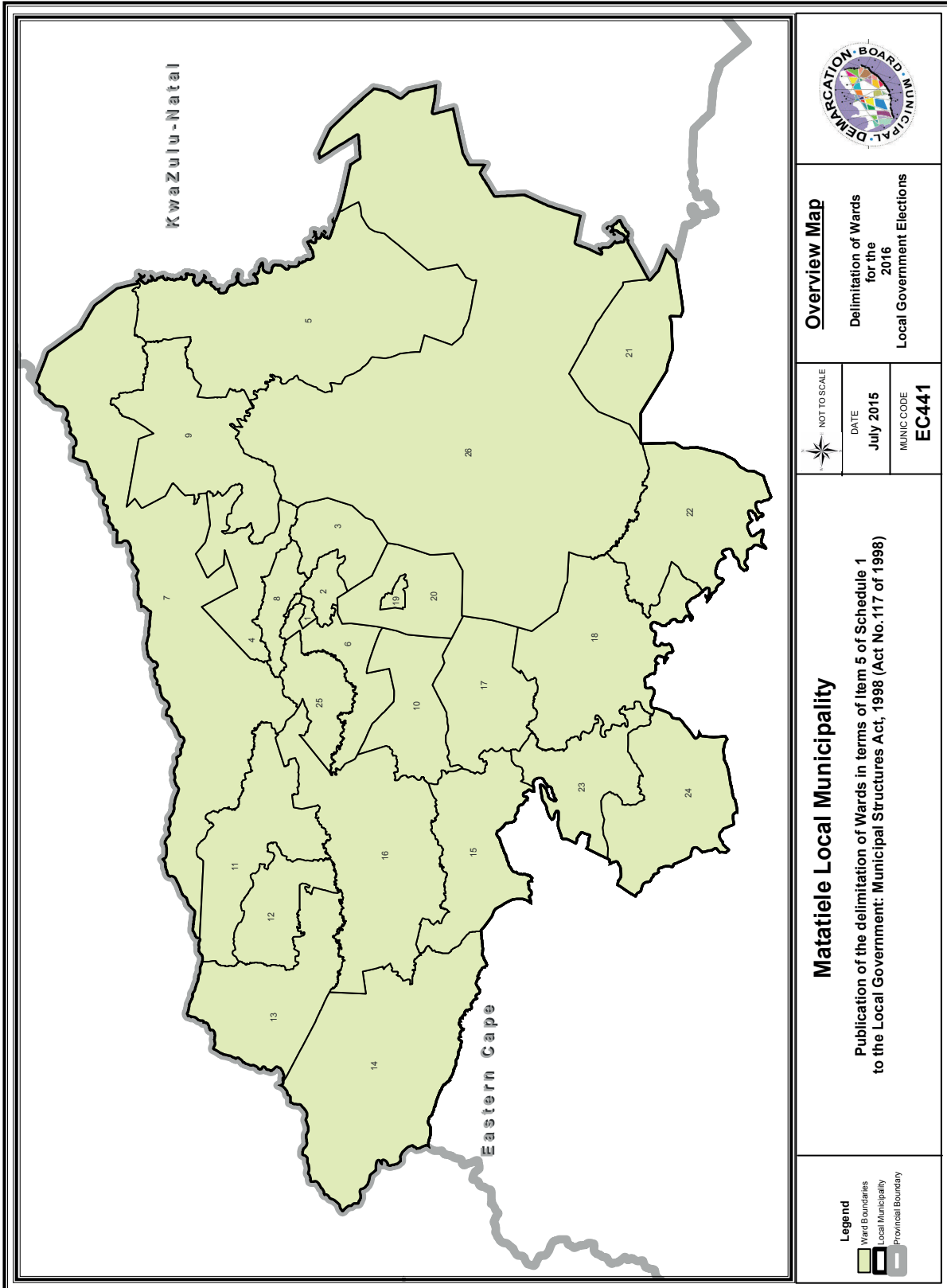
VOTING DISTRICT No. STEMDISTRIK No.	VOTING STATION NAME STEMLOKAAL NAAM	NUMBER OF VOTERS GETAL KIESERS	SPLIT VD VERDEELDE SD
11801168	RAMAFOLE SENIOR SECONDARY SCHOOL	274	
11800606	ZIMPOFU JUNIOR SECONDARY SCHOOL	201	
11800516	MAQHATSENG JUNIOR SECONDARY SCHOOL	320	
11801045	LINOTSING JUNIOR SECONDARY SCHOOL	252	
11801067	PURUTLE SENIOR PRIMARY SCHOOL	171	
11801078	SOLOANA SENIOUR PRIMARY SCHOOL	289	
11801180	MORITING JUNIOR SECONDARY SCHOOL	404	
11800369	ESILINDINI ZIBIMAYOR JUNIOR SECONDARY SCHOOL	546	
11800358	MAHLAKE JUNIOR SECONDARY SCHOOL	240	
11800178	MTHUMASI JUNIOR SECONDARY SCHOOL.	572	

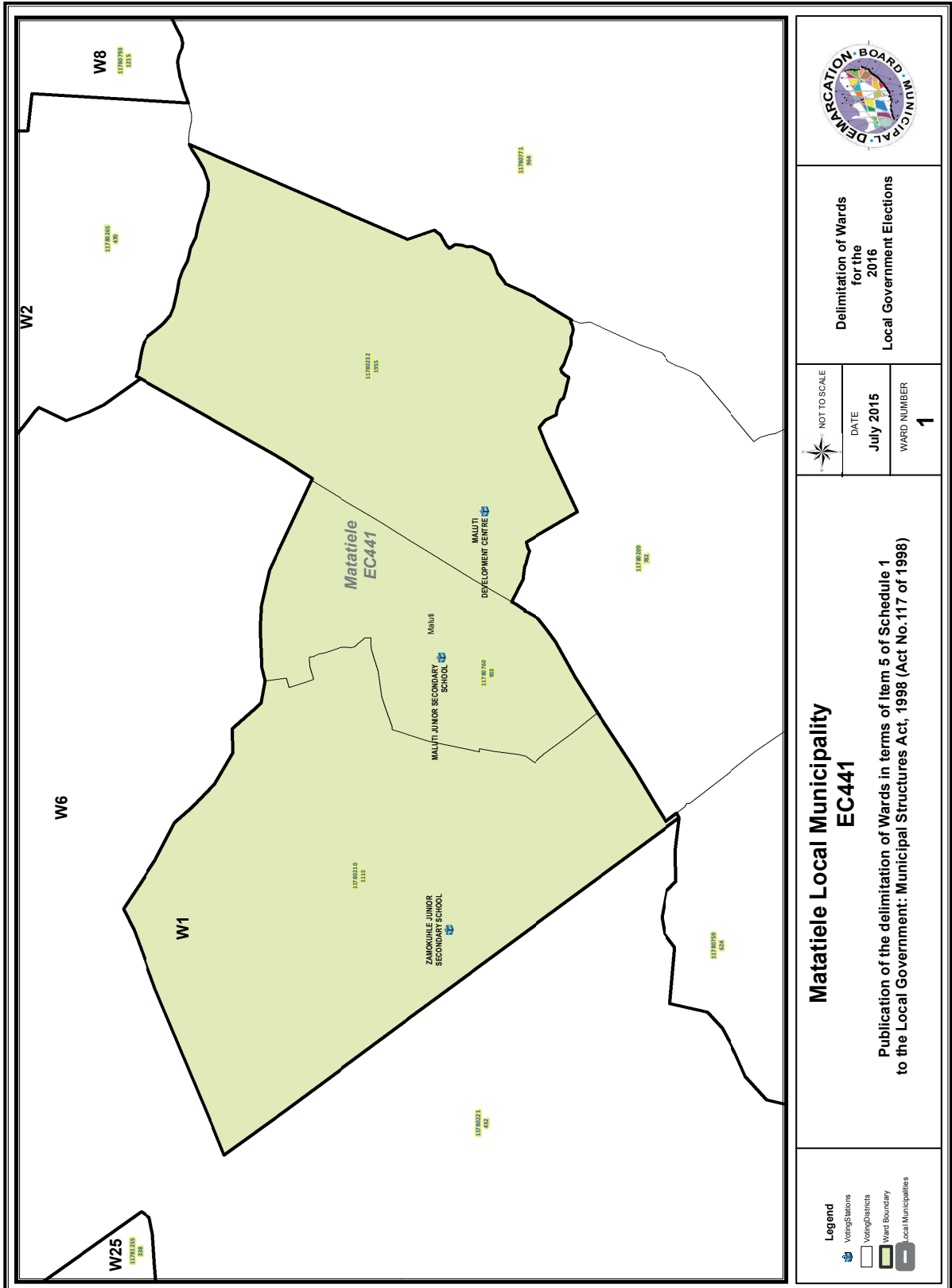
**Ward 25** comprises of a total of 3987 registered voters.  
**Wyk 25** bestaan uit 'n totaal van 3987 geregisteerde kiesers.  
 MIN VOTERS/KIESER 3064 NORM 3605 MAX VOTERS/KIESER 4146

VOTING DISTRICT No. STEMDISTRIK No.	VOTING STATION NAME STEMLOKAAL NAAM	NUMBER OF VOTERS GETAL KIESERS	SPLIT VD VERDEELDE SD
11781255	MOHLAKOANA JUNIOR PRIMARY SCHOOL	338	
11781198	ST MAGARET SPS	457	
11780131	LEPHEANA JUNIOR SECONDARY SCHOOL	864	
11780119	NALEDI JUNIOR SECONDARY SCHOOL.	1733	
11780186	PHAMOTSE JUNIOR SECONDARY SCHOOL	595	

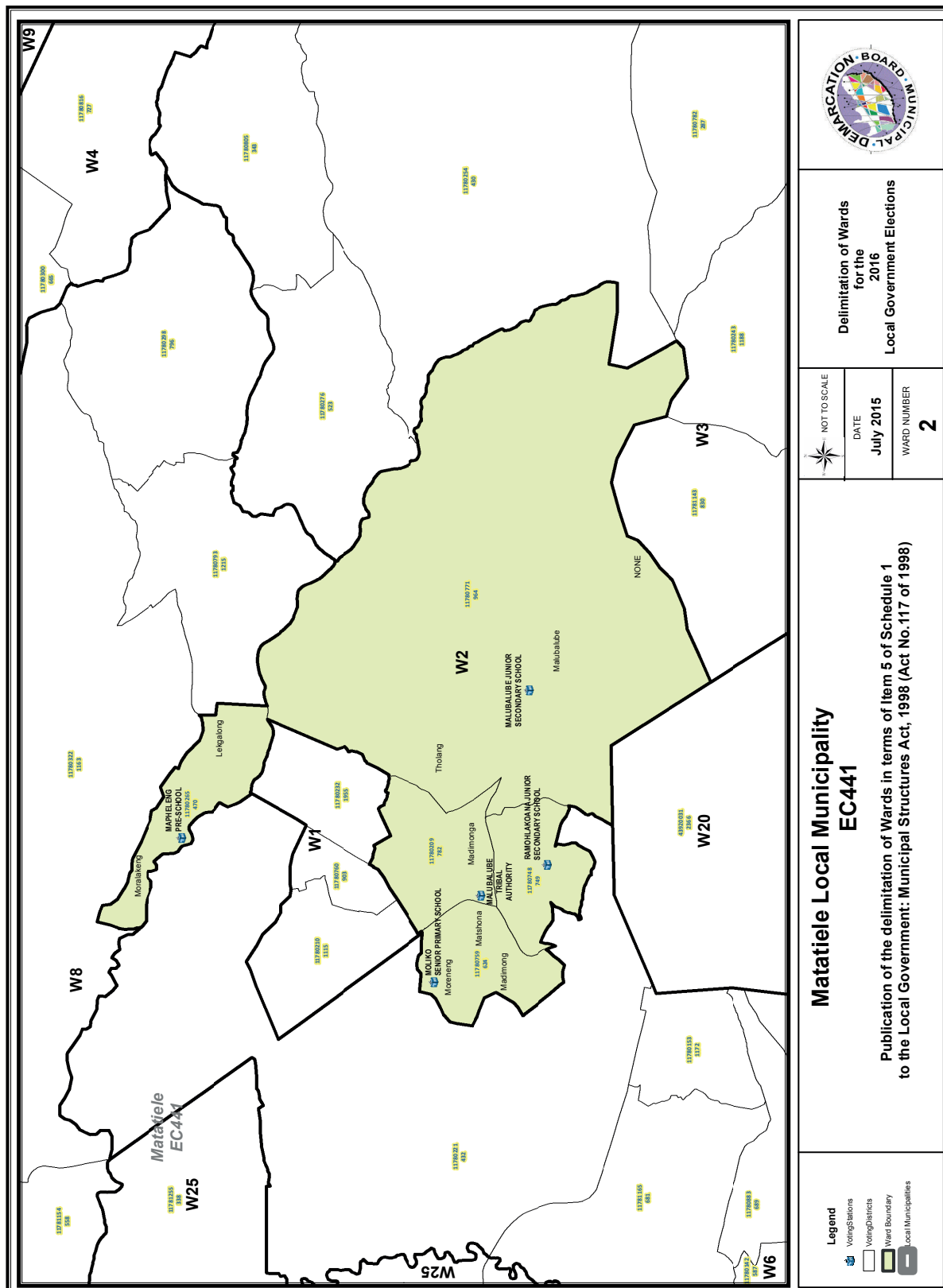
**Ward 26** comprises of a total of 3714 registered voters.  
**Wyk 26** bestaan uit 'n totaal van 3714 geregisteerde kiesers.  
 MIN VOTERS/KIESER 3064 NORM 3605 MAX VOTERS/KIESER 4146

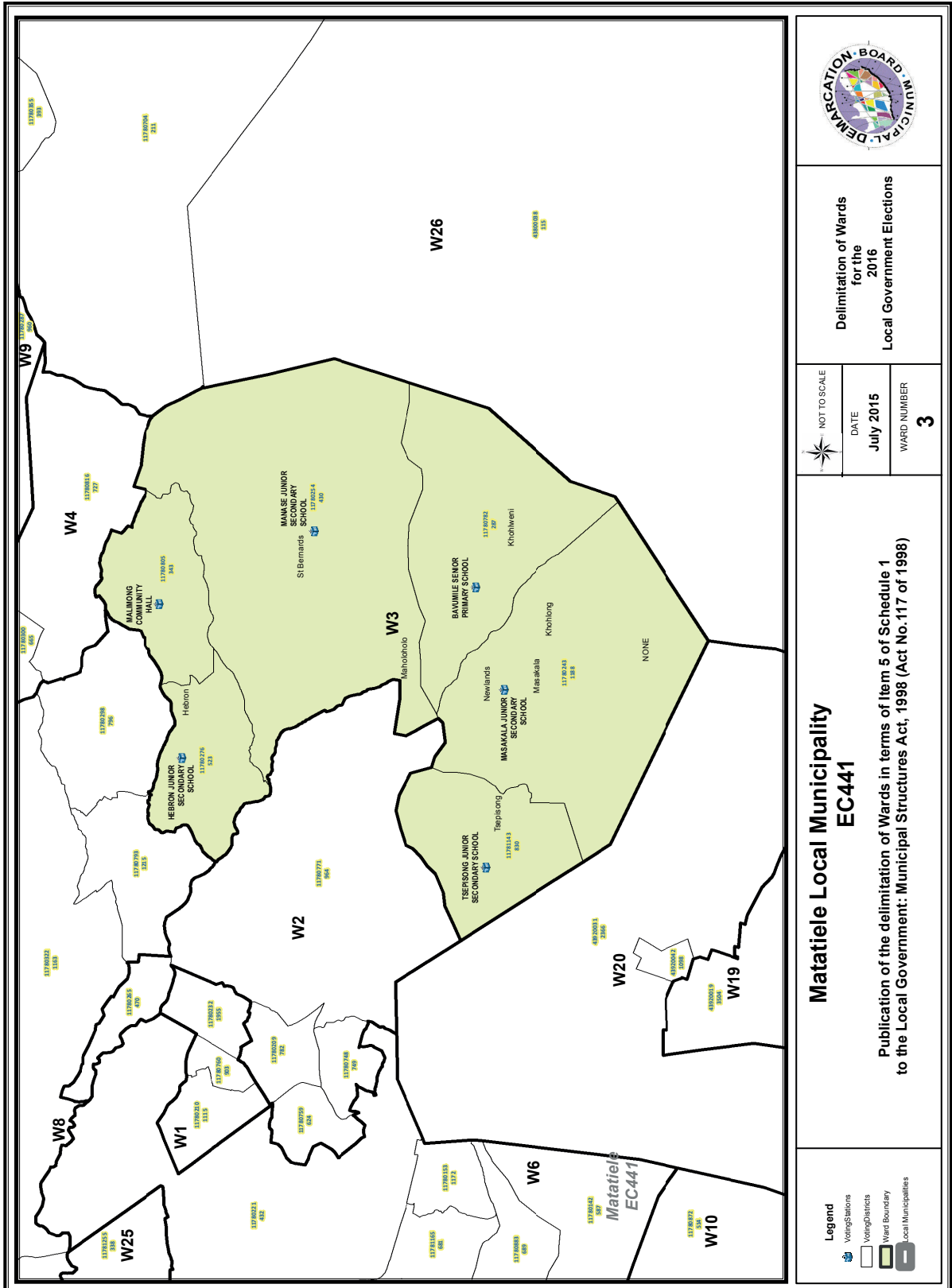
VOTING DISTRICT No. STEMDISTRIK No.	VOTING STATION NAME STEMLOKAAL NAAM	NUMBER OF VOTERS GETAL KIESERS	SPLIT VD VERDEELDE SD
11780355	THOKOZANI JUNIOR PRIMARY SCHOOL	393	
43800027	SANDFONTEIN COMMUNITY HALL	144	
43800016	CEDARVILLE TOWN HALL	2513	
11781233	THEMBALITSHA JUNIOR SECONDARY SCHOOL	231	
43800049	BULFONTEIN JPS	107	
11780704	BLACK DIAMOND JUNIOR SECONDARY SCHOOL	211	
43800038	MATSHEMLA PRIMARY SCHOOL	115	

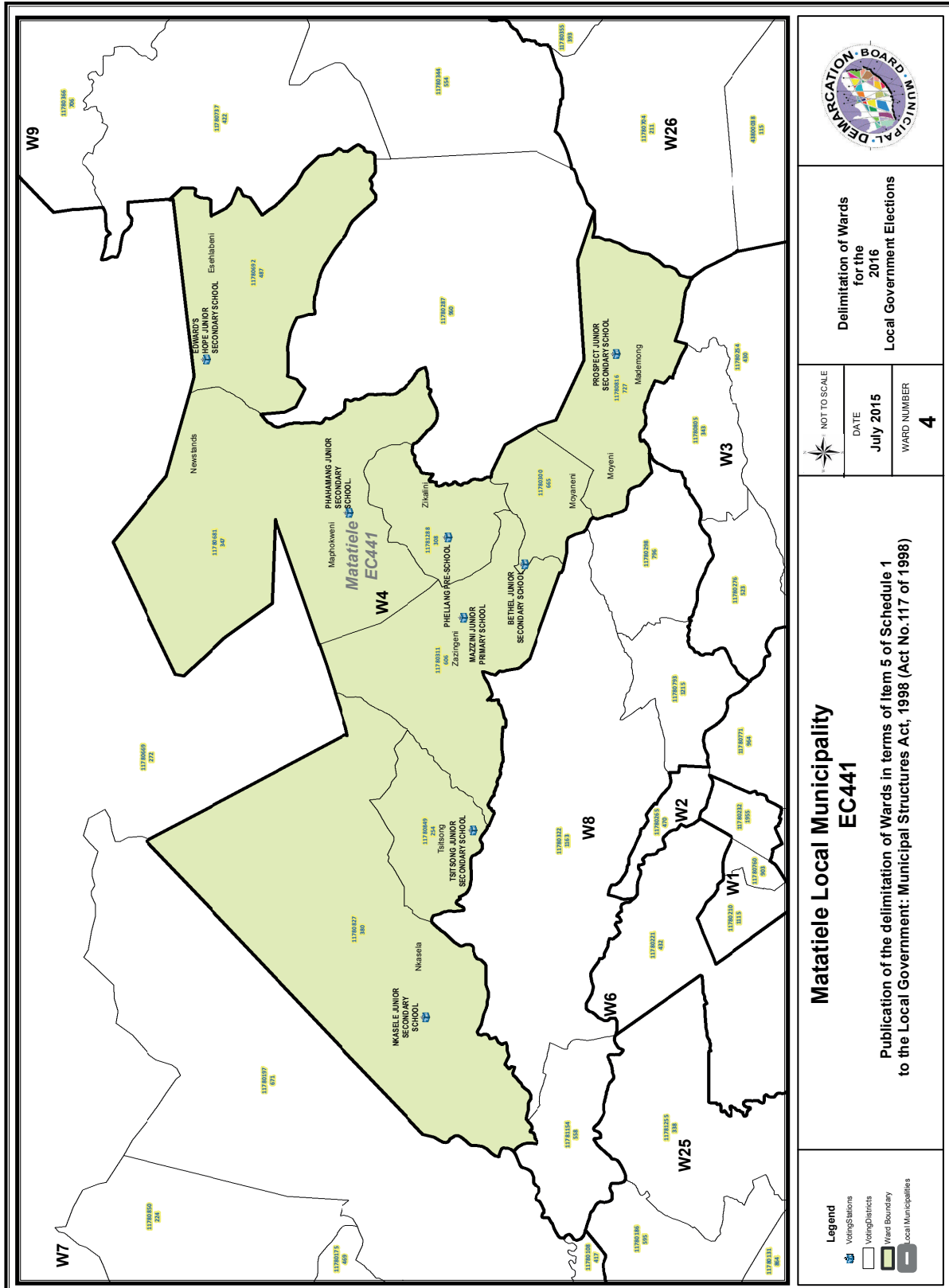


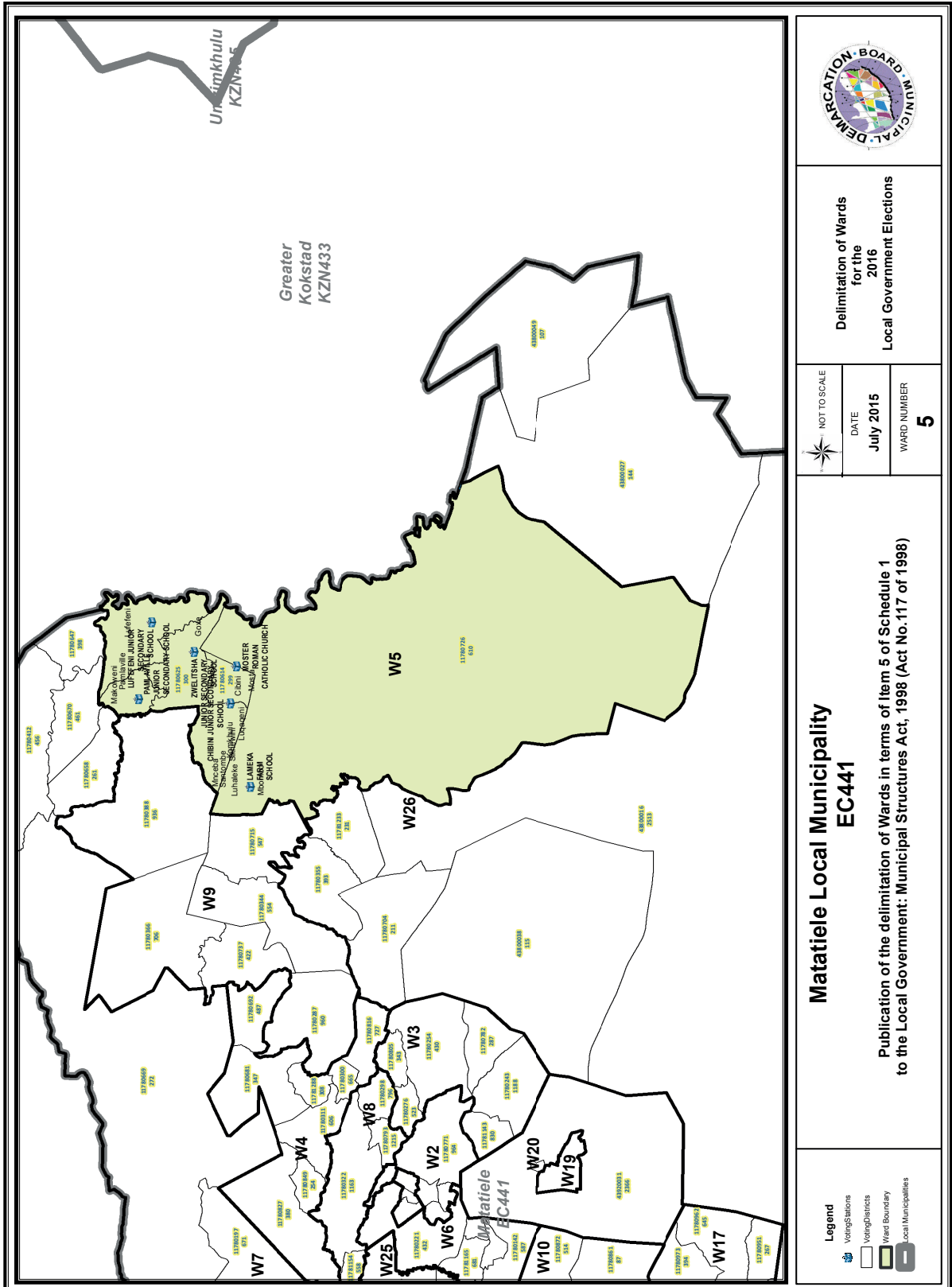


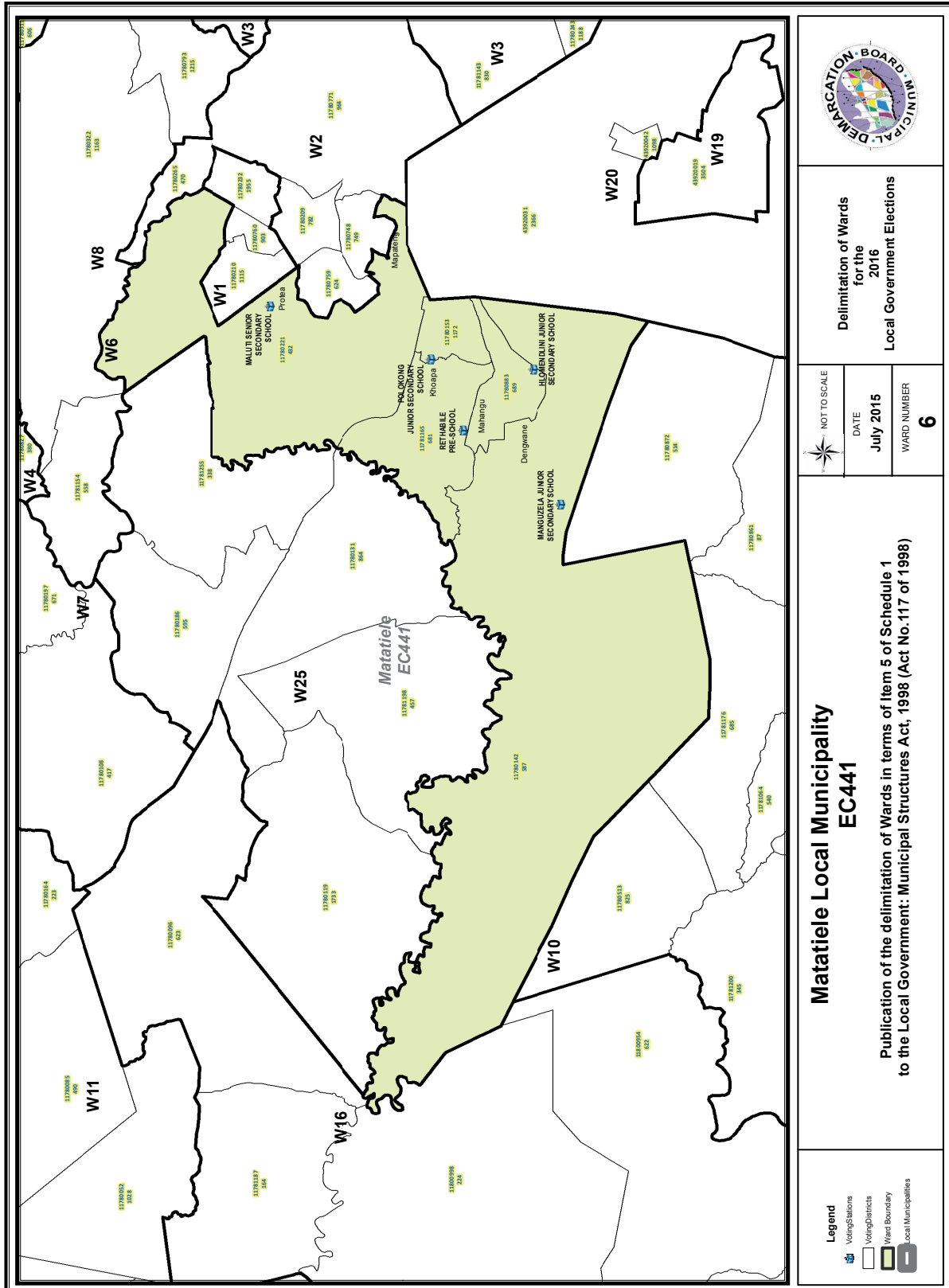


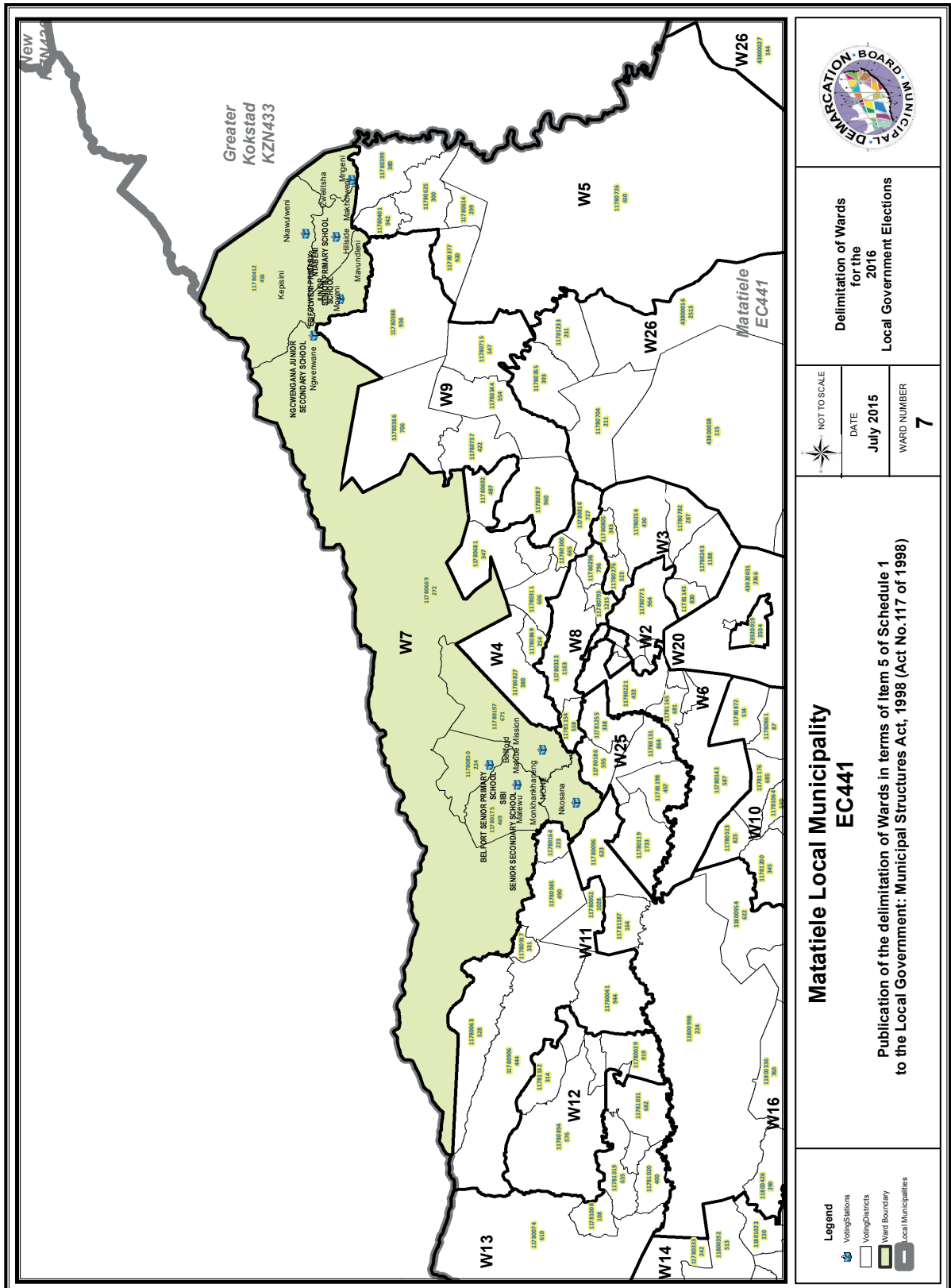


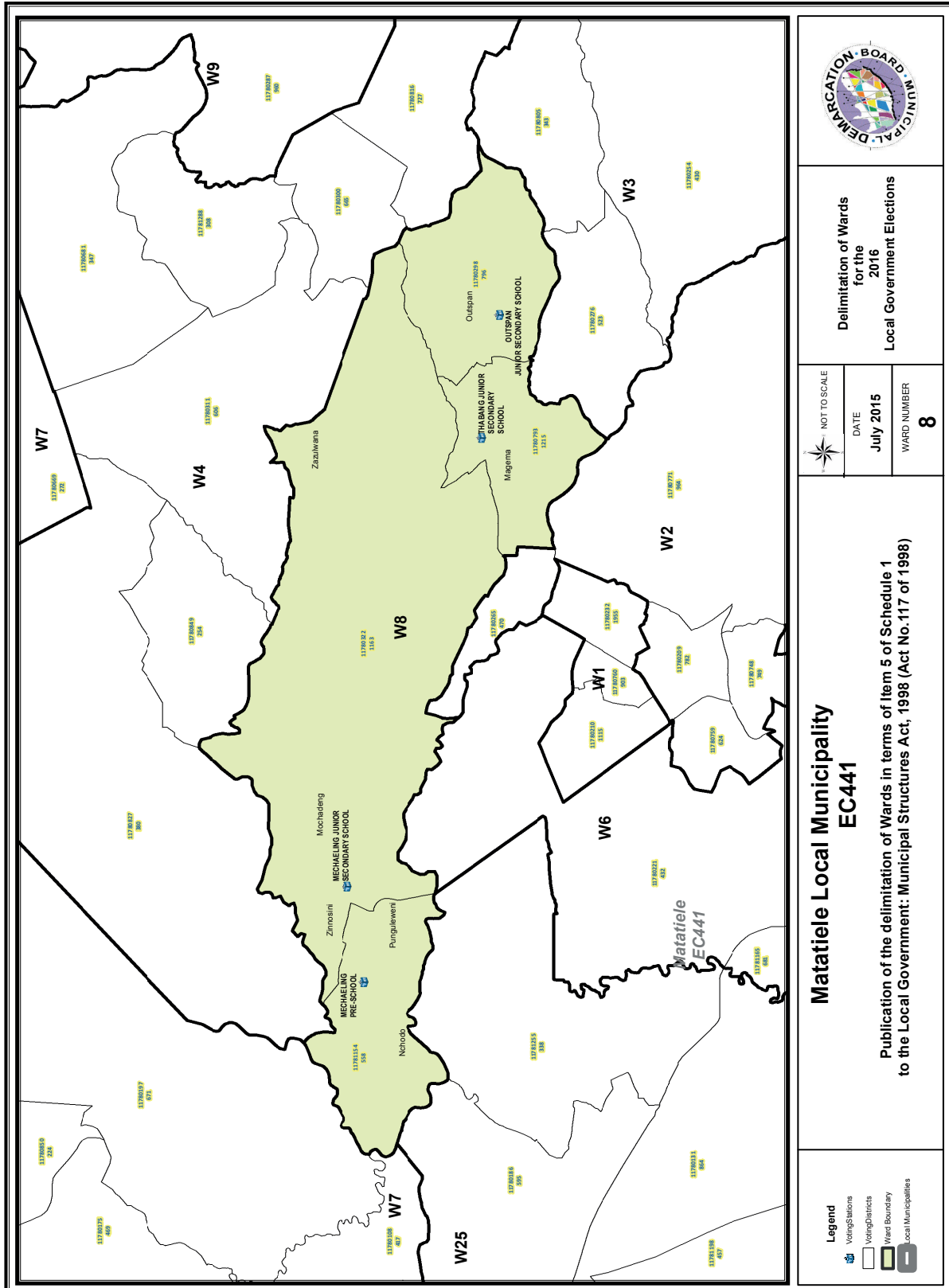


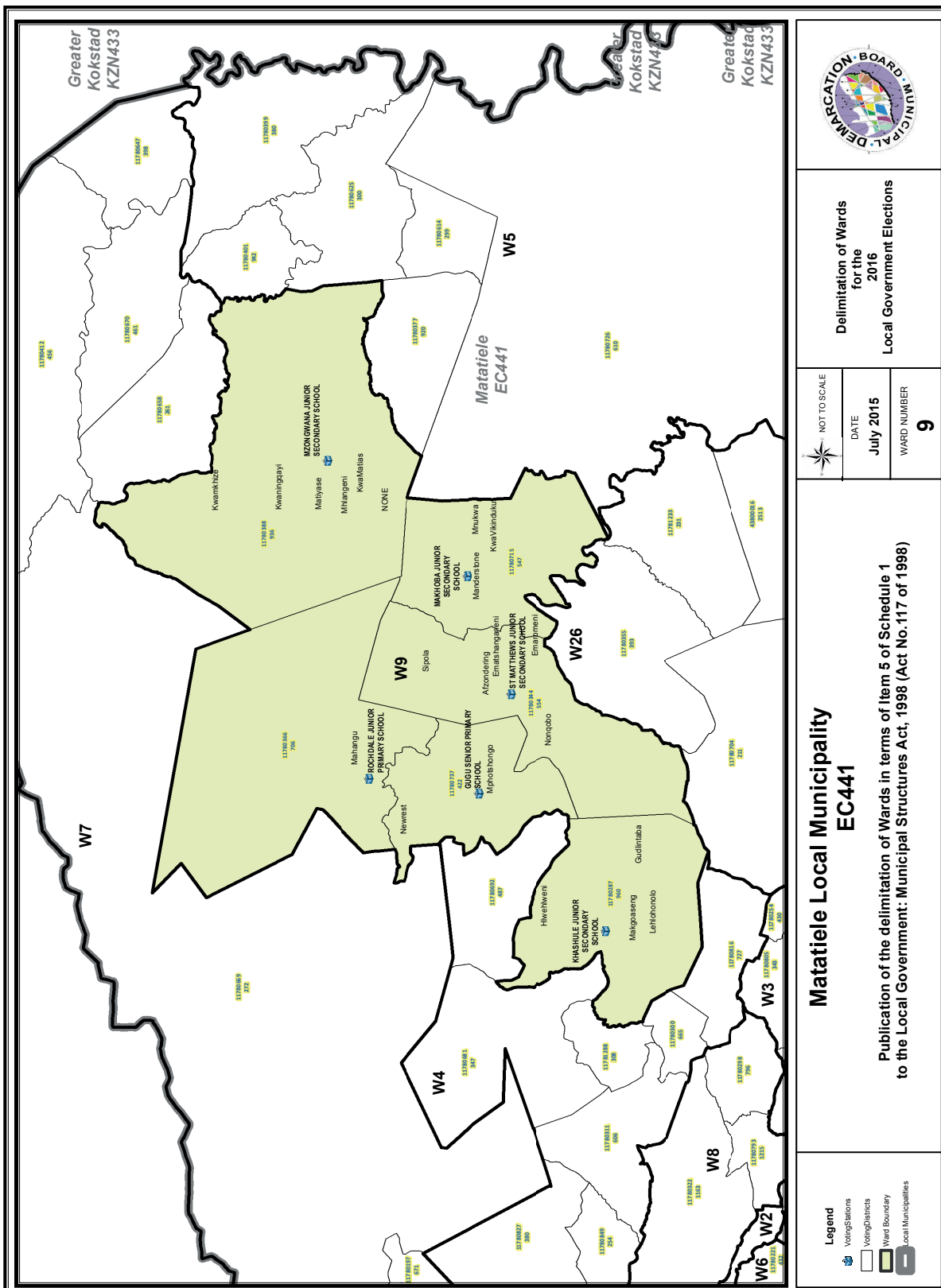












**Delimitation of Wards for the 2016 Local Government Elections**

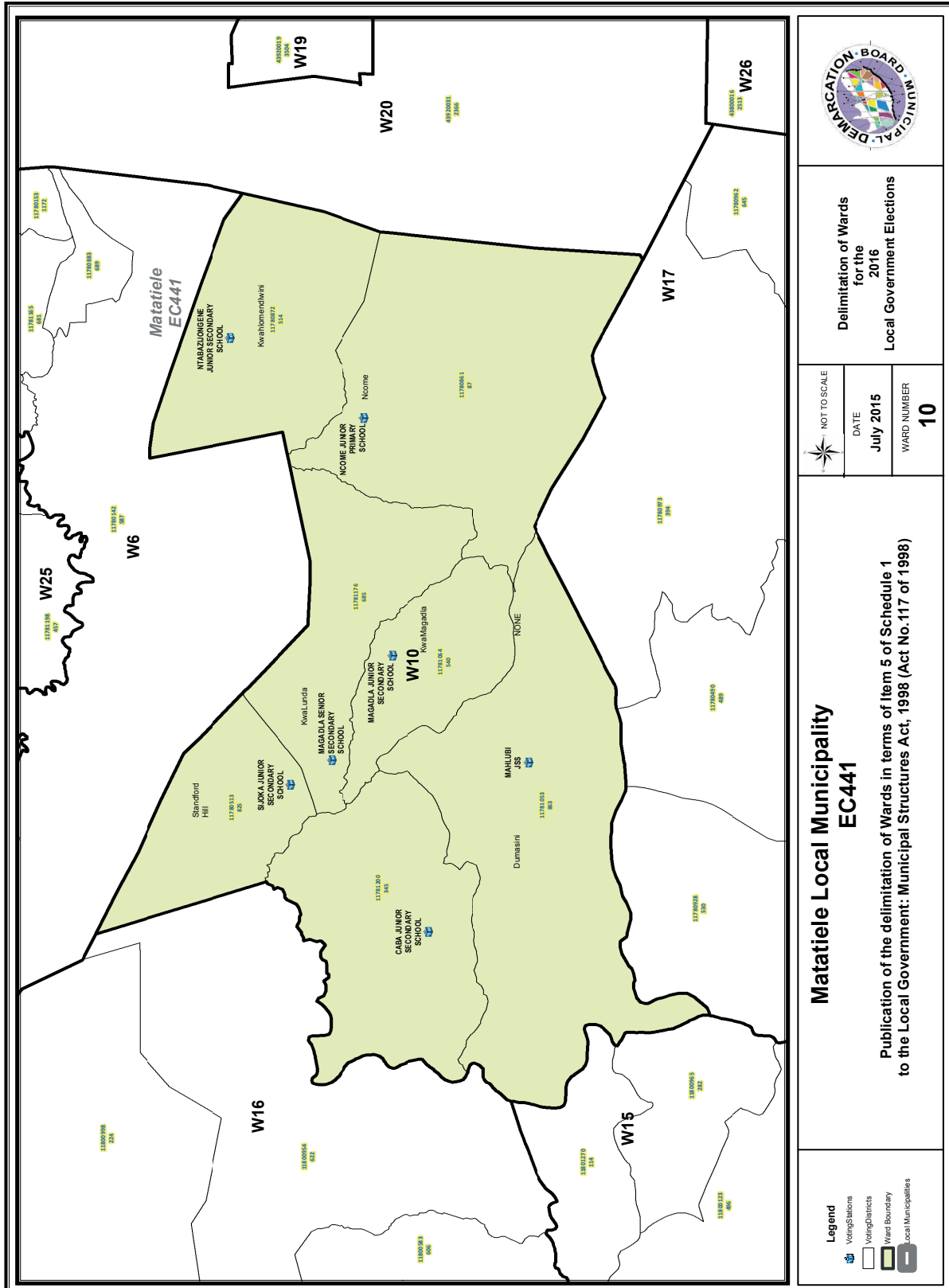
NOT TO SCALE
DATE <b>July 2015</b>
WARD NUMBER <b>9</b>

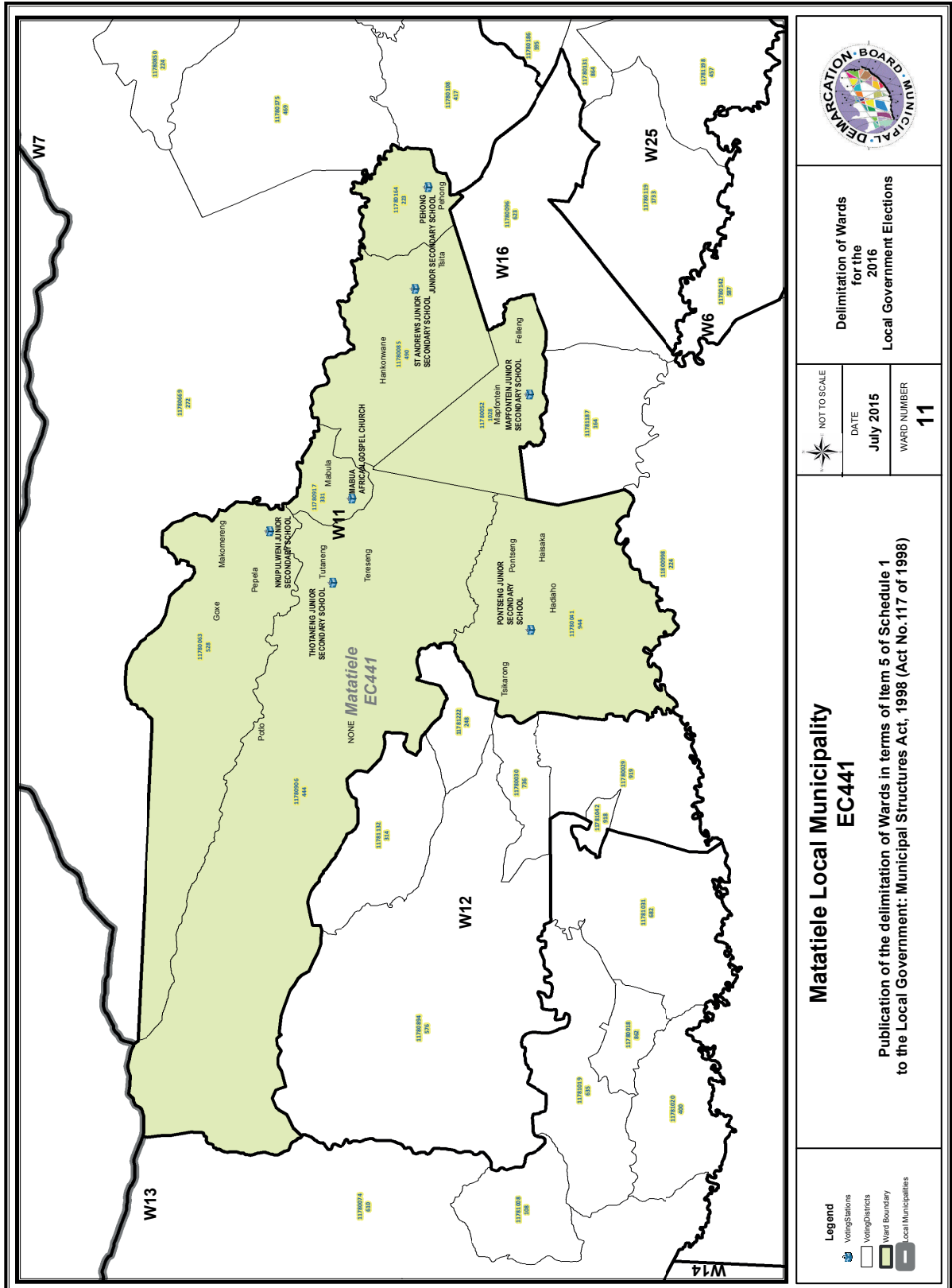
**Matatiele Local Municipality EC441**

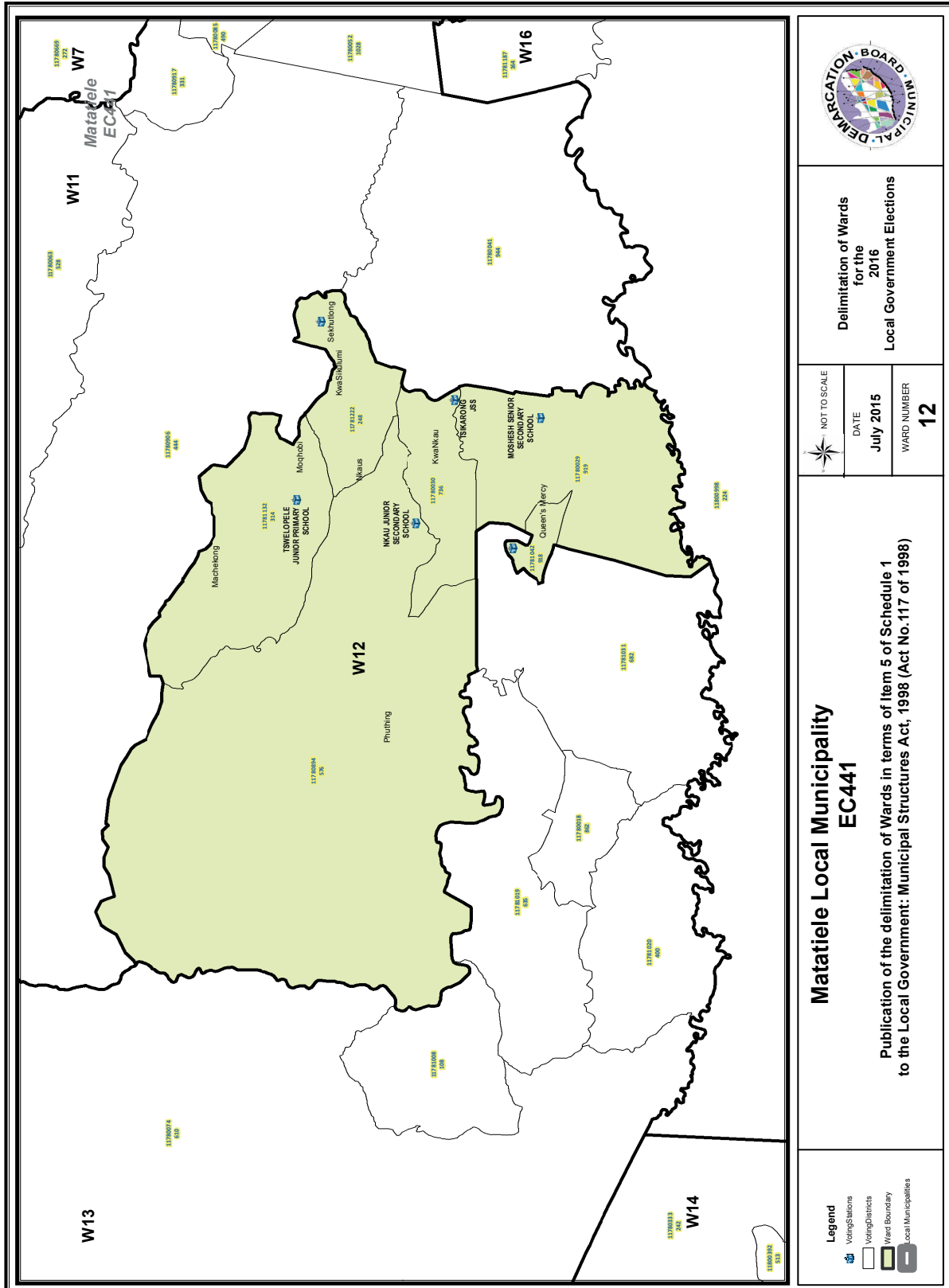
**Publication of the delimitation of Wards in terms of Item 5 of Schedule 1 to the Local Government: Municipal Structures Act, 1998 (Act No.117 of 1998)**

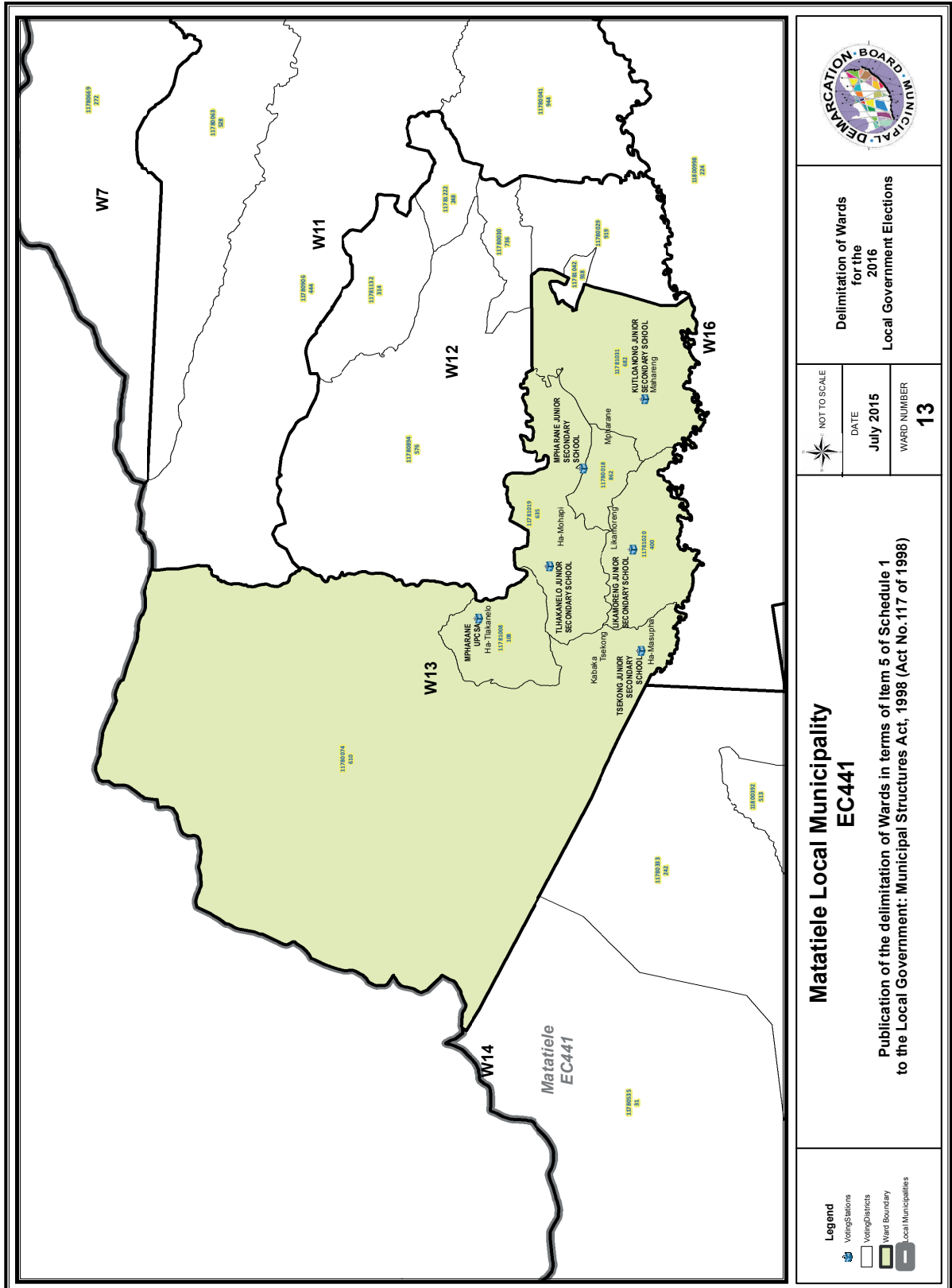
- Legend**
- Voting Stations
  - Voting Districts
  - Ward Boundary
  - Local Municipalities

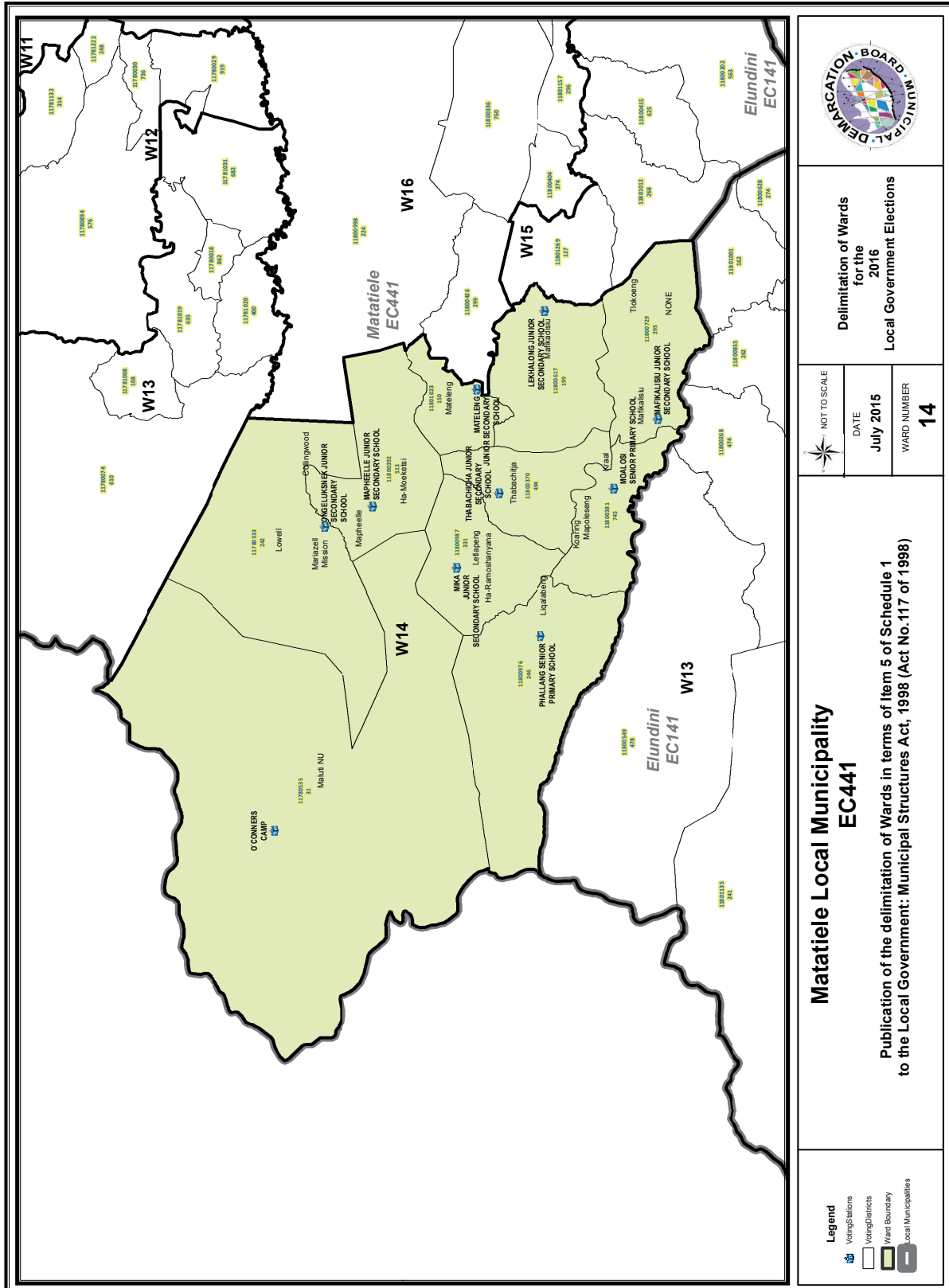


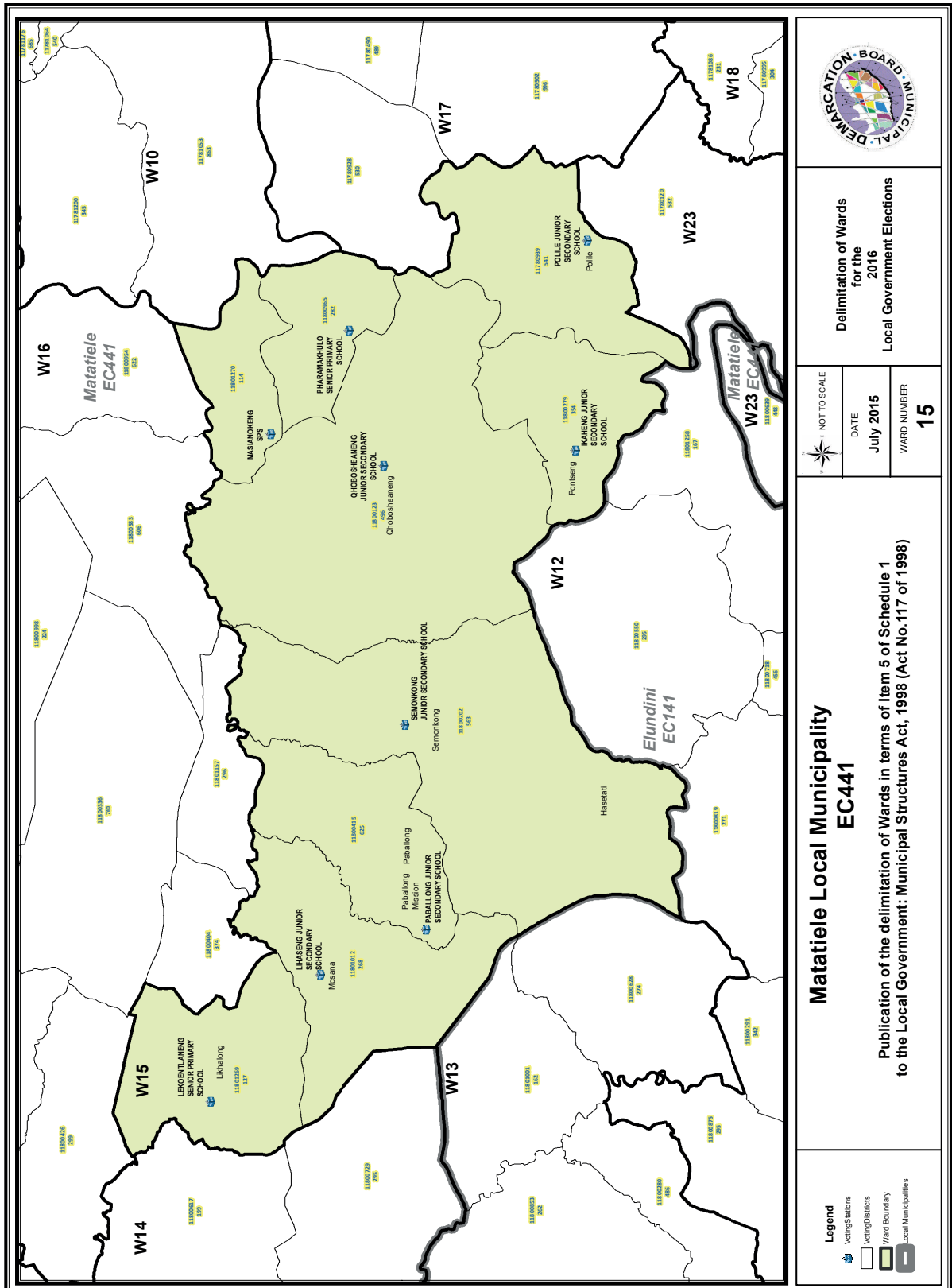


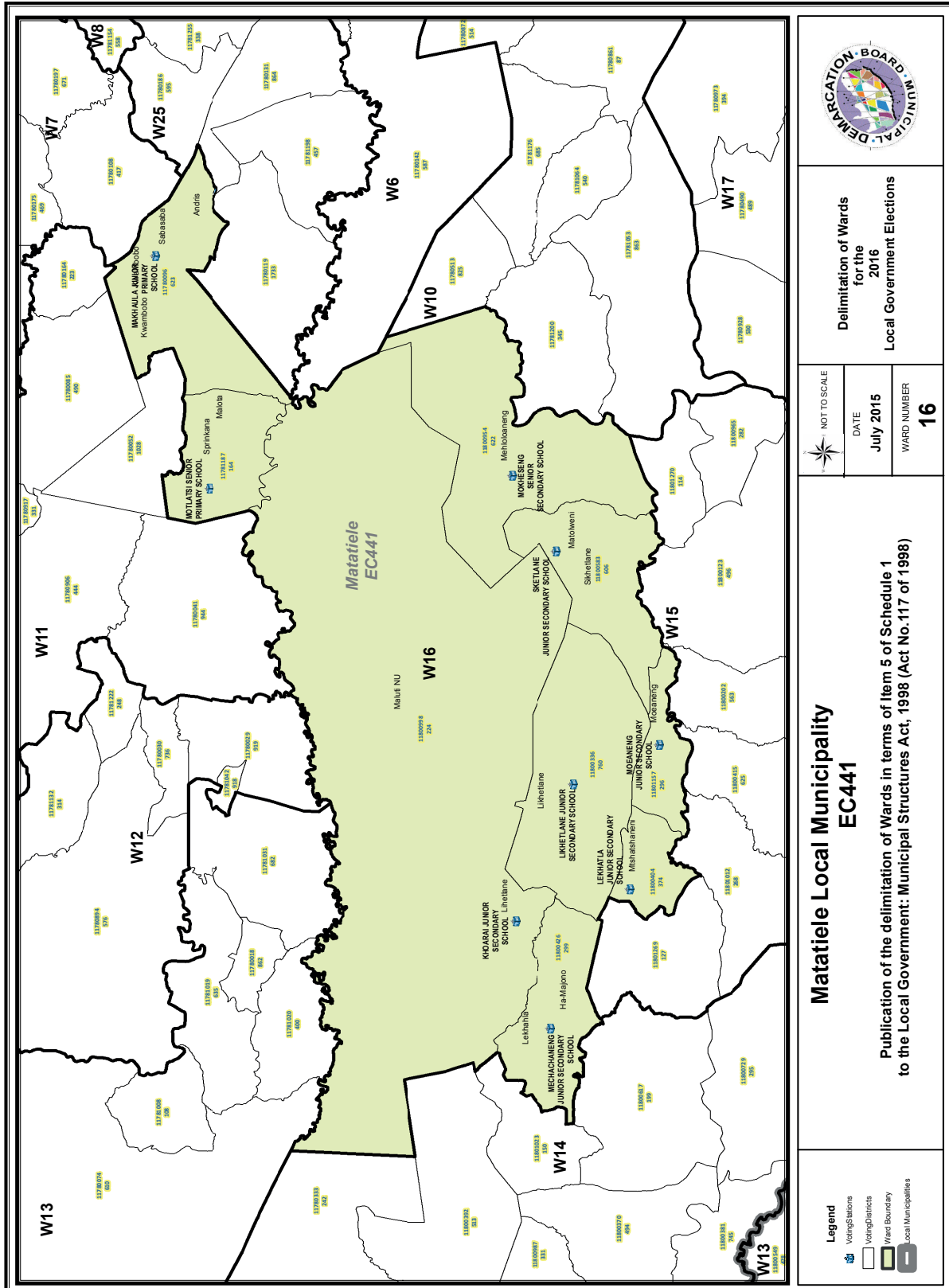












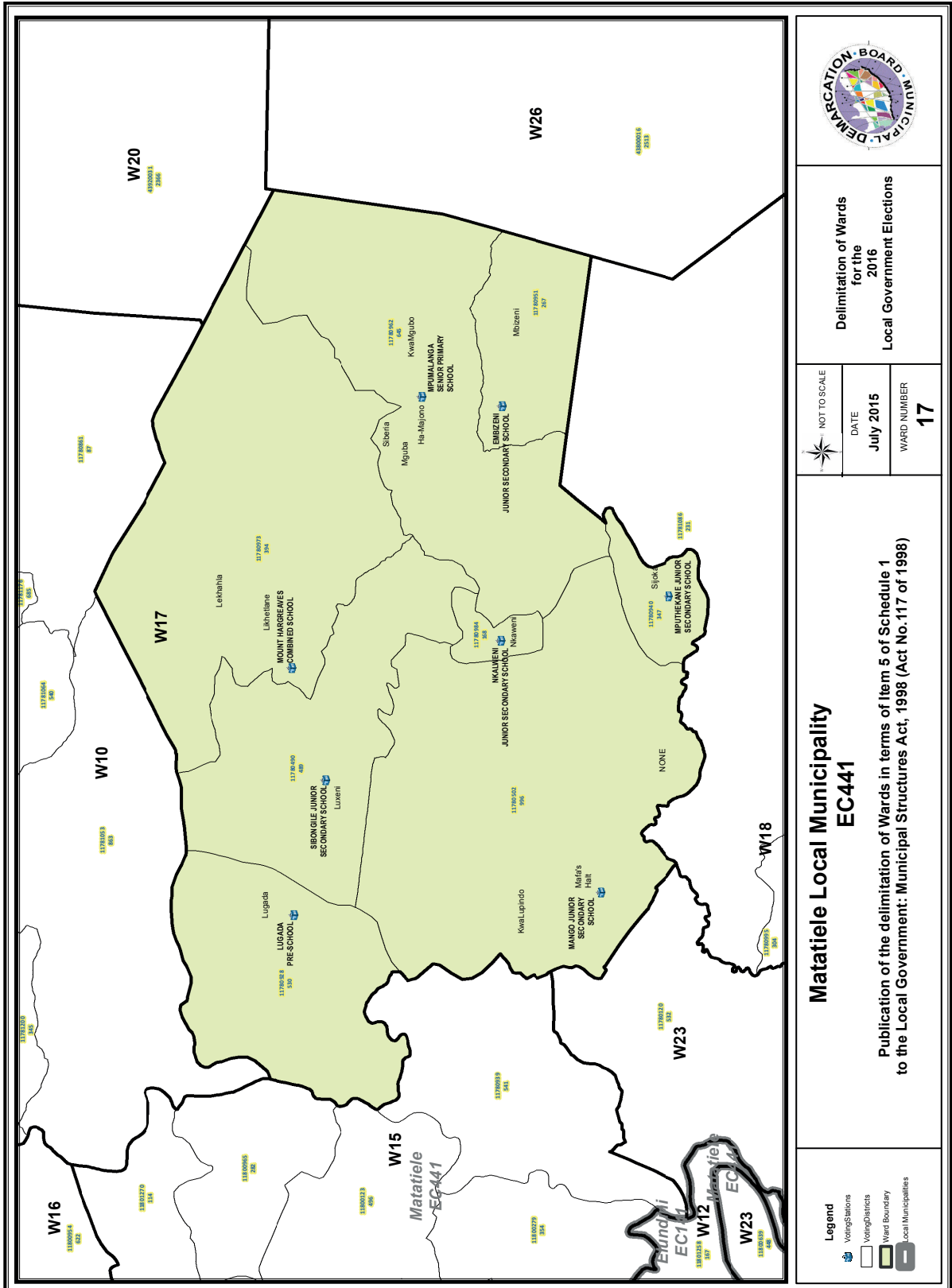
**Delimitation of Wards  
for the  
2016  
Local Government Elections**

NOT TO SCALE
DATE <b>July 2015</b>
WARD NUMBER <b>16</b>

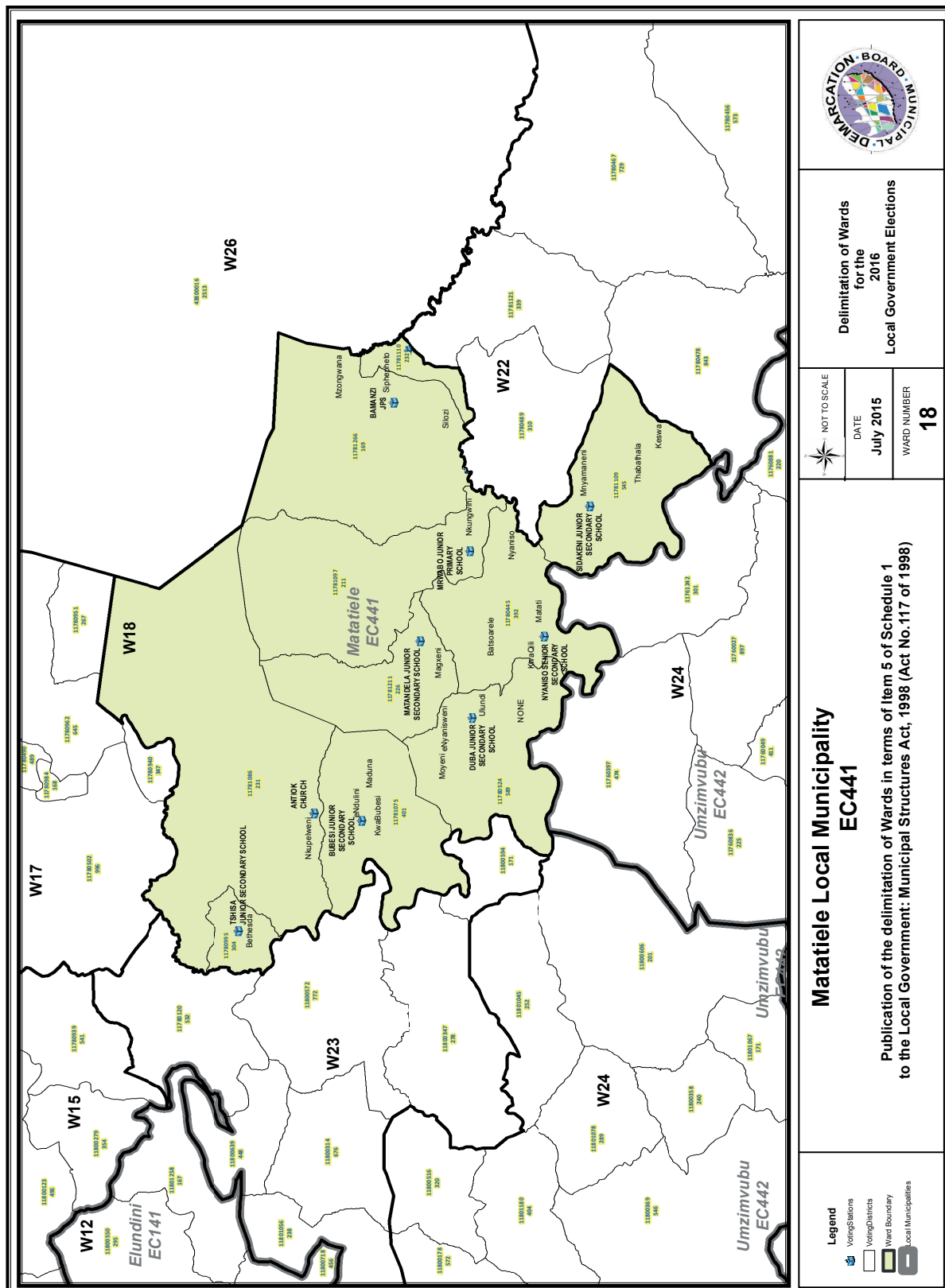
**Matatiele Local Municipality  
EC441**

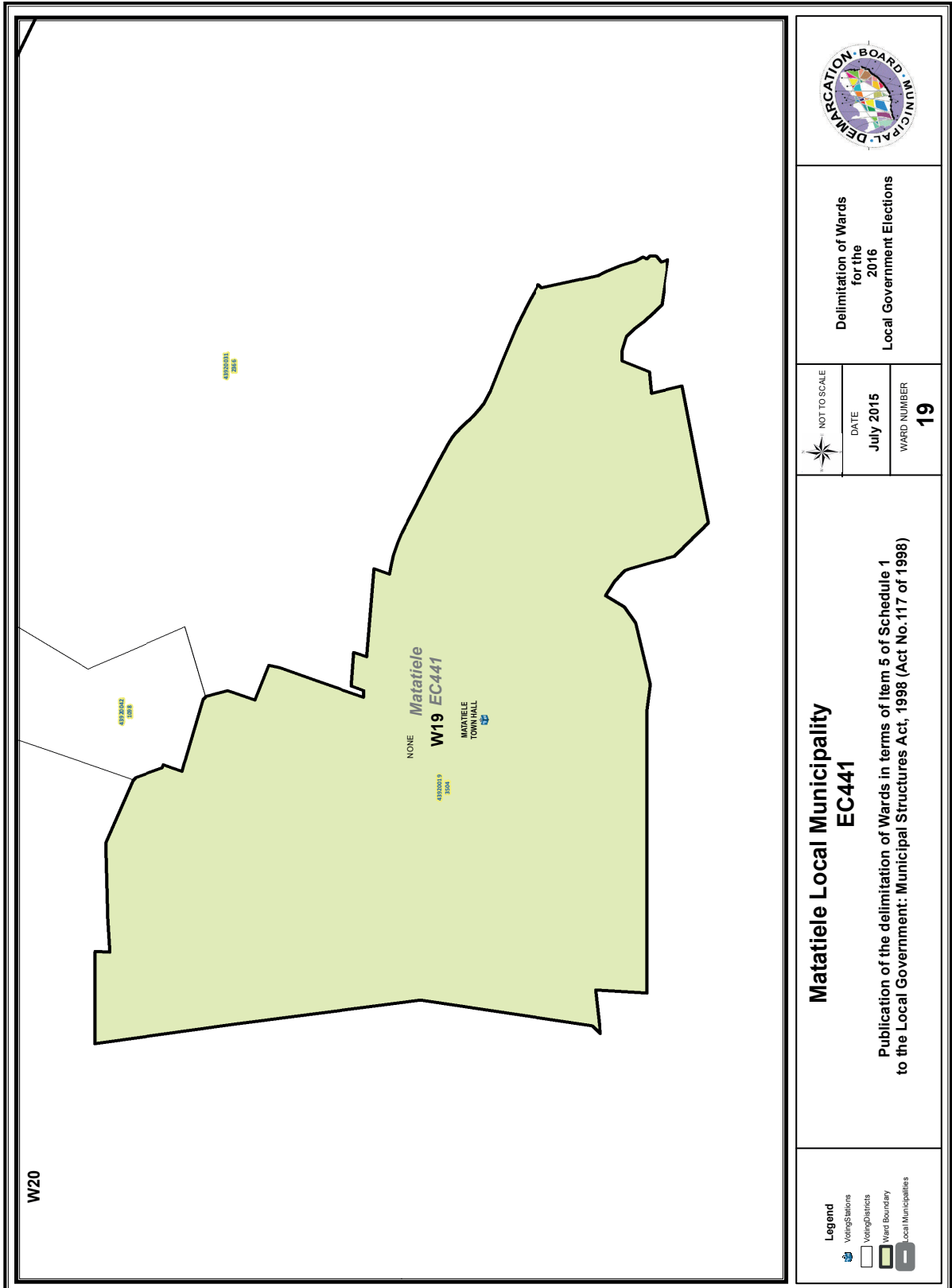
**Publication of the delimitation of Wards in terms of Item 5 of Schedule 1  
to the Local Government: Municipal Structures Act, 1998 (Act No.117 of 1998)**

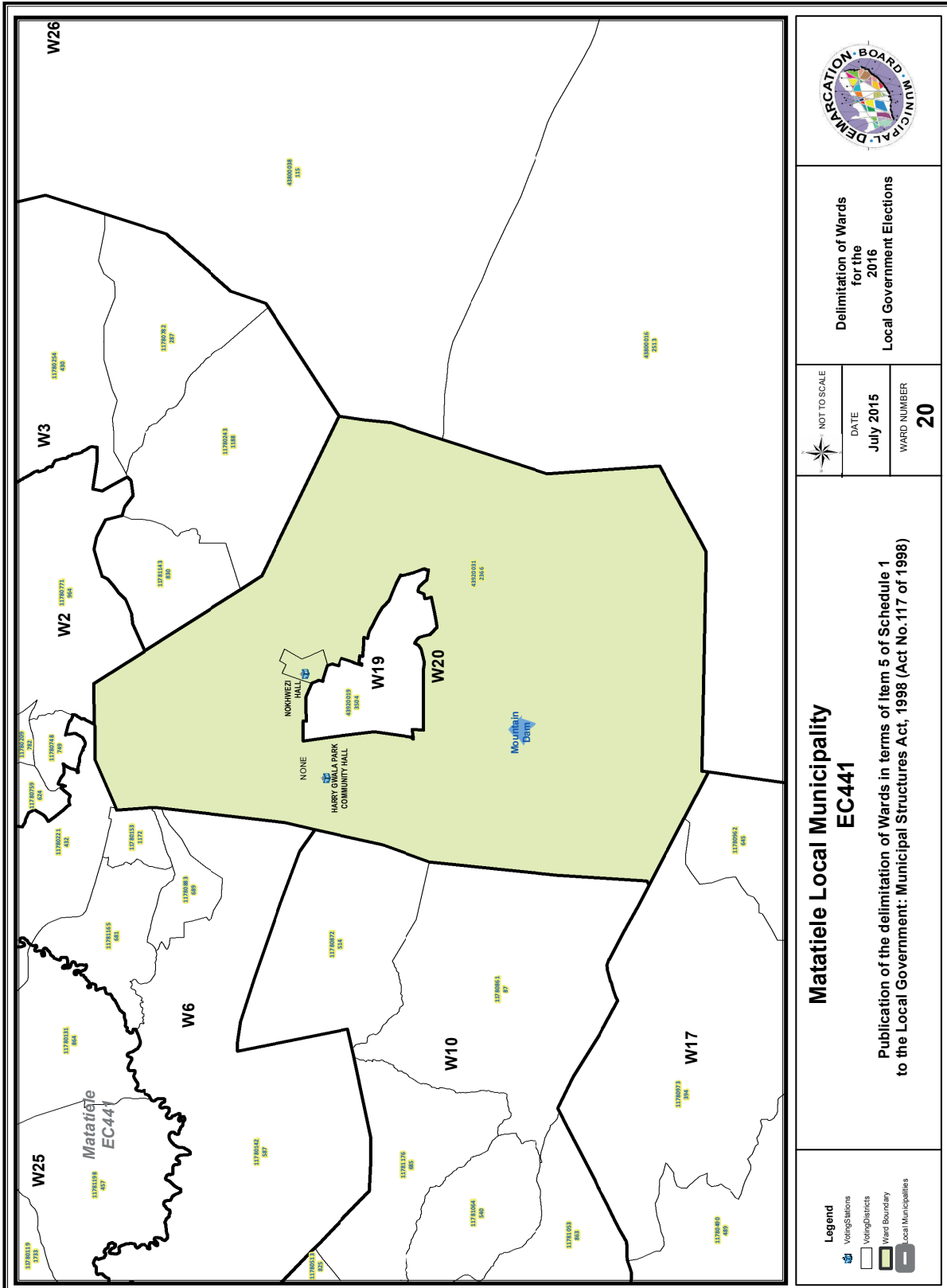
- Legend**
- Voting Stations
  - Voting Districts
  - Ward Boundary
  - Local Municipalities











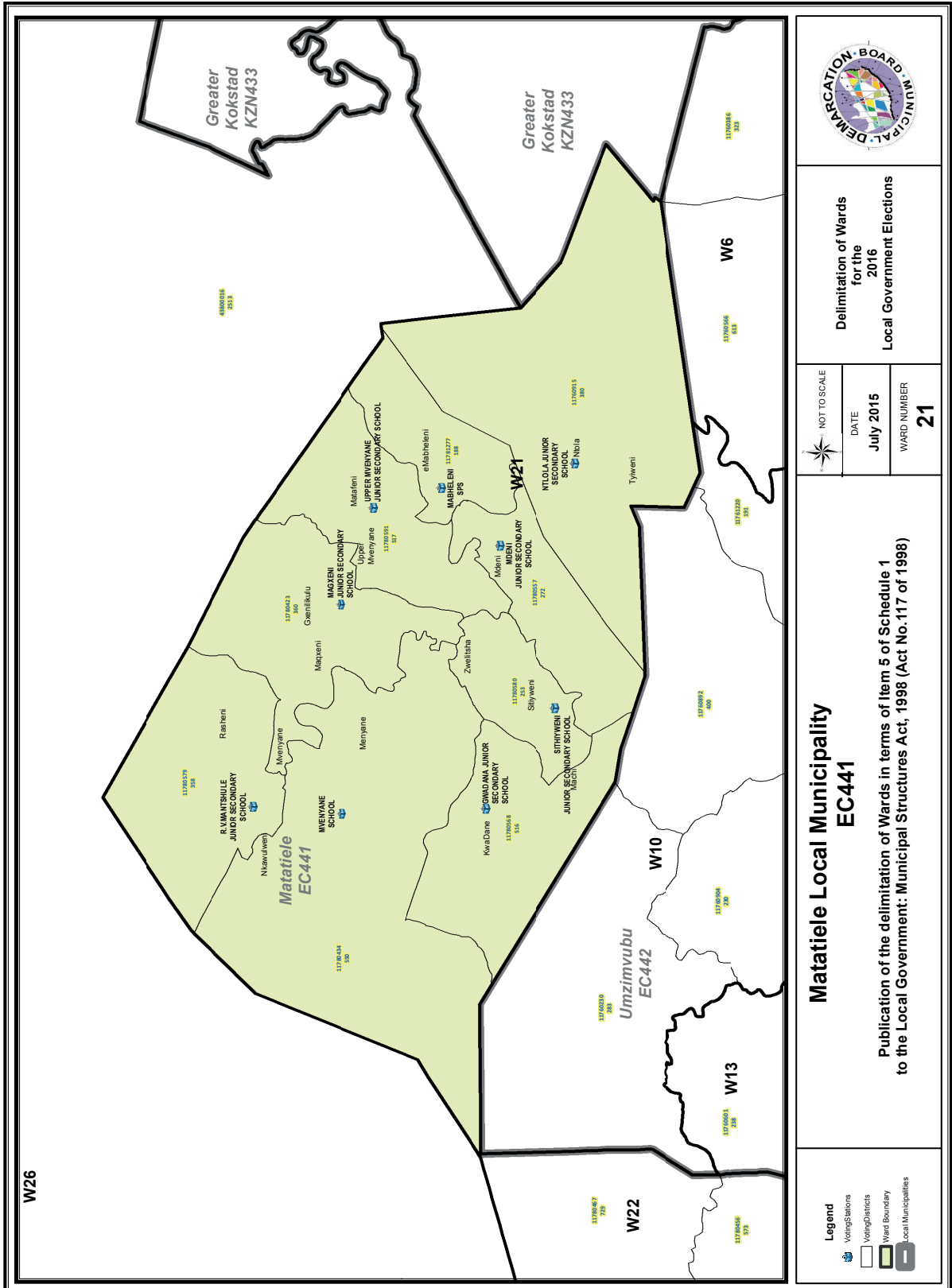
Delimitation of Wards  
for the  
2016  
Local Government Elections

NOT TO SCALE
DATE July 2015
WARD NUMBER 20

**Matatiele Local Municipality  
EC441**

Publication of the delimitation of Wards in terms of Item 5 of Schedule 1  
to the Local Government: Municipal Structures Act, 1998 (Act No. 117 of 1998)

- Legend**
- Voting Stations
  - Voting Districts
  - Ward Boundary
  - Local Municipalities



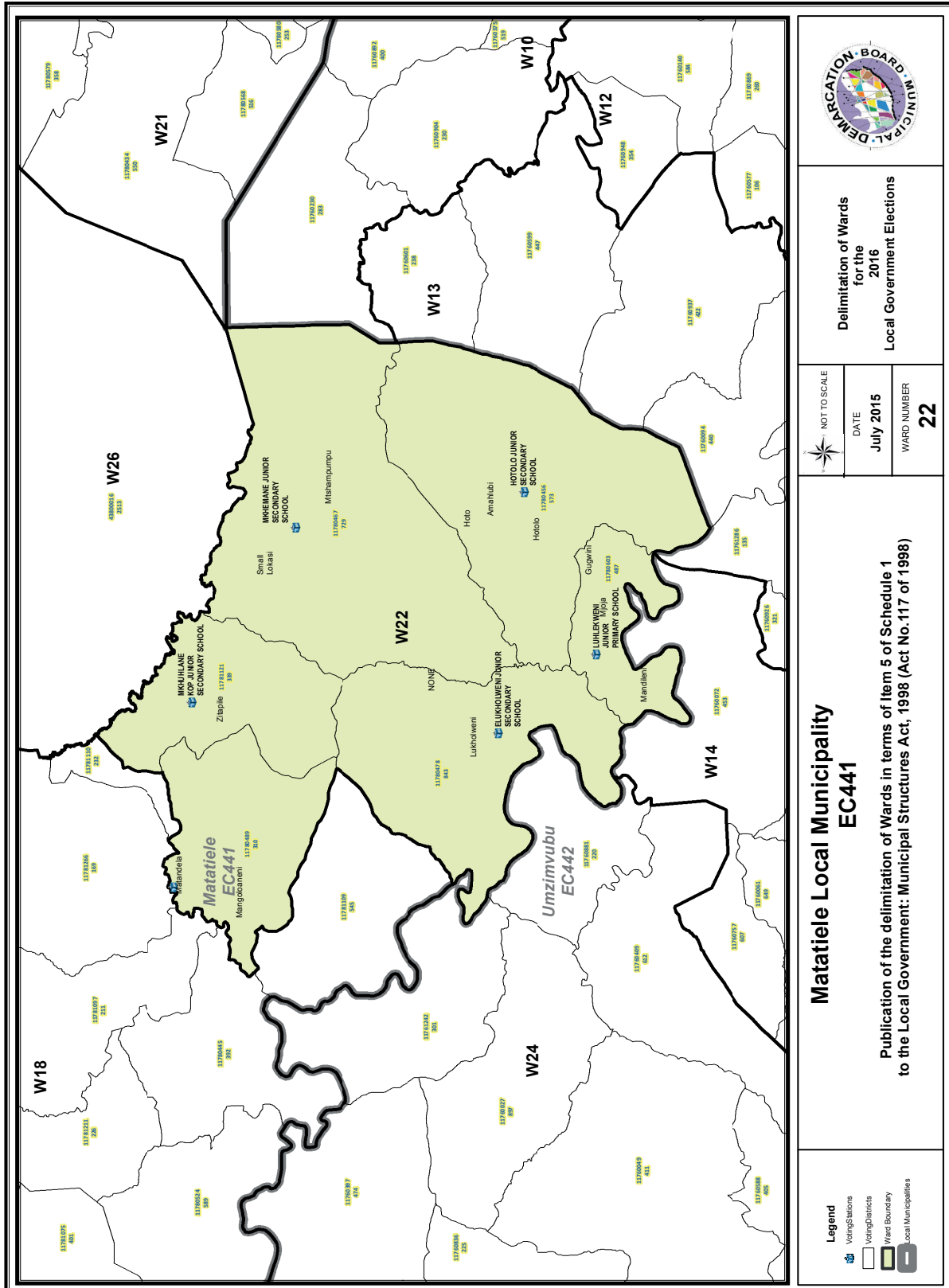
Delimitation of Wards  
for the  
2016  
Local Government Elections

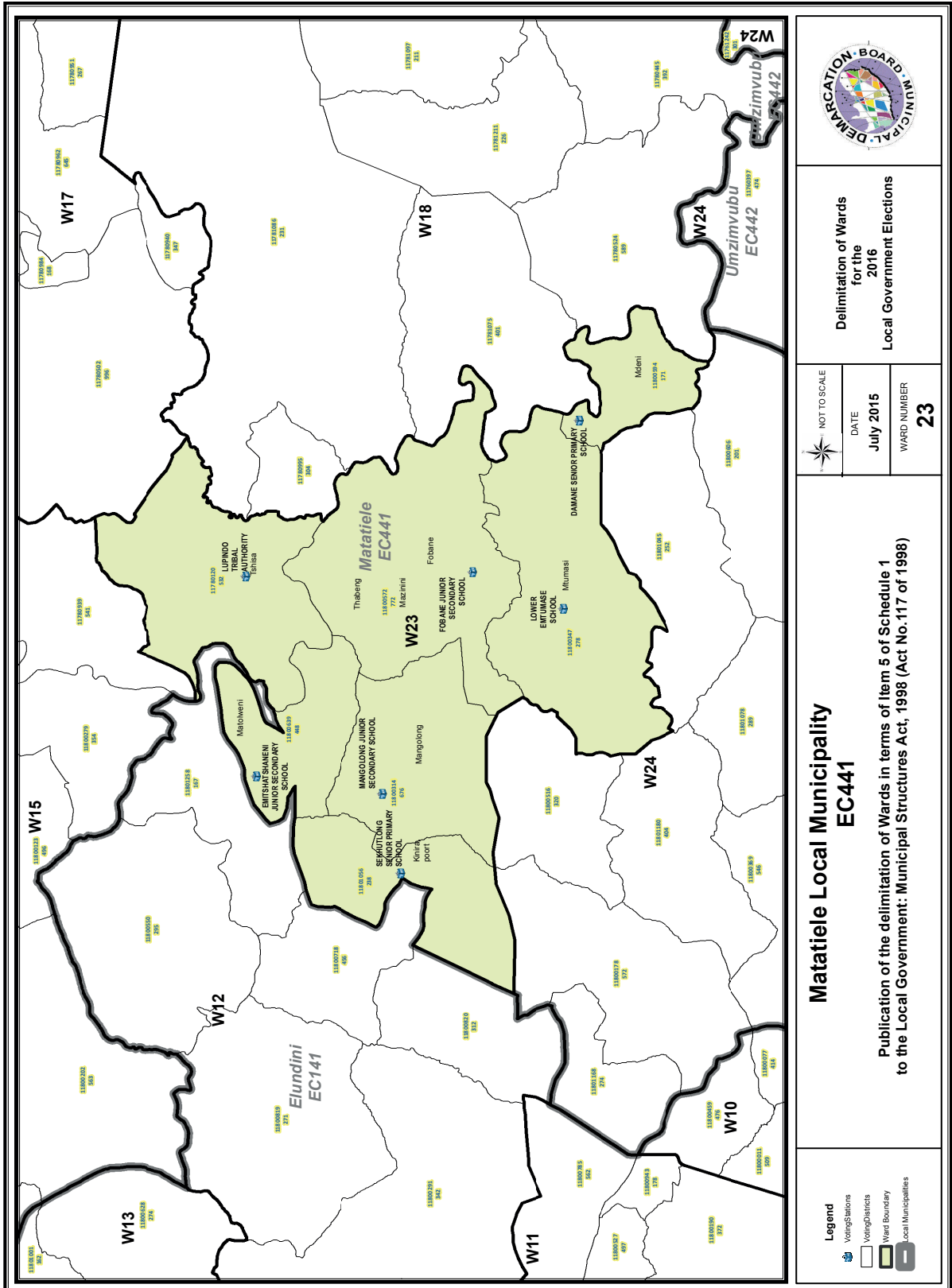
NOT TO SCALE	
DATE	WARD NUMBER
July 2015	21

**Matatiele Local Municipality  
EC441**

Publication of the delimitation of Wards in terms of Item 5 of Schedule 1  
to the Local Government: Municipal Structures Act, 1998 (Act No. 117 of 1998)

- Legend**
- Voting Stations
  - Voting Districts
  - Ward Boundary
  - Local Municipalities





**Legend**

- Voting Stations
- Voting Districts
- Ward Boundary
- Local Municipalities

**Matatiele Local Municipality**  
**EC441**

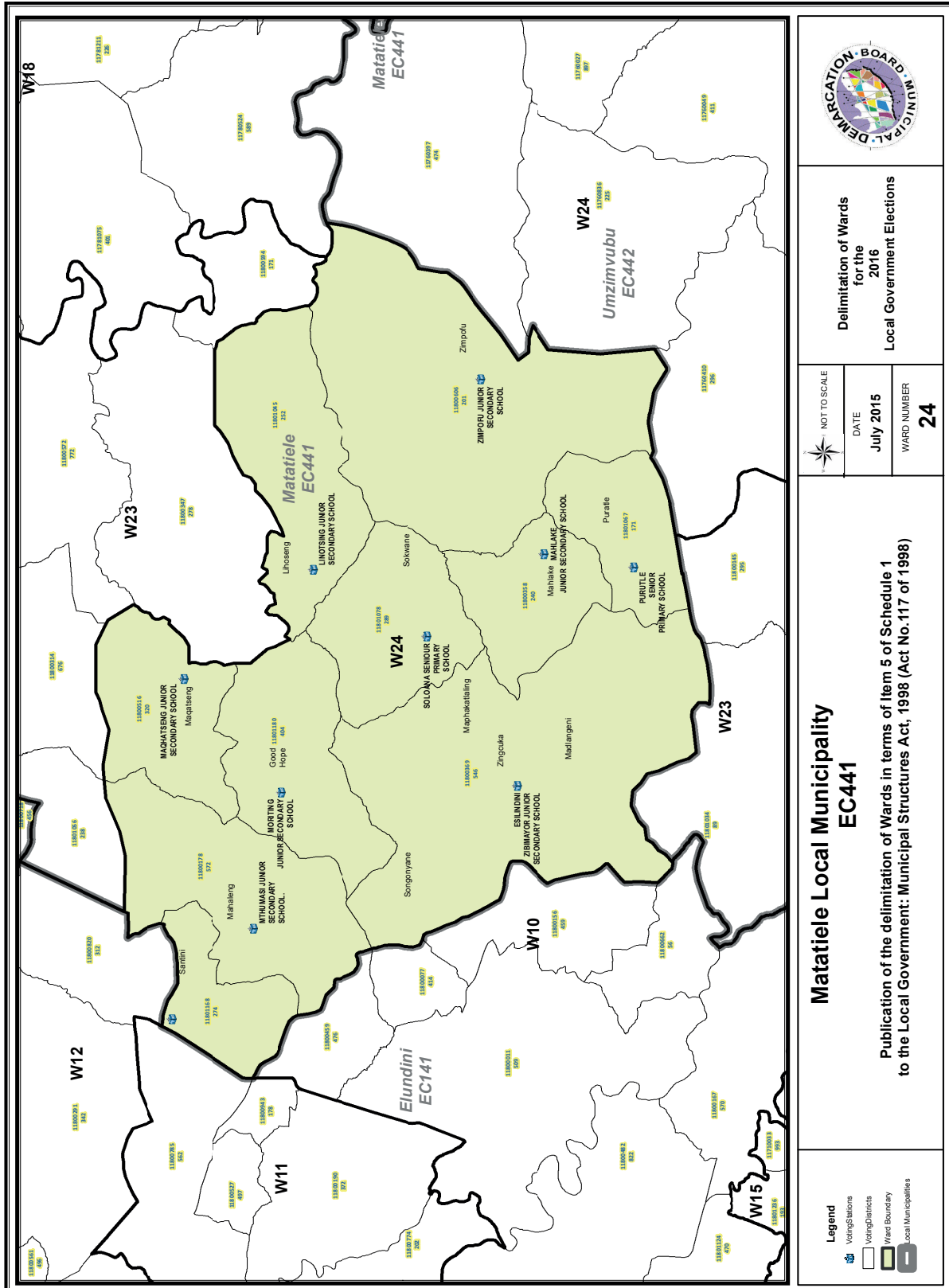
Publication of the delimitation of Wards in terms of Item 5 of Schedule 1 to the Local Government: Municipal Structures Act, 1998 (Act No.117 of 1998)

**Delimitation of Wards for the 2016 Local Government Elections**

NOT TO SCALE

DATE  
**July 2015**

WARD NUMBER  
**23**



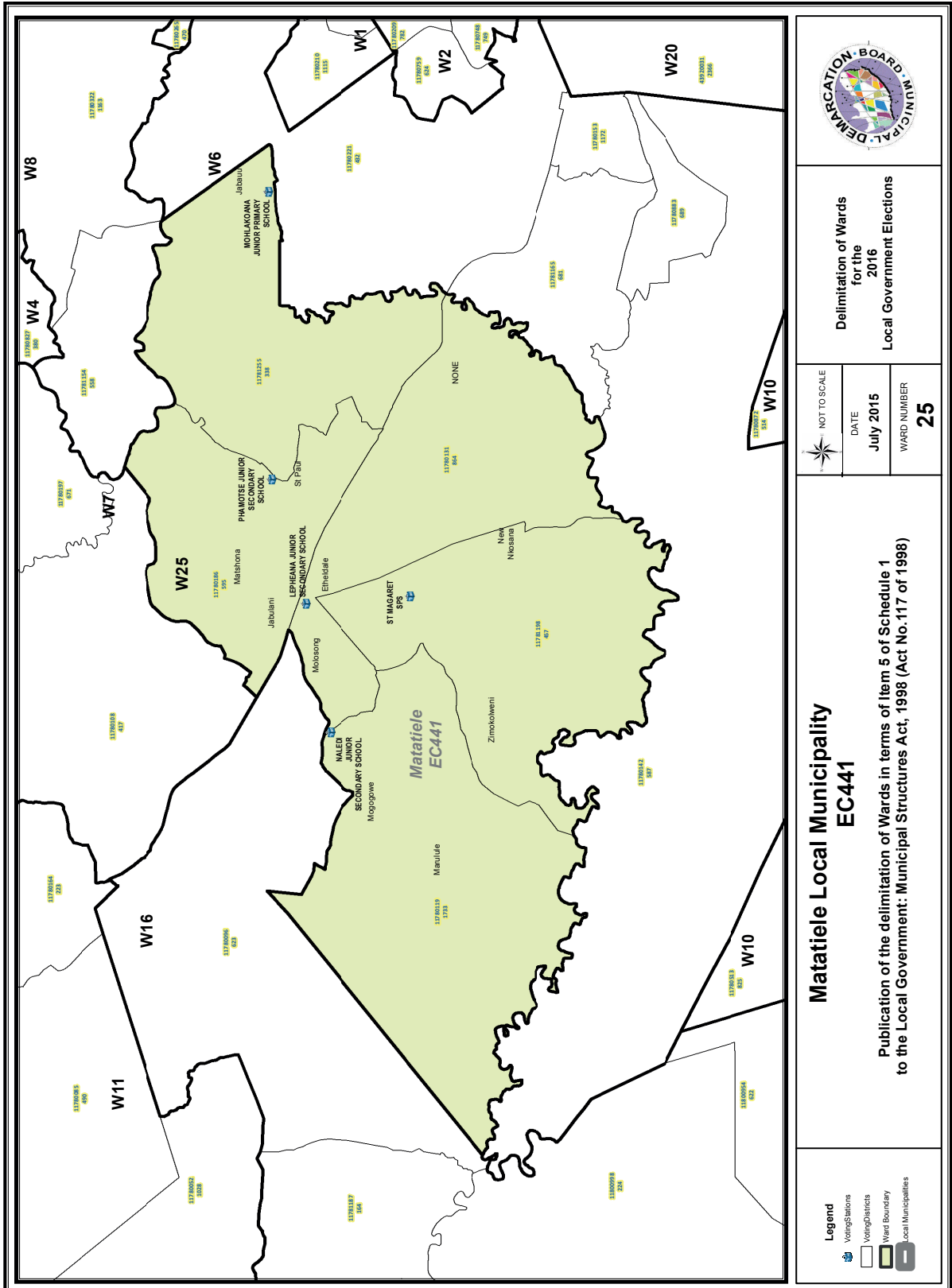
**Delimitation of Wards for the 2016 Local Government Elections**

NOT TO SCALE  
 DATE: July 2015  
 WARD NUMBER: 24

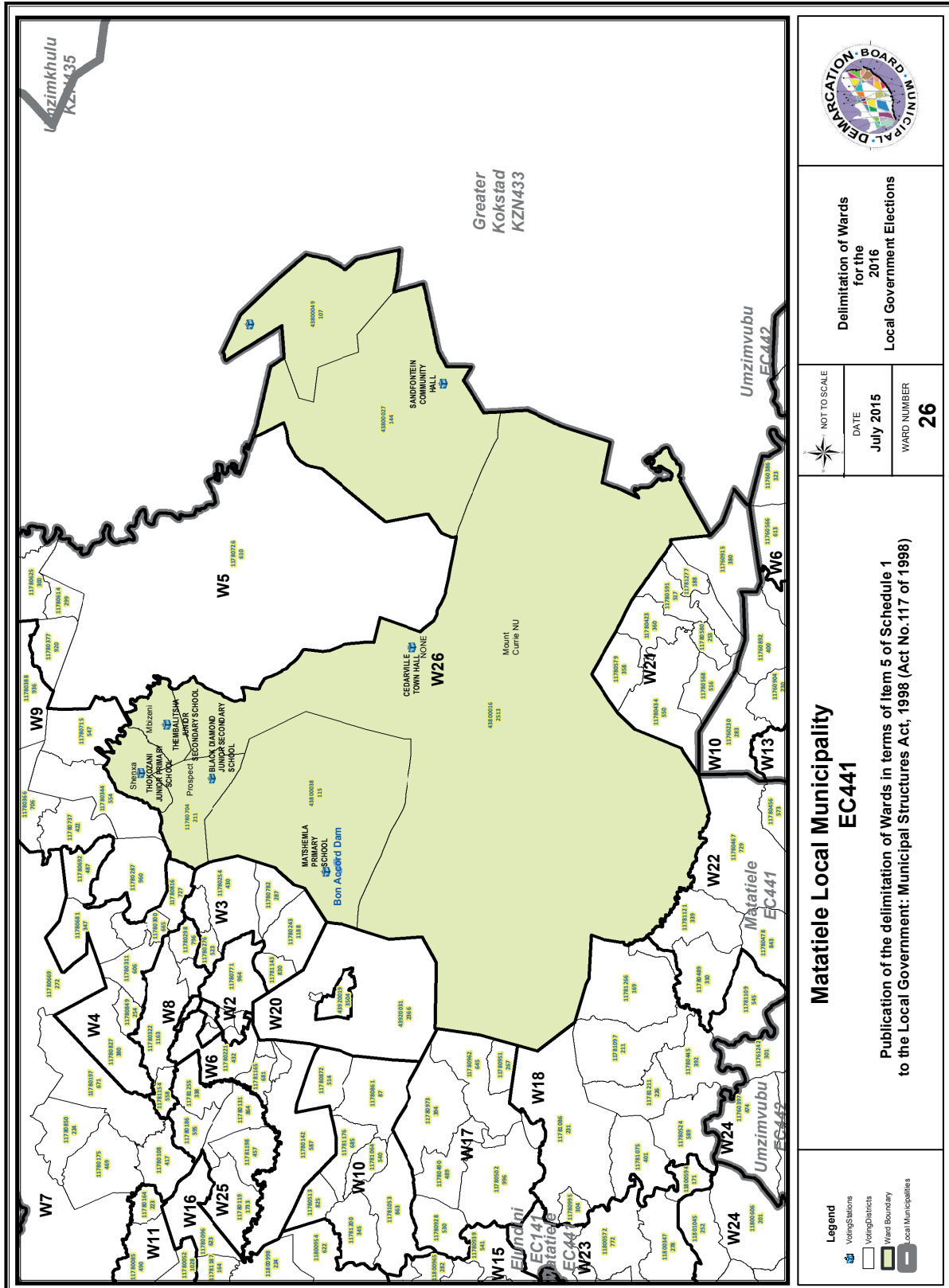
**Matatiele Local Municipality EC441**

Publication of the delimitation of Wards in terms of Item 5 of Schedule 1 to the Local Government: Municipal Structures Act, 1998 (Act No.117 of 1998)

- Legend**
- Voting Stations
  - Voting Districts
  - Ward Boundary
  - Local Municipalities







Delimitation of Wards  
for the  
2016  
Local Government Elections

NOT TO SCALE
DATE July 2015
WARD NUMBER 26

**Matatiele Local Municipality  
EC441**

Publication of the delimitation of Wards in terms of Item 5 of Schedule 1  
to the Local Government: Municipal Structures Act, 1998 (Act No.117 of 1998)

- Legend**
- Voting Stations
  - Voting Districts
  - Ward Boundary
  - Local Municipalities

**FORM/VORM MDB5**

**WARD DELIMITATION/**

**WYKSAFBAKENING**

**OBJECTION IN TERMS OF ITEM 5(2) OF SCHEDULE 1 TO THE LOCAL GOVERNMENT:  
MUNICIPAL STRUCTURES ACT, 1998**

**BESWAAR INGEVOLGE ITEM 5(2) VAN BYLAE 1 VAN DIE WET OP PLAASLIKE REGERING:  
MUNISIPALE STRUKTURE, 1998**

**Name of municipality/ Naam van Munisipaliteit : .....**

**Code/Kode : .....**

**Name of aggrieved person/institution/Naam van beswaarde persoon/instelling :  
.....**

**Contact person in case of an institution/ Kontak persoon in geval van 'n instelling:  
.....**

**Address/Adres: .....**

**Tel. number/ Tel. nommer:.....Cell number/ Selfoonnommer: .....**

**Email address: .....**

PLEASE USE ADDITIONAL PAGE SHOULD THE ALTERNATIVE PROPOSALS BE MORE THAN THE FOLLOWING SPACE AVAILABLE.

I request the Municipal Demarcation Board to consider the following alternative proposals/ Ek versoek die Munisipale Afbakeningsraad om die volgende alternatiewe voorstelle te oorweeg:

Ward number/ Wyk nommer	The ward should comprise of the following voting districts (Provide voting district number and the number of voters in brackets e.g. VD1123456(1500)+VD345678(2500)=4000)/  Die wyk moet bestaan uit die volgende stemdistrikte: (Voorsien die stemdistriknommer en die getal geregistreerde kiesers as volg VD1123456(1500)+VD345678(2500)=4000)	Motivation /Motivering

I confirm that/ Ek bevestig dat:

- each cluster of voting districts form a contiguous ward/ die saamgevoegde stemdistrikte vorm 'n aaneenlopende wyk;
- the number of voters in each ward fall within the minimum and maximum of voters allowed per ward/ die getal kiesers in elke wyk is binne die minimum en maksimum getal wat per wyk toegelaat word;
- the proposed ward boundaries comply, in general, with the criteria/ die voorgestelde wyke voldoen in die algemeen aan die kriteria.

\_\_\_\_\_  
SIGNATURE

\_\_\_\_\_  
NAME AND SURNAME

\_\_\_\_\_  
DATE

# IMPORTANT

## Information

### from Government Printing Works

Dear Valued Customers,

Government Printing Works has implemented rules for completing and submitting the electronic Adobe Forms when you, the customer, submits your notice request.

Please take note of these guidelines when completing your form.

#### GPW Business Rules

1. No hand written notices will be accepted for processing, this includes Adobe forms which have been completed by hand.
2. Notices can only be submitted in Adobe electronic form format to the email submission address [submit.egazette@gpw.gov.za](mailto:submit.egazette@gpw.gov.za). This means that any notice submissions not on an Adobe electronic form that are submitted to this mailbox will be **rejected**. National or Provincial gazette notices, where the Z95 or Z95Prov must be an Adobe form but the notice content (body) will be an attachment.
3. Notices brought into GPW by "walk-in" customers on electronic media can only be submitted in Adobe electronic form format. This means that any notice submissions not on an Adobe electronic form that are submitted by the customer on electronic media will be **rejected**. National or Provincial gazette notices, where the Z95 or Z95Prov must be an Adobe form but the notice content (body) will be an attachment.
4. All customers who walk in to GPW that wish to submit a notice that is not on an electronic Adobe form will be routed to the Contact Centre where the customer will be taken through the completion of the form by a GPW representative. Where a customer walks into GPW with a stack of hard copy notices delivered by a messenger on behalf of a newspaper the messenger must be referred back to the sender as the submission does not adhere to the submission rules.
5. All notice submissions that do not comply with point 2 will be charged full price for the notice submission.
6. The current cut-off of all Gazette's remains unchanged for all channels. (Refer to the GPW website for submission deadlines – [www.gpwonline.co.za](http://www.gpwonline.co.za))
7. Incorrectly completed forms and notices submitted in the wrong format will be rejected to the customer to be corrected and resubmitted. Assistance will be available through the Contact Centre should help be required when completing the forms. (012-748 6200 or email [info.egazette@gpw.gov.za](mailto:info.egazette@gpw.gov.za))
8. All re-submissions by customers will be subject to the above cut-off times.
9. All submissions and re-submissions that miss the cut-off will be rejected to the customer to be submitted with a new publication date.
10. Information on forms will be taken as the primary source of the notice to be published. Any instructions that are on the email body or covering letter that contradicts the notice form content will be ignored.

You are therefore advised that effective from **Monday, 18 May 2015** should you not comply with our new rules of engagement, all notice requests will be rejected by our new system.

Furthermore, the fax number **012- 748 6030** will also be **discontinued** from this date and customers will only be able to submit notice requests through the email address [submit.egazette@gpw.gov.za](mailto:submit.egazette@gpw.gov.za).



Printed by and obtainable from the Government Printer, Bosman Street, Private Bag X85, Pretoria, 0001.  
 Contact Centre Tel: 012-748 6200. eMail: [info.egazette@gpw.gov.za](mailto:info.egazette@gpw.gov.za)  
 Also available at the Legal Advisory Services, **Province of the Eastern Cape**, Private Bag X0047, Bisho, 5605.  
 Tel. (040) 635-0052.