



PROVINCE OF THE EASTERN CAPE  
IPHONDO LEMPUMA KOLONI  
PROVINSIE OOS-KAAP

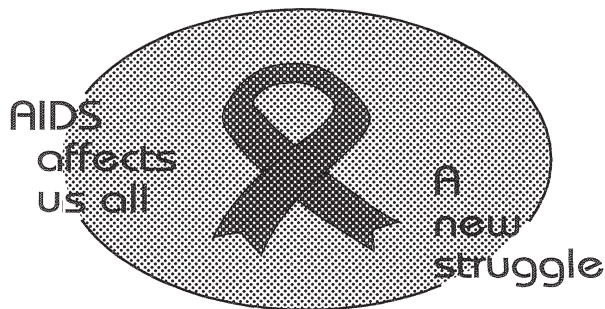
**Provincial Gazette  
Igazethi Yephondo  
Provinsiale Koerant  
(Extraordinary)**

Vol. 22

BISHO/  
KING WILLIAM'S TOWN, 22 JULY 2015

No. 3433

**We all have the power to prevent AIDS**



**AIDS  
HELPLINE**

**0800 012 322**

DEPARTMENT OF HEALTH

**Prevention is the cure**

*N.B. The Government Printing Works will not be held responsible for the quality of "Hard Copies" or "Electronic Files" submitted for publication purposes*

ISSN 1682-4556



9 771682 455006

03433



# IMPORTANT

## Information

### from Government Printing Works

Dear Valued Customers,

Government Printing Works has implemented rules for completing and submitting the electronic Adobe Forms when you, the customer, submits your notice request.

Please take note of these guidelines when completing your form.



#### GPW Business Rules

1. No hand written notices will be accepted for processing, this includes Adobe forms which have been completed by hand.
2. Notices can only be submitted in Adobe electronic form format to the email submission address [submit.egazette@gpw.gov.za](mailto:submit.egazette@gpw.gov.za). This means that any notice submissions not on an Adobe electronic form that are submitted to this mailbox will be **rejected**. National or Provincial gazette notices, where the Z95 or Z95Prov must be an Adobe form but the notice content (body) will be an attachment.
3. Notices brought into GPW by "walk-in" customers on electronic media can only be submitted in Adobe electronic form format. This means that any notice submissions not on an Adobe electronic form that are submitted by the customer on electronic media will be **rejected**. National or Provincial gazette notices, where the Z95 or Z95Prov must be an Adobe form but the notice content (body) will be an attachment.
4. All customers who walk in to GPW that wish to submit a notice that is not on an electronic Adobe form will be routed to the Contact Centre where the customer will be taken through the completion of the form by a GPW representative. Where a customer walks into GPW with a stack of hard copy notices delivered by a messenger on behalf of a newspaper the messenger must be referred back to the sender as the submission does not adhere to the submission rules.
5. All notice submissions that do not comply with point 2 will be charged full price for the notice submission.
6. The current cut-off of all Gazette's remains unchanged for all channels. (Refer to the GPW website for submission deadlines – [www.gpwonline.co.za](http://www.gpwonline.co.za))
7. Incorrectly completed forms and notices submitted in the wrong format will be rejected to the customer to be corrected and resubmitted. Assistance will be available through the Contact Centre should help be required when completing the forms. (012-748 6200 or email [info.egazette@gpw.gov.za](mailto:info.egazette@gpw.gov.za))
8. All re-submissions by customers will be subject to the above cut-off times.
9. All submissions and re-submissions that miss the cut-off will be rejected to the customer to be submitted with a new publication date.
10. Information on forms will be taken as the primary source of the notice to be published. Any instructions that are on the email body or covering letter that contradicts the notice form content will be ignored.

You are therefore advised that effective from **Monday, 18 May 2015** should you not comply with our new rules of engagement, all notice requests will be rejected by our new system.

Furthermore, the fax number **012- 748 6030** will also be **discontinued** from this date and customers will only be able to submit notice requests through the email address [submit.egazette@gpw.gov.za](mailto:submit.egazette@gpw.gov.za).

**DISCLAIMER:**

Government Printing Works reserves the right to apply the 25% discount to all Legal and Liquor notices that comply with the business rules for notice submissions for publication in gazettes.

National, Provincial, Road Carrier Permits and Tender notices will pay the price as published in the Government Gazettes.

For any information, please contact the eGazette Contact Centre on 012-748 6200 or email [info.egazette@gpw.gov.za](mailto:info.egazette@gpw.gov.za)

**Table of Contents**

<i>No.</i>		<i>Gazette No.</i>	<i>Page No.</i>
<b>PROVINCIAL NOTICES • PROVINSIALE KENNISGEWINGS</b>			
50	Local Government: Municipal Structures Act (117/1998): Municipal Demarcation Board: Delimitation of municipal wards: Mhlontlo Local Municipality (EC156).....	3433	4
50	Wet Op Plaaslike Regering: Munisipale Strukture (117/1998): Munisipale Afbakeningsraad: Afbakening van munisipale wyke: Mhlontlo Local Municipality (EC156).....	3433	5

---

**PROVINCIAL NOTICES • PROVINSIALE KENNISGEWINGS**

---

**PROVINCIAL NOTICE 50 OF 2015****MUNICIPAL DEMARCATION BOARD : DELIMITATION OF  
MUNICIPAL WARDS IN TERMS OF THE LOCAL  
GOVERNMENT : MUNICIPAL STRUCTURES ACT, 1998.****Mhlontlo Local Municipality  
EC156**

In terms of Item 5 (1) of Schedule 1 to the Local Government: Municipal Structures Act, 1998 (Act No. 117 of 1998) (the Act) the Municipal Demarcation Board hereby publishes its delimitation of wards for the above-mentioned municipality. Particulars of the delimitation are listed in the Schedule.

In terms of Item 5 (2) of Schedule 1 to the Act, any person aggrieved by the delimitation may, within 14 days of publication of this notice, submit objections in writing to:

The Municipal Demarcation Board  
Private Bag X123  
Centurion  
0046

Fax: 086 5248643  
Email: wards@demarcation.org.za

The attached form MDB 5 must please be used to object. The form is also available on [www.demarcation.org.za](http://www.demarcation.org.za)

**MS JANE THUPANA  
CHAIRPERSON: MUNICIPAL DEMARCATION BOARD****SCHEDULE**

In terms of section 18(3) of the Local Government: Municipal Structures Act, 1998 ( Act 117 of 1998), the MEC responsible for local government has determined that the municipal council consists of 51 councillors.

After having consulted the Independent Electoral Commission, The Municipal Demarcation Board has delimited the municipality into 26 wards in terms of Schedule 1 of the Act.

The number of registered voters in each ward does not vary by more than fifteen percent from the norm. The norm was determined by dividing the total number of voters on the municipal segment of the national common voters roll, namely 94297 voters on 5 March 2014, by the number of wards in the municipality.

An overview map of the boundary of the municipality, with the boundaries of the wards within the municipality, and a map of each ward are attached. In case of a discrepancy between the map and this schedule, the map will prevail. The ward numbers, the voting districts and voting stations in each ward, and the number of voters are as follows:

**PROVINSIALE KENNISGEWING 50 VAN 2015****MUNISIPALE AFBAKENINGSRAAD :  
AFBAKENING VAN MUNISIPALE WYKE INGEVOLGE DIE WET OP  
PLAASLIKE REGERING: MUNISIPALE STRUKTURE, 1998****Mhlontlo Local Municipality****EC156**

Ingevolge Item 5(1) van Bylae 1 van die Wet op Plaaslike Regering: Munisipale Strukture, 1998 (Wet No. 117 van 1998) ( die Wet ) publiseer die Munisipale Afbakeningsraad hiermee sy afbakening van wyke vir die bogenaaamde munisipaliteit. Besonderhede van die afbakening is vervat in die Bylae.

Ingevolge item 5(2) van Bylae 1 van die Wet, kan enige persoon wat gegrief is deur 'n afbakening binne 14 dae vanaf publikasie van hierdie kennisgewing skriftelike besware voorlê aan:

Die Munisipale Afbakeningsraad  
Privaatsak X123  
Centurion  
0046

Faks: 086 5248643  
E-pos: wards@demarcation.org.za

Die aangehegte vorm MDB5 moet asseblief gebruik word om beswaar aan te teken. Die vorm is ook beskikbaar op [www.demarcation.org.za](http://www.demarcation.org.za)

**MS JANE THUPANA  
VOORSITTER : MUNISIPALE AFBAKENINGSRAAD****BYLAE**

Ingevolge artikel 18(3) van die Wet op Plaaslike Regering: Munisipale Strukture, 1998 (Wet 117 van 1998) het die LUR vir plaaslike regering bepaal dat die munisipale raad bestaan uit 51 raadslede.

Na oorlegpleging met die Onafhanklike Verkiesingskommissie het die Munisipale Afbakeningsraad die munisipaliteit in 26 wyke afgebaken ingevolge Bylae 1 van die Wet.

Die getal geregistreerde kiesers in elke wyk, wyk nie meer as vyftien persent van die norm af nie. Die norm is bepaal deur die getal geregistreerde kiesers op die munisipale segment van die nasionale gemeenskaplike kieserslys, naamlik 94297 kiesers op 5 Maart 2014, deur die getal wyke in die munisipaliteit te deel.

'n Oorsigkaart van die munisipale grens met die grense van die wyke binne die munisipale grens, en 'n kaart van elke wyk, is aangeheg. Ingeval van 'n verskil tussen 'n kaart en hierdie bylae, sal die kaart geld.

Die wyknommers, die stembedstrikte en stemlokale in elke wyk, en die getal kiesers is as volg:

**Ward 1 comprises of a total of 3621 registered voters.**  
**Wyk 1 bestaan uit 'n totaal van 3621 geregistreerde kiesers.**  
 MIN VOTERS/KIESER 3083 NORM 3627 MAX VOTERS/KIESER 4171

VOTING DISTRICT No. STEMDISTRIK No.	VOTING STATION NAME STEMLOKAAL NAAM	NUMBER OF VOTERS GETAL KIESERS	SPLIT VD VERDEELDE SD
11620662	RICHARD SAMELA JUNIOR SECONDARY SCHOOL	308	
11620358	JENCE JS SCHOOL	657	
11620640	MPOZA JUNIOR SECONDARY SCHOOL	329	
11620673	MADUMALWANO JS SCHOOL	296	
11620178	HOBE SP SCHOOL	248	
11620897	ZWELITSHA JUNIOR SECONDARY SCHOOL	483	
11620314	MBINJA SPS	335	
11620325	BAVUMELENI JS SCHOOL	486	
11620886	ZANEMVULA JUNIOR SECONDARY SCHOOL	319	
11621023	RANUGA S.PS	160	

**Ward 2 comprises of a total of 3246 registered voters.**  
**Wyk 2 bestaan uit 'n totaal van 3246 geregistreerde kiesers.**  
 MIN VOTERS/KIESER 3083 NORM 3627 MAX VOTERS/KIESER 4171

VOTING DISTRICT No. STEMDISTRIK No.	VOTING STATION NAME STEMLOKAAL NAAM	NUMBER OF VOTERS GETAL KIESERS	SPLIT VD VERDEELDE SD
11620752	LANGELIHLE JUNIOR SECONDARY SCHOOL	953	
11620875	MTONYAMENI JUNIOR SECONDARY SCHOOL	329	
11620561	MNQANDANTO JUNIOR SECONDARY SCHOOL	580	
11620246	KAMBI-20	574	
11620594	MQOBISI JUNIOR SECONDARY SCHOOL	810	

**Ward 3 comprises of a total of 3425 registered voters.**  
**Wyk 3 bestaan uit 'n totaal van 3425 geregistreerde kiesers.**  
 MIN VOTERS/KIESER 3083 NORM 3627 MAX VOTERS/KIESER 4171

VOTING DISTRICT No. STEMDISTRIK No.	VOTING STATION NAME STEMLOKAAL NAAM	NUMBER OF VOTERS GETAL KIESERS	SPLIT VD VERDEELDE SD
11620909	JONGIKUNDLA JUNIOR SECONDARY SCHOOL	381	
11620347	PHATHISANANI JSS	499	
11620910	MASIBAMBISANE JUNIOR SECONDARY SCHOOL	330	
11620549	ZANOMTHETHO SCHOOL	198	
11620235	BELE ZINGCUKA TECHNICAL COLLEGE	1161	

11620336 PARISH HALL 856

**Ward 4 comprises of a total of 3273 registered voters.**  
**Wyk 4 bestaan uit 'n totaal van 3273 geregistreerde kiesers.**  
 MIN VOTERS/KIESER 3083 NORM 3627 MAX VOTERS/KIESER 4171

VOTING DISTRICT No. STEMDISTRIK No.	VOTING STATION NAME STEMLOKAAL NAAM	NUMBER OF VOTERS GETAL KIESERS	SPLIT VD VERDEELDE SD
11620516	HLANGANI JUNIOR SECONDARY SCHOOL	401	
11620921	NQADU J.S.S	320	
11620224	GUNGULULU JUNIOR SECONDARY SCHOOL	718	
11620257	LUCINGWENI JUNIOR SECONDARY SCHOOL	392	
11620943	ANGLICAN CHURCH	318	
11620202	METHODIST CHURCH OF SA	532	
11620213	GOTYIBENI JUNIOR SECONDARY SCHOOL	410	
11621034	DUBULINGQANGA SPS	182	

**Ward 5 comprises of a total of 4082 registered voters.**  
**Wyk 5 bestaan uit 'n totaal van 4082 geregistreerde kiesers.**  
 MIN VOTERS/KIESER 3083 NORM 3627 MAX VOTERS/KIESER 4171

VOTING DISTRICT No. STEMDISTRIK No.	VOTING STATION NAME STEMLOKAAL NAAM	NUMBER OF VOTERS GETAL KIESERS	SPLIT VD VERDEELDE SD
11620123	TYENI SCHOOL	526	
11620189	TIKI-TIKI	883	
11620268	NGQWALA SENIOR PRIMARY SCHOOL	390	
11620651	MMANGONKONE J.S.S	345	
11620550	MADWALENI JUNIOR SECONDARY SCHOOL	280	
11620190	XABANE SCHOOL	565	
11620279	GOBINAMBA JSS	424	
11620741	MATYEBA JSS	669	

**Ward 6 comprises of a total of 3978 registered voters.**  
**Wyk 6 bestaan uit 'n totaal van 3978 geregistreerde kiesers.**  
 MIN VOTERS/KIESER 3083 NORM 3627 MAX VOTERS/KIESER 4171

VOTING DISTRICT No. STEMDISTRIK No.	VOTING STATION NAME STEMLOKAAL NAAM	NUMBER OF VOTERS GETAL KIESERS	SPLIT VD VERDEELDE SD
11620112	NOMBIZO SENIOR PRIMARY SCHOOL	840	
11550013	MUNICIPAL COMMUNITY HALL	1208	
11620796	DEPT OF RURAL DEVELOPMENT AND AGRIRIAN REFO	179	

11620134	LOWER GOQWANA JSS	843
11620763	TP FINCA MEMORIAL CHURCH	532
11620505	GUNGQWANA JUNIOR SECONDARY SCHOOL	376

**Ward 7** comprises of a total of 4098 registered voters.  
**Wyk 7** bestaan uit 'n totaal van 4098 geregisteerde kiesers.

MIN VOTERS/KIESER 3083 NORM 3627 MAX VOTERS/KIESER 4171

VOTING DISTRICT No. STEMDISTRIK No.	VOTING STATION NAME STEMLOKAAL NAAM	NUMBER OF VOTERS GETAL KIESERS	SPLIT VD VERDEELDE SD
11620538	MANDELA JUNIOR PRIMARY SCHOOL	788	
11620583	ZWELONKE J.S.S	701	
11620167	GODZI JUNIOR SECONDARY SCHOOL	517	
11620785	LUTUKA SENIOR SECONDARY SCHOOL	533	
11620808	RESIDENCE JUNIOR SECONDARY SCHOOL	1455	
11621045	NTABELANGA J.S.S	104	

**Ward 8** comprises of a total of 3479 registered voters.  
**Wyk 8** bestaan uit 'n totaal van 3479 geregisteerde kiesers.

MIN VOTERS/KIESER 3083 NORM 3627 MAX VOTERS/KIESER 4171

VOTING DISTRICT No. STEMDISTRIK No.	VOTING STATION NAME STEMLOKAAL NAAM	NUMBER OF VOTERS GETAL KIESERS	SPLIT VD VERDEELDE SD
11620820	MHLABATHI JUNIOR SECONDARY SCHOOL	409	
11620965	GOMENI JUNIOR SECONDARY SCHOOL	431	
11620145	MBOKOTWANA JUNIOR SECONDARY SCHOOL	339	
11620392	QEBEYI JUNIOR SECONDARY SCHOOL	399	
11611011	DILIZINTABA HIGH SCHOOL	609	
11620156	MCWAKUMBANA JUNIOR SECONDARY SCHOOL	837	
11620527	DALUKHANYO JUNIOR SECONDARY SCHOOL	455	

**Ward 9** comprises of a total of 3716 registered voters.  
**Wyk 9** bestaan uit 'n totaal van 3716 geregisteerde kiesers.

MIN VOTERS/KIESER 3083 NORM 3627 MAX VOTERS/KIESER 4171

VOTING DISTRICT No. STEMDISTRIK No.	VOTING STATION NAME STEMLOKAAL NAAM	NUMBER OF VOTERS GETAL KIESERS	SPLIT VD VERDEELDE SD
11610267	NOTSWELEBA JUNIOR SECONDARY SCHOOL	616	
11610278	SHAWBURY JUNIOR SECONDARY SCHOOL	966	
11610638	NGQUBUSINI JUNIOR SECONDARY SCHOOL	504	
11610616	MNCETYANA JUNIOR SECONDARY SCHOOL	302	



11610324	LOTANA JUNIOR SECONDARY SCHOOL	945
11610436	LALANI JUNIOR SECONDARY SCHOOL	383

**Ward 10** comprises of a total of 4155 registered voters.  
**Wyk 10** bestaan uit 'n totaal van 4155 geregistreerde kiesers.

MIN VOTERS/KIESER 3083 NORM 3627 MAX VOTERS/KIESER 4171

VOTING DISTRICT No. STEMDISTRIK No.	VOTING STATION NAME STEMLOKAAL NAAM	NUMBER OF VOTERS GETAL KIESERS	SPLIT VD VERDEELDE SD
11610289	GANDANA JUNIOR SECONDARY SCHOOL	640	
11580937	DUMBA JUNIOR SECONDARY SCHOOL	412	
11580926	LUGONQOZA JUNIOR SECONDARY SCHOOL	260	
11580746	TABASE JUNIOR SECONDARY SCHOOL	624	
11580735	NTSONYANA JUNIOR SECONDARY SCHOOL	407	
11580555	NQWILISO SENIOR SECONDARY SCHOOL	639	
11580476	TINA FALLS HALL	592	
11820057	MBOMBO JUNIOR SECONDARY SCHOOL	581	

**Ward 11** comprises of a total of 4053 registered voters.  
**Wyk 11** bestaan uit 'n totaal van 4053 geregistreerde kiesers.

MIN VOTERS/KIESER 3083 NORM 3627 MAX VOTERS/KIESER 4171

VOTING DISTRICT No. STEMDISTRIK No.	VOTING STATION NAME STEMLOKAAL NAAM	NUMBER OF VOTERS GETAL KIESERS	SPLIT VD VERDEELDE SD
11580443	MBONGWENI JUNIOR SECONDARY SCHOOL	630	
11581130	KWAM JUNIOR SECONDARY SCHOOL	584	
11580724	MTIKA JUNIOR SECONDARY SCHOOL	439	
11581073	MPANTAKA SENIOR PRIMARY SCHOOL	368	
11580713	MAGUMBINI JUNIOR SECONDARY SCHOOL	453	
11580432	INDWE JUNIOR SECONDARY SCHOOL	450	
11580465	NKANTI SENIOR PRIMARY SCHOOL	397	
11820642	MAKHOTI JUNIOR SECONDARY SCHOOL	532	
11821395	NDAKANA SCHOOL	200	

**Ward 12** comprises of a total of 3452 registered voters.  
**Wyk 12** bestaan uit 'n totaal van 3452 geregistreerde kiesers.

MIN VOTERS/KIESER 3083 NORM 3627 MAX VOTERS/KIESER 4171

VOTING DISTRICT No. STEMDISTRIK No.	VOTING STATION NAME STEMLOKAAL NAAM	NUMBER OF VOTERS GETAL KIESERS	SPLIT VD VERDEELDE SD
11821306	SA METHODIST CHURCH HALL	432	

11820664	BETHEL PARISH HALL	600
11820668	NCUMBE JUNIOR SECONDARY SCHOOL	941
11821294	JONGIKHAYA JUNIOR SECONDARY SCHOOL	706
11820541	HLABATHI JUNIOR SECONDARY SCHOOL	773

**Ward 13** comprises of a total of 3441 registered voters.  
**Wyk 13** bestaan uit 'n totaal van 3441 geregistreerde kiesers.

MIN VOTERS/KIESER 3083 NORM 3627 MAX VOTERS/KIESER 4171

VOTING DISTRICT No. STEMDISTRIK No.	VOTING STATION NAME STEMLOKAAL NAAM	NUMBER OF VOTERS GETAL KIESERS	SPLIT VD VERDEELDE SD
11580544	MKHAMBENI JUNIOR SECONDARY SCHOOL	418	
11580487	GABAZI JUNIOR SECONDARY SCHOOL	818	
11580454	MZOBOSHE SENIOR PRIMARY SCHOOL	193	
11610201	MORIVIAN CHURCH	671	
11610582	SKOBENI JUNIOR SECONDARY SCHOOL	327	
11820181	NGQONGO JUNIOR SECONDARY SCHOOL	603	
11821126	ZWELISILE JUNIOR SECONDARY SCHOOL	411	

**Ward 14** comprises of a total of 3443 registered voters.  
**Wyk 14** bestaan uit 'n totaal van 3443 geregistreerde kiesers.

MIN VOTERS/KIESER 3083 NORM 3627 MAX VOTERS/KIESER 4171

VOTING DISTRICT No. STEMDISTRIK No.	VOTING STATION NAME STEMLOKAAL NAAM	NUMBER OF VOTERS GETAL KIESERS	SPLIT VD VERDEELDE SD
11610425	ZWELANDILE JUNIOR SECONDARY SCHOOL	254	
11610751	NDWANE JUNIOR SECONDARY SCHOOL	649	
11610661	ZIMBILENI SCHOOL	138	
11610447	LOWER ROZA JUNIOR SECONDARY SCHOOL	595	
11610256	NDASANA JUNIOR SECONDARY SCHOOL	769	
11610245	MVUMELWANO JUNIOR SECONDARY SCHOOL	1038	

**Ward 15** comprises of a total of 3513 registered voters.  
**Wyk 15** bestaan uit 'n totaal van 3513 geregistreerde kiesers.

MIN VOTERS/KIESER 3083 NORM 3627 MAX VOTERS/KIESER 4171

VOTING DISTRICT No. STEMDISTRIK No.	VOTING STATION NAME STEMLOKAAL NAAM	NUMBER OF VOTERS GETAL KIESERS	SPLIT VD VERDEELDE SD
11540012	QUMBU TOWN HALL	2315	
11610414	MARAMBENI JUNIOR SECONDARY SCHOOL	604	
11610672	LUQOLWENI JUNIOR SECONDARY SCHOOL	268	

11611022	THEMBALETHU JUNIOR SECONDARY SCHOOL	326
----------	-------------------------------------	-----

**Ward 16** comprises of a total of 3276 registered voters.  
**Wyk 16** bestaan uit 'n totaal van 3276 geregistreerde kiesers.  
 MIN VOTERS/KIESER 3083 NORM 3627 MAX VOTERS/KIESER 4171

VOTING DISTRICT No. STEMDISTRIK No.	VOTING STATION NAME STEMLOKAAL NAAM	NUMBER OF VOTERS GETAL KIESERS	SPLIT VD VERDEELDE SD
11610199	MTONINTSHI JUNIOR SECONDARY SCHOOL	706	
11610683	LOWER TYIRA JUNIOR SECONDARY SCHOOL	619	
11610694	KONKABI JUNIOR SECONDARY SCHOOL	403	
11610841	TINTWA JUNIOR SECONDARY SCHOOL	714	
11610526	LOWER CULUNCA JUNIOR SECONDARY SCHOOL	345	
11610234	MJIKWENI JUNIOR SECONDARY SCHOOL	489	

**Ward 17** comprises of a total of 3773 registered voters.  
**Wyk 17** bestaan uit 'n totaal van 3773 geregistreerde kiesers.  
 MIN VOTERS/KIESER 3083 NORM 3627 MAX VOTERS/KIESER 4171

VOTING DISTRICT No. STEMDISTRIK No.	VOTING STATION NAME STEMLOKAAL NAAM	NUMBER OF VOTERS GETAL KIESERS	SPLIT VD VERDEELDE SD
11610807	LOWER NGCOLOKENI SENIOR PRIMARY SCHOOL	374	
11611033	MADUKDUDA SENIOR PRIMARY SCHOOL	111	
11610212	ST JOHNS QUMBU PARISH	519	
11610403	NGCOLOKENI JUNIOR SECONDARY SCHOOL	308	
11610504	ZILANDANA PRIMARY SCHOOL	458	
11611044	UPPER TYIRA JUNIOR SECONDARY SCHOOL	525	
11610166	GQUNU JUNIOR SECONDARY SCHOOL	182	
11610177	SANDY MAJEKE SENIOR SECONDARY SCHOOL	746	
11610391	MZUZANTO SENIOR PRIMARY SCHOOL	178	
11760746	MHLANGALA SENIOR PRIMARY SCHOOL	76	
11760544	TSIBIYANA JUNIOR SECONDARY SCHOOL	296	

**Ward 18** comprises of a total of 3603 registered voters.  
**Wyk 18** bestaan uit 'n totaal van 3603 geregistreerde kiesers.  
 MIN VOTERS/KIESER 3083 NORM 3627 MAX VOTERS/KIESER 4171

VOTING DISTRICT No. STEMDISTRIK No.	VOTING STATION NAME STEMLOKAAL NAAM	NUMBER OF VOTERS GETAL KIESERS	SPLIT VD VERDEELDE SD
11610997	NCOTI JUNIOR SECONDARY SCHOOL	410	
11610975	ESITANGAMENI JUNIOR SECONDARY SCHOOL	705	

11610605	ZAMUKULUNGISA SENIOR PRIMARY SCHOOL	461
11610818	KWA-NGXABANE JUNIOR SECONDARY SCHOOL	222
11610964	SKWAYINI JUNIOR SECONDARY SCHOOL	408
11610380	GURA JUNIOR SECONDARY SCHOOL	530
11610100	ST BARTHS HIGH SCHOOL	867

**Ward 19** comprises of a total of 3245 registered voters.  
**Wyk 19** bestaan uit 'n totaal van 3245 geregistreerde kiesers.

MIN VOTERS/KIESER 3083

NORM 3627

MAX VOTERS/KIESER 4171

VOTING DISTRICT No. STEMDISTRIK No.	VOTING STATION NAME STEMLOKAAL NAAM	NUMBER OF VOTERS GETAL KIESERS	SPLIT VD VERDEELDE SD
11610559	MANZOTHUKELA JUNIOR SECONDARY SCHOOL	95	
11610773	NYANISWENI SCHOOL	290	
11610830	MBAMBISA TECHNICAL SCHOOL	787	
11610920	MTONDELA SENIOR PRIMARY SCHOOL	85	
11611190	TUKELA J.S.S	266	
11610560	MDABUKWENI JUNIOR SECONDARY SCHOOL	211	
11610357	MTENGWANE SENIOR SECONDARY SCHOOL	301	
11610368	NONYIKILA JUNIOR SECONDARY SCHOOL	438	
11610065	NOTHINTSI JUNIOR SECONDARY SCHOOL	314	
11610054	NYWARA (LWANDLANA) JUNIOR SECONDARY SCHO	458	

**Ward 20** comprises of a total of 3212 registered voters.  
**Wyk 20** bestaan uit 'n totaal van 3212 geregistreerde kiesers.

MIN VOTERS/KIESER 3083

NORM 3627

MAX VOTERS/KIESER 4171

VOTING DISTRICT No. STEMDISTRIK No.	VOTING STATION NAME STEMLOKAAL NAAM	NUMBER OF VOTERS GETAL KIESERS	SPLIT VD VERDEELDE SD
11610021	ETWA JUNIOR SECONDARY SCHOOL	452	
11610346	ANGLICAN CHURCH	315	
11610537	NTIBANE COMPREHENSIVE SCHOOL	242	
11610548	MALAMLELA SENIOR PRIMARY SCHOOL	150	
11610043	QOTIRHA JUNIOR SECONDARY SCHOOL	515	
11610032	KUBUSIE JUNIOR SECONDARY SCHOOL	383	
11610515	MJIKELWENI	270	
11610379	XABADIYA JUNIOR SECONDARY SCHOOL	455	
11610010	MILLANI JUNIOR SECONDARY SCHOOL	239	
11611101	KAMASTONE JUNIOR SECONDARY SCHOOL	191	

**Ward 21 comprises of a total of 3517 registered voters.**  
**Wyk 21 bestaan uit 'n totaal van 3517 geregistreerde kiesers.**  
 MIN VOTERS/KIESER 3083 NORM 3627 MAX VOTERS/KIESER 4171

VOTING DISTRICT No. STEMDISTRIK No.	VOTING STATION NAME STEMLOKAAL NAAM	NUMBER OF VOTERS GETAL KIESERS	SPLIT VD VERDEELDE SD
11610919	ST JOHNS APOSTLIC CHURCH	176	
11610098	NTABASIGOGO CHURCH	583	
11610087	SULENKAMA SENIOR SECONDARY SCHOOL	1105	
11611099	EMPHEHLO JUNIOR SECONDARY SCHOOL	196	
11610986	DUMANENI JUNIOR SECONDARY SCHOOL	360	
11611178	GWADANA ANGLICAN CHURCH	324	
11610706	MALADINI JUNIOR SECONDARY SCHOOL	127	
11610739	SANGQU JUNIOR SECONDARY SCHOOL	410	
11610155	NYANGO JUNIOR SECONDARY SCHOOL	236	

**Ward 22 comprises of a total of 3335 registered voters.**  
**Wyk 22 bestaan uit 'n totaal van 3335 geregistreerde kiesers.**  
 MIN VOTERS/KIESER 3083 NORM 3627 MAX VOTERS/KIESER 4171

VOTING DISTRICT No. STEMDISTRIK No.	VOTING STATION NAME STEMLOKAAL NAAM	NUMBER OF VOTERS GETAL KIESERS	SPLIT VD VERDEELDE SD
11610852	NKONKWENI JUNIOR SECONDARY SCHOOL	296	
11610470	CABA JUNIOR SECONDARY SCHOOL	251	
11611189	ENGCOTI ANGLICAN CHURCH	90	
11611156	KWANTABANKULU	164	
11611112	LUXENI JUNIOR SECONDARY SCHOOL	165	
11610942	BUHLEBELIZWE JUNIOR SECONDARY SCHOOL	310	
11610896	NGQAKAQENI JUNIOR SECONDARY SCHOOL	143	
11610762	KRANCOLO JUNIOR SECONDARY SCHOOL	175	
11610122	SHUKUNXA JUNIOR SECONDARY SCHOOL	384	
11610133	DETYANA JUNIOR SECONDARY SCHOOL	359	
11610740	GUNGQWANA JUNIOR SECONDARY SCHOOL	316	
11610144	ZWELIVUMILE JUNIOR SECONDARY SCHOOL	472	
11610829	GQUKUNQA JUNIOR SECONDARY SCHOOL	210	

**Ward 23 comprises of a total of 4046 registered voters.**  
**Wyk 23 bestaan uit 'n totaal van 4046 geregistreerde kiesers.**  
 MIN VOTERS/KIESER 3083 NORM 3627 MAX VOTERS/KIESER 4171

VOTING DISTRICT No. STEMDISTRIK No.	VOTING STATION NAME STEMLOKAAL NAAM	NUMBER OF VOTERS GETAL KIESERS	SPLIT VD VERDEELDE SD
11610111	CHOKOMFENI JUNIOR SECONDARY SCHOOL	791	
11610784	LINGELIHLE JUNIOR SECONDARY SCHOOL	497	
11610795	BALASI JUNIOR SECONDARY SCHOOL	802	
11610223	NXANXADI JUNIOR SECONDARY SCHOOL	557	
11610188	BELEKENCE JUNIOR SECONDARY SCHOOL	477	
11610728	MIDDLETYIRA JUNIOR SECONDARY SCHOOL	377	
11611123	KANYALANGA JUNIOR SECONDARY SCHOOL	545	

**Ward 24** comprises of a total of 3549 registered voters.  
**Wyk 24** bestaan uit 'n totaal van 3549 geregistreerde kiesers.  
 MIN VOTERS/KIESER 3083 NORM 3627 MAX VOTERS/KIESER 4171

VOTING DISTRICT No. STEMDISTRIK No.	VOTING STATION NAME STEMLOKAAL NAAM	NUMBER OF VOTERS GETAL KIESERS	SPLIT VD VERDEELDE SD
11620088	MAGUTYWA SCHOOL	970	
11620077	UPPER MALEPE-LEPE	704	
11620471	NDZEBE JUNIOR SECONDARY SCHOOL	351	
11610469	NXOTWE JUNIOR SECONDARY SCHOOL	434	
11620099	LOWER MALE-PELEPE	685	
11610458	CEKWAYO SCHOOL	405	

**Ward 25** comprises of a total of 3907 registered voters.  
**Wyk 25** bestaan uit 'n totaal van 3907 geregistreerde kiesers.  
 MIN VOTERS/KIESER 3083 NORM 3627 MAX VOTERS/KIESER 4171

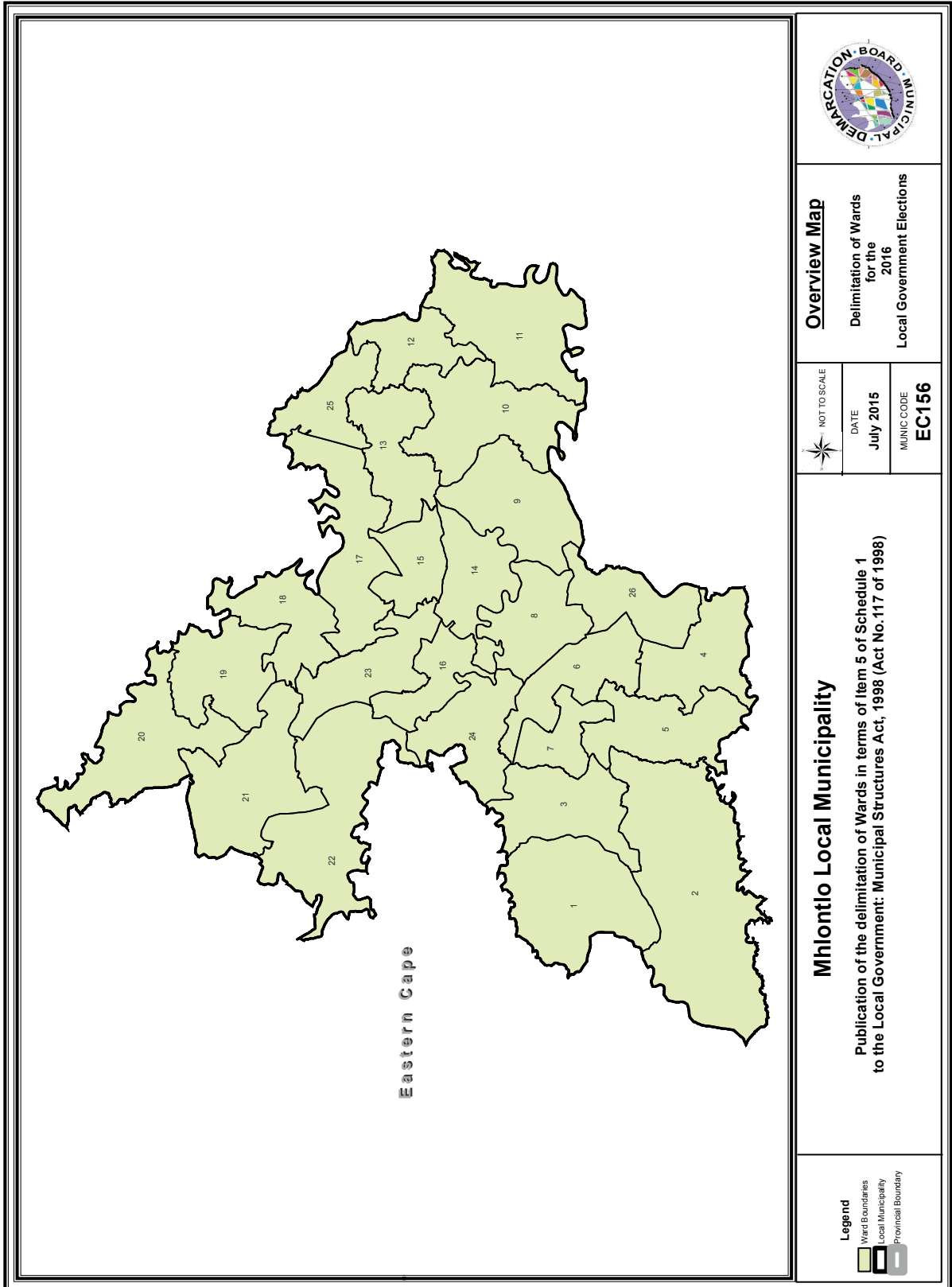
VOTING DISTRICT No. STEMDISTRIK No.	VOTING STATION NAME STEMLOKAAL NAAM	NUMBER OF VOTERS GETAL KIESERS	SPLIT VD VERDEELDE SD
11821115	SIYOYO JUNIOR SECONDARY SCHOOL	468	
11820226	KOLISAVILLE JUNIOR SECONDARY SCHOOL	424	
11761051	SIZWE JUNIORPRIMARY SCHOOL	325	
11820192	TOLWENI SENIOR SECONDARY SCHOOL	1200	
11820596	NGWAYIBANJWA JUNIOR SECONDARY SCHOOL	453	
11820079	BUWA JUNIOR SECONDARY SCHOOL	565	
11820574	SAMARIA JUNIOR SECONDARY SCHOOL	472	

**Ward 26** comprises of a total of 3859 registered voters.  
**Wyk 26** bestaan uit 'n totaal van 3859 geregistreerde kiesers.  
 MIN VOTERS/KIESER 3083 NORM 3627 MAX VOTERS/KIESER 4171

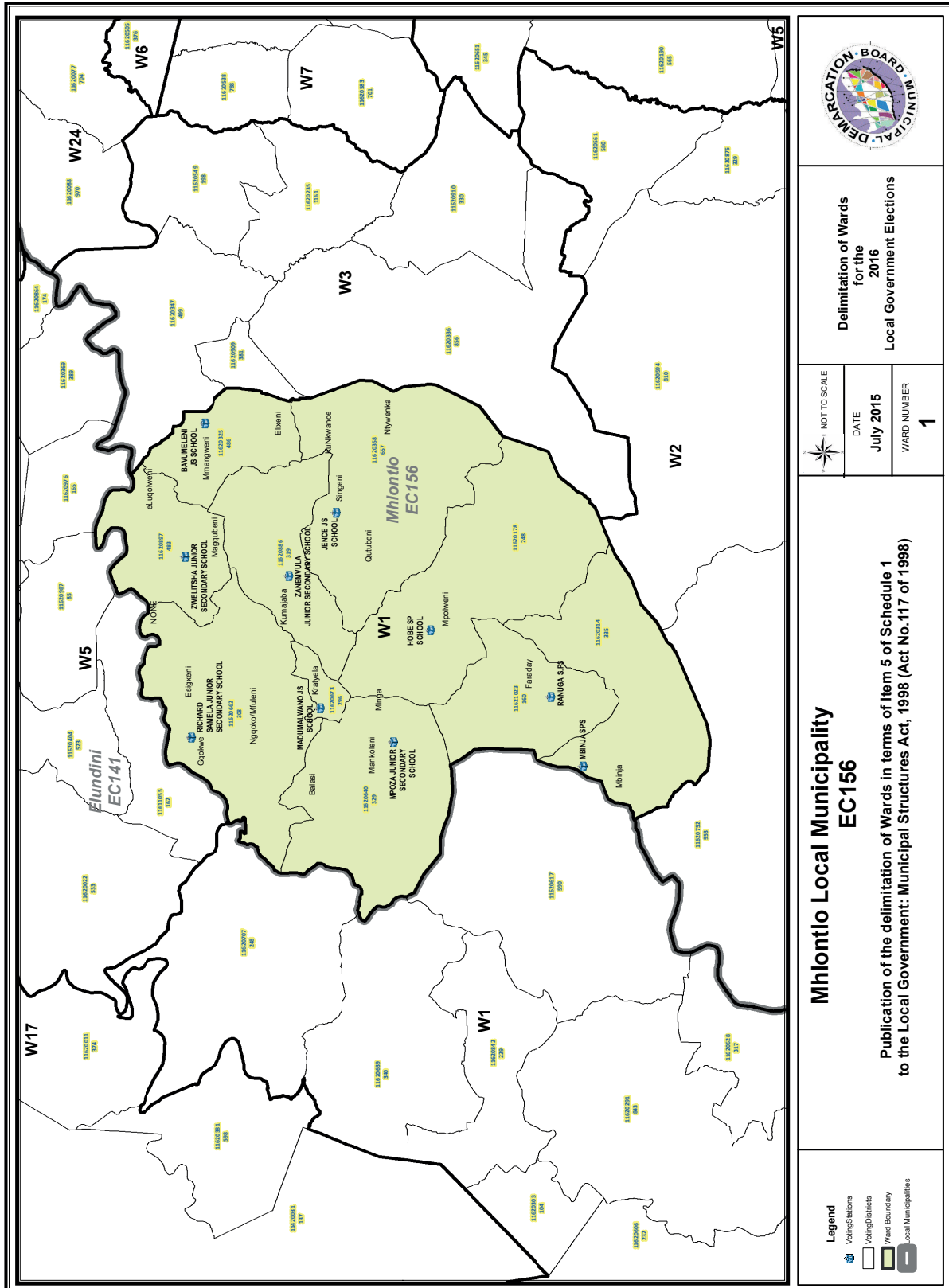
---

<b>VOTING DISTRICT No. STEMDISTRIK No.</b>	<b>VOTING STATION NAME STEMLOKAAL NAAM</b>	<b>NUMBER OF VOTERS GETAL KIESERS</b>	<b>SPLIT VD VERDEELDE SD</b>
11620932	MCHATU JUNIOR SECONDARY SCHOOL	812	
11620415	MHLAKULO JUNIOR SECONDARY SCHOOL	764	
11620426	CINGCO JUNIOR SECONDARY SCHOOL	372	
11620729	MBUTHO( LEPPAN) JUNIOR SECONDARY SCHOOL	534	
11620718	SIDWADWENI JUNIOR SECONDARY SCHOOL	564	
11610627	UPPER LOTANA JUNIOR SECONDARY SCHOOL	552	
11620954	VUKANI KUSILE JUNIOR SECONDARY SCHOOL	261	

---







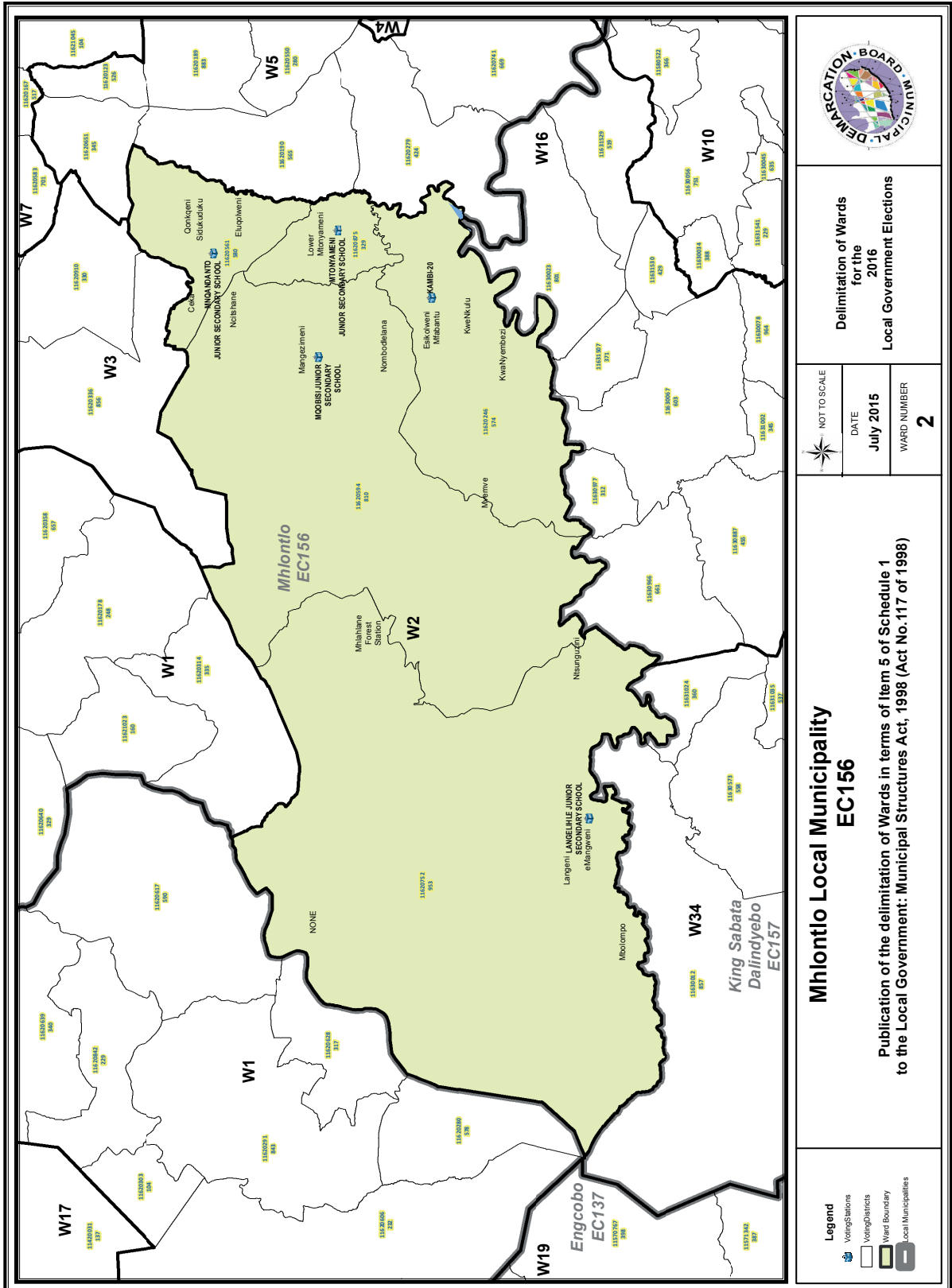
Delimitation of Wards  
for the  
2016  
Local Government Elections

NOT TO SCALE  
DATE  
July 2015  
WARD NUMBER  
1

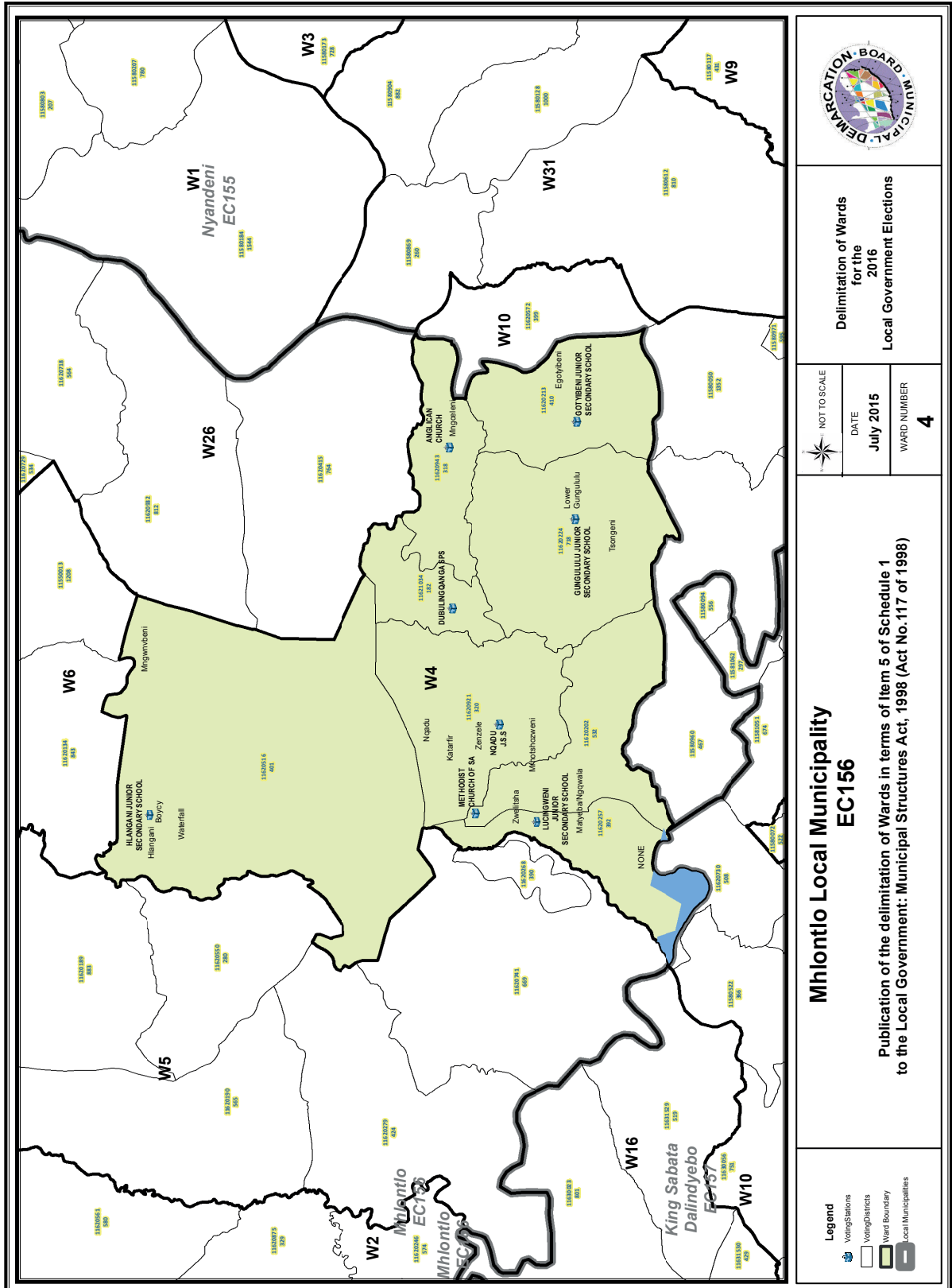
**Mhiontlo Local Municipality  
EC156**

Publication of the delimitation of Wards in terms of Item 5 of Schedule 1  
to the Local Government: Municipal Structures Act, 1998 (Act No.117 of 1998)

- Legend**
- Voting Stations
  - Voting Districts
  - Ward Boundary
  - Local Municipalities







**Mhiontlo Local Municipality**  
**EC156**

Publication of the delimitation of Wards in terms of Item 5 of Schedule 1 to the Local Government: Municipal Structures Act, 1998 (Act No.117 of 1998)

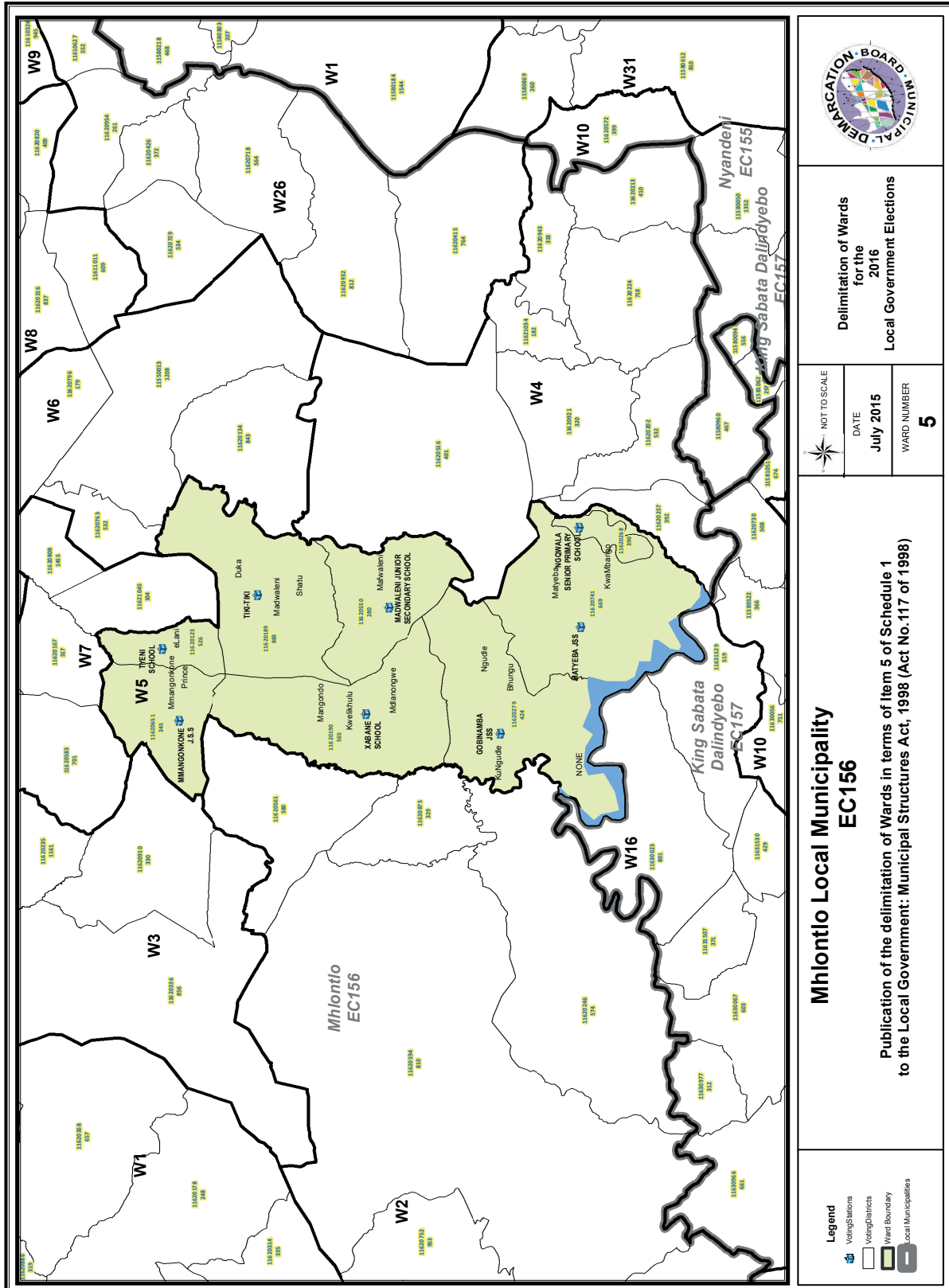
**Delimitation of Wards**  
for the  
**2016**  
**Local Government Elections**

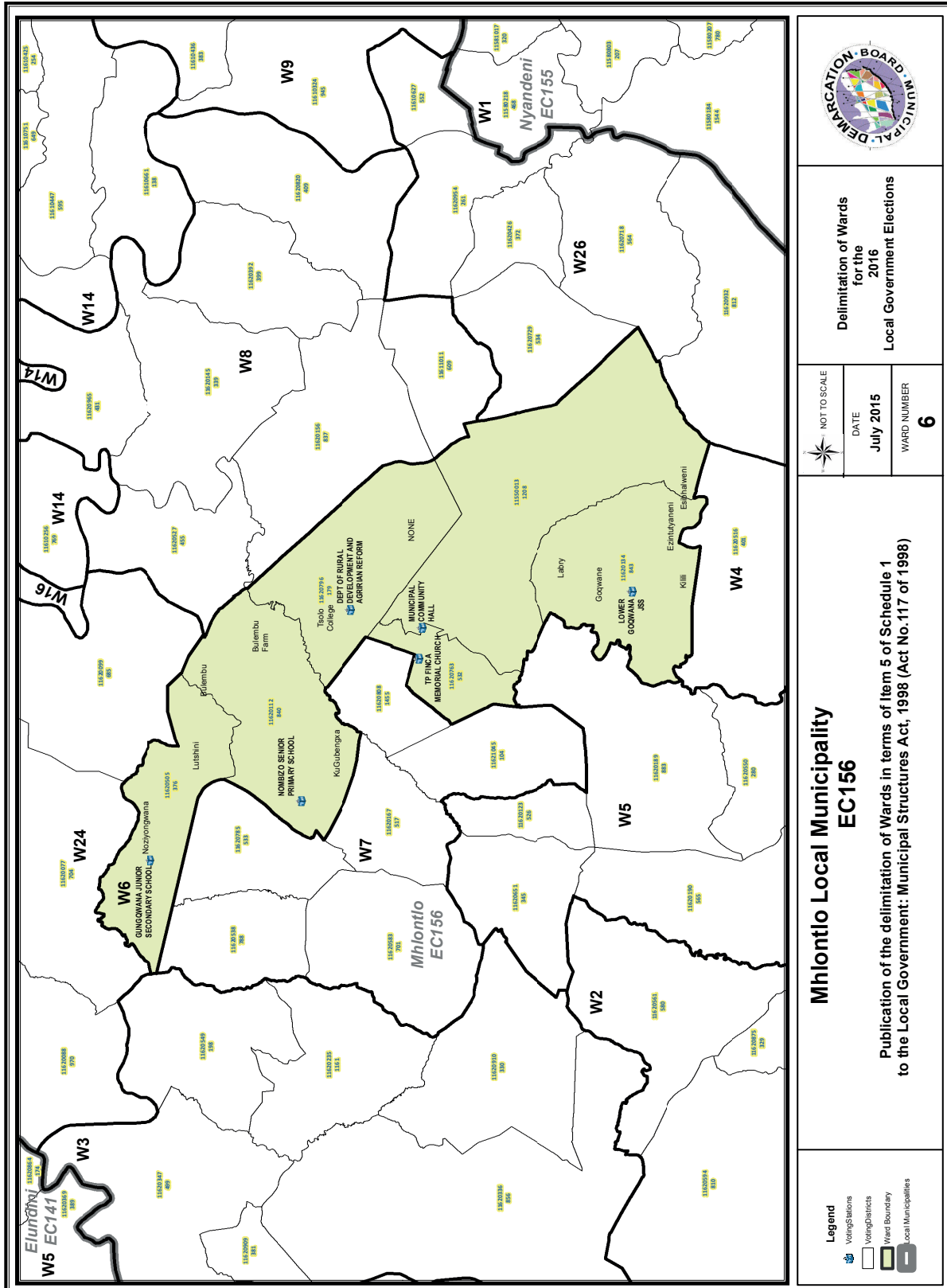
NOT TO SCALE

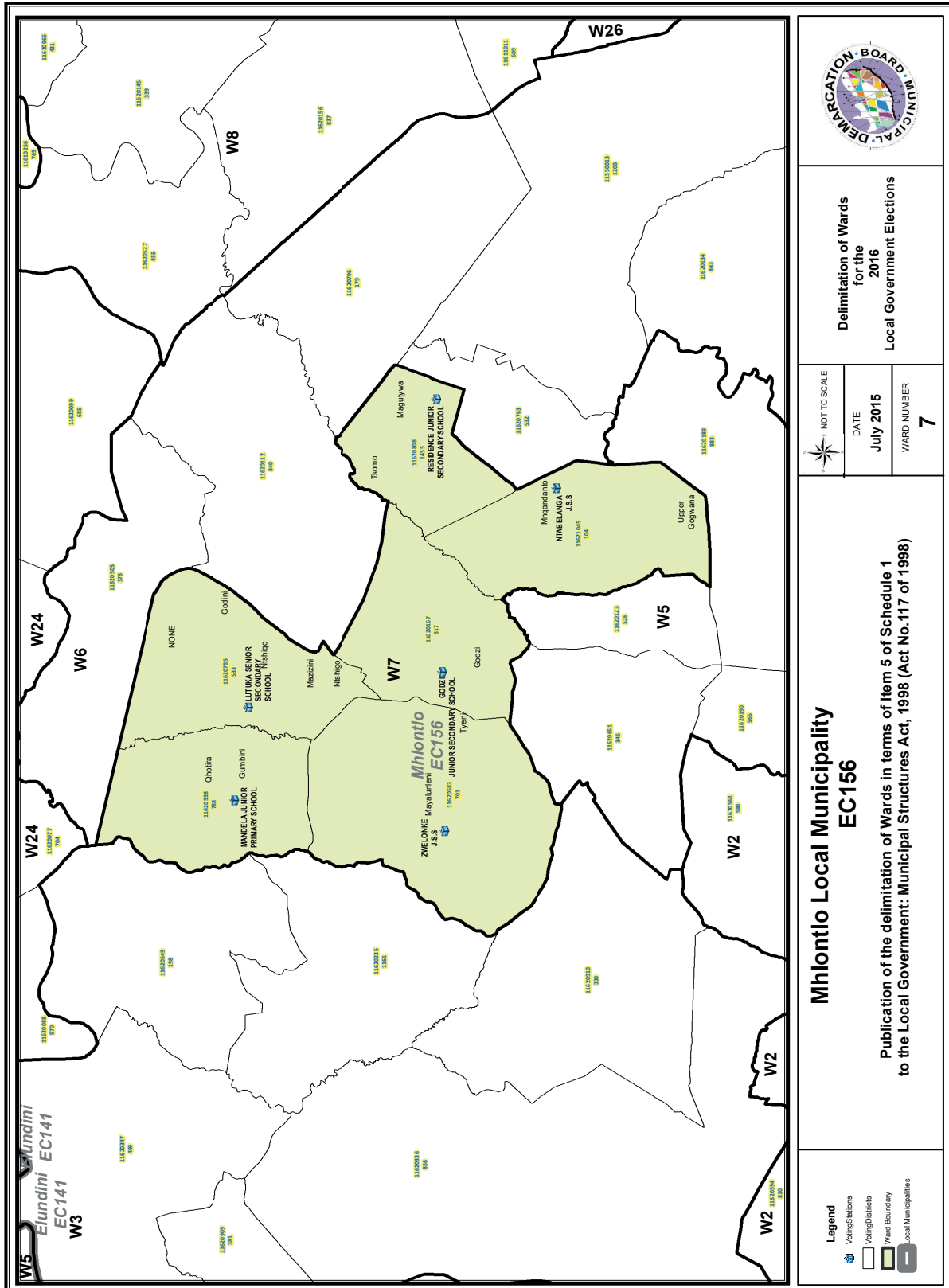
DATE	<b>July 2015</b>
WARD NUMBER	<b>4</b>

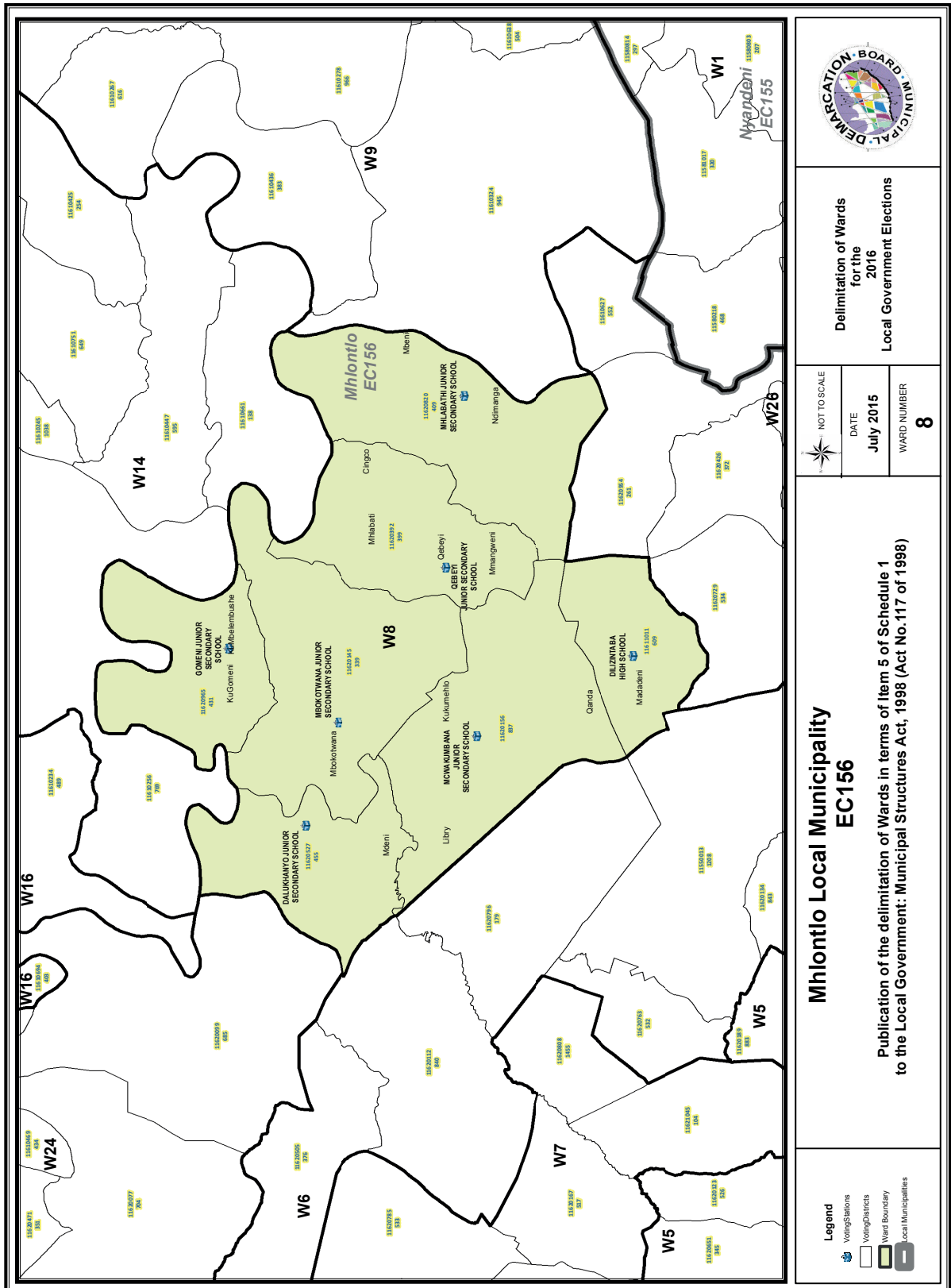
**Legend**

- Voting Stations
- Voting Districts
- Ward Boundary
- Local Municipality









**Mhiontlo Local Municipality**  
**EC156**

Publication of the delimitation of Wards in terms of Item 5 of Schedule 1 to the Local Government: Municipal Structures Act, 1998 (Act No.117 of 1998)

**Delimitation of Wards**  
**for the**  
**2016**  
**Local Government Elections**

NOT TO SCALE

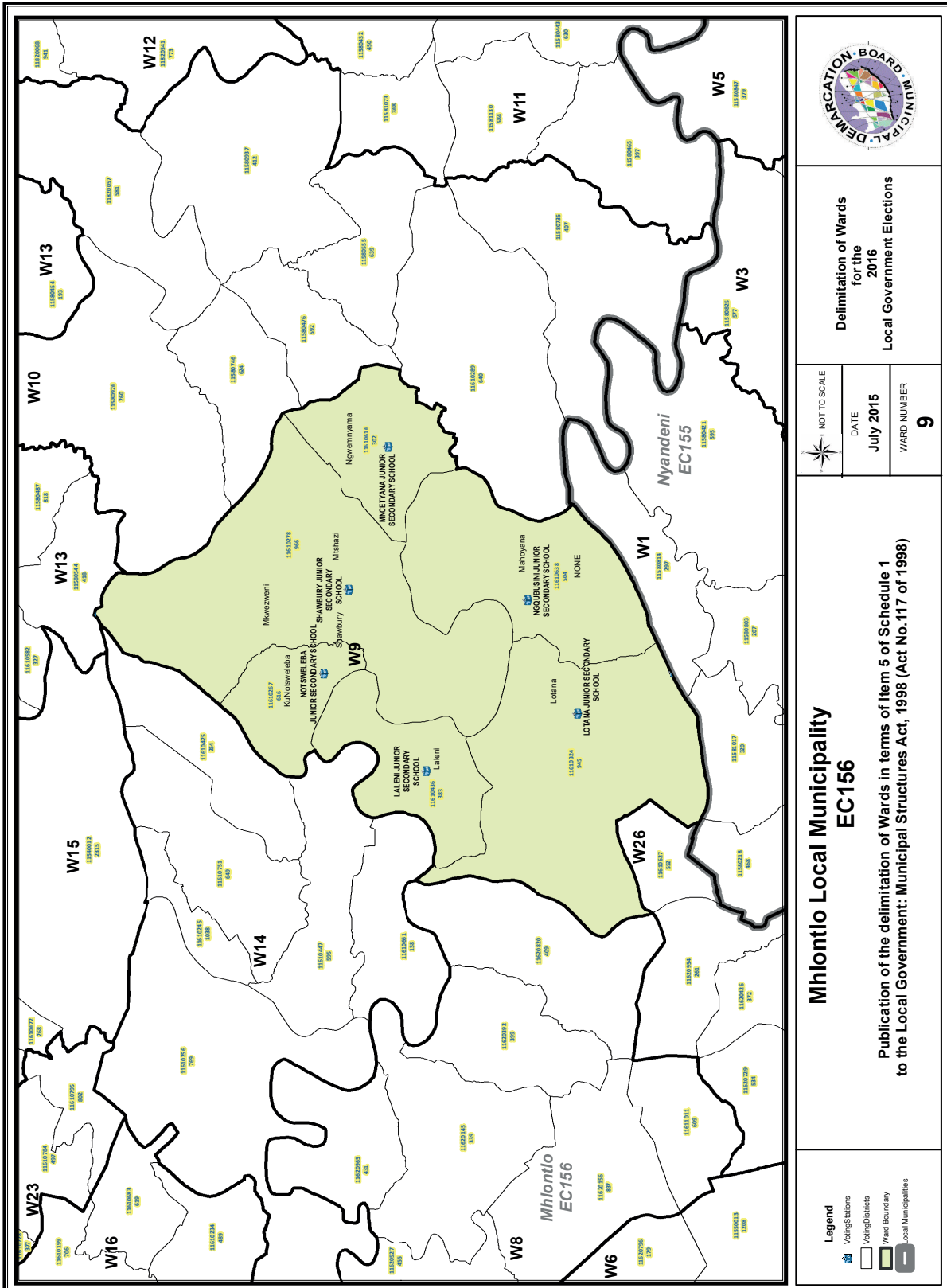
DATE  
**July 2015**

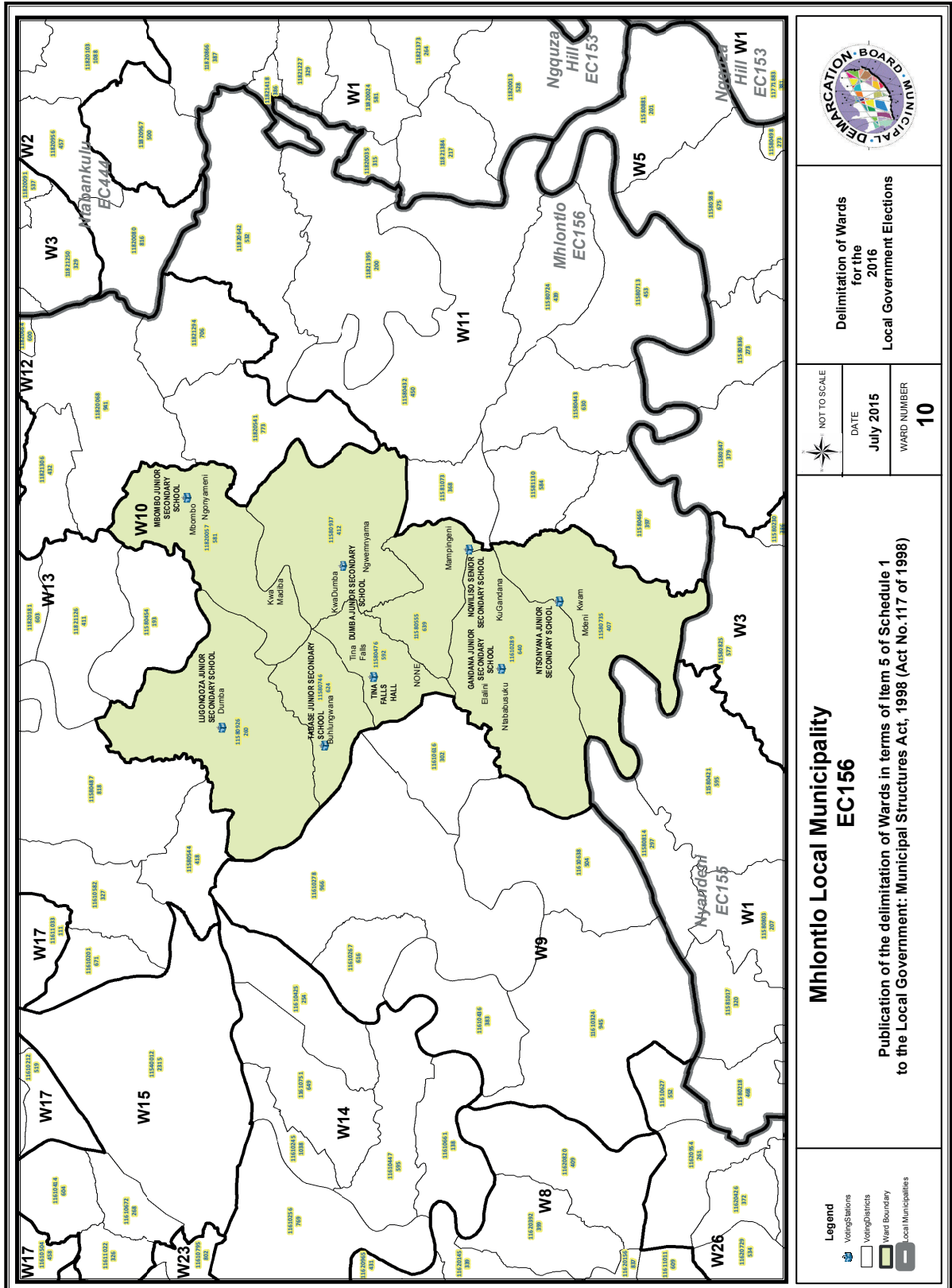
WARD NUMBER  
**8**

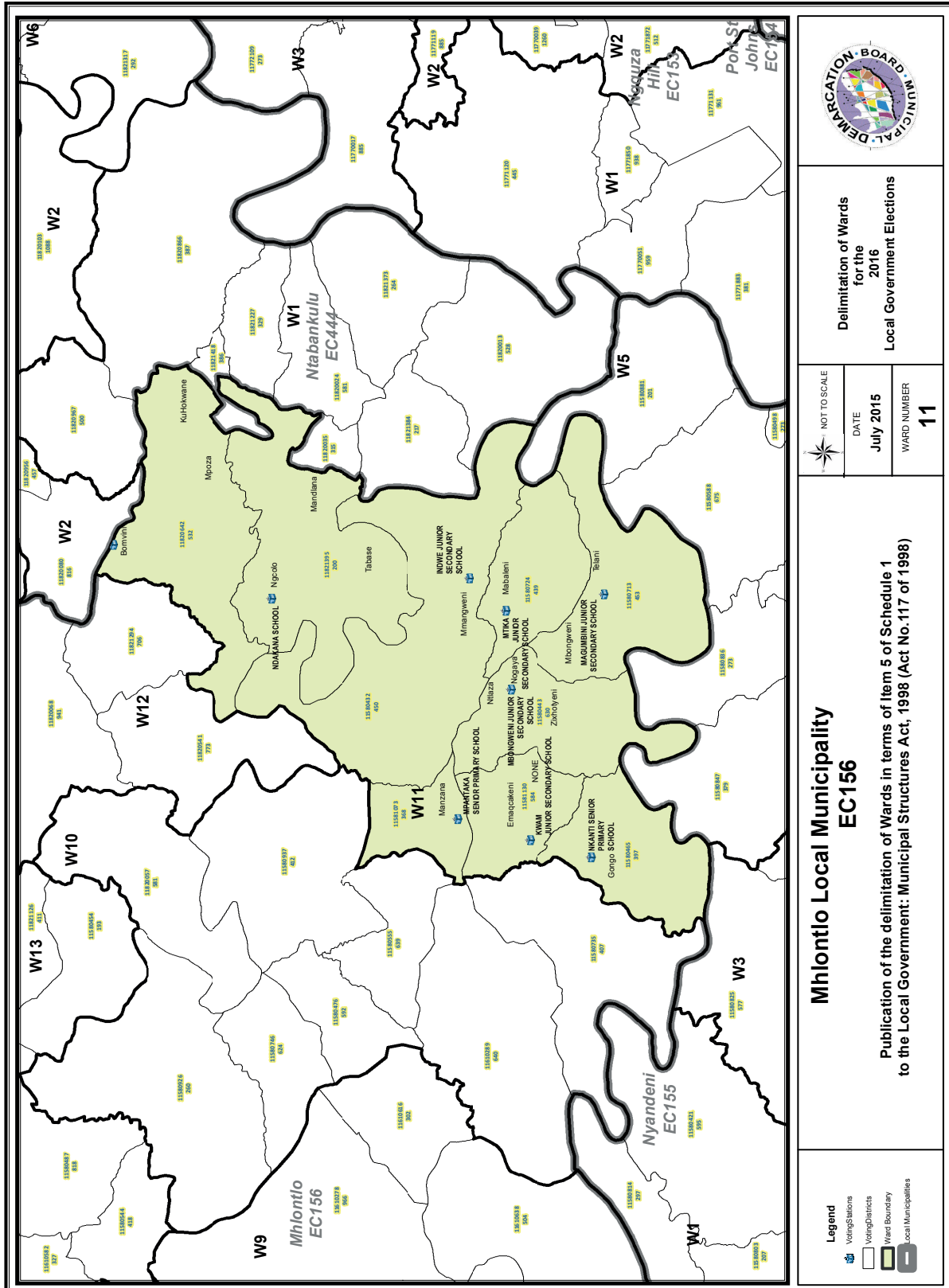
**Legend**

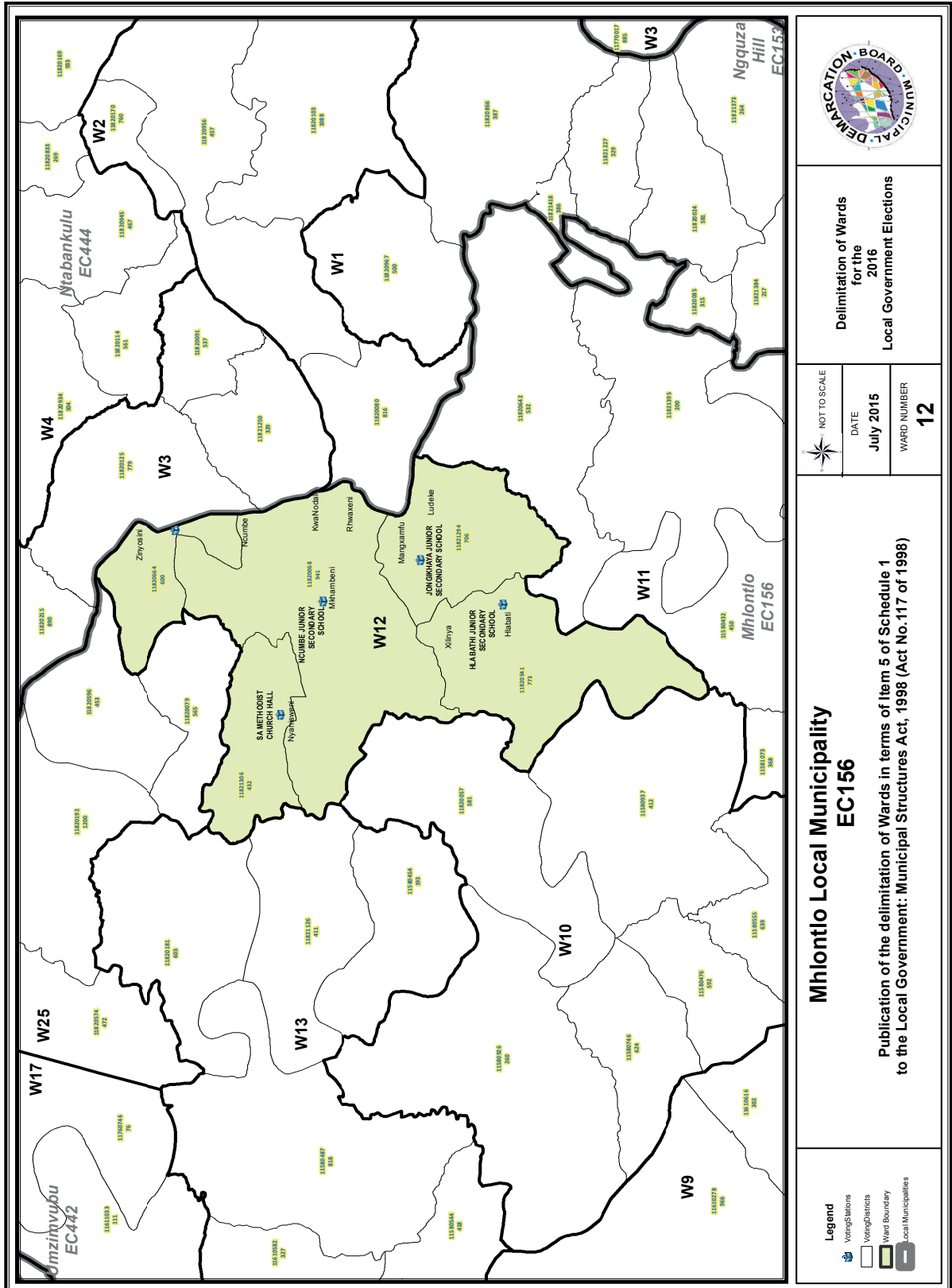
- Voting Stations
- Voting Districts
- Ward Boundary
- Local Municipalities

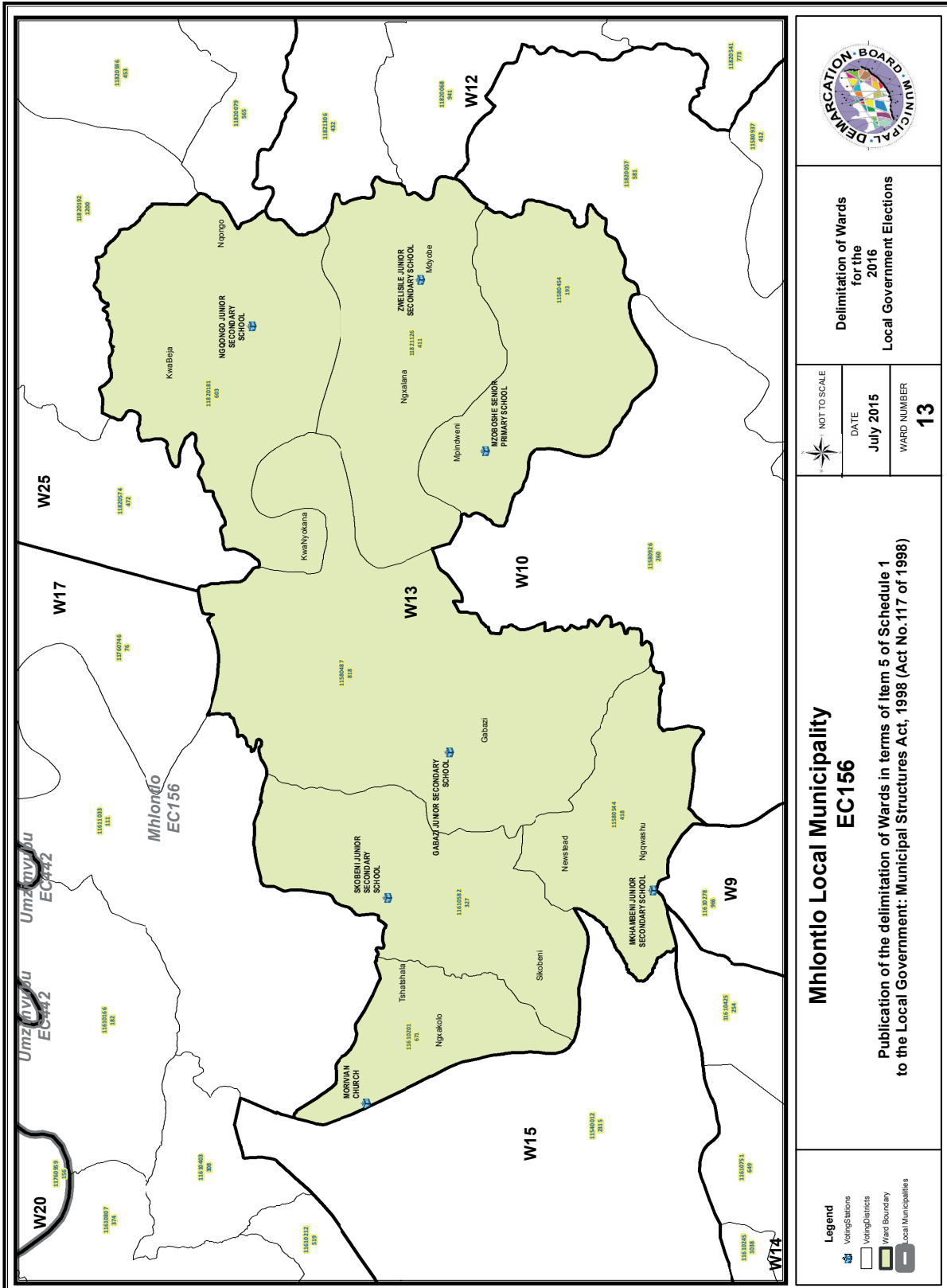












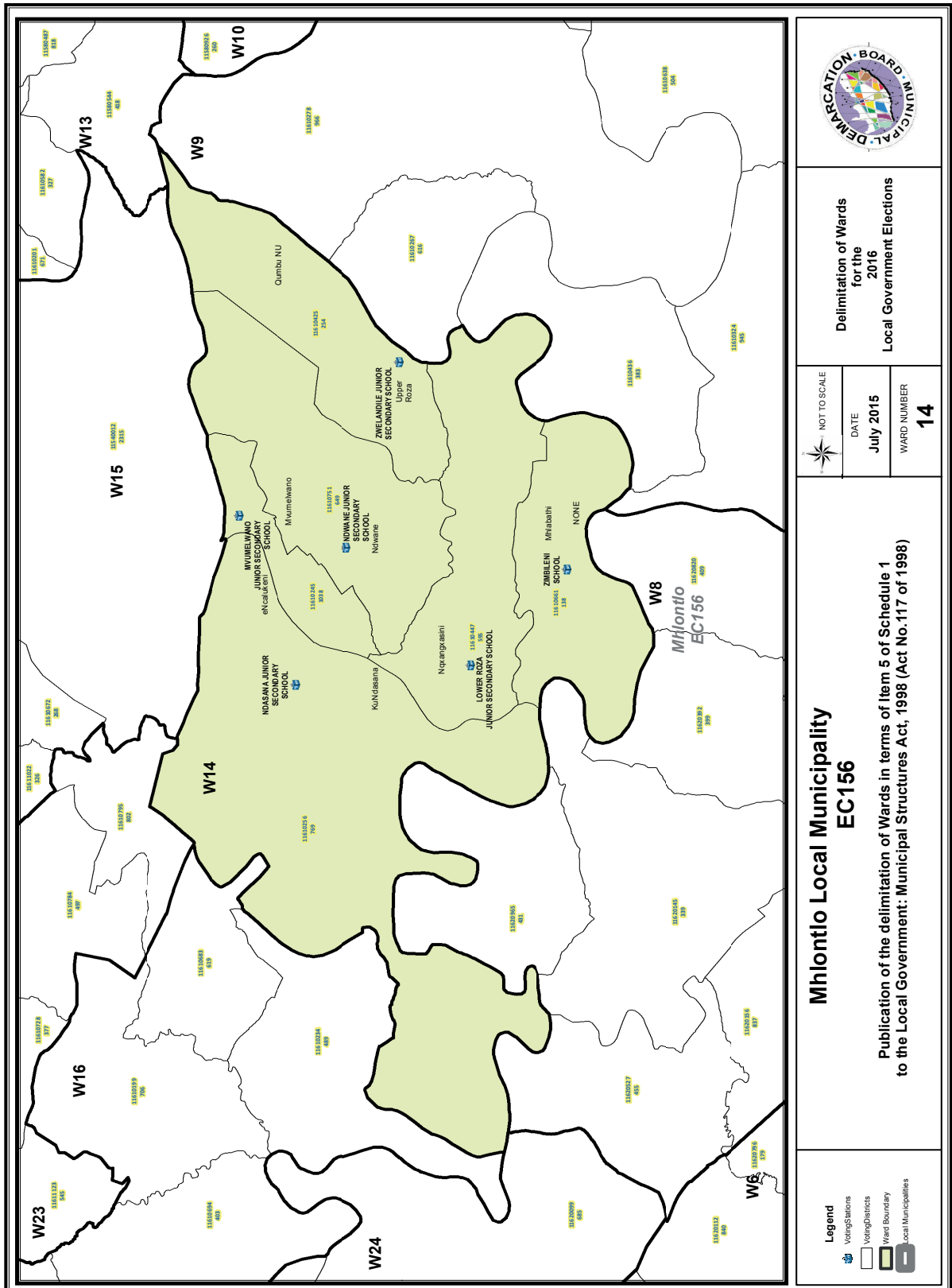
Delimitation of Wards  
for the  
2016  
Local Government Elections

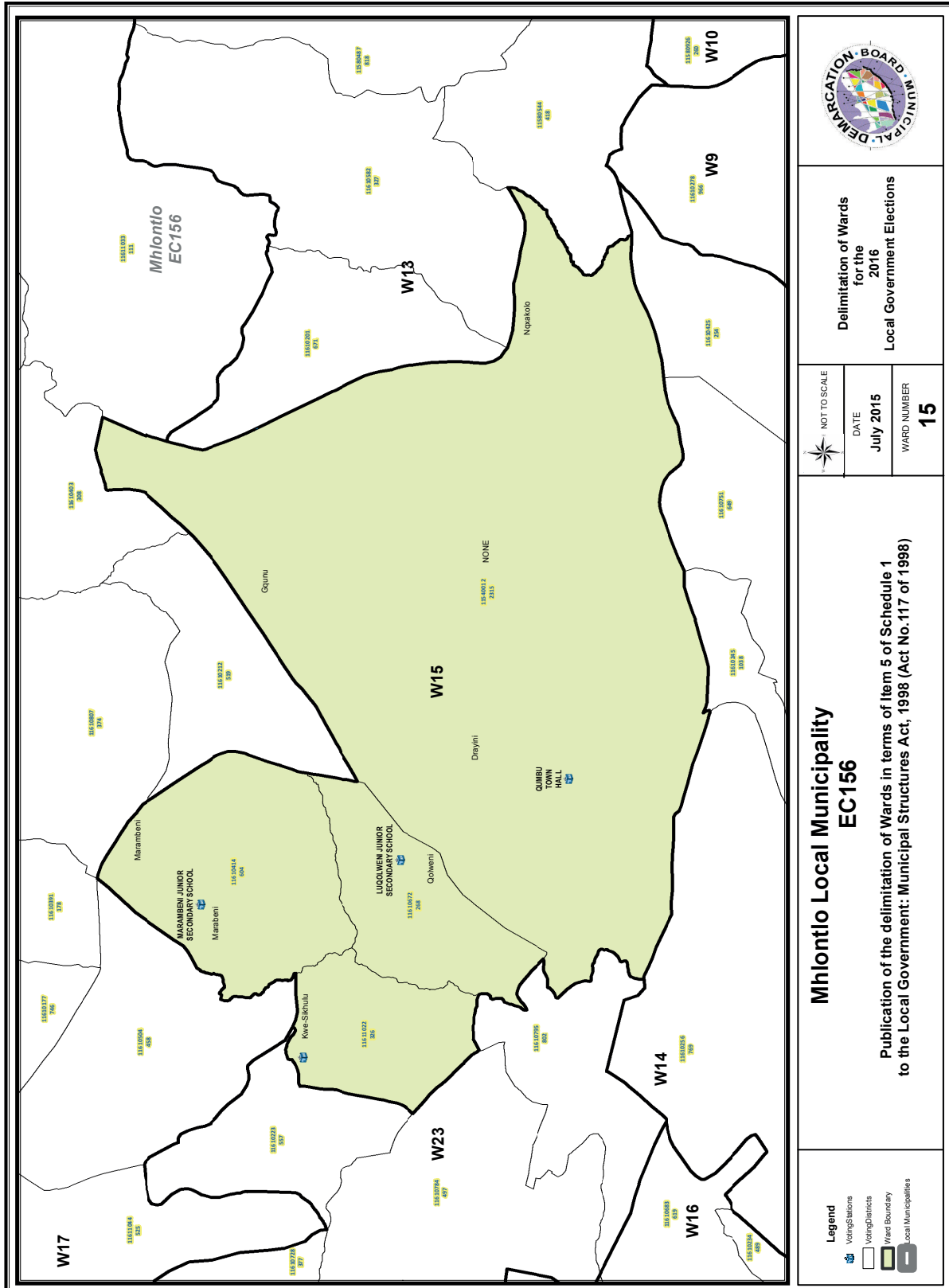
NOT TO SCALE  
DATE  
July 2015  
WARD NUMBER  
13

**Mhiontlo Local Municipality  
EC156**

Publication of the delimitation of Wards in terms of Item 5 of Schedule 1  
to the Local Government: Municipal Structures Act, 1998 (Act No.117 of 1998)

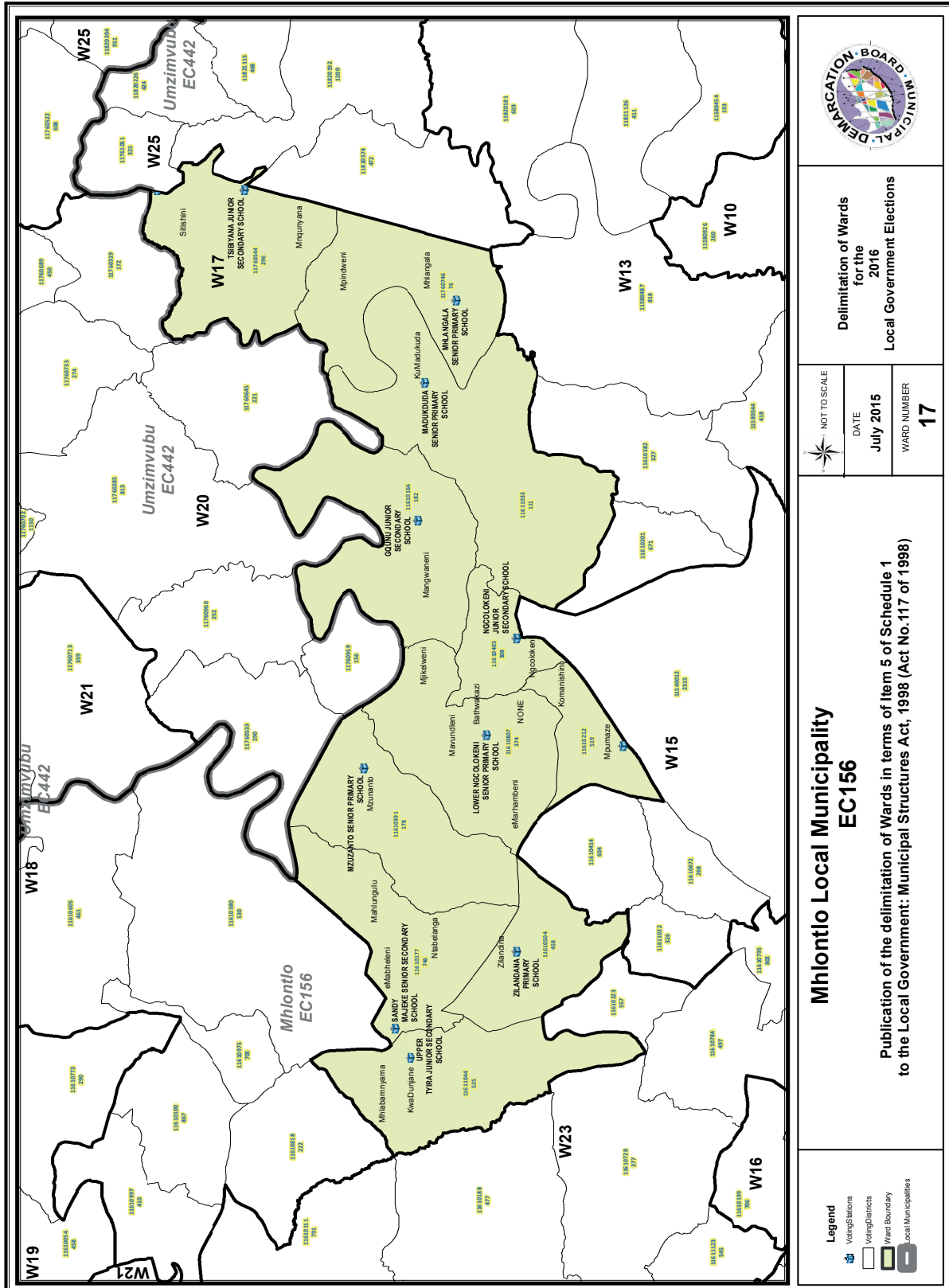
- Legend**
- Voting Stations
  - Voting Districts
  - Ward Boundary
  - Local Municipalities

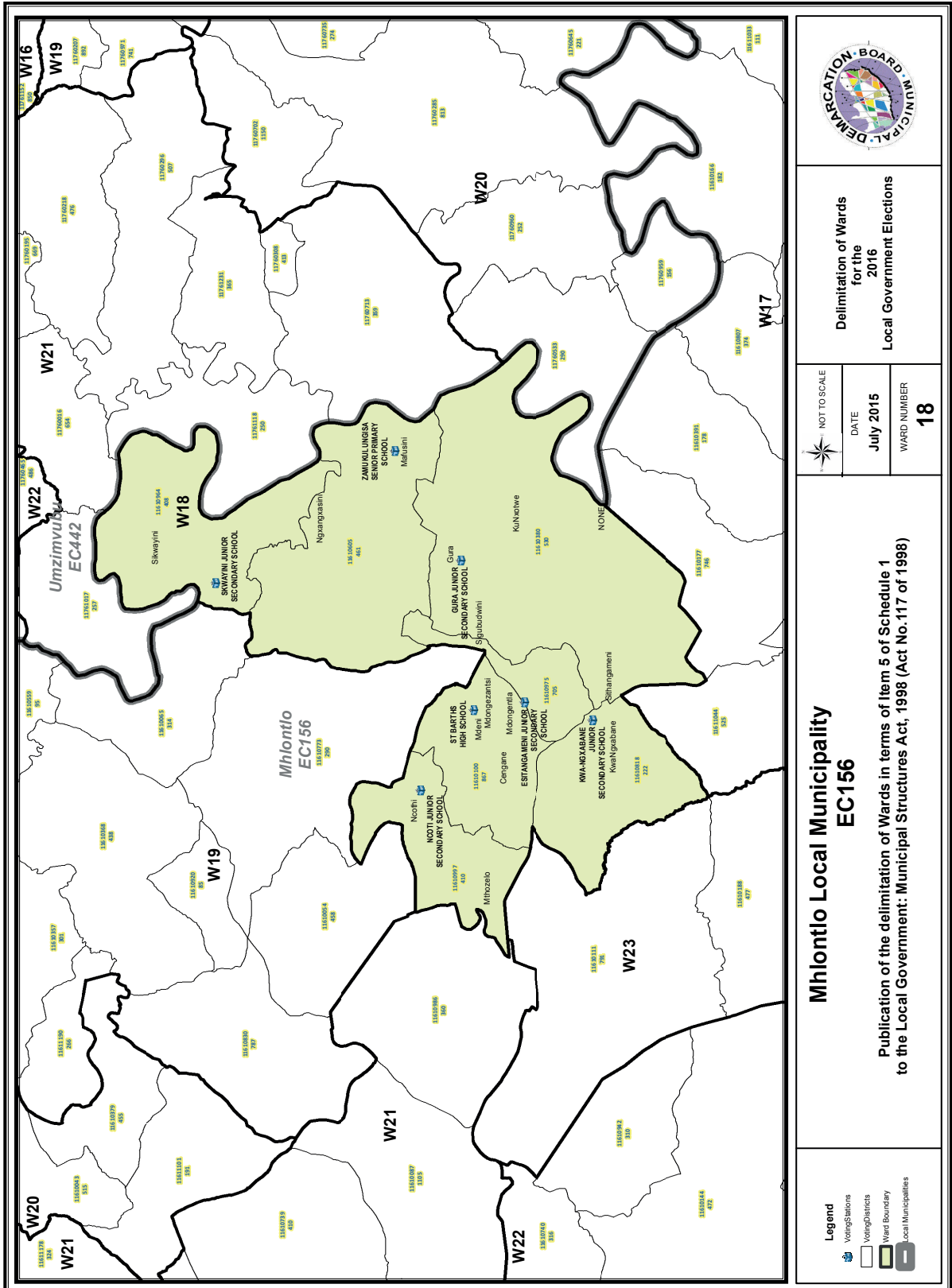












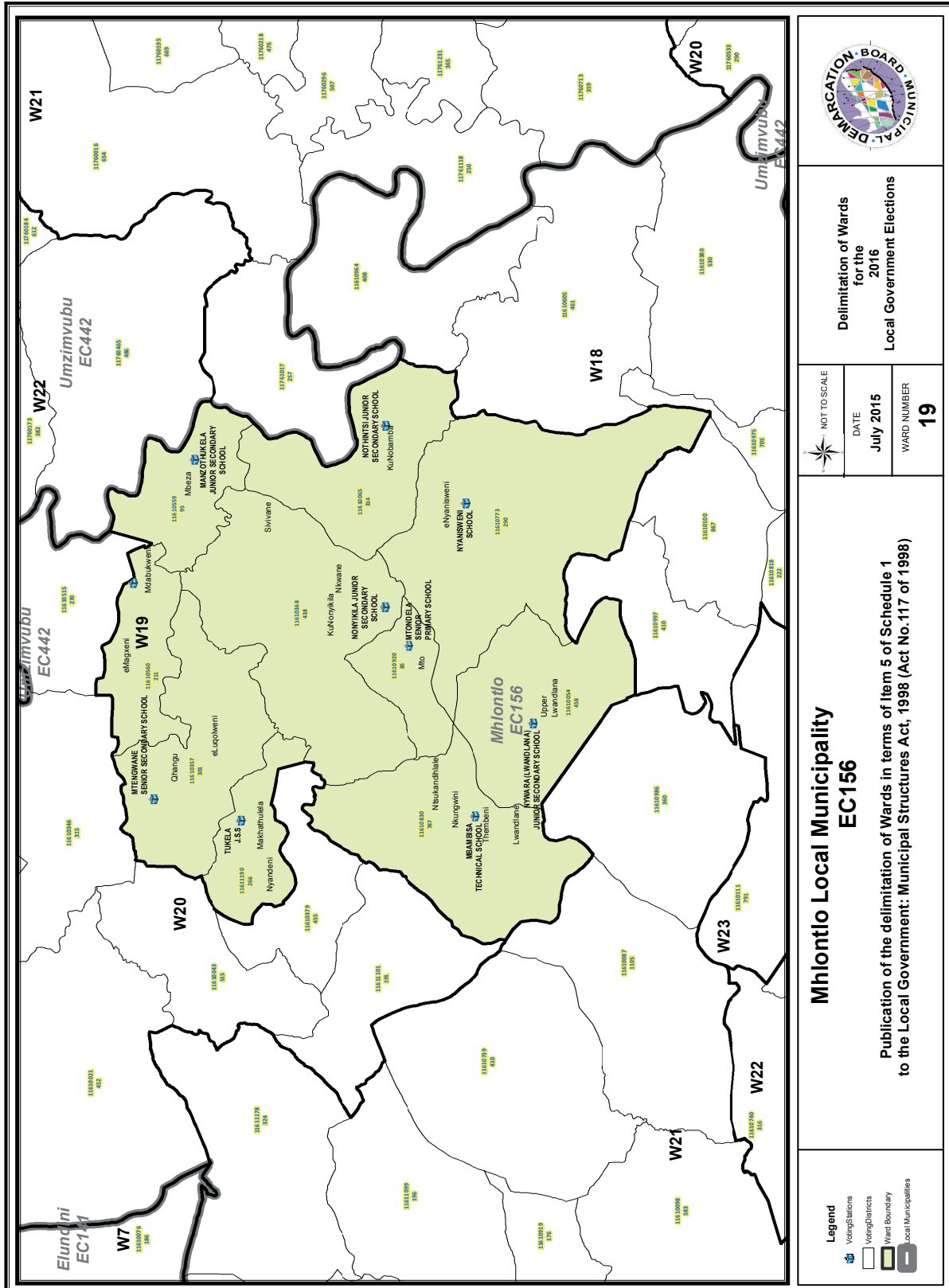
**Delimitation of Wards for the 2016 Local Government Elections**

NOT TO SCALE  
 DATE: July 2015  
 WARD NUMBER: 18

**Mhlonitlo Local Municipality EC156**

Publication of the delimitation of Wards in terms of Item 5 of Schedule 1 to the Local Government: Municipal Structures Act, 1998 (Act No. 117 of 1998)

- Legend**
- Voting Stations
  - Voting Districts
  - Ward Boundary
  - Local Municipalities



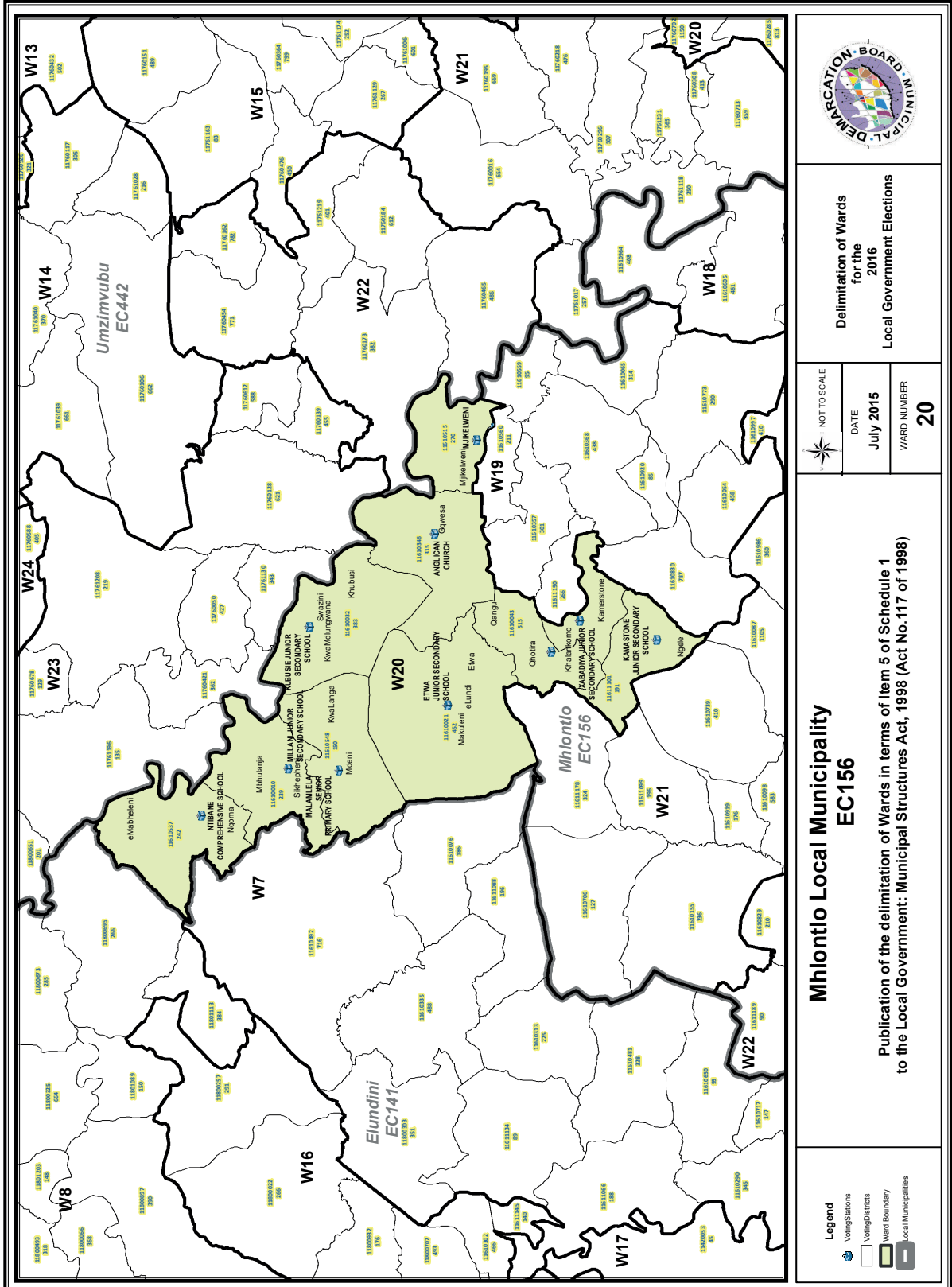
Delimitation of Wards  
for the  
2016  
Local Government Elections

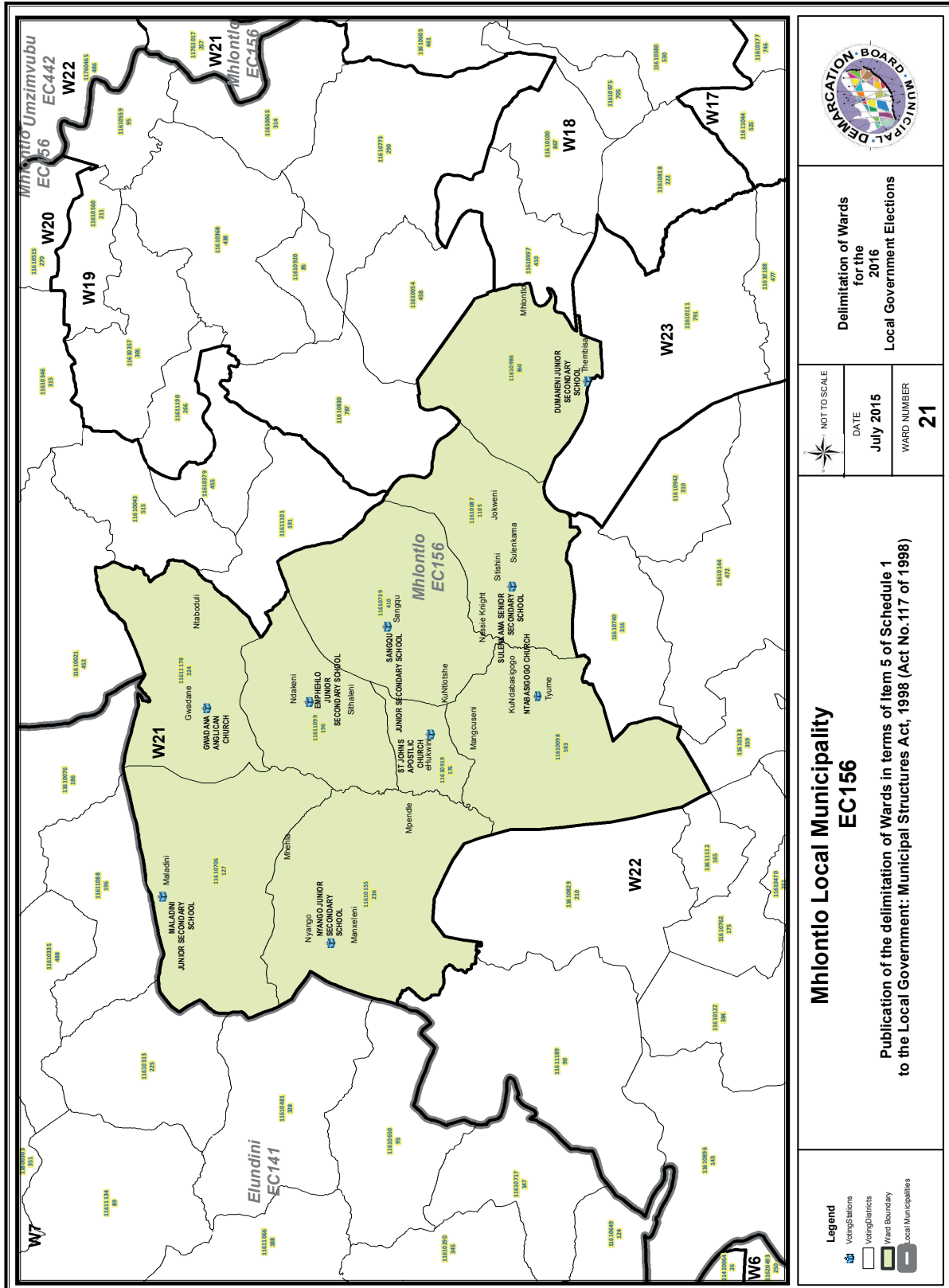
NOT TO SCALE  
DATE  
July 2015  
WARD NUMBER  
19

**Mhiontlo Local Municipality  
EC156**

Publication of the delimitation of Wards in terms of Item 5 of Schedule 1  
to the Local Government: Municipal Structures Act, 1998 (Act No.117 of 1998)

- Legend**
- Voting Stations
  - Voting Districts
  - Ward Boundary
  - Local Municipalities





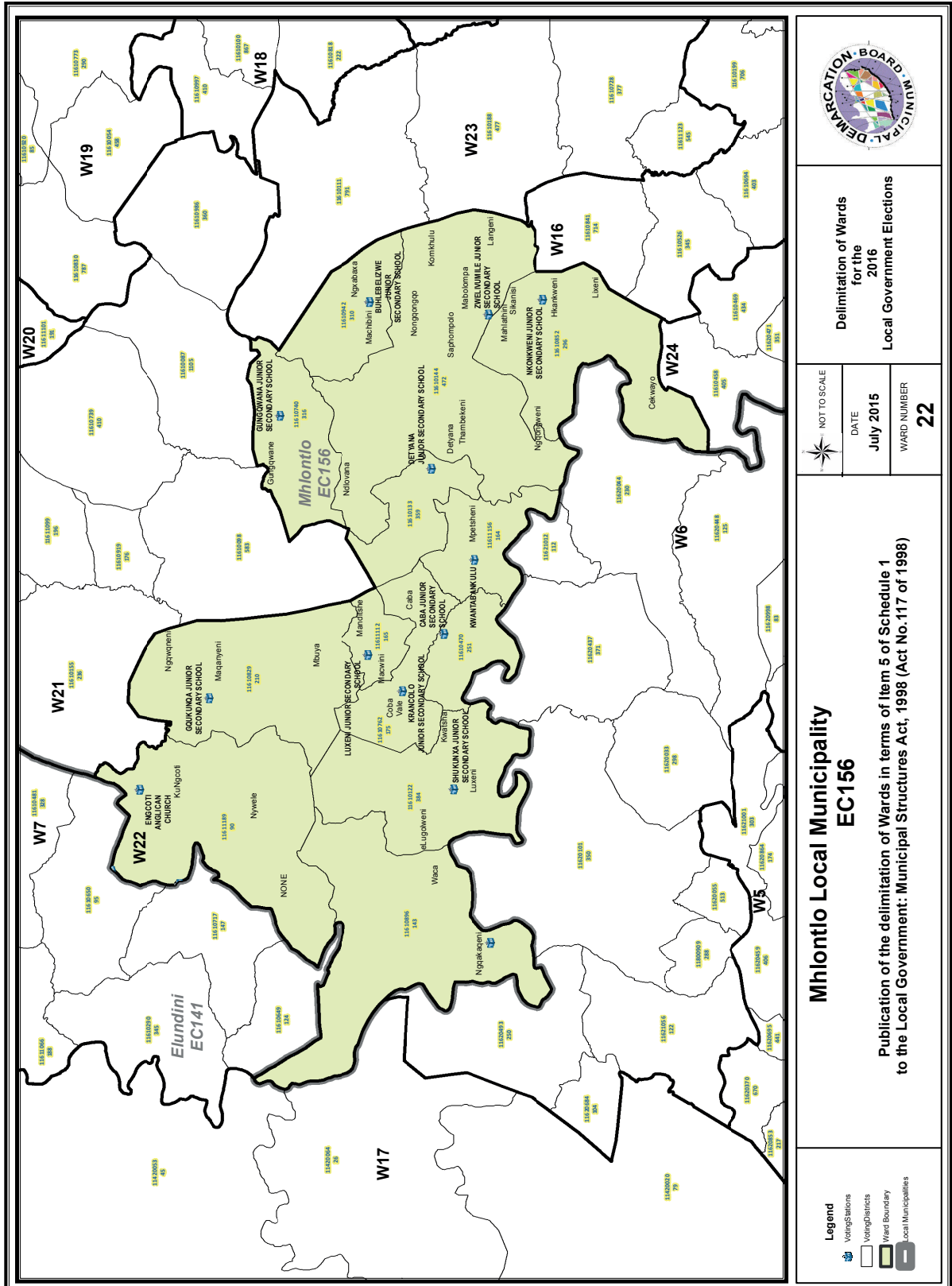
Delimitation of Wards  
for the  
2016  
Local Government Elections

NOT TO SCALE  
DATE  
July 2015  
WARD NUMBER  
**21**

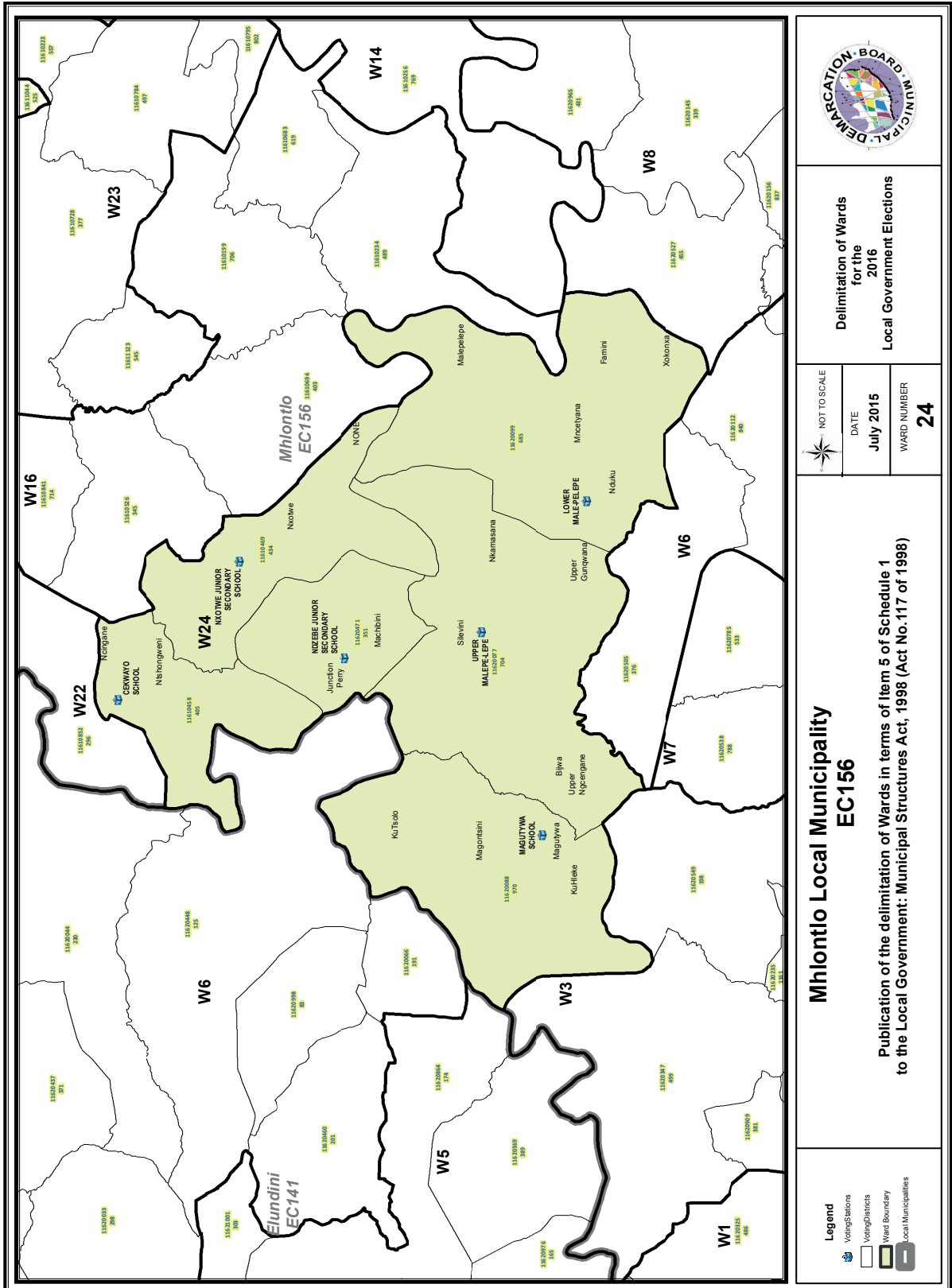
**Mhlonlo Local Municipality EC156**

Publication of the delimitation of Wards in terms of Item 5 of Schedule 1 to the Local Government: Municipal Structures Act, 1998 (Act No.117 of 1998)

- Legend**
- Voting Stations
  - Voting Districts
  - Ward Boundary
  - Local Municipalities









**Delimitation of Wards for the 2016 Local Government Elections**

NOT TO SCALE

DATE  
**July 2015**

WARD NUMBER  
**24**

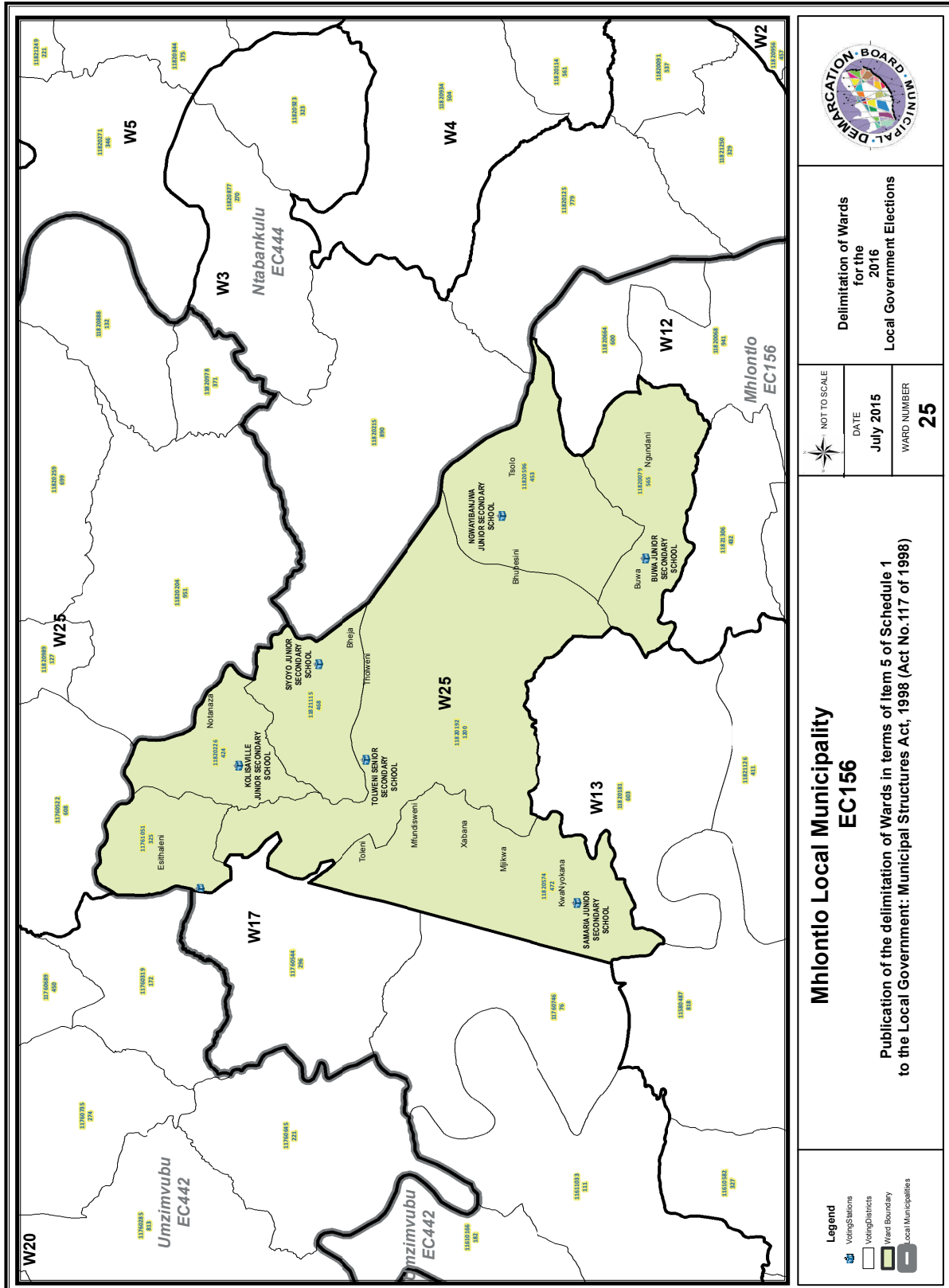
**Mhiontlo Local Municipality EC156**

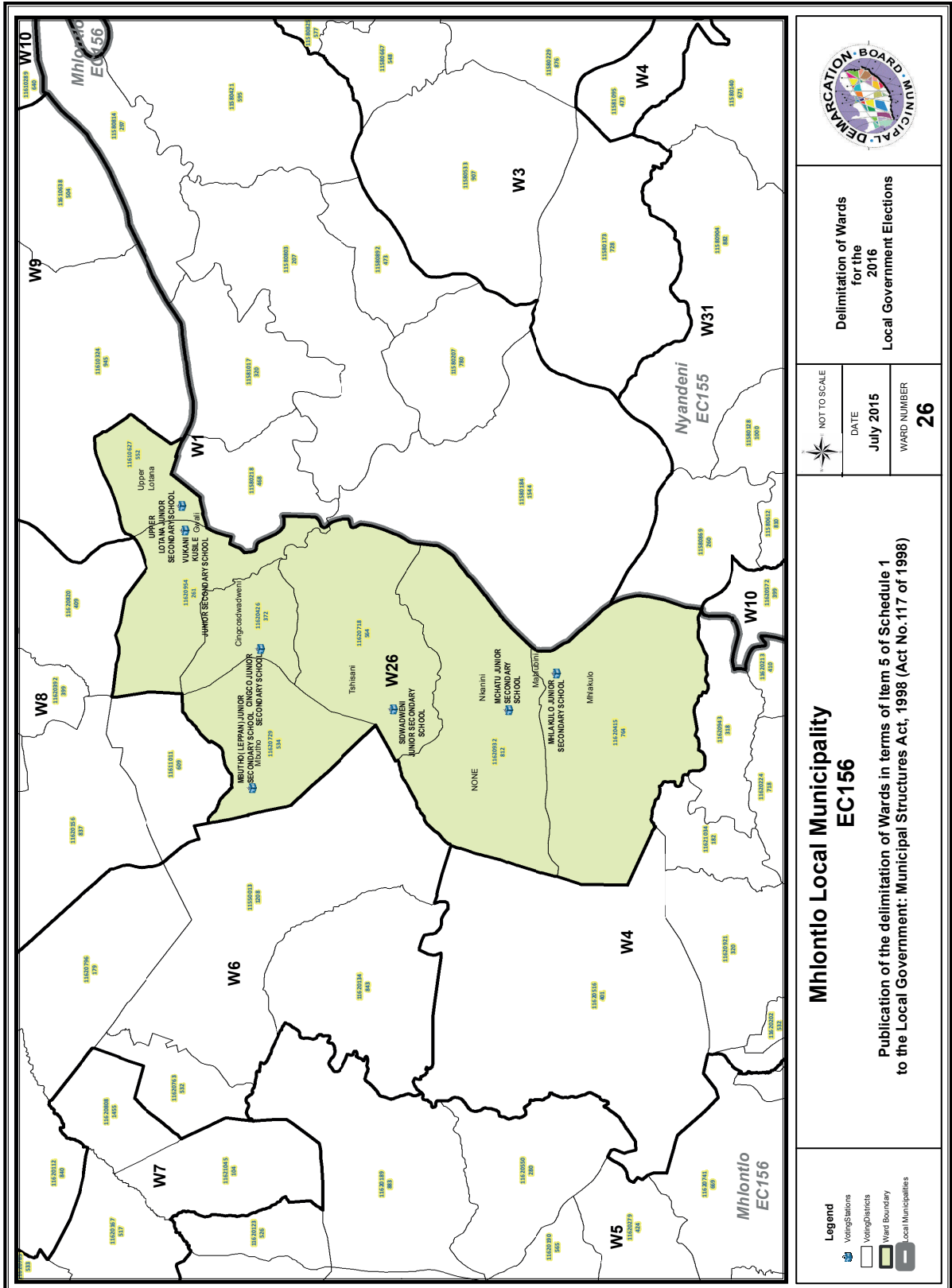
Publication of the delimitation of Wards in terms of Item 5 of Schedule 1 to the Local Government: Municipal Structures Act, 1998 (Act No.117 of 1998)



**Legend**

- Voting Stations
- Voting Districts
- Ward Boundary
- Local Municipalities







	
<b>Delimitation of Wards for the 2016 Local Government Elections</b>	
NOT TO SCALE 	DATE <b>July 2015</b>
	WARD NUMBER <b>26</b>
<b>Mhiontlo Local Municipality EC156</b>	
Publication of the delimitation of Wards in terms of Item 5 of Schedule 1 to the Local Government: Municipal Structures Act, 1998 (Act No.117 of 1998)	
<b>Legend</b> Voting Stations Voting Districts Ward Boundary Local Municipalities	

**FORM/VORM MDB5**

**WARD DELIMITATION/**

**WYKSAFBAKENING**

**OBJECTION IN TERMS OF ITEM 5(2) OF SCHEDULE 1 TO THE LOCAL GOVERNMENT:  
MUNICIPAL STRUCTURES ACT, 1998**

**BESWAAR INGEVOLGE ITEM 5(2) VAN BYLAE 1 VAN DIE WET OP PLAASLIKE REGERING:  
MUNISIPALE STRUKTURE, 1998**

**Name of municipality/ Naam van Munisipaliteit :.....**

**Code/Kode :.....**

**Name of aggrieved person/institution/Naam van beswaarde persoon/instelling :  
.....**

**Contact person in case of an institution/ Kontak persoon in geval van 'n instelling:  
.....**

**Address/Adres:.....**

**Tel. number/ Tel. nommer:.....Cell number/ Selfoonnommer: .....**

**Email address:.....**

PLEASE USE ADDITIONAL PAGE SHOULD THE ALTERNATIVE PROPOSALS BE MORE THAN THE FOLLOWING SPACE AVAILABLE.

I request the Municipal Demarcation Board to consider the following alternative proposals/ Ek versoek die Munisipale Afbakeningsraad om die volgende alternatiewe voorstelle te oorweeg:

Ward number/ Wyk nommer	The ward should comprise of the following voting districts (Provide voting district number and the number of voters in brackets e.g. VD1123456(1500)+VD345678(2500)=4000)/  Die wyk moet bestaan uit die volgende stemdistrikte: (Voorsien die stemdistriknommer en die getal geregistreerde kiesers as volg VD1123456(1500)+VD345678(2500)=4000)	Motivation /Motivering

I confirm that/ Ek bevestig dat:

- each cluster of voting districts form a contiguous ward/ die saamgevoegde stemdistrikte vorm 'n aaneenlopende wyk;
- the number of voters in each ward fall within the minimum and maximum of voters allowed per ward/ die getal kiesers in elke wyk is binne die minimum en maksimum getal wat per wyk toegelaat word;
- the proposed ward boundaries comply, in general, with the criteria/ die voorgestelde wyke voldoen in die algemeen aan die kriteria.

\_\_\_\_\_  
SIGNATURE

\_\_\_\_\_  
NAME AND SURNAME

\_\_\_\_\_  
DATE







# IMPORTANT

## Information

### from Government Printing Works

Dear Valued Customers,

Government Printing Works has implemented rules for completing and submitting the electronic Adobe Forms when you, the customer, submits your notice request.

Please take note of these guidelines when completing your form.

#### GPW Business Rules

1. No hand written notices will be accepted for processing, this includes Adobe forms which have been completed by hand.
2. Notices can only be submitted in Adobe electronic form format to the email submission address [submit.egazette@gpw.gov.za](mailto:submit.egazette@gpw.gov.za). This means that any notice submissions not on an Adobe electronic form that are submitted to this mailbox will be **rejected**. National or Provincial gazette notices, where the Z95 or Z95Prov must be an Adobe form but the notice content (body) will be an attachment.
3. Notices brought into GPW by "walk-in" customers on electronic media can only be submitted in Adobe electronic form format. This means that any notice submissions not on an Adobe electronic form that are submitted by the customer on electronic media will be **rejected**. National or Provincial gazette notices, where the Z95 or Z95Prov must be an Adobe form but the notice content (body) will be an attachment.
4. All customers who walk in to GPW that wish to submit a notice that is not on an electronic Adobe form will be routed to the Contact Centre where the customer will be taken through the completion of the form by a GPW representative. Where a customer walks into GPW with a stack of hard copy notices delivered by a messenger on behalf of a newspaper the messenger must be referred back to the sender as the submission does not adhere to the submission rules.
5. All notice submissions that do not comply with point 2 will be charged full price for the notice submission.
6. The current cut-off of all Gazette's remains unchanged for all channels. (Refer to the GPW website for submission deadlines – [www.gpwonline.co.za](http://www.gpwonline.co.za))
7. Incorrectly completed forms and notices submitted in the wrong format will be rejected to the customer to be corrected and resubmitted. Assistance will be available through the Contact Centre should help be required when completing the forms. (012-748 6200 or email [info.egazette@gpw.gov.za](mailto:info.egazette@gpw.gov.za))
8. All re-submissions by customers will be subject to the above cut-off times.
9. All submissions and re-submissions that miss the cut-off will be rejected to the customer to be submitted with a new publication date.
10. Information on forms will be taken as the primary source of the notice to be published. Any instructions that are on the email body or covering letter that contradicts the notice form content will be ignored.

You are therefore advised that effective from **Monday, 18 May 2015** should you not comply with our new rules of engagement, all notice requests will be rejected by our new system.

Furthermore, the fax number **012- 748 6030** will also be **discontinued** from this date and customers will only be able to submit notice requests through the email address [submit.egazette@gpw.gov.za](mailto:submit.egazette@gpw.gov.za).



**eGazette**



Printed by and obtainable from the Government Printer, Bosman Street, Private Bag X85, Pretoria, 0001.  
 Contact Centre Tel: 012-748 6200. eMail: [info.egazette@gpw.gov.za](mailto:info.egazette@gpw.gov.za)  
 Also available at the Legal Advisory Services, **Province of the Eastern Cape**, Private Bag X0047, Bisho, 5605.  
 Tel. (040) 635-0052.