



PROVINCE OF THE EASTERN CAPE
IPHONDO LEMPUMA KOLONI
PROVINSIE OOS-KAAP

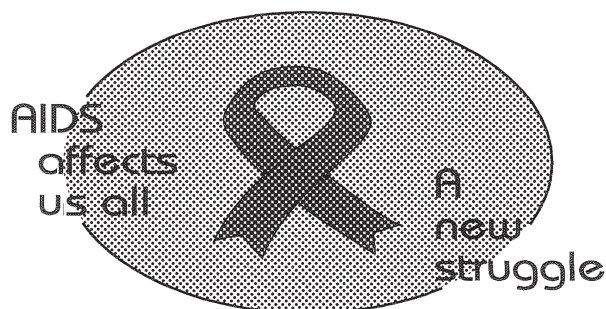
**Provincial Gazette
Igazethi Yephondo
Provinsiale Koerant
(Extraordinary)**

Vol. 22

BISHO/
KING WILLIAM'S TOWN, 22 JULY 2015

No. 3437

We all have the power to prevent AIDS



**AIDS
HELPLINE**

0800 012 322

DEPARTMENT OF HEALTH

Prevention is the cure

N.B. The Government Printing Works will not be held responsible for the quality of "Hard Copies" or "Electronic Files" submitted for publication purposes

ISSN 1682-4556



9 771682 455006

03437



IMPORTANT

Information

from Government Printing Works

Dear Valued Customers,

Government Printing Works has implemented rules for completing and submitting the electronic Adobe Forms when you, the customer, submits your notice request.

Please take note of these guidelines when completing your form.



GPW Business Rules

1. No hand written notices will be accepted for processing, this includes Adobe forms which have been completed by hand.
2. Notices can only be submitted in Adobe electronic form format to the email submission address submit.egazette@gpw.gov.za. This means that any notice submissions not on an Adobe electronic form that are submitted to this mailbox will be **rejected**. National or Provincial gazette notices, where the Z95 or Z95Prov must be an Adobe form but the notice content (body) will be an attachment.
3. Notices brought into GPW by "walk-in" customers on electronic media can only be submitted in Adobe electronic form format. This means that any notice submissions not on an Adobe electronic form that are submitted by the customer on electronic media will be **rejected**. National or Provincial gazette notices, where the Z95 or Z95Prov must be an Adobe form but the notice content (body) will be an attachment.
4. All customers who walk in to GPW that wish to submit a notice that is not on an electronic Adobe form will be routed to the Contact Centre where the customer will be taken through the completion of the form by a GPW representative. Where a customer walks into GPW with a stack of hard copy notices delivered by a messenger on behalf of a newspaper the messenger must be referred back to the sender as the submission does not adhere to the submission rules.
5. All notice submissions that do not comply with point 2 will be charged full price for the notice submission.
6. The current cut-off of all Gazette's remains unchanged for all channels. (Refer to the GPW website for submission deadlines – www.gpwonline.co.za)
7. Incorrectly completed forms and notices submitted in the wrong format will be rejected to the customer to be corrected and resubmitted. Assistance will be available through the Contact Centre should help be required when completing the forms. (012-748 6200 or email info.egazette@gpw.gov.za)
8. All re-submissions by customers will be subject to the above cut-off times.
9. All submissions and re-submissions that miss the cut-off will be rejected to the customer to be submitted with a new publication date.
10. Information on forms will be taken as the primary source of the notice to be published. Any instructions that are on the email body or covering letter that contradicts the notice form content will be ignored.

You are therefore advised that effective from **Monday, 18 May 2015** should you not comply with our new rules of engagement, all notice requests will be rejected by our new system.

Furthermore, the fax number **012- 748 6030** will also be **discontinued** from this date and customers will only be able to submit notice requests through the email address submit.egazette@gpw.gov.za.

DISCLAIMER:

Government Printing Works reserves the right to apply the 25% discount to all Legal and Liquor notices that comply with the business rules for notice submissions for publication in gazettes.

National, Provincial, Road Carrier Permits and Tender notices will pay the price as published in the Government Gazettes.

For any information, please contact the eGazette Contact Centre on 012-748 6200 or email info.egazette@gpw.gov.za

Table of Contents

<i>No.</i>		<i>Gazette No.</i>	<i>Page No.</i>
PROVINCIAL NOTICES • PROVINSIALE KENNISGEWINGS			
53	Local Government: Municipal Structures Act (117/1998): Municipal Demarcation Board: Delimitation of municipal wards: Mquma Local Municipality (EC122)	3437	4
53	Wet Op Plaaslike Regering: Munisipale Strukture (117/1998): Afbakening van munisipale wyke: Mquma Local Municipality (EC122)	3437	5

PROVINCIAL NOTICES • PROVINSIALE KENNISGEWINGS

PROVINCIAL NOTICE 53 OF 2015**MUNICIPAL DEMARCATION BOARD : DELIMITATION OF
MUNICIPAL WARDS IN TERMS OF THE LOCAL
GOVERNMENT : MUNICIPAL STRUCTURES ACT, 1998.****Mnquma Local Municipality
EC122**

In terms of Item 5 (1) of Schedule 1 to the Local Government: Municipal Structures Act, 1998 (Act No. 117 of 1998) (the Act) the Municipal Demarcation Board hereby publishes its delimitation of wards for the above-mentioned municipality. Particulars of the delimitation are listed in the Schedule.

In terms of Item 5 (2) of Schedule 1 to the Act, any person aggrieved by the delimitation may, within 14 days of publication of this notice, submit objections in writing to:

The Municipal Demarcation Board
Private Bag X123
Centurion
0046

Fax: 086 5248643
Email: wards@demarcation.org.za

The attached form MDB 5 must please be used to object. The form is also available on www.demarcation.org.za

**MS JANE THUPANA
CHAIRPERSON: MUNICIPAL DEMARCATION BOARD**

SCHEDULE

In terms of section 18(3) of the Local Government: Municipal Structures Act, 1998 (Act 117 of 1998), the MEC responsible for local government has determined that the municipal council consists of 62 councillors.

After having consulted the Independent Electoral Commission, The Municipal Demarcation Board has delimited the municipality into 31 wards in terms of Schedule 1 of the Act.

The number of registered voters in each ward does not vary by more than fifteen percent from the norm. The norm was determined by dividing the total number of voters on the municipal segment of the national common voters roll, namely 122899 voters on 5 March 2014, by the number of wards in the municipality.

An overview map of the boundary of the municipality, with the boundaries of the wards within the municipality, and a map of each ward are attached. In case of a discrepancy between the map and this schedule, the map will prevail. The ward numbers, the voting districts and voting stations in each ward, and the number of voters are as follows:

PROVINSIALE KENNISGEWING 53 VAN 2015**MUNISIPALE AFBAKENINGSRAAD :
AFBAKENING VAN MUNISIPALE WYKE INGEVOLGE DIE WET OP
PLAASLIKE REGERING: MUNISIPALE STRUKTURE, 1998****Mnquma Local Municipality****EC122**

Ingevolge Item 5(1) van Bylae 1 van die Wet op Plaaslike Regering: Munisipale Strukture, 1998 (Wet No. 117 van 1998) (die Wet) publiseer die Munisipale Afbakeningsraad hiermee sy afbakening van wyke vir die bogenaaamde munisipaliteit. Besonderhede van die afbakening is vervat in die Bylae.

Ingevolge item 5(2) van Bylae 1 van die Wet, kan enige persoon wat gegrief is deur 'n afbakening binne 14 dae vanaf publikasie van hierdie kennisgewing skriftelike besware voorlê aan:

Die Munisipale Afbakeningsraad
Privaatsak X123
Centurion
0046

Faks: 086 5248643
E-pos: wards@demarcation.org.za

Die aangehegte vorm MDB5 moet asseblief gebruik word om beswaar aan te teken. Die vorm is ook beskikbaar op www.demarcation.org.za

**MS JANE THUPANA
VOORSITTER : MUNISIPALE AFBAKENINGSRAAD****BYLAE**

Ingevolge artikel 18(3) van die Wet op Plaaslike Regering: Munisipale Strukture, 1998 (Wet 117 van 1998) het die LUR vir plaaslike regering bepaal dat die munisipale raad bestaan uit 62 raadslede.

Na oorlegpleging met die Onafhanklike Verkiesingskommissie het die Munisipale Afbakeningsraad die munisipaliteit in 31 wyke afgebaken ingevolge Bylae 1 van die Wet.

Die getal geregistreerde kiesers in elke wyk, wyk nie meer as vyftien persent van die norm af nie. Die norm is bepaal deur die getal geregistreerde kiesers op die munisipale segment van die nasionale gemeenskaplike kieserslys, naamlik 122899 kiesers op 5 Maart 2014, deur die getal wyke in die munisipaliteit te deel.

'n Oorsigkaart van die munisipale grens met die grense van die wyke binne die munisipale grens, en 'n kaart van elke wyk, is aangeheg. Ingeval van 'n verskil tussen 'n kaart en hierdie bylae, sal die kaart geld.

Die wyknommers, die stembedistrikte en stemlokale in elke wyk, en die getal kiesers is as volg:

Ward 1 comprises of a total of 4380 registered voters.
Wyk 1 bestaan uit 'n totaal van 4380 geregistreerde kiesers.
 MIN VOTERS/KIESER 3369 NORM 3964 MAX VOTERS/KIESER 4559

VOTING DISTRICT No. STEMDISTRIK No.	VOTING STATION NAME STEMLOKAAL NAAM	NUMBER OF VOTERS GETAL KIESERS	SPLIT VD VERDEELDE SD
10570160	SKITI SQUATER CAMP	649	
10570014	TOWN HALL	2459	
10570148	CHRISTIAN CENTRE TENT	530	
10790311	NEW HORISON SCHOOL	742	

Ward 2 comprises of a total of 4127 registered voters.
Wyk 2 bestaan uit 'n totaal van 4127 geregistreerde kiesers.
 MIN VOTERS/KIESER 3369 NORM 3964 MAX VOTERS/KIESER 4559

VOTING DISTRICT No. STEMDISTRIK No.	VOTING STATION NAME STEMLOKAAL NAAM	NUMBER OF VOTERS GETAL KIESERS	SPLIT VD VERDEELDE SD
10570081	NOZUKO CLINIC TENT	1610	
10790063	SIYANDA JUNIOR SECONDARY SCHOOL	1074	
10570025	ST CHARDS ANGLICAN CHURCH	1443	

Ward 3 comprises of a total of 3830 registered voters.
Wyk 3 bestaan uit 'n totaal van 3830 geregistreerde kiesers.
 MIN VOTERS/KIESER 3369 NORM 3964 MAX VOTERS/KIESER 4559

VOTING DISTRICT No. STEMDISTRIK No.	VOTING STATION NAME STEMLOKAAL NAAM	NUMBER OF VOTERS GETAL KIESERS	SPLIT VD VERDEELDE SD
10570036	MSOBOMVU COMMUNITY HALL	1800	
10570092	SW MBANGA SCHOOL	2030	

Ward 4 comprises of a total of 4151 registered voters.
Wyk 4 bestaan uit 'n totaal van 4151 geregistreerde kiesers.
 MIN VOTERS/KIESER 3369 NORM 3964 MAX VOTERS/KIESER 4559

VOTING DISTRICT No. STEMDISTRIK No.	VOTING STATION NAME STEMLOKAAL NAAM	NUMBER OF VOTERS GETAL KIESERS	SPLIT VD VERDEELDE SD
10570070	HOLY WISDOM ANGLICAN CHURCH	1066	
10790388	ROMAN CATHOLIC CHURCH	807	
10570058	NOLITHA JUNIOR SECONDARY SCHOOL	2278	

Ward 5 comprises of a total of 4213 registered voters.
Wyk 5 bestaan uit 'n totaal van 4213 geregistreerde kiesers.
 MIN VOTERS/KIESER 3369 NORM 3964 MAX VOTERS/KIESER 4559

VOTING DISTRICT No. STEMDISTRIK No.	VOTING STATION NAME STEMLOKAAL NAAM	NUMBER OF VOTERS GETAL KIESERS	SPLIT VD VERDEELDE SD
10570069	MBANGA HALL	1488	
10790085	MAYEKISO TENT	308	
10570171	IBIKA TENT	576	
10570137	HIGH VIEW PRIMARY SCHOOL	518	
10570104	TALLY FACTORY	1323	

Ward 6 comprises of a total of 3565 registered voters.
Wyk 6 bestaan uit 'n totaal van 3565 geregistreerde kiesers.
 MIN VOTERS/KIESER 3369 NORM 3964 MAX VOTERS/KIESER 4559

VOTING DISTRICT No. STEMDISTRIK No.	VOTING STATION NAME STEMLOKAAL NAAM	NUMBER OF VOTERS GETAL KIESERS	SPLIT VD VERDEELDE SD
10790131	EASTERN CAPE TECHNIKON	1847	
10790614	ZANOKHANYO JUNIOR SECONDARY SCHOOL	522	
10570115	KULILE JUNIOR SECONDARY SCHOOL	815	
10790715	HIGHWAY LODGE	381	

Ward 7 comprises of a total of 3973 registered voters.
Wyk 7 bestaan uit 'n totaal van 3973 geregistreerde kiesers.
 MIN VOTERS/KIESER 3369 NORM 3964 MAX VOTERS/KIESER 4559

VOTING DISTRICT No. STEMDISTRIK No.	VOTING STATION NAME STEMLOKAAL NAAM	NUMBER OF VOTERS GETAL KIESERS	SPLIT VD VERDEELDE SD
10790377	VELDMAN JUNIOR SECONDARY SCHOOL	422	
10790119	JF MTSHIKI JUNIOR SECONDARY SCHOOL	544	
10790322	IZAGWITYI JUNIOR SECONDARY SCHOOL	587	
10790300	BULUBE JUNIOR SECONDARY SCHOOL	447	
10570047	EMQHAPHINI J.S.S	1516	
10790120	JAMES NGUZA MAWUSHENI TENT	124	
10790490	IBIKA JUNIOR SECONDARY SCHOOL	333	

Ward 8 comprises of a total of 3565 registered voters.
Wyk 8 bestaan uit 'n totaal van 3565 geregistreerde kiesers.
 MIN VOTERS/KIESER 3369 NORM 3964 MAX VOTERS/KIESER 4559

VOTING DISTRICT No. STEMDISTRIK No.	VOTING STATION NAME STEMLOKAAL NAAM	NUMBER OF VOTERS GETAL KIESERS	SPLIT VD VERDEELDE SD
10790748	KANYISA J.S.S	207	
10790366	GUGULETHU SENIOR PRIMARY SCHOOL	306	
10790041	MGOMANZI JUNIOR SECONDARY SCHOOL	710	

10790030	LUKHANYO SECONDARY PRIMARY SCHOOL	385
10790726	G S MAGOBIANE JUNIOR SECONDARY SCHOOL	157
10790580	UPPER CERU JUNIOR SECONDARY SCHOOL	442
10790579	ZAZINI SENIOR PRIMARY SCHOOL	371
10790681	NDABANKULU SENIOR SECONDARY SCHOOL	248
10790333	UPPER MGOMANZI JUNIOR SECONDARY SCHOOL	240
10790153	CEGCUWANA JUNIOR SECONDARY SCHOOL	499

Ward 9 comprises of a total of 3720 registered voters.
Wyk 9 bestaan uit 'n totaal van 3720 geregistreerde kiesers.

MIN VOTERS/KIESER 3369 NORM 3964 MAX VOTERS/KIESER 4559

VOTING DISTRICT No. STEMDISTRIK No.	VOTING STATION NAME STEMLOKAAL NAAM	NUMBER OF VOTERS GETAL KIESERS	SPLIT VD VERDEELDE SD
10790052	DAVIES JUNIOR SECONDARY SCHOOL	1119	
10790164	CERU JUNIOR SECONDARY SCHOOL	397	
10790175	MPENDUZA JUNIOR SECONDARY SCHOOL	291	
10790287	EMPUMALANGA JUNIOR SECONDARY SCHOOL	474	
10790298	TOBOTSHANA JUNIOR SECONDARY SCHOOL	772	
10790535	LOWER TOBOTSHANA SCHOOL	291	
10790603	MZAZI SENIOR PRIMARY SCHOOL	376	

Ward 10 comprises of a total of 3549 registered voters.
Wyk 10 bestaan uit 'n totaal van 3549 geregistreerde kiesers.

MIN VOTERS/KIESER 3369 NORM 3964 MAX VOTERS/KIESER 4559

VOTING DISTRICT No. STEMDISTRIK No.	VOTING STATION NAME STEMLOKAAL NAAM	NUMBER OF VOTERS GETAL KIESERS	SPLIT VD VERDEELDE SD
10790557	MZANTSI SCHOOL	146	
10790029	TONGWANA	458	
10790669	VULUHLANGA JUNIOR SECONDARY SCHOOL	120	
10790524	NDOTSHANGA JUNIOR SECONDARY SCHOOL	267	
10790513	BHELENI JUNIOR SECONDARY SCHOOL	271	
10790344	BAWA JUNIOR SECONDARY SCHOOL	287	
10790399	MKRWAQA JUNIOR SECONDARY SCHOOL	223	
10790276	MQAMBELI JUNIOR SECONDARY SCHOOL	506	
10790096	DALUHLANGA SENIOR SECONDARY SCHOOL	518	
10790210	VUKANI JUNIOR SECONDARY SCHOOL	477	
10790401	MTINTSILANA JUNIOR SECONDARY SCHOOL	276	

Ward 11 comprises of a total of 4302 registered voters.
Wyk 11 bestaan uit 'n totaal van 4302 geregistreerde kiesers.
 MIN VOTERS/KIESER 3369 NORM 3964 MAX VOTERS/KIESER 4559

VOTING DISTRICT No. STEMDISTRIK No.	VOTING STATION NAME STEMLOKAAL NAAM	NUMBER OF VOTERS GETAL KIESERS	SPLIT VD VERDEELDE SD
10790502	ZIBHITYOLO SCHOOL	91	
10790254	XAXASHIMBA JUNIOR SECONDARY SCHOOL	402	
10790243	KOBODI JUNIOR SECONDARY SCHOOL	296	
10790232	MAHLUBINI JUNIOR SECONDARY SCHOOL	294	
10790221	NGQUTU JUNIOR SECONDARY SCHOOL	491	
10790355	DEPLU JUNIOR SECONDARY SCHOOL	264	
10790445	FUNDISA JUNIOR SECONDARY SCHOOL	267	
10790456	MANQULO JUNIOR SECONDARY SCHOOL	593	
10790467	MBONGENDLU SENIOR PRIMARY SCHOOL	174	
10790478	NOMPUCUKO SENIOR SECONDARY SCHOOL	144	
10790265	DIYA JUNIOR SECONDARY SCHOOL	303	
10790489	SPRINGS JUNIOR SECONDARY SCHOOL	276	
10790108	MACLAY JUNIOR SECONDARY SCHOOL	358	
10790670	SISEMENI SCHOOL	66	
10790737	NTABITSOLO J.S.S	141	
10790625	SAMARIA SENIOR PRIMARY SCHOOL	142	

Ward 12 comprises of a total of 3792 registered voters.
Wyk 12 bestaan uit 'n totaal van 3792 geregistreerde kiesers.
 MIN VOTERS/KIESER 3369 NORM 3964 MAX VOTERS/KIESER 4559

VOTING DISTRICT No. STEMDISTRIK No.	VOTING STATION NAME STEMLOKAAL NAAM	NUMBER OF VOTERS GETAL KIESERS	SPLIT VD VERDEELDE SD
10790434	NKULULEKO JUNIOR SECONDARY SCHOOL	489	
10790209	SAWUTANA JUNIOR SECONDARY SCHOOL	449	
10790197	NDABAKAZI JUNIOR SECONDARY SCHOOL	372	
10790186	CUNNINGHAM SENIOR SECONDARY SCHOOL	643	
10790423	LENGENI JUNIOR SECONDARY SCHOOL	467	
10790636	GXAKHULU TENT	104	
10790692	NOZULU SENIOR PRIMARY SCHOOL	331	
10790074	QEQE JUNIOR SECONDARY SCHOOL	504	
10790568	DALUKHANYO SENIOR PRIMARY SCHOOL	433	

Ward 13 comprises of a total of 3674 registered voters.
Wyk 13 bestaan uit 'n totaal van 3674 geregistreerde kiesers.
 MIN VOTERS/KIESER 3369 NORM 3964 MAX VOTERS/KIESER 4559

VOTING DISTRICT No. STEMDISTRIK No.	VOTING STATION NAME STEMLOKAAL NAAM	NUMBER OF VOTERS GETAL KIESERS	SPLIT VD VERDEELDE SD
10910854	SOKAPASE JUNIOR SECONDARY SCHOOL	227	
10910225	MANGONDINI JUNIOR SECONDARY SCHOOL	441	
10910236	KWEZI JUNIOR SECONDARY SCHOOL	468	
10910247	CEGCUWANA JUNIOR SECONDARY SCHOOL	744	
10790142	BETHEL JUNIOR SECONDARY SCHOOL	508	
10910269	LOWER GCEGCUANE JUNIOR SECONDARY SCHOOL	477	
10911013	NDAKANA JUNIOR SECONDARY SCHOOL	272	
10910281	BLYTHSWOOD JUNIOR SECONDARY SCHOOL	537	

Ward 14 comprises of a total of 3907 registered voters.
Wyk 14 bestaan uit 'n totaal van 3907 geregistreerde kiesers.
 MIN VOTERS/KIESER 3369 NORM 3964 MAX VOTERS/KIESER 4559

VOTING DISTRICT No. STEMDISTRIK No.	VOTING STATION NAME STEMLOKAAL NAAM	NUMBER OF VOTERS GETAL KIESERS	SPLIT VD VERDEELDE SD
10910056	NYILI JUNIOR SECONDARY SCHOOL	167	
10910786	NTSHATSHONGA JUNIOR SECONDARY SCHOOL	404	
10910731	MACHIBINI JUNIOR SECONDARY SCHOOL	328	
10910157	JONGABANTU SENIOR SECONDARY SCHOOL	239	
10910090	TANDA JUNIOR SECONDARY SCHOOL	355	
10910102	DIPENDE CHURCH	436	
10910124	JONGIBANDLA JUNIOR SECONDARY SCHOOL	442	
10910652	KIVIET SUKWANA JUNIOR SECONDARY SCHOOL	166	
10910113	NGCINGCINIKWE JUNIOR SECONDARY SCHOOL	184	
10910742	MBIZA JUNIOR SECONDARY SCHOOL	219	
10910135	TYNIRA JUNIOR SECONDARY SCHOOL	624	
10910089	LANGA JUNIOR SECONDARY SCHOOL	343	

Ward 15 comprises of a total of 3598 registered voters.
Wyk 15 bestaan uit 'n totaal van 3598 geregistreerde kiesers.
 MIN VOTERS/KIESER 3369 NORM 3964 MAX VOTERS/KIESER 4559

VOTING DISTRICT No. STEMDISTRIK No.	VOTING STATION NAME STEMLOKAAL NAAM	NUMBER OF VOTERS GETAL KIESERS	SPLIT VD VERDEELDE SD
--	--	-----------------------------------	--------------------------

10910876	MAJAMANENI JUNIOR PRIMARY SCHOOL	104
10910641	NYIDLANA JUNIOR SECONDARY SCHOOL	163
10910630	ZAKHELE SENIOR PRIMARY SCHOOL	251
10910180	LOWER NDAKANA JUNIOR SECONDARY SCHOOL	215
10910865	SIVANXA	335
10911024	KUYASA SENIOR PRIMARY SCHOOL	151
10910067	SONJICA JUNIOR SECONDARY SCHOOL	262
10910012	LOWER NQANCULE JUNIOR SECONDARY SCHOOL	313
10910168	NTLEBI JUNIOR SECONDARY SCHOOL	209
10910034	BHISHIBHA JUNIOR SECONDARY SCHOOL	389
10910900	BIYANA JUNIOR SECONDARY SCHOOL	115
10910898	EDIPHINI JUNIOR SECONDARY SCHOOL	167
10910887	NGUNIKAZI JUNIOR PRIMARY SCHOOL	145
10910191	RWANTSANA JUNIOR SECONDARY SCHOOL	202
10910719	MAZANTSI JUNIOR SECONDARY SCHOOL	77
10910203	HEBE-HEBE JUNIOR SECONDARY SCHOOL	500

Ward 16	comprises of a total of 4141	registered voters.
Wyk 16	bestaan uit 'n totaal van 4141	geregistreeerde kiesers.
MIN VOTERS/KIESER	3369	NORM 3964
		MAX VOTERS/KIESER 4559

VOTING DISTRICT No.	VOTING STATION NAME	NUMBER OF VOTERS	SPLIT VD
STEMDISTRIK No.	STEMLOKAAL NAAM	GETAL KIESERS	VERDEELDE SD
10910832	GCISININDE	203	
10910663	GONTSHI JUNIOR SECONDARY SCHOOL	326	
10910023	NOBANDA JUNIOR SECONDARY SCHOOL	335	
10910078	MWELI JUNIOR SECONDARY SCHOOL	287	
10910720	MASIBAMBANE JUNIOR PRIMARY SCHOOL	215	
10910304	AMABELE TRIBAL AUTHORITY	866	
10910045	NGCISININDE JUNIOR SECONDARY SCHOOL	273	
10910618	NGCISININDE JUNIOR SECONDARY SCHOOL MISSION	282	
10910944	NYULULA JUNIOR SECONDARY SCHOOL	162	
10910933	MXHAKA JUNIOR PRIMARY SCHOOL	320	
10910258	DINGISWAYO JUNIOR SECONDARY SCHOOL	282	
10910922	UPPER NOFOTYO JUNIOR SECONDARY SCHOOL	158	
10910911	UPPER NGCULU JUNIOR SECONDARY SCHOOL	432	

Ward 17 comprises of a total of 3878 registered voters.
Wyk 17 bestaan uit 'n totaal van 3878 geregistreerde kiesers.
 MIN VOTERS/KIESER 3369 NORM 3964 MAX VOTERS/KIESER 4559

VOTING DISTRICT No. STEMDISTRIK No.	VOTING STATION NAME STEMLOKAAL NAAM	NUMBER OF VOTERS GETAL KIESERS	SPLIT VD VERDEELDE SD
10910337	NOMAHEYA JUNIOR SECONDARY SCHOOL	313	
10910584	MERILEES JUNIOR SECONDARY SCHOOL	370	
10940532	XUME JUNIOR SECONDARY SCHOOL	98	
10910629	TOBOYI JUNIOR SECONDARY SCHOOL	412	
10910573	GUDLA JUNIOR SECONDARY SCHOOL	602	
10910461	LAMBATA JUNIOR SECONDARY SCHOOL	337	
10910371	MNGCANGCATELO JUNIOR SECONDARY SCHOOL	503	
10910810	ZITHULELE JUNIOR SECONDARY SCHOOL	277	
10910607	DUDUMASHE JUNIOR SECONDARY SCHOOL	720	
10910955	KUNENE JUNIOR SECONDARY SCHOOL	246	

Ward 18 comprises of a total of 3731 registered voters.
Wyk 18 bestaan uit 'n totaal van 3731 geregistreerde kiesers.
 MIN VOTERS/KIESER 3369 NORM 3964 MAX VOTERS/KIESER 4559

VOTING DISTRICT No. STEMDISTRIK No.	VOTING STATION NAME STEMLOKAAL NAAM	NUMBER OF VOTERS GETAL KIESERS	SPLIT VD VERDEELDE SD
10700019	NQAMAKWE TOWN HALL	646	
10910360	GOVAN JUNIOR SECONDARY SCHOOL	365	
10910359	MPAHLENI JUNIOR SECONDARY SCHOOL	385	
10910315	NQAMAKWE JUNIOR SECONDARY SCHOOL	513	
10810662	NONTLOKO SCHOOL	281	
10910292	TUNGA JUNIOR SECONDARY SCHOOL	320	
10910326	MEKENI JUNIOR SECONDARY SCHOOL	344	
10910674	EZIFLATINI JUNIOR SECONDARY SCHOOL	304	
10910753	LOWER NQAMAKWE JUNIOR SECONDARY SCHOOL	361	
10910966	VUKUKANYE JUNIOR SECONDARY SCHOOL	212	

Ward 19 comprises of a total of 3610 registered voters.
Wyk 19 bestaan uit 'n totaal van 3610 geregistreerde kiesers.
 MIN VOTERS/KIESER 3369 NORM 3964 MAX VOTERS/KIESER 4559

VOTING DISTRICT No. STEMDISTRIK No.	VOTING STATION NAME STEMLOKAAL NAAM	NUMBER OF VOTERS GETAL KIESERS	SPLIT VD VERDEELDE SD
--	--	-----------------------------------	--------------------------

10910528	SIHLABENI JUNIOR SECONDARY SCHOOL	622
10910775	JEKEZI JUNIOR SECONDARY SCHOOL	284
10911002	TEMPORARY VOTING STATION (KOTANA VILLAGE TE	222
10910494	UPPER KOTANA JUNIOR SECONDARY SCHOOL	300
10910595	PETER QONGO CHURCH	332
10910539	GUBEVU JUNIOR SECONDARY SCHOOL	392
10910540	MASELENI JUNIOR SECONDARY SCHOOL	358
10910764	XILINXA SENIOR SECONDARY SCHOOL	359
10910551	NTSESHE JUNIOR SECONDARY SCHOOL	471
10910562	SIQITHINI JUNIOR SECONDARY SCHOOL	270

Ward 20 comprises of a total of 3858 registered voters.
Wyk 20 bestaan uit 'n totaal van 3858 geregistreerde kiesers.
MIN VOTERS/KIESER 3369 NORM 3964 MAX VOTERS/KIESER 4559

VOTING DISTRICT No. STEMDISTRIK No.	VOTING STATION NAME STEMLOKAAL NAAM	NUMBER OF VOTERS GETAL KIESERS	SPLIT VD VERDEELDE SD
10910393	NOMJANA JUNIOR SECONDARY SCHOOL	462	
10910382	QIMA JUNIOR SECONDARY SCHOOL	218	
10810640	NKQUBELA SCHOOL	216	
10790658	KHAYALETHU JUNIOR SECONDARY SCHOOL	476	
10910348	MPETA JUNIOR SECONDARY SCHOOL	488	
10910977	LINDSAY JUNIOR SECONDARY SCHOOL	418	
10910999	MZANTSI-MPETHA JUNIOR PRIMARY SCHOOL	241	
10910506	NOXHAKAZA JUNIOR SECONDARY SCHOOL	560	
10910517	KOTANA JUNIOR SECONDARY SCHOOL	388	
10790018	ZINGQAYI JUNIOR SECONDARY SCHOOL	391	

Ward 21 comprises of a total of 3698 registered voters.
Wyk 21 bestaan uit 'n totaal van 3698 geregistreerde kiesers.
MIN VOTERS/KIESER 3369 NORM 3964 MAX VOTERS/KIESER 4559

VOTING DISTRICT No. STEMDISTRIK No.	VOTING STATION NAME STEMLOKAAL NAAM	NUMBER OF VOTERS GETAL KIESERS	SPLIT VD VERDEELDE SD
10910685	TSHAZIBANE JUNIOR SECONDARY SCHOOL	379	
10910483	SISEKO JUNIOR SECONDARY SCHOOL	289	
10910416	EMGCWE JUNIOR SECONDARY SCHOOL	332	
10910472	HLOBO JUNIOR SECONDARY SCHOOL	235	
10790647	KUYASA SENIOR PRIMARY SCHOOL	241	

10910427	MANKIHLANA JUNIOR SECONDARY SCHOOL	220
10910449	EZIZWENI SENIOR SECONDARY SCHOOL	320
10910809	MALONGWENI JUNIOR SECONDARY SCHOOL	211
10910797	LUNDI JUNIOR SECONDARY SCHOOL	278
10910438	QOLIWE JUNIOR SECONDARY SCHOOL	354
10910450	LAHLANGUBO JUNIOR SECONDARY SCHOOL	251
10910988	LINGELETHU SENIOR PRIMARY SCHOOL	317
10910821	NOKHAYO JUNIOR PRIMARY SCHOOL	271

Ward 22 comprises of a total of 3827 registered voters.
Wyk 22 bestaan uit 'n totaal van 3827 geregistreerde kiesers.
 MIN VOTERS/KIESER 3369 NORM 3964 MAX VOTERS/KIESER 4559

VOTING DISTRICT No. STEMDISTRIK No.	VOTING STATION NAME STEMLOKAAL NAAM	NUMBER OF VOTERS GETAL KIESERS	SPLIT VD VERDEELDE SD
10840058	BUSILA JUNIOR SECONDARY SCHOOL	598	
10840047	MFANZI JUNIOR SECONDARY SCHOOL	512	
10840036	CAFUTWENI JUNIOR SECONDARY SCHOOL	832	
10850464	LOWER QORA JUNIOR SECONDARY SCHOOL	552	
10790591	KWAMAGALAKANGA SCHOOL	524	
10841307	ZWELANDILE JUNIOR SECONDARY SCHOOL	455	
10851117	BLUE SKY JUNIOR SECONDARY SCHOOL	354	

Ward 23 comprises of a total of 3880 registered voters.
Wyk 23 bestaan uit 'n totaal van 3880 geregistreerde kiesers.
 MIN VOTERS/KIESER 3369 NORM 3964 MAX VOTERS/KIESER 4559

VOTING DISTRICT No. STEMDISTRIK No.	VOTING STATION NAME STEMLOKAAL NAAM	NUMBER OF VOTERS GETAL KIESERS	SPLIT VD VERDEELDE SD
10810459	XHOBANI JUNIOR SECONDARY SCHOOL	269	
10810819	MTUNZI JUNIOR SECONDARY SCHOOL	191	
10810842	MRAUZELI TENT	475	
10810224	BOTOMANE JUNIOR SECONDARY SCHOOL	373	
10810246	WONGALETHU JUNIOR SECONDARY SCHOOL	287	
10810257	BURU JUNIOR SECONDARY SCHOOL	898	
10810279	ISINGQINI SENIOR PRIMARY SCHOOL	315	
10810291	QOBOQOBO JUNIOR SECONDARY SCHOOL	815	
10810314	MAPASA JUNIOR SECONDARY SCHOOL	257	

Ward 24	comprises of a total of 4447	registered voters.
Wyk 24	bestaan uit 'n totaal van 4447	geregistreerde kiesers.
MIN VOTERS/KIESER	3369	NORM 3964 MAX VOTERS/KIESER 4559

VOTING DISTRICT No.	VOTING STATION NAME	NUMBER OF VOTERS	SPLIT VD
STEMDISTRIK No.	STEMLOKAAL NAAM	GETAL KIESERS	VERDEELDE SD
10810831	SALAKUPHATHWA JUNIOR SECONDARY SCHOOL	336	
10810651	THEKO FIHLA JUNIOR SECONDARY SCHOOL	626	
10810864	NGUBEZULU J.S.S	165	
10810606	QUMBULWANA JUNIOR SECONDARY SCHOOL	229	
10810213	MAQELE JUNIOR SECONDARY SCHOOL	810	
10790704	BOOI FARM	279	
10810303	TEKO KONA JUNIOR SECONDARY SCHOOL	564	
10810280	TEKO SPRINGS JUNIOR SECONDARY SCHOOL	873	
10810202	ANTA JUNIOR PRIMARY SCHOOL	565	

Ward 25	comprises of a total of 3876	registered voters.
Wyk 25	bestaan uit 'n totaal van 3876	geregistreerde kiesers.
MIN VOTERS/KIESER	3369	NORM 3964 MAX VOTERS/KIESER 4559

VOTING DISTRICT No.	VOTING STATION NAME	NUMBER OF VOTERS	SPLIT VD
STEMDISTRIK No.	STEMLOKAAL NAAM	GETAL KIESERS	VERDEELDE SD
10810055	TIYO SOGA JUNIOR SECONDARY SCHOOL	801	
10810594	KWA KHABAKAZI SCHOOL	487	
10810189	DALIBANGO JUNIOR SECONDARY SCHOOL	711	
10810077	NGUNDUZA JUNIOR PRIMARY SCHOOL	588	
10840238	NDONQA JUNIOR SECONDARY SCHOOL	257	
10841396	NYITYHABA JUNIOR SECONDARY SCHOOL	374	
10810101	CENTULI JUNIOR SECONDARY SCHOOL	658	

Ward 26	comprises of a total of 4260	registered voters.
Wyk 26	bestaan uit 'n totaal van 4260	geregistreerde kiesers.
MIN VOTERS/KIESER	3369	NORM 3964 MAX VOTERS/KIESER 4559

VOTING DISTRICT No.	VOTING STATION NAME	NUMBER OF VOTERS	SPLIT VD
STEMDISTRIK No.	STEMLOKAAL NAAM	GETAL KIESERS	VERDEELDE SD
10810785	KHANYISA SENIOR PRIMARY SCHOOL	391	
10810774	NZIMA SENIOR PRIMARY SCHOOL	205	
10810763	COLUMBER CHURCH	64	
10810730	HLOKOMILE JUNIOR SECONDARY SCHOOL	293	

10810729	MANDENDE JUNIOR SECONDARY SCHOOL	168
10810572	NXAXO JUNIOR SECONDARY SCHOOL	291
10810178	GODIDI JUNIOR SECONDARY SCHOOL	628
10810493	MNYAMA JUNIOR SECONDARY SCHOOL	482
10810167	DONDASHE SECONDARY SCHOOL	498
10810099	VUSANI JUNIOR SECONDARY SCHOOL	297
10810404	MAGIQWENI JUNIOR SECONDARY SCHOOL	366
10810392	MACIBE SENIOR SECONDARY SCHOOL	577

Ward 27 comprises of a total of 4357 registered voters.

Wyk 27 bestaan uit 'n totaal van 4357 geregistreerde kiesers.

MIN VOTERS/KIESER 3369

NORM 3964

MAX VOTERS/KIESER 4559

VOTING DISTRICT No. STEMDISTRIK No.	VOTING STATION NAME STEMLOKAAL NAAM	NUMBER OF VOTERS GETAL KIESERS	SPLIT VD VERDEELDE SD
10810550	MAQOMA JUNIOR SECONDARY SCHOOL	565	
10810538	NGQWARHA JUNIOR SECONDARY SCHOOL	463	
10810549	TEMPORARY VOTING STATION (MANYUBE)	241	
10810561	NDEVUZIBOMVU JUNIOR SECONDARY SCHOOL	301	
10810583	GREVE JUNIOR SECONDARY SCHOOL	190	
10810718	DIKO SENIOR PRIMARY SCHOOL	193	
10810527	CEBE JUNIOR SECONDARY SCHOOL	553	
10810853	ZALU JUNIOR SECONDARY SCHOOL	317	
10810033	GQUNQE JUNIOR PRIMARY SCHOOL	431	
10810011	GCINA JUNIOR PRIMARY SCHOOL	674	
10810145	LUSIZI JUNIOR SECONDARY SCHOOL	429	

Ward 28 comprises of a total of 4235 registered voters.

Wyk 28 bestaan uit 'n totaal van 4235 geregistreerde kiesers.

MIN VOTERS/KIESER 3369

NORM 3964

MAX VOTERS/KIESER 4559

VOTING DISTRICT No. STEMDISTRIK No.	VOTING STATION NAME STEMLOKAAL NAAM	NUMBER OF VOTERS GETAL KIESERS	SPLIT VD VERDEELDE SD
10810268	MANYANO JUNIOR SECONDARY SCHOOL	770	
10810752	MGOBOZI SENIOR PRIMARY SCHOOL	182	
10810673	LESLIE JUNIOR SECONDARY SCHOOL	399	
10810022	NQUSI JUNIOR SECONDARY SCHOOL	435	
10810156	WILI JUNIOR SECONDARY SCHOOL	584	
10810044	NCERANA JUNIOR SECONDARY SCHOOL	491	

10810066	MNYAKA JUNIOR SECONDARY SCHOOL	179
10810134	KOBONQABA MOUTH JUNIOR SECONDARY SCHOOL	630
10810190	CENTANE JUNIOR SECONDARY SCHOOL	565

Ward 29 comprises of a total of 4336 registered voters.
Wyk 29 bestaan uit 'n totaal van 4336 geregistreerde kiesers.

MIN VOTERS/KIESER 3369 NORM 3964 MAX VOTERS/KIESER 4559

VOTING DISTRICT No. STEMDISTRIK No.	VOTING STATION NAME STEMLOKAAL NAAM	NUMBER OF VOTERS GETAL KIESERS	SPLIT VD VERDEELDE SD
10810088	TSHONGWENI JUNIOR SECONDARY SCHOOL	390	
10810516	MAKUKHANYE JUNIOR SECONDARY SCHOOL	152	
10810684	SISEKO JUNIOR SECONDARY SCHOOL	414	
10810695	SEZELA JUNIOR SECONDARY SCHOOL	175	
10810796	DALUXOLO JUNIOR SECONDARY SCHOOL	228	
10810112	QOLORA BY SEA JUNIOR SECONDARY SCHOOL	494	
10810707	TSHAWE SENIOR PRIMARY SCHOOL	282	
10810381	PONANA LUBISI JUNIOR SECONDARY SCHOOL	493	
10810235	LUKHANYO JUNIOR SECONDARY SCHOOL	704	
10810448	QOLORA FENI JUNIOR SECONDARY SCHOOL	688	
10810505	NYUMAGA JUNIOR SECONDARY SCHOOL	316	

Ward 30 comprises of a total of 4117 registered voters.
Wyk 30 bestaan uit 'n totaal van 4117 geregistreerde kiesers.

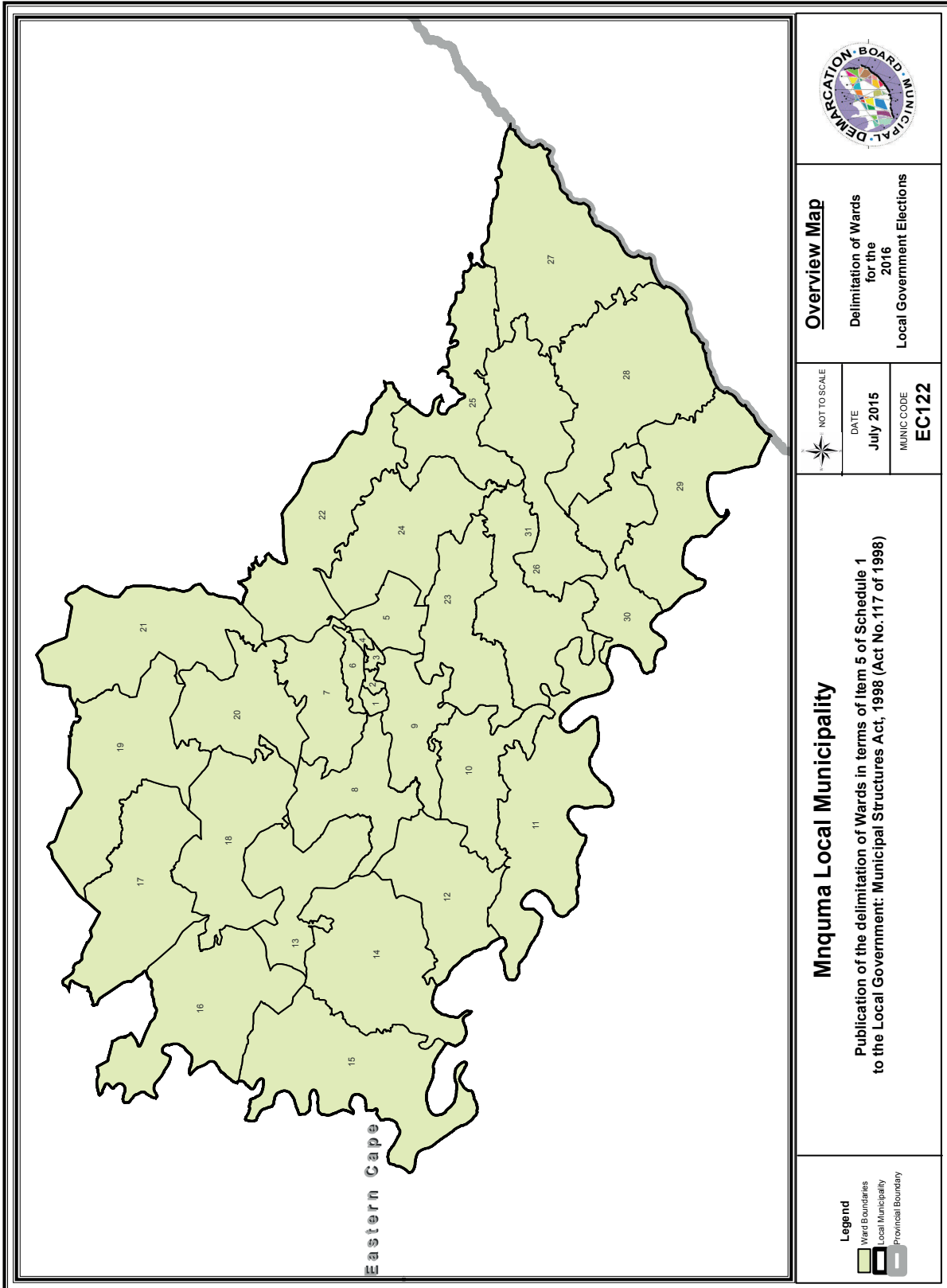
MIN VOTERS/KIESER 3369 NORM 3964 MAX VOTERS/KIESER 4559

VOTING DISTRICT No. STEMDISTRIK No.	VOTING STATION NAME STEMLOKAAL NAAM	NUMBER OF VOTERS GETAL KIESERS	SPLIT VD VERDEELDE SD
10810358	NZANZANA JUNIOR SECONDARY SCHOOL	642	
10810426	KULOMBOMBO SENIOR SECONDARY SCHOOL	354	
10810370	MPENTSEE SCHOOL	296	
10810437	MAMBALU JUNIOR PRIMARY SCHOOL	363	
10810628	MSENTO JUNIOR SECONDARY SCHOOL	277	
10810415	DE VILLIERS MPANGELE JUNIOR SECONDARY SCHO	367	
10660014	CENTANE TOWN HALL	1351	
10810482	QOMBOLO JUNIOR SECONDARY SCHOOL	467	

Ward 31 comprises of a total of 4302 registered voters.
Wyk 31 bestaan uit 'n totaal van 4302 geregistreerde kiesers.

MIN VOTERS/KIESER 3369 NORM 3964 MAX VOTERS/KIESER 4559

VOTING DISTRICT No. STEMDISTRIK No.	VOTING STATION NAME STEMLOKAAL NAAM	NUMBER OF VOTERS GETAL KIESERS	SPLIT VD VERDEELDE SD
10810808	TEMBANI JUNIOR SECONDARY SCHOOL	268	
10810617	GOBE COMMERCIAL SENIOR SECONDARY SCHOOL	580	
10810639	ISIGANGALA SCHOOL	426	
10810741	NGQANDA JUNIOR SECONDARY SCHOOL	287	
10810369	NONYEMBEZI JUNIOR SECONDARY SCHOOL	444	
10810460	JONGINTABA JUNIOR SECONDARY SCHOOL	362	
10810336	HLANGANI JUNIOR SECONDARY SCHOOL	543	
10810820	SEKU SENIOR PRIMARY SCHOOL	217	
10810347	GOBE JUNIOR SECONDARY SCHOOL	492	
10810471	MDANGE JUNIOR SECONDARY SCHOOL	491	
10810325	THALA JUNIOR SECONDARY SCHOOL	192	



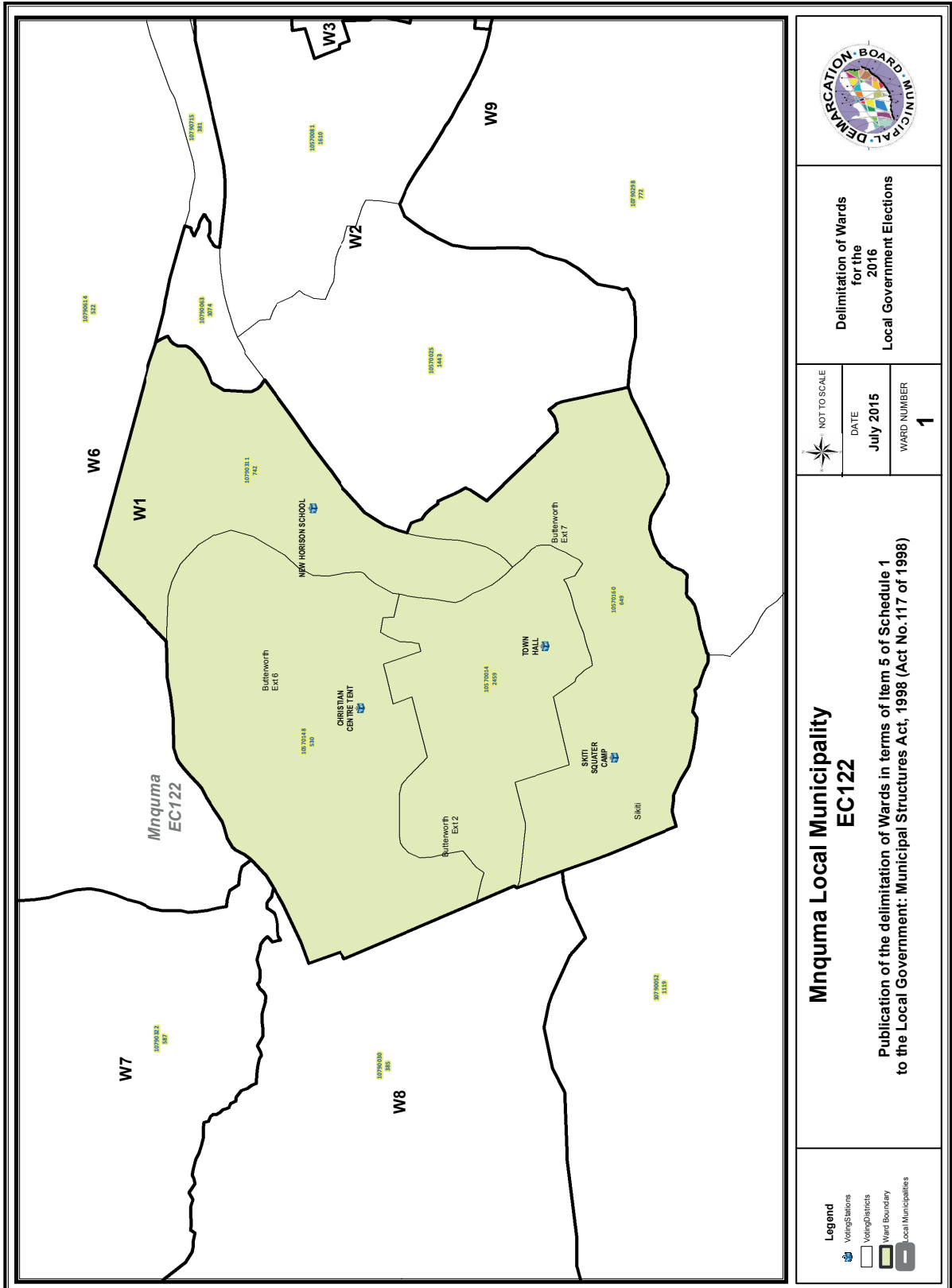
Overview Map
 Delimitation of Wards
 for the
 2016
 Local Government Elections

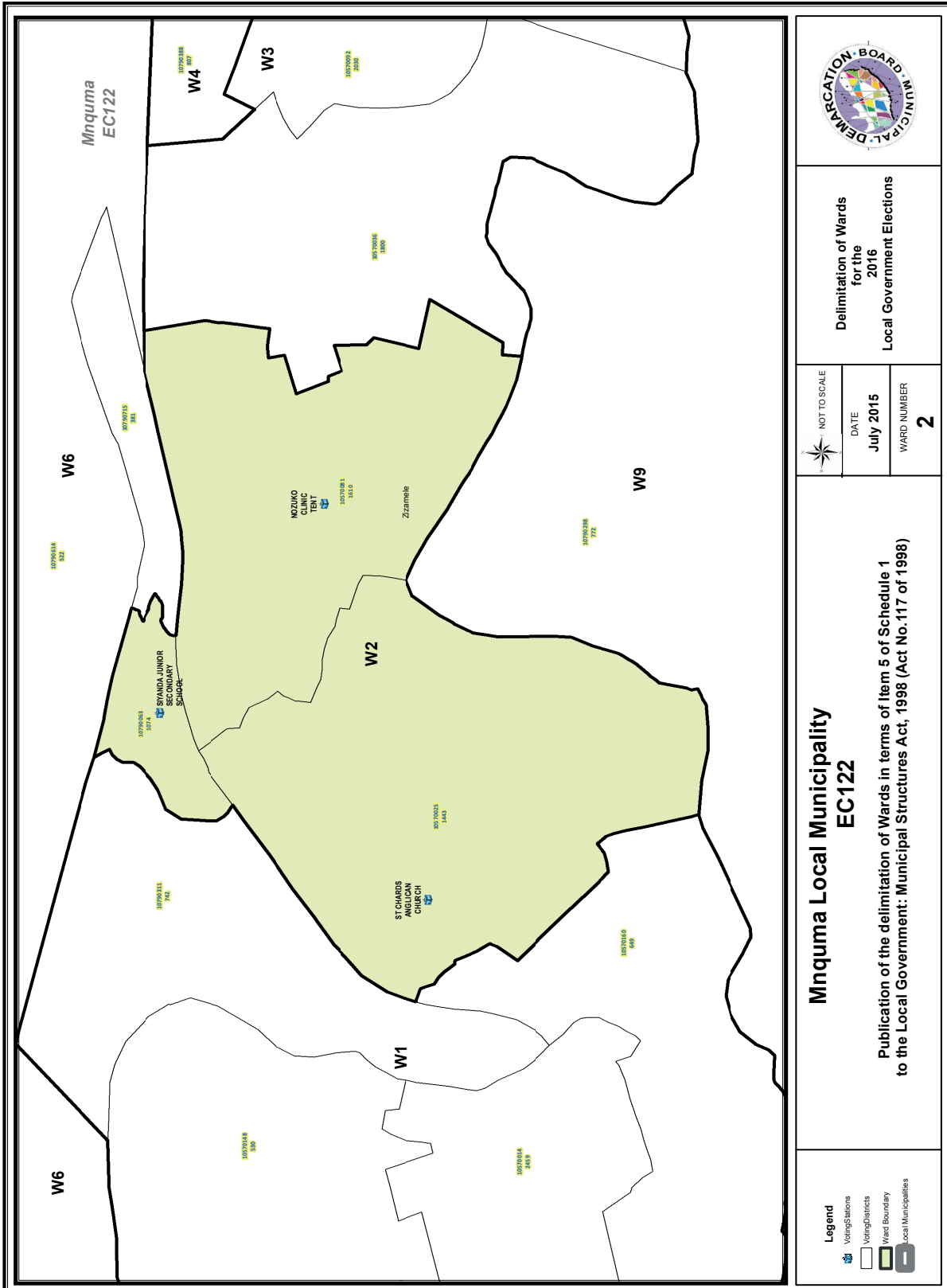
NOT TO SCALE	DATE	MUNIC CODE
	July 2015	EC122

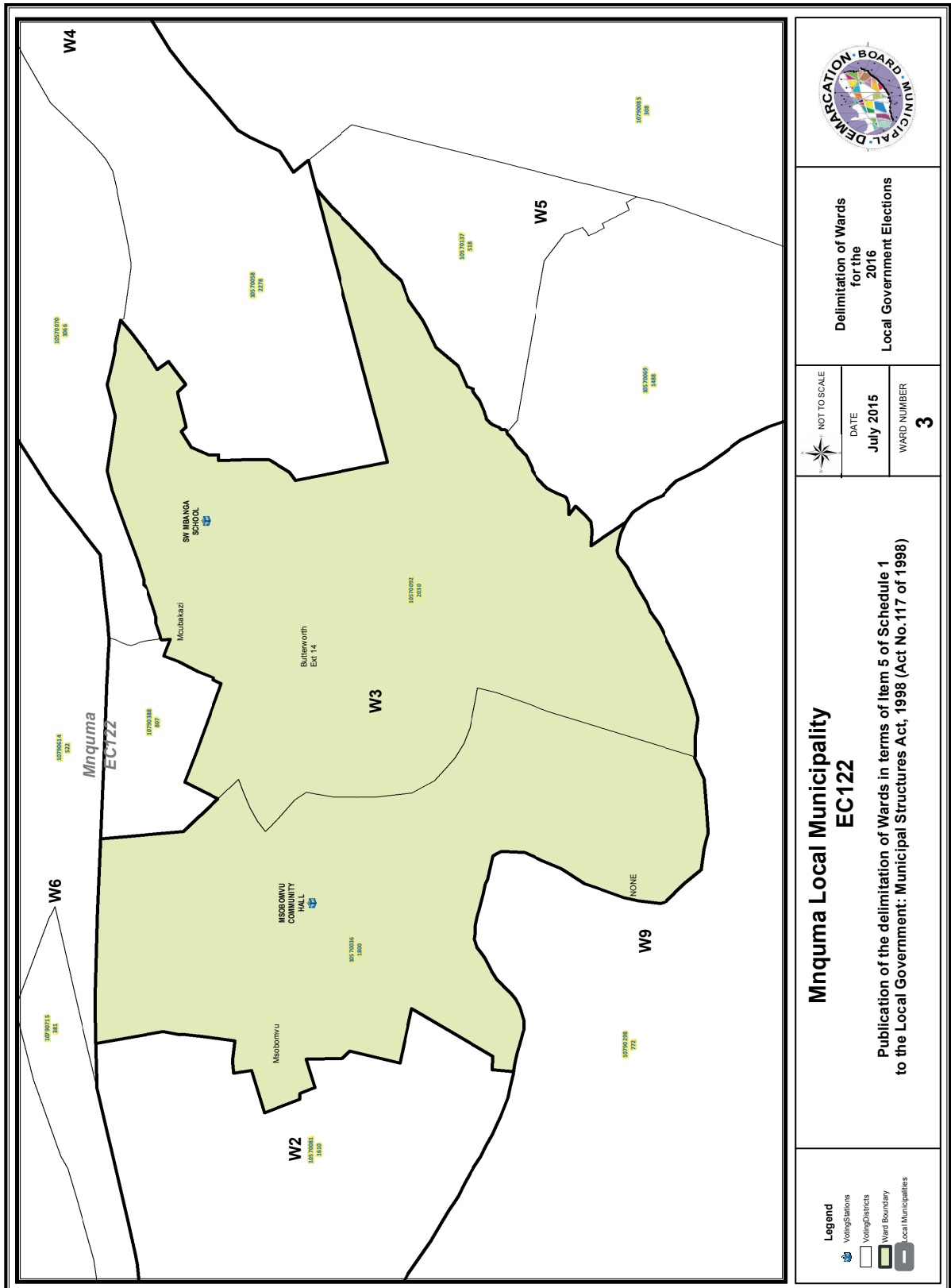
Mnquma Local Municipality
 Publication of the delimitation of Wards in terms of Item 5 of Schedule 1
 to the Local Government: Municipal Structures Act, 1998 (Act No. 117 of 1998)

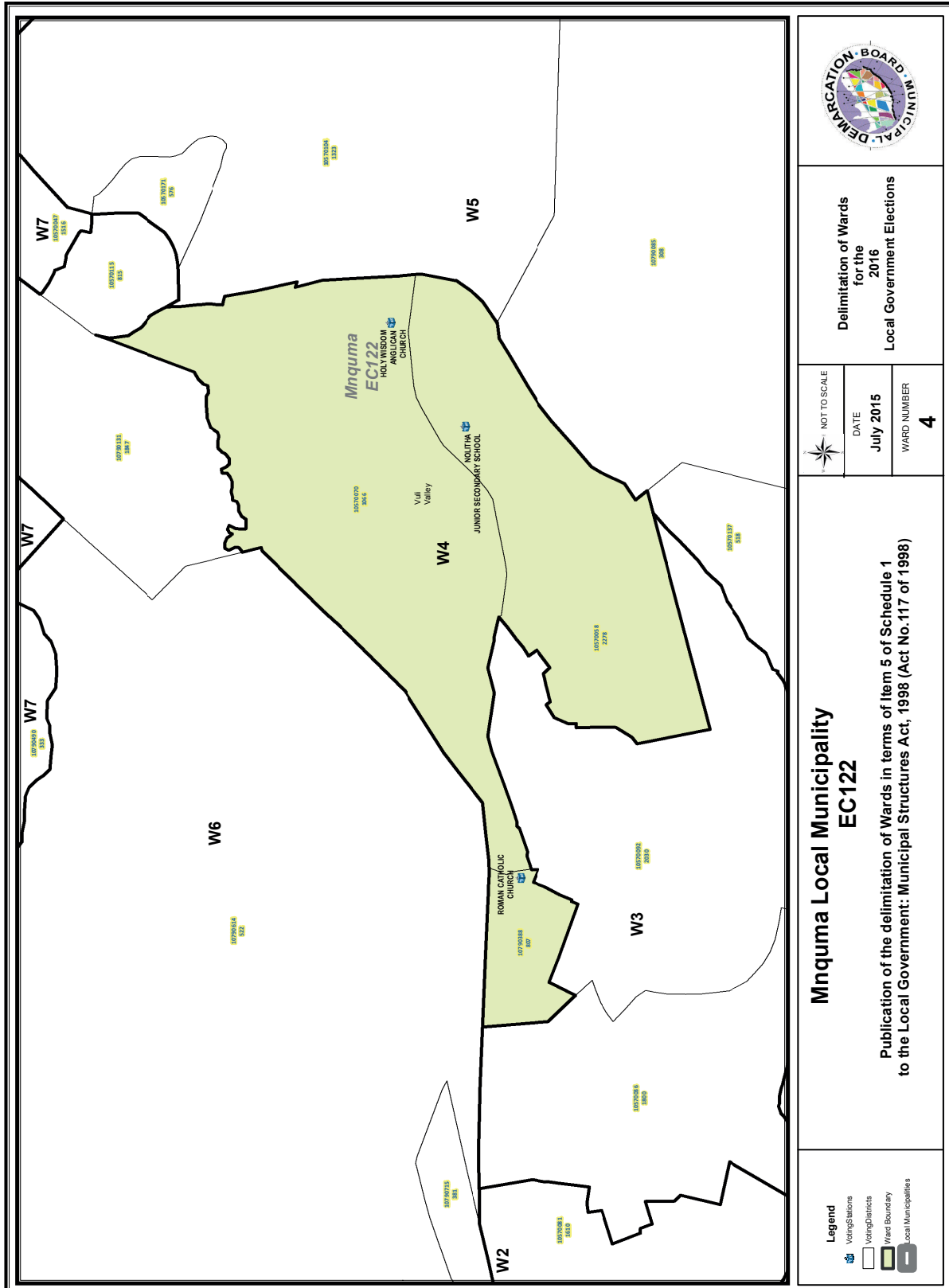
Legend

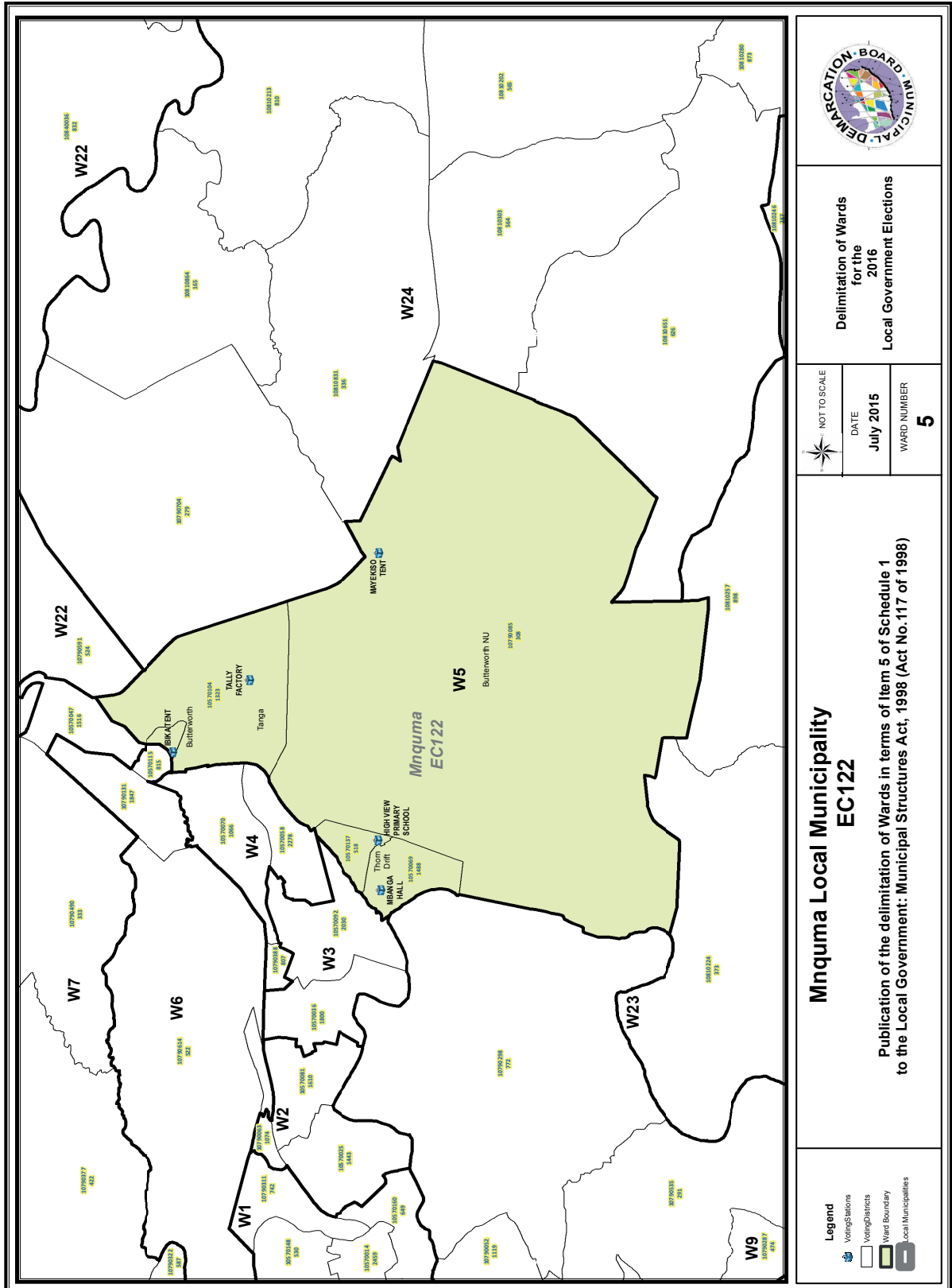
	Ward Boundaries
	Local Municipality
	Provincial Boundary

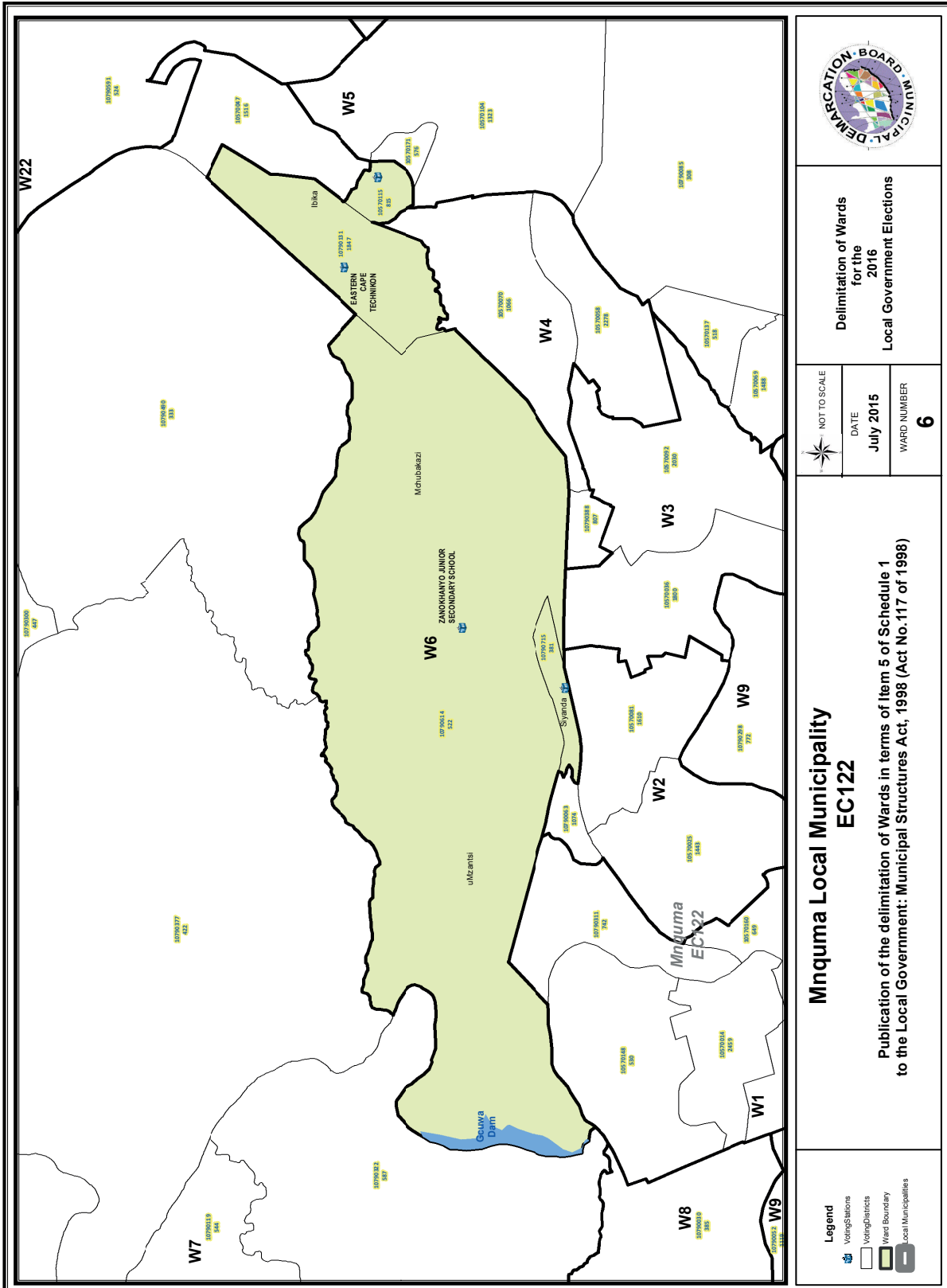












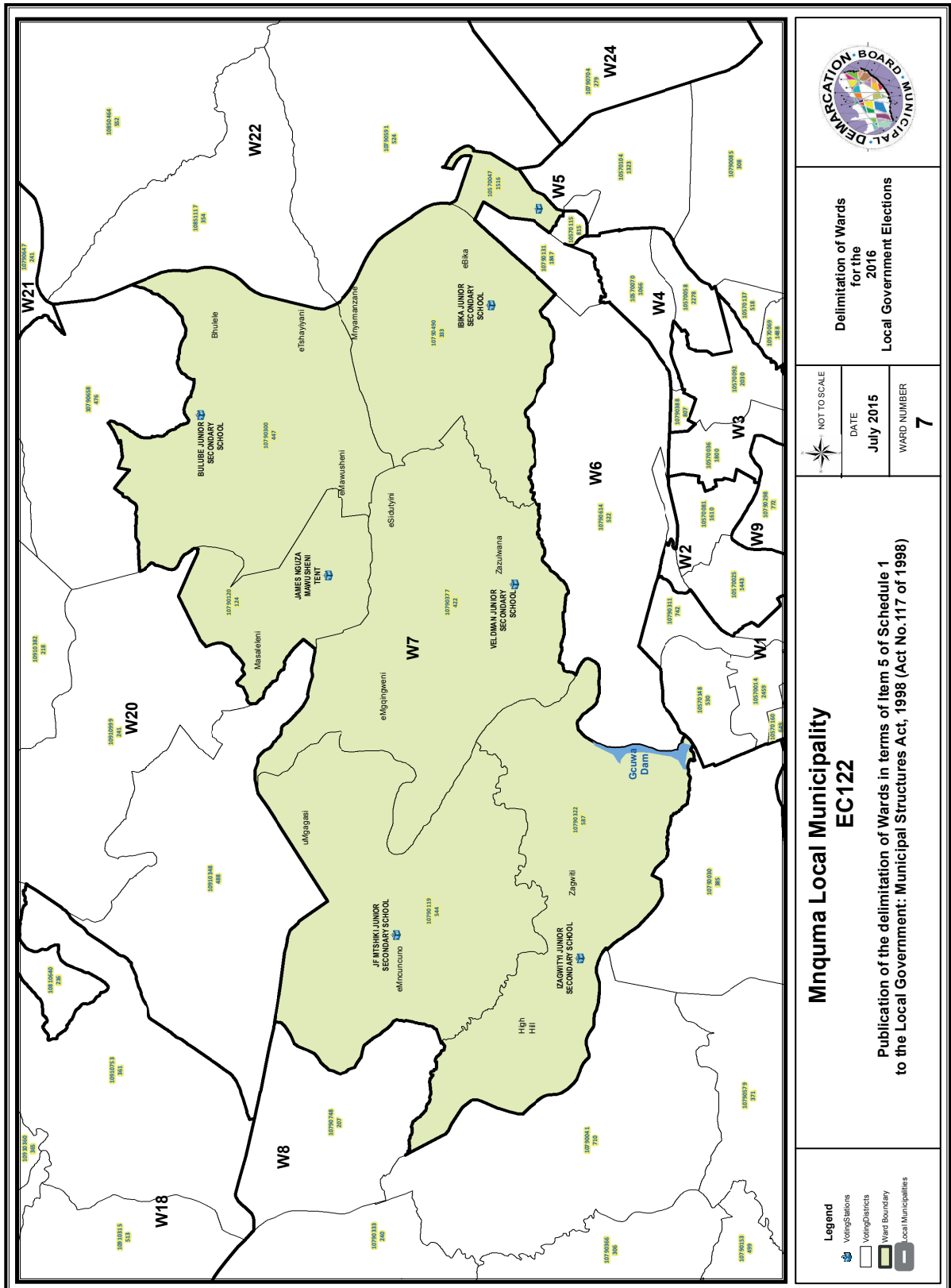
Delimitation of Wards
for the
2016
Local Government Elections

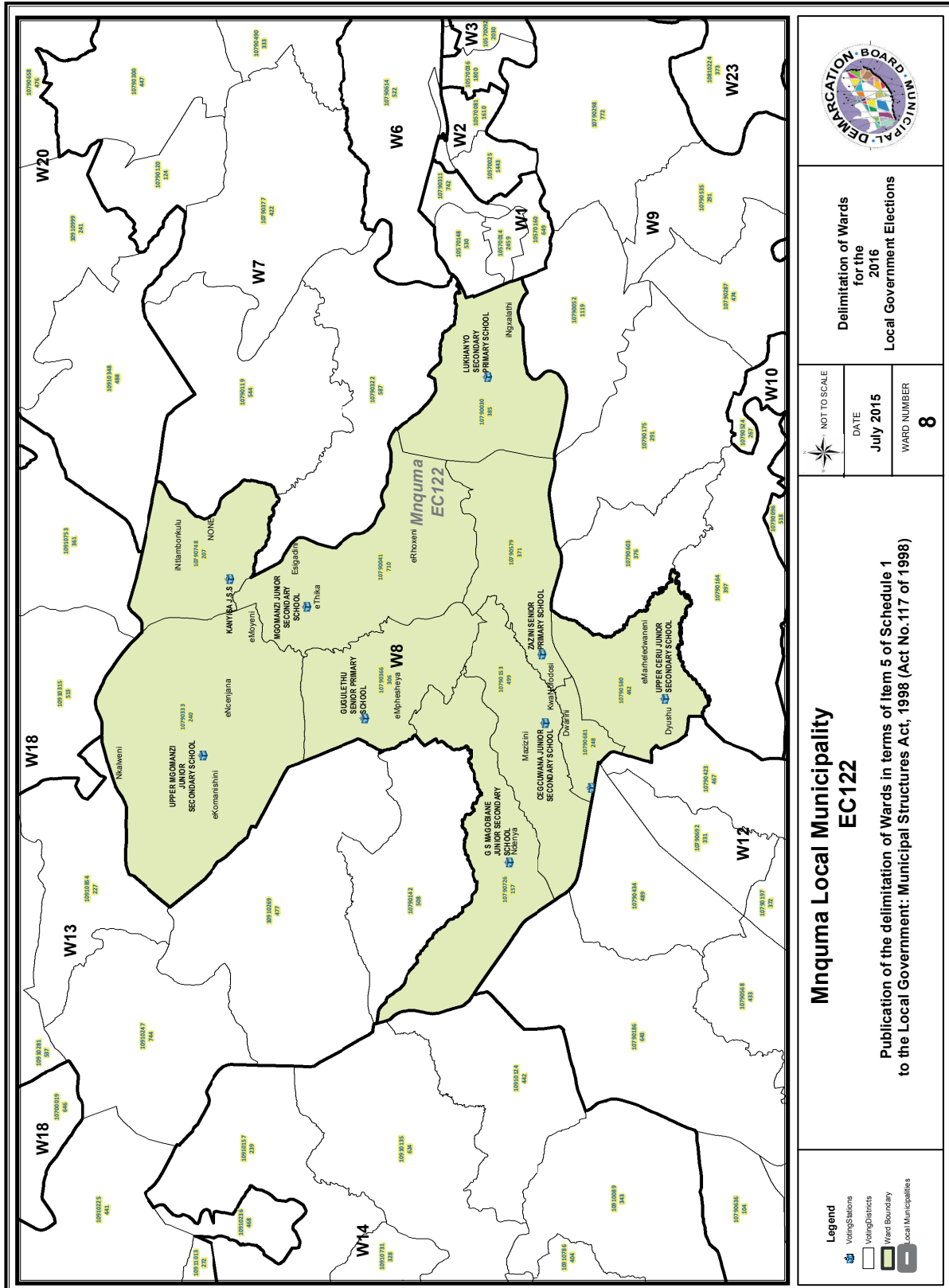
NOT TO SCALE
DATE
July 2015
WARD NUMBER
6

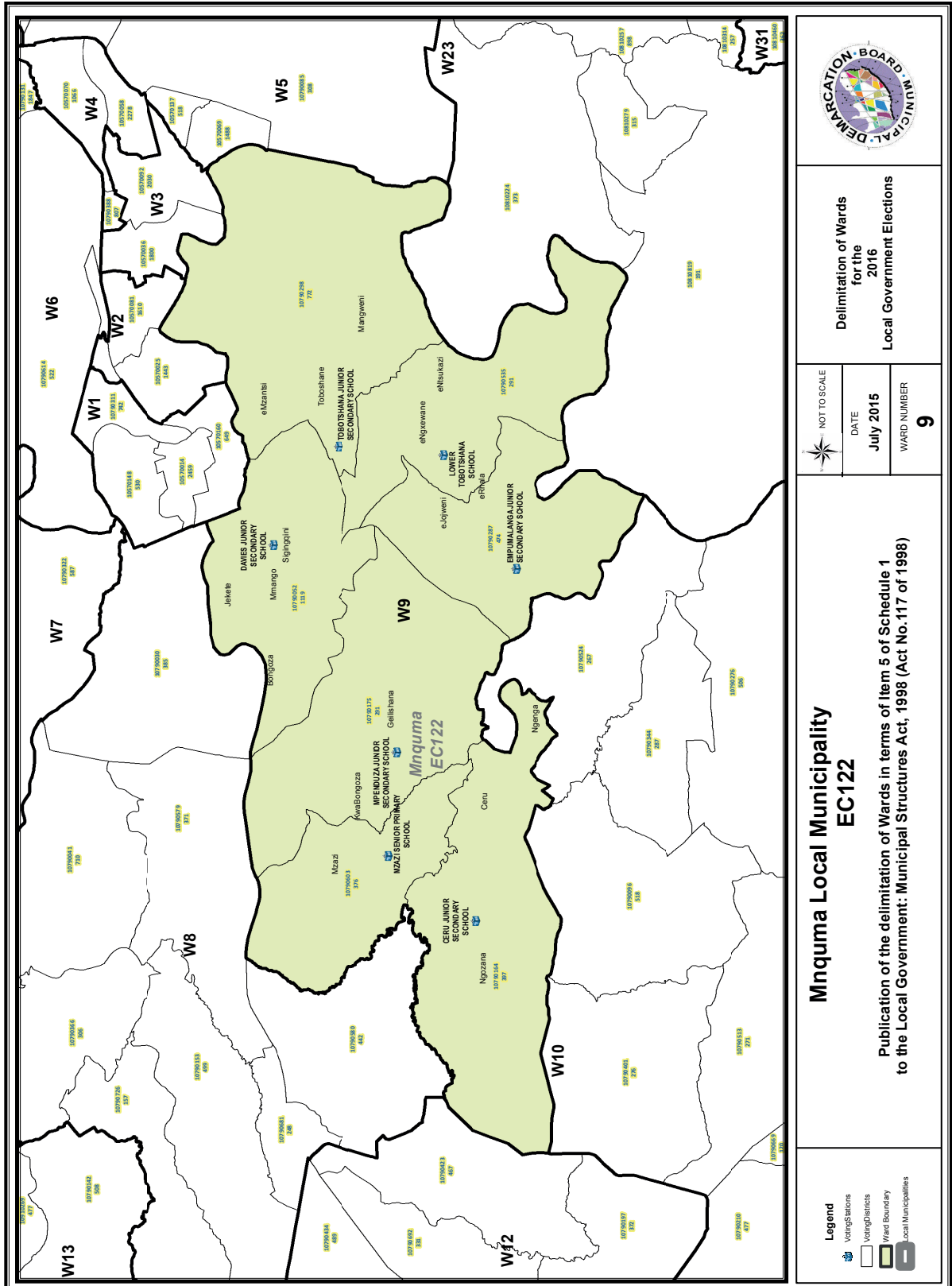
**Mngquma Local Municipality
EC122**

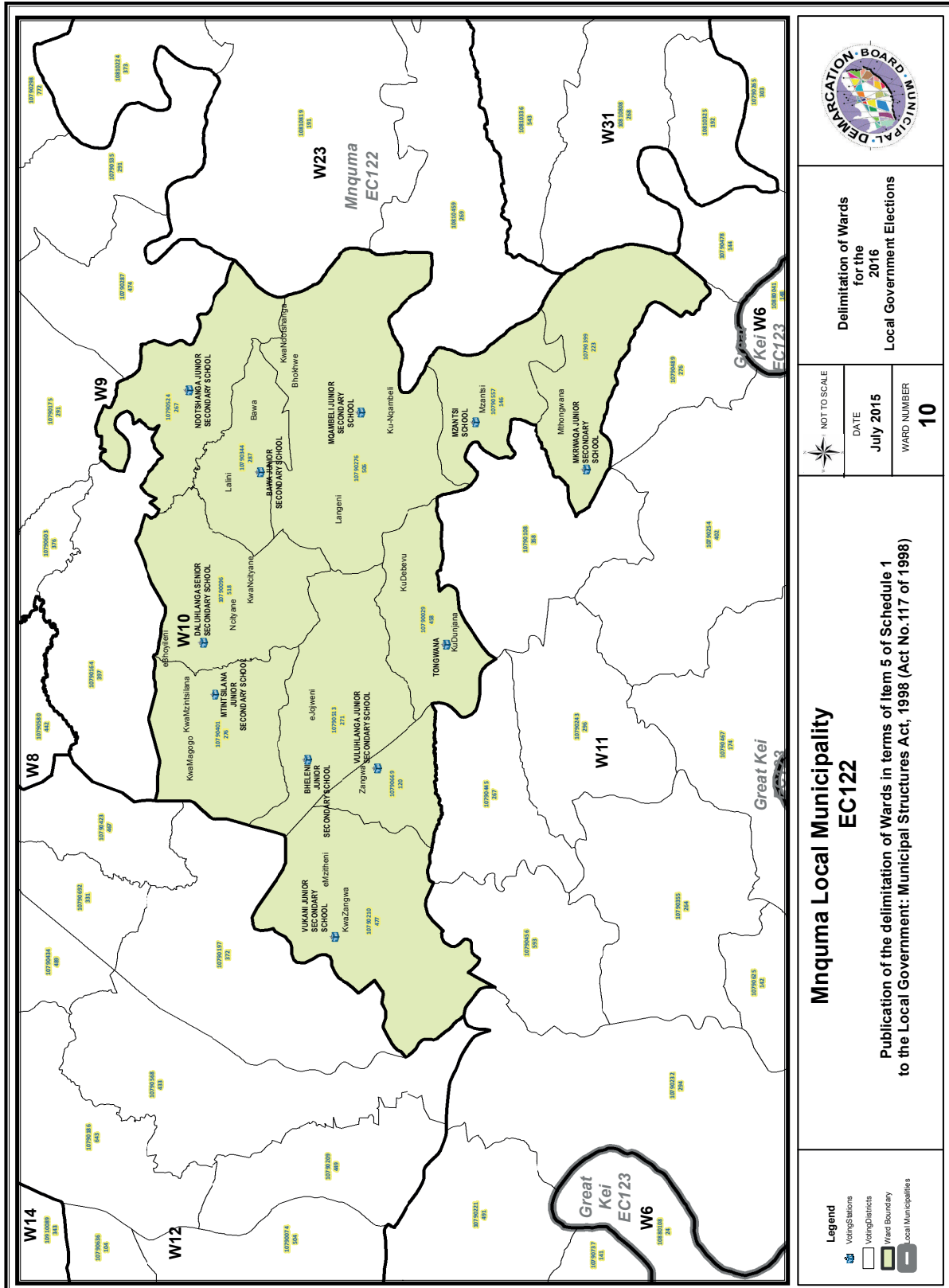
Publication of the delimitation of Wards in terms of Item 5 of Schedule 1
to the Local Government: Municipal Structures Act, 1998 (Act No.117 of 1998)

- Voting Stations
- Voting Districts
- Ward Boundary
- Local Municipalities









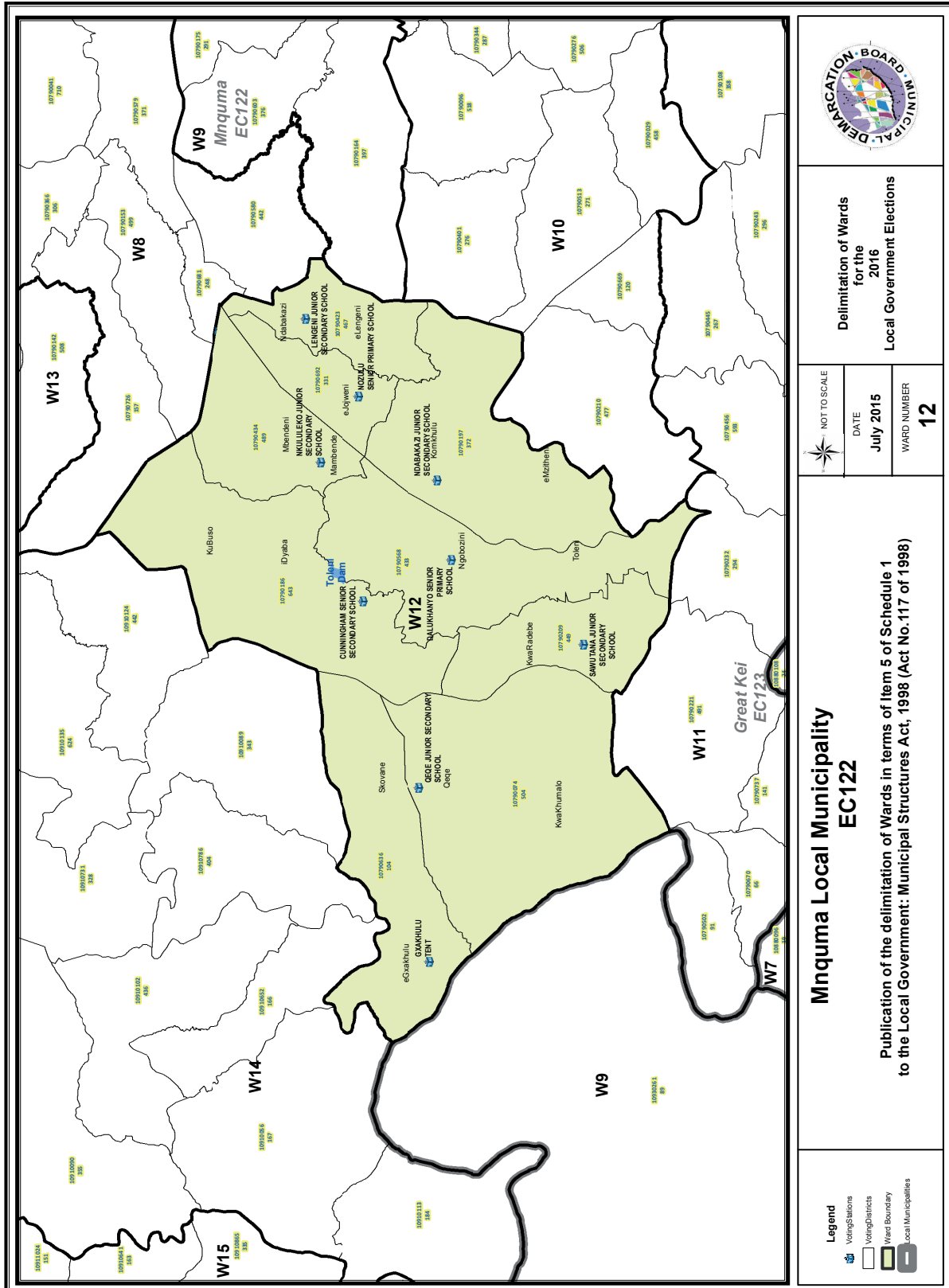
Delimitation of Wards for the 2016 Local Government Elections

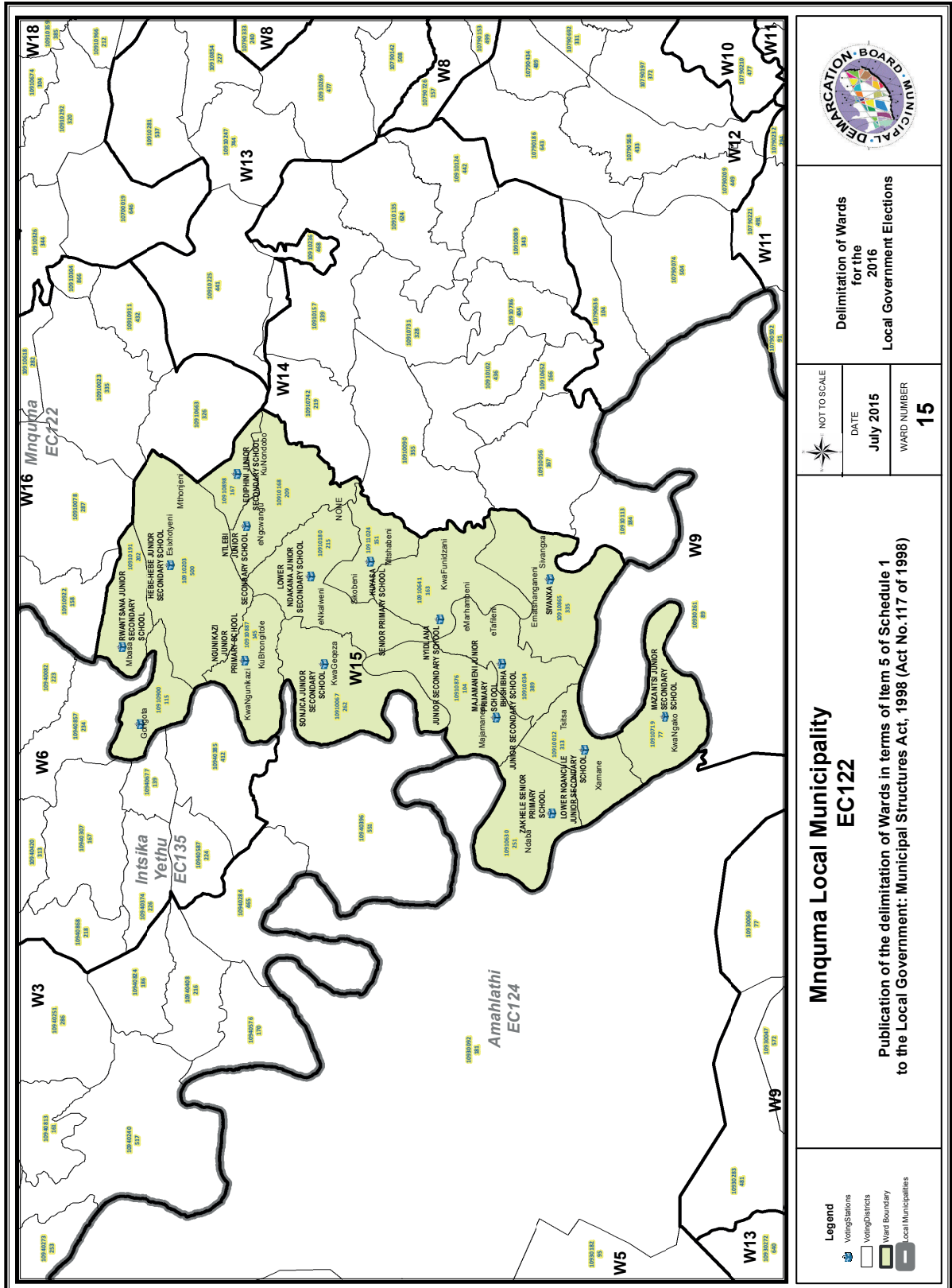
NOT TO SCALE
 DATE: July 2015
 WARD NUMBER: 10

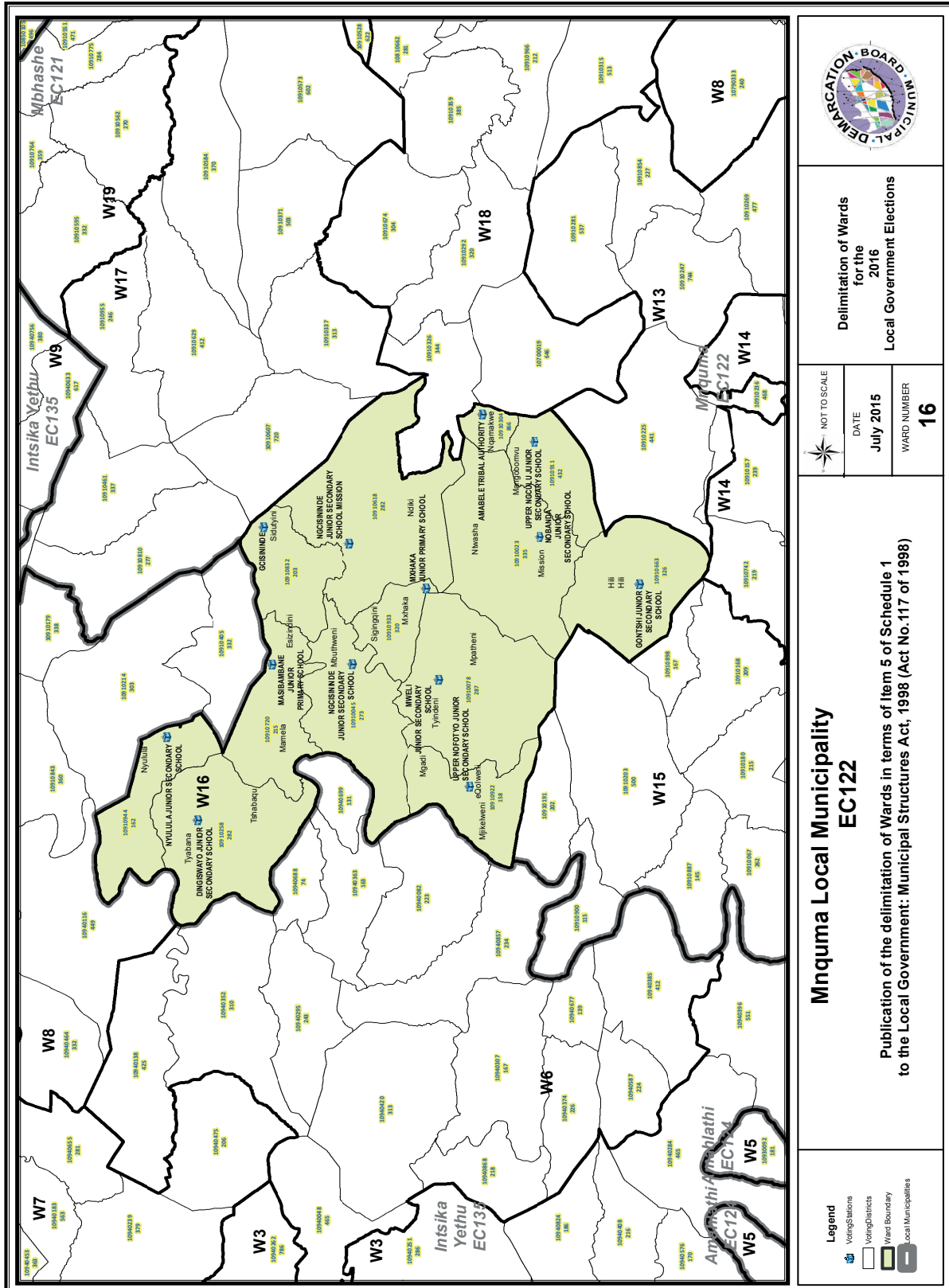
Mquma Local Municipality EC122

Publication of the delimitation of Wards in terms of Item 5 of Schedule 1 to the Local Government: Municipal Structures Act, 1998 (Act No.117 of 1998)

- Legend**
- Voting Stations
 - Voting Districts
 - Ward Boundary
 - Local Municipalities







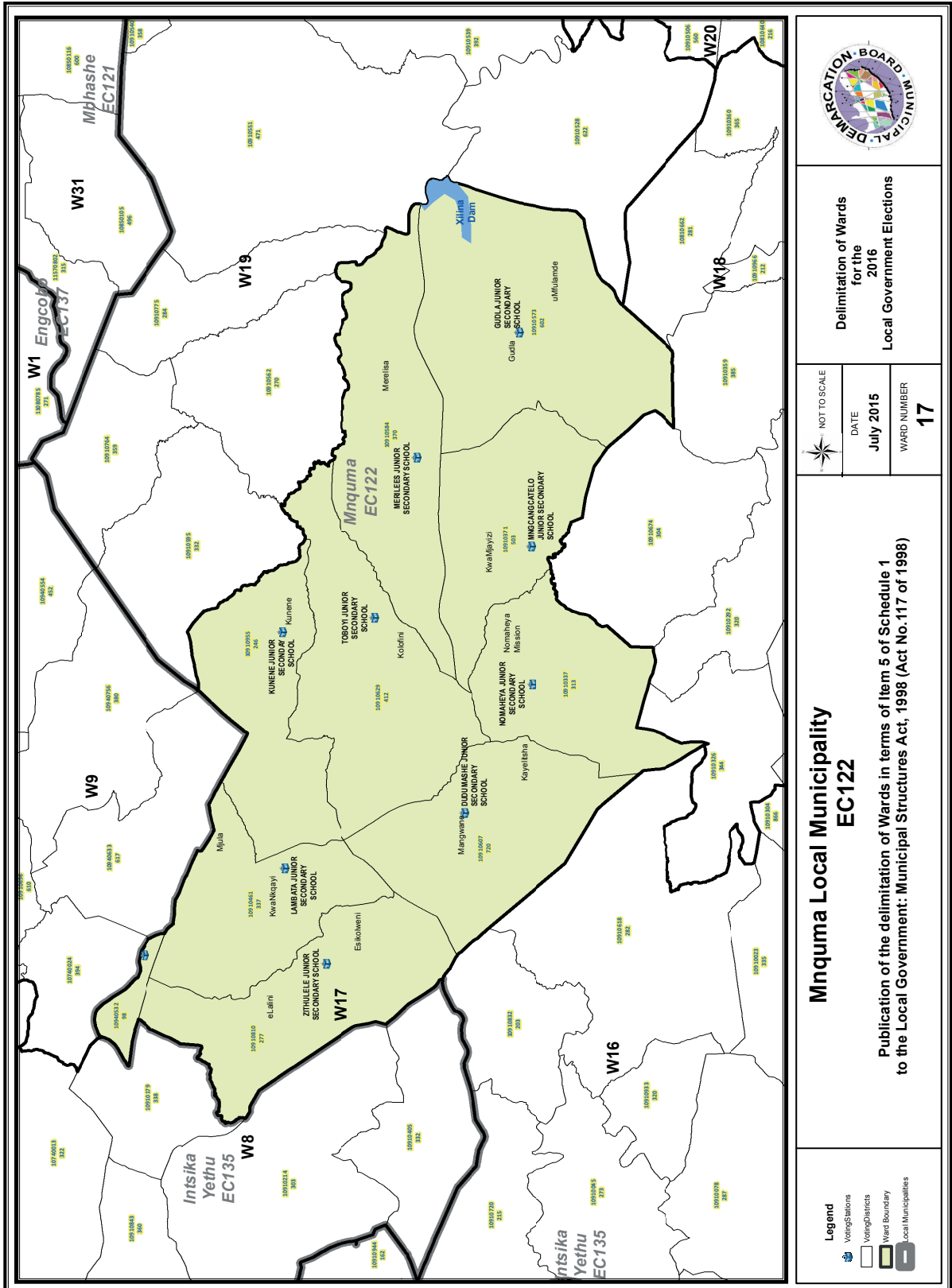
**Delimitation of Wards
for the
2016
Local Government Elections**

NOT TO SCALE
DATE
July 2015
WARD NUMBER
16

**Mngquma Local Municipality
EC122**

**Publication of the delimitation of Wards in terms of Item 5 of Schedule 1
to the Local Government: Municipal Structures Act, 1998 (Act No.117 of 1998)**

- Legend**
- Voting Stations
 - Voting Districts
 - Ward Boundary
 - Local Municipalities



Legend

- Voting Stations
- Voting Districts
- Ward Boundary
- Local Municipalities

Mngquma Local Municipality
EC122

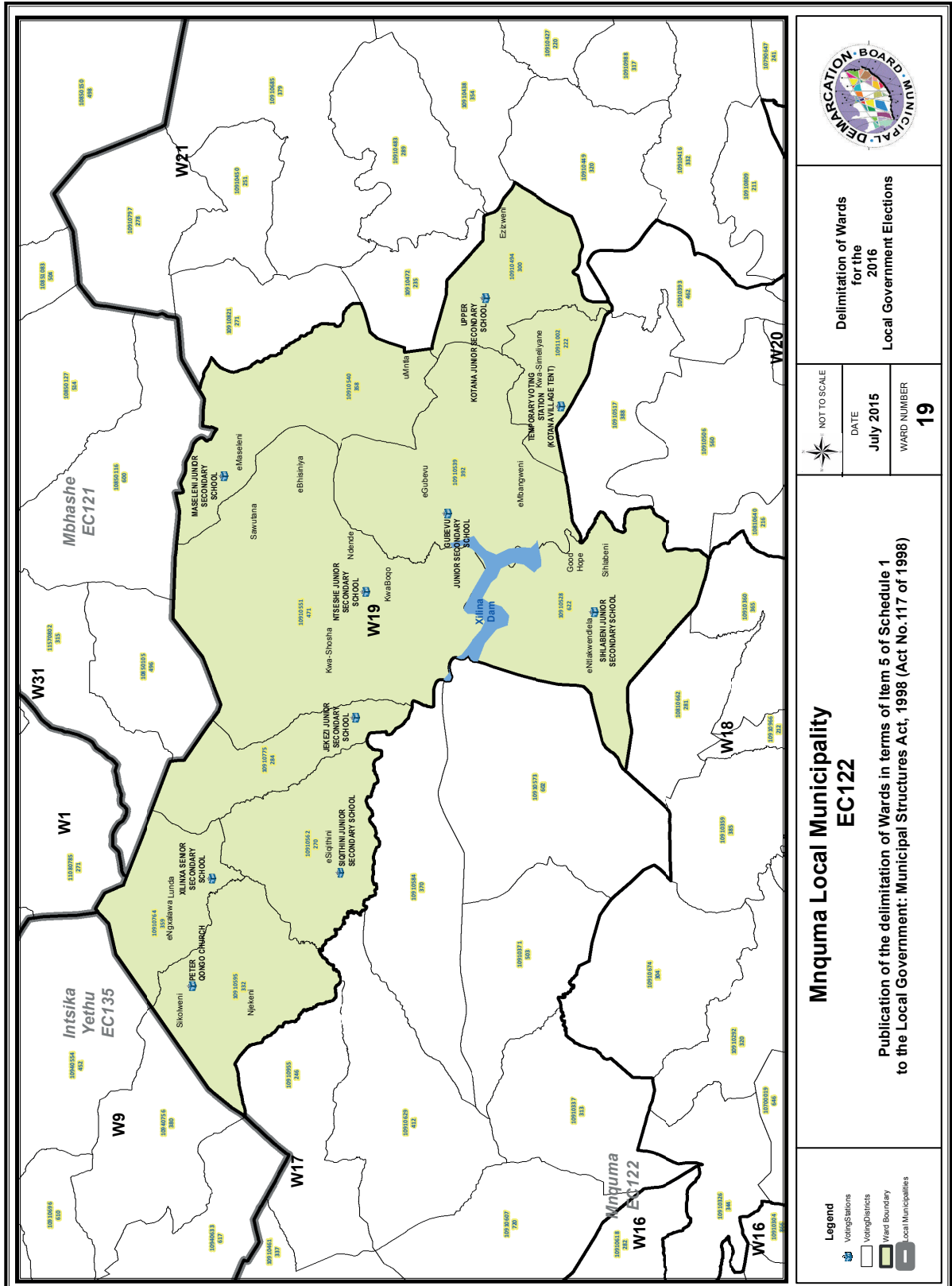
Publication of the delimitation of Wards in terms of Item 5 of Schedule 1 to the Local Government: Municipal Structures Act, 1998 (Act No.117 of 1998)

Delimitation of Wards for the 2016 Local Government Elections

NOT TO SCALE

DATE
July 2015

WARD NUMBER
17



Legend

- Voting Stations
- Voting Districts
- Ward Boundary
- Local Municipalities

NOT TO SCALE

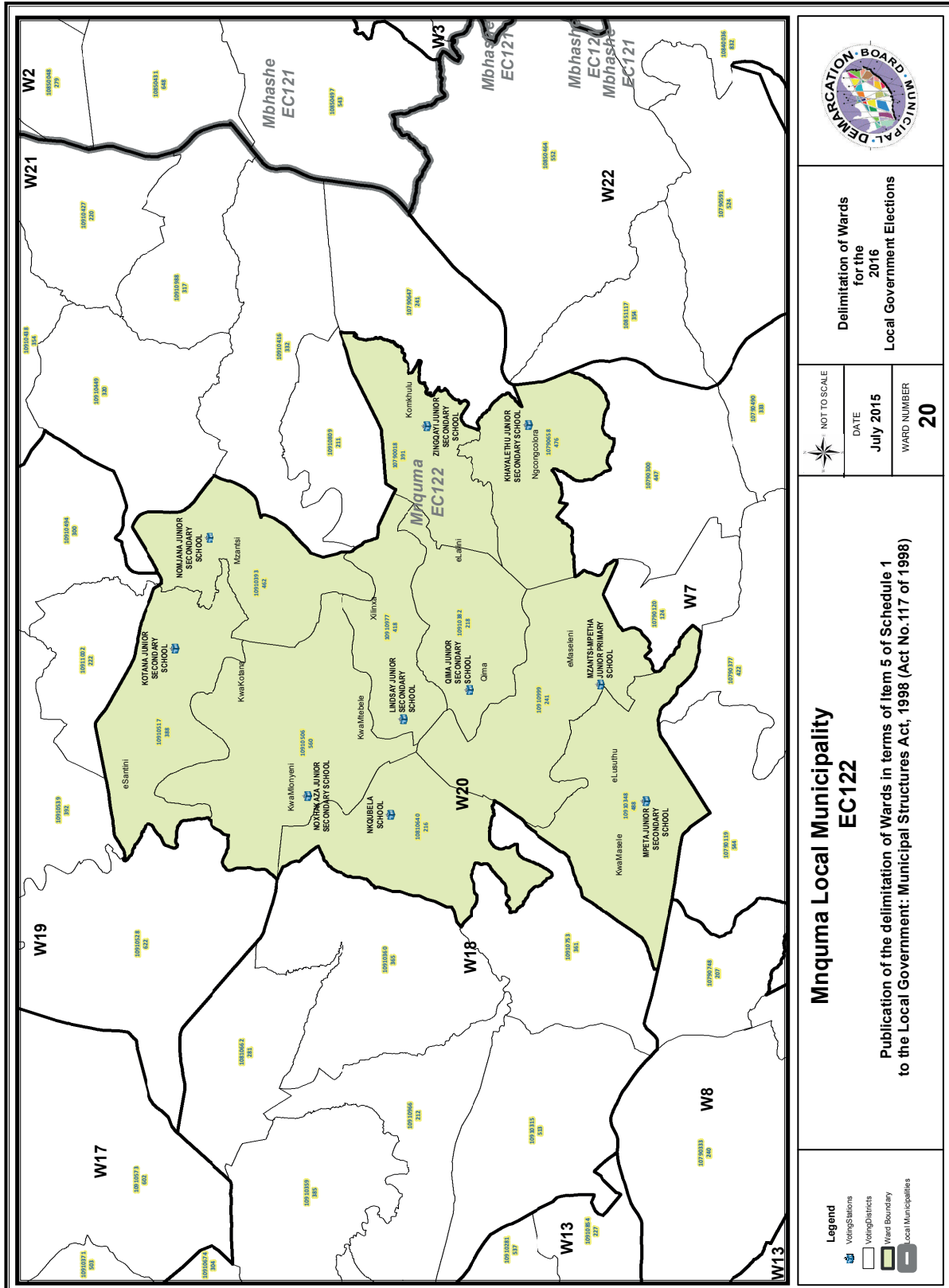
DATE
July 2015

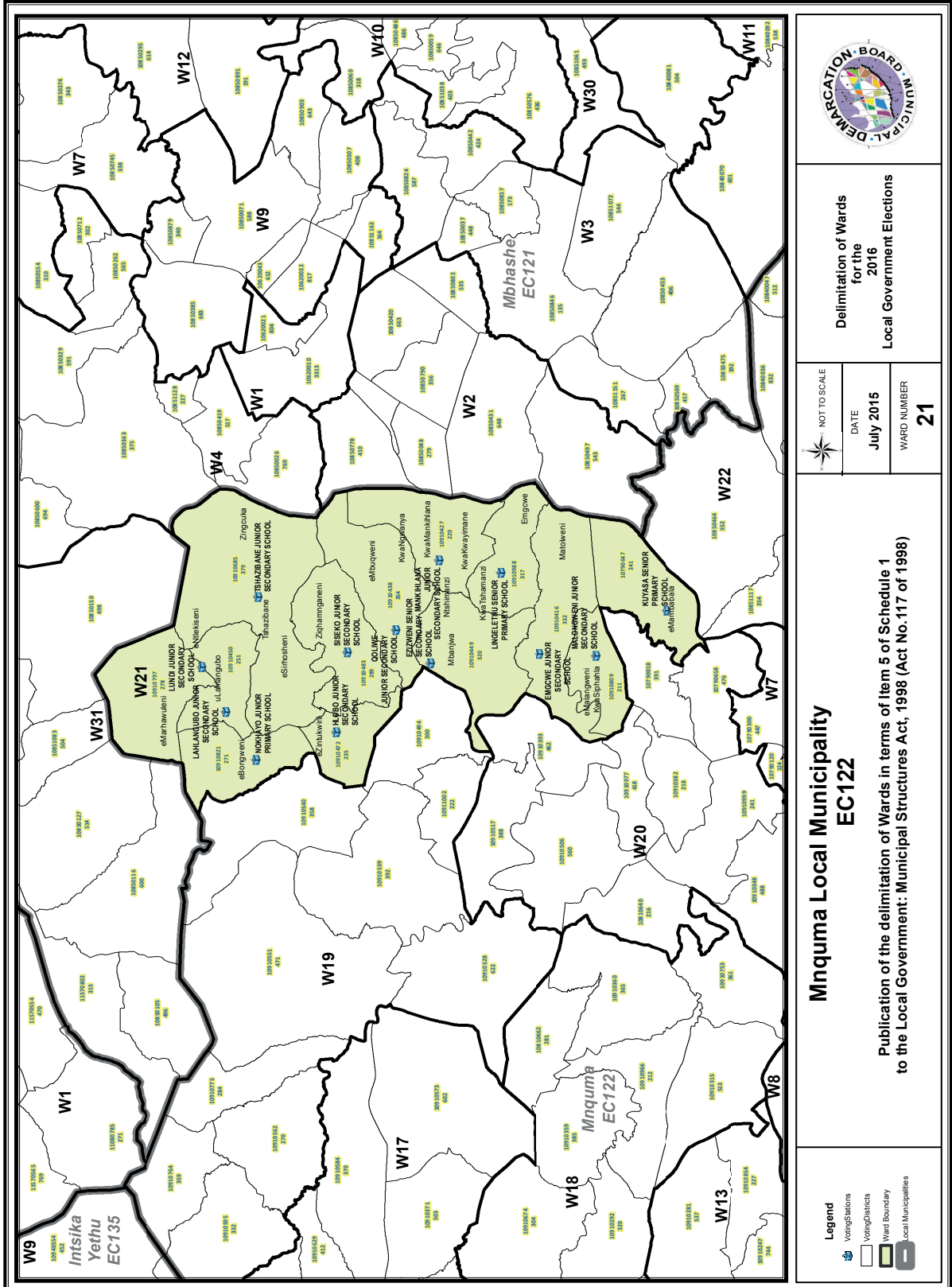
WARD NUMBER
19

**Demarcation of Wards
for the
2016
Local Government Elections**

**Mngquma Local Municipality
EC122**

**Publication of the delimitation of Wards in terms of Item 5 of Schedule 1
to the Local Government: Municipal Structures Act, 1998 (Act No.117 of 1998)**





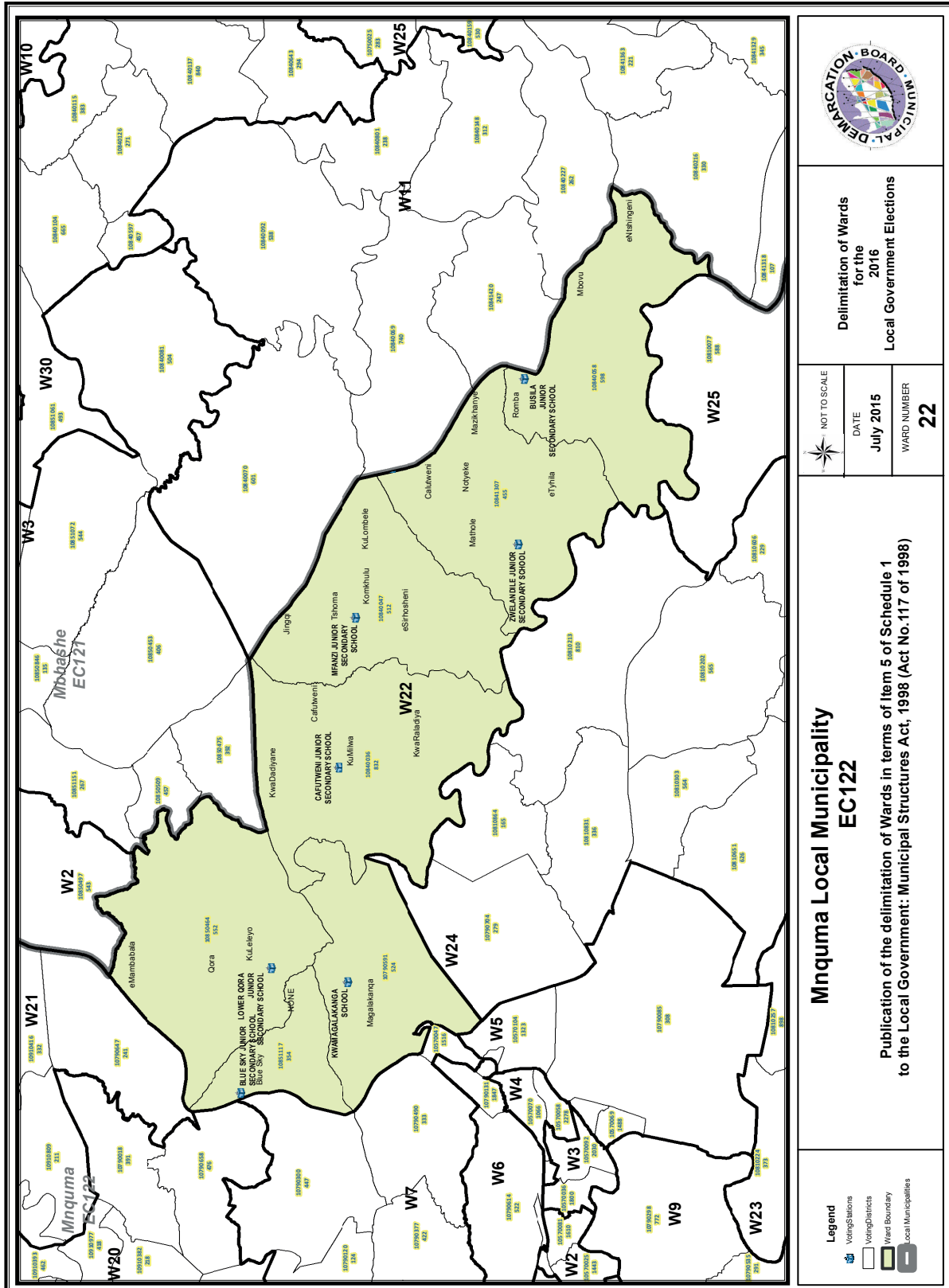
Delimitation of Wards
for the
2016
Local Government Elections

NOT TO SCALE
DATE
July 2015
WARD NUMBER
21

**Mngquma Local Municipality
EC122**

Publication of the delimitation of Wards in terms of Item 5 of Schedule 1
to the Local Government: Municipal Structures Act, 1998 (Act No.117 of 1998)

- Legend**
- Voting Stations
 - Voting Districts
 - Ward Boundary
 - Local Municipalities



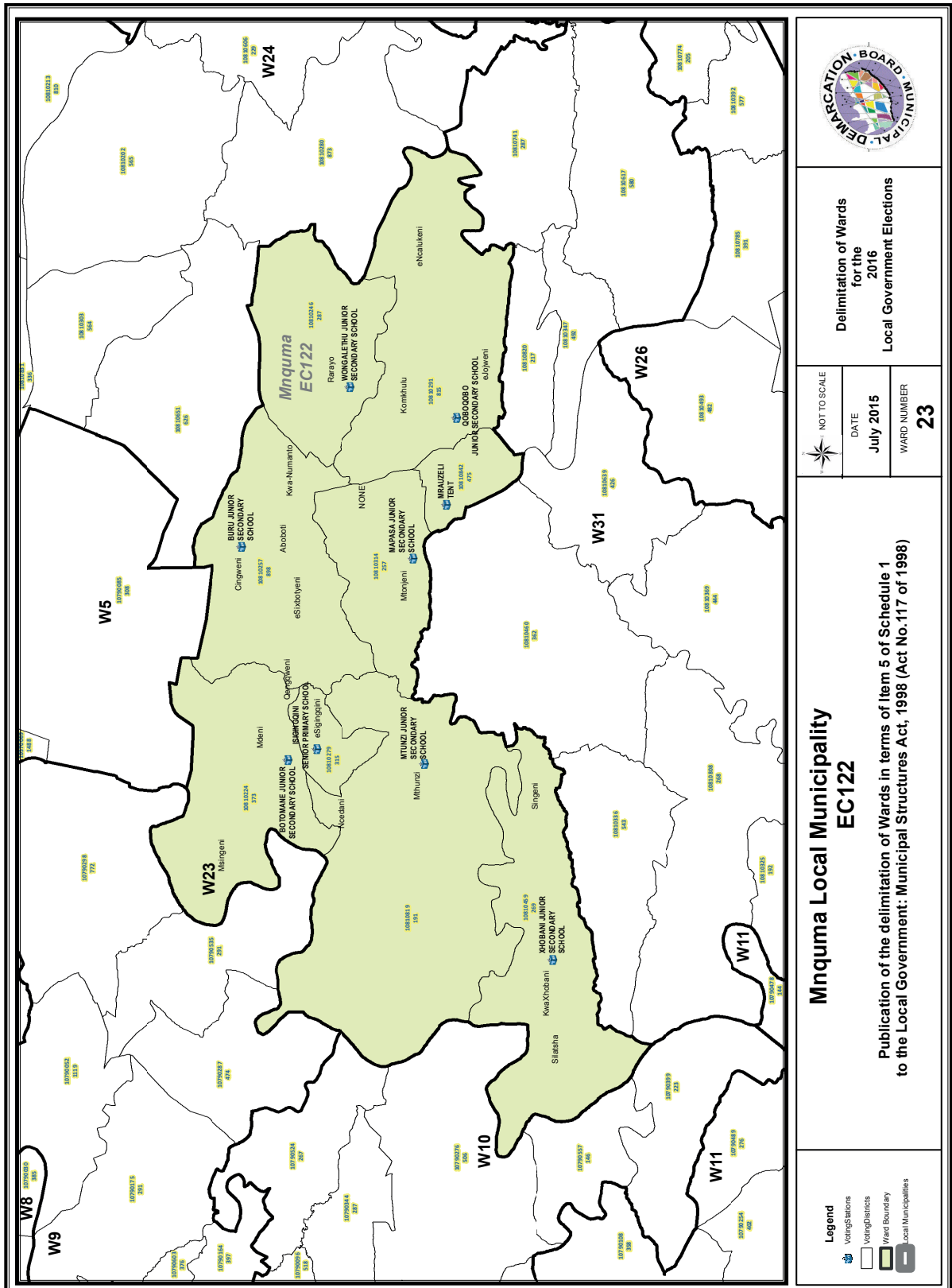
Delimitation of Wards
for the
2016
Local Government Elections

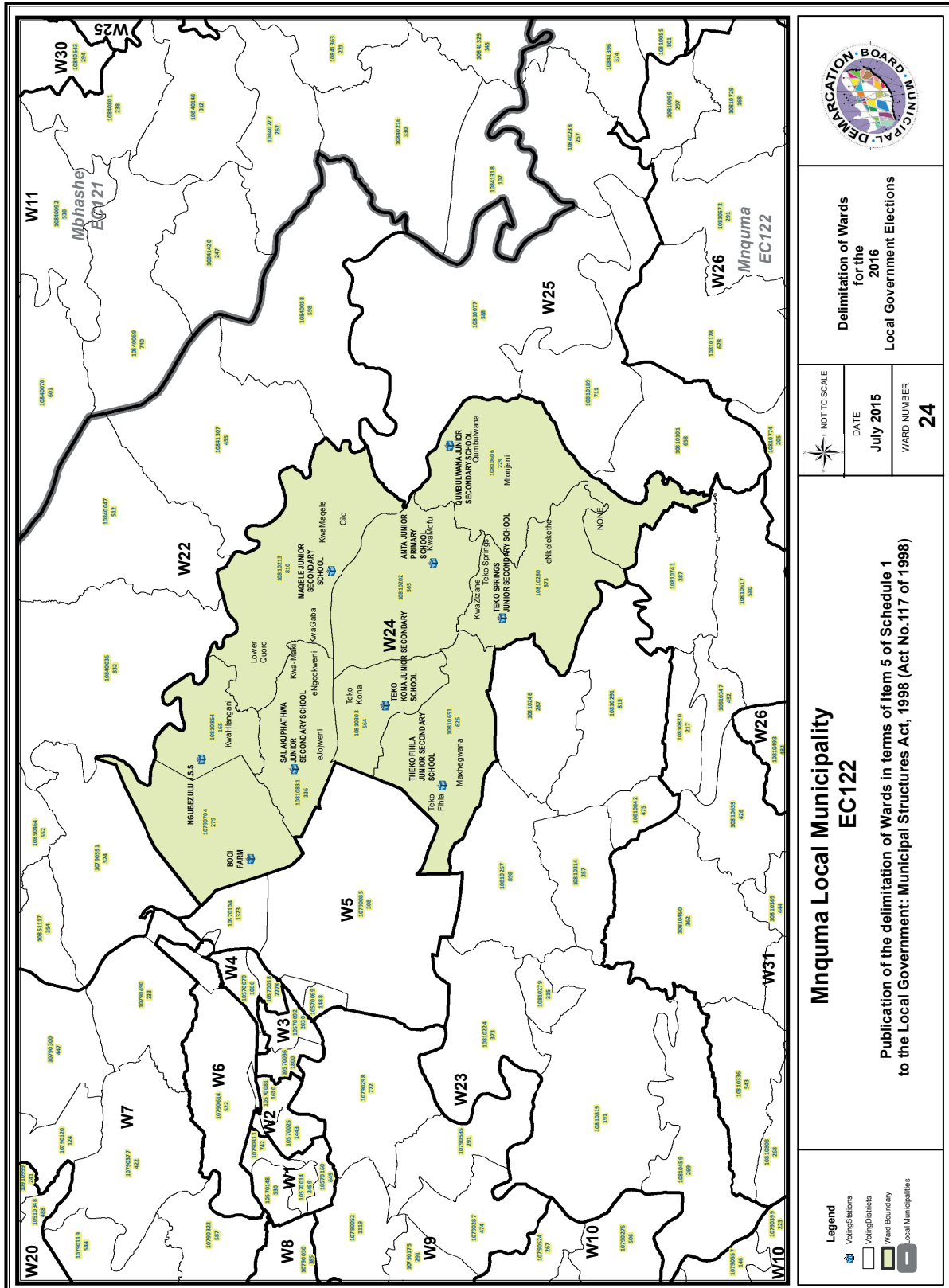
NOT TO SCALE
DATE
July 2015
WARD NUMBER
22

**Mquma Local Municipality
EC122**

Publication of the delimitation of Wards in terms of Item 5 of Schedule 1
to the Local Government: Municipal Structures Act, 1998 (Act No.117 of 1998)

- Legend**
- Voting Stations
 - Voting Districts
 - Ward Boundary
 - Local Municipalities





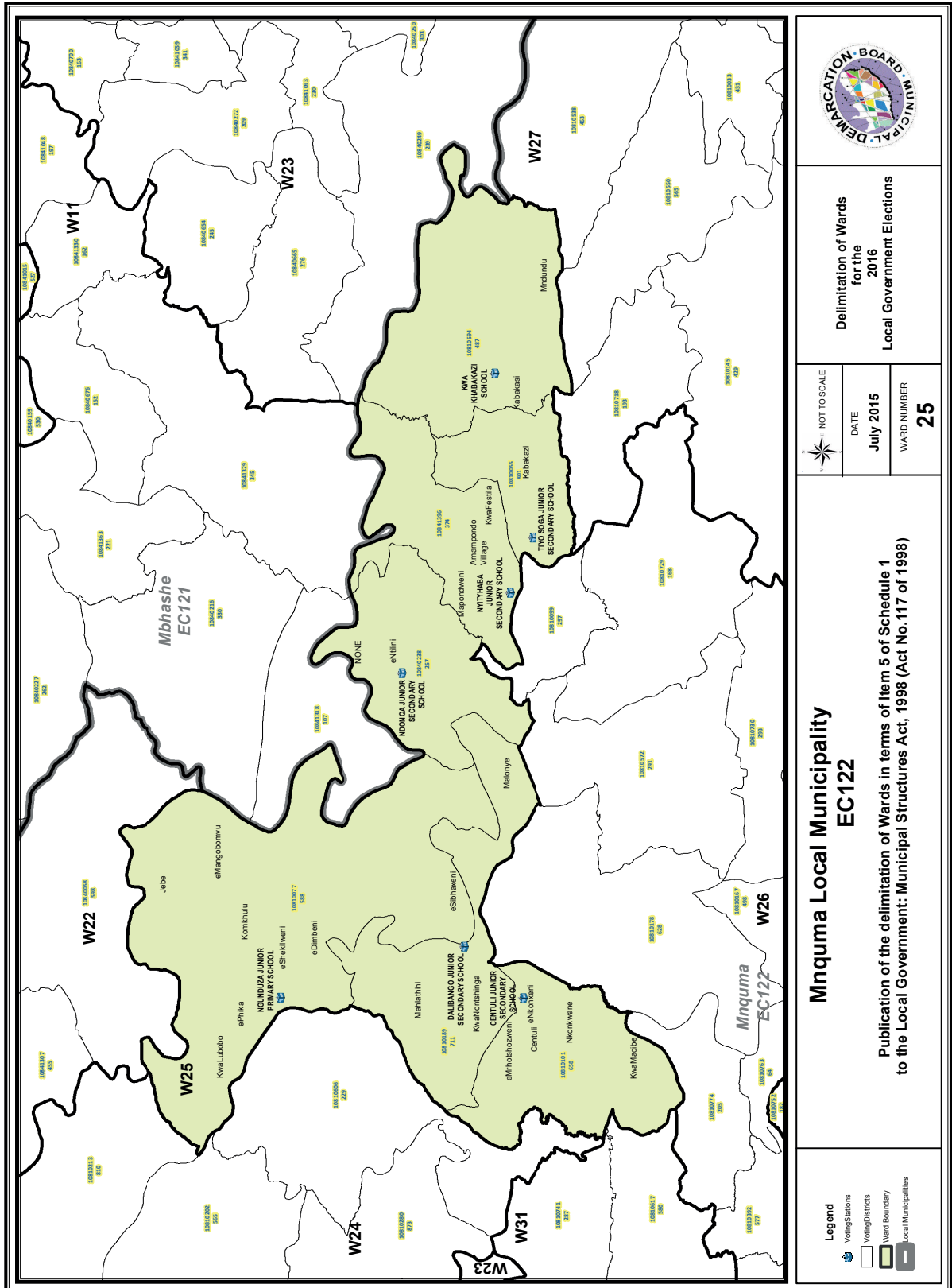
Delimitation of Wards for the 2016 Local Government Elections

NOT TO SCALE
 DATE: July 2015
 WARD NUMBER: 24

Mquma Local Municipality EC122

Publication of the delimitation of Wards in terms of Item 5 of Schedule 1 to the Local Government: Municipal Structures Act, 1998 (Act No.117 of 1998)

- Legend**
- Voting Stations
 - Voting Districts
 - Ward Boundary
 - Local Municipalities



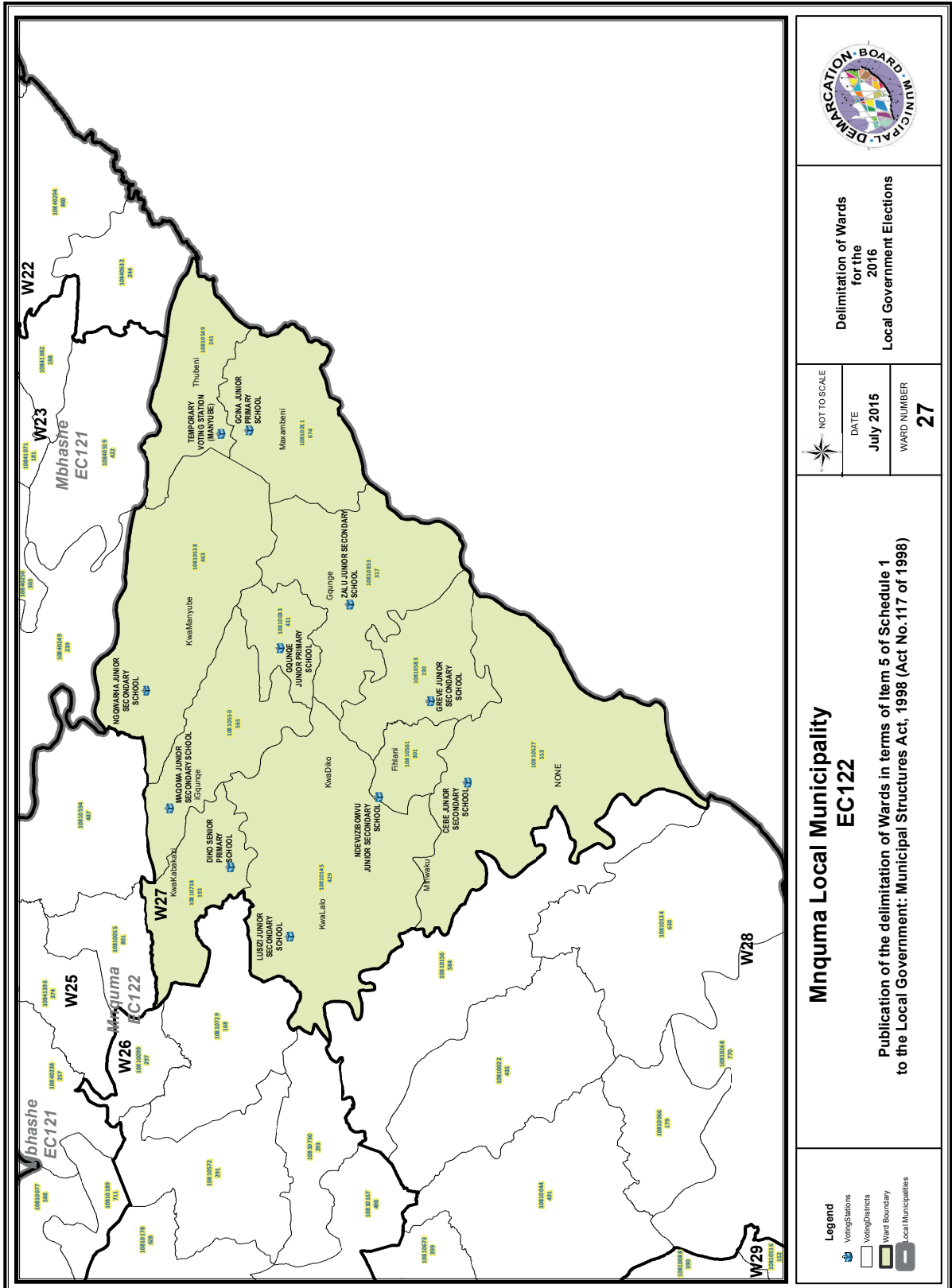
Delimitation of Wards
for the
2016
Local Government Elections

NOT TO SCALE
DATE
July 2015
WARD NUMBER
25

**Mngquma Local Municipality
EC122**

Publication of the delimitation of Wards in terms of Item 5 of Schedule 1
to the Local Government: Municipal Structures Act, 1998 (Act No.117 of 1998)

- Legend**
- Voting Stations
 - Voting Districts
 - Ward Boundary
 - Local Municipalities



Legend

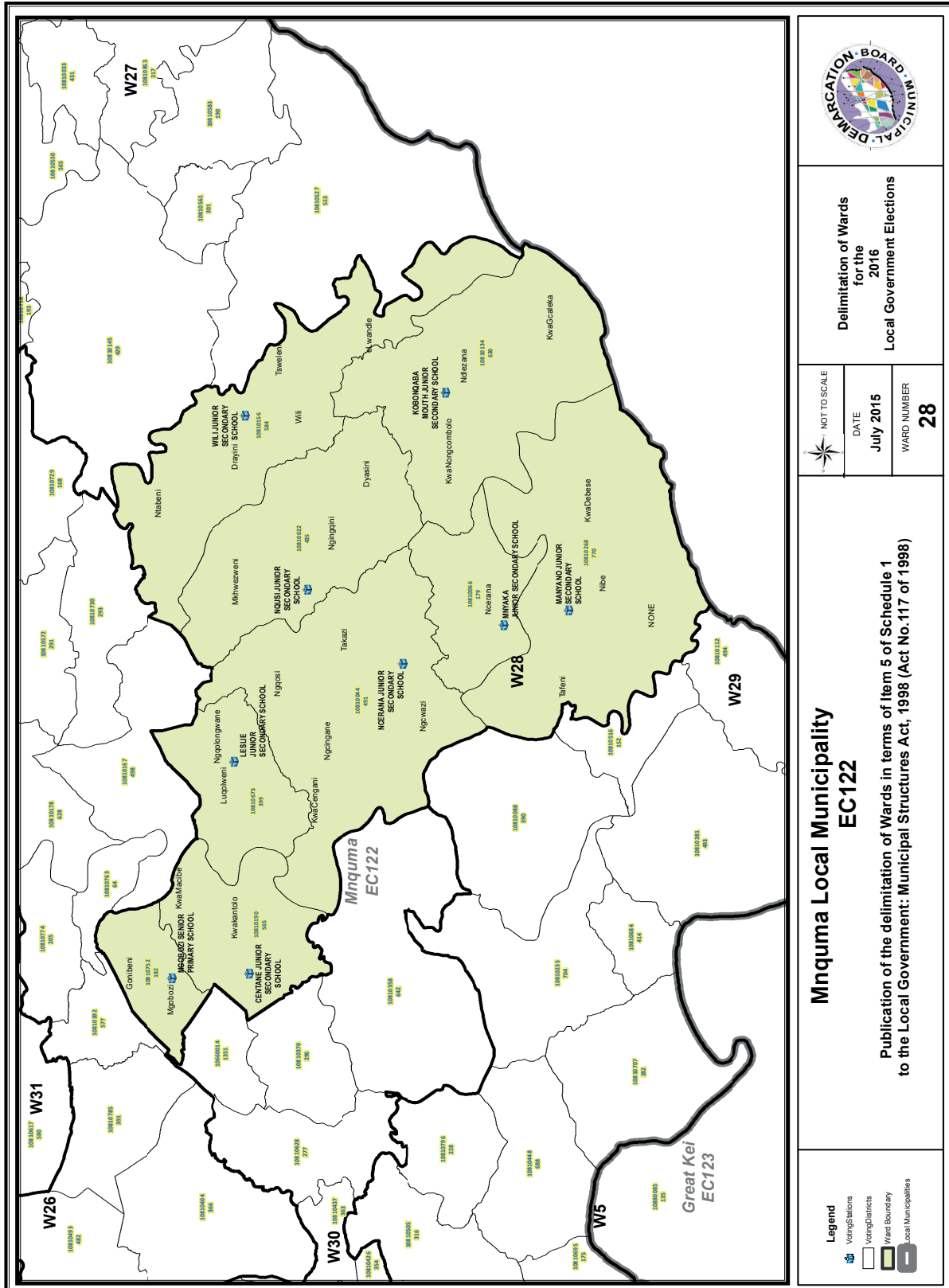
- Voting Stations
- Voting Districts
- Ward Boundary
- Local Municipalities

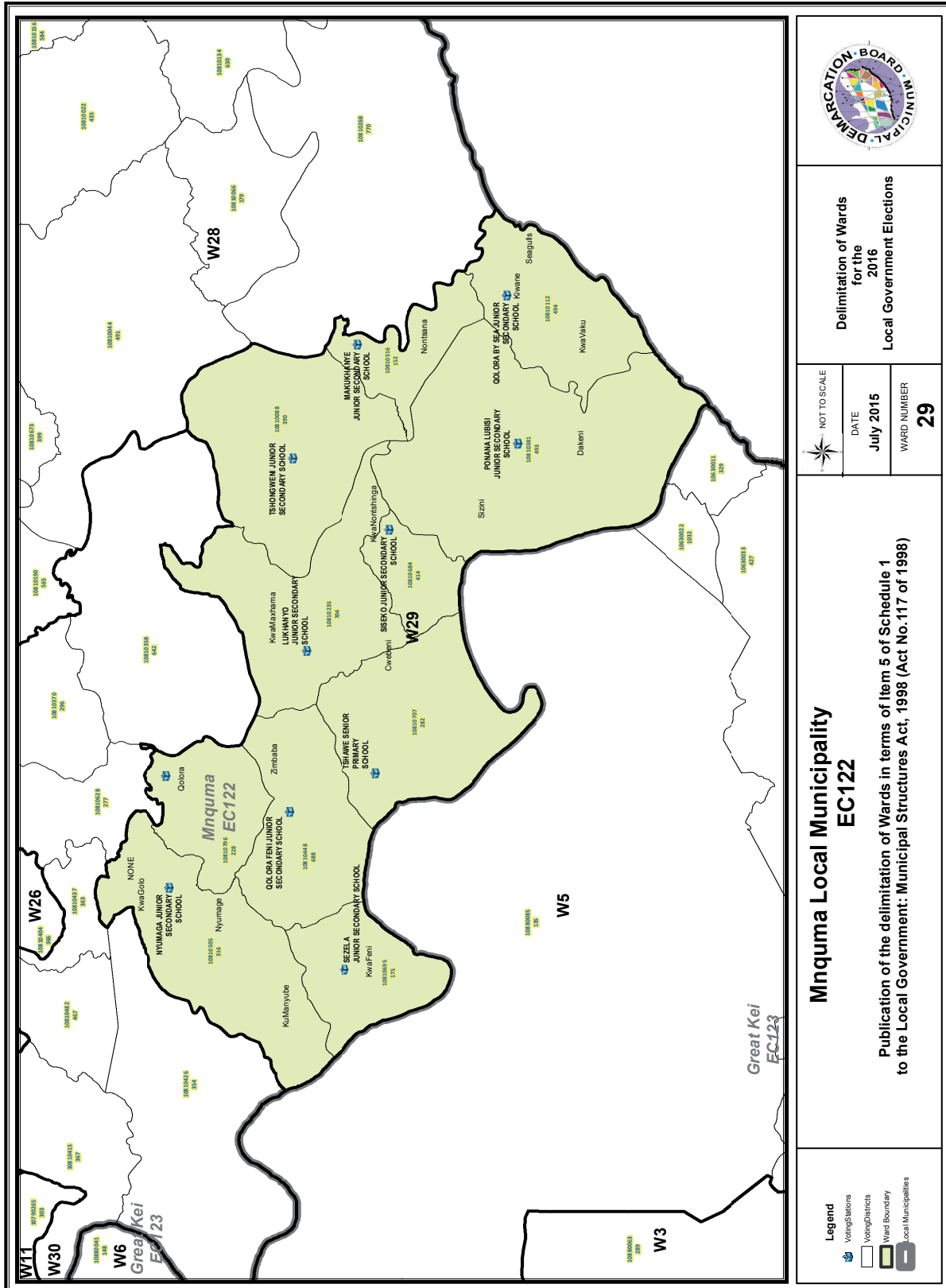
Mngquma Local Municipality
EC122

Publication of the delimitation of Wards in terms of Item 5 of Schedule 1 to the Local Government: Municipal Structures Act, 1998 (Act No. 117 of 1998)

Delimitation of Wards for the 2016 Local Government Elections

NOT TO SCALE
DATE July 2015
WARD NUMBER 27





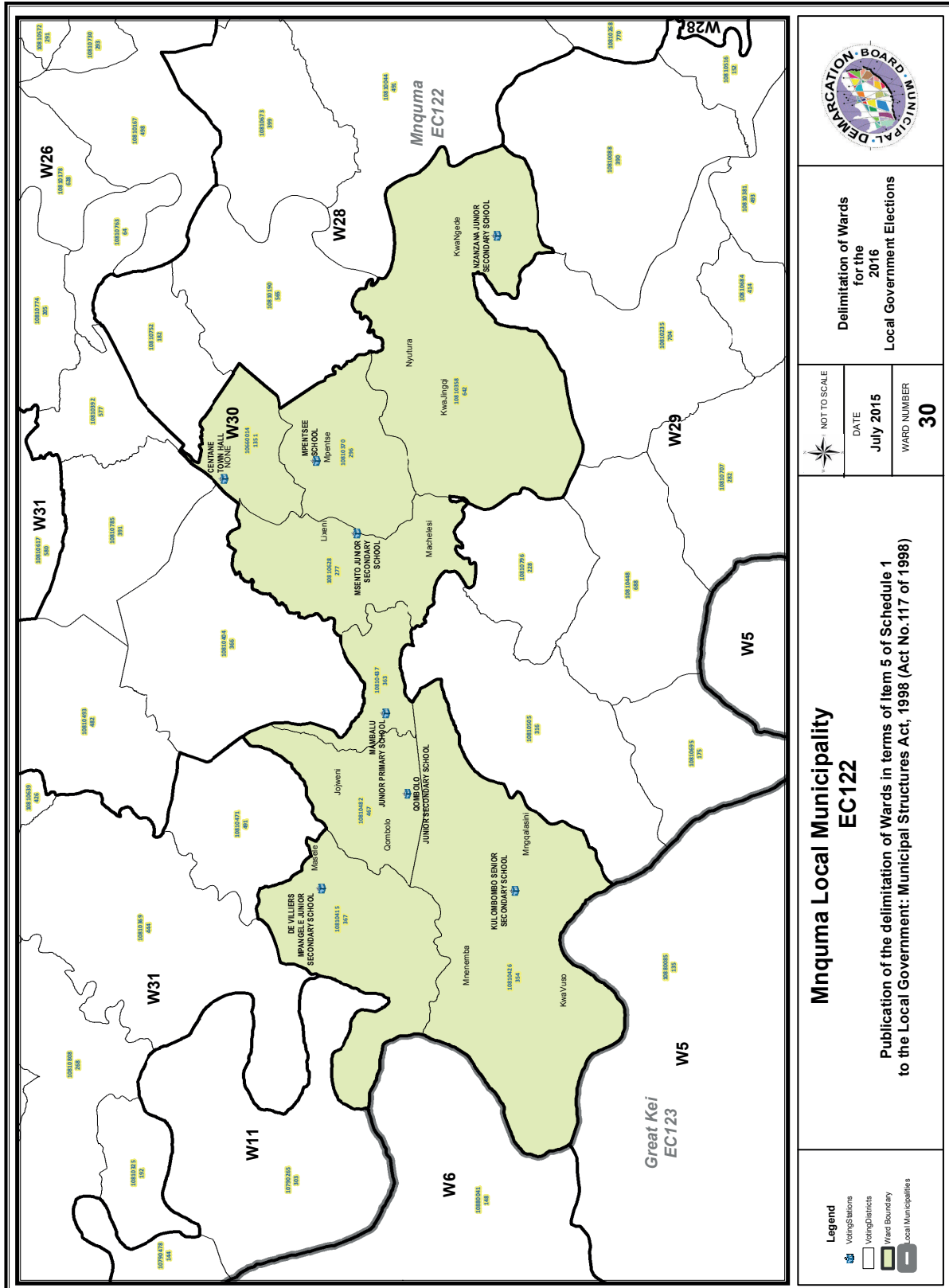
Delimitation of Wards
for the
2016
Local Government Elections

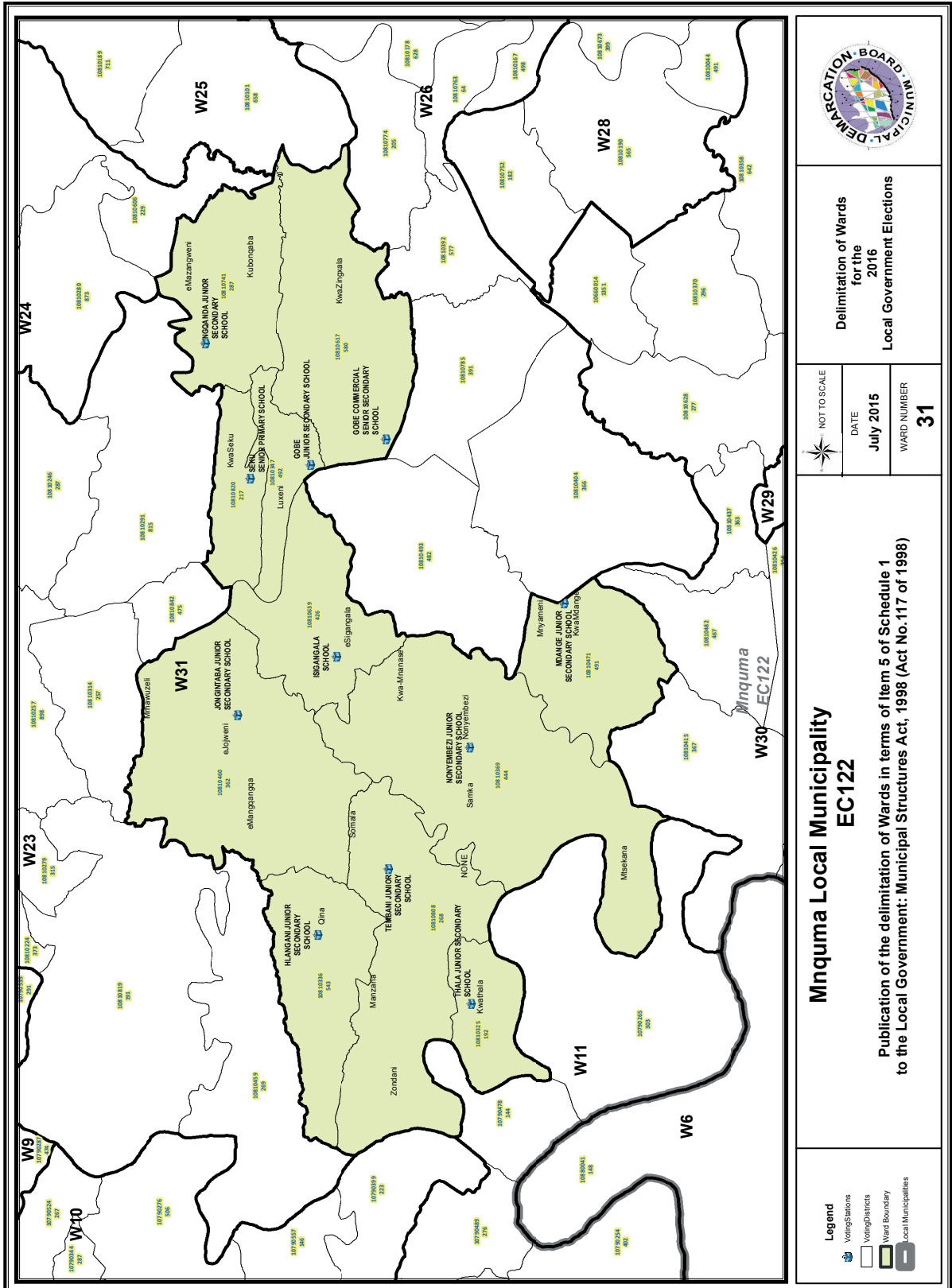
NOT TO SCALE
DATE July 2015
WARD NUMBER 29

**Mngquma Local Municipality
EC122**

Publication of the delimitation of Wards in terms of Item 5 of Schedule 1
to the Local Government: Municipal Structures Act, 1998 (Act No.117 of 1998)

- Legend**
- Voting Stations
 - Voting Districts
 - Ward Boundary
 - Local Municipalities





FORM/VORM MDB5

WARD DELIMITATION/

WYKSAFBAKENING

**OBJECTION IN TERMS OF ITEM 5(2) OF SCHEDULE 1 TO THE LOCAL GOVERNMENT:
MUNICIPAL STRUCTURES ACT, 1998**

**BESWAAR INGEVOLGE ITEM 5(2) VAN BYLAE 1 VAN DIE WET OP PLAASLIKE REGERING:
MUNISIPALE STRUKTURE, 1998**

Name of municipality/ Naam van Munisipaliteit :.....

Code/Kode :.....

**Name of aggrieved person/institution/Naam van beswaarde persoon/instelling :
.....**

**Contact person in case of an institution/ Kontak persoon in geval van 'n instelling:
.....**

Address/Adres:.....

Tel. number/ Tel. nommer:.....Cell number/ Selfoonnommer:

Email address:.....

PLEASE USE ADDITIONAL PAGE SHOULD THE ALTERNATIVE PROPOSALS BE MORE THAN THE FOLLOWING SPACE AVAILABLE.

I request the Municipal Demarcation Board to consider the following alternative proposals/ Ek versoek die Munisipale Afbakeningsraad om die volgende alternatiewe voorstelle te oorweeg:

Ward number/ Wyk nommer	The ward should comprise of the following voting districts (Provide voting district number and the number of voters in brackets e.g. VD1123456(1500)+VD345678(2500)=4000)/ Die wyk moet bestaan uit die volgende stemdistrikte: (Voorsien die stemdistriknommer en die getal geregistreerde kiesers as volg VD1123456(1500)+VD345678(2500)=4000)	Motivation /Motivering

I confirm that/ Ek bevestig dat:

- each cluster of voting districts form a contiguous ward/ die saamgevoegde stemdistrikte vorm 'n aaneenlopende wyk;
- the number of voters in each ward fall within the minimum and maximum of voters allowed per ward/ die getal kiesers in elke wyk is binne die minimum en maksimum getal wat per wyk toegelaat word;
- the proposed ward boundaries comply, in general, with the criteria/ die voorgestelde wyke voldoen in die algemeen aan die kriteria.

SIGNATURE

NAME AND SURNAME

DATE

IMPORTANT

Information

from Government Printing Works

Dear Valued Customers,

Government Printing Works has implemented rules for completing and submitting the electronic Adobe Forms when you, the customer, submits your notice request.

Please take note of these guidelines when completing your form.

GPW Business Rules

1. No hand written notices will be accepted for processing, this includes Adobe forms which have been completed by hand.
2. Notices can only be submitted in Adobe electronic form format to the email submission address submit.egazette@gpw.gov.za. This means that any notice submissions not on an Adobe electronic form that are submitted to this mailbox will be **rejected**. National or Provincial gazette notices, where the Z95 or Z95Prov must be an Adobe form but the notice content (body) will be an attachment.
3. Notices brought into GPW by "walk-in" customers on electronic media can only be submitted in Adobe electronic form format. This means that any notice submissions not on an Adobe electronic form that are submitted by the customer on electronic media will be **rejected**. National or Provincial gazette notices, where the Z95 or Z95Prov must be an Adobe form but the notice content (body) will be an attachment.
4. All customers who walk in to GPW that wish to submit a notice that is not on an electronic Adobe form will be routed to the Contact Centre where the customer will be taken through the completion of the form by a GPW representative. Where a customer walks into GPW with a stack of hard copy notices delivered by a messenger on behalf of a newspaper the messenger must be referred back to the sender as the submission does not adhere to the submission rules.
5. All notice submissions that do not comply with point 2 will be charged full price for the notice submission.
6. The current cut-off of all Gazette's remains unchanged for all channels. (Refer to the GPW website for submission deadlines – www.gpwonline.co.za)
7. Incorrectly completed forms and notices submitted in the wrong format will be rejected to the customer to be corrected and resubmitted. Assistance will be available through the Contact Centre should help be required when completing the forms. (012-748 6200 or email info.egazette@gpw.gov.za)
8. All re-submissions by customers will be subject to the above cut-off times.
9. All submissions and re-submissions that miss the cut-off will be rejected to the customer to be submitted with a new publication date.
10. Information on forms will be taken as the primary source of the notice to be published. Any instructions that are on the email body or covering letter that contradicts the notice form content will be ignored.

You are therefore advised that effective from **Monday, 18 May 2015** should you not comply with our new rules of engagement, all notice requests will be rejected by our new system.

Furthermore, the fax number **012- 748 6030** will also be **discontinued** from this date and customers will only be able to submit notice requests through the email address submit.egazette@gpw.gov.za.



Printed by and obtainable from the Government Printer, Bosman Street, Private Bag X85, Pretoria, 0001.
 Contact Centre Tel: 012-748 6200. eMail: info.egazette@gpw.gov.za
 Also available at the Legal Advisory Services, **Province of the Eastern Cape**, Private Bag X0047, Bisho, 5605.
 Tel. (040) 635-0052.