



PROVINCE OF THE EASTERN CAPE
IPHONDO LEMPUMA KOLONI
PROVINSIE OOS-KAAP

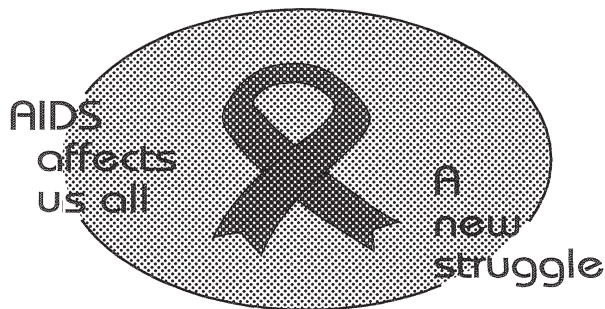
**Provincial Gazette
Igazethi Yephondo
Provinsiale Koerant
(Extraordinary)**

Vol. 22

BISHO/
KING WILLIAM'S TOWN, 22 JULY 2015

No. 3439

We all have the power to prevent AIDS



**AIDS
HELPLINE**

0800 012 322

DEPARTMENT OF HEALTH

Prevention is the cure

N.B. The Government Printing Works will not be held responsible for the quality of "Hard Copies" or "Electronic Files" submitted for publication purposes

ISSN 1682-4556



9 771682 455006

03439



IMPORTANT

Information

from Government Printing Works

Dear Valued Customers,

Government Printing Works has implemented rules for completing and submitting the electronic Adobe Forms when you, the customer, submits your notice request.

Please take note of these guidelines when completing your form.



GPW Business Rules

1. No hand written notices will be accepted for processing, this includes Adobe forms which have been completed by hand.
2. Notices can only be submitted in Adobe electronic form format to the email submission address submit.egazette@gpw.gov.za. This means that any notice submissions not on an Adobe electronic form that are submitted to this mailbox will be **rejected**. National or Provincial gazette notices, where the Z95 or Z95Prov must be an Adobe form but the notice content (body) will be an attachment.
3. Notices brought into GPW by "walk-in" customers on electronic media can only be submitted in Adobe electronic form format. This means that any notice submissions not on an Adobe electronic form that are submitted by the customer on electronic media will be **rejected**. National or Provincial gazette notices, where the Z95 or Z95Prov must be an Adobe form but the notice content (body) will be an attachment.
4. All customers who walk in to GPW that wish to submit a notice that is not on an electronic Adobe form will be routed to the Contact Centre where the customer will be taken through the completion of the form by a GPW representative. Where a customer walks into GPW with a stack of hard copy notices delivered by a messenger on behalf of a newspaper the messenger must be referred back to the sender as the submission does not adhere to the submission rules.
5. All notice submissions that do not comply with point 2 will be charged full price for the notice submission.
6. The current cut-off of all Gazette's remains unchanged for all channels. (Refer to the GPW website for submission deadlines – www.gpwonline.co.za)
7. Incorrectly completed forms and notices submitted in the wrong format will be rejected to the customer to be corrected and resubmitted. Assistance will be available through the Contact Centre should help be required when completing the forms. (012-748 6200 or email info.egazette@gpw.gov.za)
8. All re-submissions by customers will be subject to the above cut-off times.
9. All submissions and re-submissions that miss the cut-off will be rejected to the customer to be submitted with a new publication date.
10. Information on forms will be taken as the primary source of the notice to be published. Any instructions that are on the email body or covering letter that contradicts the notice form content will be ignored.

You are therefore advised that effective from **Monday, 18 May 2015** should you not comply with our new rules of engagement, all notice requests will be rejected by our new system.

Furthermore, the fax number **012- 748 6030** will also be **discontinued** from this date and customers will only be able to submit notice requests through the email address submit.egazette@gpw.gov.za.

DISCLAIMER:

Government Printing Works reserves the right to apply the 25% discount to all Legal and Liquor notices that comply with the business rules for notice submissions for publication in gazettes.

National, Provincial, Road Carrier Permits and Tender notices will pay the price as published in the Government Gazettes.

For any information, please contact the eGazette Contact Centre on 012-748 6200 or email info.egazette@gpw.gov.za

Table of Contents

<i>No.</i>		<i>Gazette No.</i>	<i>Page No.</i>
PROVINCIAL NOTICES • PROVINSIALE KENNISGEWINGS			
54	Local Government: Municipal Structures Act (117/1998): Municipal Demarcation Board: Delimitation of municipal wards: Senqu Local Municipality (EC142).....	3439	4
54	Wet Op Plaaslike Regering: Munisipale Strukture (117/1998): Munisipale Afbakeningsraad: Afbakening van munisipale wyke: Senqu Local Municipality (EC142).....	3439	5

PROVINCIAL NOTICES • PROVINSIALE KENNISGEWINGS

PROVINCIAL NOTICE 54 OF 2015**MUNICIPAL DEMARCATION BOARD : DELIMITATION OF
MUNICIPAL WARDS IN TERMS OF THE LOCAL
GOVERNMENT : MUNICIPAL STRUCTURES ACT, 1998.****Senqu Local Municipality
EC142**

In terms of Item 5 (1) of Schedule 1 to the Local Government: Municipal Structures Act, 1998 (Act No. 117 of 1998) (the Act) the Municipal Demarcation Board hereby publishes its delimitation of wards for the above-mentioned municipality. Particulars of the delimitation are listed in the Schedule.

In terms of Item 5 (2) of Schedule 1 to the Act, any person aggrieved by the delimitation may, within 14 days of publication of this notice, submit objections in writing to:

The Municipal Demarcation Board
Private Bag X123
Centurion
0046

Fax: 086 5248643
Email: wards@demarcation.org.za

The attached form MDB 5 must please be used to object. The form is also available on www.demarcation.org.za

**MS JANE THUPANA
CHAIRPERSON: MUNICIPAL DEMARCATION BOARD****SCHEDULE**

In terms of section 18(3) of the Local Government: Municipal Structures Act, 1998 (Act 117 of 1998), the MEC responsible for local government has determined that the municipal council consists of 34 councillors.

After having consulted the Independent Electoral Commission, The Municipal Demarcation Board has delimited the municipality into 17 wards in terms of Schedule 1 of the Act.

The number of registered voters in each ward does not vary by more than fifteen percent from the norm. The norm was determined by dividing the total number of voters on the municipal segment of the national common voters roll, namely 61528 voters on 5 March 2014, by the number of wards in the municipality.

An overview map of the boundary of the municipality, with the boundaries of the wards within the municipality, and a map of each ward are attached. In case of a discrepancy between the map and this schedule, the map will prevail. The ward numbers, the voting districts and voting stations in each ward, and the number of voters are as follows:

PROVINSIALE KENNISGEWING 54 VAN 2015**MUNISIPALE AFBAKENINGSRAAD :
AFBAKENING VAN MUNISIPALE WYKE INGEVOLGE DIE WET OP
PLAASLIKE REGERING: MUNISIPALE STRUKTURE, 1998****Senqu Local Municipality****EC142**

Ingevolge Item 5(1) van Bylae 1 van die Wet op Plaaslike Regering: Munisipale Strukture, 1998 (Wet No. 117 van 1998) (die Wet) publiseer die Munisipale Afbakeningsraad hiermee sy afbakening van wyke vir die bogenoemde munisipaliteit. Besonderhede van die afbakening is vervat in die Bylae.

Ingevolge item 5(2) van Bylae 1 van die Wet, kan enige persoon wat gegrief is deur 'n afbakening binne 14 dae vanaf publikasie van hierdie kennisgewing skriftelike besware voorlê aan:

Die Munisipale Afbakeningsraad
Privaatsak X123
Centurion
0046

Faks: 086 5248643
E-pos: wards@demarcation.org.za

Die aangehegte vorm MDB5 moet asseblief gebruik word om beswaar aan te teken. Die vorm is ook beskikbaar op www.demarcation.org.za

**MS JANE THUPANA
VOORSITTER : MUNISIPALE AFBAKENINGSRAAD****BYLAE**

Ingevolge artikel 18(3) van die Wet op Plaaslike Regering: Munisipale Strukture, 1998 (Wet 117 van 1998) het die LUR vir plaaslike regering bepaal dat die munisipale raad bestaan uit 34 raadslede.

Na oorlegpleging met die Onafhanklike Verkiesingskommissie het die Munisipale Afbakeningsraad die munisipaliteit in 17 wyke afgebaken ingevolge Bylae 1 van die Wet.

Die getal geregistreerde kiesers in elke wyk, wyk nie meer as vyftien persent van die norm af nie. Die norm is bepaal deur die getal geregistreerde kiesers op die munisipale segment van die nasionale gemeenskaplike kieserslys, naamlik 61528 kiesers op 5 Maart 2014, deur die getal wyke in die munisipaliteit te deel.

'n Oorsigkaart van die munisipale grens met die grense van die wyke binne die munisipale grens, en 'n kaart van elke wyk, is aangeheg. Ingeval van 'n verskil tussen 'n kaart en hierdie bylae, sal die kaart geld.

Die wyknommers, die stembedstrikte en stemlokale in elke wyk, en die getal kiesers is as volg:

Ward 1 comprises of a total of 3509 registered voters.
Wyk 1 bestaan uit 'n totaal van 3509 geregisteerde kiesers.
 MIN VOTERS/KIESER 3076 NORM 3619 MAX VOTERS/KIESER 4162

VOTING DISTRICT No. STEMDISTRIK No.	VOTING STATION NAME STEMLOKAAL NAAM	NUMBER OF VOTERS GETAL KIESERS	SPLIT VD VERDEELDE SD
11390059	BIKIZANA JUNIOR SECONDARY SCHOOL	623	
11390071	MBOBO JUNIOR SECONDARY SCHOOL	909	
11390341	NXASANA JUNIOR SECONDARY SCHOOL	326	
11390666	NDOFELA	467	
11390677	GOVERNORS DRIFT JUNIOR SECONDARY SCHOOL	609	
11390093	WALAZA VILLAGE SCHOOL	575	

Ward 2 comprises of a total of 3956 registered voters.
Wyk 2 bestaan uit 'n totaal van 3956 geregisteerde kiesers.
 MIN VOTERS/KIESER 3076 NORM 3619 MAX VOTERS/KIESER 4162

VOTING DISTRICT No. STEMDISTRIK No.	VOTING STATION NAME STEMLOKAAL NAAM	NUMBER OF VOTERS GETAL KIESERS	SPLIT VD VERDEELDE SD
11390037	QHIMIRHA JUNIOR SECONDARY SCHOOL	552	
11390688	GCINA JUNIOR SECONDARY SCHOOL	865	
11390127	STOROMO JUNIOR SECONDARY SCHOOL	918	
11390699	APOSTOLIC FAITHMISSION	710	
11390206	NDINGISHE JUNIOR SECONDARY SCHOOL	911	

Ward 3 comprises of a total of 3750 registered voters.
Wyk 3 bestaan uit 'n totaal van 3750 geregisteerde kiesers.
 MIN VOTERS/KIESER 3076 NORM 3619 MAX VOTERS/KIESER 4162

VOTING DISTRICT No. STEMDISTRIK No.	VOTING STATION NAME STEMLOKAAL NAAM	NUMBER OF VOTERS GETAL KIESERS	SPLIT VD VERDEELDE SD
11390161	CEBANO JUNIOR SECONDARY SCHOOL	695	
11390273	EKRA JUNIOR SECONDARY SCHOOL	324	
11390251	HOHOBENG JUNIOR SECONDARY SCHOOL	654	
11390217	TLOKWENG	919	
11390194	QOBOSHANE JUNIOR SECONDARY SCHOOL	1158	

Ward 4 comprises of a total of 3561 registered voters.
Wyk 4 bestaan uit 'n totaal van 3561 geregisteerde kiesers.
 MIN VOTERS/KIESER 3076 NORM 3619 MAX VOTERS/KIESER 4162

VOTING DISTRICT No. STEMDISTRIK No.	VOTING STATION NAME STEMLOKAAL NAAM	NUMBER OF VOTERS GETAL KIESERS	SPLIT VD VERDEELDE SD
--	--	-----------------------------------	--------------------------

11390048	MABELE JUNIOR SECONDARY SCHOOL	844
11390295	MKUNYAZO JUNIOR SECONDARY SCHOOL	785
11390116	BEBEZA SENIOR PRIMARY SCHOOL	312
11390611	NLANGANO	361
11390600	MAKUMSHA	510
11390598	KWABO	749

Ward 5 comprises of a total of 3383 registered voters.
Wyk 5 bestaan uit 'n totaal van 3383 geregistreerde kiesers.
 MIN VOTERS/KIESER 3076 NORM 3619 MAX VOTERS/KIESER 4162

VOTING DISTRICT No. STEMDISTRIK No.	VOTING STATION NAME STEMLOKAAL NAAM	NUMBER OF VOTERS GETAL KIESERS	SPLIT VD VERDEELDE SD
11450067	ROSSOUW SCHOOL	307	
11390701	BONGIWE JUNIOR SECONDARY SCHOOL	230	
11370013	NEW ENGLAND	197	
11370024	CLIFFORD BARN	162	
11390105	ZINGXENGENE JUNIOR SECONDARY SCHOOL	427	
11400039	BERGSTROOM FARM SCHOOL	128	
11410029	MOTKOP STATION HALL	128	
11390082	SAKHAKUDE JUNIOR SECONDARY SCHOOL	655	
11450045	CLANVILLE SHOP	54	
11390150	HILLSIDE JUNIOR SECONDARY SCHOOL	651	
11390239	PELANDABA JUNIOR SECONDARY SCHOOL	444	

Ward 6 comprises of a total of 3576 registered voters.
Wyk 6 bestaan uit 'n totaal van 3576 geregistreerde kiesers.
 MIN VOTERS/KIESER 3076 NORM 3619 MAX VOTERS/KIESER 4162

VOTING DISTRICT No. STEMDISTRIK No.	VOTING STATION NAME STEMLOKAAL NAAM	NUMBER OF VOTERS GETAL KIESERS	SPLIT VD VERDEELDE SD
11390183	MAJUBA JUNIOR SECONDARY SCHOOL	641	
11390240	NDUNGUNYA JUNIOR SECONDARY SCHOOL	766	
11390543	MALGAS JUNIOR PRIMARY SCHOOL	191	
11390228	ST MICHAELS JUNIOR SECONDARY SCHOOL	829	
11390633	MMUSONG SCHOOL	794	
11390554	BONGOLETHU JUNIOR SECONDARY SCHOOL	355	

Ward 7 comprises of a total of 3807 registered voters.
Wyk 7 bestaan uit 'n totaal van 3807 geregistreerde kiesers.
 MIN VOTERS/KIESER 3076 NORM 3619 MAX VOTERS/KIESER 4162

VOTING DISTRICT No. STEMDISTRIK No.	VOTING STATION NAME STEMLOKAAL NAAM	NUMBER OF VOTERS GETAL KIESERS	SPLIT VD VERDEELDE SD
11390464	BAMBOESSPRUIT JUNIOR SECONDARY SCHOOL	677	
11390307	THABA LESOBA JUNIOR SECONDARY SCHOOL	1403	
11390262	EGUGWINI JUNIOR SECONDARY SCHOOL	734	
11390712	TSEKANE JUNIOR SECONDARY SCHOOL	538	
11390655	MBIHILI JUNIOR SECONDARY SCHOOL	455	

Ward 8 comprises of a total of 3470 registered voters.
Wyk 8 bestaan uit 'n totaal van 3470 geregistreerde kiesers.
 MIN VOTERS/KIESER 3076 NORM 3619 MAX VOTERS/KIESER 4162

VOTING DISTRICT No. STEMDISTRIK No.	VOTING STATION NAME STEMLOKAAL NAAM	NUMBER OF VOTERS GETAL KIESERS	SPLIT VD VERDEELDE SD
11390352	TAPOLENG JUNIOR SECONDARY SCHOOL	1163	
11390745	MAKHETHA JUNIOR SECONDARY SCHOOL	968	
11390149	MOKHESI METHODIST CHURCH	1339	

Ward 9 comprises of a total of 3096 registered voters.
Wyk 9 bestaan uit 'n totaal van 3096 geregistreerde kiesers.
 MIN VOTERS/KIESER 3076 NORM 3619 MAX VOTERS/KIESER 4162

VOTING DISTRICT No. STEMDISTRIK No.	VOTING STATION NAME STEMLOKAAL NAAM	NUMBER OF VOTERS GETAL KIESERS	SPLIT VD VERDEELDE SD
11390026	KROMSPRUIT JUNIOR SECONDARY SCHOOL.	1110	
11390172	NGQUBA JUNIOR SECONDARY SCHOOL	1331	
11390318	HOITA JUNIOR SECONDARY SCHOOL	655	

Ward 10 comprises of a total of 3691 registered voters.
Wyk 10 bestaan uit 'n totaal van 3691 geregistreerde kiesers.
 MIN VOTERS/KIESER 3076 NORM 3619 MAX VOTERS/KIESER 4162

VOTING DISTRICT No. STEMDISTRIK No.	VOTING STATION NAME STEMLOKAAL NAAM	NUMBER OF VOTERS GETAL KIESERS	SPLIT VD VERDEELDE SD
11390329	TIENBANK SENIOR PRIMARY SCHOOL	854	
11390734	MOYENI OPEN SPACE	368	
11390644	EKUZOLENI SCHOOL	1310	
11310017	BUNGA HALL	1159	

Ward 11 comprises of a total of 3788 registered voters.
Wyk 11 bestaan uit 'n totaal van 3788 geregistreerde kiesers.
 MIN VOTERS/KIESER 3076 NORM 3619 MAX VOTERS/KIESER 4162

VOTING DISTRICT No. STEMDISTRIK No.	VOTING STATION NAME STEMLOKAAL NAAM	NUMBER OF VOTERS GETAL KIESERS	SPLIT VD VERDEELDE SD
11390419	NTSIMEKWENI JUNIOR SECONDARY SCHOOL	739	
11390431	MANXEBA JUNIOR SECONDARY SCHOOL	846	
11390420	DIBINKONZO JUNIOR SECONDARY SCHOOL	376	
11390453	NDUKU JUNIOR SECONDARY SCHOOL	790	
11390442	SKISAZANA JUNIOR SECONDARY SCHOOL	608	
11390565	EZINTATYANENI SCHOOL	429	

Ward 12 comprises of a total of 4038 registered voters.
Wyk 12 bestaan uit 'n totaal van 4038 geregistreerde kiesers.
 MIN VOTERS/KIESER 3076 NORM 3619 MAX VOTERS/KIESER 4162

VOTING DISTRICT No. STEMDISTRIK No.	VOTING STATION NAME STEMLOKAAL NAAM	NUMBER OF VOTERS GETAL KIESERS	SPLIT VD VERDEELDE SD
11390330	MNCUNUBENI JUNIOR SECONDARY SCHOOL	255	
11390284	HLOMENDLINI JUNIOR SECONDARY SCHOOL	439	
11390587	JOZANASNEK SCHOOL	391	
11390475	ESILINDINI JUNIOR SECONDARY SCHOOL	1077	
11390486	NGOGOVILLE JUNIOR SECONDARY SCHOOL	699	
11390497	JOZANASHOEK JUNIOR SECONDARY SCHOOL	1177	

Ward 13 comprises of a total of 4053 registered voters.
Wyk 13 bestaan uit 'n totaal van 4053 geregistreerde kiesers.
 MIN VOTERS/KIESER 3076 NORM 3619 MAX VOTERS/KIESER 4162

VOTING DISTRICT No. STEMDISTRIK No.	VOTING STATION NAME STEMLOKAAL NAAM	NUMBER OF VOTERS GETAL KIESERS	SPLIT VD VERDEELDE SD
11390723	WITTEBERGEN JUNIOR SECONDARY SCHOOL	400	
11390396	ST MARYS SENIOR PRIMARY SCHOOL	779	
11390385	DIPANA SENIOR PRIMARY SCHOOL	779	
11390374	ZAVA JUNIOR SECONDARY SCHOOL	713	
11390363	MDLOKOVANA JUNIOR SECONDARY SCHOOL	175	
11390576	NKOPANE SCHOOL	570	
11390408	KHIBA JUNIOR SECONDARY SCHOOL	637	

Ward 14 comprises of a total of 3702 registered voters.
Wyk 14 bestaan uit 'n totaal van 3702 geregisteerde kiesers.
 MIN VOTERS/KIESER 3076 NORM 3619 MAX VOTERS/KIESER 4162

VOTING DISTRICT No. STEMDISTRIK No.	VOTING STATION NAME STEMLOKAAL NAAM	NUMBER OF VOTERS GETAL KIESERS	SPLIT VD VERDEELDE SD
11280035	DR PHALO	786	
11280013	TOWN HALL	1054	
11280024	KWEZI NALEDI COMMUNITY HALL	1862	

Ward 15 comprises of a total of 3311 registered voters.
Wyk 15 bestaan uit 'n totaal van 3311 geregisteerde kiesers.
 MIN VOTERS/KIESER 3076 NORM 3619 MAX VOTERS/KIESER 4162

VOTING DISTRICT No. STEMDISTRIK No.	VOTING STATION NAME STEMLOKAAL NAAM	NUMBER OF VOTERS GETAL KIESERS	SPLIT VD VERDEELDE SD
11370057	RHODES COMMUNITY HALL	429	
11210027	NKULULEKO COMMUNITY HALL	1714	
11300016	AGRICULTURAL HALL	121	
11370035	MOSHESHFORD COUNTRY CLUB	257	
11390622	NOMLENGANA SCHOOL	121	
11370046	PERCIVALE BARN	144	
11380036	TANTALLON BARN	98	
11390015	DANGERS HOEK JUNIOR SECONDARY SCHOOL	170	
11390060	ROCKCLIFF JUNIOR SECONDARY SCHOOL	257	

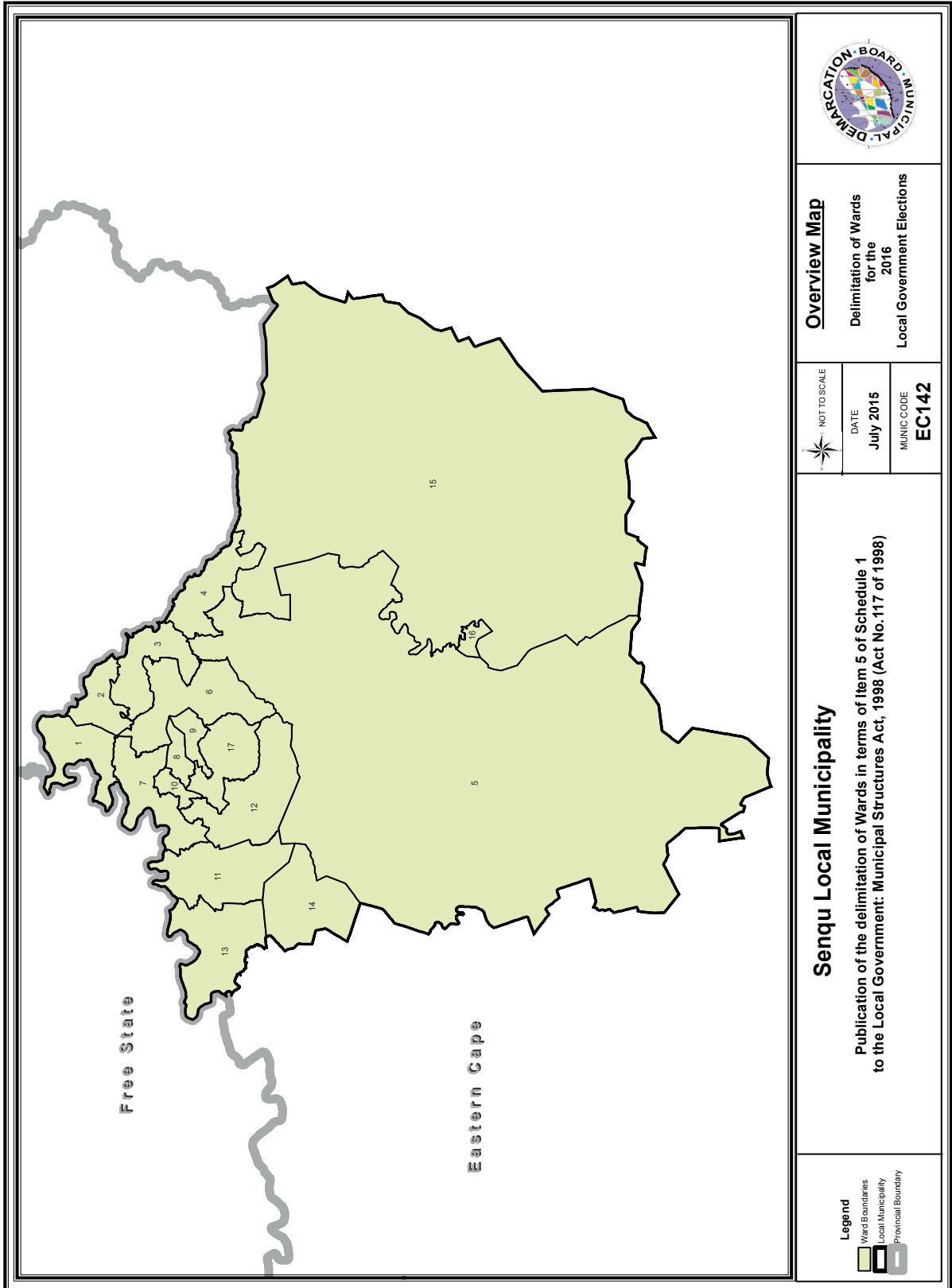
Ward 16 comprises of a total of 3304 registered voters.
Wyk 16 bestaan uit 'n totaal van 3304 geregisteerde kiesers.
 MIN VOTERS/KIESER 3076 NORM 3619 MAX VOTERS/KIESER 4162

VOTING DISTRICT No. STEMDISTRIK No.	VOTING STATION NAME STEMLOKAAL NAAM	NUMBER OF VOTERS GETAL KIESERS	SPLIT VD VERDEELDE SD
11210038	MALIKHANYE SENIOR SCHOOL	802	
11210049	SIZAMULWAZI PUBLIC SCHOOL	1517	
11210016	MUNICIPAL TOWN HALL	985	

Ward 17 comprises of a total of 3533 registered voters.
Wyk 17 bestaan uit 'n totaal van 3533 geregisteerde kiesers.
 MIN VOTERS/KIESER 3076 NORM 3619 MAX VOTERS/KIESER 4162

VOTING DISTRICT No. STEMDISTRIK No.	VOTING STATION NAME STEMLOKAAL NAAM	NUMBER OF VOTERS GETAL KIESERS	SPLIT VD VERDEELDE SD
11310028	TAPOLENG ROMAN CATHOLIC CHURCH	490	

11390532	MAPOLO JUNIOR SECONDARY SCHOOL	644
11390138	VOYZANA JUNIOR SECONDARY SCHOOL	709
11390521	JOVELENI SENIOR PRIMARY SCHOOL	599
11390510	BENSONVALE JUNIOR SECONDARY SCHOOL	333
11390509	SUNDUZA JUNIOR SECONDARY SCHOOL	758

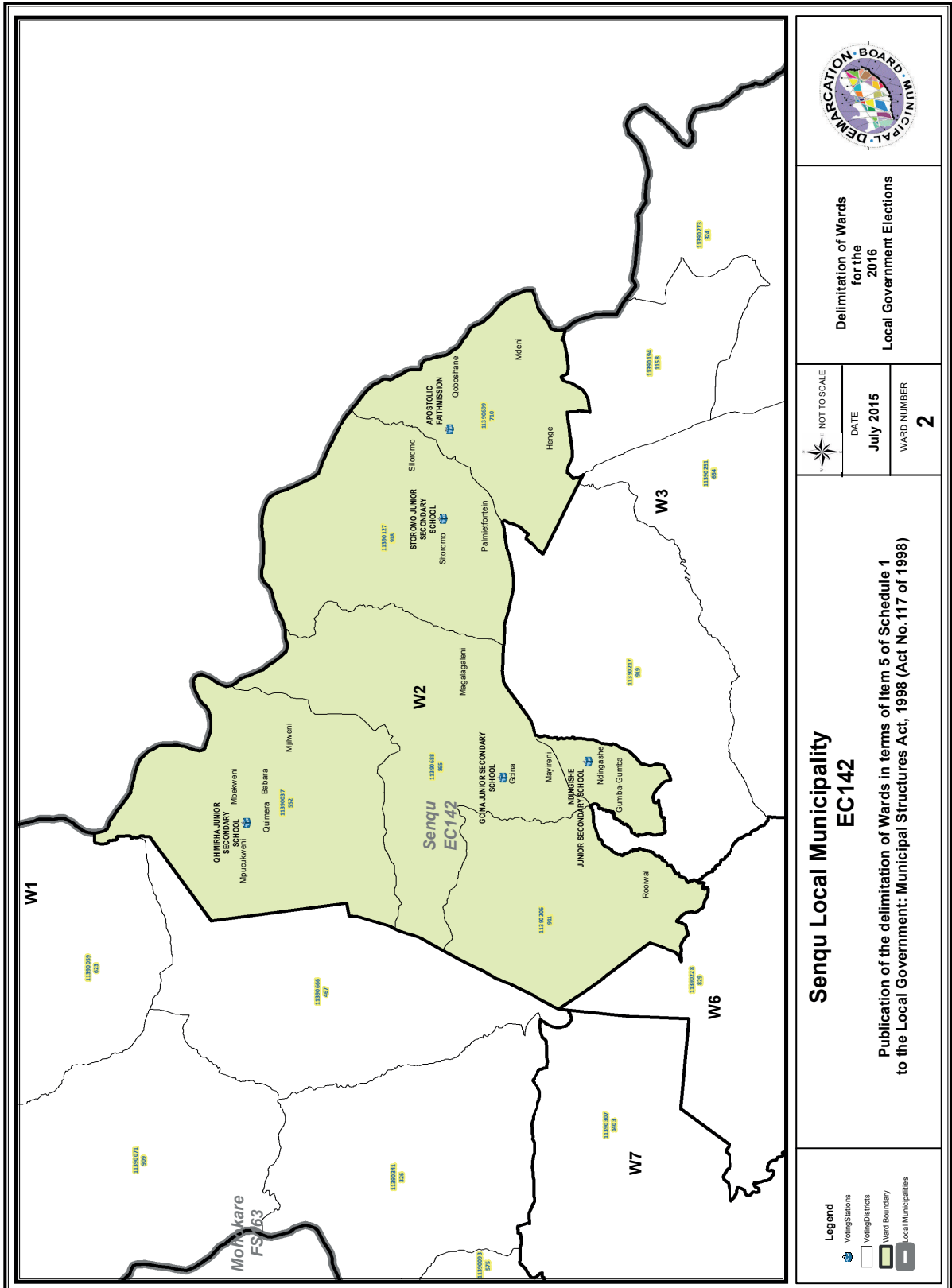


Overview Map
 Delimitation of Wards
 for the
 2016
 Local Government Elections

NOT TO SCALE
 DATE
 July 2015
 MUNIC CODE
EC142

Senqu Local Municipality
 Publication of the delimitation of Wards in terms of Item 5 of Schedule 1
 to the Local Government: Municipal Structures Act, 1998 (Act No. 117 of 1998)

Legend
 Ward Boundaries
 Local Municipality
 Provincial Boundary



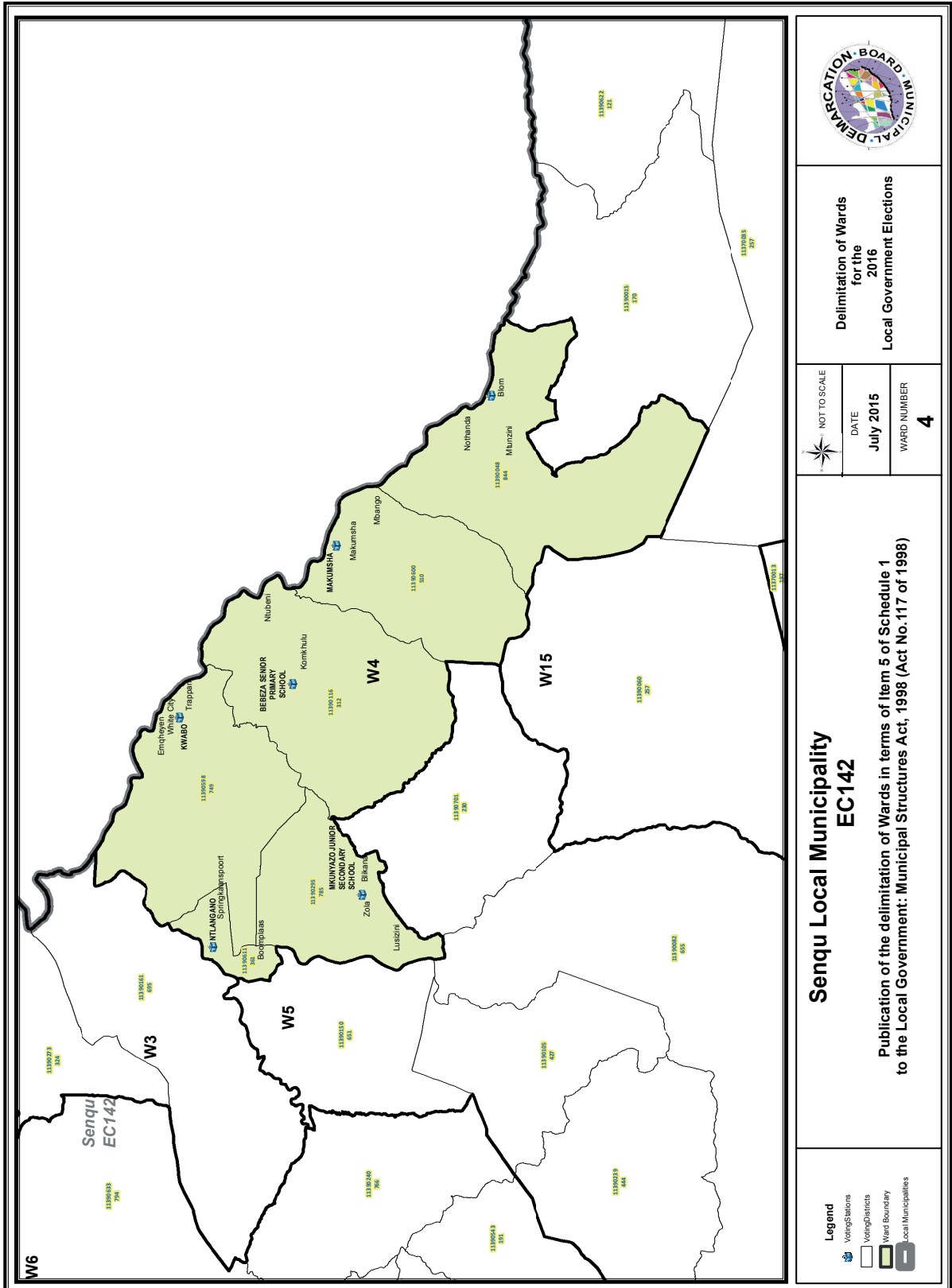
**Delimitation of Wards
for the
2016
Local Government Elections**

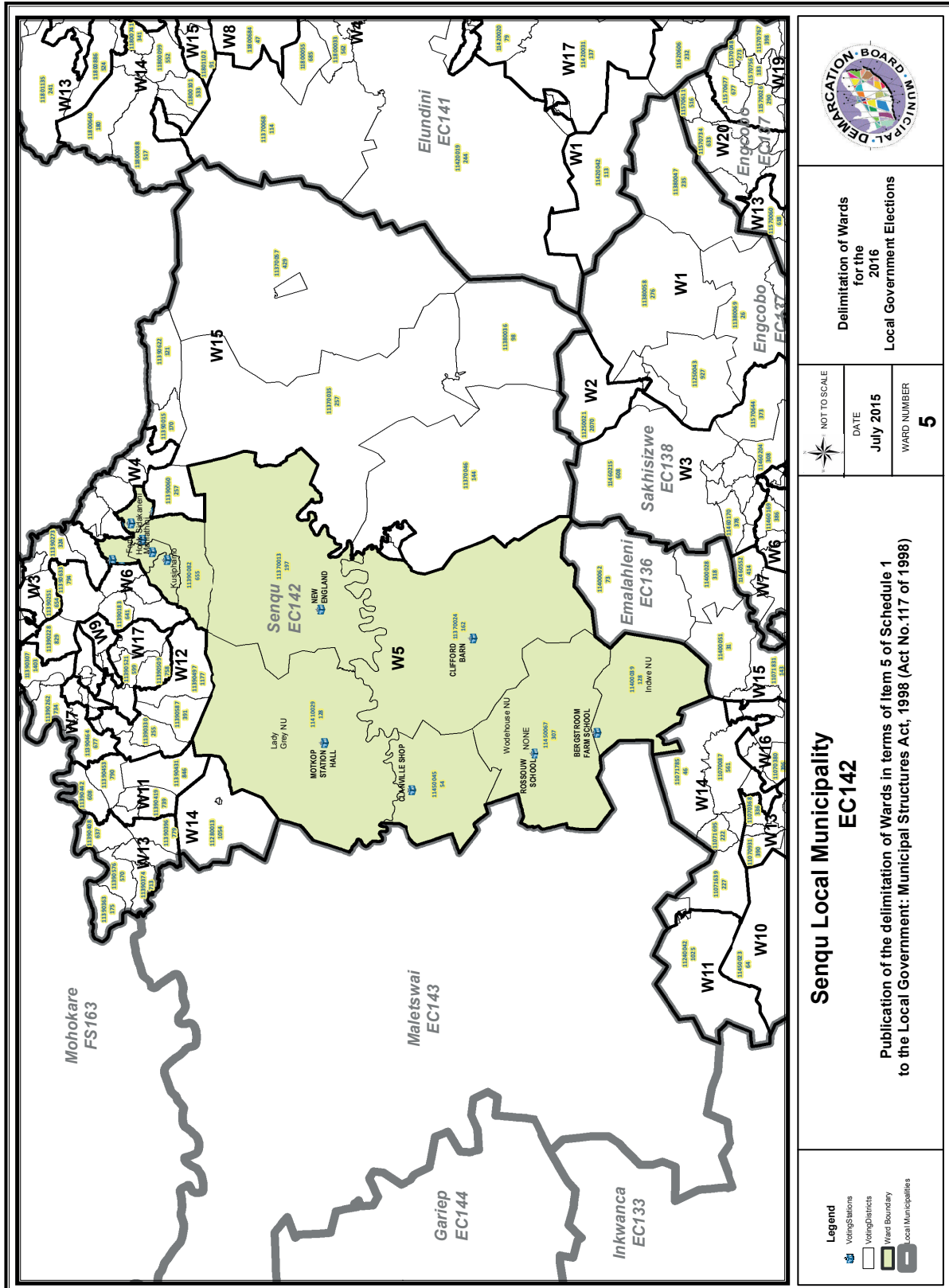
NOT TO SCALE	DATE	WARD NUMBER 2
	July 2015	

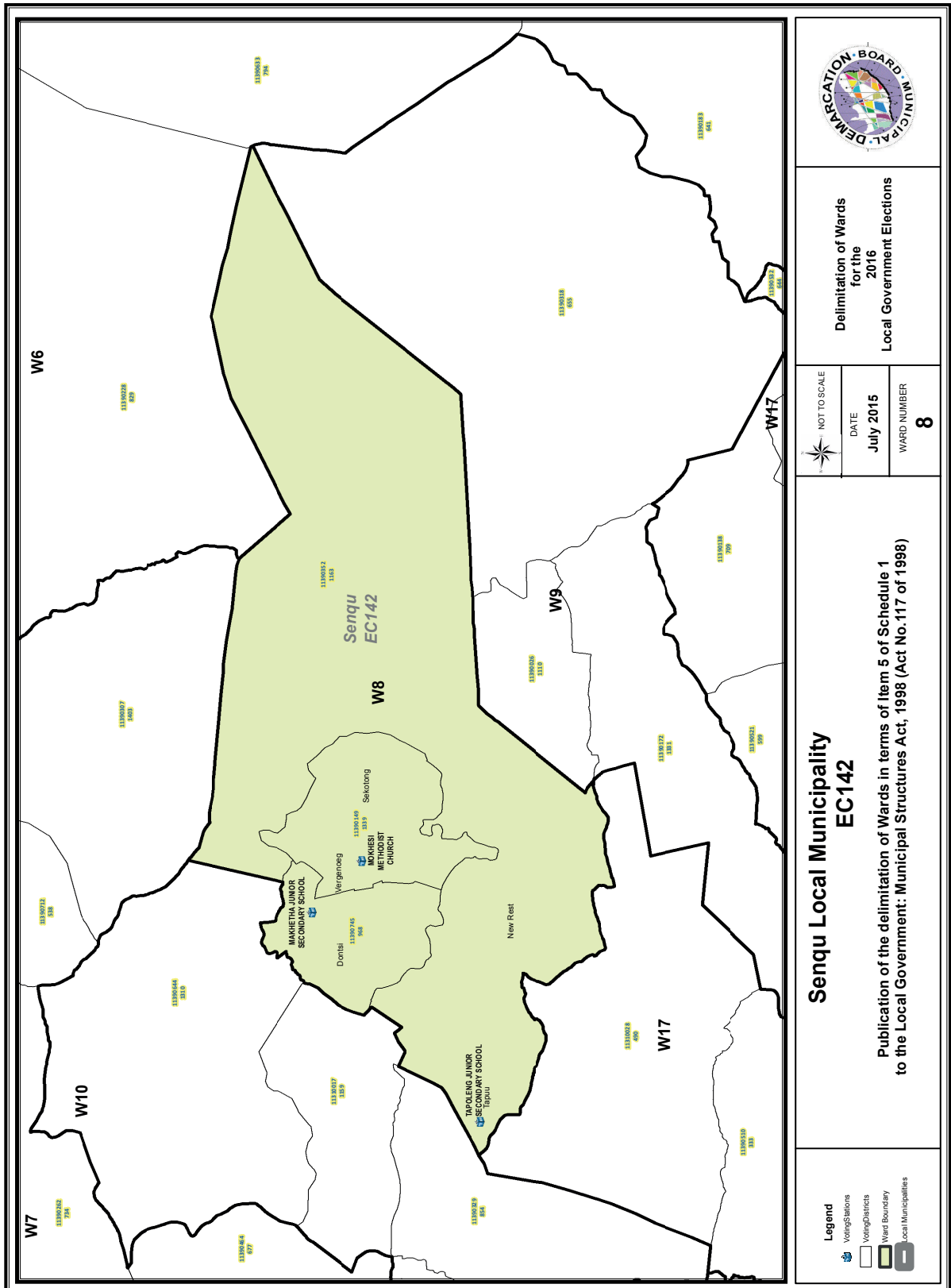
**Senqu Local Municipality
EC142**

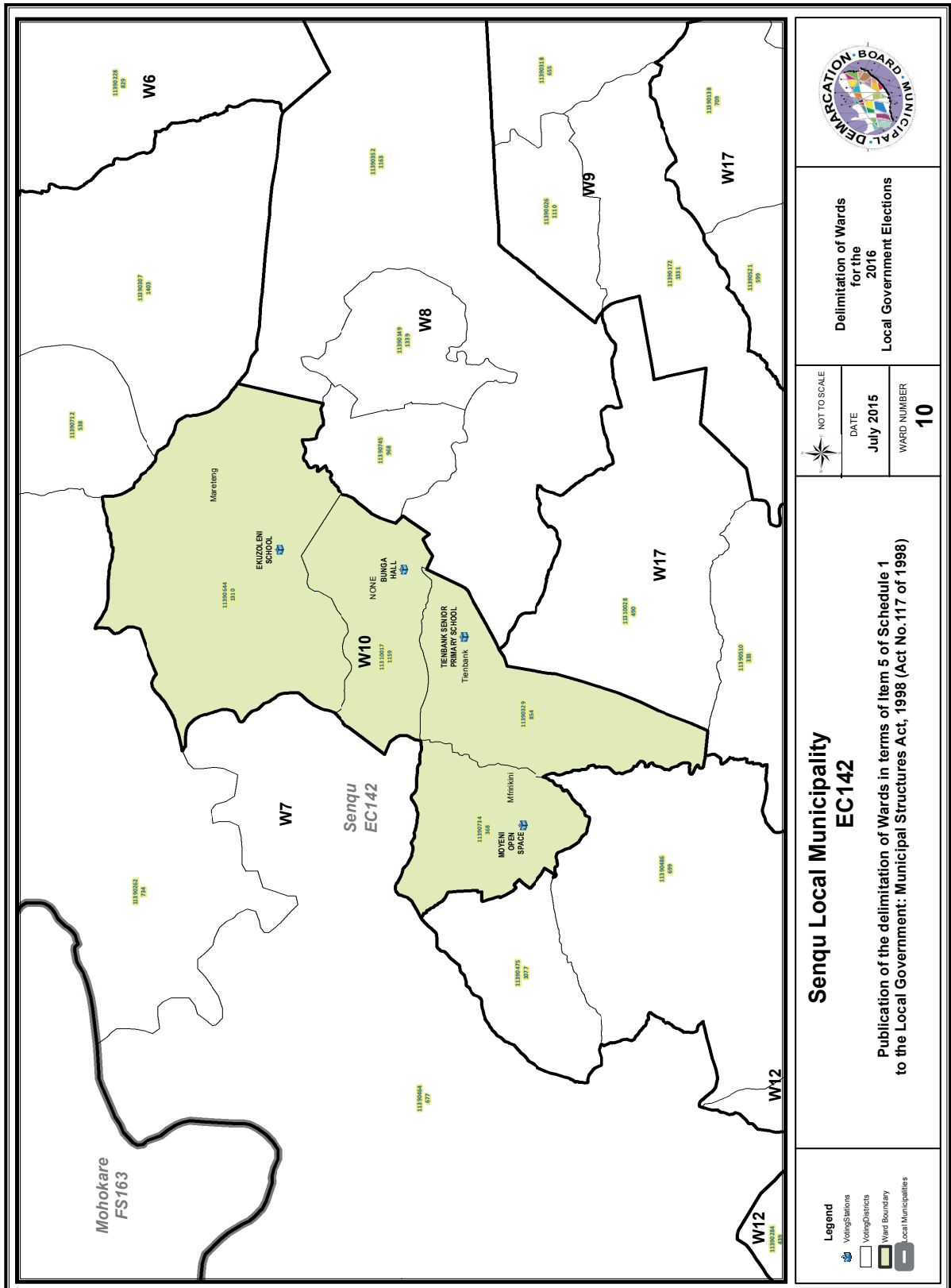
Publication of the delimitation of Wards in terms of Item 5 of Schedule 1 to the Local Government: Municipal Structures Act, 1998 (Act No. 117 of 1998)

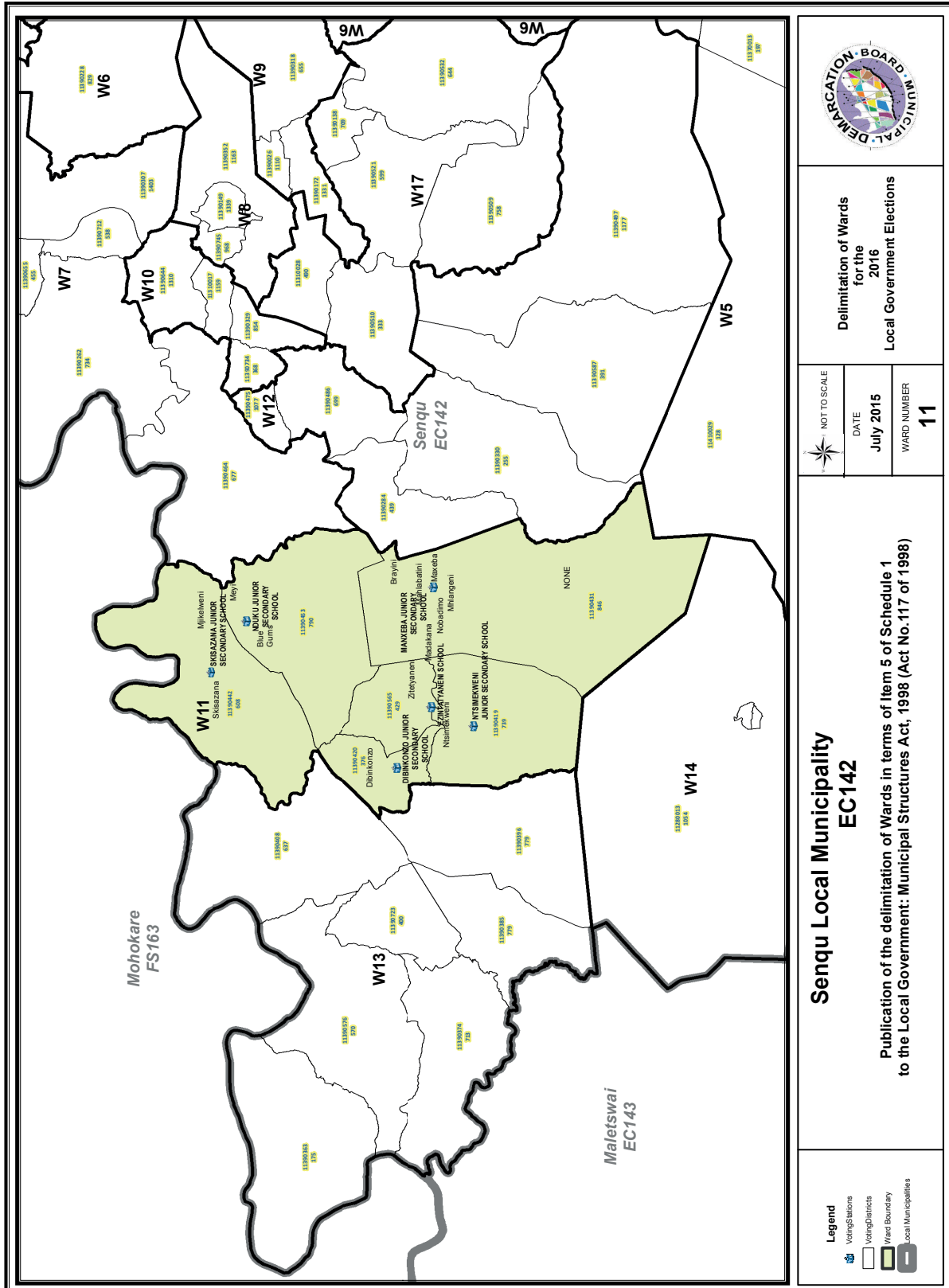
- Legend**
- Voting Stations
 - Voting Districts
 - Ward Boundary
 - Local Municipalities

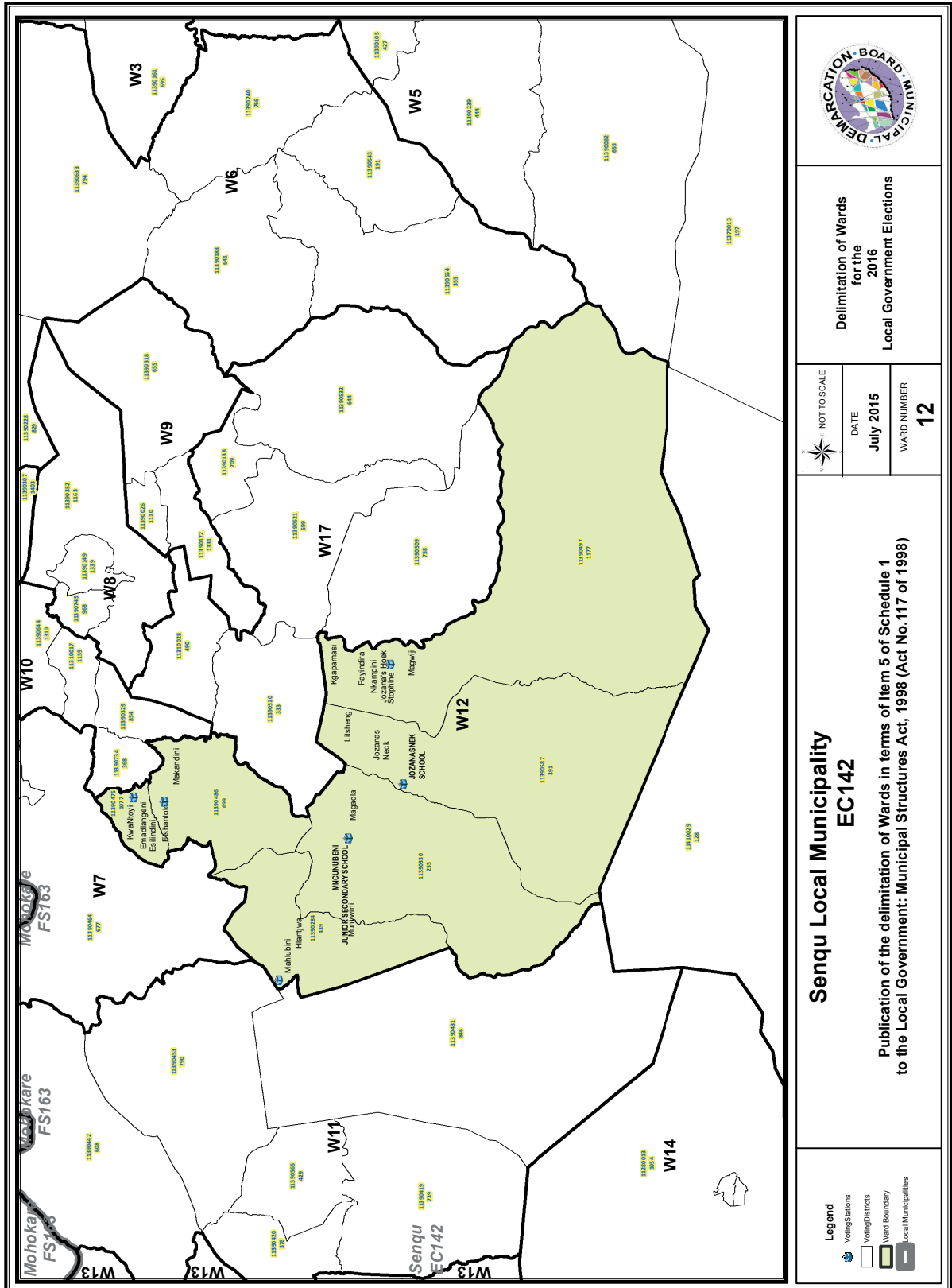


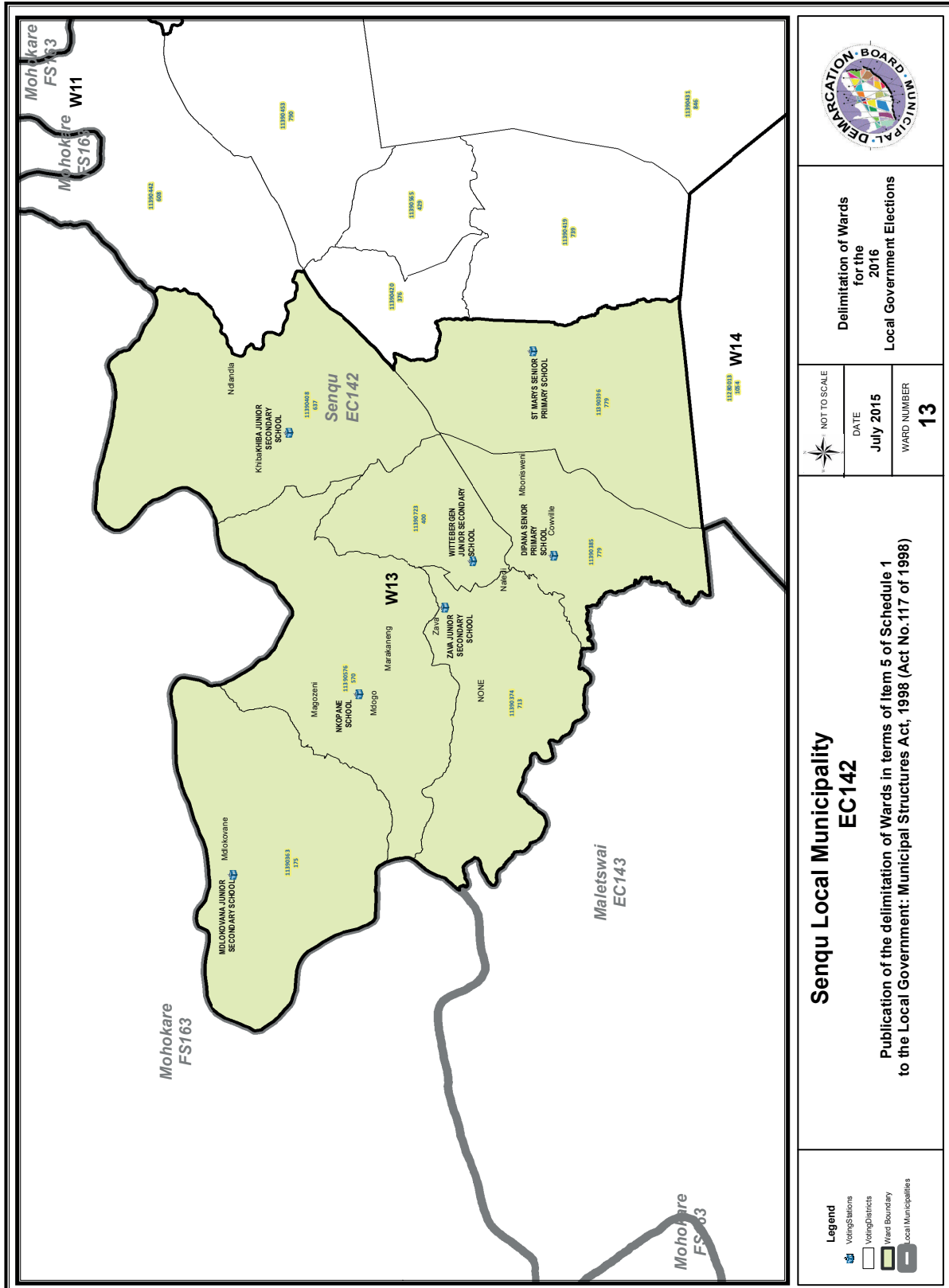












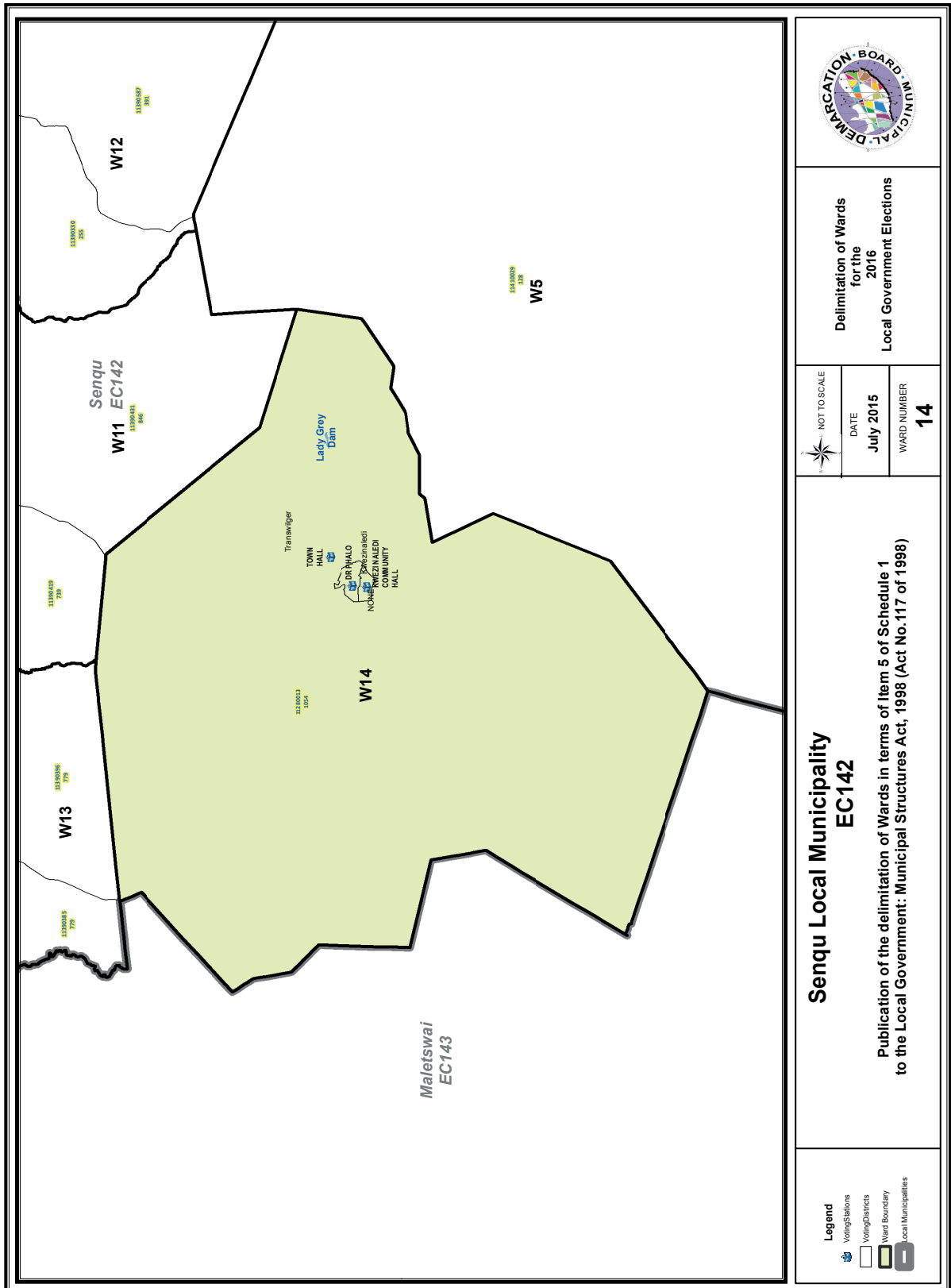
Delimitation of Wards
for the
2016
Local Government Elections

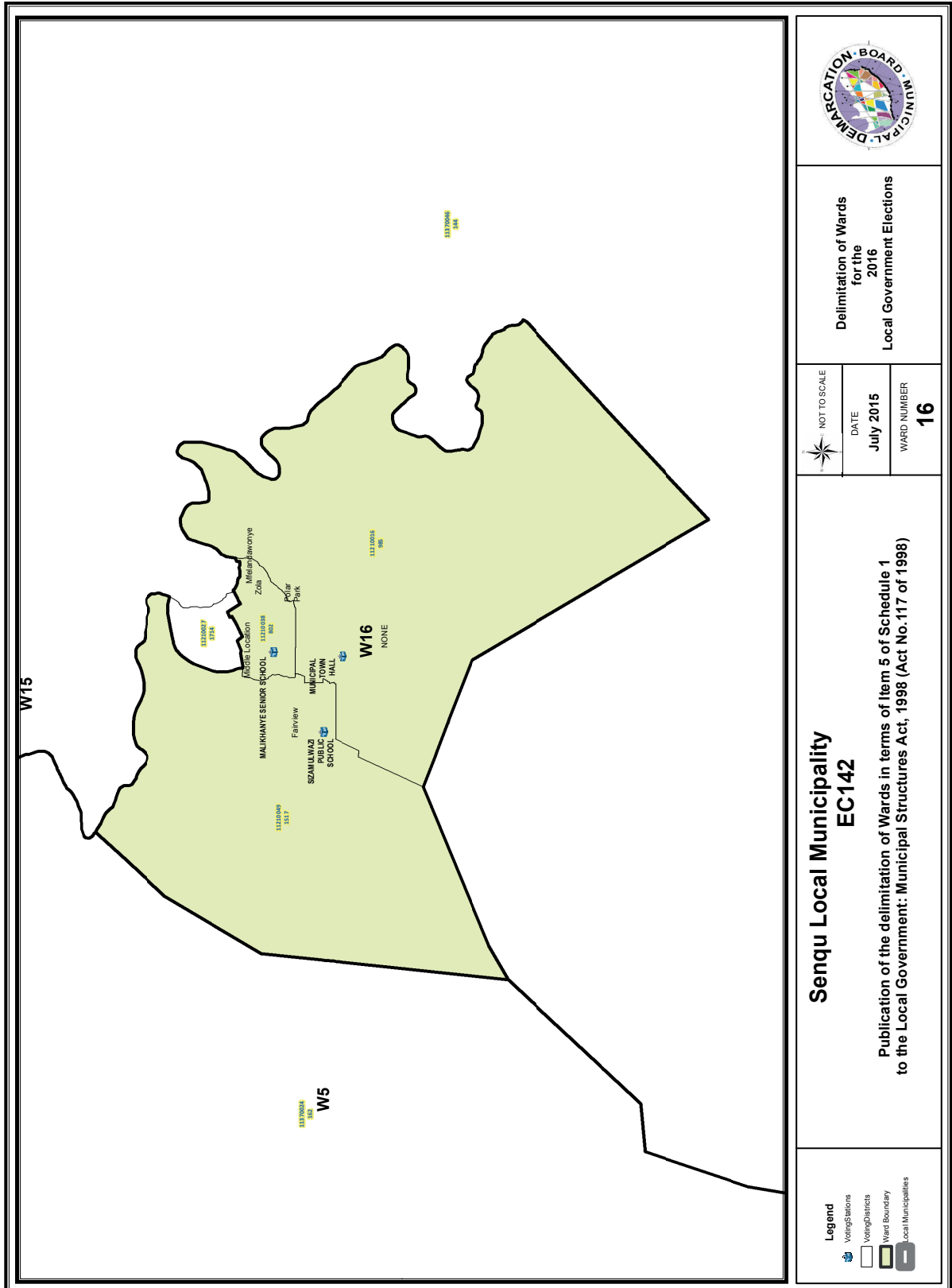
NOT TO SCALE
DATE
July 2015
WARD NUMBER
13

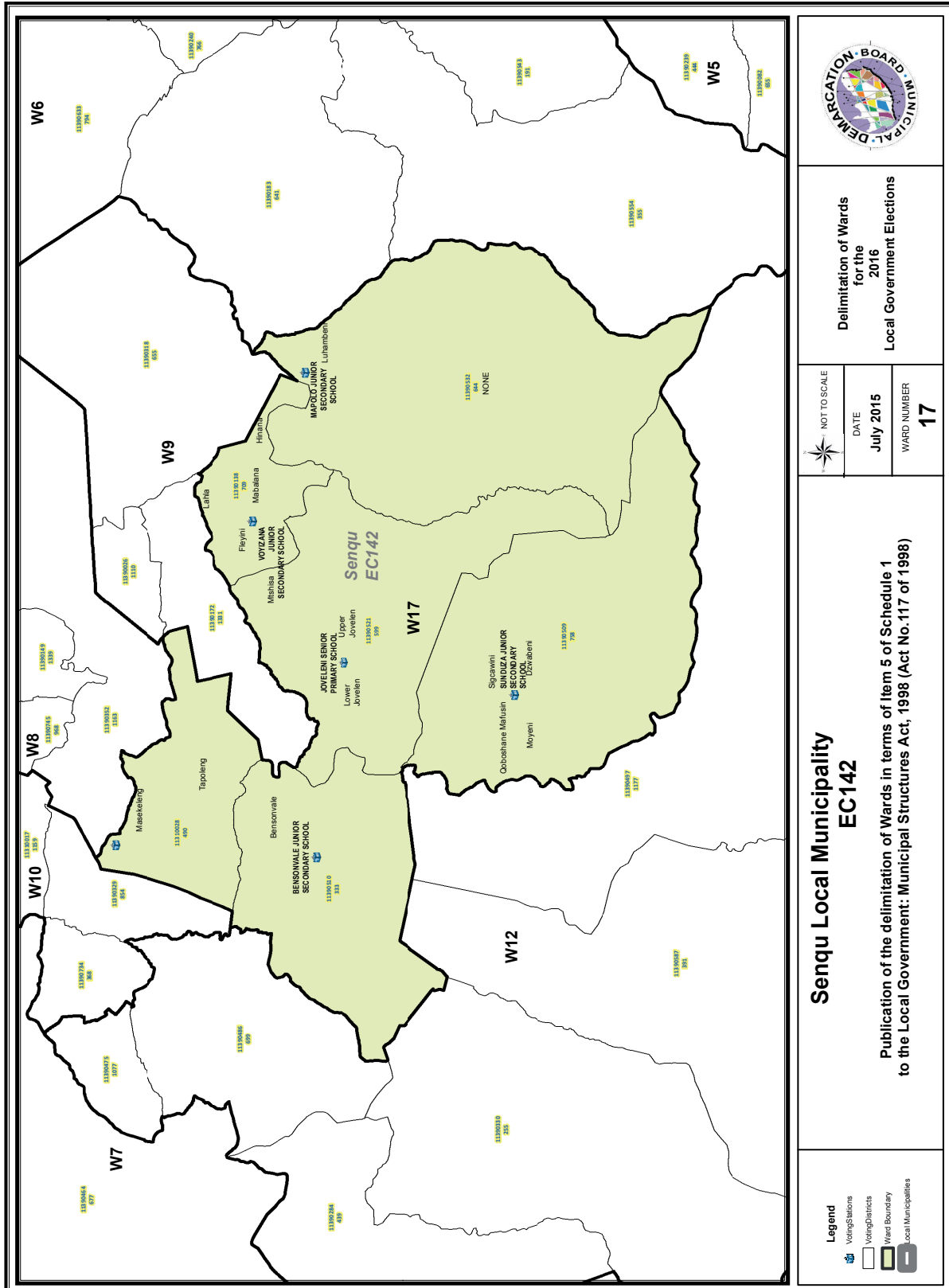
**Senqu Local Municipality
EC142**

Publication of the delimitation of Wards in terms of Item 5 of Schedule 1
to the Local Government: Municipal Structures Act, 1998 (Act No.117 of 1998)

- Legend**
- Voting Stations
 - Voting Districts
 - Ward Boundary
 - Local Municipalities







FORM/VORM MDB5

WARD DELIMITATION/

WYKSAFBAKENING

**OBJECTION IN TERMS OF ITEM 5(2) OF SCHEDULE 1 TO THE LOCAL GOVERNMENT:
MUNICIPAL STRUCTURES ACT, 1998**

**BESWAAR INGEVOLGE ITEM 5(2) VAN BYLAE 1 VAN DIE WET OP PLAASLIKE REGERING:
MUNISIPALE STRUKTURE, 1998**

Name of municipality/ Naam van Munisipaliteit :

Code/Kode :

**Name of aggrieved person/institution/Naam van beswaarde persoon/instelling :
.....**

**Contact person in case of an institution/ Kontak persoon in geval van 'n instelling:
.....**

Address/Adres:

Tel. number/ Tel. nommer:.....Cell number/ Selfoonnommer:

Email address:

PLEASE USE ADDITIONAL PAGE SHOULD THE ALTERNATIVE PROPOSALS BE MORE THAN THE FOLLOWING SPACE AVAILABLE.

I request the Municipal Demarcation Board to consider the following alternative proposals/ Ek versoek die Munisipale Afbakeningsraad om die volgende alternatiewe voorstelle te oorweeg:

Ward number/ Wyk nommer	The ward should comprise of the following voting districts (Provide voting district number and the number of voters in brackets e.g. VD1123456(1500)+VD345678(2500)=4000)/ Die wyk moet bestaan uit die volgende stemdistrikte: (Voorsien die stemdistriknommer en die getal geregistreerde kiesers as volg VD1123456(1500)+VD345678(2500)=4000)	Motivation /Motivering

I confirm that/ Ek bevestig dat:

- each cluster of voting districts form a contiguous ward/ die saamgevoegde stemdistrikte vorm 'n aaneenlopende wyk;
- the number of voters in each ward fall within the minimum and maximum of voters allowed per ward/ die getal kiesers in elke wyk is binne die minimum en maksimum getal wat per wyk toegelaat word;
- the proposed ward boundaries comply, in general, with the criteria/ die voorgestelde wyke voldoen in die algemeen aan die kriteria.

SIGNATURE

NAME AND SURNAME

DATE

IMPORTANT

Information

from Government Printing Works

Dear Valued Customers,

Government Printing Works has implemented rules for completing and submitting the electronic Adobe Forms when you, the customer, submits your notice request.

Please take note of these guidelines when completing your form.



GPW Business Rules

1. No hand written notices will be accepted for processing, this includes Adobe forms which have been completed by hand.
2. Notices can only be submitted in Adobe electronic form format to the email submission address submit.egazette@gpw.gov.za. This means that any notice submissions not on an Adobe electronic form that are submitted to this mailbox will be **rejected**. National or Provincial gazette notices, where the Z95 or Z95Prov must be an Adobe form but the notice content (body) will be an attachment.
3. Notices brought into GPW by "walk-in" customers on electronic media can only be submitted in Adobe electronic form format. This means that any notice submissions not on an Adobe electronic form that are submitted by the customer on electronic media will be **rejected**. National or Provincial gazette notices, where the Z95 or Z95Prov must be an Adobe form but the notice content (body) will be an attachment.
4. All customers who walk in to GPW that wish to submit a notice that is not on an electronic Adobe form will be routed to the Contact Centre where the customer will be taken through the completion of the form by a GPW representative. Where a customer walks into GPW with a stack of hard copy notices delivered by a messenger on behalf of a newspaper the messenger must be referred back to the sender as the submission does not adhere to the submission rules.
5. All notice submissions that do not comply with point 2 will be charged full price for the notice submission.
6. The current cut-off of all Gazette's remains unchanged for all channels. (Refer to the GPW website for submission deadlines – www.gpwonline.co.za)
7. Incorrectly completed forms and notices submitted in the wrong format will be rejected to the customer to be corrected and resubmitted. Assistance will be available through the Contact Centre should help be required when completing the forms. (012-748 6200 or email info.egazette@gpw.gov.za)
8. All re-submissions by customers will be subject to the above cut-off times.
9. All submissions and re-submissions that miss the cut-off will be rejected to the customer to be submitted with a new publication date.
10. Information on forms will be taken as the primary source of the notice to be published. Any instructions that are on the email body or covering letter that contradicts the notice form content will be ignored.

You are therefore advised that effective from **Monday, 18 May 2015** should you not comply with our new rules of engagement, all notice requests will be rejected by our new system.

Furthermore, the fax number **012- 748 6030** will also be **discontinued** from this date and customers will only be able to submit notice requests through the email address submit.egazette@gpw.gov.za.



eGazette



Printed by and obtainable from the Government Printer, Bosman Street, Private Bag X85, Pretoria, 0001.
 Contact Centre Tel: 012-748 6200. eMail: info.egazette@gpw.gov.za
 Also available at the Legal Advisory Services, **Province of the Eastern Cape**, Private Bag X0047, Bisho, 5605.
 Tel. (040) 635-0052.