



PROVINCE OF THE EASTERN CAPE  
IPHONDO LEMPUMA KOLONI  
PROVINSIE OOS-KAAP

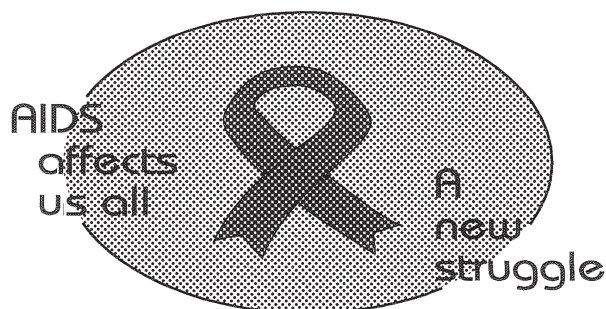
**Provincial Gazette  
Igazethi Yephondo  
Provinsiale Koerant  
(Extraordinary)**

Vol. 22

BISHO/  
KING WILLIAM'S TOWN, 22 JULY 2015

No. 3440

**We all have the power to prevent AIDS**



**Prevention is the cure**

**AIDS  
HELPLINE**

**0800 012 322**

DEPARTMENT OF HEALTH

*N.B. The Government Printing Works will not be held responsible for the quality of "Hard Copies" or "Electronic Files" submitted for publication purposes*

ISSN 1682-4556



9 771682 455006

03440



# IMPORTANT

## Information

### from Government Printing Works

Dear Valued Customers,

Government Printing Works has implemented rules for completing and submitting the electronic Adobe Forms when you, the customer, submits your notice request.

Please take note of these guidelines when completing your form.



#### GPW Business Rules

1. No hand written notices will be accepted for processing, this includes Adobe forms which have been completed by hand.
2. Notices can only be submitted in Adobe electronic form format to the email submission address [submit.egazette@gpw.gov.za](mailto:submit.egazette@gpw.gov.za). This means that any notice submissions not on an Adobe electronic form that are submitted to this mailbox will be **rejected**. National or Provincial gazette notices, where the Z95 or Z95Prov must be an Adobe form but the notice content (body) will be an attachment.
3. Notices brought into GPW by "walk-in" customers on electronic media can only be submitted in Adobe electronic form format. This means that any notice submissions not on an Adobe electronic form that are submitted by the customer on electronic media will be **rejected**. National or Provincial gazette notices, where the Z95 or Z95Prov must be an Adobe form but the notice content (body) will be an attachment.
4. All customers who walk in to GPW that wish to submit a notice that is not on an electronic Adobe form will be routed to the Contact Centre where the customer will be taken through the completion of the form by a GPW representative. Where a customer walks into GPW with a stack of hard copy notices delivered by a messenger on behalf of a newspaper the messenger must be referred back to the sender as the submission does not adhere to the submission rules.
5. All notice submissions that do not comply with point 2 will be charged full price for the notice submission.
6. The current cut-off of all Gazette's remains unchanged for all channels. (Refer to the GPW website for submission deadlines – [www.gpwonline.co.za](http://www.gpwonline.co.za))
7. Incorrectly completed forms and notices submitted in the wrong format will be rejected to the customer to be corrected and resubmitted. Assistance will be available through the Contact Centre should help be required when completing the forms. (012-748 6200 or email [info.egazette@gpw.gov.za](mailto:info.egazette@gpw.gov.za))
8. All re-submissions by customers will be subject to the above cut-off times.
9. All submissions and re-submissions that miss the cut-off will be rejected to the customer to be submitted with a new publication date.
10. Information on forms will be taken as the primary source of the notice to be published. Any instructions that are on the email body or covering letter that contradicts the notice form content will be ignored.

You are therefore advised that effective from **Monday, 18 May 2015** should you not comply with our new rules of engagement, all notice requests will be rejected by our new system.

Furthermore, the fax number **012- 748 6030** will also be **discontinued** from this date and customers will only be able to submit notice requests through the email address [submit.egazette@gpw.gov.za](mailto:submit.egazette@gpw.gov.za).

**DISCLAIMER:**

Government Printing Works reserves the right to apply the 25% discount to all Legal and Liquor notices that comply with the business rules for notice submissions for publication in gazettes.

National, Provincial, Road Carrier Permits and Tender notices will pay the price as published in the Government Gazettes.

For any information, please contact the eGazette Contact Centre on 012-748 6200 or email [info.egazette@gpw.gov.za](mailto:info.egazette@gpw.gov.za)

**Table of Contents**

<i>No.</i>		<i>Gazette No.</i>	<i>Page No.</i>
<b>GENERAL NOTICES • ALGEMENE KENNISGEWINGS</b>			
150	Wet Op Plaaslike Regering: Munisipale Strukture (117/1998: Munisipale Afbakeningsraad: Afbakening van munisipale wyke: Emalahleni Local Municipality (EC136).....	3440	4
150	Wet Op Plaaslike Regering: Munisipale Strukture (117/1998: Munisipale Afbakeningsraad: Afbakening van munisipale wyke: Emalahleni Local Municipality (EC136).....	3440	5

---

**GENERAL NOTICES • ALGEMENE KENNISGEWINGS**

---

**NOTICE 150 OF 2015****MUNICIPAL DEMARCATION BOARD : DELIMITATION OF  
MUNICIPAL WARDS IN TERMS OF THE LOCAL  
GOVERNMENT : MUNICIPAL STRUCTURES ACT, 1998.****Emalahleni Local Municipality  
EC136**

In terms of Item 5 (1) of Schedule 1 to the Local Government: Municipal Structures Act, 1998 (Act No. 117 of 1998) (the Act) the Municipal Demarcation Board hereby publishes its delimitation of wards for the above-mentioned municipality. Particulars of the delimitation are listed in the Schedule.

In terms of Item 5 (2) of Schedule 1 to the Act, any person aggrieved by the delimitation may, within 14 days of publication of this notice, submit objections in writing to:

The Municipal Demarcation Board  
Private Bag X123  
Centurion  
0046

Fax: 086 5248643  
Email: wards@demarcation.org.za

The attached form MDB 5 must please be used to object. The form is also available on [www.demarcation.org.za](http://www.demarcation.org.za)

**MS JANE THUPANA  
CHAIRPERSON: MUNICIPAL DEMARCATION BOARD****SCHEDULE**

In terms of section 18(3) of the Local Government: Municipal Structures Act, 1998 ( Act 117 of 1998), the MEC responsible for local government has determined that the municipal council consists of 34 councillors.

After having consulted the Independent Electoral Commission, The Municipal Demarcation Board has delimited the municipality into 17 wards in terms of Schedule 1 of the Act.

The number of registered voters in each ward does not vary by more than fifteen percent from the norm. The norm was determined by dividing the total number of voters on the municipal segment of the national common voters roll, namely 60301 voters on 5 March 2014, by the number of wards in the municipality.

An overview map of the boundary of the municipality, with the boundaries of the wards within the municipality, and a map of each ward are attached. In case of a discrepancy between the map and this schedule, the map will prevail. The ward numbers, the voting districts and voting stations in each ward, and the number of voters are as follows:

**NOTICE 150 OF 2015****MUNISIPALE AFBAKENINGSRAAD :  
AFBAKENING VAN MUNISIPALE WYKE INGEVOLGE DIE WET OP  
PLAASLIKE REGERING: MUNISIPALE STRUKTURE, 1998****Emalahleni Local Municipality****EC136**

Ingevolge Item 5(1) van Bylae 1 van die Wet op Plaaslike Regering: Munisipale Strukture, 1998 (Wet No. 117 van 1998) ( die Wet ) publiseer die Munisipale Afbakeningsraad hiermee sy afbakening van wyke vir die bogenoemde munisipaliteit. Besonderhede van die afbakening is vervat in die Bylae.

Ingevolge item 5(2) van Bylae 1 van die Wet, kan enige persoon wat gegrief is deur 'n afbakening binne 14 dae vanaf publikasie van hierdie kennisgewing skriftelike besware voorlê aan:

Die Munisipale Afbakeningsraad  
Privaatsak X123  
Centurion  
0046

Faks: 086 5248643  
E-pos: wards@demarcation.org.za

Die aangehegte vorm MDB5 moet asseblief gebruik word om beswaar aan te teken. Die vorm is ook beskikbaar op [www.demarcation.org.za](http://www.demarcation.org.za)

**MS JANE THUPANA  
VOORSITTER : MUNISIPALE AFBAKENINGSRAAD****BYLAE**

Ingevolge artikel 18(3) van die Wet op Plaaslike Regering: Munisipale Strukture, 1998 (Wet 117 van 1998) het die LUR vir plaaslike regering bepaal dat die munisipale raad bestaan uit 34 raadslede.

Na oorlegpleging met die Onafhanklike Verkiesingskommissie het die Munisipale Afbakeningsraad die munisipaliteit in 17 wyke afgebaken ingevolge Bylae 1 van die Wet.

Die getal geregistreerde kiesers in elke wyk, wyk nie meer as vyftien persent van die norm af nie. Die norm is bepaal deur die getal geregistreerde kiesers op die munisipale segment van die nasionale gemeenskaplike kieserslys, naamlik 60301 kiesers op 5 Maart 2014, deur die getal wyke in die munisipaliteit te deel.

'n Oorsigkaart van die munisipale grens met die grense van die wyke binne die munisipale grens, en 'n kaart van elke wyk, is aangeheg. Ingeval van 'n verskil tussen 'n kaart en hierdie bylae, sal die kaart geld.

Die wyknommers, die stembedstrikte en stemlokale in elke wyk, en die getal kiesers is as volg:

**Ward 1** comprises of a total of 3578 registered voters.  
**Wyk 1** bestaan uit 'n totaal van 3578 geregistreerde kiesers.  
 MIN VOTERS/KIESER 3015 NORM 3547 MAX VOTERS/KIESER 4079

VOTING DISTRICT No. STEMDISTRIK No.	VOTING STATION NAME STEMLOKAAL NAAM	NUMBER OF VOTERS GETAL KIESERS	SPLIT VD VERDEELDE SD
11071066	HLATIKHULU SENIOR PRIMARY SCHOOL	180	
11071808	MSOMBOVU PRE-SCHOOL	205	
11070559	RODANA JUNIOR SECONDARY SCHOOL	620	
11070560	FEZEKILE JUNIOR SECONDARY SCHOOL	639	
11070818	KOLONGA JUNIOR SECONDARY SCHOOL	306	
11070548	NQININGANE JUNIOR SECONDARY SCHOOL	392	
11071819	TEMPORARY VOTING STATION (QITHI TENT SITE)	206	
11071011	MPOTULO JUNIOR SECONDARY SCHOOL	272	
11071022	TSOLOKAZI JUNIOR SECONDARY SCHOOL	163	
11070571	RWANTSANA JUNIOR SECONDARY SCHOOL	595	

**Ward 2** comprises of a total of 3374 registered voters.  
**Wyk 2** bestaan uit 'n totaal van 3374 geregistreerde kiesers.  
 MIN VOTERS/KIESER 3015 NORM 3547 MAX VOTERS/KIESER 4079

VOTING DISTRICT No. STEMDISTRIK No.	VOTING STATION NAME STEMLOKAAL NAAM	NUMBER OF VOTERS GETAL KIESERS	SPLIT VD VERDEELDE SD
11070784	NJOMBELA JUNIOR SECONDARY SCHOOL	411	
11070964	LUQOLO JUNIOR SECONDARY SCHOOL	146	
11071763	TEMPORARY VOTING STATION (KWAZOTHE TENT)	298	
11070122	MAQASHU JUNIOR SECONDARY SCHOOL	590	
11070447	QUTHUBENI JUNIOR SECONDARY SCHOOL	508	
11071257	NOZUKO PRIMARY SCHOOL	243	
11070469	ST PETERS ON INDWE	560	
11070458	THAFENI JUNIOR SECONDARY SCHOOL	309	
11070953	LUTUTU JUNIOR SECONDARY SCHOOL	309	

**Ward 3** comprises of a total of 3897 registered voters.  
**Wyk 3** bestaan uit 'n totaal van 3897 geregistreerde kiesers.  
 MIN VOTERS/KIESER 3015 NORM 3547 MAX VOTERS/KIESER 4079

VOTING DISTRICT No. STEMDISTRIK No.	VOTING STATION NAME STEMLOKAAL NAAM	NUMBER OF VOTERS GETAL KIESERS	SPLIT VD VERDEELDE SD
11070706	MAQHUBELA JUNIOR SECONDARY SCHOOL	431	

11070717	GREYSPAN JUNIOR SECONDARY SCHOOL	464
11070728	TABATA JUNIOR SECONDARY SCHOOL	360
11070076	STONICROFT JUNIOR SECONDARY SCHOOL	448
11070144	LOWER NDONGA SCHOOL	533
11070324	TEMBANI SENIOR PRIMARY SCHOOL	123
11070830	NOMPUMELELO JUNIOR SECONDARY SCHOOL	463
11071280	MADWALENI JUNIOR SECONDARY SCHOOL	284
11070313	NTLALONTLE JUNIOR SECONDARY SCHOOL	469
11070739	RV MANELI JUNIOR SECONDARY SCHOOL	322

**Ward 4 comprises of a total of 3450 registered voters.**

**Wyk 4 bestaan uit 'n totaal van 3450 geregistreerde kiesers.**

MIN VOTERS/KIESER 3015

NORM 3547

MAX VOTERS/KIESER 4079

VOTING DISTRICT No. STEMDISTRIK No.	VOTING STATION NAME STEMLOKAAL NAAM	NUMBER OF VOTERS GETAL KIESERS	SPLIT VD VERDEELDE SD
11070436	BAKANINI SENIOR PRIMARY SCHOOL	374	
11070942	CACADU SENIOR SECONDARY SCHOOL	537	
11000024	LADY FRERE TOWN HALL	1254	
11071213	LADY FRERE STADIUM.	384	
11000013	NOMPUCUKO SENIOR PRIMARY SCHOOL	901	

**Ward 5 comprises of a total of 3996 registered voters.**

**Wyk 5 bestaan uit 'n totaal van 3996 geregistreerde kiesers.**

MIN VOTERS/KIESER 3015

NORM 3547

MAX VOTERS/KIESER 4079

VOTING DISTRICT No. STEMDISTRIK No.	VOTING STATION NAME STEMLOKAAL NAAM	NUMBER OF VOTERS GETAL KIESERS	SPLIT VD VERDEELDE SD
11070616	NOLUTHANDO SCHOOL	570	
11071796	TOPU TENT SITE	203	
11071099	MCKAY'S NEK JUNIOR SECONDARY SCHOOL	377	
11070403	NGANGOMHLABA JUNIOR SECONDARY SCHOOL	581	
11070177	EMZI JUNIOR SECONDARY SCHOOL	409	
11070627	GCINA TRIBAL AUTHORITY HALL	503	
11071190	THREE CROWNS SENIOR PRIMARY SCHOOL	309	
11071202	DE HOOP SCHOOL	251	
11071224	GLEN ADELAIDE JUNIOR SECONDARY SCHOOL	274	
11071347	YONNA JUNIOR SECONDARY SCHOOL	519	

**Ward 6 comprises of a total of 3675 registered voters.**  
**Wyk 6 bestaan uit 'n totaal van 3675 geregistreerde kiesers.**  
 MIN VOTERS/KIESER 3015 NORM 3547 MAX VOTERS/KIESER 4079

VOTING DISTRICT No. STEMDISTRIK No.	VOTING STATION NAME STEMLOKAAL NAAM	NUMBER OF VOTERS GETAL KIESERS	SPLIT VD VERDEELDE SD
11070740	EMAZIMENI JUNIOR SECONDARY SCHOOL	343	
11071730	ROMAN CATHOLIC CHURCH HALL	211	
11070874	KUNDULU JUNIOR SECONDARY SCHOOL	334	
11071077	GQEBENYA JUNIOR SECONDARY SCHOOL	523	
11071088	TEMPORARY VOTING STATION (GANDO TENT)	163	
11071178	NONESI SENIOR PRIMARY SCHOOL	218	
11070863	MTIRARA SENIOR SECONDARY SCHOOL	321	
11070065	TEMBENI SENIOR PRIMARY SCHOOL	316	
11070593	VULINDLELA SENIOR SECONDARY SCHOOL	314	
11070245	XONXA JUNIOR SECONDARY SCHOOL	346	
11070582	MATYANTYA JUNIOR SECONDARY SCHOOL	586	

**Ward 7 comprises of a total of 3873 registered voters.**  
**Wyk 7 bestaan uit 'n totaal van 3873 geregistreerde kiesers.**  
 MIN VOTERS/KIESER 3015 NORM 3547 MAX VOTERS/KIESER 4079

VOTING DISTRICT No. STEMDISTRIK No.	VOTING STATION NAME STEMLOKAAL NAAM	NUMBER OF VOTERS GETAL KIESERS	SPLIT VD VERDEELDE SD
11071123	PHAKAMISA SENIOR PRIMARY SCHOOL	212	
11070896	BOWDEN JUNIOR SECONDARY SCHOOL	254	
11071741	PHUMELELA SENIOR SECONDARY SCHOOL	140	
11070199	MAQWATHINI JUNIOR SECONDARY SCHOOL	618	
11071101	FUNDA SENIOR PRIMARY SCHOOL	173	
11071167	BOZWANA JUNIOR SECONDARY SCHOOL	550	
11070302	MNIKINA JUNIOR SECONDARY SCHOOL	332	
11070605	QOQODALA JUNIOR SECONDARY SCHOOL	283	
11071156	EDENDALE JUNIOR SECONDARY SCHOOL	265	
11071134	VUYOLWETHU SENIOR PRIMARY SCHOOL	178	
11071112	AFRICAN NATIVE CHURCH	205	
11070638	QOQODALA COMMUNITY HALL	663	



<b>Ward 8</b>	<b>comprises of a total of 3776</b>	<b>registered voters.</b>
<b>Wyk 8</b>	<b>bestaan uit 'n totaal van 3776</b>	<b>geregistreerde kiesers.</b>
<b>MIN VOTERS/KIESER</b>	<b>3015</b>	<b>NORM 3547</b>
		<b>MAX VOTERS/KIESER 4079</b>

<b>VOTING DISTRICT No.</b>	<b>VOTING STATION NAME</b>	<b>NUMBER OF VOTERS</b>	<b>SPLIT VD</b>
<b>STEMDISTRIK No.</b>	<b>STEMLOKAAL NAAM</b>	<b>GETAL KIESERS</b>	<b>VERDEELDE SD</b>
11070133	QHUGQWARHU JUNIOR SECONDARY SCHOOL	400	
11070212	BHOQO JUNIOR SECONDARY SCHOOL	328	
11070256	MZAMOMHLE JOJO JUNIOR SECONDARY SCHOOL	458	
11071381	SIYAKONWABA SENIOR PRIMARY SCHOOL	164	
11070188	NTSONKOTHA SENIOR SECONDARY SCHOOL	397	
11071392	IMIZAMOYETHU PRE-SCHOOL	203	
11071471	ZWELETHEMBA PRE-SCHOOL	198	
11070649	UPPER NGONYAMA PRIMARY SCHOOL	417	
11070807	ETHIOPIAN C.C. OF SOUTH AFRICA	483	
11071459	IKAMVA JUNIOR PRIMARY SCHOOL	353	
11071448	SINOXOLO SHEARING SHED.	205	
11071369	VAALBANK COMMUNITY HALL	170	

<b>Ward 9</b>	<b>comprises of a total of 3781</b>	<b>registered voters.</b>
<b>Wyk 9</b>	<b>bestaan uit 'n totaal van 3781</b>	<b>geregistreerde kiesers.</b>
<b>MIN VOTERS/KIESER</b>	<b>3015</b>	<b>NORM 3547</b>
		<b>MAX VOTERS/KIESER 4079</b>

<b>VOTING DISTRICT No.</b>	<b>VOTING STATION NAME</b>	<b>NUMBER OF VOTERS</b>	<b>SPLIT VD</b>
<b>STEMDISTRIK No.</b>	<b>STEMLOKAAL NAAM</b>	<b>GETAL KIESERS</b>	<b>VERDEELDE SD</b>
11071482	ESIDWADWENI JUNIOR SECONDARY SCHOOL	300	
11071583	DALIBUZWE SENIOR PRIMARY SCHOOL	260	
11071774	EMDENI JUNIOR SECONDARY SCHOOL	286	
11071505	THOZAMISA HIGH SCHOOL	525	
11070290	VAAL BANK JUNIOR SECONDARY SCHOOL	599	
11071561	SIZAMILE SENIOR PRIMARY SCHOOL	273	
11071594	LAPHUMILANGA SENIOR PRIMARY SCHOOL	112	
11070908	NOZALA JUNIOR SECONDARY SCHOOL	359	
11070335	DUM DUM SENIOR PRIMARY SCHOOL	437	
11071404	BHADI PRE-SCHOOL	224	
11070289	PHUMLANI SENIOR SECONDARY SCHOOL	406	

**Ward 10** comprises of a total of 3246 registered voters.  
**Wyk 10** bestaan uit 'n totaal van 3246 geregistreerde kiesers.  
 MIN VOTERS/KIESER 3015 NORM 3547 MAX VOTERS/KIESER 4079

VOTING DISTRICT No. STEMDISTRIK No.	VOTING STATION NAME STEMLOKAAL NAAM	NUMBER OF VOTERS GETAL KIESERS	SPLIT VD VERDEELDE SD
11071550	HELUSHE JUNIOR PRIMARY SCHOOL	245	
11071549	ZIZAMELE SENIOR PRIMARY SCHOOL	328	
11071426	NYINGA TENT	79	
11071415	NDIMANGENI JUNIOR SECONDARY SCHOOL	380	
11071437	TSAWULAYO SENIOR PRIMARY SCHOOL	328	
11070010	TSEMBEYI JUNIOR SECONDARY SCHOOL	290	
11070155	BHANKISI JUNIOR SECONDARY SCHOOL	508	
11070166	ZAMICEBO JUNIOR PRIMARY SCHOOL	436	
11070852	MCWANGELE JUNIOR SECONDARY SCHOOL	371	
11450023	WILLOW PARK FARM BUILDING	64	
11070032	KOMANAS JUIOR SECONDARY SCHOOL	217	

**Ward 11** comprises of a total of 3599 registered voters.  
**Wyk 11** bestaan uit 'n totaal van 3599 geregistreerde kiesers.  
 MIN VOTERS/KIESER 3015 NORM 3547 MAX VOTERS/KIESER 4079

VOTING DISTRICT No. STEMDISTRIK No.	VOTING STATION NAME STEMLOKAAL NAAM	NUMBER OF VOTERS GETAL KIESERS	SPLIT VD VERDEELDE SD
11240042	TEMPORARY VOTING STATION (TYOKSVILLE)	1025	
11240053	HARRY GWALA TENT	1057	
11240031	MUNNIKVILLE	744	
11240020	MIKE HUNA HALL	773	

**Ward 12** comprises of a total of 3434 registered voters.  
**Wyk 12** bestaan uit 'n totaal van 3434 geregistreerde kiesers.  
 MIN VOTERS/KIESER 3015 NORM 3547 MAX VOTERS/KIESER 4079

VOTING DISTRICT No. STEMDISTRIK No.	VOTING STATION NAME STEMLOKAAL NAAM	NUMBER OF VOTERS GETAL KIESERS	SPLIT VD VERDEELDE SD
11071336	LITTLE FIRE PRE-SCHOOL	156	
11070661	MKAPUSI JUNIOR SECONDARY SCHOOL	214	
11070885	NGQANDA JUNIOR SECONDARY SCHOOL	321	
11070650	LUXA JUNIOR SECONDARY SCHOOL	457	
11070267	QWEMPE JUNIOR SECONDARY SCHOOL	458	

11070278	BOMENI JUNIOR SECONDARY SCHOOL	275
11071314	TEMPORARY VOTING STATION (NGXINGWENI TENT)	140
11071303	EMTUNZINI JUNIOR PRIMARY SCHOOL	403
11071752	ZUBAS DALE SENIOR PRIMARY SCHOOL	322
11070201	MOUNT ARTHUR JUNIOR SECONDARY SCHOOL	410
11071325	NCALUKENI JUNIOR PRIMARY SCHOOL	278

**Ward 13** comprises of a total of 3029 registered voters.  
**Wyk 13** bestaan uit 'n totaal van 3029 geregistreerde kiesers.  
**MIN VOTERS/KIESER** 3015 **NORM** 3547 **MAX VOTERS/KIESER** 4079

VOTING DISTRICT No. STEMDISTRIK No.	VOTING STATION NAME STEMLOKAAL NAAM	NUMBER OF VOTERS GETAL KIESERS	SPLIT VD VERDEELDE SD
11071684	MBOLOMPENI TRIBAL HALL	275	
11070672	DYOBUDAKA JUNIOR SECONDARY SCHOOL	272	
11070694	NONKQUBELA SENIOR SECONDARY SCHOOL	373	
11071640	BOOMPLAAS COMMUNITY HALL	270	
11071651	MASIBAMBANE PRE-SCHOOL	137	
11070391	ST CEPRIANS SCHOOL	260	
11070234	PLATKOP SCHOOL	252	
11070368	NOKWAZI JUNIOR SECONDARY SCHOOL	336	
11071820	MZAMOMHLE SCHOOL	211	
11070931	JAHO'S GLEN JUNIOR SECONDARY SCHOOL	390	
11071662	JULLIUS MBALO JUNIOR SECONDARY SCHOOL	253	

**Ward 14** comprises of a total of 3181 registered voters.  
**Wyk 14** bestaan uit 'n totaal van 3181 geregistreerde kiesers.  
**MIN VOTERS/KIESER** 3015 **NORM** 3547 **MAX VOTERS/KIESER** 4079

VOTING DISTRICT No. STEMDISTRIK No.	VOTING STATION NAME STEMLOKAAL NAAM	NUMBER OF VOTERS GETAL KIESERS	SPLIT VD VERDEELDE SD
11240086	ANAKO SENIOR PRIMARY SCHOOL	772	
11071695	PHAKAMANI SENIOR PRIMARY SCHOOL	222	
11240019	DORDRECHT TOWN HALL	668	
11071639	UITKYK JUNIOR SECONDARY SCHOOL	227	
11070683	ST AUGUSTON JUNIOR SECONDARY SCHOOL	357	
11070087	MHLANGA JUNIOR SECONDARY SCHOOL	561	
11070379	BONISWA JUNIOR SECONDARY SCHOOL	328	
11071785	BLAUW KRANTZ FARM	46	

**Ward 15** comprises of a total of 3961 registered voters.  
**Wyk 15** bestaan uit 'n totaal van 3961 geregisteerde kiesers.  
 MIN VOTERS/KIESER 3015 NORM 3547 MAX VOTERS/KIESER 4079

VOTING DISTRICT No. STEMDISTRIK No.	VOTING STATION NAME STEMLOKAAL NAAM	NUMBER OF VOTERS GETAL KIESERS	SPLIT VD VERDEELDE SD
11400051	COLD STREAM FARM SCHOOL	31	
11071831	LUKHANYO SCHOOL	143	
11260044	SIYAKHULA SENIOR PRIMARY SCHOOL	775	
11260033	ESETHU PRIMARY SCHOOL	636	
11260011	LUKHANYO HIGH SCHOOL	1103	
11400028	IDA FARM SCHOOL	318	
11460147	THEMBELIHLE JUNIOR SECONDARY SCHOOL	276	
11460282	MAQWATHINI JUNIOR SECONDARY SCHOOL	314	
11460271	LUPAPASI J.S.S.	229	
11400062	TUNGELA FARM BUILDING	73	
11071291	BULELANI SENIOR PRIMARY SCHOOL	63	

**Ward 16** comprises of a total of 3295 registered voters.  
**Wyk 16** bestaan uit 'n totaal van 3295 geregisteerde kiesers.  
 MIN VOTERS/KIESER 3015 NORM 3547 MAX VOTERS/KIESER 4079

VOTING DISTRICT No. STEMDISTRIK No.	VOTING STATION NAME STEMLOKAAL NAAM	NUMBER OF VOTERS GETAL KIESERS	SPLIT VD VERDEELDE SD
11071628	NGANGAMANZI JUNIOR SECONDARY SCHOOL	395	
11070380	GUBA HOEK SCHOOL	396	
11400017	DORA FOSLO HALL	914	
11260022	TEMPORARY VOTING STATION (EKUPHUMLENI RDP H	576	
11070054	SIZWE JUNIOR SECONDARY SCHOOL	463	
11070919	KANYA JUNIOR SECONDARY SCHOOL	305	
11070920	ABRAHAM VANQA JUNIOR SECONDARY SCHOOL	246	

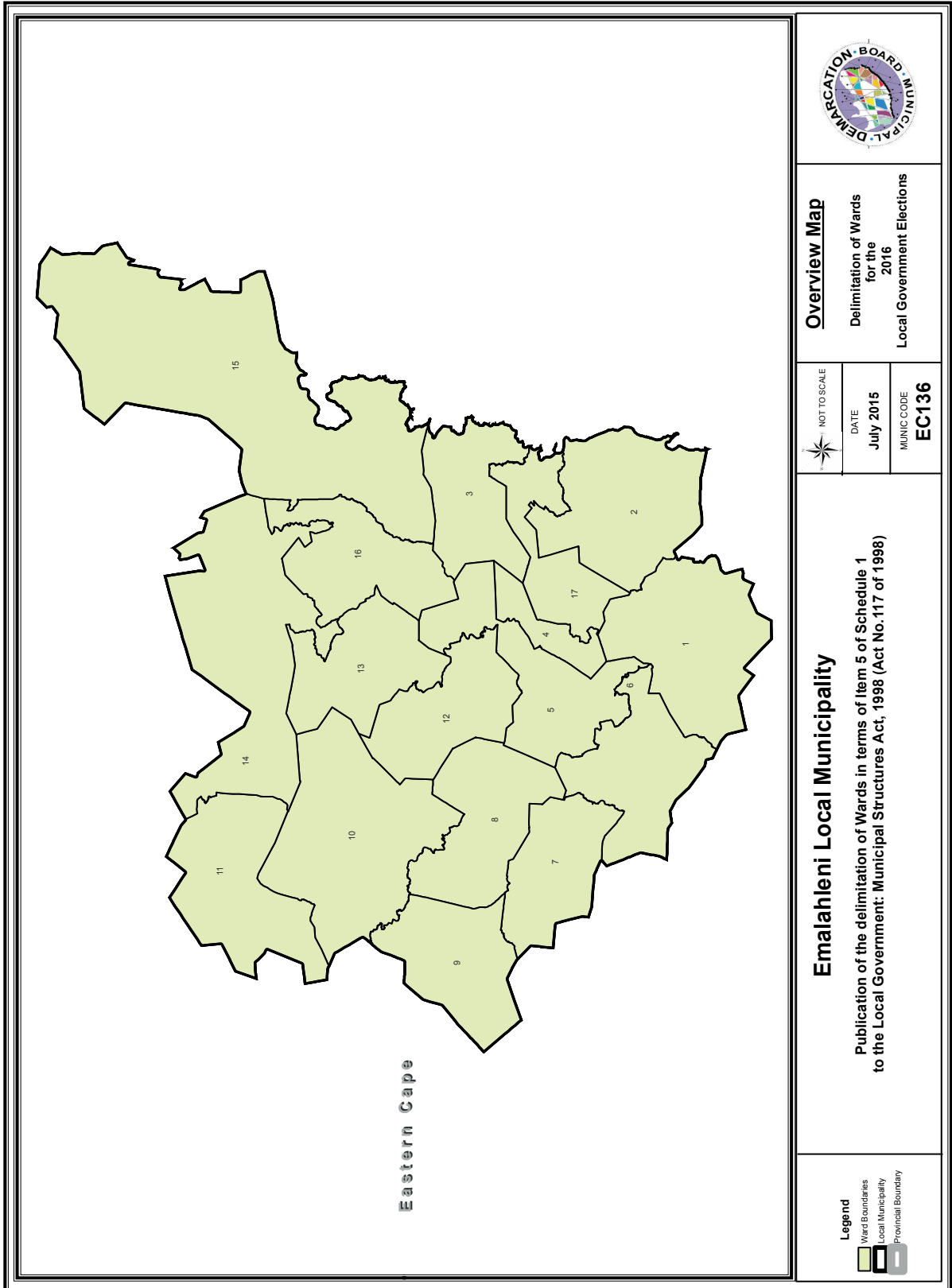
**Ward 17** comprises of a total of 3156 registered voters.  
**Wyk 17** bestaan uit 'n totaal van 3156 geregisteerde kiesers.  
 MIN VOTERS/KIESER 3015 NORM 3547 MAX VOTERS/KIESER 4079

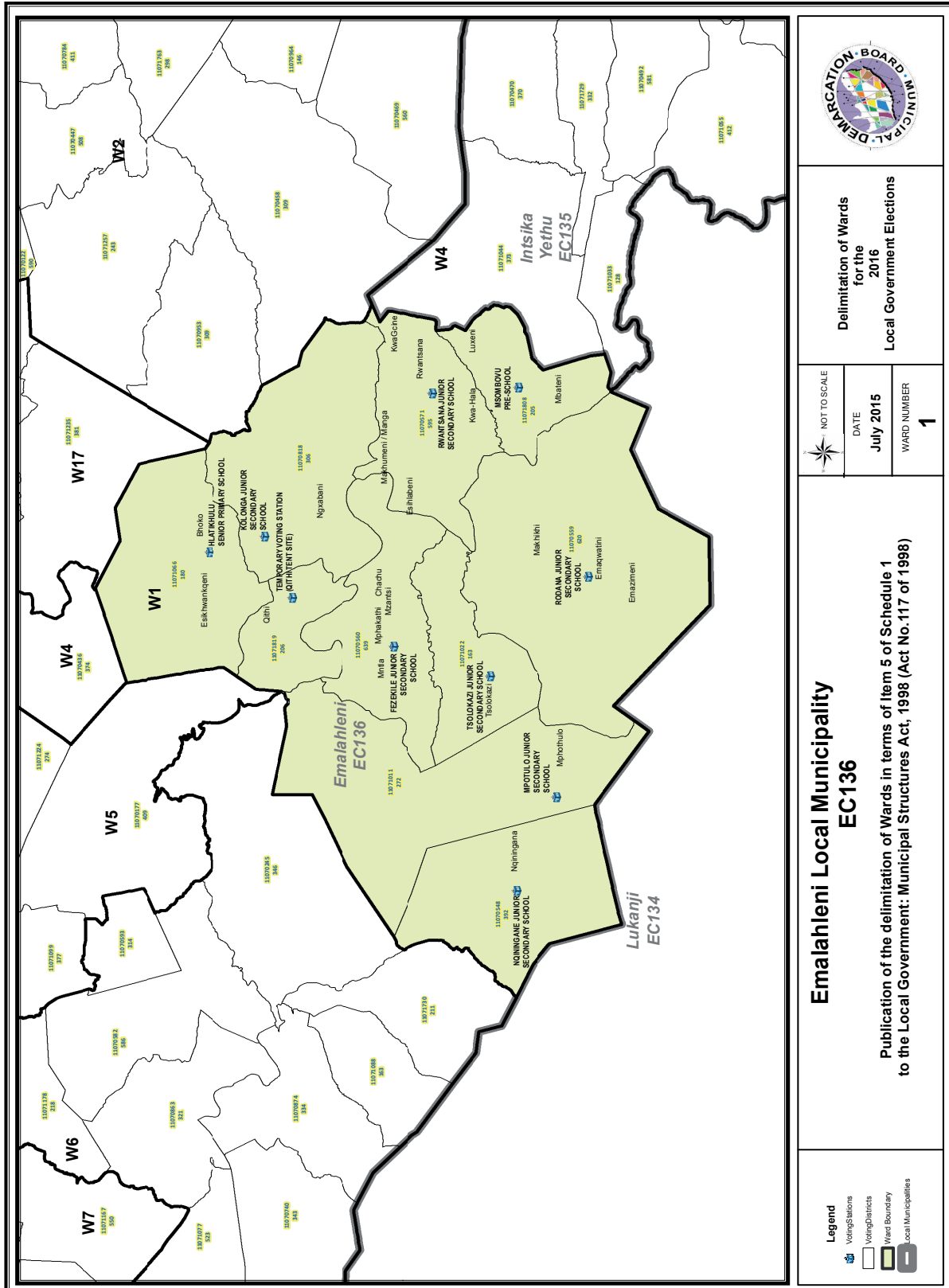
VOTING DISTRICT No. STEMDISTRIK No.	VOTING STATION NAME STEMLOKAAL NAAM	NUMBER OF VOTERS GETAL KIESERS	SPLIT VD VERDEELDE SD
11070841	VALELO JUNIOR SECONDARY SCHOOL	383	
11070414	NOBUHLE JUNIOR SECONDARY SCHOOL	489	

---

11071268	THE ENDTIME MESSAGE CHURCH	499
11070425	NGCUKA JUNIOR SECONDARY SCHOOL	533
11071235	THANDISIZWE SENIOR PRIMARY SCHOOL	381
11070773	BUYOKOYOKO JUNIOR SECONDARY SCHOOL	628
11071718	BINCA PRE-SCHOOL	243

---





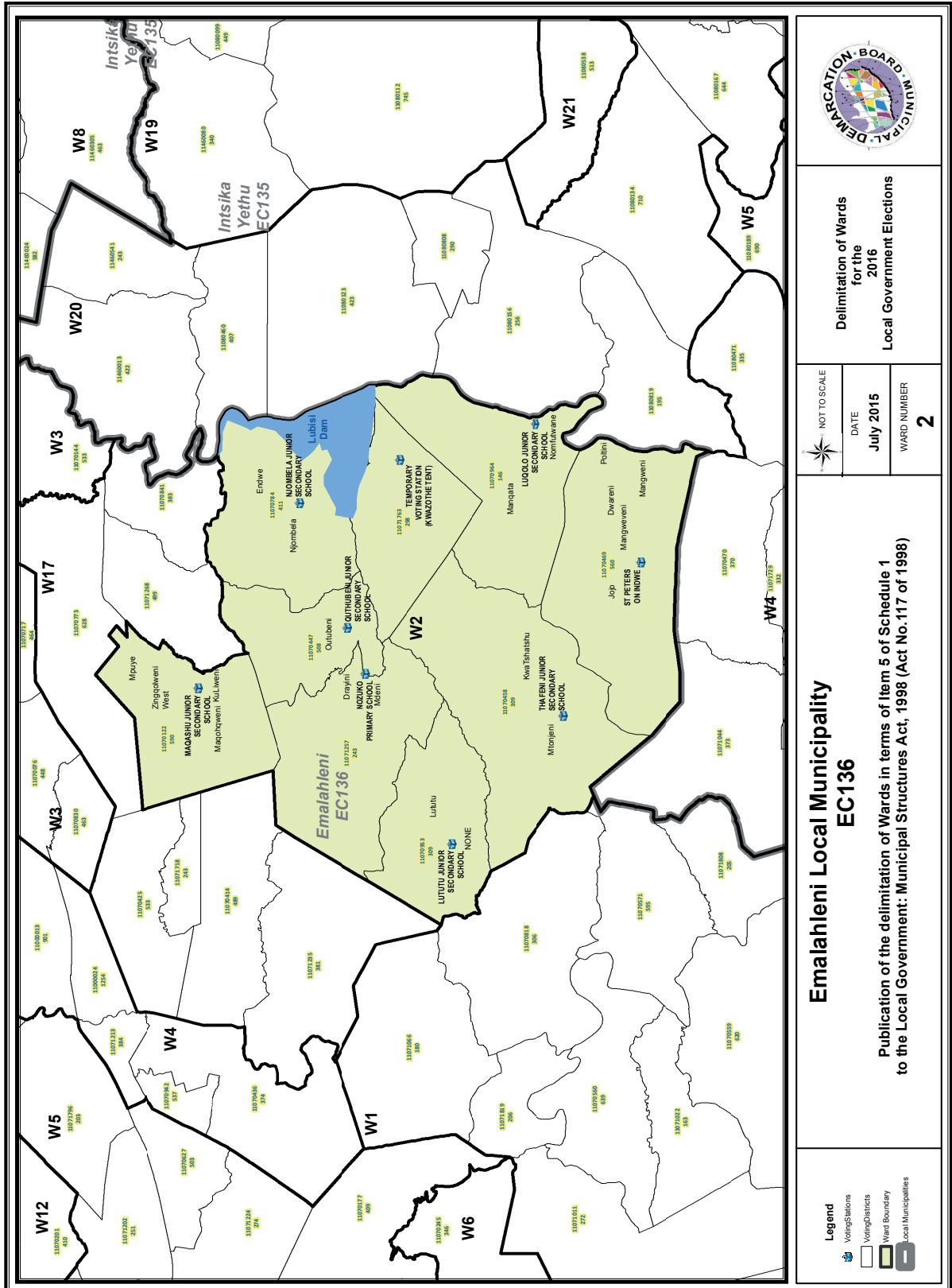
Delimitation of Wards  
for the  
2016  
Local Government Elections

NOT TO SCALE  
DATE  
July 2015  
WARD NUMBER  
1

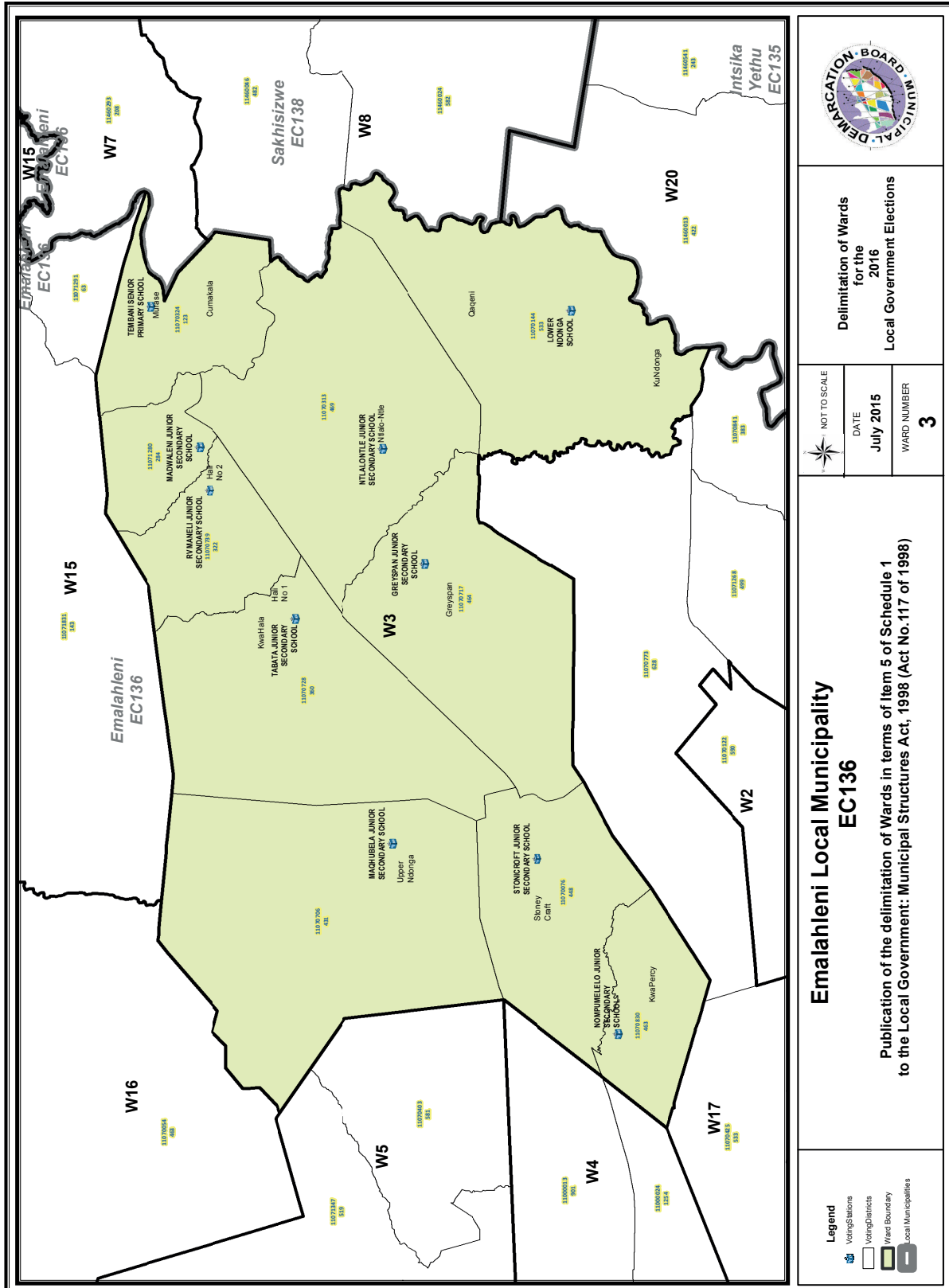
**Emalahleni Local Municipality  
EC136**

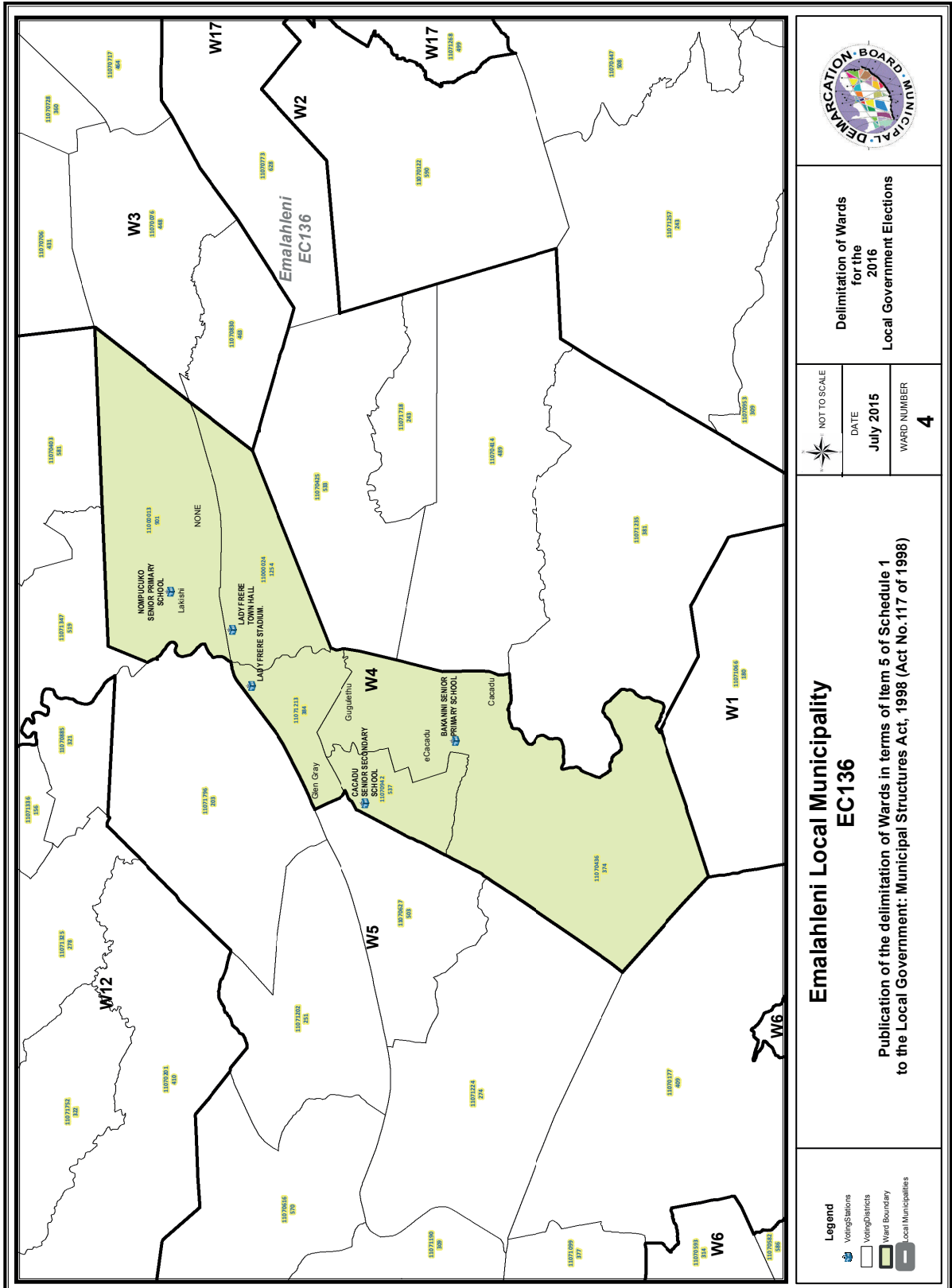
Publication of the delimitation of Wards in terms of Item 5 of Schedule 1  
to the Local Government: Municipal Structures Act, 1998 (Act No.117 of 1998)

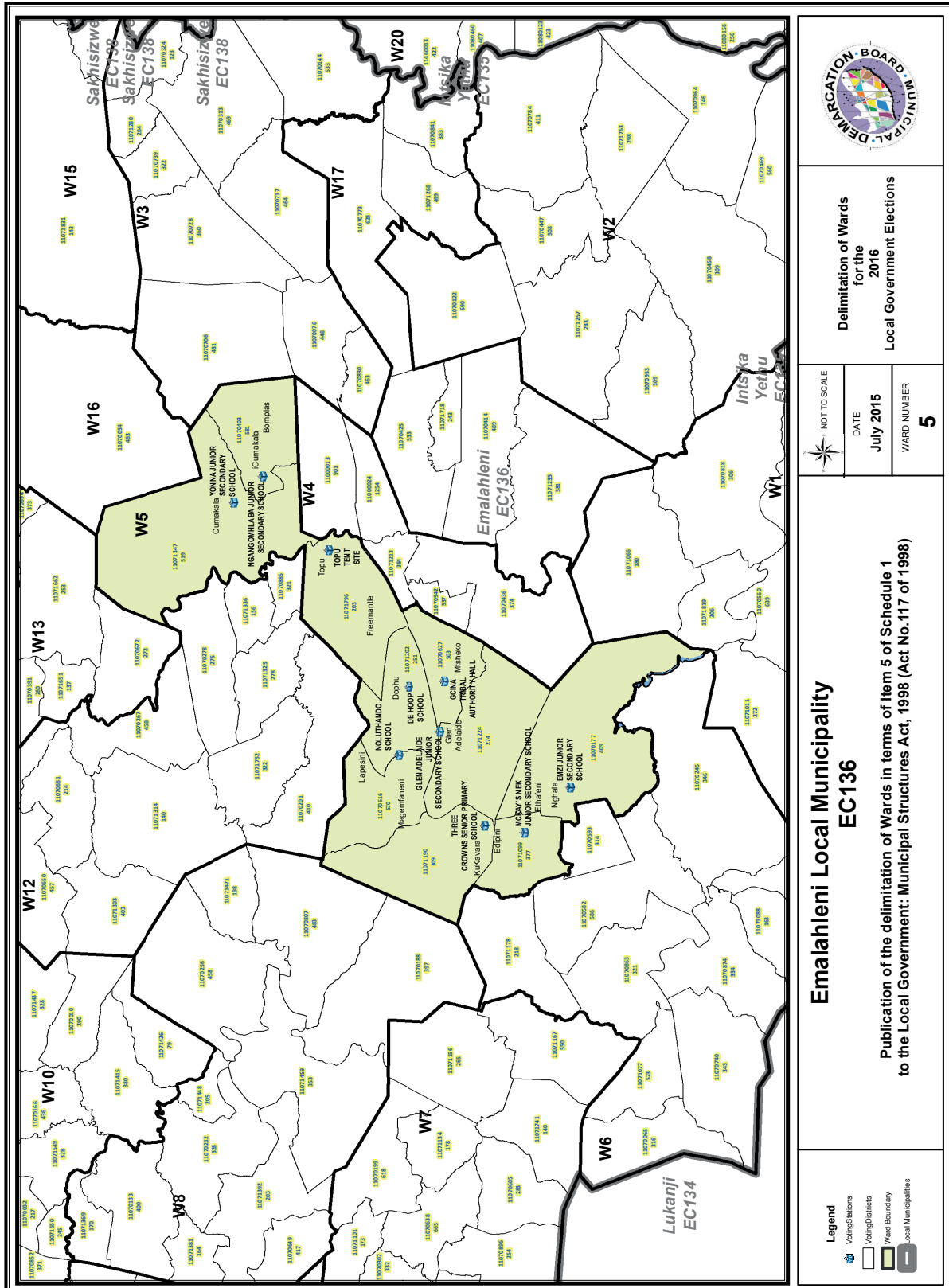
- Legend**
- Voting Stations
  - Voting Districts
  - Ward Boundary
  - Local Municipalities











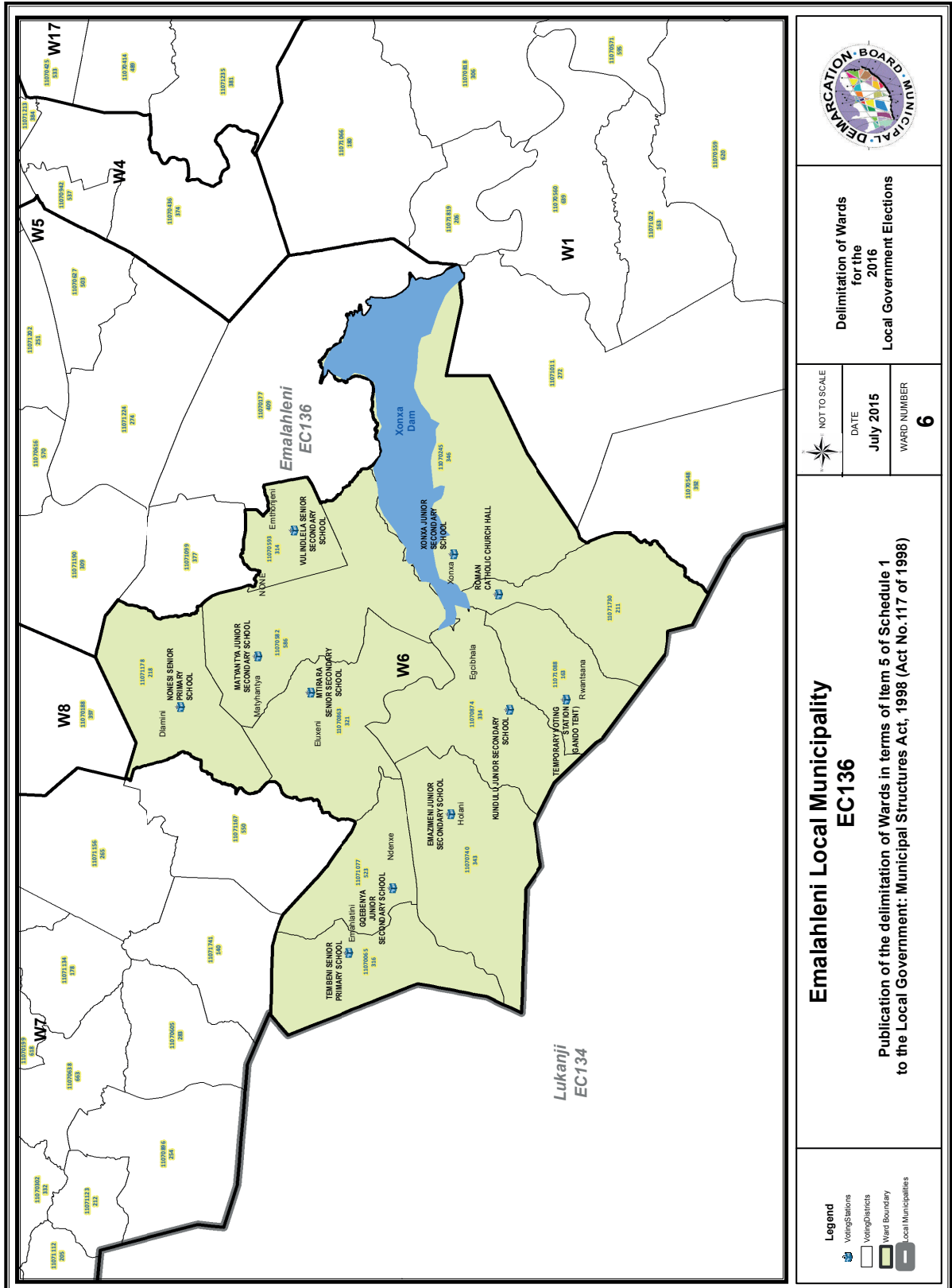
Delimitation of Wards  
for the  
2016  
Local Government Elections

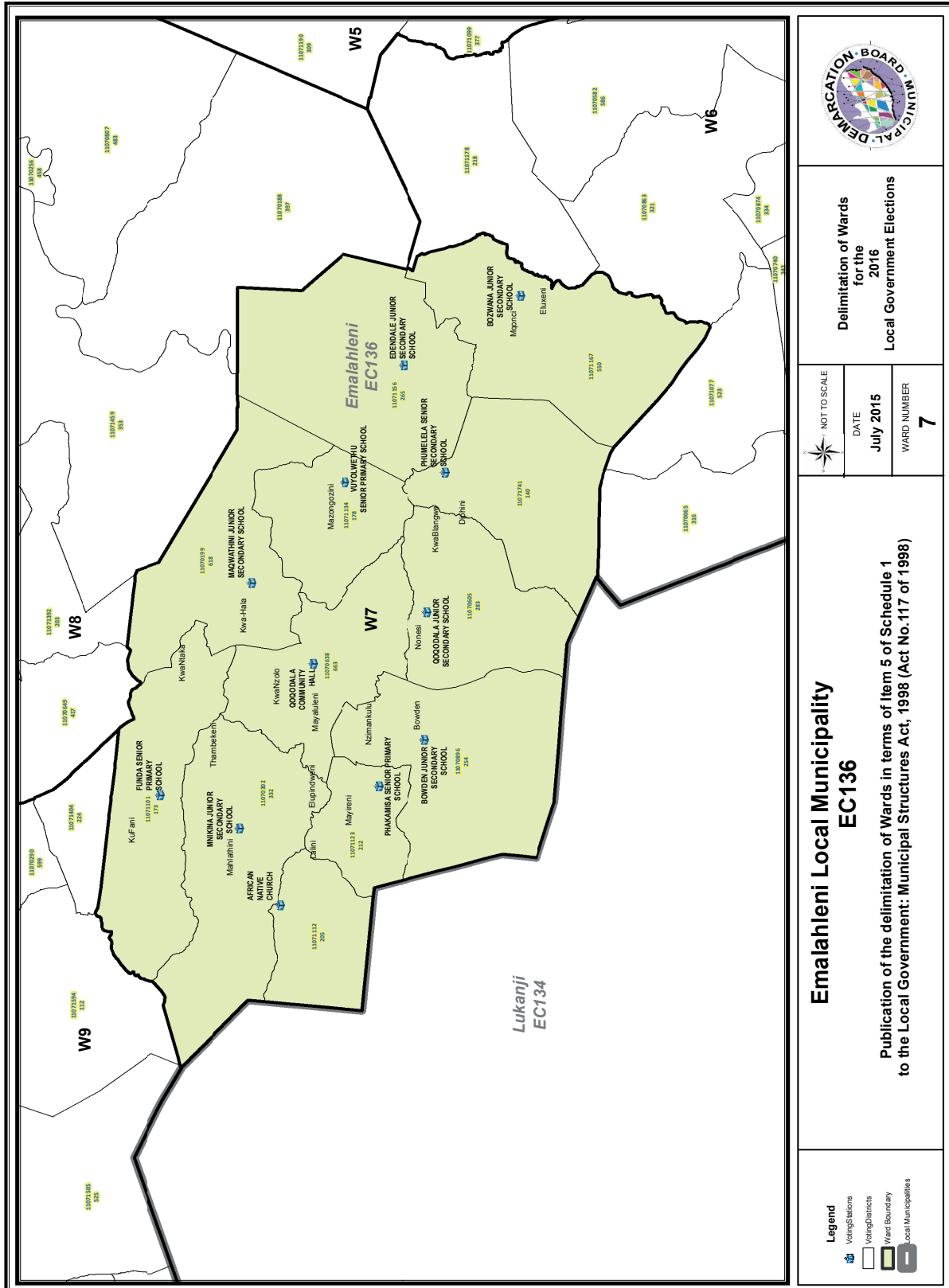
NOT TO SCALE
DATE July 2015
WARD NUMBER 5

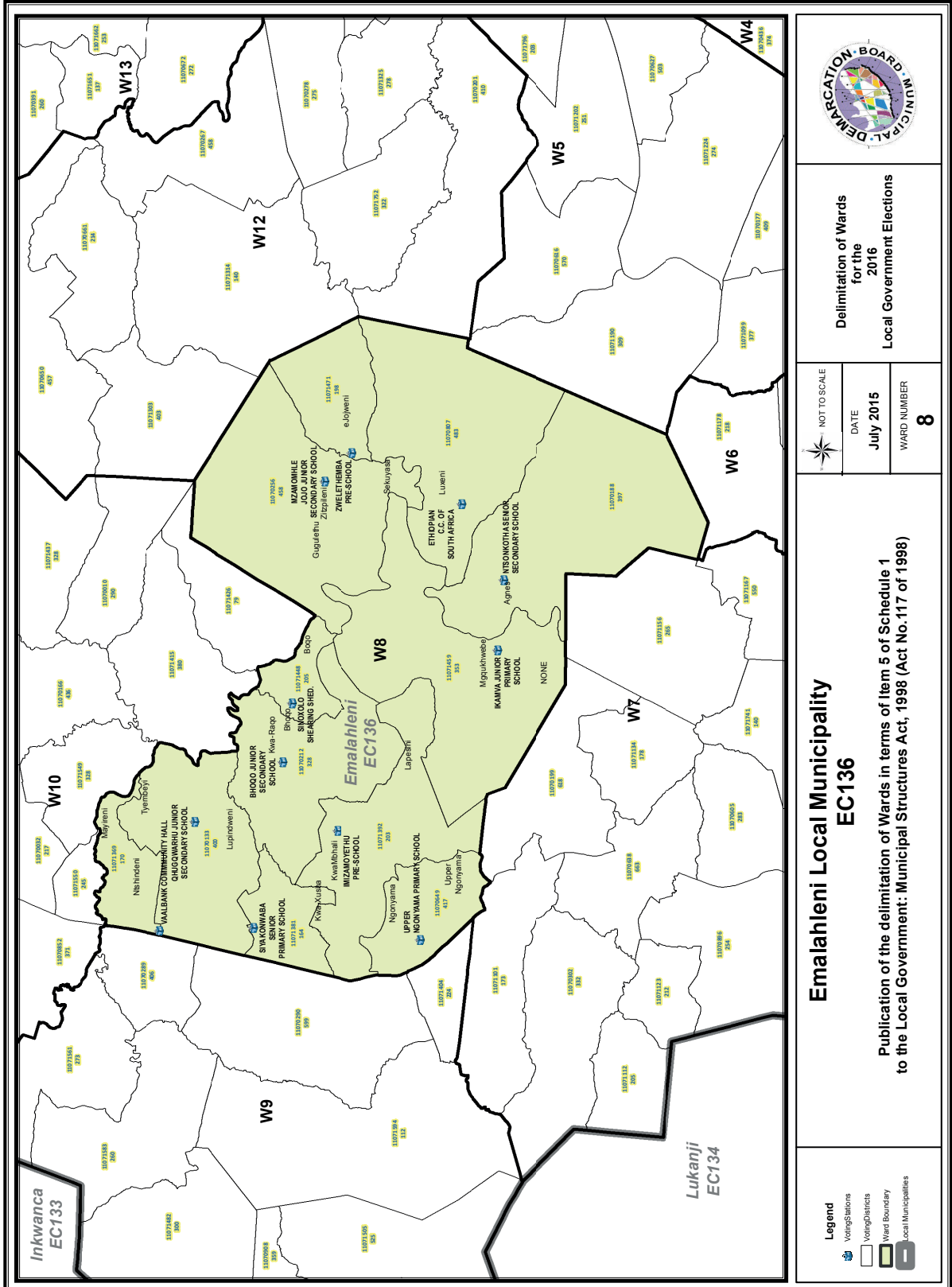
**Emalahleni Local Municipality  
EC136**

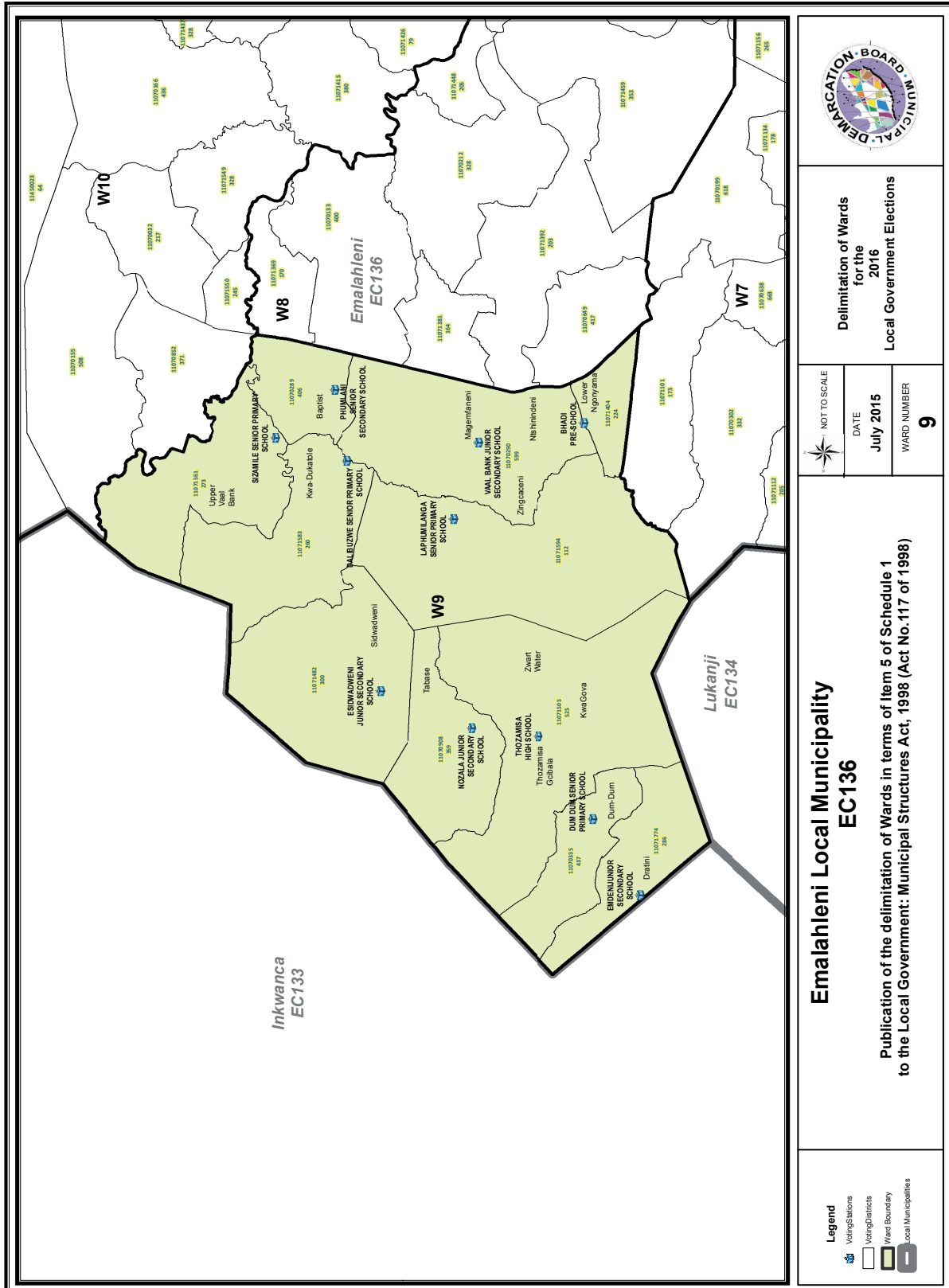
Publication of the delimitation of Wards in terms of Item 5 of Schedule 1  
to the Local Government: Municipal Structures Act, 1998 (Act No.117 of 1998)

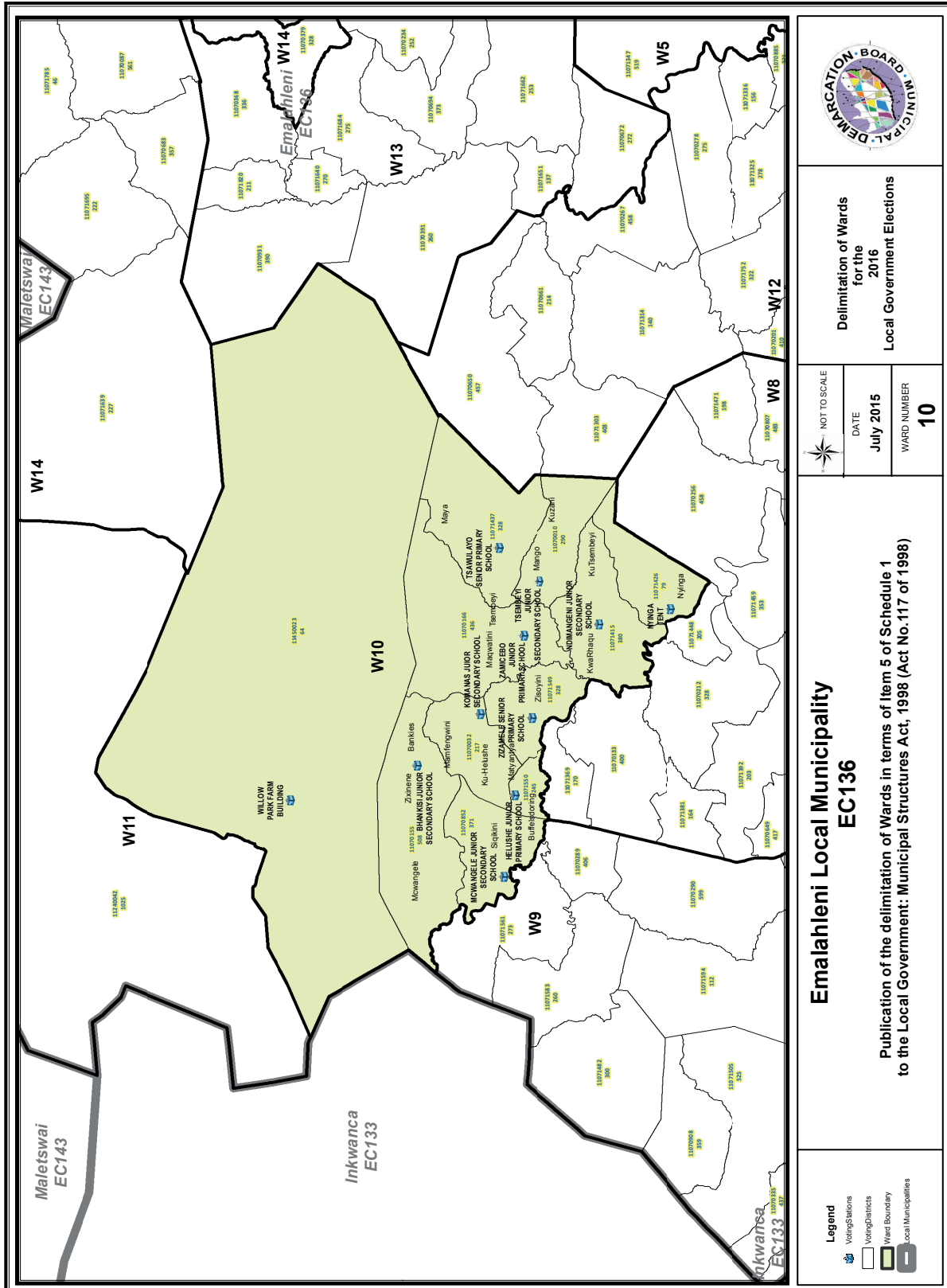
- Legend**
- Voting Stations
  - Voting Districts
  - Ward Boundary
  - Local Municipalities











**Legend**

- Voting Stations
- Voting Districts
- Ward Boundary
- Local Municipalities

NOT TO SCALE

DATE  
**July 2015**

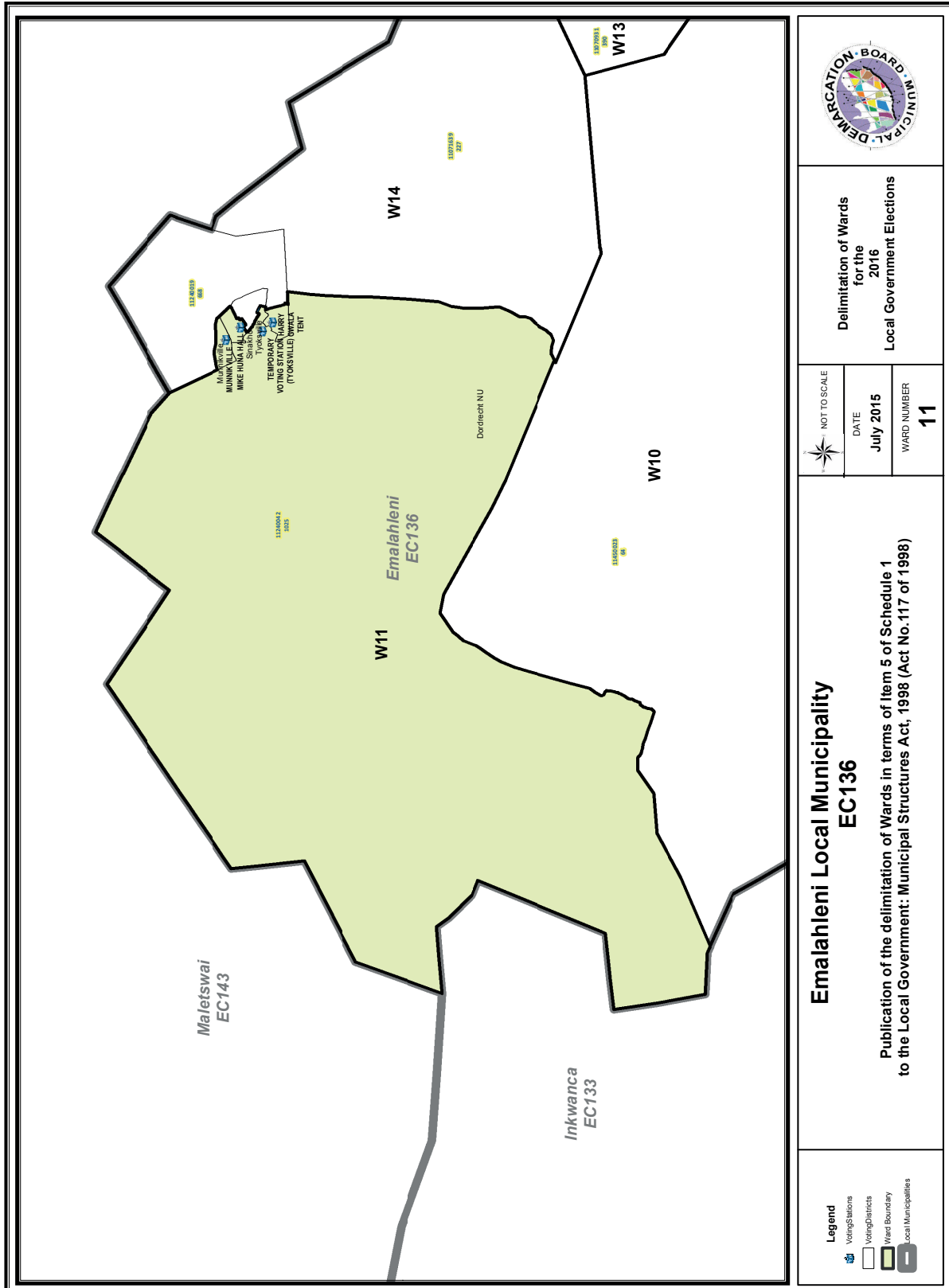
WARD NUMBER  
**10**

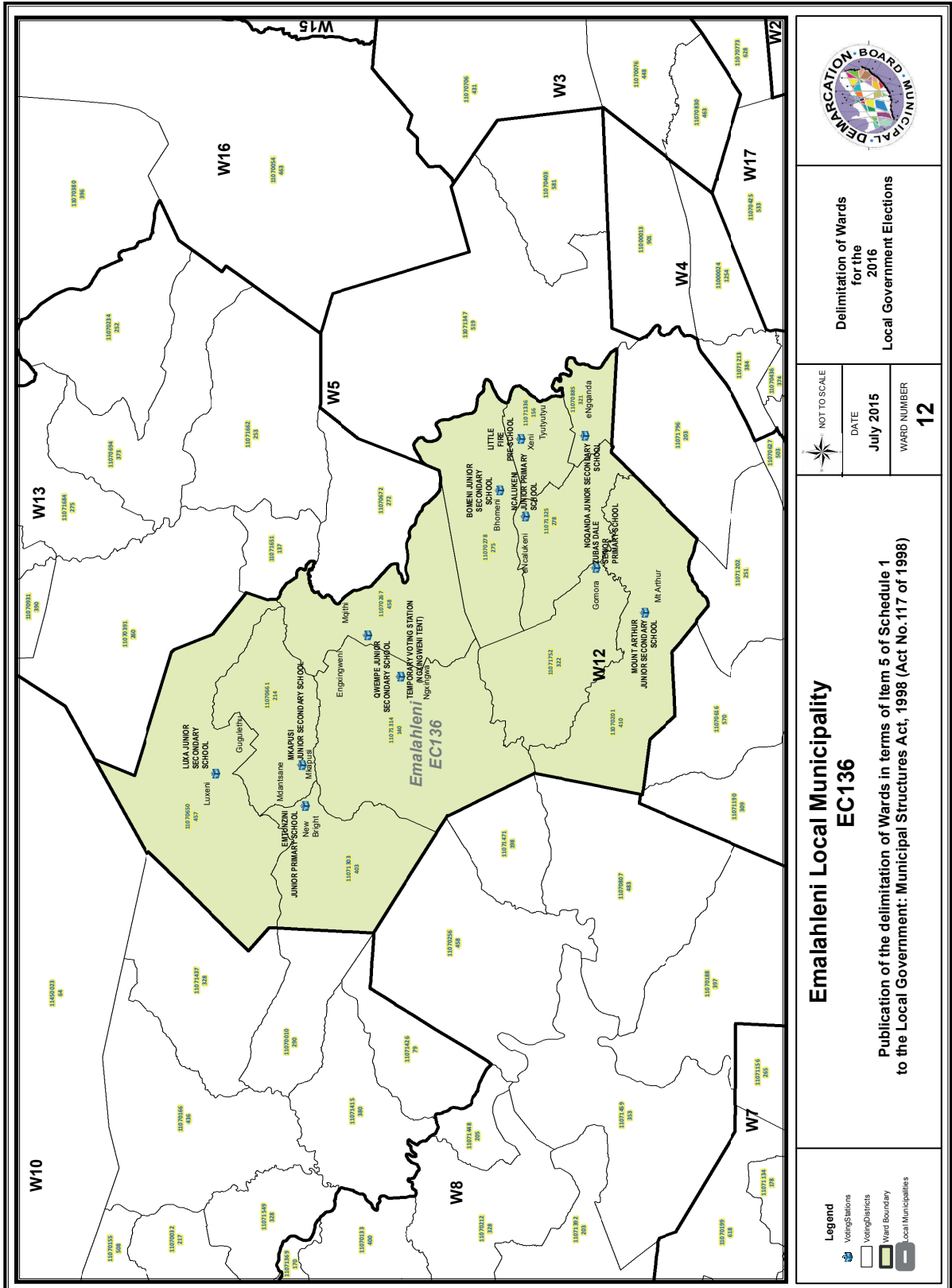
**Delimitation of Wards  
for the  
2016  
Local Government Elections**

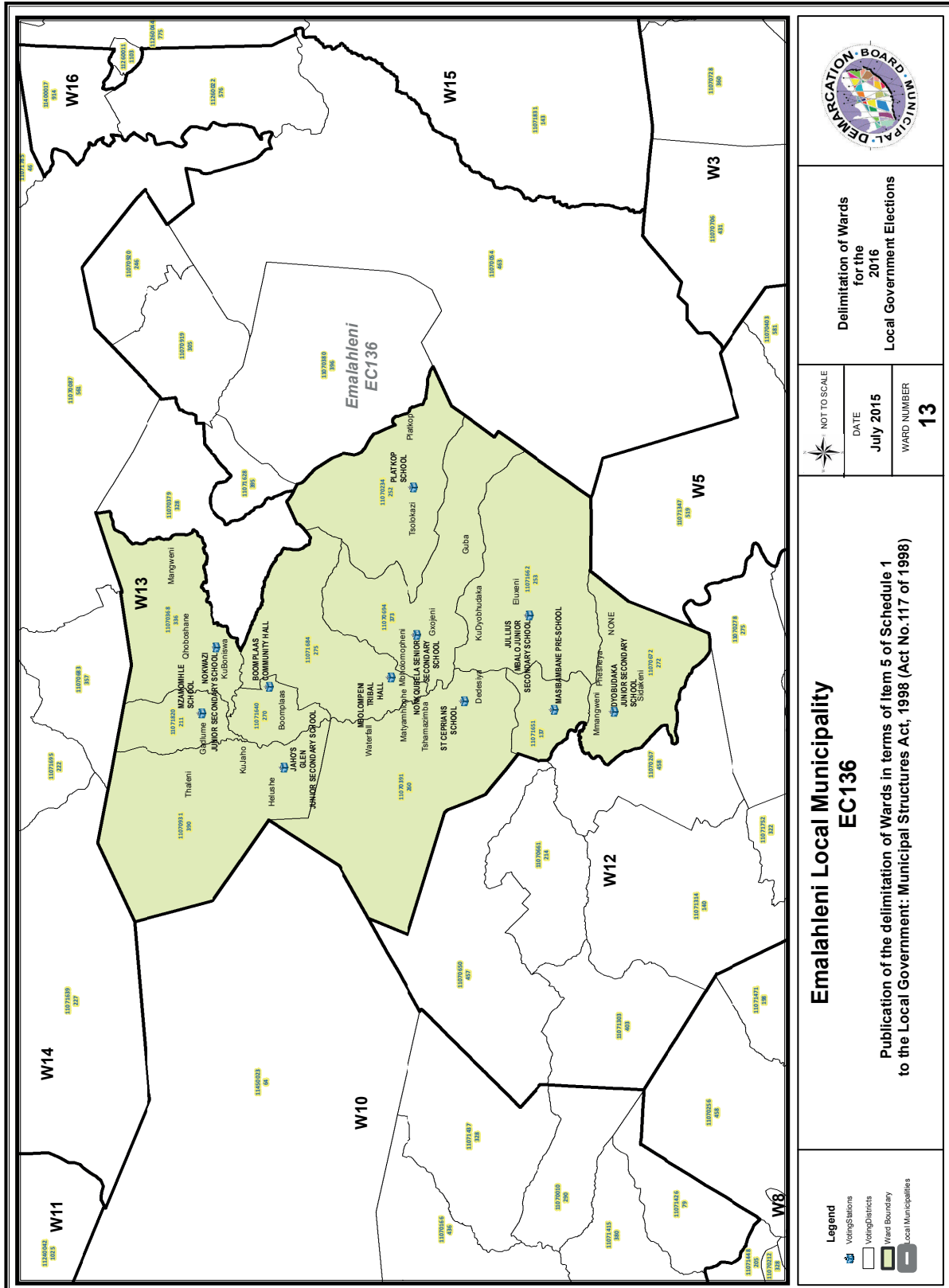
**Emalahleni Local Municipality  
EC136**

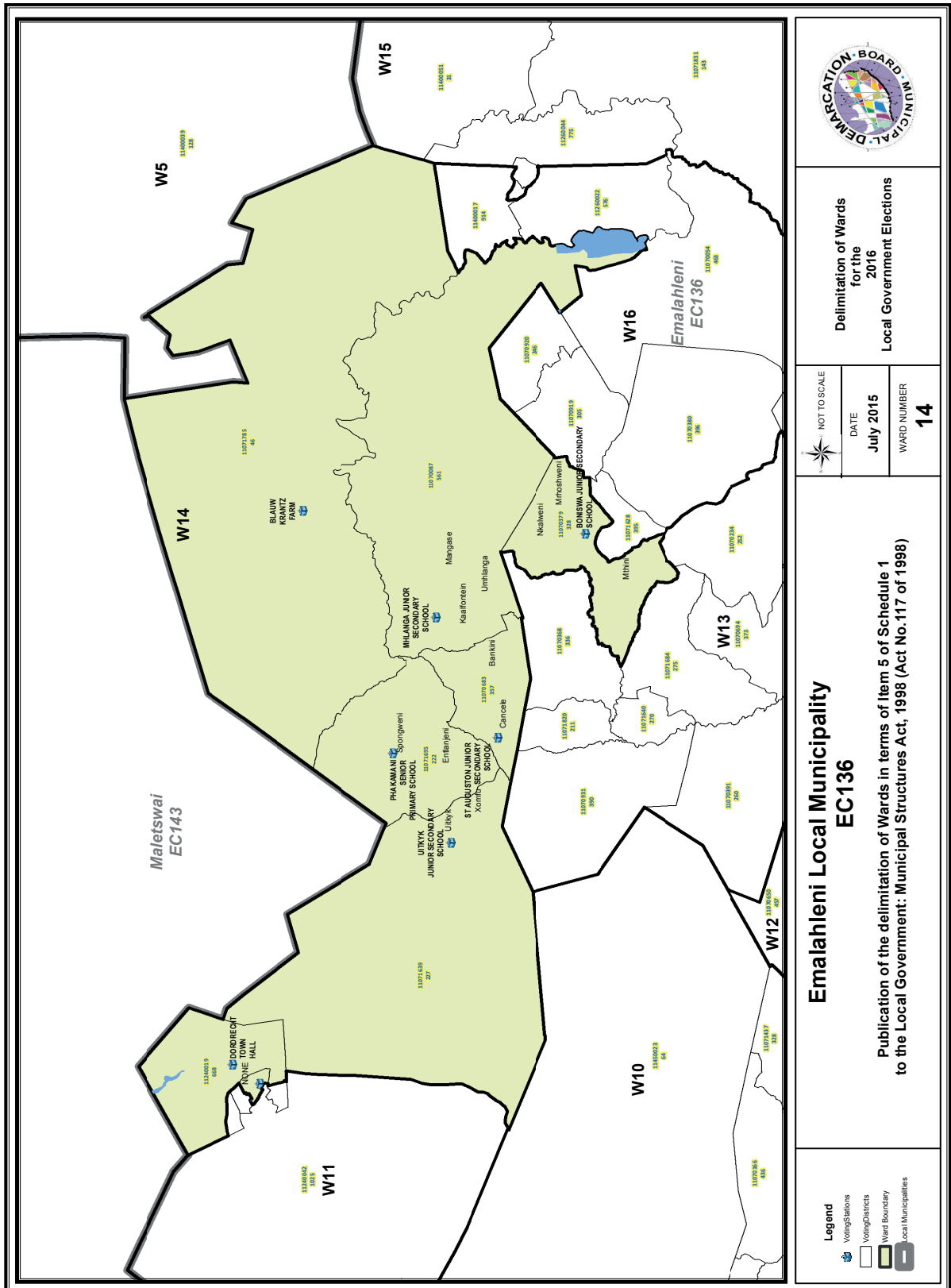
Publication of the delimitation of Wards in terms of Item 5 of Schedule 1  
to the Local Government: Municipal Structures Act, 1998 (Act No.117 of 1998)

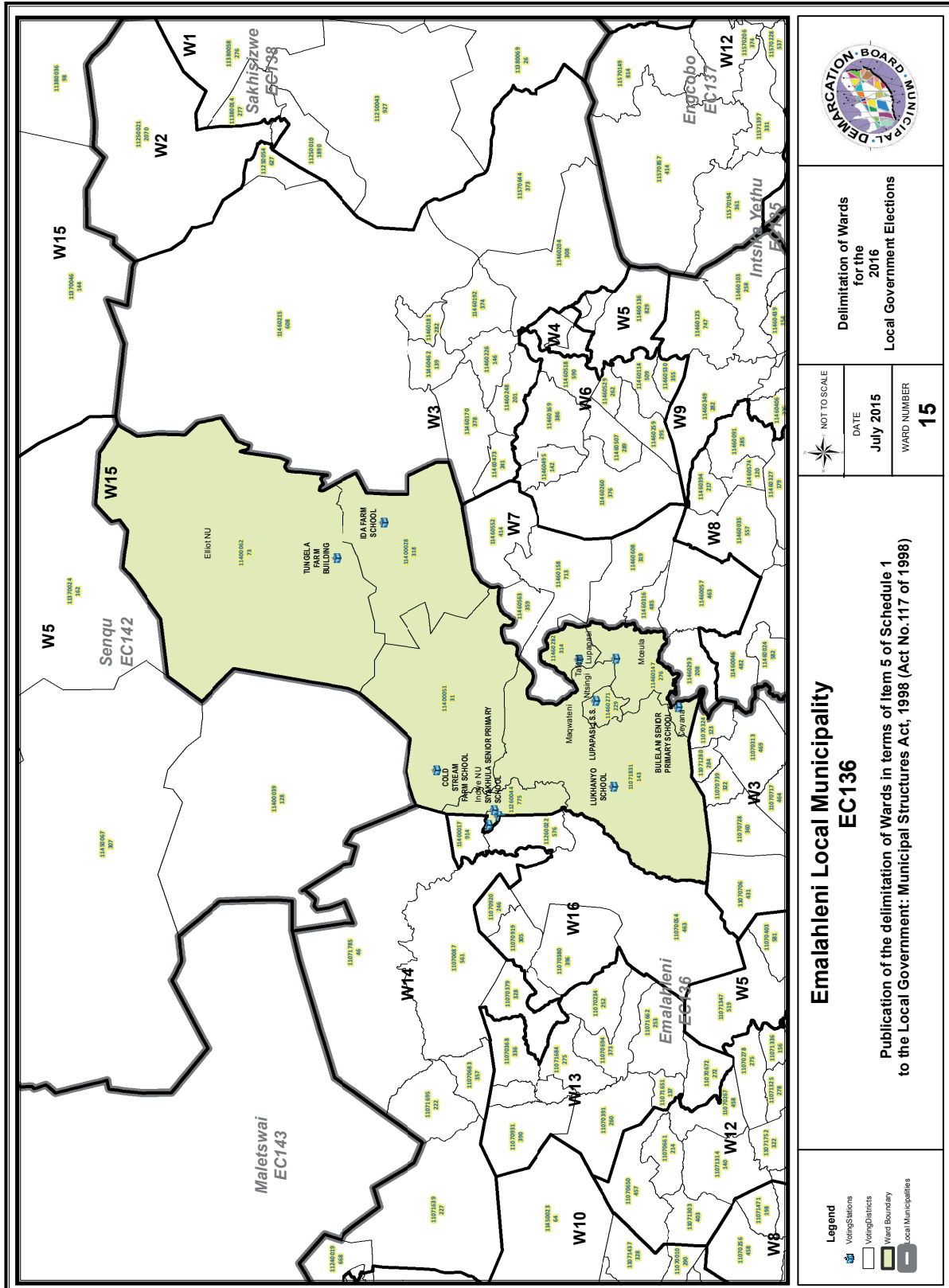


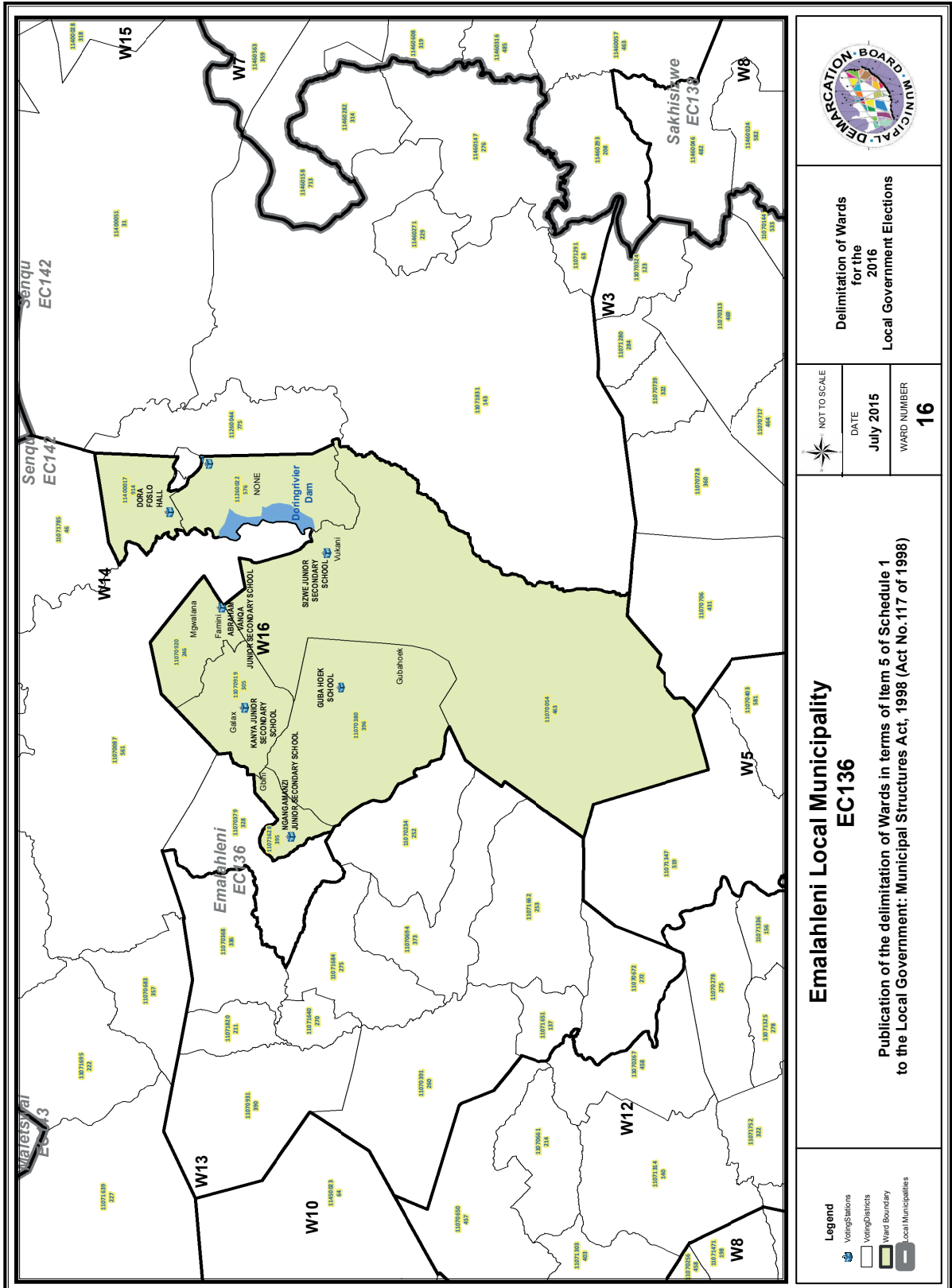


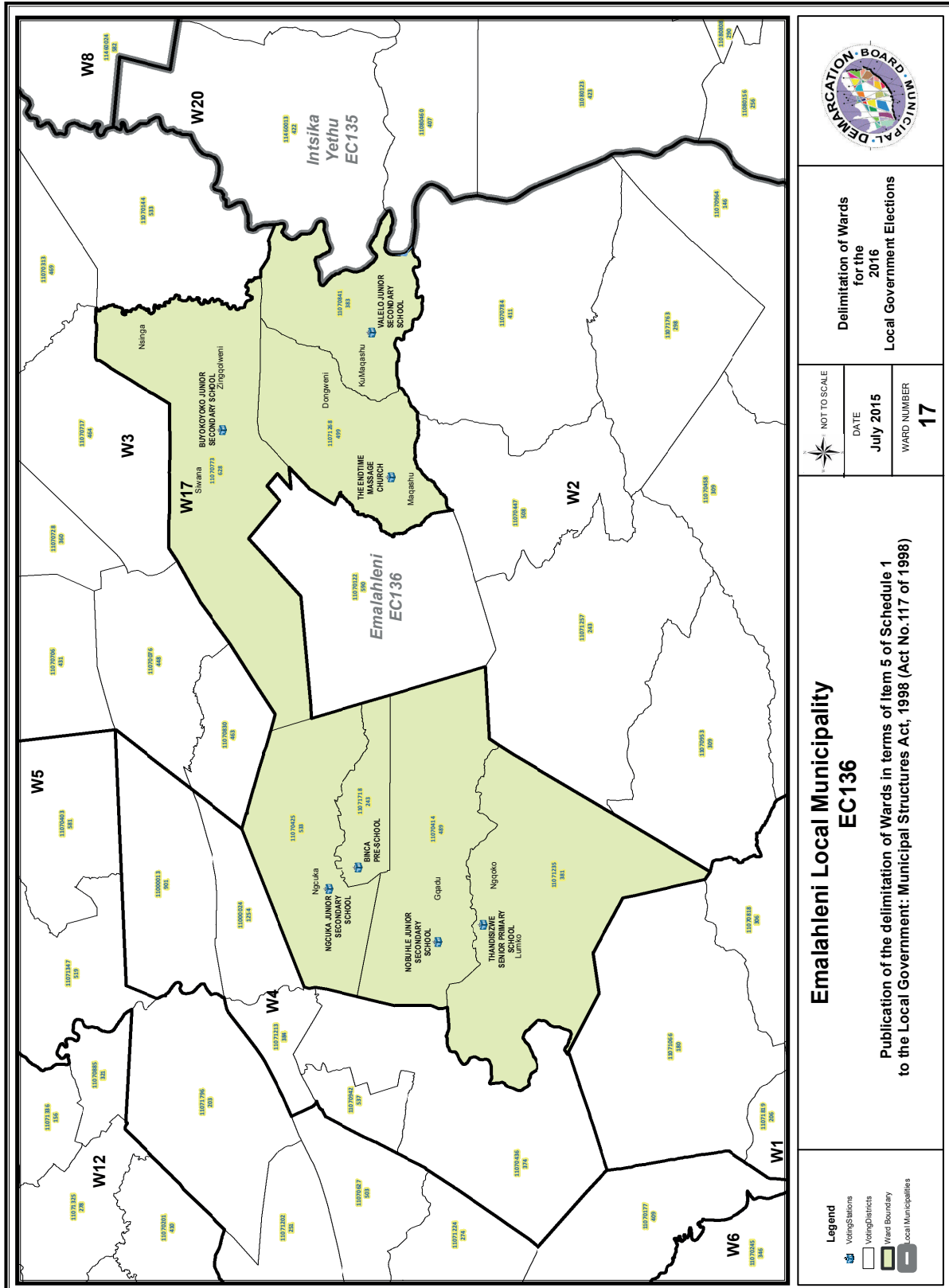












Delimitation of Wards  
for the  
2016  
Local Government Elections

NOT TO SCALE  
DATE  
July 2015  
WARD NUMBER  
17

**Emalahleni Local Municipality  
EC136**  
Publication of the delimitation of Wards in terms of Item 5 of Schedule 1  
to the Local Government: Municipal Structures Act, 1998 (Act No.117 of 1998)

- Legend**
- Voting Stations
  - Voting Districts
  - Ward Boundary
  - Local Municipalities

**FORM/VORM MDB5  
WARD DELIMITATION/  
WYKSAFBAKENING**

**OBJECTION IN TERMS OF ITEM 5(2) OF SCHEDULE 1 TO THE LOCAL GOVERNMENT:  
MUNICIPAL STRUCTURES ACT, 1998**

**BESWAAR INGEVOLGE ITEM 5(2) VAN BYLAE 1 VAN DIE WET OP PLAASLIKE REGERING:  
MUNISIPALE STRUKTURE, 1998**

**Name of municipality/ Naam van Munisipaliteit : .....**

**Code/Kode : .....**

**Name of aggrieved person/institution/Naam van beswaarde persoon/instelling :  
.....**

**Contact person in case of an institution/ Kontak persoon in geval van 'n instelling:  
.....**

**Address/Adres: .....**

**Tel. number/ Tel. nommer:.....Cell number/ Selfoonnommer: .....**

**Email address: .....**



PLEASE USE ADDITIONAL PAGE SHOULD THE ALTERNATIVE PROPOSALS BE MORE THAN THE FOLLOWING SPACE AVAILABLE.

I request the Municipal Demarcation Board to consider the following alternative proposals/ Ek versoek die Munisipale Afbakeningsraad om die volgende alternatiewe voorstelle te oorweeg:

Ward number/ Wyk nommer	The ward should comprise of the following voting districts (Provide voting district number and the number of voters in brackets e.g. VD1123456(1500)+VD345678(2500)=4000)/  Die wyk moet bestaan uit die volgende stemdistrikte: (Voorsien die stemdistriknommer en die getal geregistreerde kiesers as volg VD1123456(1500)+VD345678(2500)=4000)	Motivation /Motivering

I confirm that/ Ek bevestig dat:

- each cluster of voting districts form a contiguous ward/ die saamgevoegde stemdistrikte vorm 'n aaneenlopende wyk;
- the number of voters in each ward fall within the minimum and maximum of voters allowed per ward/ die getal kiesers in elke wyk is binne die minimum en maksimum getal wat per wyk toegelaat word;
- the proposed ward boundaries comply, in general, with the criteria/ die voorgestelde wyke voldoen in die algemeen aan die kriteria.

\_\_\_\_\_  
SIGNATURE

\_\_\_\_\_  
NAME AND SURNAME

\_\_\_\_\_  
DATE





# IMPORTANT

## Information

### from Government Printing Works

Dear Valued Customers,

Government Printing Works has implemented rules for completing and submitting the electronic Adobe Forms when you, the customer, submits your notice request.

Please take note of these guidelines when completing your form.

#### GPW Business Rules

1. No hand written notices will be accepted for processing, this includes Adobe forms which have been completed by hand.
2. Notices can only be submitted in Adobe electronic form format to the email submission address [submit.egazette@gpw.gov.za](mailto:submit.egazette@gpw.gov.za). This means that any notice submissions not on an Adobe electronic form that are submitted to this mailbox will be **rejected**. National or Provincial gazette notices, where the Z95 or Z95Prov must be an Adobe form but the notice content (body) will be an attachment.
3. Notices brought into GPW by "walk-in" customers on electronic media can only be submitted in Adobe electronic form format. This means that any notice submissions not on an Adobe electronic form that are submitted by the customer on electronic media will be **rejected**. National or Provincial gazette notices, where the Z95 or Z95Prov must be an Adobe form but the notice content (body) will be an attachment.
4. All customers who walk in to GPW that wish to submit a notice that is not on an electronic Adobe form will be routed to the Contact Centre where the customer will be taken through the completion of the form by a GPW representative. Where a customer walks into GPW with a stack of hard copy notices delivered by a messenger on behalf of a newspaper the messenger must be referred back to the sender as the submission does not adhere to the submission rules.
5. All notice submissions that do not comply with point 2 will be charged full price for the notice submission.
6. The current cut-off of all Gazette's remains unchanged for all channels. (Refer to the GPW website for submission deadlines – [www.gpwonline.co.za](http://www.gpwonline.co.za))
7. Incorrectly completed forms and notices submitted in the wrong format will be rejected to the customer to be corrected and resubmitted. Assistance will be available through the Contact Centre should help be required when completing the forms. (012-748 6200 or email [info.egazette@gpw.gov.za](mailto:info.egazette@gpw.gov.za))
8. All re-submissions by customers will be subject to the above cut-off times.
9. All submissions and re-submissions that miss the cut-off will be rejected to the customer to be submitted with a new publication date.
10. Information on forms will be taken as the primary source of the notice to be published. Any instructions that are on the email body or covering letter that contradicts the notice form content will be ignored.

You are therefore advised that effective from **Monday, 18 May 2015** should you not comply with our new rules of engagement, all notice requests will be rejected by our new system.

Furthermore, the fax number **012- 748 6030** will also be **discontinued** from this date and customers will only be able to submit notice requests through the email address [submit.egazette@gpw.gov.za](mailto:submit.egazette@gpw.gov.za).



Printed by and obtainable from the Government Printer, Bosman Street, Private Bag X85, Pretoria, 0001.  
 Contact Centre Tel: 012-748 6200. eMail: [info.egazette@gpw.gov.za](mailto:info.egazette@gpw.gov.za)  
 Also available at the Legal Advisory Services, **Province of the Eastern Cape**, Private Bag X0047, Bisho, 5605.  
 Tel. (040) 635-0052.