



PROVINCE OF THE EASTERN CAPE
IPHONDO LEMPUMA KOLONI
PROVINSIE OOS-KAAP

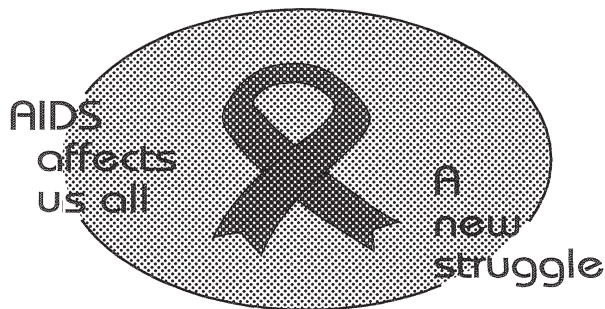
**Provincial Gazette
Igazethi Yephondo
Provinsiale Koerant
(Extraordinary)**

Vol. 22

BISHO/
KING WILLIAM'S TOWN, 22 JULY 2015

No. 3441

We all have the power to prevent AIDS



**AIDS
HELPLINE**

0800 012 322

DEPARTMENT OF HEALTH

Prevention is the cure

N.B. The Government Printing Works will not be held responsible for the quality of "Hard Copies" or "Electronic Files" submitted for publication purposes

ISSN 1682-4556



9 771682 455006

03441



IMPORTANT

Information

from Government Printing Works

Dear Valued Customers,

Government Printing Works has implemented rules for completing and submitting the electronic Adobe Forms when you, the customer, submits your notice request.

Please take note of these guidelines when completing your form.



GPW Business Rules

1. No hand written notices will be accepted for processing, this includes Adobe forms which have been completed by hand.
2. Notices can only be submitted in Adobe electronic form format to the email submission address submit.egazette@gpw.gov.za. This means that any notice submissions not on an Adobe electronic form that are submitted to this mailbox will be **rejected**. National or Provincial gazette notices, where the Z95 or Z95Prov must be an Adobe form but the notice content (body) will be an attachment.
3. Notices brought into GPW by "walk-in" customers on electronic media can only be submitted in Adobe electronic form format. This means that any notice submissions not on an Adobe electronic form that are submitted by the customer on electronic media will be **rejected**. National or Provincial gazette notices, where the Z95 or Z95Prov must be an Adobe form but the notice content (body) will be an attachment.
4. All customers who walk in to GPW that wish to submit a notice that is not on an electronic Adobe form will be routed to the Contact Centre where the customer will be taken through the completion of the form by a GPW representative. Where a customer walks into GPW with a stack of hard copy notices delivered by a messenger on behalf of a newspaper the messenger must be referred back to the sender as the submission does not adhere to the submission rules.
5. All notice submissions that do not comply with point 2 will be charged full price for the notice submission.
6. The current cut-off of all Gazette's remains unchanged for all channels. (Refer to the GPW website for submission deadlines – www.gpwonline.co.za)
7. Incorrectly completed forms and notices submitted in the wrong format will be rejected to the customer to be corrected and resubmitted. Assistance will be available through the Contact Centre should help be required when completing the forms. (012-748 6200 or email info.egazette@gpw.gov.za)
8. All re-submissions by customers will be subject to the above cut-off times.
9. All submissions and re-submissions that miss the cut-off will be rejected to the customer to be submitted with a new publication date.
10. Information on forms will be taken as the primary source of the notice to be published. Any instructions that are on the email body or covering letter that contradicts the notice form content will be ignored.

You are therefore advised that effective from **Monday, 18 May 2015** should you not comply with our new rules of engagement, all notice requests will be rejected by our new system.

Furthermore, the fax number **012- 748 6030** will also be **discontinued** from this date and customers will only be able to submit notice requests through the email address submit.egazette@gpw.gov.za.

DISCLAIMER:

Government Printing Works reserves the right to apply the 25% discount to all Legal and Liquor notices that comply with the business rules for notice submissions for publication in gazettes.

National, Provincial, Road Carrier Permits and Tender notices will pay the price as published in the Government Gazettes.

For any information, please contact the eGazette Contact Centre on 012-748 6200 or email info.egazette@gpw.gov.za

Table of Contents

<i>No.</i>		<i>Gazette No.</i>	<i>Page No.</i>
PROVINCIAL NOTICES • PROVINSIALE KENNISGEWINGS			
55	Local Government: Municipal Structures Act (117/1998): Municipal Demarcation Board: Delimitation of municipal wards: Ngqushwa Local Municipality (EC126)	3441	4
55	Wet Op Plaaslike Regering: Munisipale Strukture (117/1998): Munisipale Afbakeningsraad: Afbakening van munisipale wyke: Ngqushwa Local Municipality (EC126).....	3441	5

PROVINCIAL NOTICES • PROVINSIALE KENNISGEWINGS

PROVINCIAL NOTICE 55 OF 2015**MUNICIPAL DEMARCATION BOARD : DELIMITATION OF
MUNICIPAL WARDS IN TERMS OF THE LOCAL
GOVERNMENT : MUNICIPAL STRUCTURES ACT, 1998.****Ngqushwa Local Municipality
EC126**

In terms of Item 5 (1) of Schedule 1 to the Local Government: Municipal Structures Act, 1998 (Act No. 117 of 1998) (the Act) the Municipal Demarcation Board hereby publishes its delimitation of wards for the above-mentioned municipality. Particulars of the delimitation are listed in the Schedule.

In terms of Item 5 (2) of Schedule 1 to the Act, any person aggrieved by the delimitation may, within 14 days of publication of this notice, submit objections in writing to:

The Municipal Demarcation Board
Private Bag X123
Centurion
0046

Fax: 086 5248643
Email: wards@demarcation.org.za

The attached form MDB 5 must please be used to object. The form is also available on www.demarcation.org.za

**MS JANE THUPANA
CHAIRPERSON: MUNICIPAL DEMARCATION BOARD****SCHEDULE**

In terms of section 18(3) of the Local Government: Municipal Structures Act, 1998 (Act 117 of 1998), the MEC responsible for local government has determined that the municipal council consists of 23 councillors.

After having consulted the Independent Electoral Commission, The Municipal Demarcation Board has delimited the municipality into 12 wards in terms of Schedule 1 of the Act.

The number of registered voters in each ward does not vary by more than fifteen percent from the norm. The norm was determined by dividing the total number of voters on the municipal segment of the national common voters roll, namely 38731 voters on 5 March 2014, by the number of wards in the municipality.

An overview map of the boundary of the municipality, with the boundaries of the wards within the municipality, and a map of each ward are attached. In case of a discrepancy between the map and this schedule, the map will prevail. The ward numbers, the voting districts and voting stations in each ward, and the number of voters are as follows:

PROVINSIALE KENNISGEWING 55 VAN 2015**MUNISIPALE AFBAKENINGSRAAD :
AFBAKENING VAN MUNISIPALE WYKE INGEVOLGE DIE WET OP
PLAASLIKE REGERING: MUNISIPALE STRUKTURE, 1998****Ngqushwa Local Municipality****EC126**

Ingevolge Item 5(1) van Bylae 1 van die Wet op Plaaslike Regering: Munisipale Strukture, 1998 (Wet No. 117 van 1998) (die Wet) publiseer die Munisipale Afbakeningsraad hiermee sy afbakening van wyke vir die bogenaaamde munisipaliteit. Besonderhede van die afbakening is vervat in die Bylae.

Ingevolge item 5(2) van Bylae 1 van die Wet, kan enige persoon wat gegrief is deur 'n afbakening binne 14 dae vanaf publikasie van hierdie kennisgewing skriftelike besware voorlê aan:

Die Munisipale Afbakeningsraad
Privaatsak X123
Centurion
0046

Faks: 086 5248643
E-pos: wards@demarcation.org.za

Die aangehegte vorm MDB5 moet asseblief gebruik word om beswaar aan te teken. Die vorm is ook beskikbaar op www.demarcation.org.za

**MS JANE THUPANA
VOORSITTER : MUNISIPALE AFBAKENINGSRAAD****BYLAE**

Ingevolge artikel 18(3) van die Wet op Plaaslike Regering: Munisipale Strukture, 1998 (Wet 117 van 1998) het die LUR vir plaaslike regering bepaal dat die munisipale raad bestaan uit 23 raadslede.

Na oorlegpleging met die Onafhanklike Verkiesingskommissie het die Munisipale Afbakeningsraad die munisipaliteit in 12 wyke afgebaken ingevolge Bylae 1 van die Wet.

Die getal geregistreerde kiesers in elke wyk, wyk nie meer as vyftien persent van die norm af nie. Die norm is bepaal deur die getal geregistreerde kiesers op die munisipale segment van die nasionale gemeenskaplike kieserslys, naamlik 38731 kiesers op 5 Maart 2014, deur die getal wyke in die munisipaliteit te deel.

'n Oorsigkaart van die munisipale grens met die grense van die wyke binne die munisipale grens, en 'n kaart van elke wyk, is aangeheg. Ingeval van 'n verskil tussen 'n kaart en hierdie bylae, sal die kaart geld.

Die wyknommers, die stembedstrikte en stemlokale in elke wyk, en die getal kiesers is as volg:

Ward 1 comprises of a total of 3302 registered voters.
Wyk 1 bestaan uit 'n totaal van 3302 geregistreerde kiesers.
 MIN VOTERS/KIESER 2744 NORM 3228 MAX VOTERS/KIESER 3712

VOTING DISTRICT No. STEMDISTRIK No.	VOTING STATION NAME STEMLOKAAL NAAM	NUMBER OF VOTERS GETAL KIESERS	SPLIT VD VERDEELDE SD
10871401	KWANXOPHO	269	
10871333	GOBOZANA SCHOOL	577	
10871322	NONIBE LOWER/HIGHER PRIMARY SCHOOL	525	
10871265	NTSIKIZINI HIGHER PRIMARY SCHOOL	343	
10870365	NOLALI MPENTSE SECONDARY SCHOOL	521	
10870848	TYENI SCHOOL	338	
10870882	IMIDUSHANE SECONDARY SCHOOL	453	
10870376	GUSHIPHELE HIGH SCHOOL	276	

Ward 2 comprises of a total of 3532 registered voters.
Wyk 2 bestaan uit 'n totaal van 3532 geregistreerde kiesers.
 MIN VOTERS/KIESER 2744 NORM 3228 MAX VOTERS/KIESER 3712

VOTING DISTRICT No. STEMDISTRIK No.	VOTING STATION NAME STEMLOKAAL NAAM	NUMBER OF VOTERS GETAL KIESERS	SPLIT VD VERDEELDE SD
10871467	TILDIN PRIMARY SCHOOL	261	
10870084	DANIEL MPENDU LOWER/HIGHER PRIMARY SCHOOL	279	
10870321	QUGQWALA PRIMARY SCHOOL	752	
10870859	TYHATA HIGHER PRIMARY SCHOOL	462	
10870893	ZONDEKA PRIMARY SCHOOL	455	
10871298	ZIMBABA PRIMARY SCHOOL	481	
10871388	ENYATYORA PRIMARY SCHOOL	179	
10871399	DLOVA COMMUNITY HALL	348	
10871434	SETSE LOWER/HIGHER PRIMARY SCHOOL	137	
10871478	MAVATHULANA PRIMARY SCHOOL	178	

Ward 3 comprises of a total of 3390 registered voters.
Wyk 3 bestaan uit 'n totaal van 3390 geregistreerde kiesers.
 MIN VOTERS/KIESER 2744 NORM 3228 MAX VOTERS/KIESER 3712

VOTING DISTRICT No. STEMDISTRIK No.	VOTING STATION NAME STEMLOKAAL NAAM	NUMBER OF VOTERS GETAL KIESERS	SPLIT VD VERDEELDE SD
10920316	NQWENERANA PRIMARY SCHOOL	338	
10920462	AYABULELA LOWER/HIGHER PRIMARY SCHOOL	234	

10920439	BALTEIN SCHOOL	177
10920428	HLOSINI HIGHER PRIMARY SCHOOL	137
10871412	QAUKENI	451
10871423	KALANA LOWER/HIGHER PRIMARY SCHOOL	393
10871287	SAKHEKILE LOWER PRIMARY SCHOOL	203
10920305	TSENEKANA PRIMARY SCHOOL	178
10920282	MQWASHU PRIMARY SCHOOL	365
10920259	RHESHTWA SECONDARY SCHOOL	482
10870343	MABEFU/MABHONGO PRIMARY SCHOOL	309
10920079	GCINISA PRIMARY SCHOOL	123

Ward 4 comprises of a total of 2991 registered voters.
Wyk 4 bestaan uit 'n totaal van 2991 geregistreerde kiesers.
MIN VOTERS/KIESER 2744 **NORM** 3228 **MAX VOTERS/KIESER** 3712

VOTING DISTRICT No. STEMDISTRIK No.	VOTING STATION NAME STEMLOKAAL NAAM	NUMBER OF VOTERS GETAL KIESERS	SPLIT VD VERDEELDE SD
10871243	PHOLE LOWER PRIMARY SCHOOL	282	
10870062	ZANEMFUNDO SECONDARY SCHOOL	1045	
10871254	ENTILINI PRIMARY SCHOOL	478	
10870736	MADLIKI PRIMARY SCHOOL	388	
10870264	MDOLOMBA PRIMARY SCHOOL	449	
10870073	UPPER DUBE SCHOOL	349	

Ward 5 comprises of a total of 3234 registered voters.
Wyk 5 bestaan uit 'n totaal van 3234 geregistreerde kiesers.
MIN VOTERS/KIESER 2744 **NORM** 3228 **MAX VOTERS/KIESER** 3712

VOTING DISTRICT No. STEMDISTRIK No.	VOTING STATION NAME STEMLOKAAL NAAM	NUMBER OF VOTERS GETAL KIESERS	SPLIT VD VERDEELDE SD
10920383	ZANETHEMBA LH PRIMARY SCHOOL	376	
10920530	LEQENI L/HP SCHOOL	128	
10920068	NTYATYAMBO PRIMARY SCHOOL	809	
10920057	TUWA PRIMARY SCHOOL	497	
10920394	BODYAM LOWER/HIGHER PRIMARY SCHOOL	229	
10920080	NDABAZANDILE HIGH SCHOOL	662	
10920518	TUKU CRECHE	252	
10920091	WOOLRIDGE COMMUNITY HALL	281	

Ward 6 comprises of a total of 3226 registered voters.
Wyk 6 bestaan uit 'n totaal van 3226 geregisteerde kiesers.
 MIN VOTERS/KIESER 2744 NORM 3228 MAX VOTERS/KIESER 3712

VOTING DISTRICT No. STEMDISTRIK No.	VOTING STATION NAME STEMLOKAAL NAAM	NUMBER OF VOTERS GETAL KIESERS	SPLIT VD VERDEELDE SD
10920350	CHELETYUMA LOWER HIGHER PRIMARY	488	
10920226	NCALA PRIMARY SCHOOL	354	
10920147	NYANISO JUNIOR PRIMARY	602	
10920451	FENI LOWER/HIGHER PRIMARY SCHOOL	447	
10920237	ZWELIXOLILE LOWER/HIGHER PRIMARY SCHOOL	747	
10920541	QINGQA MNTWANA JUNIOR PRIMARY SCHOOL	160	
10920372	CISIRA L/H PRIMARY SCHOOL	428	

Ward 7 comprises of a total of 2988 registered voters.
Wyk 7 bestaan uit 'n totaal van 2988 geregisteerde kiesers.
 MIN VOTERS/KIESER 2744 NORM 3228 MAX VOTERS/KIESER 3712

VOTING DISTRICT No. STEMDISTRIK No.	VOTING STATION NAME STEMLOKAAL NAAM	NUMBER OF VOTERS GETAL KIESERS	SPLIT VD VERDEELDE SD
10920103	QAMNYANA COMMUNITY HALL	204	
10920529	MPENDULO LOWER PRIMARY SCHOOL	247	
10920204	NDWAYANA PRIMARY SCHOOL	410	
10920271	RURA PRIMARY SCHOOL	262	
10920260	HORTON PRIMARY SCHOOL	407	
10920440	GWABENI LOWER/HIGHER PRIMARY SCHOOL	127	
10920215	KANANA HIGH SCHOOL	669	
10920192	QHAYIYA LOWER & HIGHER PRIMARY SCHOOL.	662	

Ward 8 comprises of a total of 3629 registered voters.
Wyk 8 bestaan uit 'n totaal van 3629 geregisteerde kiesers.
 MIN VOTERS/KIESER 2744 NORM 3228 MAX VOTERS/KIESER 3712

VOTING DISTRICT No. STEMDISTRIK No.	VOTING STATION NAME STEMLOKAAL NAAM	NUMBER OF VOTERS GETAL KIESERS	SPLIT VD VERDEELDE SD
10710010	NCUMISA KHONDLO SPORT CENTRE	1530	
10710021	FEZEKA LOWER/HIGHER PRIMARY SCHOOL	1523	
10710032	AILIF PRIMARY SCHOOL	576	

Ward 9 comprises of a total of 3002 registered voters.
Wyk 9 bestaan uit 'n totaal van 3002 geregistreerde kiesers.
 MIN VOTERS/KIESER 2744 NORM 3228 MAX VOTERS/KIESER 3712

VOTING DISTRICT No. STEMDISTRIK No.	VOTING STATION NAME STEMLOKAAL NAAM	NUMBER OF VOTERS GETAL KIESERS	SPLIT VD VERDEELDE SD
10920181	MGWALANA PRIMARY SCHOOL	558	
10920484	PIKOLI COMMUNITY HALL	383	
10920473	NOBUMBA LOWER PRIMARY SCHOOL	507	
10920293	WOODLANDS PRE-SCHOOL	453	
10920327	H M MAKINANA SCHOOL	369	
10920361	MINENKULU SENIOR SECONDARY SCHOOL	417	
10920248	DR STAMPER HIGH SCHOOL	315	

Ward 10 comprises of a total of 3226 registered voters.
Wyk 10 bestaan uit 'n totaal van 3226 geregistreerde kiesers.
 MIN VOTERS/KIESER 2744 NORM 3228 MAX VOTERS/KIESER 3712

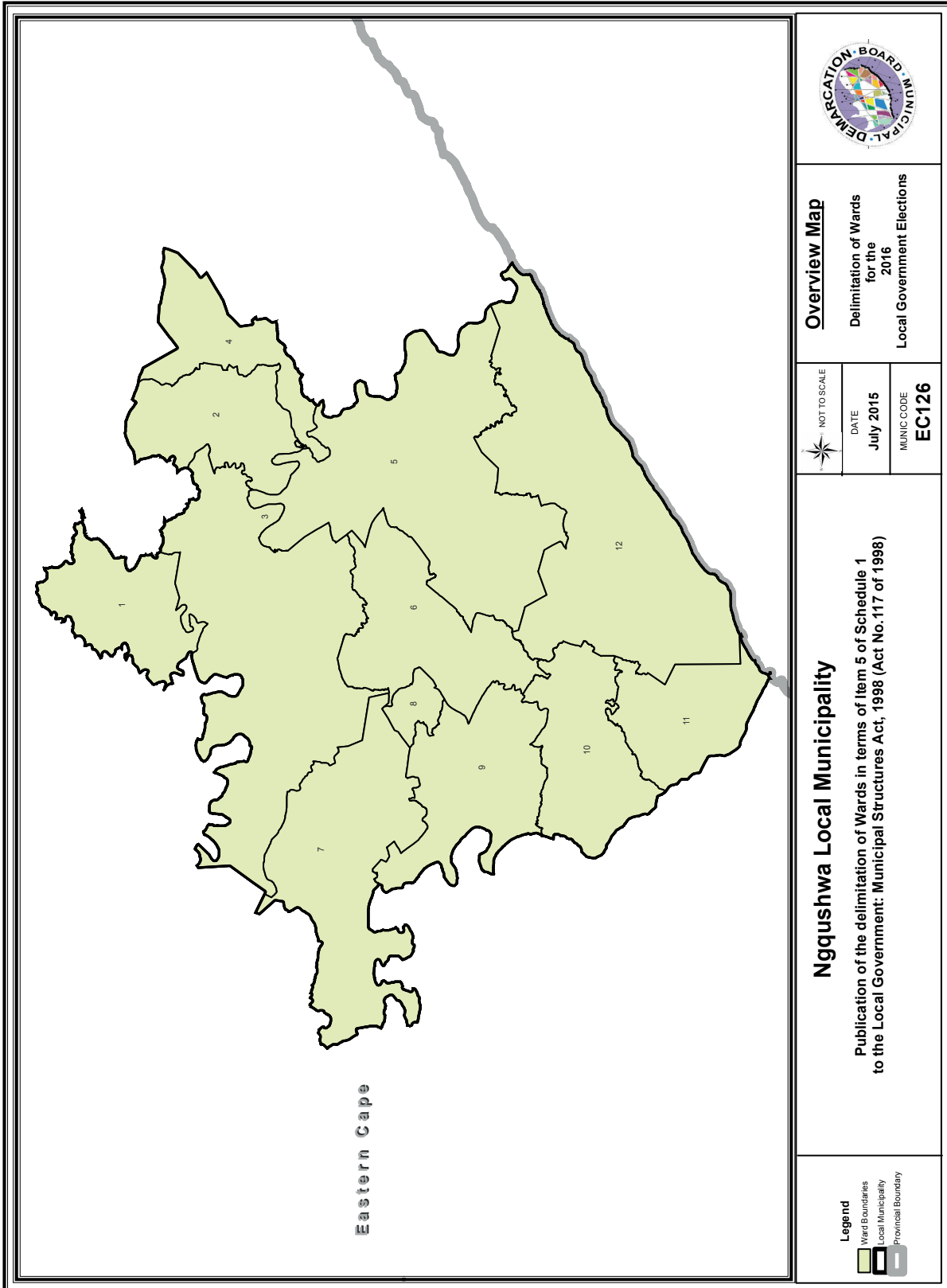
VOTING DISTRICT No. STEMDISTRIK No.	VOTING STATION NAME STEMLOKAAL NAAM	NUMBER OF VOTERS GETAL KIESERS	SPLIT VD VERDEELDE SD
10920170	EMFUNDWENI HIGH SCHOOL	772	
10920158	NGQOWA COMMUNITY HALL	368	
10920136	LUJIKO PRIMARY SCHOOL	901	
10920495	LOWER MGWALANA	357	
10920169	SIYATHEMBA HIGHER PRIMARY SCHOOL	622	
10920507	MHLANGANISO LOWER/HIGHER PRIMARY SCHOOL	166	
10920552	NEWTONDALE PRIMARY SCHOOL	40	

Ward 11 comprises of a total of 2818 registered voters.
Wyk 11 bestaan uit 'n totaal van 2818 geregistreerde kiesers.
 MIN VOTERS/KIESER 2744 NORM 3228 MAX VOTERS/KIESER 3712

VOTING DISTRICT No. STEMDISTRIK No.	VOTING STATION NAME STEMLOKAAL NAAM	NUMBER OF VOTERS GETAL KIESERS	SPLIT VD VERDEELDE SD
10920024	JAMA SENIOR SECONDARY SCHOOL	503	
10920114	MPEKO PRIMARY SCHOOL	943	
10920013	MASIBAMBANISANE LOWER/HIGHER PRIMARY SCHO	1014	
10920125	GOPHE PRIMARY SCHOOL	358	

Ward 12 comprises of a total of 3393 registered voters.
Wyk 12 bestaan uit 'n totaal van 3393 geregistreerde kiesers.
 MIN VOTERS/KIESER 2744 NORM 3228 MAX VOTERS/KIESER 3712

VOTING DISTRICT No. STEMDISTRIK No.	VOTING STATION NAME STEMLOKAAL NAAM	NUMBER OF VOTERS GETAL KIESERS	SPLIT VD VERDEELDE SD
10920417	HAMILTON LOWER/HIGHER PRIMARY SCHOOL	315	
10920406	BHINQALA LOWER/HIGHER PRIMARY SCHOOL	214	
10920349	SIBONELE PRIMARY SCHOOL	896	
10920046	DANINGE PRIMARY SCHOOL	706	
10920035	BENTON PRIMARY SCHOOL	465	
10610019	HAMBURG TOWN HALL	797	

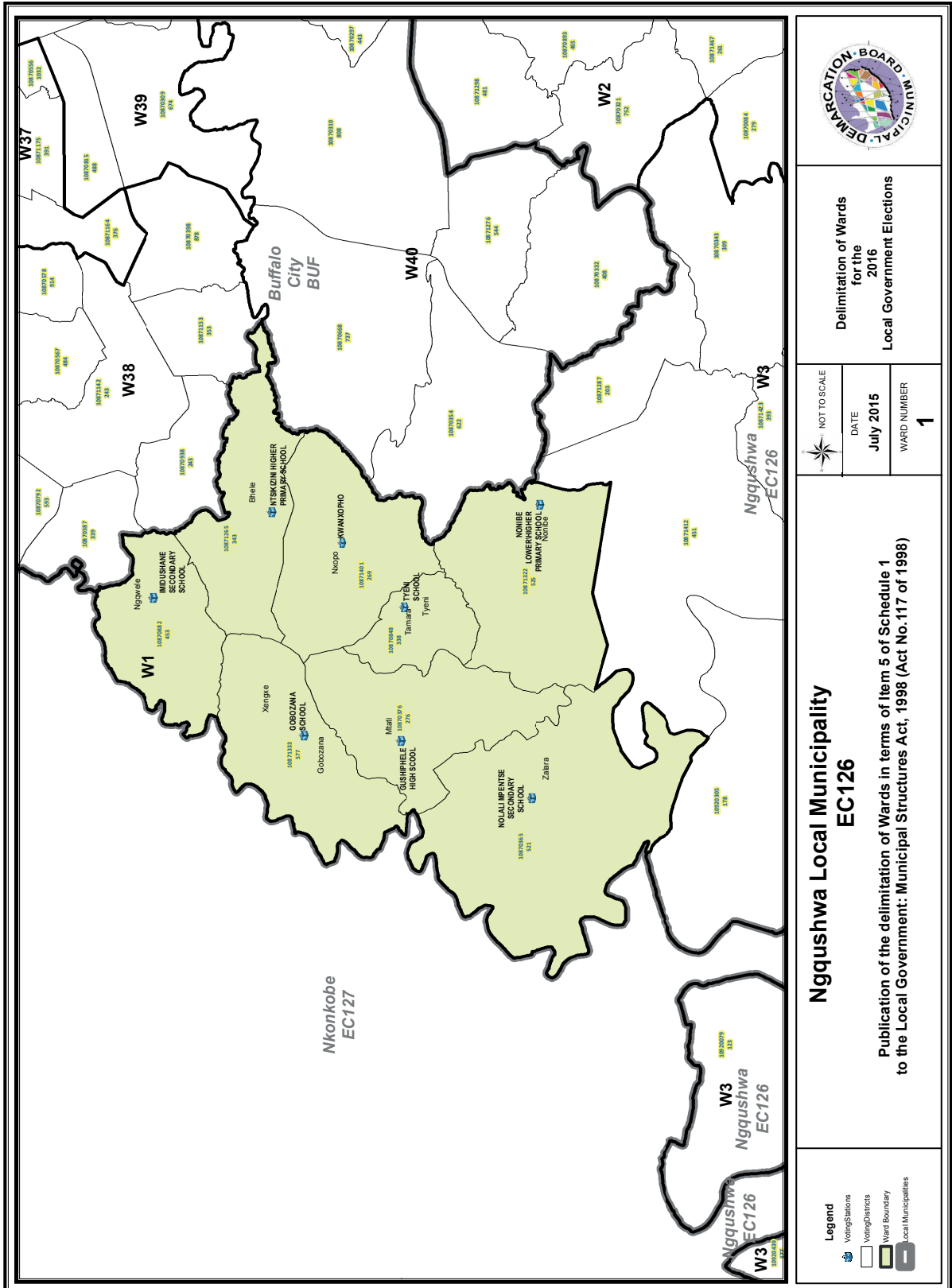


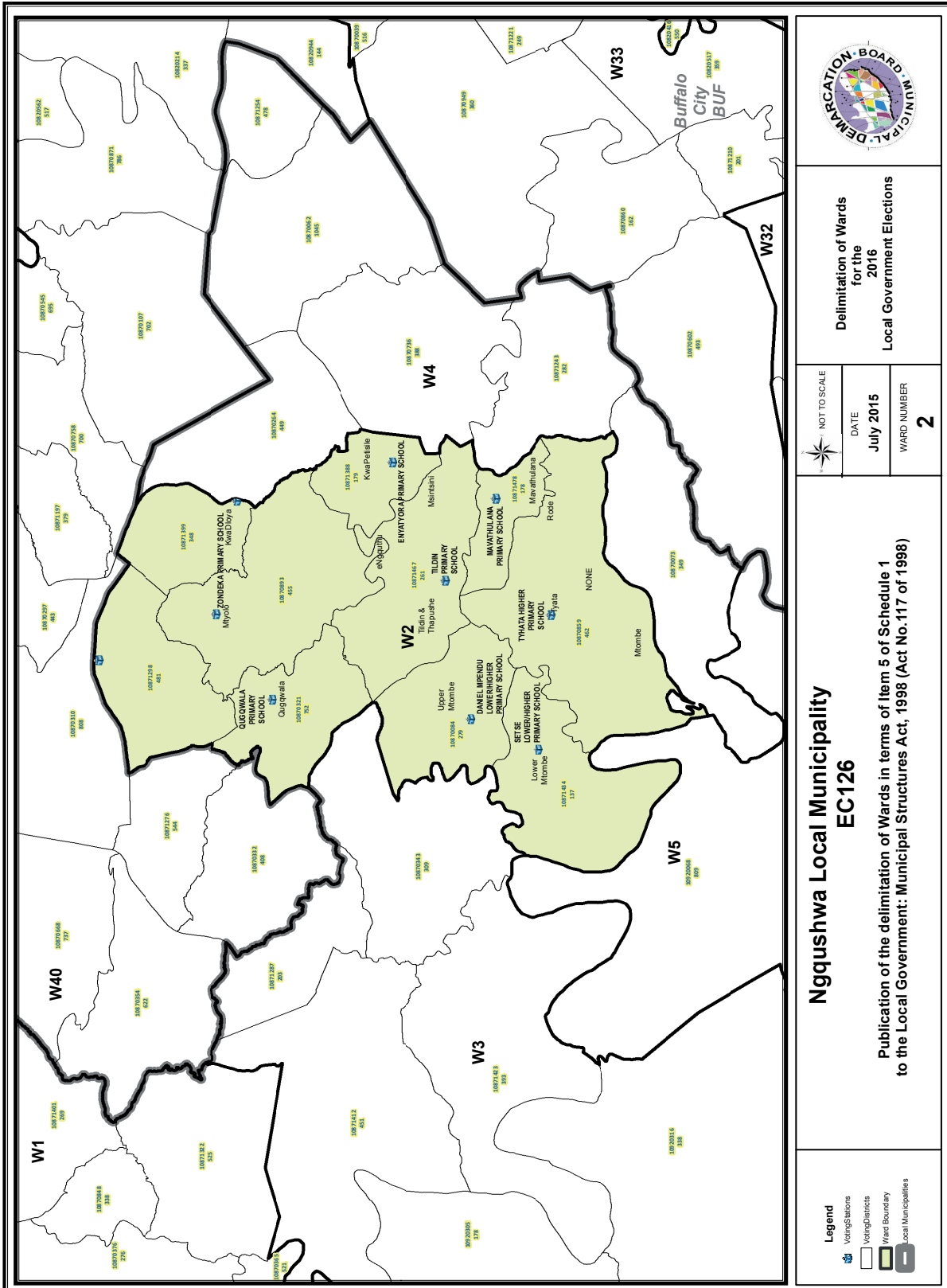
Overview Map
 Delimitation of Wards
 for the
 2016
 Local Government Elections

NOT TO SCALE
DATE July 2015
MUNICIPALITY CODE EC126

Ngqushwa Local Municipality
 Publication of the delimitation of Wards in terms of Item 5 of Schedule 1
 to the Local Government: Municipal Structures Act, 1998 (Act No. 117 of 1998)

Legend
 Ward Boundaries
 Local Municipality
 Provincial Boundary





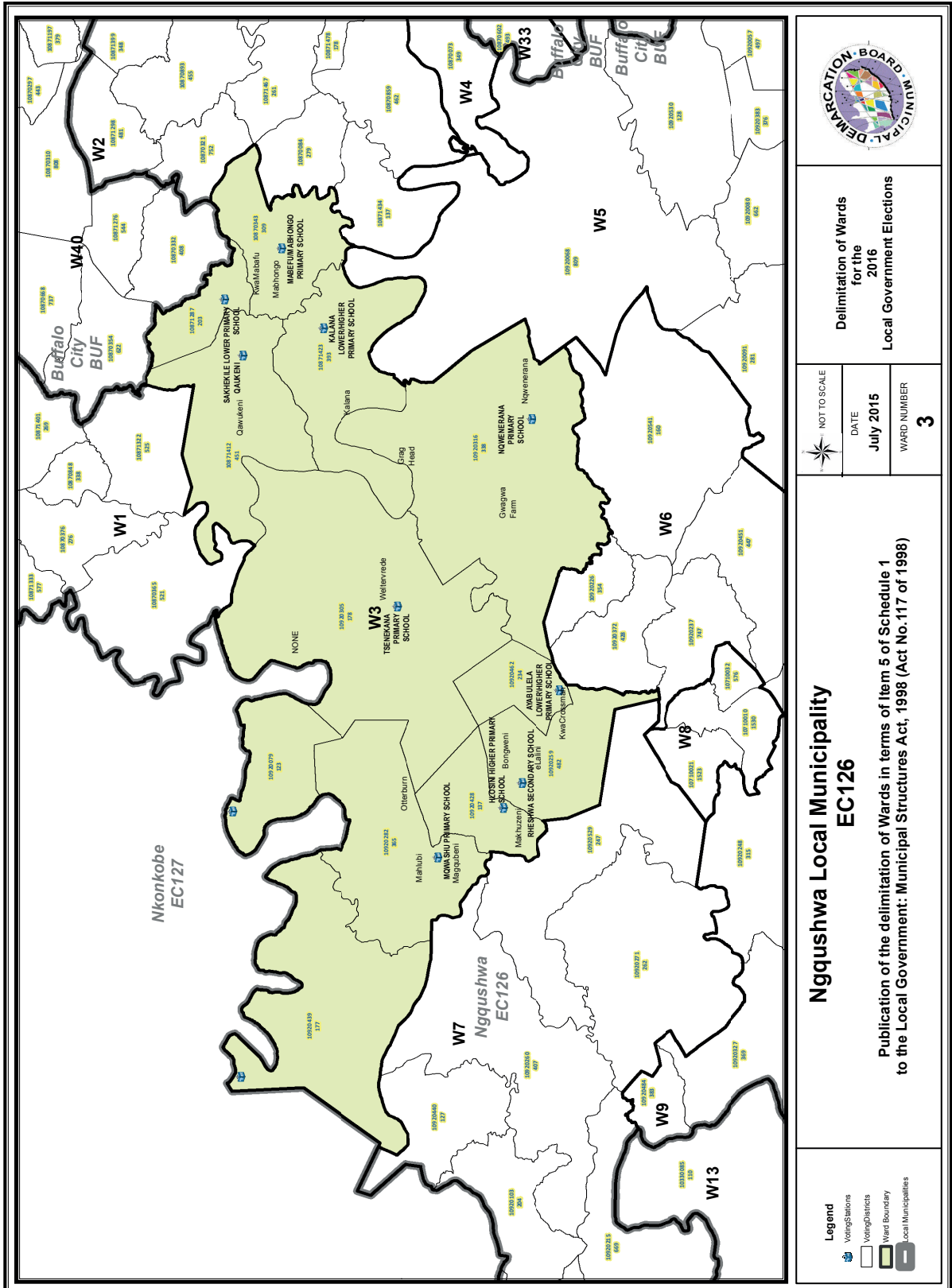
Delimitation of Wards
for the
2016
Local Government Elections

NOT TO SCALE
DATE
July 2015
WARD NUMBER
2

**Ngqushwa Local Municipality
EC126**

Publication of the delimitation of Wards in terms of Item 5 of Schedule 1
to the Local Government: Municipal Structures Act, 1998 (Act No.117 of 1998)

- Voting Stations
- Voting Districts
- Ward Boundary
- Local Municipalities



Legend

- Voting Stations
- Voting Districts
- Ward Boundary
- Local Municipalities

NOT TO SCALE

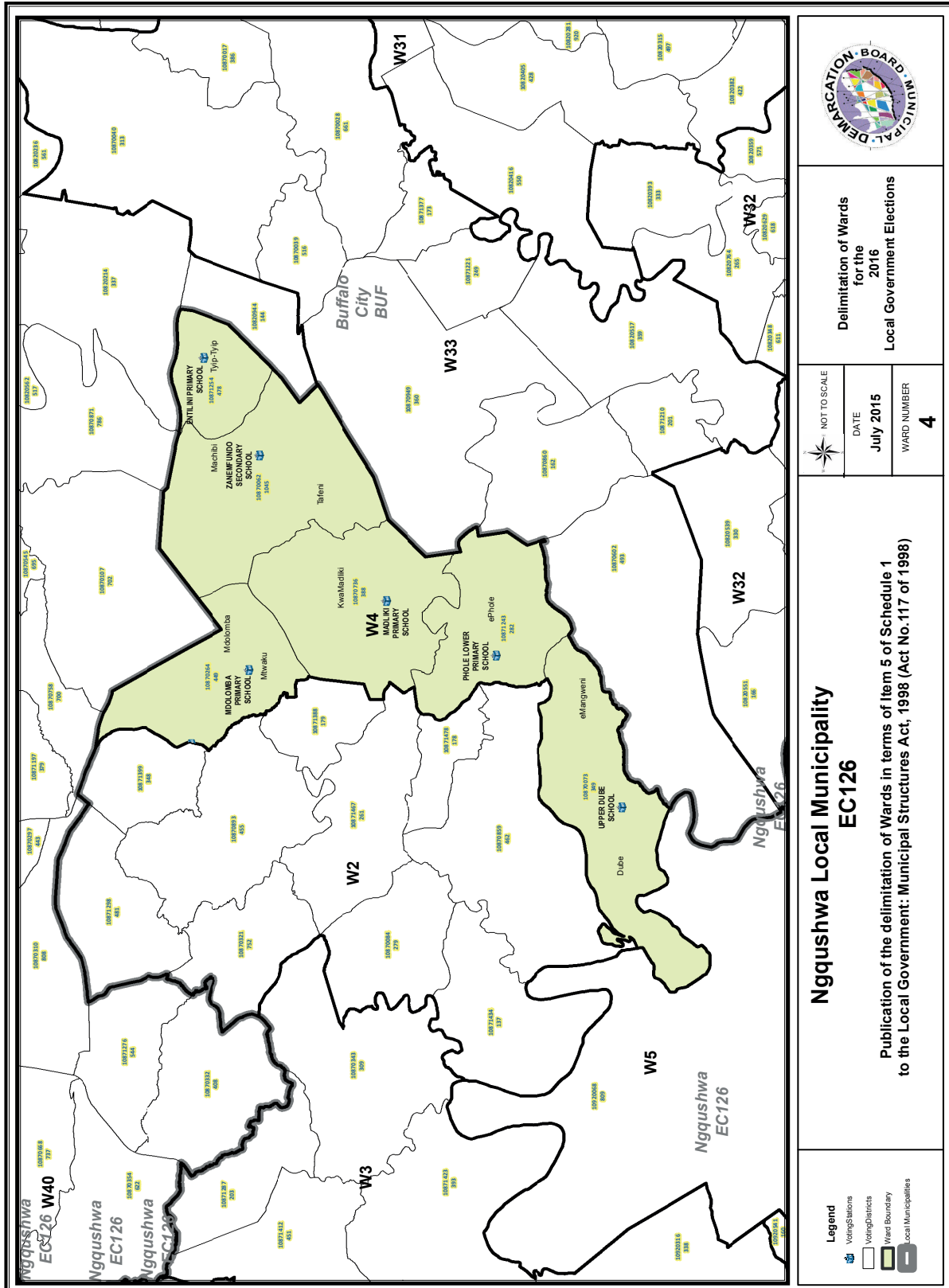
DATE
July 2015

WARD NUMBER
3

**Delimitation of Wards
for the
2016
Local Government Elections**

**Nqgushwa Local Municipality
EC126**

Publication of the delimitation of Wards in terms of Item 5 of Schedule 1
to the Local Government: Municipal Structures Act, 1998 (Act No.117 of 1998)



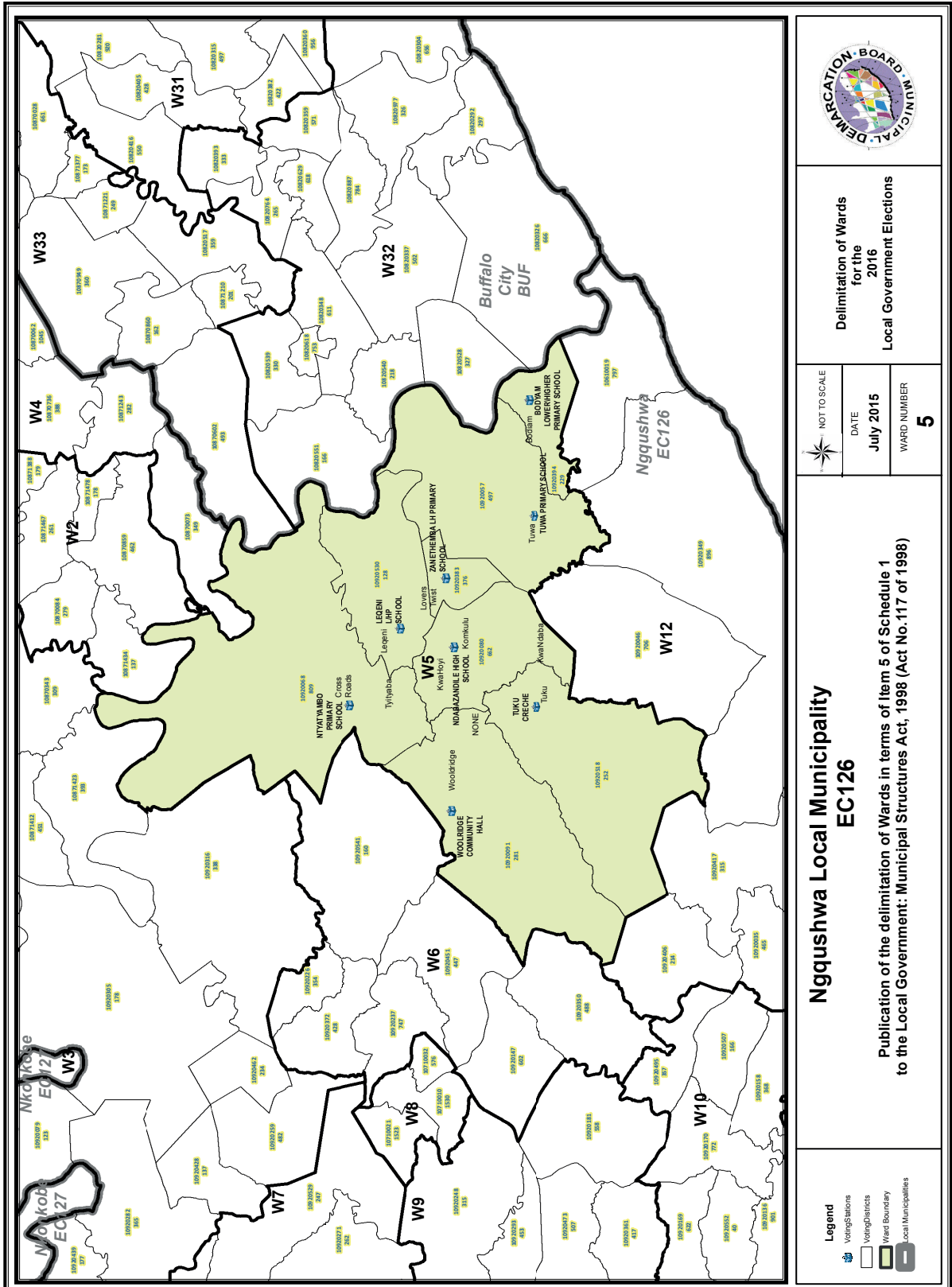
Delimitation of Wards
for the
2016
Local Government Elections

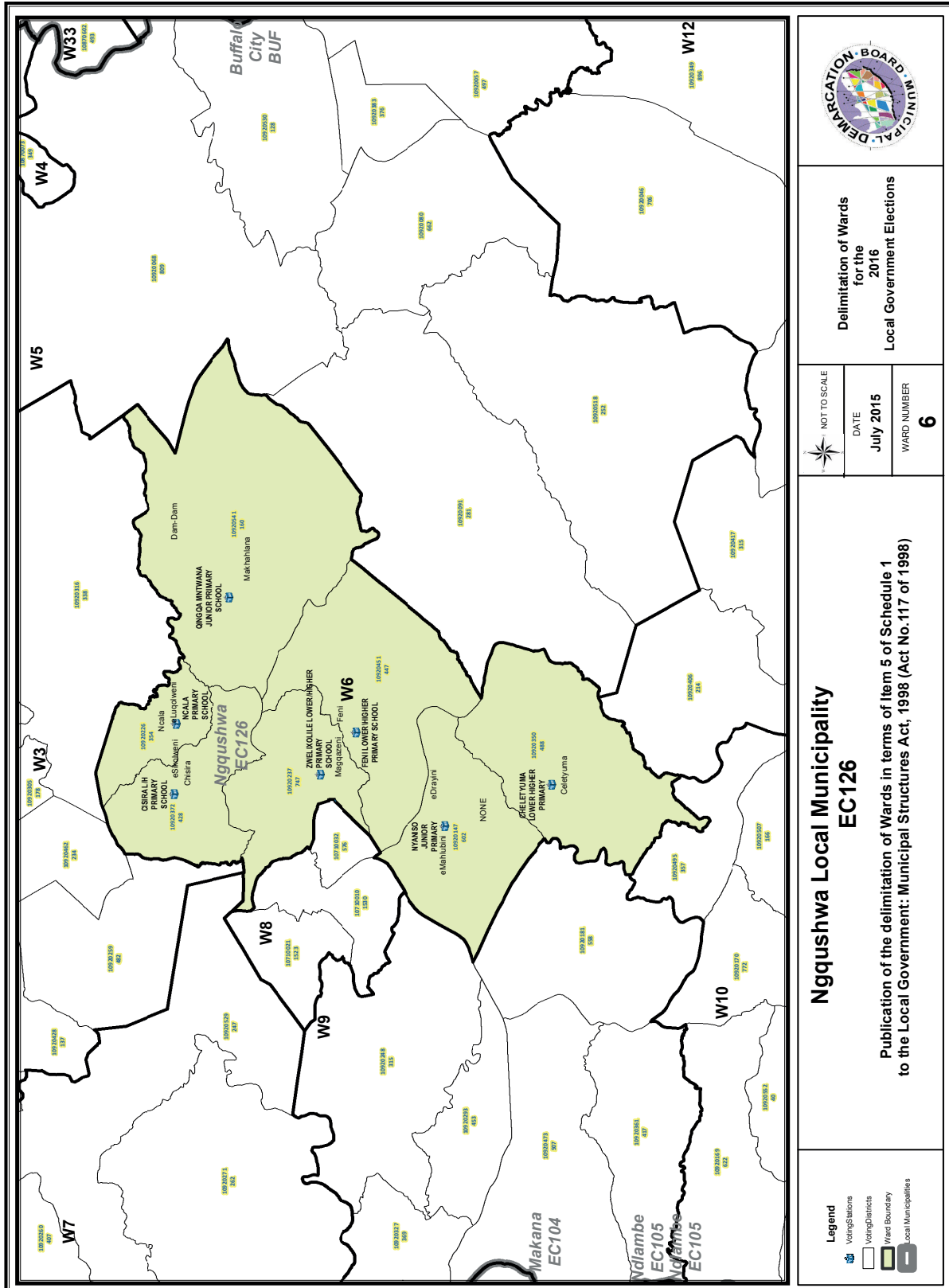
NOT TO SCALE
DATE July 2015
WARD NUMBER 4

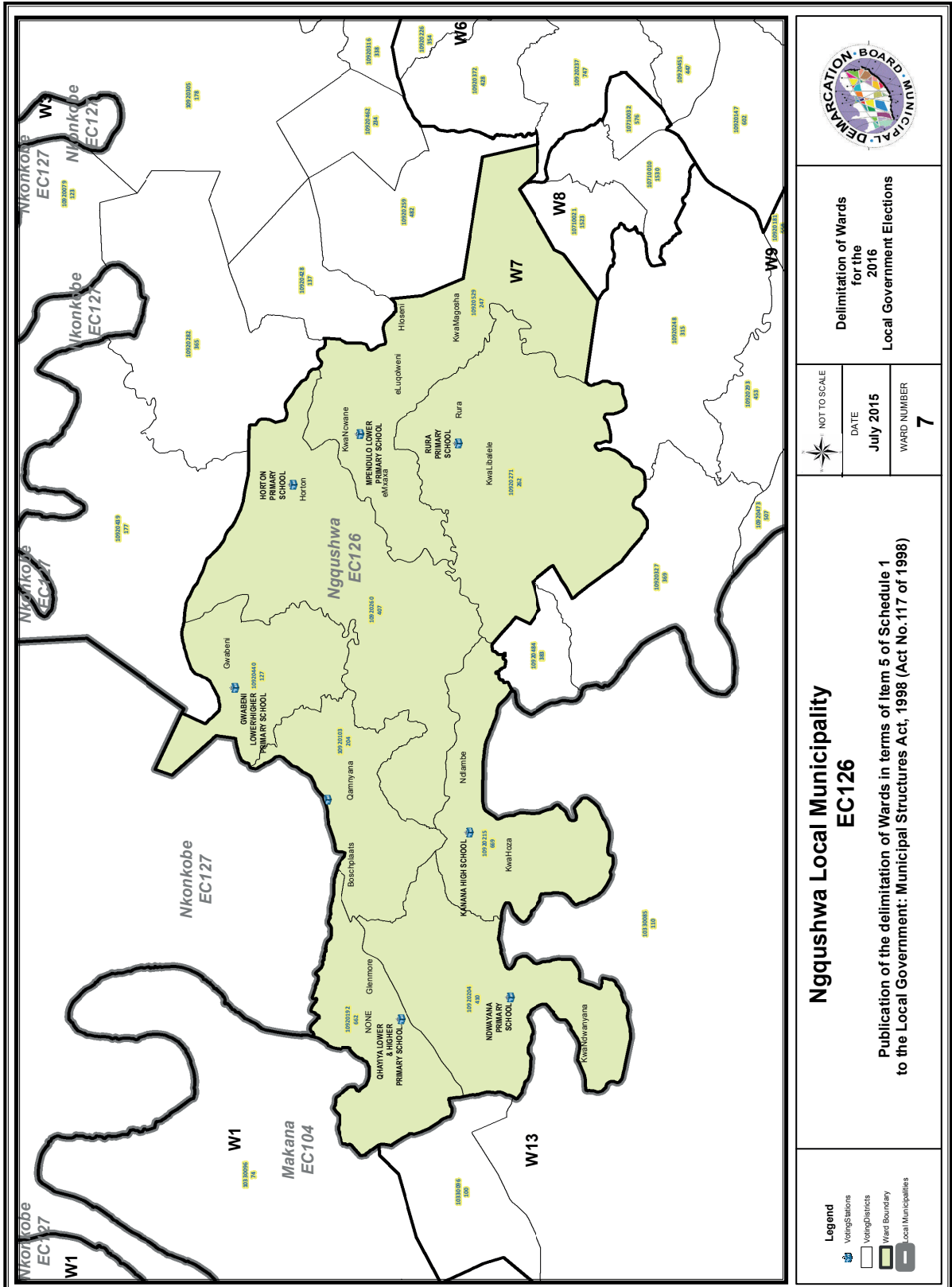
**Nggqushwa Local Municipality
EC126**

Publication of the delimitation of Wards in terms of Item 5 of Schedule 1
to the Local Government: Municipal Structures Act, 1998 (Act No.117 of 1998)

- Legend**
- Voting Stations
 - Voting Districts
 - Ward Boundary
 - Local Municipalities







Legend

- Voting Stations
- Voting Districts
- Ward Boundary
- Local Municipalities

Nggqushwa Local Municipality EC126

Publication of the delimitation of Wards in terms of Item 5 of Schedule 1 to the Local Government: Municipal Structures Act, 1998 (Act No.117 of 1998)

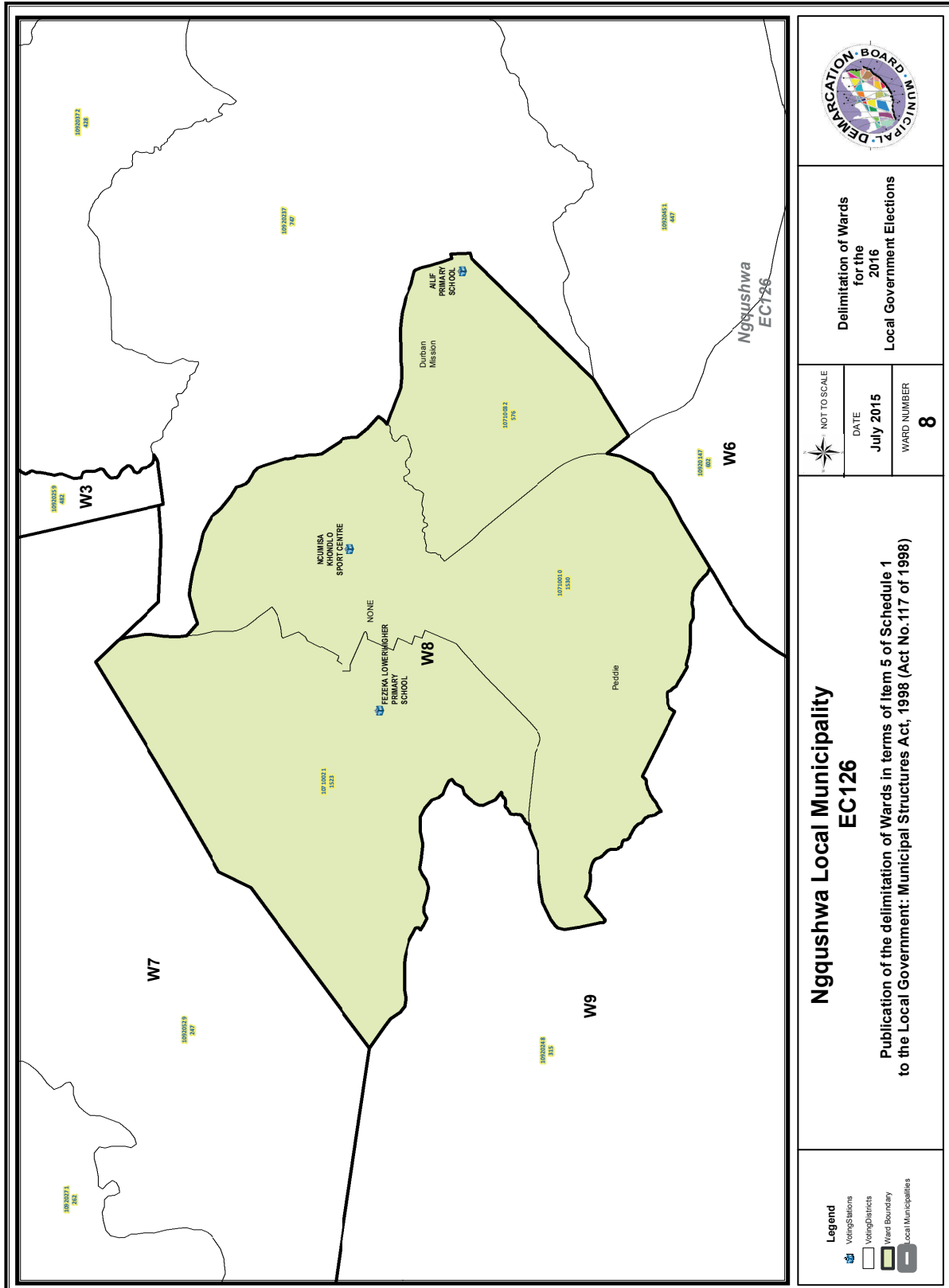
Demarcation Board Municipal

Delimitation of Wards for the 2016 Local Government Elections

NOT TO SCALE

DATE
July 2015

WARD NUMBER
7



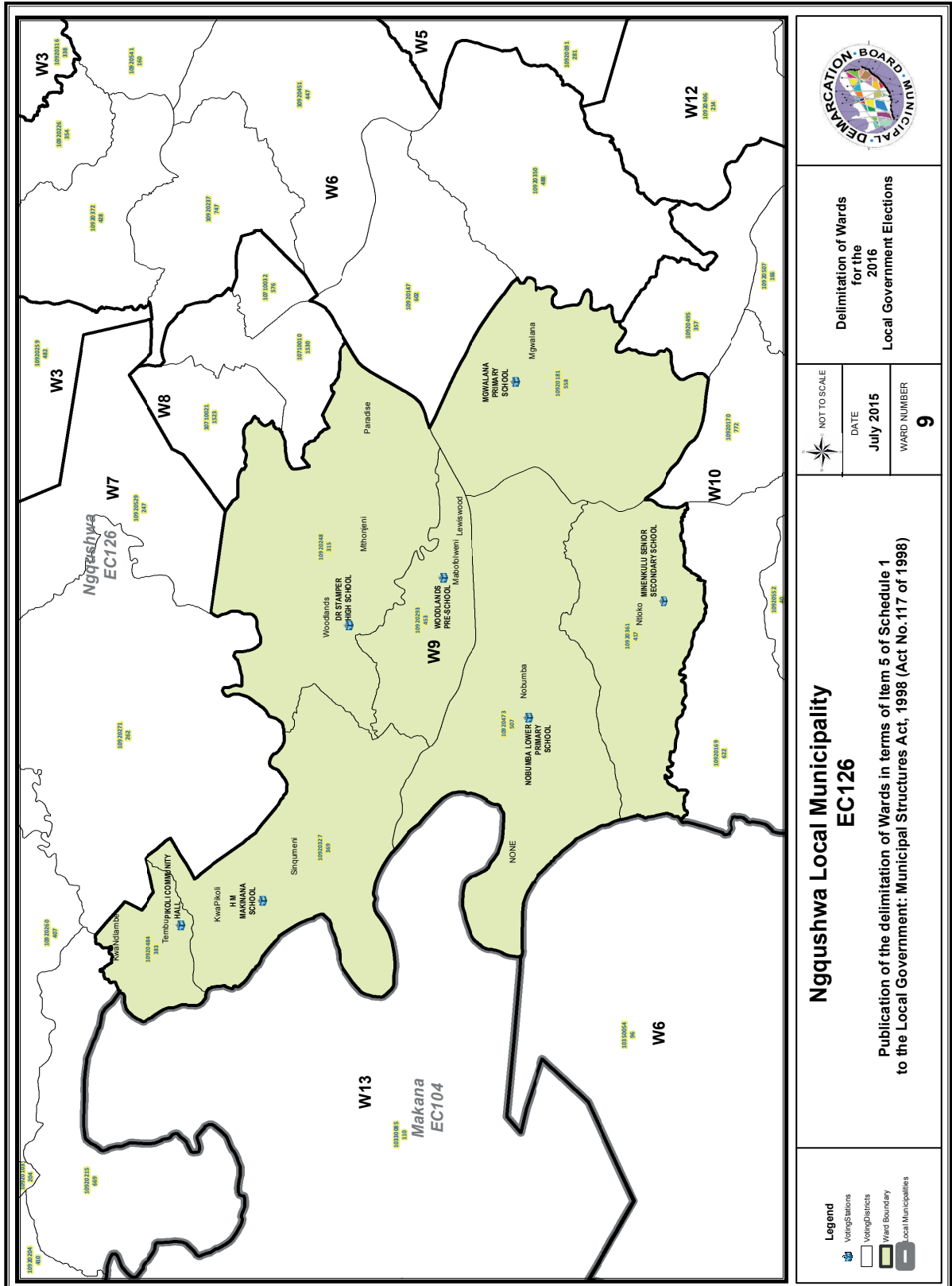
**Delimitation of Wards
for the
2016
Local Government Elections**







NOT TO SCALE
DATE July 2015
WARD NUMBER 8

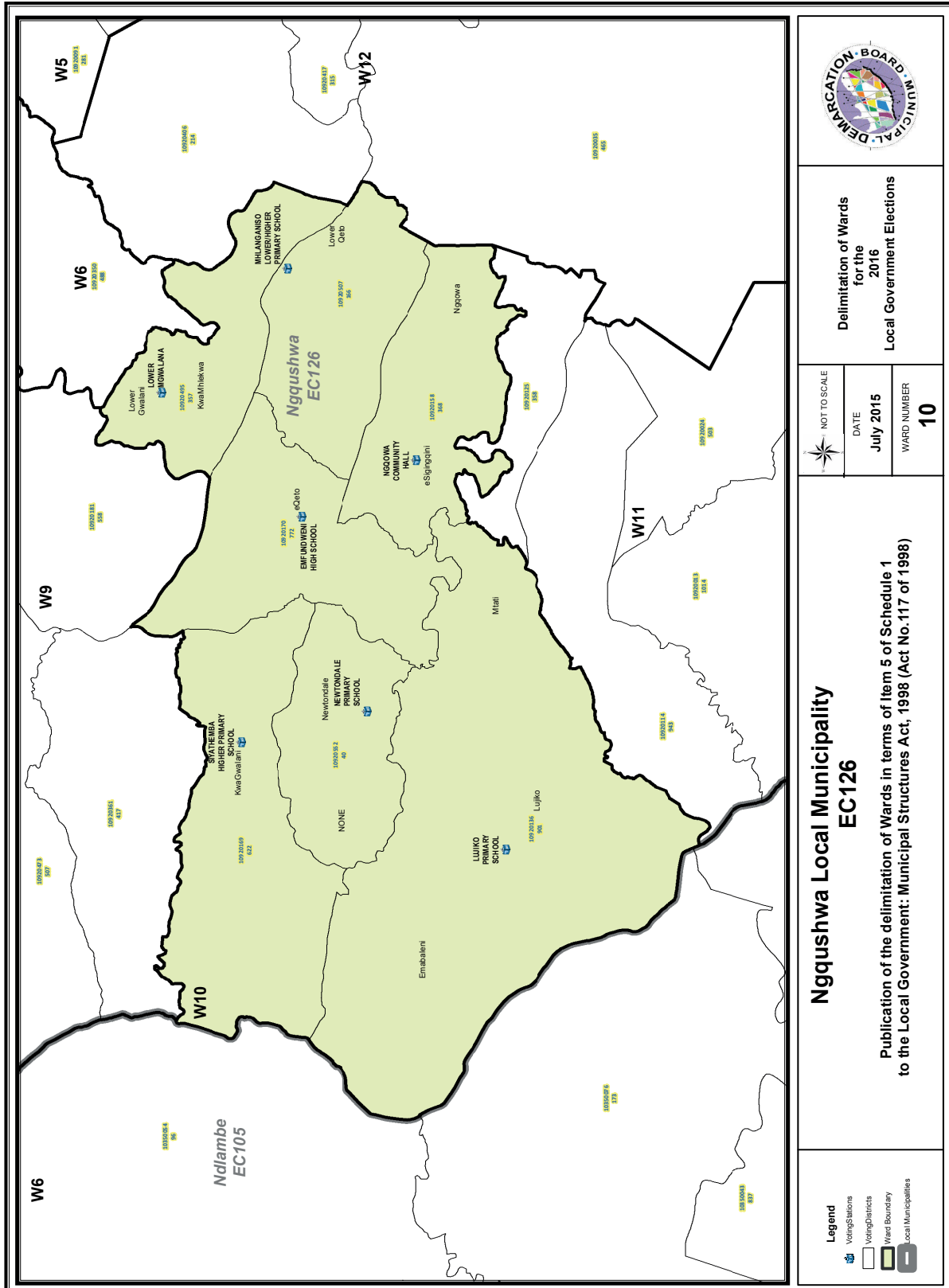
**Ngqushwa Local Municipality
EC126**

**Publication of the delimitation of Wards in terms of Item 5 of Schedule 1
to the Local Government: Municipal Structures Act, 1998 (Act No.117 of 1998)**

- Legend**
- Voting Stations
 - Voting Districts
 - Ward Boundary
 - Local Municipalities



	
Delimitation of Wards for the 2016 Local Government Elections	
NOT TO SCALE 	DATE July 2015
WARD NUMBER 9	
Ngqushwa Local Municipality EC126	
Publication of the delimitation of Wards in terms of Item 5 of Schedule 1 to the Local Government: Municipal Structures Act, 1998 (Act No.117 of 1998)	
Legend Voting Stations  Voting Districts  Ward Boundary  Local Municipalities 	



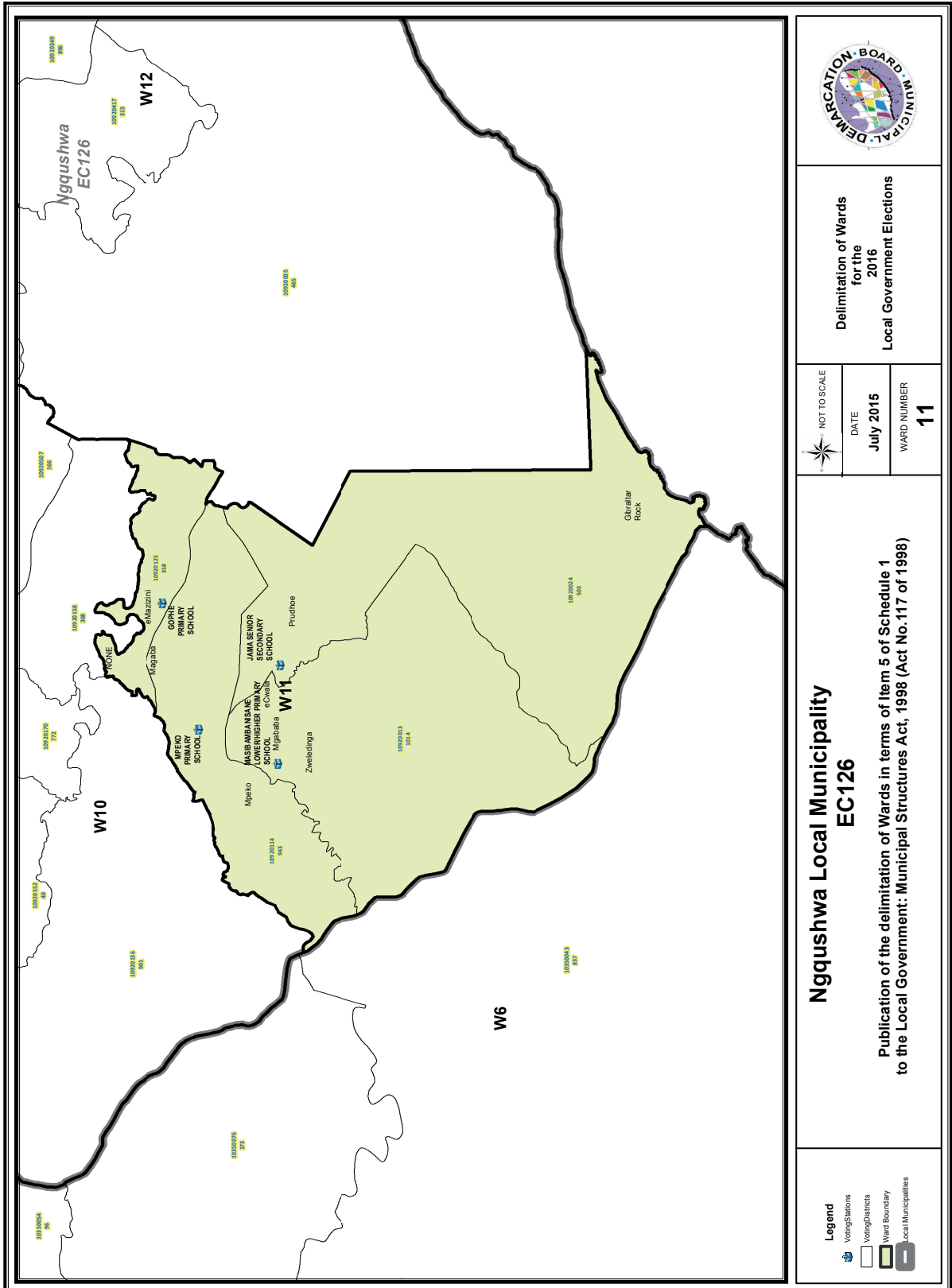
**Delimitation of Wards
for the
2016
Local Government Elections**

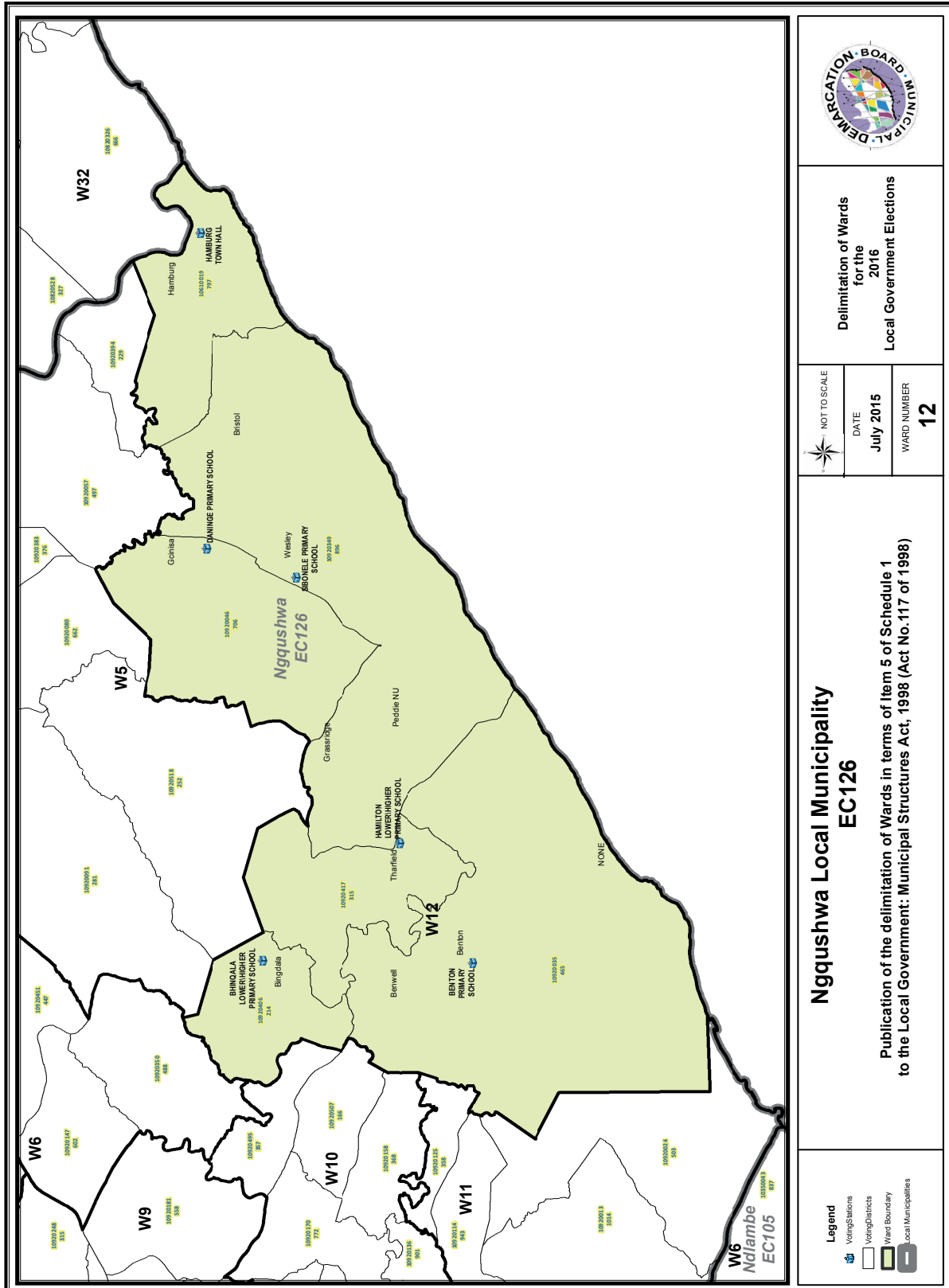
NOT TO SCALE
DATE July 2015
WARD NUMBER 10

**Ngqushwa Local Municipality
EC126**

**Publication of the delimitation of Wards in terms of Item 5 of Schedule 1
to the Local Government: Municipal Structures Act, 1998 (Act No.117 of 1998)**

- Legend**
- Voting Stations
 - Voting Districts
 - Ward Boundary
 - Local Municipalities





**Delimitation of Wards
for the
2016
Local Government Elections**

NOT TO SCALE
DATE
July 2015
WARD NUMBER
12

**Ngqushwa Local Municipality
EC126**

**Publication of the delimitation of Wards in terms of Item 5 of Schedule 1
to the Local Government: Municipal Structures Act, 1998 (Act No.117 of 1998)**

- Legend**
- Voting Stations
 - Voting Districts
 - Ward Boundary
 - Local Municipalities

FORM/VORM MDB5

WARD DELIMITATION/

WYKSAFBAKENING

**OBJECTION IN TERMS OF ITEM 5(2) OF SCHEDULE 1 TO THE LOCAL GOVERNMENT:
MUNICIPAL STRUCTURES ACT, 1998**

**BESWAAR INGEVOLGE ITEM 5(2) VAN BYLAE 1 VAN DIE WET OP PLAASLIKE REGERING:
MUNISIPALE STRUKTURE, 1998**

Name of municipality/ Naam van Munisipaliteit :

Code/Kode :

**Name of aggrieved person/institution/Naam van beswaarde persoon/instelling :
.....**

**Contact person in case of an institution/ Kontak persoon in geval van 'n instelling:
.....**

Address/Adres:

Tel. number/ Tel. nommer:.....Cell number/ Selfoonnommer:

Email address:

PLEASE USE ADDITIONAL PAGE SHOULD THE ALTERNATIVE PROPOSALS BE MORE THAN THE FOLLOWING SPACE AVAILABLE.

I request the Municipal Demarcation Board to consider the following alternative proposals/ Ek versoek die Munisipale Afbakeningsraad om die volgende alternatiewe voorstelle te oorweeg:

Ward number/ Wyk nommer	The ward should comprise of the following voting districts (Provide voting district number and the number of voters in brackets e.g. VD1123456(1500)+VD345678(2500)=4000)/ Die wyk moet bestaan uit die volgende stemdistrikte: (Voorsien die stemdistriknommer en die getal geregistreerde kiesers as volg VD1123456(1500)+VD345678(2500)=4000)	Motivation /Motivering

I confirm that/ Ek bevestig dat:

- each cluster of voting districts form a contiguous ward/ die saamgevoegde stemdistrikte vorm 'n aaneenlopende wyk;
- the number of voters in each ward fall within the minimum and maximum of voters allowed per ward/ die getal kiesers in elke wyk is binne die minimum en maksimum getal wat per wyk toegelaat word;
- the proposed ward boundaries comply, in general, with the criteria/ die voorgestelde wyke voldoen in die algemeen aan die kriteria.

SIGNATURE

NAME AND SURNAME

DATE

IMPORTANT

Information

from Government Printing Works

Dear Valued Customers,

Government Printing Works has implemented rules for completing and submitting the electronic Adobe Forms when you, the customer, submits your notice request.

Please take note of these guidelines when completing your form.

GPW Business Rules

1. No hand written notices will be accepted for processing, this includes Adobe forms which have been completed by hand.
2. Notices can only be submitted in Adobe electronic form format to the email submission address submit.egazette@gpw.gov.za. This means that any notice submissions not on an Adobe electronic form that are submitted to this mailbox will be **rejected**. National or Provincial gazette notices, where the Z95 or Z95Prov must be an Adobe form but the notice content (body) will be an attachment.
3. Notices brought into GPW by "walk-in" customers on electronic media can only be submitted in Adobe electronic form format. This means that any notice submissions not on an Adobe electronic form that are submitted by the customer on electronic media will be **rejected**. National or Provincial gazette notices, where the Z95 or Z95Prov must be an Adobe form but the notice content (body) will be an attachment.
4. All customers who walk in to GPW that wish to submit a notice that is not on an electronic Adobe form will be routed to the Contact Centre where the customer will be taken through the completion of the form by a GPW representative. Where a customer walks into GPW with a stack of hard copy notices delivered by a messenger on behalf of a newspaper the messenger must be referred back to the sender as the submission does not adhere to the submission rules.
5. All notice submissions that do not comply with point 2 will be charged full price for the notice submission.
6. The current cut-off of all Gazette's remains unchanged for all channels. (Refer to the GPW website for submission deadlines – www.gpwonline.co.za)
7. Incorrectly completed forms and notices submitted in the wrong format will be rejected to the customer to be corrected and resubmitted. Assistance will be available through the Contact Centre should help be required when completing the forms. (012-748 6200 or email info.egazette@gpw.gov.za)
8. All re-submissions by customers will be subject to the above cut-off times.
9. All submissions and re-submissions that miss the cut-off will be rejected to the customer to be submitted with a new publication date.
10. Information on forms will be taken as the primary source of the notice to be published. Any instructions that are on the email body or covering letter that contradicts the notice form content will be ignored.

You are therefore advised that effective from **Monday, 18 May 2015** should you not comply with our new rules of engagement, all notice requests will be rejected by our new system.

Furthermore, the fax number **012- 748 6030** will also be **discontinued** from this date and customers will only be able to submit notice requests through the email address submit.egazette@gpw.gov.za.



Printed by and obtainable from the Government Printer, Bosman Street, Private Bag X85, Pretoria, 0001.
 Contact Centre Tel: 012-748 6200. eMail: info.egazette@gpw.gov.za
 Also available at the Legal Advisory Services, **Province of the Eastern Cape**, Private Bag X0047, Bisho, 5605.
 Tel. (040) 635-0052.