



PROVINCE OF THE EASTERN CAPE
IPHONDO LEMPUMA KOLONI
PROVINSIE OOS-KAAP

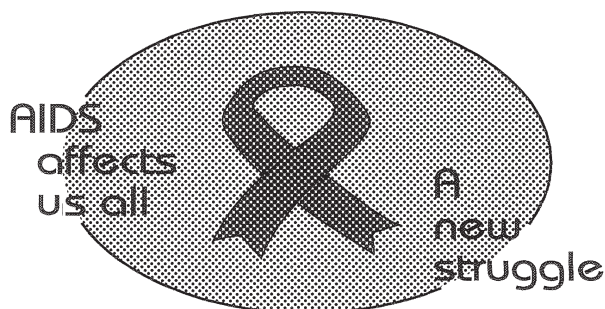
**Provincial Gazette
Igazethi Yephondo
Provinsiale Koerant
(Extraordinary)**

Vol. 22

BISHO/
KING WILLIAM'S TOWN, 22 JULY 2015

No. 3447

We all have the power to prevent AIDS



Prevention is the cure

**AIDS
HELPLINE**

0800 012 322

DEPARTMENT OF HEALTH

N.B. The Government Printing Works will not be held responsible for the quality of "Hard Copies" or "Electronic Files" submitted for publication purposes

ISSN 1682-4556



9 771682 455006

03447



IMPORTANT

Information

from Government Printing Works

Dear Valued Customers,

Government Printing Works has implemented rules for completing and submitting the electronic Adobe Forms when you, the customer, submits your notice request.

Please take note of these guidelines when completing your form.



GPW Business Rules

1. No hand written notices will be accepted for processing, this includes Adobe forms which have been completed by hand.
2. Notices can only be submitted in Adobe electronic form format to the email submission address submit.egazette@gpw.gov.za. This means that any notice submissions not on an Adobe electronic form that are submitted to this mailbox will be **rejected**. National or Provincial gazette notices, where the Z95 or Z95Prov must be an Adobe form but the notice content (body) will be an attachment.
3. Notices brought into GPW by "walk-in" customers on electronic media can only be submitted in Adobe electronic form format. This means that any notice submissions not on an Adobe electronic form that are submitted by the customer on electronic media will be **rejected**. National or Provincial gazette notices, where the Z95 or Z95Prov must be an Adobe form but the notice content (body) will be an attachment.
4. All customers who walk in to GPW that wish to submit a notice that is not on an electronic Adobe form will be routed to the Contact Centre where the customer will be taken through the completion of the form by a GPW representative. Where a customer walks into GPW with a stack of hard copy notices delivered by a messenger on behalf of a newspaper the messenger must be referred back to the sender as the submission does not adhere to the submission rules.
5. All notice submissions that do not comply with point 2 will be charged full price for the notice submission.
6. The current cut-off of all Gazette's remains unchanged for all channels. (Refer to the GPW website for submission deadlines – www.gpwonline.co.za)
7. Incorrectly completed forms and notices submitted in the wrong format will be rejected to the customer to be corrected and resubmitted. Assistance will be available through the Contact Centre should help be required when completing the forms. (012-748 6200 or email info.egazette@gpw.gov.za)
8. All re-submissions by customers will be subject to the above cut-off times.
9. All submissions and re-submissions that miss the cut-off will be rejected to the customer to be submitted with a new publication date.
10. Information on forms will be taken as the primary source of the notice to be published. Any instructions that are on the email body or covering letter that contradicts the notice form content will be ignored.

You are therefore advised that effective from **Monday, 18 May 2015** should you not comply with our new rules of engagement, all notice requests will be rejected by our new system.

Furthermore, the fax number **012- 748 6030** will also be **discontinued** from this date and customers will only be able to submit notice requests through the email address submit.egazette@gpw.gov.za.

DISCLAIMER:

Government Printing Works reserves the right to apply the 25% discount to all Legal and Liquor notices that comply with the business rules for notice submissions for publication in gazettes.

National, Provincial, Road Carrier Permits and Tender notices will pay the price as published in the Government Gazettes.

For any information, please contact the eGazette Contact Centre on 012-748 6200 or email info.egazette@gpw.gov.za

Table of Contents

<i>No.</i>		<i>Gazette No.</i>	<i>Page No.</i>
GENERAL NOTICES • ALGEMENE KENNISGEWINGS			
152	Local Government: Municipal Structures Act (117/1998): Municipal Demarcation Board: Delimitation of municipal wards: Sakhisizwe Local Municipality (EC138)	3447	4
152	Wet Op Plaaslike Regering: Munisipale Strukture (117/1998): Munisipale Afbakeningsraad: Afbakening van munisipale wyke: Sakhisizwe Local Municipality (EC138).....	3447	5

GENERAL NOTICES • ALGEMENE KENNISGEWINGS

NOTICE 152 OF 2015**MUNICIPAL DEMARCATION BOARD : DELIMITATION OF
MUNICIPAL WARDS IN TERMS OF THE LOCAL
GOVERNMENT : MUNICIPAL STRUCTURES ACT, 1998.****Sakhisizwe Local Municipality
EC138**

In terms of Item 5 (1) of Schedule 1 to the Local Government: Municipal Structures Act, 1998 (Act No. 117 of 1998) (the Act) the Municipal Demarcation Board hereby publishes its delimitation of wards for the above-mentioned municipality. Particulars of the delimitation are listed in the Schedule.

In terms of Item 5 (2) of Schedule 1 to the Act, any person aggrieved by the delimitation may, within 14 days of publication of this notice, submit objections in writing to:

The Municipal Demarcation Board
Private Bag X123
Centurion
0046

Fax: 086 5248643
Email: wards@demarcation.org.za

The attached form MDB 5 must please be used to object. The form is also available on www.demarcation.org.za

**MS JANE THUPANA
CHAIRPERSON: MUNICIPAL DEMARCATION BOARD****SCHEDULE**

In terms of section 18(3) of the Local Government: Municipal Structures Act, 1998 (Act 117 of 1998), the MEC responsible for local government has determined that the municipal council consists of 17 councillors.

After having consulted the Independent Electoral Commission, The Municipal Demarcation Board has delimited the municipality into 9 wards in terms of Schedule 1 of the Act.

The number of registered voters in each ward does not vary by more than fifteen percent from the norm. The norm was determined by dividing the total number of voters on the municipal segment of the national common voters roll, namely 29757 voters on 5 March 2014, by the number of wards in the municipality.

An overview map of the boundary of the municipality, with the boundaries of the wards within the municipality, and a map of each ward are attached. In case of a discrepancy between the map and this schedule, the map will prevail. The ward numbers, the voting districts and voting stations in each ward, and the number of voters are as follows:

KENNISGEWING 152 VAN 2015**MUNISIPALE AFBAKENINGSRAAD :
AFBAKENING VAN MUNISIPALE WYKE INGEVOLGE DIE WET OP
PLAASLIKE REGERING: MUNISIPALE STRUKTURE, 1998****Sakhisizwe Local Municipality****EC138**

Ingevolge Item 5(1) van Bylae 1 van die Wet op Plaaslike Regering: Munisipale Strukture, 1998 (Wet No. 117 van 1998) (die Wet) publiseer die Munisipale Afbakeningsraad hiermee sy afbakening van wyke vir die bogenaamde munisipaliteit. Besonderhede van die afbakening is vervat in die Bylae.

Ingevolge item 5(2) van Bylae 1 van die Wet, kan enige persoon wat gegrief is deur 'n afbakening binne 14 dae vanaf publikasie van hierdie kennisgewing skriftelike besware voorlê aan:

Die Munisipale Afbakeningsraad
Privaatsak X123
Centurion
0046

Faks: 086 5248643
E-pos: wards@demarcation.org.za

Die aangehegte vorm MDB5 moet asseblief gebruik word om beswaar aan te teken. Die vorm is ook beskikbaar op www.demarcation.org.za

MS JANE THUPANA
VOORSITTER : MUNISIPALE AFBAKENINGSRAAD

BYLAE

Ingevolge artikel 18(3) van die Wet op Plaaslike Regering: Munisipale Strukture, 1998 (Wet 117 van 1998) het die LUR vir plaaslike regering bepaal dat die munisipale raad bestaan uit 17 raadslede.

Na oorlegpleging met die Onafhanklike Verkiesingskommissie het die Munisipale Afbakeningsraad die munisipaliteit in 9 wyke afgebaken ingevolge Bylae 1 van die Wet.

Die getal geregistreerde kiesers in elke wyk, wyk nie meer as vyftien persent van die norm af nie. Die norm is bepaal deur die getal geregistreerde kiesers op die munisipale segment van die nasionale gemeenskaplike kieserslys, naamlik 29757 kiesers op 5 Maart 2014, deur die getal wyke in die munisipaliteit te deel.

'n Oorsigkaart van die munisipale grens met die grense van die wyke binne die munisipale grens, en 'n kaart van elke wyk, is aangeheg. Ingeval van 'n verskil tussen 'n kaart en hierdie bylae, sal die kaart geld.

Die wyknommers, die stembedistrikte en stemlokale in elke wyk, en die getal kiesers is as volg:

Ward 1 comprises of a total of 3762 registered voters.
Wyk 1 bestaan uit 'n totaal van 3762 geregistreerde kiesers.
 MIN VOTERS/KIESER 2810 NORM 3306 MAX VOTERS/KIESER 3802

VOTING DISTRICT No. STEMDISTRIK No.	VOTING STATION NAME STEMLOKAAL NAAM	NUMBER OF VOTERS GETAL KIESERS	SPLIT VD VERDEELDE SD
11250010	ELLIOT TOWN HALL	1890	
11250043	VUSUKHANYO PUBLIC PPRIMARY SCHOOL	927	
11380025	UMHLWAZI VILLAGE SCHOOL	131	
11380047	METHODIST CHURCH OF SOUTH GUBENXA	235	
11380058	RYNO STATE AIDED SCHOOL	276	
11380069	BOSSIESKLOOF FARM	26	
11380014	ELLIOT COUNTRY CLUB	277	

Ward 2 comprises of a total of 3674 registered voters.
Wyk 2 bestaan uit 'n totaal van 3674 geregistreerde kiesers.
 MIN VOTERS/KIESER 2810 NORM 3306 MAX VOTERS/KIESER 3802

VOTING DISTRICT No. STEMDISTRIK No.	VOTING STATION NAME STEMLOKAAL NAAM	NUMBER OF VOTERS GETAL KIESERS	SPLIT VD VERDEELDE SD
11250032	MASIBAMBANE COMMUNITY HALL	1604	
11250021	SIYAHLANGULA JUNIOR SECONDARY SCHOOL	2070	

Ward 3 comprises of a total of 3677 registered voters.
Wyk 3 bestaan uit 'n totaal van 3677 geregistreerde kiesers.
 MIN VOTERS/KIESER 2810 NORM 3306 MAX VOTERS/KIESER 3802

VOTING DISTRICT No. STEMDISTRIK No.	VOTING STATION NAME STEMLOKAAL NAAM	NUMBER OF VOTERS GETAL KIESERS	SPLIT VD VERDEELDE SD
11460192	CALA PASS JUNIOR SECONDARY SCHOOL	374	
11460170	SIFONONDILE JUNIOR SECONDARY SCHOOL	378	
11250054	MASAKHE PRE-SCHOOL	627	
11460473	NOBUNTU JUNIOR SECONDARY SCHOOL	241	
11460181	QIBA JUNIOR SECONDARY SCHOOL	282	
11460204	MGWALANA JUNIOR SECONDARY SCHOOL	308	
11460215	MTHETHUVUMILE JUNIOR SECONDARY SCHOOL	608	
11460226	MOBILE VOTING STATION (ST GABRIEL JSS)	146	
11460226	MOBILE VOTING STATION (SIPAFENI JSS)	146	
11460248	LUSINDISO JUNIOR SECONDARY SCHOOL	201	
11570644	LINGELETHU JUNIOR SECONDARY SCHOOL	373	

11460462 MLUNGISI JUNIOR SECONDARY SCHOOL 139

Ward 4 comprises of a total of 3005 registered voters.
Wyk 4 bestaan uit 'n totaal van 3005 geregistreerde kiesers.
 MIN VOTERS/KIESER 2810 NORM 3306 MAX VOTERS/KIESER 3802

VOTING DISTRICT No. STEMDISTRIK No.	VOTING STATION NAME STEMLOKAAL NAAM	NUMBER OF VOTERS GETAL KIESERS	SPLIT VD VERDEELDE SD
11230030	LM SILINGELA SCHOOL	949	
11230063	OLD CALA HIGH SCHOOL	420	
11230018	CALA TOWN HALL	1636	

Ward 5 comprises of a total of 3537 registered voters.
Wyk 5 bestaan uit 'n totaal van 3537 geregistreerde kiesers.
 MIN VOTERS/KIESER 2810 NORM 3306 MAX VOTERS/KIESER 3802

VOTING DISTRICT No. STEMDISTRIK No.	VOTING STATION NAME STEMLOKAAL NAAM	NUMBER OF VOTERS GETAL KIESERS	SPLIT VD VERDEELDE SD
11460136	ST.JOHNS APOSTOLIC CHURCH	829	
11230041	KANYISA SPECIAL SCHOOL	748	
11230029	NEW HORIZON	1960	

Ward 6 comprises of a total of 3204 registered voters.
Wyk 6 bestaan uit 'n totaal van 3204 geregistreerde kiesers.
 MIN VOTERS/KIESER 2810 NORM 3306 MAX VOTERS/KIESER 3802

VOTING DISTRICT No. STEMDISTRIK No.	VOTING STATION NAME STEMLOKAAL NAAM	NUMBER OF VOTERS GETAL KIESERS	SPLIT VD VERDEELDE SD
11460495	ANGLICAN CHURCH	142	
11460169	LOWER CALA JUNIOR SECONDARY SCHOOL	386	
11460530	PHAKAMANI JUNIOR SECONDARY SCHOOL	355	
11460529	MANZANA CRECHE	262	
11460507	LAPESINI METHODIST CHURCH OF S.A	289	
11460114	TSENGIWE JUNIOR SECONDARY SCHOOL	509	
11460259	MNXE JUNIOR SECONDARY SCHOOL	295	
11460260	UPPER CALA JUNIOR SECONDARY SCHOOL	376	
11460518	GUATA JUNIOR SECONDARY SCHOOL	590	

Ward 7 comprises of a total of 2961 registered voters.
Wyk 7 bestaan uit 'n totaal van 2961 geregistreerde kiesers.
 MIN VOTERS/KIESER 2810 NORM 3306 MAX VOTERS/KIESER 3802

VOTING DISTRICT No. STEMDISTRIK No.	VOTING STATION NAME STEMLOKAAL NAAM	NUMBER OF VOTERS GETAL KIESERS	SPLIT VD VERDEELDE SD
--	--	-----------------------------------	--------------------------

11460552	RABELSKLOOF JUNIOR SECONDARY SCHOOL	414
11460293	NGXUMZA JUNIOR SECONDARY SCHOOL	208
11460608	NONTEMBISO JUNIOR SECONDARY SCHOOL	319
11460563	NONKANYISO JUNIOR SECONDARY SCHOOL	359
11460316	UPPER NDWANA JUNIOR SECONDARY SCHOOL	485
11460158	MCEULA SENIOR SECONDARY SCHOOL	713
11460057	INDWANA JUNIOR SECONDARY SCHOOL	463

Ward 8	comprises of a total of 2885	registered voters.
Wyk 8	bestaan uit 'n totaal van 2885	geregistreeerde kiesers.
MIN VOTERS/KIESER	2810	NORM 3306
		MAX VOTERS/KIESER 3802

VOTING DISTRICT No. STEMDISTRIK No.	VOTING STATION NAME STEMLOKAAL NAAM	NUMBER OF VOTERS GETAL KIESERS	SPLIT VD VERDEELDE SD
11460574	NDYAVU	120	
11460024	SEPLAN MISSION JUNIOR SECONDARY SCHOOL	582	
11460035	A M ZANTSI SENIOR SECONDARY SCHOOL	557	
11460394	SIGWELA JUNIOR SECONDARY SCHOOL	217	
11460305	UPPER MTHINGWEVU JUNIOR SECONDARY SCHOOL	463	
11460327	UPPER LANGANCI JUNIOR SECONDARY SCHOOL	179	
11460046	B.B.MDLEDLE JUNIOR SECONDARY SCHOOL	482	
11460091	UPPER LUFUTA JUNIOR SECONDARY SCHOOL	285	

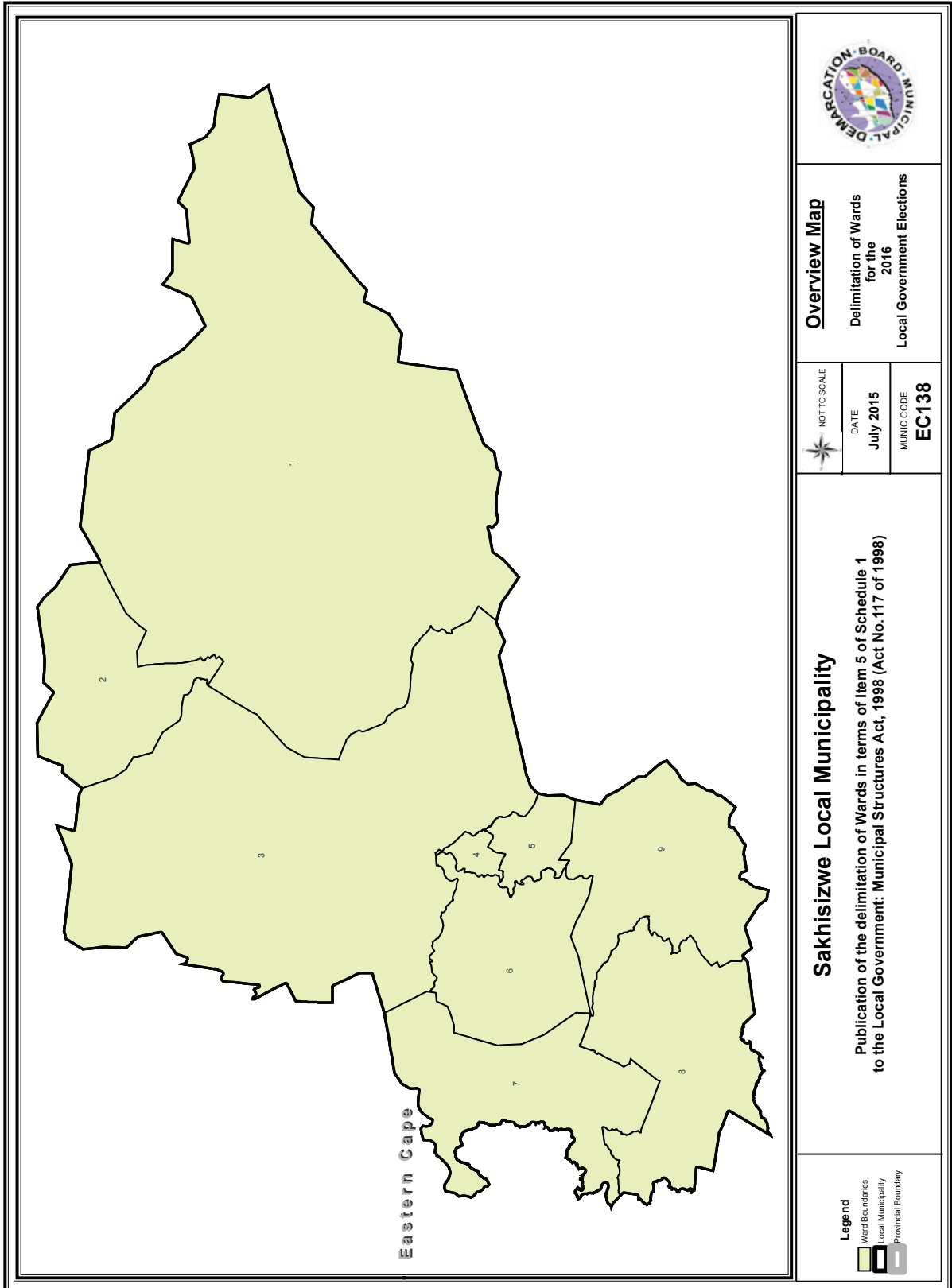
Ward 9	comprises of a total of 3052	registered voters.
Wyk 9	bestaan uit 'n totaal van 3052	geregistreeerde kiesers.
MIN VOTERS/KIESER	2810	NORM 3306
		MAX VOTERS/KIESER 3802

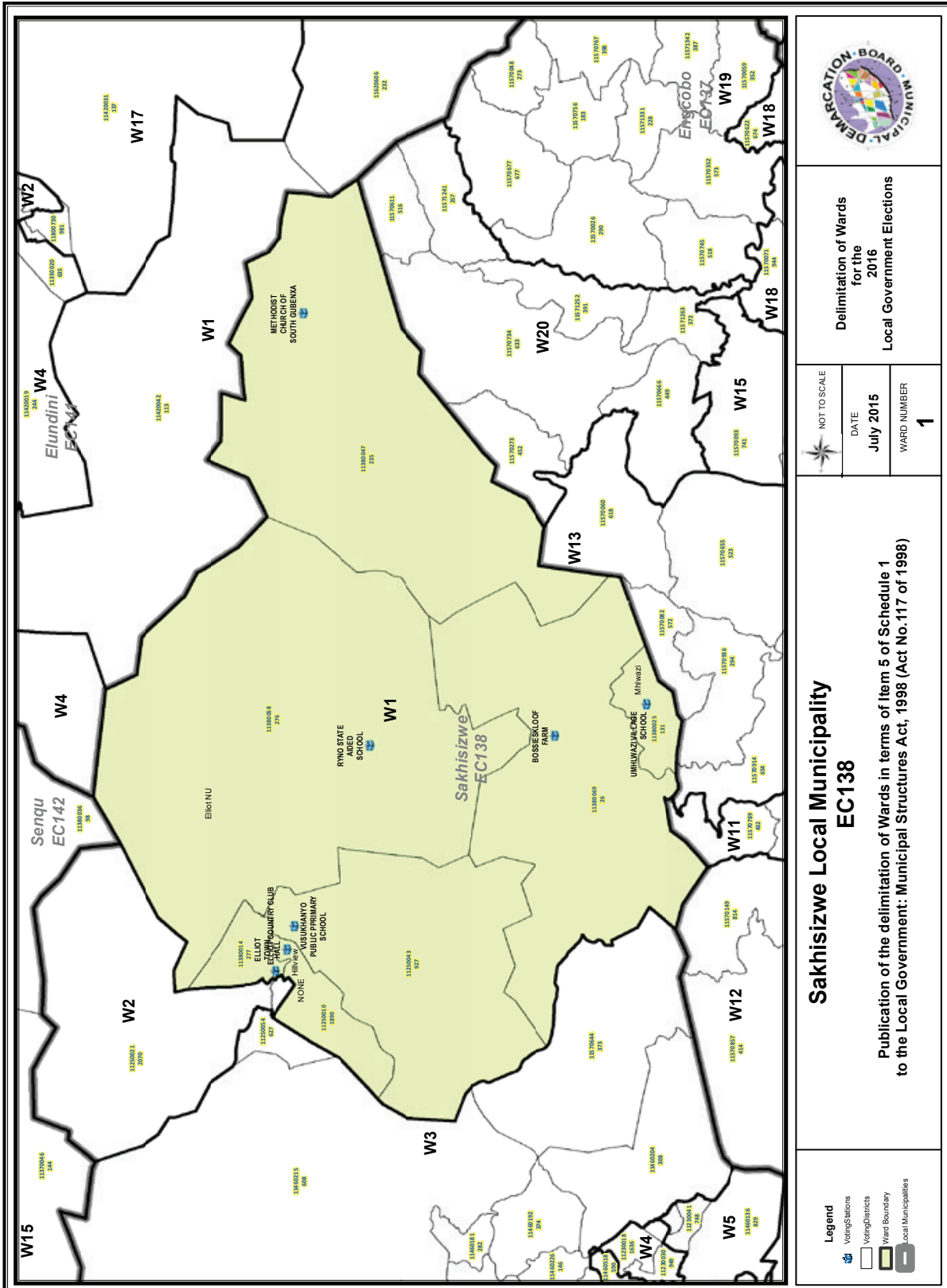
VOTING DISTRICT No. STEMDISTRIK No.	VOTING STATION NAME STEMLOKAAL NAAM	NUMBER OF VOTERS GETAL KIESERS	SPLIT VD VERDEELDE SD
11460068	LOWER LANGANCI JUNIOR SECONDARY SCHOOL	204	
11460439	MBEULA JUNIOR SECONDARY SCHOOL	154	
11460125	MBENGE JUNIOR SECONDARY SCHOOL	747	
11460349	MBODLANA JUNIOR SECONDARY SCHOOL	282	
11460103	HOTA JUNIOR SECONDARY SCHOOL	258	
11460406	KHAYALETHU SENIOR PRIMARY SCHOOL	236	
11460428	PANATYIPHU HOUSE	209	
11460585	SIGANGA	193	
11460079	LOWER LUFUTA JUNIOR SECONDARY SCHOOL	325	
11460338	NYALASA SENIOR SECONDARY SCHOOL	266	

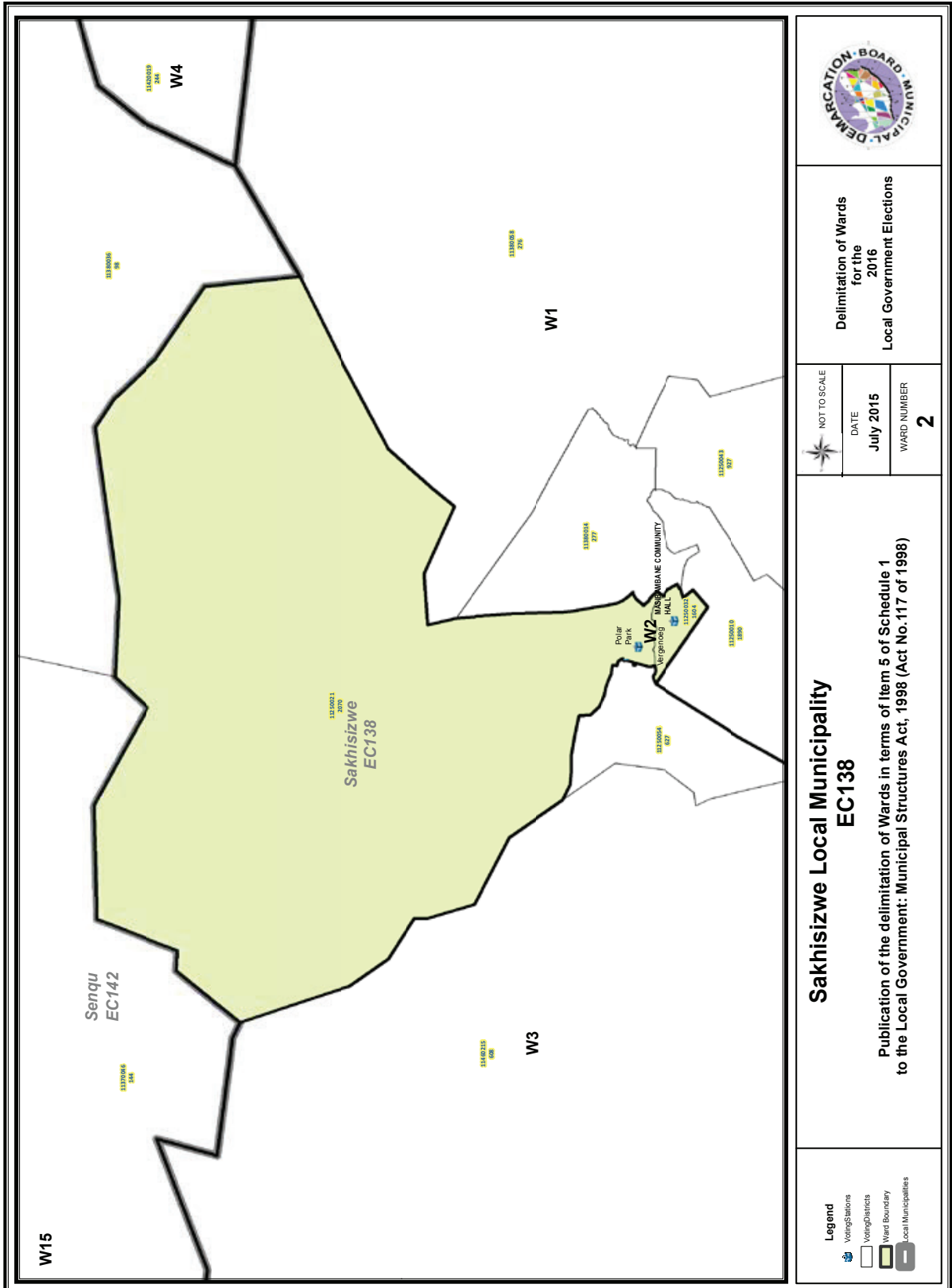
11460417

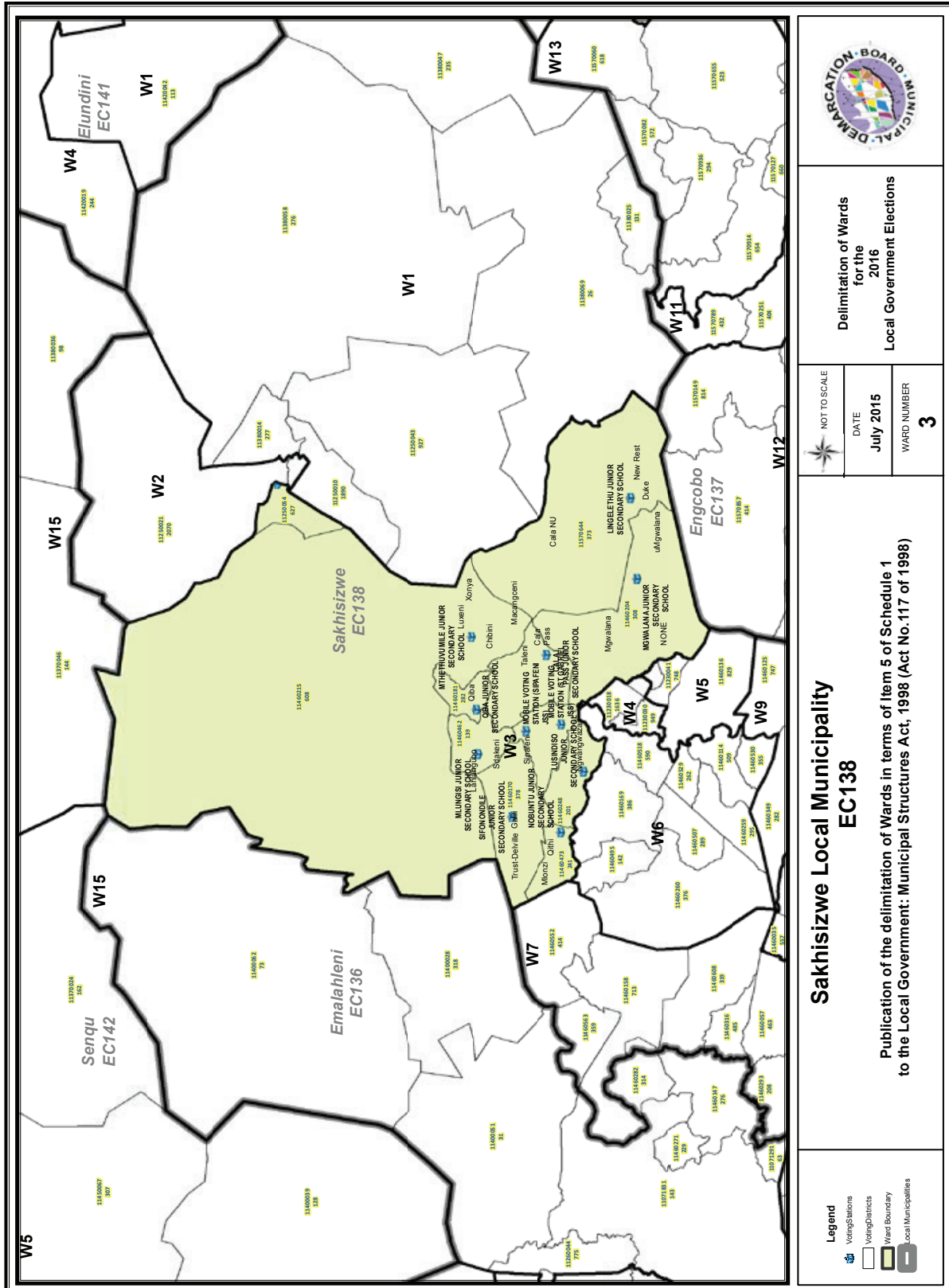
NOKWAKHA PRE-SCHOOL

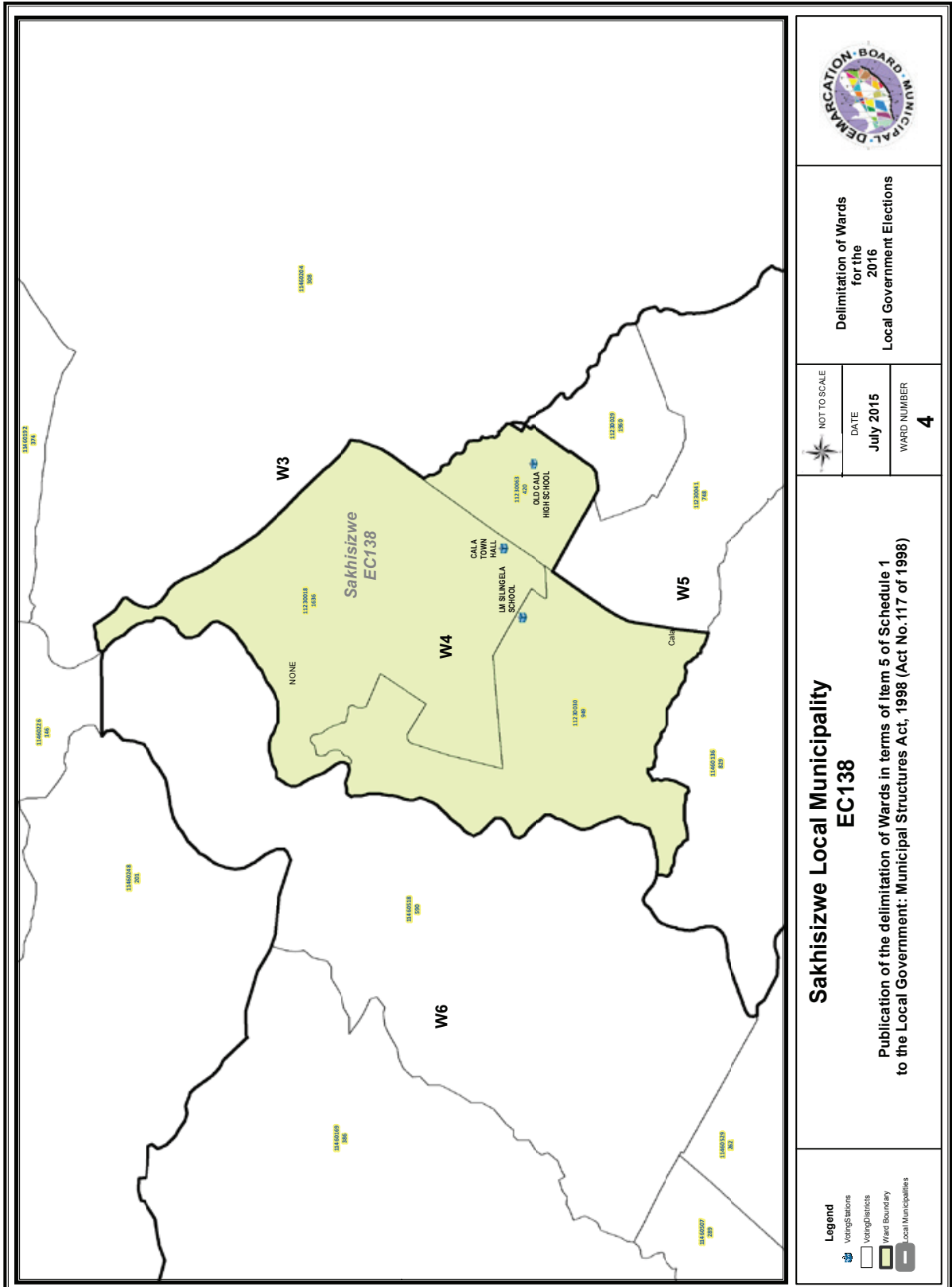
178









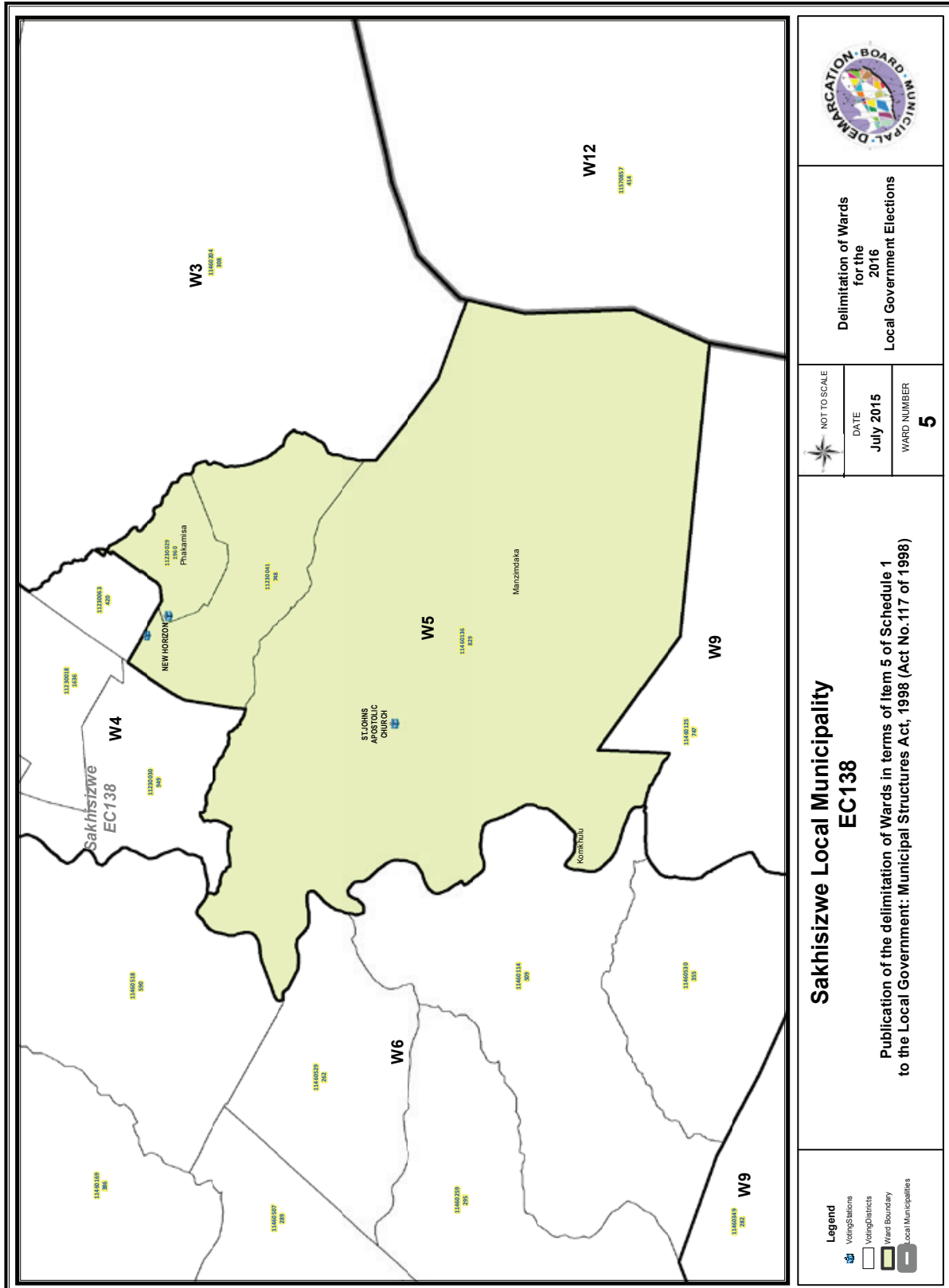


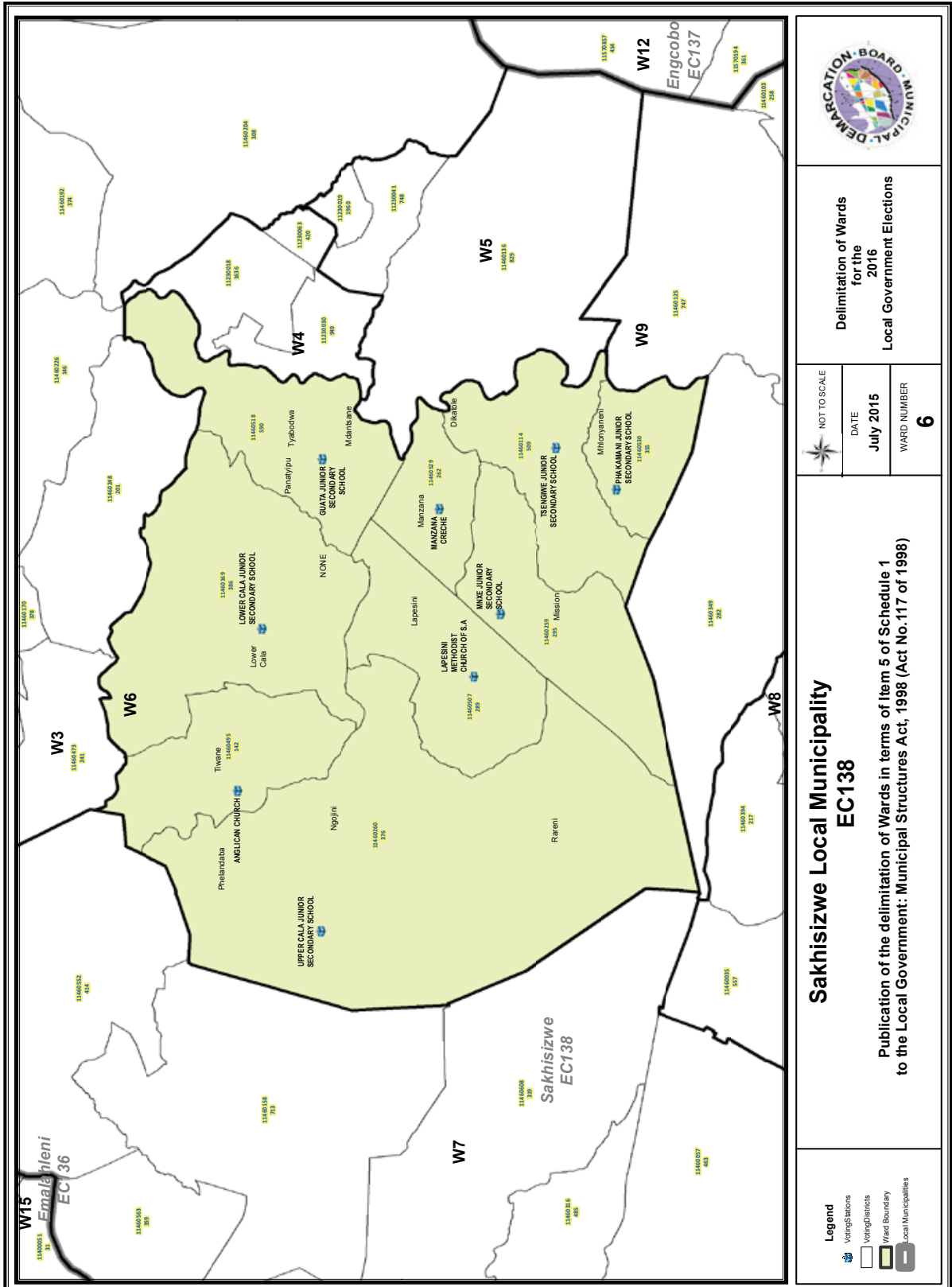
Delimitation of Wards
for the
2016
Local Government Elections







NOT TO SCALE
DATE
July 2015
WARD NUMBER
4

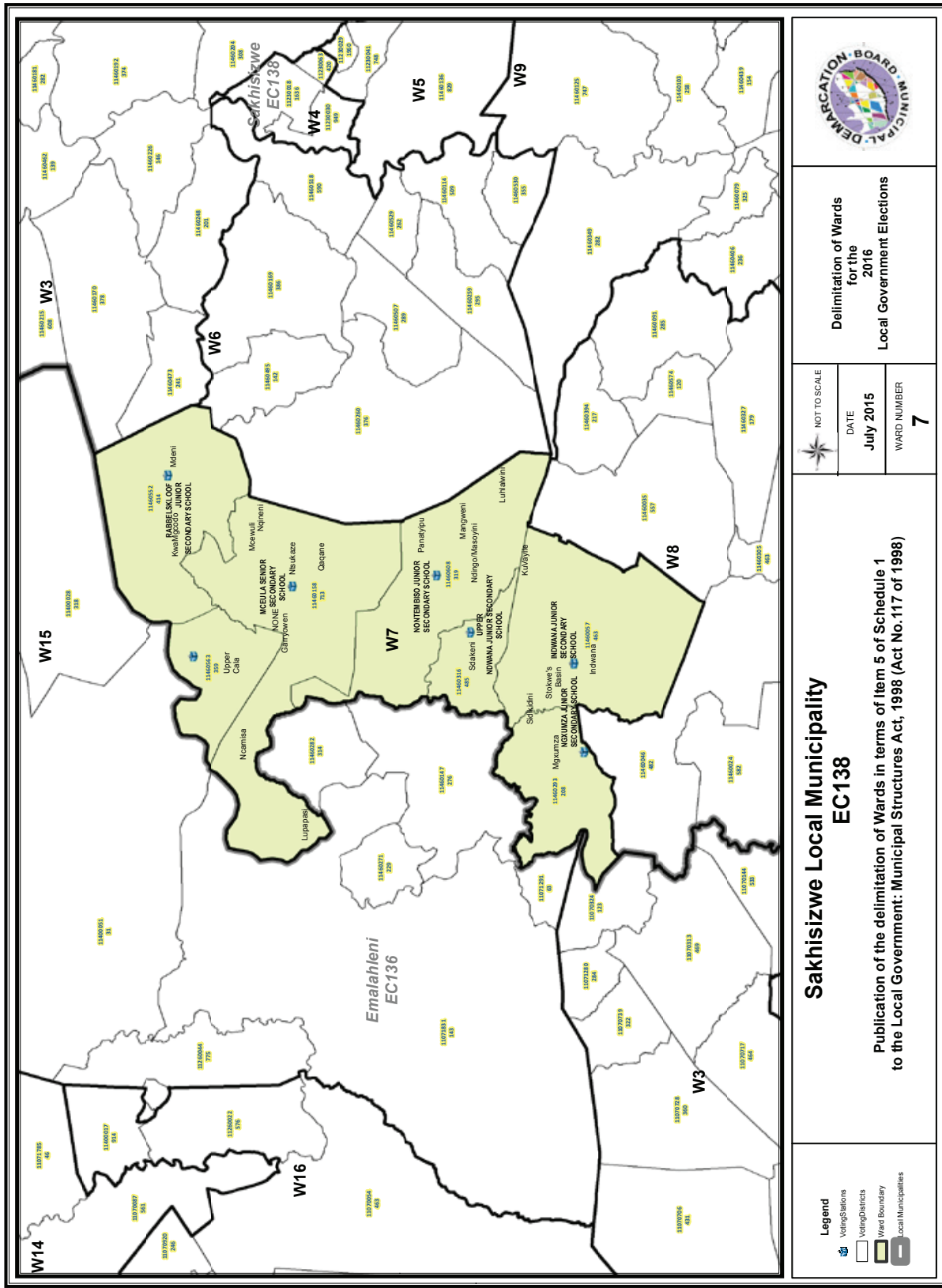
**Sakhisizwe Local Municipality
EC138**
Publication of the delimitation of Wards in terms of Item 5 of Schedule 1
to the Local Government: Municipal Structures Act, 1998 (Act No.117 of 1998)

- Legend
- Voting Stations
- Voting Districts
- Ward Boundary
- Local Municipalities





	
Delimitation of Wards for the 2016 Local Government Elections	
NOT TO SCALE 	DATE July 2015 WARD NUMBER 6
Sakhizwe Local Municipality EC138 Publication of the delimitation of Wards in terms of Item 5 of Schedule 1 to the Local Government: Municipal Structures Act, 1998 (Act No.117 of 1998)	
Legend Voting Stations  Voting Districts  Ward Boundary  Local Municipalities 	



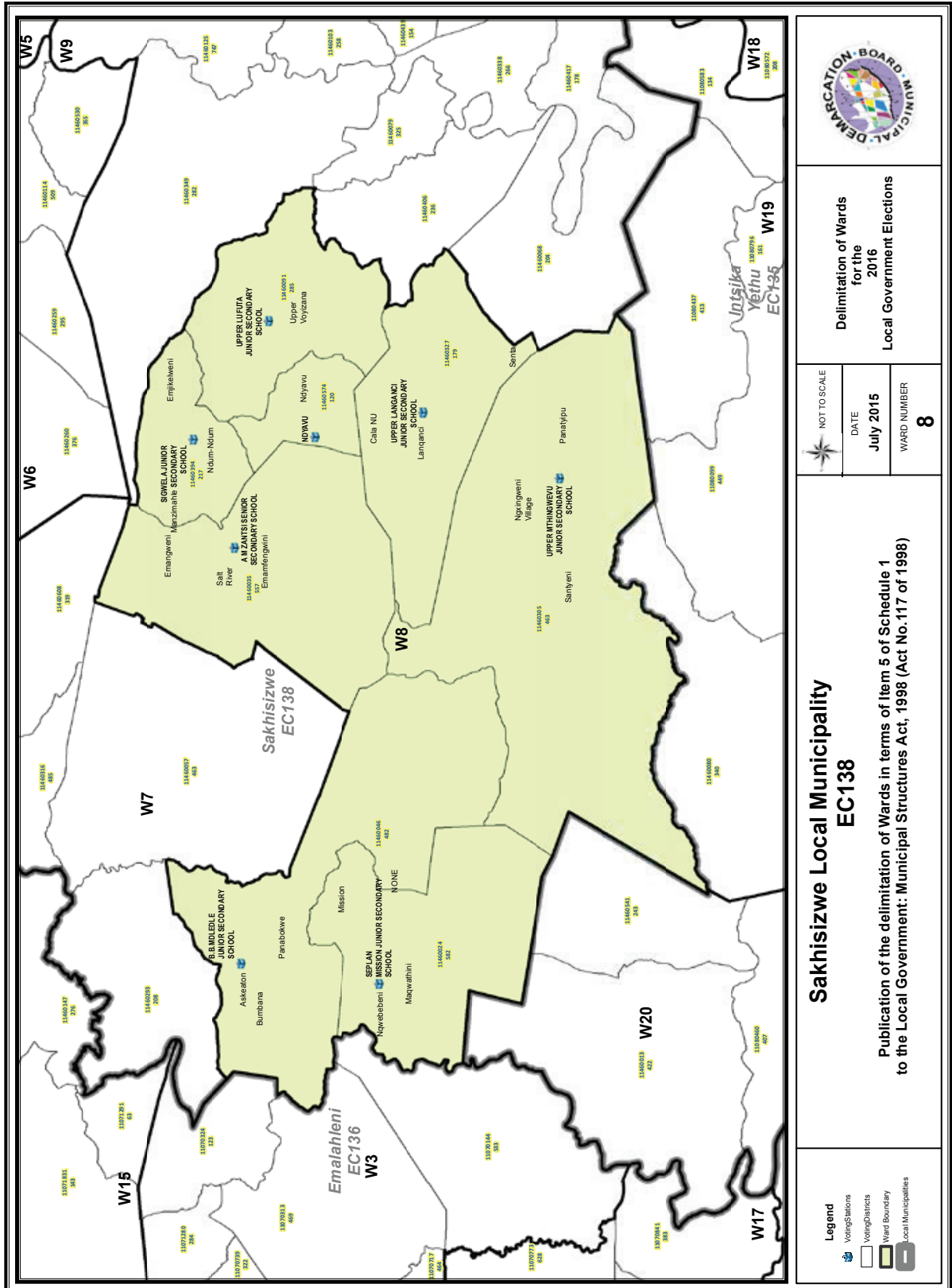
Sakhisizwe Local Municipality EC-138

Publication of the delimitation of Wards in terms of Item 5 of Schedule 1 to the Local Government: Municipal Structures Act, 1998 (Act No. 117 of 1998)

Delimitation of Wards for the 2016 Local Government Elections

Legend
 Voting Stations
 Voting Districts
 Ward Boundary
 Local Municipalities

NOT TO SCALE
 DATE: July 2015
 WARD NUMBER: 7



Legend

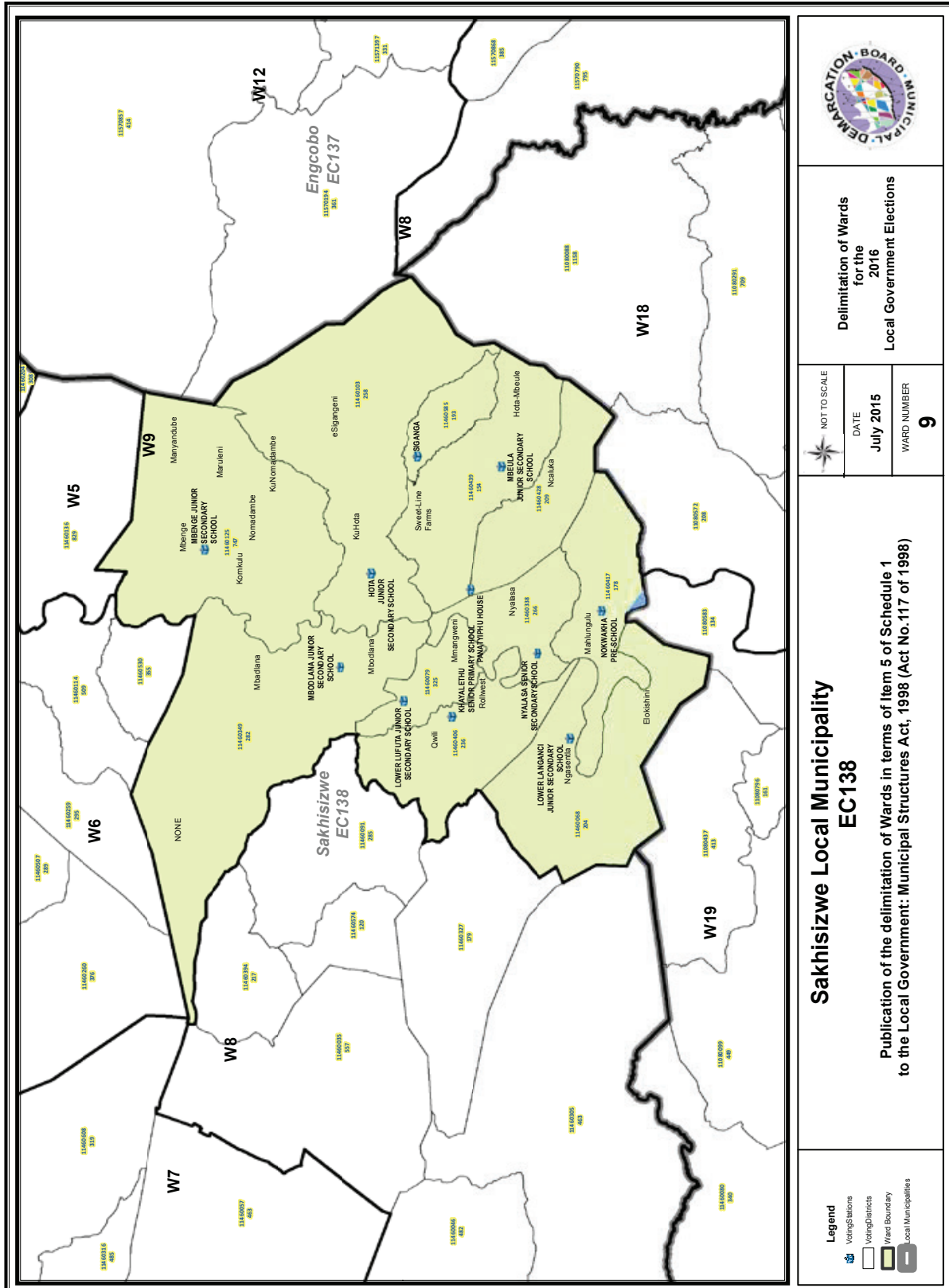
- Voting Stations
- Voting Districts
- Ward Boundary
- Local Municipalities

Sakhisizwe Local Municipality
EC138

Publication of the delimitation of Wards in terms of Item 5 of Schedule 1 to the Local Government: Municipal Structures Act, 1998 (Act No. 117 of 1998)

Delimitation of Wards for the 2016 Local Government Elections

NOT TO SCALE
DATE July 2015
WARD NUMBER 8



FORM/VORM MDB5

WARD DELIMITATION/

WYKSAFBAKENING

**OBJECTION IN TERMS OF ITEM 5(2) OF SCHEDULE 1 TO THE LOCAL GOVERNMENT:
MUNICIPAL STRUCTURES ACT, 1998**

**BESWAAR INGEVOLGE ITEM 5(2) VAN BYLAE 1 VAN DIE WET OP PLAASLIKE REGERING:
MUNISIPALE STRUKTURE, 1998**

Name of municipality/ Naam van Munisipaliteit :

Code/Kode :

**Name of aggrieved person/institution/Naam van beswaarde persoon/instelling :
.....**

**Contact person in case of an institution/ Kontak persoon in geval van 'n instelling:
.....**

Address/Adres:

Tel. number/ Tel. nommer:.....Cell number/ Selfoonnommer:

Email address:

PLEASE USE ADDITIONAL PAGE SHOULD THE ALTERNATIVE PROPOSALS BE MORE THAN THE FOLLOWING SPACE AVAILABLE.

I request the Municipal Demarcation Board to consider the following alternative proposals/ Ek versoek die Munisipale Afbakeningsraad om die volgende alternatiewe voorstelle te oorweeg:

Ward number/ Wyk nommer	The ward should comprise of the following voting districts (Provide voting district number and the number of voters in brackets e.g. VD1123456(1500)+VD345678(2500)=4000)/ Die wyk moet bestaan uit die volgende stemdistrikte: (Voorsien die stemdistriknommer en die getal geregistreerde kiesers as volg VD1123456(1500)+VD345678(2500)=4000)	Motivation /Motivering

I confirm that/ Ek bevestig dat:

- each cluster of voting districts form a contiguous ward/ die saamgevoegde stemdistrikte vorm 'n aaneenlopende wyk;
- the number of voters in each ward fall within the minimum and maximum of voters allowed per ward/ die getal kiesers in elke wyk is binne die minimum en maksimum getal wat per wyk toegelaat word;
- the proposed ward boundaries comply, in general, with the criteria/ die voorgestelde wyke voldoen in die algemeen aan die kriteria.

SIGNATURE

NAME AND SURNAME

DATE

IMPORTANT

Information

from Government Printing Works

Dear Valued Customers,

Government Printing Works has implemented rules for completing and submitting the electronic Adobe Forms when you, the customer, submits your notice request.

Please take note of these guidelines when completing your form.

GPW Business Rules

1. No hand written notices will be accepted for processing, this includes Adobe forms which have been completed by hand.
2. Notices can only be submitted in Adobe electronic form format to the email submission address submit.egazette@gpw.gov.za. This means that any notice submissions not on an Adobe electronic form that are submitted to this mailbox will be **rejected**. National or Provincial gazette notices, where the Z95 or Z95Prov must be an Adobe form but the notice content (body) will be an attachment.
3. Notices brought into GPW by "walk-in" customers on electronic media can only be submitted in Adobe electronic form format. This means that any notice submissions not on an Adobe electronic form that are submitted by the customer on electronic media will be **rejected**. National or Provincial gazette notices, where the Z95 or Z95Prov must be an Adobe form but the notice content (body) will be an attachment.
4. All customers who walk in to GPW that wish to submit a notice that is not on an electronic Adobe form will be routed to the Contact Centre where the customer will be taken through the completion of the form by a GPW representative. Where a customer walks into GPW with a stack of hard copy notices delivered by a messenger on behalf of a newspaper the messenger must be referred back to the sender as the submission does not adhere to the submission rules.
5. All notice submissions that do not comply with point 2 will be charged full price for the notice submission.
6. The current cut-off of all Gazette's remains unchanged for all channels. (Refer to the GPW website for submission deadlines – www.gpwonline.co.za)
7. Incorrectly completed forms and notices submitted in the wrong format will be rejected to the customer to be corrected and resubmitted. Assistance will be available through the Contact Centre should help be required when completing the forms. (012-748 6200 or email info.egazette@gpw.gov.za)
8. All re-submissions by customers will be subject to the above cut-off times.
9. All submissions and re-submissions that miss the cut-off will be rejected to the customer to be submitted with a new publication date.
10. Information on forms will be taken as the primary source of the notice to be published. Any instructions that are on the email body or covering letter that contradicts the notice form content will be ignored.

You are therefore advised that effective from **Monday, 18 May 2015** should you not comply with our new rules of engagement, all notice requests will be rejected by our new system.

Furthermore, the fax number **012- 748 6030** will also be **discontinued** from this date and customers will only be able to submit notice requests through the email address submit.egazette@gpw.gov.za.



Printed by and obtainable from the Government Printer, Bosman Street, Private Bag X85, Pretoria, 0001.
 Contact Centre Tel: 012-748 6200. eMail: info.egazette@gpw.gov.za
 Also available at the Legal Advisory Services, **Province of the Eastern Cape**, Private Bag X0047, Bisho, 5605.
 Tel. (040) 635-0052.