



PROVINCE OF THE EASTERN CAPE
IPHONDO LEMPUMA KOLONI
PROVINSIE OOS-KAAP

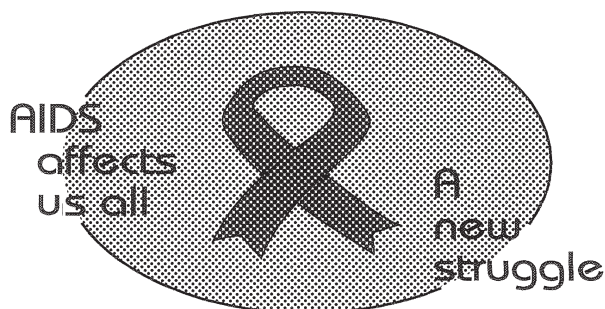
**Provincial Gazette
Igazethi Yephondo
Provinsiale Koerant
(Extraordinary)**

Vol. 22

BISHO/
KING WILLIAM'S TOWN, 22 JULY 2015

No. 3449

We all have the power to prevent AIDS



**AIDS
HELPLINE**

0800 012 322

DEPARTMENT OF HEALTH

Prevention is the cure

N.B. The Government Printing Works will not be held responsible for the quality of "Hard Copies" or "Electronic Files" submitted for publication purposes

ISSN 1682-4556



9 771682 455006

03449



IMPORTANT

Information

from Government Printing Works

Dear Valued Customers,

Government Printing Works has implemented rules for completing and submitting the electronic Adobe Forms when you, the customer, submits your notice request.

Please take note of these guidelines when completing your form.



GPW Business Rules

1. No hand written notices will be accepted for processing, this includes Adobe forms which have been completed by hand.
2. Notices can only be submitted in Adobe electronic form format to the email submission address submit.egazette@gpw.gov.za. This means that any notice submissions not on an Adobe electronic form that are submitted to this mailbox will be **rejected**. National or Provincial gazette notices, where the Z95 or Z95Prov must be an Adobe form but the notice content (body) will be an attachment.
3. Notices brought into GPW by "walk-in" customers on electronic media can only be submitted in Adobe electronic form format. This means that any notice submissions not on an Adobe electronic form that are submitted by the customer on electronic media will be **rejected**. National or Provincial gazette notices, where the Z95 or Z95Prov must be an Adobe form but the notice content (body) will be an attachment.
4. All customers who walk in to GPW that wish to submit a notice that is not on an electronic Adobe form will be routed to the Contact Centre where the customer will be taken through the completion of the form by a GPW representative. Where a customer walks into GPW with a stack of hard copy notices delivered by a messenger on behalf of a newspaper the messenger must be referred back to the sender as the submission does not adhere to the submission rules.
5. All notice submissions that do not comply with point 2 will be charged full price for the notice submission.
6. The current cut-off of all Gazette's remains unchanged for all channels. (Refer to the GPW website for submission deadlines – www.gpwonline.co.za)
7. Incorrectly completed forms and notices submitted in the wrong format will be rejected to the customer to be corrected and resubmitted. Assistance will be available through the Contact Centre should help be required when completing the forms. (012-748 6200 or email info.egazette@gpw.gov.za)
8. All re-submissions by customers will be subject to the above cut-off times.
9. All submissions and re-submissions that miss the cut-off will be rejected to the customer to be submitted with a new publication date.
10. Information on forms will be taken as the primary source of the notice to be published. Any instructions that are on the email body or covering letter that contradicts the notice form content will be ignored.

You are therefore advised that effective from **Monday, 18 May 2015** should you not comply with our new rules of engagement, all notice requests will be rejected by our new system.

Furthermore, the fax number **012- 748 6030** will also be **discontinued** from this date and customers will only be able to submit notice requests through the email address submit.egazette@gpw.gov.za.

DISCLAIMER:

Government Printing Works reserves the right to apply the 25% discount to all Legal and Liquor notices that comply with the business rules for notice submissions for publication in gazettes.

National, Provincial, Road Carrier Permits and Tender notices will pay the price as published in the Government Gazettes.

For any information, please contact the eGazette Contact Centre on 012-748 6200 or email info.egazette@gpw.gov.za

Table of Contents

<i>No.</i>		<i>Gazette No.</i>	<i>Page No.</i>
PROVINCIAL NOTICES • PROVINSIALE KENNISGEWINGS			
61	Local Government: Municipal Structures Act (117/1998): Municipal Demarcation Board: Delimitation of municipal wards: Intsika Yethu Local Municipality (EC135)	3449	4
61	Wet Op Plaaslike Regering: Munisipale Strukture (117/1998): Munisipale Afbakeningsraad: Afbakening van munisipale wyke: Intsika Yethu Local Municipality (EC135).....	3449	5

PROVINCIAL NOTICES • PROVINSIALE KENNISGEWINGS

PROVINCIAL NOTICE 61 OF 2015**MUNICIPAL DEMARCATION BOARD : DELIMITATION OF
MUNICIPAL WARDS IN TERMS OF THE LOCAL
GOVERNMENT : MUNICIPAL STRUCTURES ACT, 1998.****Intsika Yethu Local Municipality
EC135**

In terms of Item 5 (1) of Schedule 1 to the Local Government: Municipal Structures Act, 1998 (Act No. 117 of 1998) (the Act) the Municipal Demarcation Board hereby publishes its delimitation of wards for the above-mentioned municipality. Particulars of the delimitation are listed in the Schedule.

In terms of Item 5 (2) of Schedule 1 to the Act, any person aggrieved by the delimitation may, within 14 days of publication of this notice, submit objections in writing to:

The Municipal Demarcation Board
Private Bag X123
Centurion
0046

Fax: 086 5248643
Email: wards@demarcation.org.za

The attached form MDB 5 must please be used to object. The form is also available on www.demarcation.org.za

**MS JANE THUPANA
CHAIRPERSON: MUNICIPAL DEMARCATION BOARD**

SCHEDULE

In terms of section 18(3) of the Local Government: Municipal Structures Act, 1998 (Act 117 of 1998), the MEC responsible for local government has determined that the municipal council consists of 42 councillors.

After having consulted the Independent Electoral Commission, The Municipal Demarcation Board has delimited the municipality into 21 wards in terms of Schedule 1 of the Act.

The number of registered voters in each ward does not vary by more than fifteen percent from the norm. The norm was determined by dividing the total number of voters on the municipal segment of the national common voters roll, namely 76049 voters on 5 March 2014, by the number of wards in the municipality.

An overview map of the boundary of the municipality, with the boundaries of the wards within the municipality, and a map of each ward are attached. In case of a discrepancy between the map and this schedule, the map will prevail. The ward numbers, the voting districts and voting stations in each ward, and the number of voters are as follows:

PROVINSIALE KENNISGEWING 61 VAN 2015**MUNISIPALE AFBAKENINGSRAAD :
AFBAKENING VAN MUNISIPALE WYKE INGEVOLGE DIE WET OP
PLAASLIKE REGERING: MUNISIPALE STRUKTURE, 1998****Intsika Yethu Local Municipality****EC135**

Ingevolge Item 5(1) van Bylae 1 van die Wet op Plaaslike Regering: Munisipale Strukture, 1998 (Wet No. 117 van 1998) (die Wet) publiseer die Munisipale Afbakeningsraad hiermee sy afbakening van wyke vir die bogenaaamde munisipaliteit. Besonderhede van die afbakening is vervat in die Bylae.

Ingevolge item 5(2) van Bylae 1 van die Wet, kan enige persoon wat gegrief is deur 'n afbakening binne 14 dae vanaf publikasie van hierdie kennisgewing skriftelike besware voorlê aan:

Die Munisipale Afbakeningsraad
Privaatsak X123
Centurion
0046

Faks: 086 5248643
E-pos: wards@demarcation.org.za

Die aangehegte vorm MDB5 moet asseblief gebruik word om beswaar aan te teken. Die vorm is ook beskikbaar op www.demarcation.org.za

**MS JANE THUPANA
VOORSITTER : MUNISIPALE AFBAKENINGSRAAD****BYLAE**

Ingevolge artikel 18(3) van die Wet op Plaaslike Regering: Munisipale Strukture, 1998 (Wet 117 van 1998) het die LUR vir plaaslike regering bepaal dat die munisipale raad bestaan uit 42 raadslede.

Na oorlegpleging met die Onafhanklike Verkiesingskommissie het die Munisipale Afbakeningsraad die munisipaliteit in 21 wyke afgebaken ingevolge Bylae 1 van die Wet.

Die getal geregistreerde kiesers in elke wyk, wyk nie meer as vyftien persent van die norm af nie. Die norm is bepaal deur die getal geregistreerde kiesers op die munisipale segment van die nasionale gemeenskaplike kieserslys, naamlik 76049 kiesers op 5 Maart 2014, deur die getal wyke in die munisipaliteit te deel.

'n Oorsigkaart van die munisipale grens met die grense van die wyke binne die munisipale grens, en 'n kaart van elke wyk, is aangeheg. Ingeval van 'n verskil tussen 'n kaart en hierdie bylae, sal die kaart geld.

Die wyknommers, die stemdistrikte en stemlokale in elke wyk, en die getal kiesers is as volg:

Ward 1 comprises of a total of 4111 registered voters.
Wyk 1 bestaan uit 'n totaal van 4111 geregistreerde kiesers.
 MIN VOTERS/KIESER 3078 NORM 3621 MAX VOTERS/KIESER 4164

VOTING DISTRICT No. STEMDISTRIK No.	VOTING STATION NAME STEMLOKAAL NAAM	NUMBER OF VOTERS GETAL KIESERS	SPLIT VD VERDEELDE SD
11080257	THEMBISILE MARTIN HANI JUNIOR SECONDARY SCH	365	
11080268	BANGILIZWE JUNIOR SECONDARY SCHOOL	722	
11080718	GUDWANA JUNIOR SECONDARY SCHOOL	243	
11080864	ZWELIBHANGILE JUNIOR SECONDARY SCHOOL	179	
11080707	MTHIMBINI JUNIOR SECONDARY SCHOOL	170	
11080853	VUKANI PRIMARY SCHOOL	272	
11080842	GQOBHOZA PRIMARY SCHOOL	426	
11080448	BANZI TRADITIONAL HALL	671	
11080482	SENTILE JUNIOR SECONDARY SCHOOL	532	
11080493	ZIGUDU MISSION JUNIOR SECONDARY SCHOOL	246	
11080875	NDLANGISA SENIOR SECONDARY SCHOOL	285	

Ward 2 comprises of a total of 3342 registered voters.
Wyk 2 bestaan uit 'n totaal van 3342 geregistreerde kiesers.
 MIN VOTERS/KIESER 3078 NORM 3621 MAX VOTERS/KIESER 4164

VOTING DISTRICT No. STEMDISTRIK No.	VOTING STATION NAME STEMLOKAAL NAAM	NUMBER OF VOTERS GETAL KIESERS	SPLIT VD VERDEELDE SD
11080662	ANGLICAN CHURCH	595	
11080831	MPOMVANA PRIMARY SCHOOL	427	
11080965	ST MARKS RURAL HOUSING HALL	212	
11080202	ST MARKS TRADITIONAL HALL	489	
11080673	MBUDLU JUNIOR SECONDARY SCHOOL	682	
11080213	NTSHINGENI JUNIOR SECONDARY SCHOOL	937	

Ward 3 comprises of a total of 4098 registered voters.
Wyk 3 bestaan uit 'n totaal van 4098 geregistreerde kiesers.
 MIN VOTERS/KIESER 3078 NORM 3621 MAX VOTERS/KIESER 4164

VOTING DISTRICT No. STEMDISTRIK No.	VOTING STATION NAME STEMLOKAAL NAAM	NUMBER OF VOTERS GETAL KIESERS	SPLIT VD VERDEELDE SD
10940813	NGONGOLO JUNIOR PRIMARY SCHOOL	161	
10940251	SONKOSI JUNIOR SECONDARY SCHOOL	286	
10940273	MPIKWANA SENIOR PRIMARY SCHOOL	253	

10940284	DUMEZWENI JUNIOR SECONDARY SCHOOL	465
10940262	MIDDLE XOLOBE JUNIOR SECONDARY SCHOOL	786
10940408	CABA COMMUNITY HALL	216
10940396	QWILI-QWILI JUNIOR SECONDARY SCHOOL	551
10940240	NKQBELA JUNIOR SECONDARY SCHOOL	517
10940576	TEMPORARY VOTING STATION (MOYENI VILLAGE)	170
10940419	BENGU JUNIOR SECONDARY SCHOOL	241
10940565	NOMZAMO SENIOR PRIMARY SCHOOL	266
10940824	KHANYISA SENIOR PRIMARY SCHOOL	186

Ward 4 comprises of a total of 4094 registered voters.

Wyk 4 bestaan uit 'n totaal van 4094 geregistreerde kiesers.

MIN VOTERS/KIESER 3078

NORM 3621

MAX VOTERS/KIESER 4164

VOTING DISTRICT No. STEMDISTRIK No.	VOTING STATION NAME STEMLOKAAL NAAM	NUMBER OF VOTERS GETAL KIESERS	SPLIT VD VERDEELDE SD
11080178	GANDO JUNIOR SECONDARY SCHOOL	735	
11070492	BILATYE JUNIOR SECONDARY SCHOOL	581	
11071729	MBINZANA JUNIOR SECONDARY SCHOOL	332	
11070470	MTHYINTYINI JUNIOR SECONDARY SCHOOL	370	
11080729	SHA SHA SENIOR PRIMARY SCHOOL	280	
11071044	SENGENI SENIOR PRIMARY SHCOOL	373	
11071055	ST PATRICK/THOBILE DYANTYI	412	
11080471	NTLONZE JUNIOR SECONDARY SCHOOL	335	
11080459	MHLOBO JUNIOR SECONDARY SCHOOL	548	
11071033	NYONGWANE SENIOR PRIMARY SCHOOL	128	

Ward 5 comprises of a total of 3523 registered voters.

Wyk 5 bestaan uit 'n totaal van 3523 geregistreerde kiesers.

MIN VOTERS/KIESER 3078

NORM 3621

MAX VOTERS/KIESER 4164

VOTING DISTRICT No. STEMDISTRIK No.	VOTING STATION NAME STEMLOKAAL NAAM	NUMBER OF VOTERS GETAL KIESERS	SPLIT VD VERDEELDE SD
11080336	SIDUBI POORT	437	
11080820	JONGULWANDLE JUNIOR PRIMARY SCHOOL	413	
11080325	MVUZU JUNIOR SECONDARY SCHOOL	480	
11080415	ZAMXOLO JUNIOR SECONDARY SCHOOL	807	
11080730	QAMATA GREAT PLACE	193	
11080347	DALIWONGA SENIOR SECONDARY SCHOOL	503	

11080189	NQWILISO JUNIOR SECONDARY SCHOOL	690
----------	----------------------------------	-----

Ward 6	comprises of a total of 3967	registered voters.
Wyk 6	bestaan uit 'n totaal van 3967	geregistreerde kiesers.
MIN VOTERS/KIESER 3078	NORM 3621	MAX VOTERS/KIESER 4164

VOTING DISTRICT No. STEMDISTRIK No.	VOTING STATION NAME STEMLOKAAL NAAM	NUMBER OF VOTERS GETAL KIESERS	SPLIT VD VERDEELDE SD
10940857	JONGINTSIZI SENIOR PRIMARY SCHOOL	234	
10940868	KHONCOSHE PRE-SCHOOL	218	
10940699	LEMTA SENIOR PRIMARY SCHOOL	131	
10940688	RHABE CHURCH	74	
10940677	LOWER MBULUKWENZA JUNIOR SECONDARY SCHO	139	
10940587	PRESBYTERIAN CHURCH OF AFRICA	224	
10940385	NDEMA SENIOR SECONDARY SCHOOL	412	
10940420	MTSHANYANA JUNIOR SECONDARY SCHOOL	313	
10940374	MBULUKWEZA SENIOR PRIMARY SCHOOL	226	
10940352	MGWENYANA COMMUNITY HALL	310	
10940307	MBULU JUNIOR SECONDARY SCHOOL	167	
10940295	MAXHAMA JUNIOR SECONDARY SCHOOL	243	
10940082	GCIBALA JUNIOR SECONDARY SCHOOL	223	
10940048	XOLOBE COMMUNITY HALL	465	
10940138	INTILINI JUNIOR SECONDARY SCHOOL	425	
10940363	SIGUBUDWINI JUNIOR SECONDARY SCHOOL	163	

Ward 7	comprises of a total of 3947	registered voters.
Wyk 7	bestaan uit 'n totaal van 3947	geregistreerde kiesers.
MIN VOTERS/KIESER 3078	NORM 3621	MAX VOTERS/KIESER 4164

VOTING DISTRICT No. STEMDISTRIK No.	VOTING STATION NAME STEMLOKAAL NAAM	NUMBER OF VOTERS GETAL KIESERS	SPLIT VD VERDEELDE SD
10940790	LOWER NQOLOSA	272	
10940644	KUYASA JUNIOR SECONDARY SCHOOL	209	
10940183	UPPER QUTSA JUNIOR SECONDARY SCHOOL	563	
11080505	KHANYISA JUNIOR SECONDARY SCHOOL	543	
10940475	TOM SOPETE JUNIOR SECONDARY SCHOOL	206	
11080426	ZWELIBANZI JUNIOR SECONDARY SCHOOL	318	
10940453	LOWER QUTSA JUNIOR SECONDARY SCHOOL	363	
10940655	MPOTULO JUNIOR SECONDARY SCHOOL	281	

10940789	UPPER NQOLOSJA JUNIOR SECONDARY SCHOOL	237
11080246	CHESHIRE HOME	576
10940239	ZWELAKHE JUNIOR SECONDARY SCHOOL	379

Ward 8 comprises of a total of 3830 registered voters.
Wyk 8 bestaan uit 'n totaal van 3830 geregistreerde kiesers.
 MIN VOTERS/KIESER 3078 NORM 3621 MAX VOTERS/KIESER 4164

VOTING DISTRICT No. STEMDISTRIK No.	VOTING STATION NAME STEMLOKAAL NAAM	NUMBER OF VOTERS GETAL KIESERS	SPLIT VD VERDEELDE SD
10740013	EAST BANK JUNIOR SECONDARY SCHOOL	322	
10940521	TSOMO TOWN HALL	990	
10910843	DAZA JUNIOR SECONDARY SCHOOL	360	
10940093	TSOMO HIGH SCHOOL	404	
10910405	NONKQUBELA JUNIOR SECONDARY SCHOOL	332	
10940464	TSUME JUNIOR SECONDARY SCHOOL	332	
10910214	EZOLO SCHOOL	303	
10910179	MADUMA JUNIOR SECONDARY SCHOOL	338	
10940116	WILSON MAYEKISO SENIOR PRIMARY SCHOOL	449	

Ward 9 comprises of a total of 3240 registered voters.
Wyk 9 bestaan uit 'n totaal van 3240 geregistreerde kiesers.
 MIN VOTERS/KIESER 3078 NORM 3621 MAX VOTERS/KIESER 4164

VOTING DISTRICT No. STEMDISTRIK No.	VOTING STATION NAME STEMLOKAAL NAAM	NUMBER OF VOTERS GETAL KIESERS	SPLIT VD VERDEELDE SD
10940026	GAQELO SENIOR PRIMARY SCHOOL.	474	
10940554	UPPER GQOGQORHA JUNIOR SECONDARY SCHOOL	452	
10940633	UPPER XUME SECONDARY SCHOOL	617	
10940071	MIDDLE GQOGQORA JUNIOR SECONDARY SCHOOL	313	
10940756	LUFUKUFUKU JUNIOR SECONDARY SCHOOL	380	
10910696	MABHENTSENI JUNIOR SECONDARY SCHOOL	610	
10740024	GOBINAMBA SENIOR SECONDARY SCHOOL	394	

Ward 10 comprises of a total of 3284 registered voters.
Wyk 10 bestaan uit 'n totaal van 3284 geregistreerde kiesers.
 MIN VOTERS/KIESER 3078 NORM 3621 MAX VOTERS/KIESER 4164

VOTING DISTRICT No. STEMDISTRIK No.	VOTING STATION NAME STEMLOKAAL NAAM	NUMBER OF VOTERS GETAL KIESERS	SPLIT VD VERDEELDE SD
10940846	LOWER TSOJANA JUNIOR SECONDARY SCHOOL	238	

10940150	MTSHABE JUNIOR SECONDARY SCHOOL	513
10940149	NCWANA JUNIOR SECONDARY SCHOOL	246
10940802	JONGI MISSION	218
10940341	GCINGCA JUNIOR SECONDARY SCHOOL	413
10940060	MVELASE JUNIOR SECONDARY SCHOOL	478
10940059	MANGELENGELE JUNIOR SECONDARY SCHOOL	210
10940037	MANGUBOMVU JUNIOR SECONDARY SCHOOL	287
10940734	LOWER GQOGQORA JUNIOR SECONDARY SCHOOL	150
10940510	BONASE JUNIOR SECONDARY SCHOOL	531

Ward 11 comprises of a total of 3254 registered voters.
Wyk 11 bestaan uit 'n totaal van 3254 geregisteerde kiesers.

MIN VOTERS/KIESER 3078

NORM 3621

MAX VOTERS/KIESER 4164

VOTING DISTRICT No. STEMDISTRIK No.	VOTING STATION NAME STEMLOKAAL NAAM	NUMBER OF VOTERS GETAL KIESERS	SPLIT VD VERDEELDE SD
10940778	PHILMON JUNIOR SECONDARY SCHOOL	362	
11080369	MDIBANISO JUNIOR SECONDARY SCHOOL	371	
11080022	JONGINAMBA JUNIOR SECONDARY SCHOOL	299	
10940767	GQOGQORA JUNIOR SECONDARY SCHOOL	240	
11080404	NDLUNKULU JUNIOR SECONDARY SCHOOL	602	
10940543	NGUBEZULU JUNIOR SECONDARY SCHOOL	390	
11080011	DALISIZWE JUNIOR SECONDARY SCHOOL	445	
11080381	HLATIKHULU JUNIOR SECONDARY SCHOOL	545	

Ward 12 comprises of a total of 3262 registered voters.
Wyk 12 bestaan uit 'n totaal van 3262 geregisteerde kiesers.

MIN VOTERS/KIESER 3078

NORM 3621

MAX VOTERS/KIESER 4164

VOTING DISTRICT No. STEMDISTRIK No.	VOTING STATION NAME STEMLOKAAL NAAM	NUMBER OF VOTERS GETAL KIESERS	SPLIT VD VERDEELDE SD
11080055	GXOJENI/KAULELE JUNIOR SECONDARY SCHOOL	591	
11080628	NGOJINI JUNIOR SECONDARY SCHOOL	246	
11080033	SABATA SENIOR SECONDARY SCHOOL	950	
11080044	ZWELIXOLILE JUNIOR SECONDARY SCHOOL	407	
11080392	MAIN JUNIOR SECONDARY SCHOOL	606	
11080370	KWABABA JUNIOR SECONDARY SCHOOL	462	

Ward 13 comprises of a total of 4120 registered voters.
Wyk 13 bestaan uit 'n totaal van 4120 geregistreerde kiesers.
 MIN VOTERS/KIESER 3078 NORM 3621 MAX VOTERS/KIESER 4164

VOTING DISTRICT No. STEMDISTRIK No.	VOTING STATION NAME STEMLOKAAL NAAM	NUMBER OF VOTERS GETAL KIESERS	SPLIT VD VERDEELDE SD
10940228	PHAPHAMA JUNIOR SECONDARY SCHOOL	265	
10940329	SINETHEMBA COMMUNITY HALL	594	
10940330	GXWALUBONMVU JUNIOR SECONDARY SCHOOL	376	
10940701	LUMANI JUNIOR SECONDARY SCHOOL	225	
10940712	HANGE JUNIOR SECONDARY SCHOOL	317	
10940723	PHUMLA JUNIOR SECONDARY SCHOOL	269	
10940217	KWEBULANA JUNIOR SECONDARY SCHOOL	409	
10940206	BONGOLETHU JUNIOR SECONDARY SCHOOL	373	
10940194	MAWUSHENI JUNIOR SECONDARY SCHOOL	444	
10940105	MKWINTI JUNIOR SECONDARY SCHOOL	369	
10940127	NGUDLE JUNIOR SECONDARY SCHOOL	479	

Ward 14 comprises of a total of 3996 registered voters.
Wyk 14 bestaan uit 'n totaal van 3996 geregistreerde kiesers.
 MIN VOTERS/KIESER 3078 NORM 3621 MAX VOTERS/KIESER 4164

VOTING DISTRICT No. STEMDISTRIK No.	VOTING STATION NAME STEMLOKAAL NAAM	NUMBER OF VOTERS GETAL KIESERS	SPLIT VD VERDEELDE SD
10970029	COFIMVABA TOWN HALL	2271	
10970018	GOOD HOPE COMMUNITY SCHOOL	1098	
11080235	MAHLUBINI JUNIOR SECONDARY SCHOOL	627	

Ward 15 comprises of a total of 3124 registered voters.
Wyk 15 bestaan uit 'n totaal van 3124 geregistreerde kiesers.
 MIN VOTERS/KIESER 3078 NORM 3621 MAX VOTERS/KIESER 4164

VOTING DISTRICT No. STEMDISTRIK No.	VOTING STATION NAME STEMLOKAAL NAAM	NUMBER OF VOTERS GETAL KIESERS	SPLIT VD VERDEELDE SD
11080897	DULI JUNIOR SECONDARY SCHOOL	587	
11080358	ISIKHOBHA JUNIOR SECONDARY SCHOOL	875	
11080886	MAGWALA STADIUM	191	
11080224	MCUMGCO JUNIOR SECONDARY SCHOOL	540	
11080741	GILINKUMBI	122	
11080516	MATSHONA JUNIOR SECONDARY SCHOOL	222	

Ward 19 comprises of a total of 3625 registered voters.
Wyk 19 bestaan uit 'n totaal van 3625 geregistreerde kiesers.
 MIN VOTERS/KIESER 3078 NORM 3621 MAX VOTERS/KIESER 4164

VOTING DISTRICT No. STEMDISTRIK No.	VOTING STATION NAME STEMLOKAAL NAAM	NUMBER OF VOTERS GETAL KIESERS	SPLIT VD VERDEELDE SD
11080099	MTINGWEVU CLINIC	449	
11460080	ZINGQUTU JUNIOR SECONDARY SCHOOL	340	
11080561	MPUNGA JUNIOR SECONDARY SCHOOL	185	
11080437	HEWUKILE JSS	413	
11080583	MAHLUNGULU JUNIOR SECONDARY SCHOOL	134	
11080280	MZIMVUBU JUNIOR SECONDARY SCHOOL	508	
11080112	MNQANQENI JUNIOR SECONDARY SCHOOL	745	
11080796	MTINGWEVU JUNIOR SECONDARY SCHOOL	161	
11080549	NQUQU JUNIOR SECONDARY SCHOOL	690	

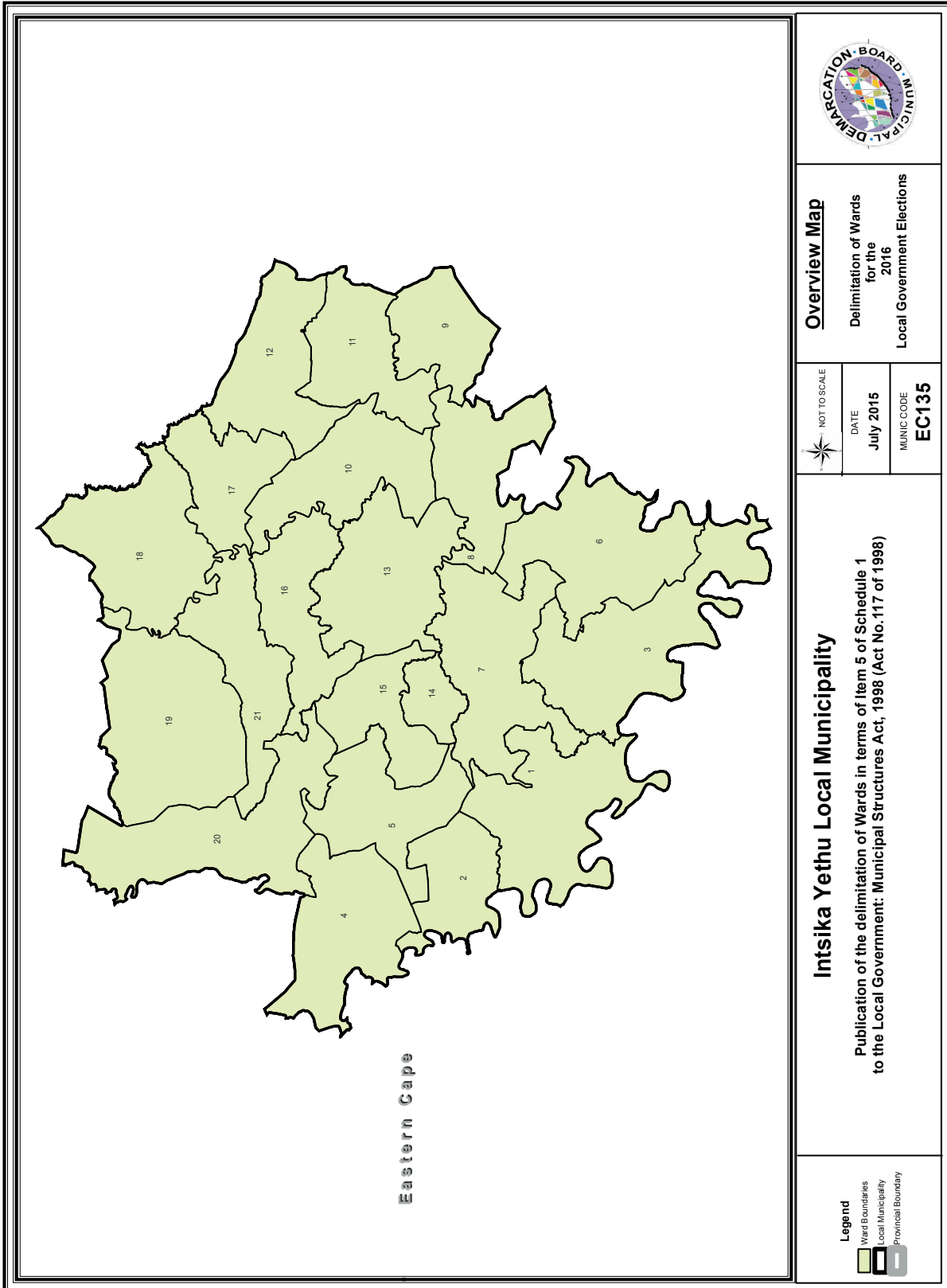
Ward 20 comprises of a total of 4005 registered voters.
Wyk 20 bestaan uit 'n totaal van 4005 geregistreerde kiesers.
 MIN VOTERS/KIESER 3078 NORM 3621 MAX VOTERS/KIESER 4164

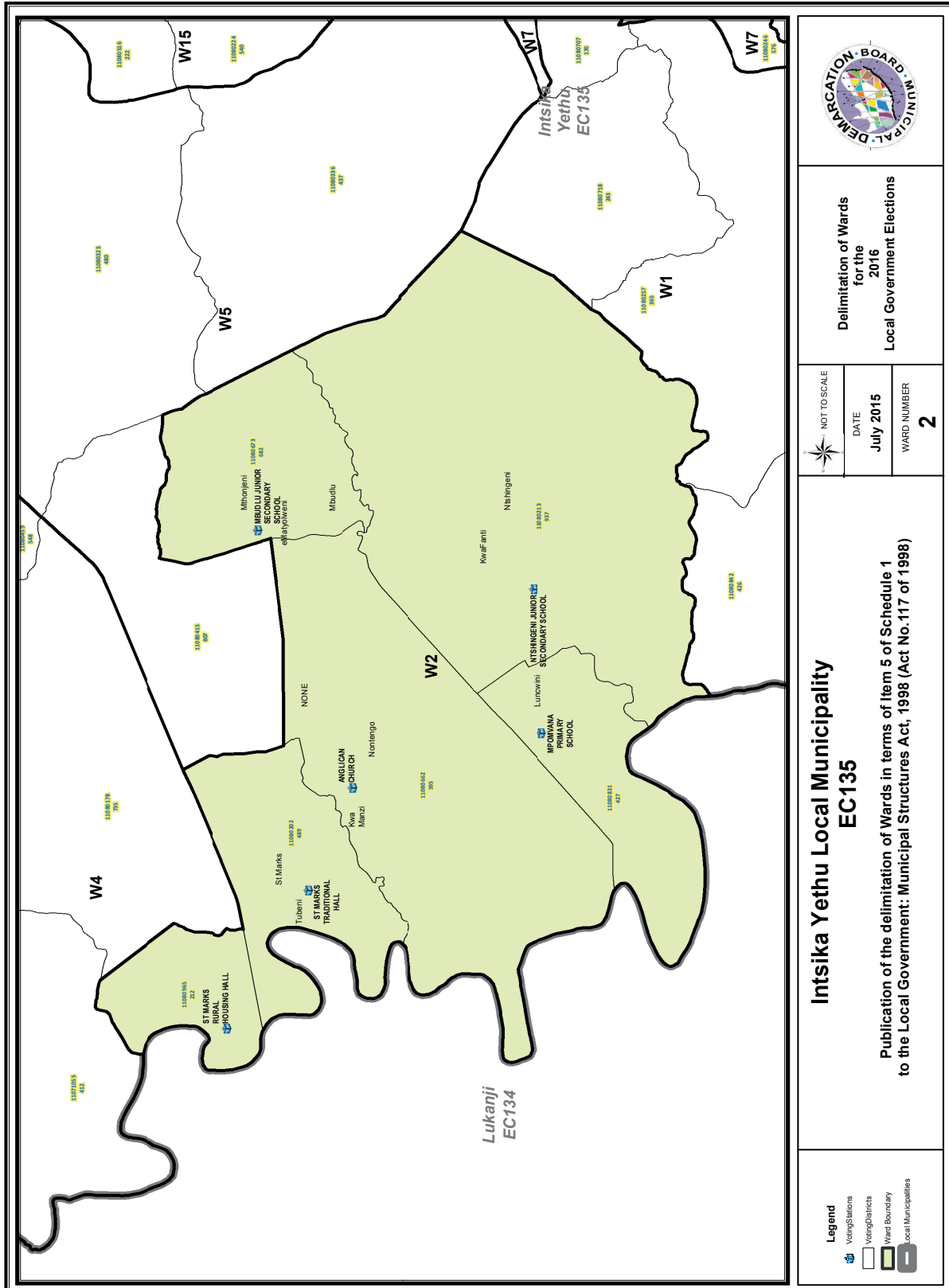
VOTING DISTRICT No. STEMDISTRIK No.	VOTING STATION NAME STEMLOKAAL NAAM	NUMBER OF VOTERS GETAL KIESERS	SPLIT VD VERDEELDE SD
11460541	LUZUKO JUNIOR SECONDARY SCHOOL	243	
11460013	LOWER SEPLAN JUNIOR SECONDARY SCHOOL	422	
11080819	KWA GCINA SENIOR PRIMARY SCHOOL	195	
11080909	UPPER NCUNCUZO JUNIOR SECONDARY SCHOOL	415	
11080808	GUSI JUNIOR SECONDARY SCHOOL	290	
11080460	RWANTSANA JUNIOR SECONDARY SCHOOL	407	
11080123	SOUTHEYVILLE JUNIOR SECONDARY SCHOOL	423	
11080134	BANZINDLOVU JUNIOR SECONDARY SCHOOL	710	
11080156	TSAKANA JUNIOR SECONDARY SCHOOL	256	
11080167	DALUBUHLE JUNIOR SECONDARY SCHOOL	644	

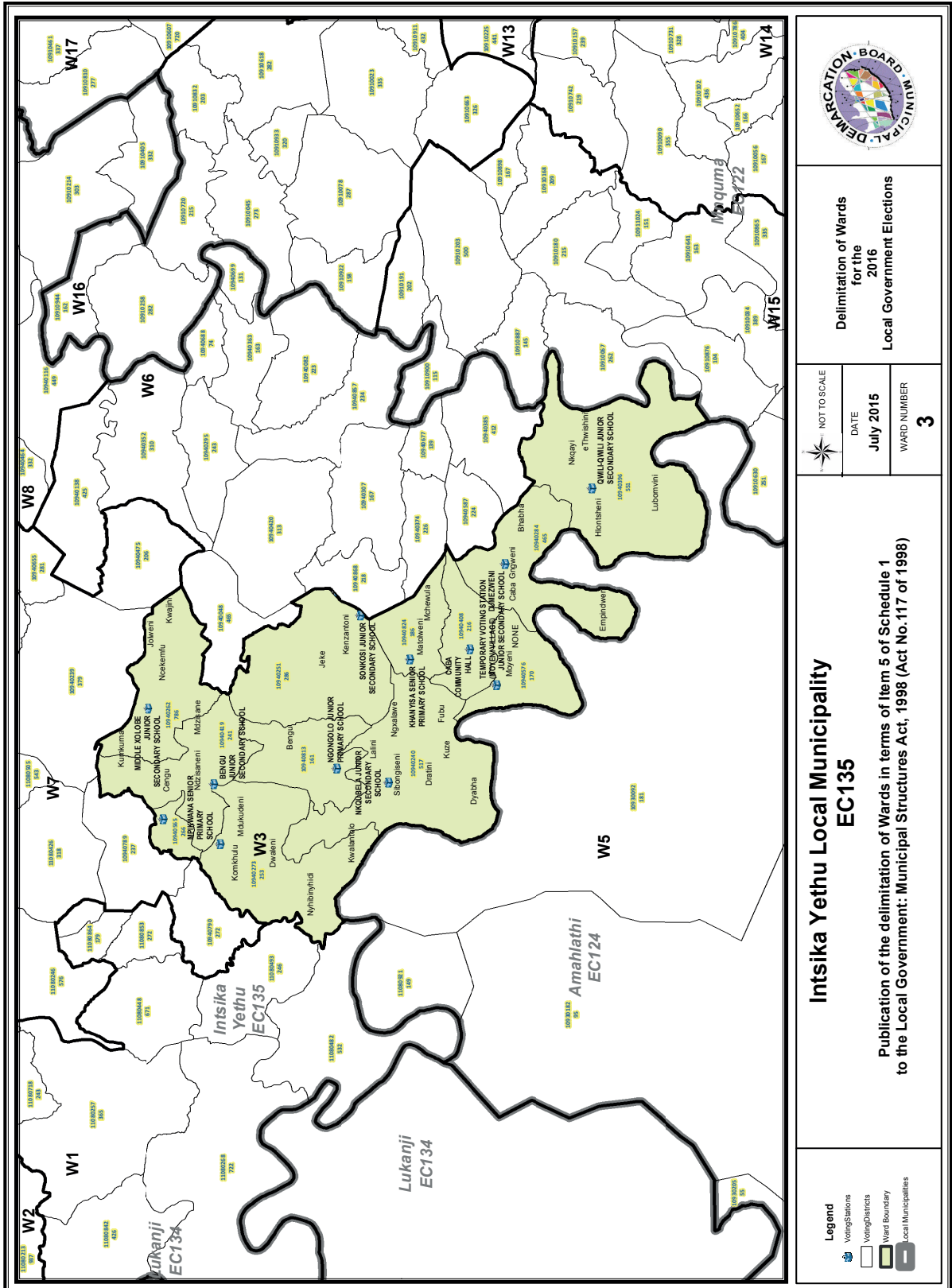
Ward 21 comprises of a total of 3333 registered voters.
Wyk 21 bestaan uit 'n totaal van 3333 geregistreerde kiesers.
 MIN VOTERS/KIESER 3078 NORM 3621 MAX VOTERS/KIESER 4164

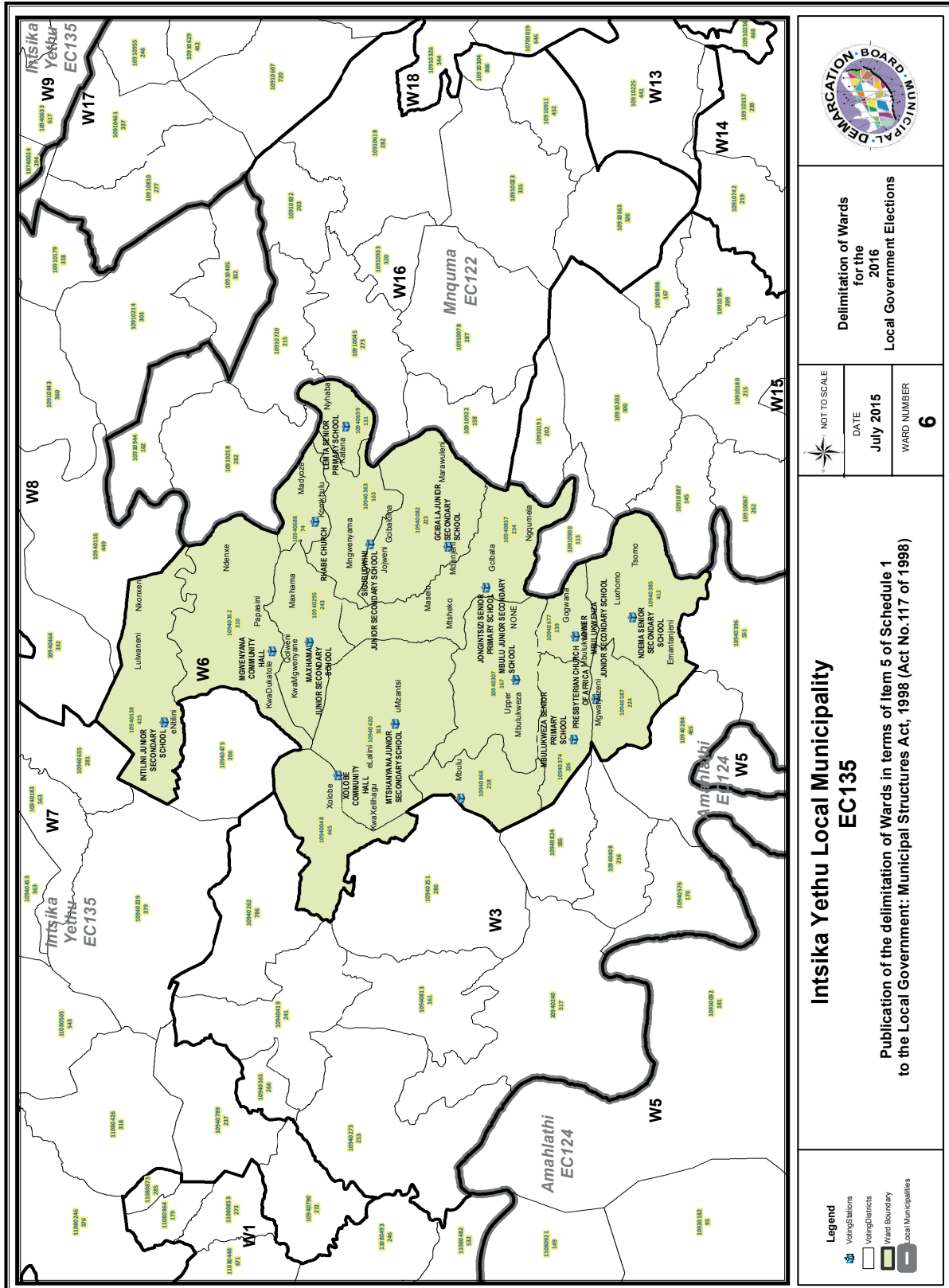
VOTING DISTRICT No. STEMDISTRIK No.	VOTING STATION NAME STEMLOKAAL NAAM	NUMBER OF VOTERS GETAL KIESERS	SPLIT VD VERDEELDE SD
11080550	NOWETHU JUNIOR SECONDARY SCHOOL	511	

11080314	NGCACA JUNIOR SECONDARY SCHOOL	434
11080101	NXELESA COMMUNITY HALL	477
11080932	KHULILE JUNIOR SECONDARY SCHOOL	292
11080279	NGXWABANGU JUNIOR SECONDARY SCHOOL	701
11080527	HOYANA JUNIOR SECONDARY SCHOOL	405
11080538	MKULULI JUNIOR SECONDARY SCHOOL	513









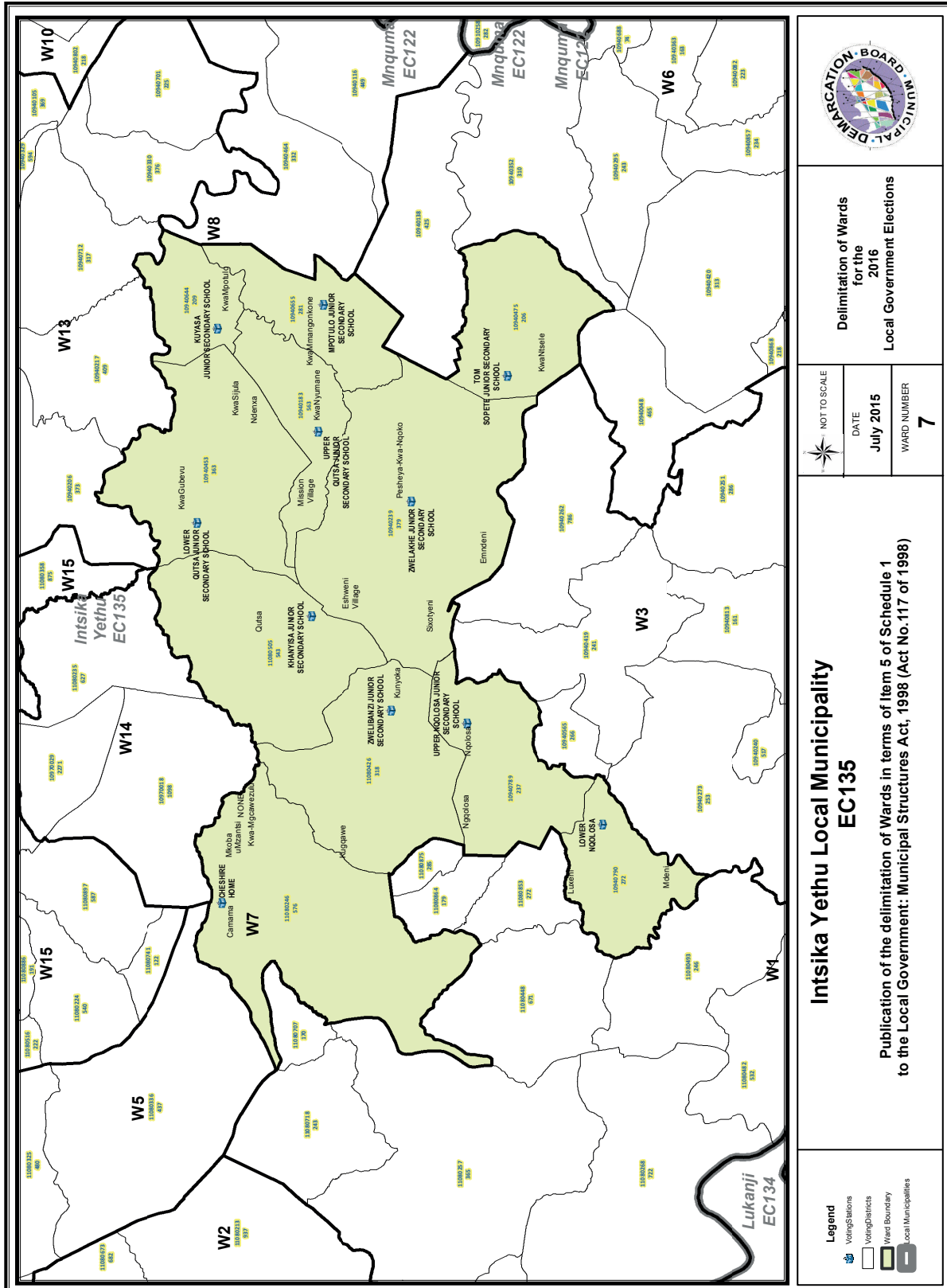
Delimitation of Wards
for the
2016
Local Government Elections

NOT TO SCALE
DATE July 2015
WARD NUMBER 6

**Intsika Yethu Local Municipality
EC135**

Publication of the delimitation of Wards in terms of Item 5 of Schedule 1
to the Local Government: Municipal Structures Act, 1998 (Act No.117 of 1998)

- Legend**
- Voting Stations
 - Voting Districts
 - Ward Boundary
 - Local Municipalities



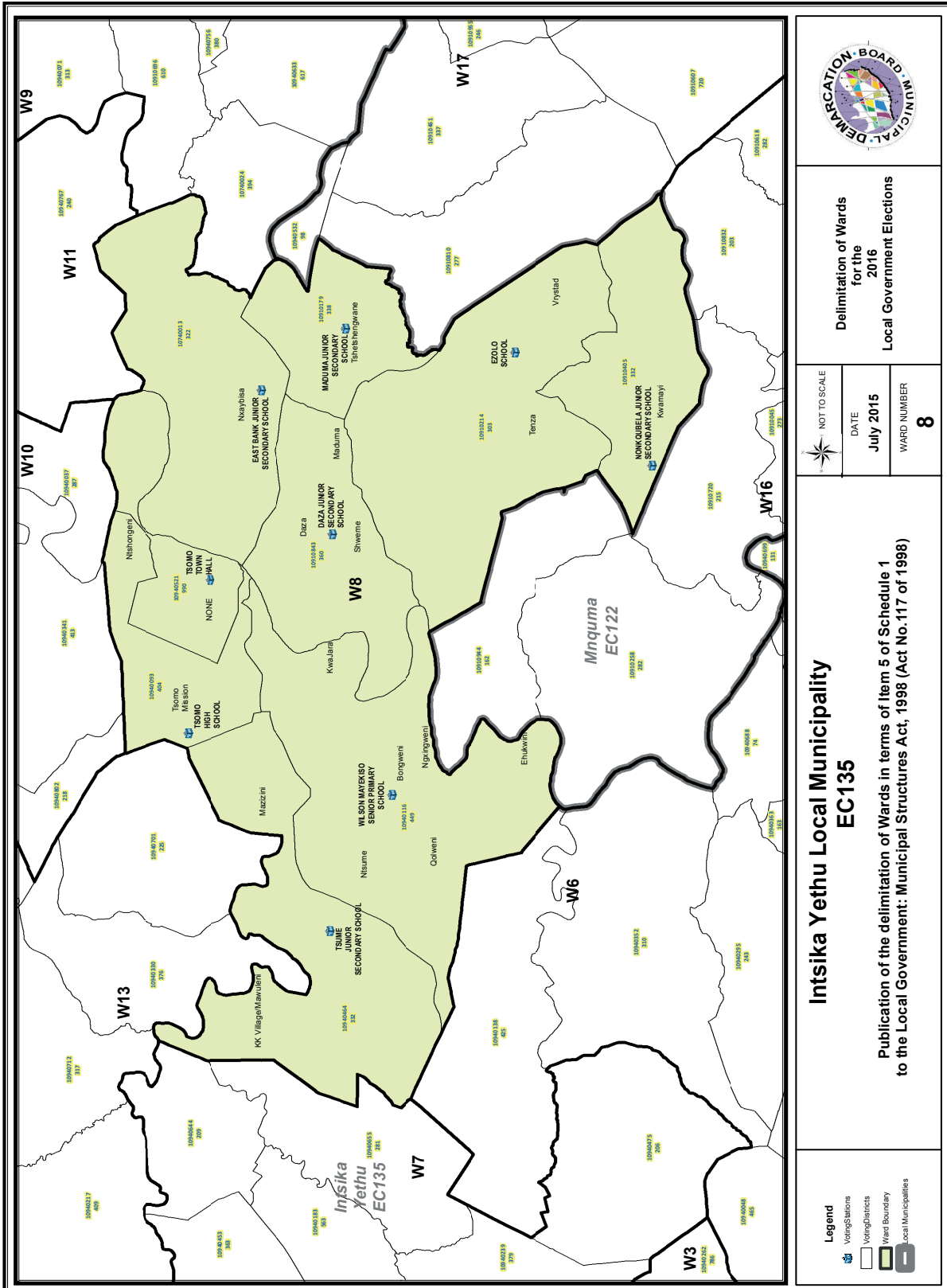
Delimitation of Wards
for the
2016
Local Government Elections

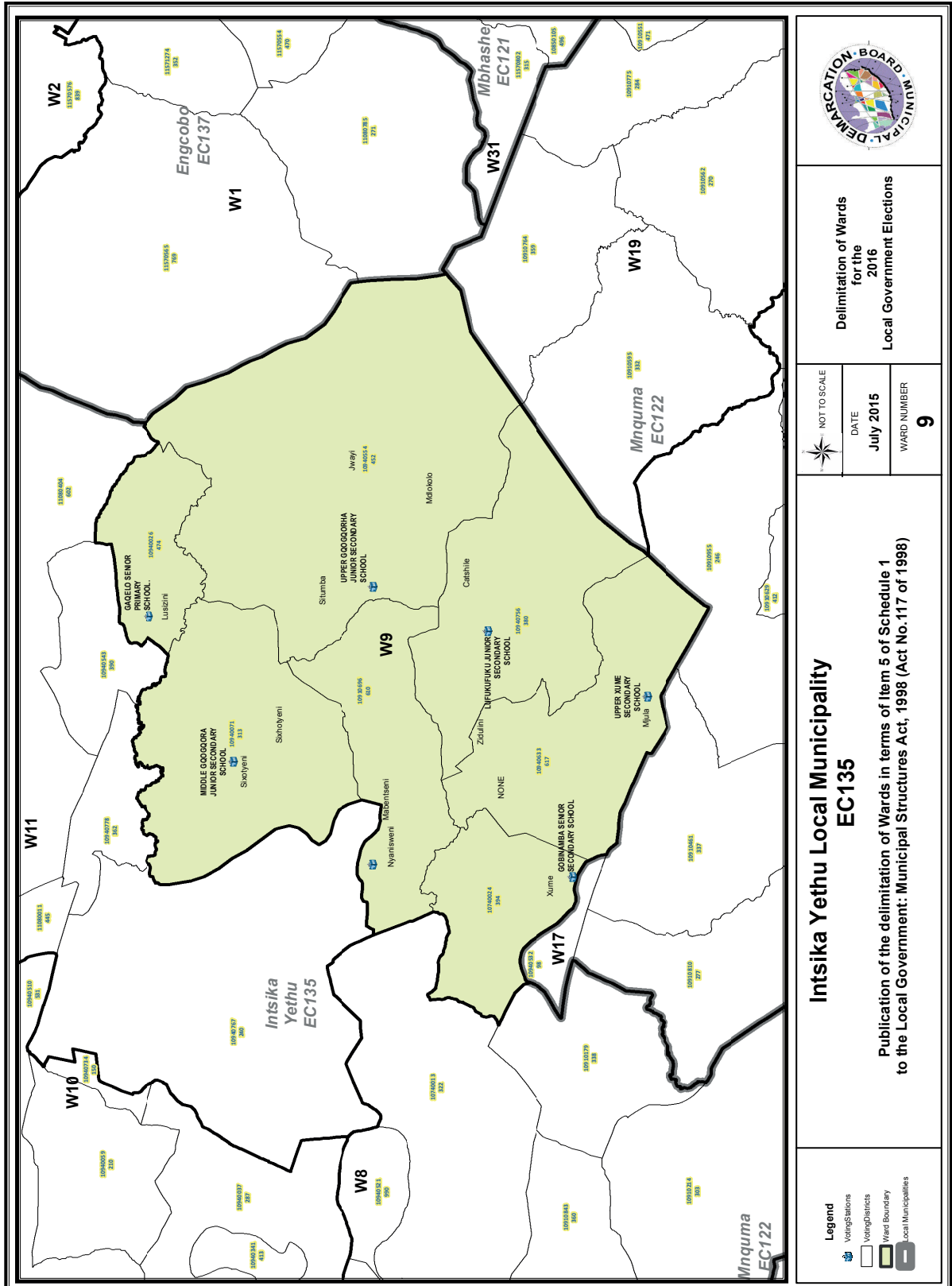
NOT TO SCALE
DATE
July 2015
WARD NUMBER
7

**Intsika Yethu Local Municipality
EC135**

Publication of the delimitation of Wards in terms of Item 5 of Schedule 1
to the Local Government: Municipal Structures Act, 1998 (Act No.117 of 1998)

- Legend**
- Voting Stations
 - Voting Districts
 - Ward Boundary
 - Local Municipalities





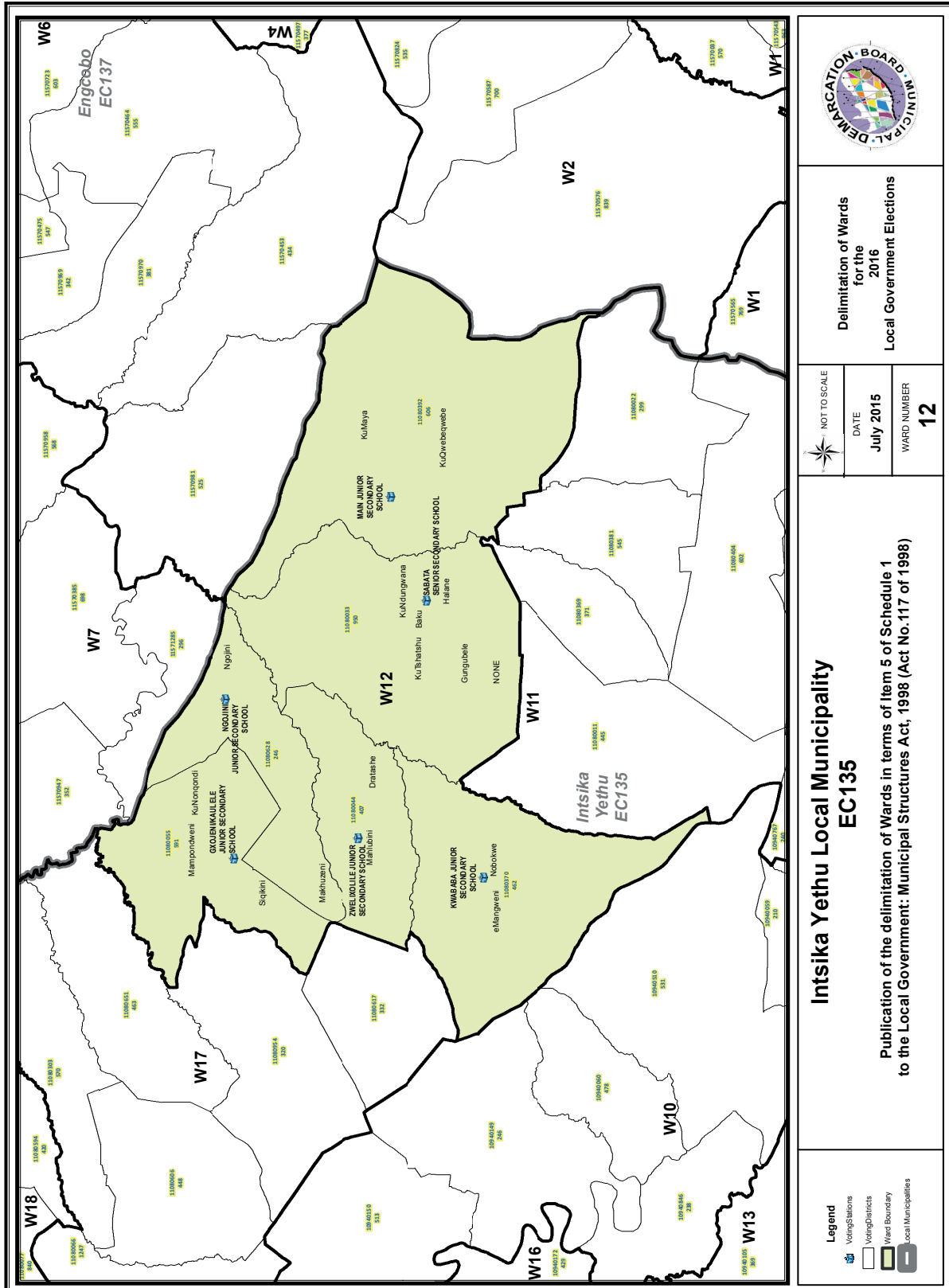
Delimitation of Wards
for the
2016
Local Government Elections

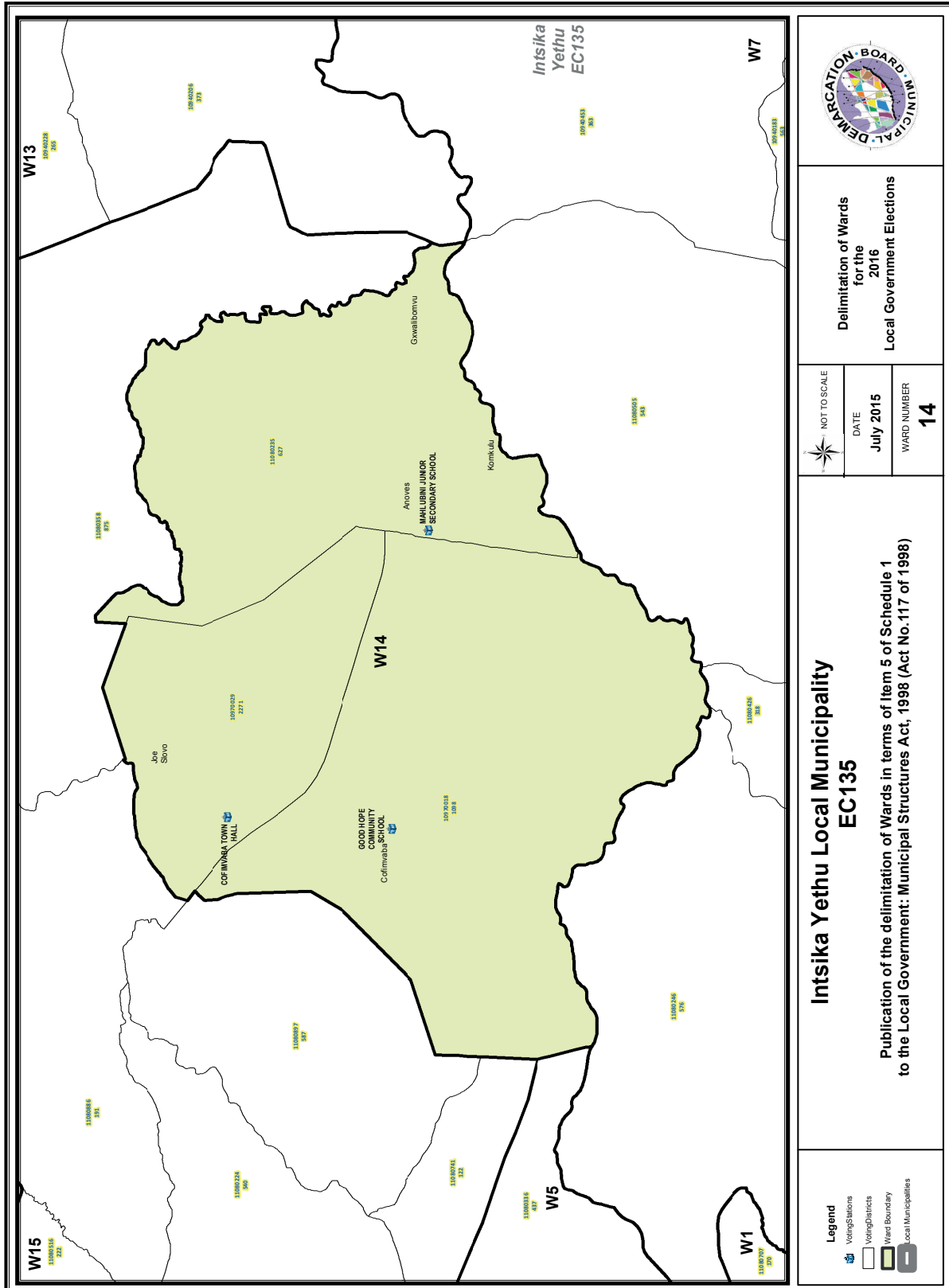
NOT TO SCALE
DATE July 2015
WARD NUMBER 9

**Intsika Yethu Local Municipality
EC135**

Publication of the delimitation of Wards in terms of Item 5 of Schedule 1
to the Local Government: Municipal Structures Act, 1998 (Act No.117 of 1998)

- Legend**
- Voting Stations
 - Voting Districts
 - Ward Boundary
 - Local Municipalities



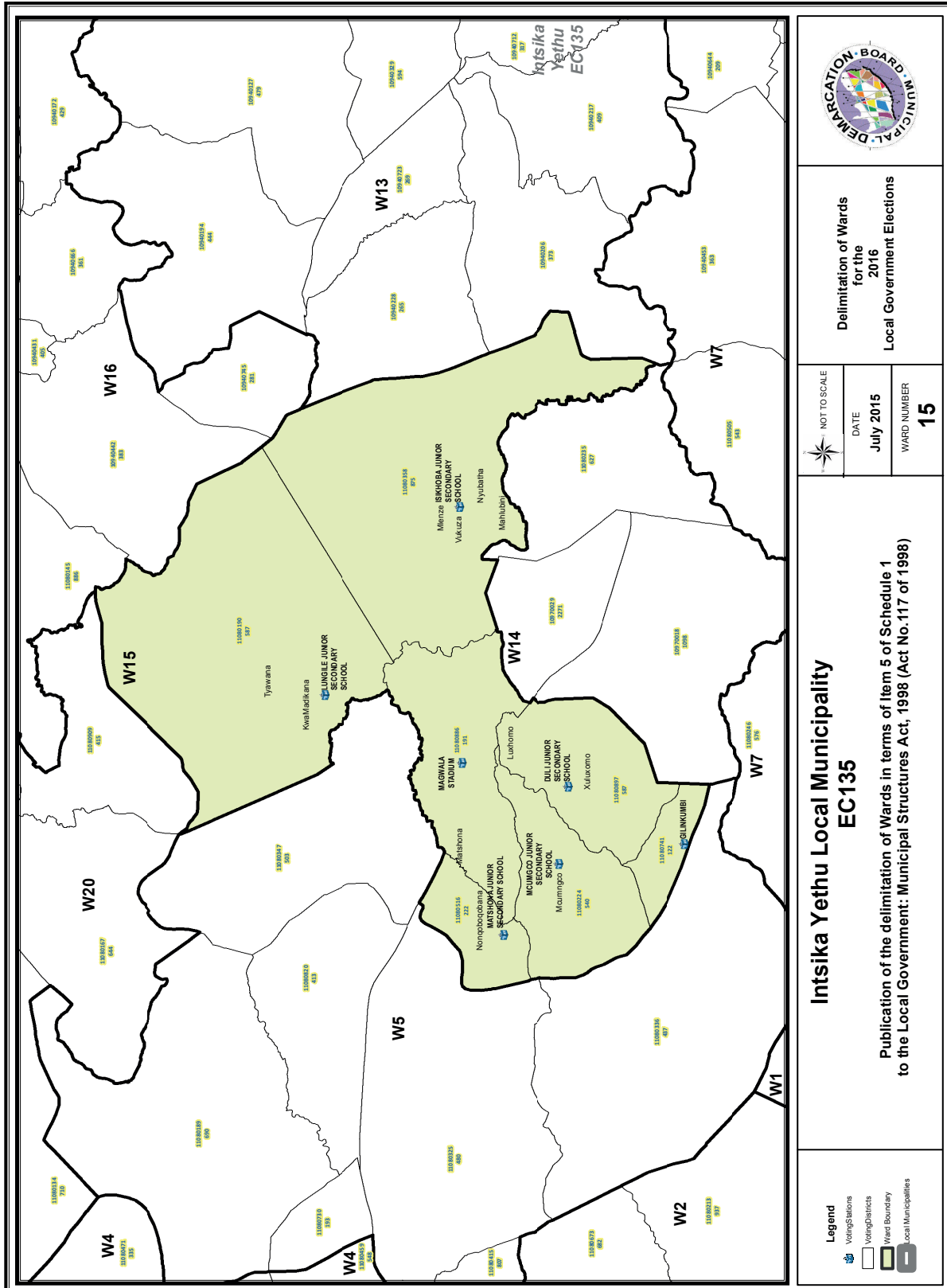


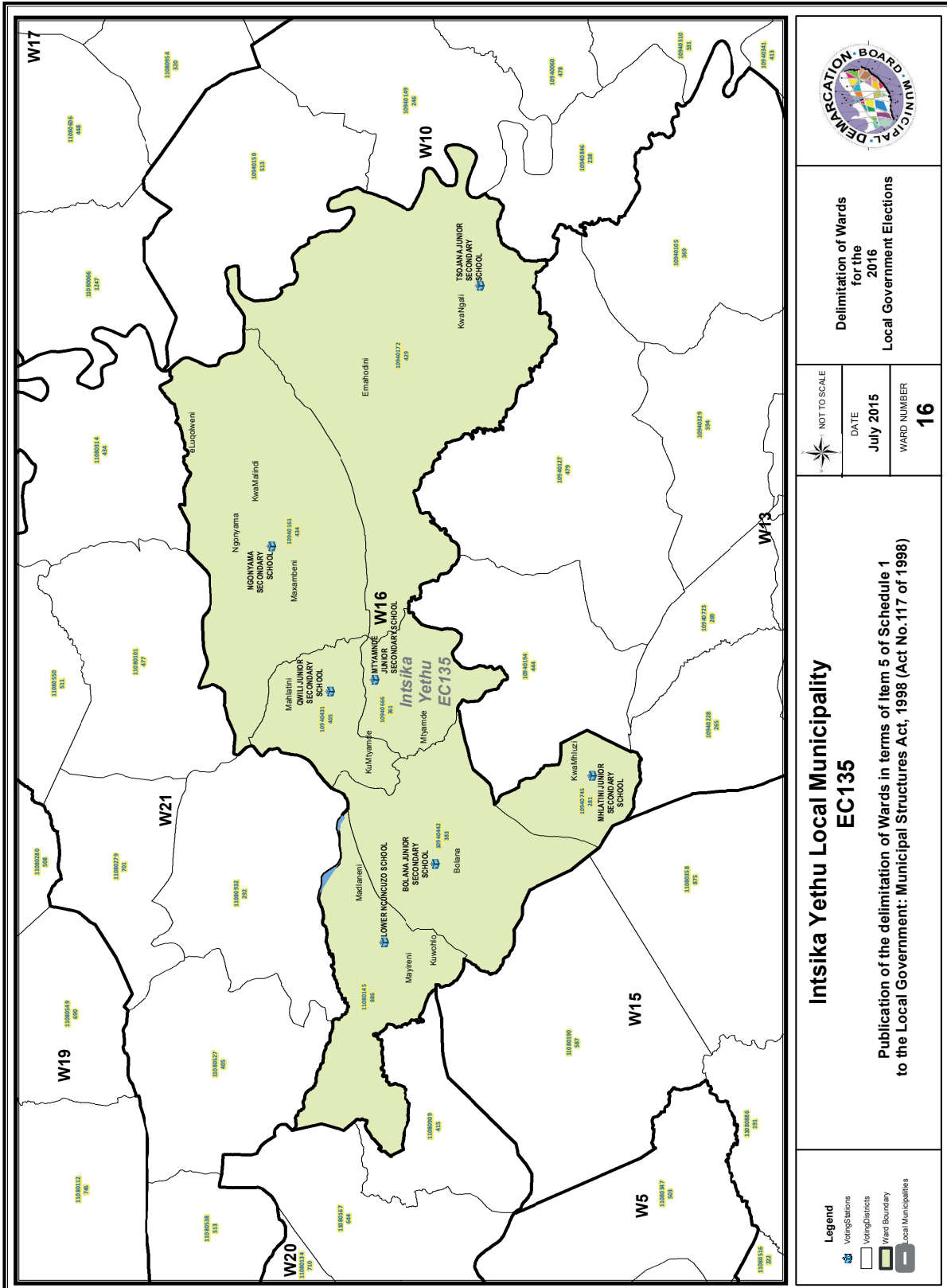
Delimitation of Wards
for the
2016
Local Government Elections

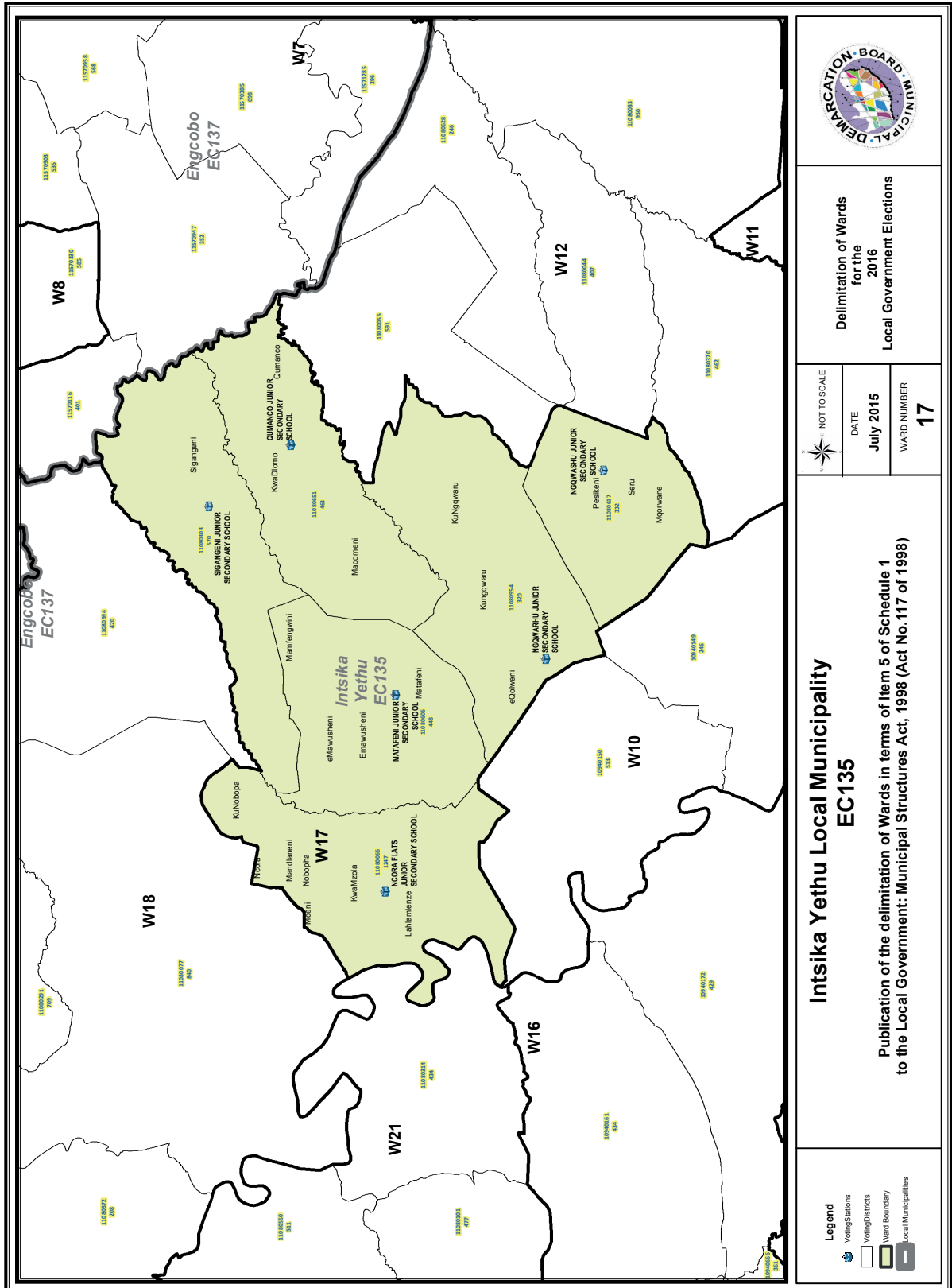
NOT TO SCALE
DATE
July 2015
WARD NUMBER
14

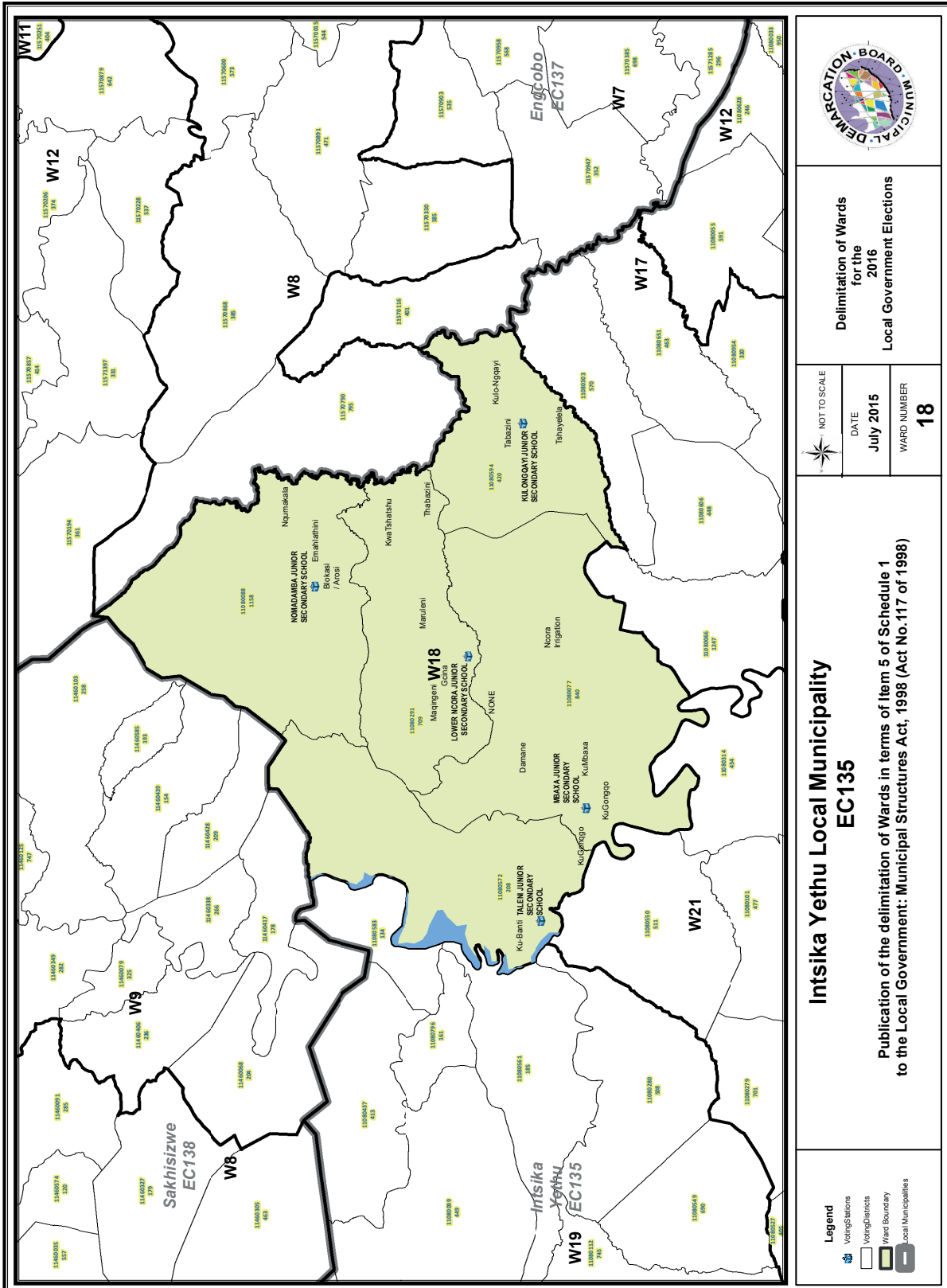
**Intsika Yethu Local Municipality
EC135**
Publication of the delimitation of Wards in terms of Item 5 of Schedule 1
to the Local Government: Municipal Structures Act, 1998 (Act No. 117 of 1998)

- Legend**
- Voting Stations
 - Voting Districts
 - Ward Boundary
 - Local Municipalities









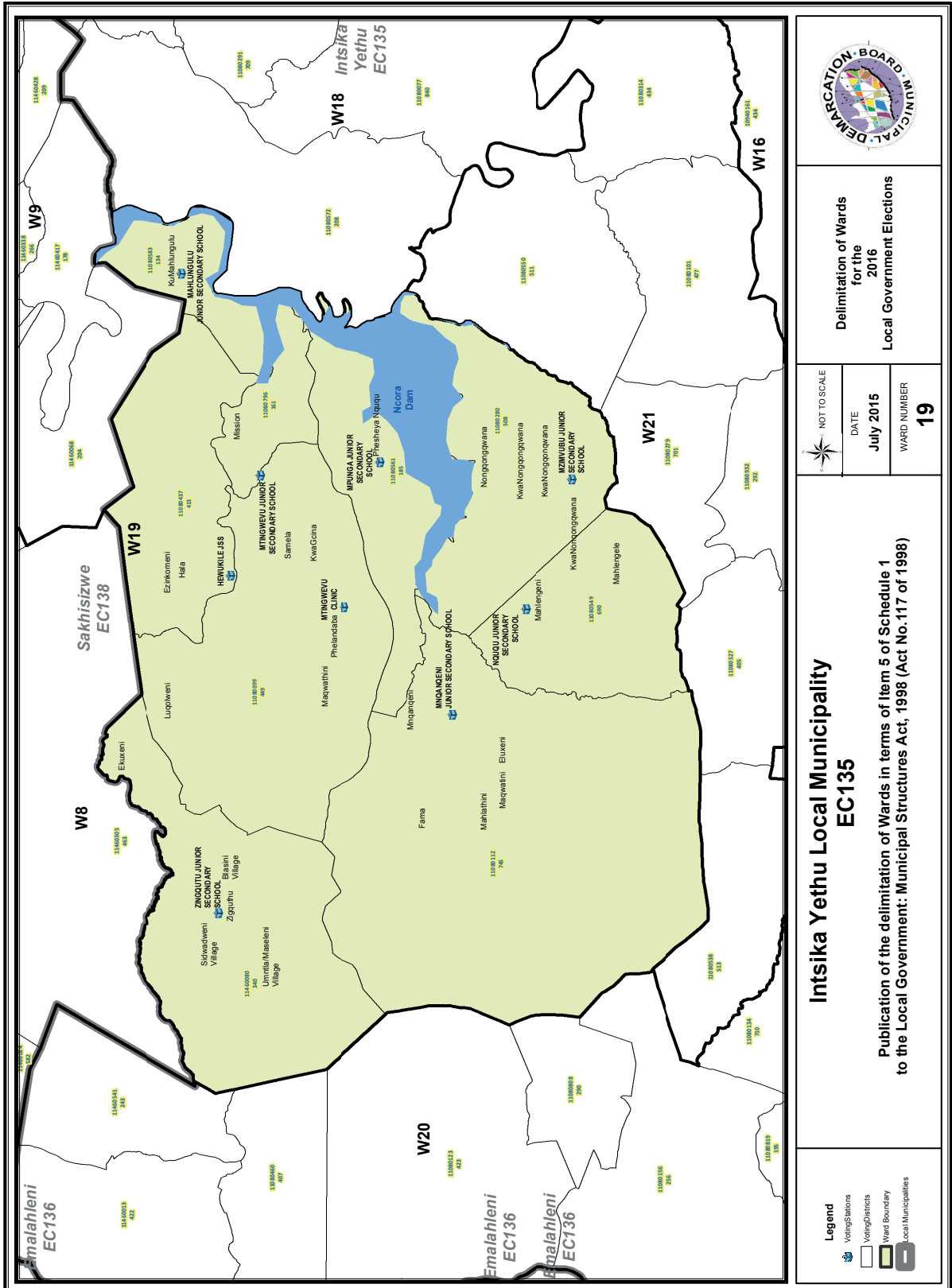
Delimitation of Wards
for the
2016
Local Government Elections

NOT TO SCALE
DATE
July 2015
WARD NUMBER
18

**Intsika Yethu Local Municipality
EC135**

Publication of the delimitation of Wards in terms of Item 5 of Schedule 1
to the Local Government: Municipal Structures Act, 1998 (Act No.117 of 1998)

- Legend**
- Voting Stations
 - Voting Districts
 - Ward Boundary
 - Local Municipalities



Legend

- Voting Stations
- Voting Districts
- Ward Boundary
- Local Municipalities

Intsika Yethu Local Municipality
EC135

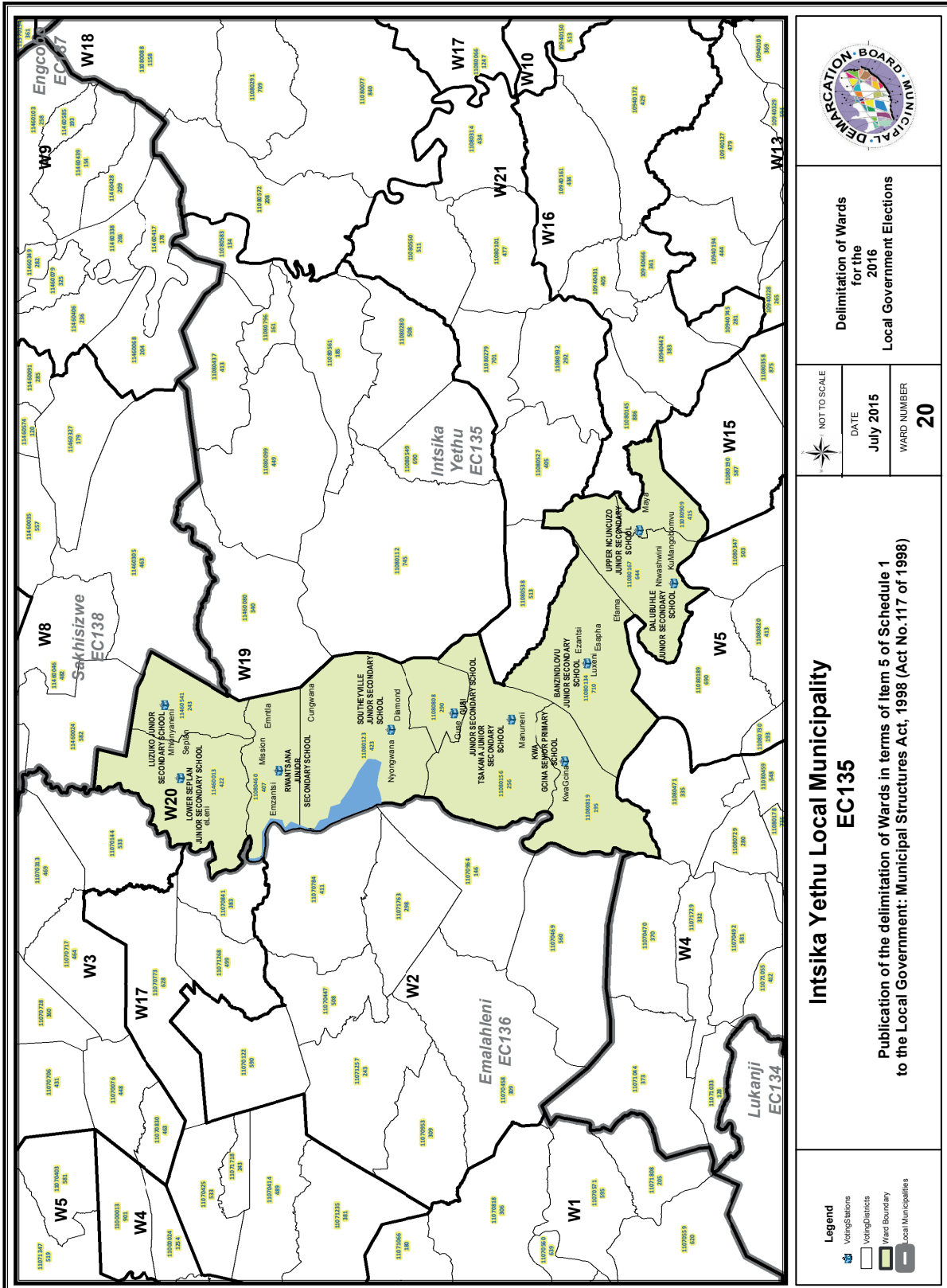
Publication of the delimitation of Wards in terms of Item 5 of Schedule 1 to the Local Government: Municipal Structures Act, 1998 (Act No.117 of 1998)

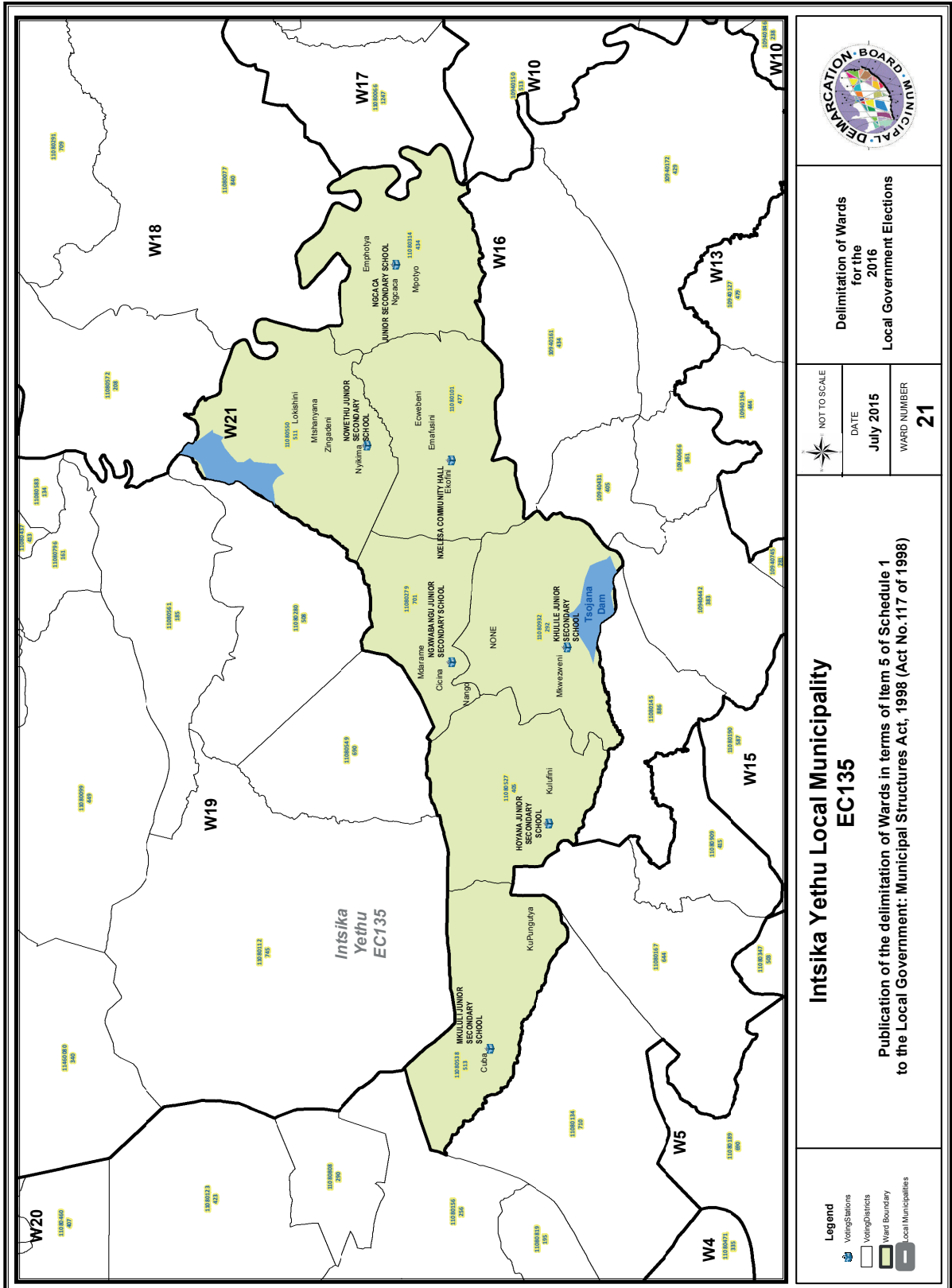
Delimitation of Wards for the 2016 Local Government Elections

NOT TO SCALE

DATE: **July 2015**

WARD NUMBER: **19**





FORM/VORM MDB5

WARD DELIMITATION/

WYKSAFBAKENING

**OBJECTION IN TERMS OF ITEM 5(2) OF SCHEDULE 1 TO THE LOCAL GOVERNMENT:
MUNICIPAL STRUCTURES ACT, 1998**

**BESWAAR INGEVOLGE ITEM 5(2) VAN BYLAE 1 VAN DIE WET OP PLAASLIKE REGERING:
MUNISIPALE STRUKTURE, 1998**

Name of municipality/ Naam van Munisipaliteit :.....

Code/Kode :.....

**Name of aggrieved person/institution/Naam van beswaarde persoon/instelling :
.....**

**Contact person in case of an institution/ Kontak persoon in geval van 'n instelling:
.....**

Address/Adres:.....

Tel. number/ Tel. nommer:.....Cell number/ Selfoonnommer:

Email address:.....

PLEASE USE ADDITIONAL PAGE SHOULD THE ALTERNATIVE PROPOSALS BE MORE THAN THE FOLLOWING SPACE AVAILABLE.

I request the Municipal Demarcation Board to consider the following alternative proposals/ Ek versoek die Munisipale Afbakeningsraad om die volgende alternatiewe voorstelle te oorweeg:

Ward number/ Wyk nommer	The ward should comprise of the following voting districts (Provide voting district number and the number of voters in brackets e.g. VD1123456(1500)+VD345678(2500)=4000)/ Die wyk moet bestaan uit die volgende stemdistrikte: (Voorsien die stemdistriknommer en die getal geregistreerde kiesers as volg VD1123456(1500)+VD345678(2500)=4000)	Motivation /Motivering

I confirm that/ Ek bevestig dat:

- each cluster of voting districts form a contiguous ward/ die saamgevoegde stemdistrikte vorm 'n aaneenlopende wyk;
- the number of voters in each ward fall within the minimum and maximum of voters allowed per ward/ die getal kiesers in elke wyk is binne die minimum en maksimum getal wat per wyk toegelaat word;
- the proposed ward boundaries comply, in general, with the criteria/ die voorgestelde wyke voldoen in die algemeen aan die kriteria.

SIGNATURE

NAME AND SURNAME

DATE

IMPORTANT

Information

from Government Printing Works

Dear Valued Customers,

Government Printing Works has implemented rules for completing and submitting the electronic Adobe Forms when you, the customer, submits your notice request.

Please take note of these guidelines when completing your form.

GPW Business Rules

1. No hand written notices will be accepted for processing, this includes Adobe forms which have been completed by hand.
2. Notices can only be submitted in Adobe electronic form format to the email submission address submit.egazette@gpw.gov.za. This means that any notice submissions not on an Adobe electronic form that are submitted to this mailbox will be **rejected**. National or Provincial gazette notices, where the Z95 or Z95Prov must be an Adobe form but the notice content (body) will be an attachment.
3. Notices brought into GPW by "walk-in" customers on electronic media can only be submitted in Adobe electronic form format. This means that any notice submissions not on an Adobe electronic form that are submitted by the customer on electronic media will be **rejected**. National or Provincial gazette notices, where the Z95 or Z95Prov must be an Adobe form but the notice content (body) will be an attachment.
4. All customers who walk in to GPW that wish to submit a notice that is not on an electronic Adobe form will be routed to the Contact Centre where the customer will be taken through the completion of the form by a GPW representative. Where a customer walks into GPW with a stack of hard copy notices delivered by a messenger on behalf of a newspaper the messenger must be referred back to the sender as the submission does not adhere to the submission rules.
5. All notice submissions that do not comply with point 2 will be charged full price for the notice submission.
6. The current cut-off of all Gazette's remains unchanged for all channels. (Refer to the GPW website for submission deadlines – www.gpwonline.co.za)
7. Incorrectly completed forms and notices submitted in the wrong format will be rejected to the customer to be corrected and resubmitted. Assistance will be available through the Contact Centre should help be required when completing the forms. (012-748 6200 or email info.egazette@gpw.gov.za)
8. All re-submissions by customers will be subject to the above cut-off times.
9. All submissions and re-submissions that miss the cut-off will be rejected to the customer to be submitted with a new publication date.
10. Information on forms will be taken as the primary source of the notice to be published. Any instructions that are on the email body or covering letter that contradicts the notice form content will be ignored.

You are therefore advised that effective from **Monday, 18 May 2015** should you not comply with our new rules of engagement, all notice requests will be rejected by our new system.

Furthermore, the fax number **012- 748 6030** will also be **discontinued** from this date and customers will only be able to submit notice requests through the email address submit.egazette@gpw.gov.za.



eGazette



Printed by and obtainable from the Government Printer, Bosman Street, Private Bag X85, Pretoria, 0001.
 Contact Centre Tel: 012-748 6200. eMail: info.egazette@gpw.gov.za
 Also available at the Legal Advisory Services, **Province of the Eastern Cape**, Private Bag X0047, Bisho, 5605.
 Tel. (040) 635-0052.