



PROVINCE OF THE EASTERN CAPE
IPHONDO LEMPUMA KOLONI
PROVINSIE OOS-KAAP

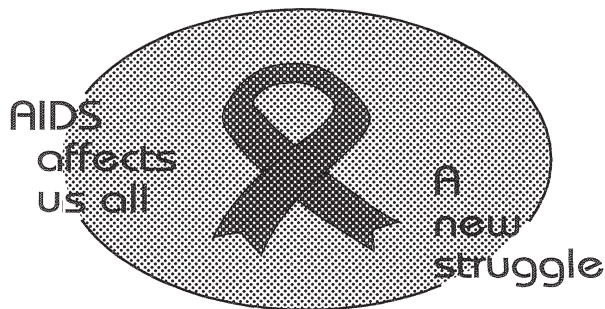
**Provincial Gazette
Igazethi Yephondo
Provinsiale Koerant
(Extraordinary)**

Vol. 22

BISHO/
KING WILLIAM'S TOWN, 22 JULY 2015

No. 3451

We all have the power to prevent AIDS



**AIDS
HELPLINE**

0800 012 322

DEPARTMENT OF HEALTH

Prevention is the cure

N.B. The Government Printing Works will not be held responsible for the quality of "Hard Copies" or "Electronic Files" submitted for publication purposes

ISSN 1682-4556



9 771682 455006

03451



IMPORTANT

Information

from Government Printing Works

Dear Valued Customers,

Government Printing Works has implemented rules for completing and submitting the electronic Adobe Forms when you, the customer, submits your notice request.

Please take note of these guidelines when completing your form.



GPW Business Rules

1. No hand written notices will be accepted for processing, this includes Adobe forms which have been completed by hand.
2. Notices can only be submitted in Adobe electronic form format to the email submission address submit.egazette@gpw.gov.za. This means that any notice submissions not on an Adobe electronic form that are submitted to this mailbox will be **rejected**. National or Provincial gazette notices, where the Z95 or Z95Prov must be an Adobe form but the notice content (body) will be an attachment.
3. Notices brought into GPW by "walk-in" customers on electronic media can only be submitted in Adobe electronic form format. This means that any notice submissions not on an Adobe electronic form that are submitted by the customer on electronic media will be **rejected**. National or Provincial gazette notices, where the Z95 or Z95Prov must be an Adobe form but the notice content (body) will be an attachment.
4. All customers who walk in to GPW that wish to submit a notice that is not on an electronic Adobe form will be routed to the Contact Centre where the customer will be taken through the completion of the form by a GPW representative. Where a customer walks into GPW with a stack of hard copy notices delivered by a messenger on behalf of a newspaper the messenger must be referred back to the sender as the submission does not adhere to the submission rules.
5. All notice submissions that do not comply with point 2 will be charged full price for the notice submission.
6. The current cut-off of all Gazette's remains unchanged for all channels. (Refer to the GPW website for submission deadlines – www.gpwonline.co.za)
7. Incorrectly completed forms and notices submitted in the wrong format will be rejected to the customer to be corrected and resubmitted. Assistance will be available through the Contact Centre should help be required when completing the forms. (012-748 6200 or email info.egazette@gpw.gov.za)
8. All re-submissions by customers will be subject to the above cut-off times.
9. All submissions and re-submissions that miss the cut-off will be rejected to the customer to be submitted with a new publication date.
10. Information on forms will be taken as the primary source of the notice to be published. Any instructions that are on the email body or covering letter that contradicts the notice form content will be ignored.

You are therefore advised that effective from **Monday, 18 May 2015** should you not comply with our new rules of engagement, all notice requests will be rejected by our new system.

Furthermore, the fax number **012- 748 6030** will also be **discontinued** from this date and customers will only be able to submit notice requests through the email address submit.egazette@gpw.gov.za.

DISCLAIMER:

Government Printing Works reserves the right to apply the 25% discount to all Legal and Liquor notices that comply with the business rules for notice submissions for publication in gazettes.

National, Provincial, Road Carrier Permits and Tender notices will pay the price as published in the Government Gazettes.

For any information, please contact the eGazette Contact Centre on 012-748 6200 or email info.egazette@gpw.gov.za

Table of Contents

<i>No.</i>		<i>Gazette No.</i>	<i>Page No.</i>
PROVINCIAL NOTICES • PROVINSIALE KENNISGEWINGS			
40	Local Government: Municipal Structures Act (117/1998): Municipal Demarcation Board: Delimitation of municipal wards: Mbizana Local Municipality (EC).....	3451	4
40	Wet Op Plaaslike Regering: Munisipale Strukture (117/1998): Munisipale Afbakeningsraad: Afbakening van munisipale wyke: Mbizana Local Municipality (EC).....	3451	5

PROVINCIAL NOTICES • PROVINSIALE KENNISGEWINGS

PROVINCIAL NOTICE 40 OF 2015**MUNICIPAL DEMARCATION BOARD : DELIMITATION OF
MUNICIPAL WARDS IN TERMS OF THE LOCAL
GOVERNMENT : MUNICIPAL STRUCTURES ACT, 1998.****Mbizana Local Municipality
EC443**

In terms of Item 5 (1) of Schedule 1 to the Local Government: Municipal Structures Act, 1998 (Act No. 117 of 1998) (the Act) the Municipal Demarcation Board hereby publishes its delimitation of wards for the above-mentioned municipality. Particulars of the delimitation are listed in the Schedule.

In terms of Item 5 (2) of Schedule 1 to the Act, any person aggrieved by the delimitation may, within 14 days of publication of this notice, submit objections in writing to:

The Municipal Demarcation Board
Private Bag X123
Centurion
0046

Fax: 086 5248643
Email: wards@demarcation.org.za

The attached form MDB 5 must please be used to object. The form is also available on www.demarcation.org.za

**MS JANE THUPANA
CHAIRPERSON: MUNICIPAL DEMARCATION BOARD****SCHEDULE**

In terms of section 18(3) of the Local Government: Municipal Structures Act, 1998 (Act 117 of 1998), the MEC responsible for local government has determined that the municipal council consists of 62 councillors.

After having consulted the Independent Electoral Commission, The Municipal Demarcation Board has delimited the municipality into 31 wards in terms of Schedule 1 of the Act.

The number of registered voters in each ward does not vary by more than fifteen percent from the norm. The norm was determined by dividing the total number of voters on the municipal segment of the national common voters roll, namely 124161 voters on 5 March 2014, by the number of wards in the municipality.

An overview map of the boundary of the municipality, with the boundaries of the wards within the municipality, and a map of each ward are attached. In case of a discrepancy between the map and this schedule, the map will prevail. The ward numbers, the voting districts and voting stations in each ward, and the number of voters are as follows:

PROVINSIALE KENNISGEWING 40 VAN 2015**MUNISIPALE AFBAKENINGSRAAD :
AFBAKENING VAN MUNISIPALE WYKE INGEVOLGE DIE WET OP
PLAASLIKE REGERING: MUNISIPALE STRUKTURE, 1998****Mbizana Local Municipality****EC443**

Ingevolge Item 5(1) van Bylae 1 van die Wet op Plaaslike Regering: Munisipale Strukture, 1998 (Wet No. 117 van 1998) (die Wet) publiseer die Munisipale Afbakeningsraad hiermee sy afbakening van wyke vir die bogenaamde munisipaliteit. Besonderhede van die afbakening is vervat in die Bylae.

Ingevolge item 5(2) van Bylae 1 van die Wet, kan enige persoon wat gegrief is deur 'n afbakening binne 14 dae vanaf publikasie van hierdie kennisgewing skriftelike besware voorlê aan:

Die Munisipale Afbakeningsraad
Privaatsak X123
Centurion
0046

Faks: 086 5248643
E-pos: wards@demarcation.org.za

Die aangehegte vorm MDB5 moet asseblief gebruik word om beswaar aan te teken. Die vorm is ook beskikbaar op www.demarcation.org.za

**MS JANE THUPANA
VOORSITTER : MUNISIPALE AFBAKENINGSRAAD****BYLAE**

Ingevolge artikel 18(3) van die Wet op Plaaslike Regering: Munisipale Strukture, 1998 (Wet 117 van 1998) het die LUR vir plaaslike regering bepaal dat die munisipale raad bestaan uit 62 raadslede.

Na oorlegpleging met die Onafhanklike Verkiesingskommissie het die Munisipale Afbakeningsraad die munisipaliteit in 31 wyke afgebaken ingevolge Bylae 1 van die Wet.

Die getal geregistreerde kiesers in elke wyk, wyk nie meer as vyftien persent van die norm af nie. Die norm is bepaal deur die getal geregistreerde kiesers op die munisipale segment van die nasionale gemeenskaplike kieserslys, naamlik 124161 kiesers op 5 Maart 2014, deur die getal wyke in die munisipaliteit te deel.

'n Oorsigkaart van die munisipale grens met die grense van die wyke binne die munisipale grens, en 'n kaart van elke wyk, is aangeheg. Ingeval van 'n verskil tussen 'n kaart en hierdie bylae, sal die kaart geld.

Die wyknommers, die stembedstrikte en stemlokale in elke wyk, en die getal kiesers is as volg:

Ward 1 comprises of a total of 4193 registered voters.
Wyk 1 bestaan uit 'n totaal van 4193 geregistreerde kiesers.
 MIN VOTERS/KIESER 3404 NORM 4005 MAX VOTERS/KIESER 4606

VOTING DISTRICT No. STEMDISTRIK No.	VOTING STATION NAME STEMLOKAAL NAAM	NUMBER OF VOTERS GETAL KIESERS	SPLIT VD VERDEELDE SD
11670049	BIZANA ROMAN CATHOLIC CHURCH	768	
11670038	BIZANA VILLAGE PRE-SCHOOL	324	
11670016	MAGISTRATE OFFICE	1598	
11670027	ST PATRICKS SENIOR PRIMARY SCHOOL	1234	
11751937	BIZANA BAPTIST CHURCH	269	

Ward 2 comprises of a total of 3645 registered voters.
Wyk 2 bestaan uit 'n totaal van 3645 geregistreerde kiesers.
 MIN VOTERS/KIESER 3404 NORM 4005 MAX VOTERS/KIESER 4606

VOTING DISTRICT No. STEMDISTRIK No.	VOTING STATION NAME STEMLOKAAL NAAM	NUMBER OF VOTERS GETAL KIESERS	SPLIT VD VERDEELDE SD
11750059	NTAMONDE JUNIOR SECONDARY SCHOOL	617	
11790266	MPENI JUNIOR SECONDARY SCHOOL	615	
11790255	GOXE JUNIOR SECONDARY SCHOOL	334	
11790660	MAFADOBO SCHOOL	179	
11790277	NGELE JUNIOR SECONDARY SCHOOL	765	
11790671	NOKHATSHILE SCHOOL	162	
11751780	NTLAVUKAZI JUNIOR SECONDARY SCHOOL	540	
11790727	LALANI SENIOR PRIMARY SCHOOL	201	
11790659	MKAMBATHI SCHOOL	232	

Ward 3 comprises of a total of 4043 registered voters.
Wyk 3 bestaan uit 'n totaal van 4043 geregistreerde kiesers.
 MIN VOTERS/KIESER 3404 NORM 4005 MAX VOTERS/KIESER 4606

VOTING DISTRICT No. STEMDISTRIK No.	VOTING STATION NAME STEMLOKAAL NAAM	NUMBER OF VOTERS GETAL KIESERS	SPLIT VD VERDEELDE SD
11750037	NTOLA JUNIOR SECONDARY SCHOOL	406	
11750149	NOMATHEBE JUNIOR SECONDARY SCHOOL	500	
11750060	YANGE SCHOOL	191	
11750048	DUMSI SCHOOL	400	
11751971	LUKHANYO SENIOR PRIMARY SCHOOL	304	
11810629	MBIBA JUNIOR SECONDARY SCHOOL	387	

11750903	NTSHANGASE JUNIOR SECONDARY SCHOOL	262
11751229	IZIBANZINI JUNIOR SECONDARY SCHOOL	210
11751522	NTSHANGASE SENIOR PRIMARY SCHOOL	335
11751533	LONGWENI SENIOR PRIMARY SCHOOL	298
11751544	NTSHANGASE KRESTU CHURCH	295
11751555	BONDA JUNIOR SECONDARY SCHOOL	455

Ward 4 comprises of a total of 3541 registered voters.
Wyk 4 bestaan uit 'n totaal van 3541 geregistreerde kiesers.
 MIN VOTERS/KIESER 3404 NORM 4005 MAX VOTERS/KIESER 4606

VOTING DISTRICT No. STEMDISTRIK No.	VOTING STATION NAME STEMLOKAAL NAAM	NUMBER OF VOTERS GETAL KIESERS	SPLIT VD VERDEELDE SD
11750161	MDENI JUNIOR SECONDARY SCHOOL	992	
11750914	LUDEKE SCHOOL	695	
11751870	EMAZWENI JUNIOR SECONDARY SCHOOL	354	
11752196	TEMPORARY VOTING STATION (LUDEKE PRESIDENT)	225	
11751803	MABUTHO JUNIOR SECONDARY SCHOOL	365	
11751083	MDIKISO JUNIOR SECONDARY SCHOOL	468	
11751319	MARELANE SENIOR SECONDARY SCHOOL	442	

Ward 5 comprises of a total of 3412 registered voters.
Wyk 5 bestaan uit 'n totaal van 3412 geregistreerde kiesers.
 MIN VOTERS/KIESER 3404 NORM 4005 MAX VOTERS/KIESER 4606

VOTING DISTRICT No. STEMDISTRIK No.	VOTING STATION NAME STEMLOKAAL NAAM	NUMBER OF VOTERS GETAL KIESERS	SPLIT VD VERDEELDE SD
11750329	GWALA JUNIOR SECONDARY SCHOOL	273	
11750857	MMANGWENI JUNIOR SECONDARY SCHOOL	685	
11750699	DLUNGWANA JUNIOR SECONDARY SCHOOL	261	
11750767	MTAVUNA JUNIOR SECONDARY SCHOOL	470	
11751814	EMBHOBHENI JUN SEC SCHOOL	672	
11751825	BHEKAMEVA JUNIOR SECONDARY SCHOOL	641	
11751881	LOWER GWALA JUNIOR SECONDARY SCHOOL	94	
11752039	MMANGWENI METHODIST CHURCH	316	

Ward 6 comprises of a total of 4582 registered voters.
Wyk 6 bestaan uit 'n totaal van 4582 geregistreerde kiesers.
 MIN VOTERS/KIESER 3404 NORM 4005 MAX VOTERS/KIESER 4606

VOTING DISTRICT No. STEMDISTRIK No.	VOTING STATION NAME STEMLOKAAL NAAM	NUMBER OF VOTERS GETAL KIESERS	SPLIT VD VERDEELDE SD
11750598	MJANYELLWA JUNIOR SECONDARY SCHOOL	973	
11750611	SONTSELE JUNIOR SECONDARY SCHOOL	699	
11750655	MHLANGA JUNIOR SECONDARY SCHOOL	1063	
11751050	MNDELA JUNIOR SECONDARY SCHOOL	474	
11750701	GUQA JUNIOR SECONDARY SCHOOL	140	
11750712	TSAWANA JUNIOR SECONDARY SCHOOL	403	
11751263	JALI JUNIOR SECONDARY SCHOOL	441	
11752073	JALI TSHETSHI HALL	389	

Ward 7 comprises of a total of 3592 registered voters.
Wyk 7 bestaan uit 'n totaal van 3592 geregistreerde kiesers.

MIN VOTERS/KIESER 3404

NORM 4005

MAX VOTERS/KIESER 4606

VOTING DISTRICT No. STEMDISTRIK No.	VOTING STATION NAME STEMLOKAAL NAAM	NUMBER OF VOTERS GETAL KIESERS	SPLIT VD VERDEELDE SD
11752219	JERUSALEM AFRICA CHURCH	230	
11750622	NTUKAI SENIOR SECONDARY SCHOOL	622	
11750688	IZININI JUNIOR SECONDARY SCHOOL	250	
11751869	MZAMBA JUNIOR SECONDARY SCHOOL	585	
11751768	VUKUZENZELE DISABLED SCHOOL	479	
11751904	NDUNGE JUNIOR SECONDARY SCHOOL	169	
11751094	KHALENI JUNIOR SECONDARY SCHOOL	421	
11750262	MAJAZI JUNIOR SECONDARY SCHOOL	445	
11751892	GECELO SENIOR PRIMARY SCHOOL	391	

Ward 8 comprises of a total of 4482 registered voters.
Wyk 8 bestaan uit 'n totaal van 4482 geregistreerde kiesers.

MIN VOTERS/KIESER 3404

NORM 4005

MAX VOTERS/KIESER 4606

VOTING DISTRICT No. STEMDISTRIK No.	VOTING STATION NAME STEMLOKAAL NAAM	NUMBER OF VOTERS GETAL KIESERS	SPLIT VD VERDEELDE SD
11811248	NDAKENI NEW SITES PRE-SCHOOL	278	
11811226	DUMENI PRE-SCHOOL	402	
11810618	DUDUMENI JUNIOR SECONDARY SCHOOL	368	
11810832	SOMTSEWU JUNIOR SECONDARY SCHOOL	375	
11810102	GALATYENI JUNIOR SECONDARY SCHOOL	406	
11810843	CAMAGU JUNIOR SECONDARY SCHOOL	472	

11810113	NCURA JUNIOR SECONDARY SCHOOL	851
11810865	DUDUMENI NEW LITE CHURCH	344
11810135	MAPHAKATHI JUNIOR SECONDARY SCHOOL	480
11810876	KU-BHA SENIOR PRIMARY SCHOOL	317
11811103	BUKUVENI SCHOOL	189

Ward 9 comprises of a total of 3923 registered voters.
Wyk 9 bestaan uit 'n totaal van 3923 geregistreerde kiesers.

MIN VOTERS/KIESER 3404 NORM 4005 MAX VOTERS/KIESER 4606

VOTING DISTRICT No. STEMDISTRIK No.	VOTING STATION NAME STEMLOKAAL NAAM	NUMBER OF VOTERS GETAL KIESERS	SPLIT VD VERDEELDE SD
11810900	ZANOKHANYO JUNIOR SECONDARY SCHOOL	275	
11810573	LUPILISWENI JUNIOR SECONDARY SCHOOL	397	
11750307	MPETSHWA JUNIOR SECONDARY SCHOOL	648	
11810089	SWANE JUNIOR SECONDARY SCHOOL	903	
11810090	NDAYINI PRIMARY SECONDARY SCHOOL	219	
11810124	NQABENI JUNIOR SECONDARY SCHOOL	412	
11810911	ENVIS METHODIST CHURCH	464	
11810898	MATSHEZI SENIOR PRIMARY SCHOOL	285	
11810887	NQABENI GOSPEL AFRICAN CHURCH	320	

Ward 10 comprises of a total of 4068 registered voters.
Wyk 10 bestaan uit 'n totaal van 4068 geregistreerde kiesers.

MIN VOTERS/KIESER 3404 NORM 4005 MAX VOTERS/KIESER 4606

VOTING DISTRICT No. STEMDISTRIK No.	VOTING STATION NAME STEMLOKAAL NAAM	NUMBER OF VOTERS GETAL KIESERS	SPLIT VD VERDEELDE SD
11811215	UPPER MGODINI WESLEY CHURCH	196	
11811204	NTLENZI PRE-SCHOOL	244	
11811114	LOWER MKHOMANE PRIMARY SCHOOL	262	
11810854	MGODINI JUNIOR SECONDARY SCHOOL	680	
11810584	ROCKVILLE JUNIOR SECONDARY SCHOOL	364	
11810405	NTLALONTSHA JUNIOR SECONDARY SCHOOL	509	
11810258	EMCETHENI JUNIOR SECONDARY SCHOOL	573	
11810157	BATVILLE JUNIOR PRIMARY SCHOOL	273	
11810236	MKHOMANI JUNIOR SECONDARY SCHOOL	713	
11811260	NTLENZI FARMERS HALL	254	

Ward 11 comprises of a total of 3968 registered voters.
Wyk 11 bestaan uit 'n totaal van 3968 geregistreerde kiesers.
 MIN VOTERS/KIESER 3404 NORM 4005 MAX VOTERS/KIESER 4606

VOTING DISTRICT No. STEMDISTRIK No.	VOTING STATION NAME STEMLOKAAL NAAM	NUMBER OF VOTERS GETAL KIESERS	SPLIT VD VERDEELDE SD
11810719	QASA METHODIST CHURCH HALL	249	
11810764	CHRISTIAN CATHOLIC CHURCH	204	
11810281	PELE-PELE JUNIOR SECONDARY SCHOOL	608	
11810427	MANDLOBE JUNIOR SECONDARY SCHOOL	561	
11810225	VUKAYIBAMBE SENIOR SECONDARY SCHOOL	633	
11810168	LUCWABA JUNIOR SECONDARY SCHOOL	408	
11811125	SWANE RIDGE JUNIOR SECONDARY SCHOOL	310	
11811091	GINISWAYO TENT.	305	
11810270	SIGODLWENI JUNIOR SECONDARY SCHOOL	690	

Ward 12 comprises of a total of 3885 registered voters.
Wyk 12 bestaan uit 'n totaal van 3885 geregistreerde kiesers.
 MIN VOTERS/KIESER 3404 NORM 4005 MAX VOTERS/KIESER 4606

VOTING DISTRICT No. STEMDISTRIK No.	VOTING STATION NAME STEMLOKAAL NAAM	NUMBER OF VOTERS GETAL KIESERS	SPLIT VD VERDEELDE SD
11750105	NDINOMNTU JUNIOR PRIMARY SCHOOL	301	
11750015	MHLABI JUNIOR SECONDARY SCHOOL	505	
11810821	DUMILE SENIOR PRIMARY SCHOOL	442	
11811259	NTLANEZWE PRE-SCHOOL	287	
11810393	MFUNDAMBINI JUNIOR SECONDARY SCHOOL	532	
11750420	MZAMBANA JUNIOR SECONDARY SCHOOL	434	
11751195	NKUNDLA JUNIOR SECONDARY SCHOOL	719	
11751207	DIAMOND JUNIOR SECONDARY SCHOOL	665	

Ward 13 comprises of a total of 4152 registered voters.
Wyk 13 bestaan uit 'n totaal van 4152 geregistreerde kiesers.
 MIN VOTERS/KIESER 3404 NORM 4005 MAX VOTERS/KIESER 4606

VOTING DISTRICT No. STEMDISTRIK No.	VOTING STATION NAME STEMLOKAAL NAAM	NUMBER OF VOTERS GETAL KIESERS	SPLIT VD VERDEELDE SD
11750150	NONKQUBELA JUNIOR PRIMARY SCHOOL	576	
11750127	MATWEBU SCHOOL	421	
11750464	DIDI HIGHER PRIMARY SCHOOL	761	

11751779	MATHWEBU ST MATHEWS CHURCH	425
11751218	KHOTSHO JUNIOR SECONDARY SCHOOL	444
11750284	NGCINGO JUNIOR SECONDARY SCHOOL	946
11751746	ZAMILIZWE SENIOR PRIMARY SCHOOL	579

Ward 14 comprises of a total of 4080 registered voters.
Wyk 14 bestaan uit 'n totaal van 4080 geregistreerde kiesers.
 MIN VOTERS/KIESER 3404 NORM 4005 MAX VOTERS/KIESER 4606

VOTING DISTRICT No. STEMDISTRIK No.	VOTING STATION NAME STEMLOKAAL NAAM	NUMBER OF VOTERS GETAL KIESERS	SPLIT VD VERDEELDE SD
11750172	LUTHULINI JUNIOR SECONDARY SCHOOL	773	
11751498	MBONGWENI TRIBAL AUTHORITY	255	
11751061	QADU JUNIOR SECONDARY SCHOOL	482	
11751960	EMKOLWENI TENT.	299	
11752084	TEMPORAY VOTING STATION (LUPHONDWENI VILLAG	181	
11751500	MBUNGWA JUNIOR SECONDARY SCHOOL	311	
11752095	MGOMANZI JUNIOR PRIMARY SCHOOL	103	
11751184	NGOJANE JUNIOR SECONDARY SCHOOL	251	
11752107	TEMPORARY VOTING STATION (MPETSHENI SPORT G	173	
11751038	MEJE JUNIOR SECONDARY SCHOOL	505	
11750576	MBHONGWENI JUNIOR SECONDARY SCHOOL	407	
11751487	MBONGWENI FREE METHODIST CHURCH	340	

Ward 15 comprises of a total of 3961 registered voters.
Wyk 15 bestaan uit 'n totaal van 3961 geregistreerde kiesers.
 MIN VOTERS/KIESER 3404 NORM 4005 MAX VOTERS/KIESER 4606

VOTING DISTRICT No. STEMDISTRIK No.	VOTING STATION NAME STEMLOKAAL NAAM	NUMBER OF VOTERS GETAL KIESERS	SPLIT VD VERDEELDE SD
11751117	NONTLANGA JUNIOR SECONDARY SCHOOL	246	
11751511	MAKHOSONKE JUNIOR PRIMARY SCHOOL	242	
11750194	LUSINDISWENI JUNIOR SECONDARY SCHOOL	515	
11750206	MNCWATHI JUNIOR SECONDARY SCHOOL	535	
11751443	KHANYAYO JUNIOR SECONDARY SCHOOL	397	
11751432	KHANYAYO RERORMED CHURCH	429	
11750239	CRITCHLOW JUNIOR SECONDARY SCHOOL	697	
11751421	CRITCHLO MISSION HALL	253	
11751915	LABANE TENT.	247	

11751410	OLD POLICE STATION OFFICE (TENT)	203
11751308	MABHEKUTENI JUNIOR SECONDARY SCHOOL	197

Ward 16 comprises of a total of 3660 registered voters.
Wyk 16 bestaan uit 'n totaal van 3660 geregistreerde kiesers.
 MIN VOTERS/KIESER 3404 NORM 4005 MAX VOTERS/KIESER 4606

VOTING DISTRICT No. STEMDISTRIK No.	VOTING STATION NAME STEMLOKAAL NAAM	NUMBER OF VOTERS GETAL KIESERS	SPLIT VD VERDEELDE SD
11750240	DLANGEZWA PRIMARY SCHOOL	226	
11750251	MBEKWA JUNIOR SECONDARY SCHOOL	751	
11750936	MLINDAZWE JUNIOR SECONDARY SCHOOL	539	
11751465	MTAYISE A.F.M CHURCH	332	
11751353	NDLOVIMILE JUNIOR SECONDARY SCHOOL	478	
11750431	MTAYISE JUNIOR SECONDARY SCHOOL	880	
11751454	AMAMPISI CRECHE HALL	454	

Ward 17 comprises of a total of 4530 registered voters.
Wyk 17 bestaan uit 'n totaal van 4530 geregistreerde kiesers.
 MIN VOTERS/KIESER 3404 NORM 4005 MAX VOTERS/KIESER 4606

VOTING DISTRICT No. STEMDISTRIK No.	VOTING STATION NAME STEMLOKAAL NAAM	NUMBER OF VOTERS GETAL KIESERS	SPLIT VD VERDEELDE SD
11750587	MBENYA JUNIOR SECONDARY SCHOOL	677	
11750745	NTSINGIZI JUNIOR SECONDARY SCHOOL	953	
11750565	NIKWE JUNIOR SECONDARY SCHOOL	870	
11751713	QANDASHE KUSHI A.U. CHURCH	138	
11750217	QANDASHE JUNIOR SECONDARY SCHOOL	802	
11751926	NONKQUBELA PRE-SCHOOL	413	
11750925	NTLAKWE JUNIOR SECONDARY SCHOOL	677	

Ward 18 comprises of a total of 4314 registered voters.
Wyk 18 bestaan uit 'n totaal van 4314 geregistreerde kiesers.
 MIN VOTERS/KIESER 3404 NORM 4005 MAX VOTERS/KIESER 4606

VOTING DISTRICT No. STEMDISTRIK No.	VOTING STATION NAME STEMLOKAAL NAAM	NUMBER OF VOTERS GETAL KIESERS	SPLIT VD VERDEELDE SD
11750026	MBANDANE JUNIOR SECONDARY SCHOOL	339	
11750442	MFUNELI JUNIOR SECONDARY SCHOOL	746	
11752220	MQONJWANA EKUTHULENI CHURCH	237	
11751689	REDOUBT A.F.M HALL	410	

11750992	MPUNZI DRIFT JUNIOR SECONDARY SCHOOL	318
11750509	NCENJANE JUNIOR SECONDARY SCHOOL	275
11751735	SIZOPHILA COMMUNITY & CHILD HELP CENTRE	436
11751724	MPONDONBINI SENIOR SECONDARY SCHOOL	296
11750879	LUNA JUNIOR SECONDARY SCHOOL	909
11752130	THEMBA MZIZE PRE SCHOOL	348

Ward 19 comprises of a total of 4385 registered voters.
Wyk 19 bestaan uit 'n totaal van 4385 geregistreerde kiesers.

MIN VOTERS/KIESER 3404 NORM 4005 MAX VOTERS/KIESER 4606

VOTING DISTRICT No. STEMDISTRIK No.	VOTING STATION NAME STEMLOKAAL NAAM	NUMBER OF VOTERS GETAL KIESERS	SPLIT VD VERDEELDE SD
11750093	MONTI JUNIOR SECONDARY SCHOOL	687	
11751476	MQENI JUNIOR SECONDARY SCHOOL	591	
11751027	THOKOZANI JUNIOR SECONDARY SCHOOL	522	
11750228	NTLOZELO JUNIOR SECONDARY SCHOOL	708	
11751601	AME CHURCH	440	
11751757	ST PETERS ANGLICAN CHURCH	388	
11751285	VUYISILE JUNIOR SECONDARY SCHOOL	754	
11751612	MBABAZWE SENIOR PRIMARY SCHOOL	295	

Ward 20 comprises of a total of 4341 registered voters.
Wyk 20 bestaan uit 'n totaal van 4341 geregistreerde kiesers.

MIN VOTERS/KIESER 3404 NORM 4005 MAX VOTERS/KIESER 4606

VOTING DISTRICT No. STEMDISTRIK No.	VOTING STATION NAME STEMLOKAAL NAAM	NUMBER OF VOTERS GETAL KIESERS	SPLIT VD VERDEELDE SD
11751623	LUKHOLO REFORMED CHURCH	358	
11751702	NONGEKE SENIOR SECONDARY SCHOOL	623	
11750868	MADADANA JUNIOR SECONDARY SCHOOL	730	
11751656	KRESTU CHURCH	462	
11750969	ETHRIDGE JUNIOR SECONDARY SCHOOL	902	
11751667	ST. FRANCIS ANGLICAN CHURCH	243	
11750453	LINDOKUHLE JUNIOR SECONDARY SCHOOL	542	
11751690	STANFORD JUNIOR SECONDARY SCHOOL	481	

Ward 21 comprises of a total of 3691 registered voters.
Wyk 21 bestaan uit 'n totaal van 3691 geregistreerde kiesers.

MIN VOTERS/KIESER 3404 NORM 4005 MAX VOTERS/KIESER 4606

VOTING DISTRICT No. STEMDISTRIK No.	VOTING STATION NAME STEMLOKAAL NAAM	NUMBER OF VOTERS GETAL KIESERS	SPLIT VD VERDEELDE SD
11750510	GREENVILLE JUNIOR SECONDARY SCHOOL	1096	
11750543	NTIKA JUNIOR SECONDARY SCHOOL	627	
11751678	NOBAMBA JUNIOR SECONDARY SCHOOL	263	
11751645	GREENVILLE HOSPITAL	571	
11751252	LANGALETHU JUNIOR SECONDARY SCHOOL	807	
11752242	GREENVILLE AME CHURCH	327	

Ward 22 comprises of a total of 4226 registered voters.
Wyk 22 bestaan uit 'n totaal van 4226 geregistreerde kiesers.
 MIN VOTERS/KIESER 3404 NORM 4005 MAX VOTERS/KIESER 4606

VOTING DISTRICT No. STEMDISTRIK No.	VOTING STATION NAME STEMLOKAAL NAAM	NUMBER OF VOTERS GETAL KIESERS	SPLIT VD VERDEELDE SD
11751409	MFOLOZI ROMAN CATHOLIC CHURCH	764	
11752141	NOMAGQWATHEKAN SENIOR SECONDARY SCHOOL	347	
11751634	LUKHOLO CHURCH	617	
11750824	MDELWA JUNIOR SECONDARY SCHOOL	541	
11750756	LUGWIJINI JUNIOR SECONDARY SCHOOL	851	
11750789	LUKHOLO JUNIOR SECONDARY SCHOOL	1106	

Ward 23 comprises of a total of 4223 registered voters.
Wyk 23 bestaan uit 'n totaal van 4223 geregistreerde kiesers.
 MIN VOTERS/KIESER 3404 NORM 4005 MAX VOTERS/KIESER 4606

VOTING DISTRICT No. STEMDISTRIK No.	VOTING STATION NAME STEMLOKAAL NAAM	NUMBER OF VOTERS GETAL KIESERS	SPLIT VD VERDEELDE SD
11751566	LINGELETHU SENIOR PRIMARY SCHOOL	651	
11751241	PLANGWENI JUNIOR SECONDARY SCHOOL	1402	
11751364	VULINDLELA COMPREHENSIVE HIGH SCHOOL	612	
11752264	BENZ SPAZA SHOP (TENT).	343	
11750970	MARINA JUNIOR SECONDARY SCHOOL	1215	

Ward 24 comprises of a total of 4047 registered voters.
Wyk 24 bestaan uit 'n totaal van 4047 geregistreerde kiesers.
 MIN VOTERS/KIESER 3404 NORM 4005 MAX VOTERS/KIESER 4606

VOTING DISTRICT No. STEMDISTRIK No.	VOTING STATION NAME STEMLOKAAL NAAM	NUMBER OF VOTERS GETAL KIESERS	SPLIT VD VERDEELDE SD
11752297	POWER OF GOD CHURCH HALL	419	
11750497	MZAMBA MOUTH CHURCH	434	

VOTING DISTRICT No. STEMDISTRIK No.	VOTING STATION NAME STEMLOKAAL NAAM	NUMBER OF VOTERS GETAL KIESERS	SPLIT VD VERDEELDE SD
11752017	SILANGWE SPS	388	
11752062	SIZINDENI SPORTS GROUND	219	
11750486	CLARKVILLE JUNIOR SECONDARY SCHOOL	438	
11750723	NKANTOLO JUNIOR SECONDARY SCHOOL	542	
11752028	TALENI SENIOR PRIMARY SCHOOL	211	
11751791	MLAMBONDABA JUNIOR SECONDARY SCHOOL	541	
11750330	QUNGEBE JUNIOR SECONDARY SCHOOL	595	
11751296	QOBO JUNIOR SECONDARY SCHOOL	672	

Ward 28 comprises of a total of 4209 registered voters.
Wyk 28 bestaan uit 'n totaal van 4209 geregistreerde kiesers.
 MIN VOTERS/KIESER 3404 NORM 4005 MAX VOTERS/KIESER 4606

VOTING DISTRICT No. STEMDISTRIK No.	VOTING STATION NAME STEMLOKAAL NAAM	NUMBER OF VOTERS GETAL KIESERS	SPLIT VD VERDEELDE SD
11750554	GUMZANA JUNIOR SECONDARY SCHOOL	387	
11750802	ELITYENI JUNIOR SECONDARY SCHOOL	509	
11750958	SGIDI SENIOR PRIMARY SCHOOL	304	
11750385	DANGENI JUNIOR SECONDARY SCHOOL	461	
11751342	MNGUNGU JUNIOR SECONDARY SCHOOL	498	
11750352	SIDANGA JUNIOR SECONDARY SCHOOL	272	
11750374	TOPOZO JUNIOR SECONDARY SCHOOL	315	
11752231	HOLY SPIRIT IN ZION	146	
11750408	MDATYA JUNIOR SECONDARY SCHOOL	472	
11750419	MAHAHA SENIOR SECONDARY SCHOOL	392	
11752174	MNGUNGU HLALANATHI CHURCH HALL	183	
11752152	LUNDINI JUNIOR SECONDARY SCHOOL	270	

Ward 29 comprises of a total of 4319 registered voters.
Wyk 29 bestaan uit 'n totaal van 4319 geregistreerde kiesers.
 MIN VOTERS/KIESER 3404 NORM 4005 MAX VOTERS/KIESER 4606

VOTING DISTRICT No. STEMDISTRIK No.	VOTING STATION NAME STEMLOKAAL NAAM	NUMBER OF VOTERS GETAL KIESERS	SPLIT VD VERDEELDE SD
11750521	CWAKA JUNIOR SECONDARY SCHOOL	564	
11751982	NIKWE TENT.	800	
11752163	KWABULALA SPORT GROUND	266	

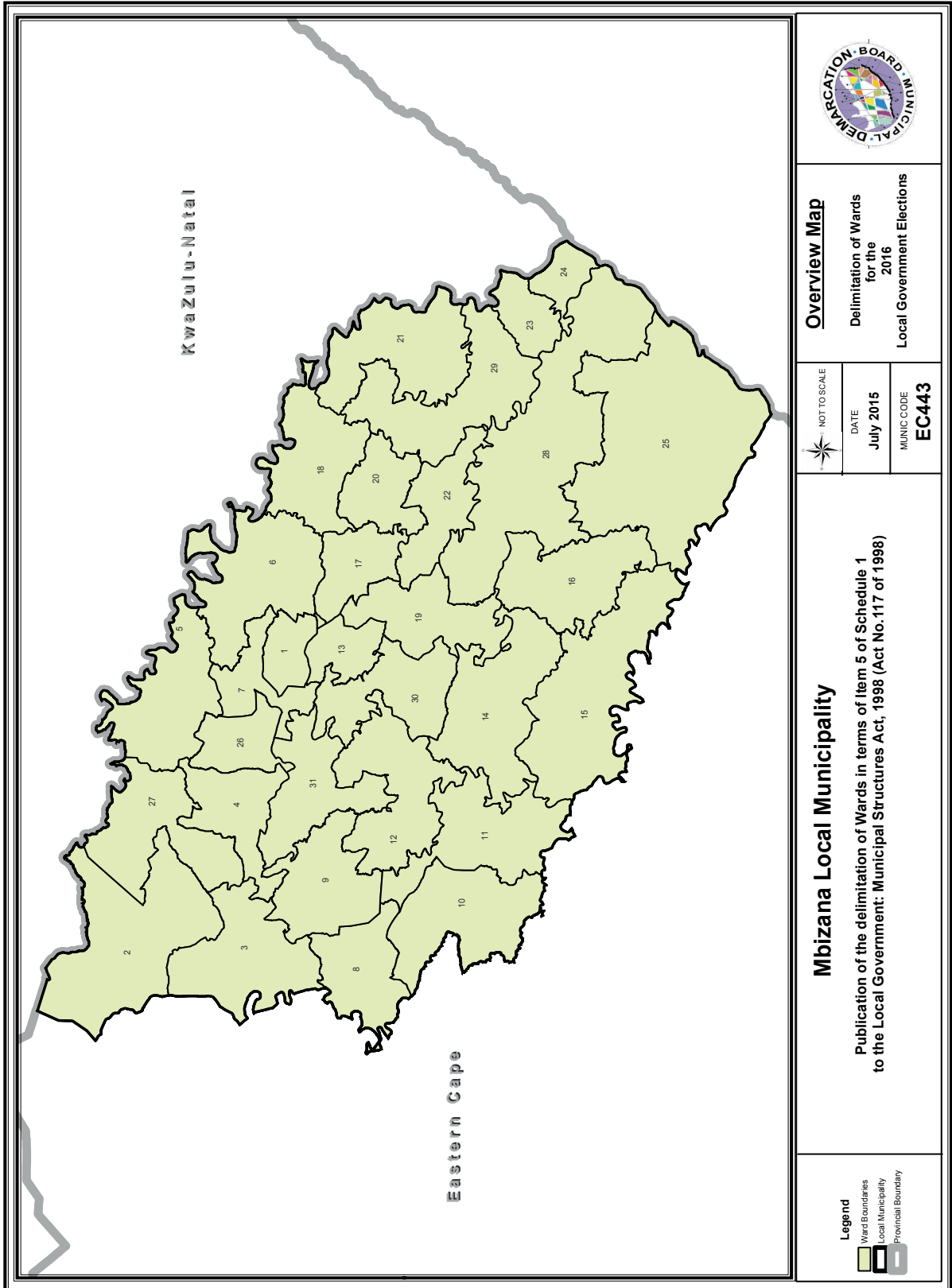
11751106	MFOLOZI JUNIOR SECONDARY SCHOOL	425
11750183	ZWELETHU JUNIOR SECONDARY SCHOOL	744
11751397	LITTLE EDEN PRIVATE SCHOOL	888
11751005	PHATHEKILE JUNIOR SECONDARY SCHOOL	632

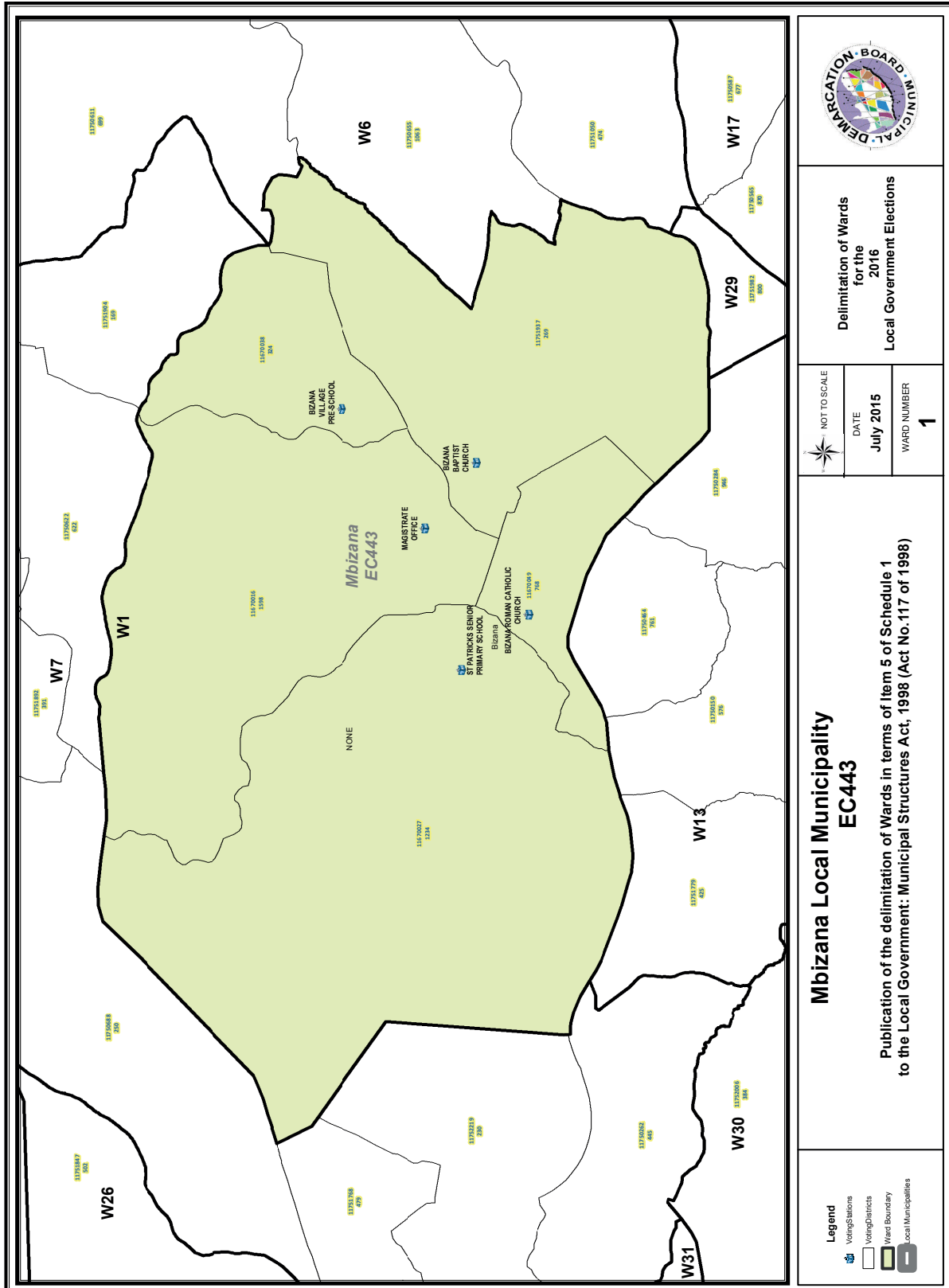
Ward 30 comprises of a total of 3536 registered voters.
Wyk 30 bestaan uit 'n totaal van 3536 geregistreerde kiesers.
 MIN VOTERS/KIESER 3404 NORM 4005 MAX VOTERS/KIESER 4606

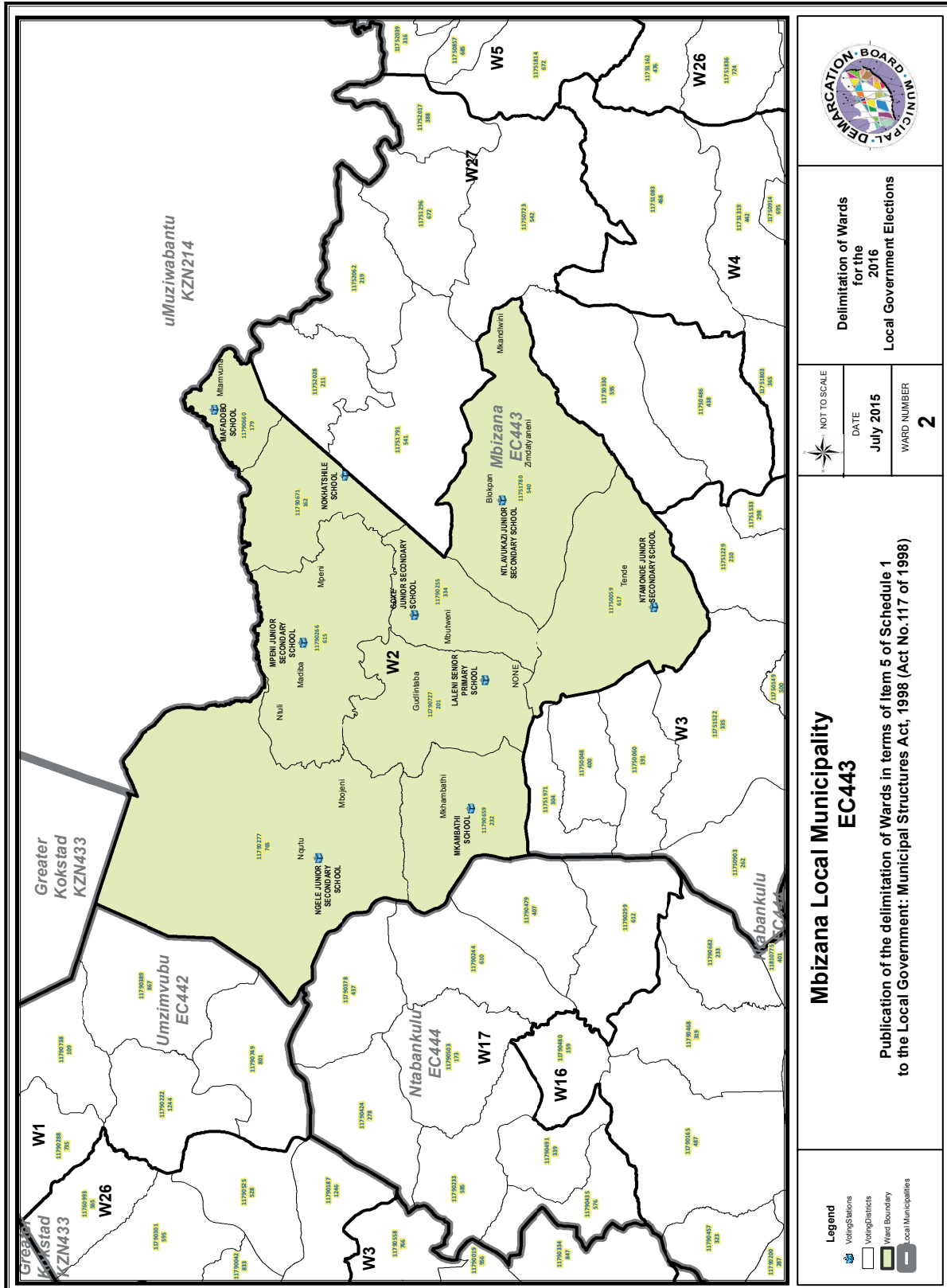
VOTING DISTRICT No. STEMDISTRIK No.	VOTING STATION NAME STEMLOKAAL NAAM	NUMBER OF VOTERS GETAL KIESERS	SPLIT VD VERDEELDE SD
11750138	VAYI JUNIOR SECONDARY SCHOOL	427	
11750071	DUTYINI JUNIOR SECONDARY SCHOOL	405	
11750082	NYANISWENI SENIOR PRIMARY SCHOOL	602	
11751588	MPENKULU SENIOR PRIMARY SCHOOL	246	
11751599	KOPANE JUNIOR PRIMARY SCHOOL	326	
11750891	NTSIMBINI JUNIOR SECONDARY SCHOOL	394	
11751274	ESITOFINI SENIOR PRIMARY SCHOOL	429	
11751993	NGQONGWENI JUNIOR PRIMARY SCHOOL	323	
11752006	MXINGA ROMAN CATHOLIC CHURCH	384	

Ward 31 comprises of a total of 3869 registered voters.
Wyk 31 bestaan uit 'n totaal van 3869 geregistreerde kiesers.
 MIN VOTERS/KIESER 3404 NORM 4005 MAX VOTERS/KIESER 4606

VOTING DISTRICT No. STEMDISTRIK No.	VOTING STATION NAME STEMLOKAAL NAAM	NUMBER OF VOTERS GETAL KIESERS	SPLIT VD VERDEELDE SD
11750116	ZIZITYANENI JUNIOR SECONDARY SCHOOL	795	
11752253	MZAMBA EXT. - TENT	328	
11750947	BULORWENI JUNIOR SECONDARY SCHOOL	360	
11750318	MAJAVU JUNIOR SECONDARY SCHOOL	510	
11751320	DYIFANI JUNIOR SECONDARY SCHOOL	479	
11751577	ZIZITYANENI ASSEMBLIES OF GOD CHURCH	393	
11752208	EMAZWENI CHIEF MTHENJWA PRE-SCHOOL	351	
11750835	KWANDELA JUNIOR SECONDARY SCHOOL	653	







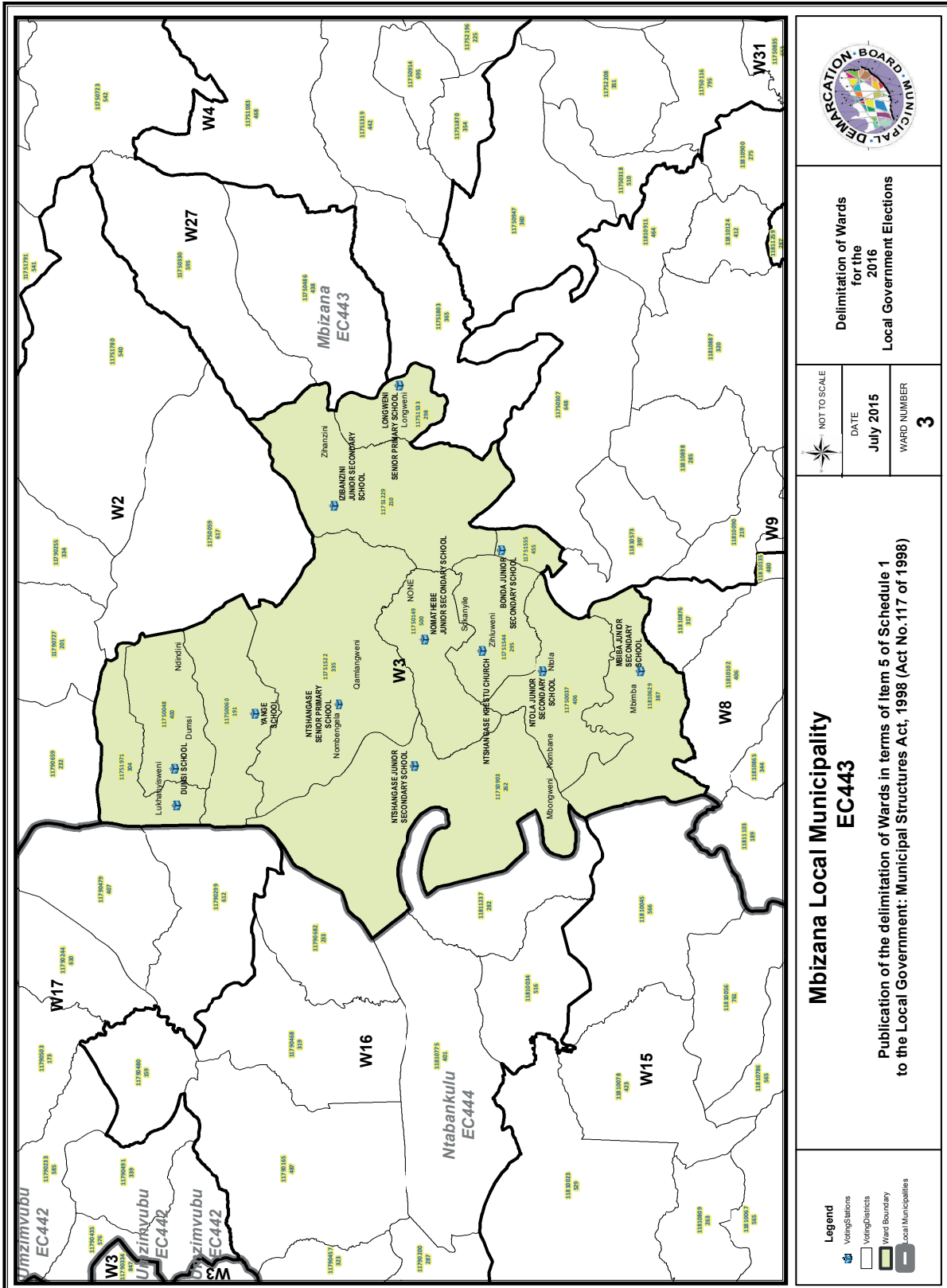
Delimitation of Wards
for the
2016
Local Government Elections

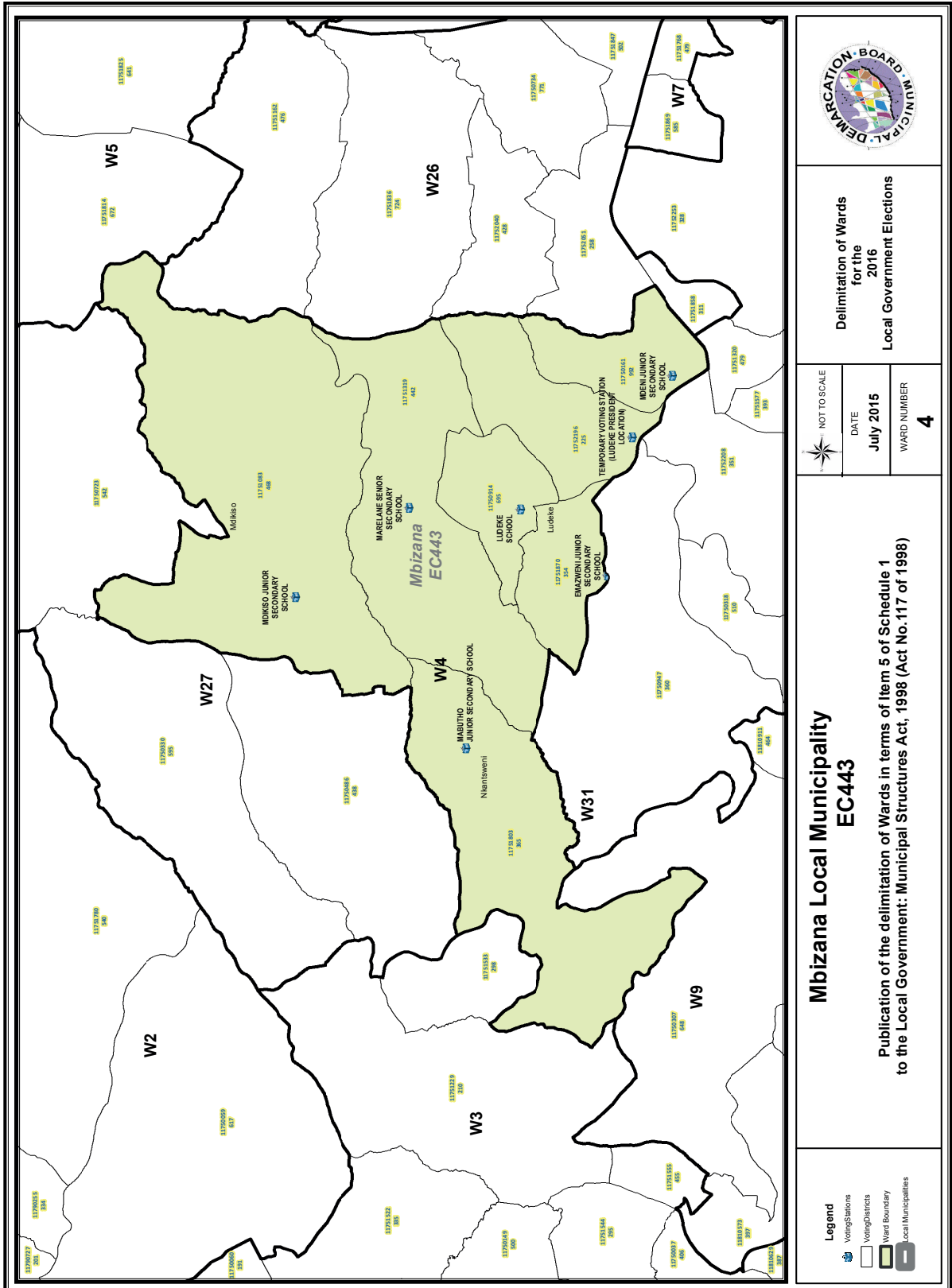
NOT TO SCALE
DATE
July 2015
WARD NUMBER
2

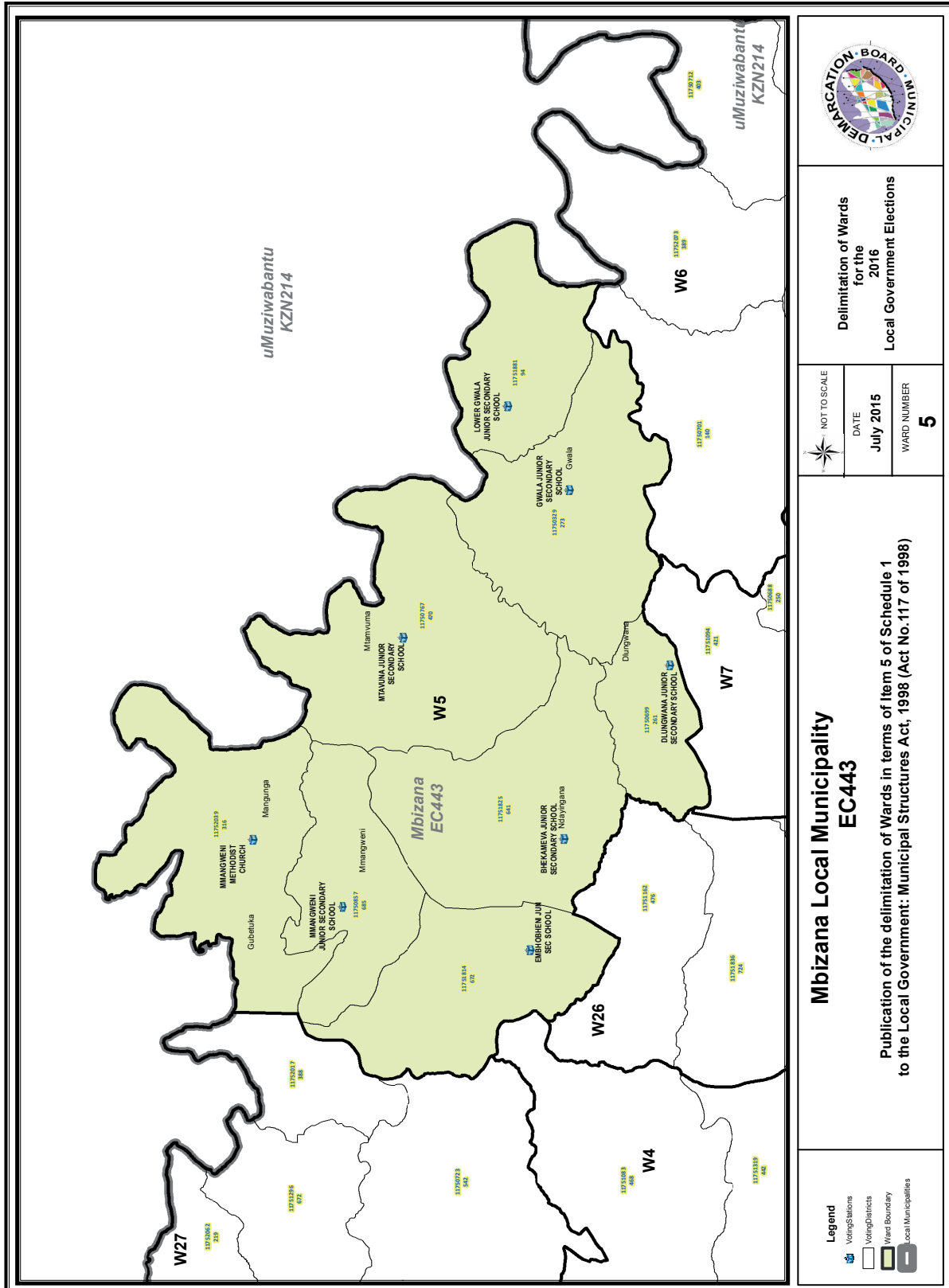
**Mbizana Local Municipality
EC443**

Publication of the delimitation of Wards in terms of Item 5 of Schedule 1
to the Local Government: Municipal Structures Act, 1998 (Act No.117 of 1998)

- Legend**
- Voting Stations
 - Voting Districts
 - Ward Boundary
 - Local Municipalities







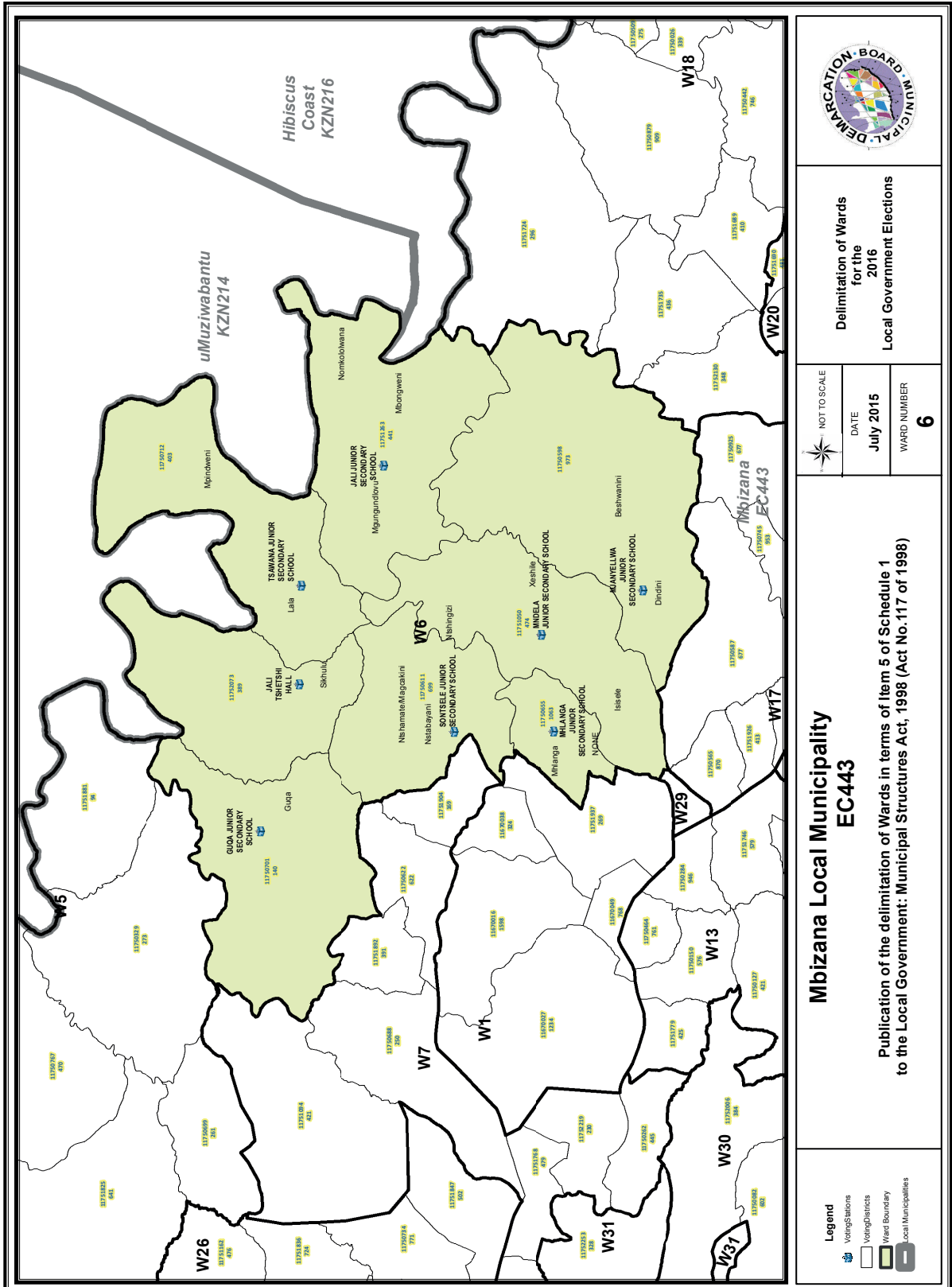
Delimitation of Wards
for the
2016
Local Government Elections

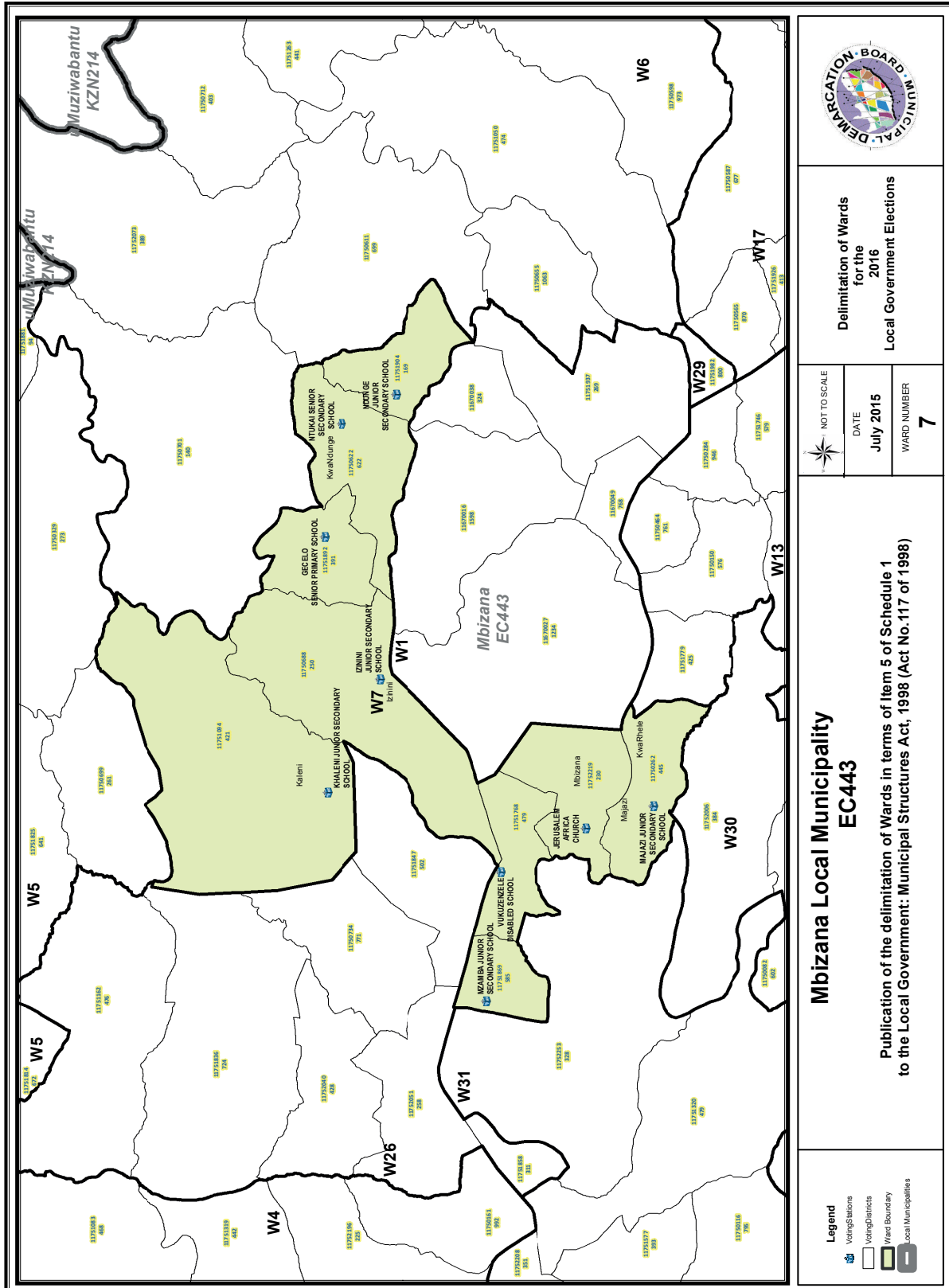
NOT TO SCALE
DATE July 2015
WARD NUMBER 5

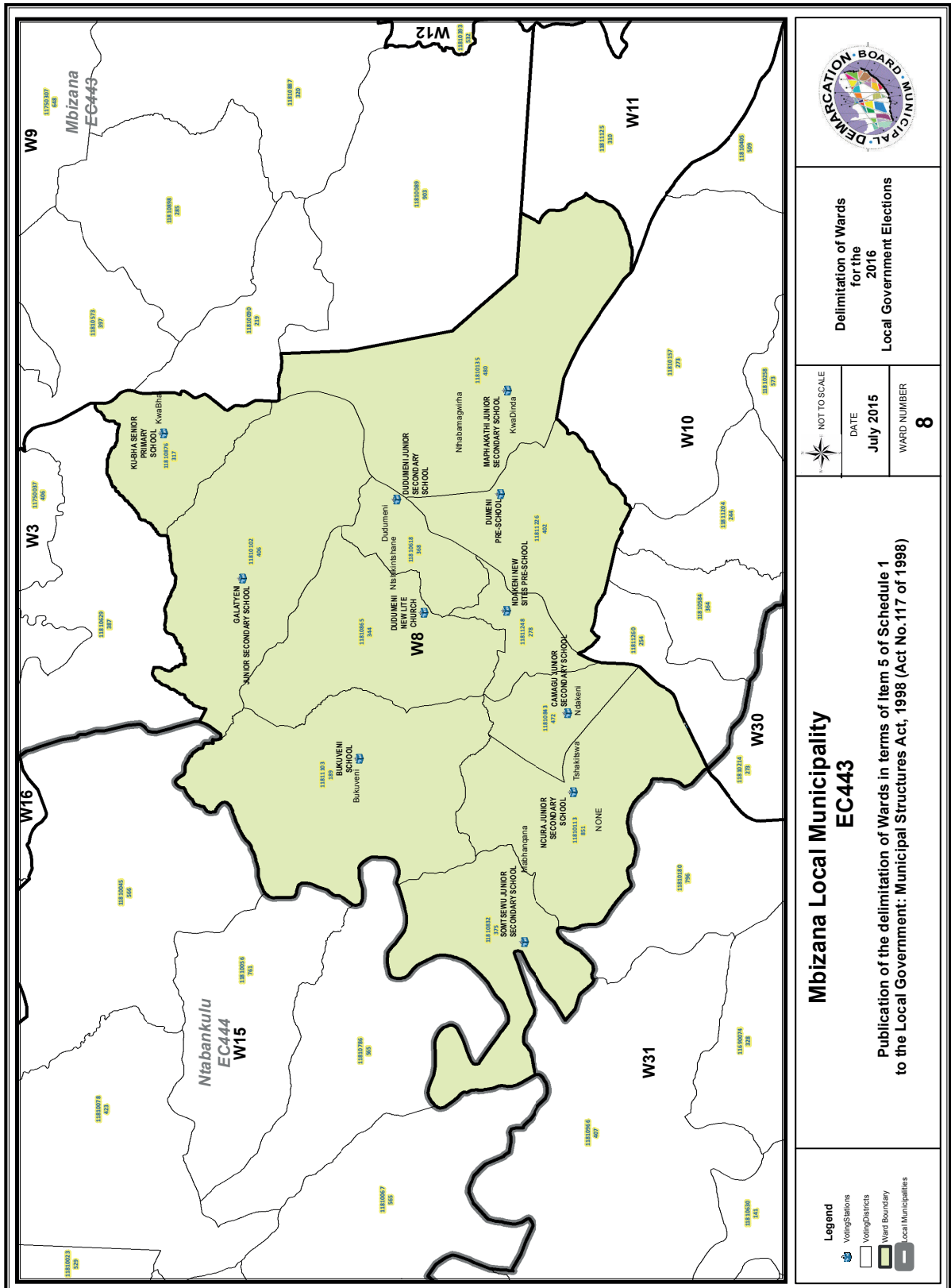
**Mbizana Local Municipality
EC443**

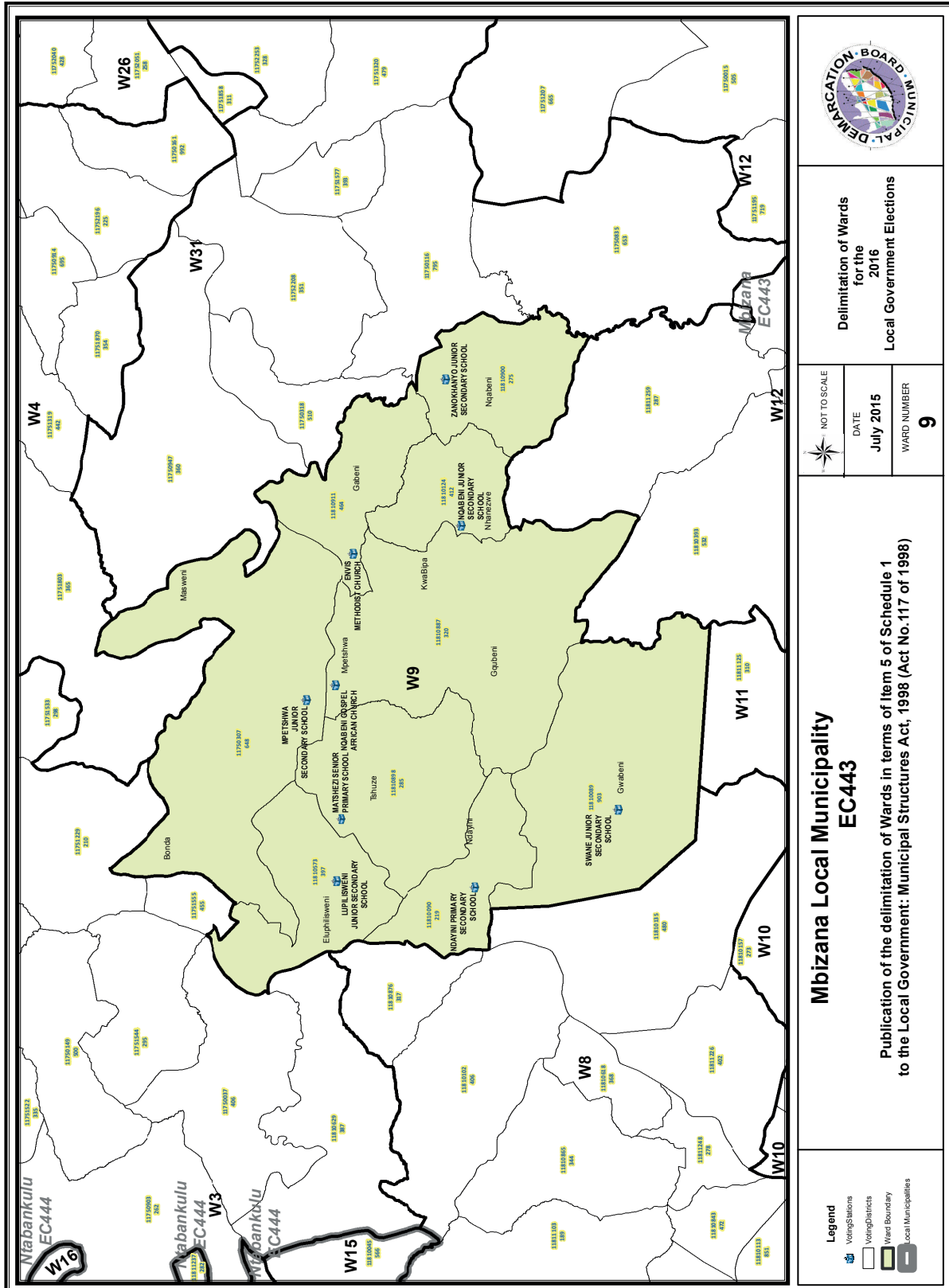
Publication of the delimitation of Wards in terms of Item 5 of Schedule 1
to the Local Government: Municipal Structures Act, 1998 (Act No.117 of 1998)

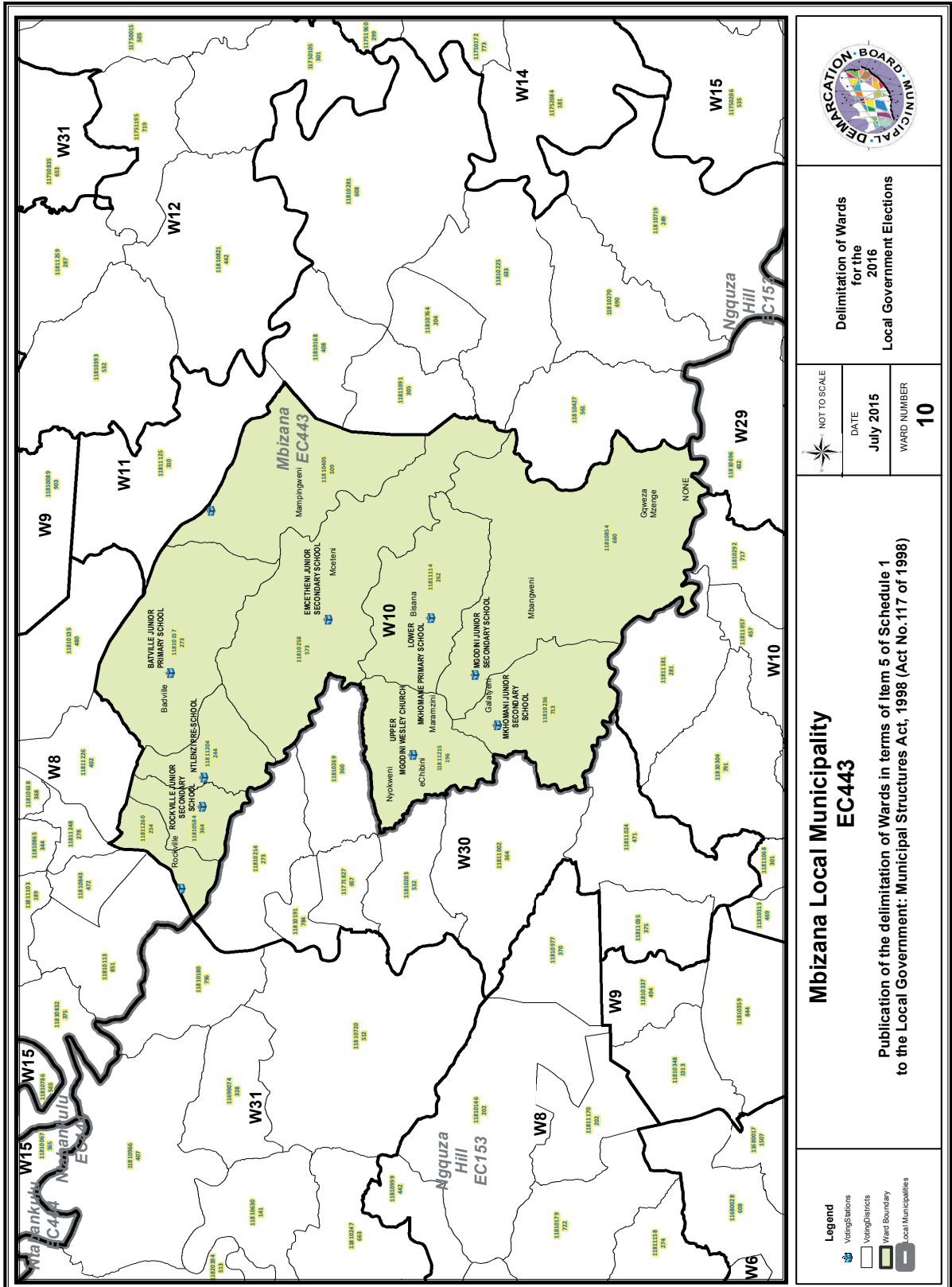
- Legend**
- Voting Stations
 - Voting Districts
 - Ward Boundary
 - Local Municipalities











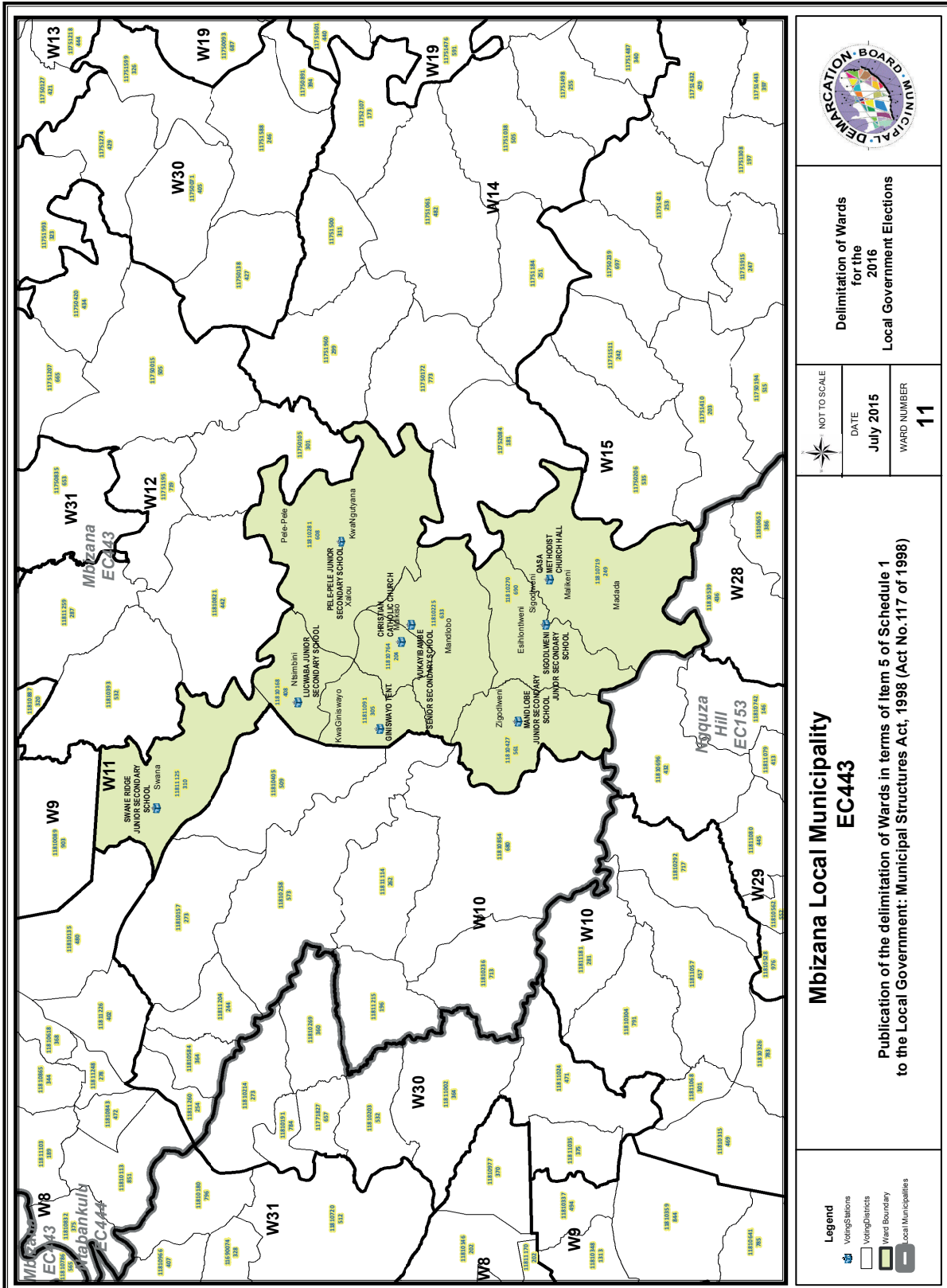
Delimitation of Wards
for the
2016
Local Government Elections

NOT TO SCALE
DATE
July 2015
WARD NUMBER
10

**Mbizana Local Municipality
EC443**

Publication of the delimitation of Wards in terms of Item 5 of Schedule 1
to the Local Government: Municipal Structures Act, 1998 (Act No.117 of 1998)

- Legend**
- Voting Stations
 - Voting Districts
 - Ward Boundary
 - Local Municipalities



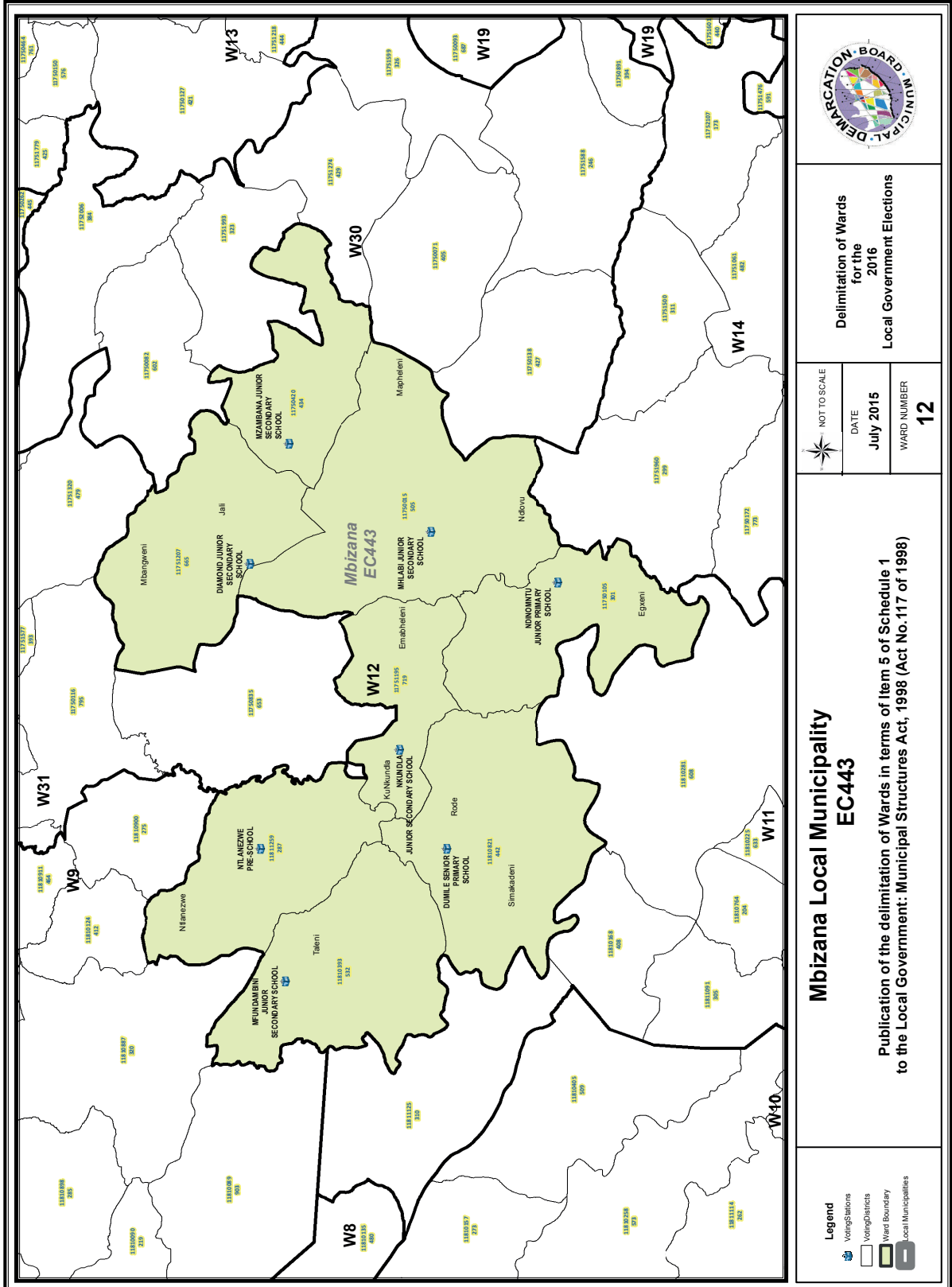
Delimitation of Wards
for the
2016
Local Government Elections

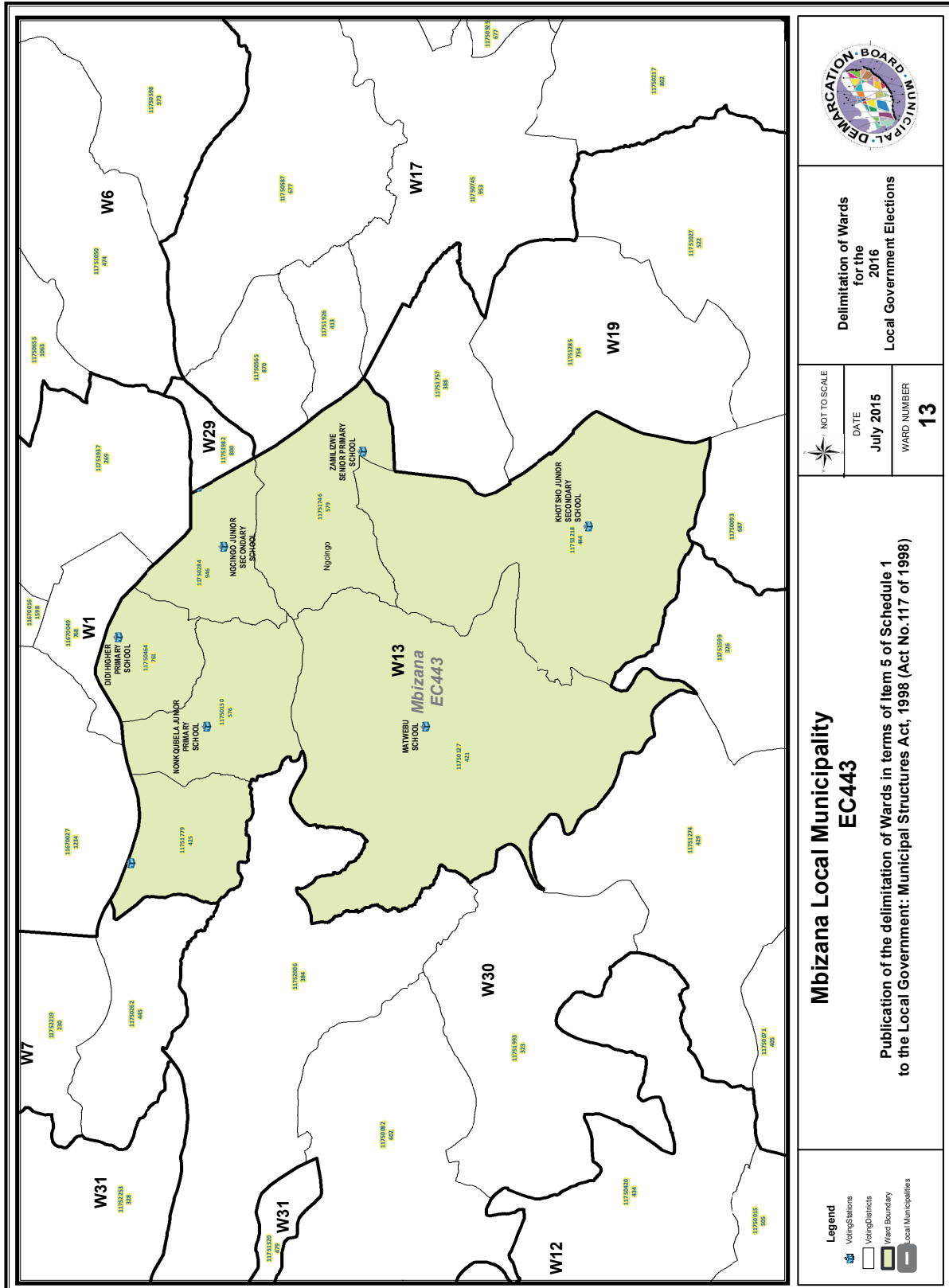
NOT TO SCALE
DATE July 2015
WARD NUMBER 11

**Mbizana Local Municipality
EC443**

Publication of the delimitation of Wards in terms of Item 5 of Schedule 1
to the Local Government: Municipal Structures Act, 1998 (Act No.117 of 1998)

- Legend**
- Voting Stations
 - Voting Districts
 - Ward Boundary
 - Local Municipalities





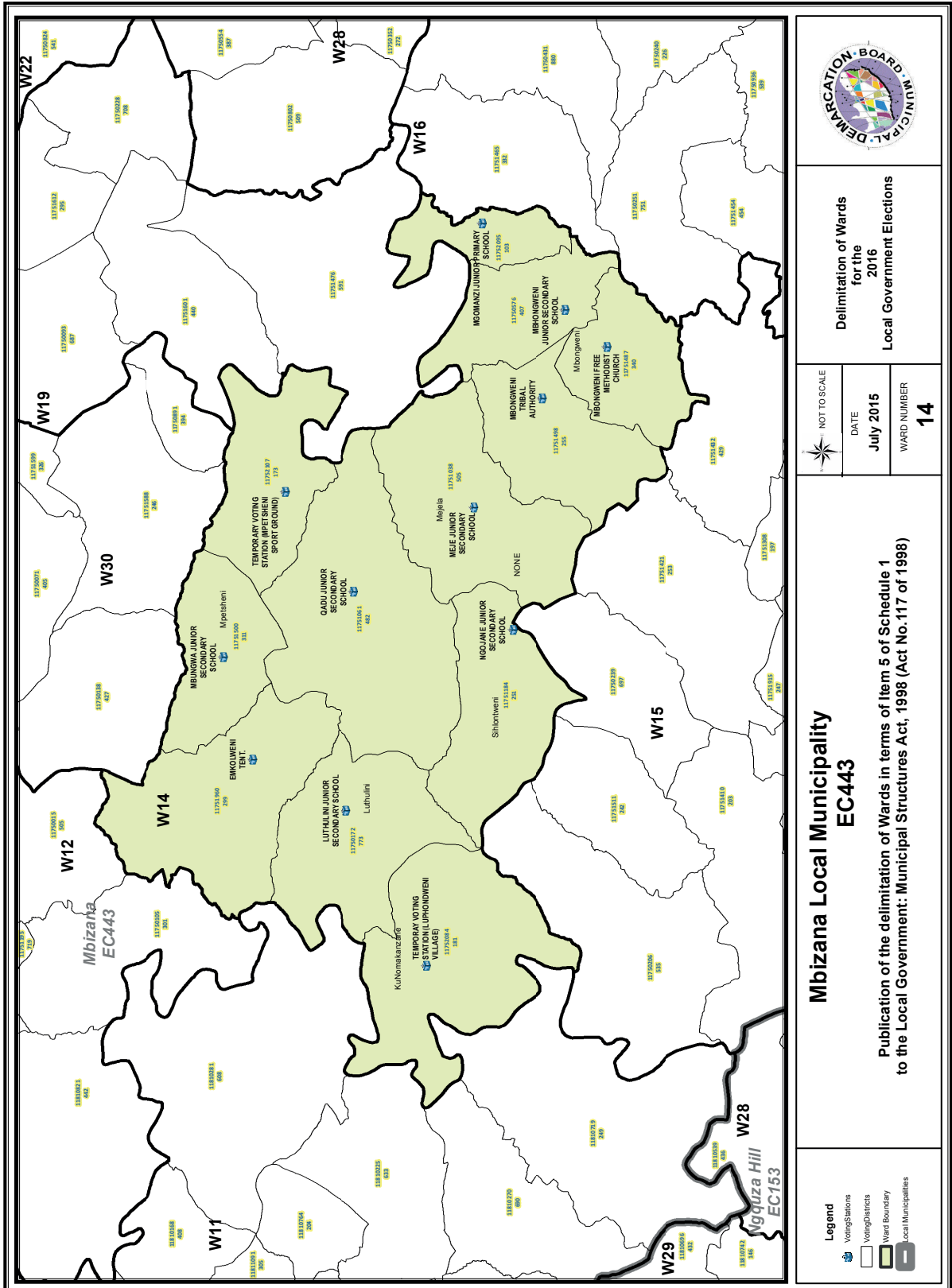
Delimitation of Wards
for the
2016
Local Government Elections

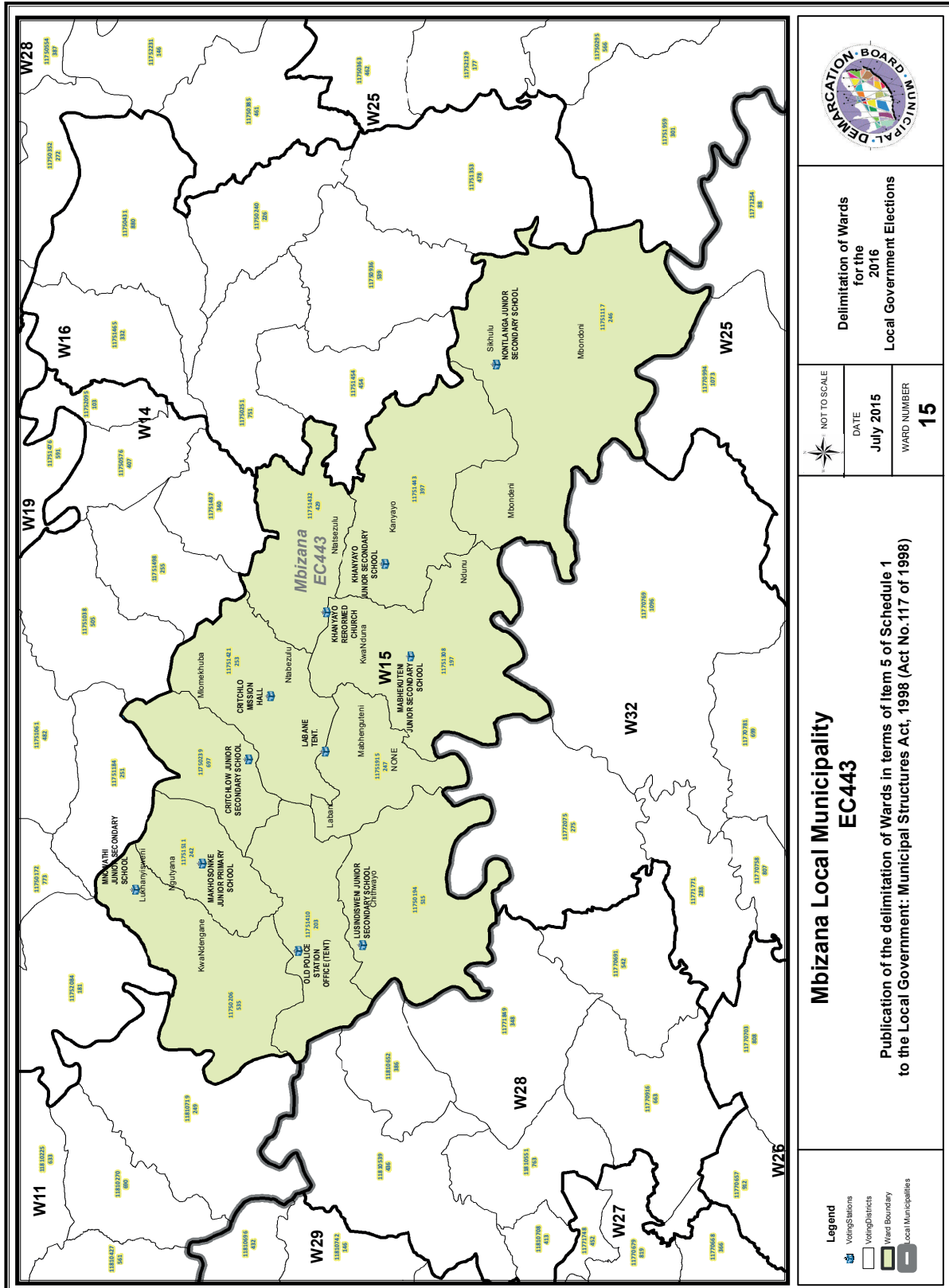
NOT TO SCALE
DATE
July 2015
WARD NUMBER
13

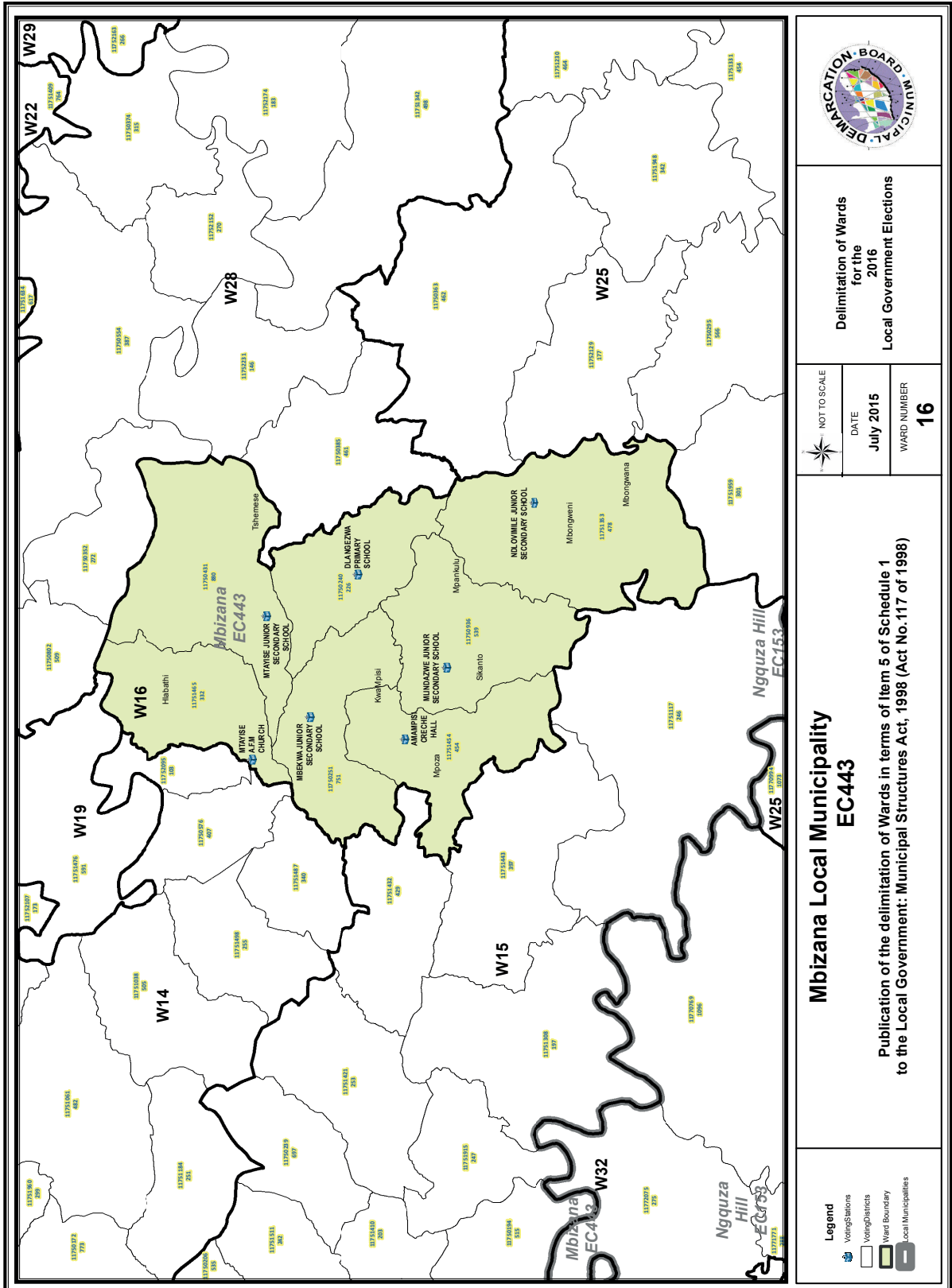
**Mbizana Local Municipality
EC443**

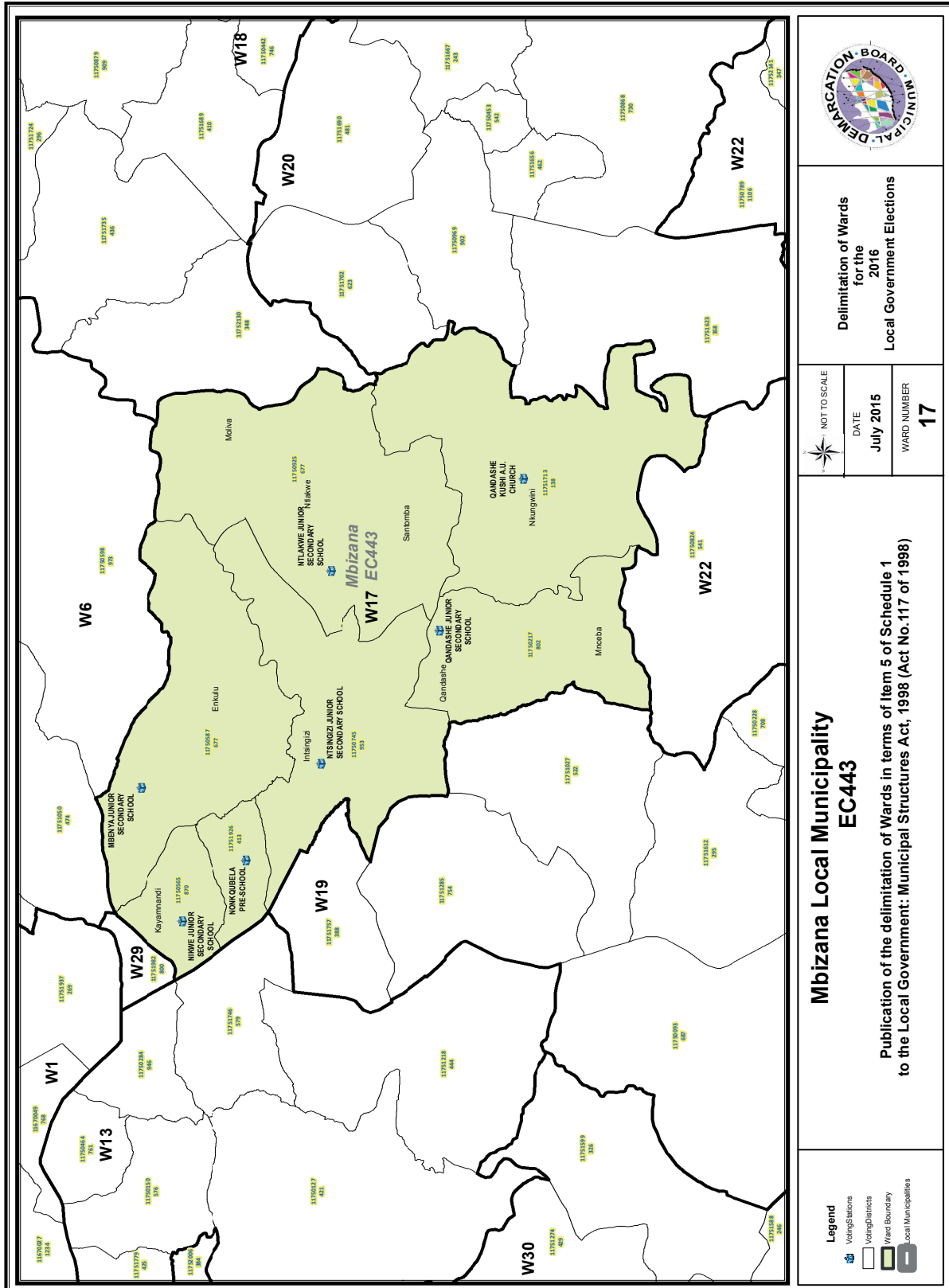
Publication of the delimitation of Wards in terms of Item 5 of Schedule 1
to the Local Government: Municipal Structures Act, 1998 (Act No.117 of 1998)

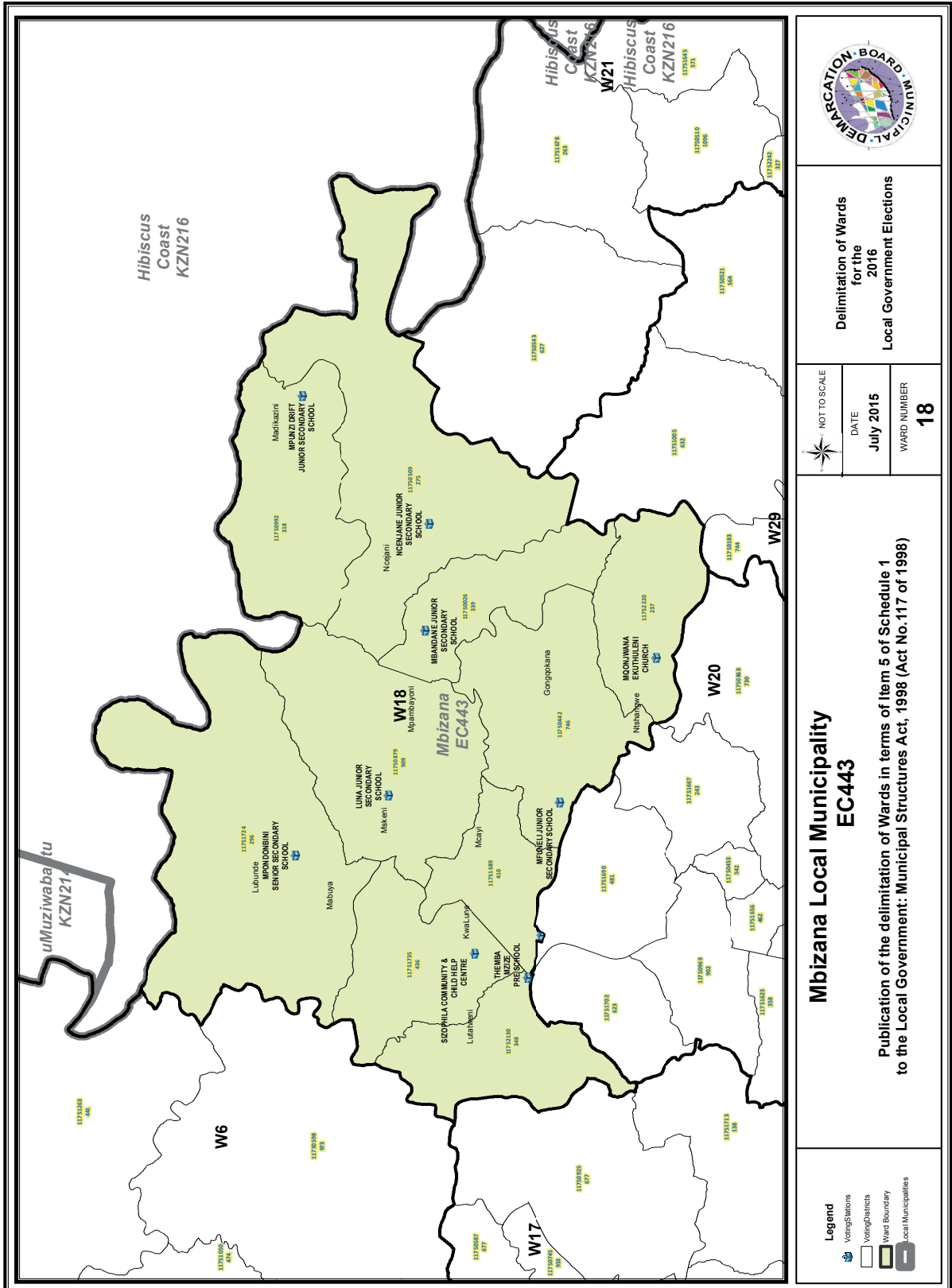
- Legend**
- Voting Stations
 - Voting Districts
 - Ward Boundary
 - Local Municipalities

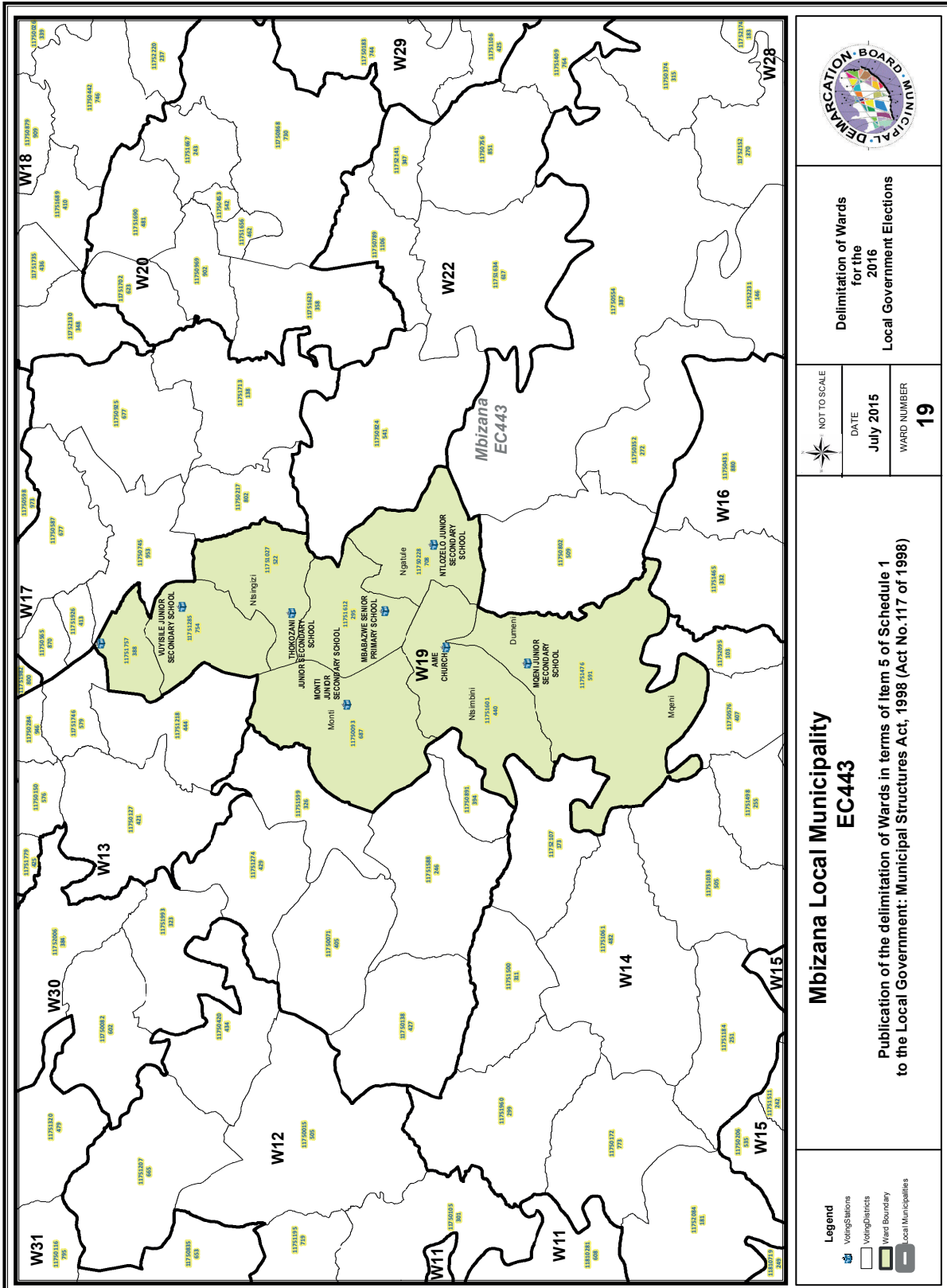


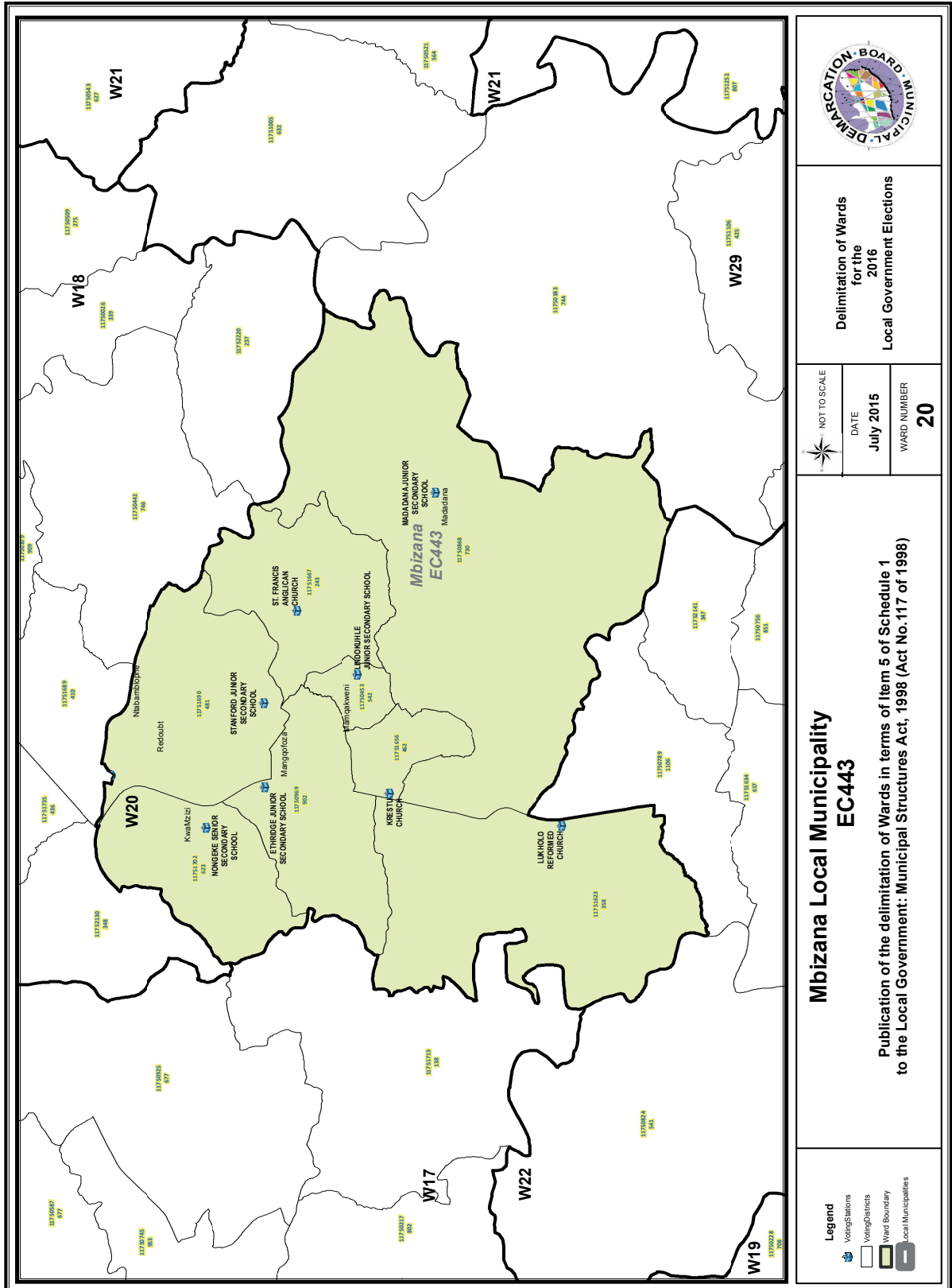


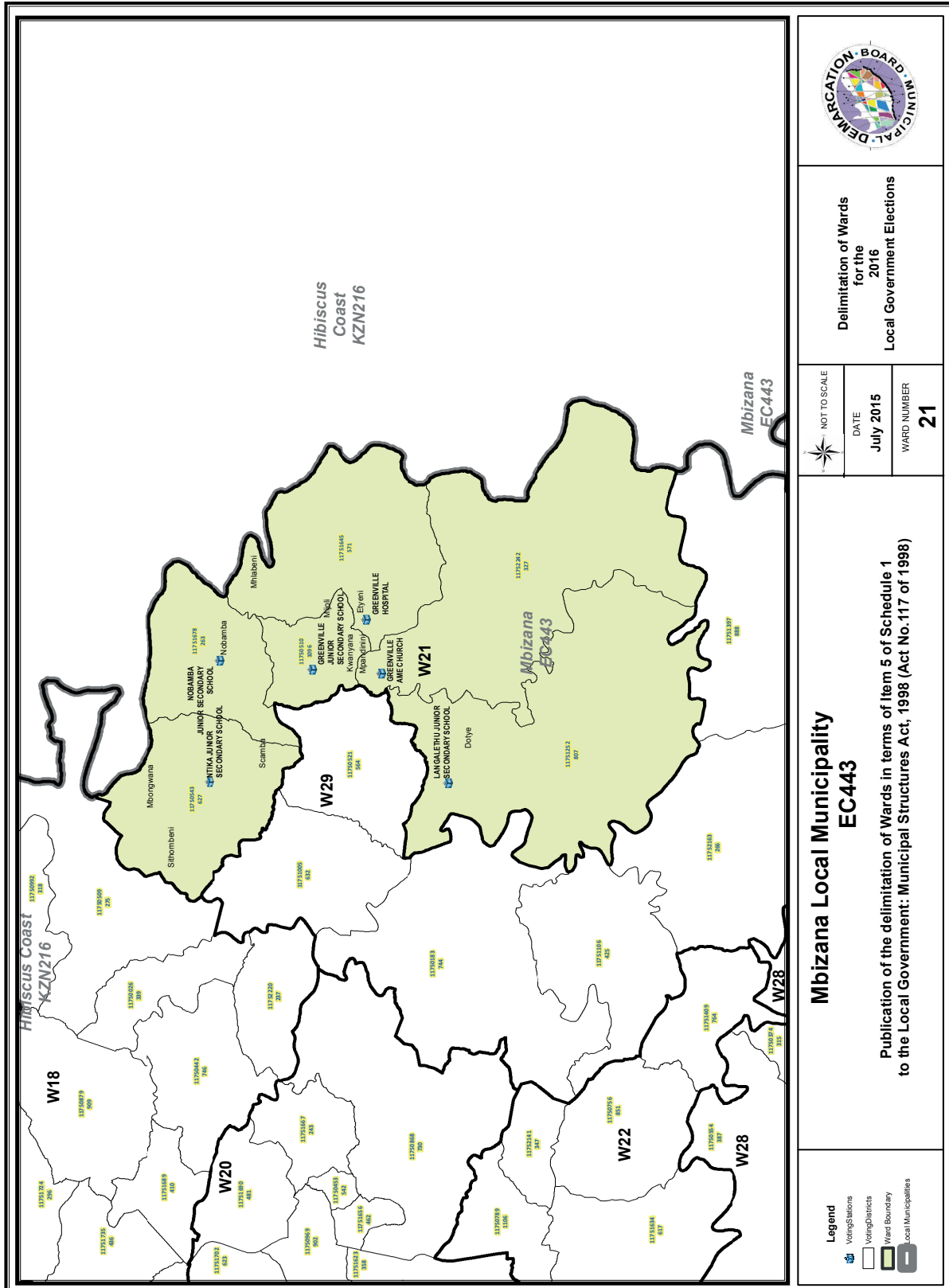


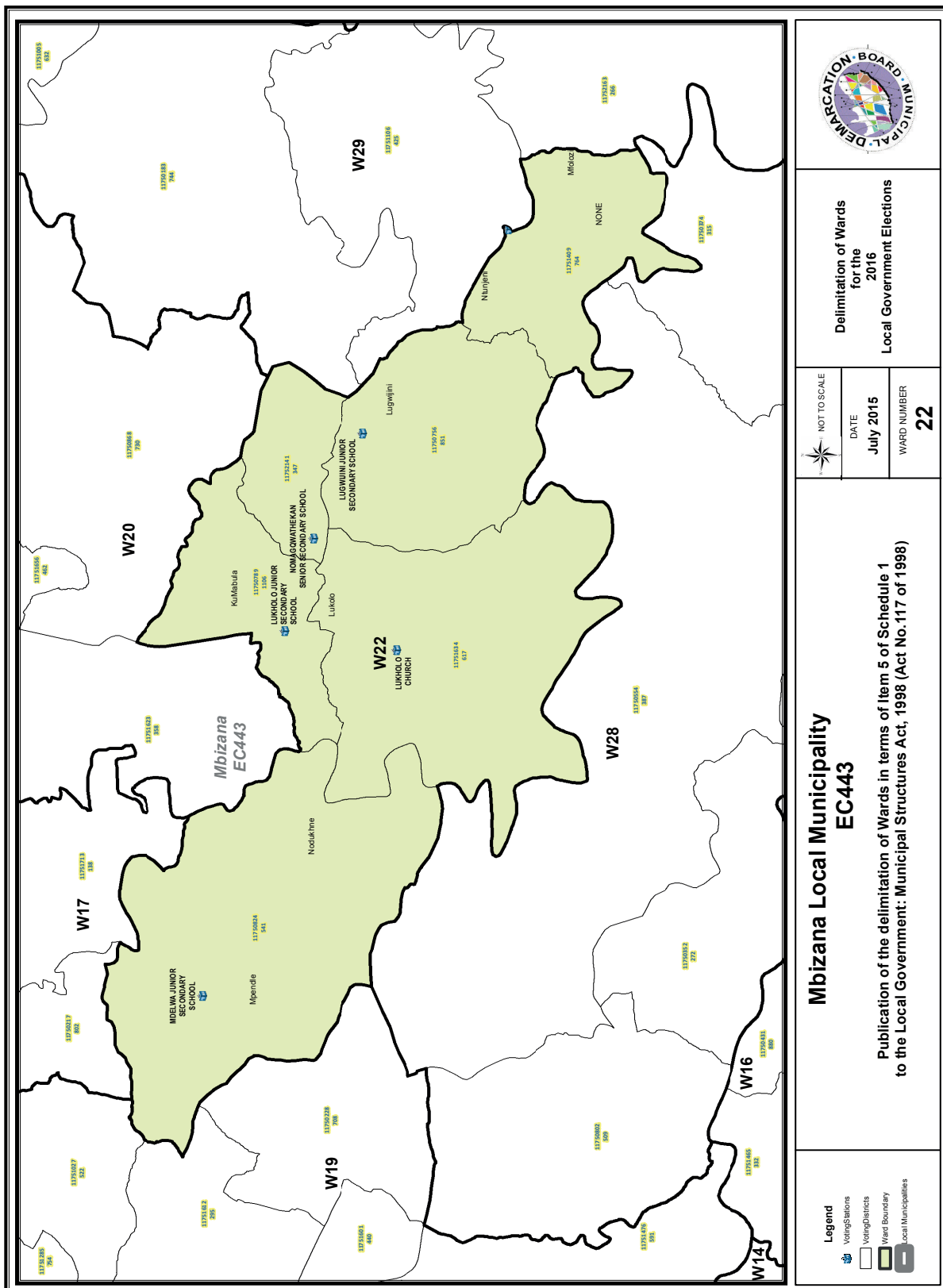


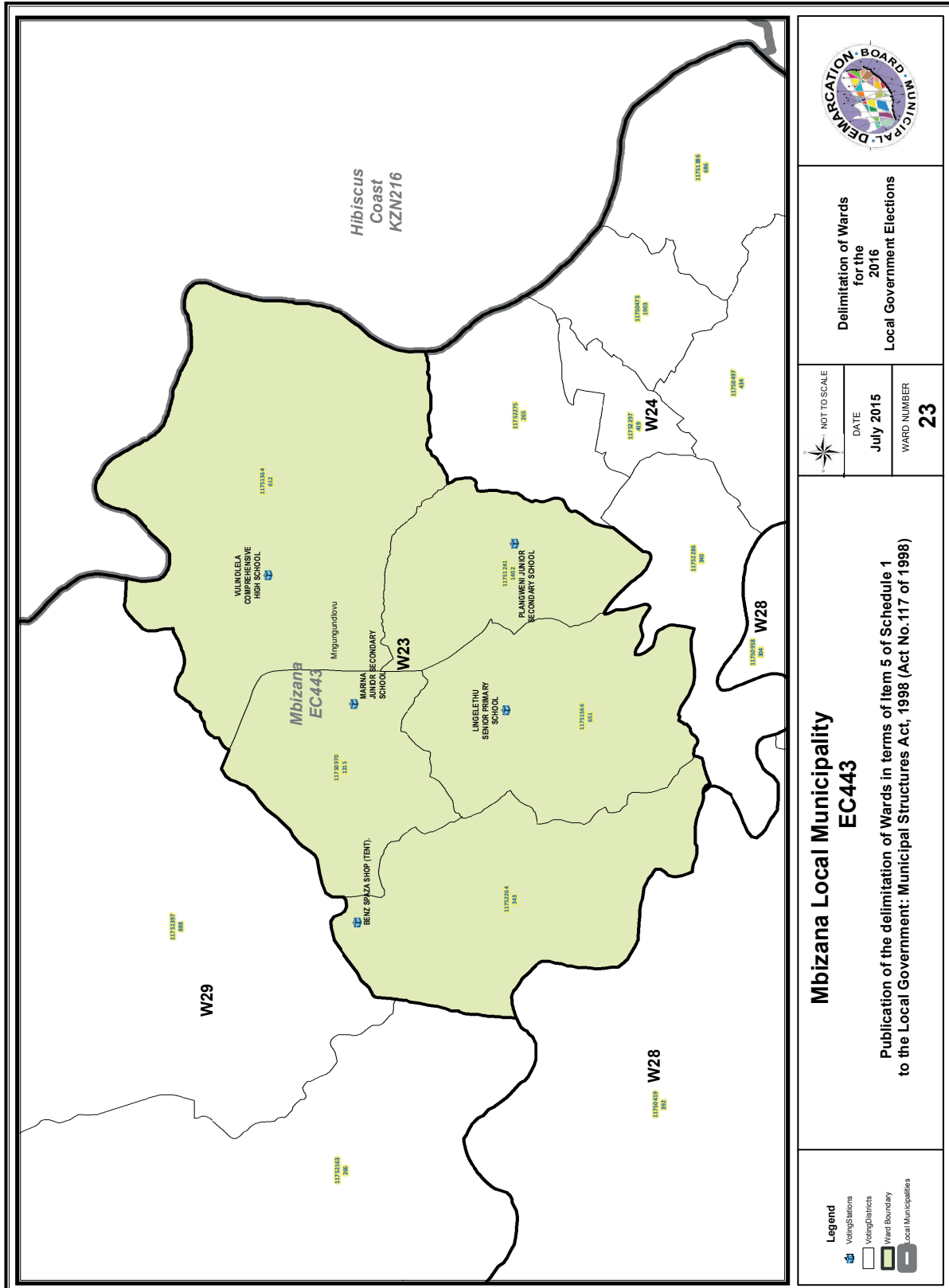


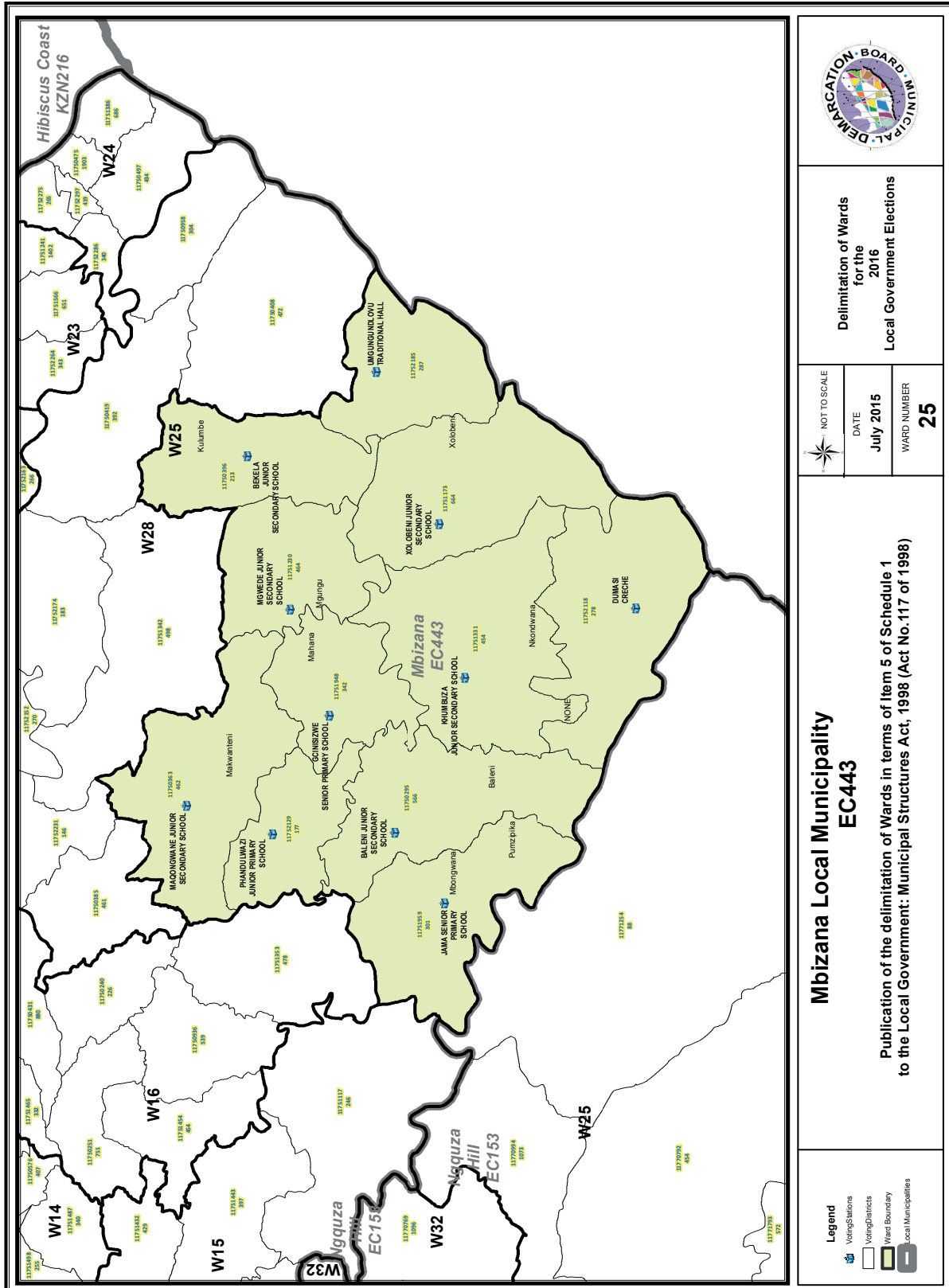












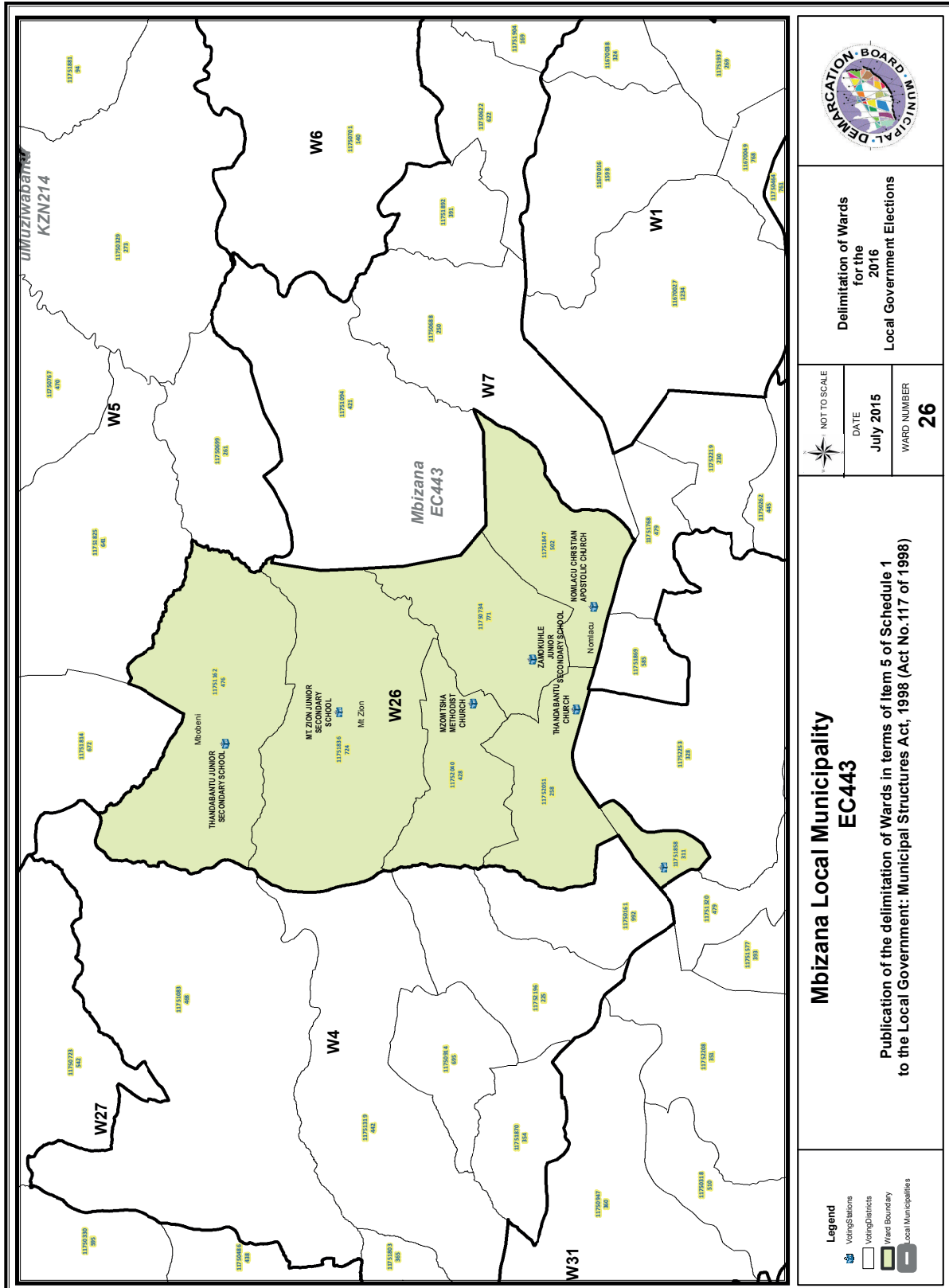
Delimitation of Wards for the 2016 Local Government Elections

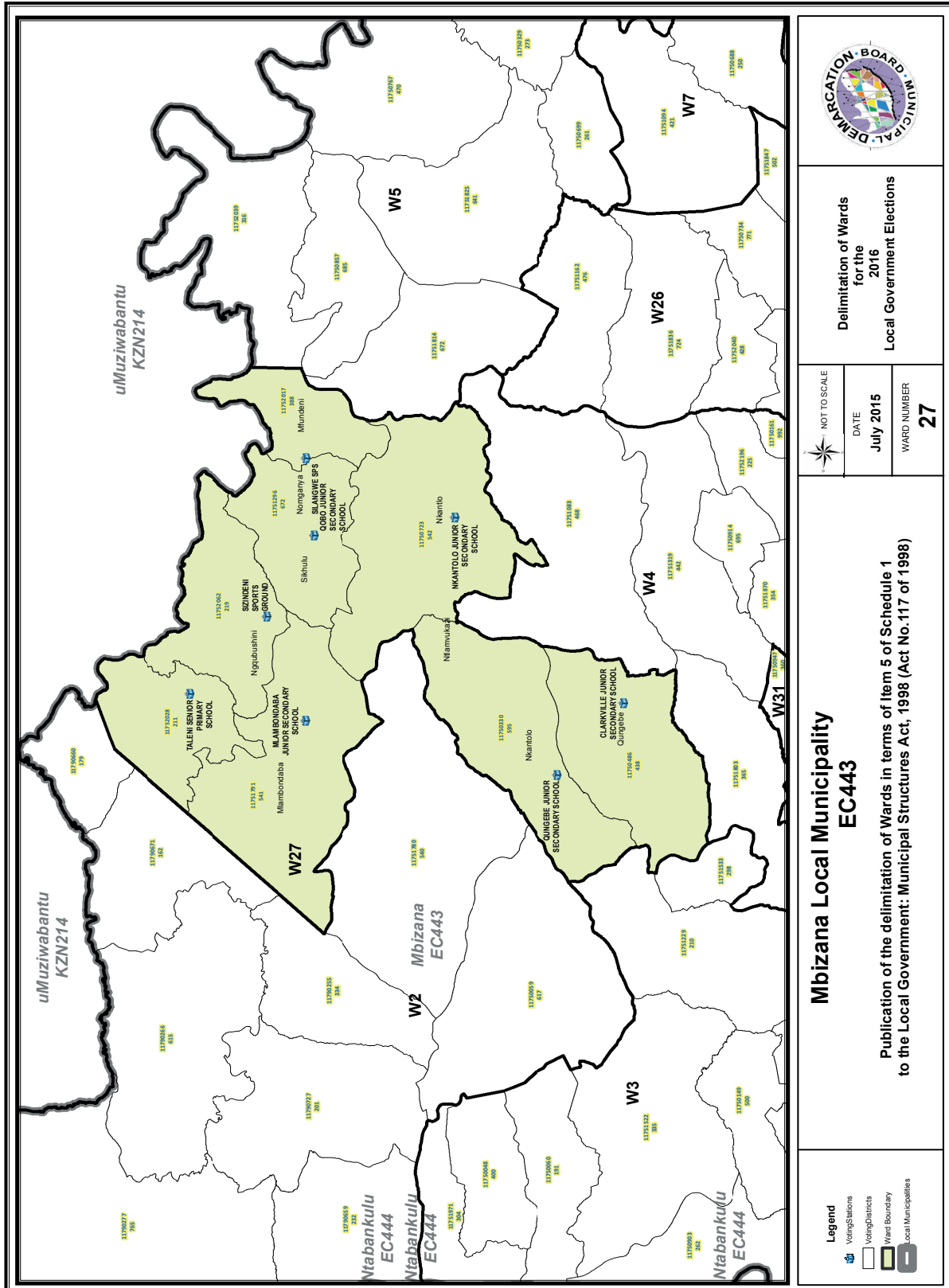
NOT TO SCALE
DATE July 2015
WARD NUMBER 25

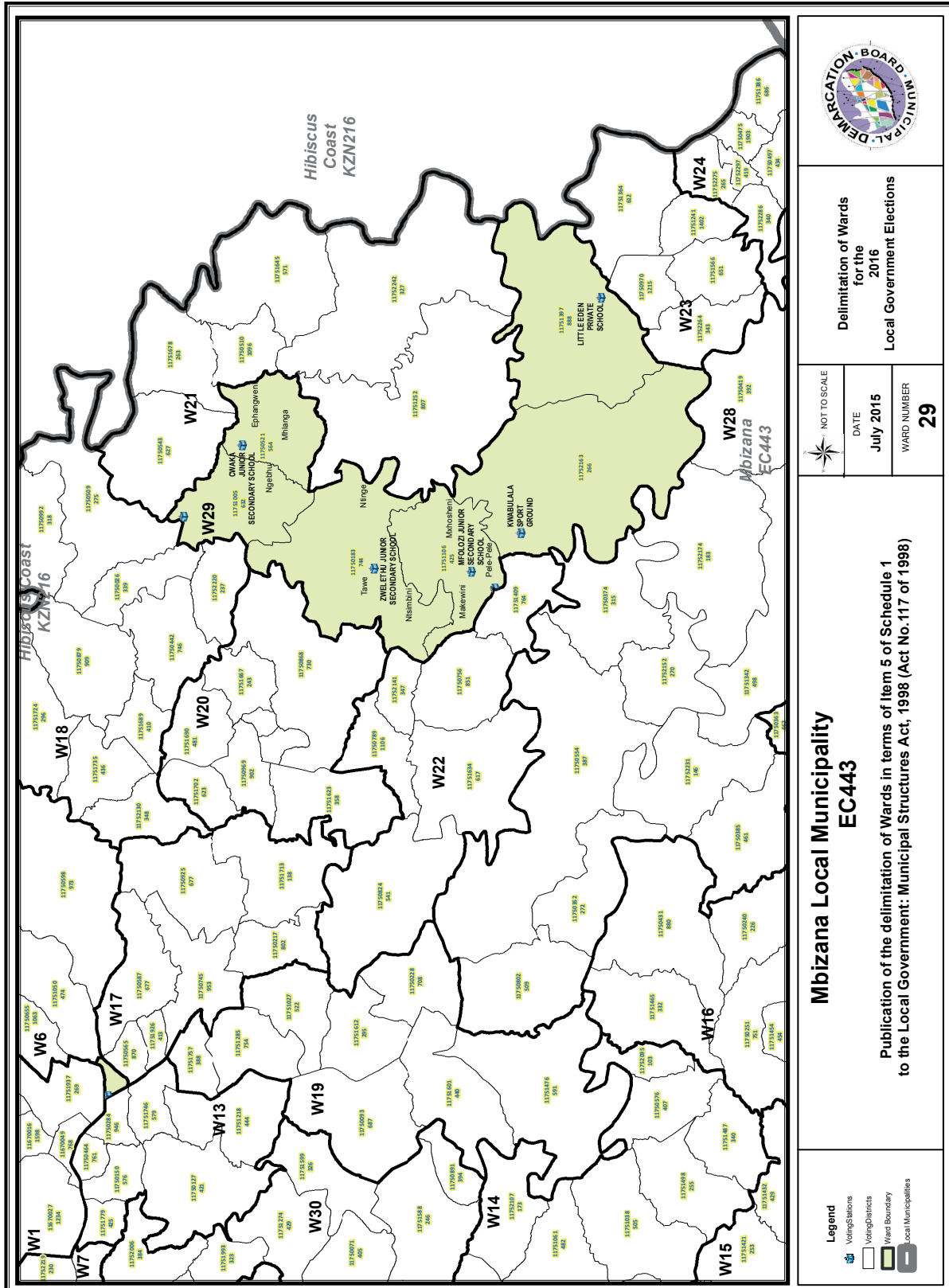
Mbizana Local Municipality EC443

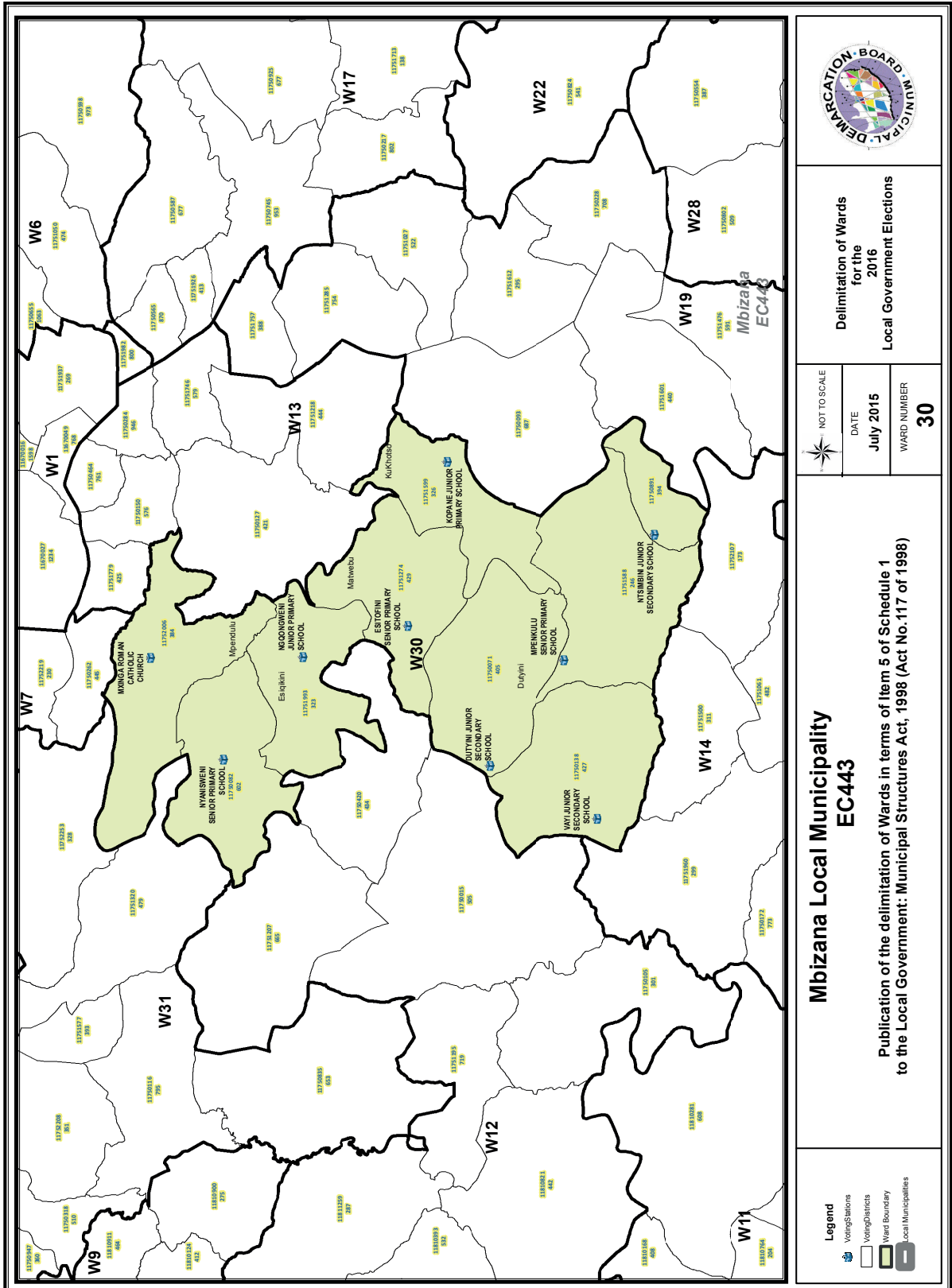
Publication of the delimitation of Wards in terms of Item 5 of Schedule 1 to the Local Government: Municipal Structures Act, 1998 (Act No.117 of 1998)

- Legend**
- Voting Stations
 - Voting Districts
 - Ward Boundary
 - Local Municipalities









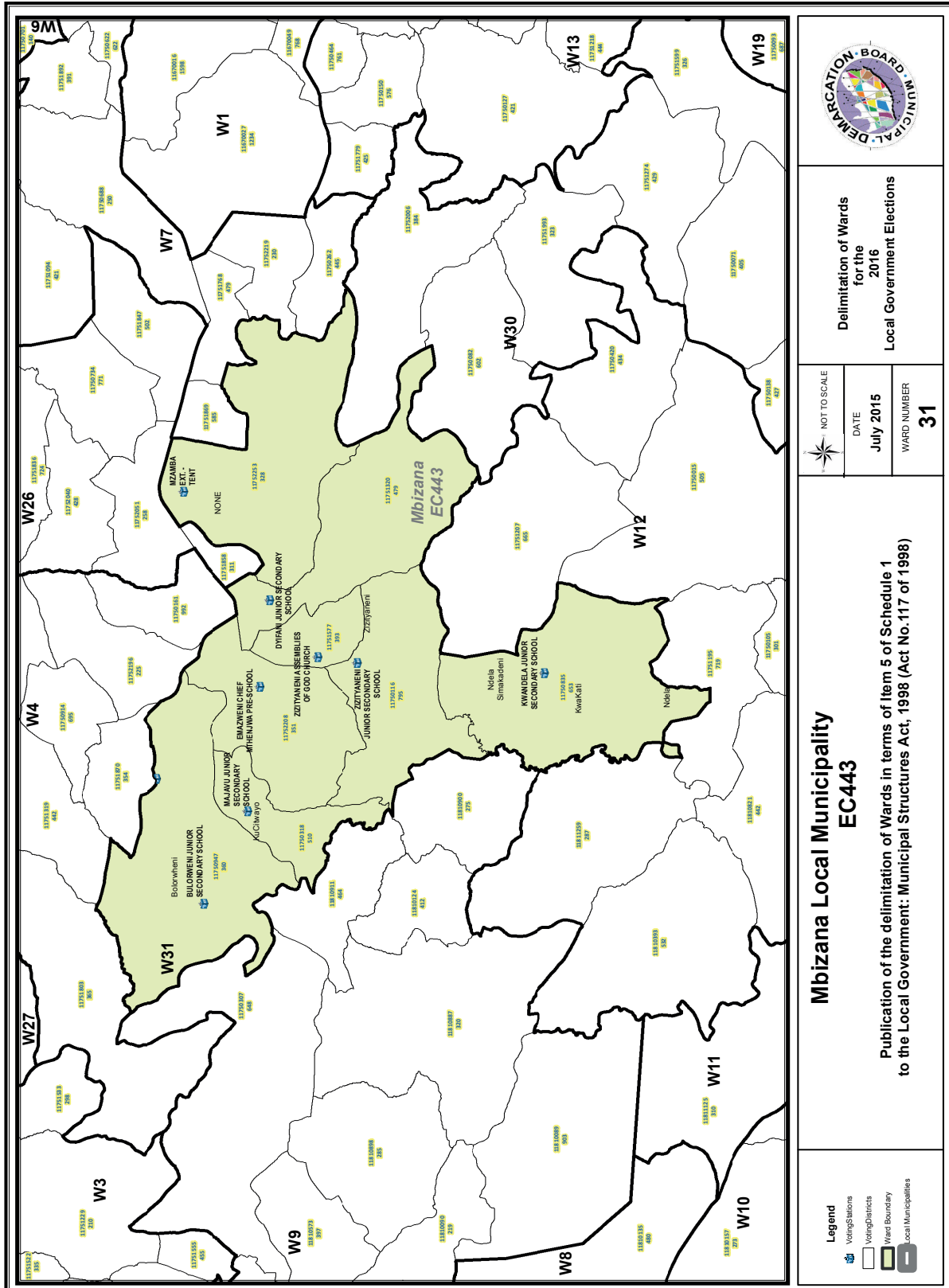
Delimitation of Wards
for the
2016
Local Government Elections

NOT TO SCALE
DATE July 2015
WARD NUMBER 30

**Mbizana Local Municipality
EC443**

Publication of the delimitation of Wards in terms of Item 5 of Schedule 1
to the Local Government: Municipal Structures Act, 1998 (Act No.117 of 1998)

- Legend**
- Voting Stations
 - Voting Districts
 - Ward Boundary
 - Local Municipality



FORM/VORM MDB5

WARD DELIMITATION/

WYKSAFBAKENING

**OBJECTION IN TERMS OF ITEM 5(2) OF SCHEDULE 1 TO THE LOCAL GOVERNMENT:
MUNICIPAL STRUCTURES ACT, 1998**

**BESWAAR INGEVOLGE ITEM 5(2) VAN BYLAE 1 VAN DIE WET OP PLAASLIKE REGERING:
MUNISIPALE STRUKTURE, 1998**

Name of municipality/ Naam van Munisipaliteit :

Code/Kode :

**Name of aggrieved person/institution/Naam van beswaarde persoon/instelling :
.....**

**Contact person in case of an institution/ Kontak persoon in geval van 'n instelling:
.....**

Address/Adres:

Tel. number/ Tel. nommer:.....Cell number/ Selfoonnommer:

Email address:

PLEASE USE ADDITIONAL PAGE SHOULD THE ALTERNATIVE PROPOSALS BE MORE THAN THE FOLLOWING SPACE AVAILABLE.

I request the Municipal Demarcation Board to consider the following alternative proposals/ Ek versoek die Munisipale Afbakeningsraad om die volgende alternatiewe voorstelle te oorweeg:

Ward number/ Wyk nommer	The ward should comprise of the following voting districts (Provide voting district number and the number of voters in brackets e.g. VD1123456(1500)+VD345678(2500)=4000)/ Die wyk moet bestaan uit die volgende stemdistrikte: (Voorsien die stemdistriknommer en die getal geregistreerde kiesers as volg VD1123456(1500)+VD345678(2500)=4000)	Motivation /Motivering

I confirm that/ Ek bevestig dat:

- each cluster of voting districts form a contiguous ward/ die saamgevoegde stemdistrikte vorm 'n aaneenlopende wyk;
- the number of voters in each ward fall within the minimum and maximum of voters allowed per ward/ die getal kiesers in elke wyk is binne die minimum en maksimum getal wat per wyk toegelaat word;
- the proposed ward boundaries comply, in general, with the criteria/ die voorgestelde wyke voldoen in die algemeen aan die kriteria.

SIGNATURE

NAME AND SURNAME

DATE

IMPORTANT

Information

from Government Printing Works

Dear Valued Customers,

Government Printing Works has implemented rules for completing and submitting the electronic Adobe Forms when you, the customer, submits your notice request.

Please take note of these guidelines when completing your form.

GPW Business Rules

1. No hand written notices will be accepted for processing, this includes Adobe forms which have been completed by hand.
2. Notices can only be submitted in Adobe electronic form format to the email submission address submit.egazette@gpw.gov.za. This means that any notice submissions not on an Adobe electronic form that are submitted to this mailbox will be **rejected**. National or Provincial gazette notices, where the Z95 or Z95Prov must be an Adobe form but the notice content (body) will be an attachment.
3. Notices brought into GPW by "walk-in" customers on electronic media can only be submitted in Adobe electronic form format. This means that any notice submissions not on an Adobe electronic form that are submitted by the customer on electronic media will be **rejected**. National or Provincial gazette notices, where the Z95 or Z95Prov must be an Adobe form but the notice content (body) will be an attachment.
4. All customers who walk in to GPW that wish to submit a notice that is not on an electronic Adobe form will be routed to the Contact Centre where the customer will be taken through the completion of the form by a GPW representative. Where a customer walks into GPW with a stack of hard copy notices delivered by a messenger on behalf of a newspaper the messenger must be referred back to the sender as the submission does not adhere to the submission rules.
5. All notice submissions that do not comply with point 2 will be charged full price for the notice submission.
6. The current cut-off of all Gazette's remains unchanged for all channels. (Refer to the GPW website for submission deadlines – www.gpwonline.co.za)
7. Incorrectly completed forms and notices submitted in the wrong format will be rejected to the customer to be corrected and resubmitted. Assistance will be available through the Contact Centre should help be required when completing the forms. (012-748 6200 or email info.egazette@gpw.gov.za)
8. All re-submissions by customers will be subject to the above cut-off times.
9. All submissions and re-submissions that miss the cut-off will be rejected to the customer to be submitted with a new publication date.
10. Information on forms will be taken as the primary source of the notice to be published. Any instructions that are on the email body or covering letter that contradicts the notice form content will be ignored.

You are therefore advised that effective from **Monday, 18 May 2015** should you not comply with our new rules of engagement, all notice requests will be rejected by our new system.

Furthermore, the fax number **012- 748 6030** will also be **discontinued** from this date and customers will only be able to submit notice requests through the email address submit.egazette@gpw.gov.za.



Printed by and obtainable from the Government Printer, Bosman Street, Private Bag X85, Pretoria, 0001.
 Contact Centre Tel: 012-748 6200. eMail: info.egazette@gpw.gov.za
 Also available at the Legal Advisory Services, **Province of the Eastern Cape**, Private Bag X0047, Bisho, 5605.
 Tel. (040) 635-0052.