



PROVINCE OF THE EASTERN CAPE  
IPHONDO LEMPUMA KOLONI  
PROVINSIE OOS-KAAP

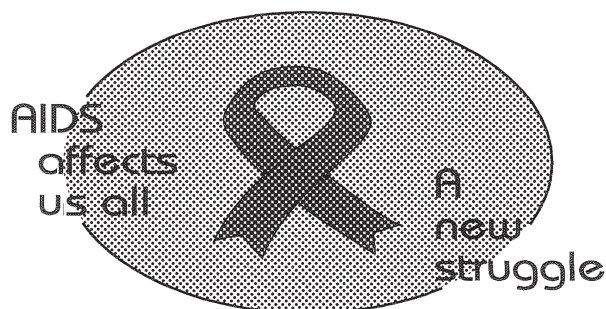
**Provincial Gazette  
Igazethi Yephondo  
Provinsiale Koerant  
(Extraordinary)**

Vol. 22

BISHO/  
KING WILLIAM'S TOWN, 22 JULY 2015

No. 3452

**We all have the power to prevent AIDS**



Prevention is the cure

**AIDS  
HELPLINE**

**0800 012 322**

DEPARTMENT OF HEALTH

*N.B. The Government Printing Works will not be held responsible for the quality of "Hard Copies" or "Electronic Files" submitted for publication purposes*

ISSN 1682-4556



9 771682 455006

03452



# IMPORTANT

## Information

### from Government Printing Works

Dear Valued Customers,

Government Printing Works has implemented rules for completing and submitting the electronic Adobe Forms when you, the customer, submits your notice request.

Please take note of these guidelines when completing your form.



#### GPW Business Rules

1. No hand written notices will be accepted for processing, this includes Adobe forms which have been completed by hand.
2. Notices can only be submitted in Adobe electronic form format to the email submission address [submit.egazette@gpw.gov.za](mailto:submit.egazette@gpw.gov.za). This means that any notice submissions not on an Adobe electronic form that are submitted to this mailbox will be **rejected**. National or Provincial gazette notices, where the Z95 or Z95Prov must be an Adobe form but the notice content (body) will be an attachment.
3. Notices brought into GPW by "walk-in" customers on electronic media can only be submitted in Adobe electronic form format. This means that any notice submissions not on an Adobe electronic form that are submitted by the customer on electronic media will be **rejected**. National or Provincial gazette notices, where the Z95 or Z95Prov must be an Adobe form but the notice content (body) will be an attachment.
4. All customers who walk in to GPW that wish to submit a notice that is not on an electronic Adobe form will be routed to the Contact Centre where the customer will be taken through the completion of the form by a GPW representative. Where a customer walks into GPW with a stack of hard copy notices delivered by a messenger on behalf of a newspaper the messenger must be referred back to the sender as the submission does not adhere to the submission rules.
5. All notice submissions that do not comply with point 2 will be charged full price for the notice submission.
6. The current cut-off of all Gazette's remains unchanged for all channels. (Refer to the GPW website for submission deadlines – [www.gpwonline.co.za](http://www.gpwonline.co.za))
7. Incorrectly completed forms and notices submitted in the wrong format will be rejected to the customer to be corrected and resubmitted. Assistance will be available through the Contact Centre should help be required when completing the forms. (012-748 6200 or email [info.egazette@gpw.gov.za](mailto:info.egazette@gpw.gov.za))
8. All re-submissions by customers will be subject to the above cut-off times.
9. All submissions and re-submissions that miss the cut-off will be rejected to the customer to be submitted with a new publication date.
10. Information on forms will be taken as the primary source of the notice to be published. Any instructions that are on the email body or covering letter that contradicts the notice form content will be ignored.

You are therefore advised that effective from **Monday, 18 May 2015** should you not comply with our new rules of engagement, all notice requests will be rejected by our new system.

Furthermore, the fax number **012- 748 6030** will also be **discontinued** from this date and customers will only be able to submit notice requests through the email address [submit.egazette@gpw.gov.za](mailto:submit.egazette@gpw.gov.za).

### DISCLAIMER:

Government Printing Works reserves the right to apply the 25% discount to all Legal and Liquor notices that comply with the business rules for notice submissions for publication in gazettes.

National, Provincial, Road Carrier Permits and Tender notices will pay the price as published in the Government Gazettes.

For any information, please contact the eGazette Contact Centre on 012-748 6200 or email [info.egazette@gpw.gov.za](mailto:info.egazette@gpw.gov.za)

### Table of Contents

<i>No.</i>		<i>Gazette No.</i>	<i>Page No.</i>
<b>PROVINCIAL NOTICES • PROVINSIALE KENNISGEWINGS</b>			
40	Local Government: Municipal Structures Act (117/1998): Municipal Demarcation Board: Delimitation of municipal wards: Umzimvubu Local Municipality (EC) .....	3452	4
40	Wet Op Plaaslike Regering: Munisipale Strukture (117/1998): Munisipale Afbakeningsraad: Afbakening van munisipale wyke: Umzimvubu Local Municipality (EC).....	3452	5

---

**PROVINCIAL NOTICES • PROVINSIALE KENNISGEWINGS**

---

**PROVINCIAL NOTICE 40 OF 2015****MUNICIPAL DEMARCATION BOARD : DELIMITATION OF  
MUNICIPAL WARDS IN TERMS OF THE LOCAL  
GOVERNMENT : MUNICIPAL STRUCTURES ACT, 1998.****Umzimvubu Local Municipality  
EC442**

In terms of Item 5 (1) of Schedule 1 to the Local Government: Municipal Structures Act, 1998 (Act No. 117 of 1998) (the Act) the Municipal Demarcation Board hereby publishes its delimitation of wards for the above-mentioned municipality. Particulars of the delimitation are listed in the Schedule.

In terms of Item 5 (2) of Schedule 1 to the Act, any person aggrieved by the delimitation may, within 14 days of publication of this notice, submit objections in writing to:

The Municipal Demarcation Board  
Private Bag X123  
Centurion  
0046

Fax: 086 5248643  
Email: wards@demarcation.org.za

The attached form MDB 5 must please be used to object. The form is also available on [www.demarcation.org.za](http://www.demarcation.org.za)

**MS JANE THUPANA  
CHAIRPERSON: MUNICIPAL DEMARCATION BOARD****SCHEDULE**

In terms of section 18(3) of the Local Government: Municipal Structures Act, 1998 (Act 117 of 1998), the MEC responsible for local government has determined that the municipal council consists of 53 councillors.

After having consulted the Independent Electoral Commission, The Municipal Demarcation Board has delimited the municipality into 27 wards in terms of Schedule 1 of the Act.

The number of registered voters in each ward does not vary by more than fifteen percent from the norm. The norm was determined by dividing the total number of voters on the municipal segment of the national common voters roll, namely 97855 voters on 5 March 2014, by the number of wards in the municipality.

An overview map of the boundary of the municipality, with the boundaries of the wards within the municipality, and a map of each ward are attached. In case of a discrepancy between the map and this schedule, the map will prevail. The ward numbers, the voting districts and voting stations in each ward, and the number of voters are as follows:

**PROVINSIALE KENNISGEWING 40 VAN 2015****MUNISIPALE AFBAKENINGSRAAD :  
AFBAKENING VAN MUNISIPALE WYKE INGEVOLGE DIE WET OP  
PLAASLIKE REGERING: MUNISIPALE STRUKTURE, 1998****Umzimvubu Local Municipality****EC442**

Ingevolge Item 5(1) van Bylae 1 van die Wet op Plaaslike Regering: Munisipale Strukture, 1998 (Wet No. 117 van 1998) ( die Wet ) publiseer die Munisipale Afbakeningsraad hiermee sy afbakening van wyke vir die bogenaamde munisipaliteit. Besonderhede van die afbakening is vervat in die Bylae.

Ingevolge item 5(2) van Bylae 1 van die Wet, kan enige persoon wat gegrief is deur 'n afbakening binne 14 dae vanaf publikasie van hierdie kennisgewing skriftelike besware voorlê aan:

Die Munisipale Afbakeningsraad  
Privaatsak X123  
Centurion  
0046

Faks: 086 5248643  
E-pos: wards@demarcation.org.za

Die aangehegte vorm MDB5 moet asseblief gebruik word om beswaar aan te teken. Die vorm is ook beskikbaar op [www.demarcation.org.za](http://www.demarcation.org.za)

**MS JANE THUPANA  
VOORSITTER : MUNISIPALE AFBAKENINGSRAAD****BYLAE**

Ingevolge artikel 18(3) van die Wet op Plaaslike Regering: Munisipale Strukture, 1998 (Wet 117 van 1998) het die LUR vir plaaslike regering bepaal dat die munisipale raad bestaan uit 53 raadslede.

Na oorlegpleging met die Onafhanklike Verkiesingskommissie het die Munisipale Afbakeningsraad die munisipaliteit in 27 wyke afgebaken ingevolge Bylae 1 van die Wet.

Die getal geregistreerde kiesers in elke wyk, wyk nie meer as vyftien persent van die norm af nie. Die norm is bepaal deur die getal geregistreerde kiesers op die munisipale segment van die nasionale gemeenskaplike kieserslys, naamlik 97855 kiesers op 5 Maart 2014, deur die getal wyke in die munisipaliteit te deel.

'n Oorsigkaart van die munisipale grens met die grense van die wyke binne die munisipale grens, en 'n kaart van elke wyk, is aangeheg. Ingeval van 'n verskil tussen 'n kaart en hierdie bylae, sal die kaart geld.

Die wyknommers, die stemdistrikte en stemlokale in elke wyk, en die getal kiesers is as volg:

**Ward 1** comprises of a total of 3756 registered voters.  
**Wyk 1** bestaan uit 'n totaal van 3756 geregisteerde kiesers.  
 MIN VOTERS/KIESER 3080 NORM 3624 MAX VOTERS/KIESER 4168

VOTING DISTRICT No. STEMDISTRIK No.	VOTING STATION NAME STEMLOKAAL NAAM	NUMBER OF VOTERS GETAL KIESERS	SPLIT VD VERDEELDE SD
11790389	PEPENI JUNIOR SECONDARY SCHOOL	867	
11790738	THEMBENI S.P.S	109	
11790749	GOVALELE NOMAKE JSS	801	
11790222	LOWER BROOKSNEK JUNIOR SECONDARY SCHOOL	1244	
11790288	UPPER BROOKS NEK JUNIOR SECONDARY SCHOOL	735	

**Ward 2** comprises of a total of 4038 registered voters.  
**Wyk 2** bestaan uit 'n totaal van 4038 geregisteerde kiesers.  
 MIN VOTERS/KIESER 3080 NORM 3624 MAX VOTERS/KIESER 4168

VOTING DISTRICT No. STEMDISTRIK No.	VOTING STATION NAME STEMLOKAAL NAAM	NUMBER OF VOTERS GETAL KIESERS	SPLIT VD VERDEELDE SD
11790132	LUBALEKO JUNIOR SECONDARY SCHOOL	892	
11790716	CELINKUNGU SENIOR PRIMARY SCHOOL	309	
11790750	SAHLULO SPS	310	
11790121	NGWEGWENI JUNIOR SECONDARY SCHOOL	771	
11790143	SIDAKENI JUNIOR SECONDARY SCHOOL	628	
11790020	NKANJI JUNIOR SECONDARY SCHOOL	522	
11790154	SIPOLWENI JUNIOR SECONDARY SCHOOL	606	

**Ward 3** comprises of a total of 3121 registered voters.  
**Wyk 3** bestaan uit 'n totaal van 3121 geregisteerde kiesers.  
 MIN VOTERS/KIESER 3080 NORM 3624 MAX VOTERS/KIESER 4168

VOTING DISTRICT No. STEMDISTRIK No.	VOTING STATION NAME STEMLOKAAL NAAM	NUMBER OF VOTERS GETAL KIESERS	SPLIT VD VERDEELDE SD
11790558	GUGWINI JUNIOR SECONDARY SCHOOL	766	
11790547	NTLAVINI JUNIOR SECONDARY SCHOOL	552	
11790019	GILLESPIE J.S.S	956	
11790334	TELA JUNIOR SECONDARY SCHOOL	847	

**Ward 4** comprises of a total of 3782 registered voters.  
**Wyk 4** bestaan uit 'n totaal van 3782 geregisteerde kiesers.  
 MIN VOTERS/KIESER 3080 NORM 3624 MAX VOTERS/KIESER 4168

VOTING DISTRICT No. STEMDISTRIK No.	VOTING STATION NAME STEMLOKAAL NAAM	NUMBER OF VOTERS GETAL KIESERS	SPLIT VD VERDEELDE SD
--	--	-----------------------------------	--------------------------

11790110	BHETSHWANA JUNIOR SECONDARY SCHOOL	1092
11790536	MNQWANE JUNIOR SECONDARY SCHOOL	559
11790569	MOMBENI JUNIOR SECONDARY SCHOOL	385
11780838	SIGAGANE JUNIOR SECONDARY SCHOOL.	347
11780636	MYENGWA SENIOR SECONDARY SCHOOL	351
11790198	SIGIDINI JUNIOR SECONDARY SCHOOL	618
11790693	MCUBANA JUNIOR SECONDARY SCHOOL.	430

**Ward 5 comprises of a total of 3538 registered voters.**  
**Wyk 5 bestaan uit 'n totaal van 3538 geregistreerde kiesers.**

MIN VOTERS/KIESER 3080

NORM 3624

MAX VOTERS/KIESER 4168

VOTING DISTRICT No. STEMDISTRIK No.	VOTING STATION NAME STEMLOKAAL NAAM	NUMBER OF VOTERS GETAL KIESERS	SPLIT VD VERDEELDE SD
11790570	MWACA JUNIOR SECONDARY SCHOOL	276	
11790581	MARHWAQA	410	
11790312	SIRHOQOBENI JUNIOR SECONDARY SCHOOL	432	
11790592	QADU JUNIOR PRIMARY SCHOOL	351	
11790109	FIKENI JUNIOR SECONDARY SCHOOL	973	
11790615	MJOLI JUNIOR SECONDARY SCHOOL	622	
11790345	MAPHELENI JUNIOR SECONDARY SCHOOL	474	

**Ward 6 comprises of a total of 3445 registered voters.**  
**Wyk 6 bestaan uit 'n totaal van 3445 geregistreerde kiesers.**

MIN VOTERS/KIESER 3080

NORM 3624

MAX VOTERS/KIESER 4168

VOTING DISTRICT No. STEMDISTRIK No.	VOTING STATION NAME STEMLOKAAL NAAM	NUMBER OF VOTERS GETAL KIESERS	SPLIT VD VERDEELDE SD
11760566	NOMKHOLOKOTHO JUNIOR SECONDARY SCHOOL	613	
11761062	MQOKWENI JUNIOR SECONDARY SCHOOL.	144	
11760791	SYLLASVILLE SENIOR PRIMARY SCHOOL	375	
11760780	NQABENI SENIOR PRIMARY SCHOOL	217	
11760623	MQHEKEZWENI JUNIOR SECONDARY SCHOOL	270	
11760386	NDARALA JUNIOR SECONDARY SCHOOL	323	
11760690	SILINDINI JUNIOR SECONDARY SCHOOL	161	
11790031	GOGELA JUNIOR SECONDARY SCHOOL	517	
11761253	NATALA NTSISWA SEC SCHOOL	160	
11790367	NDUM-NDUM JUNIOR SECONDARY SCHOOL	275	
11790176	MBUMBAZI JUNIOR SECONDARY SCHOOL	390	

**Ward 7** comprises of a total of 4058 registered voters.  
**Wyk 7** bestaan uit 'n totaal van 4058 geregisteerde kiesers.  
 MIN VOTERS/KIESER 3080 NORM 3624 MAX VOTERS/KIESER 4168

VOTING DISTRICT No. STEMDISTRIK No.	VOTING STATION NAME STEMLOKAAL NAAM	NUMBER OF VOTERS GETAL KIESERS	SPLIT VD VERDEELDE SD
11700021	LUBALASI SENIOR PRIMARY SCHOOL	416	
11700010	MOUNT AYLIF TOWN HALL	3212	
11790390	SKHEMANE JUNIOR SECONDARY SCHOOL	430	

**Ward 8** comprises of a total of 3298 registered voters.  
**Wyk 8** bestaan uit 'n totaal van 3298 geregisteerde kiesers.  
 MIN VOTERS/KIESER 3080 NORM 3624 MAX VOTERS/KIESER 4168

VOTING DISTRICT No. STEMDISTRIK No.	VOTING STATION NAME STEMLOKAAL NAAM	NUMBER OF VOTERS GETAL KIESERS	SPLIT VD VERDEELDE SD
11790053	NDAKENI JUNIOR SECONDARY SCHOOL	518	
11790086	DUTYINI JUNIOR SECONDARY SCHOOL	657	
11821137	SKHUMBENI JUNIOR SECONDARY SCHOOL.	187	
11790323	NTSIZWA JUNIOR SECONDARY SCHOOL	493	
11790097	LUGELWENI JUNIOR SECONDARY SCHOOL	896	
11790705	NYATHINI JUNIOR SECONDARY SCHOOL.	547	

**Ward 9** comprises of a total of 3541 registered voters.  
**Wyk 9** bestaan uit 'n totaal van 3541 geregisteerde kiesers.  
 MIN VOTERS/KIESER 3080 NORM 3624 MAX VOTERS/KIESER 4168

VOTING DISTRICT No. STEMDISTRIK No.	VOTING STATION NAME STEMLOKAAL NAAM	NUMBER OF VOTERS GETAL KIESERS	SPLIT VD VERDEELDE SD
11790604	MHLUZINI JUNIOR SECONDARY SCHOOL	698	
11790356	ZWELEDINGA JUNIOR SECONDARY SCHOOL	800	
11790075	MNIKWA JUNIOR SECONDARY SCHOOL	630	
11790626	LUXWESA JUNIOR SECONDARY SCHOOL	910	
11790648	SAPUKANDUKU SENIOR SECONDARY SCHOOL	503	

**Ward 10** comprises of a total of 3171 registered voters.  
**Wyk 10** bestaan uit 'n totaal van 3171 geregisteerde kiesers.  
 MIN VOTERS/KIESER 3080 NORM 3624 MAX VOTERS/KIESER 4168

VOTING DISTRICT No. STEMDISTRIK No.	VOTING STATION NAME STEMLOKAAL NAAM	NUMBER OF VOTERS GETAL KIESERS	SPLIT VD VERDEELDE SD
11760667	MPAMBA JUNIOR SECONDARY SCHOOL	426	
11760656	MTSILA JUNIOR SECONDARY SCHOOL	357	



11761220	TEMBENI JUNIOR SECONDARY SCHOOL	191
11760904	NCINIBA JUNIOR SECONDARY SCHOOL	230
11760230	DINGEZWENI JUNIOR SECONDARY SCHOOL	283
11760892	MDAKENI JUNIOR SECONDARY SCHOOL	400
11761141	SIFOLWENI JUNIOR SECONDARY SCHOOL	170
11760375	COLANA MISSION	519
11760083	LOWER MVENYANE JUNIOR SECONDARY SCHOOL	595

**Ward 11 comprises of a total of 3863 registered voters.**

**Wyk 11 bestaan uit 'n totaal van 3863 geregistreerde kiesers.**

MIN VOTERS/KIESER 3080

NORM 3624

MAX VOTERS/KIESER 4168

VOTING DISTRICT No. STEMDISTRIK No.	VOTING STATION NAME STEMLOKAAL NAAM	NUMBER OF VOTERS GETAL KIESERS	SPLIT VD VERDEELDE SD
11790637	NYOSINI JUNIOR SECONDARY SCHOOL	419	
11760229	ZAKHELE J.S.S	434	
11760342	MHLOTSHENI JSS	452	
11761095	QHANQO JUNIOR SECODARY SCHOOL	400	
11761073	SITHINTENI JUNIOR SECONDARY SCHOOL.	146	
11760487	MZINTO JUNIOR SECONDARY SCHOOL	513	
11790064	RODE SENIOR SECONDARY SCHOOL	1292	
11760814	LUTSHIKINI J.S.S	207	

**Ward 12 comprises of a total of 3355 registered voters.**

**Wyk 12 bestaan uit 'n totaal van 3355 geregistreerde kiesers.**

MIN VOTERS/KIESER 3080

NORM 3624

MAX VOTERS/KIESER 4168

VOTING DISTRICT No. STEMDISTRIK No.	VOTING STATION NAME STEMLOKAAL NAAM	NUMBER OF VOTERS GETAL KIESERS	SPLIT VD VERDEELDE SD
11761107	NGUSE JUNIOR SECONDARY SCHOOL	279	
11760577	MANQILWENI JUNIOR SECONDARY SCHOOL	106	
11760948	LOWER MKHEMANE J.S.S	354	
11760140	ETYENI JUNIOR SECONDARY SCHOOL	584	
11760869	NTIBANE JUNIOR SECONDARY SCHOOL	260	
11760555	LUTATENI JUNIOR SECONDARY SCHOOL	715	
11760038	MGUNGUNDLOVU JUNIOR SECONDARY SCHOOL	459	
11760353	MPOZA GREAT PLACE	598	

**Ward 13 comprises of a total of 3447 registered voters.**  
**Wyk 13 bestaan uit 'n totaal van 3447 geregistreerde kiesers.**  
 MIN VOTERS/KIESER 3080 NORM 3624 MAX VOTERS/KIESER 4168

VOTING DISTRICT No. STEMDISTRIK No.	VOTING STATION NAME STEMLOKAAL NAAM	NUMBER OF VOTERS GETAL KIESERS	SPLIT VD VERDEELDE SD
11760926	LOWER MT HOREB JUNIOR SECONDARY SCHOOL	321	
11760599	TSEWU S.P.S	447	
11760601	NYOSINI JUNIOR SECONDARY SCHOOL	238	
11760443	SIHLAHLANI JUNIOR SECONDARY SCHOOL	370	
11761286	SIDIKIDINI CHURCH HALL	135	
11760847	NGCOZANA SENIOR PRIMARY SCHOOL	165	
11760937	MPUNGUTYANE JUNIOR SECONDARY SCHOOL	422	
11760094	NKUNGWINI JUNIOR SECONDARY SCHOOL	440	
11760432	MT WHITE JUNIOR SECONDARY SCHOOL	502	
11761275	BETHANY J.S.S	74	
11760858	MGODI JUNIOR SECONDARY SCHOOL	333	

**Ward 14 comprises of a total of 3923 registered voters.**  
**Wyk 14 bestaan uit 'n totaal van 3923 geregistreerde kiesers.**  
 MIN VOTERS/KIESER 3080 NORM 3624 MAX VOTERS/KIESER 4168

VOTING DISTRICT No. STEMDISTRIK No.	VOTING STATION NAME STEMLOKAAL NAAM	NUMBER OF VOTERS GETAL KIESERS	SPLIT VD VERDEELDE SD
11760072	ANTIOK JUNIOR SECONDARY SCHOOL	453	
11760117	MT HOREB JUNIOR SECONDARY SCHOOL	305	
11760757	MNDINI JUNIOR SECONDARY SCHOOL	607	
11761028	BETHEL JUNIOR SECONDARY SCHOOL	216	
11761039	NIYONA JUNIOR SECONDARY SCHOOL	661	
11761040	SAHLULO JUNIOR SECONDARY SCHOOL	370	
11760061	HUKU SENIOR SECONDARY SCHOOL	649	
11760106	NGWETSHENI JUNIOR SECONDARY/UPPER MANDILE	662	

**Ward 15 comprises of a total of 3352 registered voters.**  
**Wyk 15 bestaan uit 'n totaal van 3352 geregistreerde kiesers.**  
 MIN VOTERS/KIESER 3080 NORM 3624 MAX VOTERS/KIESER 4168

VOTING DISTRICT No. STEMDISTRIK No.	VOTING STATION NAME STEMLOKAAL NAAM	NUMBER OF VOTERS GETAL KIESERS	SPLIT VD VERDEELDE SD
11761006	MNGCISANE JUNIOR SECONDARY SCHOOL	601	

11761129	ZWELITSHA JUNIOR SECONDARY SCHOOL.	267
11760364	MBONDA JUNIOR SECONDARY SCHOOL	799
11761174	ELUKHANYISWENI SENIOR PRIMARY SCHOOL	252
11761084	MALONGWE JUNIOR SECONDARY SCHOOL.	293
11761163	THWA JUNIOR SECONDARY SCHOOL	83
11760151	MGANU JUNIOR SECONDARY SCHOOL	489
11760779	GUBUZI JUNIOR SECONDARY SCHOOL	118
11760476	BETHLEHEM JUNIOR SECONDARY SCHOOL	450

**Ward 16 comprises of a total of 3638 registered voters.**  
**Wyk 16 bestaan uit 'n totaal van 3638 geregistreerde kiesers.**  
 MIN VOTERS/KIESER 3080 NORM 3624 MAX VOTERS/KIESER 4168

VOTING DISTRICT No. STEMDISTRIK No.	VOTING STATION NAME STEMLOKAAL NAAM	NUMBER OF VOTERS GETAL KIESERS	SPLIT VD VERDEELDE SD
11720012	SILVERCITY CHURCH HALL	1320	
11720067	EXTENSION 7 HALL	384	
11720034	SOPHIA TOWNSHIP	112	
11761152	ELLIOT-NDABANKULU-MAKAULA JUNIOR SECONDARY	850	
11760634	NKULISA HIGHER PRIMARY SCHOOL	972	

**Ward 17 comprises of a total of 3320 registered voters.**  
**Wyk 17 bestaan uit 'n totaal van 3320 geregistreerde kiesers.**  
 MIN VOTERS/KIESER 3080 NORM 3624 MAX VOTERS/KIESER 4168

VOTING DISTRICT No. STEMDISTRIK No.	VOTING STATION NAME STEMLOKAAL NAAM	NUMBER OF VOTERS GETAL KIESERS	SPLIT VD VERDEELDE SD
11760511	HLANE JUNIOR SECONDARY SCHOOL	247	
11760241	SIMEKWENI J.S.S	527	
11760263	ST GEORGES JUNIOR SECONDARY SCHOOL	1547	
11760252	CWALINKUNGU JUNIOR SECONDARY SCHOOL	708	
11760498	SOBEDE JUNIOR SECONDARY SCHOOL	291	

**Ward 18 comprises of a total of 3938 registered voters.**  
**Wyk 18 bestaan uit 'n totaal van 3938 geregistreerde kiesers.**  
 MIN VOTERS/KIESER 3080 NORM 3624 MAX VOTERS/KIESER 4168

VOTING DISTRICT No. STEMDISTRIK No.	VOTING STATION NAME STEMLOKAAL NAAM	NUMBER OF VOTERS GETAL KIESERS	SPLIT VD VERDEELDE SD
11720056	METHODIST CHURCH HALL	726	
11720045	MT FRERE TECHNICAL COLLEGE	1019	

11720023	MAGISTRATE OFFICES	1818
11760870	LITHA	375

**Ward 19** comprises of a total of 3587 registered voters.  
**Wyk 19** bestaan uit 'n totaal van 3587 geregistreerde kiesers.

MIN VOTERS/KIESER 3080 NORM 3624 MAX VOTERS/KIESER 4168

VOTING DISTRICT No. STEMDISTRIK No.	VOTING STATION NAME STEMLOKAAL NAAM	NUMBER OF VOTERS GETAL KIESERS	SPLIT VD VERDEELDE SD
11760207	SEMENI JUNIOR SECONDARY SCHOOL	892	
11760724	MNTWANA JUNIOR SECONDARY SCHOOL	1028	
11760274	QUMRA JUNIOR SECONDARY SCHOOL	343	
11760971	UPPER DUNGU JUNIOR SECONDARY SCHOOL	741	
11760320	MTSHAZI JUNIOR SECONDARY SCHOOL	583	

**Ward 20** comprises of a total of 3778 registered voters.  
**Wyk 20** bestaan uit 'n totaal van 3778 geregistreerde kiesers.

MIN VOTERS/KIESER 3080 NORM 3624 MAX VOTERS/KIESER 4168

VOTING DISTRICT No. STEMDISTRIK No.	VOTING STATION NAME STEMLOKAAL NAAM	NUMBER OF VOTERS GETAL KIESERS	SPLIT VD VERDEELDE SD
11760285	NGWEKAZI HIGH SCHOOL	813	
11760735	CABANE JUNIOR SECONDARY SCHOOL	274	
11760960	MKHILWA JUNIOR SECONDARY SCHOOL	252	
11760319	MPEMBA JSS	172	
11760533	LWANDLANA JUNIOR SECONDARY SCHOOL	290	
11760645	MAJUBA JUNIOR SECONDARY SCHOOL	221	
11760702	NCAPAI JUNIOR SECONDARY SCHOOL	1150	
11760959	LUCINGWENI JUNIOR SECONDARY SCHOOL	156	
11760689	MAHAMANE JUNIOR SECONDARY SCHOOL	450	

**Ward 21** comprises of a total of 3950 registered voters.  
**Wyk 21** bestaan uit 'n totaal van 3950 geregistreerde kiesers.

MIN VOTERS/KIESER 3080 NORM 3624 MAX VOTERS/KIESER 4168

VOTING DISTRICT No. STEMDISTRIK No.	VOTING STATION NAME STEMLOKAAL NAAM	NUMBER OF VOTERS GETAL KIESERS	SPLIT VD VERDEELDE SD
11760195	QOQA JUNIOR SECONDARY SCHOOL	669	
11761118	NTUTA JUNIOR SECONDARY SCHOOL.	250	
11761017	MPINDWENI	257	
11760296	TOLENI JUNIOR SECONDARY SCHOOL	507	

11760016	QAIZANA JUNIOR SECONDARY SCHOOL	654
11760713	ESSECK JUNIOR SECONDARY SCHOOL	359
11760218	MVUZI JUNIOR SECONDARY SCHOOL	476
11761231	MVUMVU CHURCH HALL	365
11760308	DANGWANA JUNIOR SECONDARY SCHOOL	413

**Ward 22 comprises of a total of 3434 registered voters.**  
**Wyk 22 bestaan uit 'n totaal van 3434 geregistreerde kiesers.**  
**MIN VOTERS/KIESER 3080 NORM 3624 MAX VOTERS/KIESER 4168**

VOTING DISTRICT No. STEMDISTRIK No.	VOTING STATION NAME STEMLOKAAL NAAM	NUMBER OF VOTERS GETAL KIESERS	SPLIT VD VERDEELDE SD
11760162	UPPER BUFALLO JUNIOR SECONDARY SCHOOL	782	
11761219	KUYASA JUNIOR SECONDARY SCHOOL	401	
11760173	SODLADLA JUNIOR SECONDARY SCHOOL	382	
11760465	MABOBO JUNIOR SECONDARY SCHOOL	486	
11760454	NJIJINI JUNIOR SECONDARY SCHOOL	771	
11760184	LUSIZINI JUNIOR SECONDARY SCHOOL	612	

**Ward 23 comprises of a total of 3864 registered voters.**  
**Wyk 23 bestaan uit 'n totaal van 3864 geregistreerde kiesers.**  
**MIN VOTERS/KIESER 3080 NORM 3624 MAX VOTERS/KIESER 4168**

VOTING DISTRICT No. STEMDISTRIK No.	VOTING STATION NAME STEMLOKAAL NAAM	NUMBER OF VOTERS GETAL KIESERS	SPLIT VD VERDEELDE SD
11760612	MAGXENI JUNIOR SECONDARY SCHOOL	588	
11800145	GXAKU JUNIOR SECONDARY SCHOOL	295	
11760421	GCINISIZWE JUNIOR SECONDARY SCHOOL	362	
11761130	QUKANCA JUNIOR SECONDARY SCHOOL.	343	
11760139	CHANCELE JUNIOR SECONDARY SCHOOL	455	
11800651	MVUZI JUNIOR SECONDARY SCHOOL	201	
11760128	PONDOMISE RIDGE JUNIOR SECONDARY SCHOOL	621	
11760050	QWIDLANA JUNIOR SECONDARY SCHOOL	427	
11761196	MLENZE JUNIOR SECONDARY SCHOOL	135	
11801034	GEBANE JUNIOR PRIMARY SCHOOL	89	
11761208	DLABANENI CHURCH	219	
11760678	MATYAMHLOPHE JUNIOR SECONDARY SCHOOL	129	

<b>Ward 24</b>	<b>comprises of a total of 3841</b>	<b>registered voters.</b>
<b>Wyk 24</b>	<b>bestaan uit 'n totaal van 3841</b>	<b>geregistreerde kiesers.</b>
MIN VOTERS/KIESER	3080	NORM 3624
		MAX VOTERS/KIESER 4168

VOTING DISTRICT No. STEMDISTRIK No.	VOTING STATION NAME STEMLOKAAL NAAM	NUMBER OF VOTERS GETAL KIESERS	SPLIT VD VERDEELDE SD
11760049	EMAXHEGWENI JUNIOR SECONDARY SCHOOL	411	
11760588	EZIGADINI JUNIOR SECONDARY SCHOOL	405	
11760027	ST MARKS JUNIOR SECONDARY SCHOOL	897	
11760836	TSHISANE JUNIOR SECONDARY SCHOOL	225	
11760397	UPPER MNYAMANE JUNIOR SECONDARY SCHOOL	474	
11761242	LOWER MNYAMANA JUNIOR SECONDARY SCHOOL	301	
11760409	NCOME JUNIOR SECONDARY SCHOOL	612	
11760410	ST METHUEWS JUNIOR SECONDARY SCHOOL	296	
11760881	CHWEBENI JUNIOR SECONDARY SCHOOL.	220	

<b>Ward 25</b>	<b>comprises of a total of 3852</b>	<b>registered voters.</b>
<b>Wyk 25</b>	<b>bestaan uit 'n totaal van 3852</b>	<b>geregistreerde kiesers.</b>
MIN VOTERS/KIESER	3080	NORM 3624
		MAX VOTERS/KIESER 4168

VOTING DISTRICT No. STEMDISTRIK No.	VOTING STATION NAME STEMLOKAAL NAAM	NUMBER OF VOTERS GETAL KIESERS	SPLIT VD VERDEELDE SD
11820978	ZWELIDUMILE SENIOR PRIMARY SCHOOL	371	
11820204	GALILEE JUNIOR SECONDARY SCHOOL	951	
11820259	MKHONKQO JUNIOR SECONDARY SCHOOL	699	
11820888	MPOLOSA SENIOR PRIMARY SCHOOL	132	
11820619	MNXEKAZI JUNIOR SECONDARY SCHOOL	537	
11760522	OSBORN MISSION	608	
11820989	BATSHANA SENIOR PRIMARY SCHOOL	127	
11761264	BATHATHE S.P.S	427	

<b>Ward 26</b>	<b>comprises of a total of 3767</b>	<b>registered voters.</b>
<b>Wyk 26</b>	<b>bestaan uit 'n totaal van 3767</b>	<b>geregistreerde kiesers.</b>
MIN VOTERS/KIESER	3080	NORM 3624
		MAX VOTERS/KIESER 4168

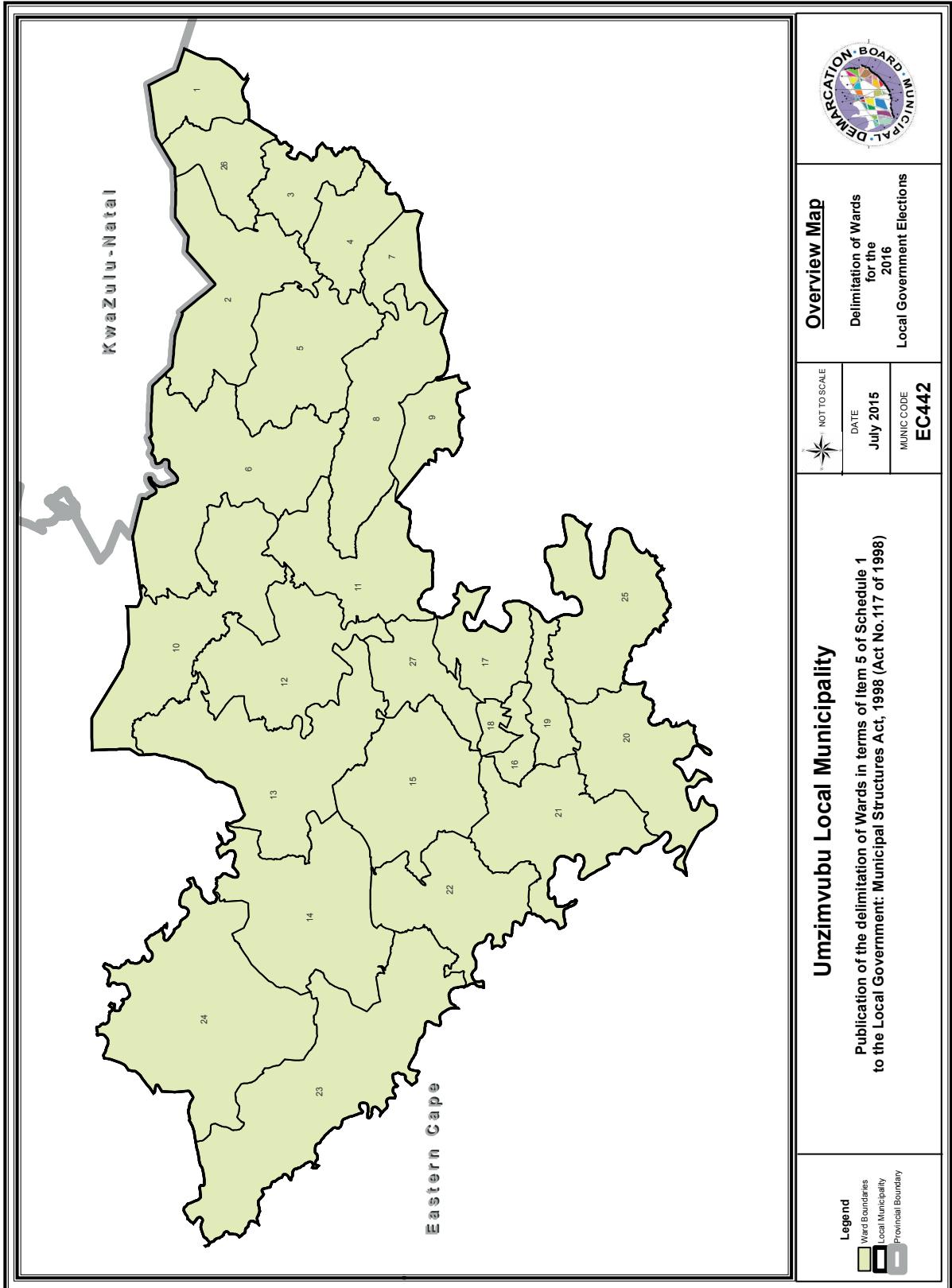
VOTING DISTRICT No. STEMDISTRIK No.	VOTING STATION NAME STEMLOKAAL NAAM	NUMBER OF VOTERS GETAL KIESERS	SPLIT VD VERDEELDE SD
11790301	UPPER CABAZANA JUNIOR SECONDARY SCHOOL	595	
11790525	TEMBISA JUNIOR SECONDARY SCHOOL	528	
11790187	MVALWENI JUNIOR SECONDARY SCHOOL	1246	

11760993	GOBA JUNIOR SECONDARY SCHOOL	565
11790042	LOWER CABAZANA JUNIOR SECONDARY SCHOOL	833

**Ward 27** comprises of a total of 3198 registered voters.  
**Wyk 27** bestaan uit 'n totaal van 3198 geregistreerde kiesers.

MIN VOTERS/KIESER 3080 NORM 3624 MAX VOTERS/KIESER 4168

VOTING DISTRICT No. STEMDISTRIK No.	VOTING STATION NAME STEMLOKAAL NAAM	NUMBER OF VOTERS GETAL KIESERS	SPLIT VD VERDEELDE SD
11760825	SIBHOZWENI JUNIOR SECONDARY SCHOOL	192	
11760803	UMZIMVUBU J.S.S	245	
11760331	CABAZI JUNIOR SECONDARY SCHOOL	567	
11761185	SIQHINGENI JUNIOR SECONDARY SCHOOL	321	
11761297	MPENDLA J.S.S	273	
11760500	MBODLENI JUNIOR SECONDARY SCHOOL	876	
11760982	MTSANA CHURCH HALL	724	



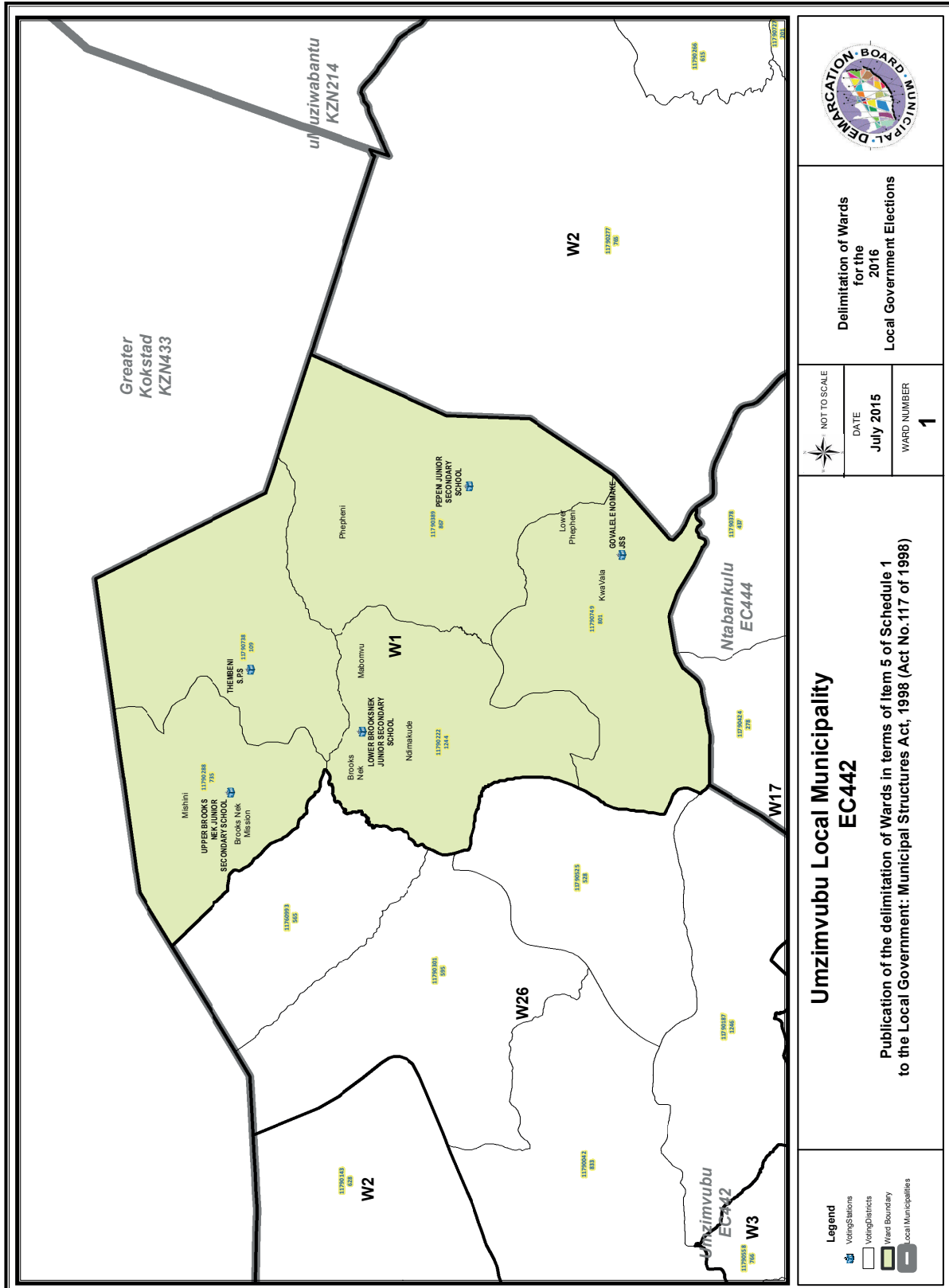
**Overview Map**  
 Delimitation of Wards  
 for the  
 2016  
 Local Government Elections

NOT TO SCALE  
 DATE  
 July 2015  
 MUNIC CODE  
**EC442**

**Umzimvubu Local Municipality**  
 Publication of the delimitation of Wards in terms of Item 5 of Schedule 1  
 to the Local Government: Municipal Structures Act, 1998 (Act No. 117 of 1998)

**Legend**  
 Ward Boundaries  
 Local Municipality  
 Provincial Boundary





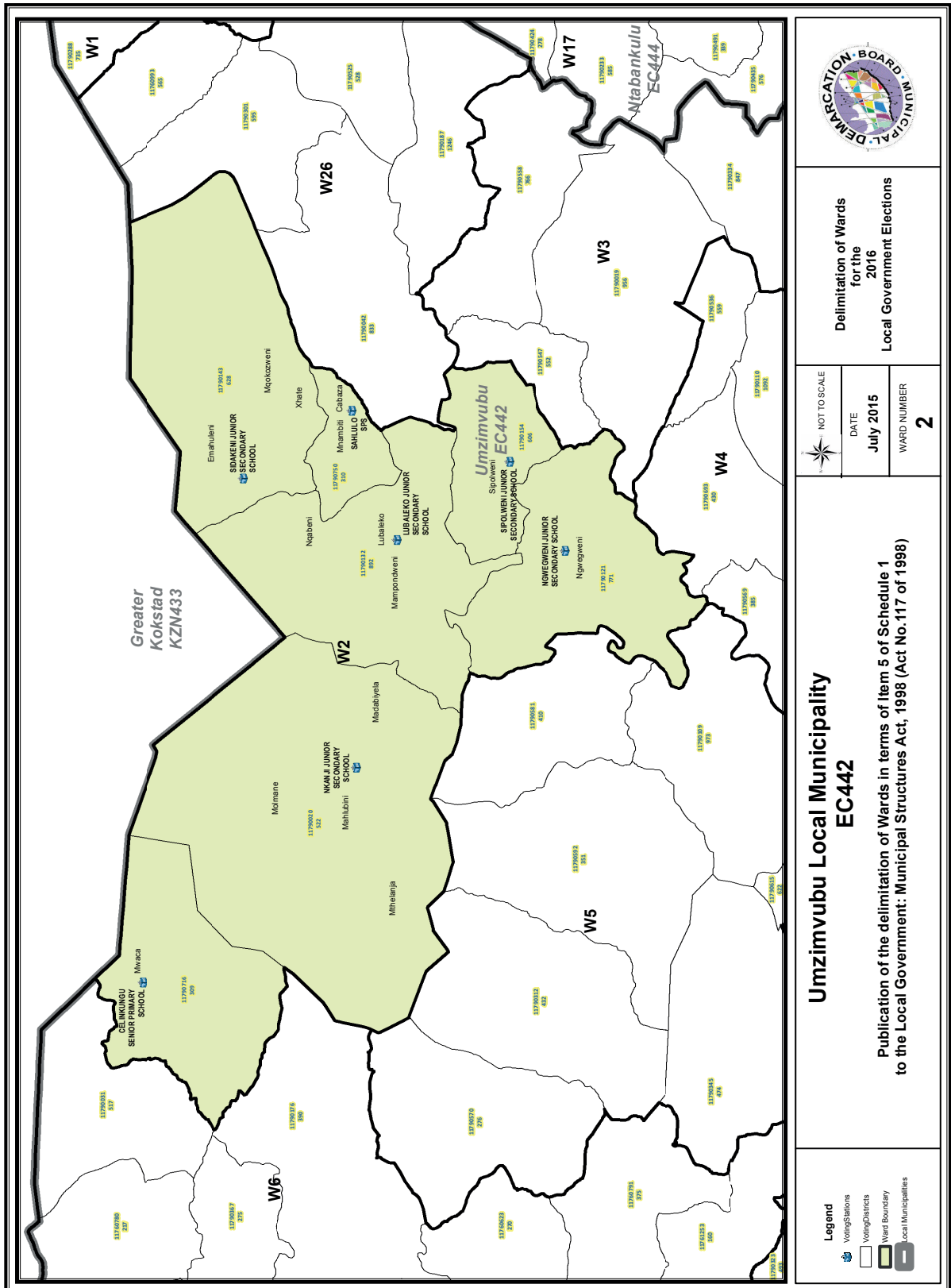
**Delimitation of Wards for the 2016 Local Government Elections**

NOT TO SCALE
DATE <b>July 2015</b>
WARD NUMBER <b>1</b>

**Umzimvubu Local Municipality EC442**

Publication of the delimitation of Wards in terms of Item 5 of Schedule 1 to the Local Government: Municipal Structures Act, 1998 (Act No.117 of 1998)

- Legend**
- Voting Stations
  - Voting Districts
  - Ward Boundary
  - Local Municipalities



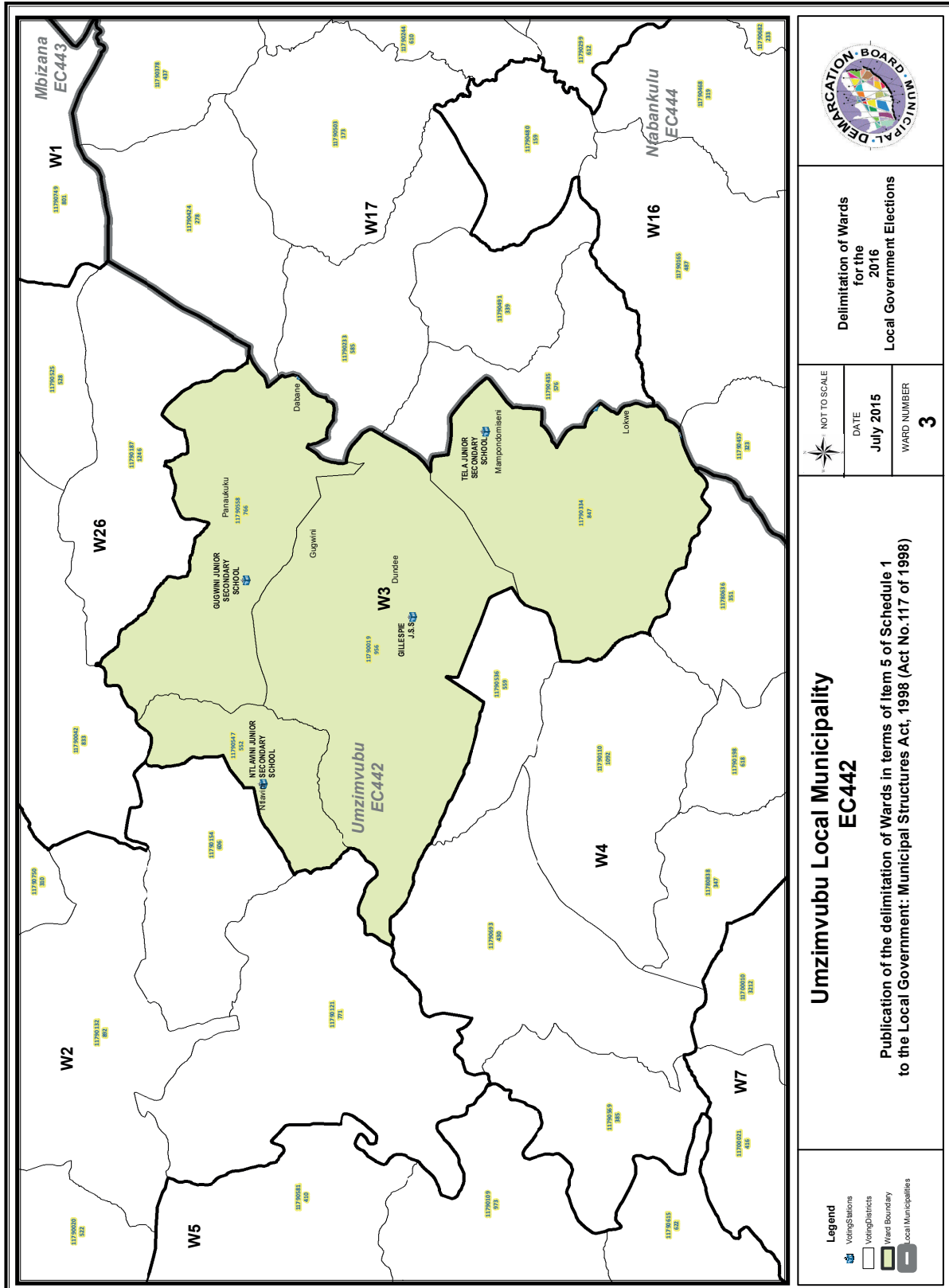
Delimitation of Wards  
for the  
2016  
Local Government Elections

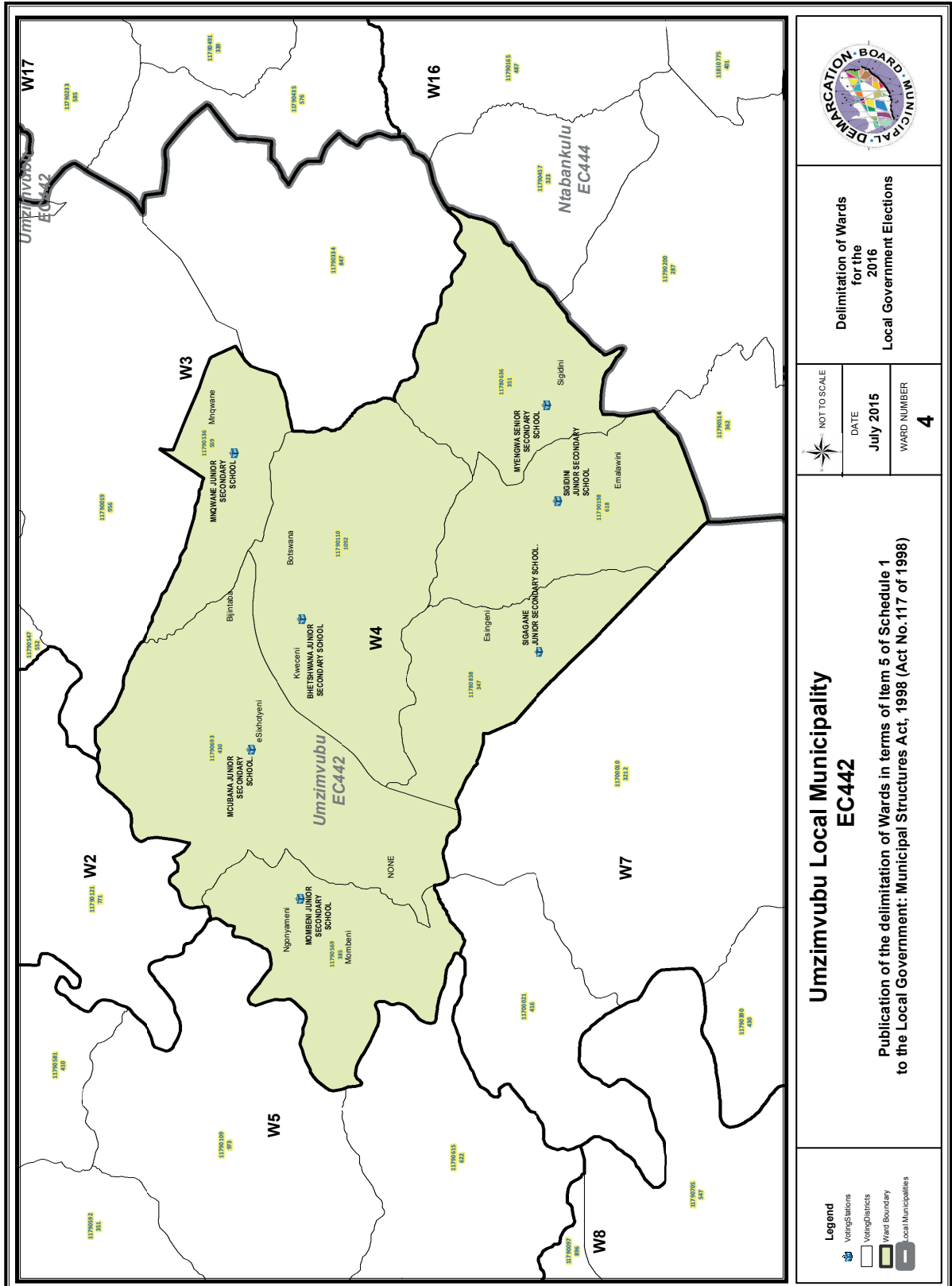
NOT TO SCALE
DATE July 2015
WARD NUMBER 2






### Umzimvubu Local Municipality EC442

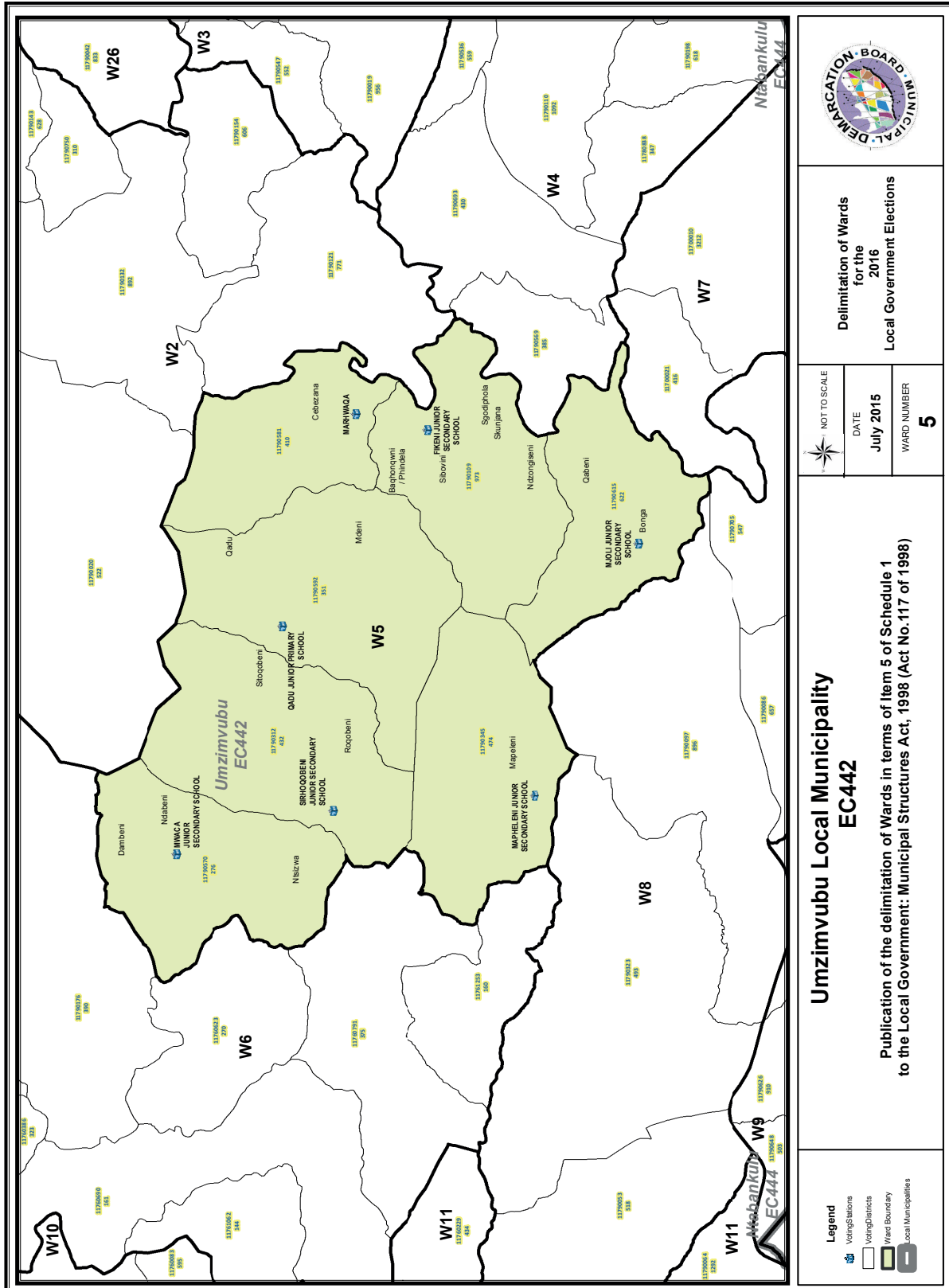
Publication of the delimitation of Wards in terms of Item 5 of Schedule 1  
to the Local Government: Municipal Structures Act, 1998 (Act No.117 of 1998)

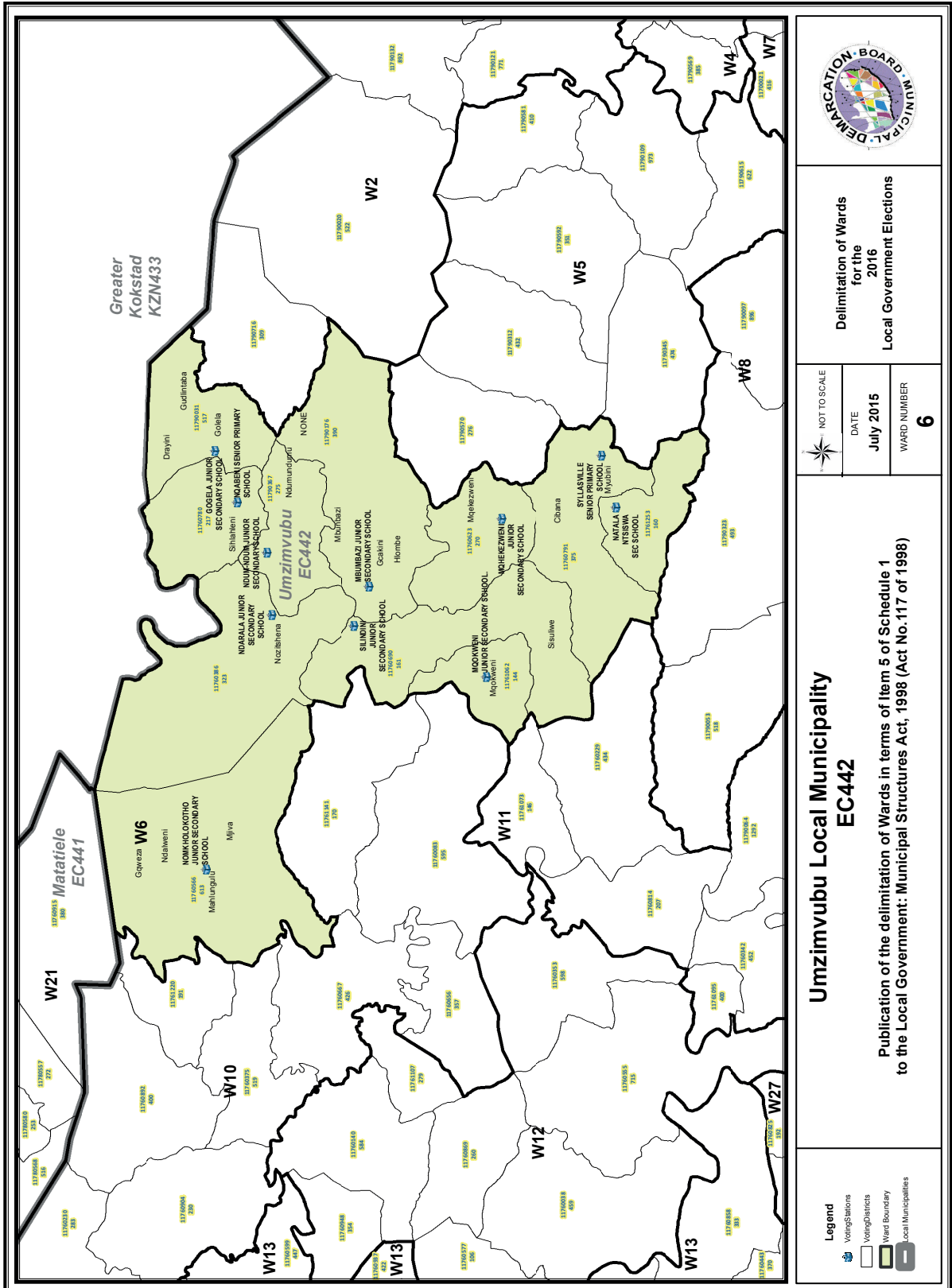
- Legend**
- Voting Stations
  - Voting Districts
  - Ward Boundary
  - Local Municipalities

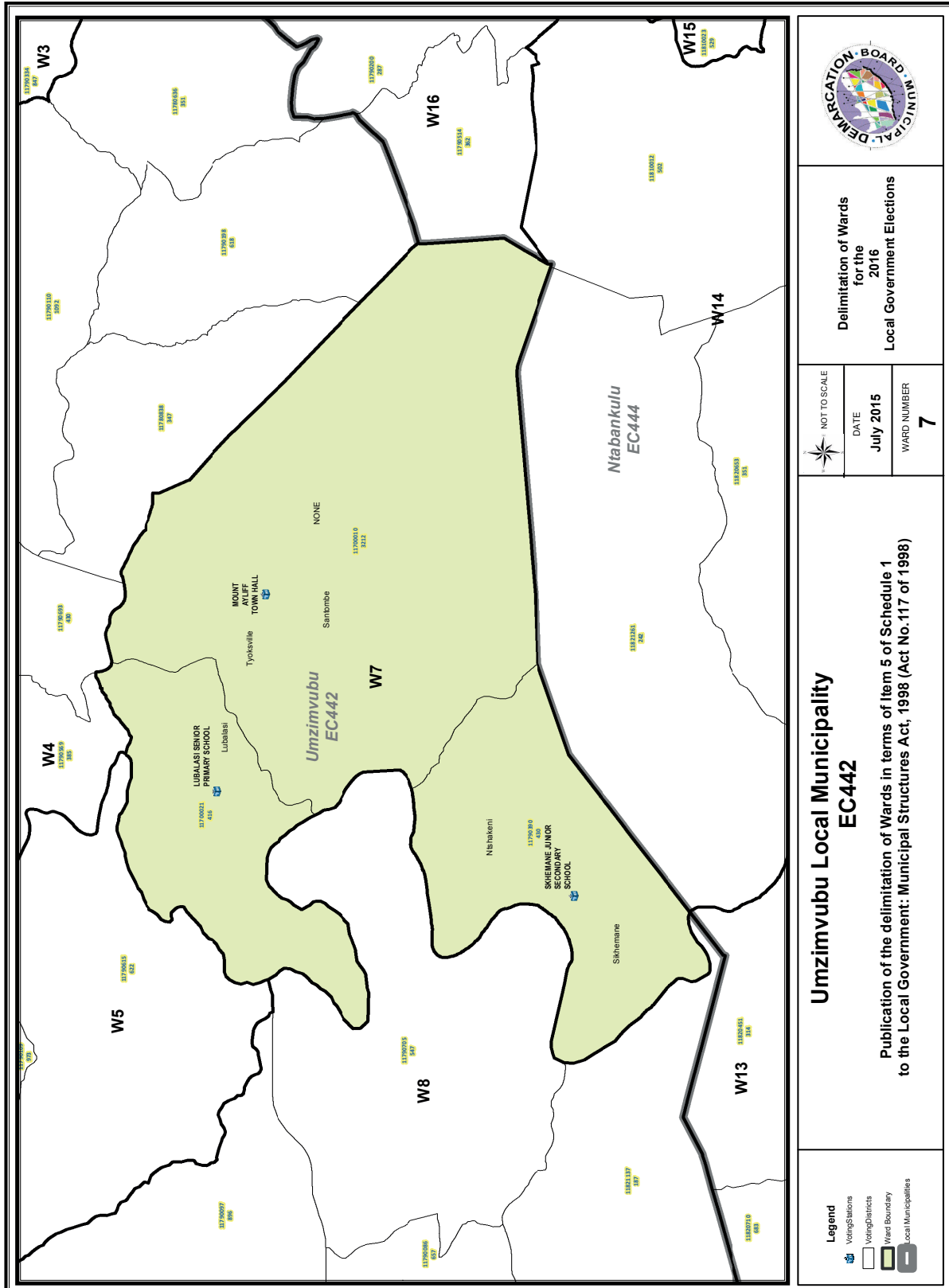


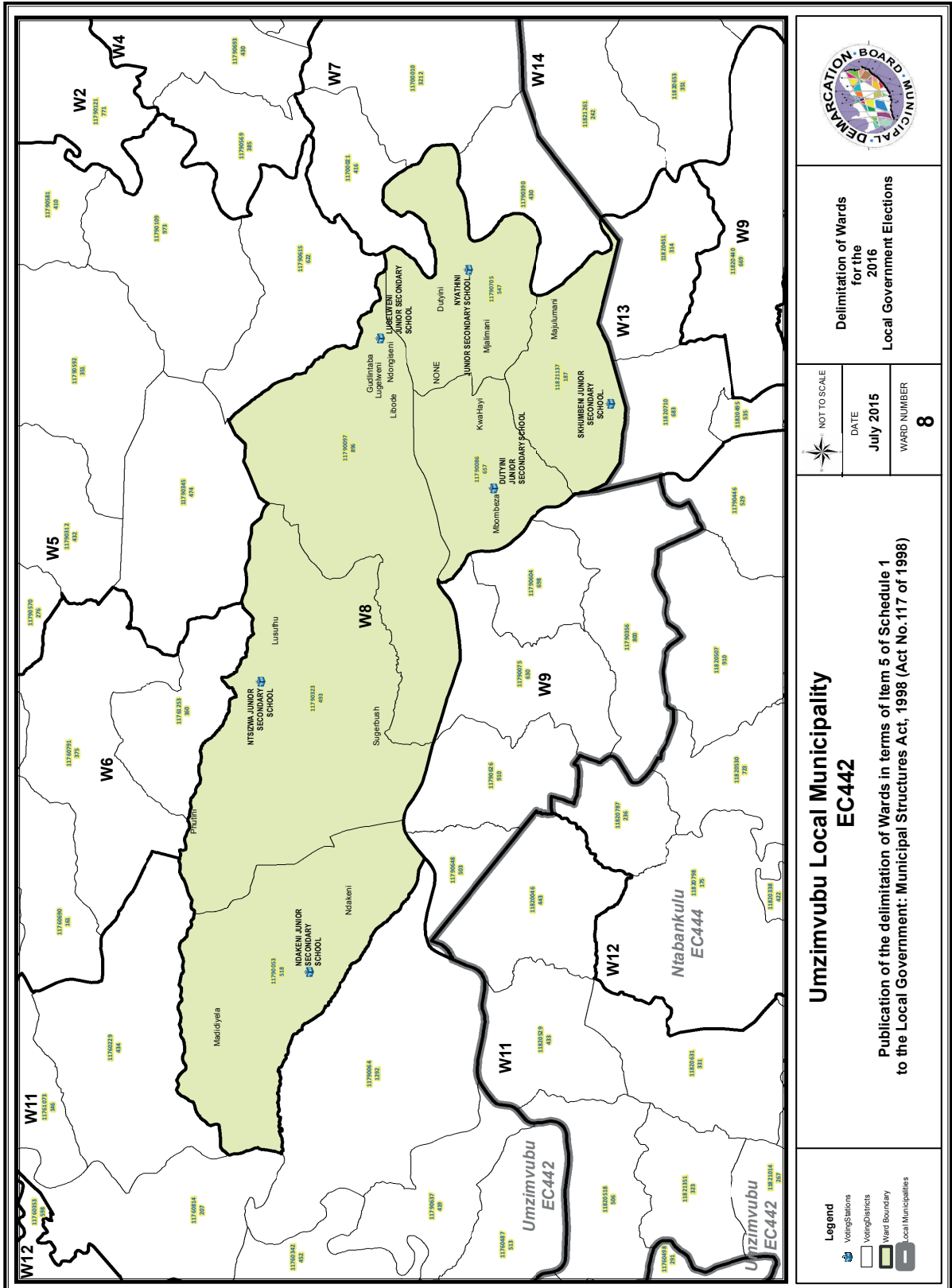


	<p><b>Delimitation of Wards for the 2016 Local Government Elections</b></p>				
<p>NOT TO SCALE</p>	<table border="1" style="width: 100%; border-collapse: collapse;"> <tr> <td style="text-align: center;">DATE</td> <td style="text-align: center;">WARD NUMBER</td> </tr> <tr> <td style="text-align: center;">July 2015</td> <td style="text-align: center;">4</td> </tr> </table>	DATE	WARD NUMBER	July 2015	4
DATE	WARD NUMBER				
July 2015	4				
<p><b>Umzimvubu Local Municipality EC442</b></p> <p>Publication of the delimitation of Wards in terms of Item 5 of Schedule 1 to the Local Government: Municipal Structures Act, 1998 (Act No.117 of 1998)</p>					
<p><b>Legend</b></p> <ul style="list-style-type: none"> <li> Voting Stations</li> <li> Voting Districts</li> <li> Ward Boundary</li> <li> Local Municipalities</li> </ul>					

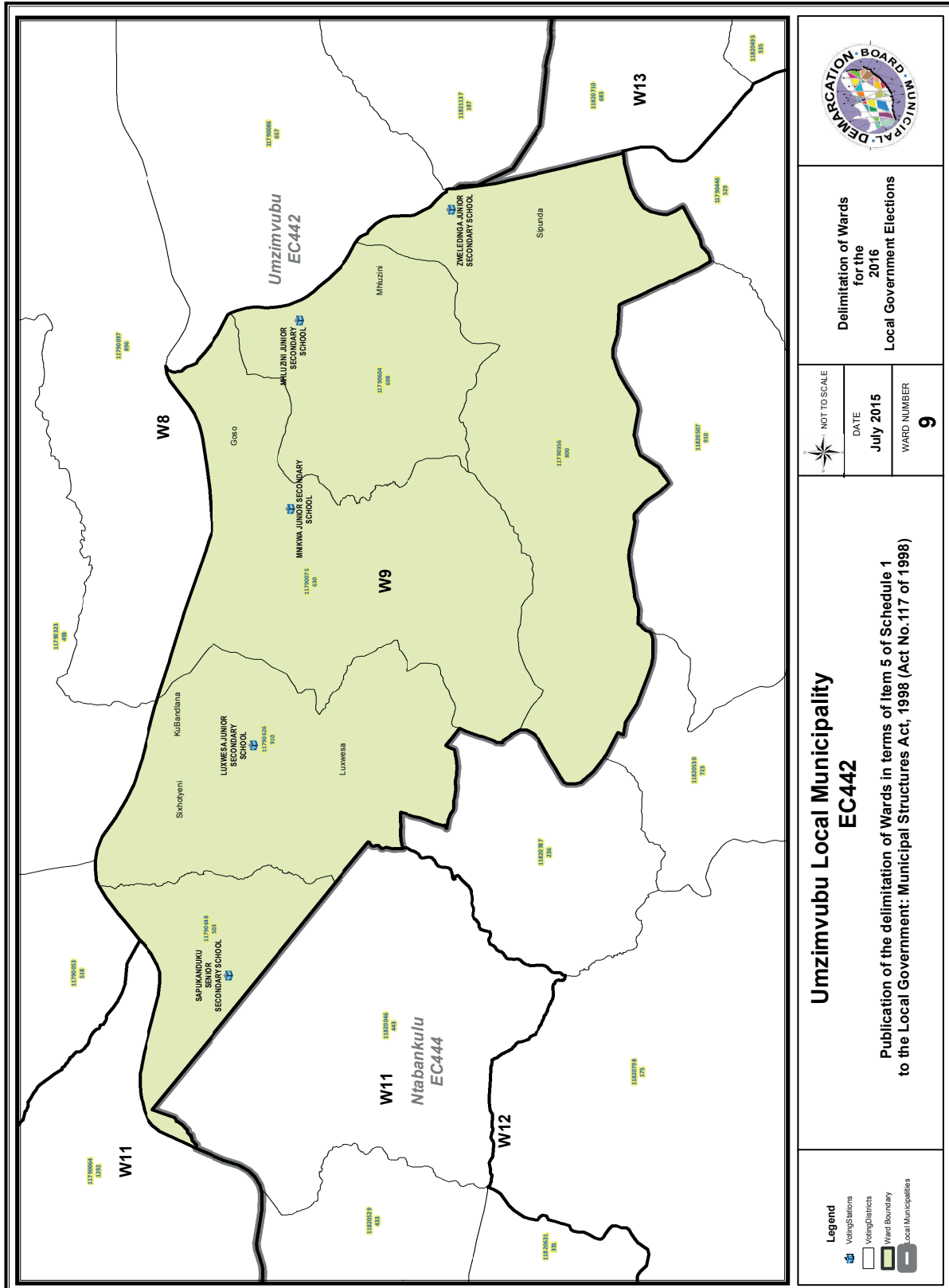


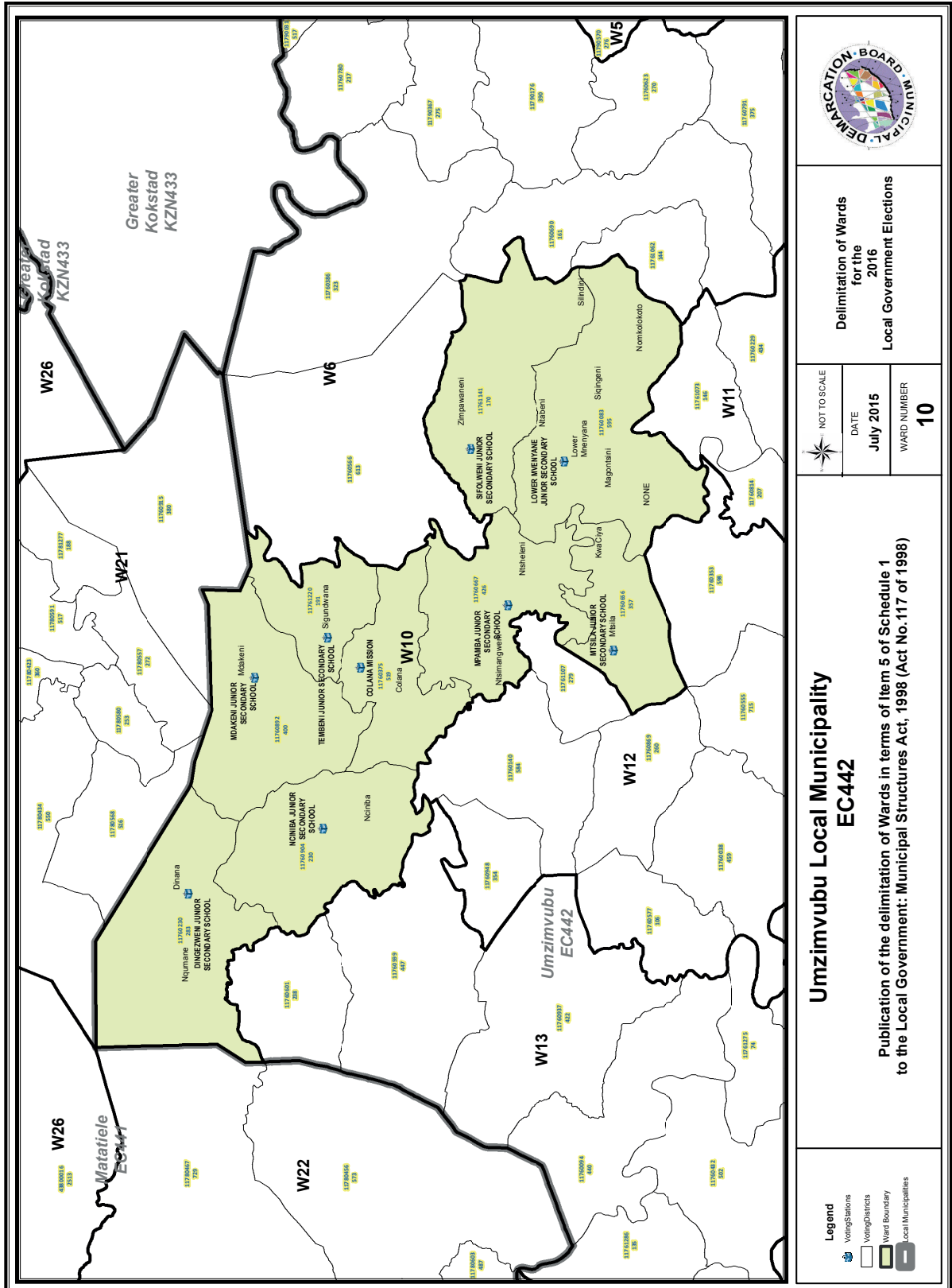












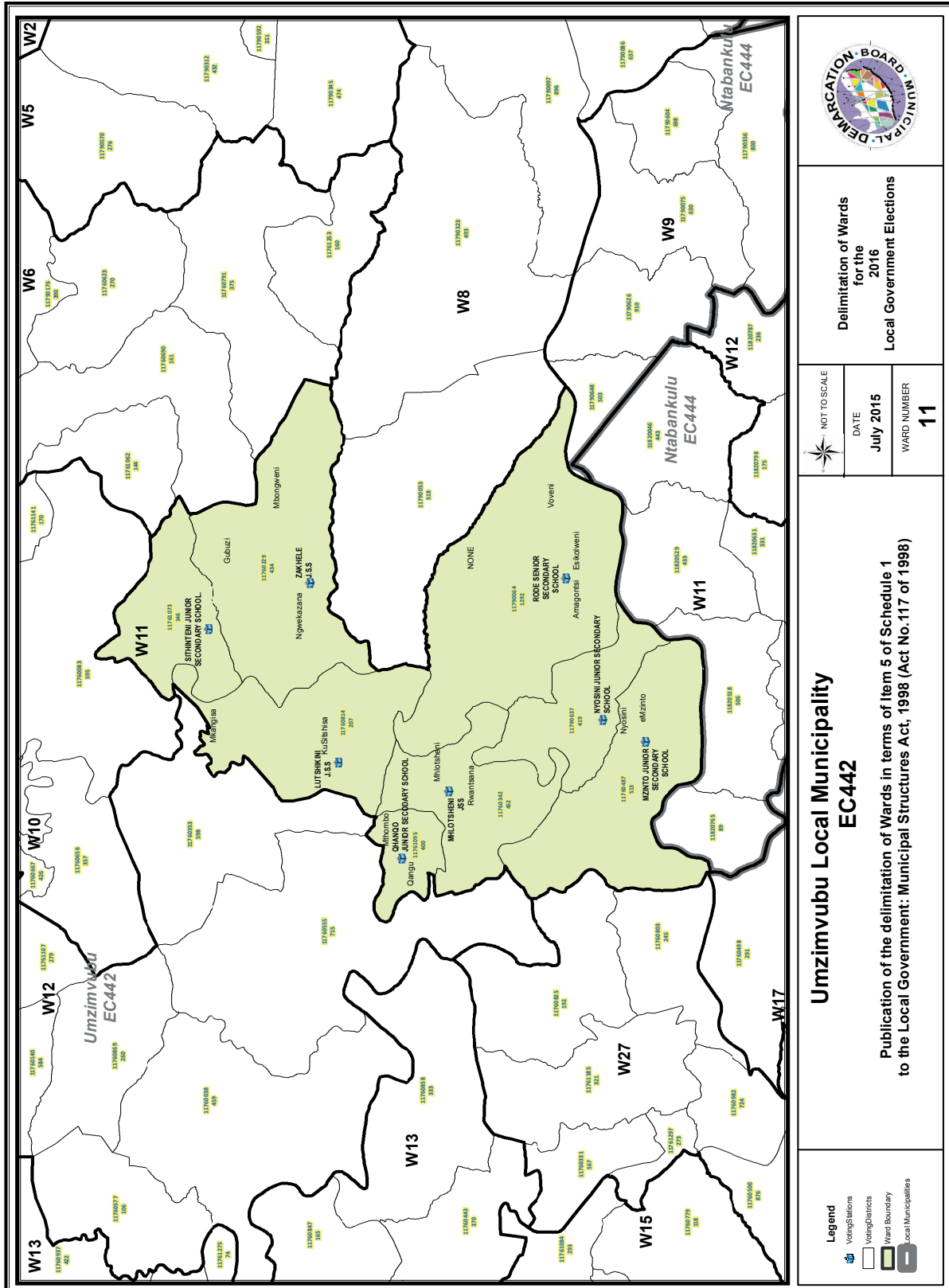
Delimitation of Wards  
for the  
2016  
Local Government Elections

NOT TO SCALE
DATE July 2015
WARD NUMBER <b>10</b>

**Umzimvubu Local Municipality  
EC442**

Publication of the delimitation of Wards in terms of Item 5 of Schedule 1  
to the Local Government: Municipal Structures Act, 1998 (Act No.117 of 1998)

- Legend**
- Voting Stations
  - Voting Districts
  - Ward Boundary
  - Local Municipalities



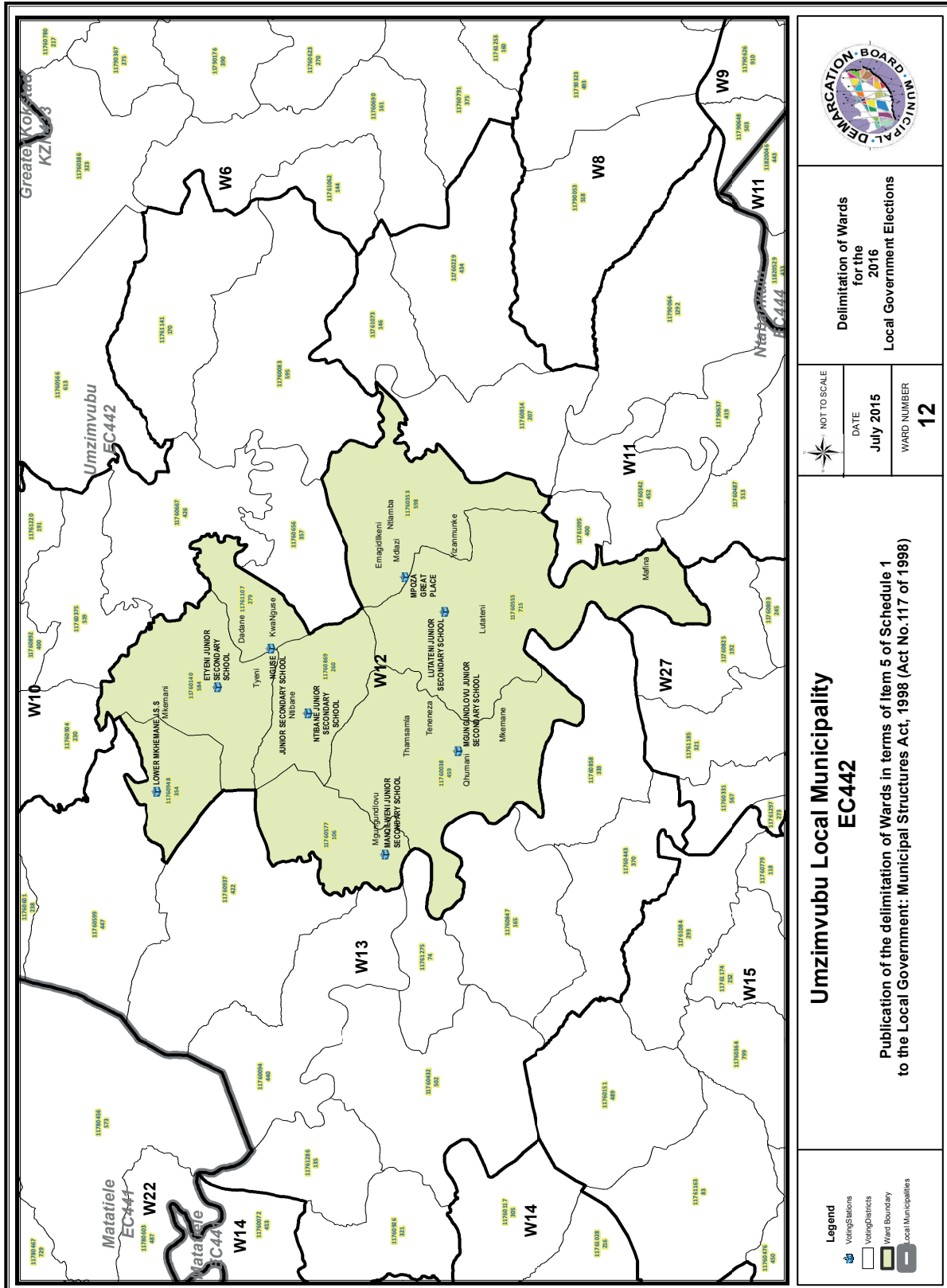
Delimitation of Wards  
for the  
2016  
Local Government Elections

NOT TO SCALE  
DATE  
July 2015  
WARD NUMBER  
11

**Umzimvubu Local Municipality  
EC442**

Publication of the delimitation of Wards in terms of Item 5 of Schedule 1  
to the Local Government: Municipal Structures Act, 1998 (Act No.117 of 1998)

- Legend**
- Voting Stations
  - Voting Districts
  - Ward Boundary
  - Local Municipalities



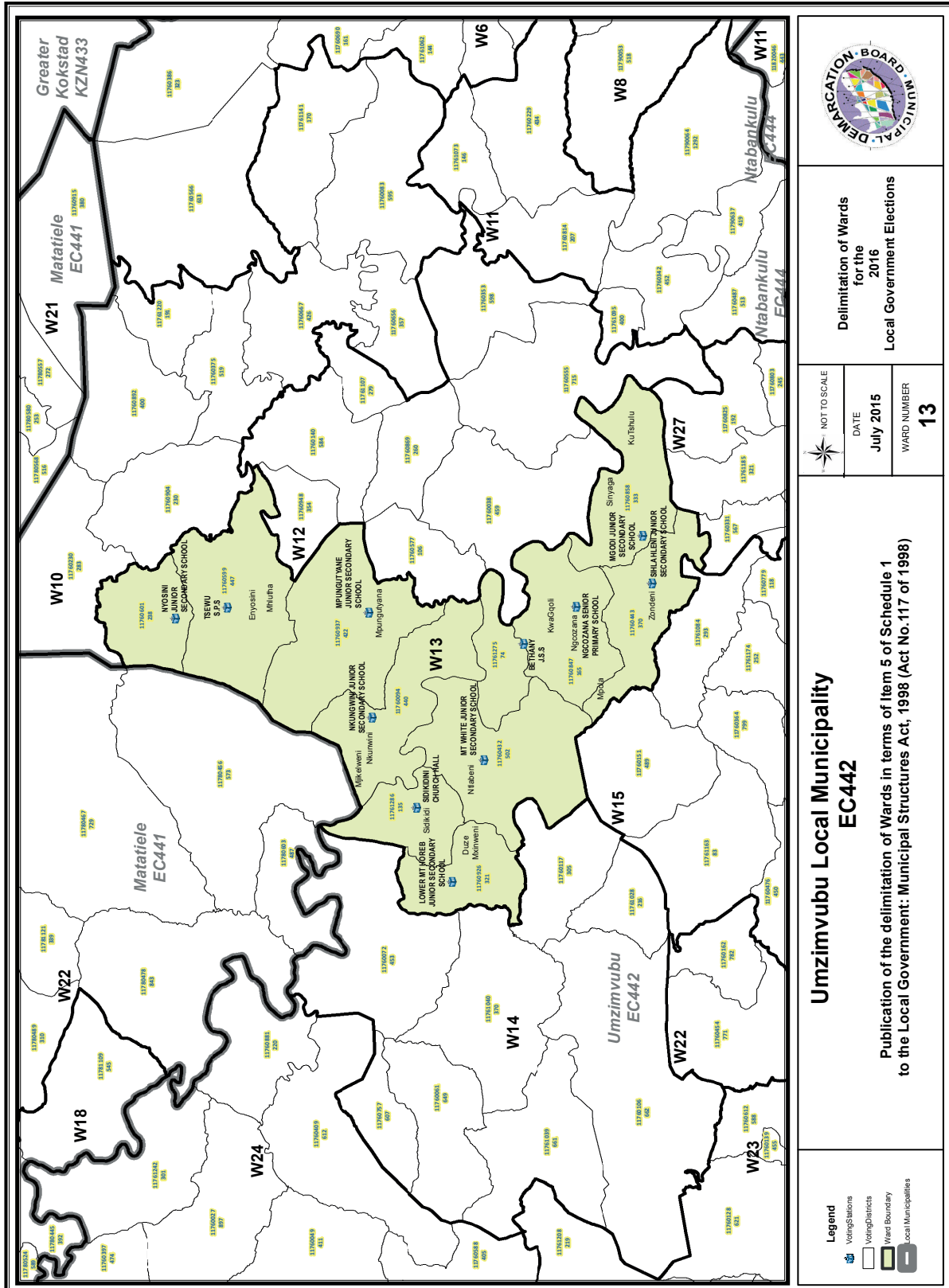
Delimitation of Wards  
for the  
2016  
Local Government Elections

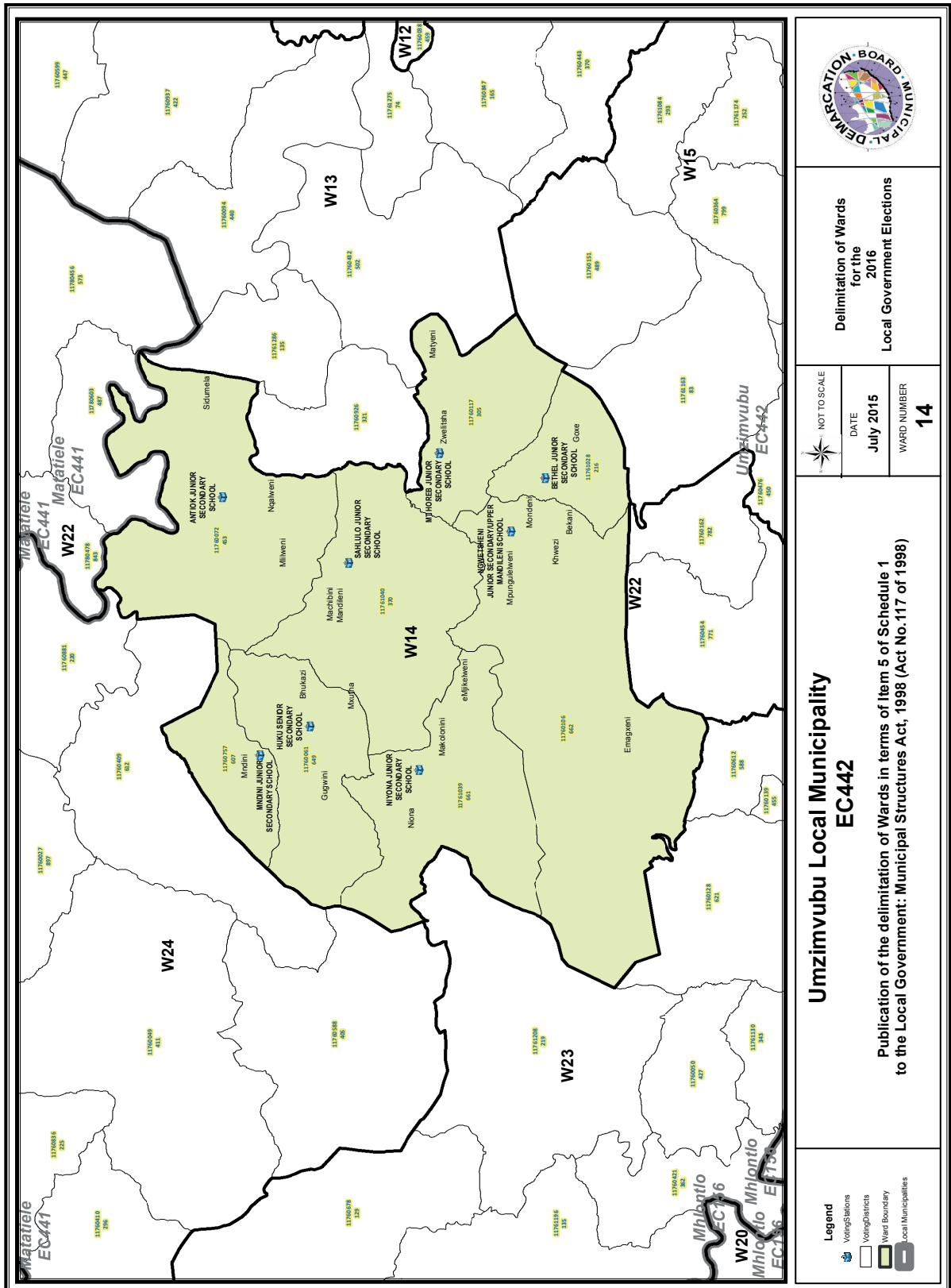
NOT TO SCALE
DATE July 2015
WARD NUMBER 12


**Umzimvubu Local Municipality EC442**

Publication of the delimitation of Wards in terms of Item 5 of Schedule 1 to the Local Government: Municipal Structures Act, 1998 (Act No.117 of 1998)

- Legend**
- Voting Stations
  - Voting Districts
  - Ward Boundary
  - Local Municipalities








**Delimitation of Wards for the 2016 Local Government Elections**

---

NOT TO SCALE



DATE  
**July 2015**

WARD NUMBER  
**14**

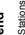
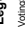


---

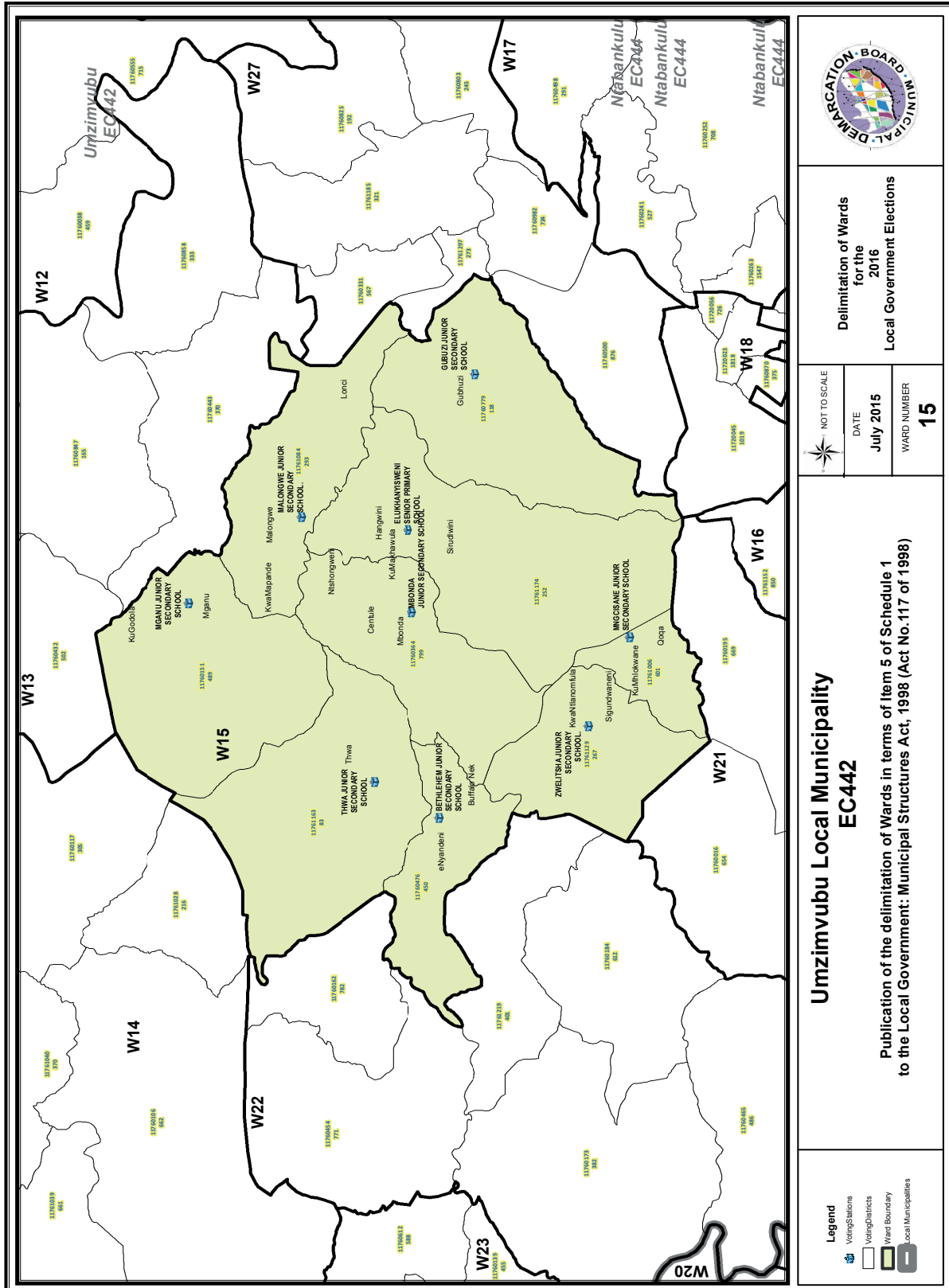
**Urmzimvubu Local Municipality EC442**

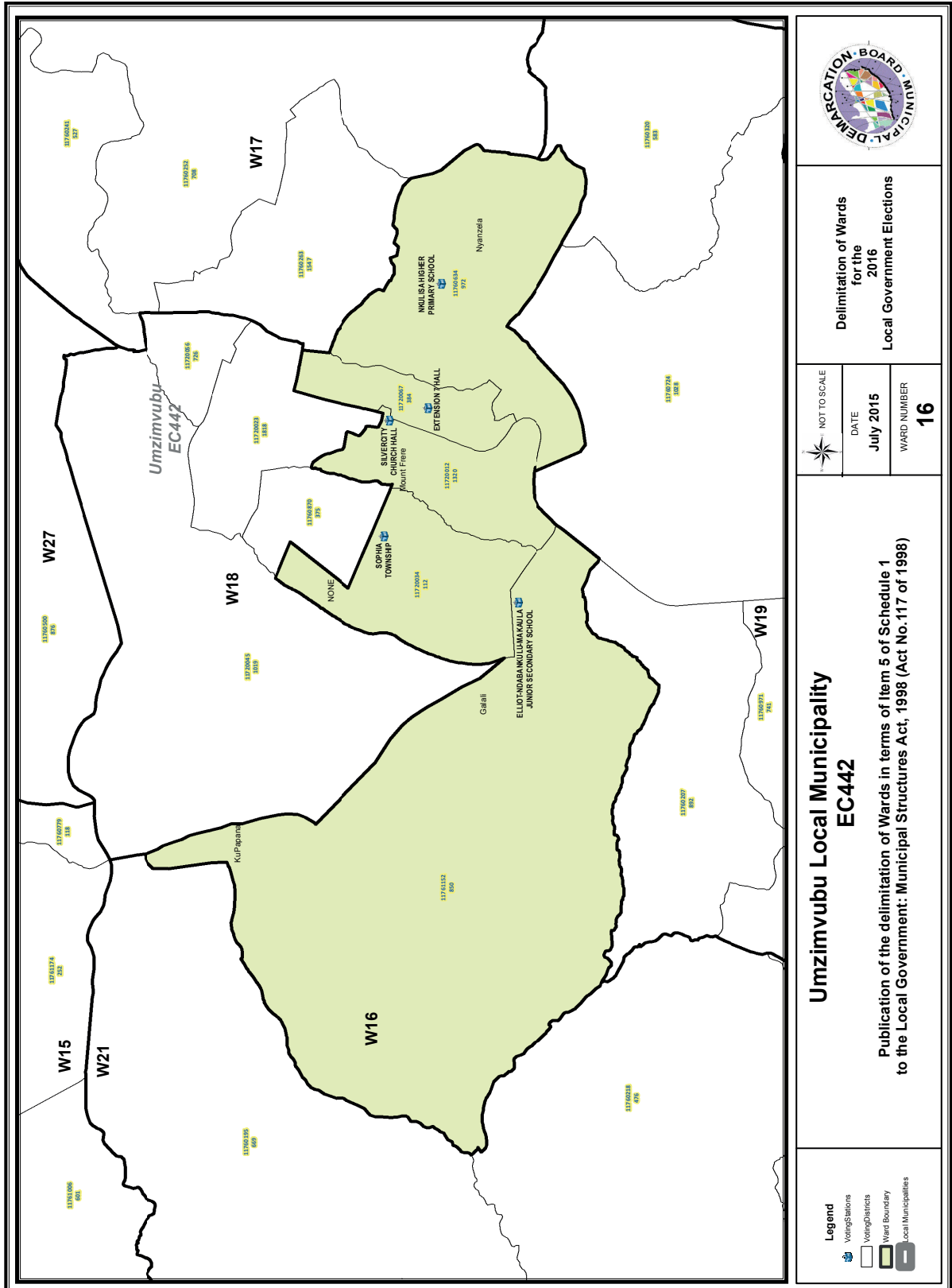
Publication of the delimitation of Wards in terms of Item 5 of Schedule 1 to the Local Government: Municipal Structures Act, 1998 (Act No.117 of 1998)

---

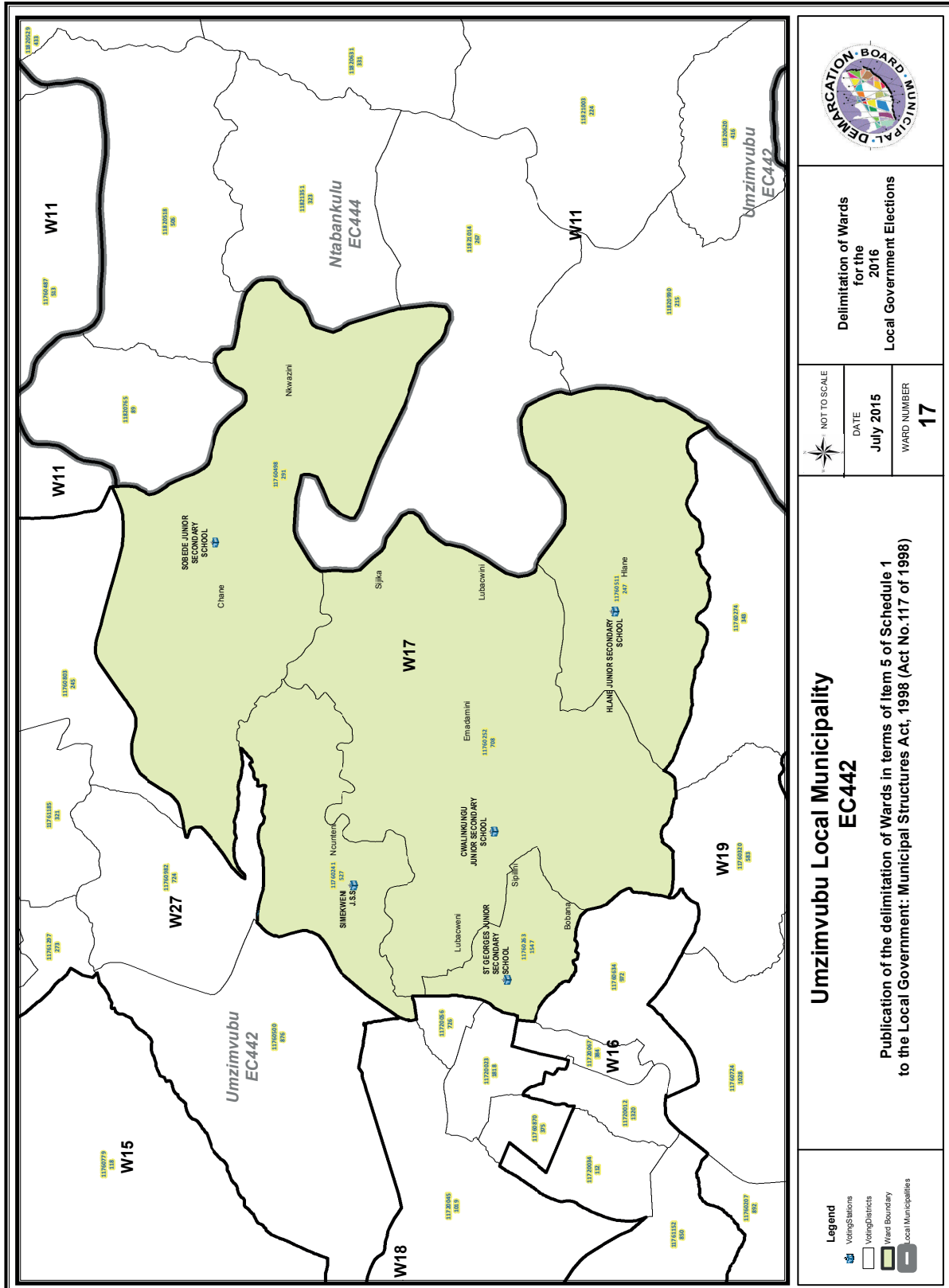
**Legend**

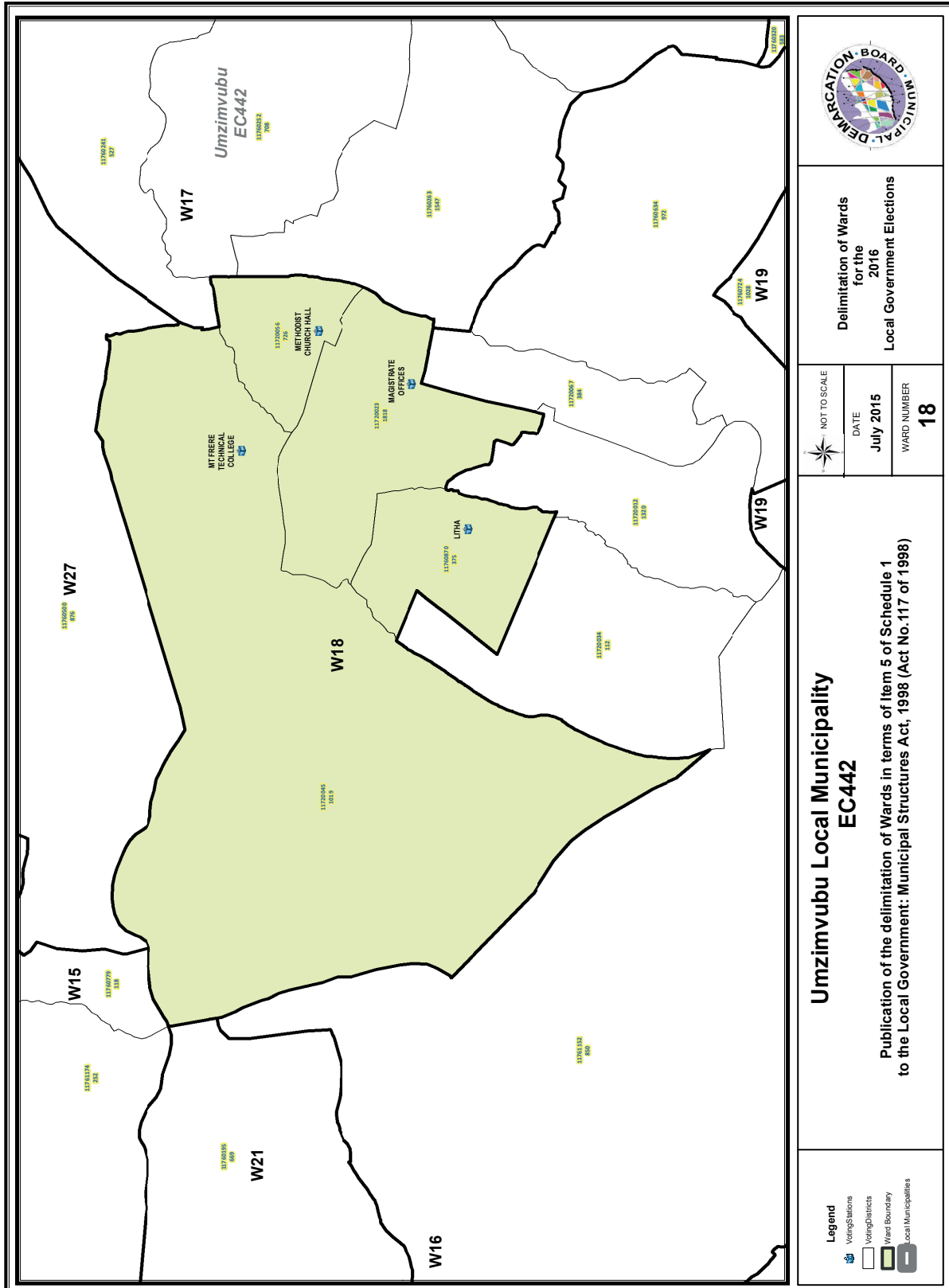
-  Voting Stations
-  Voting Districts
-  Ward Boundary
-  Local Municipalities

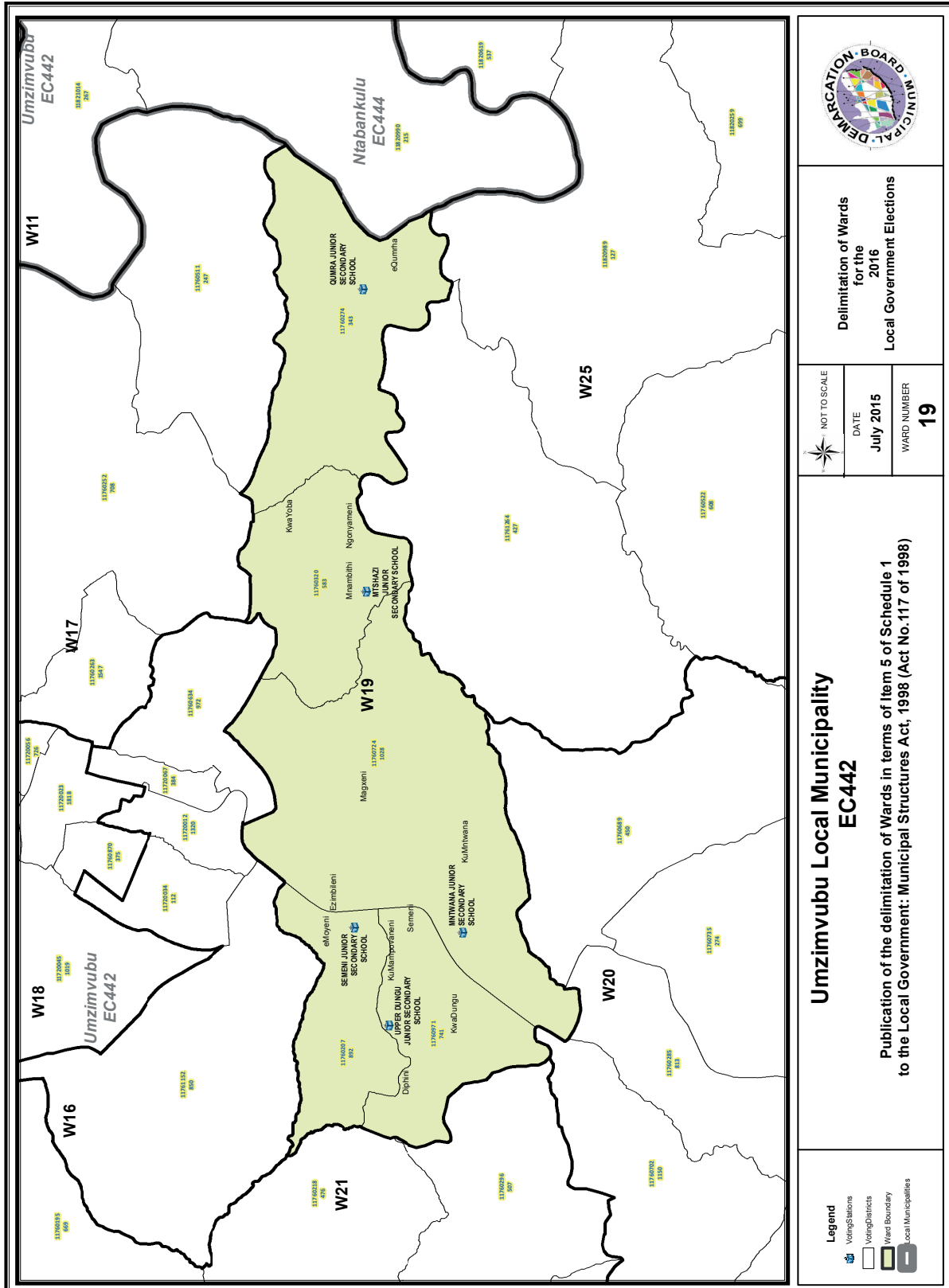


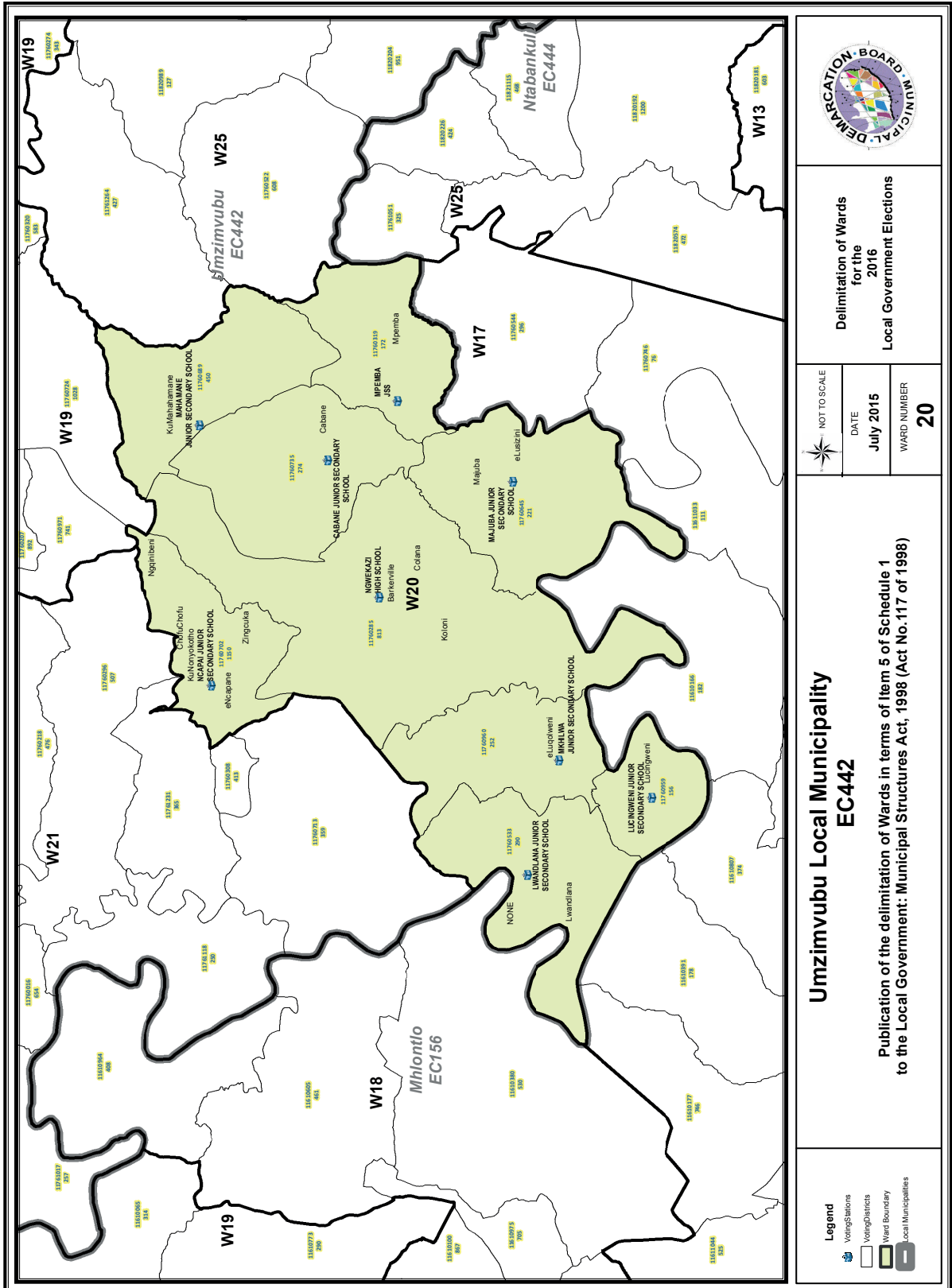


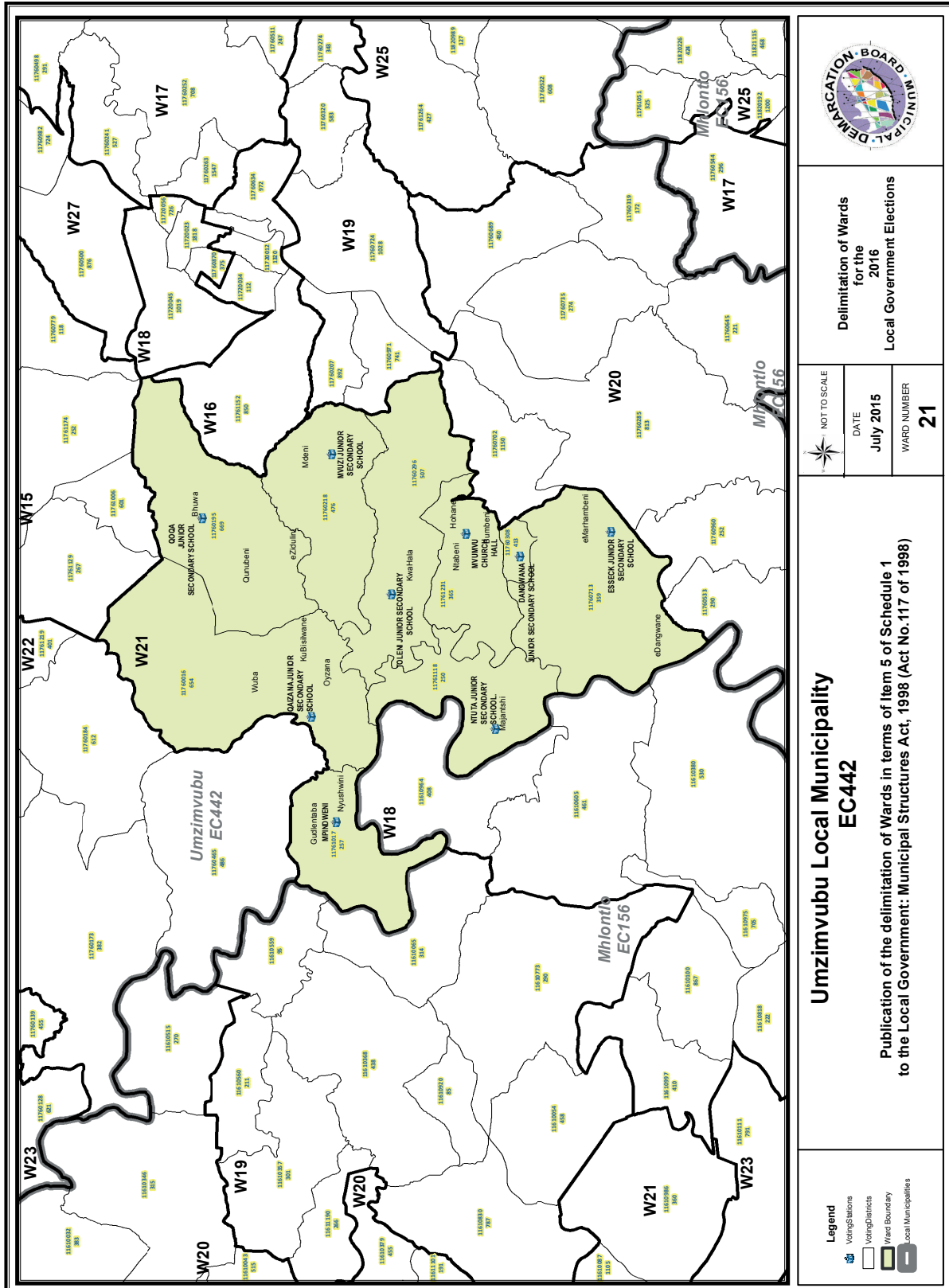












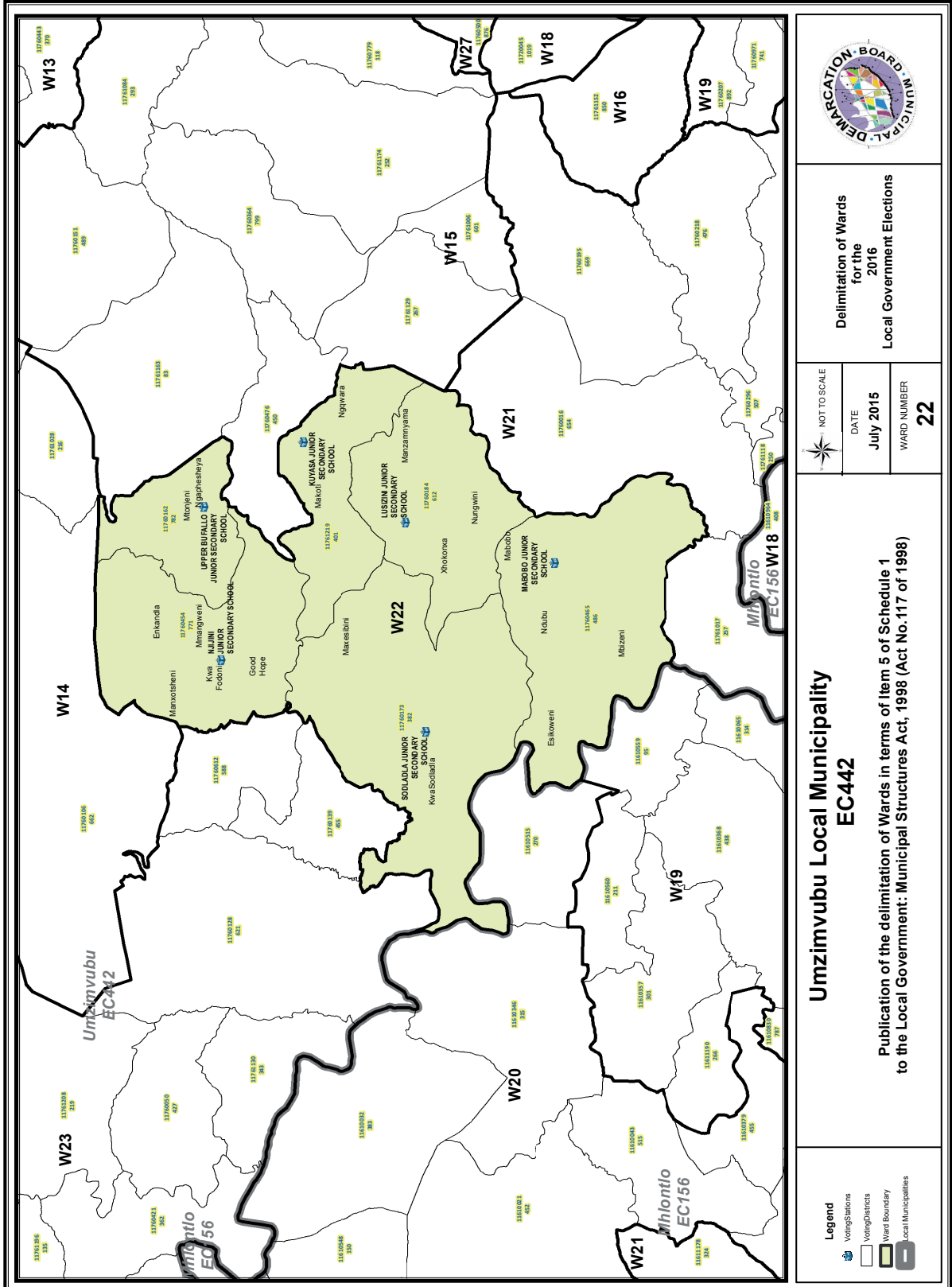
Delimitation of Wards  
for the  
2016  
Local Government Elections

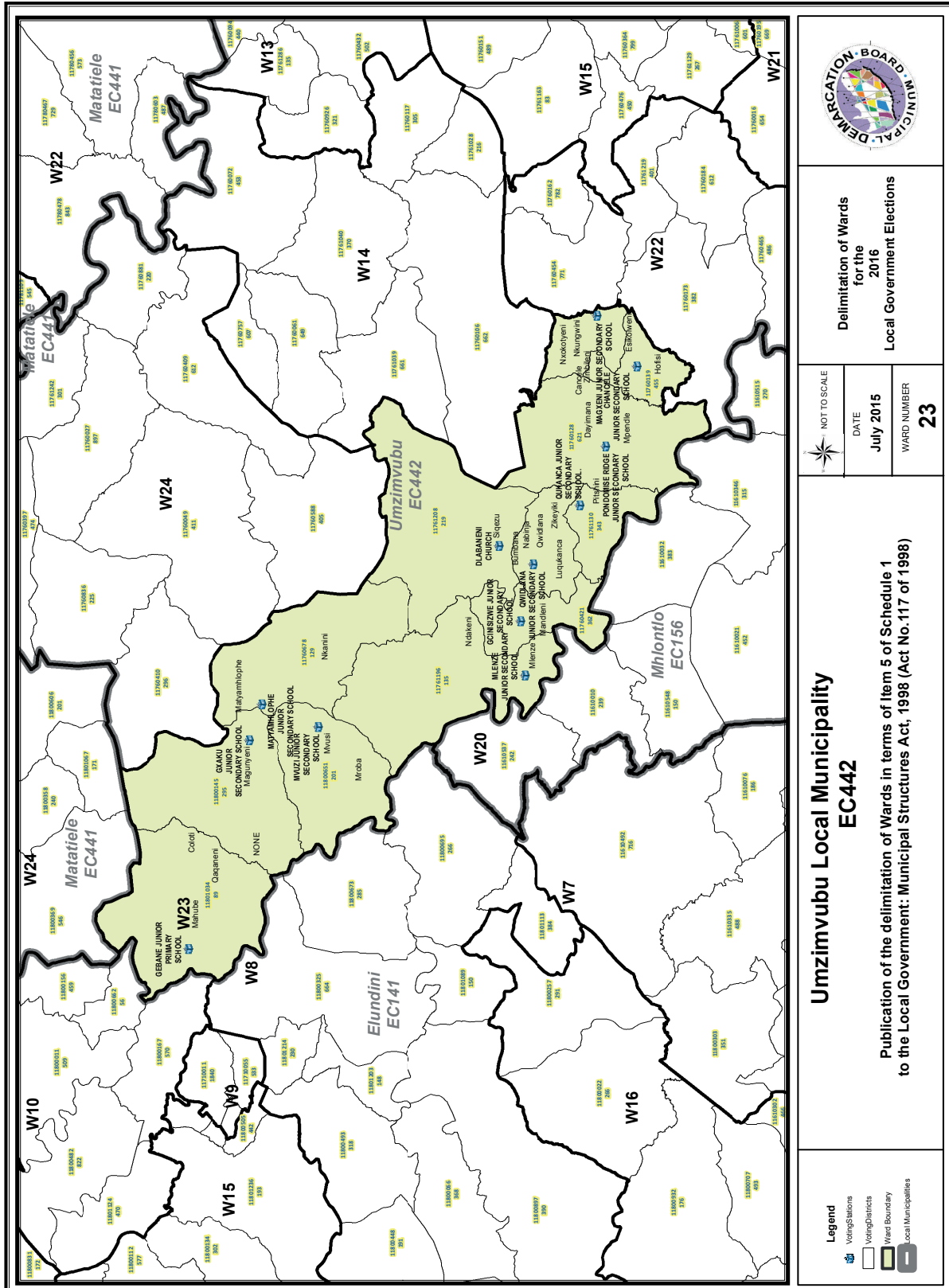
NOT TO SCALE  
DATE  
July 2015  
WARD NUMBER  
**21**

**Umzimvubu Local Municipality  
EC442**

Publication of the delimitation of Wards in terms of Item 5 of Schedule 1  
to the Local Government: Municipal Structures Act, 1998 (Act No.117 of 1998)

- Legend**
- Voting Stations
  - Voting Districts
  - Ward Boundary
  - Local Municipalities





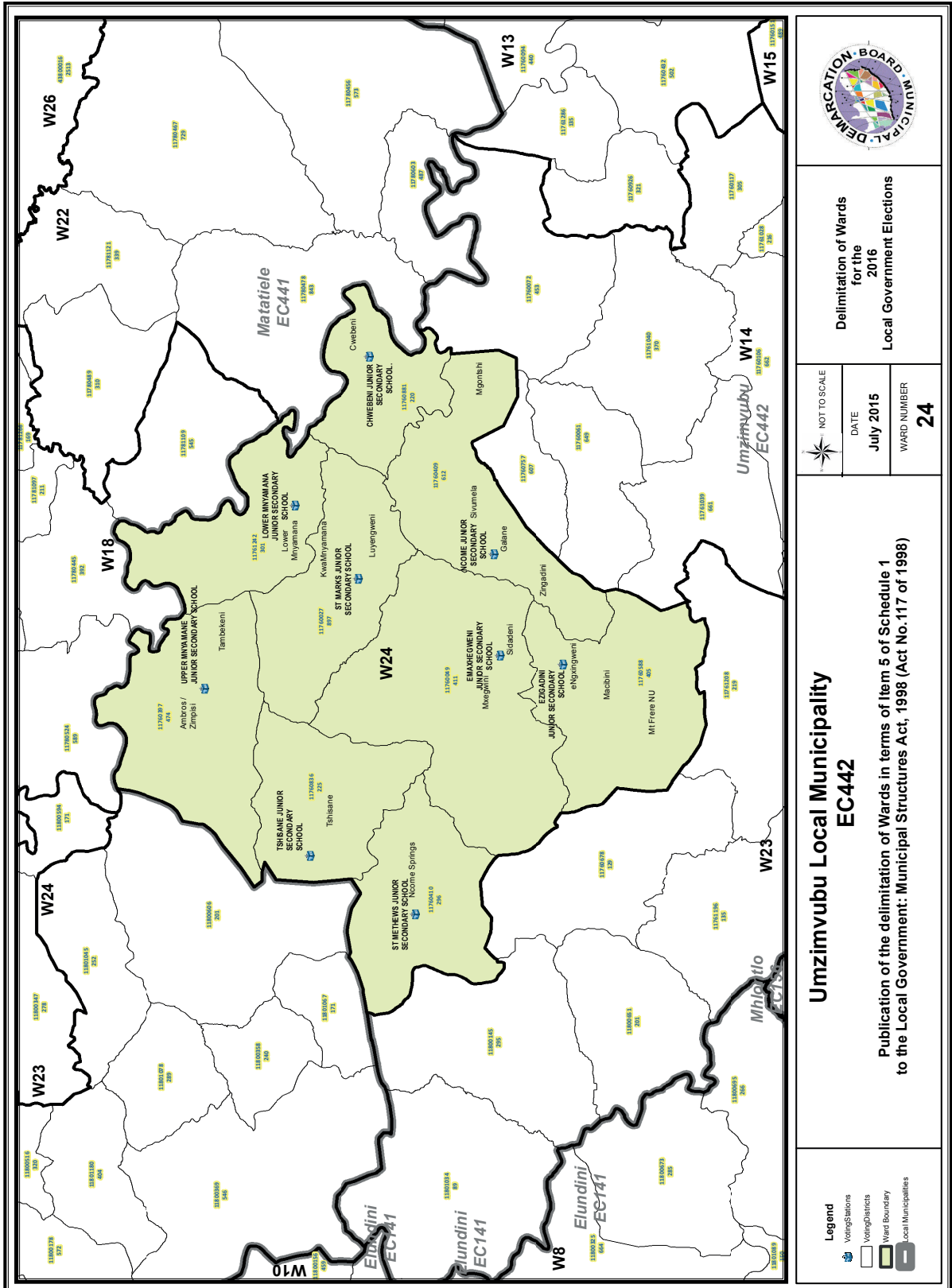
**Delimitation of Wards  
for the  
2016  
Local Government Elections**

NOT TO SCALE
DATE <b>July 2015</b>
WARD NUMBER <b>23</b>

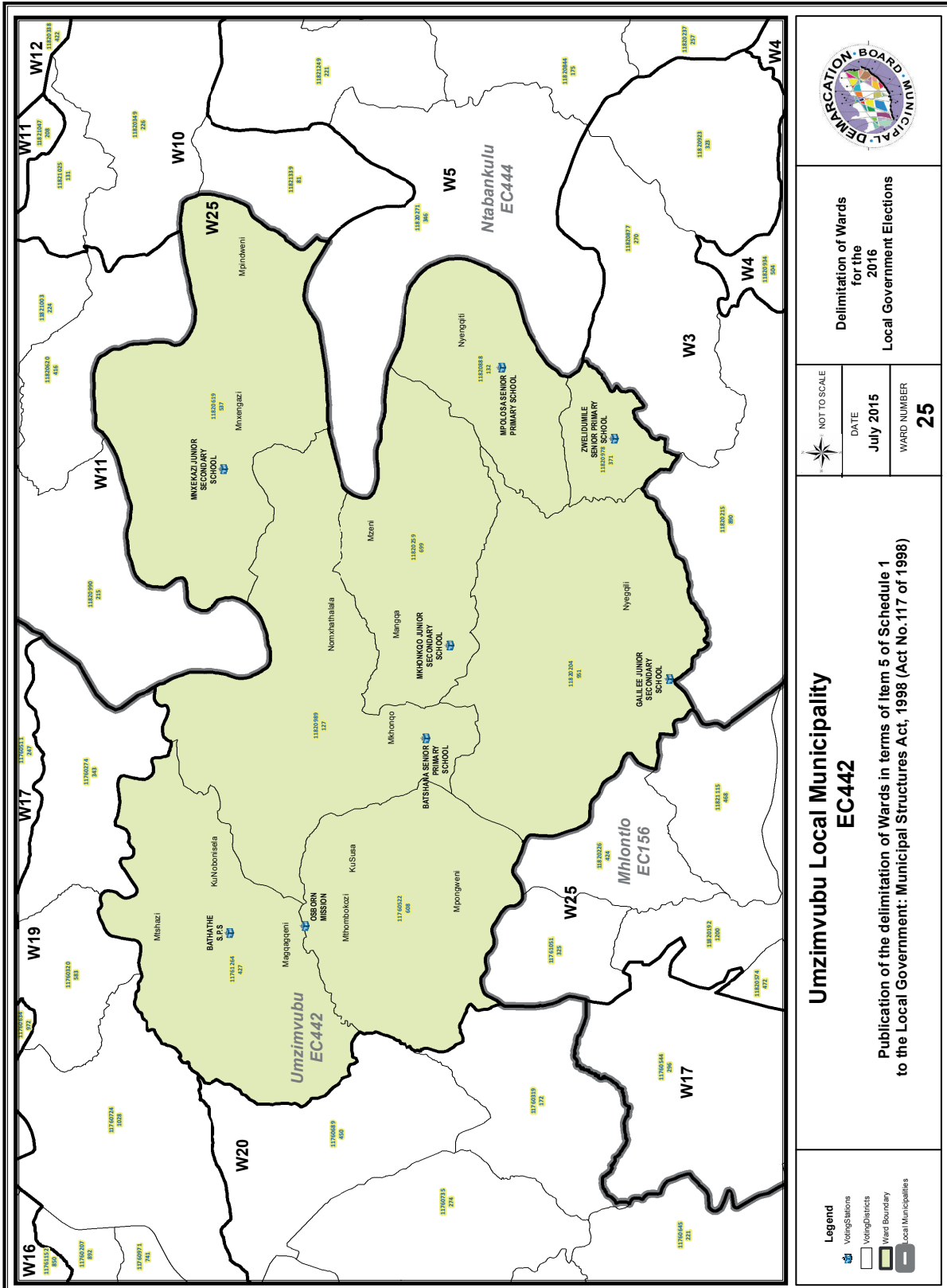
**Umzimvubu Local Municipality  
EC442**

**Publication of the delimitation of Wards in terms of Item 5 of Schedule 1  
to the Local Government: Municipal Structures Act, 1998 (Act No.117 of 1998)**

- Legend**
- Voting Stations
  - Voting Districts
  - Ward Boundary
  - Local Municipalities





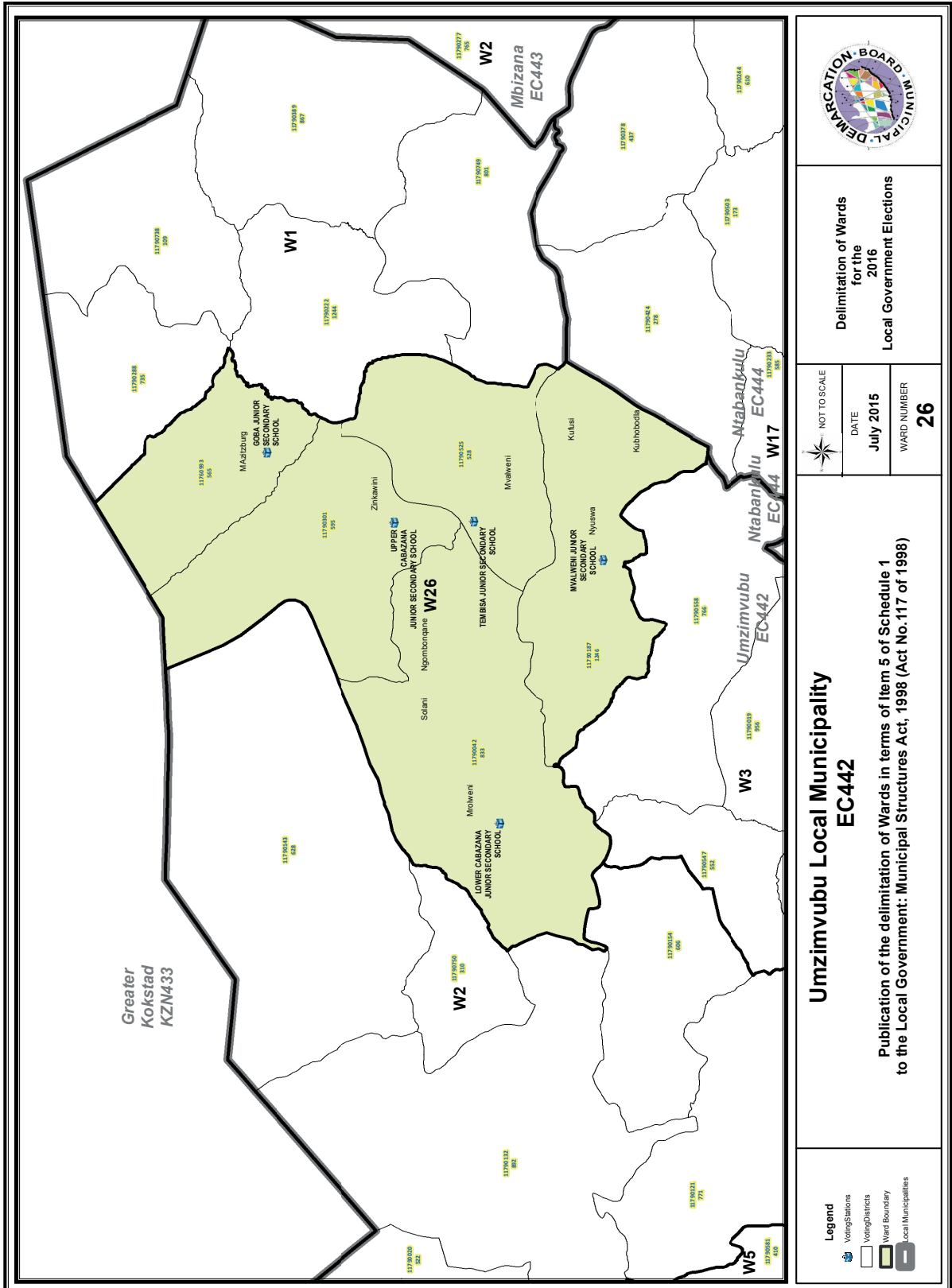


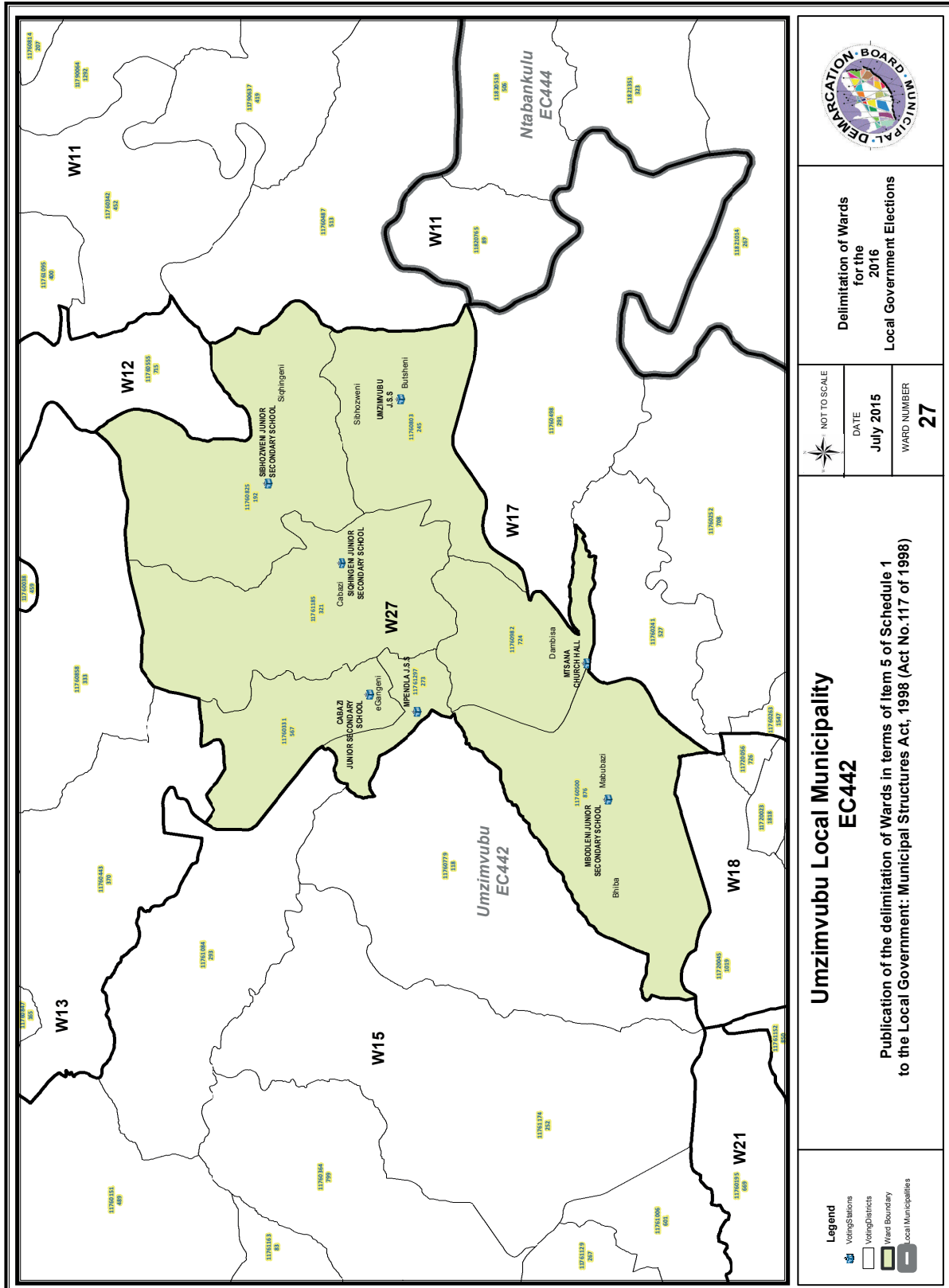
Delimitation of Wards  
for the  
2016  
Local Government Elections

NOT TO SCALE  
DATE  
July 2015  
WARD NUMBER  
25

**Umzimvubu Local Municipality  
EC442**  
Publication of the delimitation of Wards in terms of Item 5 of Schedule 1  
to the Local Government: Municipal Structures Act, 1998 (Act No.117 of 1998)

- Legend**
- Voting Stations
  - Voting Districts
  - Ward Boundary
  - Local Municipalities





**FORM/VORM MDB5**

**WARD DELIMITATION/**

**WYKSAFBAKENING**

**OBJECTION IN TERMS OF ITEM 5(2) OF SCHEDULE 1 TO THE LOCAL GOVERNMENT:  
MUNICIPAL STRUCTURES ACT, 1998**

**BESWAAR INGEVOLGE ITEM 5(2) VAN BYLAE 1 VAN DIE WET OP PLAASLIKE REGERING:  
MUNISIPALE STRUKTURE, 1998**

**Name of municipality/ Naam van Munisipaliteit : .....**

**Code/Kode : .....**

**Name of aggrieved person/institution/Naam van beswaarde persoon/instelling :  
.....**

**Contact person in case of an institution/ Kontak persoon in geval van 'n instelling:  
.....**

**Address/Adres: .....**

**Tel. number/ Tel. nommer:.....Cell number/ Selfoonnommer: .....**

**Email address: .....**

PLEASE USE ADDITIONAL PAGE SHOULD THE ALTERNATIVE PROPOSALS BE MORE THAN THE FOLLOWING SPACE AVAILABLE.

I request the Municipal Demarcation Board to consider the following alternative proposals/ Ek versoek die Munisipale Afbakeningsraad om die volgende alternatiewe voorstelle te oorweeg:

Ward number/ Wyk nommer	The ward should comprise of the following voting districts (Provide voting district number and the number of voters in brackets e.g. VD1123456(1500)+VD345678(2500)=4000)/  Die wyk moet bestaan uit die volgende stemdistrikte: (Voorsien die stemdistriknommer en die getal geregistreerde kiesers as volg VD1123456(1500)+VD345678(2500)=4000)	Motivation /Motivering

I confirm that/ Ek bevestig dat:

- each cluster of voting districts form a contiguous ward/ die saamgevoegde stemdistrikte vorm 'n aaneenlopende wyk;
- the number of voters in each ward fall within the minimum and maximum of voters allowed per ward/ die getal kiesers in elke wyk is binne die minimum en maksimum getal wat per wyk toegelaat word;
- the proposed ward boundaries comply, in general, with the criteria/ die voorgestelde wyke voldoen in die algemeen aan die kriteria.

\_\_\_\_\_  
SIGNATURE

\_\_\_\_\_  
NAME AND SURNAME

\_\_\_\_\_  
DATE





# IMPORTANT

## Information

### from Government Printing Works

Dear Valued Customers,

Government Printing Works has implemented rules for completing and submitting the electronic Adobe Forms when you, the customer, submits your notice request.

Please take note of these guidelines when completing your form.

#### GPW Business Rules

1. No hand written notices will be accepted for processing, this includes Adobe forms which have been completed by hand.
2. Notices can only be submitted in Adobe electronic form format to the email submission address [submit.egazette@gpw.gov.za](mailto:submit.egazette@gpw.gov.za). This means that any notice submissions not on an Adobe electronic form that are submitted to this mailbox will be **rejected**. National or Provincial gazette notices, where the Z95 or Z95Prov must be an Adobe form but the notice content (body) will be an attachment.
3. Notices brought into GPW by "walk-in" customers on electronic media can only be submitted in Adobe electronic form format. This means that any notice submissions not on an Adobe electronic form that are submitted by the customer on electronic media will be **rejected**. National or Provincial gazette notices, where the Z95 or Z95Prov must be an Adobe form but the notice content (body) will be an attachment.
4. All customers who walk in to GPW that wish to submit a notice that is not on an electronic Adobe form will be routed to the Contact Centre where the customer will be taken through the completion of the form by a GPW representative. Where a customer walks into GPW with a stack of hard copy notices delivered by a messenger on behalf of a newspaper the messenger must be referred back to the sender as the submission does not adhere to the submission rules.
5. All notice submissions that do not comply with point 2 will be charged full price for the notice submission.
6. The current cut-off of all Gazette's remains unchanged for all channels. (Refer to the GPW website for submission deadlines – [www.gpwonline.co.za](http://www.gpwonline.co.za))
7. Incorrectly completed forms and notices submitted in the wrong format will be rejected to the customer to be corrected and resubmitted. Assistance will be available through the Contact Centre should help be required when completing the forms. (012-748 6200 or email [info.egazette@gpw.gov.za](mailto:info.egazette@gpw.gov.za))
8. All re-submissions by customers will be subject to the above cut-off times.
9. All submissions and re-submissions that miss the cut-off will be rejected to the customer to be submitted with a new publication date.
10. Information on forms will be taken as the primary source of the notice to be published. Any instructions that are on the email body or covering letter that contradicts the notice form content will be ignored.

You are therefore advised that effective from **Monday, 18 May 2015** should you not comply with our new rules of engagement, all notice requests will be rejected by our new system.

Furthermore, the fax number **012- 748 6030** will also be **discontinued** from this date and customers will only be able to submit notice requests through the email address [submit.egazette@gpw.gov.za](mailto:submit.egazette@gpw.gov.za).



Printed by and obtainable from the Government Printer, Bosman Street, Private Bag X85, Pretoria, 0001.  
 Contact Centre Tel: 012-748 6200. eMail: [info.egazette@gpw.gov.za](mailto:info.egazette@gpw.gov.za)  
 Also available at the Legal Advisory Services, **Province of the Eastern Cape**, Private Bag X0047, Bisho, 5605.  
 Tel. (040) 635-0052.