



PROVINCE OF THE EASTERN CAPE  
IPHONDO LEMPUMA KOLONI  
PROVINSIE OOS-KAAP

**Provincial Gazette  
Igazethi Yephondo  
Provinsiale Koerant  
(Extraordinary)**

Vol. 22

BISHO/KING WILLIAM'S TOWN  
16 NOVEMBER 2015  
16 NOVEMBER 2015

No. 3547

**We all have the power to prevent AIDS**



**AIDS  
HELPLINE**

**0800 012 322**

DEPARTMENT OF HEALTH

**Prevention is the cure**

*N.B. The Government Printing Works will not be held responsible for the quality of "Hard Copies" or "Electronic Files" submitted for publication purposes*

ISSN 1682-4556



9 771682 455006

03547



# Government Printing Works

## Notice submission deadlines

Government Printing Works has over the last few months implemented rules for completing and submitting the electronic Adobe Forms when you, the customer, submit your notice request.

In line with these business rules, GPW has revised the notice submission deadlines for all gazettes. Please refer to the GPW website [www.gpwonline.co.za](http://www.gpwonline.co.za) to familiarise yourself with the new deadlines.

### CANCELLATIONS

Don't forget!

Cancellation of notice submissions are accepted by GPW according to the deadlines stated in the table above. Non-compliance to these deadlines will result in your request being failed. **Please pay special attention to the different deadlines for each gazette.**

**Please note that any notices cancelled after the cancellation deadline will be published and charged at full cost.**

Requests for cancellation must be sent by the original sender of the notice and must accompanied by the relevant notice reference number (N-) in the email body.

### AMENDMENTS TO NOTICES

take note!

With effect **from 01 October**, GPW will not longer accept amendments to notices. The cancellation process will need to be followed and a new notice submitted thereafter for the next available publication date.

### CUSTOMER INQUIRIES



Many of our customers request immediate feedback/confirmation of notice placement in the gazette from our Contact Centre once they have submitted their notice – While GPW deems it one of their highest priorities and responsibilities to provide customers with this requested feedback and the best service at all times, we are only able to do so once we have started processing your notice submission.

GPW has a **2-working day turnaround time for processing notices** received according to the business rules and deadline submissions.

Please keep this in mind when making inquiries about your notice submission at the Contact Centre.

### PROOF OF PAYMENTS

REMINDER

GPW reminds you that all notice submissions **MUST** be submitted with an accompanying proof of payment (PoP) or purchase order (PO). If any PoP's or PO's are received without a notice submission, it will be failed and your notice will not be processed.

When submitting your notice request to [submit.egazette@gpw.gov.za](mailto:submit.egazette@gpw.gov.za), please ensure that a purchase order (GPW Account customer) or proof of payment (non-GPW Account customer) is included with your notice submission. All documentation relating to the notice submission must be in a single email.

A reminder that documents must be attached separately in your email to GPW. (In other words, your email should have an Adobe Form plus proof of payment/purchase order – 2 separate attachments – where notice content is applicable, it should also be a 3rd separate attachment).

### REMINDER OF THE GPW BUSINESS RULES

- Single notice, single email – with proof of payment or purchase order.
- All documents must be attached separately in your email to GPW.
- 1 notice = 1 form, i.e. each notice must be on a separate form
- Please submit your notice **ONLY ONCE**.
- Requests for information, quotations and inquiries must be sent to the Contact Centre **ONLY**.
- The notice information that you send us on the form is what we publish. Please do not put any instructions in the email body.

**DISCLAIMER:**

Government Printing Works reserves the right to apply the 25% discount to all Legal and Liquor notices that comply with the business rules for notice submissions for publication in gazettes.

National, Provincial, Road Carrier Permits and Tender notices will pay the price as published in the Government Gazettes.

For any information, please contact the eGazette Contact Centre on 012-748 6200 or email [info.egazette@gpw.gov.za](mailto:info.egazette@gpw.gov.za)

**ADVERTISEMENT**

*Gazette*    *Page*  
*No.*        *No.*

**PROVINCIAL NOTICES • PROVINSIALE KENNISGEWINGS**

167	Local Government: Municipal Structures Act (117/1998): Municipal Demarcation Board: Delimitation of municipal wards: (EC129) .....	3547	4
167	Wet Op Plaaslike Regering: Munisipale Strukture (117/1998): Munisipale Afbakeningsraad: Afbakening van munisipale wyke: (EC129).....	3547	5

---

**PROVINCIAL NOTICES • PROVINSIALE KENNISGEWINGS**

---

**PROVINCIAL NOTICE 167 OF 2015****MUNICIPAL DEMARCATION BOARD : DELIMITATION OF  
MUNICIPAL WARDS IN TERMS OF THE LOCAL  
GOVERNMENT : MUNICIPAL STRUCTURES ACT, 1998.****EC129**

In terms of Item 5 (1) of Schedule 1 to the Local Government: Municipal Structures Act, 1998 (Act No. 117 of 1998) (the Act) the Municipal Demarcation Board hereby publishes its delimitation of wards for the above-mentioned municipality. Particulars of the delimitation are listed in the Schedule.

In terms of Item 5 (2) of Schedule 1 to the Act, any person aggrieved by the delimitation may, within 14 days of publication of this notice, submit objections in writing to:

The Municipal Demarcation Board  
Private Bag X123  
Centurion  
0046

Fax: 086 5248643  
Email: wards@demarcation.org.za

The attached form MDB 5 must please be used to object. The form is also available on [www.demarcation.org.za](http://www.demarcation.org.za)

**MS JANE THUPANA  
CHAIRPERSON: MUNICIPAL DEMARCATION BOARD****SCHEDULE**

In terms of section 18(3) of the Local Government: Municipal Structures Act, 1998 ( Act 117 of 1998), the MEC responsible for local government has determined that the municipal council consists of 46 councillors.

After having consulted the Independent Electoral Commission, The Municipal Demarcation Board has delimited the municipality into 23 wards in terms of Schedule 1 of the Act.

The number of registered voters in each ward does not vary by more than fifteen percent from the norm. The norm was determined by dividing the total number of voters on the municipal segment of the national common voters roll, namely 82308 voters on 5 March 2014, by the number of wards in the municipality.

An overview map of the boundary of the municipality, with the boundaries of the wards within the municipality, and a map of each ward are attached. In case of a discrepancy between the map and this schedule, the map will prevail. The ward numbers, the voting districts and voting stations in each ward, and the number of voters are as follows:



**PROVINSIALE KENNISGEWING 167 VAN 2015****MUNISIPALE AFBAKENINGSRAAD :  
AFBAKENING VAN MUNISIPALE WYKE INGEVOLGE DIE WET OP  
PLAASLIKE REGERING: MUNISIPALE STRUKTURE, 1998****EC129**

Ingevolge Item 5(1) van Bylae 1 van die Wet op Plaaslike Regering: Munisipale Strukture, 1998 (Wet No. 117 van 1998) ( die Wet ) publiseer die Munisipale Afbakeningsraad hiermee sy afbakening van wyke vir die bogenaaamde munisipaliteit. Besonderhede van die afbakening is vervat in die Bylae.

Ingevolge item 5(2) van Bylae 1 van die Wet, kan enige persoon wat gegrief is deur 'n afbakening binne 14 dae vanaf publikasie van hierdie kennisgewing skriftelike besware voorlê aan:

Die Munisipale Afbakeningsraad  
Privaatsak X123  
Centurion  
0046

Faks: 086 5248643  
E-pos: wards@demarcation.org.za

Die aangehegte vorm MDB5 moet asseblief gebruik word om beswaar aan te teken. Die vorm is ook beskikbaar op [www.demarcation.org.za](http://www.demarcation.org.za)

**MS JANE THUPANA  
VOORSITTER : MUNISIPALE AFBAKENINGSRAAD****BYLAE**

Ingevolge artikel 18(3) van die Wet op Plaaslike Regering: Munisipale Strukture, 1998 (Wet 117 van 1998) het die LUR vir plaaslike regering bepaal dat die munisipale raad bestaan uit 46 raadslede.

Na oorlegpleging met die Onafhanklike Verkiesingskommissie het die Munisipale Afbakeningsraad die munisipaliteit in 23 wyke afgebaken ingevolge Bylae 1 van die Wet.

Die getal geregistreerde kiesers in elke wyk, wyk nie meer as vyftien persent van die norm af nie. Die norm is bepaal deur die getal geregistreerde kiesers op die munisipale segment van die nasionale gemeenskaplike kieserslys, naamlik 82308 kiesers op 5 Maart 2014, deur die getal wyke in die munisipaliteit te deel.

'n Oorsigkaart van die munisipale grens met die grense van die wyke binne die munisipale grens, en 'n kaart van elke wyk, is aangeheg. Ingeval van 'n verskil tussen 'n kaart en hierdie bylae, sal die kaart geld.

Die wyknommers, die stemdistrikte en stemlokale in elke wyk, en die getal kiesers is as volg:

**Ward 1** comprises of a total of 3105 registered voters.  
**Wyk 1** bestaan uit 'n totaal van 3105 geregistreerde kiesers.  
 MIN VOTERS/KIESER 3042 NORM 3579 MAX VOTERS/KIESER 4116

VOTING DISTRICT No. STEMDISTRIK No.	VOTING STATION NAME STEMLOKAAL NAAM	NUMBER OF VOTERS GETAL KIESERS	SPLIT VD VERDEELDE SD
10890389	NDINDWA COMBINED SCHOOL	306	
10890222	QAMDOBOWA PRIMARY SCHOOL	334	
10890277	SABANE LOWER/HIGHER PRIMARY SCHOOL	702	
10890288	ZIGODLO LOWER/HIGHER PRIMARY SCHOOL	509	
10890187	MGXOTYENI LOWER/HIGHER PRIMARY SCHOOL	383	
10890233	MNQABA LOWER/HIGHER PRIMARY SCHOOL	362	
10890200	XHUKWANE LOWER/HIGHER PRIMARY SCHOOL	509	

**Ward 2** comprises of a total of 3258 registered voters.  
**Wyk 2** bestaan uit 'n totaal van 3258 geregistreerde kiesers.  
 MIN VOTERS/KIESER 3042 NORM 3579 MAX VOTERS/KIESER 4116

VOTING DISTRICT No. STEMDISTRIK No.	VOTING STATION NAME STEMLOKAAL NAAM	NUMBER OF VOTERS GETAL KIESERS	SPLIT VD VERDEELDE SD
10950061	IMINGLANGATHELO HIGH SCHOOL	919	
10550012	EYETHU COMMUNITY HALL Ntselamanzi	2339	

**Ward 3** comprises of a total of 3934 registered voters.  
**Wyk 3** bestaan uit 'n totaal van 3934 geregistreerde kiesers.  
 MIN VOTERS/KIESER 3042 NORM 3579 MAX VOTERS/KIESER 4116

VOTING DISTRICT No. STEMDISTRIK No.	VOTING STATION NAME STEMLOKAAL NAAM	NUMBER OF VOTERS GETAL KIESERS	SPLIT VD VERDEELDE SD
10600030	WASHINGTON BONCO LIBRARY	2095	
10600074	CAPE COLLEGE	614	
10950117	GOBIZEMBE HIGH SCHOOL	692	
10600096	NQABA LOWER PRIMARY SCHOOL	533	

**Ward 4** comprises of a total of 3217 registered voters.  
**Wyk 4** bestaan uit 'n totaal van 3217 geregistreerde kiesers.  
 MIN VOTERS/KIESER 3042 NORM 3579 MAX VOTERS/KIESER 4116

VOTING DISTRICT No. STEMDISTRIK No.	VOTING STATION NAME STEMLOKAAL NAAM	NUMBER OF VOTERS GETAL KIESERS	SPLIT VD VERDEELDE SD
10900033	LUSHINGTON PRIMARY SCHOOL	431	
10900112	HERTZOG	178	
10720011	JEANETT MAHONGA PRIMARY SCHOOL	1177	

10900123	TAMBOKIESVLEI	251
10900088	MASAKHANE STORES	296
11120016	CRAB-BUSH	625
10900077	AMHERST	259

**Ward 5** comprises of a total of 3205 registered voters.  
**Wyk 5** bestaan uit 'n totaal van 3205 geregistreerde kiesers.

MIN VOTERS/KIESER 3042 NORM 3579 MAX VOTERS/KIESER 4116

VOTING DISTRICT No. STEMDISTRIK No.	VOTING STATION NAME STEMLOKAAL NAAM	NUMBER OF VOTERS GETAL KIESERS	SPLIT VD VERDEELDE SD
10950106	ROXENI CHURCH HALL	193	
10950308	MAVUSO PRIMARY SCHOOL	569	
10950094	MPAMBANIMZIMBA HIGH SCHOOL	1028	
10950083	MASIVUYE LOWER PRIMARY SCHOOL	868	
10950230	EDIKENI LOWER/HIGHER PRIMARY SCHOOL	547	

**Ward 6** comprises of a total of 3125 registered voters.  
**Wyk 6** bestaan uit 'n totaal van 3125 geregistreerde kiesers.

MIN VOTERS/KIESER 3042 NORM 3579 MAX VOTERS/KIESER 4116

VOTING DISTRICT No. STEMDISTRIK No.	VOTING STATION NAME STEMLOKAAL NAAM	NUMBER OF VOTERS GETAL KIESERS	SPLIT VD VERDEELDE SD
10550034	ALICE TOWN HALL	2152	
10550045	GOLF COURSE COMMUNITY HALL	973	

**Ward 7** comprises of a total of 3172 registered voters.  
**Wyk 7** bestaan uit 'n totaal van 3172 geregistreerde kiesers.

MIN VOTERS/KIESER 3042 NORM 3579 MAX VOTERS/KIESER 4116

VOTING DISTRICT No. STEMDISTRIK No.	VOTING STATION NAME STEMLOKAAL NAAM	NUMBER OF VOTERS GETAL KIESERS	SPLIT VD VERDEELDE SD
10830147	DALUXOLO PRIMARY SCHOOL	219	
10900055	MANKAZANA UCC PRIMARY SCHOOL	148	
10900145	PLATFORM COMMUNITY HALL	222	
10830013	LOWER BLANKWATER PRIMARY SCHOOL	540	
10830136	CIMEZILE	515	
10830068	WEZO PRIMARY SCHOOL	323	
10830125	NGCWENGXA PRIMARY SCHOOL	427	
10830057	HEALDTOWN COMPREHENSIVE SCHOOL	778	

**Ward 8** comprises of a total of 4041 registered voters.  
**Wyk 8** bestaan uit 'n totaal van 4041 geregistreerde kiesers.  
 MIN VOTERS/KIESER 3042 NORM 3579 MAX VOTERS/KIESER 4116

VOTING DISTRICT No. STEMDISTRIK No.	VOTING STATION NAME STEMLOKAAL NAAM	NUMBER OF VOTERS GETAL KIESERS	SPLIT VD VERDEELDE SD
10830046	TEMPORARY VOTING STATION (SPARKINGTON KIOSK	188	
10830158	MOUNT PLEASANT COM HALL	83	
10760071	YELLOWWOODS	71	
10600063	NEWTOWN LOCATION	1744	
10760048	WAGONSDRIFT	107	
10830024	RIETFONTEIN FARM	146	
10600052	FORT BEAUFORT MUNICIPALITY HALL	1573	
10760060	MOLWENI PRIVATE GAME RESERVE	38	
10830079	KLUKLU VOTING STATION (TEMPORARY)	91	

**Ward 9** comprises of a total of 3681 registered voters.  
**Wyk 9** bestaan uit 'n totaal van 3681 geregistreerde kiesers.  
 MIN VOTERS/KIESER 3042 NORM 3579 MAX VOTERS/KIESER 4116

VOTING DISTRICT No. STEMDISTRIK No.	VOTING STATION NAME STEMLOKAAL NAAM	NUMBER OF VOTERS GETAL KIESERS	SPLIT VD VERDEELDE SD
10900022	FAIRBAIRN PRIMARY SCHOOL	350	
11100148	KOLOMANI COMMUNITY HALL	500	
10900134	MAASDORP PRIMARY SCHOOL	300	
10900101	KATBERG FARM	287	
10900044	READSDALE PRIMARY SCHOOL	277	
10900011	BALFOUR COMMUNITY HALL	1159	
10900066	BUXTON PRIMARY SCHOOL	321	
10760059	POST RETIEF	176	
10780062	GLENTHORN	87	
10760015	WINTERBERG COUNTRY CLUB	224	

**Ward 10** comprises of a total of 3698 registered voters.  
**Wyk 10** bestaan uit 'n totaal van 3698 geregistreerde kiesers.  
 MIN VOTERS/KIESER 3042 NORM 3579 MAX VOTERS/KIESER 4116

VOTING DISTRICT No. STEMDISTRIK No.	VOTING STATION NAME STEMLOKAAL NAAM	NUMBER OF VOTERS GETAL KIESERS	SPLIT VD VERDEELDE SD
10950241	AMAKHUZE	553	

10890503	MDLANKOMO LOWER/HIGHER PRIMARY SCHOOL	116
10890020	ZIXINENE LOWER/HIGHER PRIMARY SCHOOL	556
10950162	BINFIELD PRIMARY SCHOOL	520
10950151	SOMPONDO PRIMARY SCHOOL	223
10950016	GEORGE MQALO HIGH SCHOOL	399
10890019	MHLAMBISO LOWER/HIGHER PRIMARY SCHOOL	396
10950027	SIYABONGA HIGH SCHOOL	935

**Ward 11** comprises of a total of 3342 registered voters.

**Wyk 11** bestaan uit 'n totaal van 3342 geregistreerde kiesers.

MIN VOTERS/KIESER 3042

NORM 3579

MAX VOTERS/KIESER 4116

VOTING DISTRICT No.	VOTING STATION NAME	NUMBER OF VOTERS	SPLIT VD
STEMDISTRIK No.	STEMLOKAAL NAAM	GETAL KIESERS	VERDEELDE SD
10950319	GUBURA	165	
10550023	FORT HARE GREAT HALL	3177	

**Ward 12** comprises of a total of 3801 registered voters.

**Wyk 12** bestaan uit 'n totaal van 3801 geregistreerde kiesers.

MIN VOTERS/KIESER 3042

NORM 3579

MAX VOTERS/KIESER 4116

VOTING DISTRICT No.	VOTING STATION NAME	NUMBER OF VOTERS	SPLIT VD
STEMDISTRIK No.	STEMLOKAAL NAAM	GETAL KIESERS	VERDEELDE SD
10950173	AMABHELE HIGH SCHOOL	486	
10950320	NCERA PRIMARY SCHOOL	264	
10950049	FESTILE SOGA PRIMARY SCHOOL	504	
10950252	MCFARLANE PRIMARY SCHOOL	187	
10950263	ELUKHANYISWENI	944	
10950274	GWALI LOWER PRIMARY SCHOOL	219	
10950296	MELANI COMMUNITY HALL	491	
10950038	IMPEY SIWISA SCHOOL	552	
10890514	DISHI	154	

**Ward 13** comprises of a total of 3198 registered voters.

**Wyk 13** bestaan uit 'n totaal van 3198 geregistreerde kiesers.

MIN VOTERS/KIESER 3042

NORM 3579

MAX VOTERS/KIESER 4116

VOTING DISTRICT No.	VOTING STATION NAME	NUMBER OF VOTERS	SPLIT VD
STEMDISTRIK No.	STEMLOKAAL NAAM	GETAL KIESERS	VERDEELDE SD
10890299	QIBIRA PRIMARY SCHOOL	432	
10890301	ZALAZE PRIMARY SCHOOL	216	

10890390	PAKAMA	138
10890143	THAMSANQA HIGH SCHOOL	615
10890154	ZWELIMJONGILE SENIOR SECONDARY SCHOOL	740
10890165	WASHINGTON LOWER/HIGHER PRIMARY SCHOOL	202
10890378	TYARA PRIMARY SCHOOL	379
10890402	NGQOLOWA PRIMARY SCHOOL	341
10890569	QOMFO	135

**Ward 14** comprises of a total of 3799 registered voters.  
**Wyk 14** bestaan uit 'n totaal van 3799 geregistreerde kiesers.  
 MIN VOTERS/KIESER 3042 NORM 3579 MAX VOTERS/KIESER 4116

VOTING DISTRICT No. STEMDISTRIK No.	VOTING STATION NAME STEMLOKAAL NAAM	NUMBER OF VOTERS GETAL KIESERS	SPLIT VD VERDEELDE SD
10890075	BILL GANTO PRIMARY SCHOOL	279	
10890255	MXUMBU PRIMARY SCHOOL	433	
10890536	INGWENYA PRIMARY SCHOOL	274	
10890525	SAKI	296	
10890435	KNAPSOPE	184	
10890413	SITYI COMBINED SCHOOL	429	
10890244	SAKI COMMUNITY HALL	279	
10890424	NTLANGANWENI JUNIOR PRIMARY SCHOOL	286	
10890110	NJWAXA PRIMARY SCHOOL	475	
10890446	BANZI	42	
10890121	MBIZANA LOWER/HIGHER PRIMARY SCHOOL	539	
10890132	JOSI-MARELA SENIOR SECONDARY SCHOOL	283	

**Ward 15** comprises of a total of 3911 registered voters.  
**Wyk 15** bestaan uit 'n totaal van 3911 geregistreerde kiesers.  
 MIN VOTERS/KIESER 3042 NORM 3579 MAX VOTERS/KIESER 4116

VOTING DISTRICT No. STEMDISTRIK No.	VOTING STATION NAME STEMLOKAAL NAAM	NUMBER OF VOTERS GETAL KIESERS	SPLIT VD VERDEELDE SD
10890053	NGQELE PRIMARY SCHOOL	695	
10890468	MXHAML I PRIMARY SCHOOL	179	
10890479	TYUTYUZA	216	
10890547	NGQELE(MASAKHE) CRECHE	308	
10890064	NANGU PRIMARY SCHOOL	848	
10950285	NCERZANTS I PRIMARY SCHOOL	236	

10950218	YAMALA PRIMARY SCHOOL	656
10950050	THULISILE LOWER PRIMARY FRANCES	510
10890031	VUKANI HIGH SCHOOL	263

<b>Ward 16</b>	<b>comprises of a total of 3922</b>	<b>registered voters.</b>
<b>Wyk 16</b>	<b>bestaan uit 'n totaal van 3922</b>	<b>geregistreerde kiesers.</b>
<b>MIN VOTERS/KIESER</b>	<b>3042</b>	<b>NORM 3579</b>
		<b>MAX VOTERS/KIESER 4116</b>

VOTING DISTRICT No. STEMDISTRIK No.	VOTING STATION NAME STEMLOKAAL NAAM	NUMBER OF VOTERS GETAL KIESERS	SPLIT VD VERDEELDE SD
10890042	MPHUMZI HIGH SCHOOL	431	
10890109	CWARU LOWER/HIGHER PRIMARY SCHOOL	831	
10890086	A.M TAPA SENIOR SECONDARY SCHOOL	896	
10890457	UPPER REGU	197	
10690017	MIDDLEDRIFT COMMUNITY HALL	820	
10890558	NGELE PRIMARY SCHOOL	297	
10890097	ANN SHAW COMMUNITY HALL	450	

<b>Ward 17</b>	<b>comprises of a total of 3631</b>	<b>registered voters.</b>
<b>Wyk 17</b>	<b>bestaan uit 'n totaal van 3631</b>	<b>geregistreerde kiesers.</b>
<b>MIN VOTERS/KIESER</b>	<b>3042</b>	<b>NORM 3579</b>
		<b>MAX VOTERS/KIESER 4116</b>

VOTING DISTRICT No. STEMDISTRIK No.	VOTING STATION NAME STEMLOKAAL NAAM	NUMBER OF VOTERS GETAL KIESERS	SPLIT VD VERDEELDE SD
10890176	BHONGWELIHLE PRIMARY SCHOOL	701	
10890198	SISEKO HIGH SCHOOL	306	
10890266	QANDA PRIMARY SCHOOL	337	
10890211	MAYIPASE PRIMARY SCHOOL	497	
10890312	ZIHLAHLENI LOWER/HIGHER PRIMARY SCHOOL	962	
10890334	NONGWANE PRIMARY SCHOOL	264	
10890345	NTONGA PRIMARY SCHOOL	299	
10890356	DAWUWA PRIMARY SCHOOL	265	

<b>Ward 18</b>	<b>comprises of a total of 3074</b>	<b>registered voters.</b>
<b>Wyk 18</b>	<b>bestaan uit 'n totaal van 3074</b>	<b>geregistreerde kiesers.</b>
<b>MIN VOTERS/KIESER</b>	<b>3042</b>	<b>NORM 3579</b>
		<b>MAX VOTERS/KIESER 4116</b>

VOTING DISTRICT No. STEMDISTRIK No.	VOTING STATION NAME STEMLOKAAL NAAM	NUMBER OF VOTERS GETAL KIESERS	SPLIT VD VERDEELDE SD
10950184	SISONKE LOWER PRIMARY SCHOOL	952	
10950140	SILPHUMILE PRIMARY SCHOOL	893	



10950195	EASTERN CAPE PARK BOARD	61
10950229	CEASER MLUMBI PRIMARY SCHOOL	267
10950139	LOKHWE VOTING STATION	383
10950128	DALUBUHLE HIGH SCHOOL	518

**Ward 19** comprises of a total of 3931 registered voters.  
**Wyk 19** bestaan uit 'n totaal van 3931 geregistreerde kiesers.

MIN VOTERS/KIESER 3042 NORM 3579 MAX VOTERS/KIESER 4116

VOTING DISTRICT No. STEMDISTRIK No.	VOTING STATION NAME STEMLOKAAL NAAM	NUMBER OF VOTERS GETAL KIESERS	SPLIT VD VERDEELDE SD
10600018	INYIBIBA PUBLIC SCHOOL	2254	
10600029	EYABANTU HIGH SCHOOL	1677	

**Ward 20** comprises of a total of 3144 registered voters.  
**Wyk 20** bestaan uit 'n totaal van 3144 geregistreerde kiesers.

MIN VOTERS/KIESER 3042 NORM 3579 MAX VOTERS/KIESER 4116

VOTING DISTRICT No. STEMDISTRIK No.	VOTING STATION NAME STEMLOKAAL NAAM	NUMBER OF VOTERS GETAL KIESERS	SPLIT VD VERDEELDE SD
10600041	HILLSIDE COMMUNITY HALL	1918	
10600085	TEPORARY VOTING STATION (JACARANDA DRIVE)	302	
10830035	LINDANI HIGH SCHOOL	924	

**Ward 21** comprises of a total of 3898 registered voters.  
**Wyk 21** bestaan uit 'n totaal van 3898 geregistreerde kiesers.

MIN VOTERS/KIESER 3042 NORM 3579 MAX VOTERS/KIESER 4116

VOTING DISTRICT No. STEMDISTRIK No.	VOTING STATION NAME STEMLOKAAL NAAM	NUMBER OF VOTERS GETAL KIESERS	SPLIT VD VERDEELDE SD
10540033	LINGELETHU COMMUNITY CENTRE	1506	
10540055	TOWN HALL ADELAIDE	713	
10540022	NOMAKHWEZI CLINIC	1679	

**Ward 22** comprises of a total of 4105 registered voters.  
**Wyk 22** bestaan uit 'n totaal van 4105 geregistreerde kiesers.

MIN VOTERS/KIESER 3042 NORM 3579 MAX VOTERS/KIESER 4116

VOTING DISTRICT No. STEMDISTRIK No.	VOTING STATION NAME STEMLOKAAL NAAM	NUMBER OF VOTERS GETAL KIESERS	SPLIT VD VERDEELDE SD
10760026	WALKERVALE	183	
10780051	FAIRHOLDT CHURCH	105	
10780017	EILDON	165	
10760093	NCEDULUNTU CRECHE	905	

10560035	MZAMOMHLE CLINIC	726	Y
10540066	AMAJINGQI HIGH SCHOOL	496	
10540011	BEZUIDENHOUTVILLE COMMUNITY CENTRE	1525	

**Ward 23** comprises of a total of 4116 registered voters.  
**Wyk 23** bestaan uit 'n totaal van 4116 geregistreerde kiesers.

MIN VOTERS/KIESER 3042

NORM 3579

MAX VOTERS/KIESER 4116

VOTING DISTRICT No. STEMDISTRIK No.	VOTING STATION NAME STEMLOKAAL NAAM	NUMBER OF VOTERS GETAL KIESERS	SPLIT VD VERDEELDE SD
10560046	ST JOSEPH HALL	662	
10560035	MZAMOMHLE CLINIC	1026	Y
10560024	MSOMBOMVU COMMUNITY HALL	1313	
10560013	BEDFORD TOWN HALL	1115	

**FORM/VORM MDB5**

**WARD DELIMITATION/**

**WYKSAFBAKENING**

**OBJECTION IN TERMS OF ITEM 5(2) OF SCHEDULE 1 TO THE LOCAL GOVERNMENT:  
MUNICIPAL STRUCTURES ACT, 1998**

**BESWAAR INGEVOLGE ITEM 5(2) VAN BYLAE 1 VAN DIE WET OP PLAASLIKE REGERING:  
MUNISIPALE STRUKTURE, 1998**

**Name of municipality/ Naam van Munisipaliteit :.....**

**Code/Kode :.....**

**Name of aggrieved person/institution/Naam van beswaarde persoon/instelling :  
.....**

**Contact person in case of an institution/ Kontak persoon in geval van 'n instelling:  
.....**

**Address/Adres:.....**

**Tel. number/ Tel. nommer:.....Cell number/ Selfoonnommer: .....**

**Email address:.....**

PLEASE USE ADDITIONAL PAGE SHOULD THE ALTERNATIVE PROPOSALS BE MORE THAN THE FOLLOWING SPACE AVAILABLE.

I request the Municipal Demarcation Board to consider the following alternative proposals/ Ek versoek die Munisipale Afbakeningsraad om die volgende alternatiewe voorstelle te oorweeg:



Ward number/ Wyk nommer	The ward should comprise of the following voting districts (Provide voting district number and the number of voters in brackets e.g. VD1123456(1500)+VD345678(2500)=4000)/  Die wyk moet bestaan uit die volgende stemdistrikte: (Voorsien die stemdistriknommer en die getal geregistreerde kiesers as volg VD1123456(1500)+VD345678(2500)=4000)	Motivation /Motivering

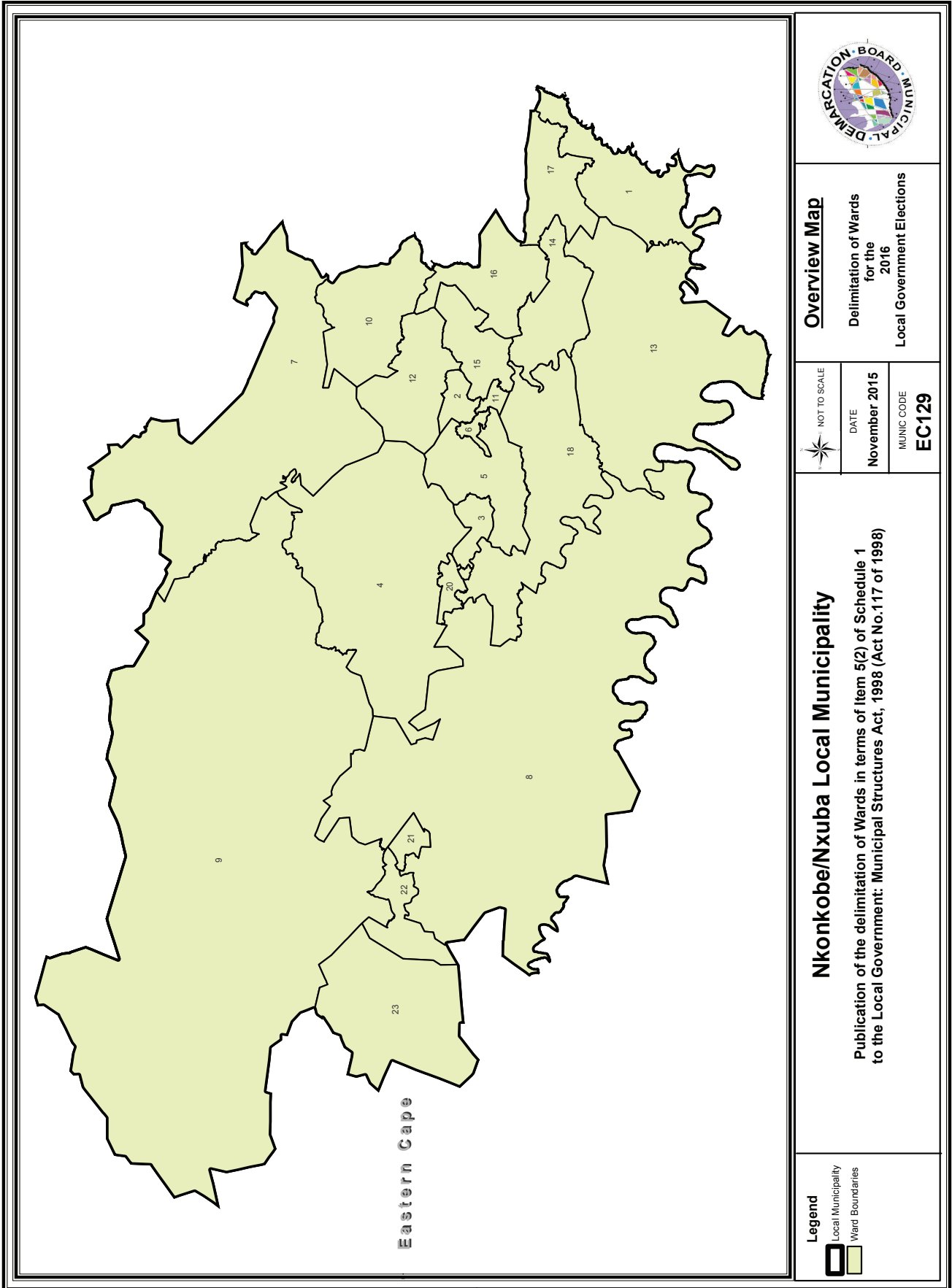
I confirm that/ Ek bevestig dat:

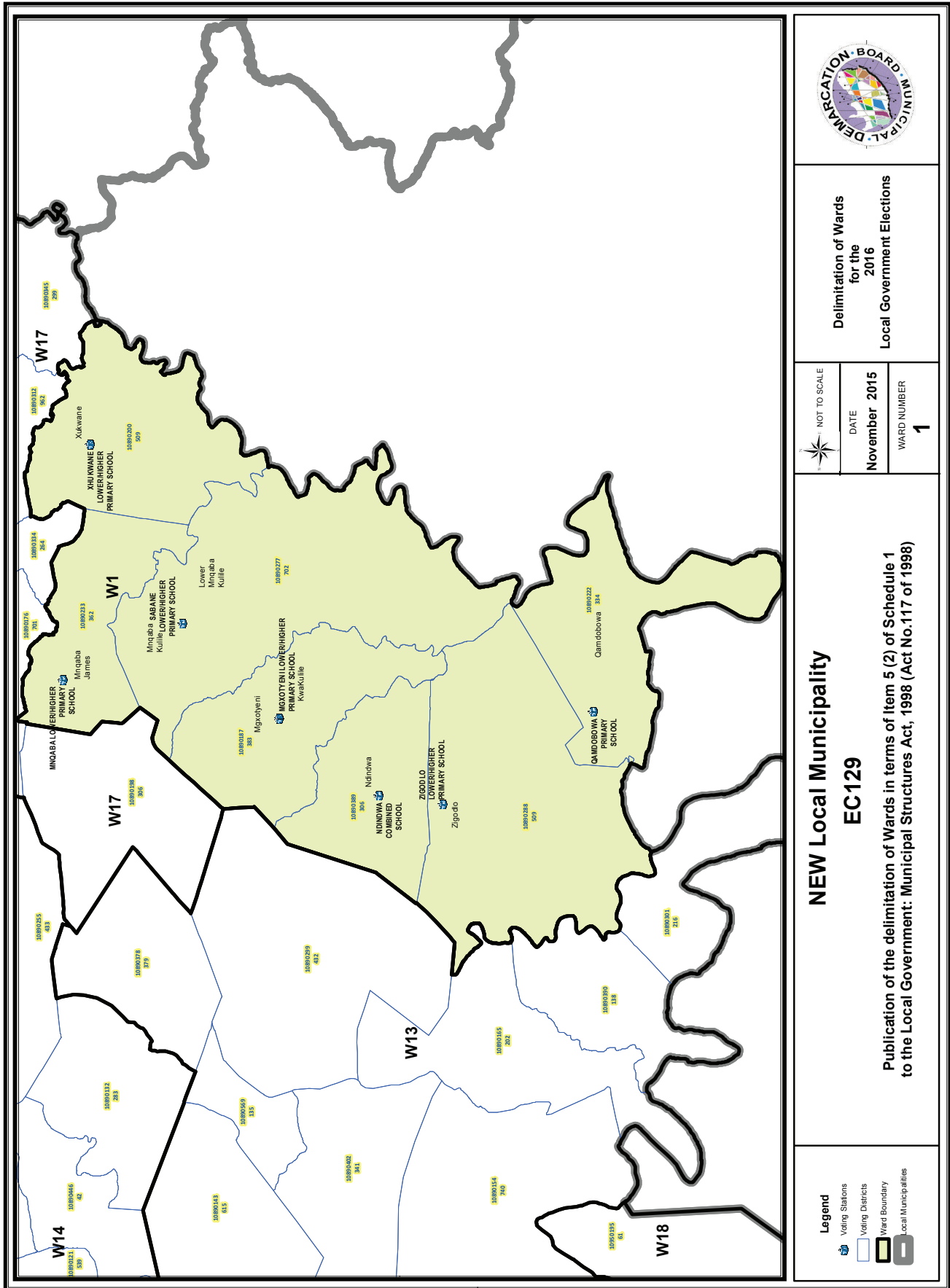
- each cluster of voting districts form a contiguous ward/ die saamgevoegde stemdistrikte vorm 'n aaneenlopende wyk;
- the number of voters in each ward fall within the minimum and maximum of voters allowed per ward/ die getal kiesers in elke wyk is binne die minimum en maksimum getal wat per wyk toegelaat word;
- the proposed ward boundaries comply, in general, with the criteria/ die voorgestelde wyke voldoen in die algemeen aan die kriteria.

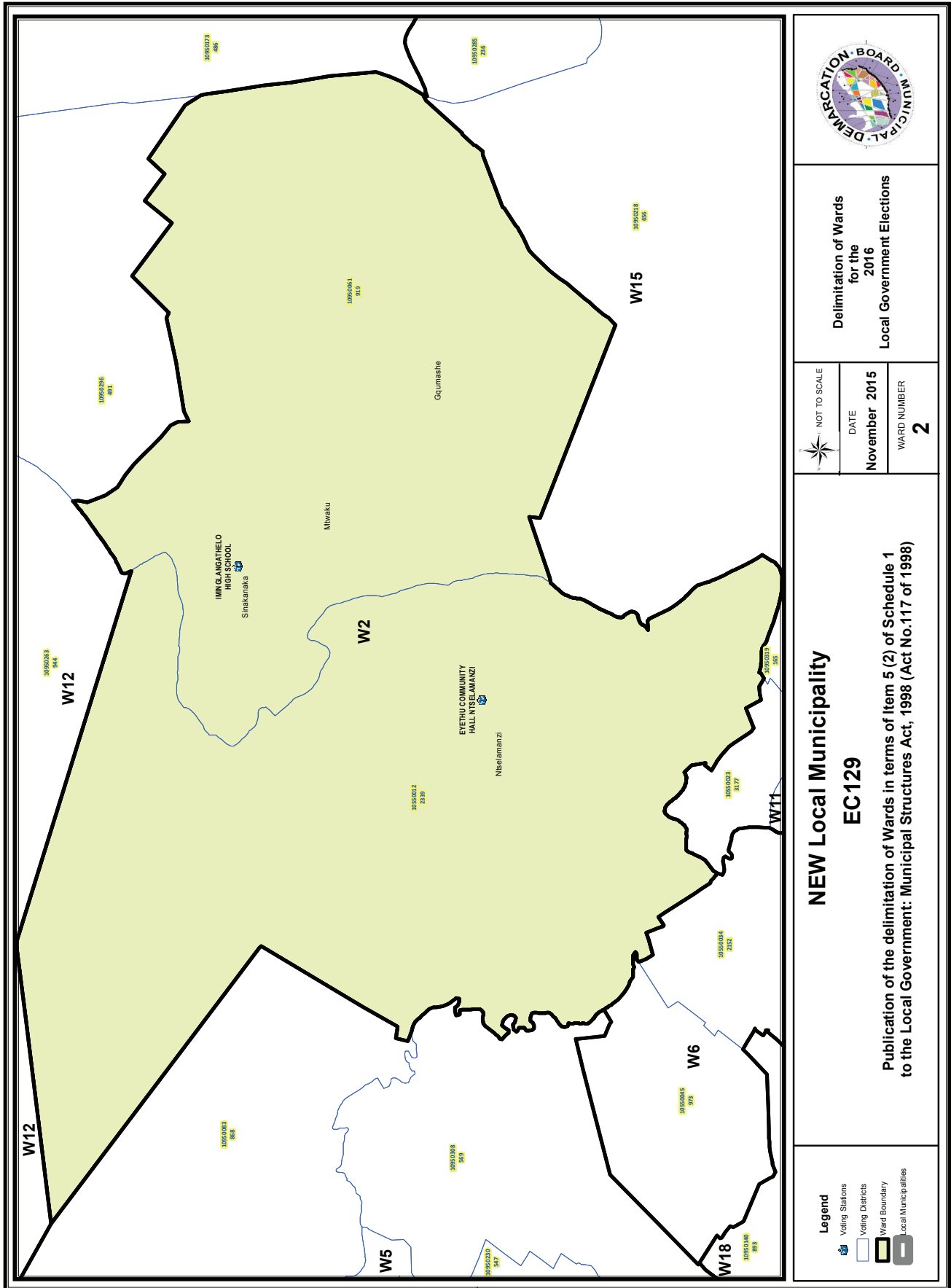
\_\_\_\_\_  
SIGNATURE

\_\_\_\_\_  
NAME AND SURNAME

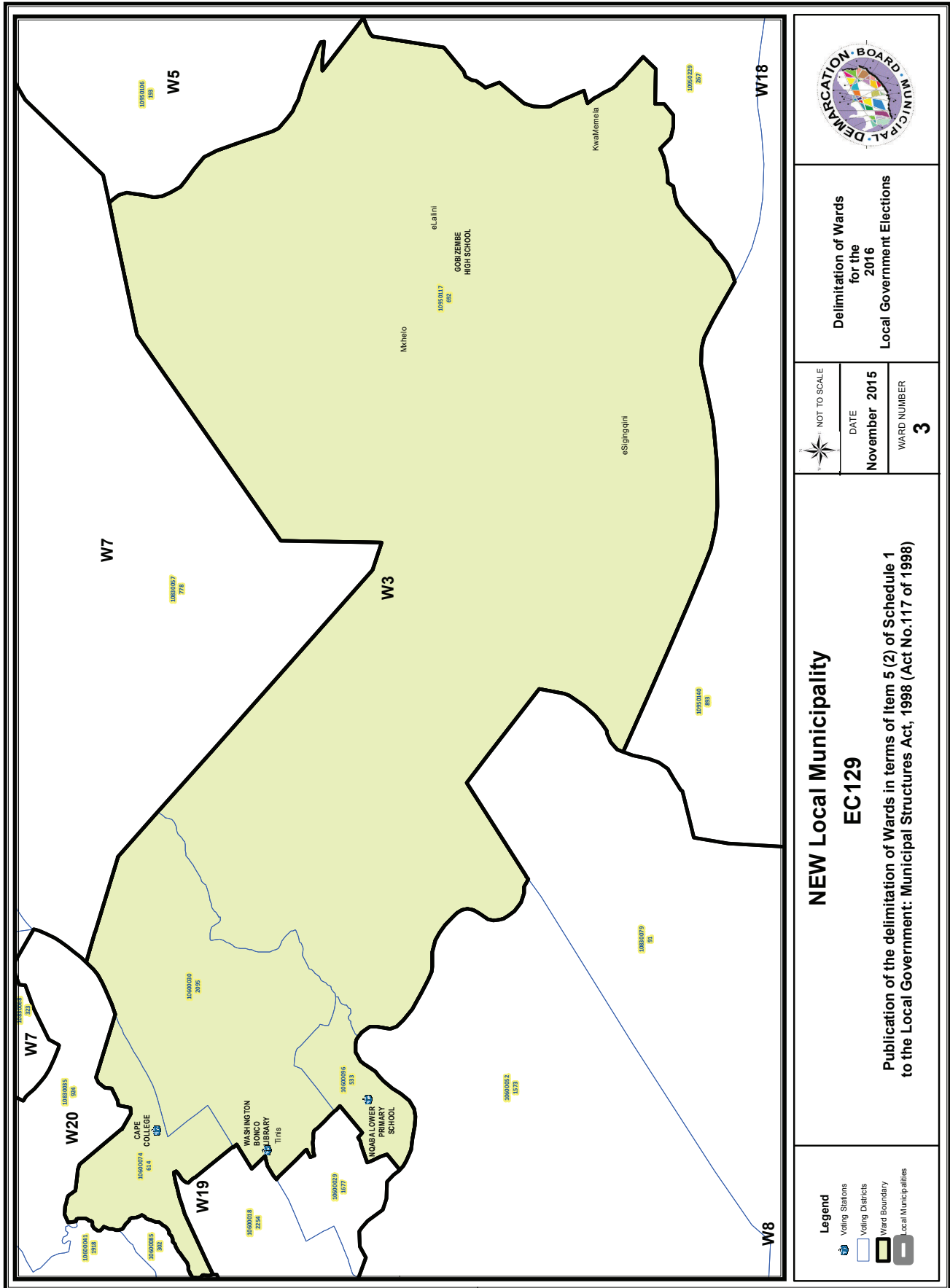
\_\_\_\_\_  
DATE

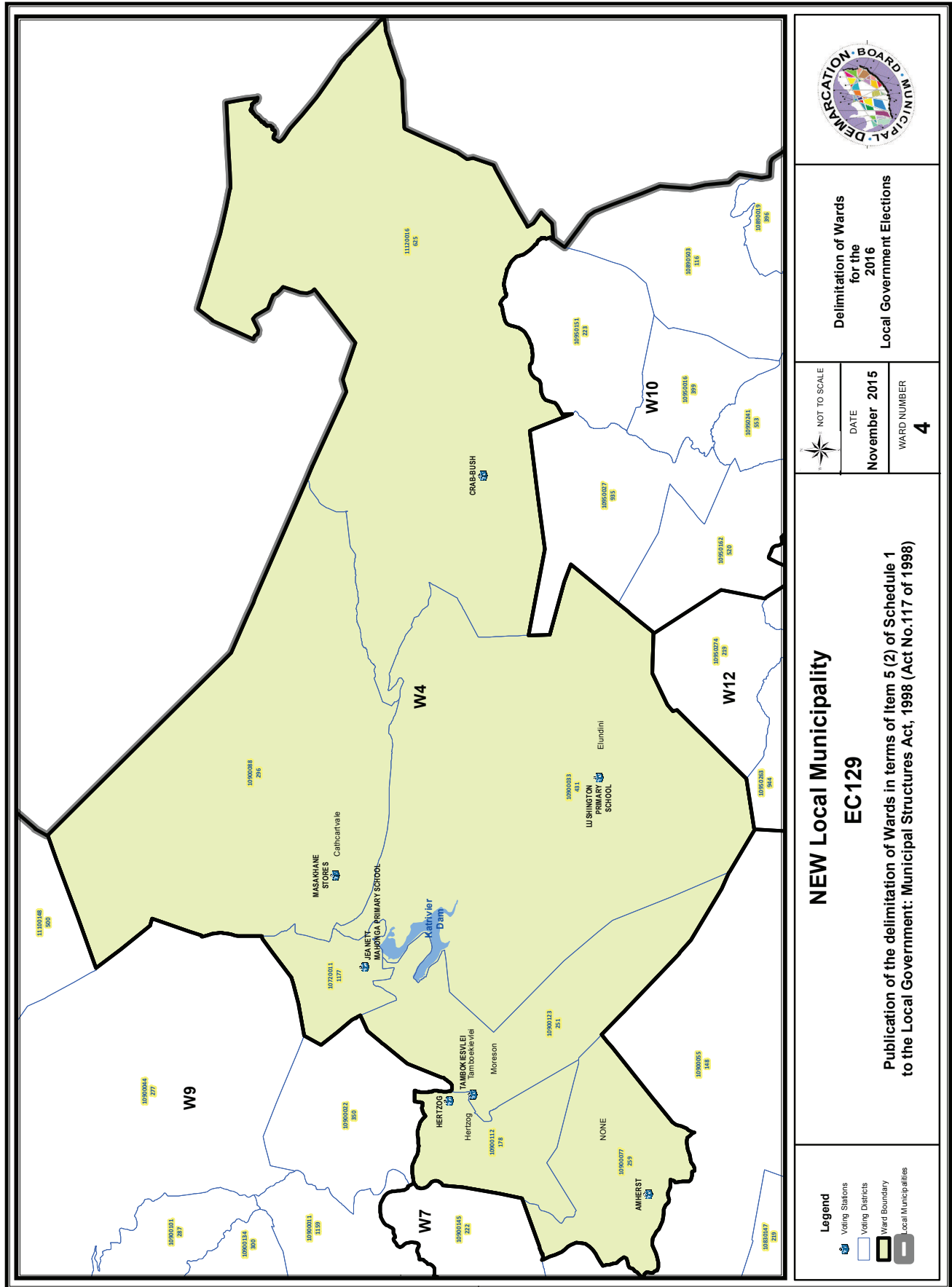


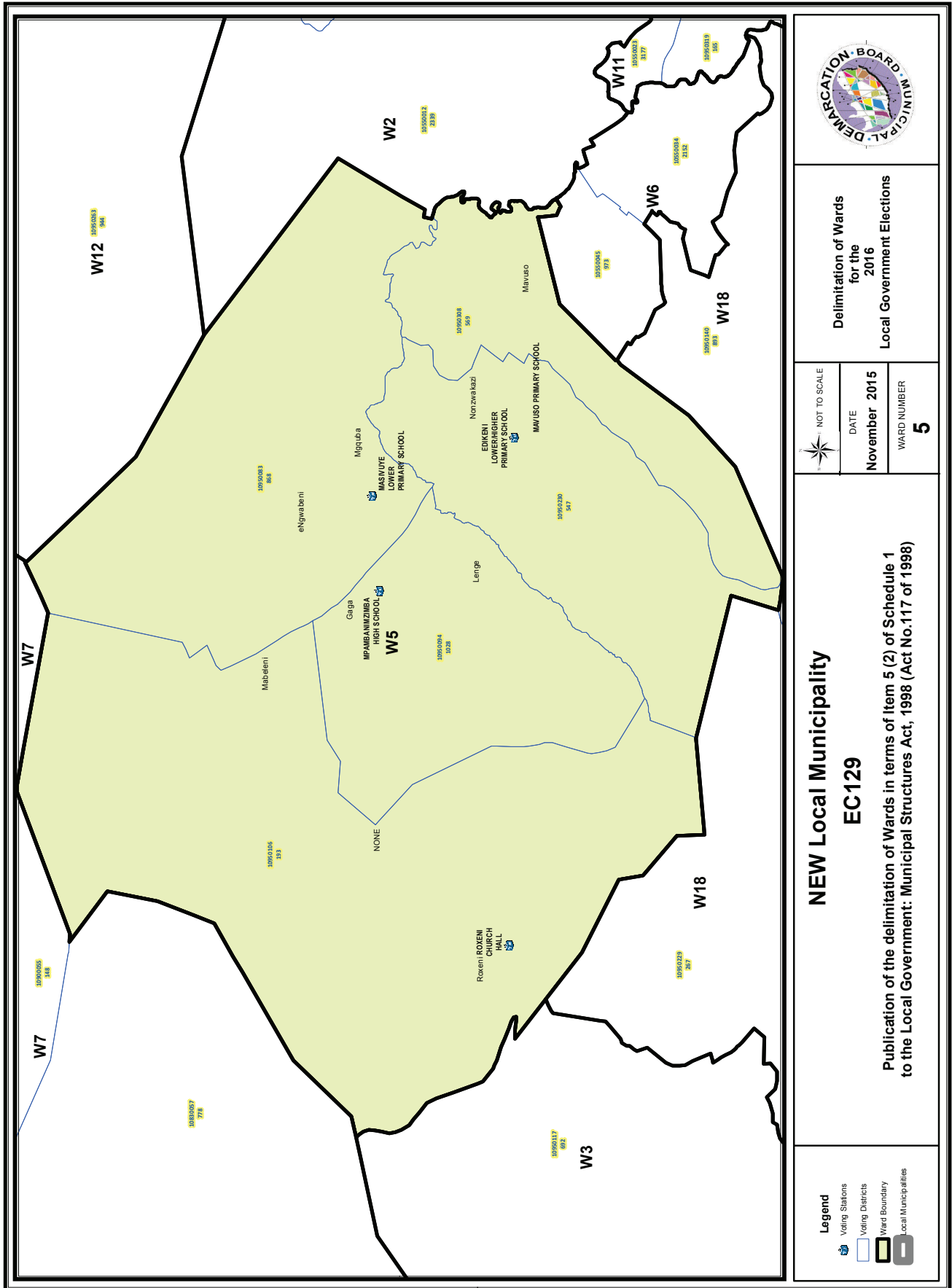


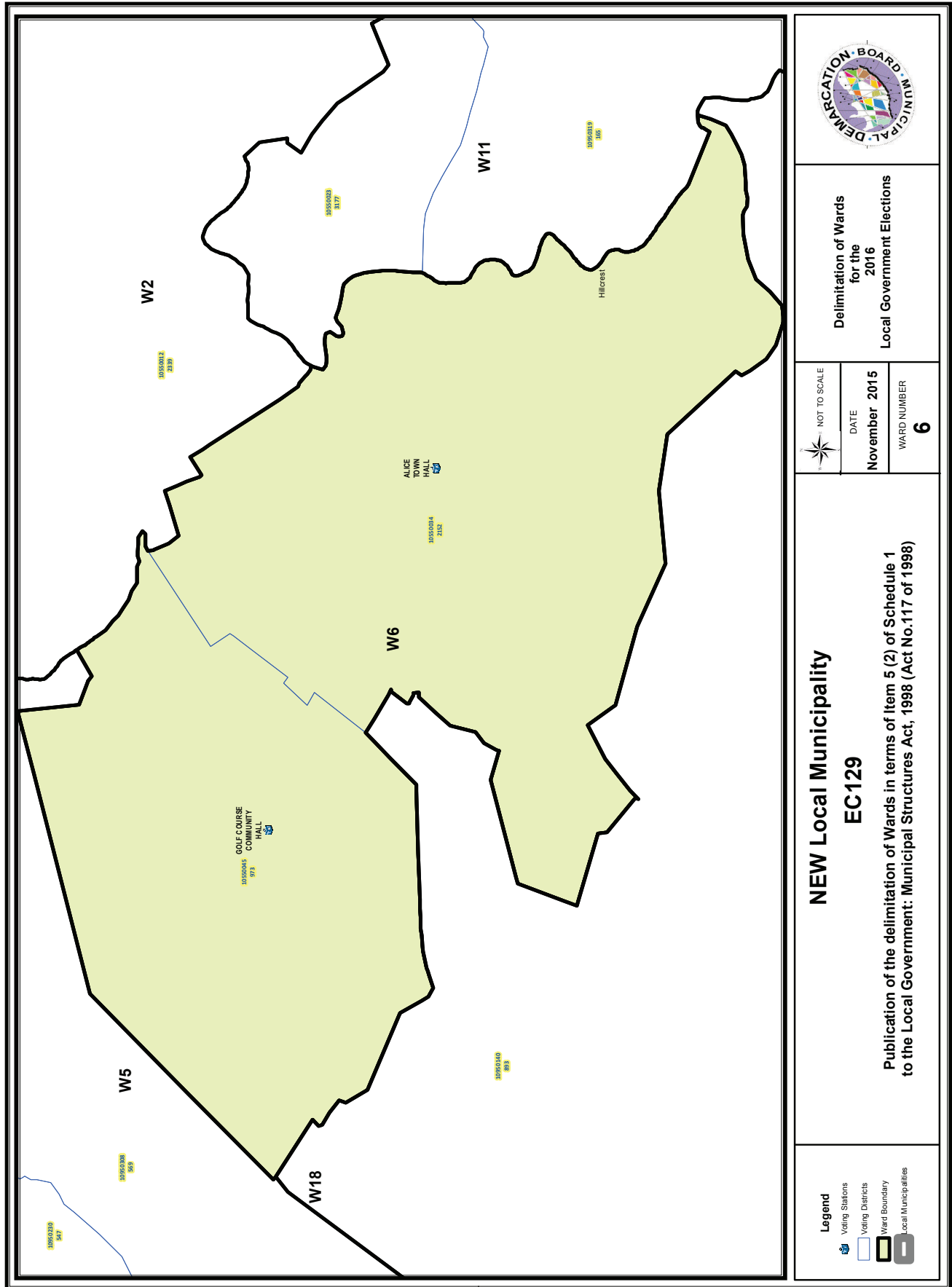


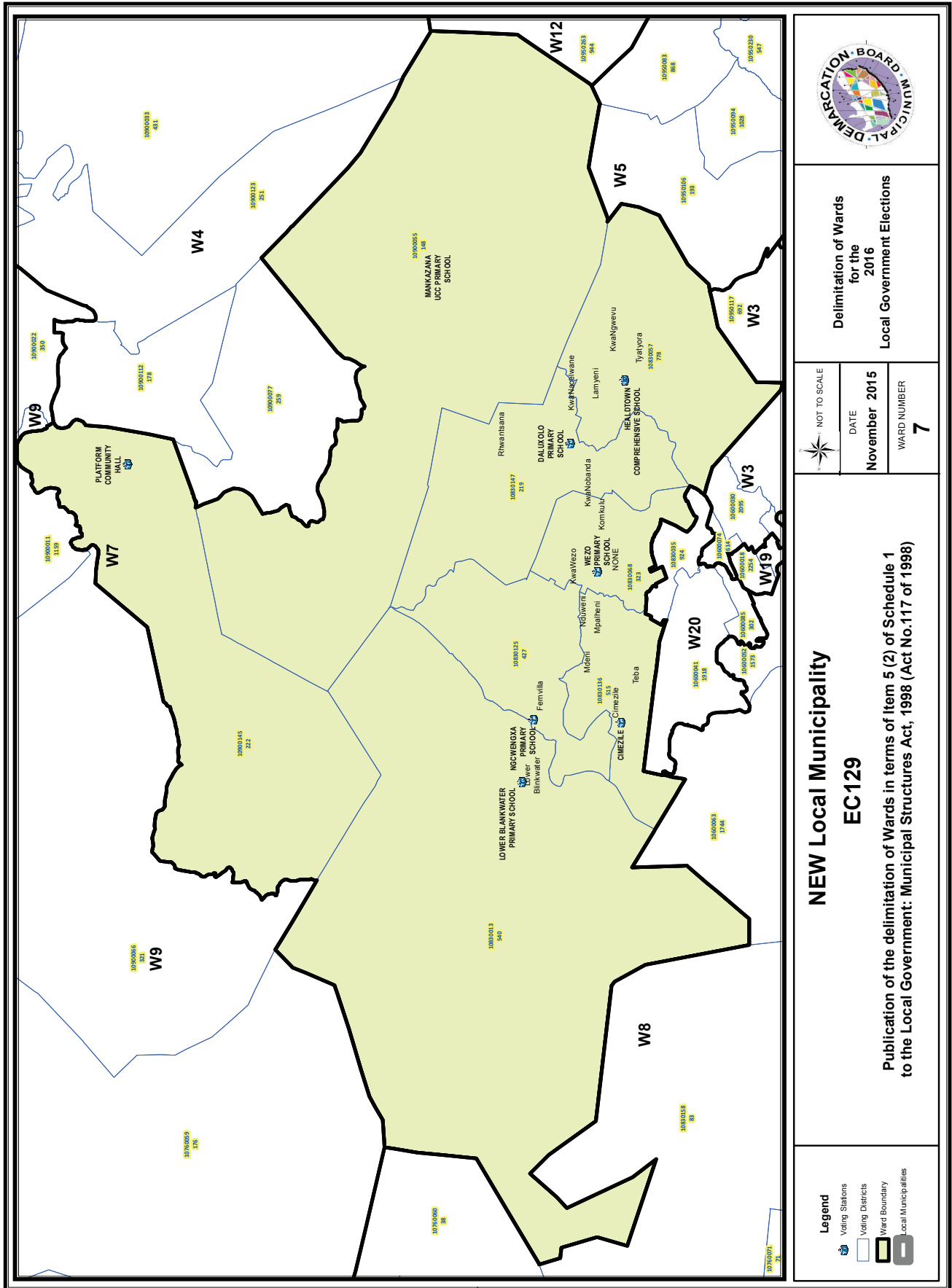


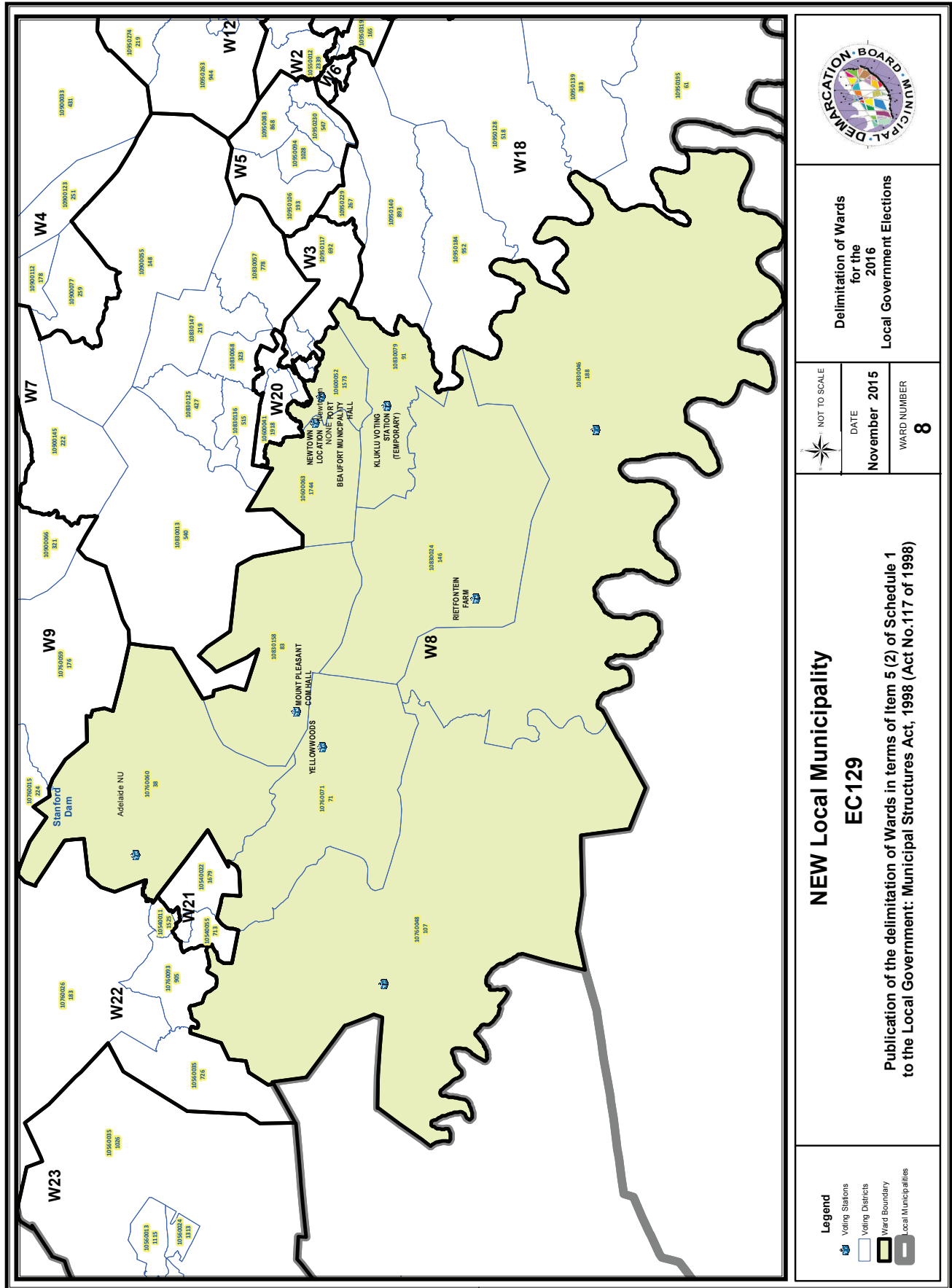


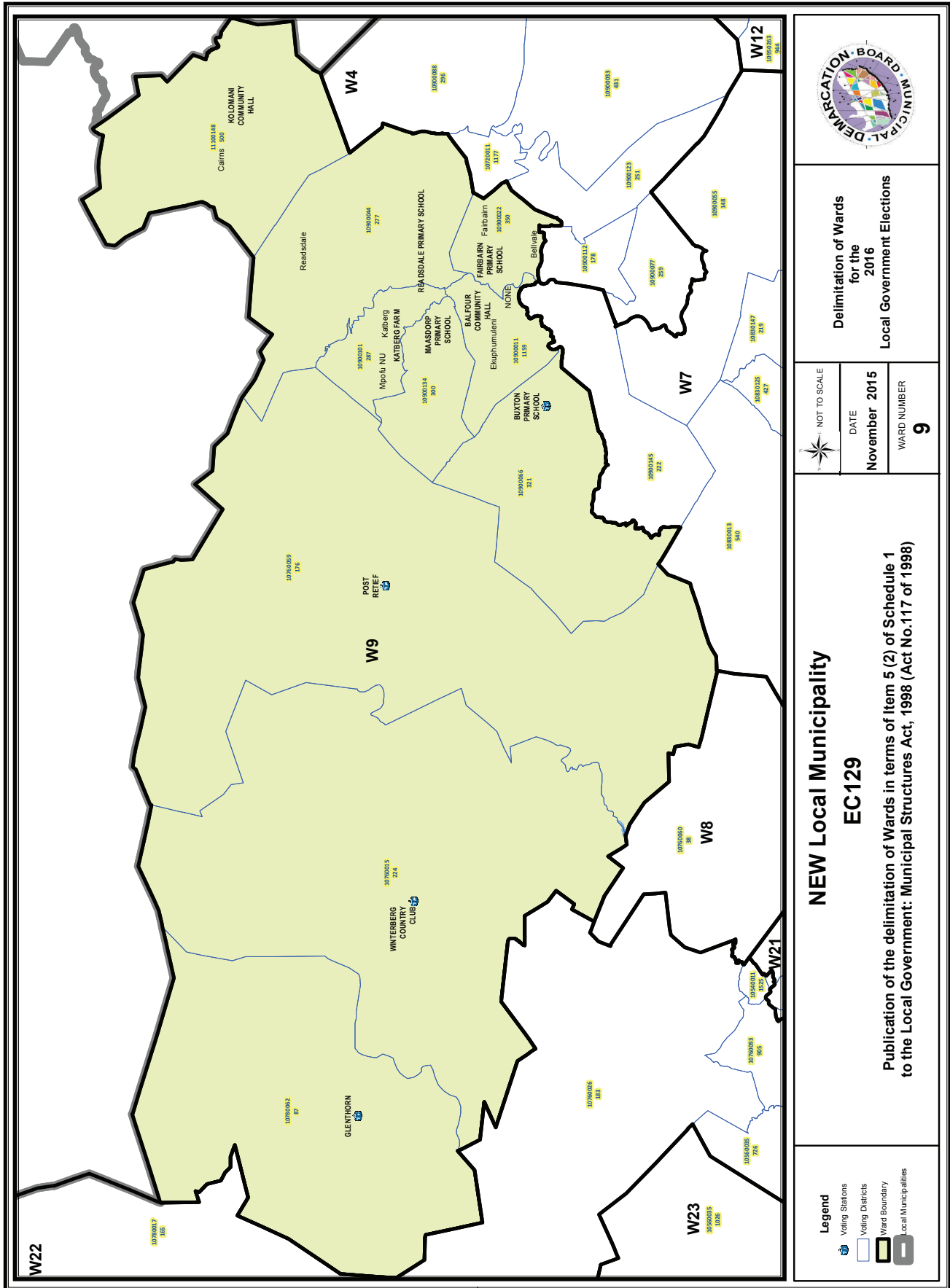




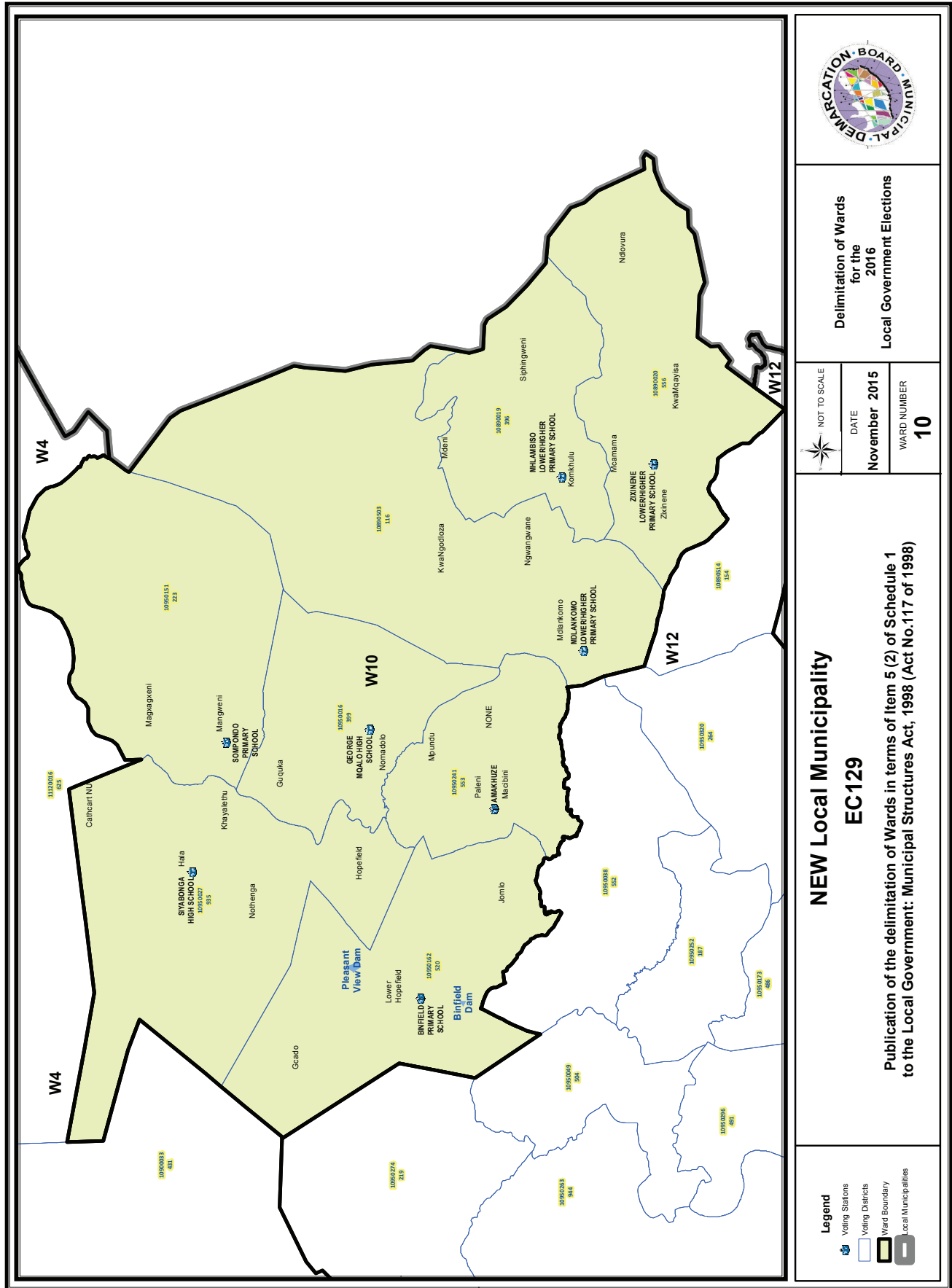


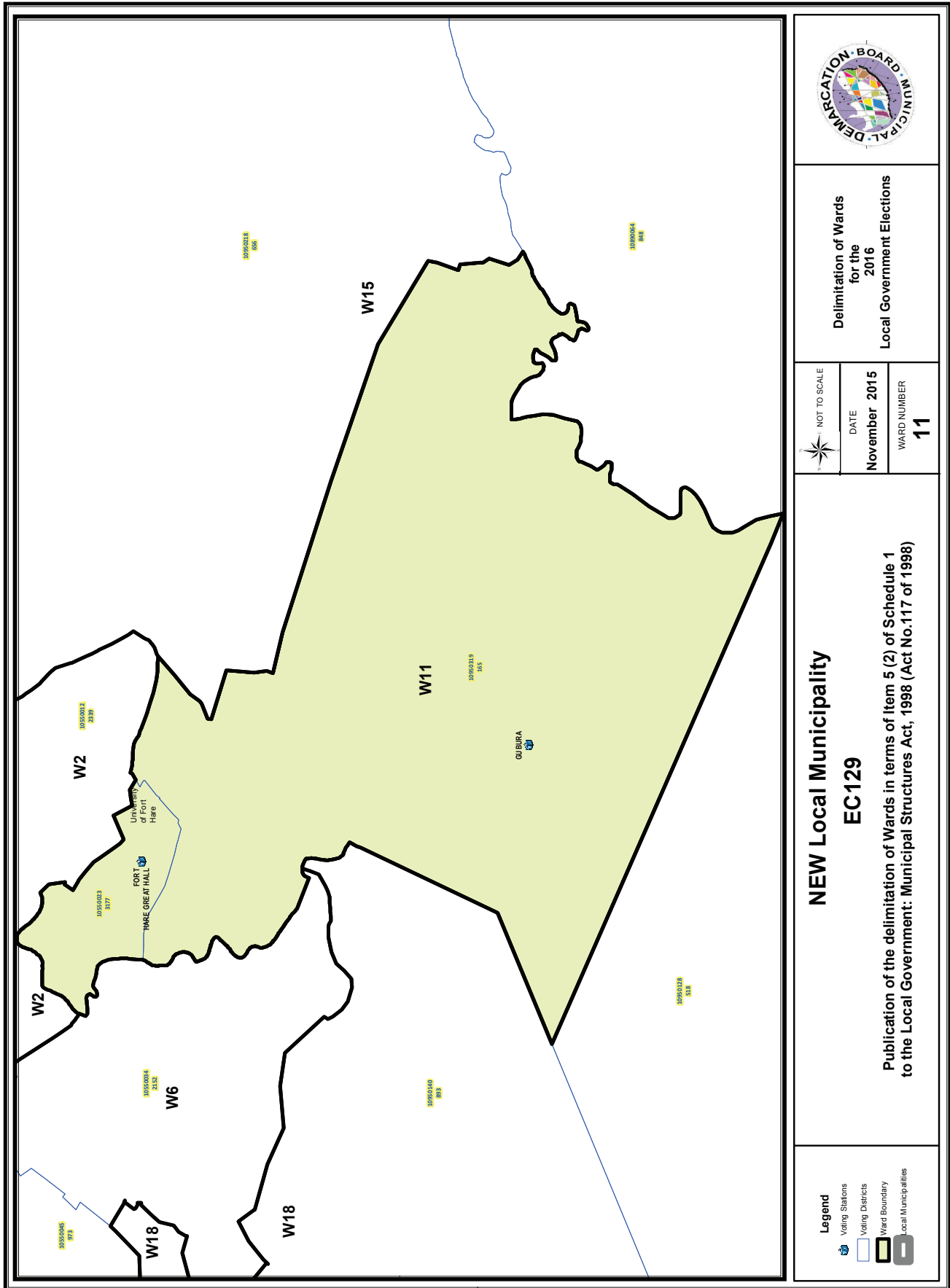


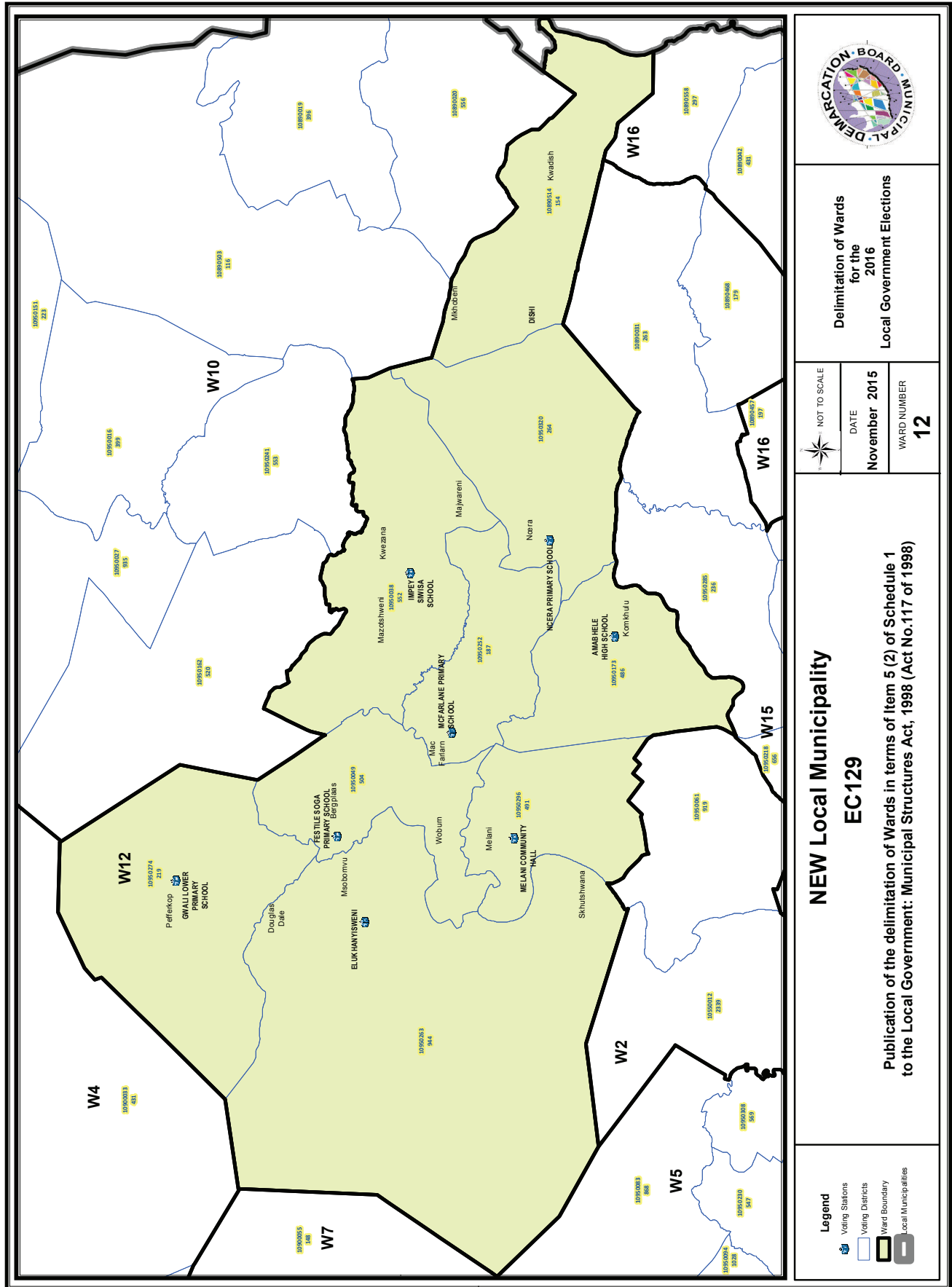


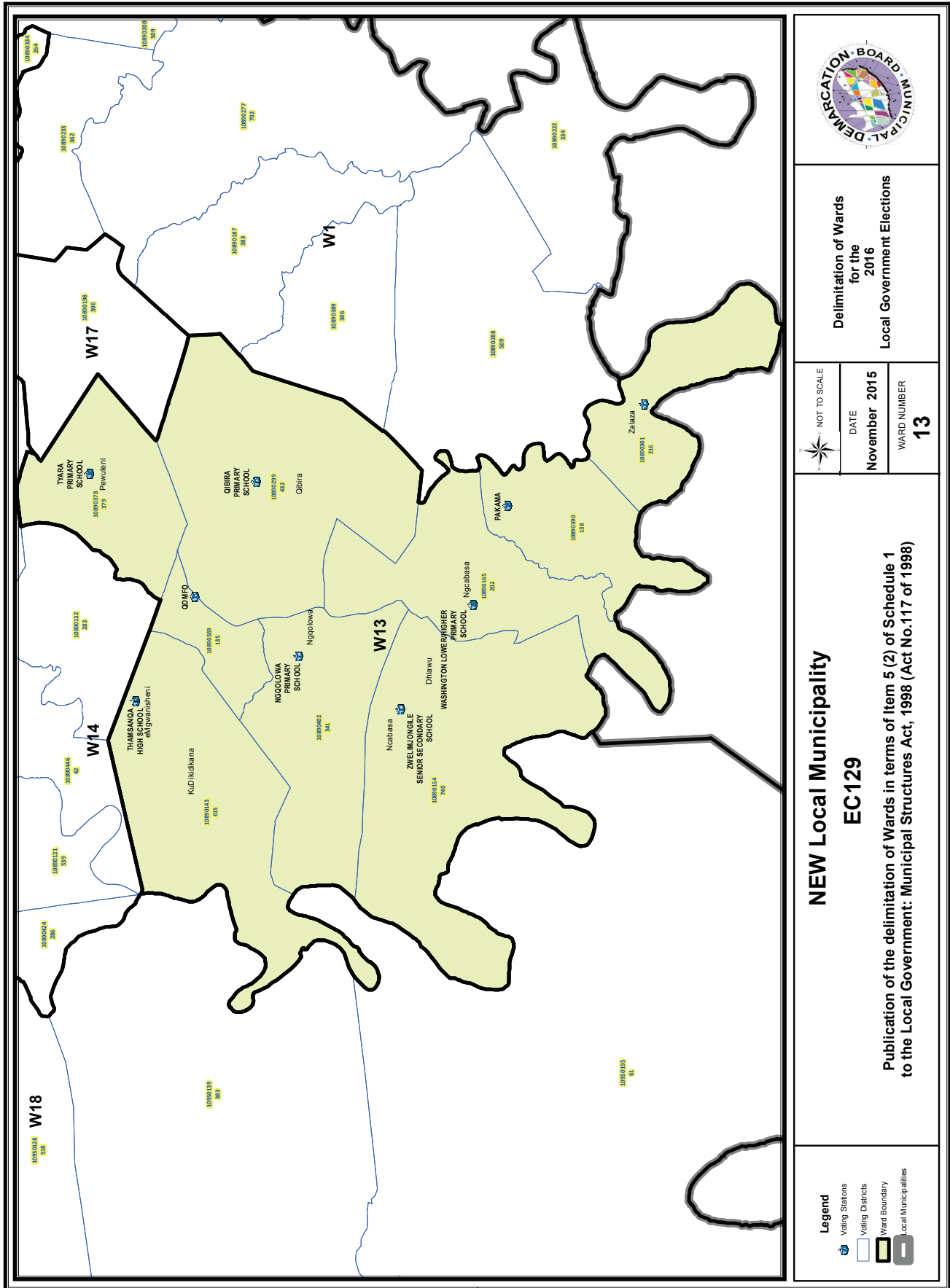


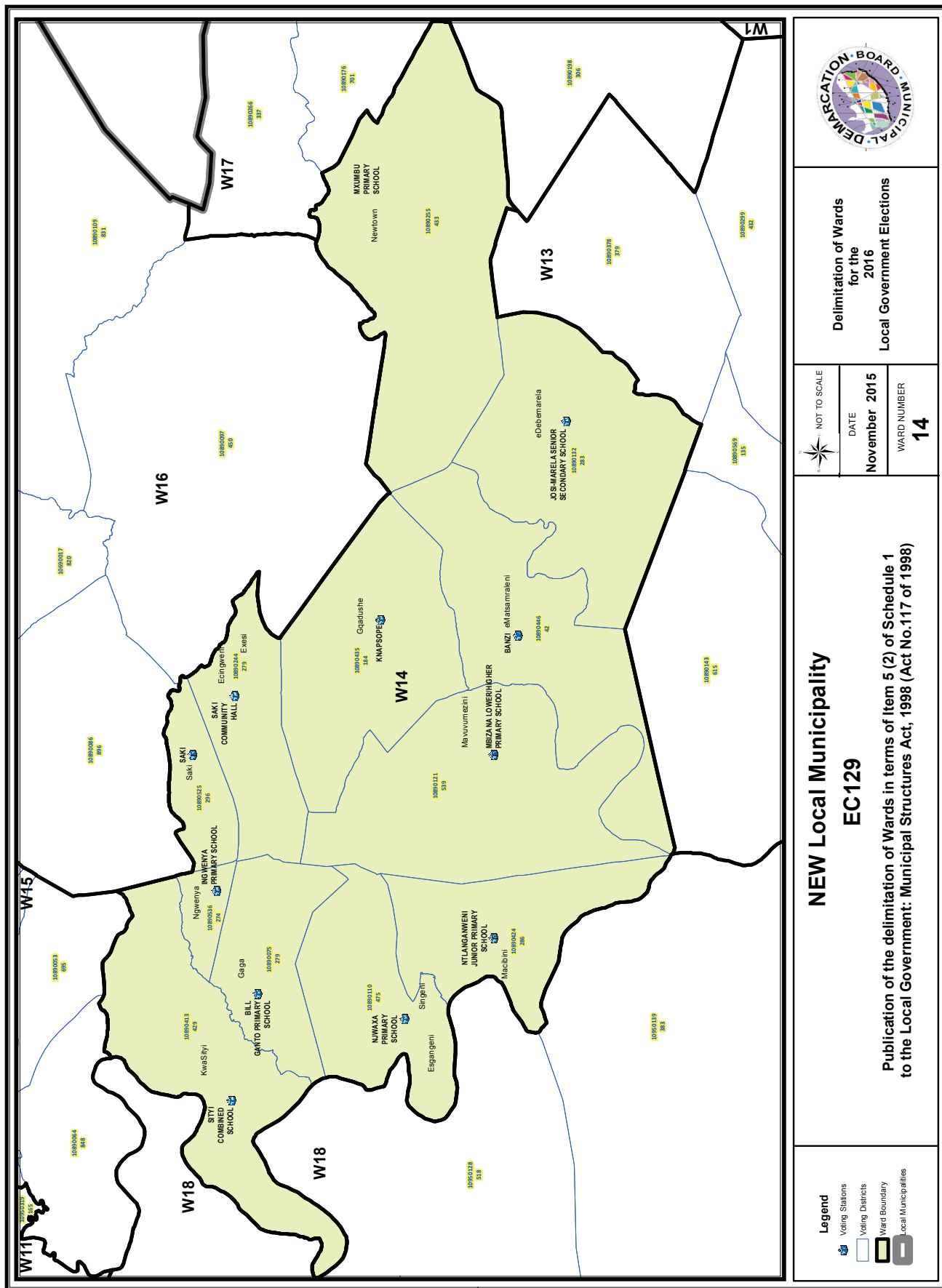


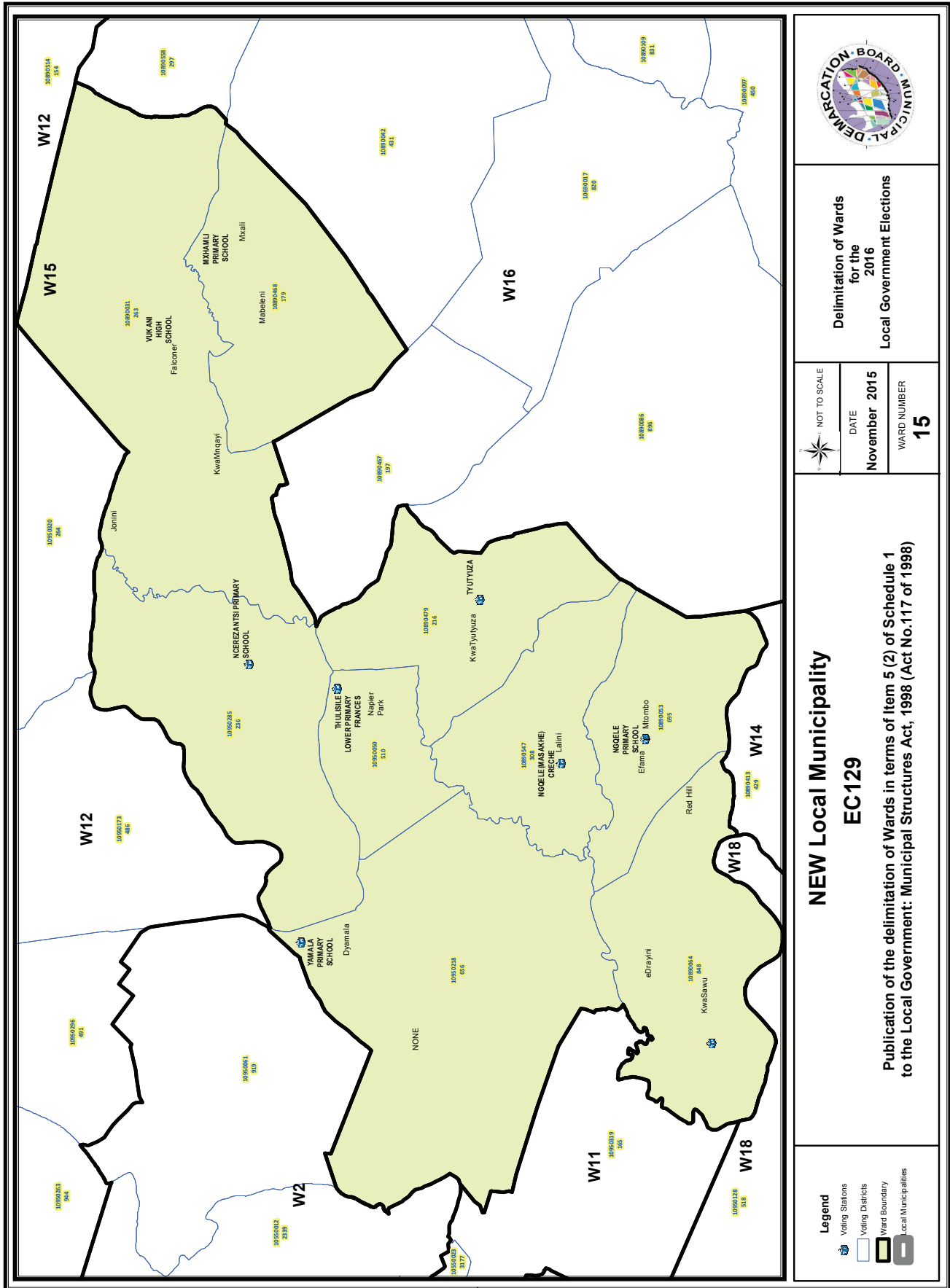


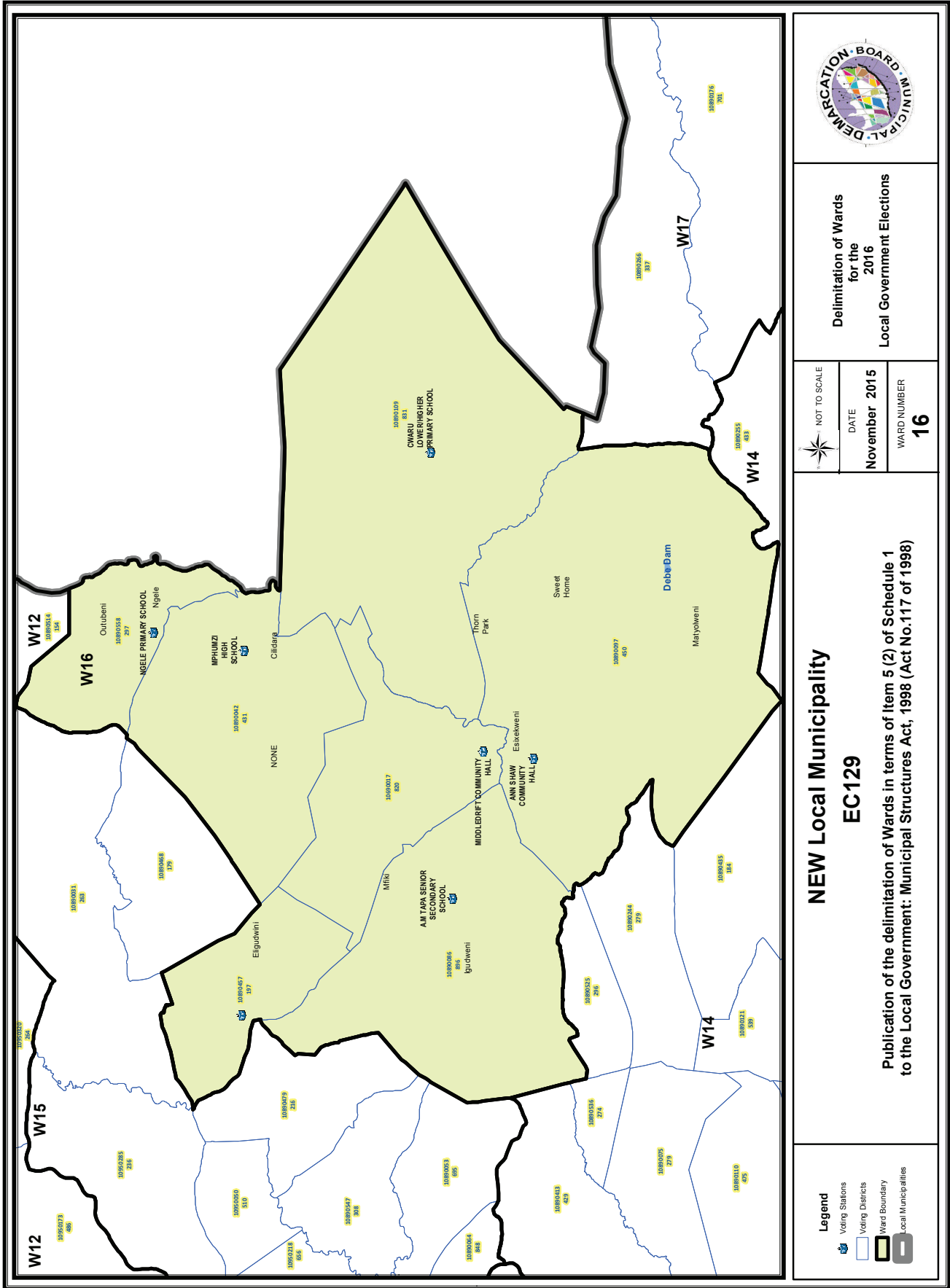




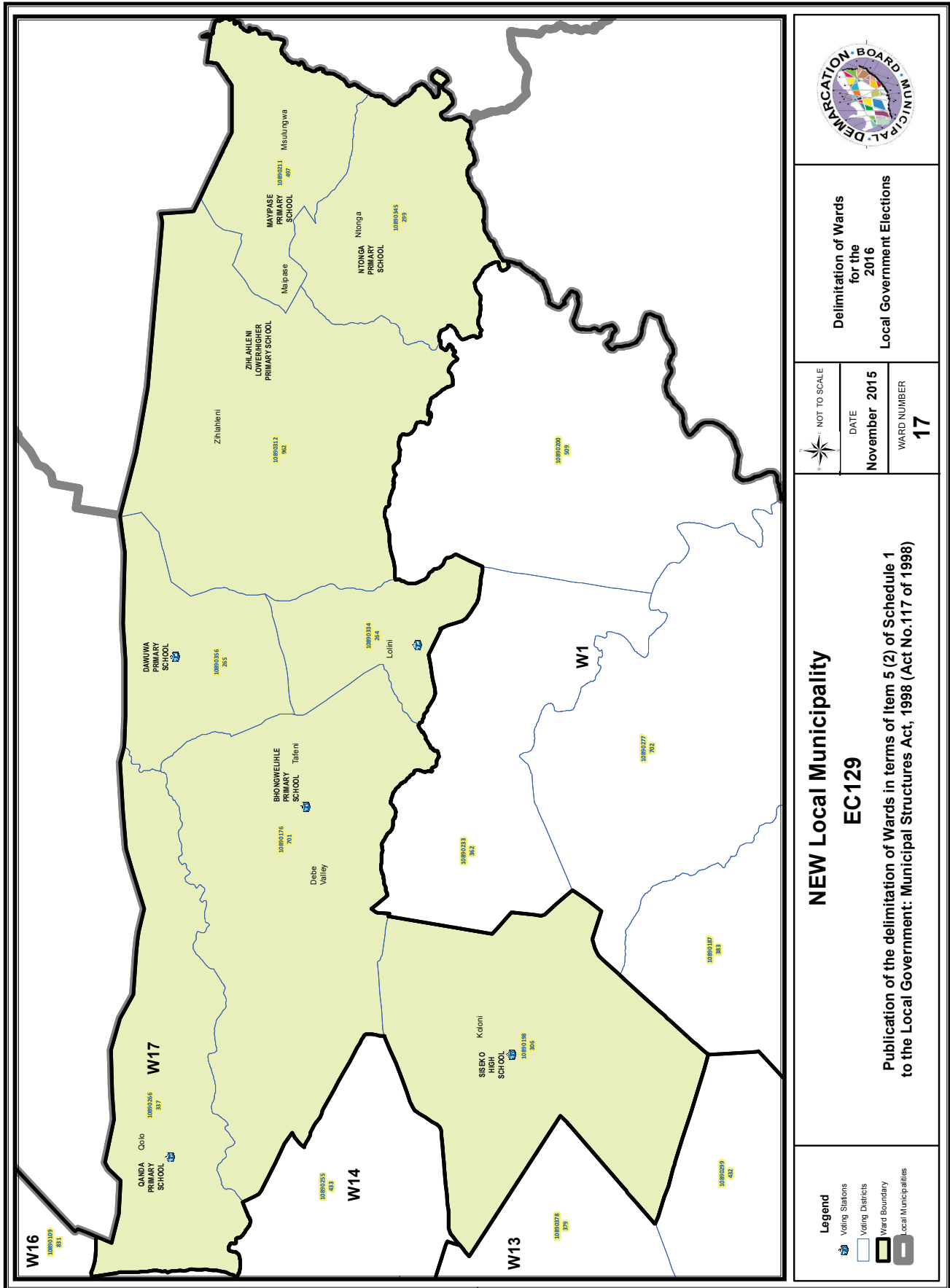


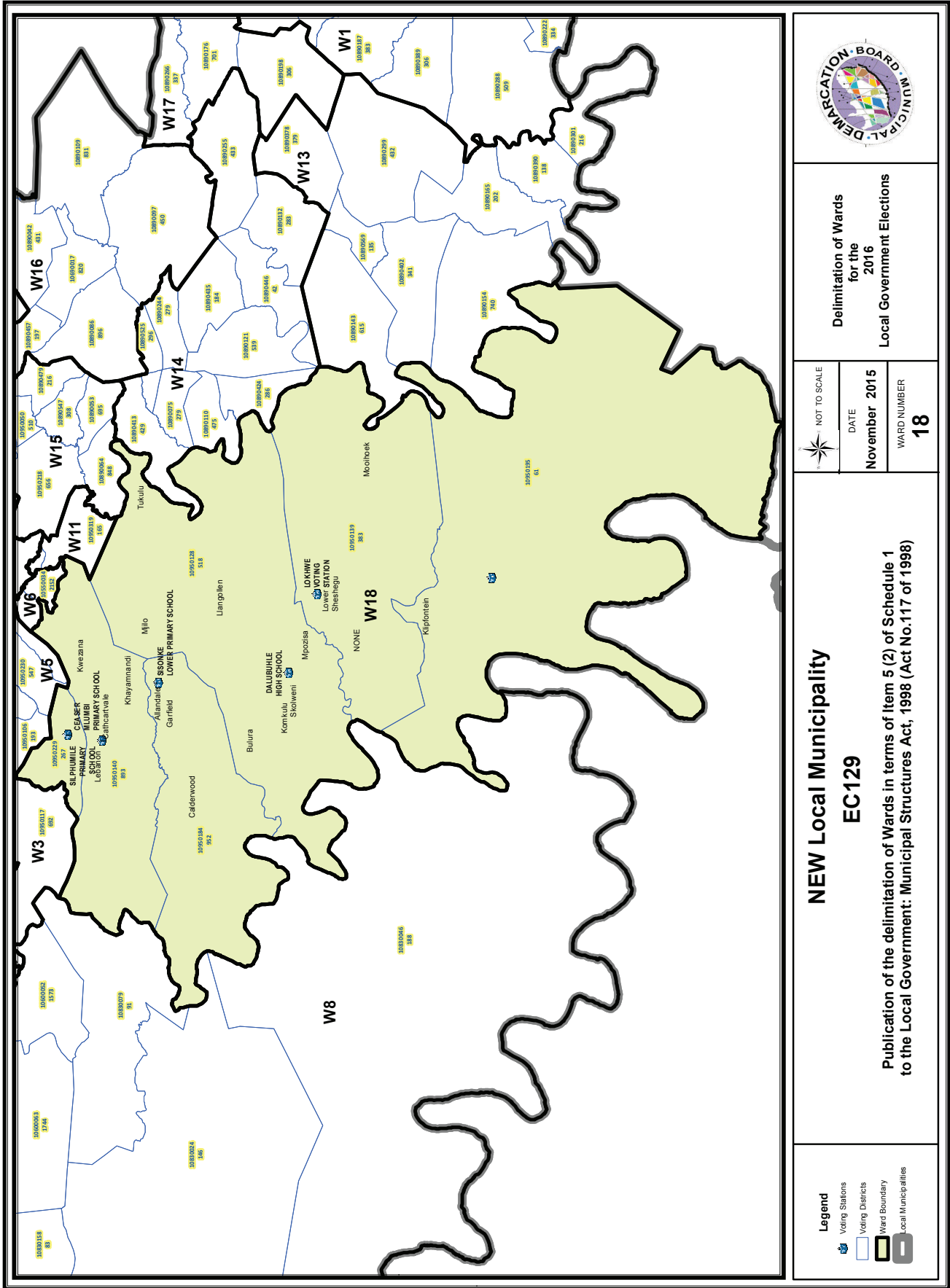


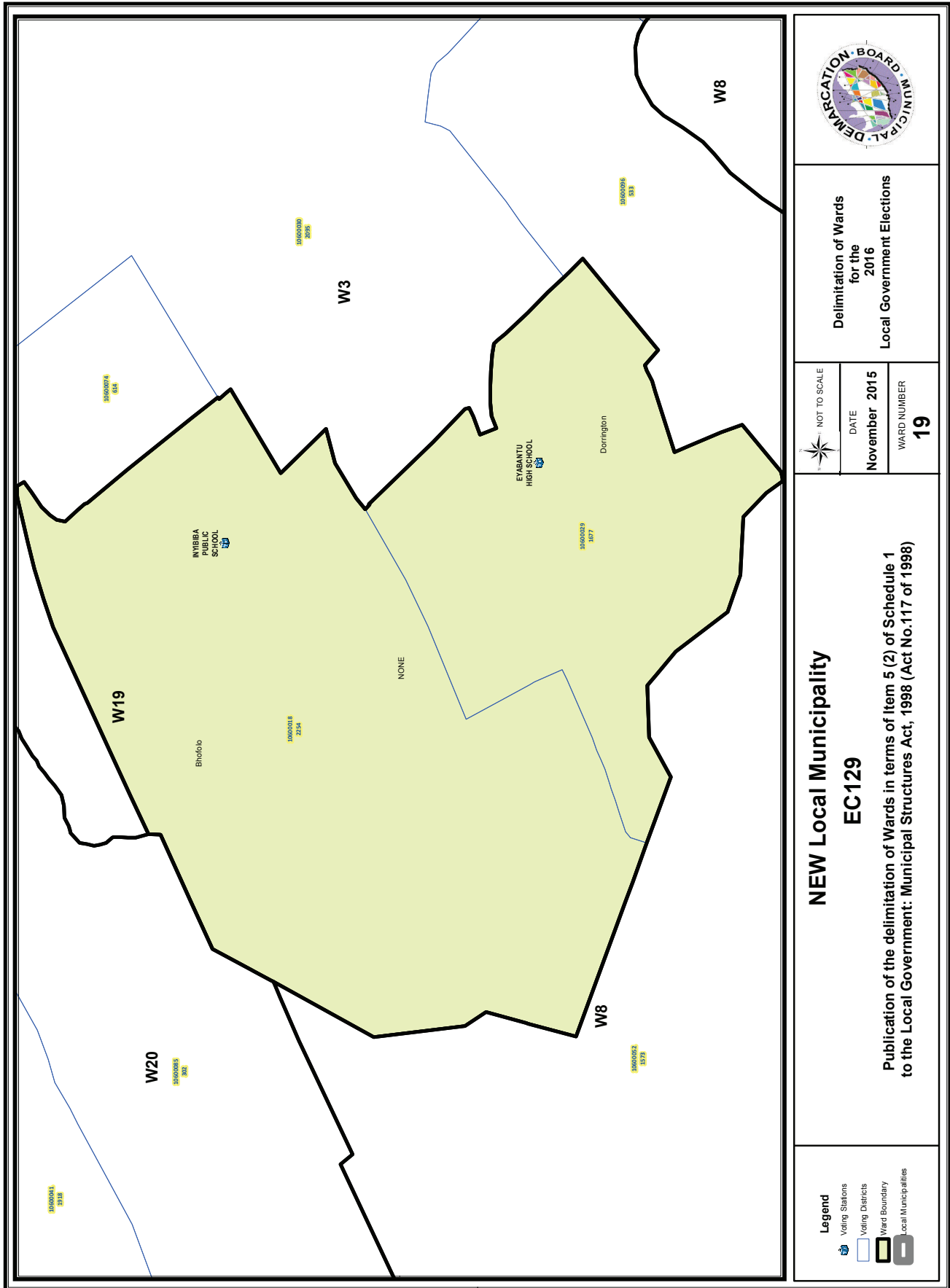












Delimitation of Wards  
for the  
2016  
Local Government Elections

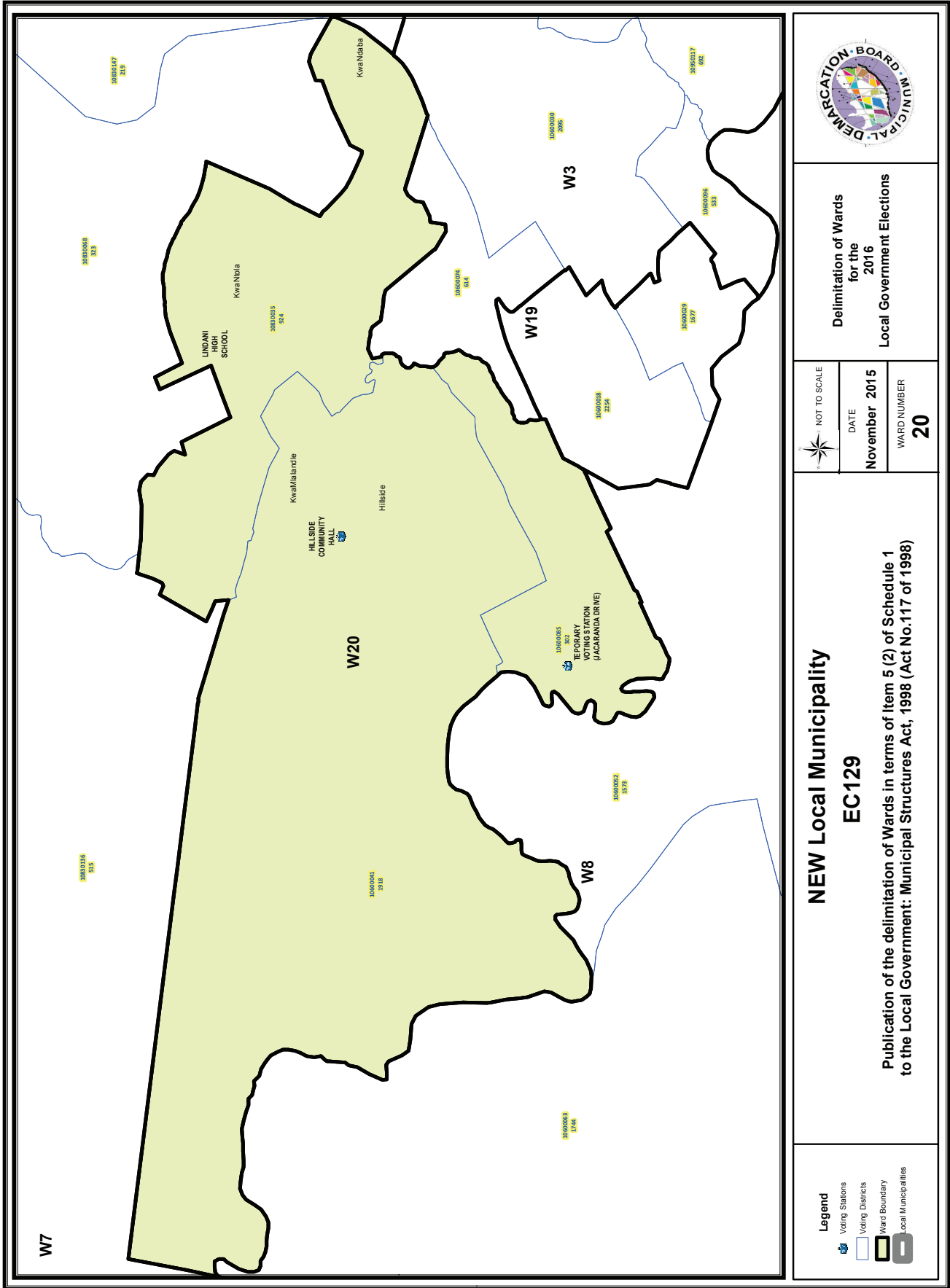


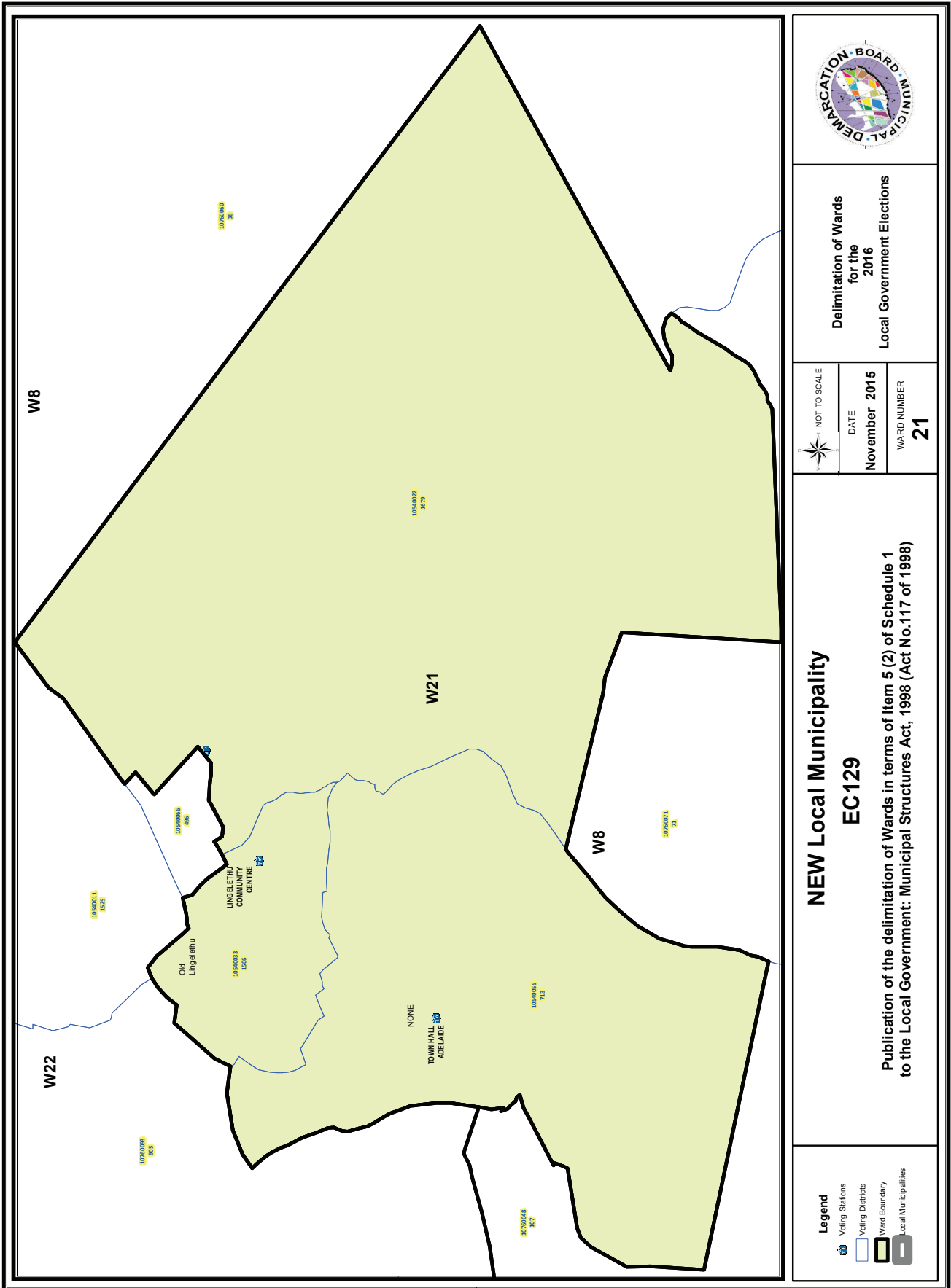
NOT TO SCALE  
DATE  
November 2015  
WARD NUMBER  
19

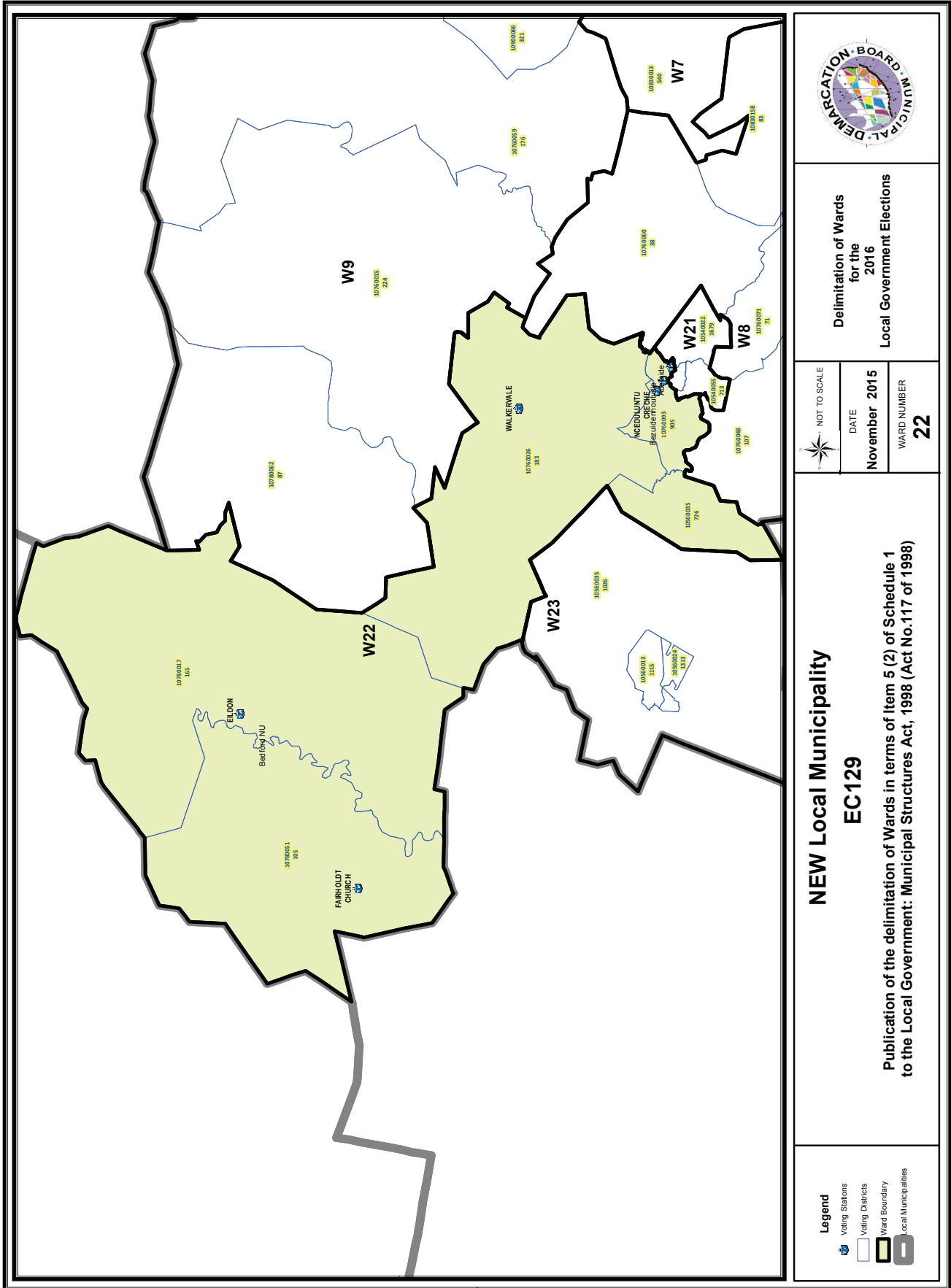
**NEW Local Municipality  
EC129**

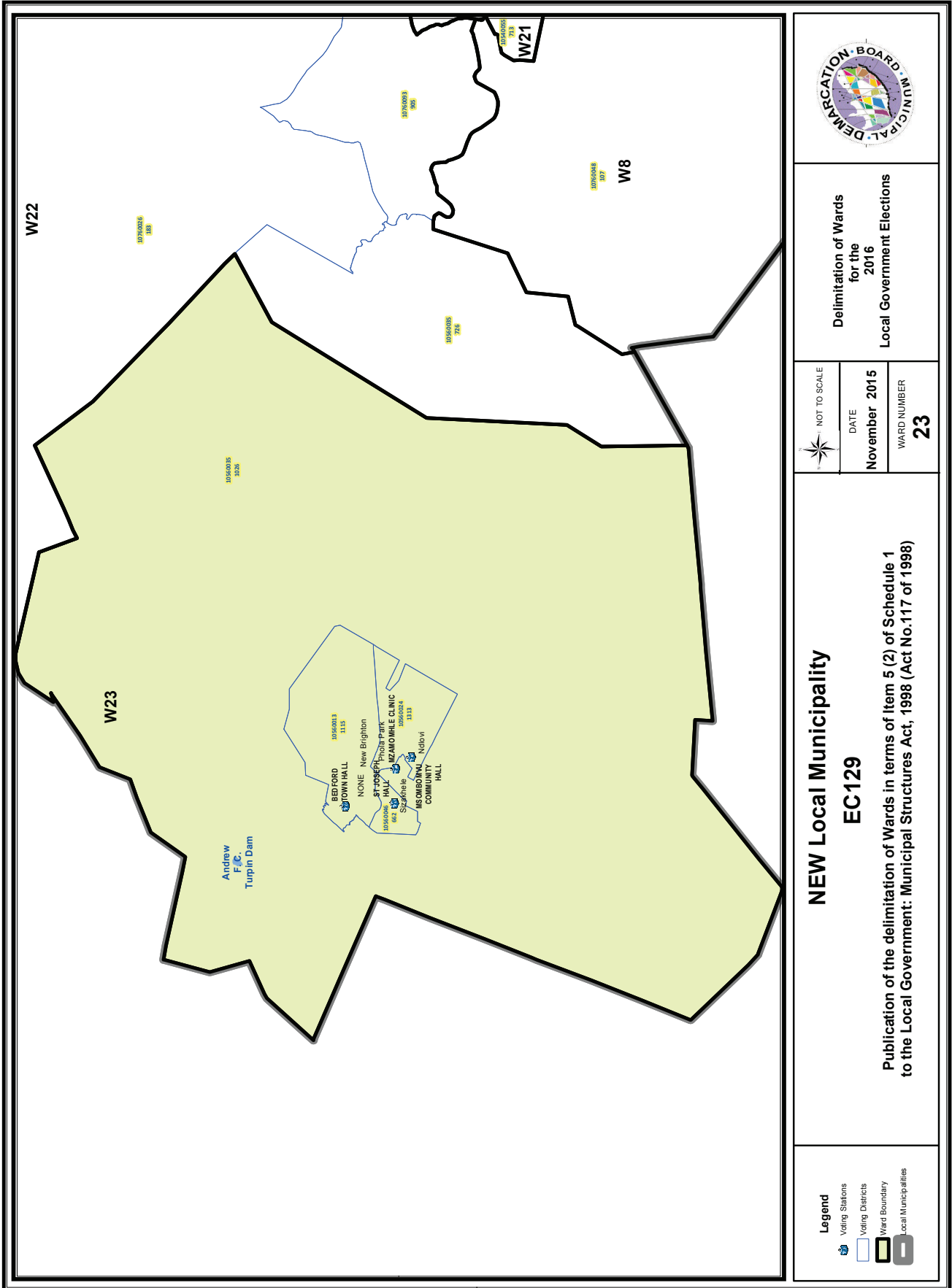
Publication of the delimitation of Wards in terms of Item 5 (2) of Schedule 1  
to the Local Government: Municipal Structures Act, 1998 (Act No.117 of 1998)

- Legend**
- Voting Stations
  - Voting Districts
  - Ward Boundary
  - Local Municipalities









# IMPORTANT

## Information

### from Government Printing Works

Dear Valued Customers,

Government Printing Works has implemented rules for completing and submitting the electronic Adobe Forms when you, the customer, submits your notice request.

Please take note of these guidelines when completing your form.

#### GPW Business Rules

1. No hand written notices will be accepted for processing, this includes Adobe forms which have been completed by hand.
2. Notices can only be submitted in Adobe electronic form format to the email submission address [submit.egazette@gpw.gov.za](mailto:submit.egazette@gpw.gov.za). This means that any notice submissions not on an Adobe electronic form that are submitted to this mailbox will be **rejected**. National or Provincial gazette notices, where the Z95 or Z95Prov must be an Adobe form but the notice content (body) will be an attachment.
3. Notices brought into GPW by "walk-in" customers on electronic media can only be submitted in Adobe electronic form format. This means that any notice submissions not on an Adobe electronic form that are submitted by the customer on electronic media will be **rejected**. National or Provincial gazette notices, where the Z95 or Z95Prov must be an Adobe form but the notice content (body) will be an attachment.
4. All customers who walk in to GPW that wish to submit a notice that is not on an electronic Adobe form will be routed to the Contact Centre where the customer will be taken through the completion of the form by a GPW representative. Where a customer walks into GPW with a stack of hard copy notices delivered by a messenger on behalf of a newspaper the messenger must be referred back to the sender as the submission does not adhere to the submission rules.
5. All notice submissions that do not comply with point 2 will be charged full price for the notice submission.
6. The current cut-off of all Gazette's remains unchanged for all channels. (Refer to the GPW website for submission deadlines – [www.gpwonline.co.za](http://www.gpwonline.co.za))
7. Incorrectly completed forms and notices submitted in the wrong format will be rejected to the customer to be corrected and resubmitted. Assistance will be available through the Contact Centre should help be required when completing the forms. (012-748 6200 or email [info.egazette@gpw.gov.za](mailto:info.egazette@gpw.gov.za))
8. All re-submissions by customers will be subject to the above cut-off times.
9. All submissions and re-submissions that miss the cut-off will be rejected to the customer to be submitted with a new publication date.
10. Information on forms will be taken as the primary source of the notice to be published. Any instructions that are on the email body or covering letter that contradicts the notice form content will be ignored.

You are therefore advised that effective from **Monday, 18 May 2015** should you not comply with our new rules of engagement, all notice requests will be rejected by our new system.

Furthermore, the fax number **012- 748 6030** will also be **discontinued** from this date and customers will only be able to submit notice requests through the email address [submit.egazette@gpw.gov.za](mailto:submit.egazette@gpw.gov.za).



Printed by and obtainable from the Government Printer, Bosman Street, Private Bag X85, Pretoria, 0001.  
 Contact Centre Tel: 012-748 6200. eMail: [info.egazette@gpw.gov.za](mailto:info.egazette@gpw.gov.za)  
 Also available at the Legal Advisory Services, **Province of the Eastern Cape**, Private Bag X0047, Bisho, 5605.  
 Tel. (040) 635-0052.