

Provincial Gazette

Free State Province

Published by Authority

Provinsiale Koerant

Provinsie Vrystaat

Uitgegee op Gesag

NO. 30	FRIDAY, 04 JUNE 2010	NO. 30	VRYDAG, 04 JUNIE 2010
PROVINCIAL NOTICE		PROVINSIALE KENNISGEWING	
32	Municipal Demarcation Board Delimitation of Municipal Wards in terms of the Local Government: Municipal Structures Act, 1998 Municipality : Masilonyana Local Municipality (FS181) 2	32	Munisipale Afbakeningsraad Afbakening van Munisipale Wyke ingevolge die Wet op Plaaslike Regering: Munisipale Strukture, 1998 Munisipaliteit : Masilonyana Plaaslike Munisipaliteit (FS181) 6

PROVINCIAL NOTICE

[NO. 32 OF 2010]**MUNICIPAL DEMARCATION BOARD
DELIMITATION OF MUNICIPAL WARDS IN TERMS OF THE LOCAL
GOVERNMENT: MUNICIPAL STRUCTURES ACT, 1998****Municipality : Masilonyana Local Municipality (FS181)**

In terms of Item 5(1) of Schedule 1 to the Local Government: Municipal Structures Act, 1998 (Act No.117 of 1998) ("the Act") the Municipal Demarcation Board hereby publishes its delimitation of wards for the above-mentioned municipality. Particulars of the delimitation are listed in the Schedule.

In terms of Item 5(2) of Schedule 1 to the Act, any person aggrieved by a delimitation may, within 14 days of publication of this notice, submit objections in writing to:

The Municipal Demarcation Board
Private Bag X28
Hatfield
0028

Fax: 012-3422480
E-mail: robert@demarcation.org.za

The attached form MDB5 must please be used to object. The form is also available on www.demarcation.org.za

LANDIWE MAHLANGU
CHAIRPERSON: MDB

SCHEDULE

In terms of Section 18(3) of the Local Government: Municipal Structures Act, 1998 (Act 117 of 1998) the MEC responsible for local government has determined that the municipal council consists of 20 councillors.

After having consulted the Independent Electoral Commission, The Municipal Demarcation Board has delimited the municipality into 10 wards in terms of Schedule 1 to the Act.

The number of registered voters in each ward does not vary by more than fifteen percent from the norm. The norm was determined by dividing the total number of voters on the municipal segment of the national common voters roll, namely 32672 voters on 12 February 2009, by the number of wards in the municipality.

An overview map of the boundary of the municipality, with the boundaries of the wards within the municipal boundary, and a map of each ward are attached. In case of a discrepancy between a map and this schedule, the map will prevail.

The ward numbers, the voting districts and voting stations in each ward, and the number of voters are as follows:

WARD 1 comprises of a total of 3382 registered voters

Voting District	Voting Station	Number of Voters
22480017	MATSHIDISO SECONDARY SCHOOL	1905
22480040	BRANDFORT CORRECTIONAL CENTRE	1477

WARD 2 comprises of a total of 2867 registered voters

Voting District	Voting Station	Number of Voters
22480051	MANDELA VIEW	521
22550015	SOUTPAN SIESTA (CLASS ROOM)	158
22550026	IKGOMOTSENG NG CHURCH	1563
22630115	KARROO	162
22630126	GOEDGEVONDEN SCHOOL	63
22630137	THALIA	225
22630182	DOPPER CHURCH	62
22630238	LOUISDAL	113

WARD 3 comprises of a total of 3228 registered voters

Voting District	Voting Station	Number of Voters
22560117	LUSAKA 2	908
22580018	ROMAN CATHOLIC CHURCH	1104
22630025	SACSONIA	117
22630047	VERKEERDEVLEI/TSHEPONG TLC	363
22630148	ZWARTKOP	105
22630272	ERFDEEL PRIMARY SCHOOL	128
22640015	CANDY SCHOOL	144
22640026	JUNCTIONSPRUIT PRIMARY SCHOOL	146
22640082	TAMA SCHOOL	94
22640093	MAPULE FARM SCHOOL (HALL)	119

WARD 4 comprises of a total of 3339 registered voters

Voting District	Voting Station	Number of Voters
22620024	UNITED REFORM CHURCH (URC)	1197
22620035	WINBURG CORRECTIONAL CENTRE	737
22620046	TLONG-KGANYENG SCHOOL	1405

WARD 5 comprises of a total of 3707 registered voters

Voting District	Voting Station	Number of Voters
22620013	MAKELEKETLA COMMUNITY HALL	2869
22620057	WESSELSPUNT	39
22620068	BOITUMELO	653
22640318	LANGVERWACHT	146

WARD 6 comprises of a total of 3574 registered voters

Voting District	Voting Station	Number of Voters
22560049	MUNICIPAL TOWN HALL	1117
22560072	BEATRIX MINE (TENT)	1744
22560083	THAKABANNA	218
22560094	JOEL MINE HOSTEL HALL	267
22640071	SOUTFONTEIN	88
22640116	AVONDSRUST SCHOOL	140

WARD 7 comprises of a total of 3012 registered voters

Voting District	Voting Station	Number of Voters
22560016	BOLIBA PRIMARY SCHOOL	1465
22560061	KHOTSO SCHOOL HALL	1547

WARD 8 comprises of a total of 3444 registered voters

Voting District	Voting Station	Number of Voters
22560038	LUSAKA AREA	2268
22560106	PHAHAMENG CRECHE	1176

WARD 9 comprises of a total of 3117 registered voters

Voting District	Voting Station	Number of Voters
22560027	COMMUNITY HALL MASILO	1310
22560050	ECO VILLAGE	1752
22640307	GELUKSFONTEIN	55

WARD 10 comprises of a total of 3002 registered voters

Voting District	Voting Station	Number of Voters
22480028	MONAMODI PRIMARY SCHOOL	1219
22480039	MAJWEMASWEU PRE-SCHOOL	1783

Important: This Schedule contains the total number of registered voters on the municipality's segment of the national common voters' roll on 12 February 2009 as provided for in Government Notice No. 750 published in Government Gazette No. 32407 of 15 July 2009. The voting district numbers, the voting district boundaries, voting stations, and the number of voters may change after the registration of voters for the 2011 local elections.

FORM MDB5

WARD DELIMITATION

OBJECTION IN TERMS OF ITEM 5(2) OF SCHEDULE 1 TO THE
LOCAL GOVERNMENT: MUNICIPAL STRUCTURES ACT, 1998

Name of municipality:.....Code:.....

Name of aggrieved person/institution:.....

Contact person in case of an institution:.....

Address:.....

Tel. number:.....Cell number:.....

Email address:.....

I hereby object to the delimitation of the boundaries of the following wards:

WARD NUMBER	REASON/MOTIVATION

I request the Municipal Demarcation Board to consider the following alternative proposals:

Ward number	The ward should comprise of the following voting districts (Provide voting district number and the number of voters in brackets e.g. VD1123456(1500)+VD345678(2500)=4000)	Motivation

I confirm that:

- each cluster of voting districts form a contiguous ward;
- the number of voters in each ward fall within the minimum and maximum of voters allowed per ward;
- the proposed ward boundaries comply, in general, with the criteria.

SIGNATURE _____

NAME AND SURNAME _____

DATE _____

PROVINSIALE KENNISGEWING

[NO. 32 VAN 2010]

**MUNISIPALE AFBAKENINGSRAAD
AFBAKENING VAN MUNISIPALE WYKE INGEVOLGE DIE WET OP
PLAASLIKE REGERING: MUNISIPALE STRUKTURE, 1998****Munisipaliteit : Masilonyana Plaaslike Munisipaliteit (FS181)**

Ingevolge Item 5(1) van Bylae 1 van die Wet op Plaaslike Regering: Munisipale Strukture, 1998 (Wet No. 117 van 1998) ("die Wet") publiseer die Munisipale Afbakeningsraad hiermee sy afbakening van wyke vir die bogenaaamde munisipaliteit. Besonderhede van die afbakening is vervat in die Bylae.

Ingevolge Item 5(2) van Bylae 1 van die Wet, kan enige persoon wat gegrief is deur 'n afbakening binne 14 dae na publikasie van hierdie kennisgewing skriftelike besware voorlê aan:

Die Munisipale Afbakeningsraad
Privaatsak X28
Hatfield
0028

Faks: 012-3422480

E-pos: robert@demarcation.org.za

Die aangehegte vorm MDB5 moet asseblief gebruik word om beswaar aan te teken. Die vorm is ook beskikbaar op www.demarcation.org.za

**LANDIWE MAHLANGU
VOORSITTER: MUNISIPALE AFBAKENINGSRAAD****BYLAE**

Ingevolge Artikel 18(3) van die Wet op Plaaslike Regering: Munisipale Strukture, 1998 (Wet 117 van 1998) het die LUR vir plaaslike regering bepaal dat die munisipale raad bestaan uit 20 raadslede.

Na oorlegpleging met die Onafhanklike Verkiesingskommissie het die Munisipale Afbakeningsraad die munisipaliteit in 10 wyke afgebaken ingevolge Bylae 1 van die Wet.

Die getal geregistreerde kiesers in elke wyk, wyk nie meer as vyftien persent van die norm af nie. Die norm is bepaal deur die getal geregistreerde kiesers op die munisipale segment van die nasionale gemeenskaplike kieserslys, naamlik 32672 kiesers op 12 Februarie 2009, deur die getal wyke in die munisipaliteit te deel.

'n Oorsigkaart van die munisipale grens met die grense van die wyke binne die munisipale grens, en 'n kaart van elke wyk, is aangeheg. Ingeval van 'n verskil tussen 'n kaart en hierdie bylae, sal die kaart geld.

Die wyknommers, die stemdistrikte en stemlokale in elke wyk, en die getal kiesers is as volg:

WYK 1 het 3382 kiesers

Stemdistrik	Stemlokaal	Getal kiesers
22480017	MATSHIDISO SECONDARY SCHOOL	1905
22480040	BRANDFORT CORRECTIONAL CENTRE	1477

WYK 2 het 2867 kiesers

Stemdistrik	Stemlokaal	Getal kiesers
22480051	MANDELA VIEW	521
22550015	SOUTPAN SIESTA (CLASS ROOM)	158
22550026	IKGOMOTSENG NG CHURCH	1563
22630115	KARROO	162
22630126	GOEDGEVONDEN SCHOOL	63
22630137	THALIA	225
22630182	DOPPER CHURCH	62
22630238	LOUISDAL	113

WYK 3 het 3228 kiesers

Stemdistrik	Stemlokaal	Getal kiesers
22560117	LUSAKA 2	908
22580018	ROMAN CATHOLIC CHURCH	1104
22630025	SACSONIA	117
22630047	VERKEERDEVLEI/TSHEPONG TLC	363
22630148	ZWARTKOP	105
22630272	ERFDEEL PRIMARY SCHOOL	128
22640015	CANDY SCHOOL	144
22640026	JUNCTIONSPRUIT PRIMARY SCHOOL	146
22640082	TAMA SCHOOL	94
22640093	MAPULE FARM SCHOOL (HALL)	119

WYK 4 het 3339 kiesers

Stemdistrik	Stemlokaal	Getal kiesers
22620024	UNITED REFORM CHURCH (URC)	1197
22620035	WINBURG CORRECTIONAL CENTRE	737
22620046	TLONG-KGANYENG SCHOOL	1405

WYK 5 het 3707 kiesers

Stemdistrik	Stemlokaal	Getal kiesers
22620013	MAKELEKETLA COMMUNITY HALL	2869
22620057	WESSELSPUNT	39
22620068	BOITUMELO	653
22640318	LANGVERWACHT	146

WYK 6 het 3574 kiesers

Stemdistrik	Stemlokaal	Getal kiesers
22560049	MUNICIPAL TOWN HALL	1117
22560072	BEATRIX MINE (TENT)	1744
22560083	THAKABANNA	218
22560094	JOEL MINE HOSTEL HALL	267
22640071	SOUTFONTEIN	88
22640116	AVONDSRUST SCHOOL	140

WYK 7 het 3012 kiesers

Stemdistrik	Stemlokaal	Getal kiesers
22560016	BOLIBA PRIMARY SCHOOL	1465
22560061	KHOTSO SCHOOL HALL	1547

WYK 8 het 3444 kiesers

Stemdistrik	Stemlokaal	Getal kiesers
22560038	LUSAKA AREA	2268
22560106	PHAHAMENG CRECHE	1176

WYK 9 het 3117 kiesers

Stemdistrik	Stemlokaal	Getal kiesers
22560027	COMMUNITY HALL MASILO	1310
22560050	ECO VILLAGE	1752
22640307	GELUKSFONTEIN	55

WYK 10 het 3002 kiesers

Stemdistrik	Stemlokaal	Getal kiesers
22480028	MONAMODI PRIMARY SCHOOL	1219
22480039	MAJWEMASWEU PRE-SCHOOL	1783

Belangrik: Hierdie Bylae bevat die totale getal geregistreerde kiesers op die munisipaliteit se segment van die nasionale gemeenskaplike kieserslys op 12 Februarie 2009, waarvoor voorsiening gemaak is in Goewermentskennisgewing No. 750 gepubliseer in Staatskoerant No. 32407 van 15 Julie 2009. Die stemdistriknommers, die grense van die stemdistrikte, die stemlokale, en die getal kiesers mag verander na die registrasie van kiesers vir die 2011 plaaslike verkiesings.

VORM MDB5

WYKSAFBAKENING

BESWAAR INGEVOLGE ITEM 5(2) VAN BYLAE 1
VAN DIE WET OP PLAASLIKE REGERING: MUNISIPALE STRUKTURE, 1998

Naam van Munisipaliteit:.....Code:.....

Naam van beswaarde persoon/instelling:.....

Kontak persoon in geval van 'n instelling:.....

Adres:.....

Tel. nommer:..... Selfoonnommer:.....

E-pos adres:.....

Hiermee teken ek beswaar aan teen die afbakening van die grense van die volgende wyke:

WYK NOMMER	REDE/MOTIVERING

Ek versoek die Munisipale Afbakeningsraad om die volgende alternatiewe voorstelle te oorweeg:

Wyk nommer	Die wyk moet bestaan uit die volgende stemdistrikte: (Voorsien die stemdistriktnommer en die getal geregistreerde kiesers as volg $VD1123456(1500)+VD345678(2500)=4000$)	Motivering

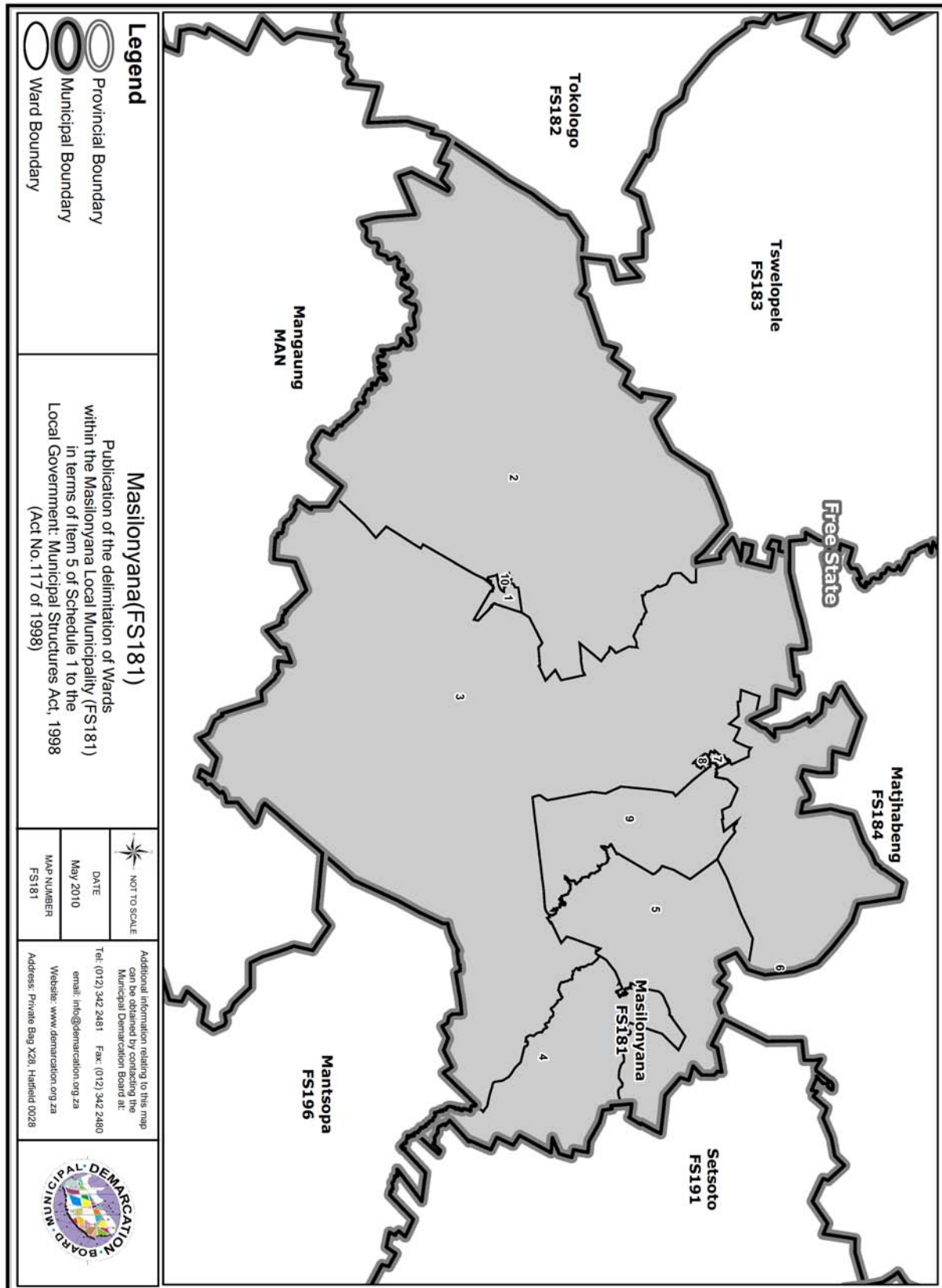
Ek bevestig dat:

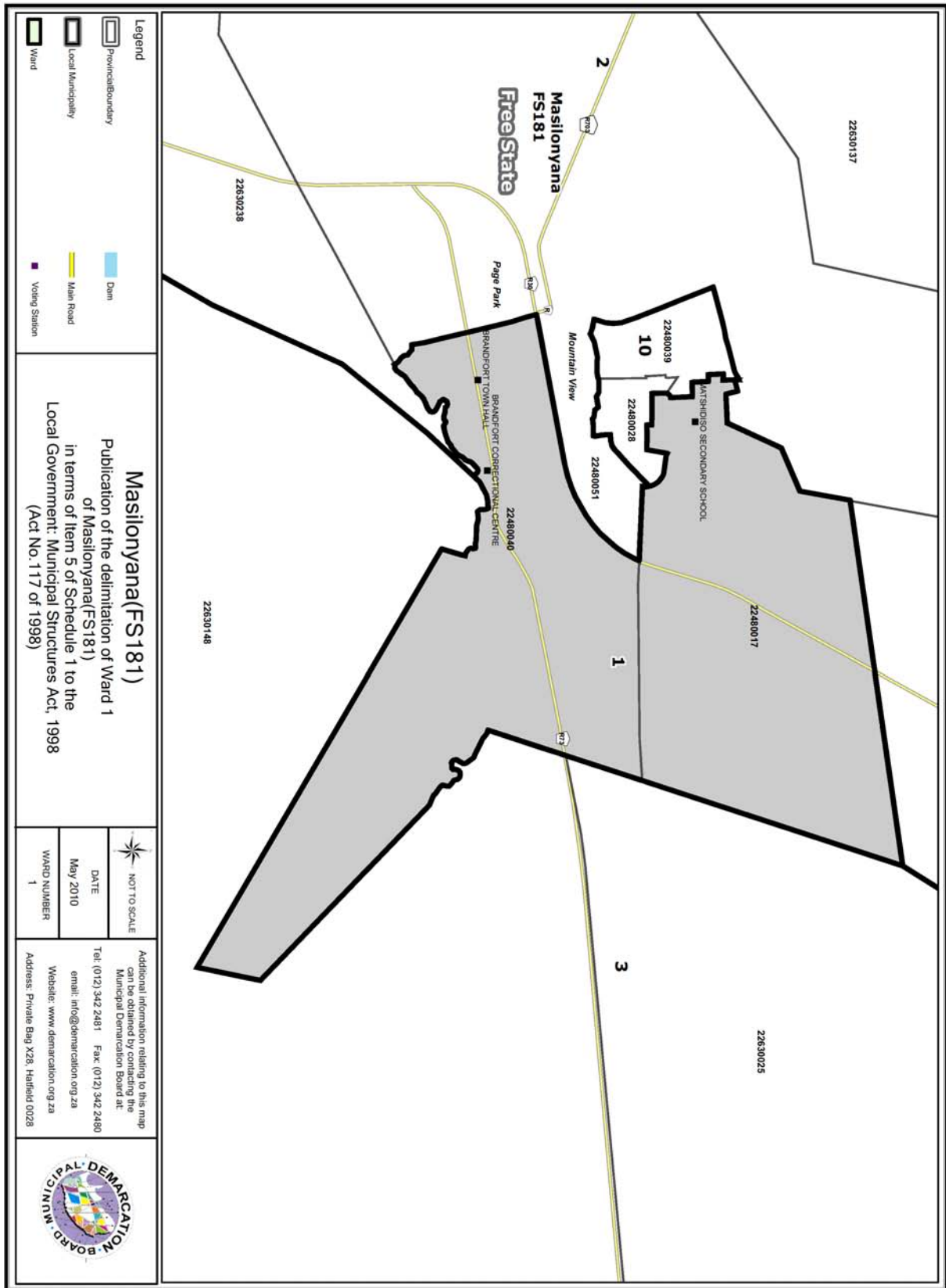
- die saamgevoegde stemdistrikte vorm 'n aaneenlopende wyk;
- die getal kiesers in elke wyk is binne die minimum en maksimum getal wat per wyk toegelaat word;
- die voorgestelde wyke voldoen in die algemeen aan die kriteria.

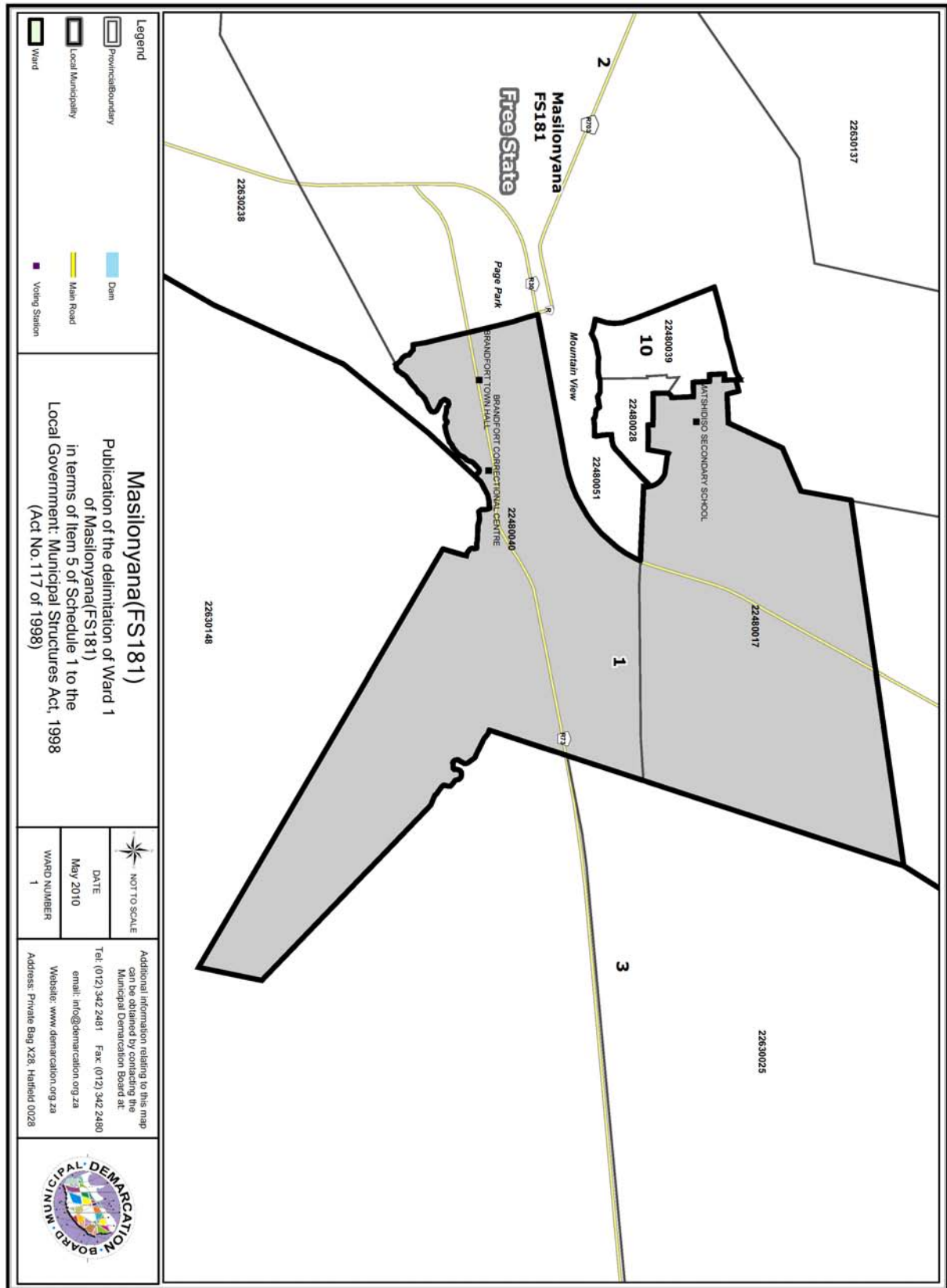
HANDTEKENING

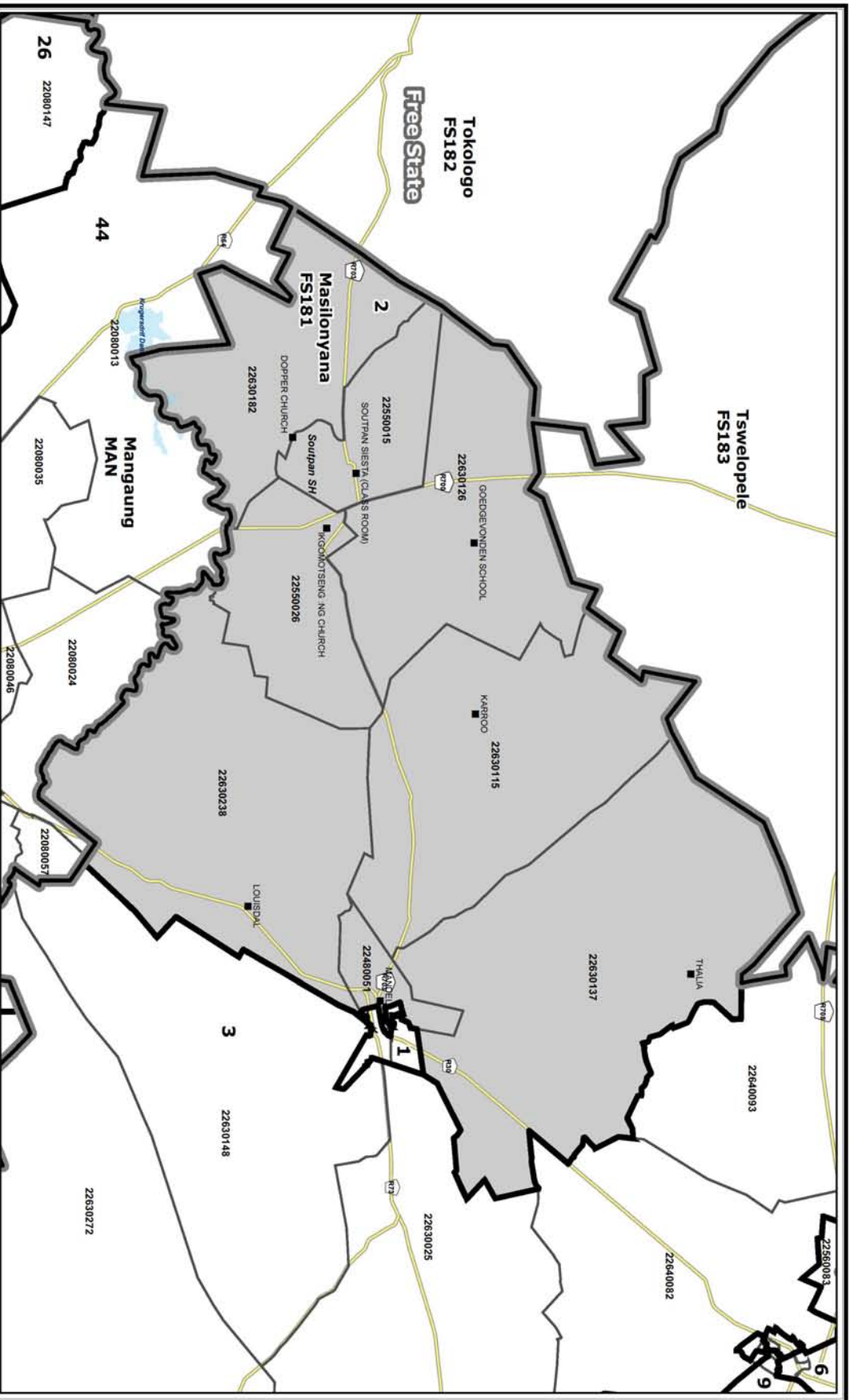
NAAM EN VAN

DATUM









- Legend**
- Provincial Boundary
 - Local Municipality
 - Ward
 - Dam
 - Main Road
 - Voting Station

Masionyana (FS181)
Publication of the delimitation of Ward 2
of Masionyana (FS181)
in terms of Item 5 of Schedule 1 to the
Local Government: Municipal Structures Act, 1998
(Act No. 117 of 1998)



NOT TO SCALE

DATE

May 2010

WARD NUMBER

2

Additional information relating to this map
can be obtained by contacting the
Municipal Demarcation Board at:

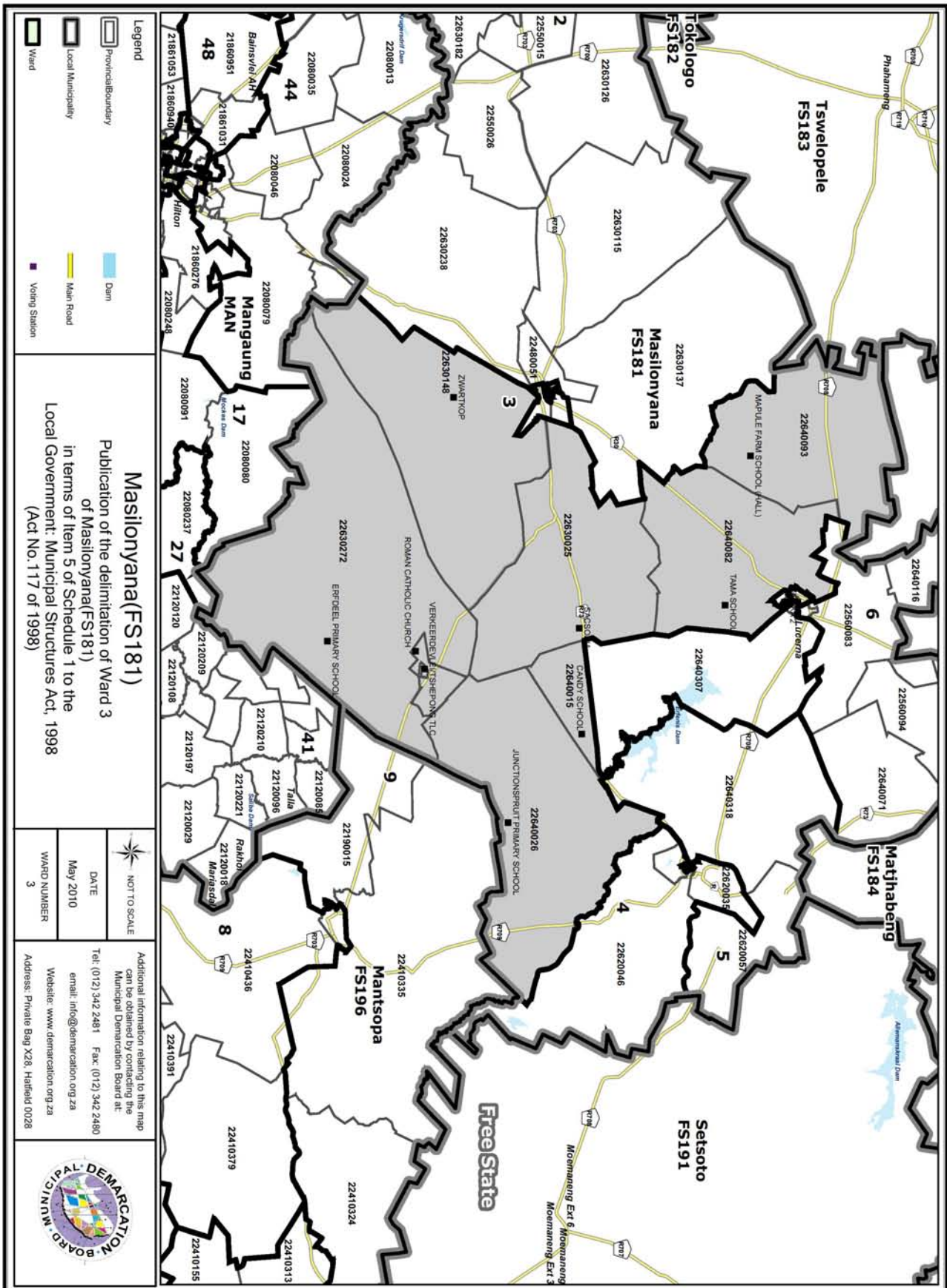
Tel: (012) 342 2481 Fax: (012) 342 2480

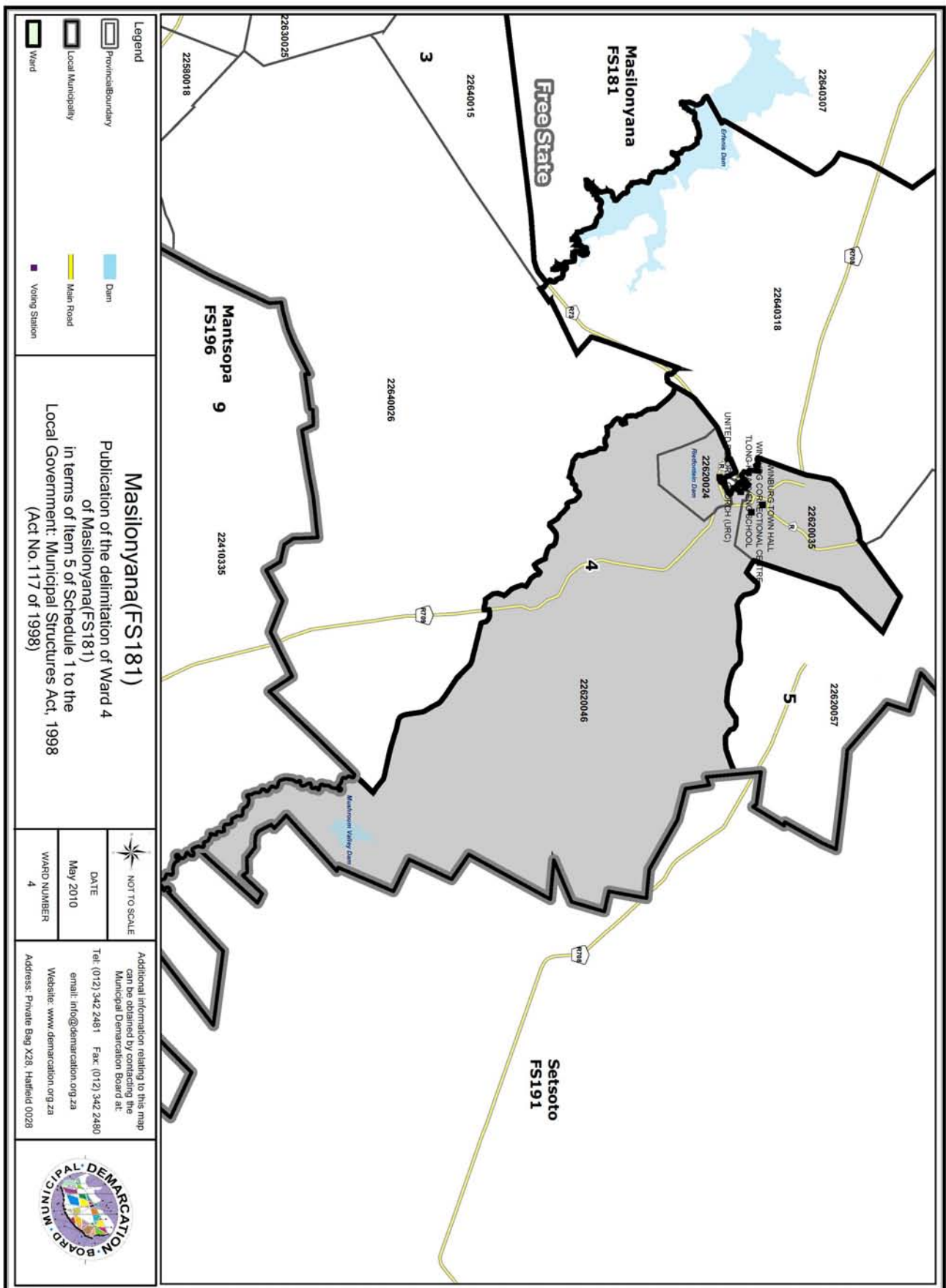
email: info@demarcation.org.za

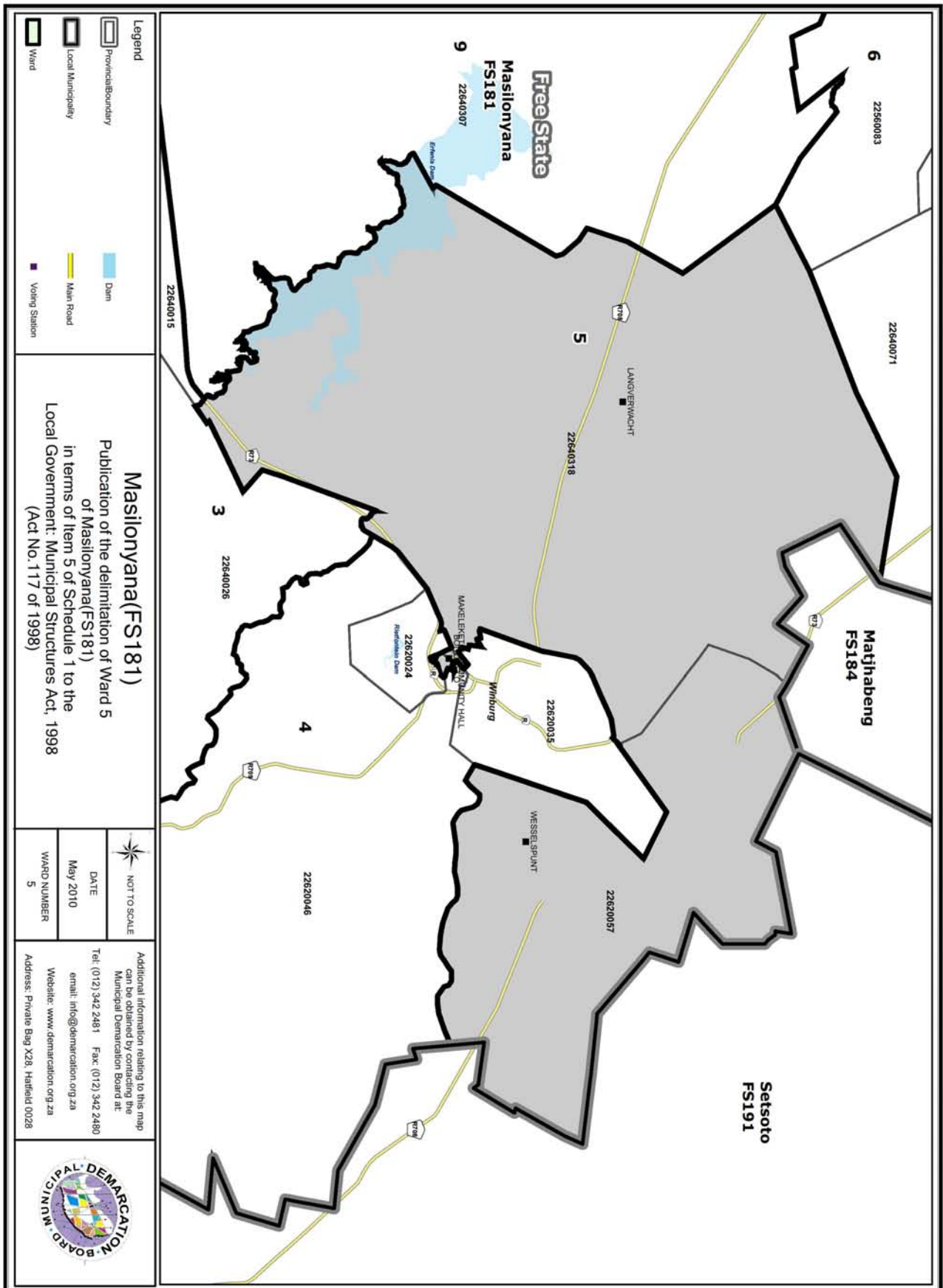
Website: www.demarcation.org.za

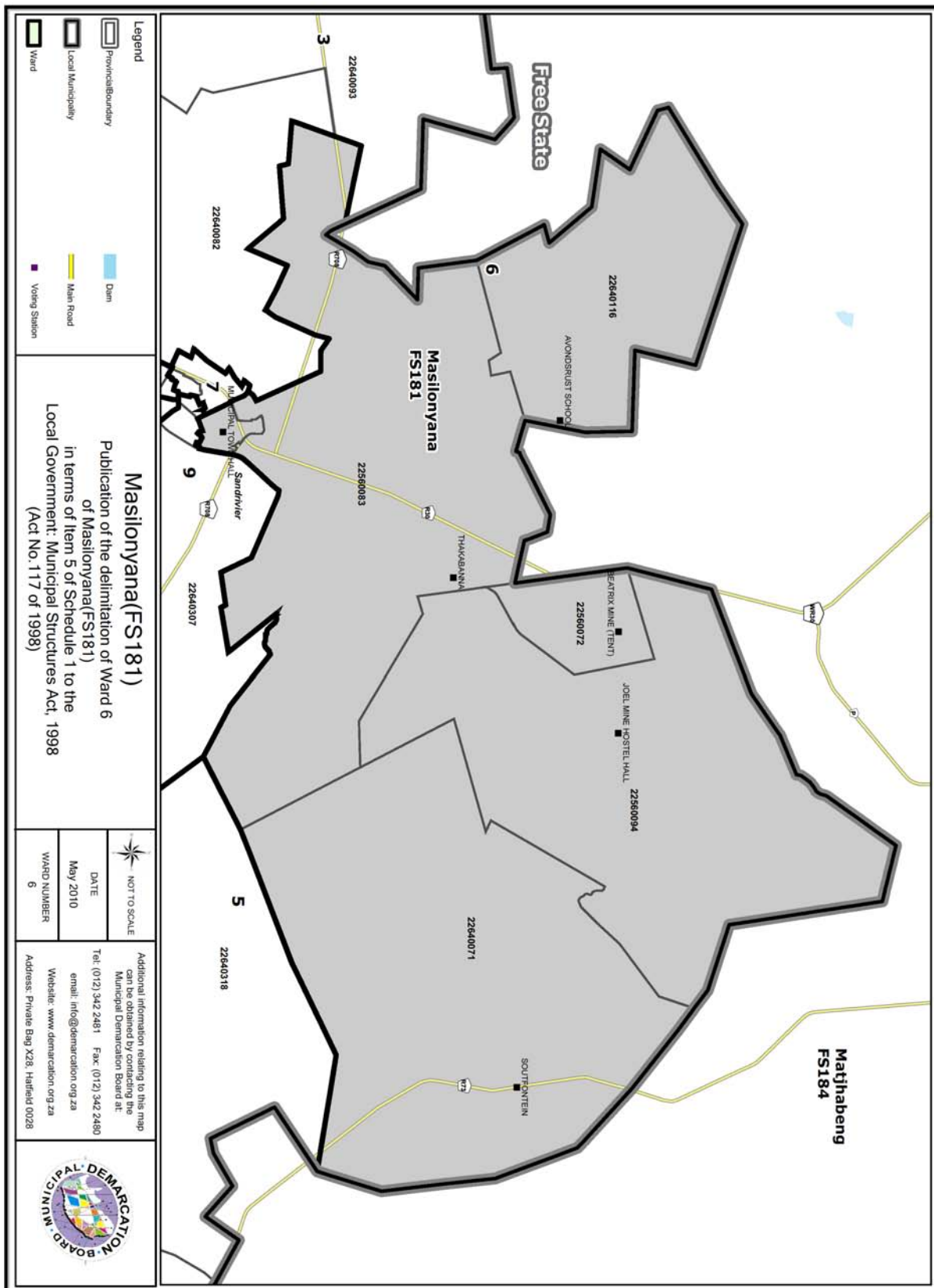
Address: Private Bag X28, Hatfield 0028

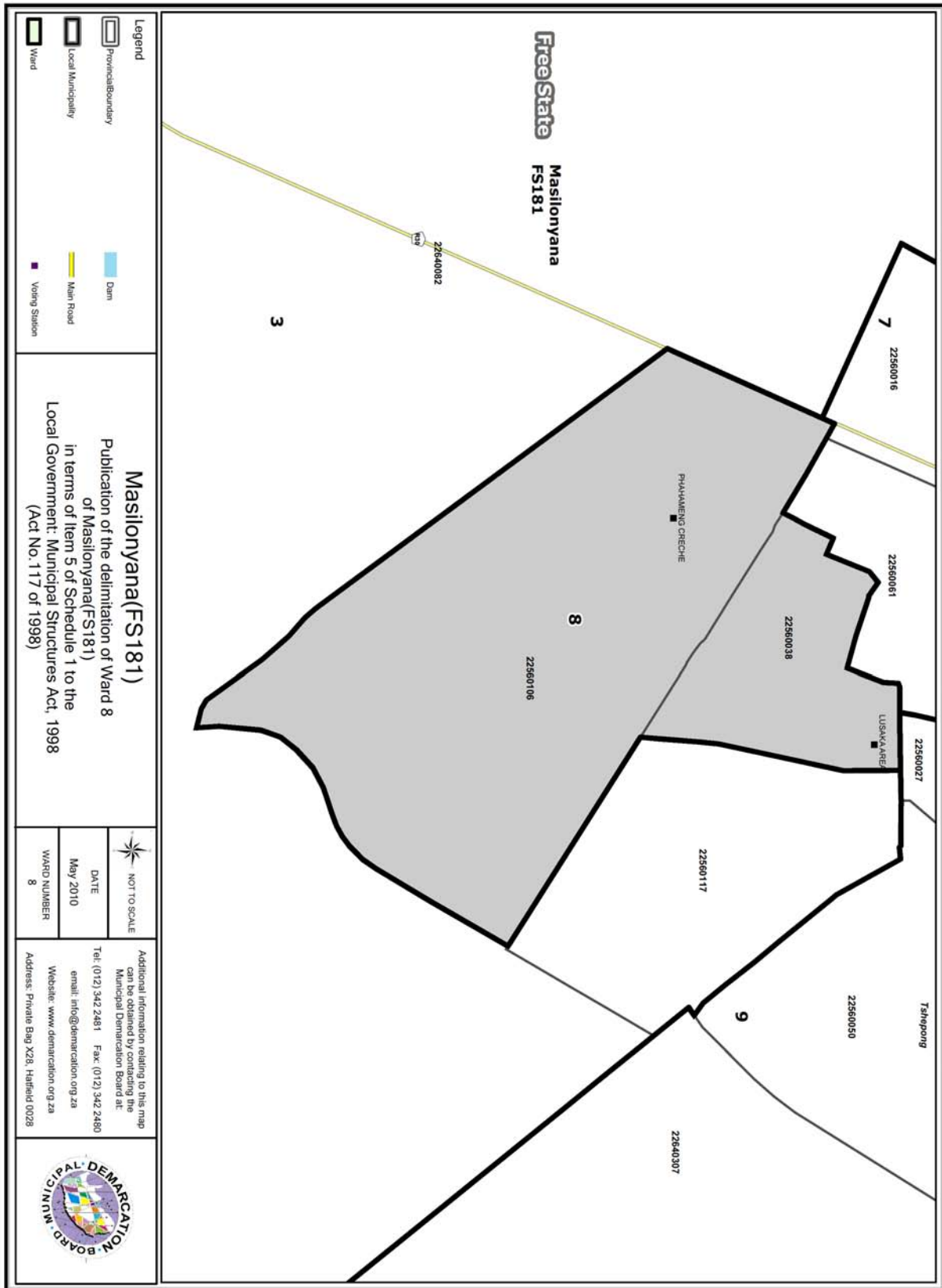


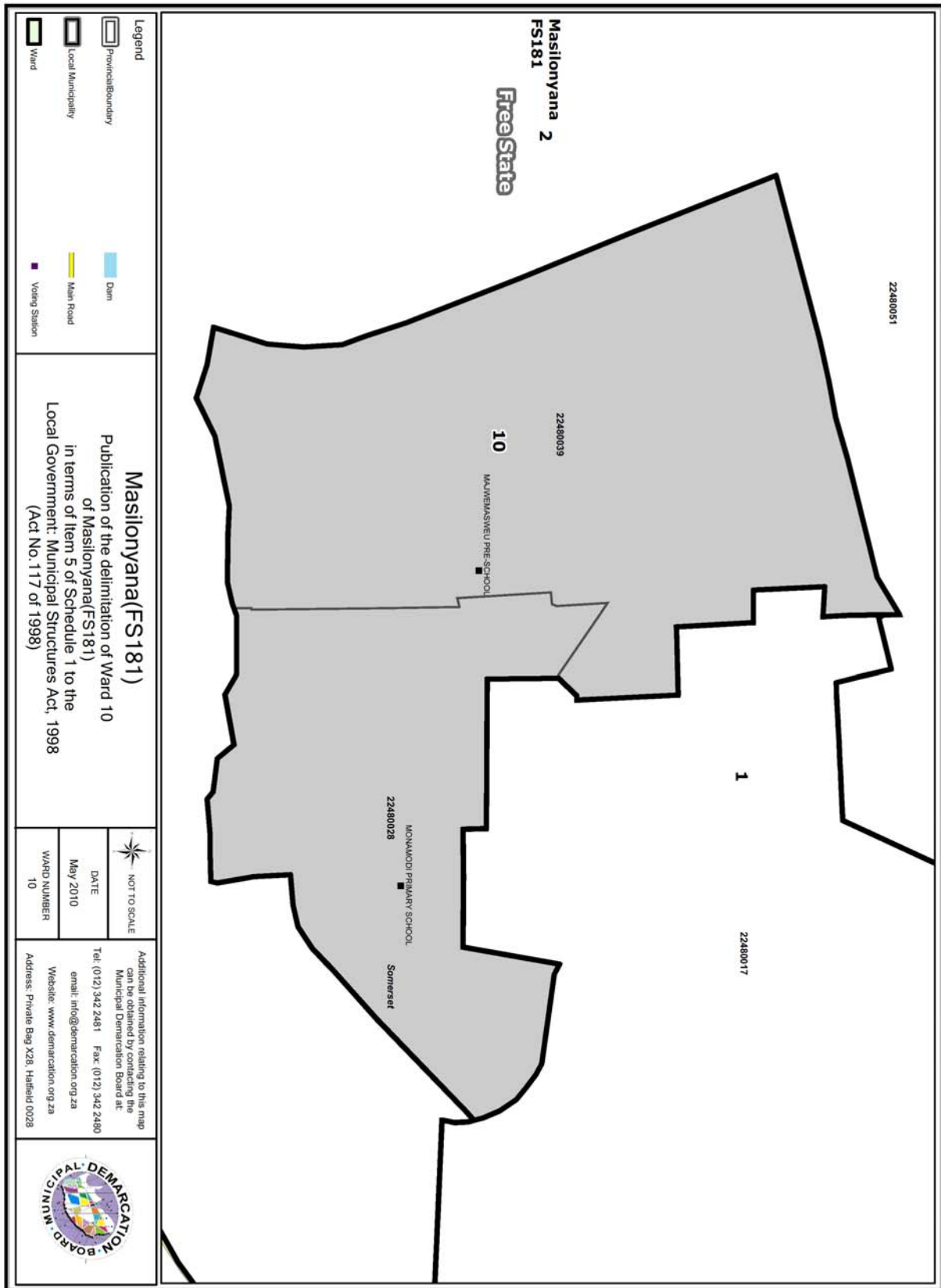












PROVINCIAL GAZETTE
(Published every Friday)

All correspondence, advertisements, etc. must be addressed to the Officer in charge of the Provincial Gazette, P.O. Box 517, Bloemfontein, Tel.: (051) 403 3139. Free Voucher copies of the Provincial Gazette or cuttings of advertisements are NOT supplied.

Subscription Rates (payable in advance)

The subscription fee for the Provincial Gazette (including all Extraordinary Provincial Gazettes) are as follows:

SUBSCRIPTION: (POST)

PRICE PER COPY	R 16.80
HALF-YEARLY	R420.10
YEARLY	R840.30

SUBSCRIPTION: (OVER THE COUNTER / E-MAIL)

PRICE PER COPY	R 10.70
HALF-YEARLY	R 266.20
YEARLY	R 532.45

Stamps are not accepted

Closing time for acceptance of copy

All advertisements must reach the Officer in Charge of the Provincial Gazette **not later than 16:00, three working days** prior to the publication of the Gazette. Advertisements received after that time will be held over for publication in the issue of the following week, or if desired by the advertiser, will be inserted in the current issue as a "Late Advertisement". In such case the advertisement must be delivered to the Officer in Charge **not later than 08:00 on the Tuesday** preceding the publication of the Gazette and double rate will be charged for that advertisement.

A "Late Advertisement" will not be inserted as such without definite instructions from the advertiser.

Advertisement Rates

Notices required by Law to be inserted in the Provincial Gazette: R15.30 per centimeter or portion thereof, single column.

Advertisement fees are payable in advance to the Officer in charge of the Provincial Gazette, P.O. Box 517, Bloemfontein, 9300, Tel.: (051) 403 3139.

NUMBERING OF PROVINCIAL GAZETTE

You are hereby informed that the numbering of the Provincial Gazette /Tender Bulletin and notice numbers will from 2010 coincide with the relevant financial year. In other words, the chronological numbering starting from one will commence on or after 1 April of every year.

PROVINSIALE KOERANT
(Verskyn elke Vrydag)

Alle korrespondensie, advertensies, ens. moet aan die Beampte Belas met die Provinsiale Koerant, Posbus 517, Bloemfontein, Tel.: No. (051) 403 3139 geadresseer word. Gratis eksemplare van die Provinsiale Koerant of uitknipsels van advertensies word NIE verskaf nie.

Intekengeld (vooruitbetaalbaar)

Die intekengeld vir die Provinsiale Koerant (insluitend alle Buitengewone Provinsiale Koerante) is soos volg:

INTEKENGELD: (POS)

PRYS PER EKSEMPLAAR	R 16.80
HALFJAARLIKS	R420.10
JAARLIKS	R840.30

INTEKENGELD: (OOR DIE TOONBANK / E-POS)

PRYS PER EKSEMPLAAR	R 10.70
HALFJAARLIKS	R 266.20
JAARLIKS	R 532.45

Seëls word nie aanvaar nie.

Sluitingstyd vir die Aannee van Kopie

Alle advertensies moet die Beampte Belas met die Provinsiale Koerant bereik **nie later nie as 16:00 drie werksdae** voordat die Koerant uitgegee word. Advertensies wat na daardie tyd ontvang word, word oorgehou vir publikasie in die uitgawe van die volgende week, of as die adverteerder dit verlang, sal dit in die Koerant wat op die pers is as 'n "Laat Advertensie" geplaas word. In sulke gevalle moet die advertensie aan die Beampte oorhandig word **nie later nie as 08:00 op die Dinsdag** voordat die Koerant gepubliseer word en dubbeltarief sal vir dié advertensie gevra word.

'n "Laat Advertensie" sal nie sonder definitiewe instruksies van die Adverteerder as sodanige geplaas word nie.

Advertensietariewe

Kennisgewings wat volgens Wet in die Provinsiale Koerant geplaas moet word: R15.30 per sentimeter of deel daarvan, enkel-kolom.

Advertensiegelde is vooruitbetaalbaar aan die Beampte belas met die Provinsiale Koerant, Posbus 517, Bloemfontein 9300, Tel.: (051) 403 3139.

NOMMERING VAN PROVINSIALE KOERANT

U word hiermee in kennis gestel dat die nommering van die Provinsiale Koerant / Tender Bulletin en kennisgewingnummers vanaf 2010 met die betrokke boekjaar sal ooreenstem. Met ander woorde, die kronologiese nommering beginnende met een, sal op of na 1 April van elke jaar begin.