

# Provincial Gazette

**Free State Province**

Published by Authority

# Provinsiale Koerant

**Provinsie Vrystaat**

Uitgegee op Gesag

NO. 34	FRIDAY, 04 JUNE 2010	NO. 34	VRYDAG, 04 JUNIE 2010
PROVINCIAL NOTICE		PROVINSIALE KENNISGEWING	
36	Municipal Demarcation Board Delimitation of Municipal Wards in terms of the Local Government: Municipal Structures Act, 1998 Municipality : Mafube Local Municipality (FS205) ..... 2	36	Munisipale Afbakeningsraad Afbakening van Munisipale Wyke ingevolge die Wet op Plaaslike Regering: Munisipale Strukture, 1998 Munisipaliteit : Mafube Plaaslike Munisipaliteit (FS205) ..... 6

---

**PROVINCIAL NOTICE**

---

**[NO. 36 OF 2010]****MUNICIPAL DEMARCATION BOARD  
DELIMITATION OF MUNICIPAL WARDS IN TERMS OF THE LOCAL  
GOVERNMENT: MUNICIPAL STRUCTURES ACT, 1998****Municipality : Mafube Local Municipality (FS205)**

In terms of Item 5(1) of Schedule 1 to the Local Government: Municipal Structures Act, 1998 (Act No.117 of 1998) ("the Act") the Municipal Demarcation Board hereby publishes its delimitation of wards for the above-mentioned municipality. Particulars of the delimitation are listed in the Schedule.

In terms of Item 5(2) of Schedule 1 to the Act, any person aggrieved by a delimitation may, within 14 days of publication of this notice, submit objections in writing to:

The Municipal Demarcation Board  
Private Bag X28  
**Hatfield**  
0028

Fax: 012-3422480

E-mail: [robert@demarcation.org.za](mailto:robert@demarcation.org.za)

The attached form MDB5 must please be used to object. The form is also available on [www.demarcation.org.za](http://www.demarcation.org.za)

**LANDIWE MAHLANGU**  
**CHAIRPERSON: MDB**

**SCHEDULE**

In terms of Section 18(3) of the Local Government: Municipal Structures Act, 1998 (Act 117 of 1998) the MEC responsible for local government has determined that the municipal council consists of 17 councillors.

After having consulted the Independent Electoral Commission, The Municipal Demarcation Board has delimited the municipality into 9 wards in terms of Schedule 1 to the Act.

The number of registered voters in each ward does not vary by more than fifteen percent from the norm. The norm was determined by dividing the total number of voters on the municipal segment of the national common voters roll, namely 28325 voters on 12 February 2009, by the number of wards in the municipality.

An overview map of the boundary of the municipality, with the boundaries of the wards within the municipal boundary, and a map of each ward are attached. In case of a discrepancy between a map and this schedule, the map will prevail.

The ward numbers, the voting districts and voting stations in each ward, and the number of voters are as follows:

**WARD 1 comprises of a total of 2709 registered voters**

Voting District	Voting Station	Number of Voters
22180014	CORNELIA SCHOOL HALL	1166
22180025	NTSWANATSATSI COMMUNITY HALL	1046
22430180	ARUNDEL	183
22820082	BETHANIE	92
22820150	MAHEM SCHOOL	92
22820318	MANDYVILLE SCHOOL	130

**WARD 2 comprises of a total of 3596 registered voters**

Voting District	Voting Station	Number of Voters
22690065	MFUNDU THUTO SCHOOL	3046
22690076 (Portion)	SAVE GOSPEL CHURCH	550

**WARD 3 comprises of a total of 2891 registered voters**

Voting District	Voting Station	Number of Voters
22780021	QALABOTJHA SECONDARY SCHOOL	2086
22780054	RETSHIDISITSWE SECONDARY SCHOOL	805

**WARD 4 comprises of a total of 2701 registered voters**

Voting District	Voting Station	Number of Voters
22780032	QALABOTJHA COMMUNITY HALL	1684
22780043	TOWN HALL	745
22820240	MOUNT ARARAT	116
22820262	SELEPE SCHOOL	156

**WARD 5 comprises of a total of 3568 registered voters**

Voting District	Voting Station	Number of Voters
22690010	FRANKFORT CORRECTIONAL CENTRE	1596
22690021 (Portion)	MEDUWANENG SCHOOL	1124
22690076 (Portion)	SAVE GOSPEL CHURCH	848

**WARD 6 comprises of a total of 3399 registered voters**

Voting District	Voting Station	Number of Voters
22690021 (Portion)	MEDUWANENG SCHOOL	250
22690032	FALESIZWE SCHOOL	1563
22690054	GUGULETHU SCHOOL	1586

**WARD 7 comprises of a total of 3093 registered voters**

Voting District	Voting Station	Number of Voters
22690043	POELANO SCHOOL	2685
22820138	MPATLE SCHOOL	271
22820239	TEBELLO TSHEPO SCHOOL	137

**WARD 8 comprises of a total of 3396 registered voters**

Voting District	Voting Station	Number of Voters
22760018	MAFAHLANENG COMMUNITY HALL	1981
22760029	TWEELING LIBRARY	1175
22820228	KROONTJIE SCHOOL	136
22820251	MORSALA STOOR	104

**WARD 9 comprises of a total of 2972 registered voters**

Voting District	Voting Station	Number of Voters
22780010	NTATAISE EDUCARE	2181
22780065	TEN APOSTOLIC CHURCH	791

**Important:** This Schedule contains the total number of registered voters on the municipality's segment of the national common voters' roll on 12 February 2009 as provided for in Government Notice No. 750 published in Government Gazette No. 32407 of 15 July 2009. The voting district numbers, the voting district boundaries, voting stations, and the number of voters may change after the registration of voters for the 2011 local elections.

## FORM MDB5

## WARD DELIMITATION

OBJECTION IN TERMS OF ITEM 5(2) OF SCHEDULE 1 TO THE  
LOCAL GOVERNMENT: MUNICIPAL STRUCTURES ACT, 1998

Name of municipality:.....Code:.....

Name of aggrieved person/institution:.....

Contact person in case of an institution:.....

Address:.....

Tel. number:.....Cell number:.....

Email address:.....

I hereby object to the delimitation of the boundaries of the following wards:

WARD NUMBER	REASON/MOTIVATION

I request the Municipal Demarcation Board to consider the following alternative proposals:

Ward number	The ward should comprise of the following voting districts (Provide voting district number and the number of voters in brackets e.g. VD1123456(1500)+VD345678(2500)=4000)	Motivation

I confirm that:

- each cluster of voting districts form a contiguous ward;
- the number of voters in each ward fall within the minimum and maximum of voters allowed per ward;
- the proposed ward boundaries comply, in general, with the criteria.

SIGNATURE \_\_\_\_\_

NAME AND SURNAME \_\_\_\_\_

DATE \_\_\_\_\_

## PROVINSIALE KENNISGEWING

[NO. 36 VAN 2010]

**MUNISIPALE AFBAKENINGSRAAD  
AFBAKENING VAN MUNISIPALE WYKE INGEVOLGE DIE WET OP  
PLAASLIKE REGERING: MUNISIPALE STRUKTURE, 1998****Munisipaliteit : Mafube Plaaslike Munisipaliteit (FS205)**

Ingevolge Item 5(1) van Bylae 1 van die Wet op Plaaslike Regering: Munisipale Strukture, 1998 (Wet No. 117 van 1998) ("die Wet") publiseer die Munisipale Afbakeningsraad hiermee sy afbakening van wyke vir die bogenaaamde munisipaliteit. Besonderhede van die afbakening is vervat in die Bylae.

Ingevolge Item 5(2) van Bylae 1 van die Wet, kan enige persoon wat gegrief is deur 'n afbakening binne 14 dae na publikasie van hierdie kennisgewing skriftelike besware voorlê aan:

Die Munisipale Afbakeningsraad  
Privaatsak X28  
**Hatfield**  
0028

Faks: 012-3422480

E-pos: robert@demarcation.org.za

Die aangehegte vorm MDB5 moet asseblief gebruik word om beswaar aan te teken. Die vorm is ook beskikbaar op [www.demarcation.org.za](http://www.demarcation.org.za)

**LANDIWE MAHLANGU****VOORSITTER: MUNISIPALE AFBAKENINGSRAAD****BYLAE**

Ingevolge Artikel 18(3) van die Wet op Plaaslike Regering: Munisipale Strukture, 1998 (Wet 117 van 1998) het die LUR vir plaaslike regering bepaal dat die munisipale raad bestaan uit 17 raadslede.

Na oorlegpleging met die Onafhanklike Verkiesingskommissie het die Munisipale Afbakeningsraad die munisipaliteit in 9 wyke afgebaken ingevolge Bylae 1 van die Wet.

Die getal geregistreerde kiesers in elke wyk, wyk nie meer as vyftien persent van die norm af nie. Die norm is bepaal deur die getal geregistreerde kiesers op die munisipale segment van die nasionale gemeenskaplike kieserslys, naamlik 28325 kiesers op 12 Februarie 2009, deur die getal wyke in die munisipaliteit te deel.

'n Oorsigkaart van die munisipale grens met die grense van die wyke binne die munisipale grens, en 'n kaart van elke wyk, is aangeheg. Ingeval van 'n verskil tussen 'n kaart en hierdie bylae, sal die kaart geld.

Die wyknommers, die stemdistrikte en stemlokale in elke wyk, en die getal kiesers is as volg:



**WYK 1 het 2709 kiesers**

<b>Stemdistrik</b>	<b>Stemlokaal</b>	<b>Getal kiesers</b>
22180014	CORNELIA SCHOOL HALL	1166
22180025	NTSWANATSATSI COMMUNITY HALL	1046
22430180	ARUNDEL	183
22820082	BETHANIE	92
22820150	MAHEM SCHOOL	92
22820318	MANDYVILLE SCHOOL	130

**WYK 2 het 3596 kiesers**

<b>Stemdistrik</b>	<b>Stemlokaal</b>	<b>Getal kiesers</b>
22690065	MFUNDU THUTO SCHOOL	3046
22690076 (Gedeelte)	SAVE GOSPEL CHURCH	550

**WYK 3 het 2891 kiesers**

<b>Stemdistrik</b>	<b>Stemlokaal</b>	<b>Getal kiesers</b>
22780021	QALABOTJHA SECONDARY SCHOOL	2086
22780054	RETSHIDISITSWE SECONDARY SCHOOL	805

**WYK 4 het 2701 kiesers**

<b>Stemdistrik</b>	<b>Stemlokaal</b>	<b>Getal kiesers</b>
22780032	QALABOTJHA COMMUNITY HALL	1684
22780043	TOWN HALL	745
22820240	MOUNT ARARAT	116
22820262	SELEPE SCHOOL	156

**WYK 5 het 3568 kiesers**

<b>Stemdistrik</b>	<b>Stemlokaal</b>	<b>Getal kiesers</b>
22690010	FRANKFORT CORRECTIONAL CENTRE	1596
22690021 (Gedeelte)	MEDUWANENG SCHOOL	1124
22690076 (Gedeelte)	SAVE GOSPEL CHURCH	848

**WYK 6 het 3399 kiesers**

<b>Stemdistrik</b>	<b>Stemlokaal</b>	<b>Getal kiesers</b>
22690021 (Gedeelte)	MEDUWANENG SCHOOL	250
22690032	FALESIZWE SCHOOL	1563
22690054	GUGULETHU SCHOOL	1586

**WYK 7 het 3093 kiesers**

<b>Stemdistrik</b>	<b>Stemlokaal</b>	<b>Getal kiesers</b>
22690043	POELANO SCHOOL	2685
22820138	MPATLE SCHOOL	271
22820239	TEBELLO TSHEPO SCHOOL	137

**WYK 8 het 3396 kiesers**

<b>Stemdistrik</b>	<b>Stemlokaal</b>	<b>Getal kiesers</b>
22760018	MAFAHLANENG COMMUNITY HALL	1981
22760029	TWEELING LIBRARY	1175
22820228	KROONTJIE SCHOOL	136
22820251	MORSALA STOOR	104

**WYK 9 het 2972 kiesers**

<b>Stemdistrik</b>	<b>Stemlokaal</b>	<b>Getal kiesers</b>
22780010	NTATAISE EDUCARE	2181
22780065	TEN APOSTOLIC CHURCH	791

**Belangrik:** Hierdie Bylae bevat die totale getal geregistreerde kiesers op die munisipaliteit se segment van die nasionale gemeenskaplike kieserslys op 12 Februarie 2009, waarvoor voorsiening gemaak is in Goewermentskennisgewing No. 750 gepubliseer in Staatskoerant No. 32407 van 15 Julie 2009. Die stemdistriknommers, die grense van die stemdistrikte, die stemlokale, en die getal kiesers mag verander na die registrasie van kiesers vir die 2011 plaaslike verkiesings.



## VORM MDB5

## WYKSAFBAKENING

BESWAAR INGEVOLGE ITEM 5(2) VAN BYLAE 1  
VAN DIE WET OP PLAASLIKE REGERING: MUNISIPALE STRUKTURE, 1998

Naam van Munisipaliteit:.....Code:.....

Naam van beswaarde persoon/instelling:.....

Kontak persoon in geval van 'n instelling:.....

Adres:.....

Tel. nommer:..... Selfoonnommer:.....

E-pos adres:.....

Hiermee teken ek beswaar aan teen die afbakening van die grense van die volgende wyke:

WYK NOMMER	REDE/MOTIVERING

Ek versoek die Munisipale Afbakeningsraad om die volgende alternatiewe voorstelle te oorweeg:

Wyk nommer	Die wyk moet bestaan uit die volgende stembedistrikte: (Voorsien die stembedistriktnommer en die getal geregistreerde kiesers as volg $VD1123456(1500)+VD345678(2500)=4000$ )	Motivering

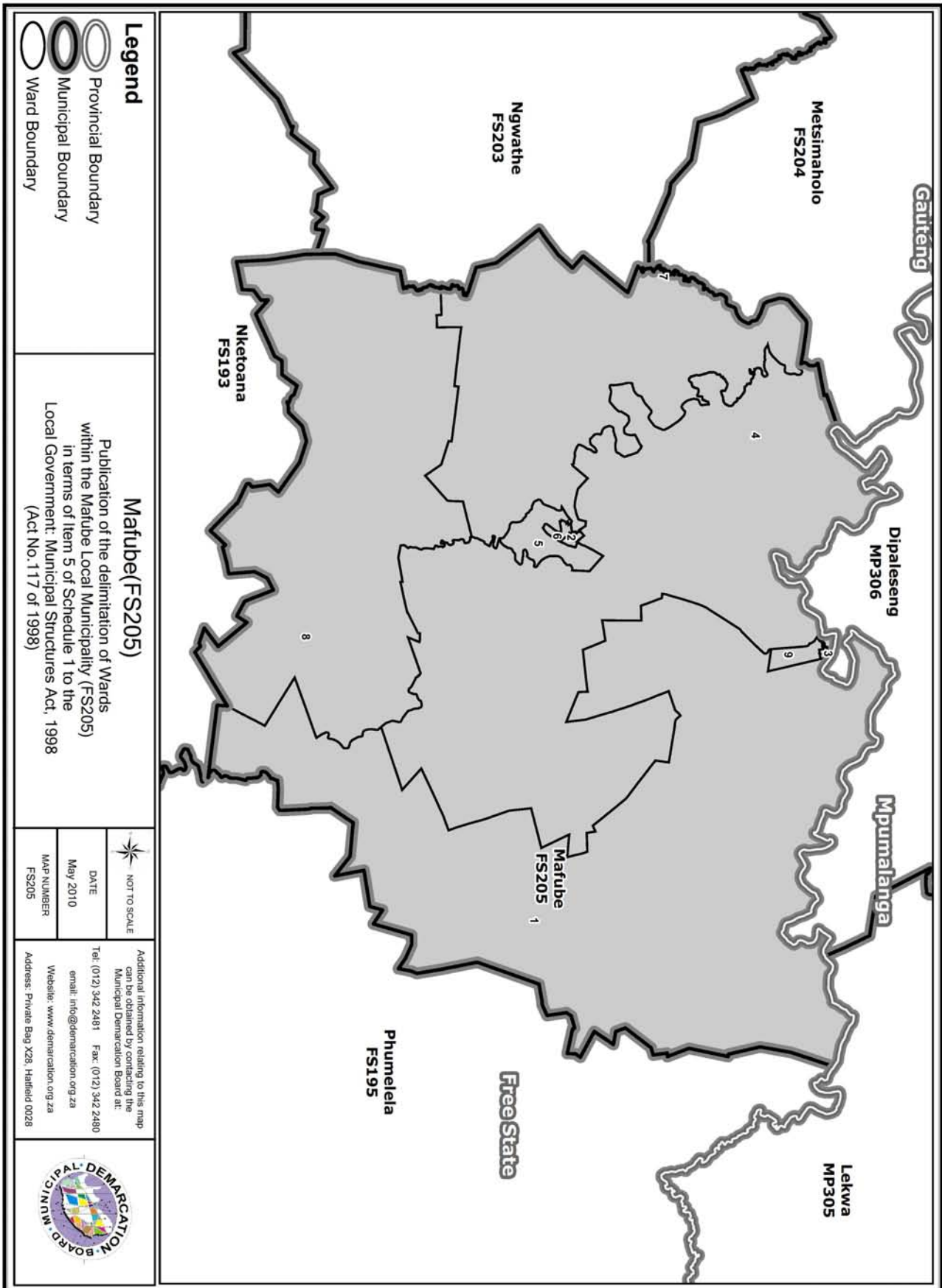
Ek bevestig dat:

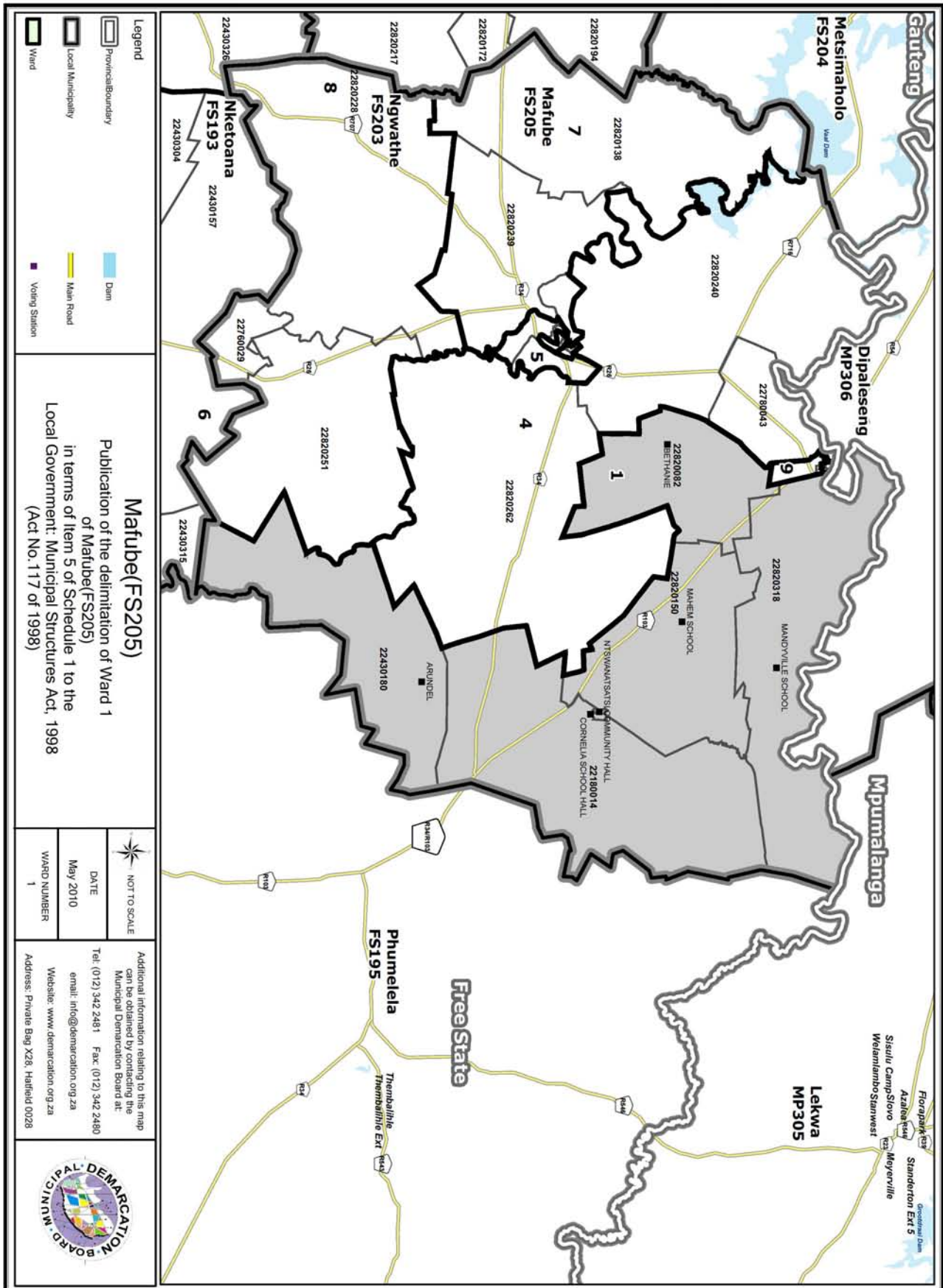
- die saamgevoegde stembedistrikte vorm 'n aaneenlopende wyk;
- die getal kiesers in elke wyk is binne die minimum en maksimum getal wat per wyk toegelaat word;
- die voorgestelde wyke voldoen in die algemeen aan die kriteria.

\_\_\_\_\_  
HANDTEKENING

\_\_\_\_\_  
NAAM EN VAN

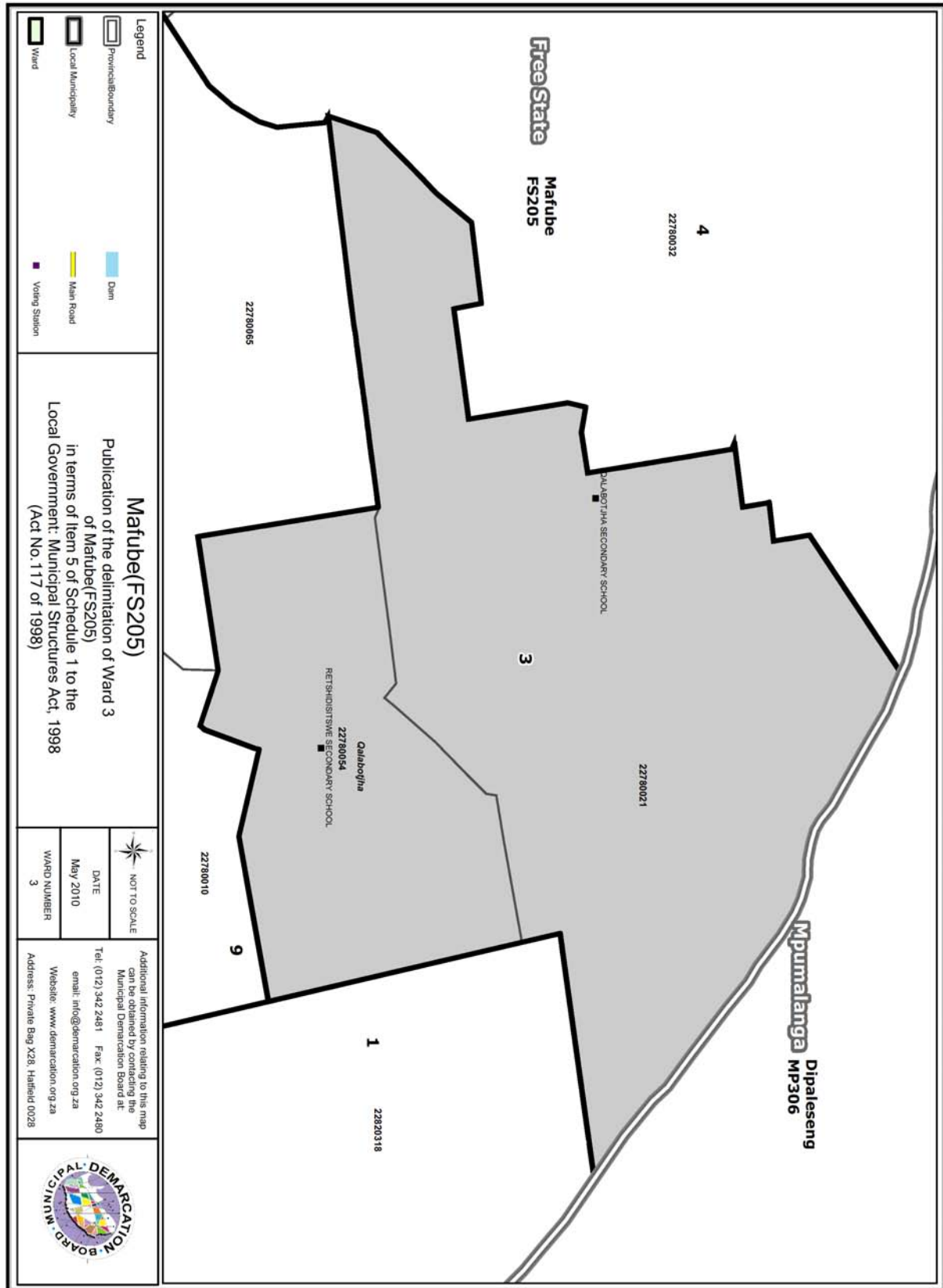
\_\_\_\_\_  
DATUM

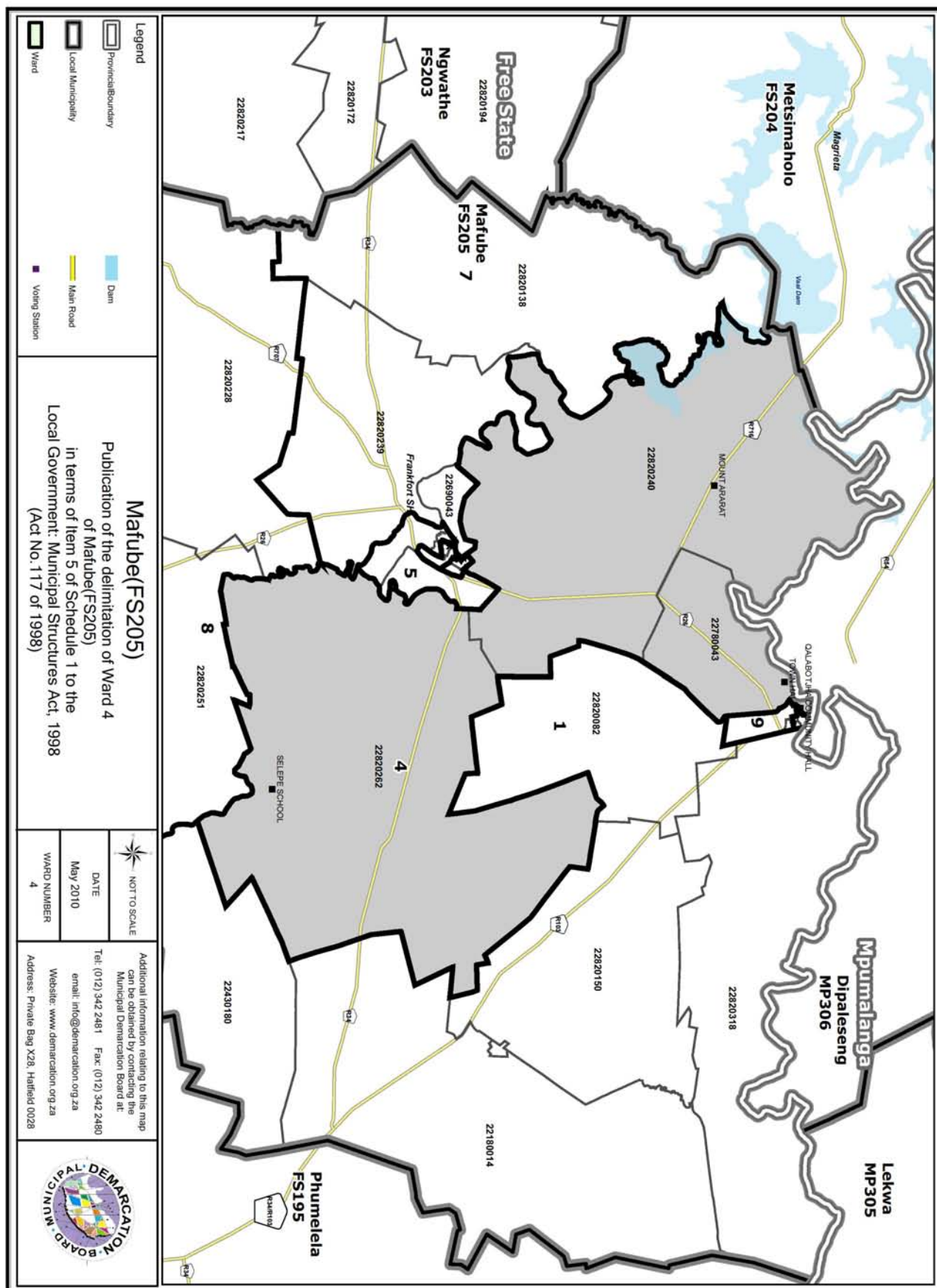




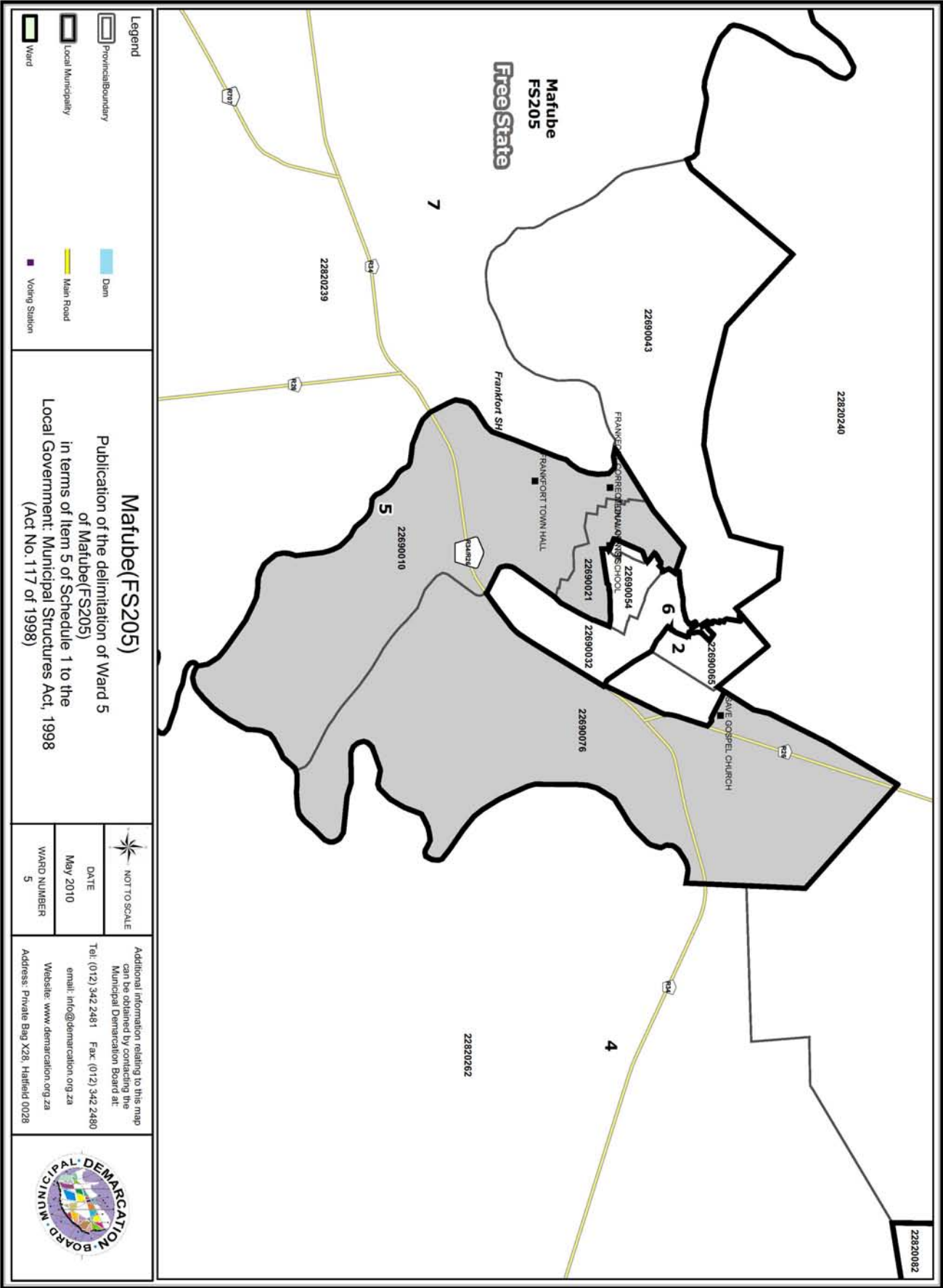


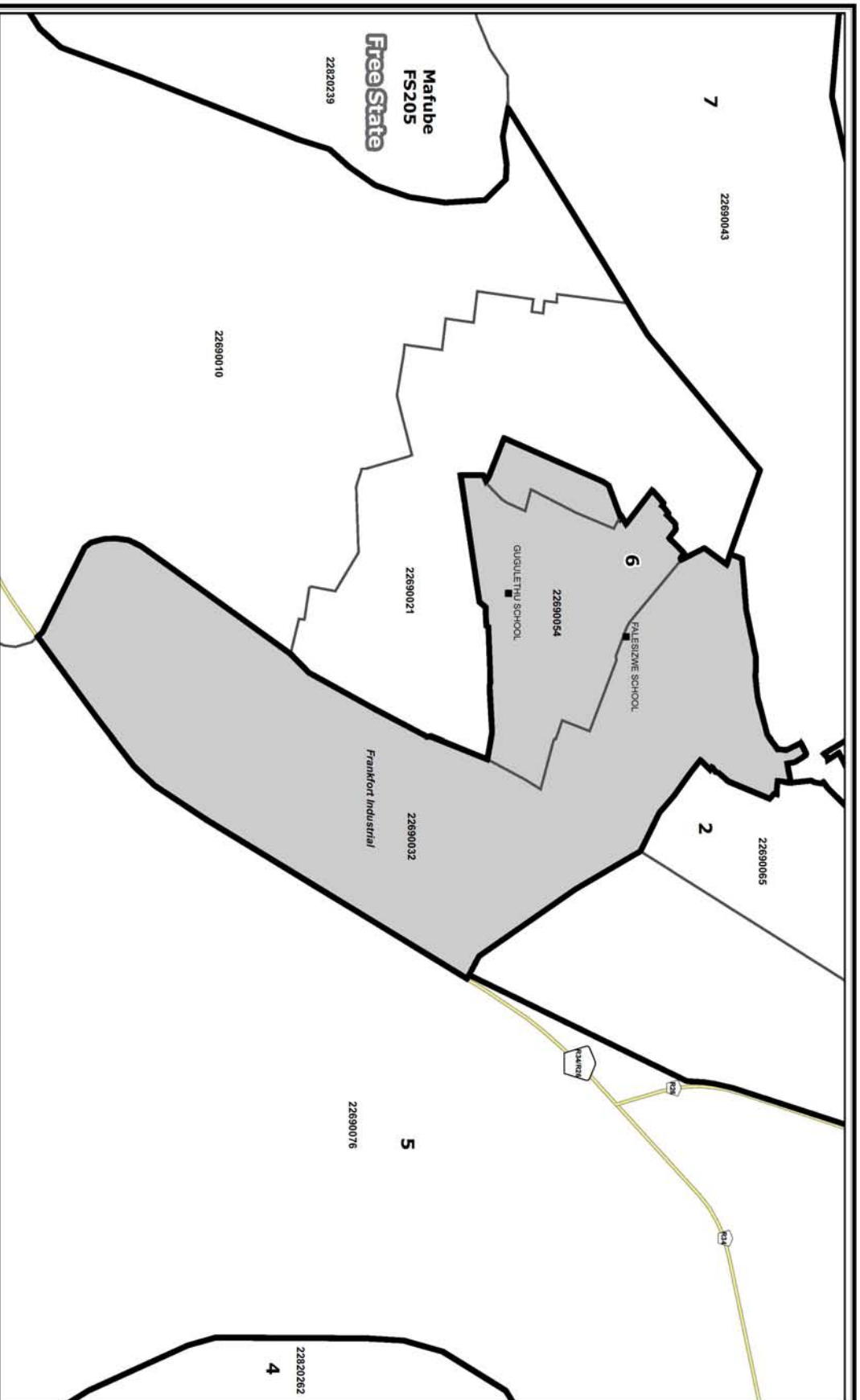












- Legend**
- Provincial Boundary
  - Local Municipality
  - Ward
  - Dam
  - Main Road
  - Voting Station

**Mafube (FS205)**  
Publication of the delimitation of Ward 6  
of Mafube (FS205)  
in terms of Item 5 of Schedule 1 to the  
Local Government: Municipal Structures Act, 1998  
(Act No. 117 of 1998)

NOT TO SCALE

DATE  
May 2010

WARD NUMBER  
6

Additional information relating to this map  
can be obtained by contacting the  
Municipal Demarcation Board at:  
Tel: (012) 342 2481 Fax: (012) 342 2480  
email: [info@demarcation.org.za](mailto:info@demarcation.org.za)  
Website: [www.demarcation.org.za](http://www.demarcation.org.za)  
Address: Private Bag X28, Hatfield 0028



