

# Provincial Gazette

Free State Province

Published by Authority



# Provinsiale Koerant

Provinsie Vrystaat

Uitgegee op Gesag

## SPECIAL

NO. 60	MONDAY, 20 JULY 2015	NO. 60	MAANDAG, 20 JULIE 2015
<b>GENERAL NOTICE</b>		<b>ALGEMENE KENNISGEWING</b>	
21	Municipal Demarcation Board: Delimitation of Municipal Wards in Terms of the Local Government: Municipal Structures Act, 1998	21	Munisipale Afbakeningsraad: Afbakening Van Munisipale Wyke Ingevolge die Wet op Plaaslike Regering: Munisipale Strukture, 1998
<b>Ngwathe Local Municipality</b>	<b>FS203.....2</b>	<b>Ngwathe Plaaslike Munisipaliteit</b>	<b>FS203 .....2</b>

GENERAL NOTICE / ALGEMENE KENNISGEWING

[NO.21 OF 2015]

<p style="text-align: center;"><b>MUNICIPAL DEMARCATION BOARD: DELIMITATION OF MUNICIPAL WARDS IN TERMS OF THE LOCAL GOVERNMENT: MUNICIPAL STRUCTURES ACT, 1998</b></p> <p style="text-align: center;"><b>Ngwathe Local Municipality FS203</b></p> <p>In terms of Item 5 (1) of Schedule 1 to the Local Government: Municipal Structures Act, 1998 (Act No. 117 of 1998) (the Act) the Municipal Demarcation Board hereby publishes its delimitation of wards for the above- mentioned municipality. Particulars of the delimitation are listed in the Schedule.</p> <p>In terms of Item 5 (2) of Schedule 1 to the Act, any person aggrieved by the delimitation may, within 14 days of publication of this notice, submit objections in writing to:</p> <p>The Municipal Demarcation Board Private Bag X123 Centurion 0046</p> <p>Fax: 086 5248643 Email: wards@demarcation.org.za</p> <p>The attached form MDB 5 must please be used to object. The form is also available on <a href="http://www.demarcation.org.za">www.demarcation.org.za</a></p> <p><b>MS JANE THUPANA CHAIRPERSON: MUNICIPAL DEMARCATION BOARD</b></p>	<p style="text-align: center;"><b>MUNISIPALE AFBAKENINGSRAAD: AFBAKENING VAN MUNISIPALE WYKE INGEVOLGE DIE WET OP PLAASLIKE REGERING: MUNISIPALE STRUKTURE, 1998</b></p> <p style="text-align: center;"><b>Ngwathe Plaaslike Munisipaliteit FS203</b></p> <p>Ingevolge Item 5(1) van Bylae 1 van die Wet op Plaaslike Regering: Munisipale Strukture, 1998 (Wet No. 117 van 1998) (die Wet) publiseer die Munisipale Afbakeningsraad hiermee sy afbakening van wyke vir die bogenaaamde munisipaliteit. Besonderhede van die afbakening is vervat in die Bylae.</p> <p>Ingevolge item 5(2) van Bylae 1 van die Wet, kan enige persoon wat gegrief is deur 'n afbakening binne 14 dae vanaf publikasie van hierdie kennisgewing skriftelike besware voorlê aan:</p> <p>Die Munisipale Afbakeningsraad Privaatsak X123 Centurion 0046</p> <p>Faks: 086 5248643 E-pos: wards@demarcation.org.za</p> <p>Die aangehegte vorm MDB5 moet asseblief gebruik word om beswaar aan te teken. Die vorm is ook beskikbaar op <a href="http://www.demarcation.org.za">www.demarcation.org.za</a></p> <p><b>MS JANE THUPANA VOORSITTER: MUNISIPALE AFBAKENINGSRAAD</b></p>
<p style="text-align: center;"><b>SCHEDULE</b></p> <p>In terms of section 18(3) of the Local Government: Municipal Structures Act, 1998 (Act 117 of 1998), the MEC responsible for local government has determined that the municipal council consists of <b>36</b> councillors.</p> <p>After having consulted the Independent Electoral Commission, The Municipal Demarcation Board has delimited the municipality into <b>18</b> wards in terms of Schedule 1 of the Act.</p> <p>The number of registered voters in each ward does not vary by more than fifteen percent from the norm. The norm was determined by dividing the total number of voters on the municipal segment of the national common voters roll, namely <b>66354</b> voters on 5 March 2014, by the number of wards in the municipality.</p> <p>An overview map of the boundary of the municipality, with the boundaries of the wards within the municipality, and a map of each ward are attached. In case of a discrepancy between the map and this schedule, the map will prevail.</p> <p>The ward numbers, the voting districts and voting stations in each ward, and the number of voters are as follows:</p>	<p style="text-align: center;"><b>BYLAE</b></p> <p>Ingevolge artikel 18(3) van die Wet op Plaaslike Regering: Munisipale Strukture, 1998 (Wet 117 van 1998) het die LUR vir plaaslike regering bepaal dat die munisipale raad bestaan uit <b>36</b> raadslede.</p> <p>Na oorlegpleging met die Onafhanklike Verkiesingskommissie het die Munisipale Afbakeningsraad die munisipaliteit in <b>18</b> wyke afgebaken ingevolge Bylae 1 van die Wet.</p> <p>Die getal geregistreerde kiesers in elke wyk, wyk nie meer as vyftien persent van die norm af nie. Die norm is bepaal deur die getal geregistreerde kiesers op die munisipale segment van die nasionale gemeenskaplike kieserslys, naamlik <b>66354</b> kiesers op 5 Maart 2014, deur die getal wyke in die munisipaliteit te deel.</p> <p>'n Oorsigkaart van die munisipale grens met die grense van die wyke binne die munisipale grens, en 'n kaart van elke wyk, is aangeheg. Ingeval van 'n verskil tussen 'n kaart en hierdie bylae, sal die kaart geld.</p> <p>Die wyknommers, die stemdistrikte en stemlokale in elke wyk, en die getal kiesers is as volg:</p>

<b>Ward 1</b>	<b>comprises of a total of</b>	3186	<b>registered voters</b>	
<b>Wyk 1</b>	<b>bestaan uit 'n totaal van</b>	3186	<b>geregistreeerde kiesers</b>	
<b>MIN VOTERS/KIESERS:</b>	3133		<b>NORM:</b> 3686	<b>MAX VOTERS/KIESERS</b> 4239

<b>VOTING DISTRICT No.</b>	<b>VOTING STATION NAME</b>	<b>NUMBER OF VOTERS</b>	<b>SPLIT VD</b>
<b>STEMDISTRIK No</b>	<b>STEMLOKAAL NAAM</b>	<b>GETAL KIESERS</b>	<b>VERDEELDE SD</b>
22820172	BLOEMHOF SCHOOL	161	
22810126	HONINGKLOOF FARM	149	
22820273	HLWEKO SCHOOL	32	
22820217	ARCADIA FARM SCHOOL	156	
22820206	STRATFORD SCHOOL	190	
22810137	KOPPIES FARMERS WINKEL	183	
22820127	KOPJESLAAGTE FARM	72	
22820116	PALMIETKUIL FARM SHED	195	
22820105	GOTTENBURG HEILBRON TEMPORARY	135	
22820093	VYANDSVLEI TOWER SERVICE STATION	153	
22700067	SANDERSVILLE HALL	1408	
22820194	DIPKRAAL SCHOOL	235	
22820183	THABANTWA SCHOOL	117	

<b>Ward 2</b>	<b>comprises of a total of</b>	3407	<b>registered voters</b>	
<b>Wyk 2</b>	<b>bestaan uit 'n totaal van</b>	3407	<b>geregistreeerde kiesers</b>	
<b>MIN VOTERS/KIESERS:</b>	3133		<b>NORM:</b> 3686	<b>MAX VOTERS/KIESERS</b> 4239

<b>VOTING DISTRICT No.</b>	<b>VOTING STATION NAME</b>	<b>NUMBER OF VOTERS</b>	<b>SPLIT VD</b>
<b>STEMDISTRIK No</b>	<b>STEMLOKAAL NAAM</b>	<b>GETAL KIESERS</b>	<b>VERDEELDE SD</b>
22700034	PHIRITONA TOWN HALL	1236	Yes/Ja
22700113	PHIRIHADI PRIMARY SCHOOL	690	
22700023	HEILBRON TOWN HALL	1481	

<b>Ward 3</b>	<b>comprises of a total of</b>	3134	<b>registered voters</b>	
<b>Wyk 3</b>	<b>bestaan uit 'n totaal van</b>	3134	<b>geregistreeerde kiesers</b>	
<b>MIN VOTERS/KIESERS:</b>	3133		<b>NORM:</b> 3686	<b>MAX VOTERS/KIESERS</b> 4239

<b>VOTING DISTRICT No.</b>	<b>VOTING STATION NAME</b>	<b>NUMBER OF VOTERS</b>	<b>SPLIT VD</b>
<b>STEMDISTRIK No</b>	<b>STEMLOKAAL NAAM</b>	<b>GETAL KIESERS</b>	<b>VERDEELDE SD</b>
22700056	KEARABETSWE PRIMARY SCHOOL	1821	
22700090	TEMPORARY VOTING STATION (PHAHAMENG)	947	
22700045	SEDIBA THUTO HIGH SCHOOL	366	Yes/Ja

<b>Ward 4</b>	<b>comprises of a total of</b>	3134	<b>registered voters</b>	
<b>Wyk 4</b>	<b>bestaan uit 'n totaal van</b>	3134	<b>geregistreeerde kiesers</b>	
<b>MIN VOTERS/KIESERS:</b>	3133		<b>NORM:</b> 3686	<b>MAX VOTERS/KIESERS</b> 4239

<b>VOTING DISTRICT No.</b>	<b>VOTING STATION NAME</b>	<b>NUMBER OF VOTERS</b>	<b>SPLIT VD</b>
<b>STEMDISTRIK No</b>	<b>STEMLOKAAL NAAM</b>	<b>GETAL KIESERS</b>	<b>VERDEELDE SD</b>
22700012	PHIRITONA PUBLIC LIBRARY	1139	

22700089	MOUNTAIN-VIEW GROUND	1014	
22700102	UNITING REFORMED CHURCH	743	
22700034	PHIRITONA TOWN HALL	238	Yes/Ja

**Ward 5** comprises of a total of 3625 registered voters  
**Wyk 5** bestaan uit 'n totaal van 3625 geregistreeerde kiesers  
**MIN VOTERS/KIESERS:** 3133 **NORM:** 3686 **MAX VOTERS/KIESERS** 4239

VOTING DISTRICT No. STEMDISTRIK No	VOTING STATION NAME STEMLOKAAL NAAM	NUMBER OF VOTERS GETAL KIESERS	SPLIT VD VERDEELDE SD
22820307	TEMPORARY VOTING STATION (MOHEREPA OPEN SP)	1374	
22820295	TEMPORARY VOTING STATION (AIRPORT OPEN SPAC)	1091	
22700045	SEDIBA THUTO HIGH SCHOOL	1160	Yes/Ja

**Ward 6** comprises of a total of 4132 registered voters  
**Wyk 6** bestaan uit 'n totaal van 4132 geregistreeerde kiesers  
**MIN VOTERS/KIESERS:** 3133 **NORM:** 3686 **MAX VOTERS/KIESERS** 4239

VOTING DISTRICT No. STEMDISTRIK No	VOTING STATION NAME STEMLOKAAL NAAM	NUMBER OF VOTERS GETAL KIESERS	SPLIT VD VERDEELDE SD
22740050	BOITLAMO SECONDARY SCHOOL	1725	
22740061	NEW CATHOLIC CHURCH	2407	

**Ward 7** comprises of a total of 4230 registered voters  
**Wyk 7** bestaan uit 'n totaal van 4230 geregistreeerde kiesers  
**MIN VOTERS/KIESERS:** 3133 **NORM:** 3686 **MAX VOTERS/KIESERS** 4239

VOTING DISTRICT No. STEMDISTRIK No	VOTING STATION NAME STEMLOKAAL NAAM	NUMBER OF VOTERS GETAL KIESERS	SPLIT VD VERDEELDE SD
22740173	ZUMA OPEN SPACE - TVS	986	
22800103	MOOIHOEK FARM SCHOOL	118	
22740151	TAMBO OPEN SPACE	1545	
22740195	PARYS HOSPITAL TVL	222	
22800114	WEIVELD AGRICULTURE AND HOTEL SCHOOL	183	
22740049	TOKOLOHO OPEN SPACE- TVS	1086	Yes/Ja
22800125	BOHOLONG FARM SCHOOL	90	

**Ward 8** comprises of a total of 3740 registered voters  
**Wyk 8** bestaan uit 'n totaal van 3740 geregistreeerde kiesers  
**MIN VOTERS/KIESERS:** 3133 **NORM:** 3686 **MAX VOTERS/KIESERS** 4239

VOTING DISTRICT No. STEMDISTRIK No	VOTING STATION NAME STEMLOKAAL NAAM	NUMBER OF VOTERS GETAL KIESERS	SPLIT VD VERDEELDE SD
22810216	NOKANAPEDI FARM	120	
22740016	NG KERK WES SAAL	202	Yes/Ja
22810047	SERFONTEIN FARM SCHOOL	151	
22800237	INLANDSEE FARM	97	

-----

22810104	ROOIWAL FARM	310	
22810092	SEIPONE FARM	211	
22790022	VREDEFORT TOWN HALL	1100	Yes/Ja
22810148	TABOR FARM SCHOOL	157	
22810115	ROOIPORTDAM FARM	154	
22810069	OUERSGIFT FARM	143	
22790011	MOKWALLO PUBLIC PRIMARY SCHOOL	1095	Yes/Ja

<b>Ward 9</b>	<b>comprises of a total of</b>	<b>3422</b>	<b>registered voters</b>
<b>Wyk 9</b>	<b>bestaan uit 'n totaal van</b>	<b>3422</b>	<b>geregistreeerde kiesers</b>
<b>MIN VOTERS/KIESERS:</b>	<b>3133</b>	<b>NORM: 3686</b>	<b>MAX VOTERS/KIESERS</b> 4239

VOTING DISTRICT No. STEMDISTRIK No	VOTING STATION NAME STEMLOKAAL NAAM	NUMBER OF VOTERS GETAL KIESERS	SPLIT VD VERDEELDE SD
22740049	TOKOLOHO OPEN SPACE- TVS	60	Yes/Ja
22740140	NTSHWEPHEPA PRIMERE SKOOL	1753	
22740139	BARNARD MOLOKOANE SCHOOL	1609	

<b>Ward 10</b>	<b>comprises of a total of</b>	<b>4239</b>	<b>registered voters</b>
<b>Wyk 10</b>	<b>bestaan uit 'n totaal van</b>	<b>4239</b>	<b>geregistreeerde kiesers</b>
<b>MIN VOTERS/KIESERS:</b>	<b>3133</b>	<b>NORM: 3686</b>	<b>MAX VOTERS/KIESERS</b> 4239

VOTING DISTRICT No. STEMDISTRIK No	VOTING STATION NAME STEMLOKAAL NAAM	NUMBER OF VOTERS GETAL KIESERS	SPLIT VD VERDEELDE SD
22740128	PHEHELLANG SECONDARY SCHOOL	1467	
22740038	TUMAHOLE COMMUNITY HALL	1322	Yes/Ja
22740072	TSWELOPELE PRE-SCHOOL	1450	

<b>Ward 11</b>	<b>comprises of a total of</b>	<b>3209</b>	<b>registered voters</b>
<b>Wyk 11</b>	<b>bestaan uit 'n totaal van</b>	<b>3209</b>	<b>geregistreeerde kiesers</b>
<b>MIN VOTERS/KIESERS:</b>	<b>3133</b>	<b>NORM: 3686</b>	<b>MAX VOTERS/KIESERS</b> 4239

VOTING DISTRICT No. STEMDISTRIK No	VOTING STATION NAME STEMLOKAAL NAAM	NUMBER OF VOTERS GETAL KIESERS	SPLIT VD VERDEELDE SD
22740162	LETAMO SPORTS GROUND	300	Yes/Ja
22740083	AHA-SETJHABA PRIMARY SCHOOL	1249	
22740094	TEMPORARY VOTING STATION (SAINT JOHN CHURCH)	1660	

<b>Ward 12</b>	<b>comprises of a total of</b>	<b>3857</b>	<b>registered voters</b>
<b>Wyk 12</b>	<b>bestaan uit 'n totaal van</b>	<b>3857</b>	<b>geregistreeerde kiesers</b>
<b>MIN VOTERS/KIESERS:</b>	<b>3133</b>	<b>NORM: 3686</b>	<b>MAX VOTERS/KIESERS</b> 4239

VOTING DISTRICT No. STEMDISTRIK No	VOTING STATION NAME STEMLOKAAL NAAM	NUMBER OF VOTERS GETAL KIESERS	SPLIT VD VERDEELDE SD
22740184	AME ST LEONARD CHURCH	535	
22740117	PARYS TOWN HALL	1511	
22740027	PARYS LIBRARY	1776	Yes/Ja

-----

22740038	TUMAHOLE COMMUNITY HALL	35	Yes/Ja
<b>Ward 13</b>	<b>comprises of a total of</b>	<b>3142</b>	<b>registered voters</b>
<b>Wyk 13</b>	<b>bestaan uit 'n totaal van</b>	<b>3142</b>	<b>geregistreeerde kiesers</b>
<b>MIN VOTERS/KIESERS:</b>	<b>3133</b>	<b>NORM: 3686</b>	<b>MAX VOTERS/KIESERS</b> 4239
<b>VOTING DISTRICT No.</b>	<b>VOTING STATION NAME</b>	<b>NUMBER OF VOTERS</b>	<b>SPLIT VD</b>
<b>STEMDISTRIK No</b>	<b>STEMLOKAAL NAAM</b>	<b>GETAL KIESERS</b>	<b>VERDEELDE SD</b>
22740162	LETAMO SPORTS GROUND	1161	
22740106	SCHONKENVILLE HALL	1681	
22740027	PARYS LIBRARY	300	
<b>Ward 14</b>	<b>comprises of a total of</b>	<b>4136</b>	<b>registered voters</b>
<b>Wyk 14</b>	<b>bestaan uit 'n totaal van</b>	<b>4136</b>	<b>geregistreeerde kiesers</b>
<b>MIN VOTERS/KIESERS:</b>	<b>3133</b>	<b>NORM: 3686</b>	<b>MAX VOTERS/KIESERS</b> 4239
<b>VOTING DISTRICT No.</b>	<b>VOTING STATION NAME</b>	<b>NUMBER OF VOTERS</b>	<b>SPLIT VD</b>
<b>STEMDISTRIK No</b>	<b>STEMLOKAAL NAAM</b>	<b>GETAL KIESERS</b>	<b>VERDEELDE SD</b>
22790022	VREDEFORT TOWN HALL	32	Yes/Ja
22740016	NG KERK WES SAAL	1000	Yes/Ja
22790033	TATAISO PRIMARY SCHOOL	1962	
22790044	AFM CHURCH	1142	
<b>Ward 15</b>	<b>comprises of a total of</b>	<b>4239</b>	<b>registered voters</b>
<b>Wyk 15</b>	<b>bestaan uit 'n totaal van</b>	<b>4239</b>	<b>geregistreeerde kiesers</b>
<b>MIN VOTERS/KIESERS:</b>	<b>3133</b>	<b>NORM: 3686</b>	<b>MAX VOTERS/KIESERS</b> 4239
<b>VOTING DISTRICT No.</b>	<b>VOTING STATION NAME</b>	<b>NUMBER OF VOTERS</b>	<b>SPLIT VD</b>
<b>STEMDISTRIK No</b>	<b>STEMLOKAAL NAAM</b>	<b>GETAL KIESERS</b>	<b>VERDEELDE SD</b>
22740016	NG KERK WES SAAL	1554	Yes/Ja
22790123	S. S. PAKI SECONDARY SCHOOL	1876	
22790011	MOKWALLO PUBLIC PRIMARY SCHOOL	809	Yes/J
<b>Ward 16</b>	<b>comprises of a total of</b>	<b>3682</b>	<b>registered voters</b>
<b>Wyk 16</b>	<b>bestaan uit 'n totaal van</b>	<b>3682</b>	<b>geregistreeerde kiesers</b>
<b>MIN VOTERS/KIESERS:</b>	<b>3133</b>	<b>NORM: 3686</b>	<b>MAX VOTERS/KIESERS</b> 4239
<b>VOTING DISTRICT No.</b>	<b>VOTING STATION NAME</b>	<b>NUMBER OF VOTERS</b>	<b>SPLIT VD</b>
<b>STEMDISTRIK No</b>	<b>STEMLOKAAL NAAM</b>	<b>GETAL KIESERS</b>	<b>VERDEELDE SD</b>
22710046	REBATLA THUTO SECONDARY SCHOOL	1515	
22710024	IPATLELENG PRIMARY SCHOOL	2167	Yes/Ja
<b>Ward 17</b>	<b>comprises of a total of</b>	<b>4217</b>	<b>registered voters</b>
<b>Wyk 17</b>	<b>bestaan uit 'n totaal van</b>	<b>4217</b>	<b>geregistreeerde kiesers</b>
<b>MIN VOTERS/KIESERS:</b>	<b>3133</b>	<b>NORM: 3686</b>	<b>MAX VOTERS/KIESERS</b> 4239
<b>VOTING DISTRICT No.</b>	<b>VOTING STATION NAME</b>	<b>NUMBER OF VOTERS</b>	<b>SPLIT VD</b>
<b>STEMDISTRIK No</b>	<b>STEMLOKAAL NAAM</b>	<b>GETAL KIESERS</b>	<b>VERDEELDE SD</b>
22710013	KOPPIES COMMUNITY HALL	1083	
22710024	IPATLELENG PRIMARY SCHOOL	76	
22710035	KWAKWATSI HALL	1686	

22710057 METHODIST CHURCH 1372

**Ward 18** comprises of a total of 3623 registered voters  
**Wyk 18** bestaan uit 'n totaal van 3623 geregistreerde kiesers

**MIN VOTERS/KIESERS:** 3133 **NORM:** 3686 **MAX VOTERS/KIESERS** 4239

VOTING DISTRICT No. STEMDISTRIK No	VOTING STATION NAME STEMLOKAAL NAAM	NUMBER OF VOTERS GETAL KIESERS	SPLIT VD VERDEELDE SD
22680020	EDENVILLE HIGH HALL	443	
22680019	NGWATHE SECONDARY SCHOOL	1938	
22430292	SERNICK FARM SCHOOL	118	
22680031	NGWATHE COMMUNITY HALL	1124	

PLEASE USE ADDITIONAL PAGE SHOULD THE ALTERNATIVE PROPOSALS BE MORE THAN THE FOLLOWING SPACE AVAILABLE

**FORM / VORM MDB5**

**WARD DELIMITATION / WYKSAFBAKENING**

**OBJECTION IN TERMS OF ITEM 5(2) OF SCHEDULE 1 TO THE LOCAL GOVERNMENT: MUNICIPAL STRUCTURES ACT, 1998**

**BESWAAR INGEVOLGE ITEM 5(2) VAN BYLAE 1 VAN DIE WET OP  
 PLAASLIKE REGERING: MUNISIPALE STRUKTURE, 1998**

Name of municipality / Naam van Munisipaliteit:.....

Code / Kode: .....

Name of aggrieved person or institution / Naam van beswaarde person / instelling :

.....

Contact person in case of an institution / Kontakpersoon in geval van 'n instelling :

.....

Address / Adres :.....

Tel. number / Tel.nommer :..... Cell number / Selfoonnommer:.....

Email address / Epos adres :.....

I hereby object to the delimitation of the boundaries of the following wards:

WARD NUMBER / WYK NOMMER	REASON / MOTIVATION

I request the Municipal Demarcation Board to consider the following alternative proposals/ Ek versoek dat die volgende alternatiewe voorstel oorweeg word:

.....

Ward number / Wyknommer	The ward should comprise of the following voting districts (Provide voting district number and the number of voters in brackets e.g. VD1123456(1500)+VD345678(2500)=4000  Die wyk moet bestaan uit die volgende stemdistrikte (voorsien stemdistriksnommers en die aantal geregistreerde kiesers, byvoorbeeld: VD1123456(1500)+VD345678(2500)=4000	Motivation / Motiveering

I confirm that / Ek bevestig dat:

- each cluster of voting districts form a contiguous ward / die saamgevoegde stemdistrikte vorm 'n aaneenlopende wyk;
- the number of voters in each ward fall within the minimum and maximum of voters allowed per ward / die getal kiesers in elke wyk is binne die minimum en maksimum getal wat per wyk toegelaat word;
- the proposed ward boundaries comply, in general, with the criteria / die voorgestelde wyk voldoen in die algemeen aan die kriteria.

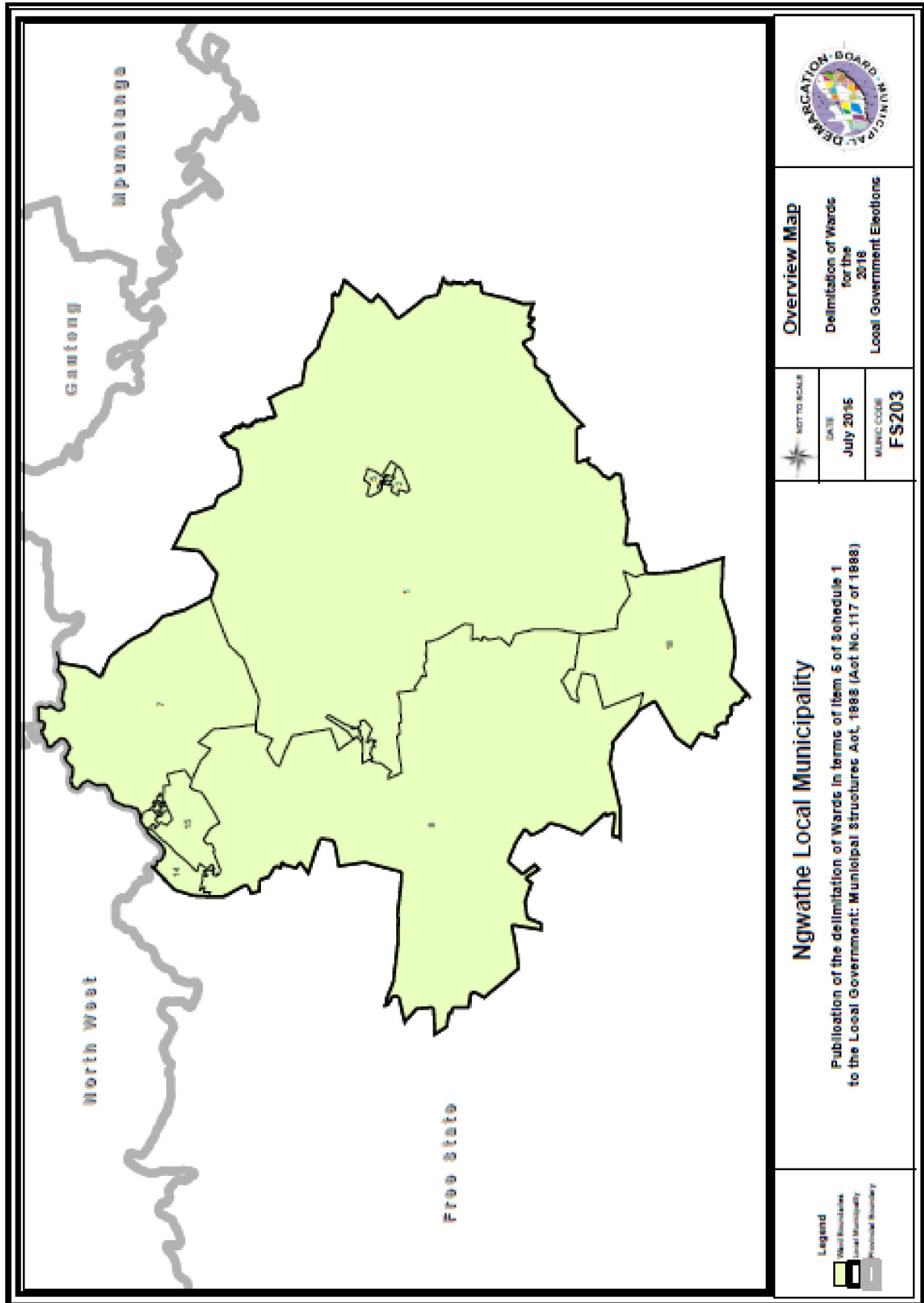
\_\_\_\_\_  
SIGNATURE

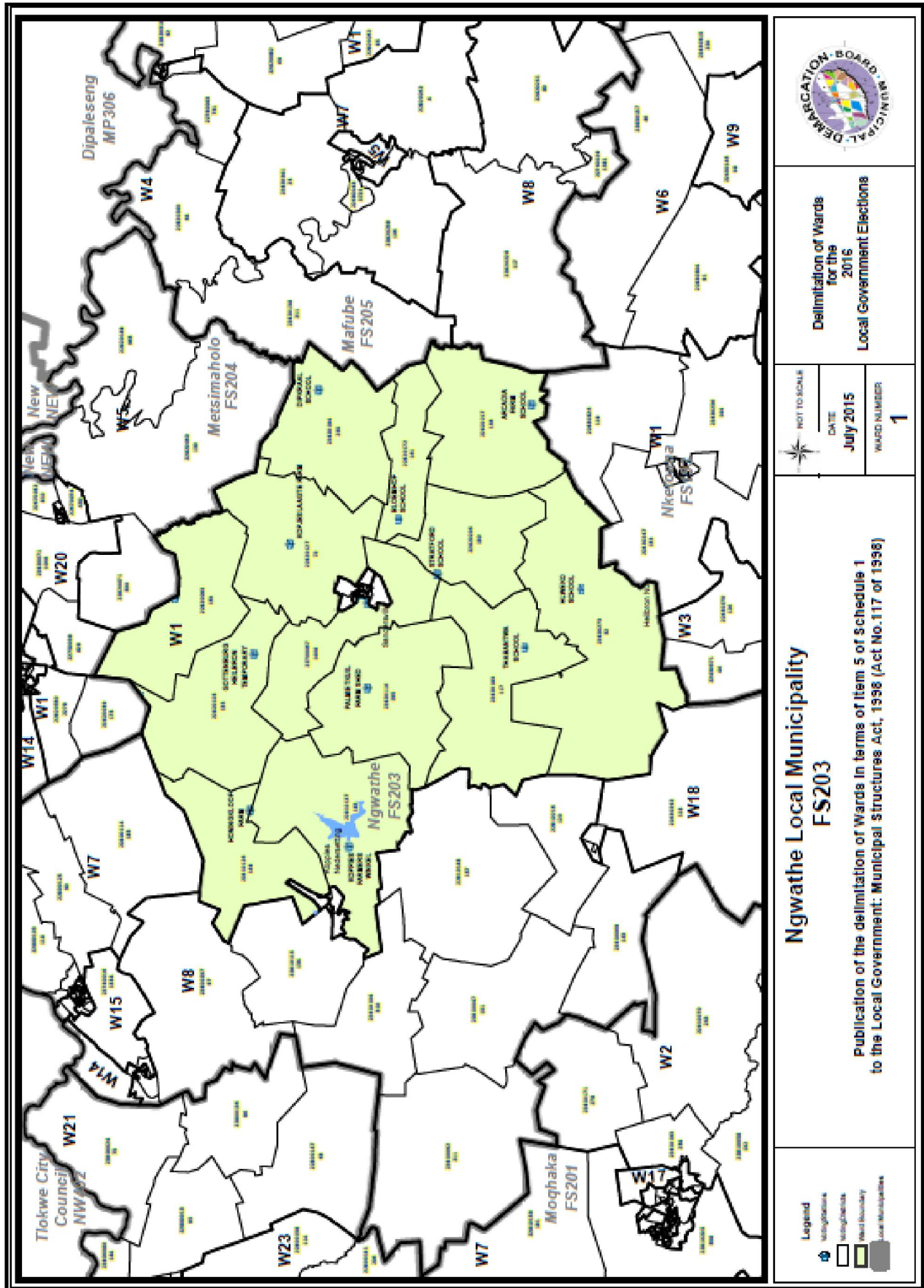
\_\_\_\_\_  
NAME AND SURNAME


\_\_\_\_\_  
DATE

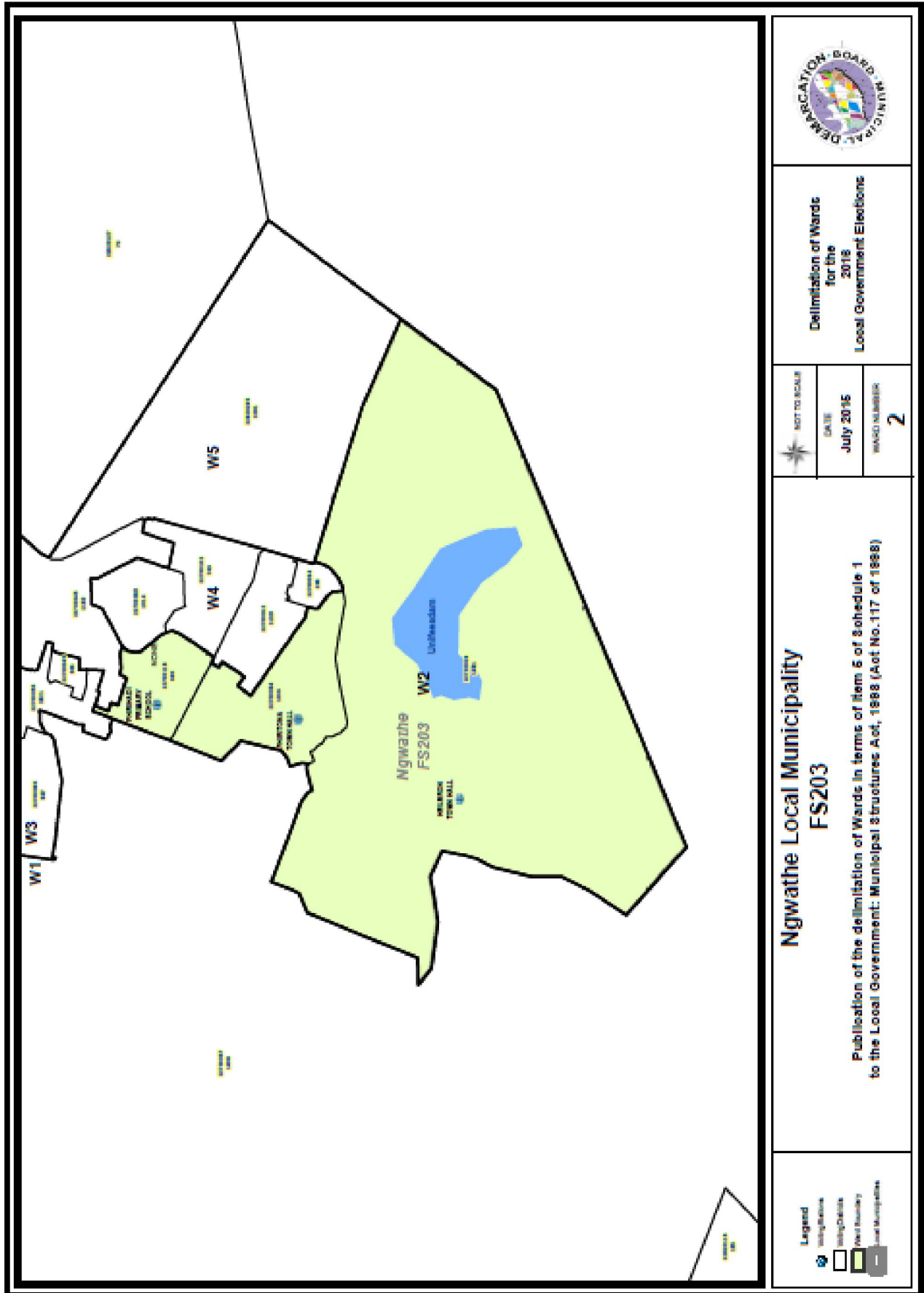


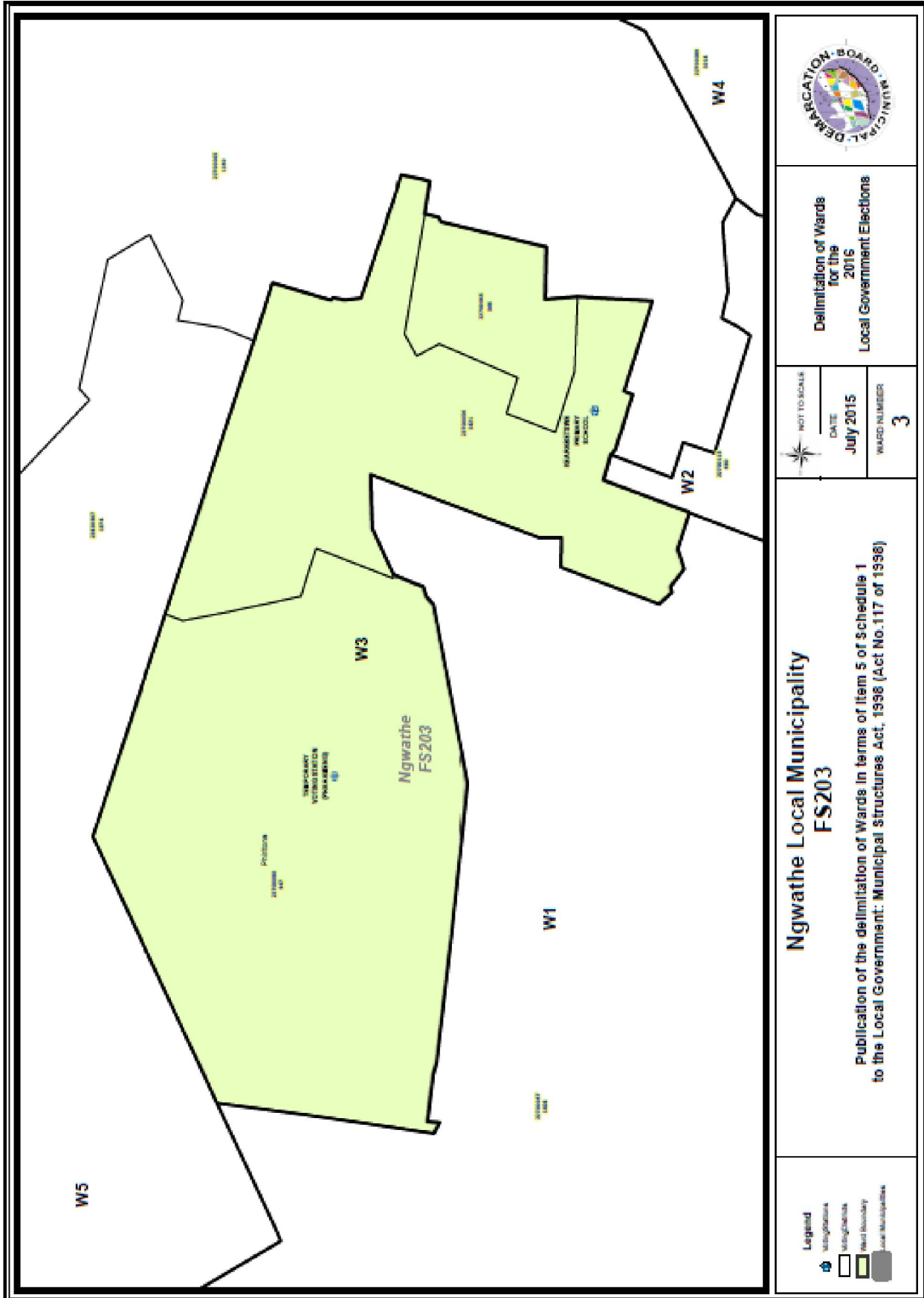






	
<b>Delimitation of Wards for the 2016 Local Government Elections</b>	
NOT TO SCALE DATE July 2015	WARD NUMBER <b>1</b>
<b>Ngwathe Local Municipality FS203</b> Publication of the delimitation of Wards in terms of item 5 of Schedule 1 to the Local Government: Municipal Structures Act, 1998 (Act No. 117 of 1998)	
<b>Legend</b> • Schools □ Mochaka □ Mafube □ Mpephane □ Local Municipalities	



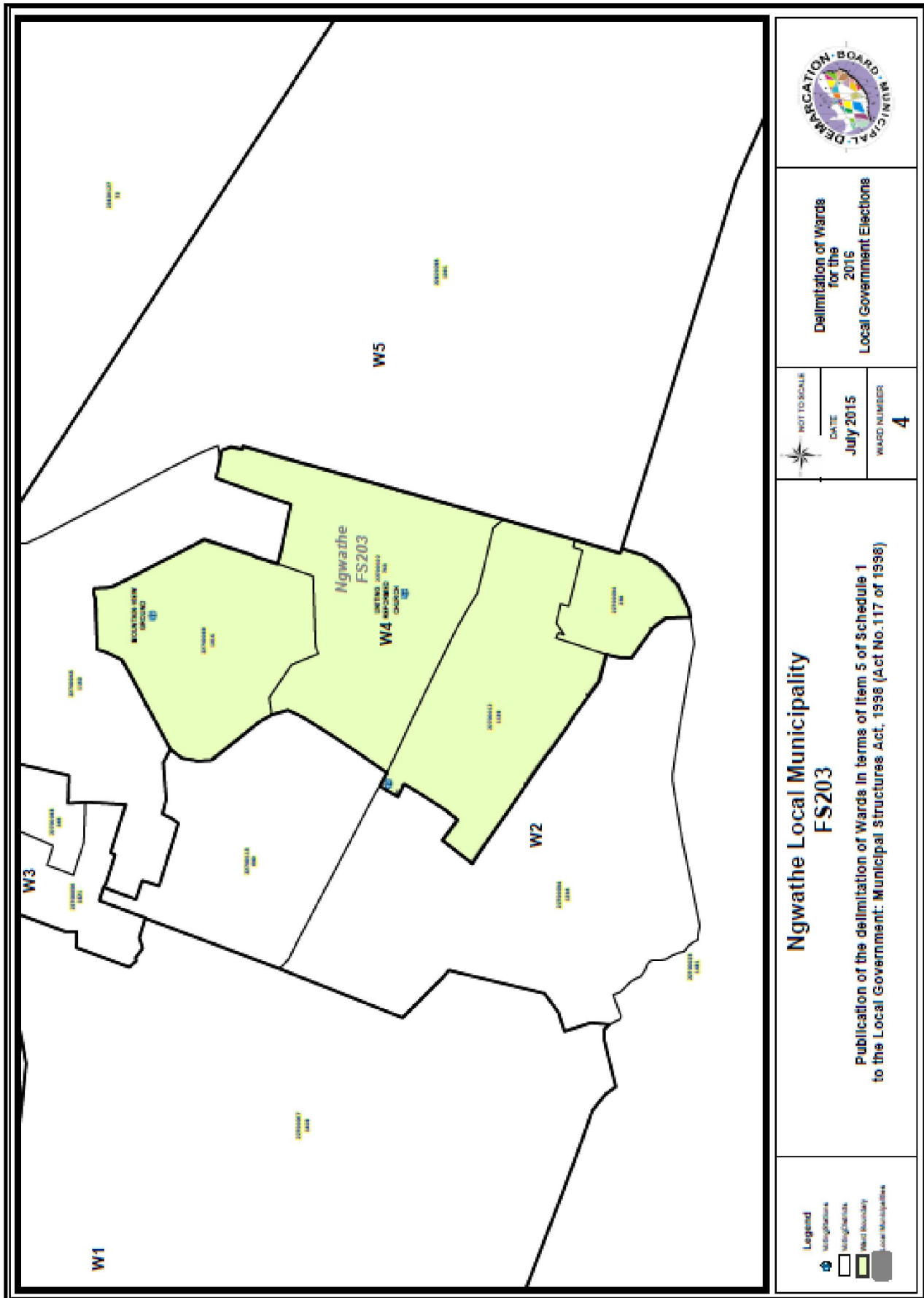


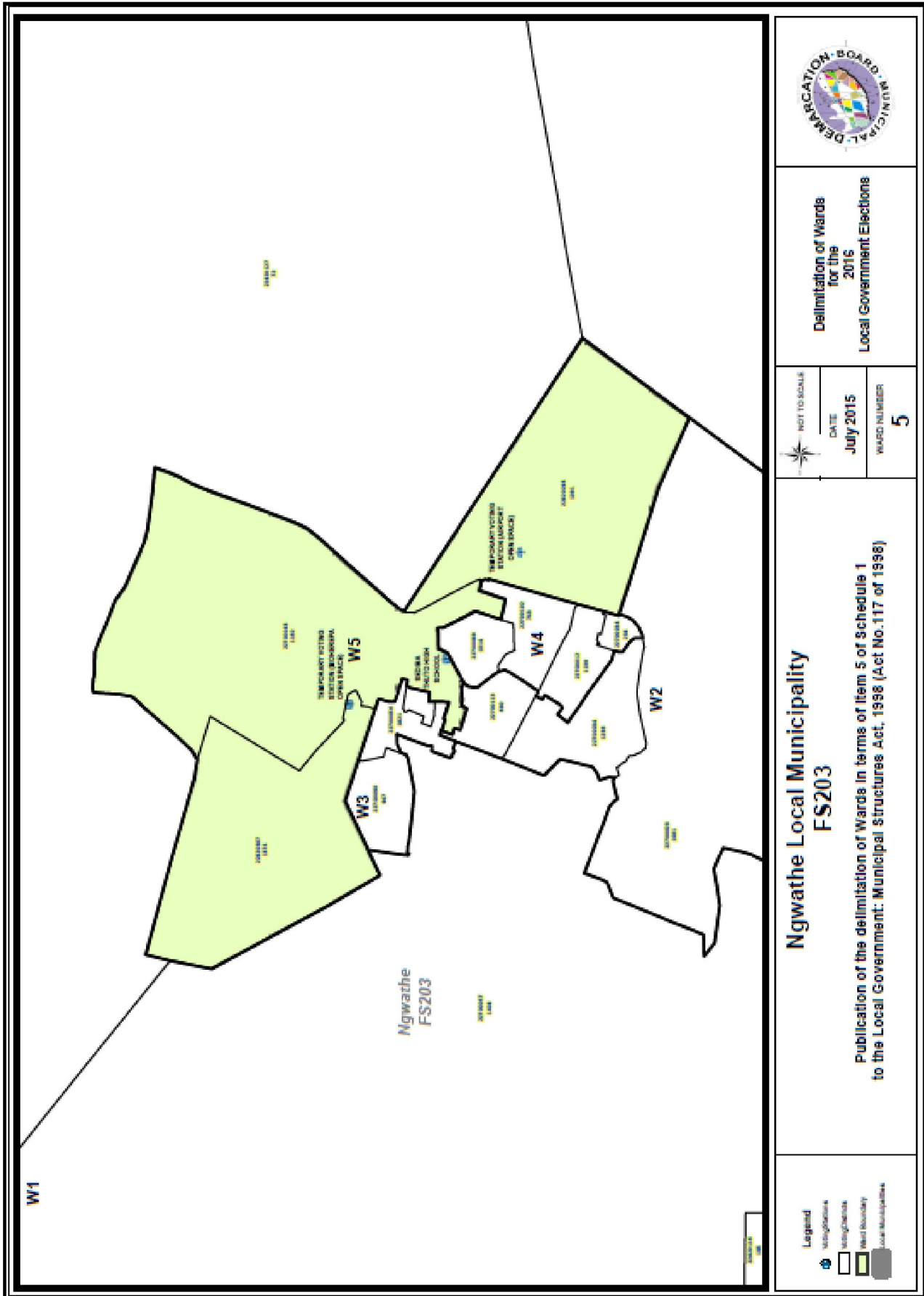
**Delimitation of Wards  
for the  
2015  
Local Government Elections**

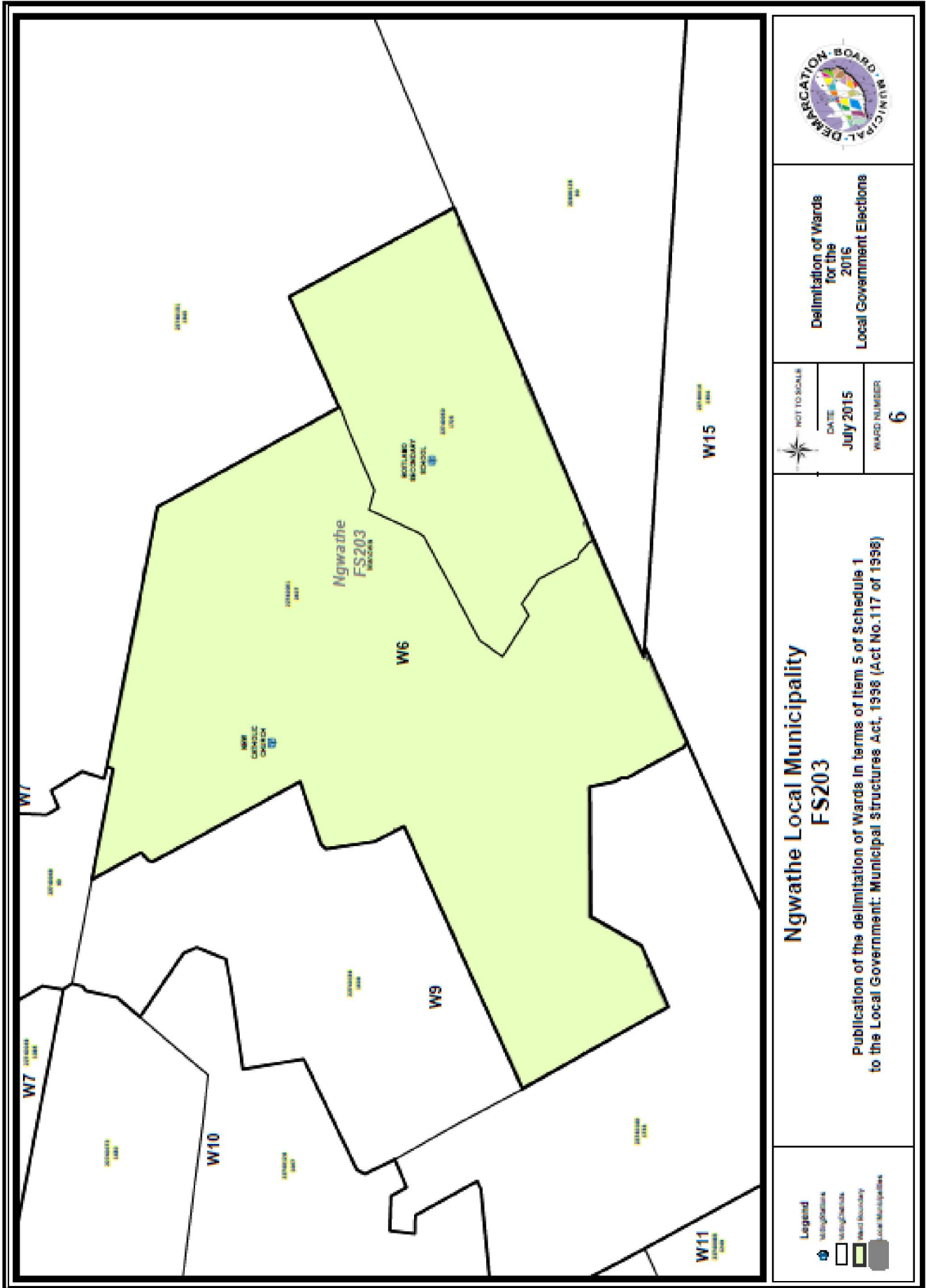
NOT TO SCALE  
DATE  
**July 2015**  
WARD NUMBER  
**3**

**Ngwathe Local Municipality  
FS203**  
Publication of the delimitation of Wards in terms of Item 5 of Schedule 1  
to the Local Government: Municipal Structures Act, 1998 (Act No. 117 of 1998)

- Legend**
- Municipality
  - Ward
  - Road
  - Ward Boundary
  - Local Municipality







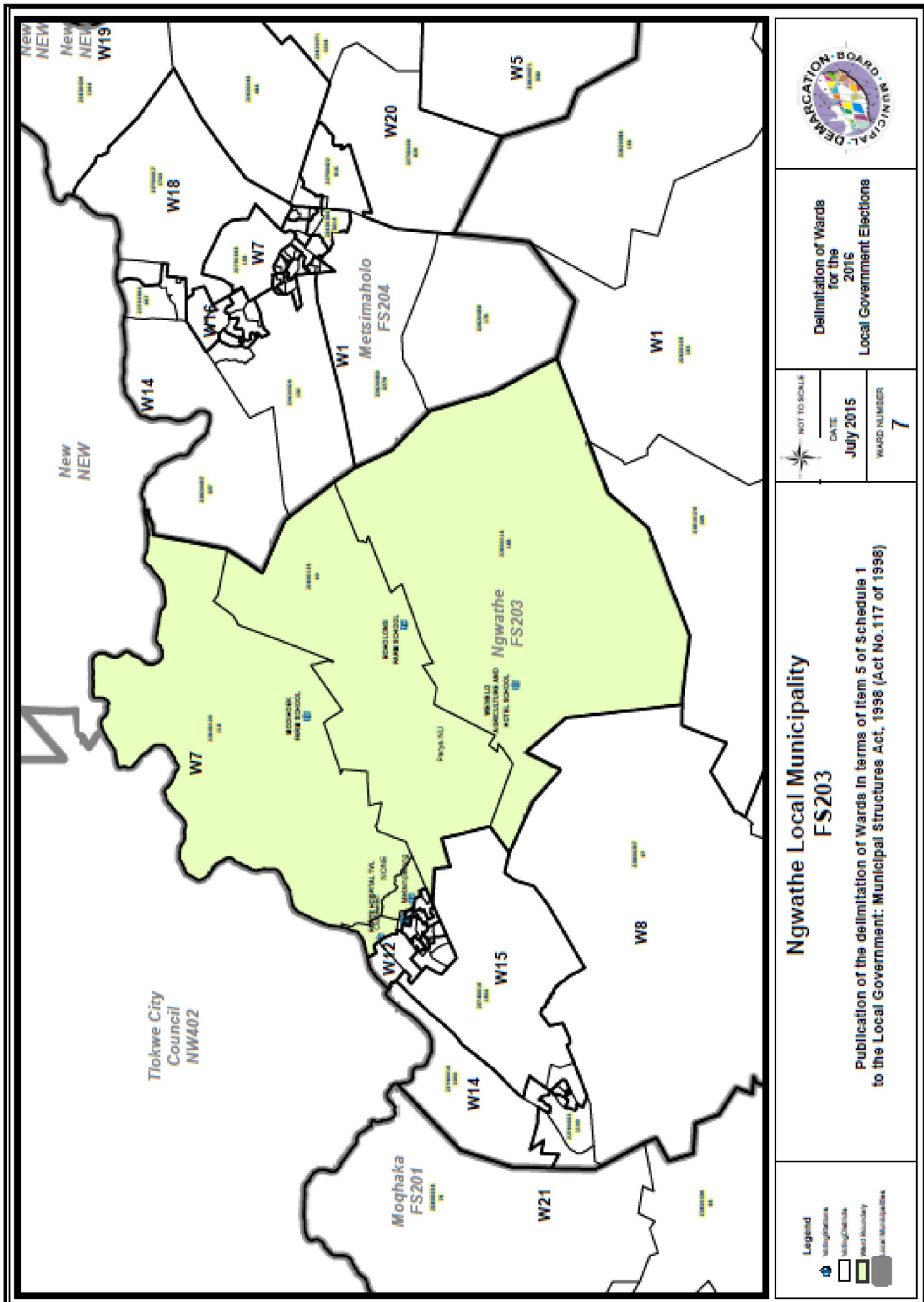
Delimitation of Wards  
for the  
2016  
Local Government Elections

NOT TO SCALE  
DATE: July 2015  
WARD NUMBER: 6

### Ngwathe Local Municipality FS203

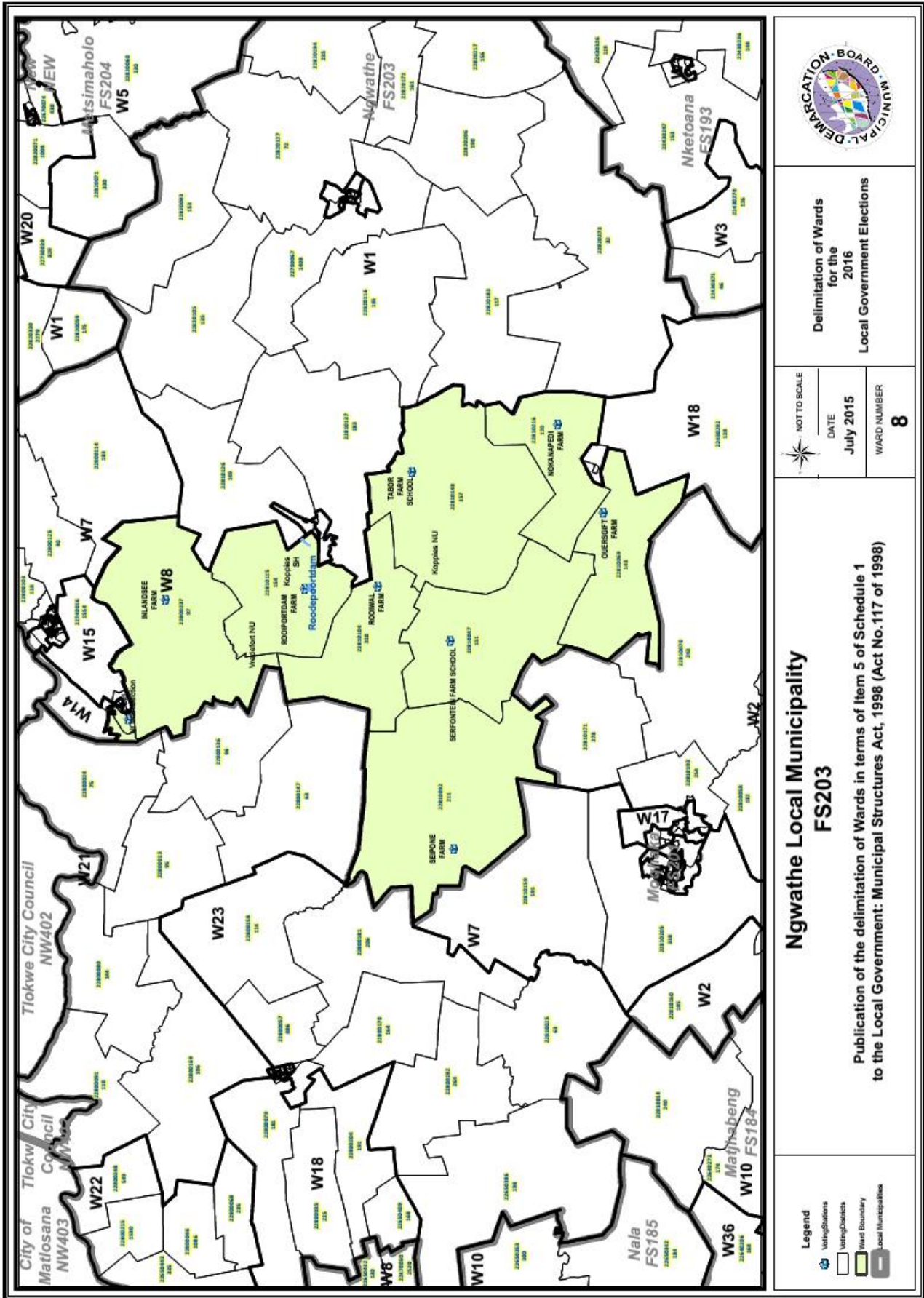
Publication of the delimitation of Wards in terms of item 5 of schedule 1  
to the Local Government: Municipal Structures Act, 1998 (Act No. 117 of 1998)

- Legend**
- Municipality
  - Ward
  - Ward Boundary
  - Local Municipality



Delimitation of Wards for the 2015 Local Government Elections





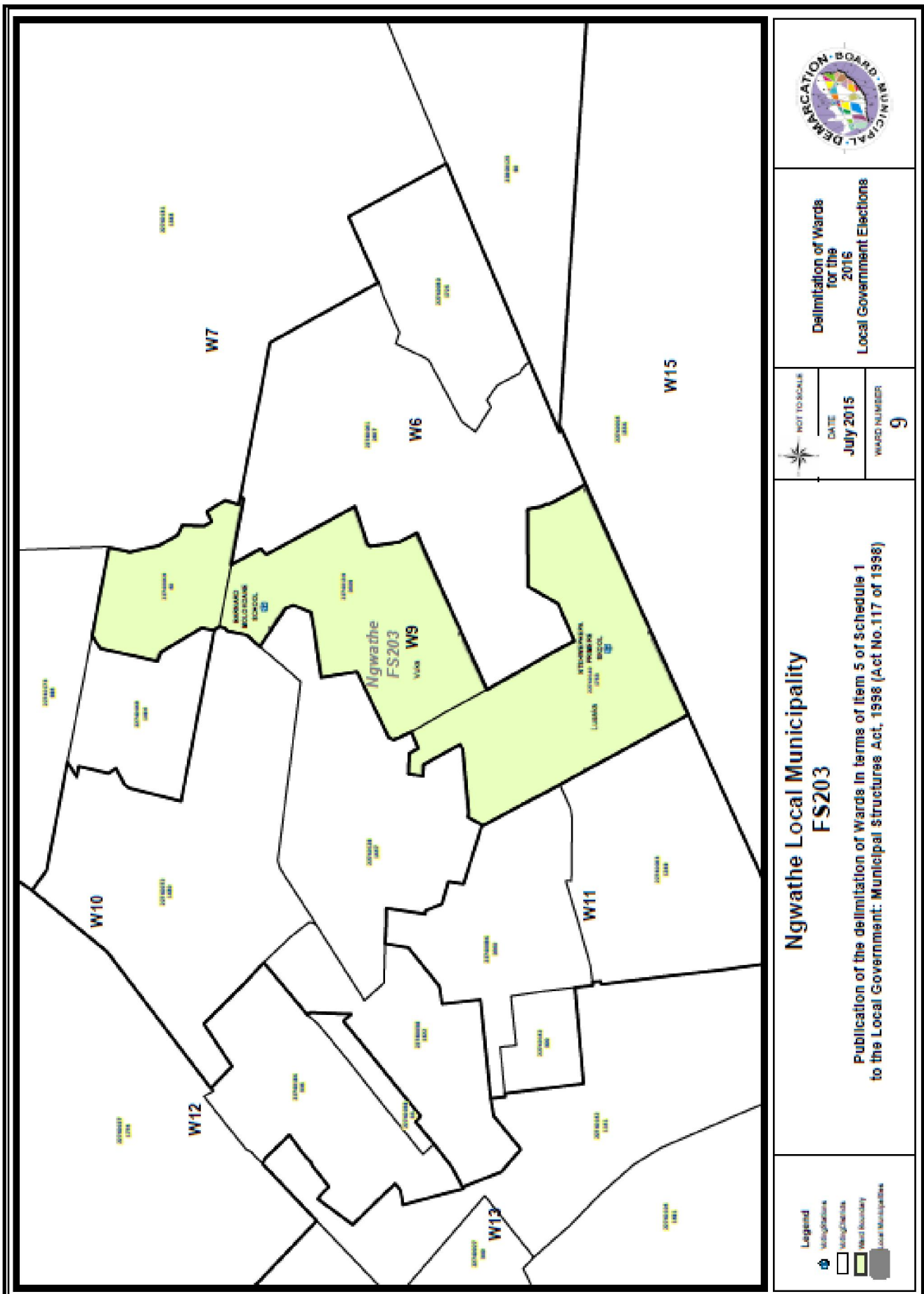
**Delimitation of Wards  
for the  
2016  
Local Government Elections**

NOT TO SCALE  
DATE  
**July 2015**  
WARD NUMBER  
**8**

**Ngwathe Local Municipality  
FS203**

Publication of the delimitation of Wards in terms of Item 5 of Schedule 1  
to the Local Government: Municipal Structures Act, 1998 (Act No.117 of 1998)

- Legend**
- Voting Stations
  - Voting Districts
  - Ward Boundary
  - Local Municipality

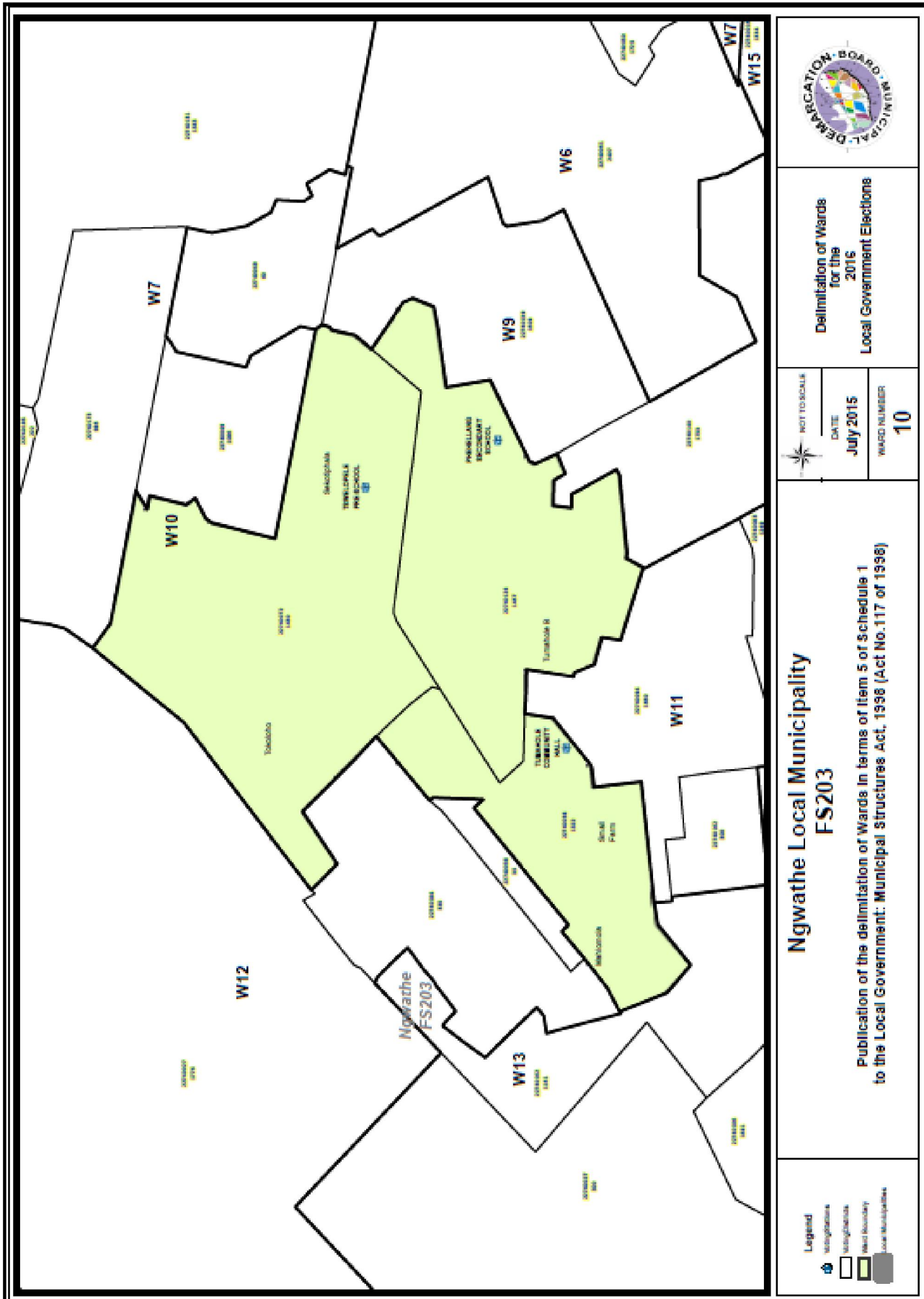


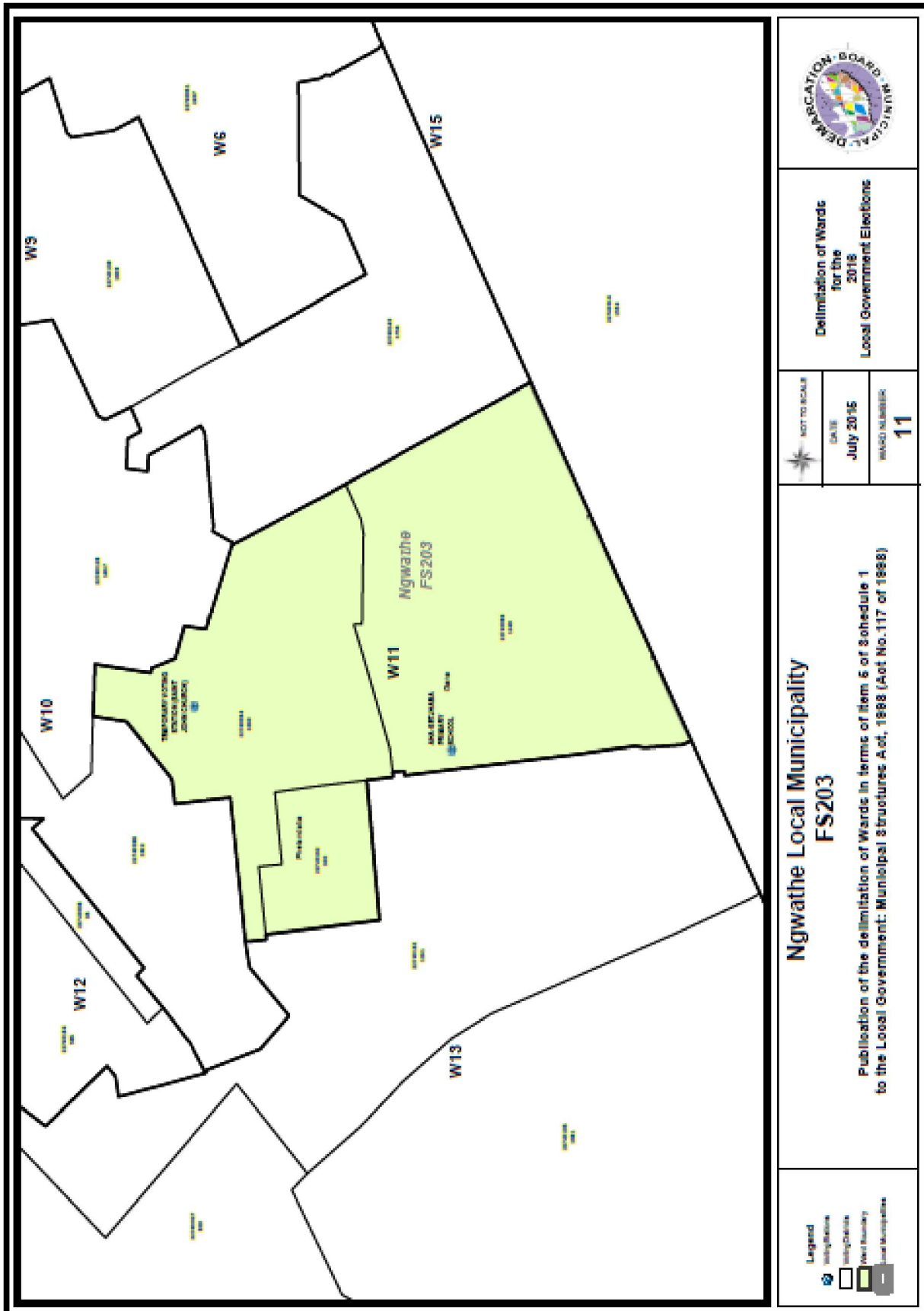
Delimitation of Wards for the 2015 Local Government Elections

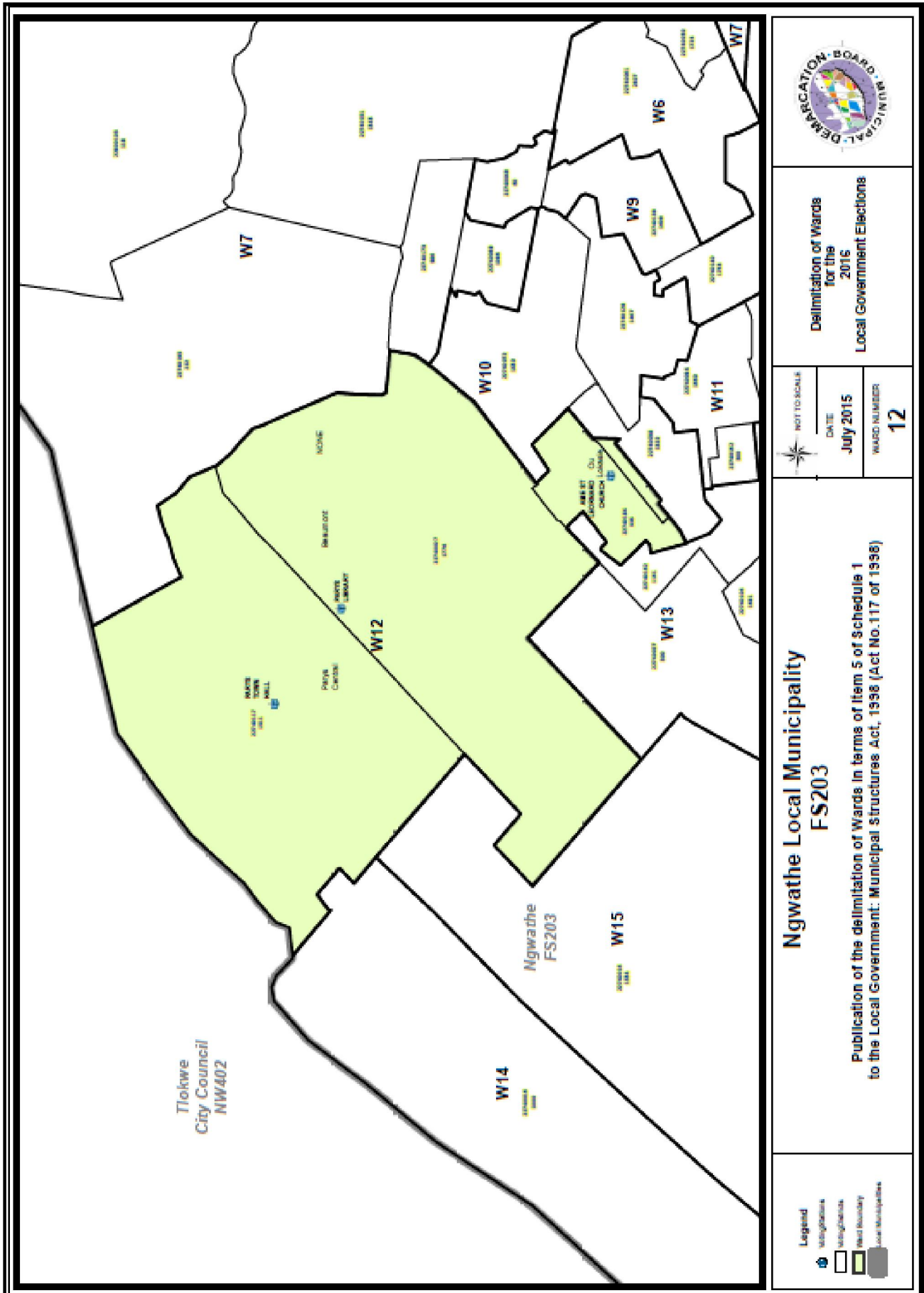
NOT TO SCALE  
DATE: July 2015  
WARD NUMBER: 9

**Ngwathe Local Municipality FS203**  
Publication of the delimitation of Wards in terms of Item 5 of Schedule 1 to the Local Government: Municipal Structures Act, 1998 (Act No.117 of 1998)

**Legend**  
Municipalities  
Municipalities  
Ward Boundary  
Local Municipalities







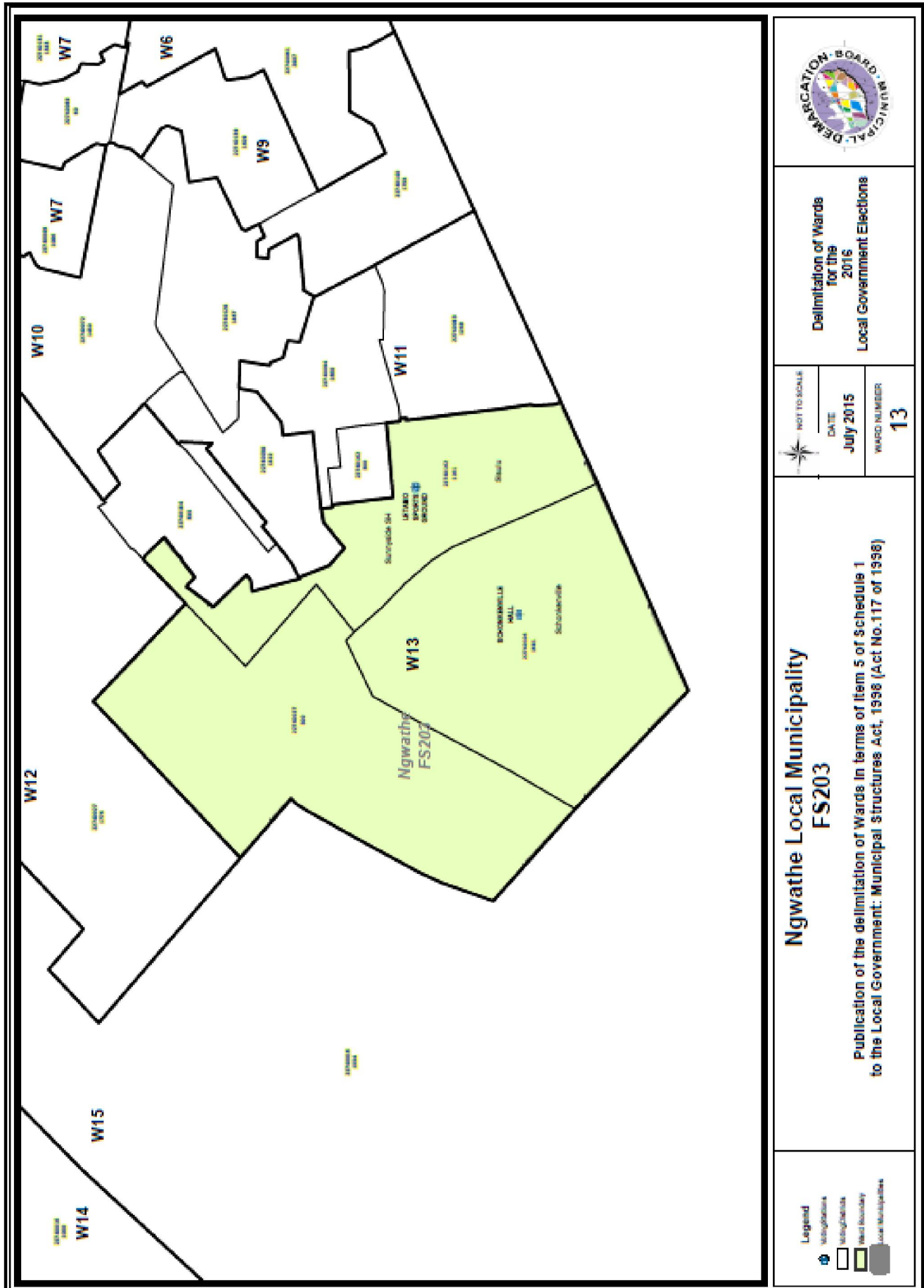
Delimitation of Wards  
for the  
2016  
Local Government Elections

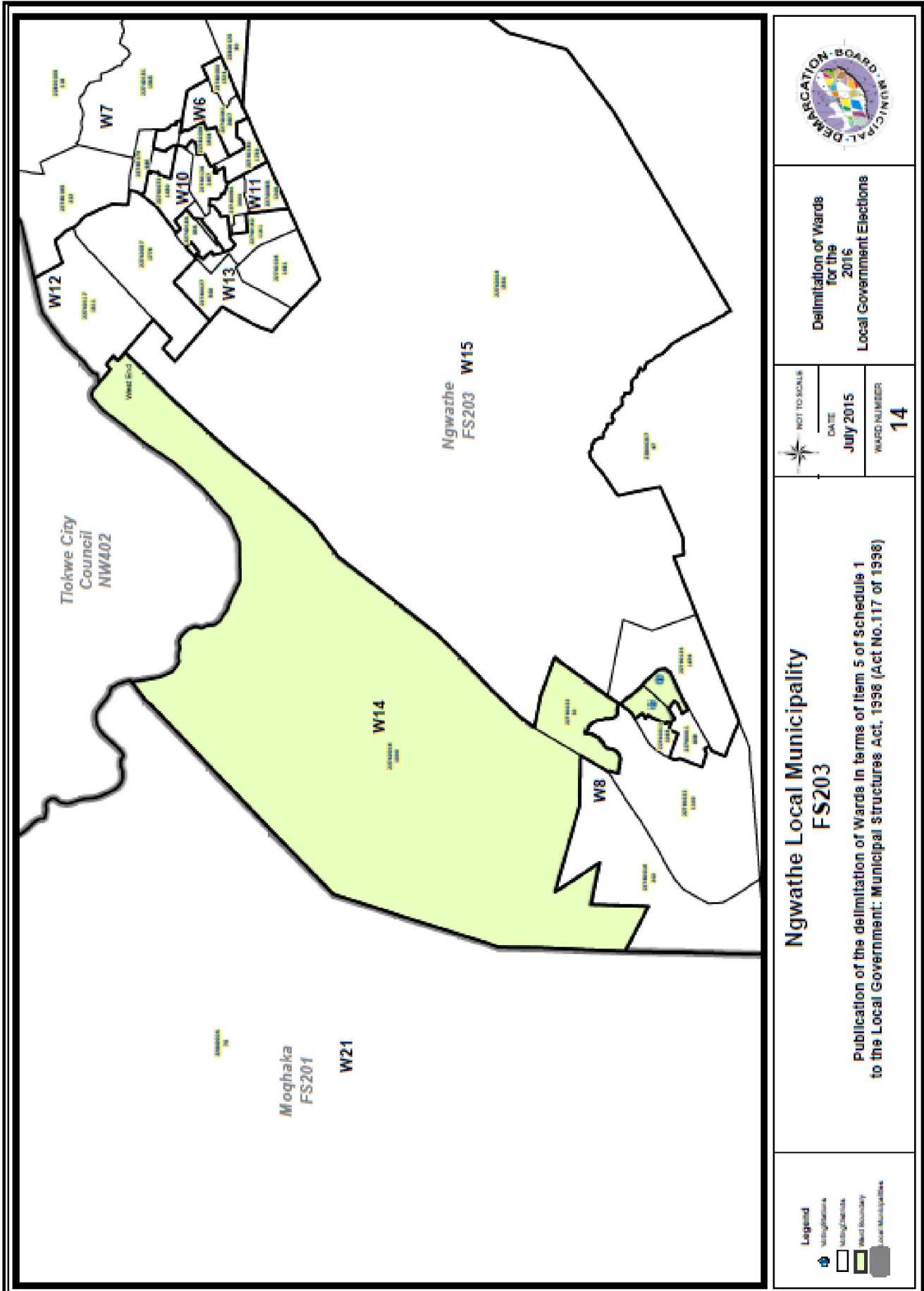
NOT TO SCALE
DATE July 2015
WARD NUMBER 12

**Ngwathe Local Municipality  
FS203**

Publication of the delimitation of Wards in terms of item 5 of Schedule 1  
to the Local Government: Municipal Structures Act, 1998 (Act No. 117 of 1998)

- Legend**
- Municipalities
  - Ward boundaries
  - Road boundaries
  - Local Municipalities





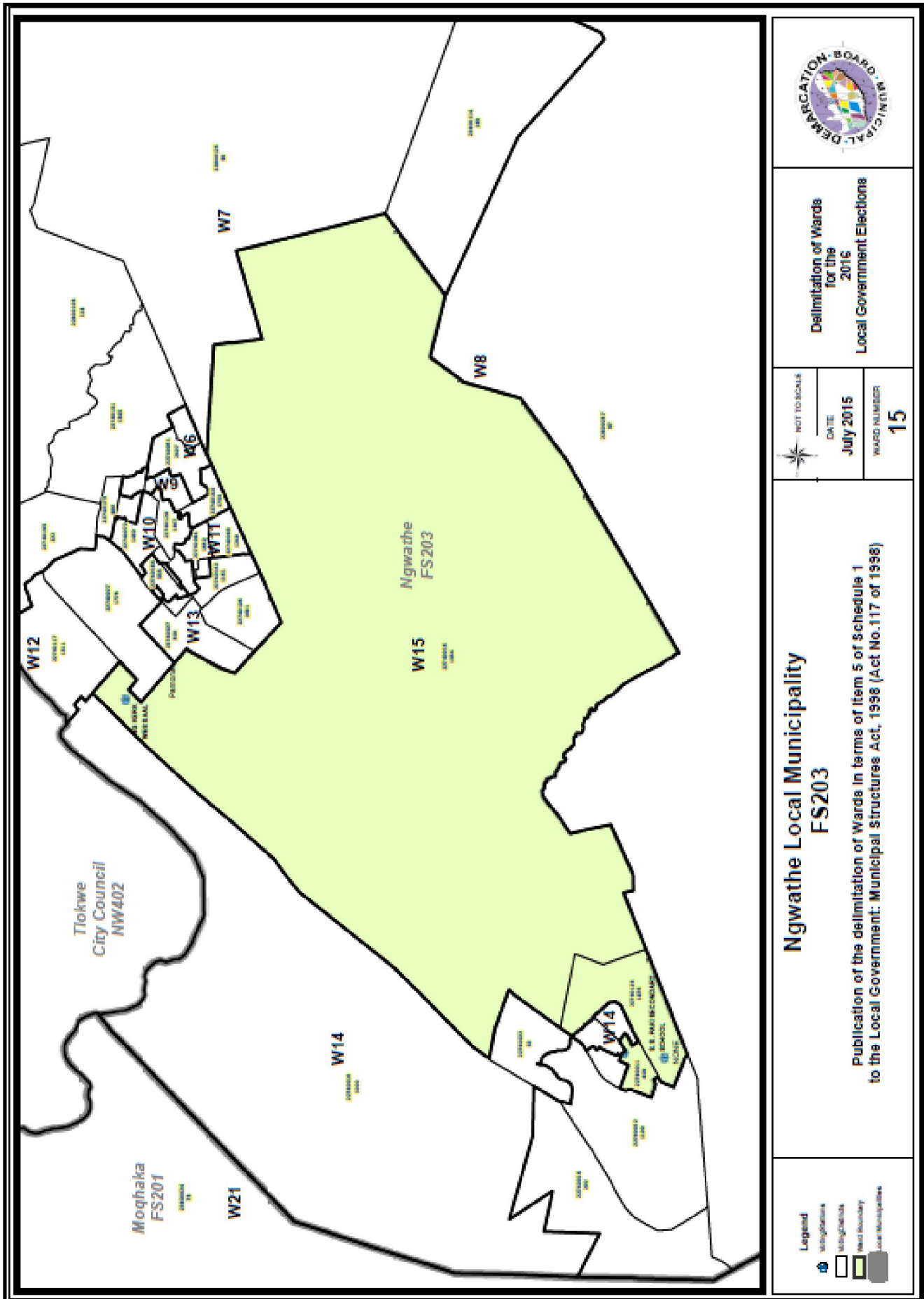
Delimitation of Wards  
for the  
2016  
Local Government Elections

NOT TO SCALE  
DATE  
July 2015  
WARD NUMBER  
**14**

**Ngwathe Local Municipality  
FS203**

Publication of the delimitation of Wards in terms of item 5 of Schedule 1  
to the Local Government: Municipal Structures Act, 1998 (Act No.117 of 1998)

- Legend**
- Ward boundary
  - Municipal boundary
  - Highlighted ward



Delimitation of Wards  
for the  
2016  
Local Government Elections



DATE  
July 2015

WARD NUMBER  
15

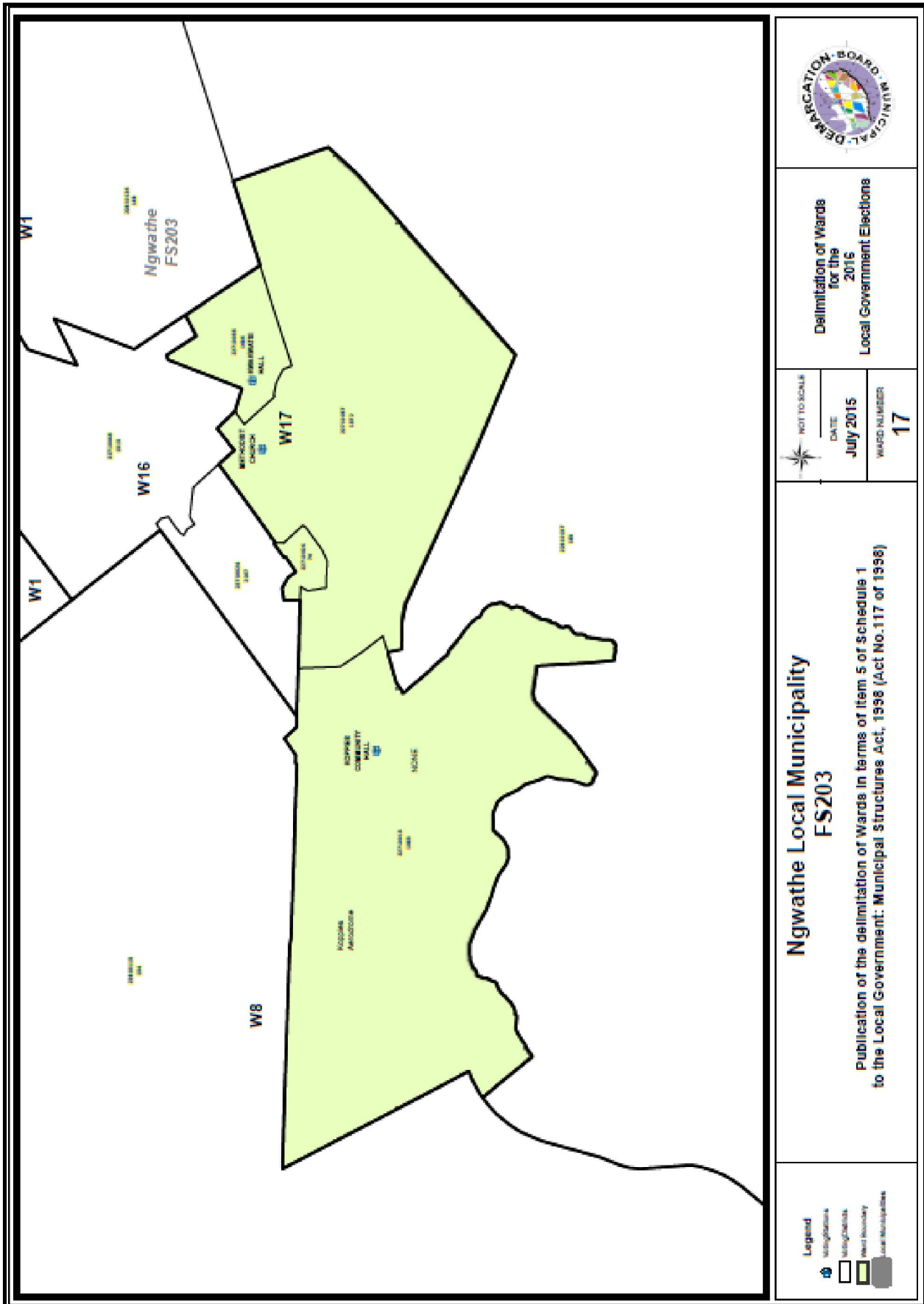
**Ngwathe Local Municipality  
FS203**

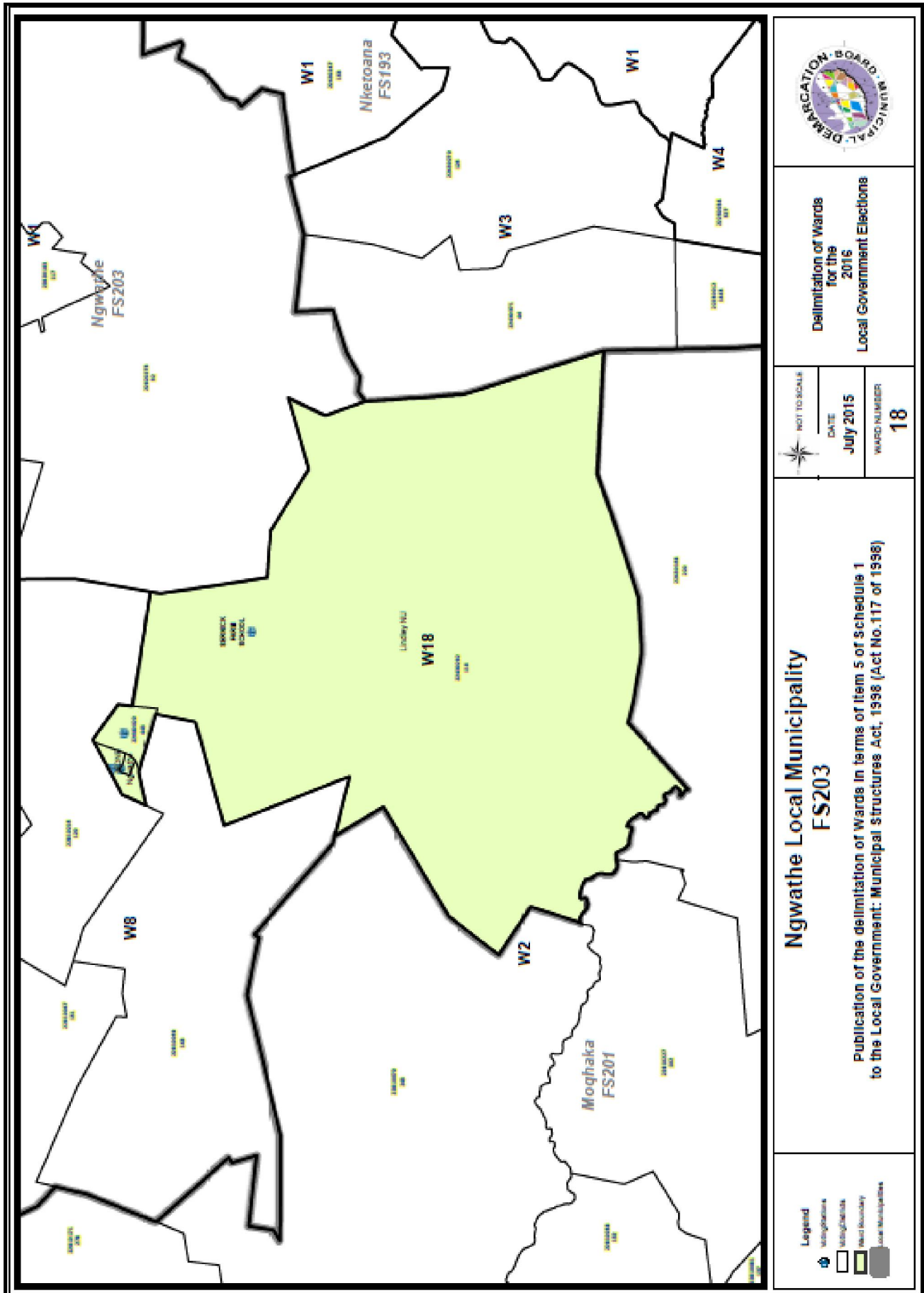
Publication of the delimitation of wards in terms of item 5 of Schedule 1  
to the Local Government: Municipal Structures Act, 1998 (Act No. 117 of 1998)

- Legend**
- Village
  - Ward
  - Ward Boundary
  - Local Municipality









**PROVINCIAL GAZETTE**  
(Published every Friday)

All correspondence, advertisements, etc. must be addressed to the Officer in charge of the Provincial Gazette, P.O. Box 517, Bloemfontein, Tel.: (051) 403 3139. Free Voucher copies of the Provincial Gazette or cuttings of advertisements are NOT supplied.

**Subscription Rates (payable in advance)**

The subscription fee for the Provincial Gazette (including all Extraordinary Provincial Gazettes) are as follows:

**SUBSCRIPTION: (POST)**

PRICE PER COPY	R 27.00
HALF-YEARLY	R 678.00
YEARLY	R 1 356.00

**SUBSCRIPTION: (OVER THE COUNTER / E-MAIL)**

PRICE PER COPY	R 19.00
HALF-YEARLY	R 470.00
YEARLY	R 940.00

Stamps are not accepted

**Closing time for acceptance of copy**

All advertisements must reach the Officer in Charge of the Provincial Gazette **not later than 16:00, three workings days** prior to the publication of the Gazette. Advertisements received after that time will be held over for publication in the issue of the following week, or if desired by the advertiser, will be inserted in the current issue as a "Late Advertisement". In such case the advertisement must be delivered to the Officer in Charge **not later than 08:00 on the Tuesday** preceding the publication of the Gazette and double rate will be charged for that advertisement.

A "Late Advertisement" will not be inserted as such without definite instructions from the advertiser.

**Advertisement Rates**

Notices required by Law to be inserted in the Provincial Gazette: **R29.50** per centimeter or portion thereof, single column.

Advertisement fees are payable in advance to the Officer in charge of the Provincial Gazette, P.O. Box 517, Bloemfontein, 9300, Tel.: (051) 403 3139.

**NUMBERING OF PROVINCIAL GAZETTE**

You are hereby informed that the numbering of the Provincial Gazette /Tender Bulletin and notice numbers will from 2010 coincide with the relevant financial year. In other words, the chronological numbering starting from one will commence on or after 1 April of every year.

Printed and published by the Free State Provincial Government

**PROVINSIALE KOERANT**  
(Verskyn elke Vrydag)

Alle korrespondensie, advertensies, ens. moet aan die Beampte Belas met die Provinsiale Koerant, Posbus 517, Bloemfontein, Tel.: No. (051) 403 3139 geadresseer word. Gratis eksemplare van die Provinsiale Koerant of uitknipsels van advertensies word NIE verskaf nie.

**Intekengeld (vooruitbetaalbaar)**

Die intekengeld vir die Provinsiale Koerant (insluitend alle Buitengewone Provinsiale Koerante) is soos volg:

**INTEKENGELD: (POS)**

PRYS PER EKSEMPLAAR	R 27.00
HALFJAARLIKS	R 678.00
JAARLIKS	R 1 356.00

**INTEKENGELD: (OOR DIE TOONBANK / E-POS)**

PRYS PER EKSEMPLAAR	R 19.00
HALFJAARLIKS	R 470.00
JAARLIKS	R 940.00

Seëls word nie aanvaar nie.

**Sluitingstyd vir die Aanneme van Kopie**

Alle advertensies moet die Beampte Belas met die Provinsiale Koerant bereik **nie later nie as 16:00 drie werksdae** voordat die Koerant uitgegee word. Advertensies wat na daardie tyd ontvang word, word oorgehou vir publikasie in die uitgawe van die volgende week, of as die adverteerder dit verlang, sal dit in die Koerant wat op die pers is as 'n "Laat Advertensie" geplaas word. In sulke gevalle moet die advertensie aan die Beampte oorhandig word **nie later nie as 08:00 op die Dinsdag** voordat die Koerant gepubliseer word en dubbeltarief sal vir dié advertensie gevra word.

'n "Laat Advertensie" sal nie sonder definitiewe instruksies van die Adverteerder as sodanige geplaas word nie.

**Advertensietariewe**

Kennisgewings wat volgens Wet in die Provinsiale Koerant geplaas moet word: **R29.50** per sentimeter of deel daarvan, enkel-kolom.

Advertensiegelde is vooruitbetaalbaar aan die Beampte belas met die Provinsiale Koerant, Posbus 517, Bloemfontein 9300, Tel.: (051) 403 3139.

**NOMMERING VAN PROVINSIALE KOERANT**

U word hiermee in kennis gestel dat die nommering van die Provinsiale Koerant / Tender Bulletin en kennisgewingnummers vanaf 2010 met die betrokke boekjaar sal ooreenstem. Met ander woorde, die kronologiese nommering beginnende met een, sal op of na 1 April van elke jaar begin.

Gedruk en uitgegee deur die Vrystaatse Provinsiale Regering