

# Provincial Gazette

Free State Province



# Provinsiale Koerant

Provinsie Vrystaat

Published by Authority

Uitgegee op Gesag

**SPECIAL**

NO. 62	MONDAY, 20 JULY 2015	NO. 62	MAANDAG, 20 JULIE 2015
<b>GENERAL NOTICE</b>		<b>ALGEMENE KENNISGEWING</b>	
<b>23</b> Municipal Demarcation Board: Delimitation of Municipal Wards in Terms of the Local Government: Municipal Structures Act, 1998		<b>23</b> Munisipale Afbakeningsraad: Afbakening Van Munisipale Wyke Ingevolge die Wet op Plaaslike Regering: Munisipale Strukture, 1998	
<b>Mafube Local Municipality</b>	<b>FS205.....2</b>	<b>Mafube Plaaslike Munisipaliteit</b>	<b>FS205 .....2</b>

GENERAL NOTICE / ALGEMENE KENNISGEWING

[NO.23 OF 2015]

<p style="text-align: center;"><b>MUNICIPAL DEMARCATION BOARD: DELIMITATION OF MUNICIPAL WARDS IN TERMS OF THE LOCAL GOVERNMENT: MUNICIPAL STRUCTURES ACT, 1998</b></p> <p style="text-align: center;"><b>Mafube Local Municipality FS205</b></p> <p>In terms of Item 5 (1) of Schedule 1 to the Local Government: Municipal Structures Act, 1998 (Act No. 117 of 1998) (the Act) the Municipal Demarcation Board hereby publishes its delimitation of wards for the above- mentioned municipality. Particulars of the delimitation are listed in the Schedule.</p> <p>In terms of Item 5 (2) of Schedule 1 to the Act, any person aggrieved by the delimitation may, within 14 days of publication of this notice, submit objections in writing to:</p> <p>The Municipal Demarcation Board Private Bag X123 Centurion 0046</p> <p>Fax: 086 5248643 Email: wards@demarcation.org.za</p> <p>The attached form MDB 5 must please be used to object. The form is also available on <a href="http://www.demarcation.org.za">www.demarcation.org.za</a></p> <p><b>MS JANE THUPANA CHAIRPERSON: MUNICIPAL DEMARCATION BOARD</b></p>	<p style="text-align: center;"><b>MUNISIPALE AFBAKENINGSRAAD: AFBAKENING VAN MUNISIPALE WYKE INGEVOLGE DIE WET OP PLAASLIKE REGERING: MUNISIPALE STRUKTURE, 1998</b></p> <p style="text-align: center;"><b>Mafube Plaaslike Munisipaliteit FS205</b></p> <p>Ingevolge Item 5(1) van Bylae 1 van die Wet op Plaaslike Regering: Munisipale Strukture, 1998 (Wet No. 117 van 1998) (die Wet) publiseer die Munisipale Afbakeningsraad hiermee sy afbakening van wyke vir die bogenaaamde munisipaliteit. Besonderhede van die afbakening is vervat in die Bylae.</p> <p>Ingevolge item 5(2) van Bylae 1 van die Wet, kan enige persoon wat gegrief is deur 'n afbakening binne 14 dae vanaf publikasie van hierdie kennisgewing skriftelike besware voorlê aan:</p> <p>Die Munisipale Afbakeningsraad Privaatsak X123 Centurion 0046</p> <p>Faks: 086 5248643 E-pos: wards@demarcation.org.za</p> <p>Die aangehegte vorm MDB5 moet asseblief gebruik word om beswaar aan te teken. Die vorm is ook beskikbaar op <a href="http://www.demarcation.org.za">www.demarcation.org.za</a></p> <p><b>MS JANE THUPANA VOORSITTER: MUNISIPALE AFBAKENINGSRAAD</b></p>
<p style="text-align: center;"><b>SCHEDULE</b></p> <p>In terms of section 18(3) of the Local Government: Municipal Structures Act, 1998 (Act 117 of 1998), the MEC responsible for local government has determined that the municipal council consists of <b>17</b> councillors.</p> <p>After having consulted the Independent Electoral Commission, The Municipal Demarcation Board has delimited the municipality into <b>9</b> wards in terms of Schedule 1 of the Act.</p> <p>The number of registered voters in each ward does not vary by more than fifteen percent from the norm. The norm was determined by dividing the total number of voters on the municipal segment of the national common voters roll, namely <b>30190</b> voters on 5 March 2014, by the number of wards in the municipality.</p> <p>An overview map of the boundary of the municipality, with the boundaries of the wards within the municipality, and a map of each ward are attached. In case of a discrepancy between the map and this schedule, the map will prevail.</p> <p>The ward numbers, the voting districts and voting stations in each ward, and the number of voters are as follows:</p>	<p style="text-align: center;"><b>BYLAE</b></p> <p>Ingevolge artikel 18(3) van die Wet op Plaaslike Regering: Munisipale Strukture, 1998 (Wet 117 van 1998) het die LUR vir plaaslike regering bepaal dat die munisipale raad bestaan uit <b>17</b> raadslede.</p> <p>Na oorlegpleging met die Onafhanklike Verkiesingskommissie het die Munisipale Afbakeningsraad die munisipaliteit in <b>9</b> wyke afgebaken ingevolge Bylae 1 van die Wet.</p> <p>Die getal geregistreerde kiesers in elke wyk, wyk nie meer as vyftien persent van die norm af nie. Die norm is bepaal deur die getal geregistreerde kiesers op die munisipale segment van die nasionale gemeenskaplike kieserslys, naamlik <b>30190</b> kiesers op 5 Maart 2014, deur die getal wyke in die munisipaliteit te deel.</p> <p>'n Oorsigkaart van die munisipale grens met die grense van die wyke binne die munisipale grens, en 'n kaart van elke wyk, is aangeheg. Ingeval van 'n verskil tussen 'n kaart en hierdie bylae, sal die kaart geld.</p> <p>Die wyknommers, die stemdistrikte en stemlokale in elke wyk, en die getal kiesers is as volg:</p>

<b>Ward 1</b>	<b>comprises of a total of</b>	<b>3031</b>	<b>registered voters</b>	
<b>Wyk 1</b>	<b>bestaan uit 'n totaal van</b>	<b>3031</b>	<b>geregistreeerde kiesers</b>	
<b>MIN VOTERS/KIESERS:</b>	<b>2852</b>		<b>NORM: 3355</b>	<b>MAX VOTERS/KIESERS 3858</b>

<b>VOTING DISTRICT No.</b>	<b>VOTING STATION NAME</b>	<b>NUMBER OF VOTERS</b>	<b>SPLIT VD</b>
<b>STEMDISTRIK No</b>	<b>STEMLOKAAL NAAM</b>	<b>GETAL KIESERS</b>	<b>VERDEELDE SD</b>
22820082	BETHANIE FARM	69	
22820262	BLOUKRAANS TENT	85	Yes/Ja
22820150	MAHEM	69	
22430359	GRENFELL FARM	50	
22430180	ARUNDEL	103	
22180025	NTSWANATSATSI COMMUNITY HALL	1444	
22180014	CORNELIA TOWN HALL	1119	
22820318	RIVER RANCH	92	

<b>Ward 2</b>	<b>comprises of a total of</b>	<b>3780</b>	<b>registered voters</b>	
<b>Wyk 2</b>	<b>bestaan uit 'n totaal van</b>	<b>3780</b>	<b>geregistreeerde kiesers</b>	
<b>MIN VOTERS/KIESERS:</b>	<b>2852</b>		<b>NORM: 3355</b>	<b>MAX VOTERS/KIESERS 3858</b>

<b>VOTING DISTRICT No.</b>	<b>VOTING STATION NAME</b>	<b>NUMBER OF VOTERS</b>	<b>SPLIT VD</b>
<b>STEMDISTRIK No</b>	<b>STEMLOKAAL NAAM</b>	<b>GETAL KIESERS</b>	<b>VERDEELDE SD</b>
22690065	MFUNDU THUTO SCHOOL	2398	
22690087	DCC CHURCH	742	
22690098	APOSTOLIC CHRISTIAN BROTHER CHURCH	640	Yes/Ja

<b>Ward 3</b>	<b>comprises of a total of</b>	<b>2879</b>	<b>registered voters</b>	
<b>Wyk 3</b>	<b>bestaan uit 'n totaal van</b>	<b>2879</b>	<b>geregistreeerde kiesers</b>	
<b>MIN VOTERS/KIESERS:</b>	<b>2852</b>		<b>NORM: 3355</b>	<b>MAX VOTERS/KIESERS 3858</b>

<b>VOTING DISTRICT No.</b>	<b>VOTING STATION NAME</b>	<b>NUMBER OF VOTERS</b>	<b>SPLIT VD</b>
<b>STEMDISTRIK No</b>	<b>STEMLOKAAL NAAM</b>	<b>GETAL KIESERS</b>	<b>VERDEELDE SD</b>
22780032	QALABOTJHA COMMUNITY HALL	130	Yes/Ja
22780021	MOHLAKENG PRIMARY SCHOOL	1878	
22780054	RETSHIDISITSWE SECONDARY SCHOOL	871	

<b>Ward 4</b>	<b>comprises of a total of</b>	<b>3199</b>	<b>registered voters</b>	
<b>Wyk 4</b>	<b>bestaan uit 'n totaal van</b>	<b>3199</b>	<b>geregistreeerde kiesers</b>	
<b>MIN VOTERS/KIESERS:</b>	<b>2852</b>		<b>NORM: 3355</b>	<b>MAX VOTERS/KIESERS 3858</b>

<b>VOTING DISTRICT No.</b>	<b>VOTING STATION NAME</b>	<b>NUMBER OF VOTERS</b>	<b>SPLIT VD</b>
<b>STEMDISTRIK No</b>	<b>STEMLOKAAL NAAM</b>	<b>GETAL KIESERS</b>	<b>VERDEELDE SD</b>
22820138	OPLOOP	211	
22780065	TEN APOSTOLIC CHURCH	530	Yes/Ja
22780043	VILLIERS TOWN HALL	731	
22780032	QALABOTJHA COMMUNITY HALL	1663	Yes/Ja
22820240	MOUNT ARARAT	64	

<b>Ward 5</b>	<b>comprises of a total of</b>	<b>3858</b>	<b>registered voters</b>	
---------------	--------------------------------	-------------	--------------------------	--

<b>Wyk 5</b>	<b>bestaan uit 'n totaal van</b>	<b>3858</b>	<b>geregistreeerde kiesers</b>	
<b>MIN VOTERS/KIESERS:</b>	2852		<b>NORM: 3355</b>	<b>MAX VOTERS/KIESERS</b> 3858
<b>VOTING DISTRICT No.</b>	<b>VOTING STATION NAME</b>		<b>NUMBER OF VOTERS</b>	<b>SPLIT VD</b>
<b>STEMDISTRIK No</b>	<b>STEMLOKAAL NAAM</b>		<b>GETAL KIESERS</b>	<b>VERDEELDE SD</b>
22690098	APOSTOLIC CHRISTIAN BROTHER CHURCH		145	Yes/Ja
22690010	FRANKFORT TOWN HALL		1676	
22690021	MEDUWANENG SCHOOL		1067	
22690076	SAVE GOSPEL CHURCH		970	
<b>Ward 6</b>	<b>comprises of a total of</b>	<b>3065</b>	<b>registered voters</b>	
<b>Wyk 6</b>	<b>bestaan uit 'n totaal van</b>	<b>3065</b>	<b>geregistreeerde kiesers</b>	
<b>MIN VOTERS/KIESERS:</b>	2852		<b>NORM: 3355</b>	<b>MAX VOTERS/KIESERS</b> 3858
<b>VOTING DISTRICT No.</b>	<b>VOTING STATION NAME</b>		<b>NUMBER OF VOTERS</b>	<b>SPLIT VD</b>
<b>STEMDISTRIK No</b>	<b>STEMLOKAAL NAAM</b>		<b>GETAL KIESERS</b>	<b>VERDEELDE SD</b>
22690054	GUGULETHU SCHOOL		1721	
22690032	THUTO KE TSELA SCHOOL		1344	
<b>Ward 7</b>	<b>comprises of a total of</b>	<b>3858</b>	<b>registered voters</b>	
<b>Wyk 7</b>	<b>bestaan uit 'n totaal van</b>	<b>3858</b>	<b>geregistreeerde kiesers</b>	
<b>MIN VOTERS/KIESERS:</b>	2852		<b>NORM: 3355</b>	<b>MAX VOTERS/KIESERS</b> 3858
<b>VOTING DISTRICT No.</b>	<b>VOTING STATION NAME</b>		<b>NUMBER OF VOTERS</b>	<b>SPLIT VD</b>
<b>STEMDISTRIK No</b>	<b>STEMLOKAAL NAAM</b>		<b>GETAL KIESERS</b>	<b>VERDEELDE SD</b>
22820341	GLEN ALPHEN		25	
22820262	BLOUKRAANS TENT		4	
22820239	TEBELLO TSHEPO SCHOOL		106	
22690043	POELANO SCHOOL		3723	
<b>Ward 8</b>	<b>comprises of a total of</b>	<b>3668</b>	<b>registered voters</b>	
<b>Wyk 8</b>	<b>bestaan uit 'n totaal van</b>	<b>3668</b>	<b>geregistreeerde kiesers</b>	
<b>MIN VOTERS/KIESERS:</b>	2852		<b>NORM: 3355</b>	<b>MAX VOTERS/KIESERS</b> 3858
<b>VOTING DISTRICT No.</b>	<b>VOTING STATION NAME</b>		<b>NUMBER OF VOTERS</b>	<b>SPLIT VD</b>
<b>STEMDISTRIK No</b>	<b>STEMLOKAAL NAAM</b>		<b>GETAL KIESERS</b>	<b>VERDEELDE SD</b>
22760018	MAFAHLANENG COMMUNITY HALL		1890	
22760029	TWEELING LIBRARY		1581	
22820228	KROONTJIE SCHOOL		117	
22820251	MORSALA SCHOOL		80	
<b>Ward 9</b>	<b>comprises of a total of</b>	<b>2852</b>	<b>registered voters</b>	
<b>Wyk 9</b>	<b>bestaan uit 'n totaal van</b>	<b>2852</b>	<b>geregistreeerde kiesers</b>	
<b>MIN VOTERS/KIESERS:</b>	2852		<b>NORM: 3355</b>	<b>MAX VOTERS/KIESERS</b> 3858
<b>VOTING DISTRICT No.</b>	<b>VOTING STATION NAME</b>		<b>NUMBER OF VOTERS</b>	<b>SPLIT VD</b>
<b>STEMDISTRIK No</b>	<b>STEMLOKAAL NAAM</b>		<b>GETAL KIESERS</b>	<b>VERDEELDE SD</b>
22780010	NTATAISE EDUCARE		1937	
22780065	TEN APOSTOLIC CHURCH		915	Yes/Ja

PLEASE USE ADDITIONAL PAGE SHOULD THE ALTERNATIVE PROPOSALS BE MORE THAN THE FOLLOWING SPACE AVAILABLE

**FORM / VORM MDB5**

**WARD DELIMITATION / WYKSAFBAKENING**

**OBJECTION IN TERMS OF ITEM 5(2) OF SCHEDULE 1 TO THE LOCAL GOVERNMENT: MUNICIPAL STRUCTURES ACT, 1998**

**BESWAAR INGEVOLGE ITEM 5(2) VAN BYLAE 1 VAN DIE WET OP  
PLAASLIKE REGERING: MUNISIPALE STRUKTURE, 1998**

Name of municipality / Naam van Munisipaliteit:.....

Code / Kode: .....

Name of aggrieved person or institution / Naam van beswaarde person / instelling :

Contact person in case of an institution / Kontakpersoon in geval van 'n instelling :

Address / Adres :.....

Tel. number / Tel.nommer :..... Cell number / Selfoonnommer:.....

Email address / Epos adres :.....

I hereby object to the delimitation of the boundaries of the following wards:

WARD NUMBER / WYK NOMMER	REASON / MOTIVATION

I request the Municipal Demarcation Board to consider the following alternative proposals/ Ek versoek dat die volgende alternatiewe voorstel oorweeg word:

Ward number / Wyknommer	The ward should comprise of the following voting districts (Provide voting district number and the number of voters in brackets e.g. VD1123456(1500)+VD345678(2500)=4000  Die wyk moet bestaan uit die volgende stemdistrikte (voorsien stemdistriksnommers en die aantal geregistreerde kiesers, byvoorbeeld: VD1123456(1500)+VD345678(2500)=4000	Motivation / Motiveering

-----

I confirm that / Ek bevestig dat:

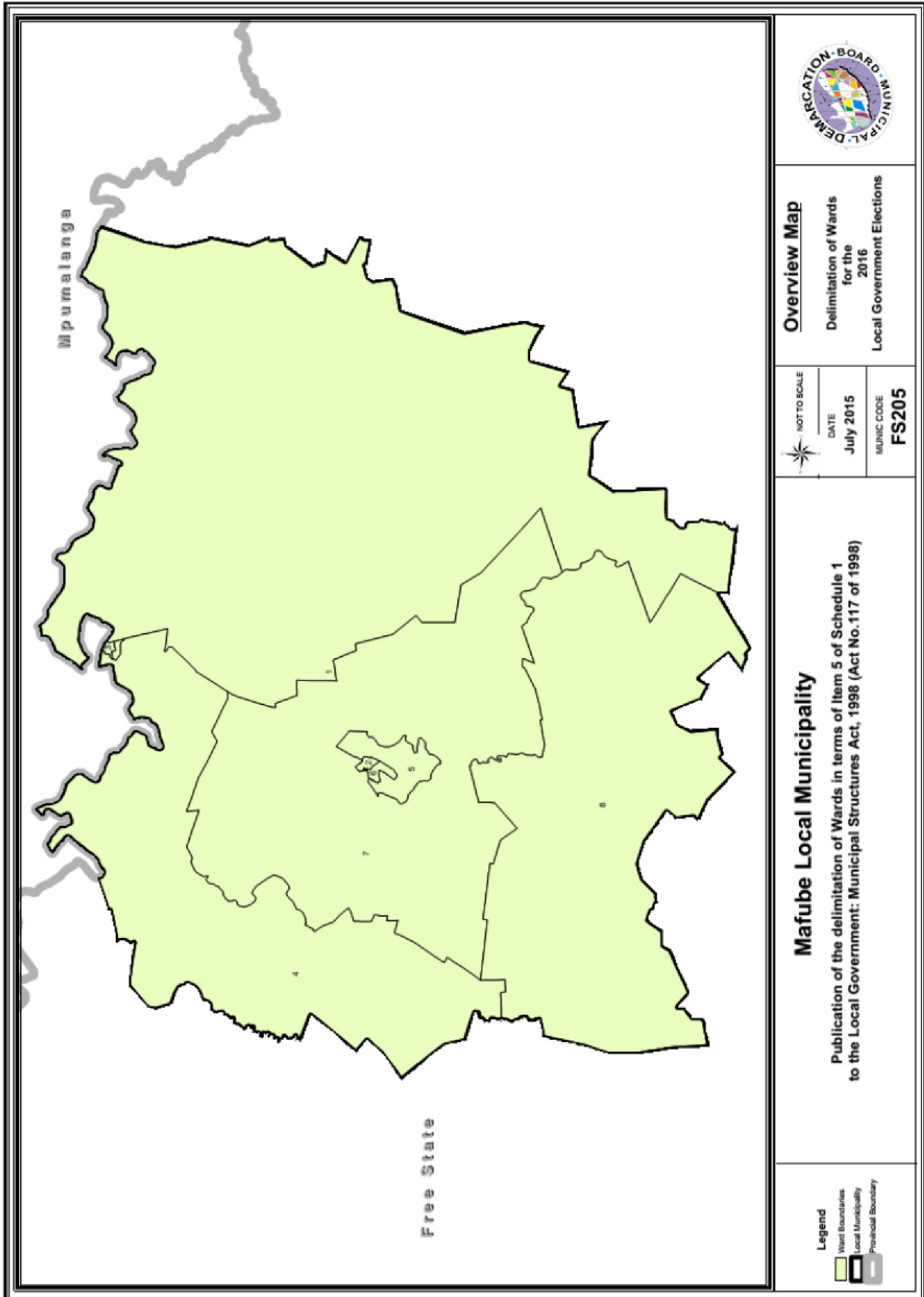
- each cluster of voting districts form a contiguous ward / die saamgevoegde stemdistrikte vorm 'n aaneenlopende wyk;
- the number of voters in each ward fall within the minimum and maximum of voters allowed per ward / die getal kiesers in elke wyk is binne die minimum en maksimum getal wat per wyk toegelaat word;
- the proposed ward boundaries comply, in general, with the criteria / die voorgestelde wyk voldoen in die algemeen aan die kriteria.

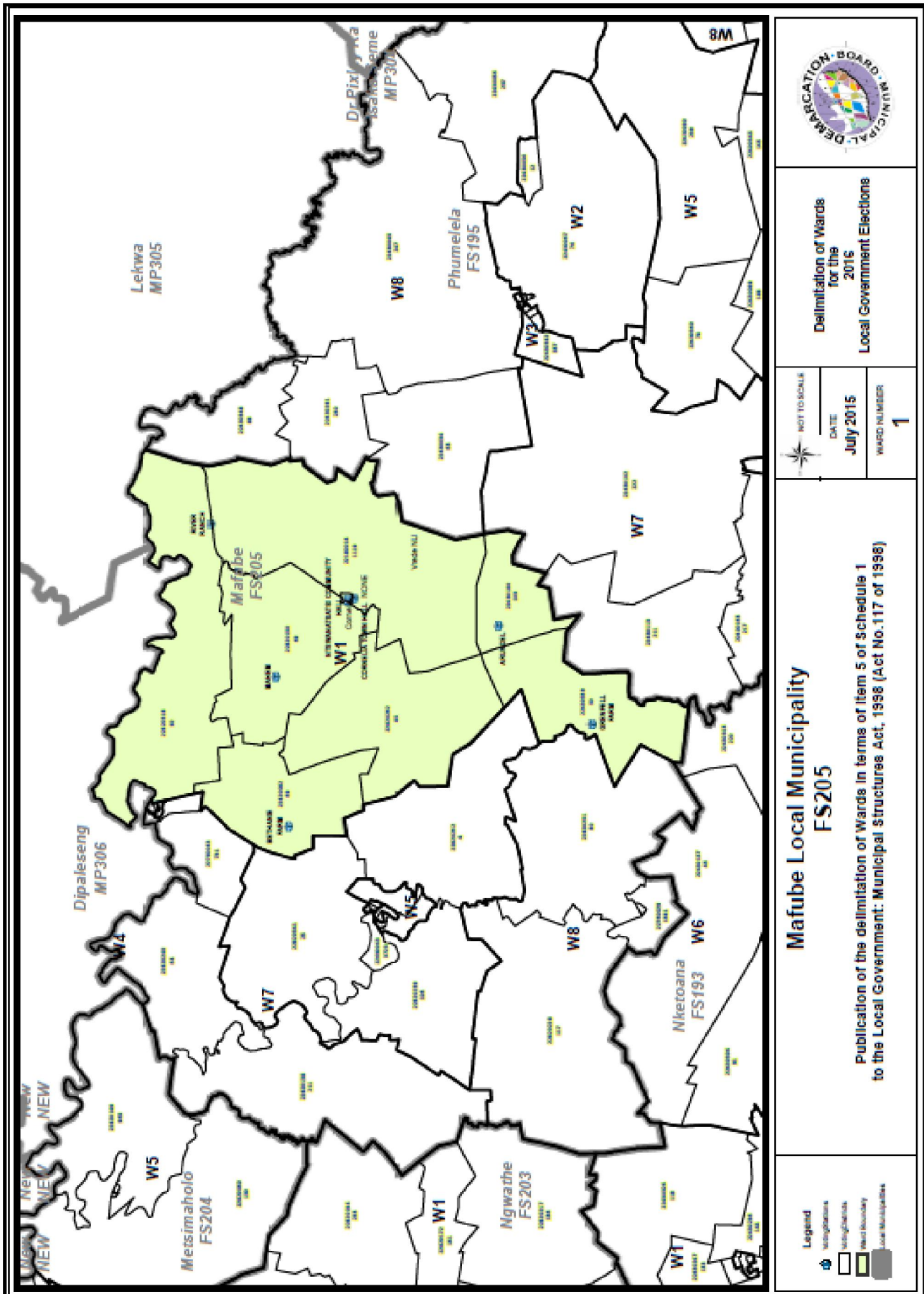
\_\_\_\_\_  
SIGNATURE

\_\_\_\_\_  
NAME AND SURNAME

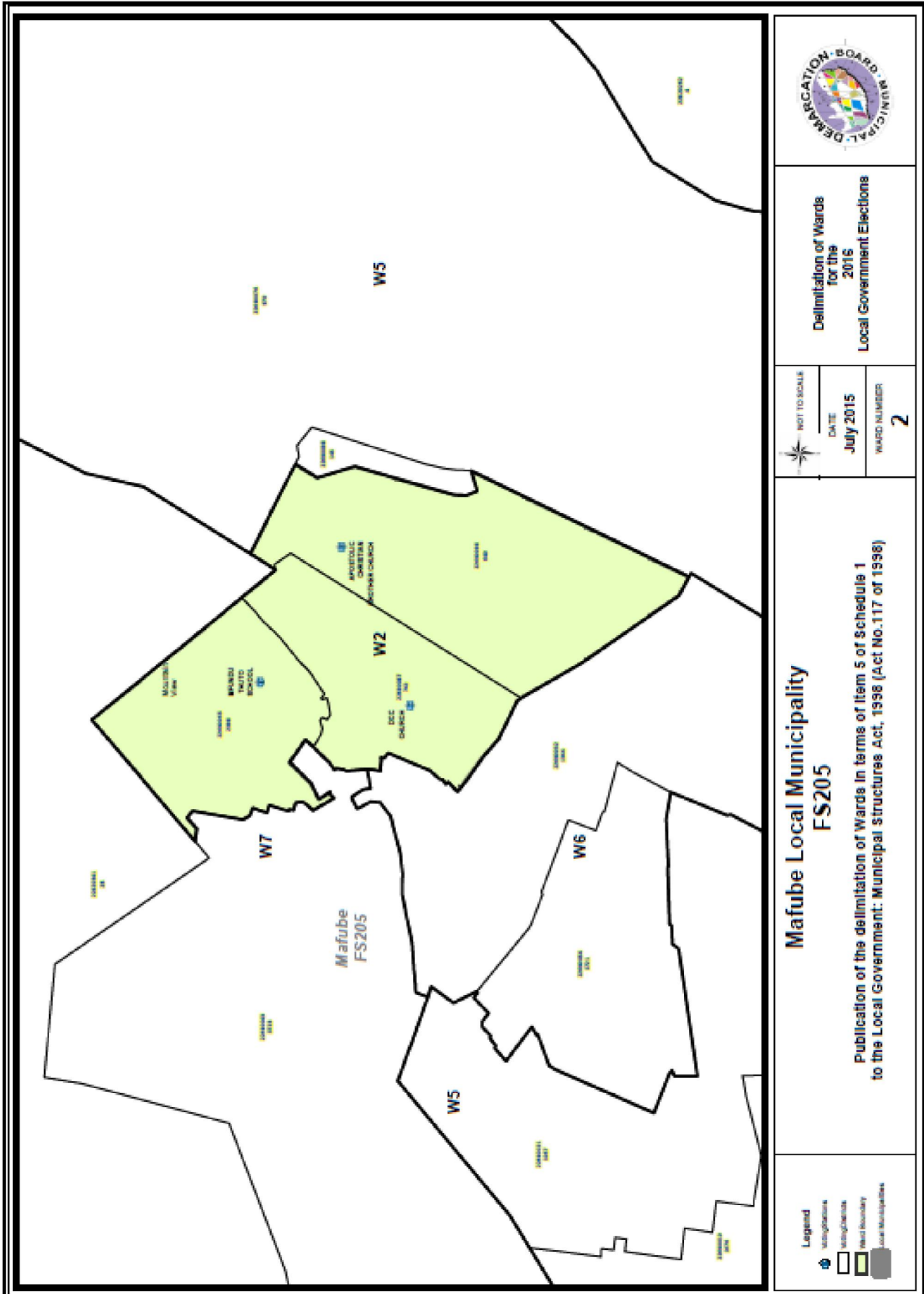
\_\_\_\_\_  
DATE

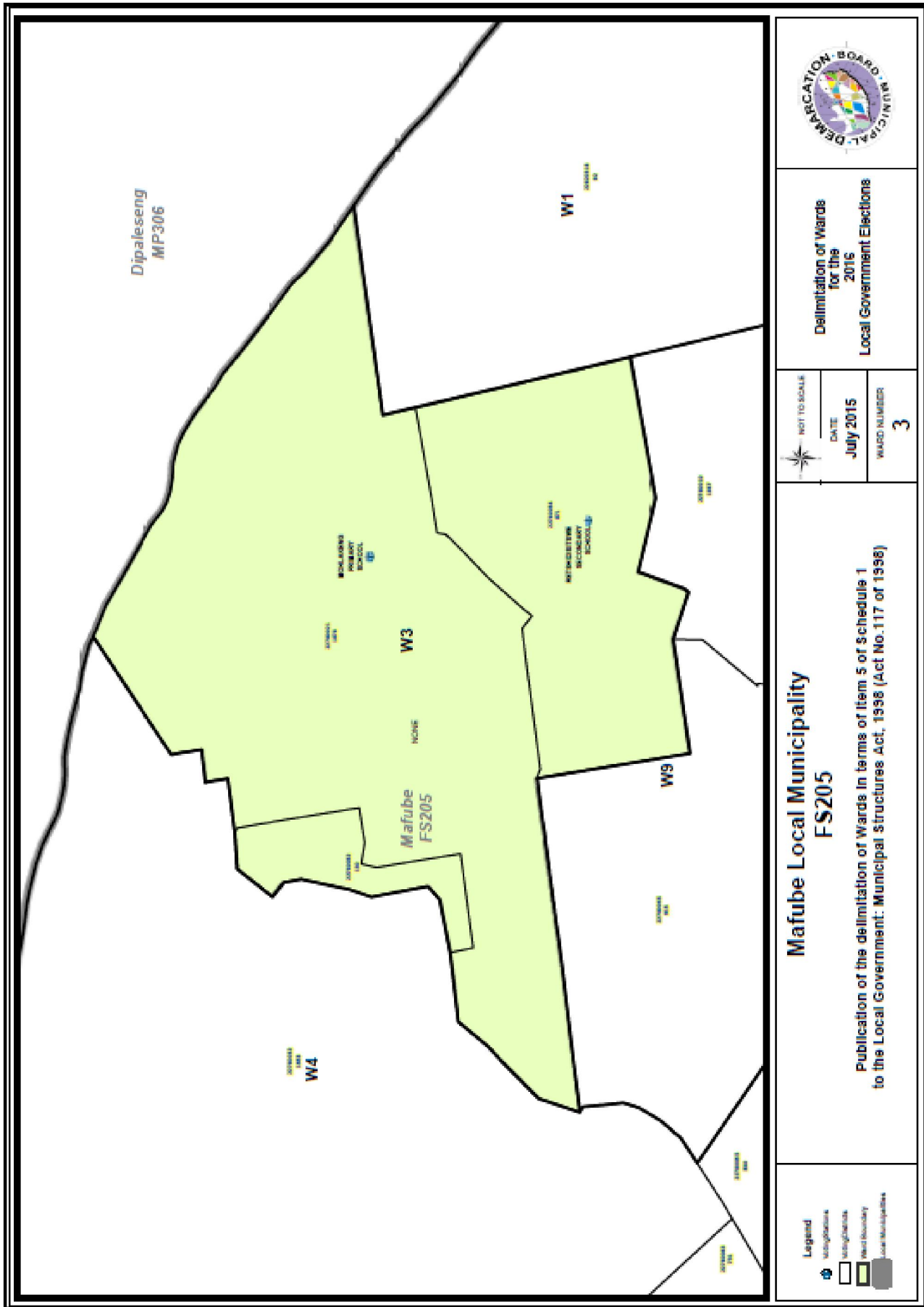
-----

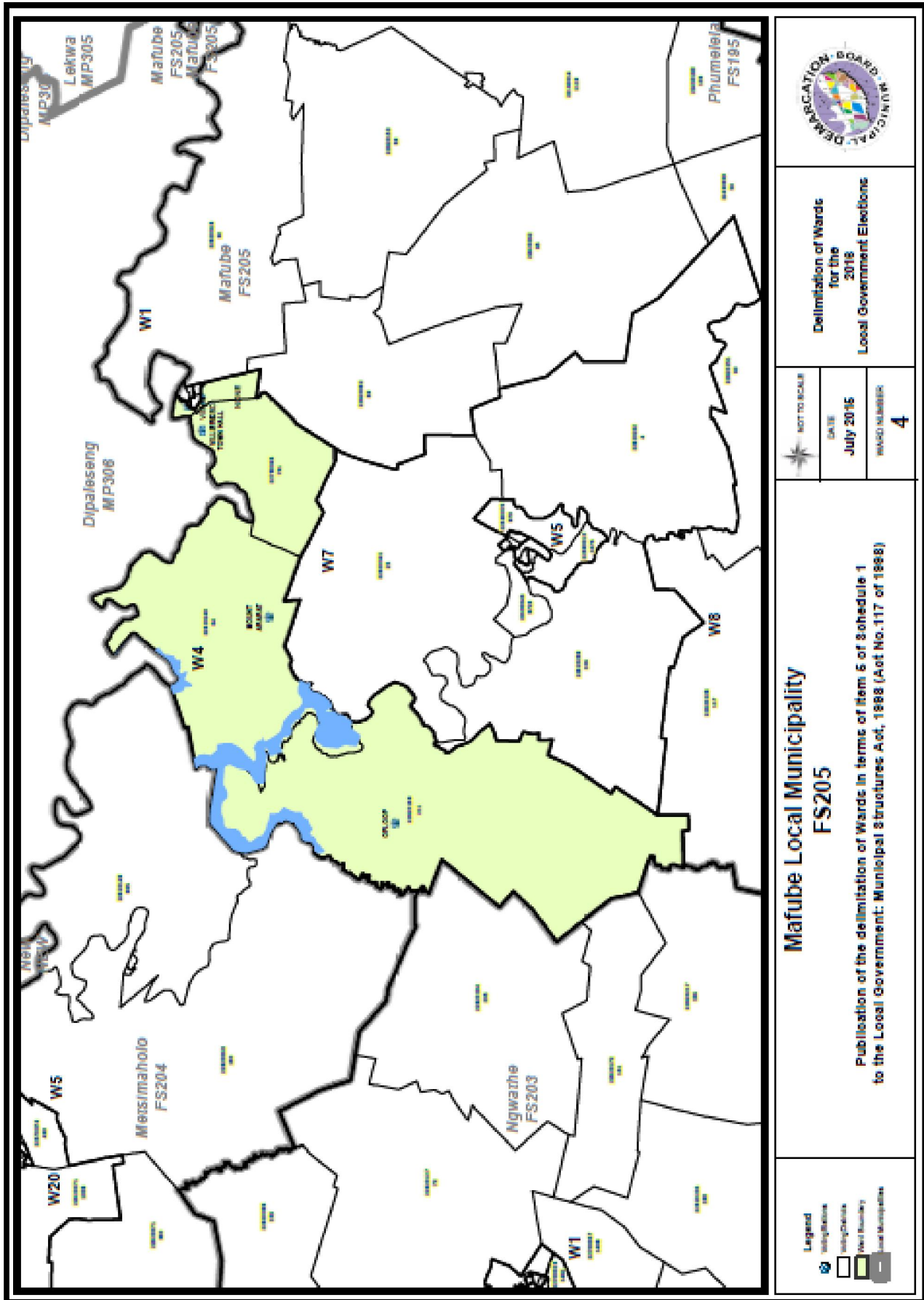


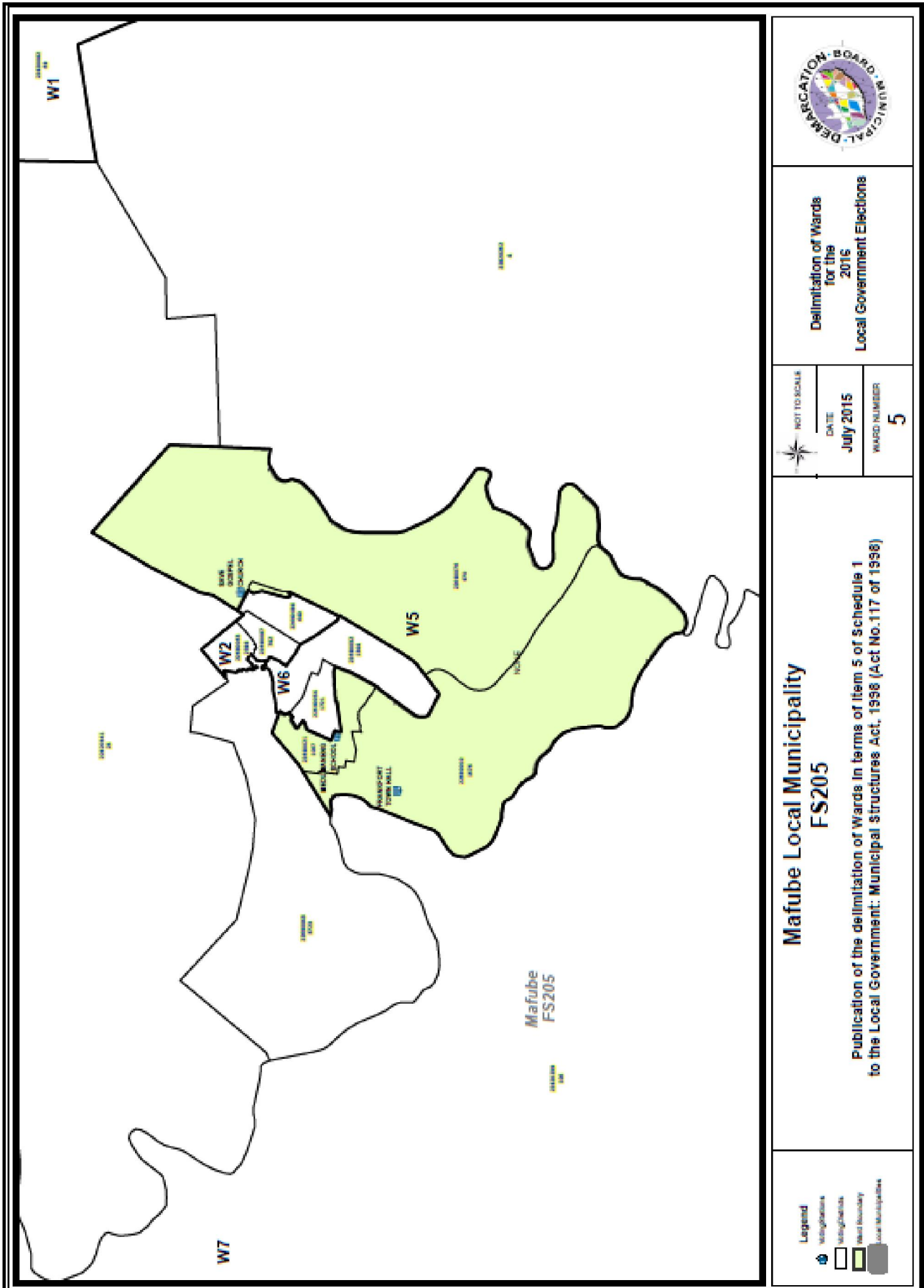


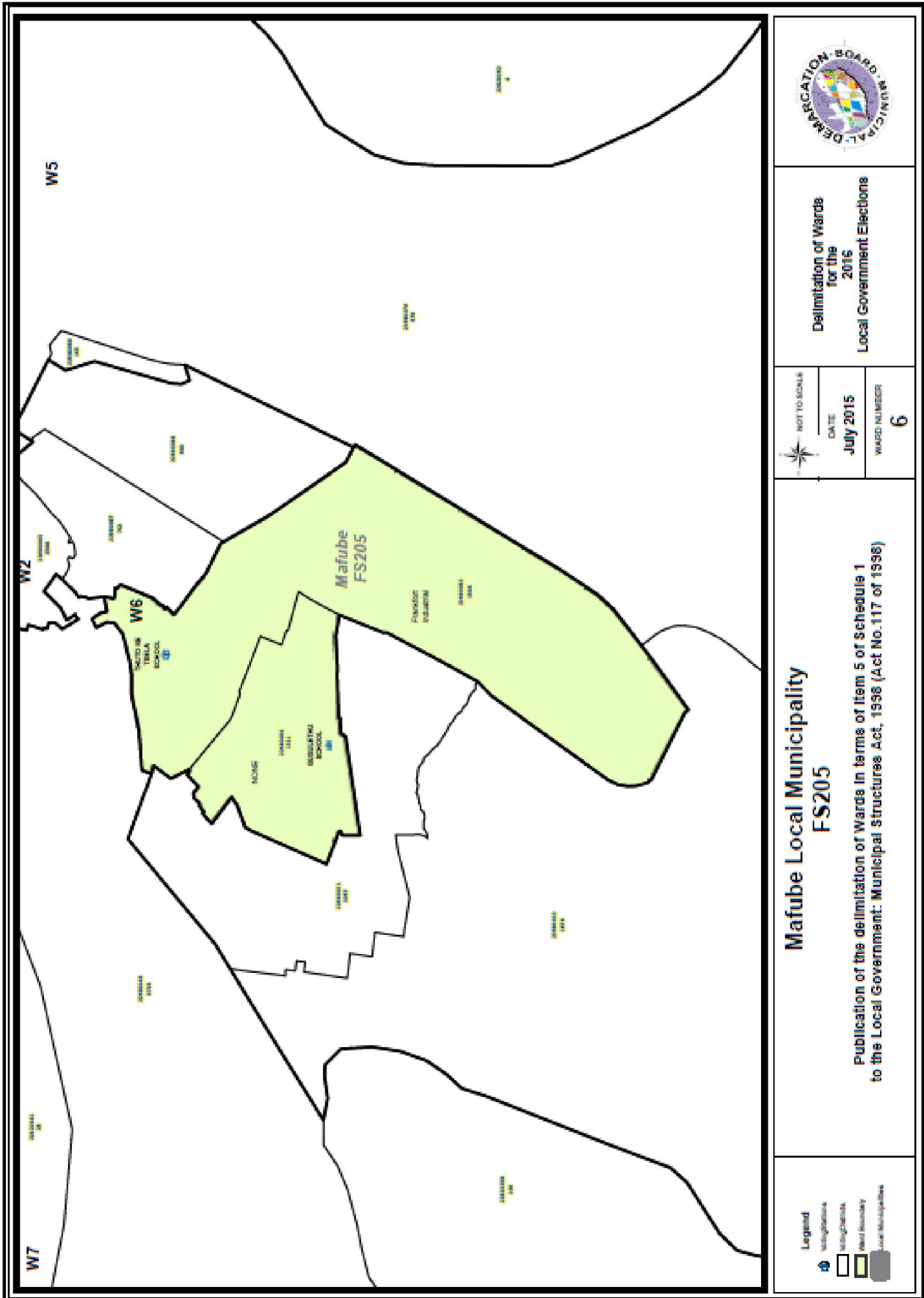


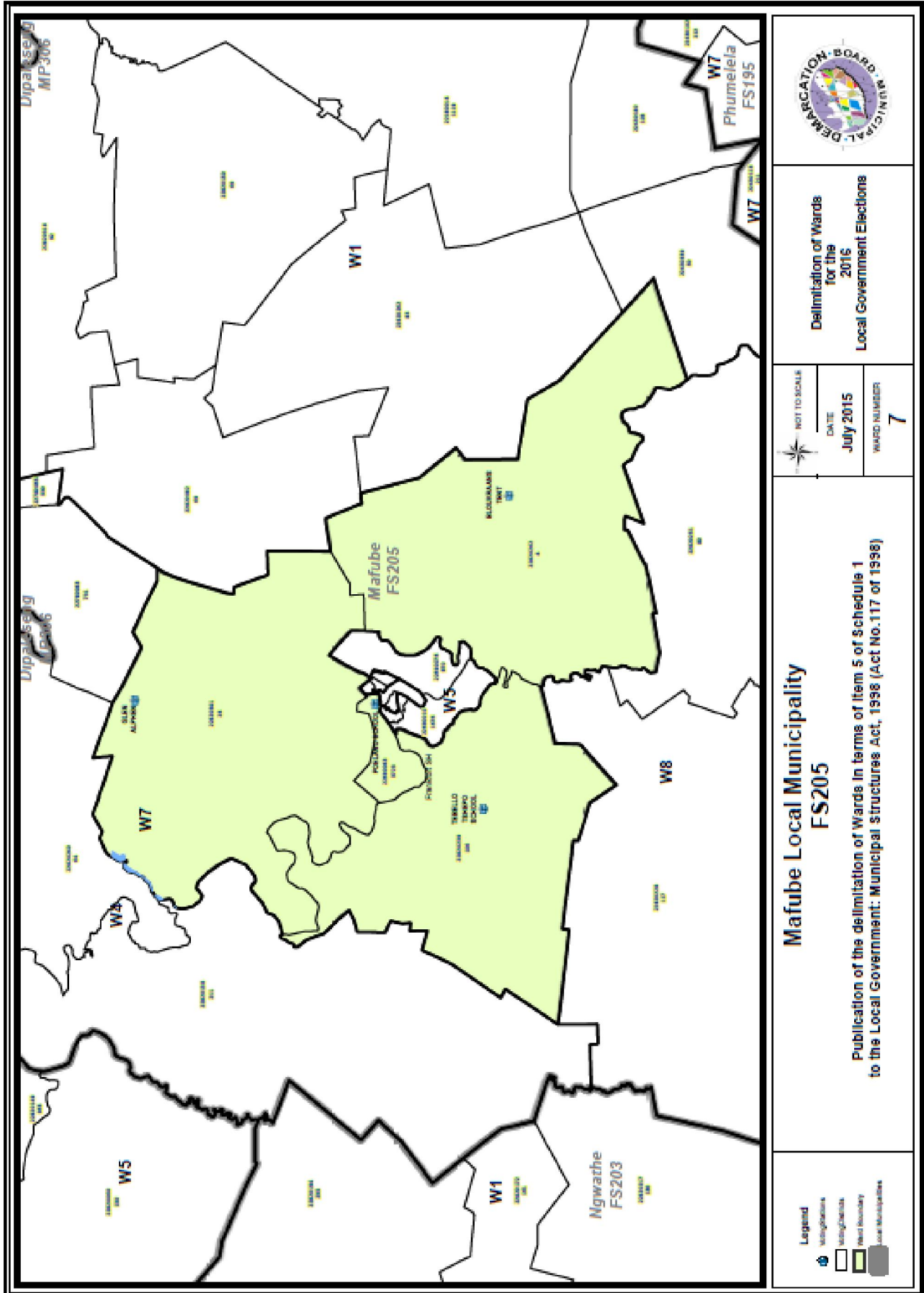












**Delimitation of Wards  
for the  
2015  
Local Government Elections**



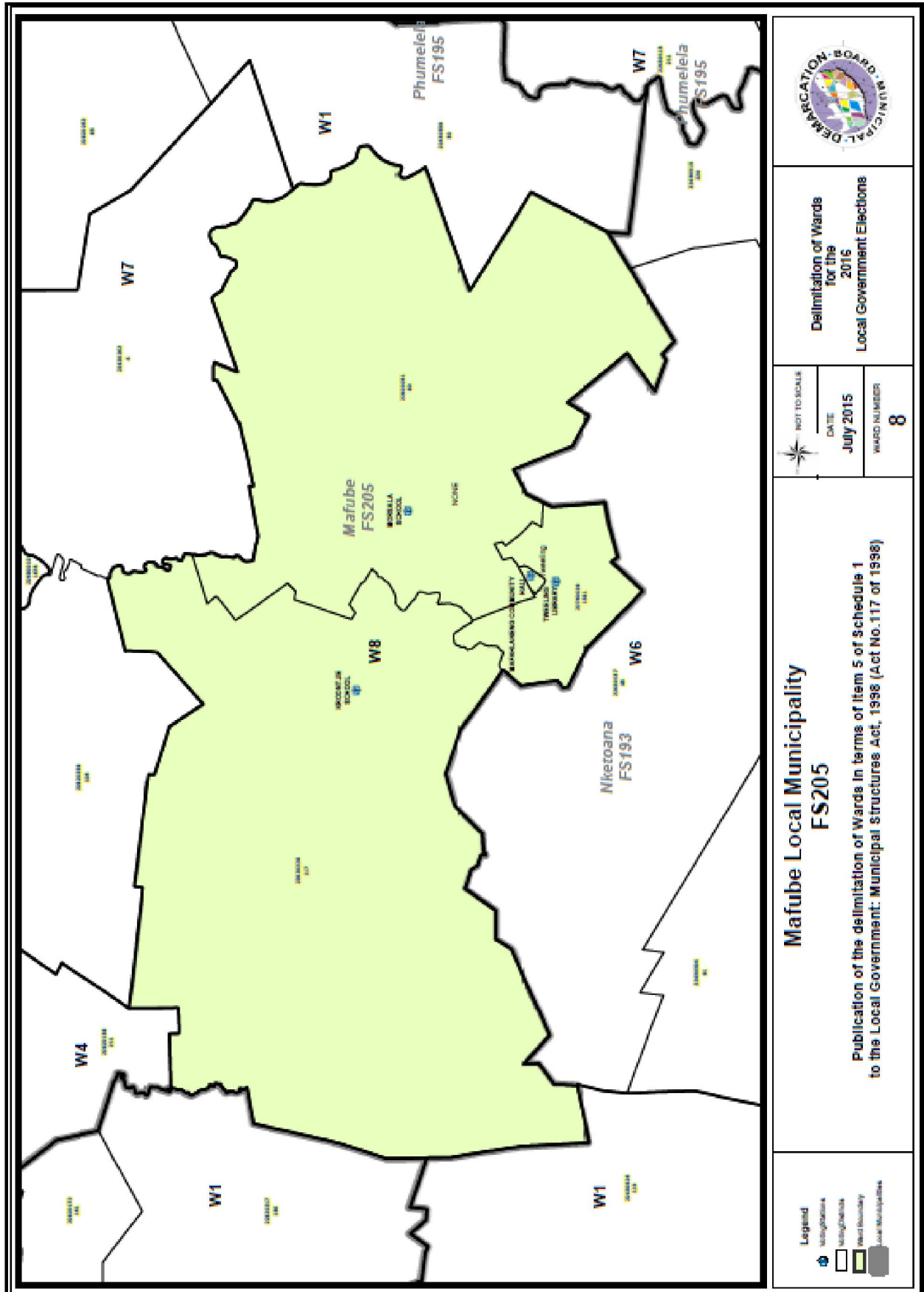
DATE  
**July 2015**

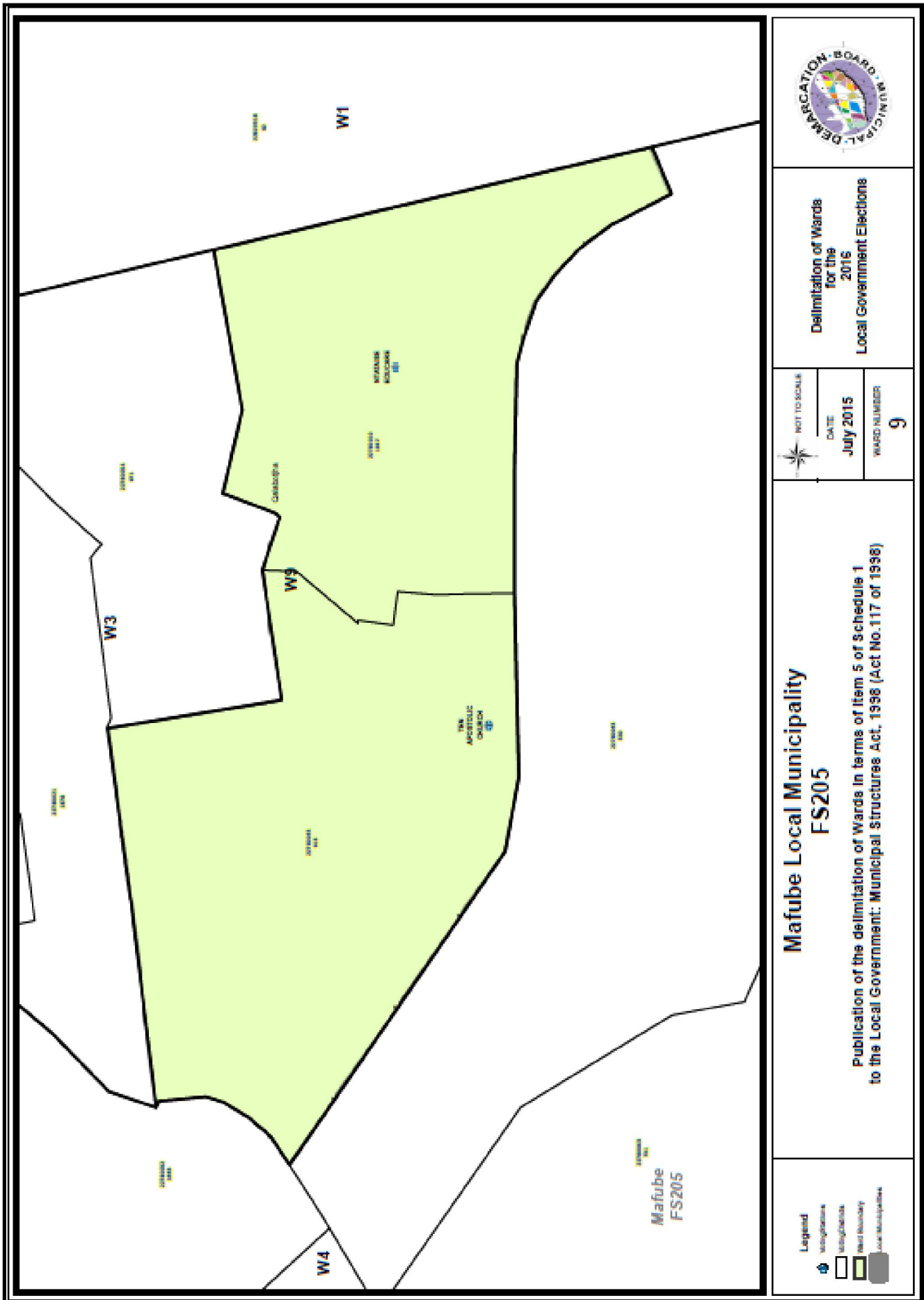
WARD NUMBER  
**7**

**Mafube Local Municipality  
FS205**

Publication of the delimitation of Wards in terms of Item 5 of Schedule 1  
to the Local Government: Municipal Structures Act, 1998 (Act No. 117 of 1998)

- Legend**
- Municipality
  - Ward boundary
  - Local municipality







**PROVINCIAL GAZETTE**  
(Published every Friday)

All correspondence, advertisements, etc. must be addressed to the Officer in charge of the Provincial Gazette, P.O. Box 517, Bloemfontein, Tel.: (051) 403 3139. Free Voucher copies of the Provincial Gazette or cuttings of advertisements are NOT supplied.

**Subscription Rates (payable in advance)**

The subscription fee for the Provincial Gazette (including all Extraordinary Provincial Gazettes) are as follows:

**SUBSCRIPTION: (POST)**

PRICE PER COPY	R 27.00
HALF-YEARLY	R 678.00
YEARLY	R 1 356.00

**SUBSCRIPTION: (OVER THE COUNTER / E-MAIL)**

PRICE PER COPY	R 19.00
HALF-YEARLY	R 470.00
YEARLY	R 940.00

Stamps are not accepted

**Closing time for acceptance of copy**

All advertisements must reach the Officer in Charge of the Provincial Gazette **not later than 16:00, three workings days** prior to the publication of the Gazette. Advertisements received after that time will be held over for publication in the issue of the following week, or if desired by the advertiser, will be inserted in the current issue as a "Late Advertisement". In such case the advertisement must be delivered to the Officer in Charge **not later than 08:00 on the Tuesday** preceding the publication of the Gazette and double rate will be charged for that advertisement.

A "Late Advertisement" will not be inserted as such without definite instructions from the advertiser.

**Advertisement Rates**

Notices required by Law to be inserted in the Provincial Gazette: **R29.50** per centimeter or portion thereof, single column.

Advertisement fees are payable in advance to the Officer in charge of the Provincial Gazette, P.O. Box 517, Bloemfontein, 9300, Tel.: (051) 403 3139.

**NUMBERING OF PROVINCIAL GAZETTE**

You are hereby informed that the numbering of the Provincial Gazette /Tender Bulletin and notice numbers will from 2010 coincide with the relevant financial year. In other words, the chronological numbering starting from one will commence on or after 1 April of every year.

Printed and published by the Free State Provincial Government

**PROVINSIALE KOERANT**  
(Verskyn elke Vrydag)

Alle korrespondensie, advertensies, ens. moet aan die Beampte Belas met die Provinsiale Koerant, Posbus 517, Bloemfontein, Tel.: No. (051) 403 3139 geadresseer word. Gratis eksemplare van die Provinsiale Koerant of uitknipsels van advertensies word NIE verskaf nie.

**Intekengeld (vooruitbetaalbaar)**

Die intekengeld vir die Provinsiale Koerant (insluitend alle Buitengewone Provinsiale Koerante) is soos volg:

**INTEKENGELD: (POS)**

PRYS PER EKSEMPLAAR	R 27.00
HALFJAARLIKS	R 678.00
JAARLIKS	R 1 356.00

**INTEKENGELD: (OOR DIE TOONBANK / E-POS)**

PRYS PER EKSEMPLAAR	R 19.00
HALFJAARLIKS	R 470.00
JAARLIKS	R 940.00

Seëls word nie aanvaar nie.

**Sluitingstyd vir die Aanneme van Kopie**

Alle advertensies moet die Beampte Belas met die Provinsiale Koerant bereik **nie later nie as 16:00 drie werksdae** voordat die Koerant uitgegee word. Advertensies wat na daardie tyd ontvang word, word oorgehou vir publikasie in die uitgawe van die volgende week, of as die adverteerder dit verlang, sal dit in die Koerant wat op die pers is as 'n "Laat Advertensie" geplaas word. In sulke gevalle moet die advertensie aan die Beampte oorhandig word **nie later nie as 08:00 op die Dinsdag** voordat die Koerant gepubliseer word en dubbeltarief sal vir dié advertensie gevra word.

'n "Laat Advertensie" sal nie sonder definitiewe instruksies van die Adverteerder as sodanige geplaas word nie.

**Advertensietariewe**

Kennisgewings wat volgens Wet in die Provinsiale Koerant geplaas moet word: **R29.50** per sentimeter of deel daarvan, enkel-kolom.

Advertensiegelde is vooruitbetaalbaar aan die Beampte belas met die Provinsiale Koerant, Posbus 517, Bloemfontein 9300, Tel.: (051) 403 3139.

**NOMMERING VAN PROVINSIALE KOERANT**

U word hiermee in kennis gestel dat die nommering van die Provinsiale Koerant / Tender Bulletin en kennisgewingnummers vanaf 2010 met die betrokke boekjaar sal ooreenstem. Met ander woorde, die kronologiese nommering beginnende met een, sal op of na 1 April van elke jaar begin.

Gedruk en uitgegee deur die Vrystaatse Provinsiale Regering