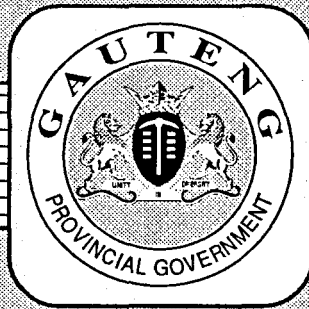


**THE PROVINCE OF
GAUTENG**



**DIE PROVINSIE
GAUTENG**

**Provincial Gazette Extraordinary
Buitengewone Provinsiale Koerant**

Vol. 12

PRETORIA, 1 SEPTEMBER 2006

No. 337

We all have the power to prevent AIDS

AIDS
affects
us all



A
new
struggle

**AIDS
HELPLINE**

0800 012 322

DEPARTMENT OF HEALTH

Prevention is the cure



9771682452005



06337

CONTENTS • INHOUD

No.		Page No.	Gazette No.
GENERAL NOTICES			
3648	Gauteng Transport Infrastructure Act (8/2001): Proclamation of a provincial railway line in connection with the Gautrain Rapid Rail Link project between Pretoria, Johannesburg and the Johannesburg International Airport.....	3	337
3649	do.: do.....	9	337

GENERAL NOTICES

NOTICE 3648 OF 2006

PROCLAMATION OF A PROVINCIAL RAILWAY LINE IN CONNECTION WITH THE GAUTRAIN RAPID RAIL LINK PROJECT BETWEEN PRETORIA, JOHANNESBURG AND THE JOHANNESBURG INTERNATIONAL AIRPORT

In terms of section 11(1)(b) of the Gauteng Transport Infrastructure Act, 2001 (Act No. 8 of 2001) the MEC hereby proclaims that a provincial railway line with varying widths exists on a portion of Allandale Road, Holdings 433 and 434, Portion 1 of Holding 435, Holding 436, a portion of Papillon Street, Portion 2 and the Remainder of Holding 437, Portion 1 of Holding 442, Holdings 443 and 444, portions of Ridge Road and Stag Road, the Remainder and Portions 1 and 2 of Holding 605, Portion 3 and the Remainder of Holding 452, Portion 1 of Holding 453 and a portion of West Road in Glen Austin Agricultural Holdings Extension 3, Portion 9, and the Remainder of Portion 133 of the farm Allandale 10-IR, Erf 50 – 42 in Allandale Extension 10, Portion 158 of the farm Allandale 10-IR, Portion 2 of Holding 278, the Remainder of Holdings 277 and 276, Holding 275, the Remainder of Holding 274 and a portion of Brand Road in President Park Agricultural Holdings, Erven 15 and 16 in President Park Extension 7, Portions 1 -7 and 9 of Holding 286, The Remainder of Holding 279, the Remainder of Holdings 284 and 285, Portion 2 and the Remainder of Holding 283 and a portion of Dale Road in President Park Agricultural Holdings, the Remainder of Portion 3, portion of New Road and the Remainders of Portions 32 and 728 of the farm Randjesfontein 405-JR, the Remainder of Holding 194, a portion of Donovan Road, the Remainder of Holding 195, Portion 1 of Holding 198, Holding 199, Portion 1 of Holding 200, the Remainder of Holding 203, a portion of Douglas Road, Portion 2 and the Remainder of Holding 204, Holding 207, Portion 3 of Holding 208, the Remainders of Holdings 211 and 212, Holding 214, the Remainder of Holding 215, Holding 217, a portion of George Road, Holding 218, Portion 1 of Holding 221, Portion 3 of Holding 222, Portions 1, 3, 5 and 6 of Holding 603, Portions 1 and 3 and the Remainder of Holding 225 in Glen Austin Agricultural Holdings, Portion 543 and the Remainder of Portions 578 and 738 of the farm Randjesfontein 405-JR, as indicated on the accompanying sketch plan, for the public purpose of implementing the Gautrain Rapid Rail Link project between Pretoria, Johannesburg and the Johannesburg International Airport.

In terms of section 23(6) of the aforementioned act it is hereby declared that boundary beacons, demarcating the said railway line, have been placed on the land and that plans GRP 03/38/22EXP – 25EXP and 24AEXP indicating the land encroached upon by virtue of the proclamation of the railway line, are available for inspection by any interested person, at the Plan Room of the Department of Public Transport, Roads and Works, First Floor, South Tower, Sage Life Building, 41 Simmonds Street, Johannesburg.

Reference : 2/8/1-Gautrain
MEC Resolution 006 dated 30 August 2006

02040000

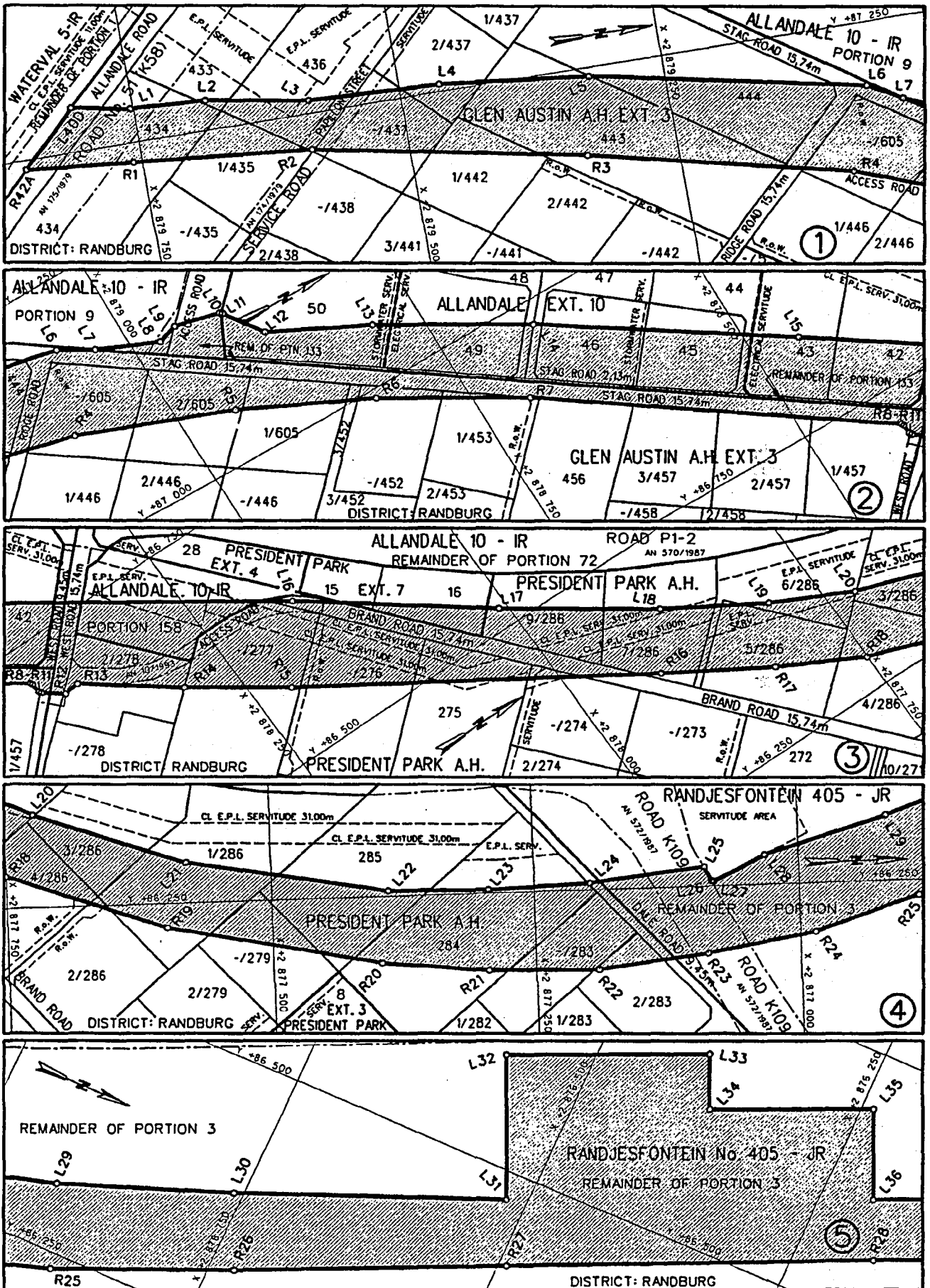
KENNISGEWING 3648 VAN 2006**PROKLAMASIE VAN 'N PROVINSIALE SPOORLYN IN VERBAND MET DIE GAUTREIN SNELSPoorVERBINDING-PROJEK TUSSEN PRETORIA, JOHANNESBURG EN DIE JOHANNESBURG INTERNASIONALE LUGHAWA**

Ingevolge artikel 11(1)(b) van die Gauteng Transport Infrastructure Act, 2001 (Act No. 8 of 2001) proklameer die LUR hiermee dat 'n provinsiale spoorlyn met wisselende breedtes bestaan op 'n gedeelte van Allandale Weg, Hoewe 433 en 434, Gedeelte 1 van Hoewe 435, Hoewe 436, 'n gedeelte van Papillonstraat, Gedeelte 2 en die Restant van Hoewe 437, Gedeelte 1 van Hoewe 442, Hoewes 443 en 444, gedeeltes van Ridgeweg en Stagweg, die Restant en Gedeeltes 1 en 2 van Hoewe 605, Gedeelte 3 en die Restant van Hoewe 452, Gedeelte 1 van Hoewe 453, 'n gedeelte van Westweg in Glen Austin Landbouhoewes Uitbreiding 3, Gedeelte 9 en die Restant van Gedeelte 133 van die plaas Allandale 10-IR, Erwe 50 – 42 in Allandale Uitbreiding 10, Gedeelte 158 van die plaas Allandale 10-JR, Gedeelte 2 van Hoewe 278, die Restant van Hoewes 277 en 276, Hoewe 275, die Restant van Hoewe 274 en 'n gedeelte van Brandstraat in Presidentpark Landbouhoewes, Erwe 15 en 16 in Presidentpark Uitbreiding 7, Gedeeltes 1 – 7 en 9 van Hoewe 286, die Restant van Hoewe 279, Hoewes 284 en 285, Gedeelte 2 en die Restant van Hoewe 283, en 'n gedeelte van Daleweg in Presidentpark Landbouhoewes, die Restant van Gedeelte 3 en 'n gedeelte van Newweg, die Restant van Gedeelte 32 en Gedeelte 728 van die plaas Randjesfontein 405-JR, die Restant van Hoewe 194, 'n gedeelte van Donovanweg, die Restant van Hoewe 195, Gedeelte 1 van Hoewe 198, Hoewe 199, Gedeelte 1 van Hoewe 200, die Restant van Hoewe 203, 'n gedeelte van Douglasweg, Gedeelte 2 en die Restant van Hoewe 204, Hoewe 207, Gedeelte 3 van 208, die Restant van Hoewes 211 en 212, Hoewe 214, die Restant van Hoewe 215, Hoewe 217 'n gedeelte van Georgeweg, Hoewe 218, Gedeelte 1 van Hoewe 221, Gedeelte 3 van Hoewe 222, Gedeeltes 1, 3, 5 en 6 van Hoewe 603, Gedeeltes 1 en 3 en die Restant van Hoewe 225 in Glen Austin Landbouhoewes, Gedeelte 543 en die Restant van Gedeeltes 578 en 738 van die plaas Randjesfontein 405-JR soos op die bygaande sketsplan aangetoon, vir die openbare doel om die Gautrein Snelspoorverbinding-projek tussen Pretoria, Johannesburg en die Johannesburg Internasionale Lughawe te implementeer.

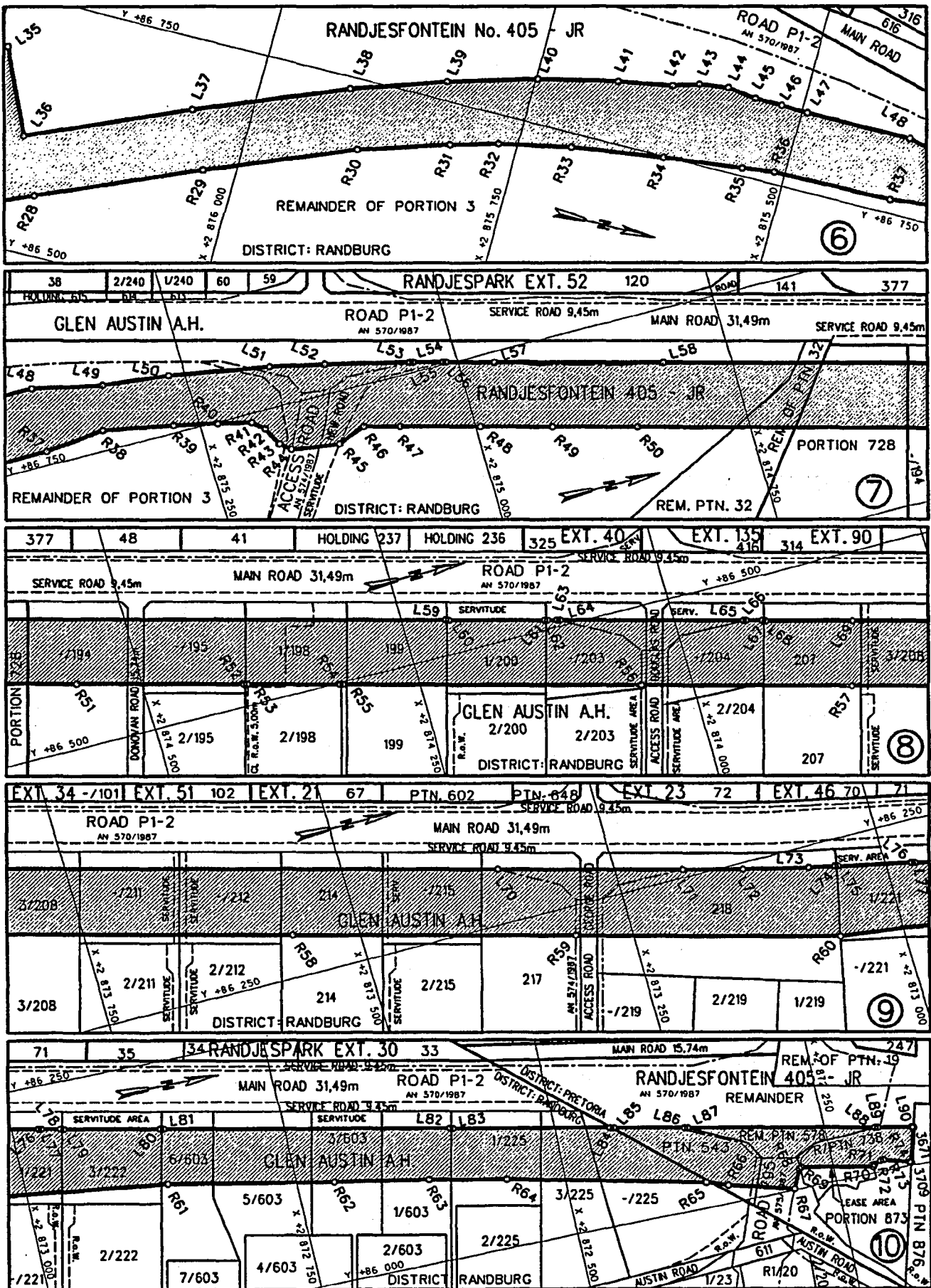
Ingevolge artikel 23(6) van voormelde wet word hiermee verklaar dat grensbakens wat gemelde spoorlyn aandui op die grond geplaas is en dat planne GRP 03/38/22Exp – 25Exp en 24AExp wat kragtens die proklamasie van die spoorlyn in beslag geneem is, by die Plankamer van die Departement van Openbare Vervoer, Paaie en Werke, Eerste Vloer, Suidtoring, Sage Life Gebou, Simmondsstraat 41, Johannesburg deur enige belanghebbende persoon ter insae beskikbaar is.

Verwysing : 2/1/8/1-Gautrain

LUR Besluit 006 gedateer 30 Augustus 2006



00004000



REFERENCE / VERWYSINGS

**GEPROKLAMEERDE SPOORLYN
PROCLAIMED RAILWAY LINE**



DIE FIGUUR : L40D, L1 - L90, 3671, 3709, R74 - R1, R42A, L40D.
THE FIGURE :

VERTEENWOORDIG DIE PROKLAMASIE VAN DIE BETROKKE GEDEELTE VAN DIE SPOORLYN OOR 'N GEDEELTE VAN ALLANDALEWEG, HOEWES 433 EN 434, GEDEELTE 1 VAN HOEWE 435, HOEWE 436, 'N GEDEELTE VAN PAPILLONSTRAAT, GEDEELTE 2 EN DIE RESTANT VAN HOEWE 437, GEDEELTE 1 VAN HOEWE 442, HOEWES 443 EN 444, GEDEELTES VAN RIDGEWEG EN STAGWEG, DIE RESTANT EN GEDEELTES 1 EN 2 VAN HOEWE 605, GEDEELTE 3 EN DIE RESTANT VAN HOEWE 452, GEDEELTE 1 VAN HOEWE 453, 'N GEDEELTE VAN WESTWEG IN GLEN AUSTIN LANDBOUHOEWES UITBREIDING 3, GEDEELTE 9 EN DIE RESTANT VAN GEDEELTE 133 VAN DIE PLAAS ALLANDALE 10-IR, ERWE 50 - 42 IN ALLANDALE UITBREIDING 10, GEDEELTE 158 VAN DIE PLAAS ALLANDALE 10-IR, GEDEELTE 2 VAN HOEWE 278, DIE RESTANTE VAN HOEWES 277 EN 276, HOEWE 275, DIE RESTANT VAN HOEWE 274 EN 'N GEDEELTE VAN BRANDWEG IN PRESIDENTPARK LANDBOUHOEWES, ERF 15 EN 16 IN PRESIDENTPARK UITBREIDING 7, GEDEELTES 1 - 7 EN 9 VAN HOEWE 286, DIE RESTANT VAN HOEWE 279, HOEWES 284 EN 285, GEDEELTE 2 EN DIE RESTANT VAN HOEWE 283 EN 'N GEDEELTE VAN DALEWEG IN PRESIDENTPARK LANDBOUHOEWES, DIE RESTANT VAN GEDEELTE 3 EN 'N GEDEELTE VAN NEWWEG, DIE RESTANT VAN GEDEELTE 32 EN GEDEELTE 728 VAN DIE PLAAS RANDJESFONTEIN 405-JR, DIE RESTANT VAN HOEWE 194, 'N GEDEELTE VAN DONOVANWEG, DIE RESTANT VAN HOEWE 195, GEDEELTE 1 VAN HOEWE 198, HOEWE 199, GEDEELTE 1 VAN HOEWE 200, DIE RESTANT VAN HOEWE 203, 'N GEDEELTE VAN DOUGLASWEG, GEDEELTE 2 EN DIE RESTANT VAN HOEWE 204, HOEWE 207, GEDEELTE 3 VAN HOEWE 208, DIE RESTANTE VAN HOEWES 211 EN 212, HOEWE 214, DIE RESTANT VAN HOEWE 215, HOEWE 217, 'N GEDEELTE VAN GEORGEWEG, HOEWE 218, GEDEELTE 1 VAN HOEWE 221, GEDEELTE 3 VAN HOEWE 222, GEDEELTES 1, 3, 5 EN 6 VAN HOEWE 603, GEDEELTES 1 EN 3 EN DIE RESTANT VAN HOEWE 225 IN GLEN AUSTIN LANDBOUHOEWES, GEDEELTE 543, DIE RESTANTE VAN GEDEELTES 578 EN 738 VAN DIE PLAAS RANDJESFONTEIN 405-JR SOOS BEDOEL BY DIE AFKONDIGING DAARVAN IN DIE PROVINSIALE KOERANT EN IN DETAIL GETOON OP PLANNE GRP 03/38/22Exp - 25Exp EN 24AExp.

REPRESENTS THE PROCLAMATION OF THE PORTION CONCERNED OF THE RAILWAY LINE OVER A PORTION OF ALLANDALE ROAD, HOLDINGS 433 AND 434, PORTION 1 OF HOLDING 435, HOLDING 436, A PORTION OF PAPILLON STREET, PORTION 2 AND THE REMAINDER OF HOLDING 437, PORTION 1 OF HOLDING 442, HOLDINGS 443 AND 444, PORTIONS OF RIDGE ROAD AND STAG ROAD, THE REMAINDER AND PORTIONS 1 AND 2 OF HOLDING 605, PORTION 3 AND THE REMAINDER OF HOLDING 452, PORTION 1 OF HOLDING 453 AND A PORTION OF WEST ROAD IN GLEN AUSTIN AGRICULTURAL HOLDINGS EXTENSION 3, PORTION 9 AND THE REMAINDER OF PORTION 133 OF THE FARM ALLANDALE 10-IR, ERVEN 50 - 42 IN ALLANDALE EXTENTION 10, PORTION 158 OF THE FARM ALLANDALE 10-IR, PORTION 2 OF HOLDING 278, THE REMAINDERS OF HOLDINGS 277 AND 276, HOLDING 275, THE REMAINDER OF HOLDING 274 AND A PORTION OF BRAND ROAD IN PRESIDENT PARK AGRICULTURAL HOLDINGS, ERVEN 15 AND 16 IN PRESIDENT PARK EXTENTION 7, PORTIONS 1 - 7 AND 9 OF HOLDING 286, THE REMAINDER OF HOLDING 279, HOLDINGS 284 AND 285, PORTION 2 AND THE REMAINDER OF HOLDING 283 AND A PORTION OF DALE ROAD IN PRESIDENT PARK AGRICULTURAL HOLDINGS, THE REMAINDER OF PORTION 3, A PORTION OF NEW ROAD AND THE REMAINDERS OF PORTIONS 32 AND 728 OF THE FARM RANDJESFONTEIN 405-JR, THE REMAINDER OF HOLDING 194, A PORTION OF DONOVAN ROAD, THE REMAINDER OF HOLDING 195, PORTION 1 OF HOLDING 198, HOLDING 199, PORTION 1 OF HOLDING 200, THE REMAINDER OF HOLDING 203, A PORTION OF DOUGLAS ROAD, PORTION 2 AND THE REMAINDER OF HOLDING 204, HOLDING 207, PORTION 3 OF HOLDING 208, THE REMAINDERS OF HOLDINGS 211 AND 212, HOLDING 214, THE REMAINDER OF HOLDING 215, HOLDING 217, A PORTION OF GEORGE ROAD, HOLDING 218, PORTION 1 OF HOLDING 221, PORTION 3 OF HOLDING 222, PORTIONS 1, 3, 5 AND 6 OF HOLDING 603, PORTIONS 1 AND 3 AND THE REMAINDER OF HOLDING 225 IN GLEN AUSTIN AGRICULTURAL HOLDINGS, PORTION 543, THE REMAINDERS OF PORTIONS 578 AND 738 OF THE FARM RANDJESFONTEIN 405-JR AS INTENDED BY THE PUBLICATION THEREOF IN THE PROVINCIAL GAZETTE AND SHOWN IN DETAIL ON PLANS GRP 03/38/22Exp - 25Exp AND 24AExp.

BUNDEL NR. / FILE NO. 2/1/6/1

04040000

KOÖRDINATE LYS/CO-ORDINATE LIST WG 29° KONST./CONST. Y- +/- 0.00 X- +2 800 000.00								
L40D	+87293.671	+79808.026	L56	+86751.720	+75010.786	R22	+86170.253	+77190.519
R42A	+87240.619	+79861.737	L57	+86739.766	+74966.407	R23	+86183.141	+77087.538
L1	+87283.216	+79752.743	L58	+86697.915	+74811.976	R24	+86201.448	+76985.192
L2	+87279.421	+79681.977	L59	+86534.501	+74209.042	R25	+86234.603	+76886.643
L3	+87262.646	+79587.185	L60	+86533.716	+74206.146	R26	+86303.916	+76727.471
L4	+87257.152	+79460.867	L61	+86509.800	+74117.912	R27	+86413.329	+76492.307
L5	+87241.188	+79320.493	L62	+86509.011	+74115.017	R28	+86558.968	+76177.832
L6	+87186.707	+79063.501	L63	+86506.654	+74106.430	R29	+86624.718	+76030.282
L7	+87168.089	+79031.656	L64	+86505.866	+74103.536	R30	+86681.649	+75896.005
L8	+87142.268	+78973.654	L65	+86460.938	+73937.511	R31	+86709.053	+75812.715
L9	+87148.999	+78954.685	L66	+86460.153	+73934.616	R32	+86721.841	+75768.382
L10	+87138.646	+78912.542	L67	+86456.229	+73920.161	R33	+86736.449	+75700.091
L11	+87137.047	+78910.244	L68	+86455.443	+73917.266	R34	+86748.883	+75614.098
L12	+87100.937	+78885.783	L69	+86433.475	+73836.233	R35	+86757.760	+75540.608
L13	+87054.692	+78794.913	L70	+86303.580	+73356.961	R36	+86761.894	+75510.583
L14	+86976.637	+78662.787	L71	+86257.828	+73187.941	R37	+86763.696	+75395.837
L15	+86837.053	+78454.559	L72	+86243.558	+73133.241	R38	+86770.207	+75339.378
L16	+86639.091	+78165.882	L73	+86228.817	+73072.160	R39	+86757.555	+75273.841
L17	+86519.816	+78007.982	L74	+86223.447	+73047.606	R40	+86748.777	+75233.316
L18	+86432.760	+77884.150	L75	+86222.809	+73044.674	R41	+86741.184	+75202.065
L19	+86378.694	+77796.428	L76	+86207.774	+72975.386	R42	+86731.984	+75191.657
L20	+86341.433	+77722.993	L77	+86207.145	+72972.453	R43	+86714.116	+75182.812
L21	+86289.828	+77578.508	L78	+86203.497	+72955.247	R44	+86705.928	+75173.618
L22	+86255.245	+77389.010	L79	+86202.875	+72952.313	R45	+86699.746	+75129.120
L23	+86253.061	+77293.047	L80	+86183.926	+72862.867	R46	+86710.455	+75102.691
L24	+86256.695	+77197.198	L81	+86183.304	+72859.932	R47	+86701.783	+75069.723
L25	+86269.149	+77089.611	L82	+86127.804	+72597.986	R48	+86681.604	+74995.465
L26	+86254.852	+77082.480	L83	+86127.182	+72595.051	R49	+86663.572	+74929.309
L27	+86254.190	+77080.473	L84	+86095.102	+72448.315	R50	+86642.743	+74852.455
L28	+86279.255	+77031.233	L85	+86095.480	+72445.381	R51	+86563.212	+74560.138
L29	+86314.096	+76915.593	L86	+86081.622	+72380.055	R52	+86521.923	+74408.203
L30	+86373.667	+76758.645	L87	+86081.000	+72377.120	R53	+86521.137	+74405.308
L31	+86473.216	+76519.082	L88	+86044.081	+72202.807	R54	+86498.453	+74321.883
L32	+86604.584	+76577.816	L89	+86043.459	+72199.873	R55	+86497.666	+74318.988
L33	+86682.967	+76403.233	L90	+86036.731	+72168.177	R56	+86423.617	+74046.578
L34	+86632.757	+76380.784	L91	+86036.110	+72165.242	R57	+86371.057	+73853.397
L35	+86696.087	+76239.137	R1	+87230.500	+79758.492	R58	+86291.423	+73560.704
L36	+86613.925	+76202.403	R2	+87214.233	+79592.468	R59	+86221.024	+73301.630
L37	+86679.949	+76054.976	R3	+87164.058	+79335.098	R60	+86155.493	+73060.547
L38	+86738.002	+75917.462	R4	+87105.331	+79091.322	R61	+86129.534	+72867.149
L39	+86768.571	+75830.781	R5	+87049.809	+78949.030	R62	+86099.340	+72715.438
L40	+86793.570	+75748.508	R6	+86991.220	+78828.901	R63	+86082.740	+72628.382
L41	+86810.700	+75674.159	R7	+86916.541	+78702.525	R64	+86067.270	+72554.868
L42	+86819.836	+75623.707	R8	+86713.580	+78415.092	R65	+86025.056	+72371.011
L43	+86827.800	+75600.553	R9	+86711.222	+78413.727	R66	+86017.871	+72351.571
L44	+86831.382	+75573.654	R10	+86701.979	+78412.866	R67	+86001.195	+72290.406
L45	+86827.457	+75545.922	R11	+86699.583	+78411.528	R68	+86019.530	+72281.934
L46	+86827.672	+75520.112	R12	+86685.446	+78392.731	R69	+86020.588	+72279.836
L47	+86826.560	+75495.023	R13	+86686.846	+78377.601	R70	+86006.502	+72211.902
L48	+86827.149	+75393.408	R14	+86626.178	+78296.643	R71	+86008.502	+72210.567
L49	+86812.981	+75327.849	R15	+86569.180	+78215.276	R72	+86010.868	+72203.913
L50	+86806.132	+75265.186	R16	+86379.835	+77919.670	R73	+86010.921	+72201.059
L51	+86790.245	+75171.637	R17	+86323.221	+77827.330	R74	+86003.369	+72176.991
L52	+86779.582	+75121.873	R18	+86281.556	+77750.516	R75	+86001.470	+72175.943
L53	+86760.714	+75044.122	R19	+86225.846	+77597.353	3671	+86036.408	+72166.710
L54	+86759.968	+75041.217	R20	+86183.539	+77396.536	3709	+86002.920	+72175.560
L55	+86752.502	+75013.682	R21	+86172.968	+77294.153			

NOTICE 3649 OF 2006**PROCLAMATION OF A PROVINCIAL RAILWAY LINE IN CONNECTION WITH THE GAUTRAIN RAPID RAIL LINK PROJECT BETWEEN PRETORIA, JOHANNESBURG AND THE JOHANNESBURG INTERNATIONAL AIRPORT**

In terms of section 11(1)(b) of the Gauteng Transport Infrastructure Act, 2001 (Act No. 8 of 2001) the MEC hereby proclaims that a provincial railway line with varying widths exists on a portion of Rebecca Road in Spartan Extension 13, Portions 319 and 391 of the farm Zuurfontein 33-IR, Erf 271, a portion of Lovato Road, Portion 1 and the Remainder of Erf 272, Portions 3 and 4 of Erf 273, Portion 1 and the Remainder of Erf 275, Erven 721 and 277, Portions 3, 5, 6 and the Remainder of Erf 475 in Spartan Extension 1, Erf 819 in Spartan Extension 26, portions of Zuurfontein Road, Portion 244 of the farm Zuurfontein 33-IR, Erf 757 in Spartan Extension 24, Erven 246, Erven 248 – 262, Erf 703, Erven 657 – 684 and a portion of Chestnut Street in Cresslawn Township, Portions 1, 2, 3 and the Remainder of Erf 262 in Spartan, Erf 258 a portion of Newton Road, Portions 1, 2, 3 and the Remainder of Erf 263 in Spartan, Portion 211 of Erf 602 in Spartan Extension 2 as indicated on the accompanying sketch plan, for the public purpose of implementing the Gautrain Rapid Rail Link project between Pretoria, Johannesburg and the Johannesburg International Airport.

In terms of section 23(6) of the aforementioned act it is hereby declared that boundary beacons, demarcating the said railway line, have been placed on the land and that plans GRP 03/38/15Exp – 17Exp indicating the land encroached upon by virtue of the proclamation of the railway line, are available for inspection by any interested person, at the Plan Room of the Department of Public Transport, Roads and Works, First Floor, South Tower, Sage Life Building, 41 Simmonds Street, Johannesburg.

Reference : 2/1/8/1-Gautrain

MEC Resolution 006 dated 30 August 2006

KENNISGEWING 3649 VAN 2006**PROKLAMASIE VAN 'N PROVINSIALE SPOORLYN IN VERBAND MET DIE GAUTREIN SNELSPoorVERBINDING-PROJEK TUSSEN PRETORIA, JOHANNESBURG EN DIE JOHANNESBURG INTERNASIONALE LUGHAWE**

Ingevolge artikel 11(1)(b) van die Gauteng Transport Infrastructure Act, 2001 (Act No. 8 of 2001) proklameer die LUR hiermee dat 'n provinsiale spoorlyn met wisselende breedtes bestaan op 'n gedeelte van Rebecaweg in Spartan Uitbreiding 13, Gedeeltes 319 en 391 van die plaas Zuurfontein 33-IR, Erf 271, 'n gedeelte van Lovatostraat, die Restant en Gedeelte 1 van Erf 272, Gedeeltes 3 en 4 van Erf 273, Gedeelte 1 en die Restant van Erf 275, Erwe 721 en 277, Gedeeltes 3, 5, 6 en die Restant van Erf 476 in Spartan Uitbreiding 1, Erf 819 in Spartan Uitbreiding 26, gedeeltes van Zuurfonteinweg, Gedeelte 244 van die plaas Zuurfontein 33-IR, Erf 757 in Spartan Uitbreiding 24, Erf 246, Erwe 248 – 262, Erf 703, Erwe 657 – 684, en 'n gedeelte van Chestnutstraat in Cresslawn, Gedeeltes 1, 2, 3 en die Restant van Erf 262, Erf 258, 'n gedeelte van Newtonweg, Gedeeltes 1, 2, 3 en die Restant van Erf 263 in Spartan en Gedeelte 211 van Erf 602 in Spartan Uitbreiding 2 soos op die bygaande sketsplan aangetoon, vir die openbare doel om die Gautrein Snelspoorverbinding-projek tussen Pretoria, Johannesburg en die Johannesburg Internasionale Lughawe te implementeer.

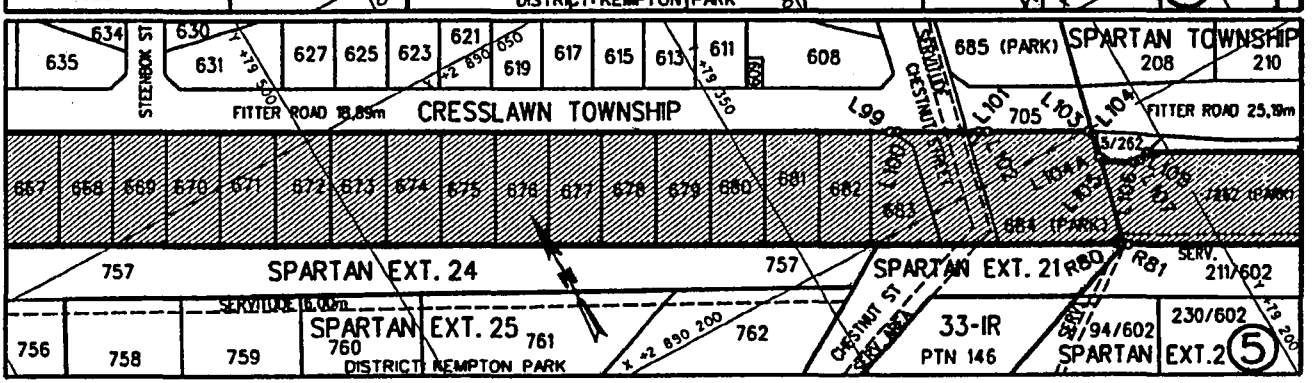
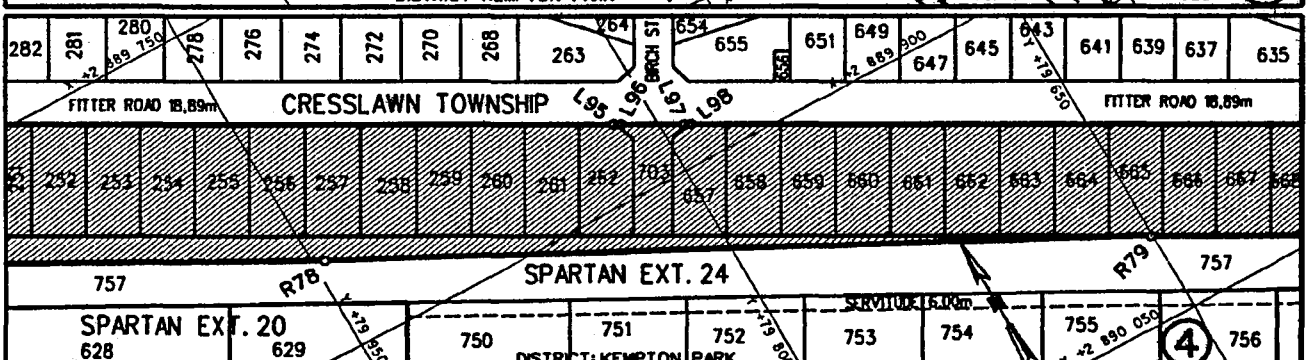
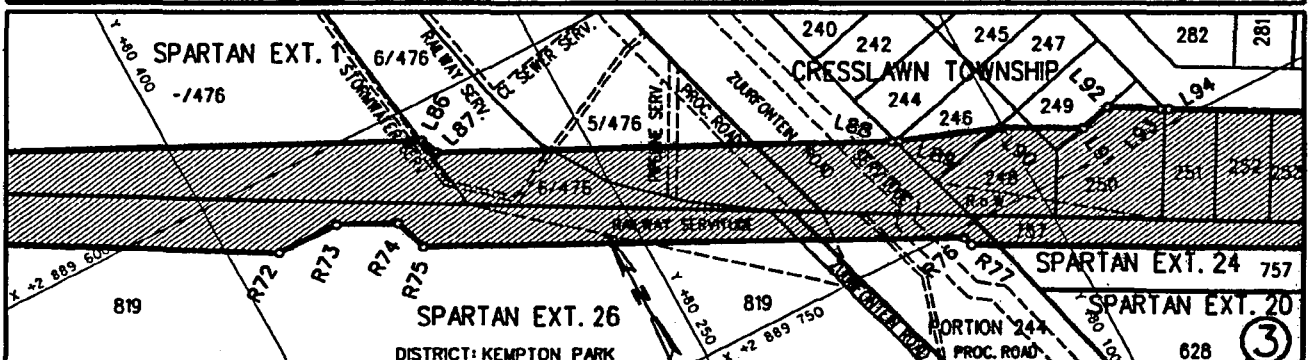
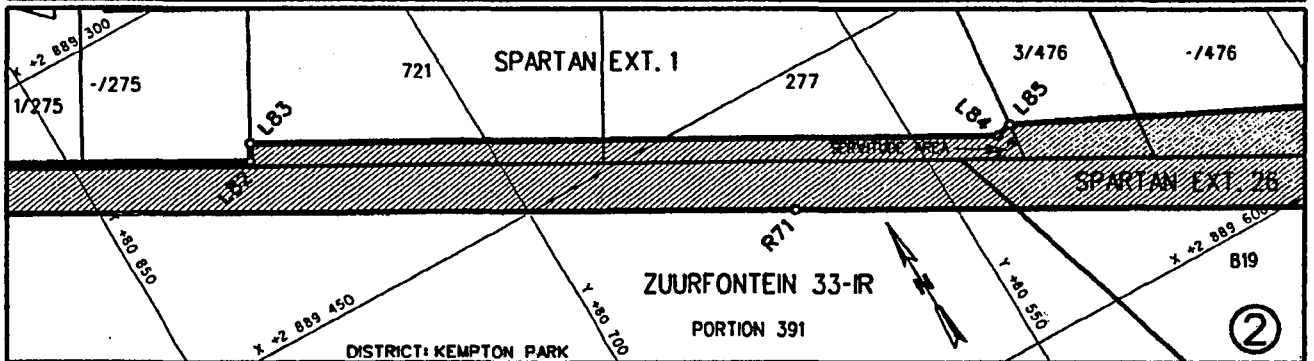
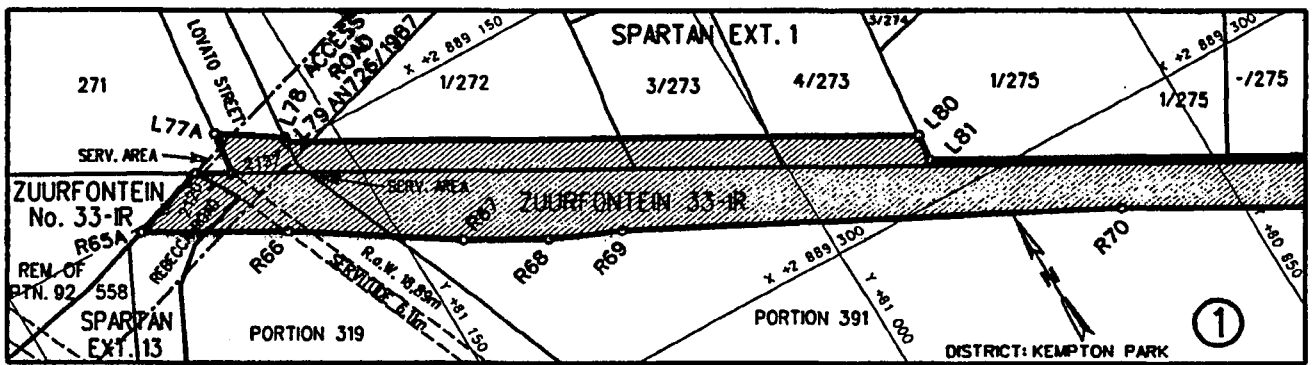
Ingevolge artikel 23(6) van voormelde wet word hiermee verklaar dat grensbakens wat gemelde spoorlyn aandui op die grond geplaas is en dat planne GRP 03/38/15Exp – 17Exp wat kragtens die proklamasie van die spoorlyn in beslag geneem is, by die Plankamer van die Departement van Openbare Vervoer, Paaie en Werke, Eerste Vloer, Suidtoring, Sage Life Gebou, Simmondsstraat 41, Johannesburg deur enige belanghebbende persoon ter insae beskikbaar is.

Verwysing : 2/1/8/1-Gautrain

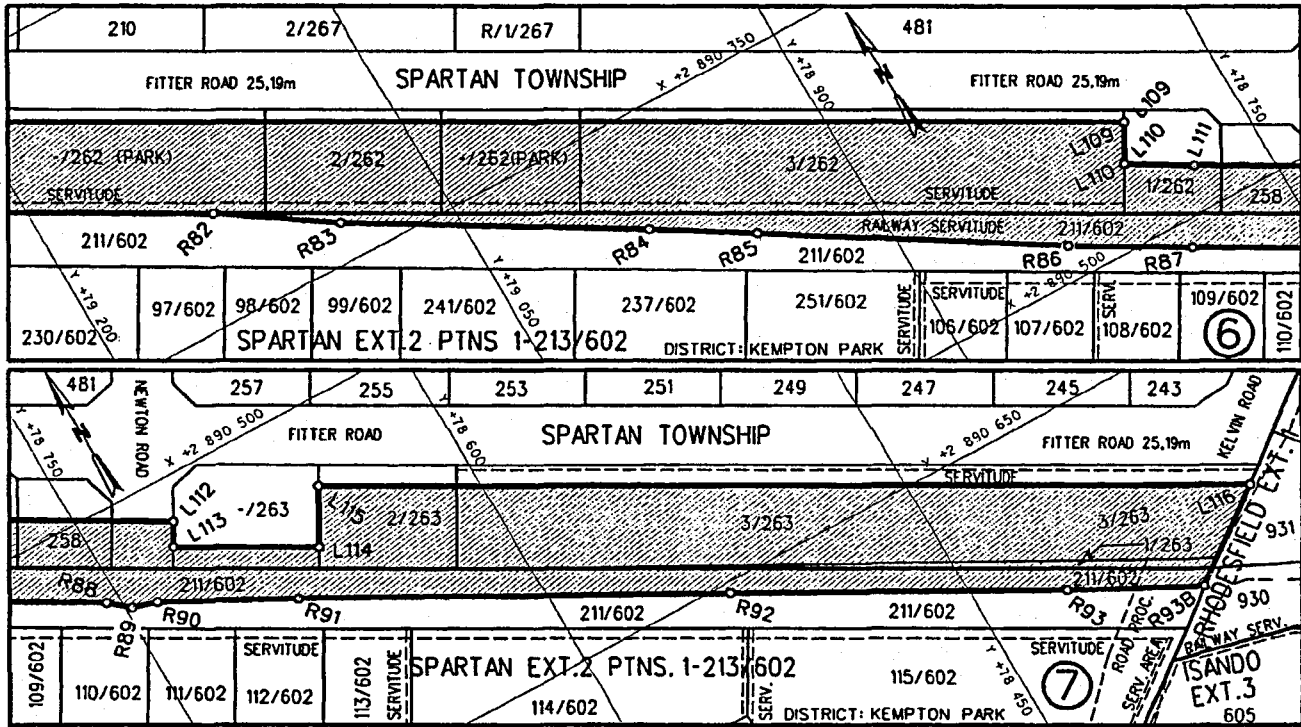
LUR Besluit 006 gedateer 30 Augustus 2006

HF/sb/notice gautrain3





00004000



REFERENCE / VERWYSINGS

GEPROKLAEMEERDE SPOORLYN
PROCLAIMED RAILWAY LINE



DIE FIGUUR : L77A, L78 - L104, L104A, L105 - L116, R93B, R93 - R66, R65A, 2120, 2137, L77A.
THE FIGURE :

VERTEENWOORDIG DIE PROKLAMASIE VAN DIE BETROKKE GEDEELTE VAN DIE SPOORLYN OOR 'N GEDEELTE VAN REBECCA WEG IN SPARTAN UITBREIDING 13, GEDEELTES 319 EN 391 VAN DIE PLAAS ZUURFONTEIN 33-IR, ERF 271, 'N GEDEELTE VAN LOVATO STRAAT, DIE RESTANT EN GEDEELTE 1 VAN ERF 272, GEDEELTES 3 EN 4 VAN ERF 273, GEDEELTE 1 EN DIE RESTANT VAN ERF 275, ERWE 721 EN 277, GEDEELTES 3, 5, 6 EN DIE RESTANT VAN ERF 476 IN SPARTAN UITBREIDING 1, ERF 819 IN SPARTAN UITBREIDING 26, GEDEELTES VAN ZUURFONTEIN WEG, GEDEELTE 244 VAN DIE PLAAS ZUURFONTEIN 33-IR, ERF 757 IN SPARTAN UITBREIDING 24, ERF 246, ERWE 248 - 262, ERF 703, ERWE 657 - 684 EN 'N GEDEELTE VAN CHESTNUT STRAAT IN CRESSLAWN, GEDEELTES 1 - 3 EN DIE RESTANT VAN ERF 262, ERF 258, 'N GEDEELTE VAN NEWTON WEG, GEDEELTES 1 - 3 EN DIE RESTANT VAN ERF 263 IN SPARTAN, GEDEELTE 211 VAN ERF 602 IN SPARTAN UITBREIDING 2 SOOS BEDOEL BY DIE AFKONDIGING DAARVAN IN DIE PROVINSIALE KOERANT EN IN DETAIL GETOON OP PLANNE GRP 03/38/15Exp - 17Exp.

REPRESENTS THE PROCLAMATION OF THE PORTION CONCERNED OF THE RAILWAY LINE OVER A: PORTION OF REBECCA ROAD IN SPARTAN EXTENSION 13, PORTIONS 319 AND 391 OF THE FARM ZUURFONTEIN 33-IR, ERF 271, A PORTION OF LOVATO ROAD, PORTION 1 AND THE REMAINDER OF ERF 272, PORTIONS 3 AND 4 OF ERF 273, PORTION 1 AND THE REMAINDER OF ERF 275, ERVEN 721 AND 277, PORTIONS 3, 5, 6 AND THE REMAINDER OF ERF 475 IN SPARTAN EXTENSION 1, ERF 819 IN SPARTAN EXTENSION 26, PORTIONS OF ZUURFONTEIN ROAD, PORTION 244 OF THE FARM ZUURFONTEIN 33-IR, ERF 757 IN SPARTAN EXTENSION 24, ERF 246, ERVEN 248 - 262, ERF 703, ERVEN 657 - 684 AND A PORTION OF CHESTNUT STREET IN CRESSLAWN, PORTIONS 1 - 3 AND THE REMAINDER OF ERF 262, ERF 258, A PORTION OF NEWTON ROAD, PORTIONS 1 - 3 AND THE REMAINDER OF ERF 263 IN SPARTAN, PORTION 211 OF ERF 602 IN SPARTAN EXTENSION 2 AS INTENDED BY THE PUBLICATION THEREOF IN THE PROVINCIAL GAZETTE AND SHOWN IN DETAIL ON PLANS GRP 03/38/15Exp - 17Exp.

BUNDEL NR. / FILE NO. 2/116/1

KOÖRDINATE LYS/CO-ORDINATE LIST WG 29° KONST./CONST. Y= +/- 0.00 X= +2 800 000.00

L77A	+81192.279	+89130.651	L102	+79260.004	+90180.734	R73	+80356.139	+89630.580
L78	+81168.947	+89146.029	L103	+79224.371	+90200.745	R74	+80334.344	+89641.689
L79	+81169.190	+89148.165	L104	+79223.426	+90202.935	R75	+80329.978	+89655.140
L80	+80947.897	+89272.268	L104A	+78225.779	+90212.345	R76	+80135.755	+89754.144
L81	+80949.181	+89283.548	L105	+79224.880	+90214.609	R77	+80134.446	+89758.292
L82	+80785.438	+89375.564	L106	+79214.776	+90221.081	R78	+79945.473	+89861.579
L83	+80781.815	+89368.961	L107	+79212.092	+90221.410	R79	+79650.596	+90015.552
L84	+80520.393	+89515.778	L108	+79207.844	+90219.976	R80	+79236.318	+90248.285
L85	+80513.811	+89513.919	L109	+78795.402	+90451.098	R81	+79233.702	+90249.755
L86	+80309.451	+89614.869	L110	+78804.111	+90466.627	R82	+79134.101	+90305.722

KOÖRDINATE LYS/CO-ORDINATE LIST WG 29° KONST./CONST. Y= +/- 0.00 X= +2 800 000.00								
L87	+80306.566	+89622.176	L111	+78779.648	+90481.100	R83	+79092.291	+90333.761
L88	+80141.838	+89704.205	L112	+78714.851	+90518.116	R84	+78984.848	+90397.165
L89	+80139.088	+89705.392	L113	+78720.235	+90527.711	R85	+78947.530	+90419.969
L90	+80101.385	+89719.259	L114	+78669.494	+90556.219	R86	+78840.971	+90485.763
L91	+80071.740	+89735.232	L115	+78656.821	+90533.517	R87	+78797.055	+90511.003
L92	+80059.016	+89731.801	L116	+78327.798	+90717.245	R88	+78755.551	+90534.737
L93	+80040.084	+89742.672				R89	+78747.592	+90541.663
L94	+80037.475	+89744.153	R65A	+81239.262	+89151.959	R90	+78737.385	+90544.560
L95	+79815.716	+89868.635	R66	+81187.637	+89180.980	R91	+78687.166	+90371.088
L96	+79813.100	+89870.103	R67	+81129.201	+89218.993	R92	+78534.240	+90654.399
L97	+79791.016	+89882.504	R68	+81098.593	+89235.969	R93	+78415.166	+90719.481
L98	+79788.401	+89883.973	R69	+81070.989	+89247.930	R93B	+78365.156	+90745.604
L99	+79293.584	+90161.938	R70	+80893.021	+89339.486			
L100	+79290.967	+90163.405	R71	+80605.775	+89503.025	2120	+81207.369	+89141.356
L101	+79262.621	+90179.267	R72	+80381.536	+89630.539	2137	+81194.350	+89148.667

02040000

Looking for out of print issues of Government and Provincial Gazettes

We can provide photocopies

Contact

The National Library of South Africa,
Pretoria Campus
PO Box 397
0001 PRETORIA

Physical address

C/o Andries and Vermeulen Streets
Entrance in Andries Street

Contact details

Tel: (012) 321-8931

Fax: (012) 325-5984

E-mail: infodesk@nlsa.ac.za

