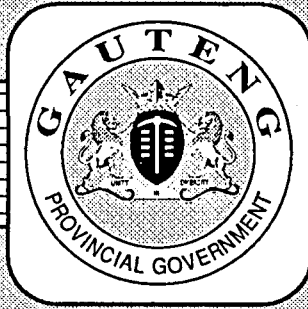


**THE PROVINCE OF
GAUTENG**



**DIE PROVINSIE
GAUTENG**

**Provincial Gazette Extraordinary
Buitengewone Provinsiale Koerant**

Vol. 12

PRETORIA, 13 OCTOBER 2006
OKTOBER

No. 378

We all have the power to prevent AIDS

AIDS
affects
us all



A
new
struggle

**AIDS
HELPLINE**

0800 012 322

DEPARTMENT OF HEALTH

Prevention is the cure



9771682452005



06378

CONTENTS • INHOUD

No.	Page No.	Gazette No.
GENERAL NOTICE		
4255 Gauteng Transport Infrastructure Act (8/2001): Proclamation of provincial railway line: Between Pretoria, Johannesburg and the Johannesburg International Airport.....	3	378

NOTICE TO:

SUBSCRIBERS

OF

GOVERNMENT GAZETTES

Subscribers who have previously arranged to collect their weekly publications of *Government Gazettes* from the Government Printing Works in the Masada Building, are hereby requested to collect their publications from the Old Government Printing Works Building at the Security Officer's Bay at the Proes Street entrance, with effect from the 16th of October 2006.

We look forward to your ongoing support

Contact Person: **Montjane M. Z. (Mr)**

Mobile Phone: 083-640 6121.

Telephone: (012) 334-4653.

GENERAL NOTICE

NOTICE 4255 OF 2006

PROCLAMATION OF A PROVINCIAL RAILWAY LINE IN CONNECTION WITH THE GAUTRAIN RAPID RAIL LINK PROJECT BETWEEN PRETORIA, JOHANNESBURG AND THE JOHANNESBURG INTERNATIONAL AIRPORT

In terms of section 11(1) (b) of the Gauteng Transport Infrastructure Act, 2001 (Act No. 8 of 2001) the MEC hereby proclaims that a provincial railway line with varying widths exists over Holdings 195, 197, 199 and a portion of North Street in Lyttelton Agricultural Holdings Extension 1, the Remainder of Portion 52, Portion 41 of the farm Zwartkop 356-JR, Portions 48 and 67, the Remains of Portions 2, 7 and 96 and Portion 34 of the farm Groenkloof 358-JR as indicated on the accompanying sketch plans.

In terms of section 23(6) of the aforementioned Act, it is hereby declared that boundary beacons, demarcating the width of the portion of the railway line in question, have been placed on the land and that plan GRP 03/38/33Exp – 36Exp indicating the land encroached upon by the said road adjustment is available for inspection by any interested person in the Plan Room of the Department of Public Transport, Roads and Works, First Floor, South Tower, Sage Life Building, 41 Simmonds Street, Johannesburg.

Reference : 2/1/6/1 (2/1/7/1-Gautrain)

MEC Resolution010..... of ...2 October... 2006

KENNISGEWING 4255 VAN 2006

PROKLAMASIE VAN 'n PROVINSIALE SPOORLYN IN VERBAND MET DIE GAUTRAIN SNELSPoorVERBINDING-PROJEK TUSSEN PRETORIA, JOHANNESBURG EN DIE JOHANNESBURG INTERNASIONALE LUGHAWA

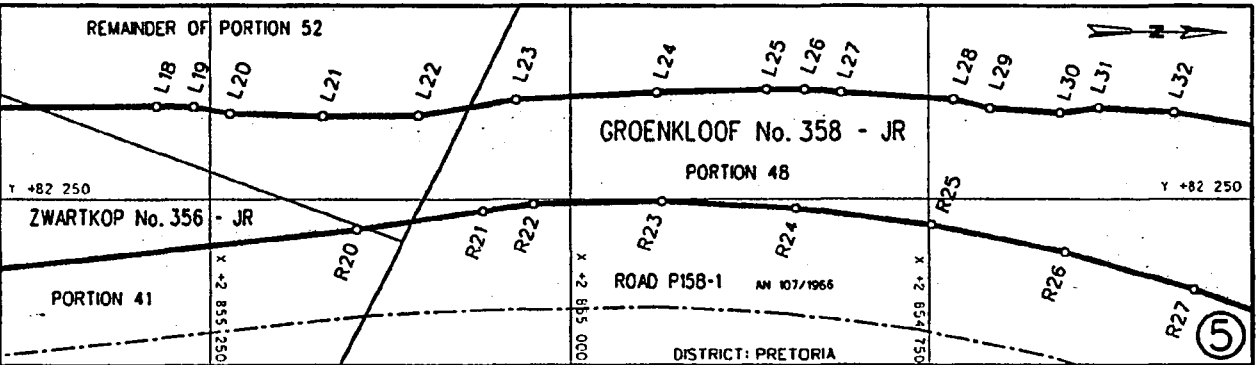
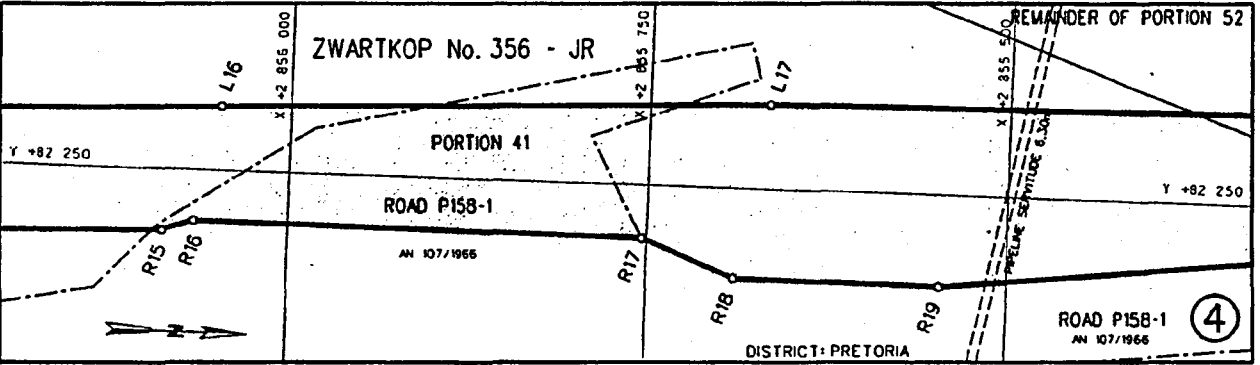
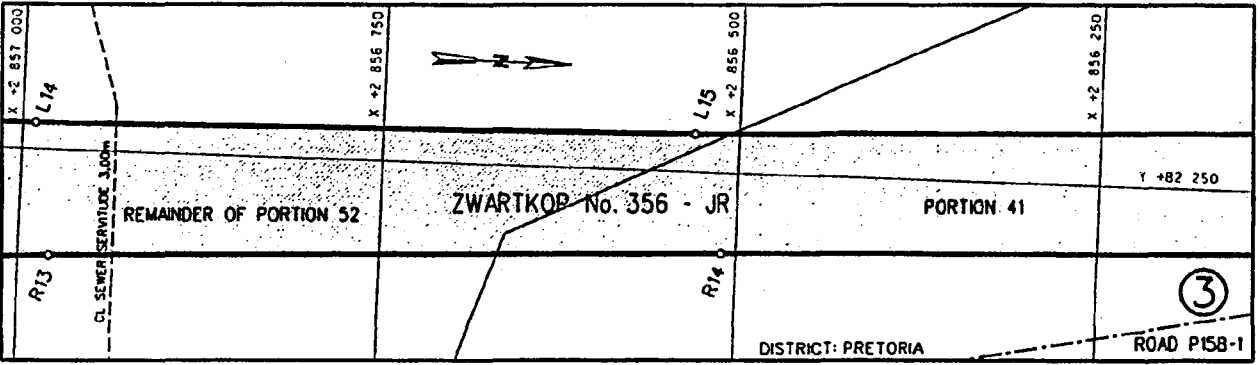
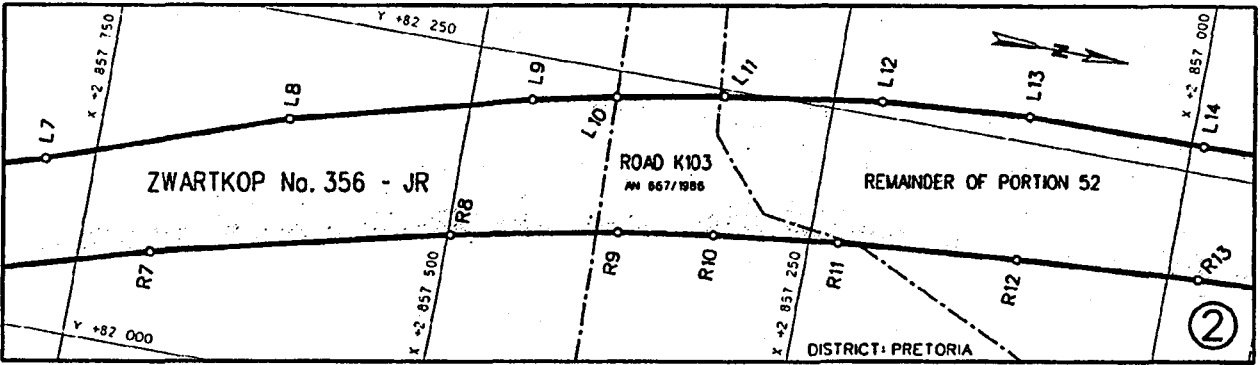
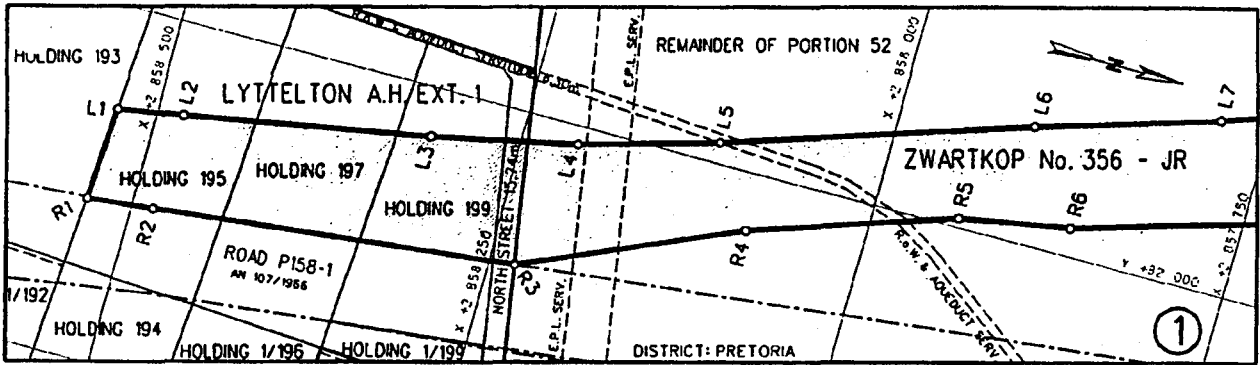
Kragtens artikel 11(1) (b) van die Gauteng Transport Infrastructure Act, 2001 (Act No. 8 of 2001) proklameer die LUR hiermee Dat 'n spoorlyn met wisselende breedtes bestaan oor Hoewes 195, 197, 199 en 'n gedeelte van Northstraat in Lyttelton Landbouhoewes Uitbreiding 1, die Restant van Gedeelte 52, Gedeelte 41 van die Plaas Zwartkop 356-JR, Gedeeltes 48 en 67, die Restante van Gedeeltes 2, 7 en 96 en Gedeelte 34 van die plaas Groenkloof 358-JR soos op die bygaande sketsplanne aangetoon.

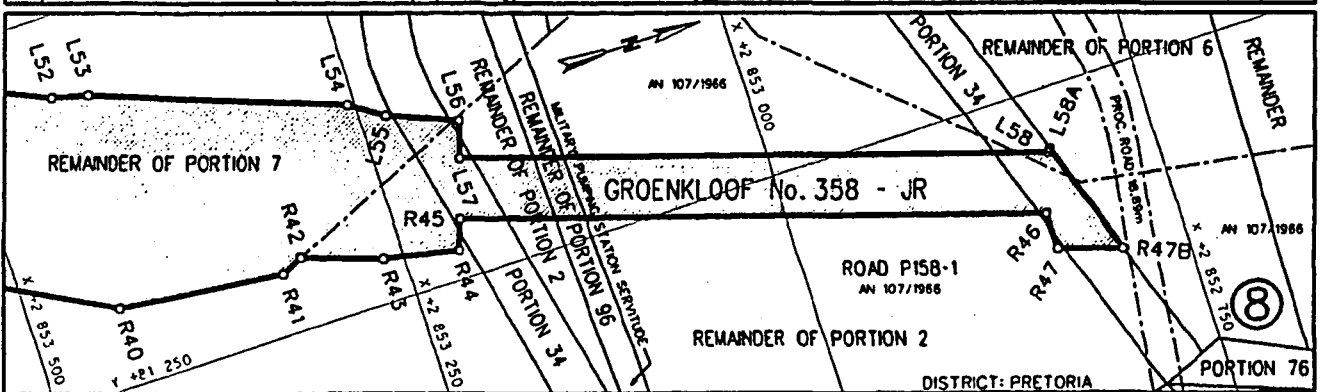
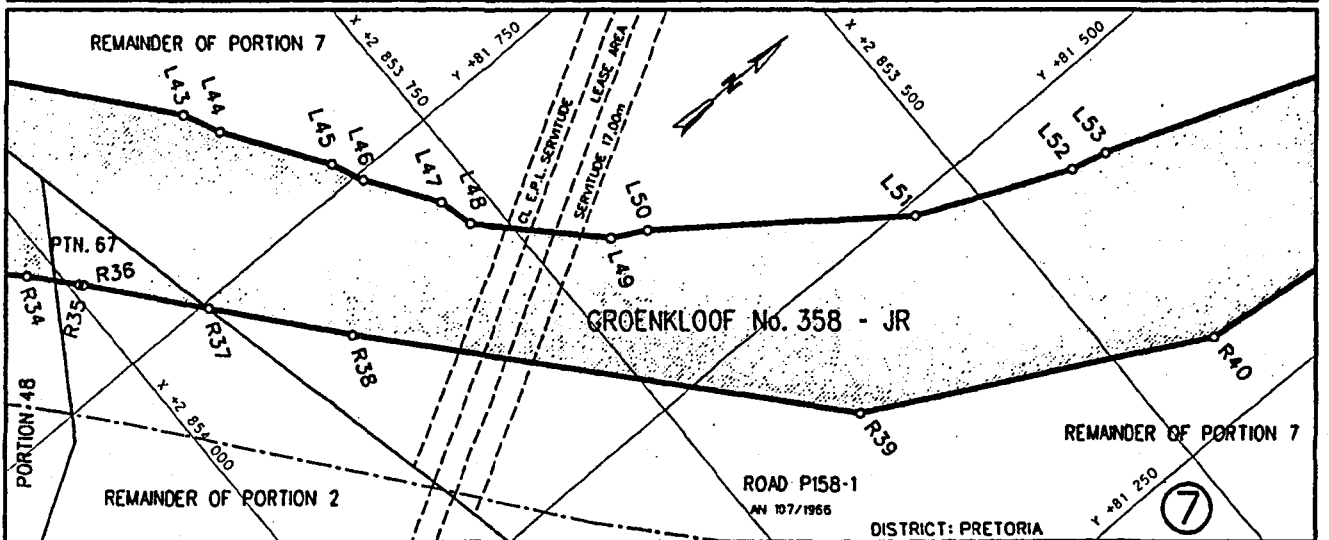
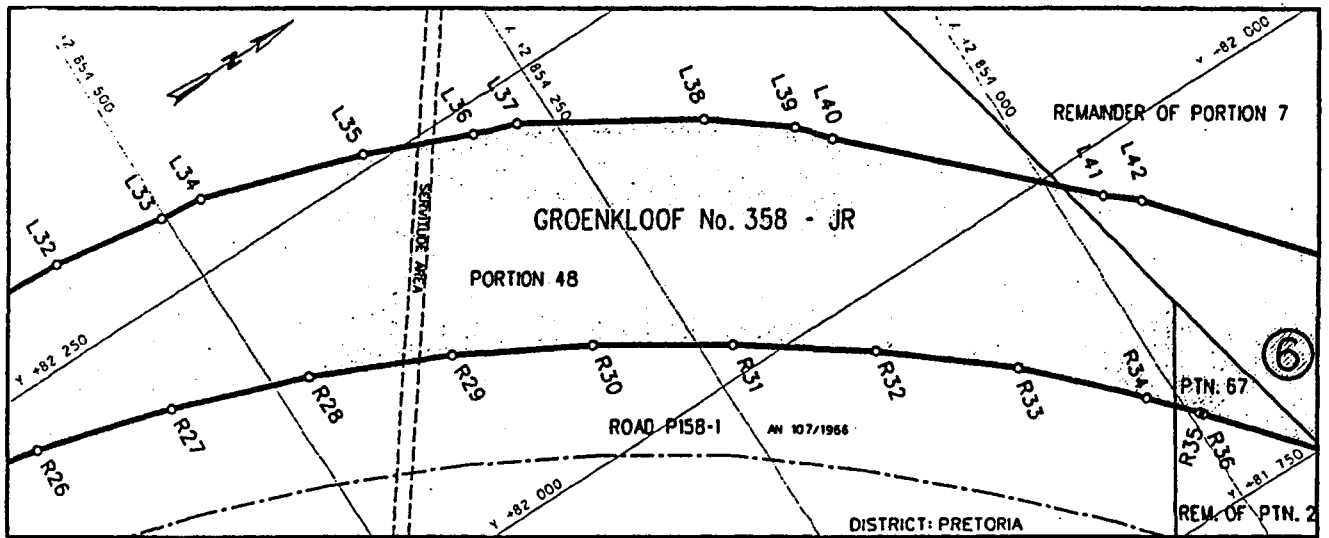
Ingevolge artikel 23(6) van voormelde Wet word hiermee verklaar dat grensbakens wat gemelde spoorlyn aandui op die grond geplaas is en dat plan GRP 03/38/33Exp – 36Exp wat die grond aantoon wat kragtens die proklamasie van die spoorlyn in beslag geneem is, in die Plankamer van die Departement van Openbare Vervoer, Paaie en Werke, Sage Life Gebou, Eerste vloer, Suidtoring, Simmondsstraat 41, Johannesburg vir enige belanghebbende persoon ter insae beskikbaar is.

Verwysing : 2/1/6/1 (2/1/7/1-Gautrain)

LUR Besluit010..... van ...2 Oktober...2006

02020000





02020000

REFERENCE / VERWYSINGS

GEPROKLAMEER SPOORLYN
PROCLAIMED RAILWAY LINE



DIE FIGUUR : L1 - L58, L58A, R47B, R47 - R1, L1.
THE FIGURE :

VERTEENWOORDIG DIE PROKLAMASIE VAN DIE BETROKKE GEDEELTE VAN DIE SPOORLYN OOR HOEWES 195, 197, 199 EN 'N GEDEELTE VAN NORTHSTRAAT IN LYTTELTON LANDBOUHOEWES UITBREIDING 1, DIE RESTANT VAN GEDEELTE 52 EN GEDEELTE 41 VAN DIE PLAAS ZWARTKOP 356-JR, GEDEELTES 48 EN 67, DIE RESTANTE VAN GEDEELTES 2, 7 EN 96 EN GEDEELTE 34 VAN DIE PLAAS GROENKLOOF 358-JR SOOS BEDOEL BY DIE AFKONDIGING DAARVAN IN DIE PROVINSIALE KOERANT EN IN DETAIL GETOON OP PLANNE GRP 03/38/33Exp-36Exp.

REPRESENTS THE PROCLAMATION OF THE PORTION CONCERNED OF THE RAILWAY LINE OVER HOLDINGS 195, 197, 199 AND A PORTION OF NORTH STREET IN LYTTELTON AGRICULTURAL HOLDINGS EXTENSION 1, THE REMAINDER OF PORTION 52 AND PORTION 41 OF THE FARM ZWARTKOP 356-JR, PORTIONS 48 AND 67, THE REMAINDERS OF PORTIONS 2, 7 AND 96 AND PORTION 34 OF THE FARM GROENKLOOF 358-JR AS INTENDED BY THE PUBLICATION THEREOF IN THE PROVINCIAL GAZETTE AND SHOWN IN DETAIL ON PLANS GRP 03/38/33Exp-36Exp.

BUNDEL NR. / FILE NO. 2/1/6/1

KOÖRDINATE LYS/CO-ORDINATE LIST WG 29° KONST./CONST. Y= +/- 0.00 X= +2 800 000.00

L1	+81927.760	+58527.189	L37	+82221.497	+54272.095	R13	+82175.797	+56978.816
L2	+81935.456	+58481.475	L38	+82155.731	+54165.904	R14	+82193.551	+56510.681
L3	+81965.884	+58312.458	L39	+82117.851	+54117.303	R15	+82207.144	+56087.185
L4	+81987.087	+58211.528	L40	+82098.402	+54100.550	R16	+82214.204	+56065.440
L5	+82014.563	+58114.769	L41	+81968.734	+53970.738	R17	+82212.632	+55753.343
L6	+82081.816	+57908.069	L42	+81951.945	+53950.260	R18	+82186.724	+55687.812
L7	+82119.682	+57783.648	L43	+81854.393	+53868.665	R19	+82185.565	+55546.021
L8	+82176.184	+57621.910	L44	+81830.294	+53857.311	R20	+82228.660	+55148.110
L9	+82219.175	+57458.041	L45	+81766.491	+53814.719	R21	+82241.583	+55061.274
L10	+82231.268	+57399.931	L46	+81744.857	+53805.148	R22	+82246.551	+55025.582
L11	+82245.018	+57325.128	L47	+81700.827	+53775.916	R23	+82248.531	+54935.606
L12	+82260.251	+57217.325	L48	+81677.377	+53770.014	R24	+82243.715	+54841.577
L13	+82267.592	+57115.018	L49	+81610.392	+53704.540	R25	+82231.858	+54748.157
L14	+82268.557	+56991.143	L50	+81598.719	+53682.651	R26	+82213.021	+54655.896
L15	+82276.554	+56531.697	L51	+81491.558	+53540.347	R27	+82187.326	+54565.311
L16	+82294.154	+56048.428	L52	+81447.543	+53440.381	R28	+82154.925	+54476.890
L17	+82308.703	+55666.093	L53	+81441.449	+53416.229	R29	+82116.002	+54391.181
L18	+82313.747	+55287.139	L54	+81382.420	+53254.749	R30	+82070.740	+54308.582
L19	+82312.928	+55261.269	L55	+81367.931	+53233.134	R31	+82019.442	+54229.640
L20	+82308.585	+55236.138	L56	+81349.895	+53188.356	R32	+81964.700	+54152.832
L21	+82306.626	+55171.820	L57	+81326.344	+53195.801	R33	+81904.259	+54080.139
L22	+82307.027	+55105.571	L58	+81208.430	+52822.809	R34	+81840.281	+54017.900
L23	+82318.076	+55037.856	L58A	+81210.264	+52820.761	R35	+81813.333	+53994.131
L24	+82323.087	+54939.322				R36	+81811.056	+53992.179
L25	+82325.485	+54862.106	R1	+81862.249	+58531.510	R37	+81745.672	+53937.709
L26	+82325.501	+54835.737	R2	+81867.075	+58485.321	R38	+81670.936	+53876.476
L27	+82323.150	+54810.221	R3	+81894.564	+58231.613	R39	+81414.662	+53651.782
L28	+82318.452	+54732.568	R4	+81960.148	+58080.949	R40	+81301.581	+53438.731
L29	+82312.172	+54707.965	R5	+82006.377	+57941.574	R41	+81289.694	+53328.395
L30	+82309.182	+54659.110	R6	+82019.957	+57865.295	R42	+81296.188	+53313.911
L31	+82312.513	+54632.106	R7	+82068.420	+57700.778	R43	+81278.849	+53262.862
L32	+82309.428	+54578.580	R8	+82116.418	+57498.202	R44	+81268.658	+53214.038
L33	+82296.754	+54502.765	R9	+82138.574	+57382.620	R45	+81288.204	+53207.859
L34	+82293.602	+54474.019	R10	+82148.256	+57315.897	R46	+81170.646	+52835.994
L35	+82259.367	+54367.890	R11	+82158.076	+57229.795	R47	+81146.142	+52835.117
L36	+82231.062	+54300.355	R12	+82167.807	+57106.361	R47B	+81132.620	+52793.085

IMPORTANT NOTICE

GPW wishes to apologise for any confusion created by our previous notice concerning the method of payment (*herewith the corrected version of the notice*):

ACCEPTABLE PAYMENT FOR SERVICES AND GOODS IN GOVERNMENT PRINTING WORKS

**WITH IMMEDIATE EFFECT ALL
PAYMENTS FOR SERVICES RENDERED AND GOODS DIS-
PATCHED SHOULD BE BY MEANS OF CASH, ELECTRONIC
TRANSFER OR BANK GUARANTEED CHEQUES**

**IMPLEMENTATION OF THIS
CIRCULAR IS WITHOUT EXCEPTION**

**S. MBHELE
EXECUTIVE DIRECTOR: MARKETING**

**Tel.: (012) 334-4764
Cell: 082 889 5059**



00002070

