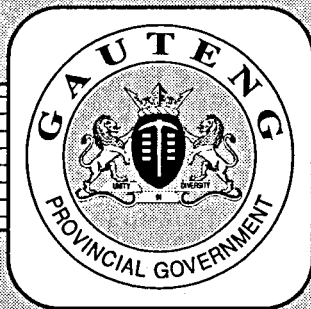


**THE PROVINCE OF
GAUTENG**



**DIE PROVINSIE
GAUTENG**

**Provincial Gazette Extraordinary
Buitengewone Provinsiale Koerant**

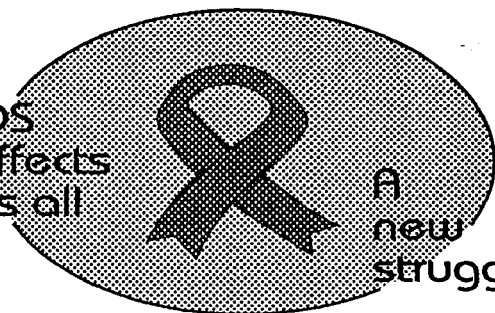
Vol. 12

PRETORIA, 14 NOVEMBER 2006

No. 414

We all have the power to prevent AIDS

AIDS
affects
us all



A
new
struggle

Prevention is the cure

**AIDS
HELPLINE**

0800 012 322

DEPARTMENT OF HEALTH



9771682452005

06414

CONTENTS • INHOUD

<i>No.</i>		<i>Page No.</i>	<i>Gazette No.</i>
GENERAL NOTICES			
4954	Gauteng Transport Infrastructure Act (8/2001): Proclamation of an access road in connection with Provincial Road PWV 16: District Johannesburg.....	3	414
4955	do.: Deviation and increase of the width of a portion of Provincial Road 540: District of Krugersdorp	5	414
4956	do.: Proclamation of the increase in width of a portion of Provincial Road 540: District Krugersdorp.....	8	414
4957	do.: Closing of a portion of Provincial Road 540: District of Randburg.....	10	414
4958	do.: Proclamation of an access road in connection with Provincial Road K29: District of Krugersdorp	12	414
4959	do.: Proclamation of an access road in respect of Provincial Road K5 (P28-1) over Portions 13 and 81 of the farm Brandvlei 261 IQ, District Randfontein	14	414
4960	do.: Proclamation of the closure of a portion of an access road in respect of Provincial Road 374 over Portions 23 and 44 of the farm Boschkop 199 IQ: District Roodepoort.....	16	414

GENERAL NOTICES

NOTICE 4954 OF 2006

PROCLAMATION OF AN ACCESS ROAD IN CONNECTION WITH PROVINCIAL ROAD PWV 16: DISTRICT JOHANNESBURG

In terms of section 13(1) of the Gauteng Transport Infrastructure Act, 2001 (Act No. 8 of 2001) the MEC hereby proclaims that an access road exists on the land as indicated on the accompanying sketch plan.

In terms of section 23 (6) of the aforementioned act, it is hereby declared that boundary beacons demarcating the said access road, have been placed on the land and that plan PRS 80/112/4V indicating the land encroached upon by virtue of the proclamation of the access road, are available for inspection by any interested person in the Plan Room of the Department of Public Transport Roads and Works, Sage Life Building, 41 Simmonds Street, Johannesburg.

Reference: 2/1/1/2/3/1-PWV16 (1)
MEC Resolution 009 dated 17 June 2005

KENNISGEWING 4954 VAN 2006

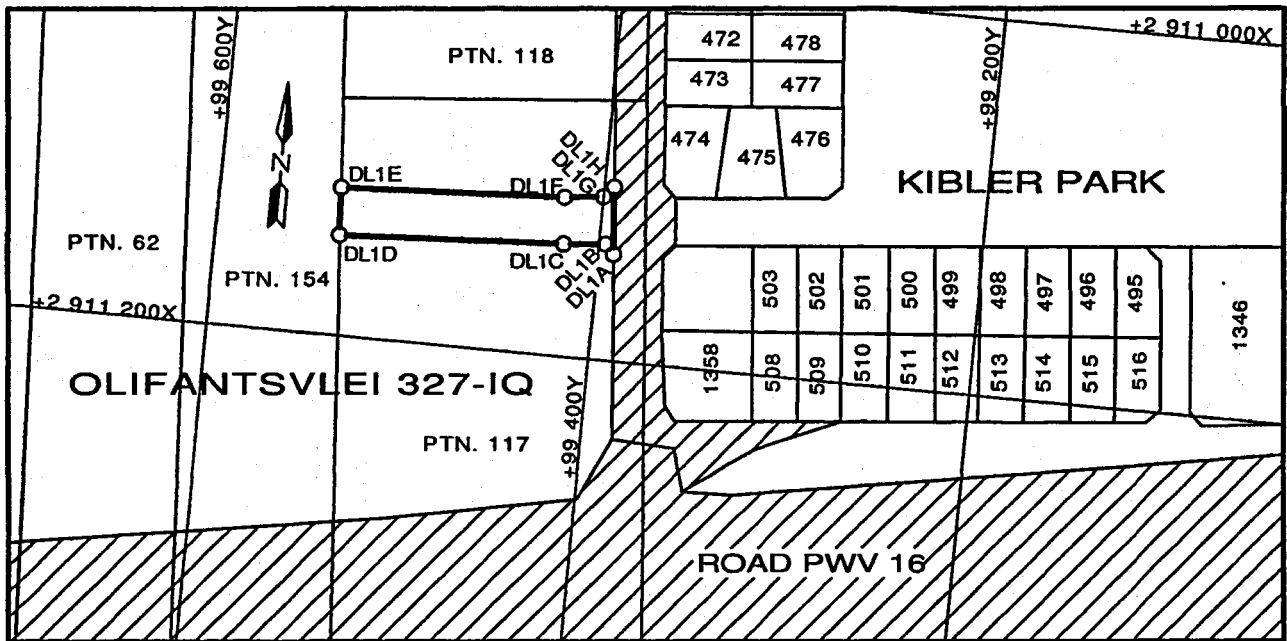
PROKLAMASIE VAN 'N TOEGANGSPAD IN VERBAND MET PROVINSIALE PAD PWV 16: DISTRIK JOHANNESBURG

Kragtens artikel 13(1) van die Gauteng Transport Infrastructure Act, 2001 (Act 8 of 2001) proklameer die LUR hiermee dat 'n toegangspad op die grond bestaan soos op die bygaande sketsplan aangetoon.

Ingevolge artikel 23 (6) van voormelde wet word hiermee verklaar dat grensbakens wat gemelde toegangspad aandui op die grond geplaas is en dat plan PRS 80/112/4V wat die grond aantoon wat deur die proklamasie van die toegangspad in beslag geneem is, in die Plankamer van die Departement van Openbare Vervoer, Paaie en Werke, Sage Life Gebou, Simmondstraat 41, Johannesburg deur enige belanghebbende persoon ter insae beskikbaar is.

Verwysing: 2/1/1/2/3/1-PWV 16(1)

LUR Besluit 009 gedateer 17 Junie 2005



VERWYSING / REFERENCE

PAD GEPROKLAAMEER
ROAD PROCLAIMED



BESTAANDE PAD
EXISTING ROAD



DIE FIGURE DL1A-DL1H, DL1A
VERTEENWOORDIG DIE PROKLAMASIE VAN 'N TOEGANGSPAD IN VERBAND MET
PROVINSIALE PAD PWV 16 OOR 'N GEDEELTE VAN GEDEELTE 117 VAN DIE
PLAAS OLIFANTSVLEI 327-IQ SOOS BEDOEL BY AFKONDIGING DAARVAN
IN DIE PROVINSIALE KOERANT EN IN DETAIL GETOON OP PLAN
PRS80/112/4V

THE FIGURE DL1A-DL1H, DL1A
REPRESENTS THE PROCLAMATION OF AN ACCESS ROAD IN CONNECTION
WITH PROVINCIAL ROAD PWV 16 OVER A PORTION OF PORTION 117 OF
THE FARM OLIFANTSVLEI 327-IQ AS INTENDED BY PUBLICATION THEREOF
IN THE PROVINCIAL GAZETTE AND SHOWN IN DETAIL ON
PLAN PRS80/112/4V

BUNDEL NR. / FILE NO. 2/1/1/2/3/1-PWV16(1)

KOÖRDINATE LYS / CO-ORDINATE LIST LO 29^e KONST. / CONST. Y = ± 0.000 X = +2 900 000.000

DL1A	+99 395.371	+11 143.106	DL1D	+99 537.513	+11 145.286	DL1G	+99 404.236	+11 112.433
DL1B	+99 402.170	+11 137.348	DL1E	+99 539.237	+11 120.321	DL1H	+99 398.478	+11 105.634
DL1C	+99 422.830	+11 139.061	DL1F	+99 424.897	+11 114.147			

NOTICE 4955 OF 2006**DEVIATION AND INCREASE OF THE WIDTH OF A PORTION OF PROVINCIAL ROAD 540: DISTRICT OF KRUGERSDORP**

In terms of sections 11(1)(d) and (2) of the Gauteng Transport Infrastructure Act, 2001 (Act No. 8 of 2001) the MEC hereby proclaims the deviation of a portion of Provincial Road 540 and the increase in width of portions of the said road to varying widths on the properties as indicated on the accompanying sketch plans, which also indicate the general direction and location of the aforementioned road with appropriate co-ordinates of boundary beacons.

In terms of section 23(6) of the aforementioned act, it is hereby declared that boundary beacons, demarcating the road deviation and increase in the width of portions of the road in question, have been placed on the land and that plans GRP 04/07/1 Exp indicating the land encroached upon by the said road adjustments are available for inspection by any interested person in the Plan Room of the Department of Public Transport, Roads and Works, Sage Life Building, 41 Simmonds Street, Johannesburg.

MEC Resolution 015 of 31 July 2004

Reference: 2/1/1/2/3/1-540 (2)

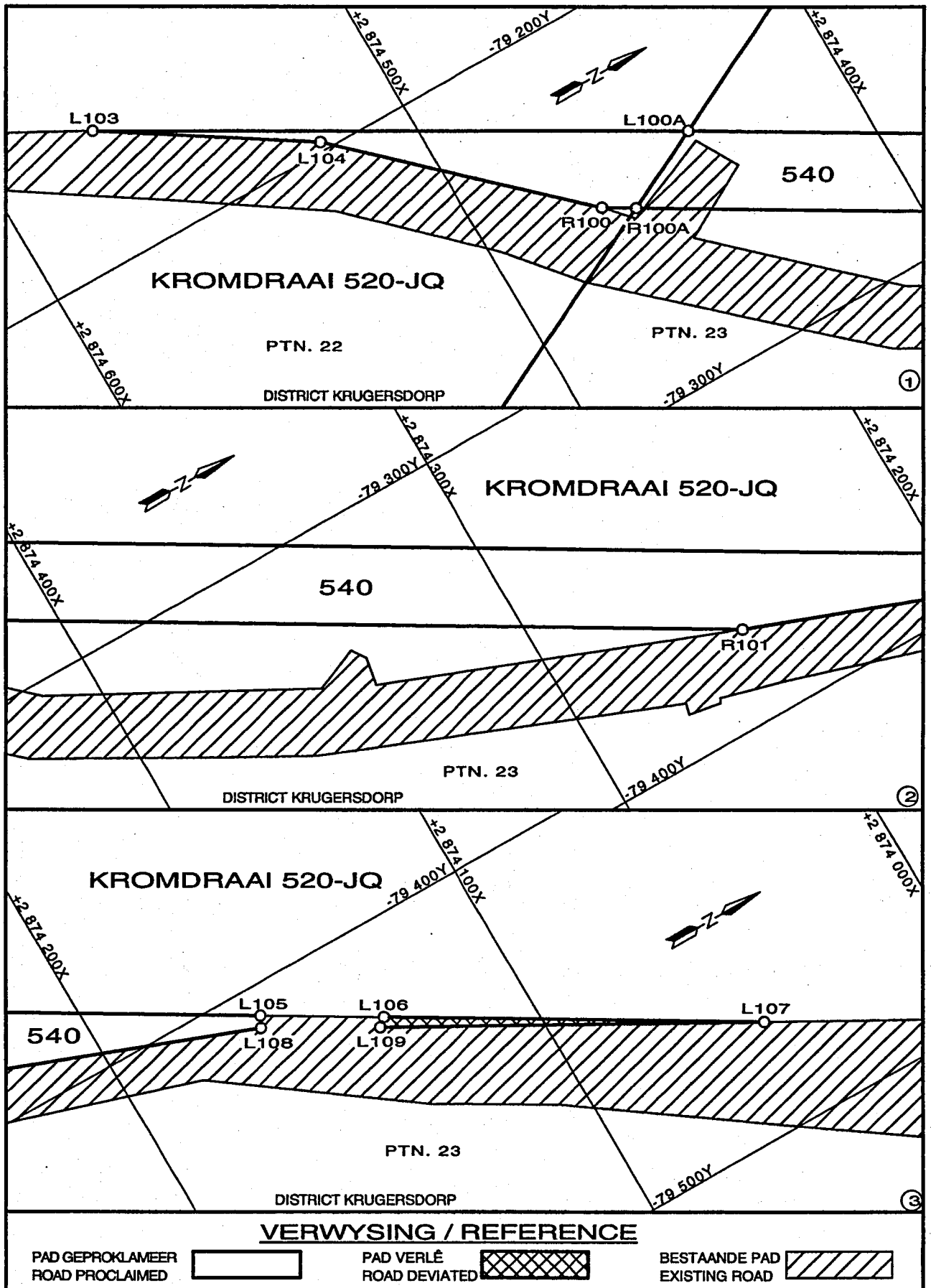
KENNISGEWING 4955 VAN 2006**VERLEGGING EN VERMEERDERING VAN DIE BREEDTE VAN 'N GEDEELTE VAN PROVINSIALE PAD 540: DISTRIK KRUGERSDORP**

Kragtens artikels 11(1)(d) en (2) van die Gauteng Transport Infrastructure Act, 2001 (Act No. 8 of 2001) proklameer die LUR hiermee die verlegging van 'n gedeelte van Provinsiale Pad 540 en die vermeerdering in breedte van gedeeltes van gemelde pad na wisselende breedtes op die eiendomme soos op die bygaande sketsplanne aangetoon, wat ook die algemene rigting en ligging van voormelde pad met toepaslike koördinate van grensbakens aandui.

Ingevolge artikel 23(6) van voormelde wet word hiermee verklaar dat grensbakens wat gemelde padverlegging en vermeerdering van die breedte van gedeeltes van die pad aandui, op die grond geplaas is en dat planne GRP 04/07/1Exp wat die grond aandui wat deur die gemelde padreëlings in beslag geneem is, in die Plankamer van die Departement van Openbare Vervoer, Paaie en Werke, Sage Life Gebou, Simmonds Straat 41, Johannesburg vir enige belanghebbende persoon ter insae beskikbaar is.

LUR Besluit 015 van 31 Julie 2004

Verwysing: 2/1/1/2/3/1-540 (2)



DIE FIGURE L103, L100A, L105, L108, R101, R100A, R100, L104, L103 & L106, L107, L109, L106
 VERTEENWOORDIG DIE VERLEGGING EN VERBREDING VAN DIE BETROKKE GEDEELTES VAN PROVINSIALE PAD 540 OOR DIE GEDEELTES 22 & 23 VAN DIE PLAAS KROMDRAAI 520-JQ SOOS BEDOEL BY AFKONDIGING DAARVAN IN DIE PROVINSIALE KOERANT EN IN DETAIL GETOON OP PLAN GRP04/07/1Exp

THE FIGURES L103, L100A, L105, L108, R101, R100A, R100, L104, L103 & L106, L107, L109, L106
 REPRESENT THE DEVIATION AND WIDENING OF THE PORTIONS CONCERNED OF PROVINCIAL ROAD 540 OVER THE PORTIONS 22 & 23 OF THE FARM KROMDRAAI 520-JQ AS INTENDED BY PUBLICATION THEREOF IN THE PROVINCIAL GAZETTE AND SHOWN IN DETAIL ON PLAN GRP04/07/1Exp

BUNDEL NR. / FILE NO. 2/1/1/2/3/1-540(2)

KOÖRDINATE LYS / CO-ORDINATE LIST WG 27^o KONST. / CONST. Y = ± 0.000 X = +2 800 000.000

L100A -79 241.321 +74 441.198	L106 -79 423.307 +74 134.233	R100 -79 247.585 +74 469.849
L103 -79 166.640 +74 570.789	L107 -79 472.340 +74 051.605	R100A -79 252.001 +74 462.401
L104 -79 197.722 +74 522.637	L108 -79 410.265 +74 162.409	R101 -79 376.519 +74 252.371
L105 -79 407.472 +74 160.943	L109 -79 425.095 +74 135.376	

NOTICE 4956 OF 2006**PROCLAMATION OF THE INCREASE IN WIDTH OF A PORTION OF PROVINCIAL ROAD 540: DISTRICT KRUGERSDORP**

In terms of section 11(2) of the Gauteng Transport Infrastructure Act, 2001 (Act No. 8 of 2001) the MEC for Public Transport, Roads and Works hereby increases the width of a portion of Provincial Road 540, District Krugersdorp over the Remainder of Portion 1 of the farm Tweefontein 523 JQ and the Remainder of Portion 4 of the farm Rietfontein 522 JQ, as indicated on the accompanying sketch plan.

Boundary beacons, demarcating the aforementioned road have been placed on the land concerned and plan GRP 04/07/2Exp indicating the land encroached upon by the road, is available for inspection by any interested person during office hours at the office of the Department of Public Transport, Roads and Works, Sage Life Building, 41 Simmonds Street, Johannesburg.

Executive Council Resolution: 015 of 31 July 2004

Reference: 2/1/1/2/3/1-540 (2)

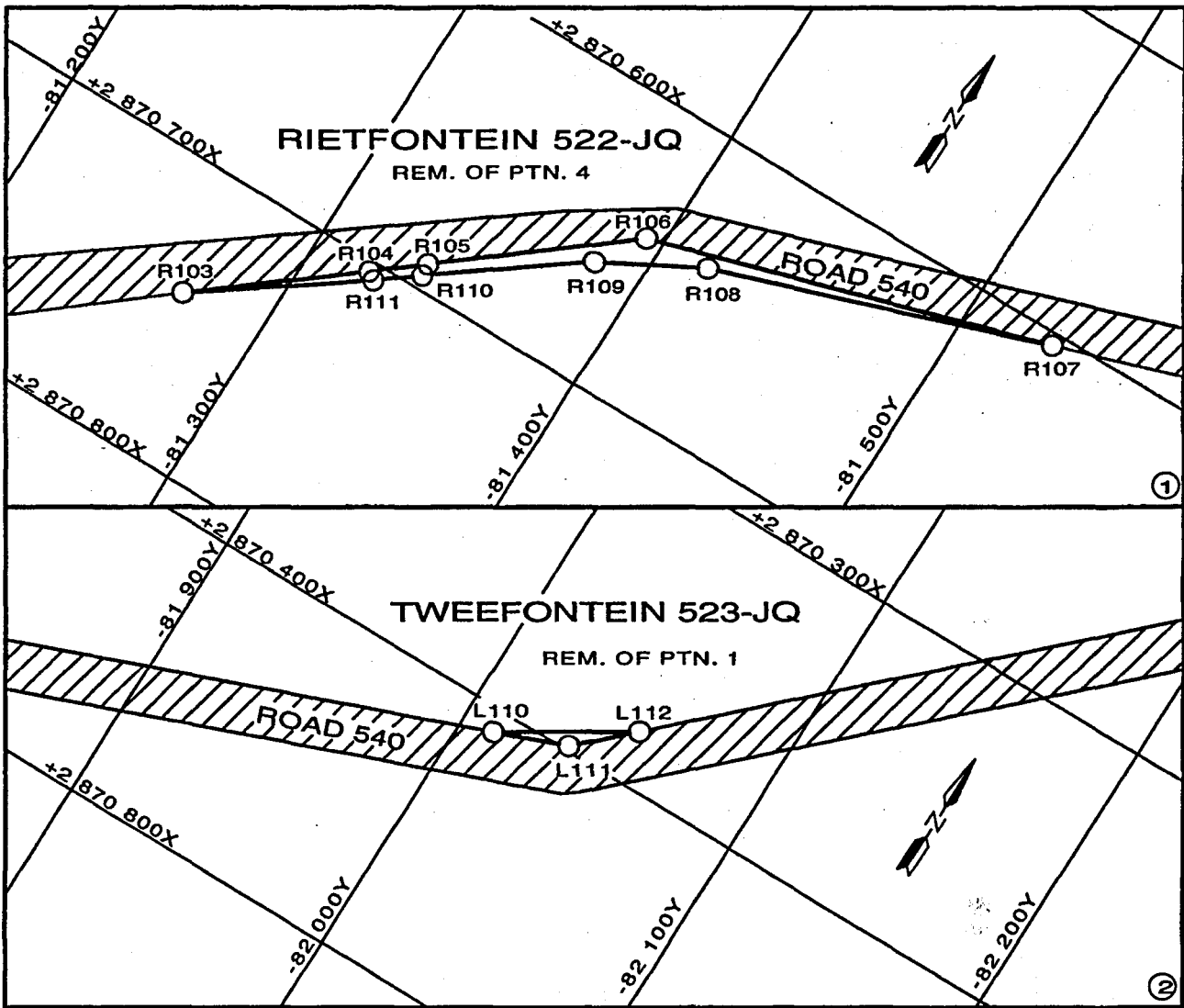
KENNISGEWING 4956 VAN 2006**PROKLAMASIE VAN DIE VERBREIDING VAN 'N GEDEELTE VAN PROVINSIALE PAD 540 DISTRIK KRUGERSDORP**

Ingevolge artikel 11(2) van die Gauteng Transport Infrastructure Act, 2001 (Act nr. 8 of 2001) proklameer die LUR vir Openbare Vervoer, Paaie en Werke hiermee die verbreding van 'n gedeelte van Provinsiale Pad 540, Distrik Krugersdorp oor die Restant van Gedeelte 1 van die plaas Tweefontein 523 JQ en die Restant van Gedeelte 4 van die plaas Rietfontein 522 JQ, soos op die bygaande sketsplan aangetoon.

Grensbakens wat voormelde padverbreding afbaken, is op die betrokke grond geplaas en plan GRP 04/07/2Exp wat die grond aandui wat deur die pad in beslag geneem is, is gedurende kantoorure by die kantoor van die Departement van Openbare Vervoer, Paaie en Werke, Sage Life Gebou, Simmondsstraat 41, Johannesburg vir enige belanghebbende persoon ter insae.

Uitvoerende Raadsbesluit: 015 van 31 Julie 2004

Verwysing: 2/1/1/2/3/1-540 (2)



VERWYSING / REFERENCE

PAD GEPROKLAEMEER
ROAD PROCLAIMED



BESTAANDE PAD
EXISTING ROAD



DIE FIGURE R103-R111, R103 & L110, L112, L111, L110
VERTEENWOORDIG DIE PROKLAMASIE VAN DIE VERBREDING VAN 'n
GEDEELTE VAN PROVINSIALE PAD 540 OOR DIE RESTANT VAN
GEDEELTE 1 VAN DIE PLAAS TWEEFONTEIN 523-JQ EN RESTANT
VAN GEDEELTE 4 VAN DIE PLAAS RIETFontein 522-JQ SOOS
BEDOEL BY AFKONDIGING DAARVAN IN DIE PROVINSIALE KOERANT
EN IN DETAIL GETOON OP PLAN GRP04/07/2EXp

THE FIGURES R103-R111, R103 & L110, L112, L111, L110
REPRESENT THE PROCLAMATION OF THE WIDENING OF A PORTION OF
PROVINCIAL ROAD 540 OVER THE REMAINDER OF PORTION 1 OF THE
FARM TWEEFONTEIN 523-JQ AND REMAINDER OF PORTION 4 OF THE
FARM RIETFontein 522-JQ AS INTENDED BY PUBLICATION
THEREOF IN THE PROVINCIAL GAZETTE AND SHOWN IN DETAIL
ON PLAN GRP04/07/2EXp

BUNDEL NR. / FILE NO. 2/1/1/2/3/1-540(2)

KOÖRDINATE LYS / CO-ORDINATE LIST WG 27^e KONST. / CONST. Y = ± 0.000 X = +2 800 000.000

L110	-82011.349	+2870407.611	R104	-81320.635	+2870703.640	R108	-81417.208	+2870642.503
L111	-82035.480	+2870398.280	R105	-81336.190	+2870690.850	R109	-81383.470	+2870660.683
L112	-82052.994	+2870381.695	R106	-81394.160	+2870644.550	R110	-81336.660	+2870695.238
R103	-81270.800	+2870743.123	R107	-81530.154	+2870604.094	R111	-81323.377	+2870705.636

NOTICE 4957 OF 2006**CLOSING OF A PORTION OF PROVINCIAL ROAD 540: DISTRICT OF RANDBURG**

In terms of section 11(1)(d) of the Gauteng Transport Infrastructure Act, 2001 (Act No. 8 of 2001) the MEC hereby closes a portion of Provincial Road 540 over Portions 22 and 23 of the farm Kromdraai 520-JQ on the land as indicated on the accompanying sketch plan.

Plan GRP04/7/1EXp, is available for inspection by any interested person in the Plan Room of the Department of Public Transport, Roads and Works, Sage Life Building, 41 Simmonds Street, Johannesburg.

Reference: 2/1/1/2/3/1-540(2)
MEC Resolution 015 dated 31 July 2004

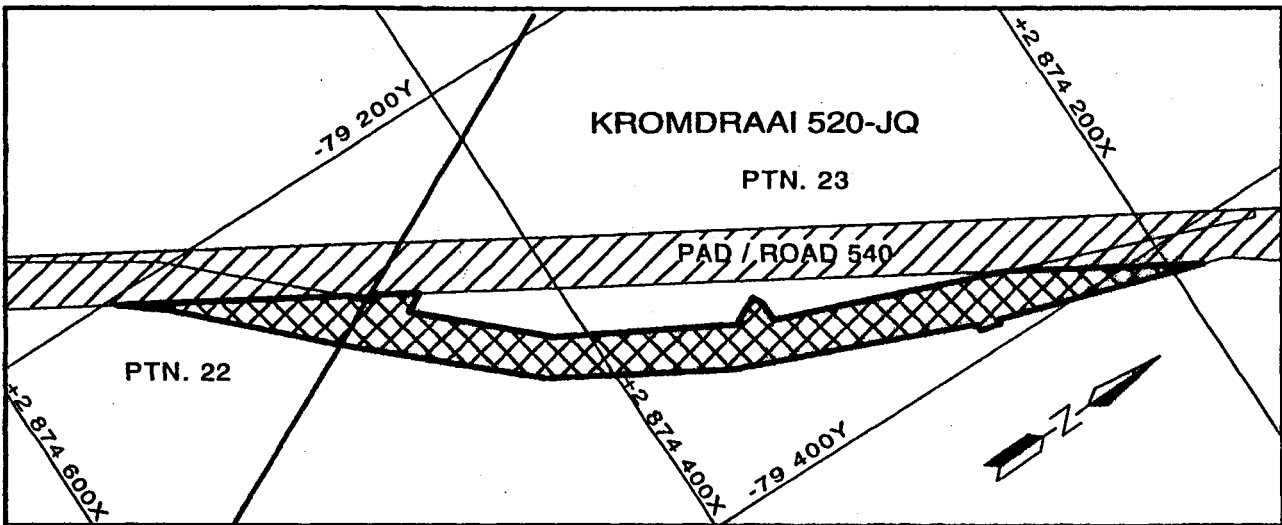
KENNISGEWING 4957 VAN 2006**SLUITING VAN 'N GEDEELTE VAN PROVINSIALE PAD 540: DISTRIK VAN RANDBURG**

Kragtens artikel 11(1)(d) van die Gauteng Transport Infrastructure Act, 2001 (Act No. 8 of 2001) sluit die LUR 'n gedeelte van Provinsiale Pad 540 oor Gedeeltes 22 en 23 van die plaas Kromdraai 520-JQ soos op die bygaande sketsplan aangetoon.

Plan GRP04/7/1 is in die Plankamer van die Departement van Openbare Vervoer, Paaie en Werke, Sage Life Gebou, Simmondsstraat 41, Johannesburg deur enige belanghebbende persoon ter insae beskikbaar is.

Verwysing : 2/1/1/2/3/1-540(2)

LUR Besluit 015 gedateer 31 Julie 2004



VERWYSING / REFERENCE

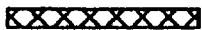
PAD GEDEPROKLAAMEER
ROAD DEPROCLAIMED



BESTAANDE PAD
EXISTING ROAD



DIE FIGUUR



VERTEENWOORDIG DIE SLUITING VAN DIE BETROKKE GEDEELTE VAN PROVINSIALE PAD 540 OOR GEDEELTES 22 & 23 VAN DIE PLAAS KROMDRAAI 520-JQ SOOS BEDOEL BY AFKONDIGING DAARVAN IN DIE PROVINSIALE KOERANT EN IN DETAIL GETOON OP PLAN GRP04/7/1EXp

THE FIGURE



REPRESENTS THE CLOSURE OF THE PORTION CONCERNED OF PROVINCIAL ROAD 540 OVER PORTIONS 22 & 23 OF THE FARM KROMDRAAI 520-JQ AS INTENDED BY PUBLICATION THEREOF IN THE PROVINCIAL GAZETTE AND SHOWN IN DETAIL ON PLAN GRP04/7/1EXp

BUNDEL NR. / FILE NO. 2/1/1/2/3/1-540(2)

NOTICE 4958 OF 2006**PROCLAMATION OF AN ACCESS ROAD IN CONNECTION WITH PROVINCIAL ROAD K29 : DISTRICT OF KRUGERSDORP**

In terms of section 13(1) of the Gauteng Transport Infrastructure Act, 2001 (Act No. 8 of 2001) the MEC proclaims that an access road exists on the land as indicated on the accompanying sketch plan.

In terms of section 23(6) of the aforementioned act, it is hereby declared that boundary beacons demarcating the said access road, have been placed and that plan GRP02/05/1Exp indicating the land encroached upon by virtue of the proclamation of the access road, is available for inspection by any interested person in the Plan Room of the Department of Public Transport, Roads and Works, Sage Life Building, 41 Simmonds Street, Johannesburg.

Reference : 2/1/1/2/3/1P103-1(1) & K29(1)

EC Resolution 011 dated 6 July 2002

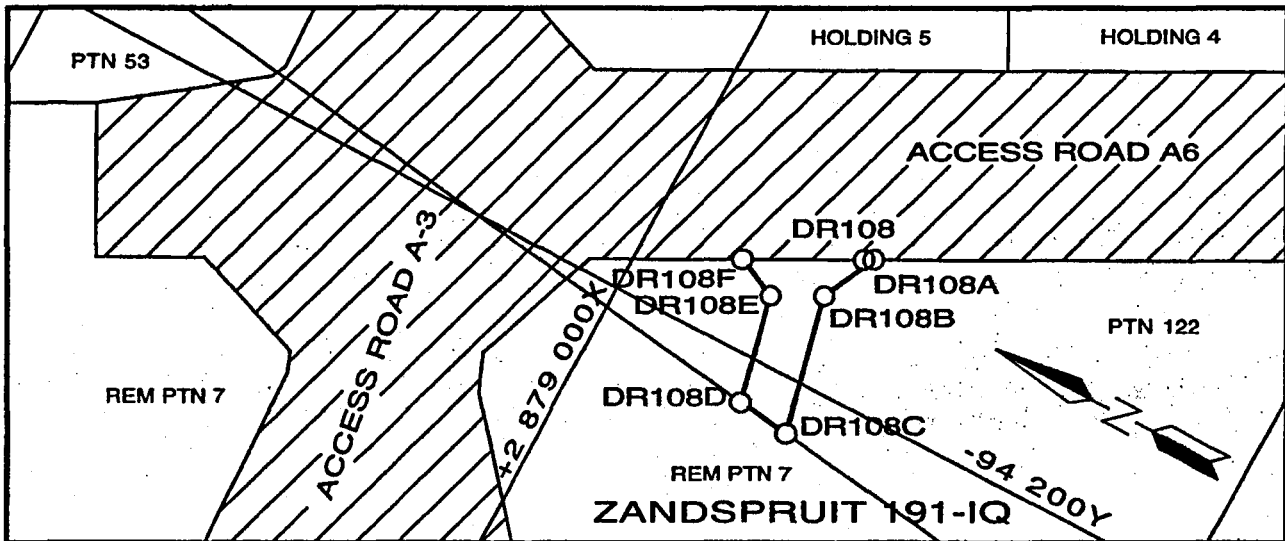
KENNISGEWING 4958 VAN 2006**PROKLAMASIE VAN 'n TOEGANGSPAD IN VERBAND MET PROVINSIALE PAD K29 : DISTRIK KRUGERSDORP**

Kragtens artikel 13(1) van die Gauteng Transport Infrastructure Act, 2001 (Act No. 8 of 2001) proklameer die LUR hiermee dat 'n toegangspad op die grond bestaan soos op die bygaande sketsplan aangetoon.

Ingevolge artikel 23(6) van voormelde wet word hiermee verklaar dat grensbakens wat gemelde toegangspad aandui geplaas is en dat plan GRP02/05/1Exp wat die grond aantoon wat deur die proklamasie van die toegangspad in beslag geneem is, in die Plankamer van die Departement van Openbare Vervoer, Paaie en Werke, Sage Life Gebou, Simmondsstraat 41, Johannesburg deur enige belanghebbende persoon ter insae beskikbaar is.

Verwysing : 2/1/1/2/3/1 P103-1(1) & K29(1)

UR Besluit 011 gedateer 6 Julie 2002



VERWYSING / REFERENCE

PAD GEPROKLAMEER
ROAD PROCLAIMED



BESTAANDE PAD
EXISTING ROAD



DIE FIGUUR DR108, DR108A-DR108F, DR108
VERTEENWOORDIG DIE PROKLAMASIE VAN DIE BETROKKE GEDEELTE VAN 'N
TOEGANGSPAD OOR GEDEELTE 122 VAN DIE PLAAS ZANDSPRUIT 191-IQ
SOOS BEDOEL BY AFKONDIGING DAARVAN IN DIE PROVINSIALE
KOERANT EN IN DETAIL GETOON OP PLAN GRP02/05/1Exp

THE FIGURE DR108, DR108A-DR108F, DR108
REPRESENTS THE PROCLAMATION OF THE PORTION CONCERNED OF AN
ACCESS ROAD OVER PORTION 122 OF THE FARM ZANDSPRUIT 191-IQ
AS INTENDED BY PUBLICATION THEREOF IN THE PROVINCIAL
GAZETTE AND SHOWN IN DETAIL ON PLAN GRP02/05/1Exp

BUNDEL NR. / FILE NO. 2/1/1/2/3/1-K29(1)

KOÖRDINATE LYS / CO-ORDINATE LIST WG 27^o KONST. / CONST. Y = ± 0.000 X = +2 800 000.000

DR108 -94219.743 +79027.517
DR108A -94222.596 +79032.934
DR108B -94213.949 +79028.951

DR108C -94191.901 +79033.950
DR108D -94193.065 +79025.483

DR108E -94210.089 +79021.623
DR108F -94213.145 +79014.988

NOTICE 4959 OF 2006**PROCLAMATION OF AN ACCESS ROAD IN RESPECT OF PROVINCIAL ROAD K5 (P28-1) OVER PORTIONS 13 AND 81 OF THE FARM BRANDVLEI 261 IQ, DISTRICT RANDFONTEIN**

In terms of section 13(1) of the Gauteng Transport Infrastructure Act, 2001 (Act No. 8 of 2001) the MEC for Public Transport, Roads and Works hereby proclaims an access road in respect of Provincial Road K5 (P28-1) over Portions 13 and 81 of the farm Brandvlei 261 IQ, District Randfontein

Boundary beacons, demarcating the aforementioned road have been placed on the land concerned and plan GRP 01/31/1Exp indicating the land encroached upon by the road, is available for inspection by any interested person during office hours at the office of the Department of Public Transport, Roads and Works, Sage Life Building, 41 Simmonds Street, Johannesburg.

Executive Council Resolution: 006 of 27 April 2005

Reference: 2/1/1/2/3/1-P28-1

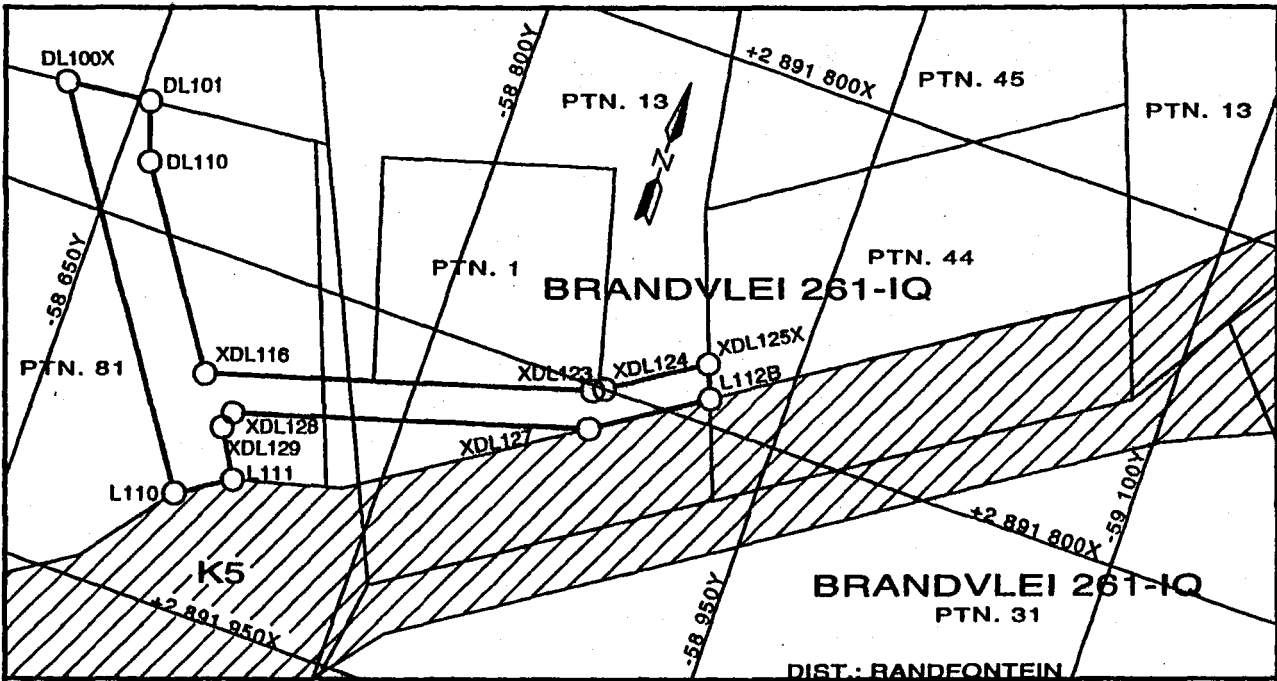
KENNISGEWING 4959 VAN 2006**PROKLAMASIE VAN 'N TOEGANGSPAD TEN OPSIGTE VAN PROVINSIALE PAD K5 (P28-1) OOR GEDEELTES 13 EN 81 VAN DIE PLAAS BRANDVLEI 261 IQ, DISTRIK RANDFONTEIN**

Ingevolge artikel 13(1) van die Gauteng Transport Infrastructure Act, 2001 (Act nr. 8 of 2001) proklameer die LUR vir Openbare Vervoer, Paaie en Werke hiermee 'n toegangspad ten opsigte van Provinsiale Pad K5 (P28-1), Distrik Randfontein oor Gedeeltes 13 en 81 van die plaas Brandvlei 261 IQ.

Grensbakens wat voormelde padverbreding afbaken, is op die betrokke grond geplaas en plan GRP 01/31/1Exp wat die grond aandui wat deur die pad in beslag geneem is, is gedurende kantoorure by die kantoor van die Departement van Openbare Vervoer, Paaie en Werke, Sage Life Gebou, Simmondsstraat 41, Johannesburg vir enige belanghebbende persoon ter insae.

Uitvoerende Raadsbesluit: 006 van 27 April 2005

Verwysing: 2/1/1/2/3/1-P28-1



VERWYSING / REFERENCE

PAD GEPROKLAAMEER
ROAD PROCLAIMED



BESTAANDE PAD
EXISTING ROAD



DIE FIGUUR L110, DL100X, DL101, DL110, XDL116, XDL123, XDL124, XDL125X, L112B, XDL127-XDL129, L111, L110 VERTEENWOORDIG DIE PROKLAMASIE VAN DIE TOEGANGSPAD OOR GEDEELTES 13 & 81 VAN DIE PLAAS BRANDVLEI 261-IQ SOOS BEDOEL BY AFKONDIGING DAARVAN IN DIE PROVINSIALE KOERANT EN IN DETAIL GETOON OP PLAN GRP01/31/1EXp

THE FIGURE L110, DL100X, DL101, DL110, XDL116, XDL123, XDL124, XDL125X, L112B, XDL127-XDL129, L111, L110 REPRESENTS THE PROCLAMATION OF AN ACCESS ROAD OVER PORTIONS 13 & 81 OF THE FARM BRANDVLEI 261-IQ AS INTENDED BY PUBLICATION THEREOF IN THE PROVINCIAL GAZETTE AND SHOWN IN DETAIL ON PLAN GRP01/31/1EXp

BUNDEL NR. / FILE NO. 2/1/1/2/3/1-P 28-1(1)

KOÖRDINATE LYS / CO-ORDINATE LIST WG 27^e KONST. / CONST. Y = ± 0.000 X = +2 800 000.000

L110	-58 720.702	+91 901.781	DL110	-58 685.429	+91 771.249	XDL127	-58 876.026	+91 818.368
L111	-58 741.642	+91 888.104	XDL116	-58 716.895	+91 850.181	XDL128	-58 732.979	+91 861.984
L112B	-58 918.509	+91 790.661	XDL123	-58 873.239	+91 802.491	XDL129	-58 730.292	+91 868.899
DL100X	-58 625.220	+91 755.361	XDL124	-58 875.930	+91 801.234			
DL101	-58 658.413	+91 751.671	XDL125X	-58 913.367	+91 776.817			

NOTICE 4960 OF 2006**PROCLAMATION OF THE CLOSURE OF A PORTION OF AN ACCESS ROAD IN RESPECT OF PROVINCIAL ROAD 374 OVER PORTIONS 23 AND 44 OF THE FARM BOSCHKOP 199 IQ: DISTRICT ROODEPOORT**

In terms of section 11(1)(d) of the Gauteng Transport Infrastructure Act, 2001 (Act No. 8 of 2001) the MEC hereby closes a portion of an access road in respect of Provincial Road 374, over Portions 23 and 44 of the farm Boschkop 199-IQ, as indicated on the accompanying sketch plan.

In terms of section 23 (6) of the aforementioned act, it is hereby declared that boundary beacons demarcating the said road, have been placed on the land and that plans PRS 72/52/6V & 7V indicating the land affected by the closure of a portion of an access road in respect of provincial road 374, are available for inspection by any interested person in the Plan Room of the Department of Public Transport Roads and Works, Sage Life Building, 41 Simmonds Street, Johannesburg.

Reference: 2/1/1/2/3/1-374(1)

MEC Resolution 008 dated 22 July 2005

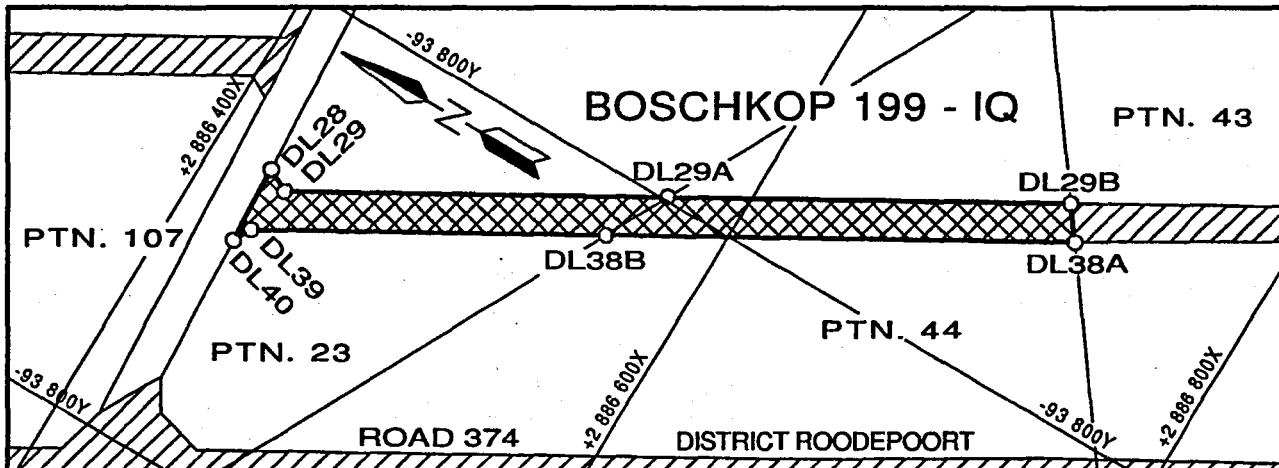
KENNISGEWING 4960 VAN 2006**PROKLAMASIE VIR DIE SLUITING VAN 'N GEDEELTE VAN 'N TOEGANGSPAD TEN OPSIGTE VAN PROVINSIALE PAD 374, OOR GEDEELTES 23 EN 44 VAN DIE PLAAS BOSCHKOP 199 IQ: DISTRIK ROODEPOORT**

Kragtens artikel 11(1)(d) van die Gauteng Transport Infrastructure Act, 2001 (Act 8 of 2001) sluit die LUR hiermee 'n gedeelte van 'n toegangspad ten opsigte van Provinsiale Pad 374 oor gedeeltes 23 en 44 van die plaas Boschkop 199-IQ soos op die bygaande sketsplan aangetoon.

Ingevolge artikel 23 (6) van voormelde wet word hiermee verklaar dat grensbakens wat gemelde sluiting aandui op die grond geplaas is en dat planne PRS 72/52/6V & 7V wat die grond aantoon wat deur die sluiting van 'n gedeelte van 'n toegangspad ten opsigte van Provinsiale Pad 374 geraak word, in die Plankamer van die Departement van Openbare Vervoer, Paaie en Werke, Sage Life Gebou, Simmondstraat 41, Johannesburg deur enige belanghebbende persoon ter insae beskikbaar is.

Verwysing: 2/1/1/2/3/1-374(1)

LUR Besluit 008 gedateer 22 Julie 2005



VERWYSING / REFERENCE

PAD GESLUIT
ROAD CLOSED



BESTAANDE PAD
EXISTING ROAD



DIE FIGUUR : DL28DL29, DL29A,DL29B, DL38A, DL38B, DL39, DL40, DL28
 VERTEENWOORDIG DIE SLUITING VAN DIE BETROKKE GEDEELTE VAN
 PROVINSIALE PAD 374 OOR GEDEELTES 23 & 44 VAN DIE PLAAS
 BOSCHKOP 199-IQ SOOS BEDOEL BY AFKONDIGING DAARVAN IN DIE
 PROVINSIALE KOERANT EN IN DETAIL GETOON OP PLANNE PRS 72/52/6V&7V

THE FIGURE : DL28DL29, DL29A,DL29B, DL38A, DL38B, DL39, DL40, DL28
 REPRESENTS THE CLOSURE OF THE PORTION CONCERNED OF
 PROVINCIAL ROAD 374 OVER PORTIONS 23 & 44 OF THE FARM
 BOSCHKOP 199-IQ AS INTENDED BY PUBLICATION THEREOF IN THE
 PROVINCIAL GAZETTE AND SHOWN IN DETAIL ON PLANS PRS 72/52/6V&7V

BUNDEL NR. / FILE NO. 2/1/1/2/3/1-374(1)

KOÖRDINATE LYS / CO-ORDINATE LIST L_o 27^e KONST. / CONST. Y = ± 0.000 X = +2 800 000.000

DL28	-93 728.68	+86 425.29	DL29B	-93 882.77	+86 712.34	DL39	-93 703.34	+86 431.25
DL29	-93 723.67	+86 434.55	DL38A	-93 869.81	+86 721.91	DL40	-93 695.86	+86 427.20
DL29A	-93 801.52	+86 570.47	DL38B	-93 775.25	+86 556.80			

IMPORTANT NOTICE

The
Gauteng Provincial Gazette Function
will be transferred to the
Government Printer in Pretoria
as from 2nd January 2002

NEW PARTICULARS ARE AS FOLLOWS:

Physical address:

Government Printing Works
149 Bosman Street
Pretoria

Postal address:

Private Bag X85
Pretoria
0001

New contact persons: Awie van Zyl Tel.: (012) 334-4523
Mrs H. Wolmarans Tel.: (012) 334-4591

Fax number: (012) 323-8805

E-mail address: awvanzyl@print.pwv.gov.za

Contact persons for subscribers:

Mrs S. M. Milanzi Tel.: (012) 334-4734
Mrs J. Wehmeyer Tel.: (012) 334-4753
Fax.: (012) 323-9574

This phase-in period is to commence from **November 2001** (suggest date of advert) and notice comes into operation as from **2 January 2002**.

Subscribers and all other stakeholders are advised to send their advertisements directly to the **Government Printing Works**, two weeks before the 2nd January 2002.

*In future, adverts have to be paid in advance
before being published in the Gazette.*

HENNIE MALAN

Director: Financial Management
Office of the Premier (Gauteng)

NOTICE TO:

SUBSCRIBERS

OF

GOVERNMENT GAZETTES

Subscribers who have previously arranged to collect their weekly publications of *Government Gazettes* from the Government Printing Works in the Masada Building, are hereby requested to collect their publications from the Old Government Printing Works Building at the Security Officer's Bay at the Proes Street entrance, with effect from the 16th of October 2006.

We look forward to your ongoing support

Contact Person: **Montjane M. Z. (Mr)**

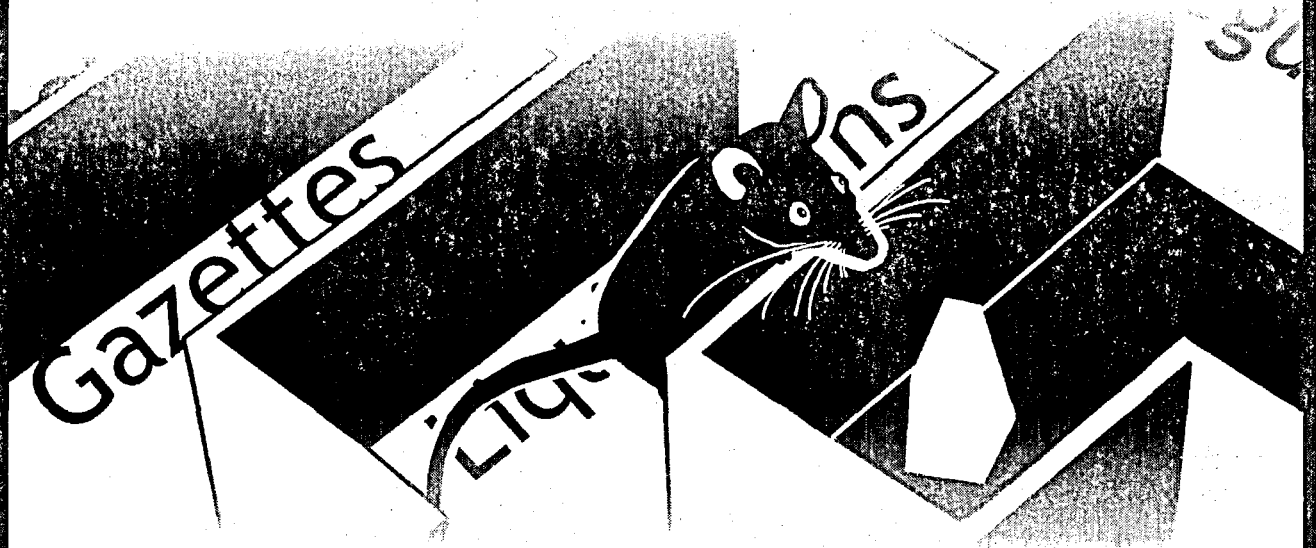
Mobile Phone: 083-640 6121.

Telephone: (012) 334-4653.



Sabinet Online Ltd has established itself, for more than a decade, as a leader in facilitating electronic access to gazetted information.

Are you looking for information published in Gazettes such as changes to Acts, Regulations of Acts, Notices, Liquidation & distribution accounts on deceased estates?



Search no more.

Sabinet Online's SA Gazettes provides immediate access to full-text databases of Government and Provincial Gazettes, the Government Gazette Index and Parliamentary Bills. Updated daily.

The SA Gazettes is considered in all industry sectors as the most comprehensive collection of searchable gazette data on the Internet. With SA Gazettes you have access to the electronic full-text of the Government Gazette and all Provincial Gazettes.

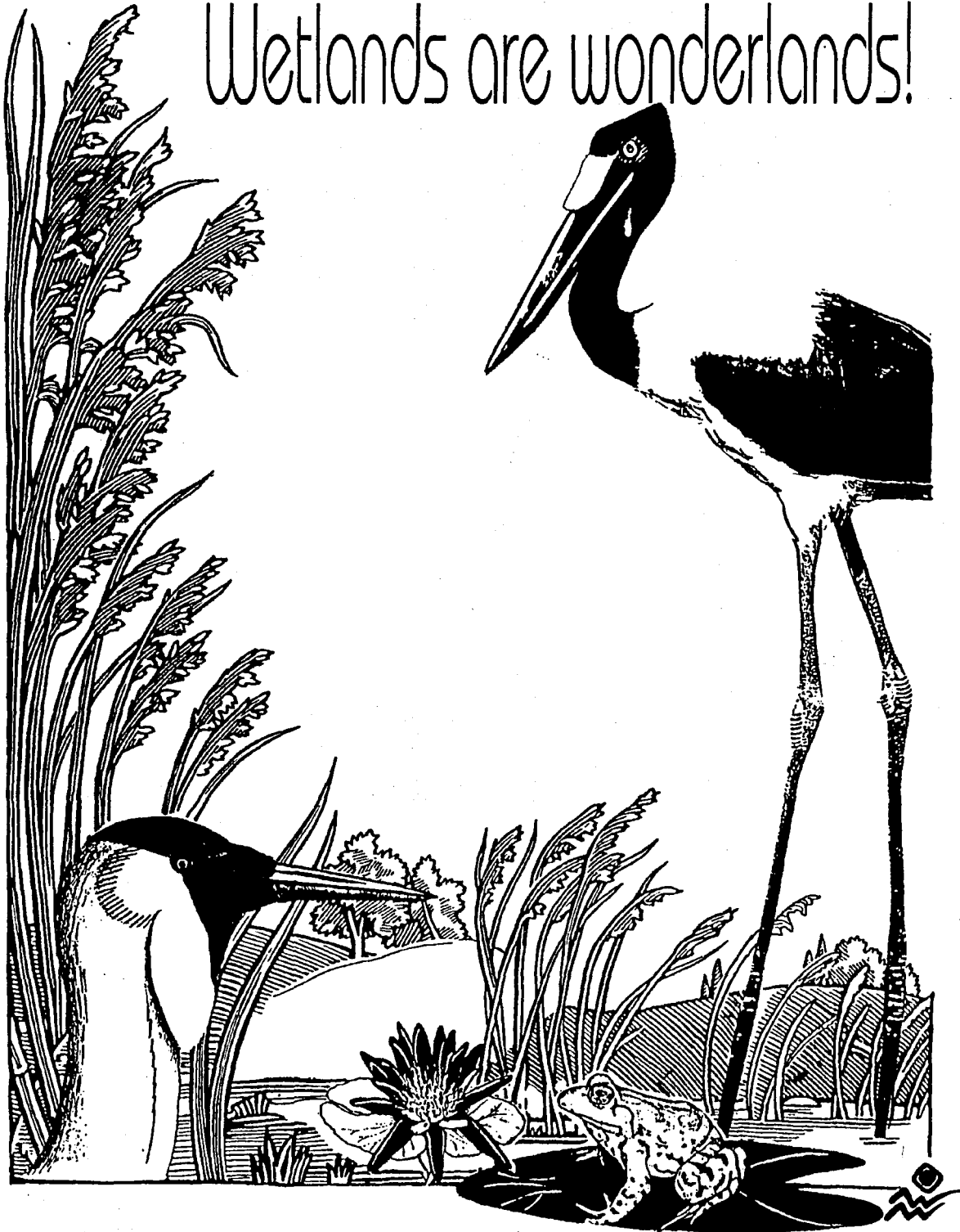
- The Government Gazette - from January 1994
- All Provincial Gazettes - from September 1995
- Indexes pertaining to the past week's Government and all Provincial Gazettes.
- Parliamentary Bills - from January 1999

We facilitate access to information
www.sabinet.co.za

Tel: +27 12 643 9500; Fax: +27 12 663 3543; E-mail: info@sabinet.co.za

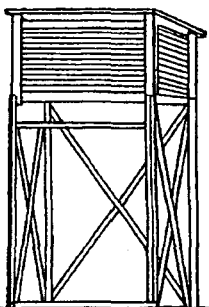
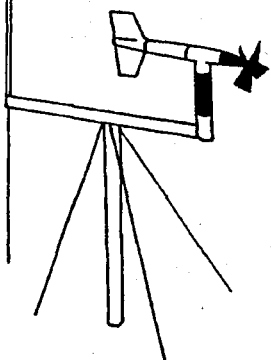
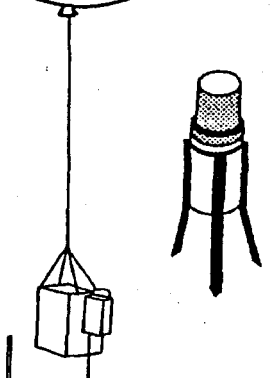


Wetlands are wonderlands!

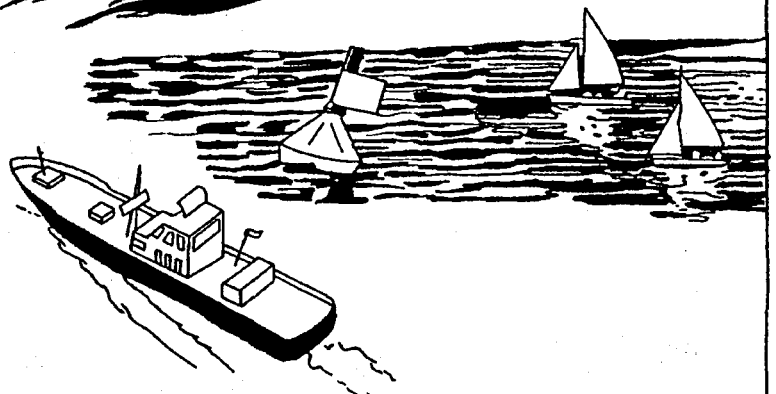
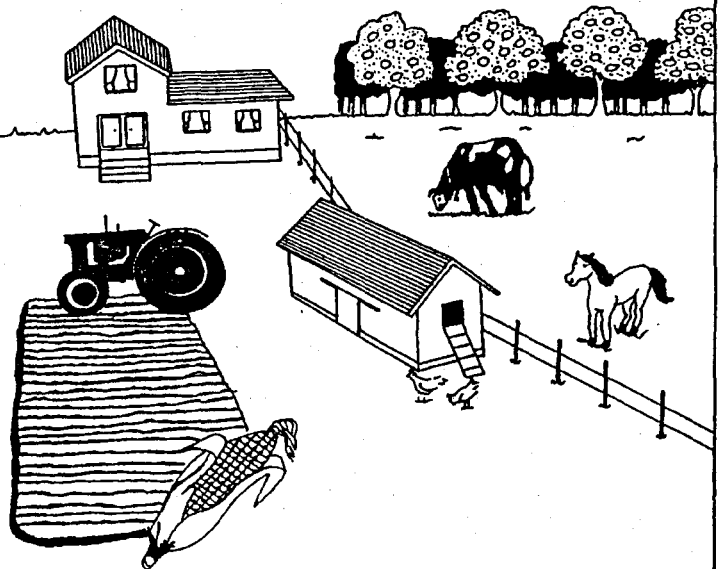
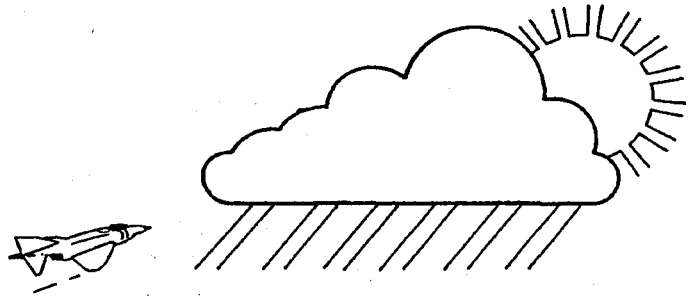


Department of Environmental Affairs and Tourism

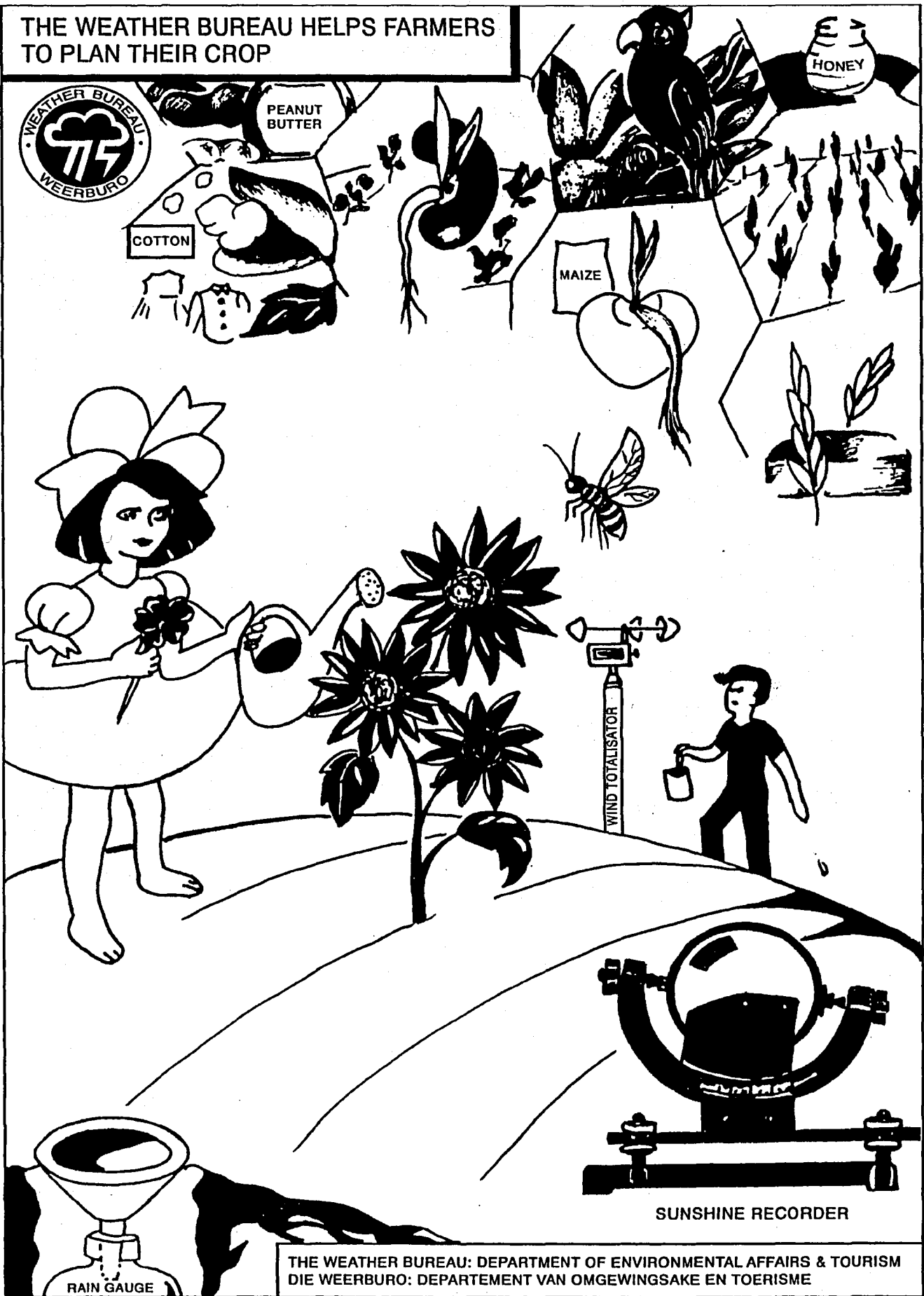
SA WEATHER BUREAU SA WEERBURO



**W
E
A
T
H
E
R
·
S
E
R
V
I
C
E
S
·
W
E
E
R
D
I
E
N
S
T
E**



THE WEATHER BUREAU HELPS FARMERS TO PLAN THEIR CROP



THE WEATHER BUREAU: DEPARTMENT OF ENVIRONMENTAL AFFAIRS & TOURISM
DIE WEERBURU: DEPARTEMENT VAN OMGEWINGSAKE EN TOERISME

