

*THE PROVINCE OF
GAUTENG*

*DIE PROVINSIE
GAUTENG*

**Provincial Gazette Extraordinary
Buitengewone Provinsiale Koerant**

Vol. 13

**PRETORIA, 17 JANUARY 2007
JANUARIE**

No. 11

CONTENTS · INHOUD

<i>No.</i>	<i>Page No.</i>	<i>Gazette No.</i>
GENERAL NOTICE		
215 Gauteng Transport Infrastructure Regulations, 2002: Proposed expropriation of tunnel servitudes in respect of the Gautrain Rapid Rail Link Project between Pretoria, Johannesburg and the OR Tambo International Airport	3	11

GENERAL NOTICE

NOTICE 215 OF 2007

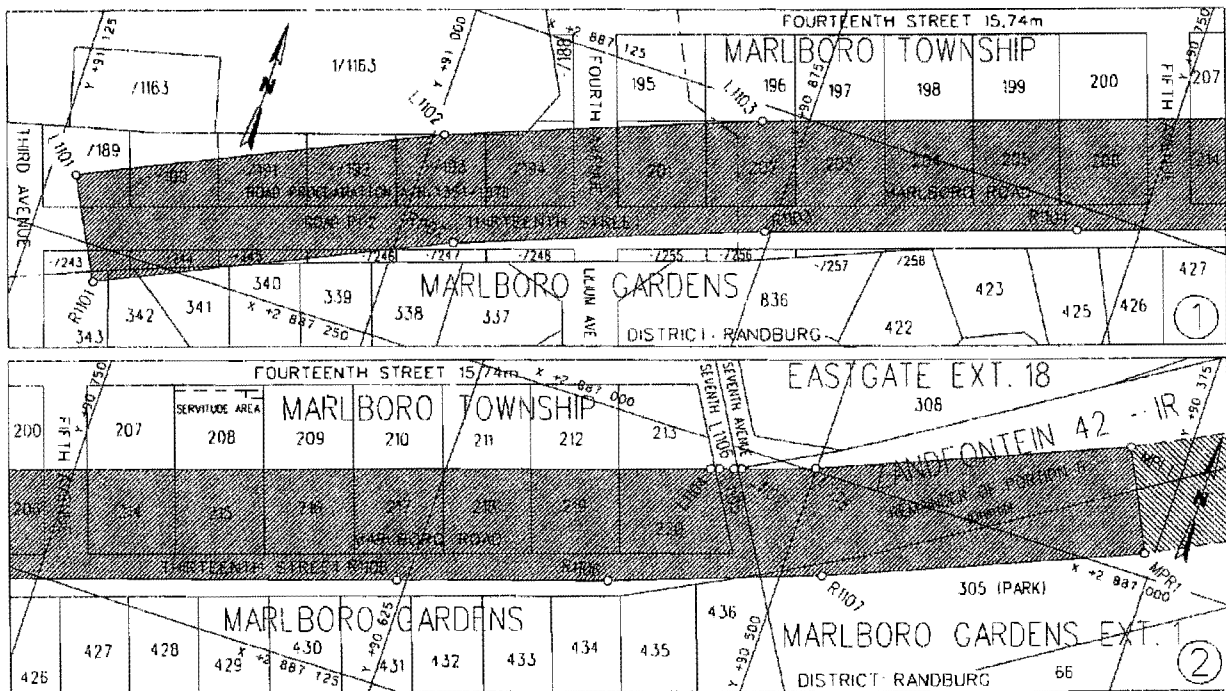
PROPOSED EXPROPRIATION OF TUNNEL SERVITUDES IN RESPECT OF THE GAUTRAIN RAPID RAIL LINK PROJECT BETWEEN PRETORIA, JOHANNESBURG AND THE O R TAMBO INTERNATIONAL AIRPORT

In terms of regulation 13 of the Gauteng Transport Infrastructure Regulations 2002, the MEC for Public Transport, Roads and Works intends to register real rights over the land as indicated on the accompanying sketch plans in order to construct tunnels below the surface of the said land within the area.

In terms of the aforementioned regulation interested parties are requested to lodge written comments on or objections with regard to the aforementioned intention as contemplated by the MEC, in writing to the Head : Department of Public Transport, Roads and Works, Private Bag X83, Marshalltown 2107 (Fax (011) 355 7235) within 21 (twenty one) days from the date of this notice.

Reference: 2/1/7/8-Gautrain

Dated: 11 January 2007



REFERENCE / VERWYSINGS

**VOORGESTELDE GAUTREIN TONNEL SERWITUUT
PROPOSED GAUTRAIN TUNNEL SERVITUDE**



DIE FIGUUR : L1101 - L1108, MPL1, MPR1, R1107 - R1101, L1101.
THE FIGURE : L1101 - L1108, MPL1, MPR1, R1107 - R1101, L1101.

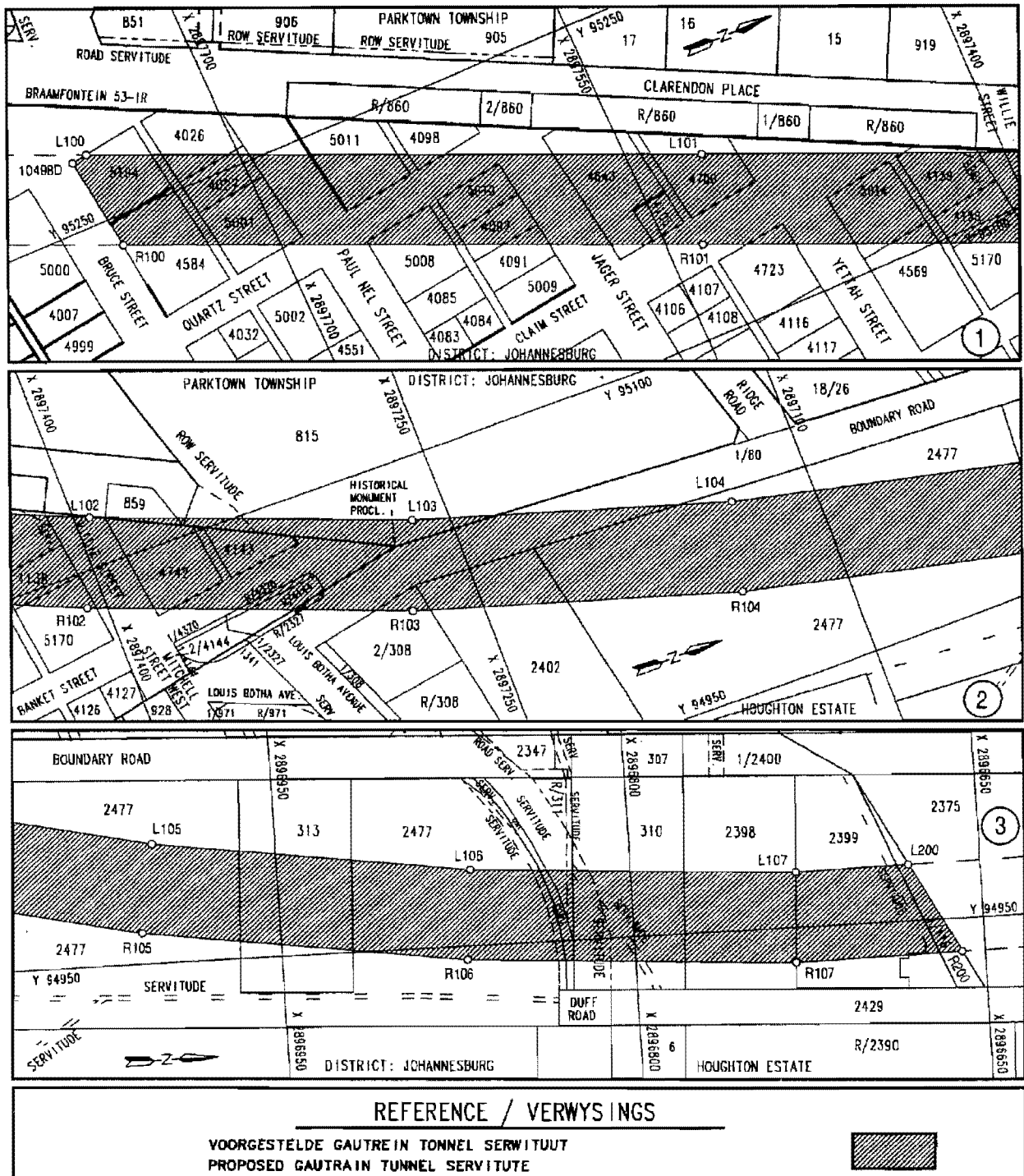
VERTEENWOORDIG DIE VOORGESTELDE GAUTREIN TONNEL SERWITUUT OOR ERWE 343-340 EN 436 IN MARLBORO GARDENS, DIE RESTANTE VAN LOTTE 243-246, 189-194, LOTTE 201-206, 214-220 GEDEELTES VAN DERTIENDE STRAAT, VIERDELAAN, VYFDELAAN EN SEWENDELAAN IN MARLBORO, DIE RESTANT VAN GEDEELTE 6 VAN DIE PLAAS ZANDFONTEIN 42-IR, ERF 305 IN MARLBORO GARDENS UITBREIDING 1 EN IN DETAIL GETOON OP PLAN GRP 03/38/08Exp.

REPRESENTS THE PROPOSED GAUTRAIN TUNNEL SERVITUDE OVER ERVEN 243-340 AND 436 IN MARLBORO GARDENS, THE REMAINDERS OF LOTS 243-246, 189-194, LOTS 201-206, 214-220 PORTIONS OF THIRTEENTH STREET, FOURTH AVENUE, FIFTH AVENUE, AND SEVENTH AVENUE IN MARLBORO, THE REMAINDER OF PORTION 6 OF THE FARM ZANDFONTEIN 42 I-R, ERF 305 IN MARLBORO GARDENS EXTENSION 1 AND SHOWN IN DETAIL ON PLAN GRP 03/38/08Exp.

BUNDEL NR. / FILE NO. 2/1/6/1

KOÖRDINATE LYS/CO-ORDINATE LIST WG 29° KONST./CONST. Y= +/- 0.00 X= +2 800 000.00

L1101	+91115.779	+87227.427	R1101	+91097.335	+87262.921	MPL1	+90395.809	+86955.575
L1102	+90996.274	+87171.688	R1102	+90980.931	+87208.607	MPR1	+90378.523	+86991.647
L1103	+90890.706	+87130.810	R1103	+90877.167	+87169.175			
L1104	+90535.379	+87010.728	R1104	+90771.549	+87133.400			
L1105	+90532.540	+87009.757	R1105	+90628.365	+87085.881			
L1106	+90527.608	+87008.120	R1106	+90557.126	+87061.915			
L1107	+90524.971	+87007.143	R1107	+90485.885	+87035.987			
L1108	+90500.329	+86998.687						



DIE FIGUUR : L100, L101, L102, L103, L104, L105, L106, L107, L200, R200, R107, R106, R105,
 THE FIGURE : R104, R103, R102, R101, R100, 104980, L100

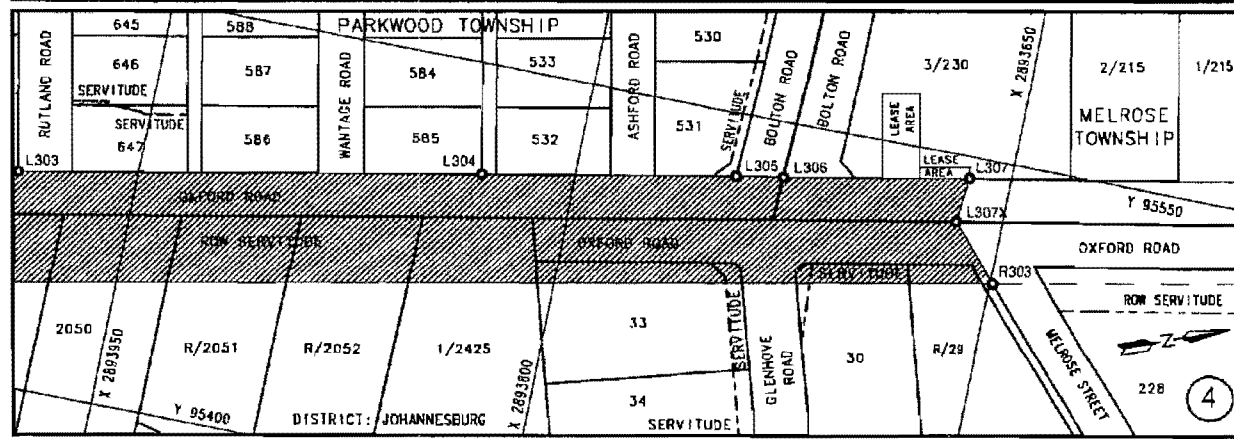
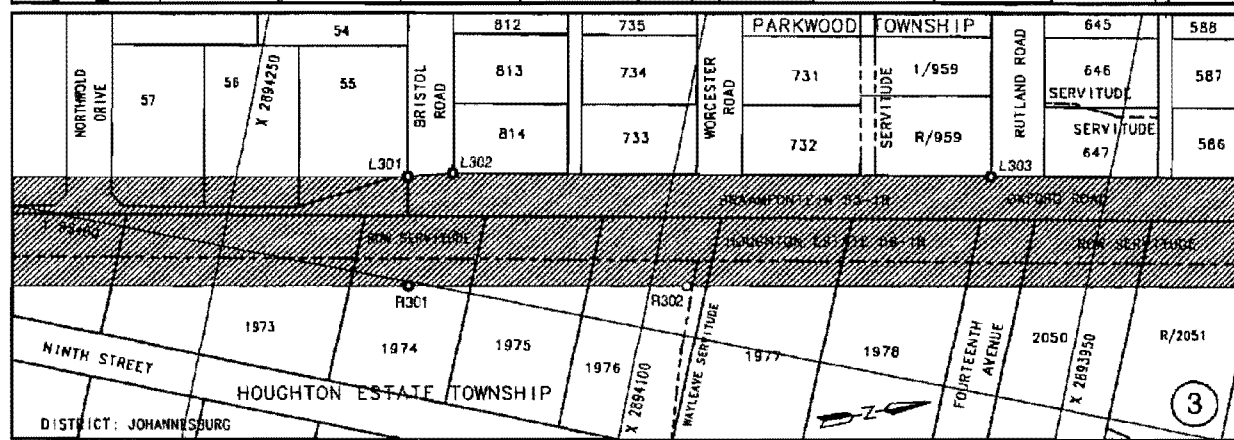
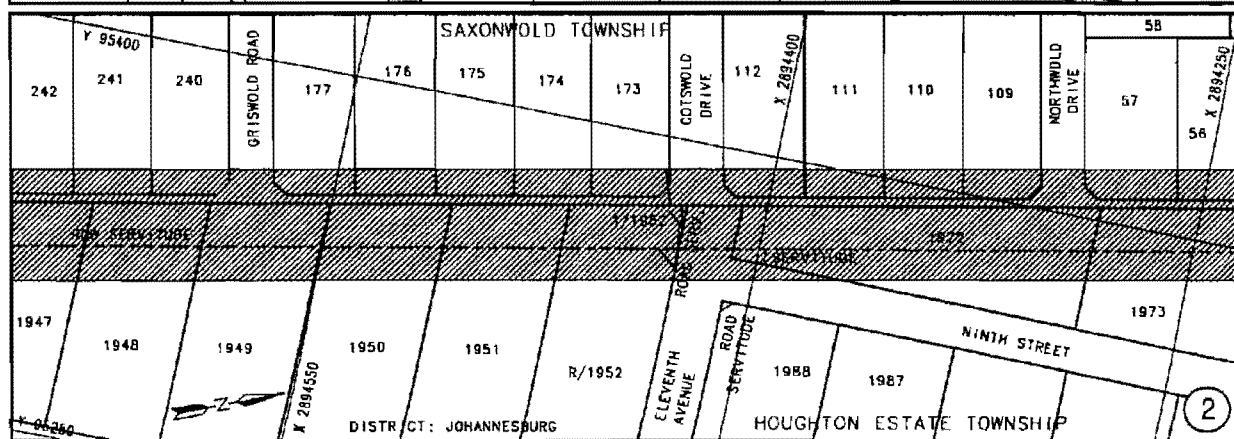
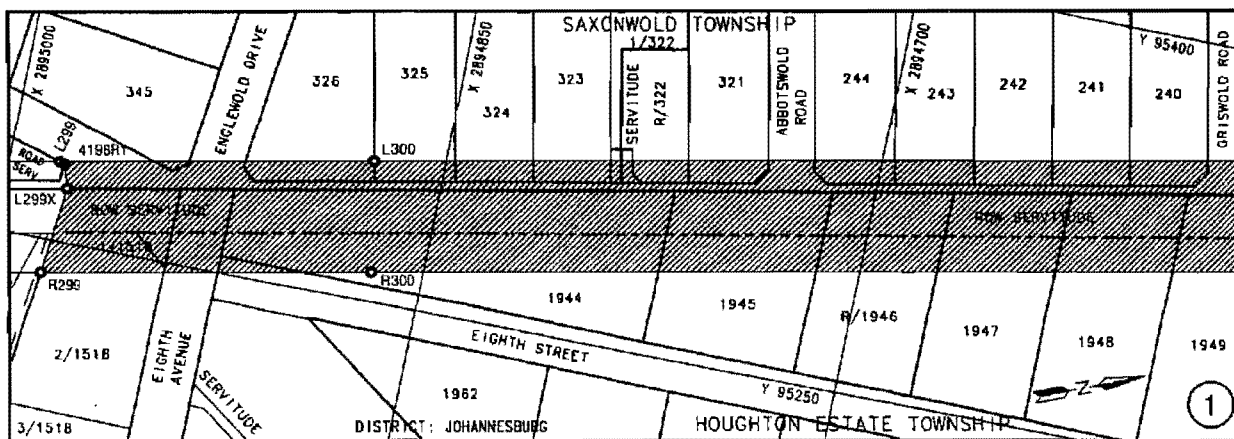
VERTEENWOORDIG DIE VOORGESTELDE GAUTREIN TONNEL SERWITUUT OOR ERWE
 5194, 4584, 4026, 4027, 5001, 5011, 5008, 4098, 5010, 4092, 4091, 4643, 4103,
 4700, 4723, 5014, 4569, 4139, 4138, 5170, 4742 EN 4143, DIE RESTANT VAN ERWE 4370 EN
 4144, GEDEELTES VAN STEEG, JAGER STRAAT, QUARTZ STRAAT, PAUL NEL STRAAT, YETTAH
 STRAAT, CLAIM STRAAT, WILLIE STRAAT EN BANKET STRAAT IN JOHANNESBURG, DIE RESTANT VAN
 ERF 2327, GEDEELTE 2 VAN ERF 308, ERWE 2402, 2477 EN 313, GEDEELTE 1 VAN ERF 311, DIE
 RESTANT VAN ERF 311, ERWE 310, 2398 EN 2399, GEDEELTE 1 VAN ERF 116, EN N GEDEELTE
 VAN BOUNDARY WEG IN HOUGHTON LANDGOED, ERWE 859 EN 815, EN N GEDEELTE VAN CLARENDON
 PLACE IN PARKTOWN SOOS IN DETAIL GETOON OP PLANNE GRP 03/38/01Exp en GRP 03/38/02Exp.

REPRESENTS THE PROPOSED GAUTRAIN TUNNEL SERVITUDE OVER ERVEN
 5194, 4584, 4026, 4027, 5001, 5011, 5008, 4098, 5010, 4092, 4091, 4643, 4103, 4700,
 4723, 5014, 4569, 4139, 4138, 5170, 4742 AND 4143, THE REMAINDER OF ERVEN 4370 AND
 4144, PORTIONS OF ALLEYS, JAGER STREET, QUARTZ STREET, PAUL NEL STREET, YETTAH STREET,
 CLAIM STREET, WILLIE STREET AND BANKET STREET IN JOHANNESBURG, THE REMAINDER OF ERF
 2327, PORTION 2 OF ERF 308, ERVEN 2402, 2477 AND 313, PORTION 1 OF ERF 311, THE
 REMAINDER OF ERF 311, ERVEN 310, 2398 AND 2399, PORTION 1 OF ERF 116 AND A PORTION
 OF BOUNDARY ROAD IN HOUGHTON ESTATE, ERVEN 859 AND 815, AND A PORTION OF CLARENDON
 PLACE IN PARKTOWN AS SHOWN IN DETAIL ON PLANS GRP 03/38/01Exp and GRP 03/38/02Exp.

BUNDEL NR. / FILE NO. 2/1/6/1

KOORDINATE LYS/CO-ORDINATE LIST WG 29 KÖNST./CONST. Y=+/-0.00 X= +2 800 000.00

L100	+95280.409	+97760.527	L107	+94974.611	+96731.739	R105	+94963.852	+97009.178
L101	+95175.976	+97519.976	L200	+94975.090	+96680.826	R106	+94944.029	+96872.260
L102	+95121.962	+97393.390	R100	+95237.192	+97761.424	R107	+94934.628	+96732.897
L103	+95072.929	+97265.633	R101	+95139.284	+97535.906	R200	+94935.316	+96659.806
L104	+95032.994	+97135.100	R102	+95085.065	+97408.837	104980	+95279.527	+97767.102
L105	+95003.193	+97001.945	R103	+95035.156	+97278.794			
L106	+94983.806	+96868.037	R104	+94994.323	+97145.327			



REFERENCE / VERWYSINGS

VOORGESTELDE GAUTREIN TONNEL SERWITUUT
 PROPOSED GAUTRAIN TUNNEL SERVITUDE



DIE FIGUUR : L299, L300, L301, L302, L303, L304, L305, L306, L307, L307X, R303, R302, R301,
 THE FIGURE : R300, R299, L299X, 4198R1, L299

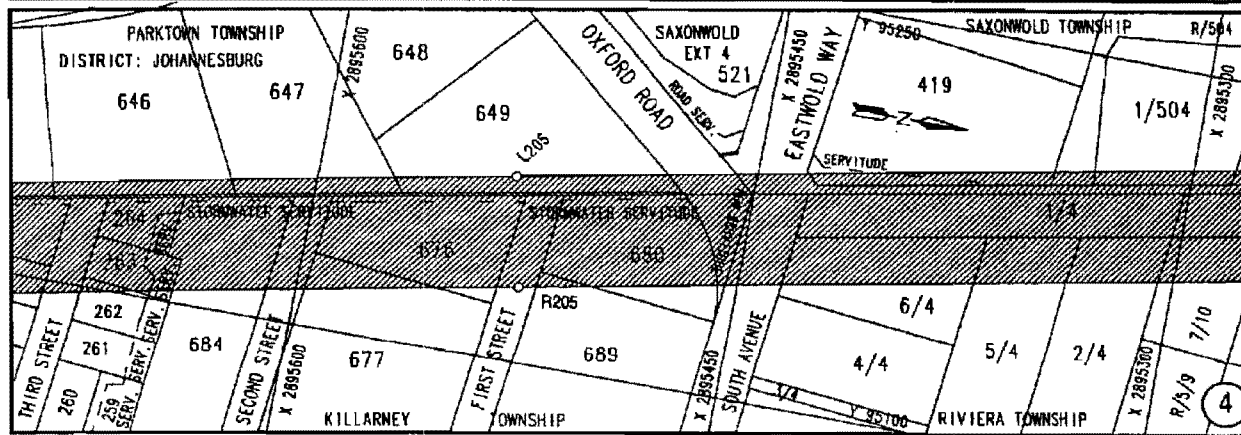
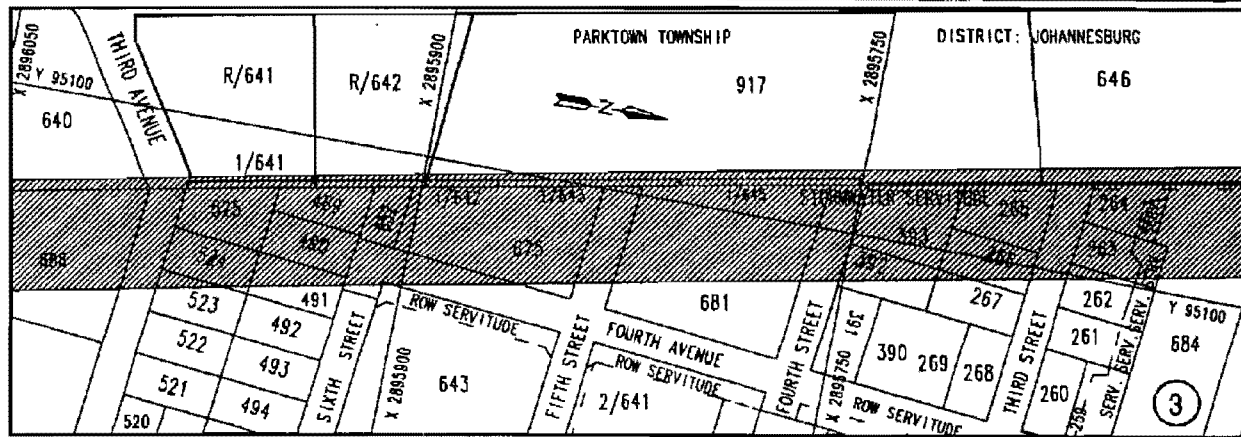
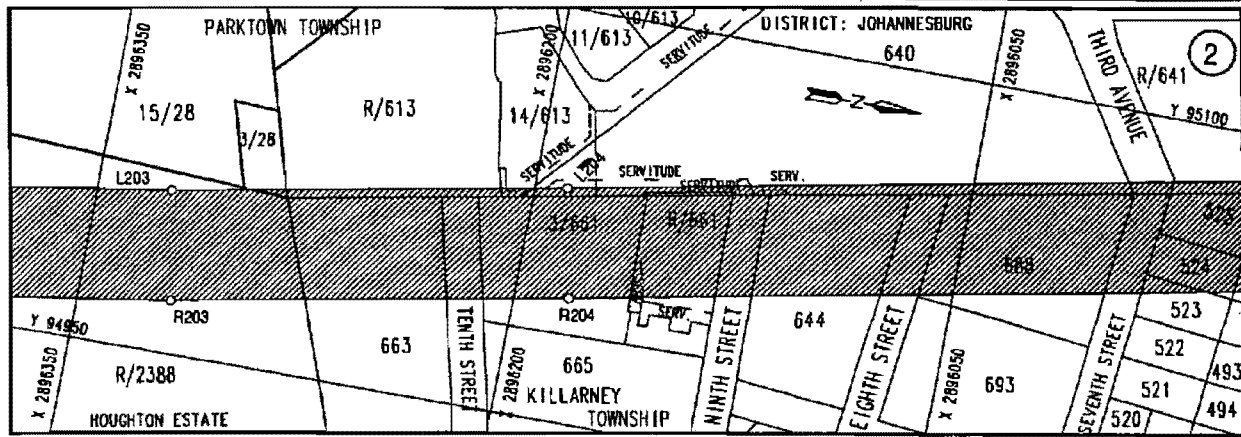
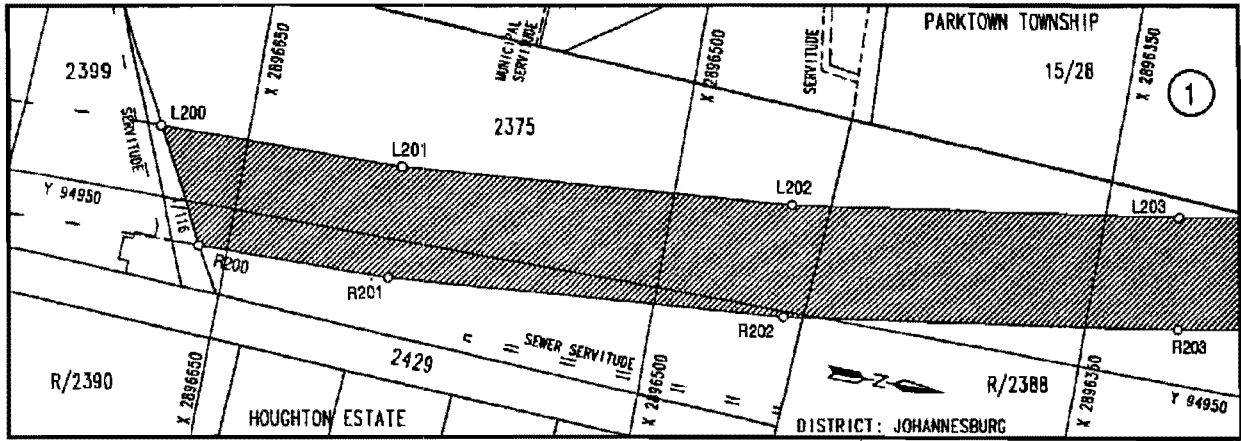
VERTEENWOORDIG DIE VOORGESTELDE GAUTREIN TONNEL SERWITUUT OOR GEDEELTES VAN OXFORD WEG, ENGLEWOOD RYLAAN, ABBOTSWOLD WEG, GRISWOLD WEG, COTSWOLD RYLAAN, NORTHWOLD RYLAAN, ERWE 345, 326, 325, 324 EN 323, GEDEELTE 1 VAN ERF 322, DIE RESTANT VAN ERF 322, ERWE 321, 244, 243, 242, 241, 240, 177, 176, 175, 174, 173, 112, 111, 110, 109, 57, 56 EN 55 IN SAXONWOLD, GEDEELTES VAN AGTSTE LAAN, AGTSTE STRAAT, ELFDE LAAN, NEEGENDE STRAAT, VEERTIENDE LAAN, GEDEELTE 1 EN 2 VAN ERF 1518, ERWE 1944 EN 1945, DIE RESTANT VAN ERF 1946, ERWE 1947, 1948, 1949, 1950 EN 1951, DIE RESTANT VAN ERF 1952, ERWE 1972, 1973, 1974, 1975, 1976, 1977, 1978, 2050 EN 2051, DIE RESTANT VAN ERF 2052 EN GEDEELTE 1 VAN ERF 2425 IN HOUGHTON LANDGOED, ERWE 33 EN 30, EN DIE RESTANT VAN ERF 29 IN MELROSE LANDGOED EN OXFORD WEG IN PARK WOOD SOOS IN DETAIL GETOON OP PLANNE GRP 03/38/03Exp EN GRP 03/38/04Exp.

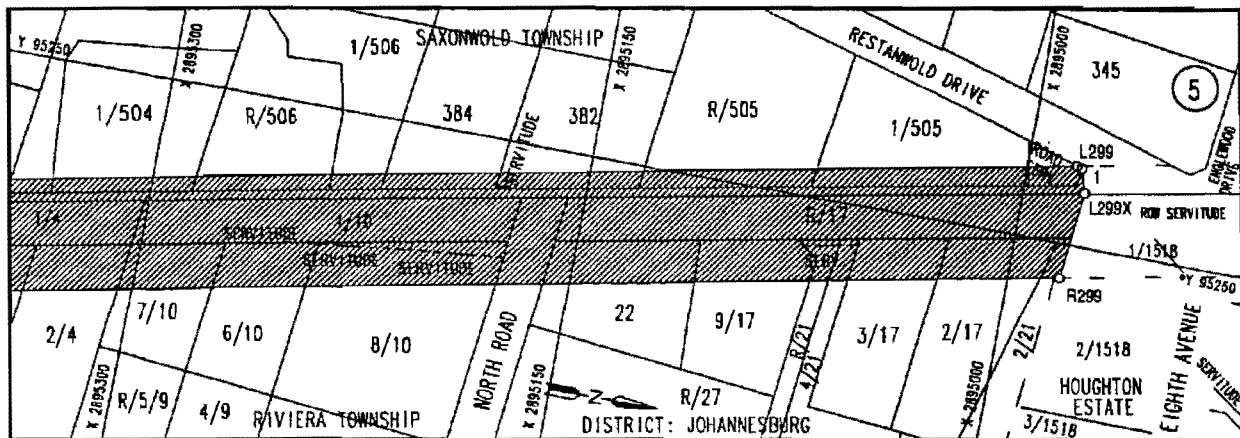
REPRESENTS THE PROPOSED GAUTRAIN TUNNEL SERVITUDE OVER PORTIONS OF OXFORD ROAD, ENGLEWOOD DRIVE, ABBOTSWOLD ROAD, GRISWOLD ROAD, COTSWOLD DRIVE, NORTHWOLD DRIVE, ERVEN 345, 326, 325, 324 AND 323, PORTION 1 OF ERF 322, THE REMAINDER OF ERF 322, ERVEN 321, 244, 243, 242, 241, 240, 177, 176, 175, 174, 173, 112, 111, 110, 109, 57, 56 AND 55 IN SAXONWOLD, PORTIONS OF EIGHTH AVENUE, EIGHTH STREET, ELEVENTH AVENUE, NINTH STREET, FOURTEENTH AVENUE, PORTION 1 AND 2 OF ERF 1518, ERVEN 1944 AND 1945, THE REMAINDER OF ERF 1946, ERVEN 1947, 1948, 1949, 1950 AND 1951, THE REMAINDER OF PORTION 1952, ERVEN 1972, 1973, 1974, 1975, 1976, 1977, 1978 AND 2050, THE REMAINDER OF PORTION 2051, THE REMAINDER OF ERF 2052 AND PORTION 1 OF ERF 2425 IN HOUGHTON ESTATE, ERVEN 33 AND 30, AND THE REMAINDER OF ERF 29 IN MELROSE ESTATE AND OXFORD ROAD IN PARK WOOD AS SHOWN IN DETAIL ON PLANS GRP 03/38/03Exp EN GRP 03/38/04Exp.

BUNDEL NR. / FILE NO. 2/1/6/1

KOORDINATE LYS/CO-ORDINATE LIST WG 29 KÖNST./CONST. Y=+/-0.00 X= +2 800 000.00

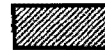
L299	+95278.278	+94982.474	L305	+95526.592	+93744.117	R302	+95417.827	+94087.313
L300	+95299.860	+94875.357	L306	+95529.616	+93727.993	R303	+95506.141	+93848.977
L301	+95437.583	+94191.734	L307	+95541.772	+93664.500	L299X	+95289.257	+94978.196
L302	+95441.857	+94176.910	R299	+95237.867	+94981.521	L307X	+95525.554	+93666.208
L303	+95478.143	+93991.572	R300	+95280.648	+94867.457	4198R1	+95277.746	+94980.685
L304	+95509.269	+93832.598	R301	+95398.381	+94183.834			





REFERENCE / VERWYSINGS

VOORGESTELDE GAUTREIN TONNEL SERWITUUT
PROPOSED GAUTRAIN TUNNEL SERVITUDE



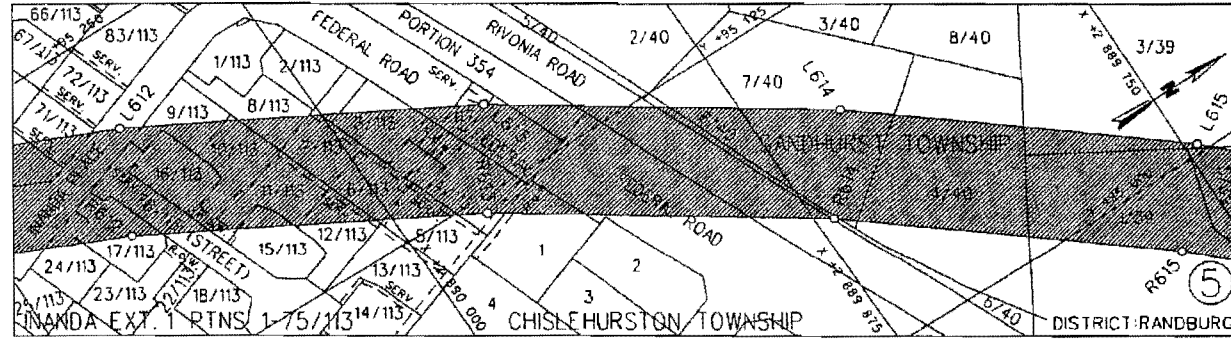
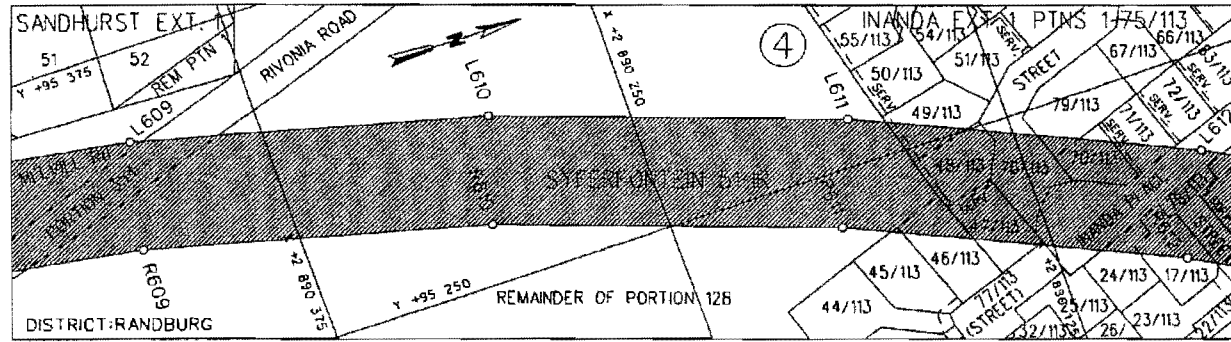
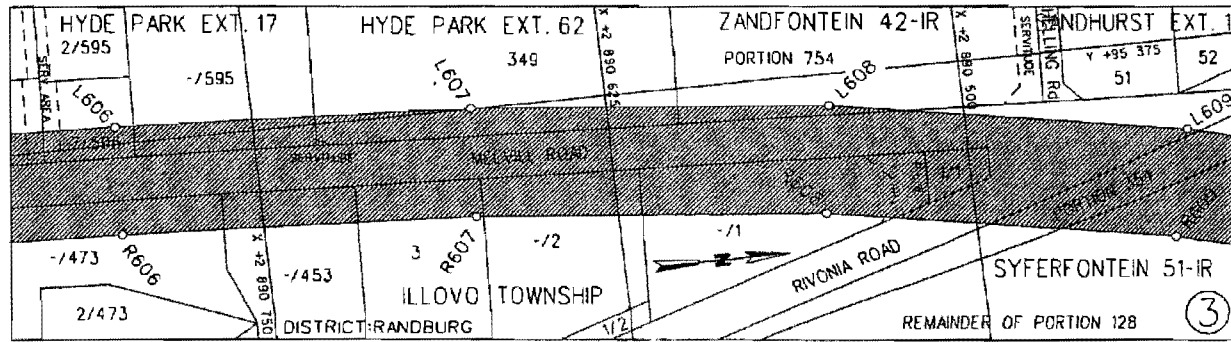
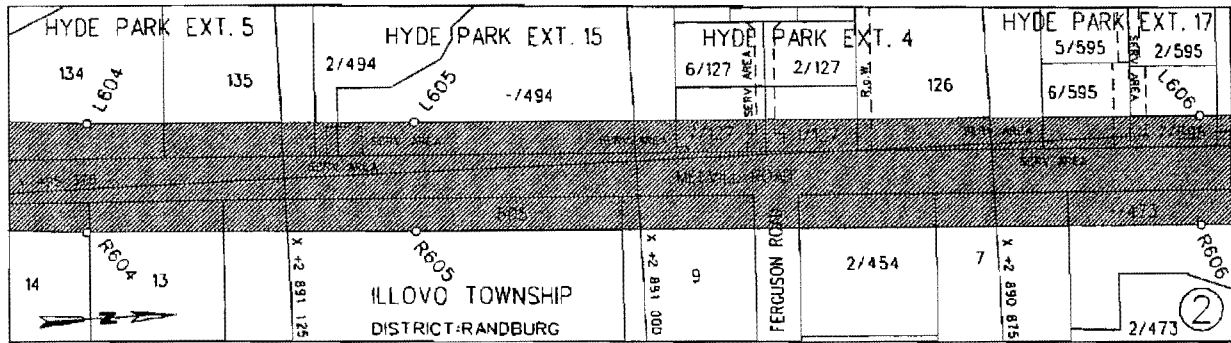
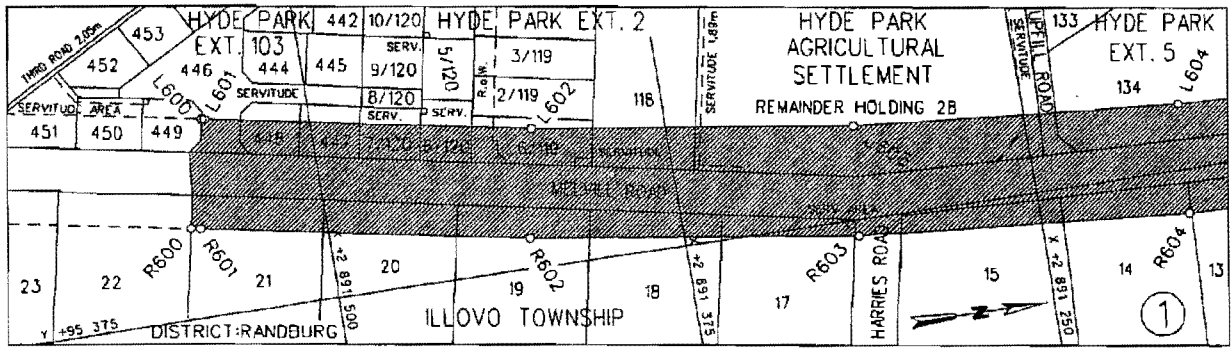
DIE FIGUUR : L200, L201, L202, L203, L204, L205, L299,1, L299X, R299, R205, R204, R203, R202,
THE FIGURE : R201, R200, L200

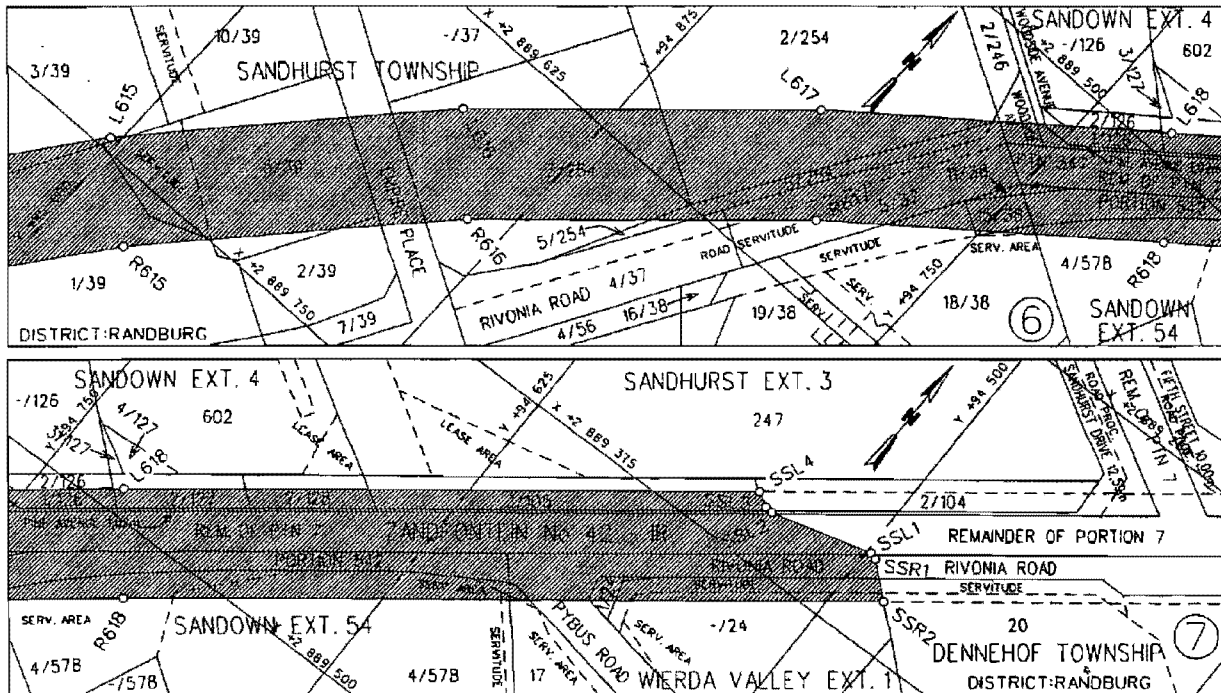
VERTEENWOORDIG DIE VOORGESTELDE GAUTREIN TONNEL SERWITUUT OOR ERF 2375 EN DIE RESTANT VAN ERF 2388 HOUGHTON LANGOED, GEDEELTE 3 VAN ERF 28, DIE RESTANT VAN ERF 613, GEDEELTE 14 VAN ERF 613, ERF 640, DIE RESTANT VAN ERF 641, GEDEELTE 1 VAN ERF 641, GEDEELTE 1 VAN ERF 642, DIE RESTANT VAN ERF 642, GEDEELTE 1 VAN ERF 643, GEDEELTE 1 VAN ERF 644, ERWE 917, 646, 647 EN 649, GEDEELTES VAN STEEG, DERDE LAAN EN OXFORD WEG IN PARKTOWN, ERF 419, DIE RESTANT VAN ERF 504, GEDEELTE 1 VAN ERF 504, DIE RESTANT VAN ERF 506, GEDEELTE 1 VAN ERF 506, ERWE 384 EN 382, DIE RESTANT VAN ERF 505, GEDEELTE 1 VAN ERF 505, EN GEDEELTES VAN EASTWOLD WAY EN OXFORD WEG IN SAXONWOLD, ERF 663, GEDEELTE 3 VAN ERF 661, DIE RESTANT VAN ERF 661, ERWE 664, 688, 525, 524, 523, 489, 490, 491, 652, 675, 643, 681, 393, 392, 265, 266, 267, 264, 263, 262, 684, 677, 676, 689 EN 680, GEDEELTES VAN TIENDE STRAAT, NEGENDE STRAAT, AGSTE STRAAT, SEVENDIE STRAAT, SESDE STRAAT, VIERDE LAAN, VYFDE STRAAT, VIERDE STRAAT, DERDE STRAAT, TWEEDE STRAAT EN EERSTE STRAAT IN KILLARNEY, GEDEELTE 1 VAN ERF 4, GEDEELTE 6 VAN ERF 4, GEDEELTE 5 VAN ERF 4, GEDEELTE 2 VAN ERF 4, GEDEELTE 1 VAN ERF 10, GEDEELTE 7 VAN ERF 10, GEDEELTE 6 VAN ERF 10, GEDEELTE 8 VAN ERF 10, ERF 22, DIE RESTANT VAN ERF 17, GEDEELTE 9 VAN ERF 17, GEDEELTE 3 VAN ERF 17, GEDEELTE 2 VAN ERF 17, DIE RESTANT VAN ERF 21, GEDEELTE 4 VAN ERF 21, GEDEELTE 2 VAN ERF 21, GEDEELTES VAN OF SUID LAAN EN NOORD WEG IN RIVIERA SOOS IN DETAIL GETOON OP PLANNE GRP 03/38/02Exp EN GRP 03/38/03Exp.

REPRESENTS THE PROPOSED GAUTRAIN TUNNEL SERVITUDE OVER ERF 2375 AND THE REMAINDER OF ERF 2388 IN HOUGHTON ESTATE, PORTION 3 OF ERF 28, THE REMAINDER OF ERF 613, PORTION 14 OF ERF 613, ERF 640, THE REMAINDER OF ERF 641, PORTION 1 OF ERF 641, PORTION 1 OF ERF 642, THE REMAINDER OF ERF 642, PORTION 1 OF ERF 643, PORTION 1 OF ERF 644, ERVEN 917, 646, 647 AND 649, PORTIONS OF LANE, THIRD AVENUE AND OXFORD ROAD IN PARKTOWN, ERF 419, THE REMAINDER OF ERF 504, PORTION 1 OF ERF 504, THE REMAINDER OF ERF 506, PORTION 1 OF ERF 506, ERVEN 384 AND 382, THE REMAINDER OF ERF 505, PORTION 1 OF ERF 505, AND PORTIONS OF EASTWOLD WAY AND OXFORD ROAD IN SAXONWOLD, ERF 663, PORTION 3 OF ERF 661, THE REMAINDER OF ERF 661, ERVEN 644, 688, 525, 524, 523, 489, 490, 491, 652, 675, 643, 681, 393, 392, 265, 266, 267, 264, 263, 262, 684, 677, 676, 689 AND 680, PORTIONS OF TENTH STREET, NINTH STREET, EIGHTH STREET, SEVENTH STREET, SIXTH STREET, FOURTH AVENUE, FIFTH STREET, FOURTH STREET, THIRD STREET, SECOND STREET AND FIRST STREET IN KILLARNEY, PORTION 1 OF ERF 4, PORTION 6 OF ERF 4, PORTION 5 OF ERF 4, PORTION 2 OF ERF 4, PORTION 1 OF ERF 10, PORTION 7 OF ERF 10, PORTION 6 OF ERF 10, PORTION 8 OF ERF 10, ERF 22, THE REMAINDER OF ERF 17, PORTION 8 OF ERF 17, PORTION 3 OF ERF 17, PORTION 2 OF ERF 17, THE REMAINDER OF ERF 21, PORTION 4 OF ERF 21, PORTION 2 OF ERF 21, PORTIONS OF SOUTH AVENUE AND NORTH ROAD IN RIVIERA AS SHOWN IN DETAIL ON PLANS GRP 03/38/02Exp EN GRP 03/38/03Exp.

BUNDEL NR. / FILE NO. 2/1/6/1

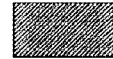
KOORDINATE LYS/CO-ORDINATE LIST WG 29 KŌNST./CONST. Y=+/-0.00 X= +2 800 000.00								
L200	+94975.090	+96680.826	L299	+95278.279	+94962.474	R205	+95126.320	+95524.260
L201	+94975.895	+96595.278	R200	+94935.318	+96659.806	R299	+95237.667	+94981.521
L202	+94987.739	+96458.485	R201	+94935.941	+96583.388	L299X	+95268.257	+94978.198
L203	+95008.804	+96324.386	R202	+94948.051	+96453.500	1	+95277.746	+94980.685
L204	+95035.155	+96189.199	R203	+94969.492	+96317.003			
L205	+95167.532	+95532.160	R204	+94995.943	+96181.289			





REFERENCE / VERWYSINGS

VOORGESTELDE GAUTRAIN TONNEL SERWITUUT
 PROPOSED GAUTRAIN TUNNEL SERVITUDE



DIE FIGUUR : L600 - L618, SSL4 - SSL1, SSR1 - SSR2, R618 - R600, L600.
 THE FIGURE : L600 - L618, SSL4 - SSL1, SSR1 - SSR2, R618 - R600, L600.

VERTEENWOORDIG DIE VOORGESTELDE GAUTRAIN TONNEL SERWITUUT OOR 'N GEDEELTE VAN MELVILLWEG, LOTTE 21-17, 'N GEDEELTE VAN HARRIESWEG, LOTTE 15-13, 505, 9, 'N GEDEELTE VAN FERGUSONWEG, GEDEELTE 2 VAN LOT 454, LOT 7, DIE RESTANTE VAN LOTTE 473, 453, 2, 1, LOT 3 EN 'N GEDEELTE VAN RIVONIAWEG IN ILLOVO, ERWE 446, 448 EN 447 IN HYDEPARK UITBREIDING 103, GEDEELTES 7, 6 VAN ERF 120, GEDEELTE 6 VAN ERF 118 EN ERF 118 IN HYDEPARK UITBREIDING 2, DIE RESTANT VAN HOEWE 28 IN HYDEPARK LANDBOU NEDERSETTING, 'N GEDEELTE VAN UPFILLWEG, ERWE 134 EN 135 IN HYDEPARK UITBREIDING 5, GEDEELTE 2 EN DIE RESTANT VAN ERF 494 IN HYDEPARK UITBREIDING 15, GEDEELTES 7, 1 VAN ERF 127 EN ERF 126 IN HYDEPARK UITBREIDING 4, GEDEELTES 6, 7 EN DIE RESTANT VAN ERF 595 IN HYDEPARK UITBREIDING 17, ERF 349 IN HYDEPARK UITBREIDING 62, GEDEELTE 754 VAN DIE PLAAS ZANDFONTEIN 42-IR, GEDEELTE 354 EN DIE RESTANT VAN GEDEELTE 128 VAN DIE PLAAS SYFERFONTEIN 51-IR, GEDEELTES 49-46, 76, 79, 70, 71, 77, 24, 17, 78, 9, 16, 10, 11, 15, 12, 8-3 VAN ERF 113 GEDEELTES VAN INANDA PLACE EN FEDERALWEG IN INANDA UITBREIDING 1 GEDEELTES 1-75 VAN ERF 113, ERF 1 EN 'N GEDEELTE VAN FEDERALWEG IN CHISLEHURSTON, 'N GEDEELTE VAN RIVONIAWEG, GEDEELTES 6, 7, 4 VAN LOT 40, GEDEELTES 1, 3, 5, 2 VAN LOT 39, 'N GEDEELTE VAN EMPIRE PLACE, GEDEELTES 3, 2, 5 VAN LOT 254, GEDEELTES 4, 5 VAN LOT 37, GEDEELTES 11, 15 EN 18 VAN LOT 38 IN SANDHURST, WOODSIDELAAN, GEDEELTE 1 VAN ERF 126, GEDEELTE 2 VAN ERF 127, GEDEELTE 2 VAN ERF 128 EN 'N GEDEELTE VAN PINELAAN IN SANDOWN UITBREIDING 4, GEDEELTE 2 VAN ERF 105 EN 'N GEDEELTE VAN PINELAAN IN SANDOWN UITBREIDING 3, GEDEELTES 349, 542 EN DIE RESTANT VAN GEDEELTE 7 VAN DIE PLAAS ZANDFONTEIN 42-IR, GEDEELTE 4 VAN ERF 578 IN SANDOWN UITBREIDING 54, ERF 17, GEDEELTES VAN PYBUSWEG, RIVONIAWEG, GEDEELTE 1 EN DIE RESTANT VAN ERF 24 IN WIERDA VALLEY UITBREIDING 1 EN IN DETAIL GETOON OP PLANNE GRP03/3B/05Exp-06Exp.

REPRESENTS THE PROPOSED GAUTRAIN TUNNEL SERVITUDE OVER A PORTION OF MELVILL ROAD, LOTS 21-17, A PORTION OF HARRIES ROAD, LOTS 15-13, 505, 9, A PORTION OF FERGUSON ROAD, PORTION 2 OF LOT 454, LOT 7, THE REMAINDERS OF LOTS 473, 453, 2, 1, LOT 3 AND A PORTION OF RIVONIA ROAD IN ILLOVO, ERVEN 446, 448 AND 447 IN ILLOVO, ERVEN 446, 448 AND 447 IN HYDE PARK EXTENSION 103, PORTIONS 7, 6 OF ERF 120, PORTION 6 OF ERF 119 AND ERF 118 IN HYDE PARK EXTENSION 2, THE REMAINDER OF HOLDING 28 IN HYDE PARK AGRICULTURAL SETTLEMENT, A PORTION OF UPFILL ROAD, ERVEN 134 AND 135 IN HYDE PARK EXTENSION 5, PORTION 2 AND THE REMAINDER OF ERF 494 IN HYDE PARK EXTENSION 15, PORTIONS 7, 1 OF ERF 127 AND ERF 126 IN HYDE PARK EXTENSION 4, PORTIONS 6, 7 AND THE REMAINDER OF ERF 595 IN HYDE PARK EXTENSION 17, ERF 349 IN HYDE PARK EXTENSION 62, PORTION 754 OF THE FARM

ZANDFONTEIN 42-IR, PORTION 354 AND THE REMAINDER OF PORTION 128 OF THE FARM SYFERFONTEIN 51-IR, PORTIONS 49-46, 76, 79, 70, 71, 77, 24, 17, 78, 9, 16, 10, 11, 15, 12, 8-3, OF ERF 113, PORTIONS OF INANDA PLACE AND FEDERAL ROAD IN INANDA EXTENSION 1 PORTIONS 1-75 OF ERF 113, ERF 1 AND A PORTION OF FEDERAL ROAD IN CHISLEHURSTON, A PORTION OF RIVONIA ROAD, PORTIONS 6, 7, 4, OF LOT 40, PORTIONS 1, 3, 5, 2 OF LOT 39, A PORTION OF EMPIRE PLACE, PORTIONS 3, 2, 5 OF LOT 254, PORTIONS 4, 5 OF LOT 37, PORTIONS 11, 15 AND 18 OF LOT 38 IN SANDHURST, A PORTION OF WOODSIDE AVENUE, PORTION 1 OF ERF 126, PORTION 2 OF ERF 127, PORTION 2 OF ERF 128, AND A PORTION OF PINE AVENUE IN SANDOWN EXTENSION 4, PORTION 2 OF ERF 105 AND A PORTION OF PINE AVENUE IN SANDOWN EXTENSION 3, PORTIONS 347, 542 AND THE REMAINDER OF PORTION 7 OF THE FARM ZANDFONTEIN 42-IR, PORTION 4 OF ERF 578 IN SANDOWN EXTENSION 54, ERF 17, PORTIONS OF PYBUS ROAD, RIVONIA ROAD, PORTION 1 AND THE REMAINDER OF ERF 24 IN WIERDA VALLEY EXTENSION 1 AND SHOWN IN DETAIL ON PLANS GRP03/38/05Exp-06Exp.

BUNDEL NR. / FILE NO. 2/1/6/1

KOÖRDINATE LYS/CO-ORDINATE LIST WG 29° KONST./CONST. Y= +/- 0.00 X= +2 800 000.00

L600	+95447.329	+91538.308	L615	+95003.420	+89745.553	R610	+95271.325	+90309.719
L601	+95447.156	+91537.415	L616	+94916.376	+89653.523	R611	+95229.958	+90192.465
L602	+95425.768	+91422.813	L617	+94821.080	+89568.191	R612	+95179.517	+90080.128
L603	+95408.903	+91305.123	L618	+94722.616	+89490.400	R613	+95119.283	+89971.350
L604	+95398.912	+91193.562	R600	+95408.520	+91548.301	R614	+95050.637	+89868.877
L605	+95393.262	+91078.023	R601	+95407.884	+91545.015	R615	+94973.239	+89771.804
L606	+95381.465	+90798.564	R602	+95386.383	+91429.802	R616	+94888.556	+89682.125
L607	+95375.226	+90673.060	R603	+95369.176	+91313.788	R617	+94795.671	+89599.084
L608	+95363.262	+90546.142	R604	+95358.979	+91195.866	R618	+94698.160	+89522.052
L609	+95341.389	+90420.171						
L610	+95309.668	+90297.978	R605	+95353.298	+91079.711	SSL1	+94498.425	+89345.371
L611	+95267.179	+90177.546	R606	+95341.501	+90800.252	SSL2	+94535.092	+89355.317
L612	+95215.369	+90062.165	R607	+95335.295	+90675.401	SSL3	+94537.840	+89354.962
L613	+95153.414	+89950.492	R608	+95323.599	+90551.321	SSL4	+94543.280	+89351.834
L614	+95082.912	+89845.249	R609	+95302.302	+90428.667	SSR1	+94495.859	+89345.977
						SSR2	+94483.998	+89356.578