

***THE PROVINCE OF
GAUTENG***

***DIE PROVINSIE
GAUTENG***

**Provincial Gazette Extraordinary
Buitengewone Provinsiale Koerant**

Vol. 13

PRETORIA, 28 SEPTEMBER 2007

No. 271

CONTENTS • INHOUD

<i>No.</i>		<i>Page No.</i>	<i>Gazette No.</i>
GENERAL NOTICES			
4164	Amendment: Acceptance of preliminary designs of provincial roads	3	271
4165	do.: do	3	271
4166	do.: Expropriation of tunnel servitudes in respect of the Gautrain Rapid Rail Link Project between Park Station (Johannesburg) and Marlboro	4	271

GENERAL NOTICES

NOTICE 4164 OF 2007

AMENDMENT OF NOTICE 2626 OF 2003 IN PROVINCIAL GAZETTE EXTRAORDINARY, 20 AUGUST 2003 IN RESPECT OF THE ACCEPTANCE OF PRELIMINARY DESIGNS OF PROVINCIAL ROADS

The MEC for Public Transport, Roads and Works hereby amends Notice 2626 of 2003 in Provincial Gazette Extraordinary, 20 August 2003 by the omission of the preliminary design of provincial road K109 at km 3,205 in the south up to the position where it joins the preliminary design alignment of Road K111 at km 2,120 plan number PRS 81/30/3Bp in Report Book 1129.

The new alignment replaces the approved planning of K109 from km. 3,205 as indicated on plan number PRS 81/112/3Bp – PRS 81/112/8Bp in Report Book 1131, in the schedule accompanying the aforementioned notice.

REFERENCE: 2/1/1/2/3/1- K109 (2)

EXECUTIVE COUNCIL RESOLUTION: 003 OF 17 SEPTEMBER 2007

NOTICE 4165 OF 2007

AMENDMENT OF NOTICE 2626 OF 2003 IN PROVINCIAL GAZETTE EXTRAORDINARY, 20 AUGUST 2003 IN RESPECT OF ACCEPTANCE OF PRELIMINARY DESIGNS OF PROVINCIAL ROADS

The MEC for Public Transport, Roads and Works hereby amends Notice 2626 of 2003 in Provincial Gazette Extraordinary, 20 August 2003 by the omission of the preliminary design of provincial road K111 from km. 2,120 as indicated on plan PRS 81/30/3Bp, Report Book no.1129 up to km 7, 3 on plan number PRS 81/30/6Bp and 6Ply indicated in Report Book 1876.

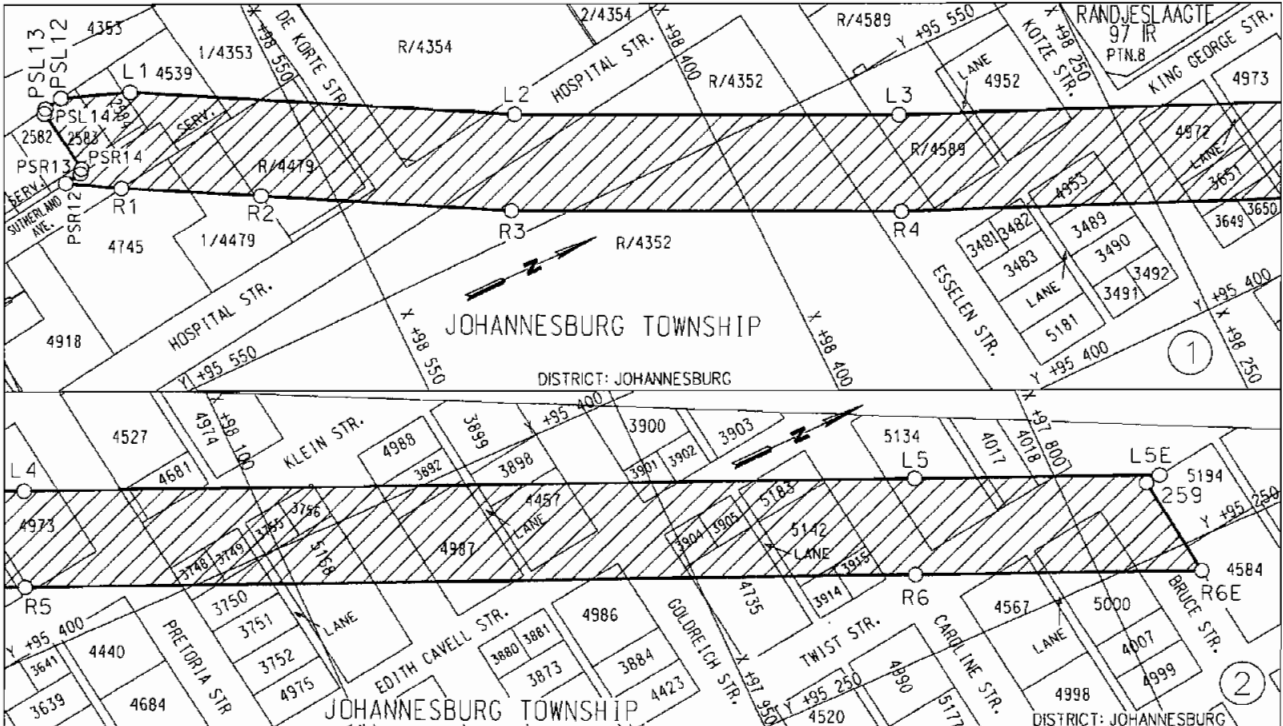
REFERENCE: 2/1/1/2/3/1- K111 (2)

EXECUTIVE COUNCIL RESOLUTION: 003 OF 17 SEPTEMBER 2007

NOTICE 4166 OF 2007**AMENDMENT OF NOTICE 3826 IN THE PROVINCIAL GAZETTE EXTRAORDINARY NO. 248 OF 4 SEPTEMBER 2007 WITH REGARD TO THE EXPROPRIATION OF TUNNEL SERVITUDES IN RESPECT OF THE GAUTRAIN RAPID RAIL LINK PROJECT BETWEEN PARK STATION (JOHANNESBURG) AND MARLBORO**

It is notified for general information that the Member of the Executive Council of the Province of Gauteng responsible for provincial roads, hereby amends Notice 3826 in the Provincial Gazette Extraordinary No 248 of 4 September 2007, by the substitution of the accompanying sketches and wording thereof.

Reference: 2/1/7/8-Gautrain



VERWYSINGS / REFERENCE

ONTEIENDE SPOORLYN TONNELSERWITUTE
EXPROPRIATED RAILWAY LINE TUNNEL SERVITUDES



DIE FIGUUR : PSL14-PSL12, L1-L5, L5E, 259, R6E, R6-R1, PSR12-PSR14, PSL14.
THE FIGURE : PSL14-PSL12, L1-L5, L5E, 259, R6E, R6-R1, PSR12-PSR14, PSL14.

VERTEENWOORDIG DIE ONTEIENING VAN DIE BETROKKE GEDEELTE VAN DIE SPOORLYN TONNELSERWITUTE OOR DIE VOLGENDE STANDPLASE, 2583, 2584, 4539, GED 1 VAN 4353, 4745, GED 1 VAN 4479, REST. VAN 4479, GED 6 VAN 4354, REST. VAN 4354, REST. VAN 4352, REST. VAN 4589, 4952, 3482, 4953, 3489, 4972, 3651, 3649, 4973, 4681, 3748, 3749, 3750, 3755, 3756, 5168, 3892, 4987, 3898, 4457, 4986, 3901, 3904, 3905, 4735, 5183, 5142, 3914, 3915, 5134, 4567, 4017, 4018, 5000 EN GEDEELTES VAN SUTHERLAND LAAN, DE KORTE STRAAT, HOSPITAL STRAAT, ESSELEN STRAAT, KING GEORGE STRAAT, KOTZE STRAAT, KLEIN STRAAT, PRETORIA STRAAT, VAN DER MERWE STRAAT, GOLDRICH STRAAT, CAROLLINE STRAAT EN BRUCE STRAAT IN JOHANNESBURG SOOS BEDOEL BY DIE AFKONDIGING DAARVAN IN DIE PROVINSIALE KOERANT EN IN DETAIL GETOON OP PLAN GRP 03/38/01Exp.

REPRESENTS THE EXPROPRIATION OF THE PORTION CONCERNED OF THE RAILWAY LINE TUNNEL SERVITUDES OVER THE FOLLOWING STANDS, 2583, 2584, 4539, PTN 1 OF 4353, 4745, GED 1 OF 4479, REM. OF 4479, PTN 6 OF 4354, REM. OF 4354, REM. OF 4352, REM. OF 4589, 4952, 3482, 4953, 3489, 4972, 3651, 3649, 4973, 4681, 3748, 3749, 3750, 3755, 3756, 5168, 3892, 4987, 3898, 4457, 4986, 3901, 3904, 3905, 4735, 5183, 5142, 3914, 3915, 5134, 4567, 4017, 4018, 5000 AND PORTIONS OF SUTHERLAND AVENUE, DE KORTE STREET, HOSPITAL STREET, ESSELEN STREET, KING GEORGE STREET, KOTZE STREET, KLEIN STREET, PRETORIA STREET, VAN DER MERWE STREET, GOLDRICH STREET, CAROLLINE STREET AND BRUCE STREET IN JOHANNESBURG AS INTENDED BY THE PUBLICATION THEREOF IN THE PROVINCIAL GAZETTE AND SHOWN IN DETAIL ON PLAN GRP 03/38/01Exp.

BUNDEL NR. / FILE NO. 2/1/6/1

KOÖRDINATE LYS/CO-ORDINATE LIST WG 29° KONST./CONST. Y= +/- 0.000 X= +2 800 000.000

L1	+95672.304	+98605.474	R2	+95610.678	+98576.710	PSL12	+95682.341	+98631.954
L2	+95595.882	+98468.590	R3	+95560.494	+98487.020	PSL13	+95681.194	+98639.495
L3	+95527.863	+98328.249	R4	+95491.495	+98344.663	PSL14	+95679.482	+98640.778
L4	+95464.295	+98184.085	R5	+95427.603	+98200.015	PSR12	+95649.667	+98645.525
L5	+95320.096	+97851.940	R6	+95283.404	+97867.870	PSR13	+95650.622	+98638.415
L5E	+95280.482	+97760.694	R6E	+95237.112	+97761.241	PSR14	+95652.309	+98637.128
R1	+95637.928	+98625.925	259	+95279.647	+97766.933			

DIE FIGUUR : L100, L101, L102, L103, L104, L105, L106, L107, L200, R200, R107, R106, R105,
 THE FIGURE : R104, R103, R102, R101, R100, 10498D, L100

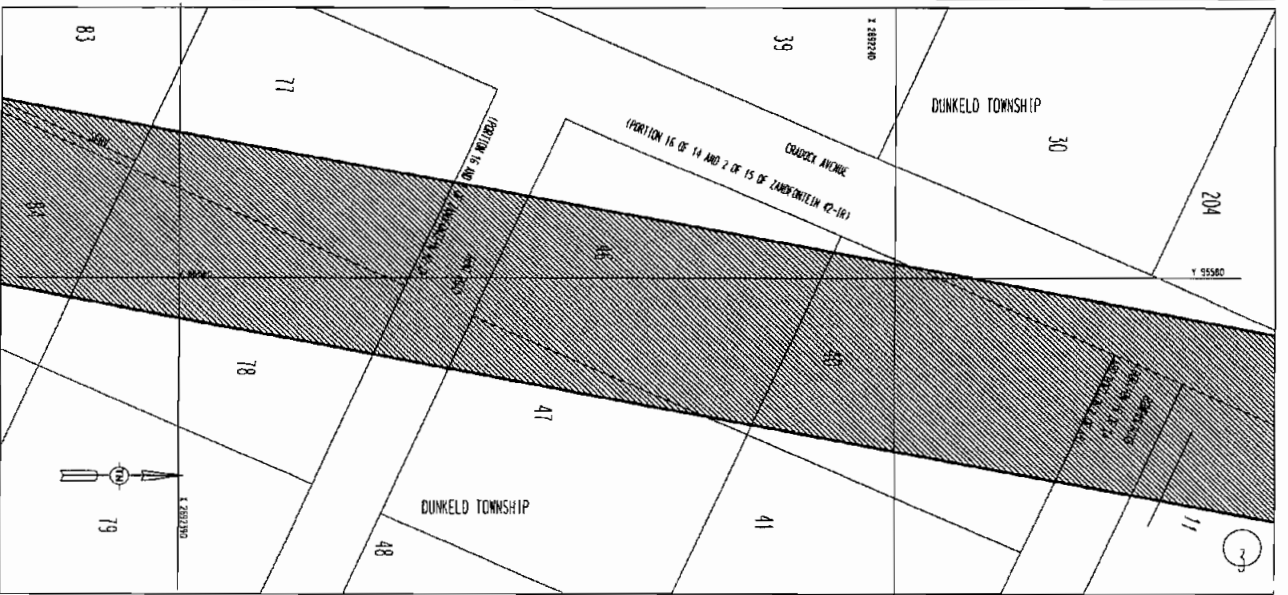
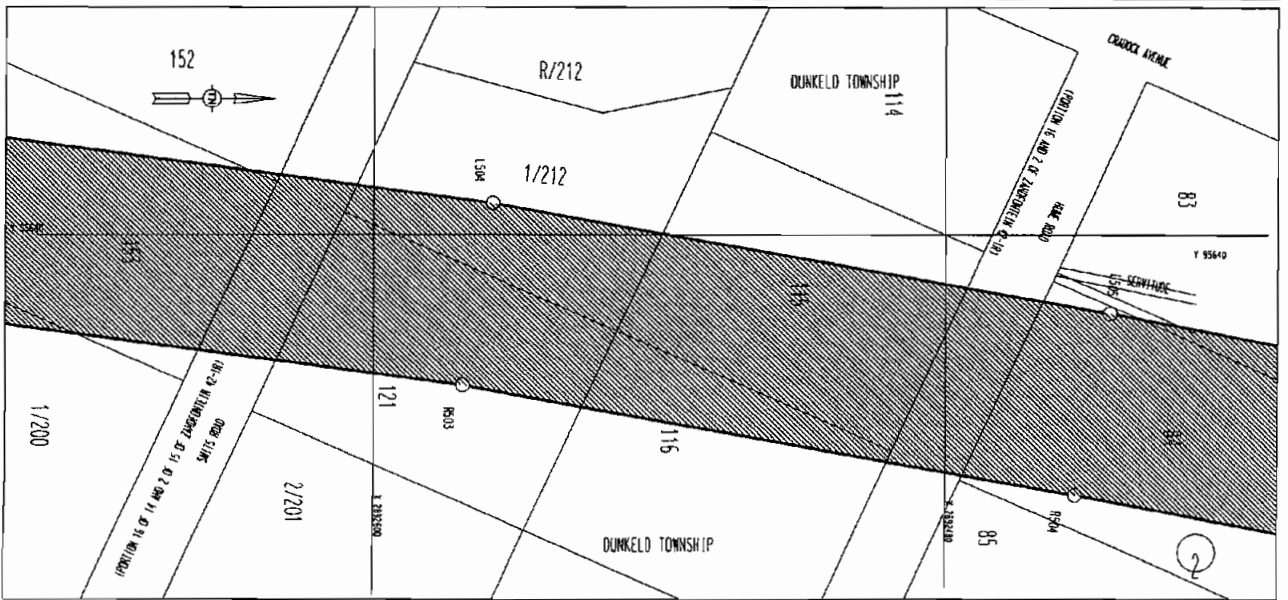
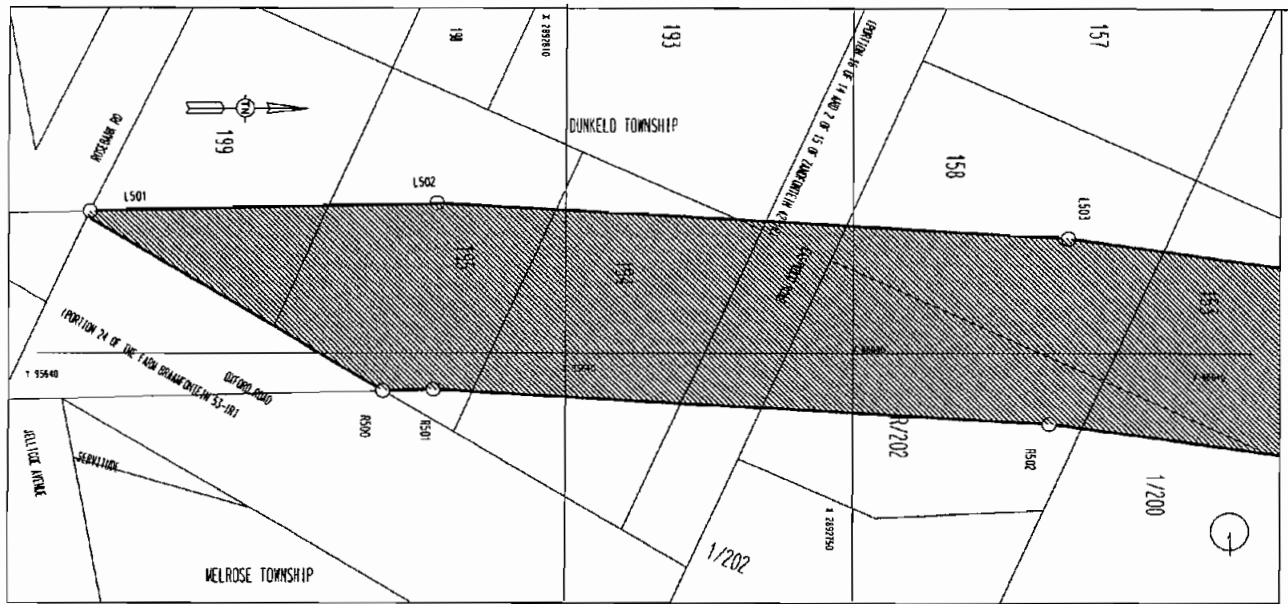
VERTEENWOORDIG DIE ONTEIENING VAN DIE BETROKKE GEDEELTE VAN DIE SPOORLYN TONNELSERWITUTE OOR ERWE 5194, 4584, 4026, 4027, 5001, 5011, 5008, 4098, 5010, 4092, 4091, 4643, 4103, 4700, 4723, 5014, 4569, 4139, 4138, 5170, 4742 EN 4143, DIE RESTANT VAN ERWE 4370 EN 4144, GEDEELTES VAN STEEG, JAGER STRAAT, QUARTZ STRAAT, PAUL NEL STRAAT, YETTAH STRAAT, CLAIM STRAAT, WILLIE STRAAT EN BANKET STRAAT IN JOHANNESBURG, DIE RESTANT VAN ERF 2327, GEDEELTE 2 VAN ERF 308, ERWE 2402, 2477 EN 313, GEDEELTE 1 VAN ERF 311, DIE RESTANT VAN ERF 311, ERWE 310, 2398 EN 2399, GEDEELTE 1 VAN ERF 116, EN N GEDEELTE VAN BOUNDARY WEG IN HOUGHTON LANDGOED, ERWE 859 EN 815, EN N GEDEELTE VAN CLARENDON PLACE IN PARKTOWN SOOS BEDOEL BY DIE AFKONDIGING DAARVAN IN DIE PROVINSIALE KOERANT EN IN DETAIL GETOON OP PLANNE GRP 03/38/01Exp en GRP 03/38/02Exp.

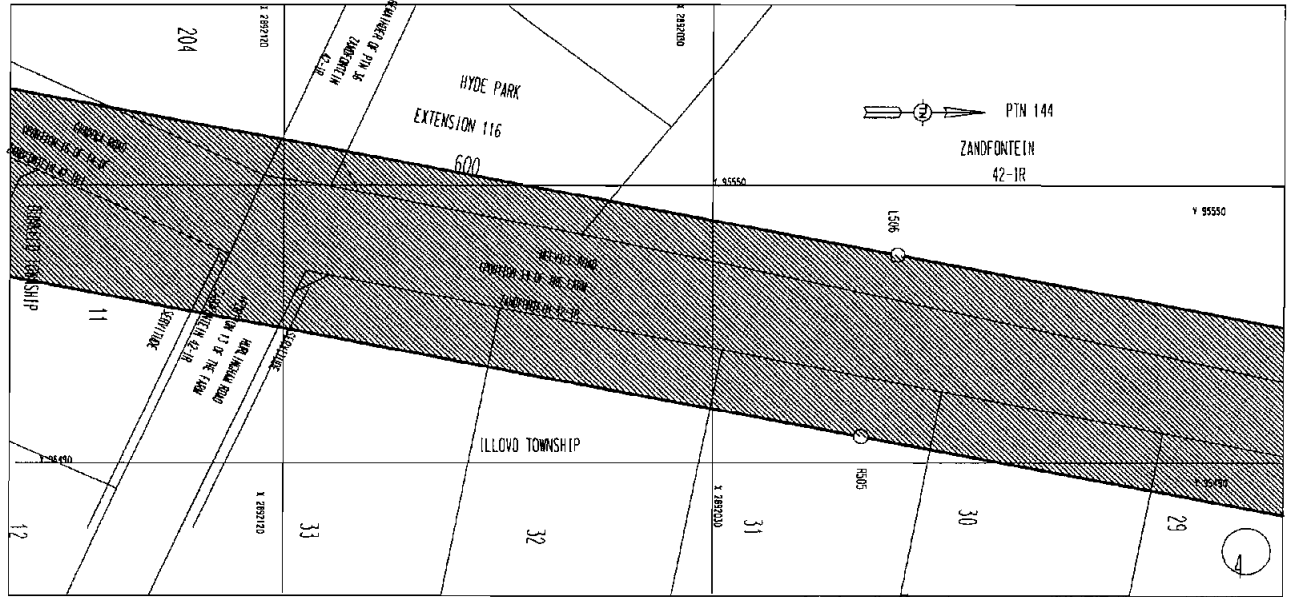
REPRESENTS THE EXPROPRIATION OF THE PORTION CONCERNED OF THE RAILWAY LINE TUNNEL SERVITUDES OVER ERVEN 5194, 4584, 4026, 4027, 5001, 5011, 5008, 4098, 5010, 4092, 4091, 4643, 4103, 4700, 4723, 5014, 4569, 4139, 4138, 5170, 4742 AND 4143, THE REMAINDER OF ERVEN 4370 AND 4144, PORTIONS OF ALLEYS, JAGER STREET, QUARTZ STREET, PAUL NEL STREET, YETTAH STREET, CLAIM STREET, WILLIE STREET AND BANKET STREET IN JOHANNESBURG, THE REMAINDER OF ERF 2327, PORTION 2 OF ERF 308, ERVEN 2402, 2477 AND 313, PORTION 1 OF ERF 311, THE REMAINDER OF ERF 311, ERVEN 310, 2398 AND 2399, PORTION 1 OF ERF 116 AND A PORTION OF BOUNDARY ROAD IN HOUGHTON ESTATE, ERVEN 859 AND 815, AND A PORTION OF CLARENDON PLACE IN PARKTOWN AS INTENDED BY THE PUBLICATION THEREOF IN THE PROVINCIAL GAZETTE AND SHOWN IN DETAIL ON PLANS GRP 03/38/01Exp and GRP 03/38/02Exp.

BUNDEL NR. / FILE NO. 2/1/6/1

KOORDINATE LYS/CO-ORDINATE LIST WG 29° KONST./CONST. Y=+/-0.00 X= +2 800 000.00

L100	+95280.409	+97760.527	L107	+94974.611	+96731.739	R105	+94963.852	+97009.178
L101	+95175.976	+97519.976	L200	+94975.090	+96680.826	R106	+94944.029	+96872.260
L102	+95121.962	+97393.390	R100	+95237.192	+97761.424	R107	+94934.628	+96732.897
L103	+95072.929	+97265.633	R101	+95139.284	+97535.906	R200	+94935.316	+96659.806
L104	+95032.994	+97135.100	R102	+95085.065	+97408.837	10498D	+95279.527	+97767.102
L105	+95003.193	+97001.945	R103	+95035.156	+97278.794			
L106	+94983.806	+96868.037	R104	+94994.323	+97145.327			





REFERENCE / VERWYSINGS

ONTEIENDE SPOORLYN TONNELSERWITUTE
EXPROPRIATED RAILWAY LINE TUNNEL SERVITUDES



DIE FIGUUR :
THE FIGURE : L501, L502 – L507, R506 – R500, L501

VERTEENWOORDIG DIE ONTEIENING VAN DIE BETROKKE GEDEELTE VAN DIE SPOORLYN TONNELSERWITUTE OOR ERWE 11,40,46,47,77,78,83,84,115,116,121,152,153,158,193,194,195,199 , GEDEELTE 1 VAN ERF 212 , GEDEELTE 1 VAN ERF 200,REstant VAN ERF 202 , DIE GEDEELTE VAN EASTWOOD WEG , SMITS WEG, HUME WEG , KENT WEG,BOMPAS WEG EN CRADDOCK WEG IN DUNKELD DORP ,GEDEELTE VAN FIRST EN THIRD WEG,REstant VAN GEDEELTE 36, GEDEELTE 144 VAN DIE PLAAS ZANDFONTEIN 42-IR,ERWE 21-33,MELVILLE WEG, CHAPLIN WEG EN HURGILINGHAM WEG VAN ILLOVO DORP, ERF 600 IN HYDE PARK UITBREIDING 116,ERWE 380 EN 382 IN HYDE PARK UITBREIDING 80 DORP, ERF 147 EN THIRD WEG IN HYDE PARK UITBREIDING 8 DORP, ERWE 447-451 EN THIRD WEG IN HYDE PARK UITBREIDING 103 DORP SOOS AANGETOON.

REPRESENTS THE EXPROPRIATION OF THE PORTION CONCERNED OF THE RAILWAY LINE TUNNEL SERVITUDES OVER ERVEN 11, 40,46,47,77,78,83,84,115,116,121,152,153,158,193,194,195,199,PORTION 1 OF ERF 212, PORTION 1 OFERF 200,A REMAINDER OF ERF 202 AND A PORTION OF EASTWOOD ROAD,HUME ROAD,SMITS ROAD ,KENT ROAD , BOMPAS ROAD AND CRADOCK ROAD IN DUNKELD TOWNSHIP , ERVEN 21-33,MELVILL ROAD, CHAPLIN ROAD AND HURLINGHAM ROAD OVER ILLOVO TOWNSHIP FIRST ROAD , THIRD ROAD AND REMAINDER OF PORTION 36 ,PORTION 144 OF THE FARM ZANDFONTEIN 42-IR , ERF 600 IN HYDE PARK EXTENSION 116 TOWNSHIP ,ERVEN 380 AND 382 IN HYDE PARK EXTENSION 80 TOWNSHIP , ERF 147 AND THIRD ROAD IN HYDE PARK EXTENSION 8 TOWNSHIP, ERVEN 447-451 AND THIRD STREET IN HYDE PARK EXTENSION 103 TOWNSHIP AS INDICATED.

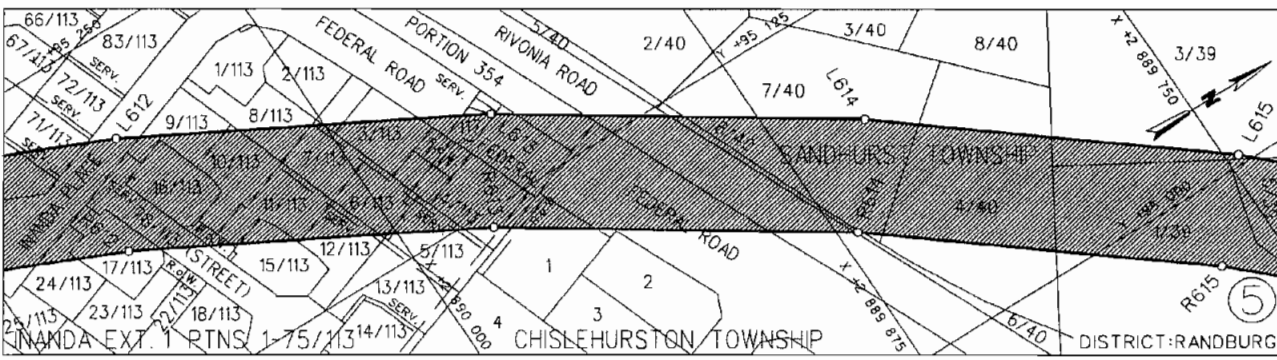
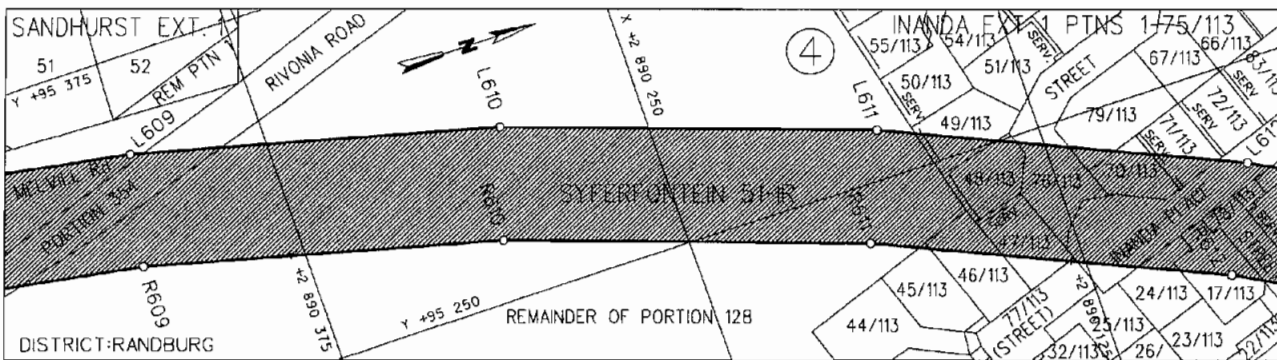
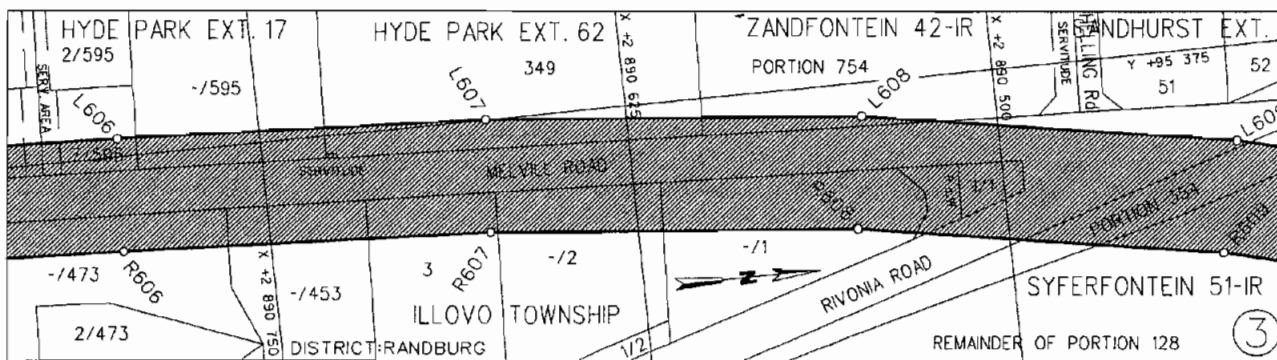
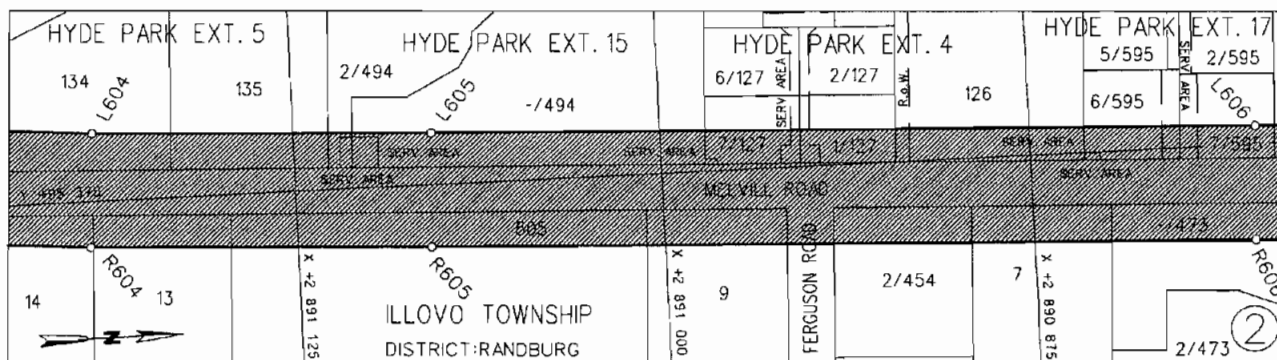
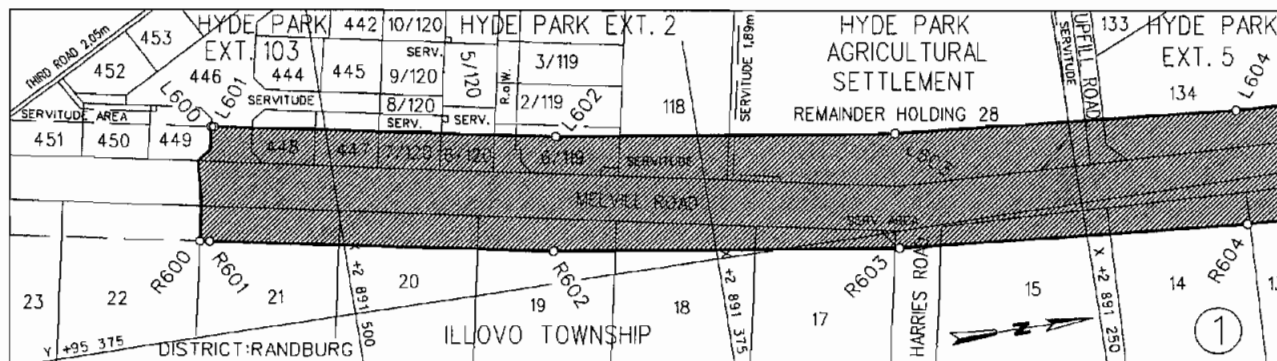
BUNDEL nr./FILE no. 2/1/6/1

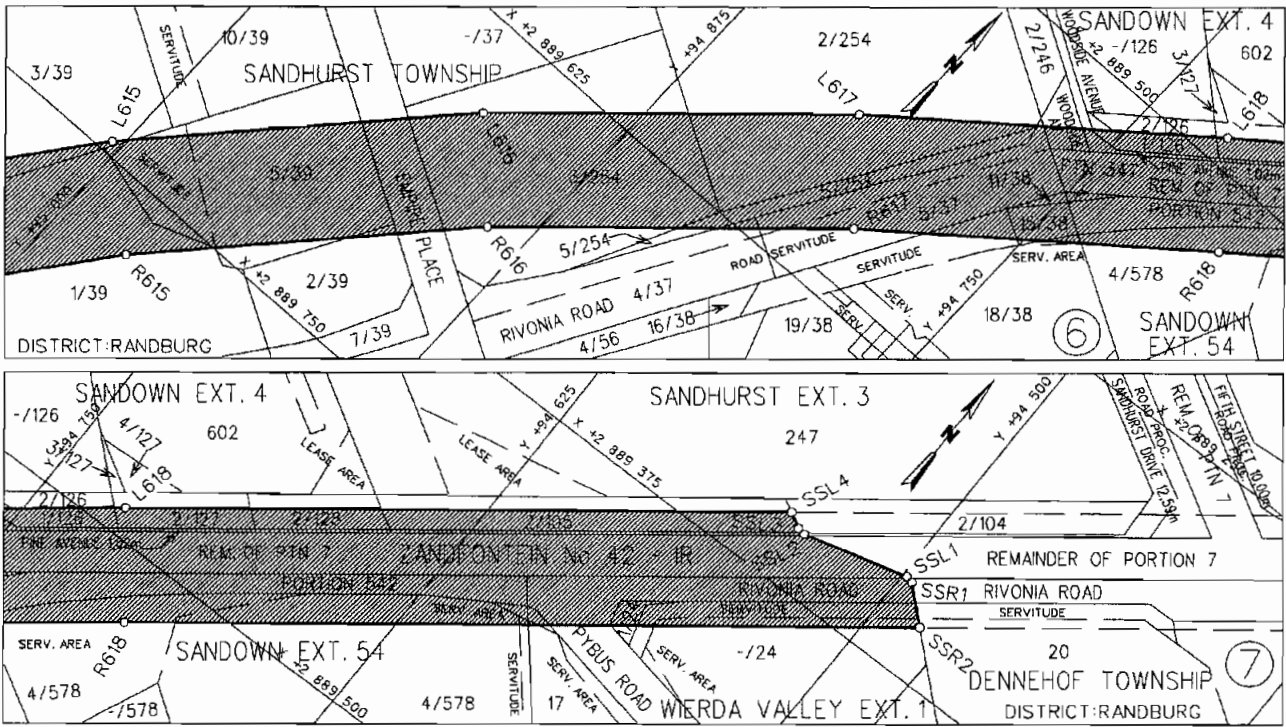
KOORDINATE LYS / CO-ORDINATE LIST WG 29' KONST./CONST.Y=+0.00

X=+2 800 000.00

L501	+ 95670.527	+ 92 910.105
L502	+ 95672.310	+ 92 837.560
L503	+ 95664.750	+ 92 705.110
L504	+ 95647.000	+ 92 575.000
L505	+ 95623.060	+ 92 445.640
L506	+ 95535.120	+ 91 990.970
L507	+ 95447.151	+ 91 536.820
R500	+ 95631.901	+ 92 854.447

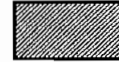
R501	+ 95632.300	+ 92 838.200
R502	+ 95624.920	+ 92 708.970
R503	+ 95607.480	+ 92 581.350
R504	+ 95583.700	+ 92 452.920
R505	+ 95495.820	+ 91 998.570
R506	+ 95407.940	+ 91 544.190





REFERENCE / VERWYSINGS

ONEIENDE SPOORLYN TONNELSERWITUTE
EXPROPRIATED RAILWAY LINE TUNNEL SERVITUDES



DIE FIGUUR 600 - L618, SSL4 - SSL1, SSR1 - SSR2, R618 - R600, L600.
THE FIGURE

VERTEENWOORDIG DIE ONTEIENING VAN DIE BETROKKE GEDEELTE VAN DIE SPOORLYN TONNELSERWITUTE OOR 'N GEDEELTE VAN MELVILLWEG, LOTTE 21-17, 'N GEDEELTE VAN HARRIESWEG, LOTTE 15-13, 505, 9, 'N GEDEELTE VAN FERGUSONWEG, GEDEELTE 2 VAN LOT 454, LOT 7, DIE RESTANTE VAN LOTTE 473, 453, 2, 1, LOT 3 EN 'N GEDEELTE VAN RIVONIAWEG IN ILLOVO, ERWE 446, 448 EN 447 IN HYDEPARK UITBREIDING 103, GEDEELTES 7, 6 VAN ERF 120, GEDEELTE 6 VAN ERF 119 EN ERF 118 IN HYDEPARK UITBREIDING 2, DIE RESTANT VAN HOEWE 28 IN HYDEPARK LANDBOU NEDERSETTING, 'N GEDEELTE VAN UPFILLWEG, ERWE 134 EN 135 IN HYDEPARK UITBREIDING 5, GEDEELTE 2 EN DIE RESTANT VAN ERF 494 IN HYDEPARK UITBREIDING 15, GEDEELTES 7, 1 VAN ERF 127 EN ERF 126 IN HYDEPARK UITBREIDING 4, GEDEELTES 6, 7 EN DIE RESTANT VAN ERF 595 IN HYDEPARK UITBREIDING 17, ERF 349 IN HYDEPARK UITBREIDING 62, GEDEELTE 754 VAN DIE PLAAS ZANDFONTEIN 42-IR, GEDEELTE 354 EN DIE RESTANT VAN GEDEELTE 128 VAN DIE PLAAS SYFERFONTEIN 51-IR, GEDEELTES 49-46, 76, 79, 70, 71, 77, 24, 17, 78, 9, 16, 10, 11, 15, 12, 8-3 VAN ERF 113 GEDEELTES VAN INANDA PLACE EN FEDERALWEG IN INANDA UITBREIDING 1 GEDEELTES 1-75 VAN ERF 113, ERF 1 EN 'N GEDEELTE VAN FEDERALWEG IN CHISLEHURSTON, 'N GEDEELTE VAN RIVONIAWEG, GEDEELTES 6, 7, 4 VAN LOT 40, GEDEELTES 1, 3, 5, 2 VAN LOT 39, 'N GEDEELTE VAN EMPIRE PLACE, GEDEELTES 3, 2, 5 VAN LOT 254, GEDEELTES 4, 5 VAN LOT 37, GEDEELTES 11, 15 EN 18 VAN LOT 38 IN SANDHURST, WOODSIDELAAN, GEDEELTE 1 VAN ERF 126, GEDEELTE 2 VAN ERF 127, GEDEELTE 2 VAN ERF 128 EN 'N GEDEELTE VAN PINELAAN IN SANDOWN UITBREIDING 4, GEDEELTE 2 VAN ERF 105 EN 'N GEDEELTE VAN PINELAAN IN SANDOWN UITBREIDING 3, GEDEELTES 349, 542 EN DIE RESTANT VAN GEDEELTE 7 VAN DIE PLAAS ZANDFONTEIN 42-IR, GEDEELTE 4 VAN ERF 578 IN SANDOWN UITBREIDING 54, ERF 17, GEDEELTES VAN PYBUSWEG, RIVONIAWEG, GEDEELTE 1 EN DIE RESTANT VAN ERF 24 IN WIERDA VALLEY UITBREIDING 1 SOOS BEDOEL BY DIE AFKONDIGING DAARVAN IN DIE PROVINSIALE KOERANT EN IN DETAIL GETOON OP PLANNE GRP03/38/05Exp-06Exp.

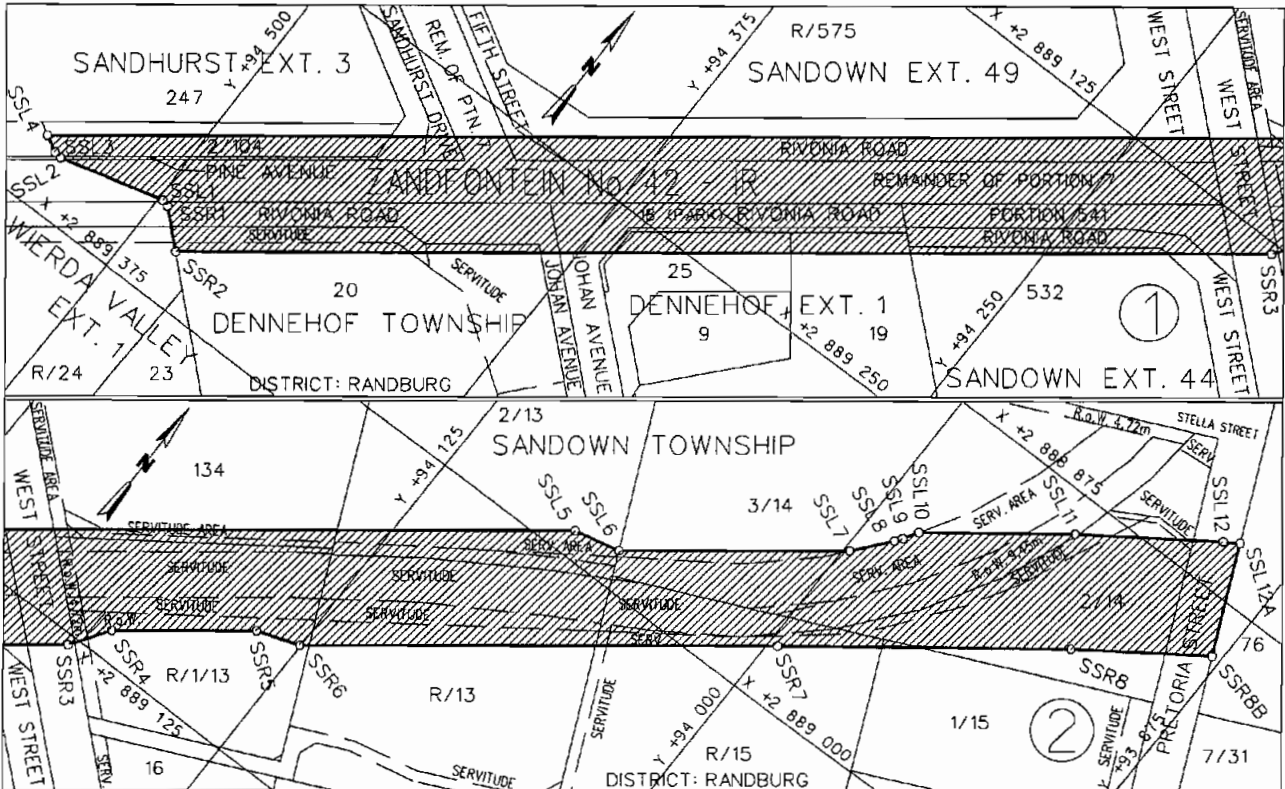
REPRESENTS THE EXPROPRIATION OF THE PORTION CONCERNED OF THE RAILWAY LINE TUNNEL SERVITUDES OVER A PORTION OF MELVILL ROAD, LOTS 21-17, A PORTION OF HARRIES ROAD, LOTS 15-13, 505, 9, A PORTION OF FERGUSON ROAD, PORTION 2 OF LOT 454, LOT 7, THE REMAINDERS OF LOTS 473, 453, 2, 1, LOT 3 AND A PORTION OF RIVONIA ROAD IN ILLOVO, ERVEN 446, 448 AND 447 IN ILLOVO, ERVEN 446, 448 AND 447 IN HYDE PARK EXTENSION 103, PORTIONS 7, 6 OF ERF 120, PORTION 6 OF ERF 119 AND ERF 118 IN HYDE PARK EXTENSION 2, THE REMAINDER OF HOLDING 28 IN HYDE PARK AGRICULTURAL SETTLEMENT, A PORTION OF UPFILL ROAD, ERVEN 134 AND 135 IN HYDE PARK EXTENSION 5, PORTION 2 AND THE REMAINDER OF ERF 494 IN HYDE PARK EXTENSION 15, PORTIONS 7, 1 OF ERF 127 AND ERF 126 IN HYDE PARK EXTENSION 4, PORTIONS 6, 7 AND THE REMAINDER OF ERF 595 IN HYDE PARK EXTENSION 17, ERF 349 IN HYDE PARK EXTENSION 62, PORTION 754 OF THE FARM

ZANDFONTEIN 42-IR, PORTION 354 AND THE REMAINDER OF PORTION 128 OF THE FARM SYFERFONTEIN 51-IR, PORTIONS 49-46, 76, 79, 70, 71, 77, 24, 17, 78, 9, 16, 10, 11, 15, 12, 8-3, OF ERF 113, PORTIONS OF INANDA PLACE AND FEDERAL ROAD IN INANDA EXTENSION 1 PORTIONS 1-75 OF ERF 113, ERF 1 AND A PORTION OF FEDERAL ROAD IN CHISLEHURSTON, A PORTION OF RIVONIA ROAD, PORTIONS 6, 7, 4, OF LOT 40, PORTIONS 1, 3, 5, 2 OF LOT 39, A PORTION OF EMPIRE PLACE, PORTIONS 3, 2, 5 OF LOT 254, PORTIONS 4, 5 OF LOT 37, PORTIONS 11, 15 AND 18 OF LOT 38 IN SANDHURST, A PORTION OF WOODSIDE AVENUE, PORTION 1 OF ERF 126, PORTION 2 OF ERF 127, PORTION 2 OF ERF 128, AND A PORTION OF PINE AVENUE IN SANDOWN EXTENSION 4, PORTION 2 OF ERF 105 AND A PORTION OF PINE AVENUE IN SANDOWN EXTENSION 3, PORTIONS 347, 542 AND THE REMAINDER OF PORTION 7 OF THE FARM ZANDFONTEIN 42-IR, PORTION 4 OF ERF 578 IN SANDOWN EXTENSION 54, ERF 17, PORTIONS OF PYBUS ROAD, RIVONIA ROAD, PORTION 1 AND THE REMAINDER OF ERF 24 IN WIERDA VALLEY EXTENSION 1 AS INTENDED BY THE PUBLICATION THEREOF IN THE PROVINCIAL GAZETTE AND SHOWN IN DETAIL ON PLANS GRP03/38/05Exp-06Exp.

BUNDEL NR. / FILE NO. 2/1/6/1

KOÖRDINATE LYS/CO-ORDINATE LIST WG 29° KONST./CONST. Y= +/- 0.00 X= +2 800 000.00

L600	+95447.329	+91538.308	L615	+95003.420	+89745.553	R610	+95271.325	+90309.719
L601	+95447.156	+91537.415	L616	+94916.376	+89653.523	R611	+95229.958	+90192.465
L602	+95425.768	+91422.813	L617	+94821.080	+89568.191	R612	+95179.517	+90080.128
L603	+95408.903	+91309.123	L618	+94722.616	+89490.400	R613	+95119.283	+89971.350
L604	+95398.912	+91193.562	R600	+95408.520	+91548.301	R614	+95050.637	+89868.877
L605	+95393.262	+91078.023	R601	+95407.884	+91545.015	R615	+94973.239	+89771.804
L606	+95381.465	+90798.564	R602	+95386.383	+91429.802	R616	+94888.556	+89682.125
L607	+95375.226	+90673.060	R603	+95369.176	+91313.788	R617	+94795.671	+89599.084
L608	+95363.262	+90546.142	R604	+95358.979	+91195.866	R618	+94698.160	+89522.052
L609	+95341.389	+90420.171						
L610	+95309.668	+90297.978	R605	+95353.298	+91079.711	SSL1	+94498.425	+89345.371
L611	+95267.179	+90177.546	R606	+95341.501	+90800.252	SSL2	+94535.092	+89355.317
L612	+95215.369	+90062.165	R607	+95335.295	+90675.401	SSL3	+94537.840	+89354.962
L613	+95153.414	+89950.492	R608	+95323.599	+90551.321	SSL4	+94543.280	+89351.834
L614	+95082.912	+89845.249	R609	+95302.302	+90428.667	SSR1	+94495.859	+89345.977
						SSR2	+94483.998	+89356.578



REFERENCE / VERWYSINGS

ONTEINDE SPOORLYN TONNELSERWITUTE
EXPROPRIATED RAILWAY LINE TUNNEL SERVITUDES



DIE FIGUUR :
THE FIGURE : SSL1 - SSL12, SSL12A, SSR8B, SSR8 - SSR1, SSL1.

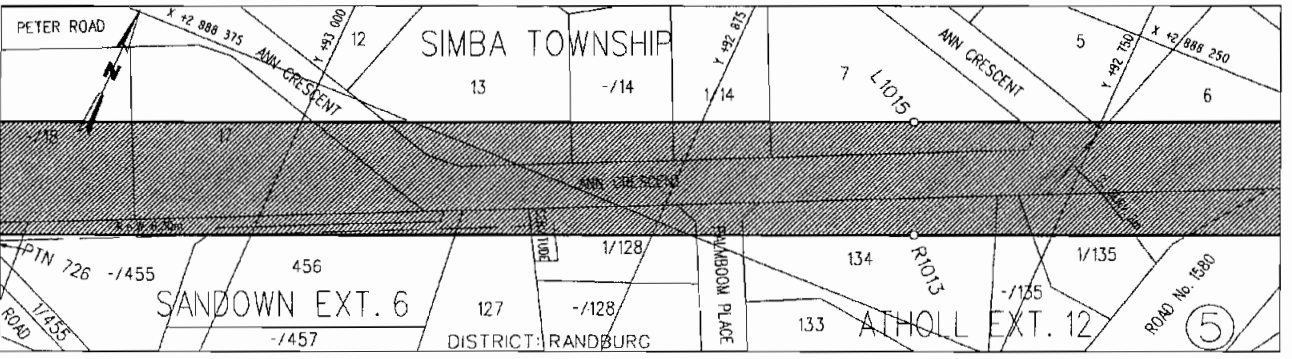
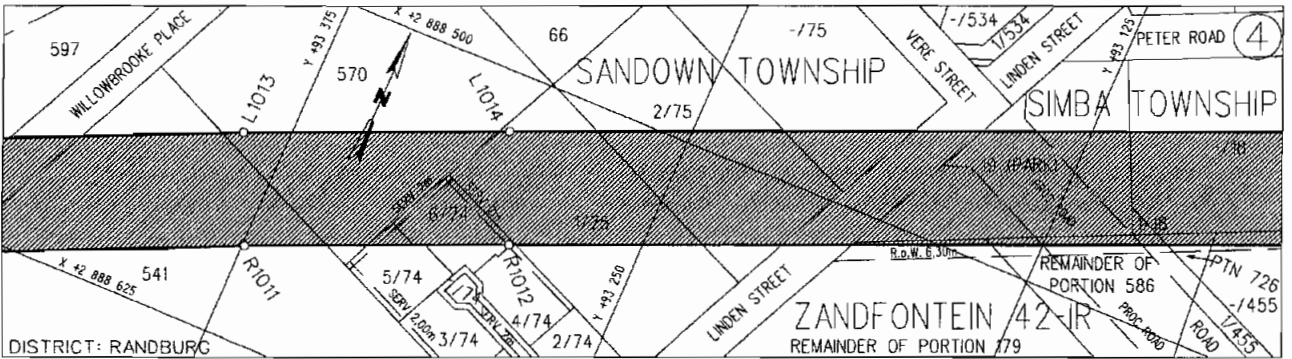
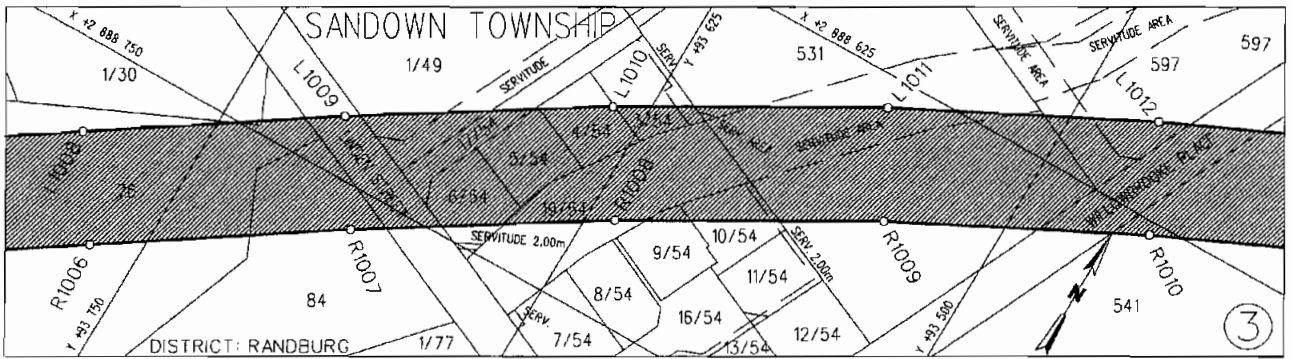
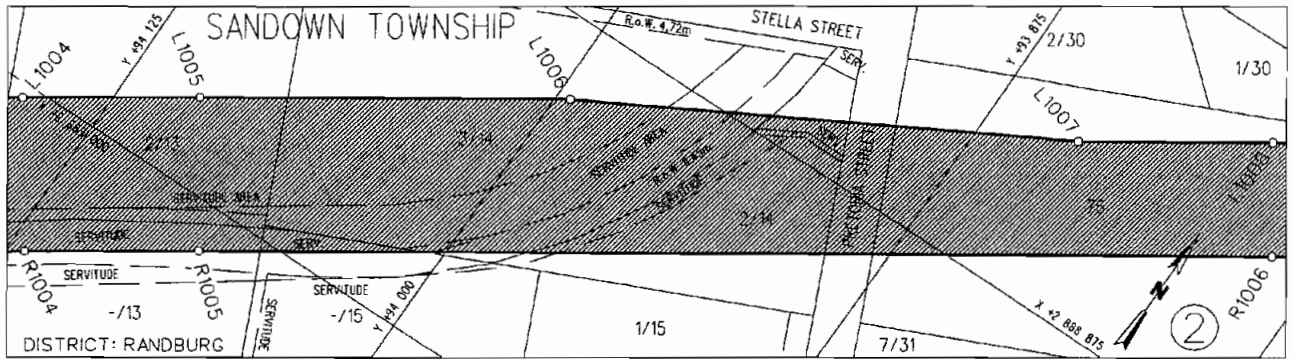
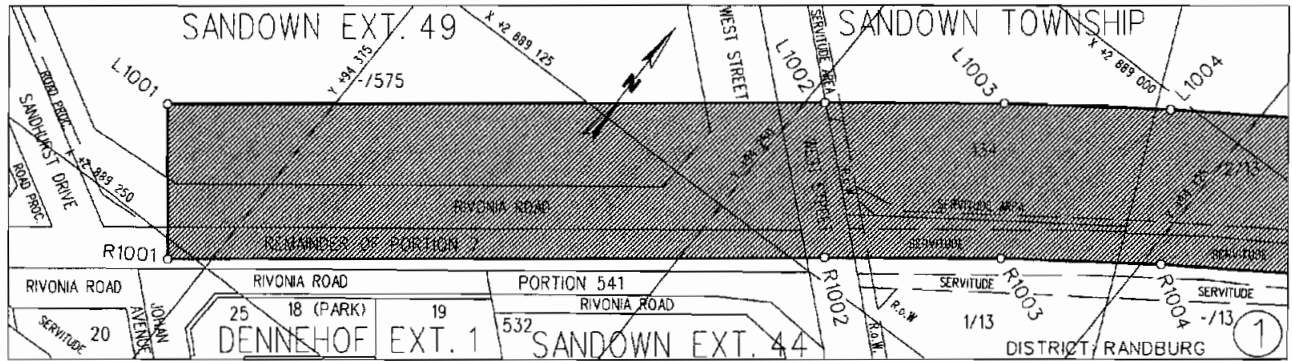
VERTEENWOORDIG DIE ONTEIENING VAN DIE BETROKKE GEDEELTE VAN DIE SPOORLYN TONNELSERWITUTE OOR GEDEELTE 2 VAN ERF 104, 'N GEDEELTE VAN PINELAAN IN SANDHURST UITBREIDING 3, ERF 20 EN 'N GEDEELTE VAN RIVONIAWEG IN DENNEHOF, GEDEELTE 541 EN DIE RESTANT VAN GEDEELTE 7 VAN DIE PLAAS ZANDFONTEIN 42-IR, GEDEELTES VAN VYFDE STRAAT, RIVONIAWEG EN WESTSTRAAT IN SANDOWN UITBREIDING 49, ERWE 18, 19, EN 25, GEDEELTES VAN JOHANLAAN EN RIVONIAWEG IN DENNEHOF UITBREIDING 1, ERF 532, GEDEELTES VAN RIVONIAWEG EN WESTSTRAAT IN SANDOWN UITBREIDING 44, ERF 134, GEDEELTE 2 VAN ERF 13, GEDEELTE 3 VAN ERF 14, GEDEELTE 2 VAN ERF 14, DIE RESTANT VAN GEDEELTE 1 VAN ERF 13, DIE RESTANT VAN ERF 13, ERF 15, GEDEELTE 1 VAN ERF 15 EN GEDEELTES VAN WESTSTRAAT EN PRETORIASTRAAT IN SANDOWN SOOS BEDOEL BY DIE AFKONDIGING DAARVAN IN DIE PROVINSIALE KOERANT EN IN DETAIL GETOON OP PLAN GRP 03/38/06AExp.

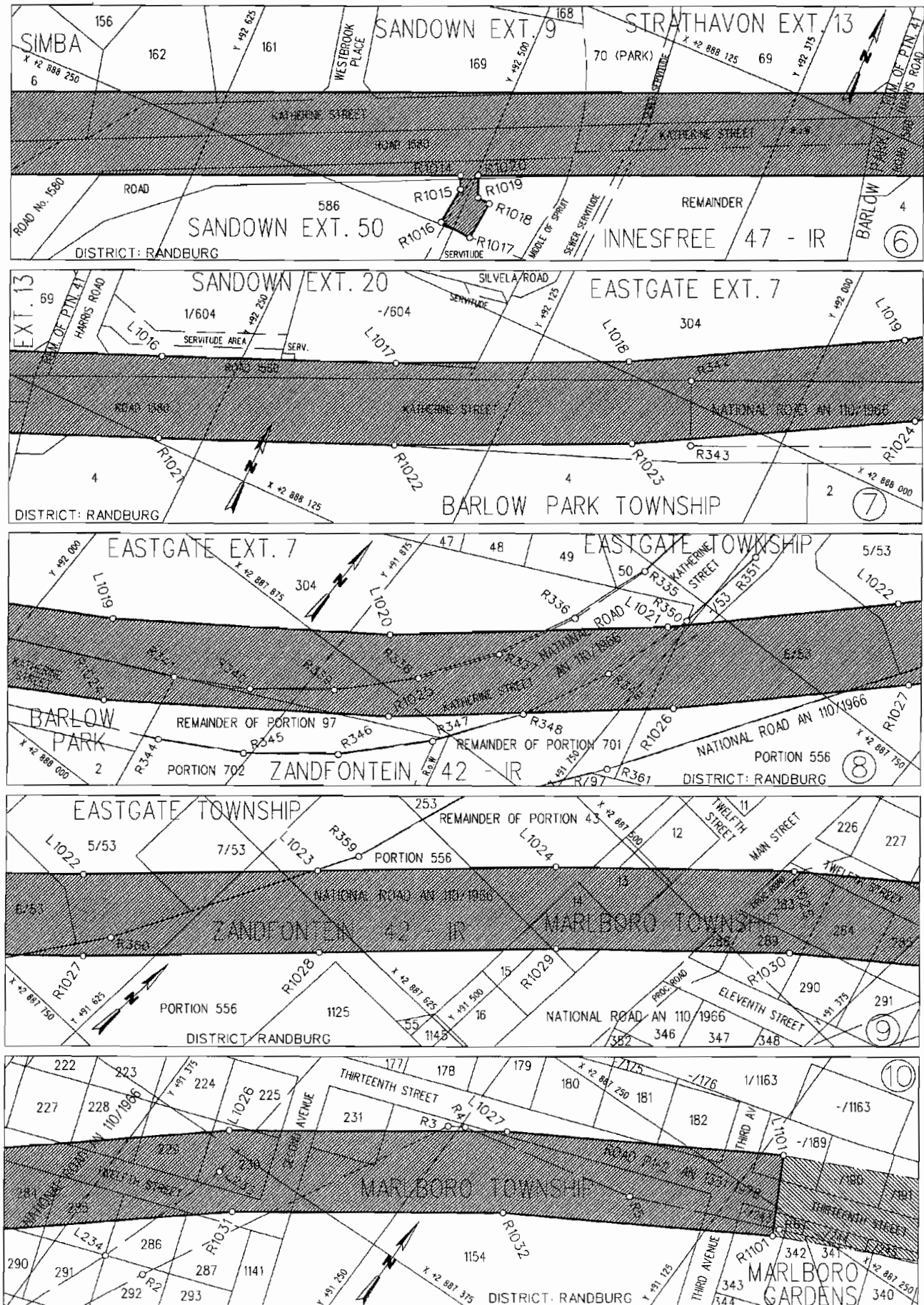
REPRESENTS THE EXPROPRIATION OF THE PORTION CONCERNED OF THE RAILWAY LINE TUNNEL SERVITUDES OVER PORTION 2 OF ERF 104, A PORTION OF PINE AVENUE IN SANDHURST EXTENSION 3, ERF 20 AND A PORTION OF RIVONIA ROAD IN DENNEHOF, PORTION 541 AND THE REMAINDER OF PORTION 7 OF THE FARM ZANDFONTEIN 42-IR, PORTIONS OF FIFTH STREET, RIVONIA ROAD, AND WEST STREET IN SANDOWN EXTENSION 49, ERF 18, 19 AND 25, PORTIONS OF JOHAN AVENUE AND RIVONIA ROAD IN DENNEHOF EXTENSION 1, ERF 532, PORTIONS OF RIVONIA ROAD AND WEST STREET IN SANDOWN EXTENSION 44, ERF 134, PORTION 2 OF ERF 13, PORTION 3 OF ERF 14, PORTION 2 OF ERF 14, THE REMAINDER OF PORTION 1 OF ERF 13, THE REMAINDER OF ERF 13, ERF 15, PORTION 1 OF ERF 15, AND PORTIONS OF WEST STREET AND PRETORIA STREET IN SANDOWN AS INTENDED BY THE PUBLICATION THEREOF IN THE PROVINCIAL GAZETTE AND SHOWN IN DETAIL ON PLAN GRP 03/38/06AExp.

BUNDEL NR. / FILE NO. 2/1/6/1

KOÖRDINATE LYS/CO-ORDINATE LIST WG 29° KONST./CONST. Y= +/- 0.00 X= +2 800 000.00

SSL 1	+94498.425	+89345.371	SSL 9	+93986.696	+88925.109	SSR 3	+94188.617	+89128.356
SSL 2	+94535.092	+89355.317	SSL10	+93983.730	+88920.100	SSR 4	+94179.805	+89115.228
SSL 3	+94537.840	+89354.962	SSL11	+93941.101	+88887.827	SSR 5	+94140.239	+89084.658
SSL 4	+94543.280	+89351.834	SSL12	+93899.607	+88858.946	SSR 6	+94125.312	+89079.444
SSL 5	+94076.031	+88990.818	SSL12A	+93894.783	+88855.866	SSR 7	+93996.904	+88980.230
SSL 6	+94059.887	+88987.188				SSR 8	+93917.709	+88920.275
SSL 7	+93998.033	+88939.407	SSR 1	+94495.859	+89345.977	SSR 8B	+93878.096	+88892.702
SSL 8	+93988.406	+88927.564	SSR 2	+94483.998	+89356.578			





REFERENCE / VERWYSINGS

ONTEIENDE SPOORLYN TONNELSERWITUTE
EXPROPRIATED RAILWAY LINE TUNNEL SERVITUDE



DIE FIGUUR : L1001 - L1027, L1101, L1100A, R1100A, R1100B, R1101, R1032 - R1001, R1000A, L1000A, L1001.
THE FIGURE :

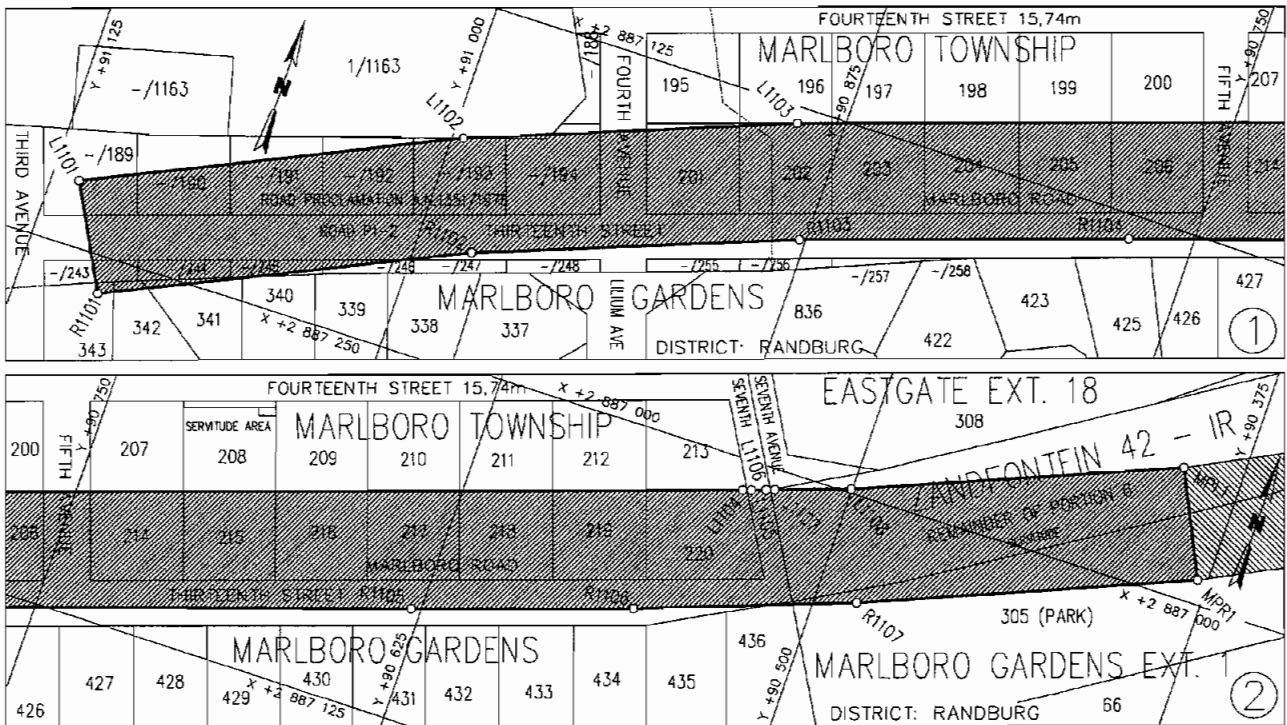
VERTEENWOORDIG DIE ONTEIENING VAN DIE BETROKKE GEDEELTE VAN DIE SPOORLYN TONNELSERWITUTE OOR DIE RESTANT VAN ERF 575, GEDEELTES VAN RIVONIAWEG EN WESTSTRAAT IN SANDOWN UITBREIDING 49, DIE RESTANT VAN GEDEELTE 7 VAN DIE PLAAS ZANDFONTEIN 42-IR, LOT 134, GEDEELTES 1, 2, DIE RESTANT VAN LOT 13, GEDEELTES 2, 3 VAN LOT 14, DIE RESTANT VAN LOT 15, LOTTE 76, 84, GEDEELTE 1 VAN LOT 30, GEDEELTE 1 VAN LOT 49, GEDEELTES 3-6, 9, 10, 17, 19 VAN LOT 54, LOTTE 531, 597, 541, 570, GEDEELTES 5, 6 VAN LOT 74, GEDEELTES 1, 2, DIE RESTANT VAN LOT 75, GEDEELTES VAN PRETORIASTRAAT, LINDENSTRAAT EN WILLOWBROOKLAAN IN SANDOWN, ERF 19 (PARK), DIE RESTANT VAN ERF 18, ERWE 17, 13, GEDEELTE 1, DIE RESTANT VAN ERF 14, ERWE 7-5 EN 'N GEDEELTE VAN ANN CRESCENT IN SIMBA, DIE RESTANTE VAN GEDEELTES 179, 586 EN GEDEELTE 726 VAN DIE PLAAS ZANDFONTEIN 42-IR, DIE RESTANT VAN ERF 455 EN ERF 456 IN SANDOWN UITBREIDING 6, ERF 127, GEDEELTE 1 VAN ERF 128, ERF 134, DIE RESTANT, GEDEELTE 1 VAN ERF 135, GEDEELTES VAN PALMBOOM PLACE EN KATHERINESTRAAT (PAD 1580) IN ATHOLL UITBREIDING 12, ERF 586 EN 'N GEDEELTE VAN KATHERINESTRAAT (PAD 1580) IN SANDOWN UITBREIDING 50, ERWE 162, 161, 169, GEDEELTES VAN KATHERINESTRAAT EN WESTBROOK PLACE IN SANDOWN UITBREIDING 9, ERF 70 (PARK), ERF 69 EN 'N GEDEELTE VAN KATHERINESTRAAT (PAD 1580) IN STRATHAVON UITBREIDING 13, DIE RESTANT VAN DIE PLAAS INNESFREE 47-IR, ERF 4 EN 'N GEDEELTE VAN KATHERINESTRAAT (PAD 1580) IN BARLOWPARK, GEDEELTE 1, DIE RESTANT VAN ERF 604 EN 'N GEDEELTE VAN KATHERINESTRAAT (PAD 1580) IN SANDOWN UITBREIDING 20, ERF 304 EN 'N GEDEELTE VAN KATHERINESTRAAT (PAD 1580) IN EASTGATE UITBREIDING 7, DIE RESTANTE VAN GEDEELTES 41, 97, 701, GEDEELTE 556 EN DIE RESTANT VAN GEDEELTE 43 VAN DIE PLAAS ZANDFONTEIN 42-IR, GEDEELTES 5-7 EN DIE RESTANT VAN ERF 53 IN EASTGATE, LOTTE 12-15, 288, 283, 289, 284, 290, 285, 286, 287, 227-230, 225, 231, 1154, 182, DIE RESTANTE VAN LOTTE 189, 243, GEDEELTES VAN MAINSTRAAT, TWAALFDE STRAAT, TWEEDELAAN, DERTIENDE STRAAT EN DERDELAAN IN MARLBORO. ERF 343 IN MARLBORO GARDENS SOOS BEDOEL BY DIE AFKONDIGING DAARVAN IN DIE PROVINSIALE KOERANT EN IN DETAIL GETOON OP PLANNE GRP 03/38/06A AND 07 - 08Exp.

REPRESENTS THE EXPROPRIATION OF THE PORTION CONCERNED OF THE RAILWAY LINE TUNNEL SERVITUDES OVER THE REMAINDER OF ERF 575, PORTIONS OF RINONIA ROAD AND WEST STREET IN SANDOWN EXTENSION 49, THE REMAINDER OF PORTION 7 OF THE FARM ZANDFONTEIN 42-IR, LOT 134, PORTIONS 1, 2, THE REMAINDER OF LOT 13, PORTIONS 2, 3, OF LOT 14, THE REMAINDER OF LOT 15, LOT 76, LOT 84, PORTION 1 OF LOT 30, PORTION 1 OF LOT 49, PORTIONS 3-6, 9, 10, 17, 19 OF LOT 54, LOTS 531, 597, 541, 570, PORTIONS 5, 6, OF LOT 74, PORTIONS 1, 2, THE REMAINDER OF LOT 75, PORTIONS OF PRETORIA STREET, LINDEN STREET AND WILLOWBROOK PLACE IN SANDOWN, ERF 19 (PARK), THE REMAINDER OF ERF 18, ERVEN 17, 13, PORTION 1, THE REMAINDER OF ERF 14, ERVEN 7-5 AND A PORTION OF ANN CRESCENT IN SIMBA, THE REMAINDERS OF PORTIONS 179, 586 AND PORTION 726 OF THE FARM ZANDFONTEIN 42-IR, THE REMAINDER OF ERF 455 AND ERF 456 IN SANDOWN EXTENSION 6, ERF 127, PORTION 1 OF ERF 128, ERF 134, PORTION 1, THE REMAINDER OF ERF 135, PORTIONS OF PALMBOOM PLACE AND KATHERINE STREET (ROAD 1580) IN ATHOLL EXTENSION 12, ERF 586 AND A PORTION OF KATHERINE STREET (ROAD 1580) IN SANDOWN EXTENSION 50, ERVEN 162, 161, 169, PORTIONS OF KATHERINE STREET AND WESTBROOKE PLACE IN SANDOWN EXTENSION 9, ERVEN 70 (PARK), 69 AND A PORTION OF KATHERINE STREET (ROAD 1580) IN STRATHAVON EXTENSION 13, THE REMAINDER OF THE FARM INNESFREE 47-IR, ERF 4 AND A PORTION OF KATHERINE STREET (ROAD 1580) IN BARLOW PARK, PORTION 1, THE REMAINDER OF ERF 604 AND A PORTION OF KATHERINE STREET (ROAD 1580) IN SANDOWN EXTENSION 20, ERF 304 AND A PORTION OF KATHERINE STREET IN EASTGATE EXTENSION 7, THE REMAINDERS OF PORTIONS 41, 701, PORTION 556 AND THE REMAINDER OF PORTION 43 OF THE FARM ZANDFONTEIN 42-IR, PORTIONS 5-7 AND THE REMAINDER OF ERF 53 IN EASTGATE, LOTS 12-15, 288, 283, 289, 284, 290, 285-287, 227-230, 225, 231, 1154, 182, THE REMAINDERS OF LOTS 189, 243, PORTIONS OF MAIN STREET, TWELFTH STREET, SECOND AVENUE, THIRTEENTH STREET AND THIRD AVENUE IN MARLBORO. ERF 343 IN MARLBORO GARDENS AS INTENDED BY THE PUBLICATION THEREOF IN THE PROVINCIAL GAZETTE AND SHOWN IN DETAIL ON PLANS GRP 03/38/06A AND 07 - 08Exp.

BUNDEL NR. / FILE NO. 2/1/6/1

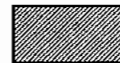
KOÖRDINATE LYS/CO-ORDINATE LIST WG 29° KONST./CONST. Y= +/- 0.00 X= +2 800 000.00

L1001	+94420.431	+89213.371	L1022	+91677.581	+87692.777	R1014	+92507.202	+88224.049
L1002	+94244.714	+89075.443	L1023	+91600.098	+87612.555	R1015	+92504.545	+88230.308
L1003	+94196.734	+89038.298	L1024	+91521.421	+87531.097	R1016	+92506.461	+88248.829
L1004	+94150.344	+89004.700	L1025	+91439.843	+87452.629	R1017	+92491.018	+88250.423
L1005	+94100.088	+88970.696	L1026	+91338.372	+87368.420	R1018	+92489.079	+88231.458
L1006	+93995.513	+88900.956	L1027	+91230.087	+87293.169	R1019	+92495.149	+88230.883
L1007	+93843.609	+88816.482	L1101	+91115.779	+87227.427	R1020	+92499.447	+88220.758
L1008	+93788.662	+88779.838				R1021	+92269.511	+88123.174
L1009	+93713.453	+88730.099	R1001	+94387.089	+89255.848	R1022	+92166.436	+88078.687
L1010	+93636.624	+88681.800	R1002	+94211.372	+89117.920	R1023	+92064.227	+88030.078
L1011	+93555.789	+88635.691	R1003	+94164.248	+89081.433	R1024	+91946.482	+87962.988
L1012	+93472.867	+88593.451	R1004	+94119.491	+89049.018	R1025	+91835.024	+87885.900
L1013	+93390.320	+88555.764	R1005	+94070.127	+89015.622	R1026	+91730.701	+87799.399
L1014	+93307.447	+88520.217	R1006	+93766.468	+88813.116	R1027	+91649.151	+87720.913
L1015	+92809.103	+88308.721	R1007	+93691.645	+88763.631	R1028	+91571.160	+87640.169
L1016	+92285.137	+88086.352	R1008	+93615.990	+88716.068	R1029	+91492.993	+87559.237
L1017	+92182.732	+88042.157	R1009	+93536.797	+88670.895	R1030	+91413.009	+87482.293
L1018	+92082.497	+87994.494	R1010	+93455.559	+88629.513	R1031	+91314.164	+87400.264
L1019	+91967.780	+87929.130	R1011	+93374.268	+88592.402	R1032	+91208.683	+87326.961
L1020	+91859.190	+87854.024	R1012	+93291.821	+88557.039	R1101	+91097.335	+87262.921
L1021	+91757.549	+87769.749	R1013	+92793.477	+88345.543			



REFERENCE / VERWYSINGS

ONEIENDE SPOORLYN TONNELSERWITUTE
EXPROPRIATED RAILWAY LINE TUNNEL SERVITUDES



DIE FIGUUR : L1101 - L1108, MPL1, MPR1, R1107 - R1101, L1101.
THE FIGURE : L1101 - L1108, MPL1, MPR1, R1107 - R1101, L1101.

VERTEENWOORDIG DIE ONTEIENING VAN DIE BETROKKE GEDEELTE VAN DIE SPOORLYN TONNELSERWITUTE OOR ERVEN 243-340 EN 436 IN MARLBORO GARDENS, DIE RESTANTE VAN LOTTE 243-246, 189-194, LOTTE 201-206, 214-220 GEDEELTES VAN DERTIENDE STRAAT, VIERDELAAN, VYFDELAAN EN SEWENDELAAN IN MARLBORO, DIE RESTANT VAN GEDEELTE 6 VAN DIE PLAAS ZANDFONTEIN 42-IR, ERF 305 IN MARLBORO GARDENS UITBREIDING 1 SOOS BEDOEL BY DIE AFKONDIGING DAARVAN IN DIE PROVINSIALE KOERANT EN IN DETAIL GETOON OP PLAN GRP 03/38/08Exp.

REPRESENTS THE EXPROPRIATION OF THE PORTION CONCERNED OF THE RAILWAY LINE TUNNEL SERVITUDES OVER ERVEN 243-340 AND 436 IN MARLBORO GARDENS, THE REMAINDERS OF LOTS 243-246, 189-194, LOTS 201-206, 214-220 PORTIONS OF THIRTEENTH STREET, FOURTH AVENUE, FIFTH AVENUE, AND SEVENTH AVENUE IN MARLBORO, THE REMAINDER OF PORTION 6 OF THE FARM ZANDFONTEIN 42 I-R, ERF 305 IN MARLBORO GARDENS EXTENSION 1 AS INTENDED BY THE PUBLICATION THEREOF IN THE PROVINCIAL GAZETTE AND SHOWN IN DETAIL ON PLAN GRP 03/38/08Exp.

BUNDEL NR. / FILE NO. 2/1/6/1

KOÖRDINATE LYS/CO-ORDINATE LIST WG 29 °KONST./CONST. Y= +/- 0.00 X= +2 800 000.00

L1101	+91115.779	+87227.427
L1102	+90996.274	+87171.688
L1103	+90890.706	+87130.810
L1104	+90535.379	+87010.728
L1105	+90532.540	+87009.757
L1106	+90527.808	+87008.120
L1107	+90524.971	+87007.143
L1108	+90500.329	+86998.687

R1101	+91097.335	+87262.921
R1102	+90980.931	+87208.607
R1103	+90877.187	+87169.175
R1104	+90771.549	+87133.400
R1105	+90628.365	+87085.881
R1106	+90557.126	+87061.915
R1107	+90485.885	+87035.987

MPL1	+90395.809	+86955.575
MPR1	+90378.523	+86991.647