

*THE PROVINCE OF  
GAUTENG*

*DIE PROVINSIE  
GAUTENG*

**Provincial Gazette Extraordinary  
Buitengewone Provinsiale Koerant**

**Vol. 13**

**PRETORIA, 20 NOVEMBER 2007**

**No. 332**

---

**CONTENTS • INHOUD**

No.	Page No.	Gazette No.
<b>GENERAL NOTICE</b>		
5243 Withdrawal of a sketch with regard to the expropriation of tunnel servitudes in respect of the Gautrain Rapid Rail Link Project between Park Station (Johannesburg) and Marlboro.....	2	332

---

---

**GENERAL NOTICE**

---

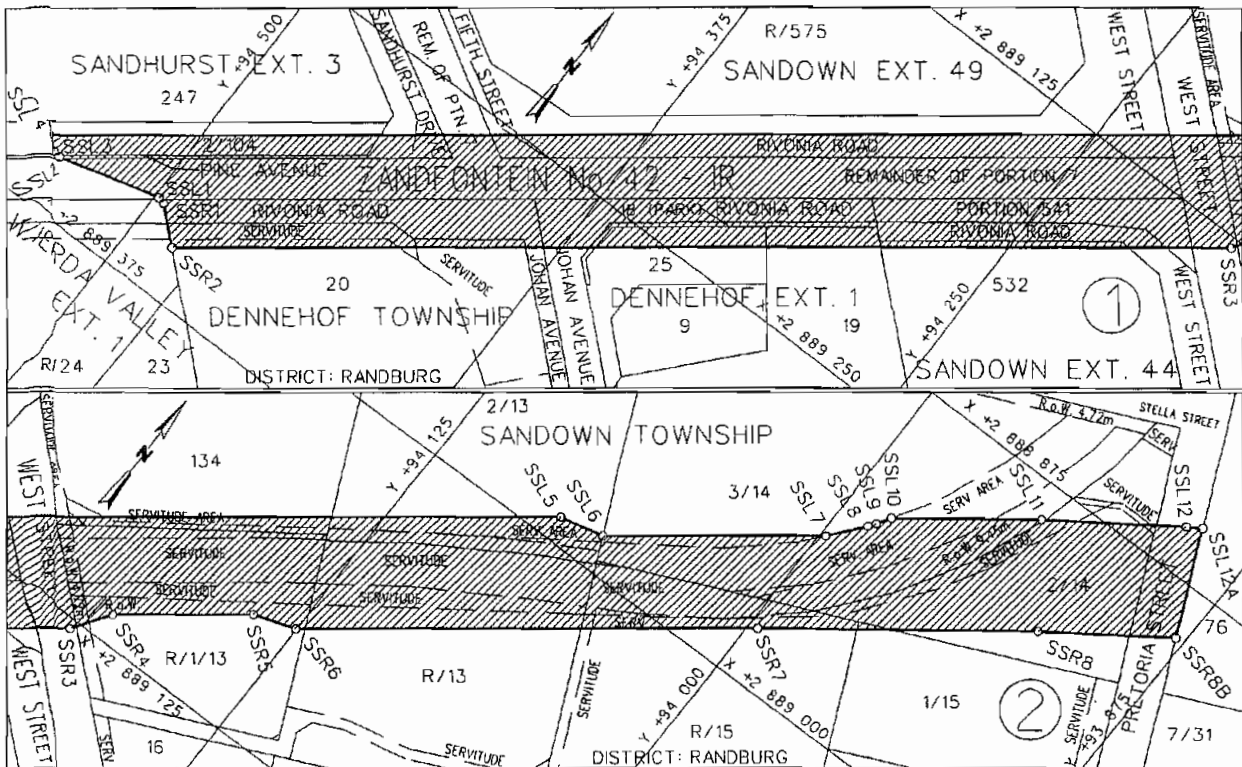
**NOTICE 5243 OF 2007**

**WITHDRAWAL OF A SKETCH WHICH APPEARED ON PAGE 14 OF NOTICE 4166 IN THE PROVINCIAL GAZETTE EXTRAORDINARY NO. 271 OF 28 SEPTEMBER 2007 WITH REGARD TO THE EXPROPRIATION OF TUNNEL SERVITUDES IN RESPECT OF THE GAUTRAIN RAPID RAIL LINK PROJECT BETWEEN PARK STATION (JOHANNESBURG) AND MARLBORO**

It is notified for general information that the Member of the Executive Council of the Province of Gauteng responsible for provincial roads, hereby withdraws the accompanying sketch which appeared on page 14 of Notice 4166 in the Provincial Gazette Extraordinary No. 271 of 28 September 2007.

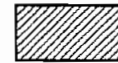
**Reference: 2/1/7/8-Gautrain**

---



REFERENCE / VERWYSINGS

ONTEINDE SPOORLYN TONNELSERWITUTE  
EXPROPRIATED RAILWAY LINE TUNNEL SERVITUDES



DIE FIGUUR : SSL1 - SSL12, SSL12A, SSR8B, SSR8 - SSR1, SSL1.  
THE FIGURE : SSL1 - SSL12, SSL12A, SSR8B, SSR8 - SSR1, SSL1.

VERTEENWOORDIG DIE ONTEIENING VAN DIE BETROKKE GEDEELTE VAN DIE SPOORLYN TONNELSERWITUTE OOR GEDEELTE 2 VAN ERF 104, 'N GEDEELTE VAN PINELAAN IN SANDHURST UITBREIDING 3, ERF 20 EN 'N GEDEELTE VAN RIVONIAWEG IN DENNEHOF, GEDEELTE 541 EN DIE RESTANT VAN GEDEELTE 7 VAN DIE PLAAS ZANDFONTEIN 42-1R, GEDEELTES VAN VYFDE STRAAT, RIVONIAWEG EN WESTSTRAAT IN SANDOWN UITBREIDING 49, ERWE 18, 19, EN 25, GEDEELTES VAN JOHANLAAN EN RIVONIAWEG IN DENNEHOF UITBREIDING 1, ERF 532, GEDEELTES VAN RIVONIAWEG EN WESTSTRAAT IN SANDOWN UITBREIDING 44, ERF 134, GEDEELTE 2 VAN ERF 13, GEDEELTE 3 VAN ERF 14, GEDEELTE 2 VAN ERF 14, DIE RESTANT VAN GEDEELTE 1 VAN ERF 13, DIE RESTANT VAN ERF 13, ERF 15, GEDEELTE 1 VAN ERF 15 EN GEDEELTES VAN WESTSTRAAT EN PRETORIASTRAAT IN SANDOWN SOOS BEDOEL BY DIE AFKONDIGING DAARVAN IN DIE PROVINSIALE KOERANT EN IN DETAIL GETOON OP PLAN GRP 03/38/06AExp.

REPRESENTS THE EXPROPRIATION OF THE PORTION CONCERNED OF THE RAILWAY LINE TUNNEL SERVITUDES OVER PORTION 2 OF ERF 104, A PORTION OF PINE AVENUE IN SANDHURST EXTENSION 3, ERF 20 AND A PORTION OF RIVONIA ROAD IN DENNEHOF, PORTION 541 AND THE REMAINDER OF PORTION 7 OF THE FARM ZANDFONTEIN 42-1R, PORTIONS OF FIFTH STREET, RIVONIA ROAD, AND WEST STREET IN SANDOWN EXTENSION 49, ERF 18, 19 AND 25, PORTIONS OF JOHAN AVENUE AND RIVONIA ROAD IN DENNEHOF EXTENSION 1, ERF 532, PORTIONS OF RIVONIA ROAD AND WEST STREET IN SANDOWN EXTENSION 44, ERF 134, PORTION 2 OF ERF 13, PORTION 3 OF ERF 14, PORTION 2 OF ERF 14, THE REMAINDER OF PORTION 1 OF ERF 13, THE REMAINDER OF ERF 13, ERF 15, PORTION 1 OF ERF 15, AND PORTIONS OF WEST STREET AND PRETORIA STREET IN SANDOWN AS INTENDED BY THE PUBLICATION THEREOF IN THE PROVINCIAL GAZETTE AND SHOWN IN DETAIL ON PLAN GRP 03/38/06AExp.

BUNDEL NR. / FILE NO. 2/1/6/1

KOÖRDINATE LYS/CO-ORDINATE LIST WG 29° KONST./CONST. Y= +/- 0.00 X= +2 800 000.00

SSL 1	+94498.425	+89345.371	SSL 9	+93986.696	+88925.109	SSR 3	+94188.617	+89128.356
SSL 2	+94535.092	+89355.317	SSL10	+93983.730	+88920.100	SSR 4	+94179.805	+89115.228
SSL 3	+94537.840	+89354.962	SSL11	+93941.101	+88887.827	SSR 5	+94140.239	+89084.658
SSL 4	+94543.280	+89351.834	SSL12	+93899.607	+88858.946	SSR 6	+94125.312	+89079.444
SSL 5	+94076.031	+88990.818	SSL12A	+93894.783	+88855.866	SSR 7	+93996.904	+88980.230
SSL 6	+94059.887	+88987.188				SSR 8	+93917.709	+88920.275
SSL 7	+93998.033	+88939.407	SSR 1	+94495.859	+89345.977	SSR 8B	+93878.096	+88892.702
SSL 8	+93988.406	+88927.564	SSR 2	+94483.998	+89356.578			