

***THE PROVINCE OF
GAUTENG***

***DIE PROVINSIE
GAUTENG***

**Provincial Gazette Extraordinary
Buitengewone Provinsiale Koerant**

Vol. 13

**PRETORIA, 1 FEBRUARY 2007
FEBRUARIE**

No. 35

CONTENTS • INHOUD

No.	<i>Page No.</i>	<i>Gazette No.</i>
GENERAL NOTICES		
488 Gauteng Transport Infrastructure Act (8/2001): Proposed expropriation of tunnel servitudes in respect of the Gautrain Rapid Rail Link project between Pretoria, Johannesburg and the OR Tambo International Airport.....	3	35
489 do.: Revoking of the proclamation of an access road over Holdings 420 and 421, North Riding Agricultural Holdings, District of Roodepoort	7	35

GENERAL NOTICES

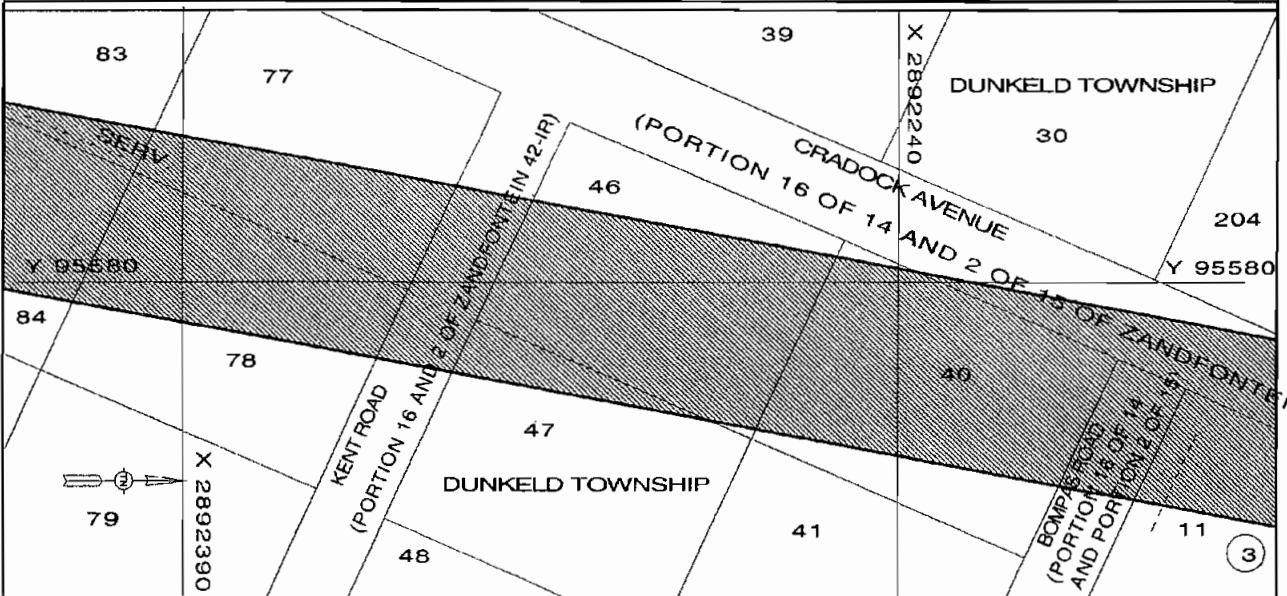
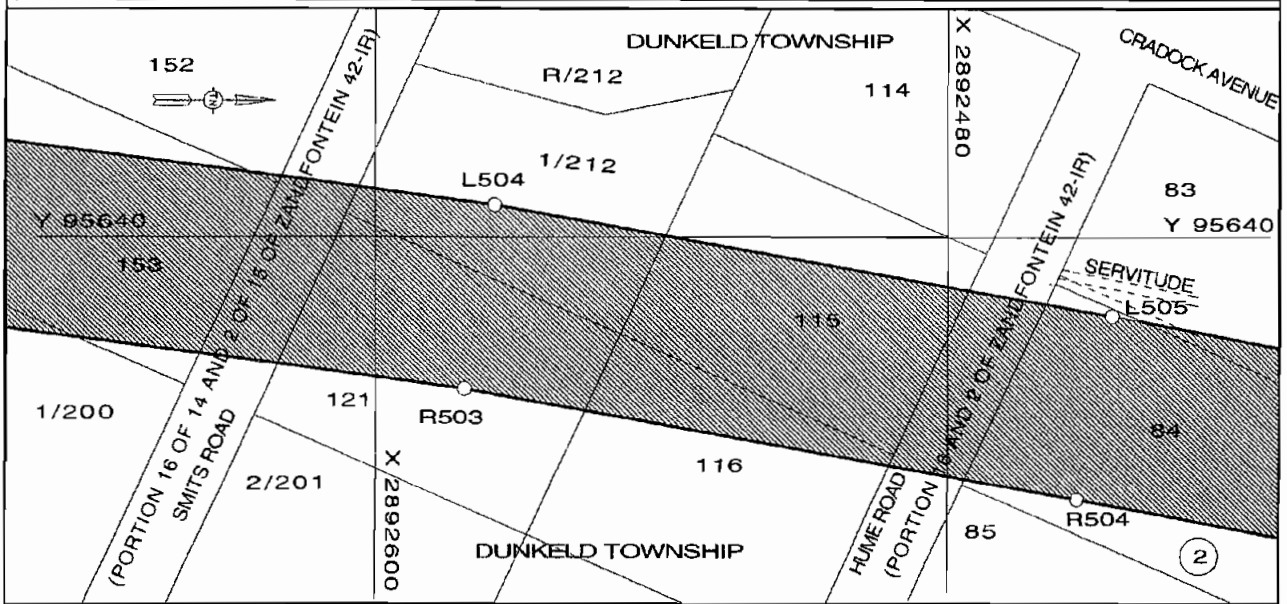
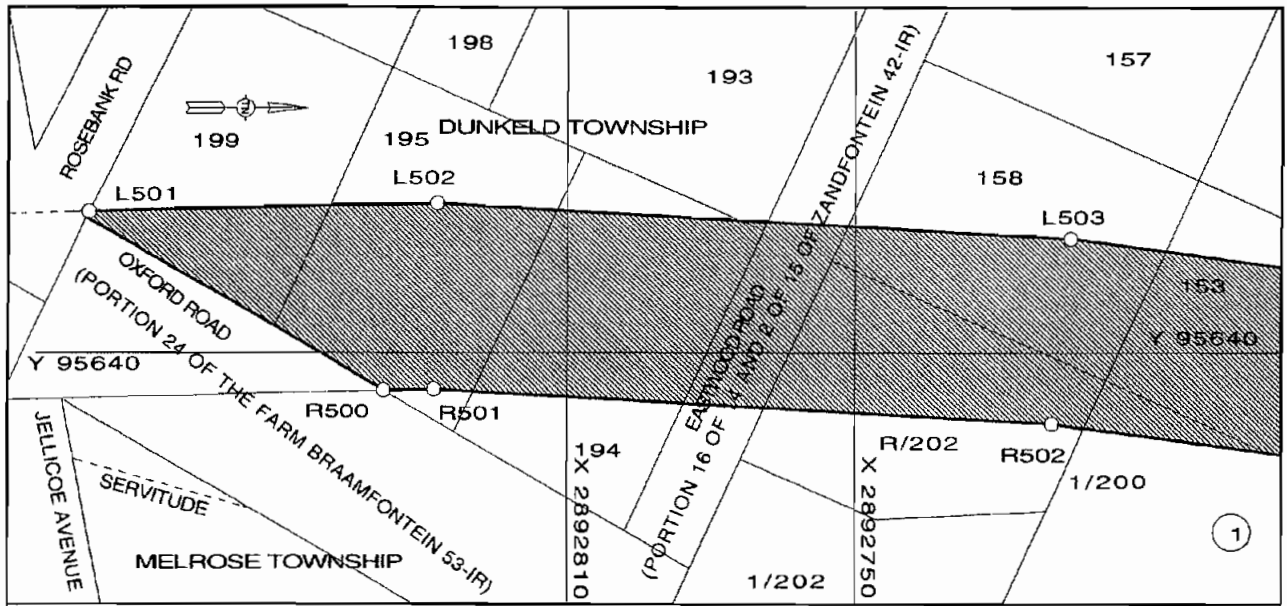
NOTICE 488 OF 2007

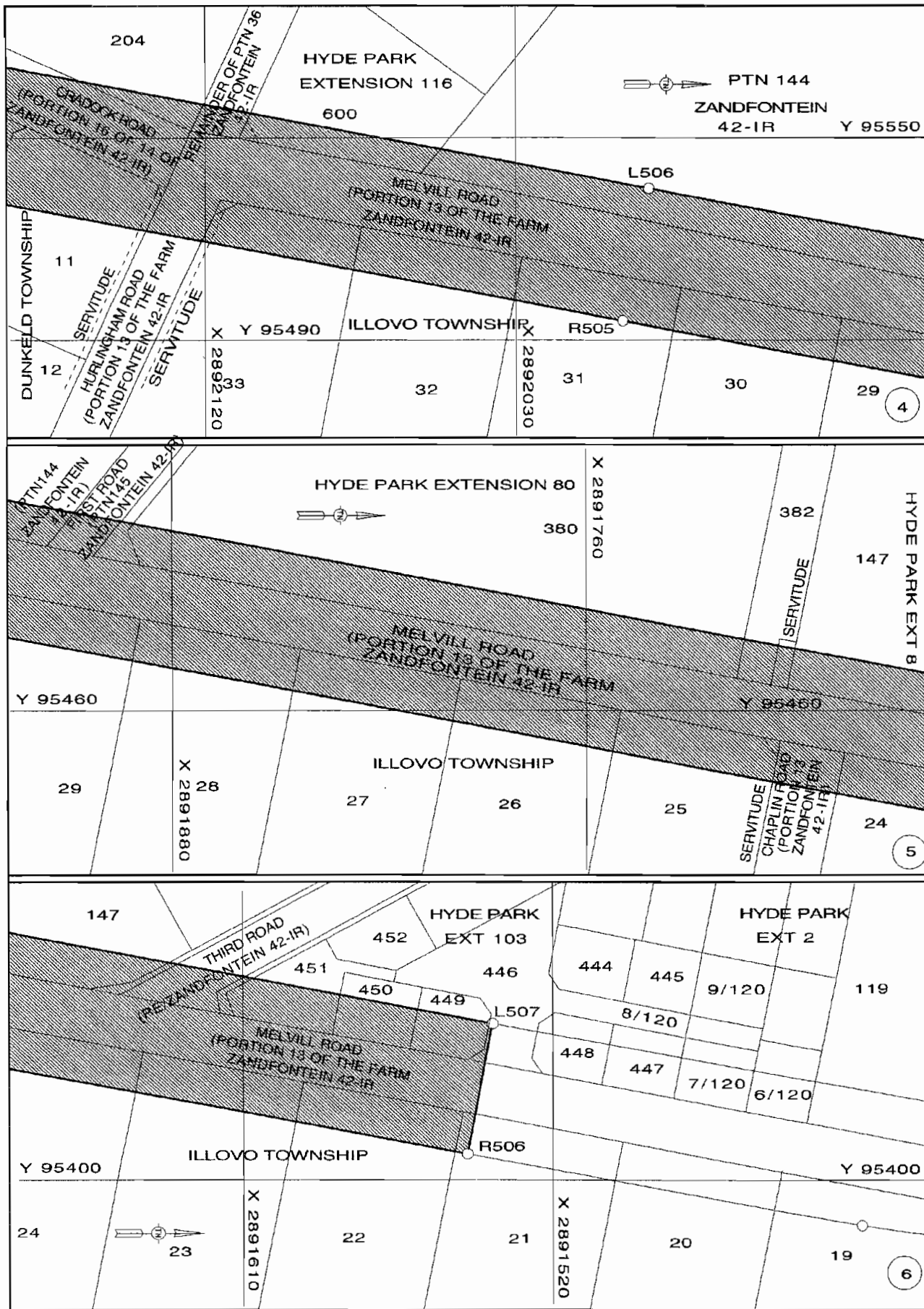
PROPOSED EXPROPRIATION OF TUNNEL SERVITUDES IN RESPECT OF THE GAUTRAIN RAPID RAIL LINK PROJECT BETWEEN PRETORIA, JOHANNESBURG AND THE O R TAMBO INTERNATIONAL AIRPORT

In terms of regulation 13 of the Gauteng Transport Infrastructure Regulations 2002, the MEC for Public Transport, Roads and Works intends to register real rights over erven 11, 40, 46, 47, 77, 78, 83, 84, 115, 116, 121, 152, 153, 158, 193, 194, 195, 199, Portion 1 of Erf 212, Portion 1 of Erf 200, Remainder of Erf 202 and Portion of Eastwood Road, Hume Road, Smits Road, Kent Road, Bompas Road and Cradock Road in Dunkeld Township, Erven 21 – 33, Melville Road, Chaplin Road and Hurlingham Road over Illovo Township, First Road, Third Road and the Remainder of Portion 36, Portion 144 of the farm Zandfontein 42 IR, Erf 600 in Hyde Park Extension 116 Township, Erven 380 and 382 in Hyde Park Extension 80 Township, Erf 147 and Third Road in Hyde Park Extension 8 Township, Erven 447 – 451 and Third Street in Hyde Park Extension 103 Township, to construct tunnels below the surface of the said land within the area as indicated on the accompanying sketch plans.

In terms of the aforementioned regulation interested parties are requested to lodge written comments on or objections with regard to the aforementioned intention as contemplated by the MEC, in writing to the Head : Department of Public Transport, Roads and Works, Private Bag X83, Marshalltown 2107 (Fax (011) 355 7235) within 21 (twenty one) days from the date of this notice.

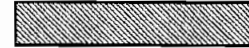
Reference: 2/1/7/8-Gautrain





REFERENCE / VERWYSINGS

GEPROKLAAMEER SPOORLYN SERWITUUT
PROCLAIMED RAILWAY LINE SERVITUDE



DIE FIGUUR : L501, L502 - L507, R506 - R500, L501
THE FIGURE :

VERTEENWOORDIG DIE PROKLAMASIE VAN DIE BETROKKE GEDEELTE VAN DIE SPOORLYN SERWITUUT OOR ERWE 11,40,46,47,77,78,83,84,115,116,121,152,153,158,193,194,195,199, GEDEELTE 1 VAN ERF 212, GEDEELTE 1 VAN ERF 200, RESTANT VAN ERF 202 EN GEDEELTES VAN EASTWOOD WEG, SMITS WEG, HUME WEG, KENT WEG, BOMPAS WEG EN CRADDOCK WEG IN DUNKELD, GEDEELTES VAN FIRST EN THIRD WEG, DIE RESTANT VAN GEDEELTE 36 EN GEDEELTE 144 VAN DIE PLAAS ZANDFONTEIN 42-IR, ERWE 21-33, GEDEELTES VAN MELVILLE WEG, CHAPLIN WEG EN HURGILINGHAM WEG IN ILLOVO, ERF 600 IN HYDE PARK UITBREIDING 116, ERWE 380 EN 382 IN HYDE PARK UITBREIDING 80, ERF 147 EN 'N GEDEELTE VAN THIRD WEG IN HYDE PARK UITBREIDING 8, ERWE 447-451 EN 'N GEDEELTE VAN THIRD WEG IN HYDE PARK UITBREIDING 103 SOOS BEDOEL BY DIE AFKONDIGING DAARVAN IN DIE PROVINSIALE KOERANT EN IN DETAIL GETOON OP PLAN GRP 03/38/04Exp.

REPRESENTS THE PROCLAMATION OF THE PORTION CONCERNED OF THE RAILWAY LINE SERVITUDE OVER ERVEN 11, 40,46,47,77,78,83,84,115,116, 121,152,153,158,193,194,195,199, PORTION 1 OF ERF 212, PORTION 1 OF ERF 200, THE REMAINDER OF ERF 202 AND PORTIONS OF EASTWOOD ROAD, HUME ROAD, SMITS ROAD, KENT ROAD, BOMPAS ROAD AND CRADDOCK ROAD IN DUNKELD, ERVEN 21-33, PORTIONS OF MELVILL ROAD, CHAPLIN ROAD AND HURLINGHAM ROAD OVER ILLOVO, FIRST ROAD AND THIRD ROAD AND THE REMAINDER OF PORTION 36 AND PORTION 144 OF THE FARM ZANDFONTEIN 42-IR, ERF 600 IN HYDE PARK EXTENSION 116, ERVEN 380 AND 382 IN HYDE PARK EXTENSION 80, ERF 147 AND PORTIONS OF THIRD ROAD IN HYDE PARK EXTENSION 8, ERVEN 447-451 AND PORTIONS OF THIRD STREET IN HYDE PARK EXTENSION 103 AS INTENDED BY THE PUBLICATION THEREOF IN THE PROVINCIAL GAZETTE AND SHOW IN DETAIL ON PLAN GRP03/38/04Exp.

KOORDINATE LYS / CO-ORDINATE LIST WG29⁹ KONST./CONST. Y=±0.00 X=+2 800 000.00

L501	+ 95 670.527	+ 92 910.105	R500	+ 95 631.901	+ 92 854.447
L502	+ 95 672.310	+ 92 837.560	R501	+ 95 632.300	+ 92 838.200
L503	+ 95 664.750	+ 92 705.110	R502	+ 95 624.920	+ 92 708.970
L504	+ 95 647.000	+ 92 575.000	R503	+ 95 607.480	+ 92 581.350
L505	+ 95 623.060	+ 92 445.640	R504	+ 95 583.700	+ 92 452.920
L506	+ 95 535.120	+ 91 990.970	R505	+ 95 495.820	+ 91 998.570
L507	+ 95 447.151	+ 91 536.820	R506	+ 95 407.940	+ 91 544.190

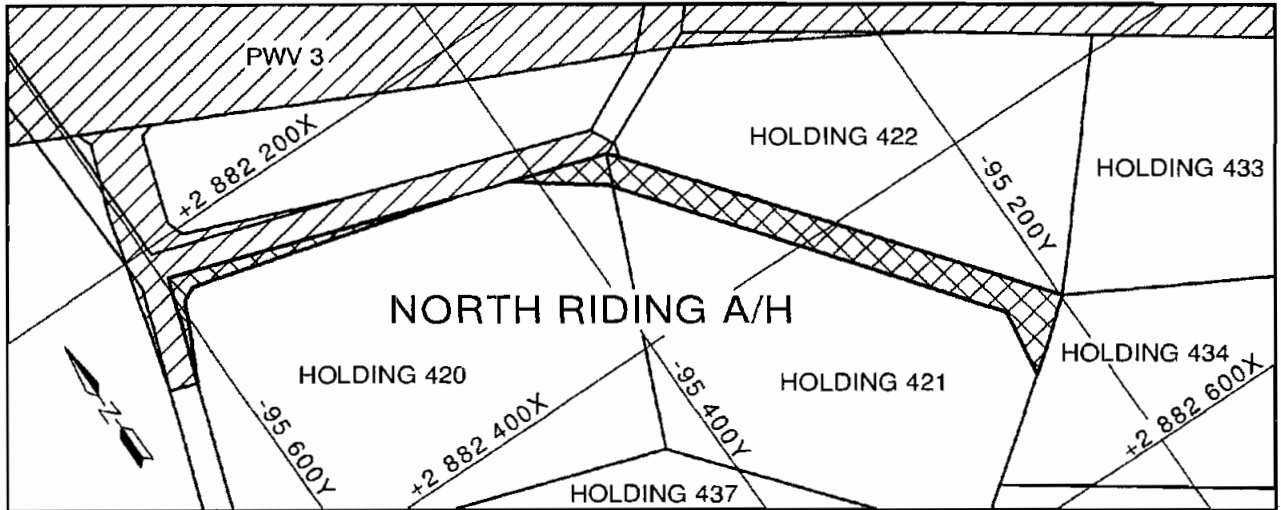
NOTICE 489 OF 2007**REVOKING OF THE PROCLAMATION OF AN ACCESS ROAD OVER HOLDINGS 420 AND 421 NORTH RIDING AGRICULTURAL HOLDINGS: DISTRICT OF ROODEPOORT**

In terms of section 16(1) of the Gauteng Transport Infrastructure Act, 2001 (Act No. 8 of 2001) the MEC for Public Transport, Roads and Works hereby revokes the proclamation of an access road over holdings 420 and 421, North Riding Agricultural Holdings as indicated on the accompanying sketch plan

Plan PRS77/54/Exp. is available for inspection by any interested person during office hours at the Plan Room of the Department of Public Transport, Roads and Works, 1st floor, Sage Life Towers South, 41 Simmonds Street, Johannesburg.

Executive Council Resolution: 011 DATED 29 NOVEMBER 2004

Reference: 2/1/1/2/3/1-PWV 3



VERWYSING / REFERENCE

PAD GEDEPROKLAMEER
ROAD DEPROCLAIMED



BESTAANDE PAD
EXISTING ROAD

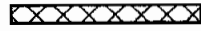


DIE FIGURE



VERTEENWOORDIG DIE INTREKKING VAN DIE PROKLAMASIE VAN DIE BETROKKE GEDEELTE VAN 'N TOEGANSPAD OOR HOEWES 420 & 421 VAN NORTH RIDING L/H SOOS BEDOEL BY AFKONDIGING DAARVAN IN DIE PROVINSIALE KOERANT EN IN DETAIL GETOON OP PLAN PRS77/54/5Exp

THE FIGURES



REPRESENTS THE REVOKING OF THE PROCLAMATION OF THE PORTION CONCERNED OF AN ACCESS ROAD OVER HOLDINGS 420 & 421 OF NORTH RIDING A/H AS INTENDED BY PUBLICATION THEREOF IN THE PROVINCIAL GAZETTE AND SHOWN IN DETAIL ON PLAN PRS77/54/5Exp

BUNDEL NR. / FILE NO. 2/1/1/2/3/1-PWV3