

*THE PROVINCE OF
GAUTENG*

*DIE PROVINSIE
GAUTENG*

**Provincial Gazette Extraordinary
Buitengewone Provinsiale Koerant**

Vol. 13

**PRETORIA, 7 DECEMBER 2007
DESEMBER**

No. 358

CONTENTS • INHOUD

<i>No.</i>		<i>Page No.</i>	<i>Gazette No.</i>
GENERAL NOTICES • ALGEMENE KENNISGEWINGS			
5330	Proposed expropriation of a tunnel servitude in respect of the Gautrain Rapid Rail Link between Park Station and Marlboro Station.....	3	358
5331	Gauteng Transport Infrastructure Act (8/2001): Increase in width of a portion of Provincial Road K71: District Pretoria	6	358
5332	do.: Proclamation of access roads in connection with Provincial Road K71 (P66-1): District Pretoria	10	358
5333	do.: Proclamation of a portion of Provincial Road K52: District Pretoria.....	16	358
5334	do.: Increase in width of a portion of Provincial Road K52: District Pretoria.....	18	358
5335	do.: Increase in width of a portion of Provincial Road P102-1	20	358
5336	do.: Proclamation of the deviation of a portion of Provincial Road 49: District Pretoria.....	22	358

GENERAL NOTICE

NOTICE 5330 OF 2007

PROPOSED EXPROPRIATION OF A TUNNEL SERVITUDE IN RESPECT OF THE GAUTRAIN RAPID RAIL LINK: BETWEEN PARK STATION AND MARLBORO STATION

1. The Member of the Executive Council of the Province of Gauteng responsible for provincial roads (the MEC) intends to expropriate the following properties for the Gautrain Rapid Rail Link

Property Description	Title Deed Number	Extent of Property	Extent Affected	Depth of tunnel	Owner
Erf 5010 Johannesburg	T60992/2006	496m ²	496m ²	61m-63m	Chessboard Trade & Invest 3 Pty Ltd
Erf 5170 Johannesburg	T10318/1984	991m ²	217m ²	76m-86m	Ridgeview share block Pty Ltd
Erf 4953 Johannesburg	T7511/1992	496m ²	429m ²	29m-45m	A.M Ayob
Erf 3898 Johannesburg	T34868/1980	495m ²	106m ²	58m-59m	4 Goldreich Straat Pty Ltd
Erf 3755 Johannesburg	T3568/1981	248m ²	248m ²	54m-59m	Kleinstar inv Pty Ltd
Erf 3892 Johannesburg	T70408/2001	495m ²	255m ²	58m-59m	AFHCO Holdings Pty Ltd
Erf 4098 Johannesburg	T25034/2002	447m ²	54m ²	62m-67m	Eastleigh Court Housing Cooperative Ltd
Erf 3750 Johannesburg	T31708/1981	495m ²	105m ²	54m-59m	National Condominium Sales CC
Re of Erf 4479 Johannesburg	T36811/2000	2349m ²	1863m	36m-37m	15 Hospital street Pty Ltd
Erf 4735 Johannesburg	T42279/1989	1487m ²	441m ²	58m-59m	Elandsfontein Inv Co Pty Ltd
Erf 4584 Johannesburg	T36397/1998	187m ²	645m ²	59m-62m	Farmprops 22 Pty Ltd
Erf 4987 Johannesburg	T20341/2003	1487m ²	1233m ²	58m-59m	Doubletake Inv Pty Ltd
Erf 4973 Johannesburg	T19721/2002	1983m ²	1233m ²	45m-54m	Toronto House cc
Erf 3649 Johannesburg	T15152/1964	248m ²	3m ²	45m-54m	Kaja Prop Pty Ltd
Erf 1945 Houghton Estate	SS66/1986	3268m ²	1561m ²	13m-14m	Willow Place Sectional Title

					Scheme
Erf 135 Hyde Park Ext 5	T75681/2002	3965m ²	677m ²	72m-75m	South African Football Association
Erf 9 Illovo	T8576/1980	3718m ²	595m ²	77m-80m	48 Melville Road Illovo cc
Erf 326 Saxonwold	T31867/2005	2549m ²	342m ²	13m-15m	Tan-Ex-Inv cc
Erf 323 Saxonwold	T25805/1995	2024m ²	219m ²	13m-15m	Dorver cc
Erf 177 Saxonwold	T63791/2005	2024m ²	249m ²	13m-15m	Cambridge Prop Holding Pty Ltd
Erf 324 Saxonwold	T13248/1992	2024m ²	218m ²	13m-15m	Oxford Road Management cc
Erf 176 Saxonwold	T42079/2001	2024m ²	262m ²	13m-15m	MJ International Travel Hld Pty Ltd
Erf 382 Saxonwold	T17882/2000	2331m ²	328m ²	17m-19m	Transnet Ltd
Erf 55 Saxonwold	T52778/2001	1954m ²	193m ²	17m-20m	SHM Inv Holdings cc
Ptn 1 of Erf 504 Saxonwold	T11434/2005	2730m ²	280m ²	20m-22m	Mr Andrew John Linington
Erf 111 Saxonwold	T13898/1993	2014m ²	287m ²	16m-18m	Cherry Inv cc
Erf 325 Saxonwold	T14519/2005	2024m ²	217m ²	13m-15m	Mystic River Inv 44 Pty Ltd
Erf 56 Saxonwold	T5861/1989	1936m ²	370m ²	17m-20m	Molokem cc
Ptn 5 of Erf 39 Sandhurst	T7187/2006	4069m ²	3202m ²	66m-69m	Silver Falcon Trading 184 Pty Ltd
Ptn 9 of Erf 17 Riviera	T3782/2000	1983m ²	577m ²	17m-20m	70 Oxford Road cc

2. In terms of regulation 13 of the Gauteng Transport Infrastructure Regulations, 2002 the MEC must notify the owners occupiers and other interested and affected parties in writing, by delivering the notice by hand or sending it by registered post to the last known address of such person, available to the Department, if he or she intends to take any action in terms of section 15 (3) of the Gauteng Transport Infrastructure Act, 2001 (Act 8 of 2001).
3. The addresses of the owners and other persons in respect of the aforementioned properties could not be traced, in consequence of which this notice is published in the Provincial Gazette to afford the said owners and other persons concerned to make comments and representations, with regard to the MEC's said intention, not less than 21 days from the date of this notice. Plans indicating the land

encroached upon, are available for inspection by any interested person in the Plan Room of the Department of Public Transport, Roads and Works, at the physical address below.

4. All correspondence in the above regard must be directed to the following address:

Physical Address: Sage Life Building, 41 Simmonds Street, Johannesburg.

Postal Address: Private Bag X83, Marshalltown, 2107, Reference: Ms N Buitendag or Ms E Marais (Tel: 011 355 7264/011 3555 7020)

Reference: 2/1/7/8-Gautrain

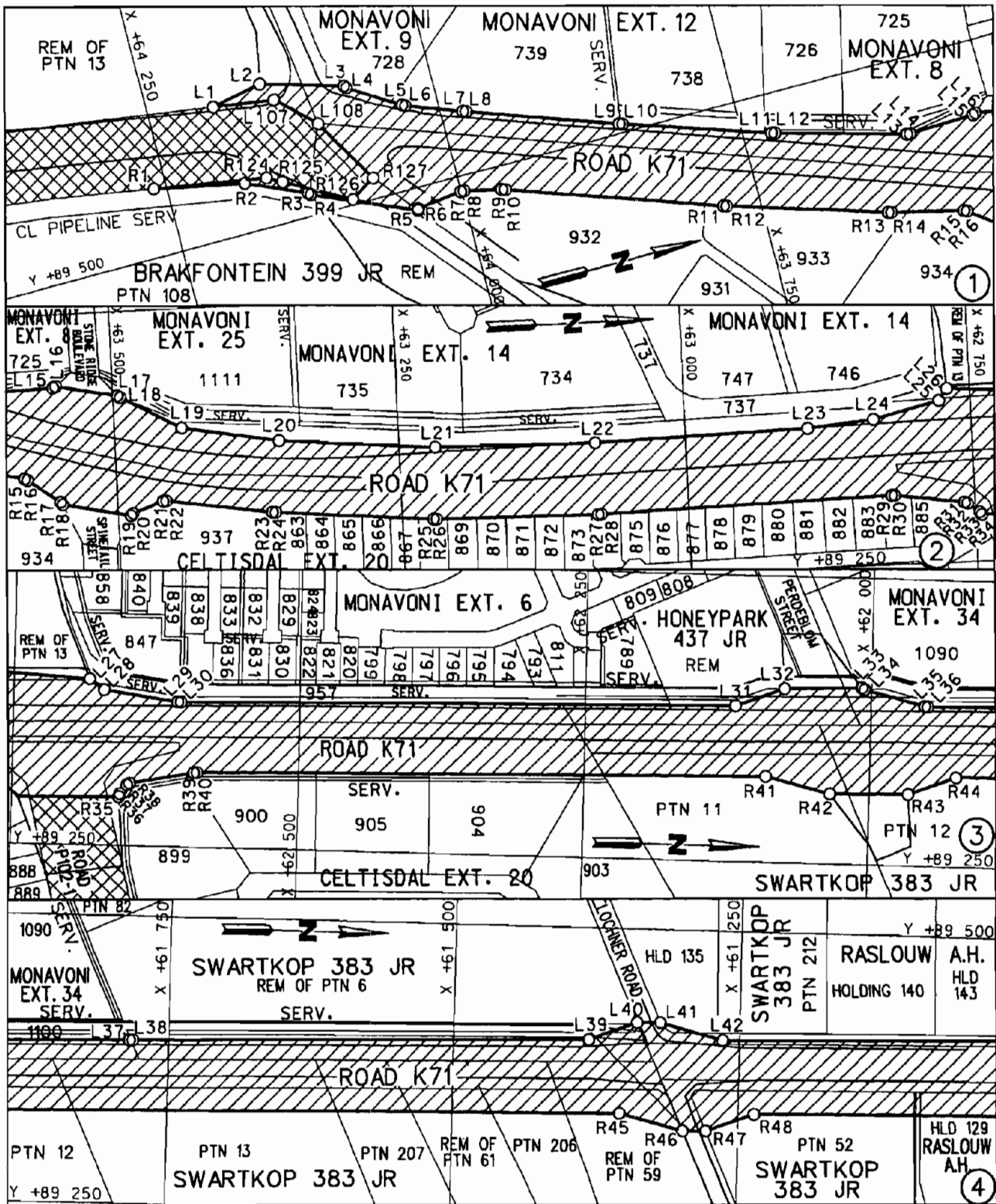
NOTICE 5331 OF 2007**INCREASE IN WIDTH OF A PORTION OF PROVINCIAL ROAD K71: DISTRICT PRETORIA**

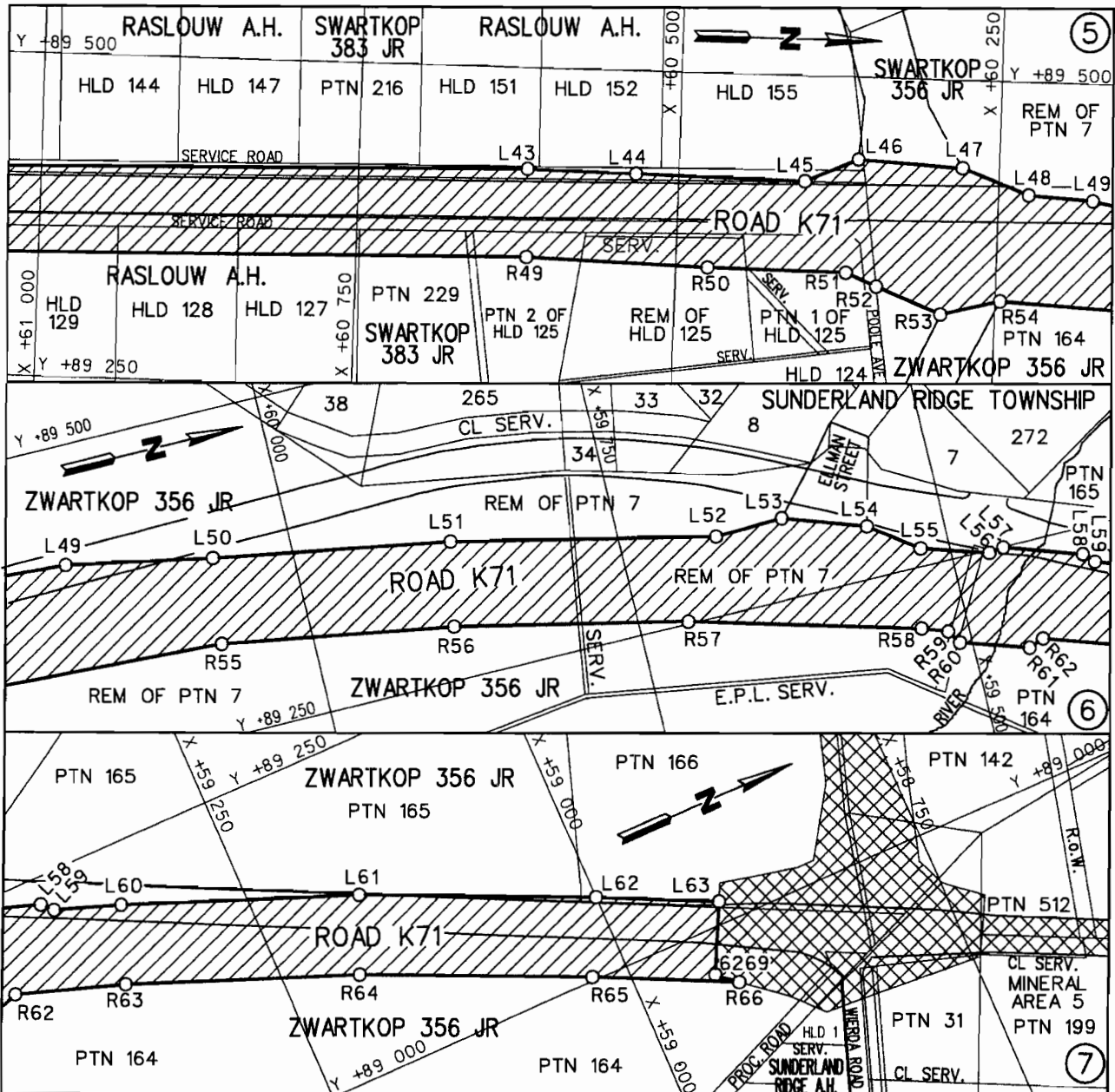
In terms of section 11(2) of the Gauteng Transport Infrastructure Act, 2001 (Act No. 8 of 2001) the MEC for Public Transport, Roads and Works hereby proclaims the increase of the width of provincial road K71 over the remainder of Portion 13, Portion 108 and the remainder of the farm Brakfontein 399 JR, a portion of provincial road P66-1 in Celtisdal Extension 20, the remainder of the farm Honey Park 437 JR, Portions 11, 12, 13, 206, 207, 52, 212, 229 and the remainders of Portions 61, 59, 7 and 6 of the farm Swartkop 383 JR, holdings 129, 128, 127, 135, 155 and Portion 1, 2 and the remainder of holding 125, portions of Lochner Street, Poole Avenue, Voortrekker Street and Service Roads West and East of Voortrekker Street in Raslouw Agricultural Holdings, the remainder of Portion 7 and Portions 164, 165 and 166 of the farm Swartkop 356 JR as indicated on the accompanying sketch plans.

In terms of section 23(6) of the aforementioned act, it is hereby declared that boundary beacons, demarcating the increase in the width of the portion of the road in question have been placed on the land and that plans GRP 04/16/2 Exp – 5 Exp and 7 Exp indicating the land encroached upon by the said road adjustment are available for inspection by any interested person in the Plan Room of the Department of Public Transport, Roads and Works, Sage Life Building, 41 Simmonds Street, Johannesburg.

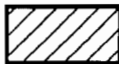
Reference: 2/1/1/2/3/1-K71 (1)

MEC Resolution 005 Dated 22 October 2007





GEPROKLAMEERDE PAD
PROCLAIMED ROAD



BESTAANDE PAD
EXISTING ROAD



DIE FIGUUR : L1-L63, 6269, R66-R1, R124-R127, L108, L107, L1.
 VERTEENWOORDIG DIE PROKLAMASIE VAN DIE BETROKKE GEDEELTE VAN PROVINSIALE PAD K71 OOR DIE RESTANT VAN GEDEELTE 13, GEDEELTE 108 EN DIE RESTANT VAN DIE PLAAS BRAKFRONTEIN 399 JR, 'N GEDEELTE VAN PROVINSIALE PAD P66-1 IN CELTISDAL UITBREIDING 20, DIE RESTANT VAN DIE PLAAS HONEY PARK 437 JR, GEDEELTES 11, 12, 13, 206, 207, 52, 212, 229 EN DIE RESTANT VAN GEDEELTES 61, 59, 7 EN 6 VAN DIE PLAAS SWARTKOP 383 JR, HOEWES 129, 128, 127, 135, 155 EN GEDEELTES 1, 2 EN DIE RESTANT VAN HOEWES 125 ASOOK GEDEELTES VAN LOCHNER STRAAT, POOLE LAAN, VOORTREKKER STRAAT EN DIENSPAARIE WES EN OOS VAN VOORTREKKER STRAAT IN RASLOUW LANDBOU HOEWES, DIE RESTANT VAN GEDEELTE 7 EN GEDEELTES 164, 165 EN 166 VAN DIE PLAAS SWARTKOP 356 JR SOOS BEDOEL BY AFKONDIGING DAARVAN IN DIE PROVINSIALE KOERANT EN IN DETAIL GETOON OP PLANNE GRP 04/16/2Exp - 5Exp EN 7Exp

THE FIGURE : L1-L63,6269,R66-R1,R124-R127,L108,L107,L1.
 REPRESENTS THE PROCLAMATION OF THE PORTION CONCERNED OF
 PROVINCIAL ROAD K71 OVER THE REMAINDER OF PORTION 13,
 PORTION 108 AND THE REMAINDER OF THE FARM BRAKFORTEIN
 399 JR. A PORTION OF PROVINCIAL ROAD P66-1 IN CELTISDAL
 EXTENTION 20, THE REMAINDER OF THE FARM HONEY PARK 437
 JR, PORTIONS 11, 12, 13, 206, 207, 52, 212, 229 AND THE
 REMAINDERS OF PORTIONS 61, 59, 7 AND 6 OF THE FARM
 SWARTKOP 383 JR, HOLDINGS 129, 128, 127, 135, 155 AND
 PORTION 1, 2 AND THE REMAINDER OF HOLDING 125, PORTIONS
 OF LOCHNER STREET, POOLE AVENUE, VOORTREKKER STREET AND
 SERVICE ROADS WEST AND EAST OF VOORTREKKER STREET IN
 RASLOUW AGRICULTURAL HOLDINGS, THE REMAINDER OF PORTION
 7 AND PORTIONS 164, 165 AND 166 OF THE FARM ZWARTKOP 356
 JR AS INTENDED BY THE PUBLICATION THEREOF IN THE
 PROVINCIAL GAZETTE AND SHOWN IN DETAIL ON PLANS
 GRP 04/16/2Exp - 5Exp AND 7Exp

BUNDEL NR. / FILE NO. 2/1/1/2/3/1-K71(K1)

KOÖRDINATE LYS/CO-ORDINATE LIST WG 29°KONST./CONST. Y- +/- 0.000 X- +2 800 000.000

L1	+89612.917	+64192.823	L47	+89431.991	+60278.384	R27	+89305.484	+63080.210
L2	+89621.680	+64148.590	L48	+89412.603	+60226.533	R28	+89305.489	+63077.210
L3	+89600.957	+64076.786	L49	+89409.614	+60175.753	R29	+89310.451	+62823.420
L4	+89598.797	+64074.911	L50	+89387.579	+60061.476	R30	+89310.277	+62820.434
L5	+89571.863	+64030.939	L51	+89356.042	+59877.580	R31	+89301.933	+62759.406
L6	+89570.560	+64028.253	L52	+89310.863	+59675.677	R32	+89300.817	+62756.730
L7	+89553.140	+63981.127	L53	+89312.434	+59622.563	R33	+89292.883	+62746.380
L8	+89552.125	+63978.304	L54	+89290.446	+59558.934	R34	+89290.580	+62744.626
L9	+89508.205	+63852.766	L55	+89263.923	+59522.325	R35	+89292.205	+62656.470
L10	+89507.242	+63849.925	L56	+89248.021	+59471.344	R36	+89294.891	+62655.678
L11	+89466.368	+63725.525	L57	+89249.590	+59459.900	R37	+89302.669	+62649.722
L12	+89465.507	+63722.652	L58	+89229.735	+59400.332	R38	+89304.138	+62647.336
L13	+89435.523	+63612.198	L59	+89221.717	+59392.418	R39	+89314.732	+62591.234
L14	+89435.175	+63609.251	L60	+89203.775	+59341.870	R40	+89315.039	+62588.260
L15	+89436.905	+63551.749	L61	+89135.760	+59169.063	R41	+89324.766	+62089.887
L16	+89437.925	+63549.110	L62	+89058.753	+59000.071	R42	+89310.867	+62034.363
L17	+89427.382	+63495.875	L63	+89016.839	+58914.153	R43	+89312.193	+61966.449
L18	+89425.651	+63493.515	L107	+89605.110	+64139.500	R44	+89328.021	+61924.226
L19	+89396.621	+63440.336	L108	+89575.950	+64107.780	R45	+89339.150	+61354.586
L20	+89381.505	+63356.283				R46	+89325.241	+61298.599
L21	+89369.619	+63218.347	R1	+89558.414	+64261.153	R47	+89325.641	+61278.104
L22	+89367.455	+63079.917	R2	+89542.404	+64183.090	R48	+89341.469	+61235.882
L23	+89371.104	+62893.112	R3	+89519.938	+64131.455	R49	+89353.579	+60615.985
L24	+89376.224	+62835.856	R4	+89517.969	+64129.471	R50	+89349.470	+60475.133
L25	+89390.363	+62777.644	R5	+89480.929	+64040.668	R51	+89348.487	+60366.704
L26	+89400.515	+62769.973	R6	+89482.256	+64040.140	R52	+89338.418	+60342.348
L27	+89395.192	+62684.093	R7	+89486.924	+64000.700	R53	+89318.690	+60291.948
L28	+89385.769	+62671.369	R8	+89486.781	+63997.744	R54	+89330.014	+60246.055
L29	+89376.913	+62606.596	R9	+89479.959	+63966.366	R55	+89321.134	+60070.104
L30	+89376.739	+62603.610	R10	+89479.151	+63963.482	R56	+89291.244	+59890.119
L31	+89386.242	+62117.389	R11	+89416.549	+63781.968	R57	+89251.933	+59711.955
L32	+89402.087	+62075.172	R12	+89415.621	+63779.116	R58	+89203.308	+59536.103
L33	+89404.561	+62008.230	R13	+89374.709	+63645.424	R59	+89196.241	+59516.573
L34	+89403.035	+62005.825	R14	+89373.933	+63642.528	R60	+89185.649	+59509.519
L35	+89389.845	+61953.215	R15	+89359.587	+63580.312	R61	+89169.010	+59458.061
L36	+89389.509	+61950.260	R16	+89358.361	+63577.642	R62	+89173.468	+59446.141
L37	+89392.751	+61784.490	R17	+89337.879	+63549.798	R63	+89145.506	+59363.052
L38	+89392.821	+61781.491	R18	+89335.626	+63547.967	R64	+89078.685	+59193.280
L39	+89403.607	+61382.981	R19	+89323.165	+63489.004	R65	+89003.030	+59027.255
L40	+89419.437	+61340.668	R20	+89324.994	+63486.904	R66	+88953.055	+58924.813
L41	+89419.836	+61320.245	R21	+89334.396	+63459.976	R124	+89542.190	+64163.850
L42	+89405.918	+61264.717	R22	+89334.657	+63457.078	R125	+89535.020	+64150.820
L43	+89421.566	+60617.313	R23	+89320.193	+63365.252	R126	+89504.550	+64093.950
L44	+89420.209	+60533.172	R24	+89319.831	+63362.276	R127	+89517.830	+64071.700
L45	+89418.178	+60401.061	R25	+89307.829	+63222.994	6269	+88965.363	+58939.779
L46	+89436.240	+60359.694	R26	+89307.676	+63220.000			

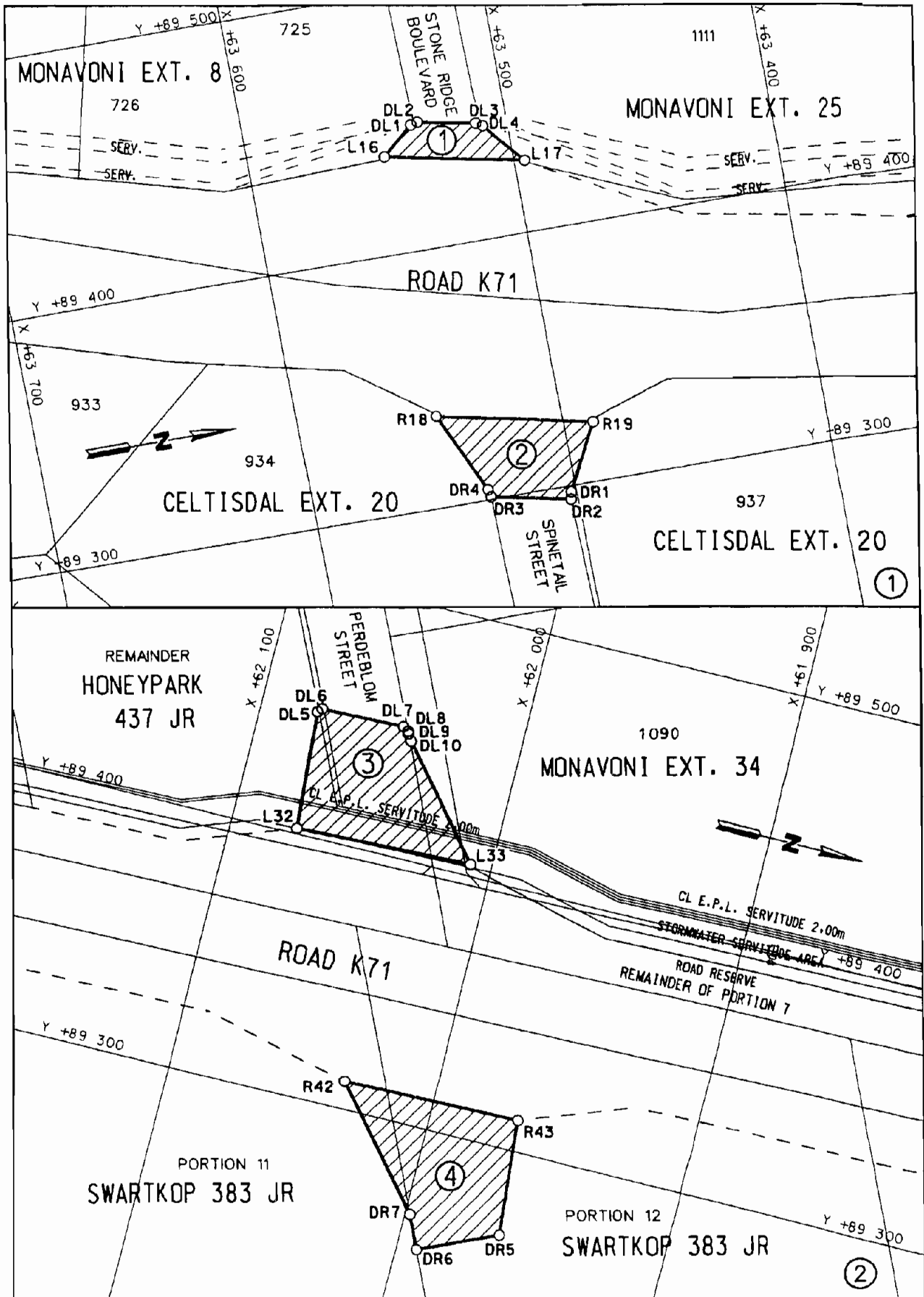
NOTICE 5332 OF 2007**PROCLAMATION OF ACCESS ROADS IN CONNECTION WITH PROVINCIAL ROAD K71 (P66-1): DISTRICT PRETORIA**

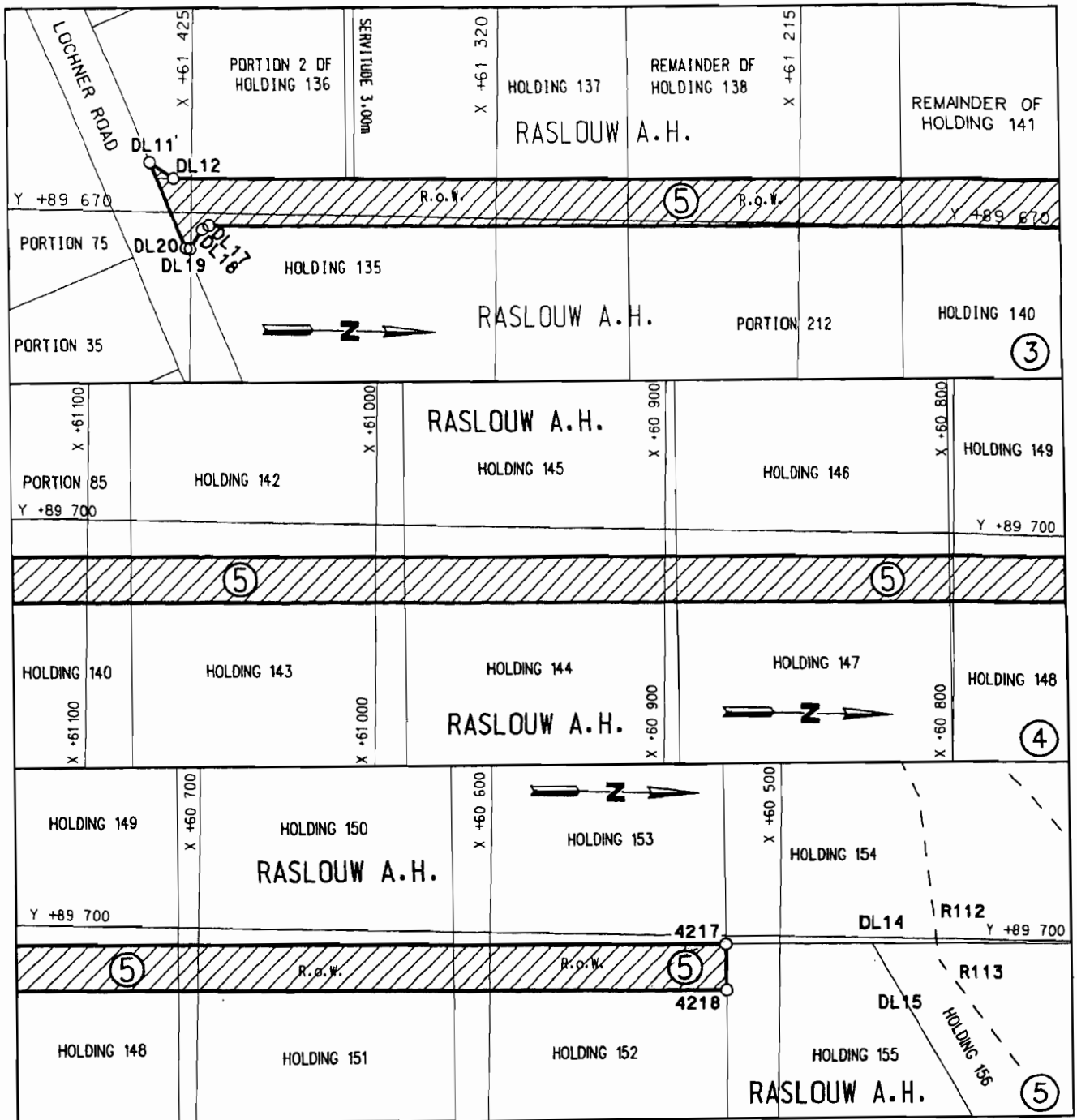
In terms of section 13(1) of the Gauteng Transport Infrastructure Act, 2001 (Act No. 8 of 2001) the MEC proclaims that access roads exist on the land as indicated on the accompanying sketch plans.

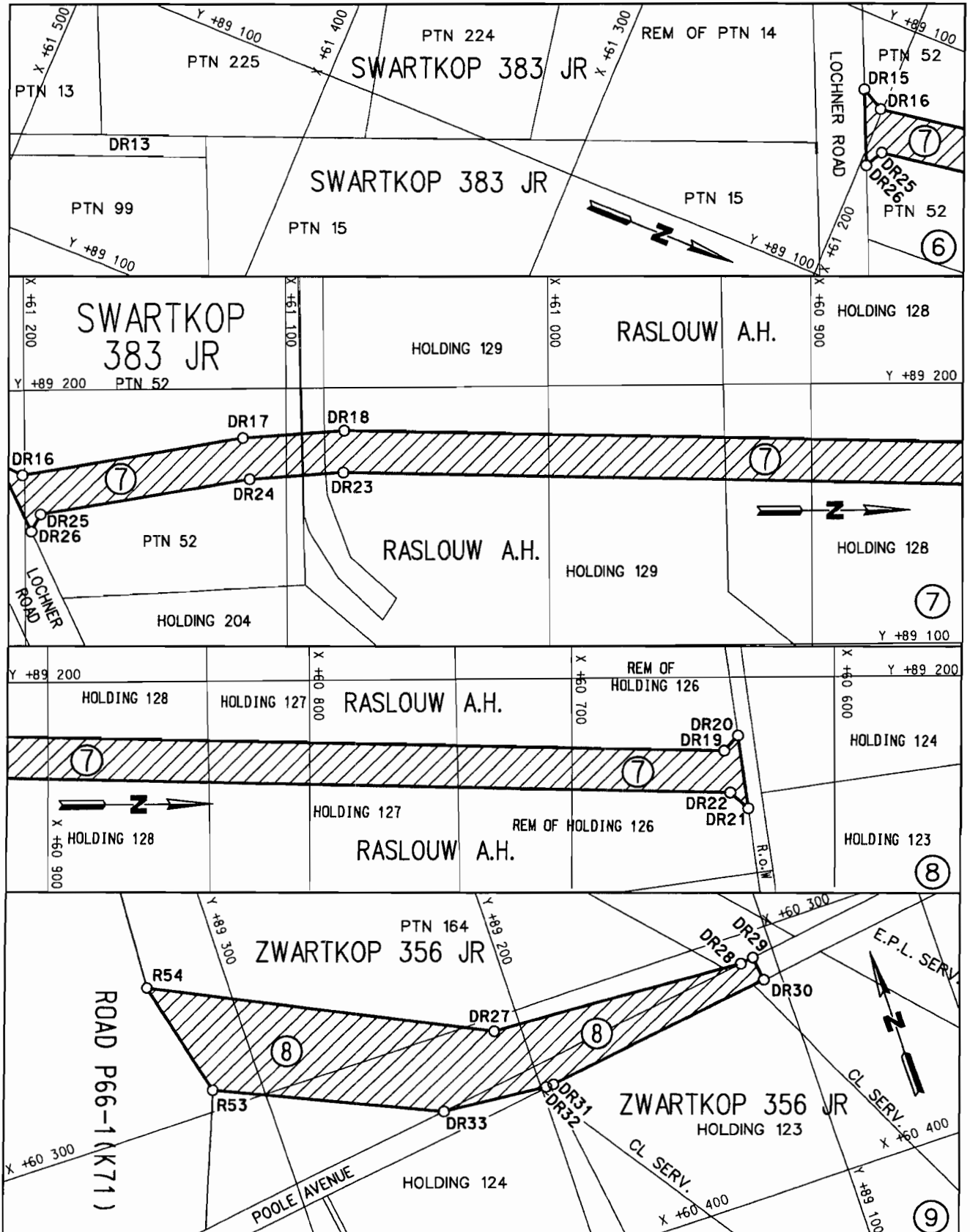
In terms of section 23(6) of the aforementioned act, it is hereby declared that boundary beacons demarcating the said access roads, have been placed and that plans GRP 04/16/2 Exp – 5 Exp and 7 Exp indicating the land encroached upon by virtue of the proclamation of the access roads, are available for inspection by any interested person in the Plan Room of the Department of Public Transport, Roads and Works, Sage Life Building, 41 Simmonds Street, Johannesburg.

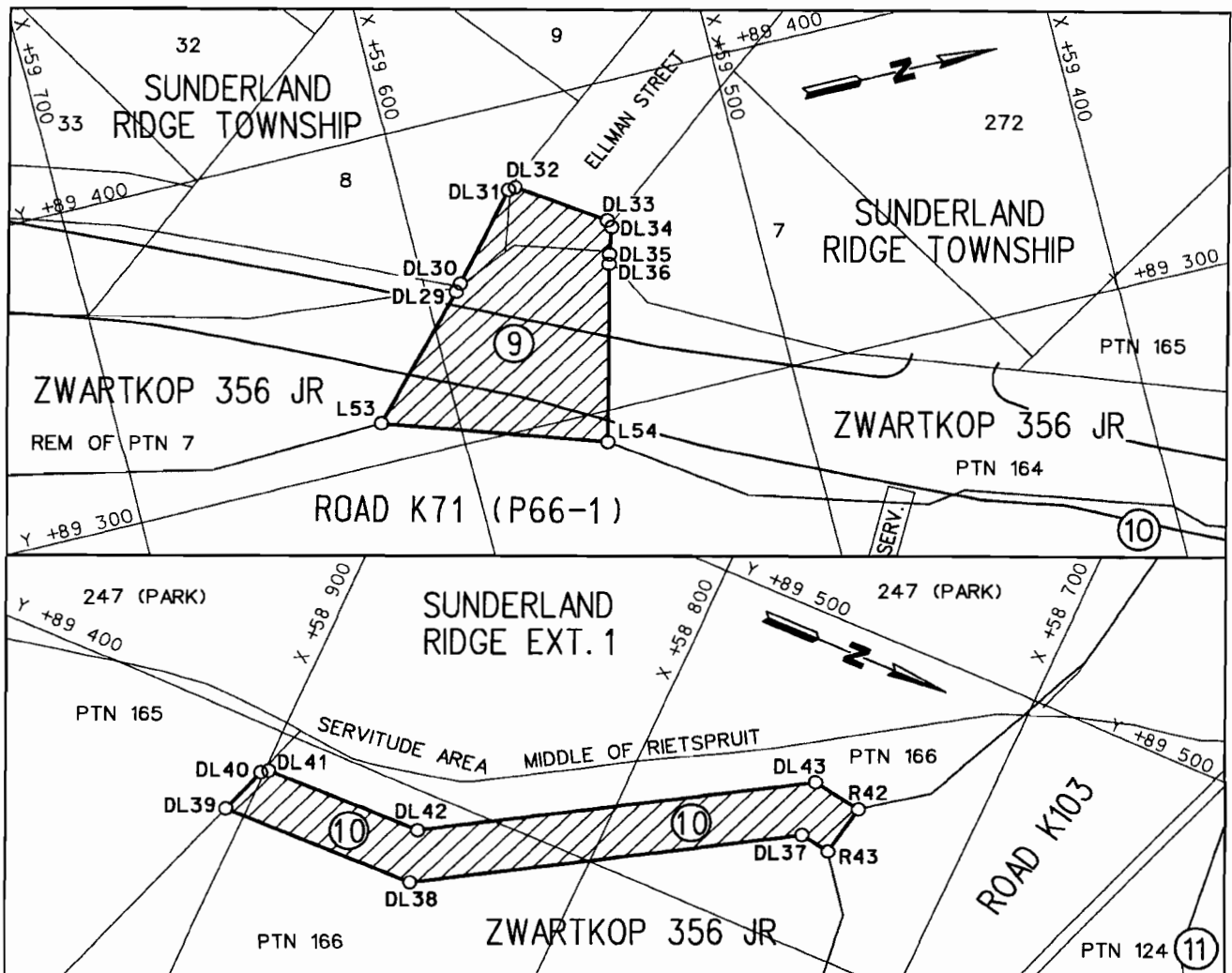
Reference: 2/1/1/2/3/1-K71 (1)

MEC Resolution 005 Dated 22 October 2007









VERWYSINGS / REFERENCE

GEPROKLAAMEERDE TOEGANGSPAARIE
PROCLAIMED ACCESS ROADS



- DIE FIGURE : (1) L16,DL1-DL14,L17,L16.
 (2) R18,R19,DR1-DR4,R18.
 (3) L32,DR5-DR10,L33,L32.
 (4) R42,R43,DR5-DR7,R42.
 (5) DL11-DL12,4217,4218,DL17-DL20,DL11.
 (7) DR15-DR26,DR15.
 (8) R52,R53,DR27-DR33,R52.
 (9) L53,DL29-DL36,L54,L53.
 (10) DL37-DL43,R42,R43,DL37.

VERTEENWOORDIG DIE PROKLAMASIE VAN TOEGANGSPAARIE OOR DIE RESTANT VAN GEDEELTE 13 VAN DIE PLAAS BRAKFRONTEIN 399 JR, 'N GEDEELTE VAN PROVINSIALE PAD K71(P66-1) IN CELTISDAL UITBREIDING 20, DIE RESTANT VAN DIE PLAAS HONEYPARK 437 JR, DIE RESTANT VAN GEDEELTE 7, GEDEELTES 11,12 VAN DIE PLAAS SWARTKOP 383 JR, GEDEELTE 2 VAN HOEWE 236, HOEWES 135,139,140,143, 144,147,148,151,152,154,155,156,129,128,127,126 EN GEDEELTES VAN POOLE LAAN EN MIMOSA LAAN IN RASLOUW LANDBOU HOEWES, GEDEELTE 7 EN GEDEELTE 166 VAN DIE PLAAS ZWARTKOP 356 JR EN ERF 8 EN 'N GEDEELTE VAN ELLMAN STRAAT IN SLUNDERLAND RIDGE DORP, SOOS BEDOEL BY AFKONDIGING DAARVAN IN DIE PROVINSIALE KOERANT EN IN DETAIL GETOON OP PLANNE GRP 04/16/2Exp - 5Exp EN 7Exp

- THE FIGURES : (1) L16,DL1-DL14,L17,L16.
 (2) R18,R19,DR1-DR4,R18.
 (3) L32,DR5-DR10,L33,L32.
 (4) R42,R43,DR5-DR7,R42.
 (5) DL11-DL12,4217,4218,DL17-DL20,DL11.
 (7) DR15-DR26,DR15.
 (8) R52,R53,DR27-DR33,R52.
 (9) L53,DL29-DL36,L54,L53.
 (10) DL37-DL43,R42,R43,DL37.

REPRESENT THE PROCLAMATION OF ACCESS ROADS OVER THE REMAINDER OF PORTION 13 OF THE FARM BRAKFORTEIN 399 JR, A PORTION OF PROVINCIAL ROAD K71(P66-1) IN CELTISDAL EXTENSION 20, THE REMAINDER OF THE FARM HONEYPARK 437 JR, THE REMAINDER OF PORTION 7, PORTIONS 11,12 OF THE FARM SWARTKOP 383 JR, PORTION 2 OF HOLDING 236, HOLDINGS 135,139,140,143,144,147,148,151,152,154, 155,156,129,128, 127,126 AND PORTIONS OF POOLE AVENUE AND MIMOSA AVENUE IN RASLOUW AGRICULTURAL HOLDINGS, PORTION 7 AND 166 OF THE FARM ZWARTKOP 356 JR AND ERVE 8 AND A PORTION OF ELLMAN STREET IN SUNDERLAND RIDGE TOWNSHIP, AS INTENDED BY THE PUBLICATION THEREOF IN THE PROVINCIAL GAZETTE AND SHOWN IN DETAIL ON PLANS GRP 04/16/2Exp - 5Exp AND 7Exp

BUNDEL NR. / FILE NO. 2/1/1/2/3/1-K71(1)

KOÖRDINATE LYS/CO-ORDINATE LIST WG 29° KONST./CONST. Y= +/- 0.000 X= +2 800 000.000

4217	+89697.010	+60518.210	DL12	+89681.471	+61431.301	DR8	+89054.967	+61476.377
4218	+89681.010	+60517.940	DL17	+89665.675	+61418.710	DR9	+89153.436	+61228.317
L16	+89437.925	+63549.110	DL18	+89664.384	+61421.015	DR10	+89161.128	+61225.187
L17	+89427.382	+63495.875	DL19	+89657.616	+61425.315	DR11	+89141.032	+61216.213
L32	+89402.087	+62075.172	DL20	+89657.719	+61426.732	DR12	+89144.297	+61224.236
L33	+89404.561	+62008.230	DL29	+89346.977	+59591.336	DR13	+89046.383	+61470.896
L53	+89312.434	+59622.563	DL30	+89349.251	+59589.380	DR14	+89047.199	+61472.902
L54	+89290.446	+59558.934	DL31	+89374.269	+59568.890	DR15	+89172.246	+61209.479
R18	+89335.626	+63547.967	DL32	+89374.576	+59566.707	DR16	+89167.569	+61200.825
R19	+89323.165	+63489.004	DL33	+89357.824	+59542.533	DR17	+89181.104	+61116.503
R42	+89310.867	+62034.363	DL34	+89355.542	+59541.758	DR18	+89183.654	+61077.811
R43	+89312.193	+61966.449	DL35	+89347.368	+59544.382	DR19	+89171.664	+60642.491
R52	+89338.418	+60342.348	DL36	+89344.486	+59545.209	DR20	+89177.442	+60637.319
R53	+89318.690	+60291.948	DL37	+89433.348	+58745.452	DR21	+89149.489	+60633.435
R42	+89447.520	+58733.580	DL38	+89372.441	+58845.834	DR22	+89155.597	+60640.259
R43	+89431.760	+58736.320	DL39	+89371.132	+58905.930	DR23	+89167.660	+61078.251
DL1	+89448.325	+63536.960	DL40	+89385.835	+58900.939	DR24	+89165.306	+61113.967
DL2	+89449.013	+63534.348	DL41	+89387.288	+58898.957	DR25	+89152.450	+61194.061
DL3	+89444.687	+63512.152	DL42	+89388.344	+58850.468	DR26	+89145.808	+61197.651
DL4	+89443.268	+63509.695	DL43	+89450.136	+58748.627	DR27	+89210.241	+60304.987
DL5	+89448.534	+62078.755	DR1	+89297.735	+63502.046	DR28	+89113.049	+60310.813
DL6	+89450.062	+62077.370	DR2	+89294.900	+63502.699	DR29	+89107.978	+60310.113
DL7	+89450.738	+62046.170	DR3	+89301.080	+63532.839	DR30	+89106.771	+60319.471
DL8	+89449.401	+62044.057	DR4	+89303.944	+63533.493	DR31	+89195.120	+60331.982
DL9	+89448.429	+62043.623	DR5	+89267.256	+61962.778	DR32	+89198.099	+60332.056
DL10	+89445.899	+62042.060	DR6	+89253.973	+61992.471	DR33	+89238.427	+60328.352
DL11	+89686.848	+61439.748	DR7	+89266.568	+61998.106			

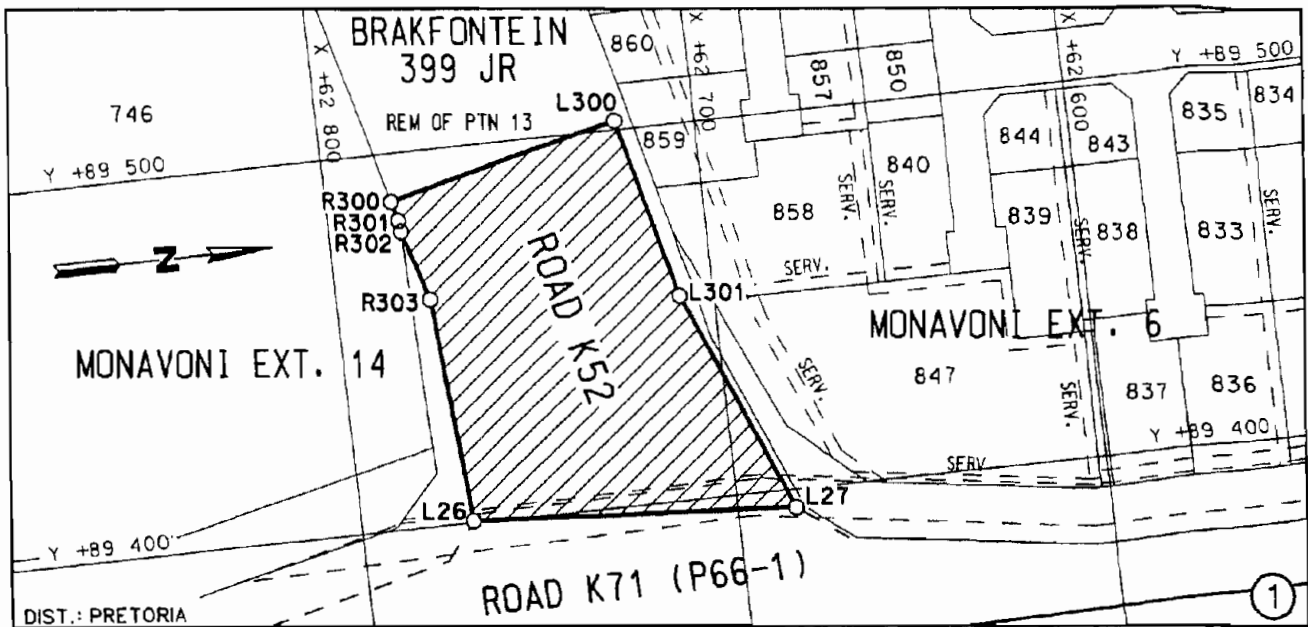
NOTICE 5333 OF 2007**PROCLAMATION OF A PORTION OF PROVINCIAL ROAD K52: DISTRICT: PRETORIA**

In terms of section 11(1) (b) of the Gauteng Transport Infrastructure Act, 2001 (Act No. 8 of 2001) the MEC for Public Transport, Roads and Works hereby proclaims that a Provincial road with varying widths exists over the remainder of Portion 13 of the farm Brakfontein 399 JR as indicated on the accompanying sketch plan.

In terms of section 23(6) of the aforementioned act, it is hereby declared that boundary beacons, demarcating the widths of the portion of the road in question have been placed on the land and that plan GRP 04/16/3 Exp indicating the land encroached upon by the said road is available for inspection by any interested person in the Plan Room of the Department of Public Transport, Roads and Works, Sage Life Building, 41 Simmonds Street, Johannesburg.

Reference: 2/1/1/2/3/1-K71 (1)

MEC Resolution 005 Dated 22 October 2007



VERWYSINGS / REFERENCE

GEPROKLAAMEERDE PAD
PROCLAIMED ROAD



DIE FIGURE : L26,R303-R300,L300,L301,L27,L26.
VERTEENWOORDIG DIE PROKLAMASIE VAN DIE BETROKKE GEDEELTE VAN PROVINSIALE PAD K52 OOR DIE RESTANT VAN GEDEELTE 13 VAN DIE PLAAS BRAKFORTEIN 399 JR SOOS BEDOEL BY AFKONDIGING DAARVAN IN DIE PROVINSIALE KOERANT EN IN DETAIL GETOON OP PLAN GRP 04/16/3Exp

THE FIGURES : L26,R303-R300,L300,L301,L27,L26.
REPRESENT THE PROCLAMATION OF THE PORTION CONCERNED OF PROVINCIAL ROAD K52 OVER THE REMAINDER OF PORTION 13 OF THE FARM BRAKFORTEIN 399 JR AS INTENDED BY THE PUBLICATION THEREOF IN THE PROVINCIAL GAZETTE AND SHOWN IN DETAIL ON PLAN GRP 04/16/3Exp

BUNDEL NR. / FILE NO. 2/1/1/2/3/1-K71(1)

KOÖRDINATE LYS/CO-ORDINATE LIST WG 29° KONST./CONST. Y- +/- 0.000 X- +2 800 000.000

L26	+89400.515	+62769.973	L301	+89454.712	+62709.201	R302	+89479.171	+62780.303
L27	+89395.192	+62684.093	R300	+89487.293	+62782.133	R303	+89460.593	+62774.553
L300	+89502.477	+62721.081	R301	+89482.118	+62780.740			

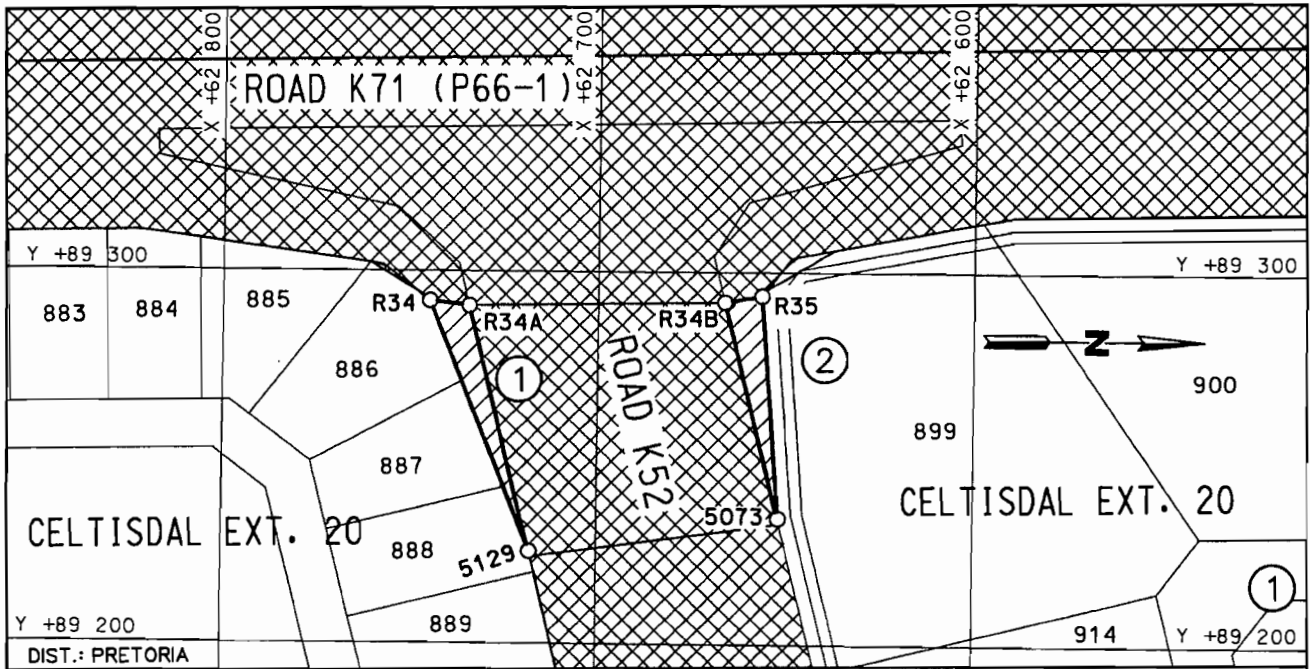
NOTICE 5334 OF 2007**INCREASE IN WIDTH OF A PORTION OF PROVINCIAL ROAD K52: DISTRICT PRETORIA**

In terms of section 11(2) of the Gauteng Transport Infrastructure Act, 2001 (Act No. 8 of 2001) the MEC for Public Transport, Roads and Works hereby proclaims the increase of the width of a portion of provincial road K52 in Celtisdal Extension 20 as indicated on the accompanying sketch plan.



In terms of section 23(6) of the aforementioned act, it is hereby declared that boundary beacons, demarcating the increase in the width of the portion of the road in question have been placed on the land and that plan GRP 04/16/3 Exp indicating the land encroached upon by the said road adjustment is available for inspection by any interested person in the Plan Room of the Department of Public Transport, Roads and Works, Sage Life Building, 41 Simmonds Street, Johannesburg.

Reference: 2/1/1/2/3/1-K71 (1)

MEC Resolution 005 Dated 22 October 2007



VERWYSINGS / REFERENCE

- GEPROKLAMEERDE VERMEERDERING IN BREEDTE VAN PROVINSIALE PAD
 PROCLAIMED INCREASE IN WIDTH OF PROVINCIAL ROAD 
- BESTAANDE PAD
 EXISTING ROAD 

DIE FIGURE : (1) R34,R34A,5129,R34.
 (2) R34B,R35,5073,R34B.
 VERTEENWOORDIG DIE GEPROKLAMEERDE VERMEERDERING
 IN BREEDTE VAN 'N GEDEELTE VAN PROVINSIALE PAD K52
 IN CELTISDAL UITBREIDING 20 SOOS BEDOEL BY DIE
 AFKONDIGING DAARVAN IN DIE PROVINSIALE KOERANT EN IN
 DETAIL GETOON OP PLAN GRP 04/16/3Exp

THE FIGURES : (1) R34,R34A,5129,R34.
 (2) R34B,R35,5073,R34B.
 REPRESENT THE PROCLAIMED INCREASE IN WIDTH OF A PORTION
 OF PROVINCIAL ROAD K52 IN CELTISDAL EXTENSION 20 AS
 INTENDED BY THE PUBLICATION THEREOF IN THE PROVINCIAL
 GAZETTE AND SHOWN IN DETAIL ON PLAN GRP 04/16/3Exp

BUNDEL NR. / FILE NO. 2/1/1/2/3/1-K71(1)

KOÖRDINATE LYS/CO-ORDINATE LIST WG 29° KONST./CONST. Y= +/- 0.000 X= +2 800 000.000

5073	+89233.860	+62651.780	R34	+89290.580	+62744.626	R34B	+89292.021	+62666.466
5129	+89224.750	+62717.940	R34A	+89290.765	+62734.579	R35	+89292.205	+62656.470

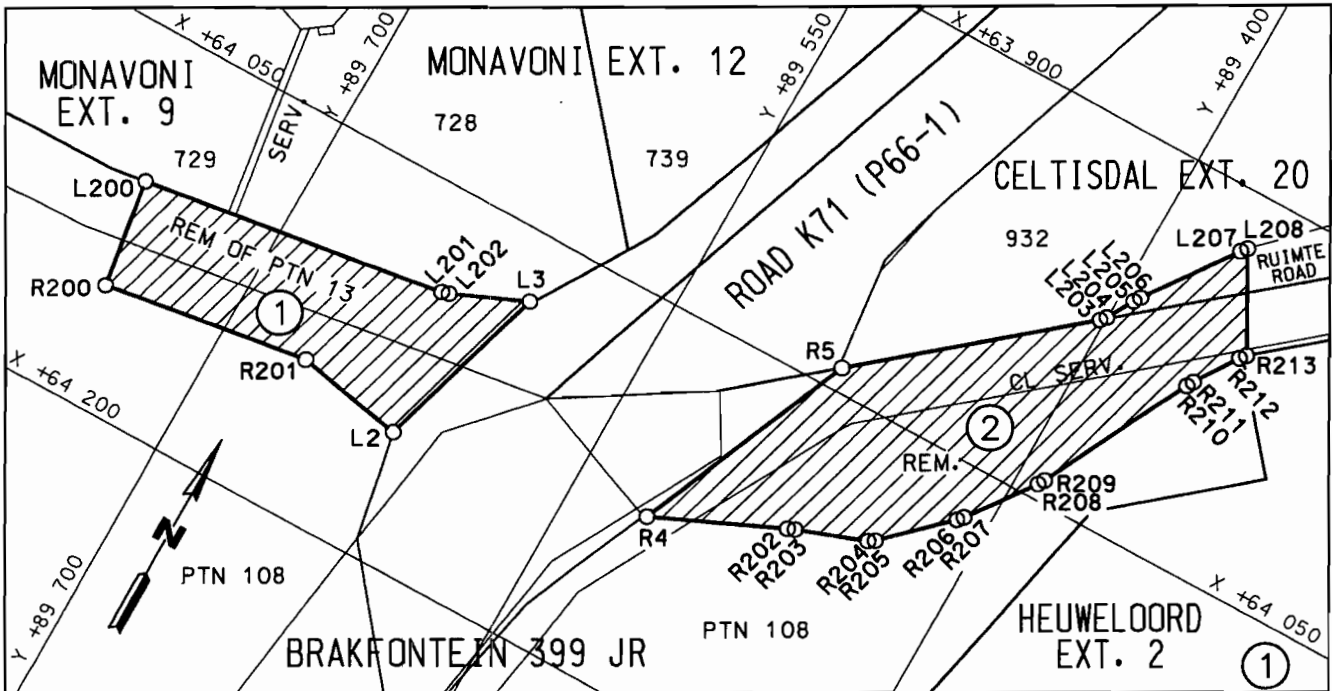
NOTICE 5335 OF 2007**INCREASE IN WIDTH OF A PORTION OF PROVINCIAL ROAD P102-1:
DISTRICT PRETORIA**

In terms of section 11(2) of the Gauteng Transport Infrastructure Act, 2001 (Act No. 8 of 2001) the MEC for Public Transport, Roads and Works hereby proclaims the increase of the width of provincial road P102-1 over the remainder of Portion 13, Portion 108 and the remainder of the farm Brakfontein 399 JR as well as a portion of Ruimte Road in Celtisdal Extension 20 as indicated on the accompanying sketch plan.

In terms of section 23(6) of the aforementioned act, it is hereby declared that boundary beacons, demarcating the increase in the width of the portion of the road in question have been placed on the land and that plan GRP 04/16/4 Exp indicating the land encroached upon by the said road adjustment is available for inspection by any interested person in the Plan Room of the Department of Public Transport, Roads and Works, Sage Life Building, 41 Simmonds Street, Johannesburg.

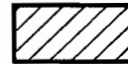
Reference: 2/1/1/2/3/1-K71 (1)

MEC Resolution 005 Dated 22 October 2007



VERWYSINGS / REFERENCE

GEPROKLAAMEERDE VERMEERDERING IN BREEDTE VAN PROVINSIALE PAD
 PROCLAIMED INCREASE IN WIDTH OF PROVINCIAL ROAD



DIE FIGURE : (1) L2,R201,R200,L200-L202,L3,L2.
 (2) R4,R5,L203-L208,R213-R202,R4.
 VERTEENWOORDIG DIE GEPROKLAAMEERDE VERMEERDERING
 IN BREEDTE VAN PROVINSIALE PAD P102-1 OOR DIE RESTANT
 VAN GEDEELTE 13, GEDEELTE 108 EN DIE RESTANT VAN DIE
 PLAAS BRAKFORTEIN 399 JR ASOOK 'N GEDEELTE VAN RUIMTE
 WEG IN CELTISDAL UITBREIDING 20 SOOS BEDOEL BY
 AFKONDIGING DAARVAN IN DIE PROVINSIALE KOERANT EN IN
 DETAIL GETOON OP PLAN GRP 04/16/4Exp

THE FIGURES : (1) L2,R201,R200,L200-L202,L3,L2.
 (2) R4,R5,L203-L208,R213-R202,R4.
 REPRESENT THE PROCLAIMED INCREASE IN THE WIDTH OF
 PROVINCIAL ROAD P102-1 OVER THE REMAINDER OF PORTION
 13, PORTION 108 AND THE REMAINDER OF THE FARM
 BRAKFORTEIN 399 JR AS WELL AS A PORTION OF RUIMTE
 ROAD IN CELTISDAL EXTENSION 20 AS INTENDED BY THE
 PUBLICATION THEREOF IN THE PROVINCIAL GAZETTE AND
 SHOWN IN DETAIL ON PLAN GRP 04/16/4Exp

BUNDEL NR. / FILE NO. 2/1/1/2/3/1-k71(1)

KOÖRDINATE LYS/CO-ORDINATE LIST WG 29°KONST./CONST. Y= +/- 0.000 X= +2 800 000.000

L2	+89621.680	+64148.590	L207	+89367.648	+63923.650	R205	+89435.641	+64094.889
L3	+89600.957	+64076.786	L208	+89365.728	+63921.361	R206	+89411.949	+64072.031
L200	+89756.218	+64107.846	R4	+89517.969	+64129.471	R207	+89409.989	+64069.776
L201	+89632.935	+64090.193	R5	+89480.929	+64040.668	R208	+89391.161	+64043.854
L202	+89630.073	+64089.384	R200	+89749.808	+64152.048	R209	+89389.601	+64041.302
L203	+89402.111	+63974.832	R201	+89665.794	+64139.864	R210	+89359.129	+63981.258
L204	+89400.215	+63972.568	R202	+89467.871	+64107.219	R211	+89357.638	+63978.659
L205	+89393.925	+63961.572	R203	+89465.088	+64106.104	R212	+89346.692	+63961.671
L206	+89392.322	+63959.040	R204	+89438.132	+64096.436	R213	+89344.729	+63959.448

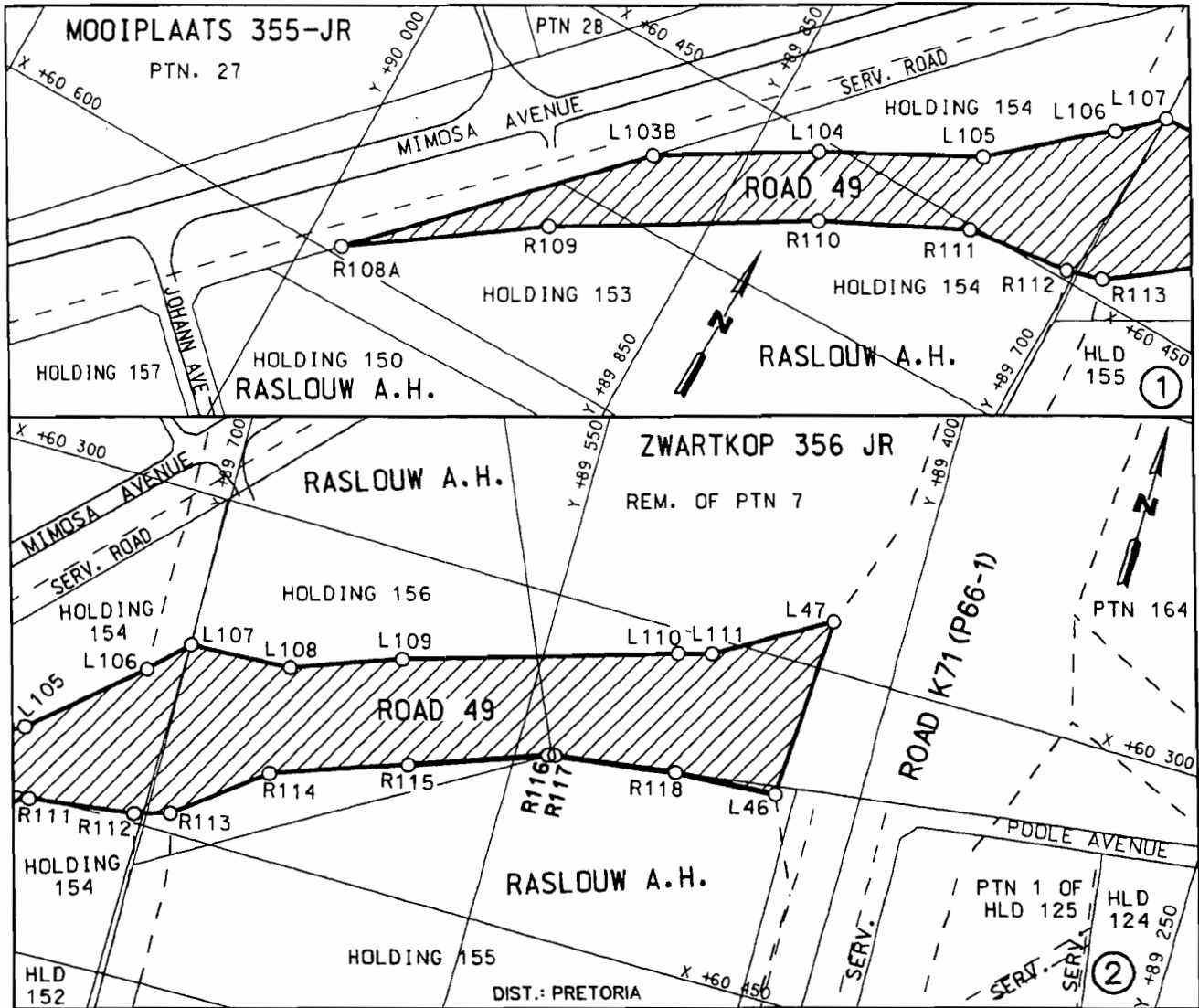
NOTICE 5336 OF 2007**PROCLAMATION OF THE DEVIATION OF A PORTION OF PROVINCIAL ROAD 49
DISTRICT: PRETORIA**

In terms of section 11(1)(d) of the Gauteng Transport Infrastructure Act, 2001 (Act No. 8 of 2001) the MEC for Public Transport, Roads and Works hereby proclaims the deviation of a portion of provincial road 49 over the remainder of Portion 7 of the farm Zwartkop 356 JR and holdings 155, 156, 154 and 153 in Raslouw Agricultural Holdings as indicated on the accompanying sketch plans.

In terms of section 23(6) of the aforementioned act, it is hereby declared that boundary beacons, demarcating the deviation of the portion of the road in question have been placed on the land and that plans GRP 04/16/4 Exp and 7 Exp indicating the land encroached upon by the said road adjustment is available for inspection by any interested person in the Plan Room of the Department of Public Transport, Roads and Works, Sage Life Building, 41 Simmonds Street, Johannesburg.

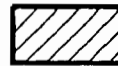
Reference: 2/1/1/2/3/1-K71 (1)

MEC Resolution 005 Dated 22 October 2007



VERWYSINGS / REFERENCE

GEPROKLAMEERDE VERLEGGING VAN PROVINSIALE PAD
 PROCLAIMED DEVIATION OF PROVINCIAL ROAD



DIE FIGUUR : L46.R118-R109.R108A.L103B.L104-L111.L47.L46.
 VERTEENWOORDIG DIE GEPROKLAMEERDE VERLEGGING
 VAN DIE BETROKKE GEDEELTE VAN PROVINSIALE PAD 49
 OOR DIE RESTANT VAN GEDEELTE 7 VAN DIE PLAAS
 ZWARTKOP 356 JR. HOEWES 155, 156, 154 EN 153 IN
 RASLOUW LANDBOU HOEWES SOOS BEDOEL BY AFKONDIGING
 DAARVAN IN DIE PROVINSIALE KOERANT EN IN DETAIL GETOON
 OP PLANNE GRP 04/16/4Exp EN 7Exp

THE FIGURE : L46.R118-R109.R108A.L103B.L104-L111.L47.L46.
 REPRESENTS THE PROCLAIMED DEVIATION OF THE PORTION
 CONCERNED OF PROVINCIAL ROAD 49 OVER THE
 REMAINDER OF PORTION 7 OF THE FARM ZWARTKOP 356
 JR AND HOLDINGS 155, 156, 154 AND 153 IN RASLOUW
 AGRICULTURAL HOLDINGS AS INTENDED BY THE
 PUBLICATION THEREOF IN THE PROVINCIAL GAZETTE
 AND SHOWN IN DETAIL ON PLANS
 GRP 04/16/4Exp AND 7Exp

BUNDEL NR. / FILE NO. 2/1/1/2/3/1-K71(1)

KOÖRDINATE LYS/CO-ORDINATE LIST WG 29°KONST./CONST. Y- +/- 0.000 X- +2 800 000.000								
L46	+89436.240	+60359.694	L109	+89608.463	+60346.512	R112	+89703.851	+60445.758
L47	+89431.991	+60278.384	L110	+89493.594	+60310.563	R113	+89688.566	+60441.215
L103B	+89886.287	+60492.782	L111	+89479.131	+60306.657	R114	+89651.209	+60411.953
L104	+89824.280	+60455.494	R108A	+89984.940	+60595.516	R115	+89593.617	+60391.393
L105	+89759.842	+60421.366	R109	+89910.747	+60542.470	R116	+89536.080	+60370.210
L106	+89715.514	+60382.046	R110	+89809.851	+60481.797	R117	+89533.190	+60369.490
L107	+89699.786	+60366.129	R111	+89749.511	+60451.743	R118	+89480.710	+60362.190
L108	+89654.818	+60363.906						