

*THE PROVINCE OF  
GAUTENG*

*DIE PROVINSIE  
GAUTENG*

**Provincial Gazette Extraordinary  
Buitengewone Provinsiale Koerant**

**Vol. 14**

PRETORIA, 24 JUNE 2008  
JUNIE

**No. 169**

---

**CONTENTS • INHOUD**

<i>No.</i>		<i>Page No.</i>	<i>Gazette No.</i>
<b>GENERAL NOTICES</b>			
2431	Gauteng Transport Infrastructure Act (8/2001): Proclamation of the increase in width of portions of Provincial Roads K60 and K73: District Randburg.....	3	169
2432	do.: Taking over of portions of Provincial Roads 48 and 734 by the Dinokeng Land Owners Association Management Company.....	6	169

---

---

## GENERAL NOTICES

---

### NOTICE 2431 OF 2008

#### **PROCLAMATION OF THE INCREASE IN WIDTH OF PORTIONS OF PROVINCIAL ROADS K60 AND K73: DISTRICT RANDBURG**

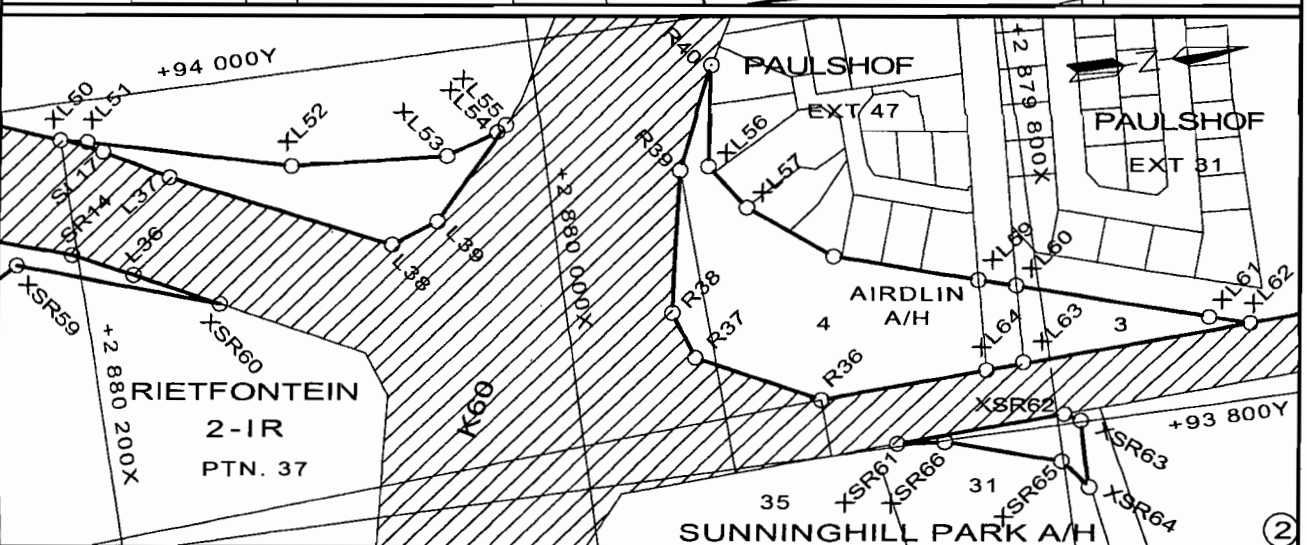
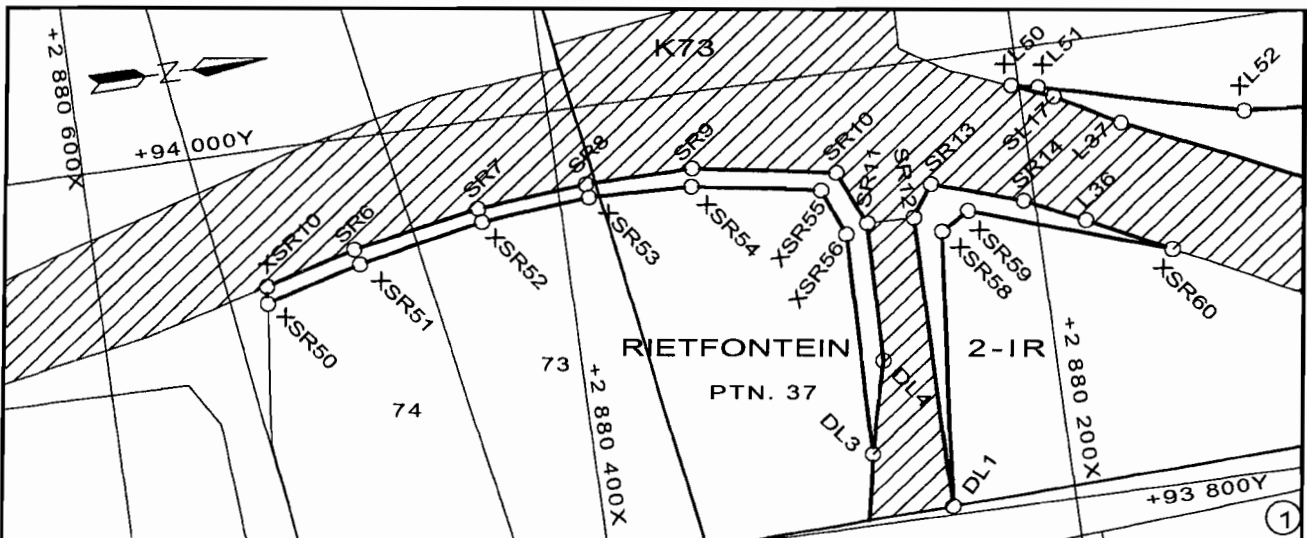
In terms of section 11(2) of the Gauteng Transport Infrastructure Act, 2001 (Act No. 8 of 2001) the MEC for Public Transport, Roads and Works hereby proclaims the increase in width of provincial roads K60 and K73 over Holdings 31, 73 and 74 of Sunninghill Agricultural Holdings, Portion 37 of the farm Rietfontein 2 IR and Holdings 3 and 4 of Airdlin Agricultural Holdings as indicated on the accompanying sketch plans.

In terms of section 23 (6) of the aforementioned Act, it is hereby declared that boundary beacons, demarcating the increase in width of the portions of the roads in question have been placed on the land and that plans PRS 74/59/3V & 6V indicating the land encroached upon by the said road adjustments are available for inspection by any interested person, at the offices of the Department of Public Transport, Roads and Works, Sage Life Building, first floor, South Towers, 41 Simmonds Street, Johannesburg.

**MEC Resolution: 002 dated 15 May 2008**

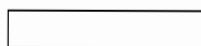
**Reference: 2/1/1/2/3/1 – K60**

**2/1/1/2/3/1 – K73 (2)**

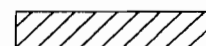


**VERWYSING / REFERENCE**

PAD VERBREED  
ROAD WIDENED



BESTAANDE PAD  
EXISTING ROAD



- DIE FIGURE** (1) XSR10, SR6-SR11, DL4, DL3, XSR56-XSR50, XSR10  
 (2) SR12, SR13, SR14, L36, XSR60-XSR58, DL1, SR12  
 (3) XL50, XL51-XL55, L39-L37, SL17, XL50  
 (4) R40, XL56-XL64, R36-R39, R40  
 (5) XSR61, XSR62-XSR66, XSR61

VERTEENWOORDIG DIE PROKLAMASIE VAN DIE VERMEERDERING IN BREEDTE VAN PROVINSIALE PAAIE K60 & K73 OOR HOEWES 31, 73 & 74 VAN SUNNINGHILL PARK A/H, GED. 37 VAN DIE PLAAS RIETFONTEIN 2-IR EN HOEWES 3 & 4 VAN AIRDLIN A/H SOOS BEDOEL BY AFKONDIGING DAARVAN IN DIE PROVINSIALE KOERANT EN IN DETAIL GETOON OP PLANNE PRS 74/59/3V&6V

- THE FIGURES** (1) XSR10, SR6-SR11, DL4, DL3, XSR56-XSR50, XSR10  
 (2) SR12, SR13, SR14, L36, XSR60-XSR58, DL1, SR12  
 (3) XL50, XL51-XL55, L39-L37, SL17, XL50  
 (4) R40, XL56-XL64, R36-R39, R40  
 (5) XSR61, XSR62-XSR66, XSR61

REPRESENT THE PROCLAMATION OF THE INCREASE IN WIDTH OF PROVINCIAL ROADS K60 & K73 OVER HOLDINGS 31, 73 & 74 OF SUNNINGHILL PARK A/H, PTN. 37 OF THE FARM RIETFONTEIN 2-IR AND HOLDINGS 3 & 4 OF AIRDLIN A/H AS INTENDED BY PUBLICATION THEREOF IN THE PROVINCIAL GAZETTE AND SHOWN IN DETAIL ON PLANS PRS74/59/3V&6V

BUNDEL NR. / FILE NO. 2/1/1/2/3/1-K73

KOÖRDINATE LYS / CO-ORDINATE LIST L <sub>0</sub> 29° KONST. / CONST. Y = ± 0.000 X = +2 800 000.000								
L36	+93 920.730	+80 179.750	SR6	+93 951.180	+80 489.130	XL64	+93 828.378	+79 827.557
L37	+93 961.260	+80 159.080	SR7	+93 961.740	+80 434.910	XSR10	+93 940.190	+80 528.030
L38	+93 918.570	+80 068.960	SR8	+93 965.980	+80 387.910	XSR50	+93 932.693	+80 528.818
L39	+93 925.970	+80 048.710	SR9	+93 966.580	+80 342.020	XSR51	+93 944.365	+80 487.507
R36	+93 825.270	+79 897.750	XL50	+93 983.850	+80 203.140	XSR52	+93 955.792	+80 434.065
R37	+93 851.180	+79 948.270	XL51	+93 981.620	+80 191.850	XSR53	+93 960.004	+80 387.371
R38	+93 872.340	+79 955.240	XL52	+93 958.940	+80 106.880	XSR54	+93 958.695	+80 343.370
R39	+93 933.980	+79 943.700	XL53	+93 954.070	+80 041.060	XSR55	+93 949.417	+80 289.174
R40	+93 978.500	+79 924.350	XL54	+93 961.690	+80 018.830	XSR56	+93 928.907	+80 281.354
DL1	+93 803.120	+80 252.290	XL55	+93 964.187	+80 014.833	XSR58	+93 924.630	+80 240.850
DL3	+93 831.240	+80 282.900	XL56	+93 934.140	+79 931.550	XSR59	+93 931.820	+80 228.684
DL4	+93 871.450	+80 273.060	XL57	+93 913.830	+79 917.760	XSR60	+93 903.070	+80 145.150
SL17	+93 976.560	+80 185.780	XL58	+93 887.370	+79 884.220	XSR61	+93 801.348	+79 868.408
SR10	+93 956.290	+80 281.910	XL59	+93 868.400	+79 824.820	XSR62	+93 804.539	+79 797.048
SR11	+93 932.470	+80 272.010	XL60	+93 863.840	+79 809.330	XSR63	+93 800.033	+79 792.119
SR12	+93 932.170	+80 252.010	XL61	+93 838.660	+79 731.580	XSR64	+93 771.060	+79 790.820
SR13	+93 945.670	+80 242.720	XL62	+93 833.500	+79 714.220	XSR65	+93 784.090	+79 800.790
SR14	+93 932.940	+80 204.570	XL63	+93 829.403	+79 804.988	XSR66	+93 799.300	+79 848.420

**NOTICE 2432 OF 2008****TAKING OVER OF PORTIONS OF PROVINCIAL ROADS 48 AND 734 BY THE  
DINOKENG LAND OWNERS ASSOCIATION MANAGEMENT COMPANY:  
GAUTENG PROVINCE**

**In terms of section 51(2) (a) of the Gauteng Transport Infrastructure Act, 2001 (Act No. 8 of 2001) it is hereby notified for general information that in terms of an agreement entered into between the Dinokeng Land Owners Association Management Company and the Department of Public Transport, Roads and Works, the aforementioned Company takes over all responsibilities for or in relation to portions of provincial roads 48 and 734, as indicated on the accompanying sketch plan and that the portions of the roads are no longer provincial roads for the purposes of the said Act as from the date of this Notice, provided that they remain open for the use of the public, subject to certain access control measures laid down by the said Company.**

**Details in the above regard can be obtained from the offices of the Department of Public Transport, Roads and Works at Sage Life Building, 41 Simmonds Street, Johannesburg or Private Bag X83, Marshalltown 2107, Tel: (011) 355-7264 Fax: (011) 355-7235.**

**Reference: 2/2/13/1-1**



**VERWYSING / REFERENCE**

PAAIE OORGEDRA NA DINOKENG  
ROADS TRASFERED TO DINOKENG



Toegang Beheer Hekke  
Access Control Gates



**KOÖRDINATE LYS / CO-ORDINATE LIST**

Portion 27 of the farm Klipdrif 90 JR	28° 18' 34"E	25° 22' 42"S
Portion 42 of the farm Klipdrif 121 JR	28° 18' 23"E	25° 24' 40"S
Portion 16 of the farm Klipdrif 90 JR	28° 22' 15"E	25° 25' 05"S
Portion 16 of the farm Klipdrif 121 JR	28° 21' 30"E	25° 24' 41"S