

***THE PROVINCE OF
GAUTENG***

***DIE PROVINSIE
GAUTENG***

**Provincial Gazette Extraordinary
Buitengewone Provinsiale Koerant**

Vol. 14

**PRETORIA, 16 JULY 2008
JULIE**

No. 191

CONTENTS • INHOUD

<i>No.</i>	<i>Page No.</i>	<i>Gazette No.</i>
GENERAL NOTICE		
2647 Gauteng Transport Infrastructure Act (8/2001): Proclamation of a portion of Provincial Road K50 and the closing of a portion of Provincial Road 321: District Pretoria.....	3	191

GENERAL NOTICE

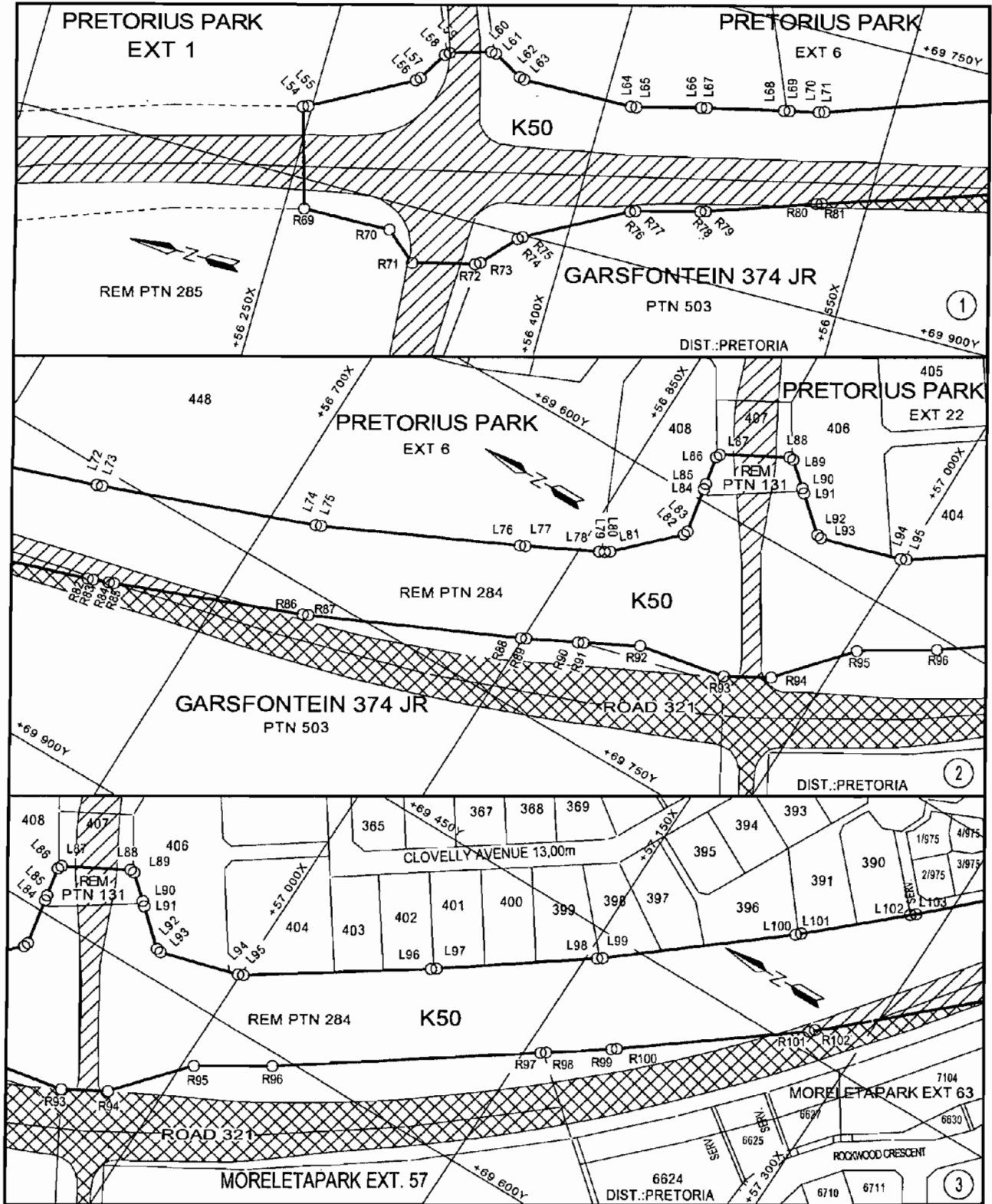
NOTICE 2647 OF 2008

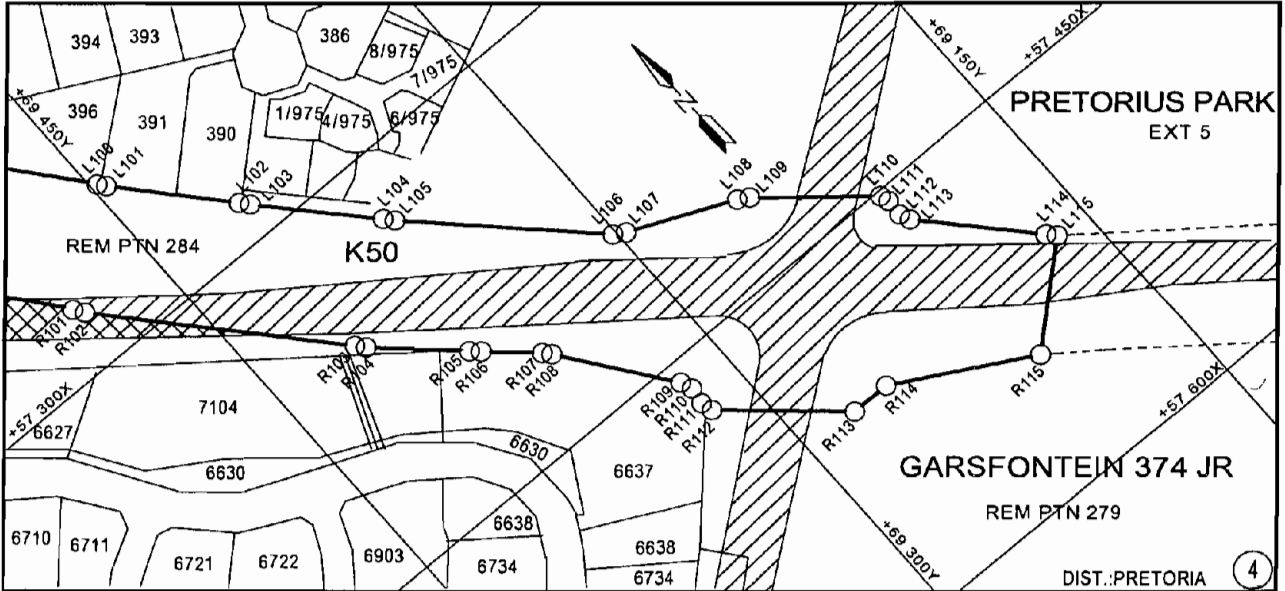
PROCLAMATION OF A PORTION OF PROVINCIAL ROAD K50 AND THE CLOSING OF A PORTION OF PROVINCIAL ROAD 321: DISTRICT PRETORIA

In terms of section 11(1)(b) and (d) of the Gauteng Transport Infrastructure Act, 2001 (Act No 8 of 2001) the MEC hereby proclaims that a portion of provincial road K 50 with varying widths, exists on the Reminders of Portions 131, 284, 285 and 279 of the farm Garsfontein 374 JR in consequence of which a portion of provincial road 321 is closed, as indicated on the accompanying sketch plans.

In terms of section 23(b) of the aforementioned Act the land taken up by the said proclaimed road has been demarcated by beacons and is indicated in detail on plans GRP 04/17//2 Exp – 3 Exp which are available for inspection by any interested person during office hours at the Department of Public Transport, Roads and Works at Sage Life Building, 41 Simmonds Street, Johannesburg, Private bag X83 Marshalltown 2107, Tel (011) 355-7264 Fax (011) 355-7235.

MEC Resolution 003 dated 22 February 2008
Reference 2/1/1/2/3/1 – K50 (2)





VERWYSINGS / REFERENCE

PAD GEPROKLAAMEER
ROAD PROCLAIMED



BESTAANDE PAD
EXISTING ROAD



PAD GESLUIT
ROAD CLOSED



DIE FIGUUR : L54-L115, R115-R69, L54

VERTEENWOORDIG DIE PROKLAMASIE VAN DIE BETROKKE GEDEELTE VAN PROVINSIALE PAD K50 OOR RESTANT VAN GEDEELTES 131, 284, 285 EN 279 VAN DIE PLAAS GARSFONTEIN 374 JR EN DIE SLUITING VAN 'N GEDEELTE VAN PROVINSIALE PAD 321 SOOS BEDOEL BY DIE AFKONDIGING DAARVAN IN DIE PROVINSIALE KOERANT EN IN DETAIL GETOON OP PLANNE GRP 04/17/2Exp - 3Exp

THE FIGURE : L54-L115, R115-R69, L54

REPRESENTS THE PROCLAMATION OF THE PORTION CONCERNED OF PROVINCIAL ROAD K50 OVER REMAINDER OF PORTIONS 131, 284, 285 AND 279 OF THE FARM GARSFONTEIN 374 JR AND THE CLOSING OF A PORTION OF PROVINCIAL ROAD 321 AS INTENDED BY PUBLICATION THEREOF IN THE PROVINCIAL GAZETTE AND SHOWN IN DETAIL ON PLANS GRP 04/17/2Exp - 3Exp

BUNDEL NR. / FILE NO. 2/1/1/2/3/1-K50(2)

KOÖRDINATE LYS/CO-ORDINATE LIST WG 29° KONST./CONST. Y = ± 0.000 X = +2 800 000.000

L54	+69 862.350	+2 856 245.235	L77	+69 670.255	+2 856 824.388	L100	+69 397.658	+2 857 237.883
L55	+69 861.259	+2 856 248.005	L78	+69 652.647	+2 856 859.585	L101	+69 395.702	+2 857 240.157
L56	+69 832.982	+2 856 299.623	L79	+69 651.305	+2 856 862.268	L102	+69 357.889	+2 857 281.855
L57	+69 830.966	+2 856 301.696	L80	+69 651.297	+2 856 862.284	L103	+69 355.856	+2 857 284.061
L58	+69 815.246	+2 856 310.892	L81	+69 649.571	+2 856 864.692	L104	+69 316.707	+2 857 325.911
L59	+69 813.525	+2 856 313.087	L82	+69 621.181	+2 856 893.381	L105	+69 314.609	+2 857 328.054
L60	+69 807.307	+2 856 334.051	L83	+69 618.654	+2 856 894.160	L106	+69 248.425	+2 857 392.668
L61	+69 807.638	+2 856 336.784	L84	+69 594.068	+2 856 889.364	L107	+69 245.978	+2 857 394.318
L62	+69 816.744	+2 856 352.353	L85	+69 591.124	+2 856 888.790	L108	+69 199.387	+2 857 414.745
L63	+69 817.484	+2 856 355.148	L86	+69 575.639	+2 856 885.774	L109	+69 196.860	+2 857 416.307
L64	+69 816.828	+2 856 413.988	L87	+69 573.438	+2 856 886.798	L110	+69 154.223	+2 857 451.790
L65	+69 816.431	+2 856 416.940	L88	+69 555.455	+2 856 919.137	L111	+69 153.090	+2 857 454.250
L66	+69 807.692	+2 856 450.317	L89	+69 555.722	+2 856 921.569	L112	+69 153.220	+2 857 463.710
L67	+69 806.977	+2 856 453.230	L90	+69 566.632	+2 856 933.875	L113	+69 152.214	+2 857 466.304
L68	+69 797.787	+2 856 493.406	L91	+69 568.622	+2 856 936.119	L114	+69 112.916	+2 857 508.236
L69	+69 797.118	+2 856 496.330	L92	+69 584.732	+2 856 954.294	L115	+69 110.698	+2 857 510.241
L70	+69 793.656	+2 856 511.506	L93	+69 585.323	+2 856 956.861	R69	+69 916.020	+2 856 260.790
L71	+69 792.831	+2 856 514.385	L94	+69 573.631	+2 856 998.641	R70	+69 915.406	+2 856 307.758
L72	+69 759.214	+2 856 611.440	L95	+69 572.386	+2 857 001.328	R71	+69 930.045	+2 856 324.494
L73	+69 758.202	+2 856 614.264	L96	+69 516.429	+2 857 083.964	R72	+69 922.010	+2 856 356.982
L74	+69 717.946	+2 856 722.950	L97	+69 514.709	+2 857 086.421	R73	+69 920.518	+2 856 359.422
L75	+69 716.785	+2 856 725.714	L98	+69 464.818	+2 857 155.351	R74	+69 902.653	+2 856 374.944
L76	+69 671.565	+2 856 821.690	L99	+69 462.991	+2 857 157.729	R75	+69 900.800	+2 856 377.244

KOÖRDINATE LYS/CO-ORDINATE LIST WG 29° KONST./CONST. Y = ± 0.000 X = +2 800 000.000

R76	+69 872.532	+2 856 428.851	R90	+69 701.531	+2 856 876.187	R103	+69 359.999	+2 857 359.511
R77	+69 871.431	+2 856 431.618	R91	+69 700.157	+2 856 878.853	R104	+69 357.890	+2 857 361.640
R78	+69 862.692	+2 856 465.006	R92	+69 685.948	+2 856 905.837	R105	+69 325.390	+2 857 391.790
R79	+69 861.817	+2 856 467.873	R93	+69 677.352	+2 856 952.746	R106	+69 323.190	+2 857 393.830
R80	+69 842.387	+2 856 523.491	R94	+69 664.908	+2 856 974.558	R107	+69 304.180	+2 857 411.470
R81	+69 841.427	+2 856 526.333	R95	+69 628.905	+2 857 005.823	R108	+69 302.174	+2 857 413.685
R82	+69 806.188	+2 856 634.331	R96	+69 606.764	+2 857 041.360	R109	+69 267.726	+2 857 459.115
R83	+69 805.176	+2 856 637.154	R97	+69 524.962	+2 857 157.823	R110	+69 266.887	+2 857 461.808
R84	+69 802.070	+2 856 645.080	R98	+69 523.238	+2 857 160.278	R111	+69 267.343	+2 857 471.982
R85	+69 800.977	+2 856 647.874	R99	+69 503.172	+2 857 188.852	R112	+69 266.285	+2 857 474.472
R86	+69 763.790	+2 856 742.929	R100	+69 501.396	+2 857 191.270	R113	+69 221.683	+2 857 513.822
R87	+69 762.618	+2 856 745.689	R101	+69 439.134	+2 857 272.360	R114	+69 205.351	+2 857 513.799
R88	+69 715.211	+2 856 848.933	R102	+69 437.210	+2 857 274.659	R115	+69 147.931	+2 857 545.019
R89	+69 713.910	+2 856 851.635						