

***THE PROVINCE OF  
GAUTENG***

***DIE PROVINSIE  
GAUTENG***

**Provincial Gazette Extraordinary  
Buitengewone Provinsiale Koerant**

**Vol. 14**

**PRETORIA, 17 OCTOBER  
OKTOBER 2008**

**No. 285**

---

**CONTENTS • INHOUD**

<i>No.</i>		<i>Page No.</i>	<i>Gazette No.</i>
<b>GENERAL NOTICES</b>			
3875	Gauteng Transport Infrastructure Act (8/2001): Proclamation of the deviation and closing of portions of the provincial railway line in connection with the Gautrain Rapid Rail Link: District of Randburg.....	3	285
3876	do.: Proposed amendment of the preliminary design of a portion of Provincial Road K109 between future Provincial Road K54 and a point just south of National Road N1-21: District of Pretoria .....	6	285
3877	do.: Proposed expropriation of a tunnel servitude in respect of Gautrain Rapid Rail Link Project between Park Station (Johannesburg) and Sandton Station .....	7	285

---

## GENERAL NOTICES

### NOTICE 3875 OF 2008

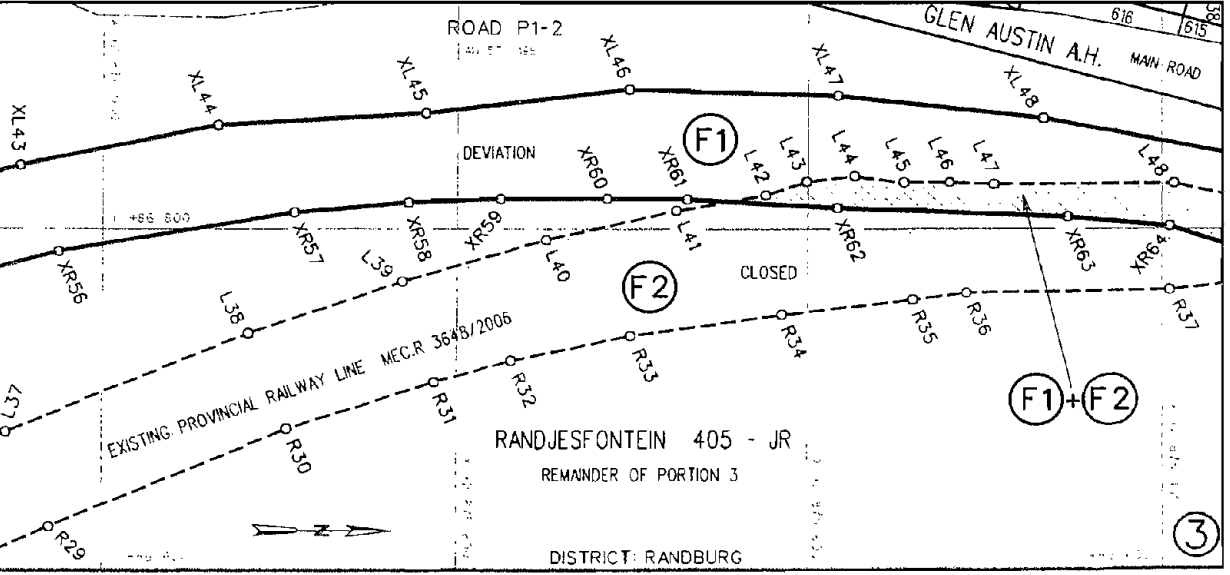
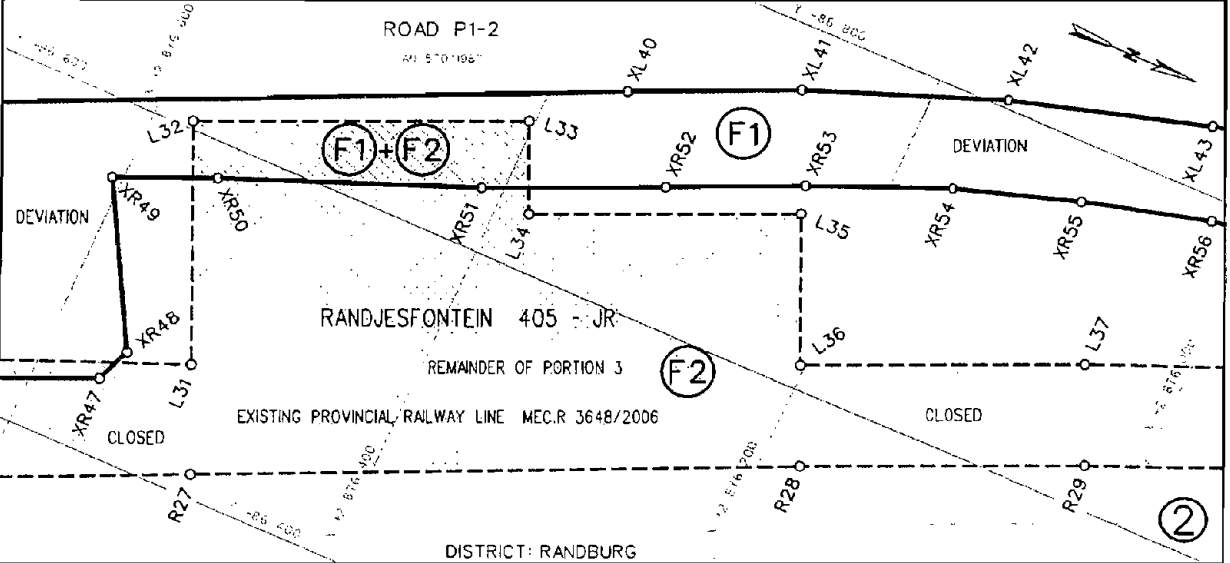
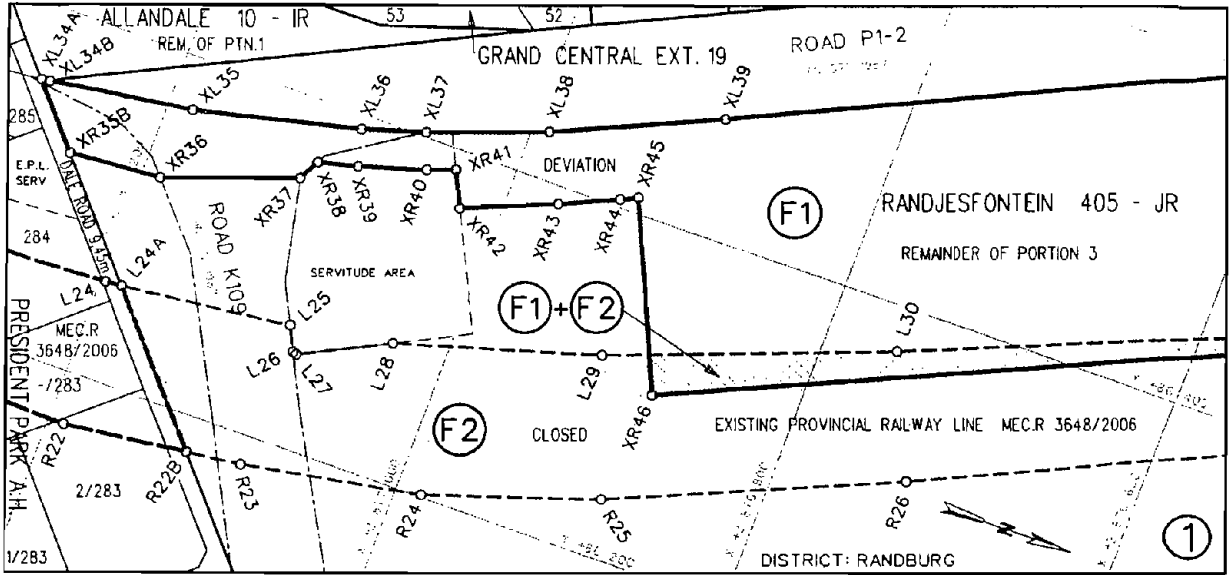
PROCLAMATION OF THE DEVIATION AND CLOSING OF PORTIONS OF THE PROVINCIAL RAILWAY LINE IN CONNECTION WITH THE GAUTRAIN RAPID RAIL LINK: DISTRICT RANDBURG

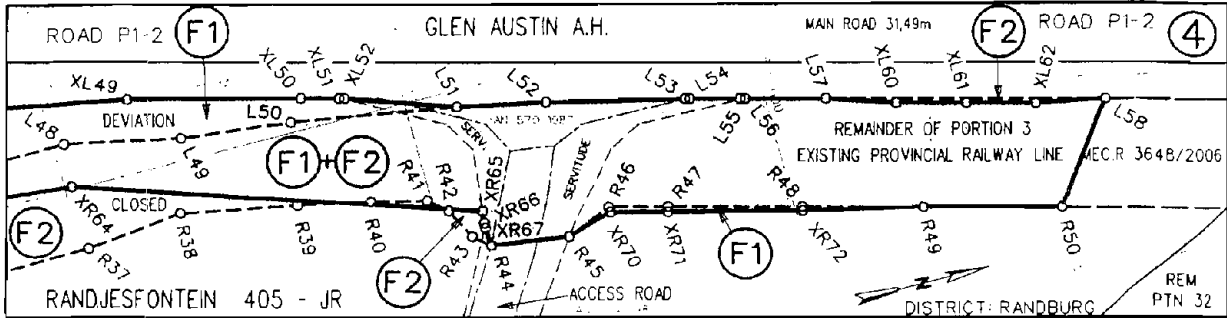
In terms of section 11(1)(d) of the Gauteng Transport Infrastructure Act, 2001 (Act No 8 of 2001) the MEC hereby proclaims the deviation of portions of provincial railway line and the resultant closure of portions thereof over the Remainder of Portion 1 of the farm Allandale 10 – IR and the Remainder of Portion 3 of the farm Randjesfontein 405 – JR, District Randburg as indicated on the accompanying sketch plans.

In terms of section 23(6) of the abovementioned act it is hereby declared that boundary beacons demarcating the deviation of the railway line, have been erected on the land and that plans GRP 03/38/24 Exp – 24A Exp which indicate the land encroached upon by the said deviation of the railway line, are available for inspection by any interested person at the office of the Department of Public Transport, Roads and Works (Gauteng), Simmonds Street 41, Sage Life Building, Johannesburg.

MEC Resolution .....019..... 2008

Reference 2/1/7/8-R.....





REFERENCE / VERWYSINGS

SPOORLYN VERLEGGING RAILWAY LINE DEVIATED  SPOORLYN GESLUIT RAILWAY LINE CLOSED  BESTAANDE SPOORLYN EXISTING RAILWAY LINE

DIE FIGURE (1) XL34A, XL34B, XL35 - XL52, L51 - L57, XL60 - XL62, L58, R50, R49, XR72 - XR70, R45, R44, THE FIGURES XR67 - XR36, XR35B, XL34A.  
(2) L24A, L25 - L58, R50 - R23, R22B, L24A

VERTEENWOORDIG DIE PROKLAMASIE VAN DIE VERLEGGING VAN DIE BETROKKE GEDEELTES VAN DIE SPOORLYN EN GEVOLGLIKE SLUITING VAN GEDEELTES DAARVAN OOR DIE RESTANT VAN GEDEELTE 1 VAN DIE PLAAS ALLANDALE 10-IR, DIE RESTANT VAN GEDEELTE 3 VAN DIE PLAAS RANDJESFONTEIN 405-JR SOOS BEDOEL BY DIE AFKONDIGING DAARVAN IN DIE PROVINSIALE KOERANT EN IN DETAIL GETOON OP PLANNE GRP 03/38/24Exp-24AExp

REPRESENT THE PROCLAMATION OF THE DEVIATION OF THE PORTIONS CONCERNED OF THE RAILWAY LINE AND RESULTANT CLOSURE OF PORTIONS THEREOF OVER THE REMAINDER OF PORTION 1 OF THE FARM ALLANDALE 10-IR, THE REMAINDER OF PORTION 3 OF THE FARM RANDJESFONTEIN 405-JR AS INTENDED BY THE PUBLICATION THEREOF IN THE PROVINCIAL GAZETTE AND SHOWN IN DETAIL ON PLANS GRP 03/38/24Exp-24AExp

BUNDEL NR. / FILE NO. 2/1/7/8-GAUTRAIN

KOÖRDINATE LYS/CO-ORDINATE LIST WG 29° KONST./CONST Y= +/- 0.00 X= +2 800 000.00

L24A	+86257.821	+77187.471	R28	+86558.968	+76177.832	XL51	+86812.558	+75235.270
L25	+86269.149	+77089.611	R29	+86624.718	+76030.282	XL52	+86811.662	+75232.408
L26	+86254.852	+77082.480	R30	+86681.649	+75896.005	XL60	+86726.986	+74928.427
L27	+86254.190	+77080.473	R31	+86709.053	+75812.715	XL61	+86716.425	+74889.846
L28	+86279.255	+77031.233	R32	+86721.841	+75768.382	XL62	+86705.965	+74851.246
L29	+86314.096	+76915.593	R33	+86736.449	+75700.091			
L30	+86373.667	+76758.645	R34	+86748.883	+75614.098	XR35B	+86321.429	+77242.917
L31	+86473.216	+76519.082	R35	+86757.760	+75540.608	XR36	+86325.808	+77189.296
L32	+86604.584	+76577.816	R36	+86761.894	+75510.583	XR37	+86352.843	+77114.640
L33	+86682.967	+76403.233	R37	+86763.696	+75395.837	XR38	+86365.151	+77108.471
L34	+86632.757	+76380.784	R38	+86770.207	+75339.378	XR39	+86370.477	+77086.455
L35	+86696.087	+76239.137	R39	+86757.555	+75273.841	XR40	+86382.175	+77048.912
L36	+86613.925	+76202.403	R40	+86748.777	+75233.316	XR41	+86388.031	+77033.074
L37	+86679.949	+76054.976	R41	+86741.184	+75202.065	XR42	+86367.848	+77023.286
L38	+86738.002	+75917.462	R42	+86731.984	+75191.657	XR43	+86389.818	+76970.450
L39	+86768.571	+75830.781	R43	+86714.116	+75182.812	XR44	+86404.525	+76937.938
L40	+86793.570	+75748.508	R44	+86705.928	+75173.618	XR45	+86409.138	+76928.591
L41	+86810.700	+75674.159	R45	+86699.746	+75129.120	XR46	+86302.177	+76880.620
L42	+86819.836	+75623.707	R46	+86710.455	+75102.691	XR47	+86444.711	+76562.810
L43	+86827.800	+75600.553	R47	+86701.783	+75069.723	XR48	+86464.957	+76555.063
L44	+86831.382	+75573.654	R48	+86681.604	+74995.465	XR49	+86555.734	+76605.821
L45	+86827.457	+75545.922	R49	+86663.572	+74929.309	XR50	+86579.845	+76551.104
L46	+86827.672	+75520.112	R50	+86642.743	+74852.455	XR51	+86635.704	+76412.226
L47	+86826.560	+75495.023				XR52	+86679.298	+76315.732
L48	+86827.149	+75393.408	XL34A	+86356.251	+77273.260	XR53	+86712.342	+76243.532
L49	+86812.981	+75327.849	XL34B	+86356.997	+77268.414	XR54	+86744.527	+76166.873
L50	+86806.132	+75265.186	XL35	+86369.053	+77185.532	XR55	+86767.169	+76096.563
L51	+86790.245	+75171.637	XL36	+86391.652	+77092.122	XR56	+86786.579	+76024.865
L52	+86779.582	+75121.873	XL37	+86402.692	+77056.691	XR57	+86809.715	+75891.862
L53	+86760.714	+75044.122	XL38	+86427.391	+76989.981	XR58	+86815.508	+75827.330
L54	+86759.968	+75041.217	XL39	+86469.001	+76897.360	XR59	+86817.758	+75774.686
L55	+86752.502	+75013.682	XL40	+86721.958	+76358.715	XR60	+86817.855	+75713.536
L56	+86751.720	+75010.786	XL41	+86763.037	+76268.684	XR61	+86817.552	+75667.996
L57	+86739.766	+74966.407	XL42	+86804.877	+76159.473	XR62	+86812.338	+75583.274
L58	+86697.915	+74811.976	XL43	+86837.896	+76047.292	XR63	+86807.171	+75452.911
			XL44	+86861.495	+75935.171	XR64	+86801.581	+75395.798
R22B	+86179.213	+77118.928	XL45	+86868.374	+75817.930	XR65	+86727.032	+75173.254
R23	+86183.141	+77087.538	XL46	+86882.233	+75701.300	XR66	+86719.962	+75174.042
R24	+86201.448	+76985.192	XL47	+86878.472	+75583.129	XR67	+86716.973	+75174.134
R25	+86234.603	+76886.643	XL48	+86865.421	+75466.918	XR70	+86707.300	+75102.489
R26	+86303.916	+76727.471	XL49	+86843.160	+75352.108	XR71	+86698.904	+75070.571
R27	+86413.329	+76492.307	XL50	+86818.329	+75256.308	XR72	+86679.271	+74995.931

**NOTICE 3876 OF 2008****NOTICE OF PROPOSED AMENDMENT OF THE PRELIMINARY DESIGN OF A PORTION OF PROVINCIAL ROAD K109 BETWEEN FUTURE PROVINCIAL ROAD K54 AND A POINT JUST SOUTH OF NATIONAL ROAD N1-21: DISTRICT OF PRETORIA.**

It is hereby notified for general information that an application was received to amend the published preliminary design of provincial road K109 between future provincial road K54 and a point just south of National Road N1-21, in the Centurion area of the Tshwane Municipality, in terms of section 8(9) of the Gauteng Transport Infrastructure Act, 2001 (Act 8 of 2001) (the Act).

The proposed amendment of the preliminary design in question is contained in Report No. 1129A and indicated on plans GRP 07/05/1PLy and GRP 07/05/2PLy, all of which are available for inspection by any interested person at the Plan Room of the Department of Public Transport, Roads and Works, First Floor, South Tower, Sage Building, 41 Simmonds Street, Johannesburg.

In terms of section 38(2)(a) of the Act, interested and affected parties are hereby notified of the opportunity to submit comments and objections with regard to the proposed amended draft preliminary design within 30 days of the date of publication of this notice to the following address: Head: Department of Public Transport, Roads and Works, Private Bag X83, Marshalltown, 2107; for attention Director Design.

**Reference: 2/1/1/2/3/1 – K109**

**NOTICE 3877 OF 2008**

**PROPOSED EXPROPRIATION OF A TUNNEL SERVITUDE IN RESPECT OF THE GAUTRAIN RAPID RAIL LINK PROJECT BETWEEN PARK STATION (JOHANNESBURG) AND SANTON STATION**

Due to amendments to the horizontal and vertical alignment of the tunnel servitudes over the properties listed hereunder and the fact that the addresses of the owners concerned could not be traced, it is hereby notified for general information in terms of regulation 13 of the Gauteng Transport Infrastructure Regulations, 2002, that the MEC for Public Transport, Roads and Works intends to expropriate the rights for tunnel servitudes for the purpose of accommodating railway lines as defined in section 1 of the Gauteng Transport Infrastructure Act, 2001 (Act No 8 of 2001) over the following properties:

<b>PROPERTY DESCRIPTION</b>	<b>TITLE DEED NO</b>	<b>SIZE OF PROPER TY</b>	<b>AREA AFFECTED</b>	<b>APPROXIMATE DEPTH OF TUNNEL VARIES BETWEEN</b>
Erf 3481 Johannesburg	T6315/1962	248m <sup>2</sup>	112m <sup>2</sup>	44m-64m
Erf 3482 Johannesburg	T6315/1962	248m <sup>2</sup>	214m <sup>2</sup>	44m-64m
Erf 3483 Johannesburg	T6316/1962	496m <sup>2</sup>	16m <sup>2</sup>	44m-64m
Erf 3490 Johannesburg	T13663/1987	495m <sup>2</sup>	55m <sup>2</sup>	44m-64m
Erf 3649 Johannesburg	T151552/1964	248m <sup>2</sup>	125m <sup>2</sup>	47m-67m
Erf 3650 Johannesburg	T55956/1996	249m <sup>2</sup>	134m <sup>2</sup>	47m-67m
Erf 3651 Johannesburg	T55956/1996	249m <sup>2</sup>	50m <sup>2</sup>	47m-67m
Erf 3748 Johannesburg	T53373/1994	248m <sup>2</sup>	48m <sup>2</sup>	50m-70m
Erf 3750 Johannesburg	T31708/1981	495 m <sup>2</sup>	118 m <sup>2</sup>	50m-70m
Erf 3898 Johannesburg	T34868/1980	495 m <sup>2</sup>	12 m <sup>2</sup>	49m-69m
Erf 3901 Johannesburg	T4788/1964	248m <sup>2</sup>	56 m <sup>2</sup>	49m-69m
Erf 3902 Johannesburg	T4788/1964	248m <sup>2</sup>	23 m <sup>2</sup>	49m-69m
Erf 4017 Johannesburg	T5665/1933	600m <sup>2</sup>	169 m <sup>2</sup>	49m-69m
Erf 4018 Johannesburg	T5665/1933	433m <sup>2</sup>	166 m <sup>2</sup>	49m-69m
Erf 4026 Johannesburg	SS146/1986	815	449 m <sup>2</sup>	53m-73m
Erf 4027 Johannesburg	T35413/2008	495 m <sup>2</sup>	17 m <sup>2</sup>	53m-73m
Erf 4098 Johannesburg	T25034/2002	447 m <sup>2</sup>	390 m <sup>2</sup>	55m-75m
Erf 4139 Johannesburg	T34814/2002	824 m <sup>2</sup>	66 m <sup>2</sup>	75m-95m
Erf 4457 Johannesburg	SS86/1981	991 m <sup>2</sup>	17 m <sup>2</sup>	62m-82m
Erf 4643 Johannesburg	T56841/2005	1529 m <sup>2</sup>	368 m <sup>2</sup>	62m-82m
Erf 4745 Johannesburg	Unknown	3126m <sup>2</sup>	226 m <sup>2</sup>	6m-26m
Erf 4953 Johannesburg	T7511/1992	496 m <sup>2</sup>	67 m <sup>2</sup>	44m-64m
Erf 4973 Johannesburg	T19721/2002	1983 m <sup>2</sup>	3 m <sup>2</sup>	48m-68m
Erf 4987 Johannesburg	T20341/2003	14787 m <sup>2</sup>	8 m <sup>2</sup>	49m-69m
Erf 5011 Johannesburg	T55161/1983	1193 m <sup>2</sup>	505 m <sup>2</sup>	55m-75m

Erf 5134 Johannesburg	T25712/1984	1767 m <sup>2</sup>	290 m <sup>2</sup>	49m-69m
Erf 5168 Johannesburg	T10317/1994	1981m <sup>2</sup>	98 m <sup>2</sup>	50m-70m
Erf 5183 Johannesburg	Unknown	495m <sup>2</sup>	116m <sup>2</sup>	49m-69m
Erf 5194 Johannesburg	Unknown	991m <sup>2</sup>	182m <sup>2</sup>	51m-71m
Erf 5261 Johannesburg	T1282/1994	169 m <sup>2</sup>	39 m <sup>2</sup>	49m-69m
Portion 1 of Erf 4479 Johannesburg	T45817/2007	47651 m <sup>2</sup>	242 m <sup>2</sup>	6m-26m
Portion 1 of Erf 860 Johannesburg	Unknown	342m <sup>2</sup>	148 m <sup>2</sup>	71m-91m
Portion 2 of Erf 860 Johannesburg	Unknown	342m <sup>2</sup>	38 m <sup>2</sup>	55m-75m
Remaining extent of Erf 860 Johannesburg	T58318/1995	250 m <sup>2</sup>	17 m <sup>2</sup>	55m-75m
Remaining extent of Erf 4352 Johannesburg	G39/1931	6.2109ha	3072 m <sup>2</sup>	33m-53m
Remaining extent of Erf 4479 Johannesburg	T36811/2000	2349 m <sup>2</sup>	274 m <sup>2</sup>	25m-45m
Portion 815 of the farm Braamfontein 53-IR	Unknown	4.5345ha	1385 m <sup>2</sup>	80m-100m
Portion 859 of the farm Braamfontein 53-IR	Unknown	412m <sup>2</sup>	289 m <sup>2</sup>	85m-105m
Erf 640 Parktown	T28231/2008	1.3104ha	3009 m <sup>2</sup>	23m-43m
Erf 641 Parktown	T2233/1966	3388m <sup>2</sup>	708 m <sup>2</sup>	8m-28m
Erf 646 Parktown	T	3793m <sup>2</sup>	862m <sup>2</sup>	7m-27m
Erf 647 Parktown	T9891/2006	3793 m <sup>2</sup>	709 m <sup>2</sup>	7m-27m
Erf 649 Parktown	T73556/2007	3938 m <sup>2</sup>	935 m <sup>2</sup>	7m-27m
Erf 917 Parktown	T41338/2007	1.2394ha	3205 m <sup>2</sup>	8m-28m
Portion 3 of Erf 28 Parktown	T3656/1939	468m <sup>2</sup>	221 m <sup>2</sup>	66m-86m
Portion 14 of Erf 613 Parktown	T36481/2001	1471 m <sup>2</sup>	322 m <sup>2</sup>	52m-72m
Remaining extent of Erf 613 Parktown	T7988/2004	5636m <sup>2</sup>	1121m <sup>2</sup>	66m-86m
Remaining extent of Erf 642 Parktown	T14313/1966	2807m <sup>2</sup>	627m <sup>2</sup>	7m-27m
Erf 419 Saxonwold	T15785/2004	4196m <sup>2</sup>	419m <sup>2</sup>	7m-27m
Remaining Extent of Erf 506 Saxonwold	T14949/1974	2299m <sup>2</sup>	89m <sup>2</sup>	7m-27m
Portion 1 of Erf 504 Saxonwold	T11434/2000	2730m <sup>2</sup>	140m <sup>2</sup>	7m-27m
Portion 2 of Erf 4 Riviera	T46403/2007	2896m <sup>2</sup>	24m <sup>2</sup>	9m-29m
Erf 33 Melrose Estate	T80177/2004	3035m <sup>2</sup>	581m <sup>2</sup>	3m-23m
Remaining extent of Erf 29 Melrose Estate	T43711/2000	2861m <sup>2</sup>	306m <sup>2</sup>	3m-23m
Erf 6 Melrose	T5181/1933	2974m <sup>2</sup>	786m <sup>2</sup>	4m-24m
Portion 2 of Erf 230 Melrose	T39575/1991	1258m <sup>2</sup>	246m <sup>2</sup>	11m-31m
Portion 16 of the farm Zandfontein 42-IR	Unknown	3938m <sup>2</sup>	3m <sup>2</sup>	75m-95m



Portion 754 of the farm Zandfontein 42-IR	T11860/1967	2.0229ha	170m <sup>2</sup>	76m-96m
Remaining extent of the farm Zandfontein 42-IR	Unknown	1.5451ha	2m <sup>2</sup>	75m-95m
Portion 354 of the farm Syferfontein 51-IR	T11584/1972	1.9898ha	438m <sup>2</sup>	74m-94m
Remaining extent of 128 of the farm Syferfontein 51-IR	T32866/1963	7.5623ha	1872m <sup>2</sup>	74m-94m
Erf 152 Dunkeld	T9383/2003	2974m <sup>2</sup>	40m <sup>2</sup>	25m-45m
Portion 1 of Erf 212 Dunkeld	T52450/1995	2677m <sup>2</sup>	37m <sup>2</sup>	29m-49m
Remainder of Erf 1 Illovo	T47086/1986	3827m <sup>2</sup>		75m-95m
Portion 1 of Erf 113 Inanda Ext 1	T20116/1990	535m <sup>2</sup>	14m <sup>2</sup>	68m-88m
Portion 2 of Erf 113 Inanda Ext 1	T37637/2006	492m <sup>2</sup>	122m <sup>2</sup>	68m-88m
Portion 50 of Erf 113 Inanda Ext 1	T149932/2004	634m <sup>2</sup>	51m <sup>2</sup>	68m-88m
Portion 68 of Erf 113 Inanda Ext 1 (cons 79)	T61767/1997	884m <sup>2</sup>	31m <sup>2</sup>	68m-88m
Portion 69 of Erf 113 Inanda Ext 1(cons 79)	T61767/1997	884m <sup>2</sup>	3m <sup>2</sup>	68m-88m
Portion 72 of Erf 113 Inanda Ext 1	T73927/2006	432m <sup>2</sup>	85m <sup>2</sup>	68m-88m
Portion 5 of Erf 37 Sandhurst	T22454/1972	2182m <sup>2</sup>	4m <sup>2</sup>	52m-72m
Portion 5 of Erf 39 Sandhurst	T787/2006	4069m <sup>2</sup>	656m <sup>2</sup>	59m-79m
Portion 10 of Erf 39 Sandhurst	T36094/1988	4000m <sup>2</sup>	358m <sup>2</sup>	59m-79m
Portion 5 of Erf 40 Sandhurst	T21251/1972	676m <sup>2</sup>	52m <sup>2</sup>	67m-87m
Portion 7 of Erf 40 Sandhurst	T70108/1998	4117m <sup>2</sup>	1183m <sup>2</sup>	65m-85m
Remaining extent of Portion 37	T114488/2002	8098m <sup>2</sup>	293m <sup>2</sup>	55m-75m
Remaining extent of Portion 2 of Erf 37 Sandhurst (cons to 254)	T129953/2004	6357m <sup>2</sup>	1427m <sup>2</sup>	55m-75m
Remaining extent of Portion 3 of Erf 37 Sandhurst	T158008/2005	7255m <sup>2</sup>	1828m <sup>2</sup>	52m-72m
Remaining extent of Portion 3 of Erf 39 Sandhurst	T158008/2005	7255m <sup>2</sup>	1267m <sup>2</sup>	62m-82m
Remaining extent of Portion 2 of Erf 40 Sandhurst	T19499/1966	1.7717ha	94m <sup>2</sup>	67m-87m
Remaining extent of	T25307/2006	4002m <sup>2</sup>	622m <sup>2</sup>	

Portion 4 of Erf 40 Sandhurst				63m-83m
Remaining extent of Erf 104 Sandhurst Ext 3	Unknown	3.2679ha	3238 m <sup>2</sup>	40m-60m
Portion 2 of Erf 105 Sandhurst Ext 3	T13819/1990	1703m <sup>2</sup>	697 m <sup>2</sup>	43m-63m
Remaining extent of Erf 105 Sandhurst Ext 3	Unknown	1.1669ha	2162 m <sup>2</sup>	43m-63m
Remaining extent of Erf 575 Sandhurst Ext 49	Unknown	3.9098ha	87 m <sup>2</sup>	35m-55m

The **MEC** shall have the right to tunnel below the surface of the servitude area and to carry out such investigations and tests, including the sinking of boreholes for the purpose of geological investigations, as may be necessary for or in connection with the said tunneling and for that purpose to enter upon the servitude area with the necessary workers, machines, equipment, instruments and vehicles to carry out such investigations and tests, on the completion of which the **MEC** shall be obliged to repair any damage caused to the surface of the servitude area by and during such investigations and tests.

The surface of the servitude area may be used by the owner subject to the rights herein expropriated by the **MEC**, but none of the following activities may be conducted on or below the surface of the servitude area without the written permission of the **MEC** or his delegatee first having been had and obtained and subject to such conditions as the **MEC** or his delegatee may lay down:

- The sinking of boreholes.
- The construction of basements below the surface of the servitude area.
- Piling of foundations of any buildings or structures to be erected on the surface.
- The construction, laying or installation of any pipelines, electrical lines, cables or any structure of whatsoever nature at depths **exceeding three meters below the surface of the servitude area.**
- The use of explosives for any excavation of whatsoever nature below the surface of the servitude area.
- Any excavation of any nature **deeper than three meters below the surface of the servitude area.**

In terms of the aforementioned regulation 13 the owners, occupiers and the other interested parties are requested to lodge written comments on or objections with regard to the aforementioned intention as contemplated by the **MEC**, in writing to the Head: Department of Public Transport, Roads and Works, Private Bag X83, Marshalltown 2107, Attention: Director: Design or by fax 011 3557235, within 21 (twenty one) days from the date of this notice.

**Reference: 2/1/7/8- Gautrain**

**Dated:**