

***THE PROVINCE OF
GAUTENG***

***DIE PROVINSIE
GAUTENG***

**Provincial Gazette Extraordinary
Buitengewone Provinsiale Koerant**

Vol. 15

**PRETORIA, 2 JUNE 2009
JUNIE**

No. 131

CONTENTS • INHOUD

<i>No.</i>		<i>Page No.</i>	<i>Gazette No.</i>
GENERAL NOTICES			
1842	Gauteng Transport Infrastructure Act (8/2001): Proclamation of a provincial railway line in connection with the Gautrain Rapid Rail Link between Pretoria, Johannesburg and the O.R. Tambo International Airport: District of Pretoria	3	131
1843	do.: do.: do.....	6	131
1844	do.: do.:	9	131
1845	do.: do.....	15	131
1846	do.: Taking over a portion of Provincial Road 465 from Provincial Road D99 to Provincial Road P123-1 by the Plumari Ranch Hekpoort (Pty) Ltd: Gauteng Province	19	131
1847	do.: Proposed access control on provincial roads within the Dinokeng Nature Reserve: Gauteng Province.....	21	131
1848	do.: Proclamation of portions concerned of Provincial Road K33, District of Krugersdorp	23	131
1849	do.: Proclamation of an access road in connection with K33, District of Krugersdorp.....	26	131
1850	do.: Proclamation of an access road in connection with the Gautrain Rapid Rail Link between Pretoria, Johannesburg and the O.R. Tambo International Airport	28	131

GENERAL NOTICES

NOTICE 1842 OF 2009

PROCLAMATION OF A PROVINCIAL RAILWAY LINE IN CONNECTION WITH THE GAUTRAIN RAPID RAIL LINK BETWEEN PRETORIA, JOHANNESBURG AND THE O R TAMBO INTERNATIONAL AIRPORT : DISTRICT PRETORIA

In terms of section 11(1)(b) of the Gauteng Transport Infrastructure Act, 2001 (Act No. 8 of 2001) the MEC hereby proclaims that a provincial railway line, with varying widths, represents the proclamation of the portion concerned of the railway line over Erven 8-14 in Highveld Erf -/1, Erf 22, Portions 1-3 of Erf 1, Portions 2, 4, 13, 12 of Erf 2 and Erf 2321 in Highveld, Portions 14 and 21 of the farm Brakfontein 390-JR, Holdings 188, 189, 191 and 193 in Lyttelton Agricultural Holdings Extension 1, district Pretoria, as indicated on the accompanying sketch plans.

In terms of section 23(6) of the aforementioned act it is hereby declared that plans GRP03/38/31Exp and 33Exp which indicate the land encroached upon by the railway line in detail, are available for inspection at the office of the Department of Public Transport, Roads and Works, First Floor, South Tower, 41 Simmonds Street, Sage Life Building, Johannesburg during office hours.

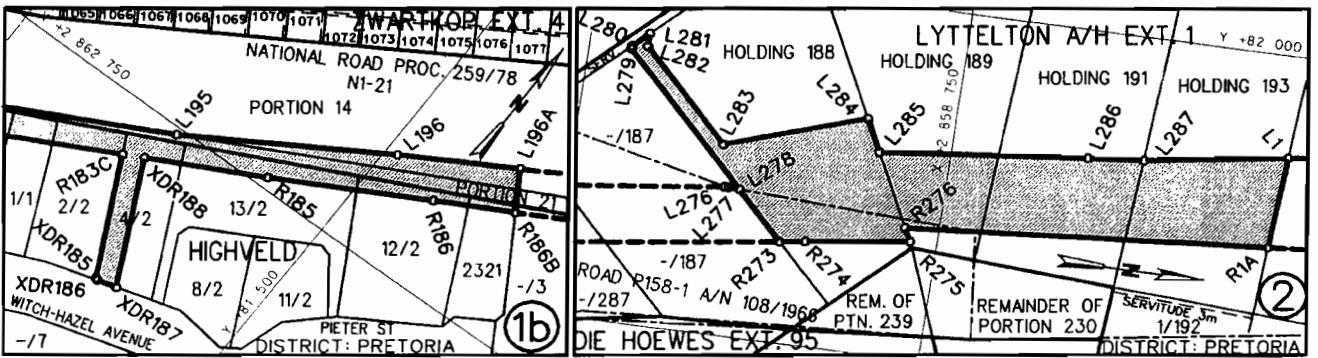
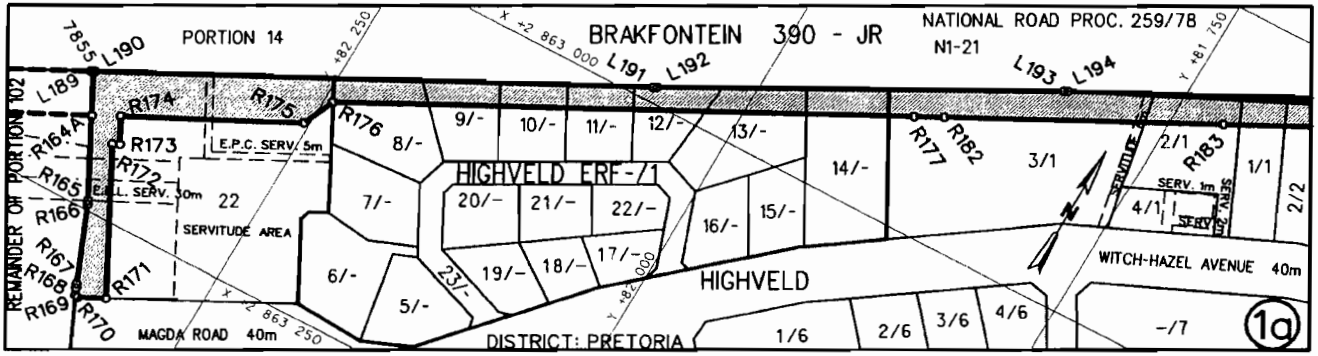
Reference : 2/1/7/8 Gautrain

KENNISGEWING 1842 VAN 2009**PROKLAMASIE VAN 'N PROVINCIALE SPOORLYN IN VERBAND MET DIE GAUTREIN SNELSPoorVERBINDING-PROJEK TUSSEN PRETORIA, JOHANNESBURG EN DIE O R TAMBO INTERNASIONALE LUGHAWA : DISTRIK PRETORIA**

Ingevolge artikel 11(1)(b) van die Gauteng Transport Infrastructure Act, 2001 (Act No. 8 of 2001) proklameer die LUR hiermee dat 'n provinsiale spoorlyn, met wisselende breedtes bestaan, op Erwe 8-14 in Highveld Erf -/1, Erf 22, Gedeeltes 1-3 van Erf 1, Gedeeltes 2,4,12, 13 van Erf 2 en Erf 2321 in Highveld, Gedeeltes 14 en 21 van die plaas Brakfontein 390-JR, Hoewes 188, 189, 191 en 193 in Lyttelton Landbouhoewes Uitbreiding 1, distrik Pretoria, soos op bygaande sketsplanne aangetoon.

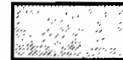
Ingevolge artikel 23(6) van voormelde wet word hiermee verklaar dat planne GRP03/38/31Exp en 33Exp wat die grond wat deur die toegangspad in beslag geneem is in besonderhede aantoon, by die Plankantoor van die Departement van Openbare Vervoer, Paaie en Werke, Eerste Vloer, Suidtoring, Sage Life Gebou, Simmondsstraat 41, Johannesburg, deur enige belanghebbende persoon ter insae beskikbaar is.

Verwysing : 2/1/7/8 Gautrain



REFERENCE / VERWYSINGS

GEPROKLAEMEERDE SPOORLYN
PROCLAIMED RAILWAY LINE



DIE FIGURE (1a-b) 7855, L190 - L196, L196A, R186B, R186, R185, XDR188 - XDR185, R183C, R183, R182,
THE FIGURES : R177 - R165, R164A, 7855.
(2) L277 - L287, L1, R1A, R276 - R273, L277

VERTEENWOORDIG DIE PROKLAMASIE VAN DIE BETROKKE GEDEELTE VAN DIE SPOORLYN OOR ERWE 8-14 IN HIGHVELD ERF -/1, ERF 22, GEDEELTES 1-3 VAN ERF 1, GEDEELTES 2, 4, 12, 13 VAN ERF 2 EN ERF 2321 IN HIGHVELD, GEDEELTES 14 EN 21 VAN DIE PLAAS BRAKFONTein 390-JR, HOEWES 188, 189, 191 EN 193 IN LYTTTELTON LANDBOUHOEWES UITBREIDING 1 SOOS BEDOEL BY DIE AFKONDIGING DAARVAN IN DIE PROVINSIALE KOERANT EN IN DETAIL GETOON OP PLANNE GRP 03/38/31Exp EN 33Exp.

REPRESENT THE PROCLAMATION OF THE PORTION CONCERNED OF THE RAILWAY LINE OVER ERVEN 8-14 IN HIGHVELD ERF -/1, ERF 22, PORTIONS 1-3 OF ERF 1, PORTIONS 2, 4, 13, 12 OF ERF 2 AND ERF 2321 IN HIGHVELD, PORTIONS 14 AND 21 OF THE FARM BRAKFONTein 390-JR, HOLDINGS 188, 189, 191 AND 193 IN LYTTTELTON AGRICULTURAL HOLDINGS EXTENSION 1 AS INTENDED BY THE PUBLICATION THEREOF IN THE PROVINCIAL GAZETTE AND SHOWN IN DETAIL ON PLANS GRP 03/38/31Exp AND 33Exp.

BUNDEL NR. / FILE NO. 2/17/8-GAUTRAIN

KOÖRDINATE LYS/CO-ORDINATE LIST WG 29° KONST./CONST. Y= +/- 0.00 X= +2 800 000.00

7855	+82395.249	+63161.451	L285	+81894.228	+58796.618	R182	+81881.877	+62914.573
L190	+82393.916	+63160.770	L286	+81909.184	+58659.065	R183	+81717.787	+62829.256
L191	+82062.222	+62989.771	L287	+81912.832	+58622.954	R183C	+81638.526	+62788.038
L192	+82059.570	+62988.370	L1	+81927.760	+58527.189	R185	+81550.933	+62742.535
L193	+81821.409	+62859.540	R164A	+82380.781	+63189.600	R186	+81453.247	+62689.217
L194	+81818.756	+62858.139	R165	+82353.095	+63243.446	R186B	+81404.544	+62662.683
L195	+81618.250	+62754.816	R166	+82351.849	+63246.172	R273	+81822.337	+58853.351
L196	+81491.970	+62677.617	R167	+82330.441	+63299.259	R274	+81824.907	+58836.475
L196A	+81420.512	+62636.359	R168	+82329.247	+63302.010	R275	+81834.564	+58767.695
L277	+81855.469	+58892.428	R169	+82326.981	+63306.874	R276	+81843.713	+58772.129
L278	+81855.118	+58885.107	R170	+82325.014	+63307.546	R1A	+81863.321	+58531.439
L279	+81944.155	+58971.365	R171	+82307.834	+63298.690	XDR185	+81599.700	+62868.020
L280	+81946.277	+58971.332	R172	+82358.234	+63200.652	XDR186	+81597.600	+62868.960
L281	+81956.573	+58960.720	R173	+82353.787	+63198.366	XDR187	+81584.390	+62865.210
L282	+81947.681	+58960.858	R174	+82362.931	+63180.579	XDR188	+81625.220	+62781.120
L283	+81885.341	+58900.465	R175	+82253.866	+63125.458			
L284	+81916.973	+58807.646	R176	+82244.164	+63102.943			

NOTICE 1843 OF 2009**PROCLAMATION OF A PROVINCIAL RAILWAY LINE IN CONNECTION WITH THE GAUTRAIN RAPID RAIL LINK BETWEEN PRETORIA, JOHANNESBURG AND THE O R TAMBO INTERNATIONAL AIRPORT : DISTRICT PRETORIA**

In terms of section 11(1)(b) of the Gauteng Transport Infrastructure Act, 2001 (Act No. 8 of 2001) the MEC hereby proclaims that a provincial railway line, with varying widths, exists on Erf 665 and a portion of West Avenue in Die Hoewes Extension 222, the Remainders of Portions 112, 233, Portions 62, 154 and 226 of the farm Lyttelton 381-JR, Portion 3 of Holding 84 in Lyttelton Agricultural Holdings Extension 1, district Pretoria, as indicated on the accompanying sketch plan.

In terms of section 23(6) of the aforementioned act it is hereby declared that plan GRP03/38/32Exp which indicate the land encroached upon by the railway line in detail, is available for inspection at the office of the Department of Public Transport, Roads and Works, First Floor, South Tower, 41 Simmonds Street, Sage Life Building, Johannesburg during office hours.

Reference : 2/1/7/8 Gautrain

KENNISGEWING 1843 VAN 2009**PROKLAMASIE VAN 'N PROVINSIALE SPOORLYN IN VERBAND MET DIE GAUTREIN SNELSPoorVERBINDING-PROJEK TUSSEN PRETORIA, JOHANNESBURG EN DIE O R TAMBO INTERNASIONALE LUGHAWA : DISTRIK PRETORIA**

Ingevolge artikel 11(1)(b) van die Gauteng Transport Infrastructure Act, 2001 (Act No. 8 of 2001) proklameer die LUR hiermee dat 'n provinsiale spoorlyn, met wisselende breedtes bestaan, op Erf 665 en 'n gedeelte van Westlaan in die Hoewes Uitbreiding 222, die Restant van Gedeeltes 112, 233, Gedeeltes 62, 154 en 226 van die plaas Lyttelton 381-JR, Gedeelte 3 van Hoewe 84 in Lyttelton Landbouhoewes Uitbreiding 1, distrik Pretoria, soos op bygaande sketsplan aangetoon.

Ingevolge artikel 23(6) van voormelde wet word hiermee verklaar dat plan GRP03/38/32Exp wat die grond wat deur die toegangspad in beslag geneem is in besonderhede aantoon, by die Plankantoor van die Departement van Openbare Vervoer, Paaie en Werke, Eerste Vloer, Suidoring, Sage Life Gebou, Simmondsstraat 41, Johannesburg, deur enige belanghebbende persoon ter insae beskikbaar is.

Verwysing : 2/1/7/8 Gautrain

NOTICE 1844 OF 2009**PROCLAMATION OF A PROVINCIAL RAILWAY LINE IN CONNECTION WITH THE GAUTRAIN RAPID RAIL LINK BETWEEN PRETORIA, JOHANNESBURG AND THE O R TAMBO INTERNATIONAL AIRPORT : DISTRICT PRETORIA**

In terms of section 11(1)(b) of the Gauteng Transport Infrastructure Act, 2001 (Act No. 8 of 2001) the MEC hereby proclaims that a provincial railway line, with varying widths, exists on Erf 1 in Randjespark Estate, Portions 876, 236, 235, the Remainder of Portion 234, Portions 454, 270, 233, 232, 231, 230, 229, 339, the Remainder of Portion 313, Portion 631, the Remainder of Portion 99, Portions 505, 571, the Remainder of Portion 98, Portions 527, 550, 268, the Remainder of Portion 48, Portions 626, 628, 627 and the Remainder of the farm Randjesfontien 405-JR, the Remainders of Portions 106, 225 and Portion 133 of the farm Olievenhoutbosch 389-JR, the Remainders of Portions 106, 225 and Portion 133 of the farm Olievenhoutbosch 389-JR, Erf 1859 in Louwlandia Extension 22, Portion 264 of the farm Olievenhoutbosch 389-JR, Erf 1859 in Louwlandia extension 11, Portions 107, 53 and the Remainder of Portion 104 of the farm Brakfontein 390-JR, a portion of a street and Erf 1718 in Louwlandia Extension 46, Erf 1763 in Louwlandia Extension 47, Portions 73 and 74 of the farm Brakfontein 390-JR, Erven 923 and 924 in Louwlandia Extension 35, Portions 75 and 82 of the farm Brakfontein 390-JR, Portion 2 of Erf 877, Portion 1 and the Remainder of Erf 1766 and a portion of Freight Road in Louwlandia Extension 13, the Remainder of Portion 76 of the farm Brakfontein 390-JR, Erven 895 and 894 in Louwlandia Extension 10, the Remainder of Portion 79, Portions 80, 81 and the Remainders of Portions 11, 60, 102 of the farm Brakfontein 390-JR, district Pretoria, as indicated on the accompanying sketch plans.

In terms of section 23(6) of the aforementioned act it is hereby declared that plans GRP03/38/26Exp – 30Exp which indicate the land encroached upon by the railway line in detail, are available for inspection at the office of the Department of Public Transport, Roads and Works, First Floor, South Tower, 41 Simmonds Street, Sage Life Building, Johannesburg during office hours.

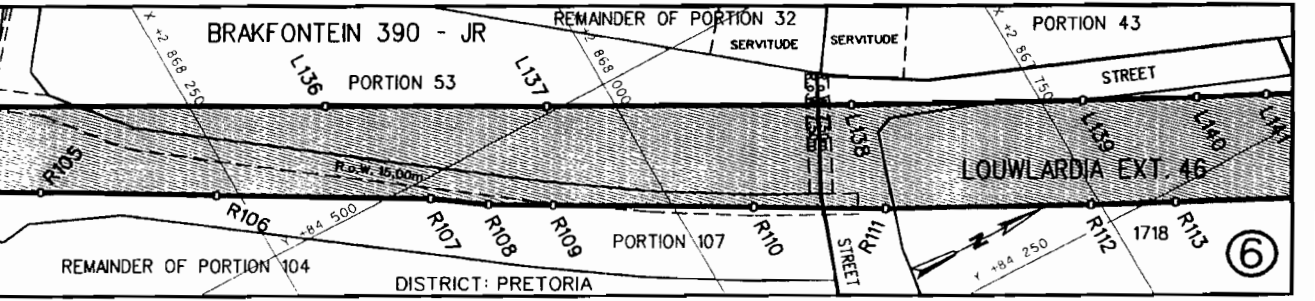
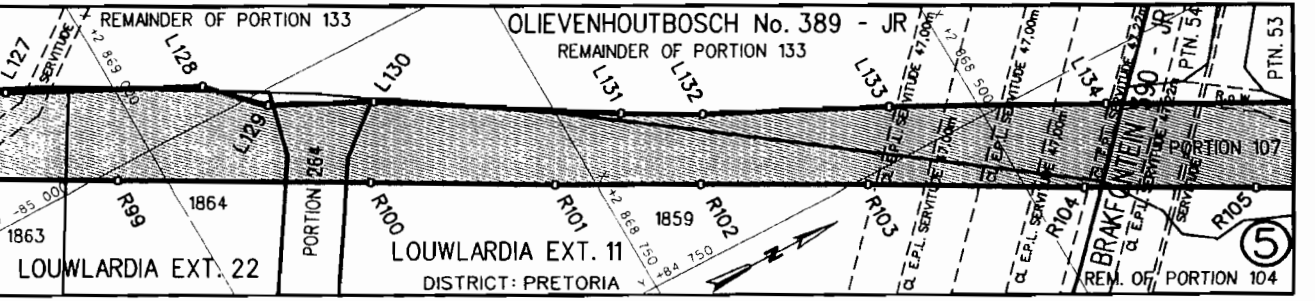
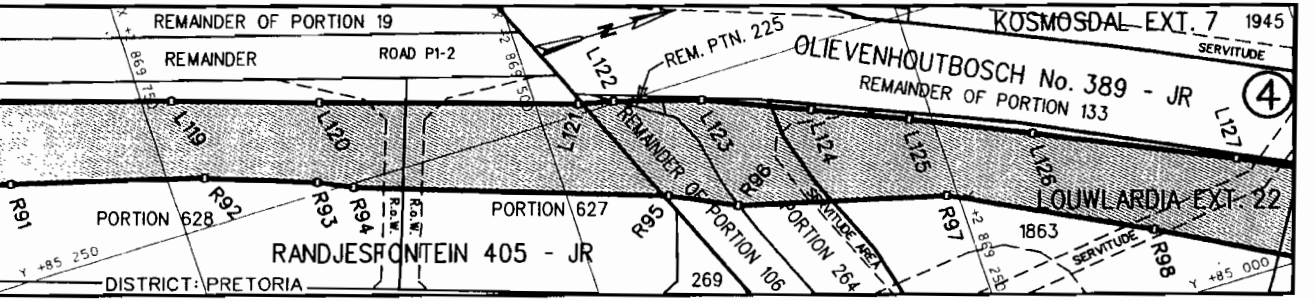
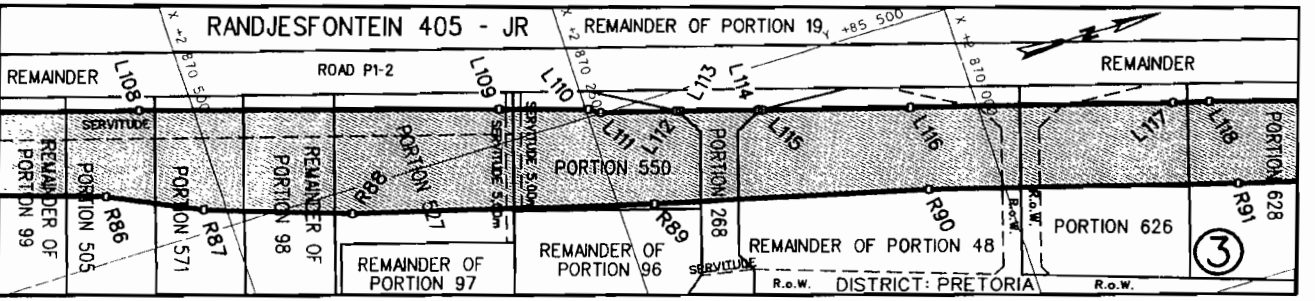
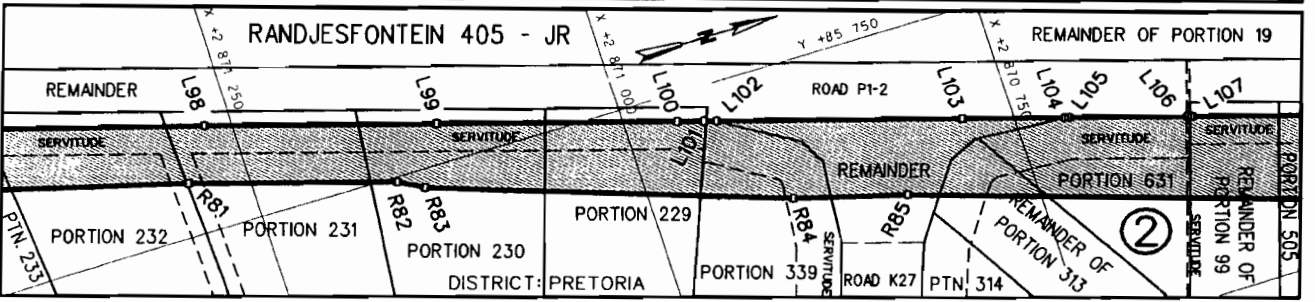
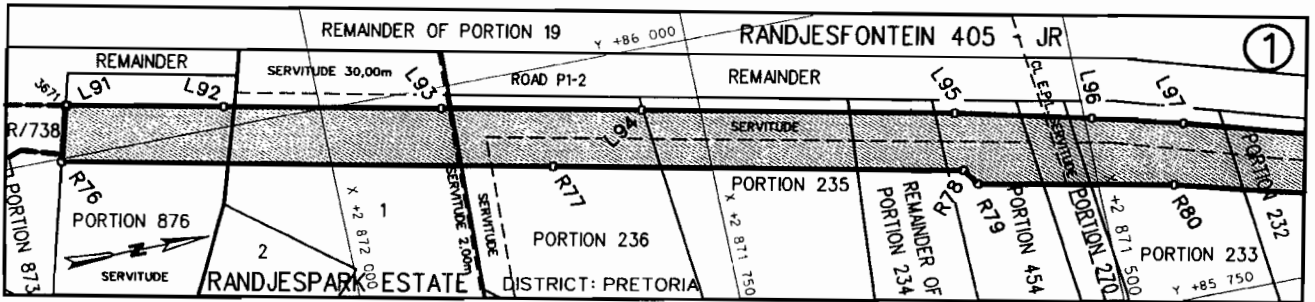
Reference : 2/1/7/8 Gautrain

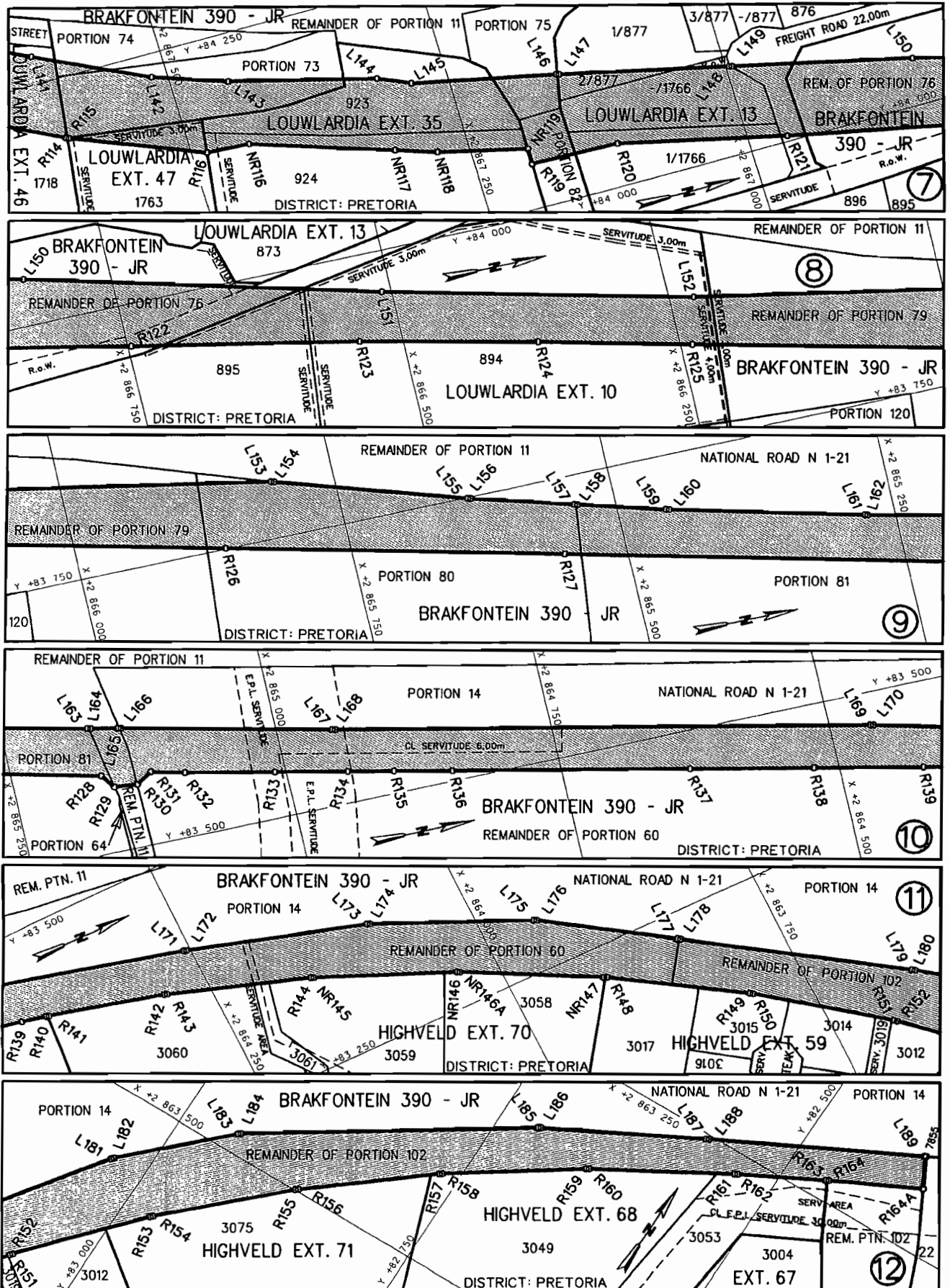
KENNISGEWING 1844 VAN 2009**PROKLAMASIE VAN 'N PROVINSIALE SPOORLYN IN VERBAND MET DIE GAUTREIN SNELSPoorVERBINDING-PROJEK TUSSEN PRETORIA, JOHANNESBURG EN DIE O R TAMBO INTERNASIONALE LUGHAWE : DISTRIK PRETORIA**

Ingevolge artikel 11(1)(b) van die Gauteng Transport Infrastructure Act, 2001 (Act No. 8 of 2001) proklameer die LUR hiermee dat 'n provinsiale spoorlyn, met wisselende breedtes bestaan, op Erf 1 in Randjespark Estate, Gedeeltes 876, 236, 235, die Restant van Gedeelte 234, Gedeeltes 454, 270, 233, 232, 231, 230, 229, 339, die Restant van Gedeelte 313, Gedeelte 631, die Restant van Gedeelte 99, Gedeeltes 505, 571, die Restant van Gedeelte 98, Gedeeltes 527, 550, 268, die Restant van Gedeelte 48, Gedeeltes 626, 628, 627 en die Restant van die plaas Randjesfontein 405-JR, die Restante van Gedeeltes 106, 225 en Gedeelte 133 van die plaas Olievenhoutbosch 389-JR, Erwe 1863 en 1864 in Louwlandia Uitbreiding 22, Gedeelte 264 van die plaas Olievenhoutbosch 389-JR in Louwlandia Uitbreiding 11, Gedeeltes 107, 53 en die Restant van Gedeelte 104 van die plaas Brakfontein 390-JR, 'n gedeelte van 'n straat en Erf 1718 in Louwlandia Uitbreiding 46, Erf 1763 in Louwlandia Uitbreiding 47, Gedeeltes 73 en 74 van die plaas Brakfontein 390-JR, Erwe 923 en 924 in Louwlandia Uitbreiding 35, Gedeeltes 75 en 82 van die Plaas Brakfontein 390-JR, Gedeelte 2 van Erf 877, Gedeelte 1 en die Restant van Erf 1766 en 'n gedeelte van Freightweg in Louwlandia Uitbreiding 13, die Restant van Gedeelte 76 van die plaas Brakfontein 390-JR, Erwe 895 en 894 in Louwlandia Uitbreiding 10, die Restant van Gedeelte 79, Gedeeltes 80, 81 en die Restante van Gedeeltes 11, 60, 102 van die plaas Brakfontein390-JR, distrik Pretoria, soos op bygaande sketsplanne aangetoon.

Ingevolge artikel 23(6) van voormelde wet word hiermee verklaar dat planne GRP03/38/26Exp – 30Exp wat die grond wat deur die toegangspad in beslag geneem is in besonderhede aantoon, by die Plankantoor van die Departement van Openbare Vervoer, Paaie en Werke, Eerste Vloer, Suidtoring, Sage Life Gebou, Simmondsstraat 41, Johannesburg, deur enige belanghebbende persoon ter insae beskikbaar is.

Verwysing : 2/1/7/8 Gautrain





REFERENCE / VERWYSINGS

GEPROKLAAMEERDE SPOORLYN
PROCLAIMED RAILWAY LINE



DIE FIGUUR : 3671, L91 - L189, 7855, R164A, R164 - R148, NR147, NR146A, NR146, NR145, R144 - R76, 3671.
THE FIGURE :

VERTEENWOORDIG DIE PROKLAMASIE VAN DIE BETROKKE GEDEELTE VAN DIE SPOORLYN OOR ERF 1 IN RANDJESPARK ESTATE, GEDEELTES 876, 236, 235, DIE RESTANT VAN GEDEELTE 234, GEDEELTES 454, 270, 233, 232, 231, 230, 229, 339, DIE RESTANT VAN GEDEELTE 313, GEDEELTE 631, DIE RESTANT VAN GEDEELTE 99, GEDEELTES 505, 571, DIE RESTANT VAN GEDEELTE 98, GEDEELTES 527, 550, 268, DIE RESTANT VAN GEDEELTE 48, GEDEELTES 626, 628, 627 EN DIE RESTANT VAN DIE PLAAS RANDJESFONTEIN 405-JR, DIE RESTANTE VAN GEDEELTES 106, 225 EN GEDEELTE 133 VAN DIE PLAAS OLIEVENHOUTBOSCH 389-JR, ERWE 1863 EN 1864 IN LOUWLARDIA UITBREIDING 22, GEDEELTE 264 VAN DIE PLAAS OLIEVENHOUTBOSCH 389-JR, ERF 1859 IN LOUWLARDIA UITBREIDING 11, GEDEELTES 107, 53 EN DIE RESTANT VAN GEDEELTE 104 VAN DIE PLAAS BRAKFONTEIN 390-JR, 'N GEDEELTE VAN 'N STRAAT EN ERF 1718 IN LOUWLARDIA UITBREIDING 46, ERF 1763 IN LOUWLARDIA UITBREIDING 47, GEDEELTES 73 EN 74 VAN DIE PLAAS BRAKFONTEIN 390-JR, ERWE 923 EN 924 IN LOUWLARDIA UITBREIDING 35, GEDEELTES 75 EN 82 VAN DIE PLAAS BRAKFONTEIN 390-JR, GEDEELTE 2 VAN ERF 877, GEDEELTE 1 EN DIE RESTANT VAN ERF 1766 EN 'N GEDEELTE VAN FREIGHTWEG IN LOUWLARDIA UITBREIDING 13, DIE RESTANT VAN GEDEELTE 76 VAN DIE PLAAS BRAKFONTEIN 390-JR, ERWE 895 EN 894 IN LOUWLARDIA UITBREIDING 10, DIE RESTANT VAN GEDEELTE 79, GEDEELTES 80, 81 EN DIE RESTANTE VAN GEDEELTES 11, 60, 102 VAN DIE PLAAS BRAKFONTEIN 390-JR SOOS BEDOEL BY DIE AFKONDIGING DAARVAN IN DIE PROVINSIALE KOERANT EN IN DETAIL GETOON OP PLANNE GRP 03/38/26Exp-30Exp.

REPRESENTS THE PROCLAMATION OF THE PORTION CONCERNED OF THE RAILWAY LINE OVER ERF 1 IN RANDJESPARK ESTATE, PORTIONS 876, 236, 235, THE REMAINDER OF PORTION 234, PORTIONS 454, 270, 233, 232, 231, 230, 229, 339, THE REMAINDER OF PORTION 313, PORTION 631, THE REMAINDER OF PORTION 99, PORTIONS 505, 571, THE REMAINDER OF PORTION 98, PORTIONS 527, 550, 268, THE REMAINDER OF PORTION 48, PORTIONS 626, 628, 627 AND THE REMAINDER OF THE FARM RANDJESFONTEIN 405-JR, THE REMAINDERS OF PORTIONS 106, 225, AND PORTION 133 OF THE FARM OLIEVENHOUTBOSCH 389-JR, ERVEN 1863 AND 1864 IN LOUWLARDIA EXTENSION 22, PORTION 264 OF THE FARM OLIEVENHOUTBOSCH 389-JR, ERF 1859 IN LOUWLARDIA EXTENSION 11, PORTIONS 107, 53 AND THE REMAINDER OF PORTION 104 OF THE FARM BRAKFONTEIN 390-JR, A PORTION OF A STREET AND ERF 1718 IN LOUWLARDIA EXTENSION 46, ERF 1763 IN LOUWLARDIA EXTENSION 47, PORTIONS 73 AND 74 OF THE FARM BRAKFONTEIN 390-JR, ERVEN 923 AND 924 IN LOUWLARDIA EXTENSION 35, PORTIONS 75 AND 82 OF THE FARM BRAKFONTEIN 390-JR, PORTION 2 OF ERF 877, PORTION 1 AND THE REMAINDER OF ERF 1766 AND A PORTION OF FREIGHT ROAD IN LOUWLARDIA EXTENSION 13, THE REMAINDER OF PORTION 76 OF THE FARM BRAKFONTEIN 390-JR, ERVEN 895 AND 894 IN LOUWLARDIA EXTENSION 10, THE REMAINDER OF PORTION 79, PORTIONS 80, 81 AND THE REMAINDERS OF PORTIONS 11, 60, 102 OF THE FARM BRAKFONTEIN 390-JR AS INTENDED BY THE PUBLICATION THEREOF IN THE PROVINCIAL GAZETTE AND SHOWN IN DETAIL ON PLANS GRP 03/38/26Exp-30Exp.

BUNDEL NR. / FILE NO. 2/1/7/8-GAUTRAIN

KOÖRDINATE LYS/CO-ORDINATE LIST WG 29° KONST./CONST. Y= +/- 0.00 X= +2 800 000.00

L91	+86036.110	+72165.242	L156	+83748.320	+65629.970	R105	+84616.977	+68366.542
L92	+86014.478	+72062.896	L157	+83721.174	+65537.359	R106	+84557.514	+68263.848
L93	+85984.368	+71920.749	L158	+83720.330	+65534.480	R107	+84485.749	+68139.889
L94	+85956.380	+71788.617	L159	+83697.353	+65456.080	R108	+84463.149	+68107.986
L95	+85912.421	+71583.622	L160	+83696.552	+65453.189	R109	+84442.034	+68070.395
L96	+85890.705	+71495.339	L161	+83650.930	+65278.692	R110	+84374.847	+67953.083
L97	+85875.089	+71437.026	L162	+83650.209	+65275.780	R111	+84331.091	+67876.596
L98	+85824.088	+71267.872	L163	+83625.401	+65169.542	R112	+84266.876	+67755.490
L99	+85778.321	+71119.498	L164	+83624.753	+65166.613	R113	+84241.649	+67706.527
L100	+85730.429	+70964.843	L165	+83619.596	+65141.940	R114	+84190.679	+67607.942
L101	+85725.207	+70947.675	L166	+83618.945	+65139.012	R115	+84189.413	+67605.225
L102	+85722.687	+70939.560	L167	+83574.203	+64949.393	R116	+84139.589	+67485.669
L103	+85674.255	+70783.175	L168	+83573.538	+64946.467	NR116	+84137.089	+67445.823
L104	+85654.026	+70717.943	L169	+83467.775	+64462.600	NR117	+84093.493	+67317.773
L105	+85653.138	+70715.077	L170	+83467.079	+64459.683	NR118	+84080.522	+67279.675
L106	+85630.045	+70640.573	L171	+83414.340	+64256.188	NR119	+84060.044	+67197.808
L107	+85629.157	+70637.708	L172	+83413.522	+64253.302	R119	+84044.461	+67197.886
L108	+85597.228	+70534.855	L173	+83363.975	+64092.520	R120	+84042.107	+67116.726
L109	+85523.704	+70305.010	L174	+83362.910	+64089.722	R121	+84005.578	+66964.033
L110	+85505.101	+70247.841	L175	+83299.485	+63950.722	R122	+83958.803	+66746.872
L111	+85500.380	+70240.829	L176	+83298.025	+63948.113	R123	+83915.992	+66539.369
L112	+85485.900	+70192.314	L177	+83225.178	+63839.724	R124	+83877.890	+66376.678
L113	+85485.027	+70189.444	L178	+83223.505	+63837.234	R125	+83843.265	+66239.024
L114	+85469.634	+70139.770	L179	+83102.777	+63657.575	R126	+83750.780	+65862.545

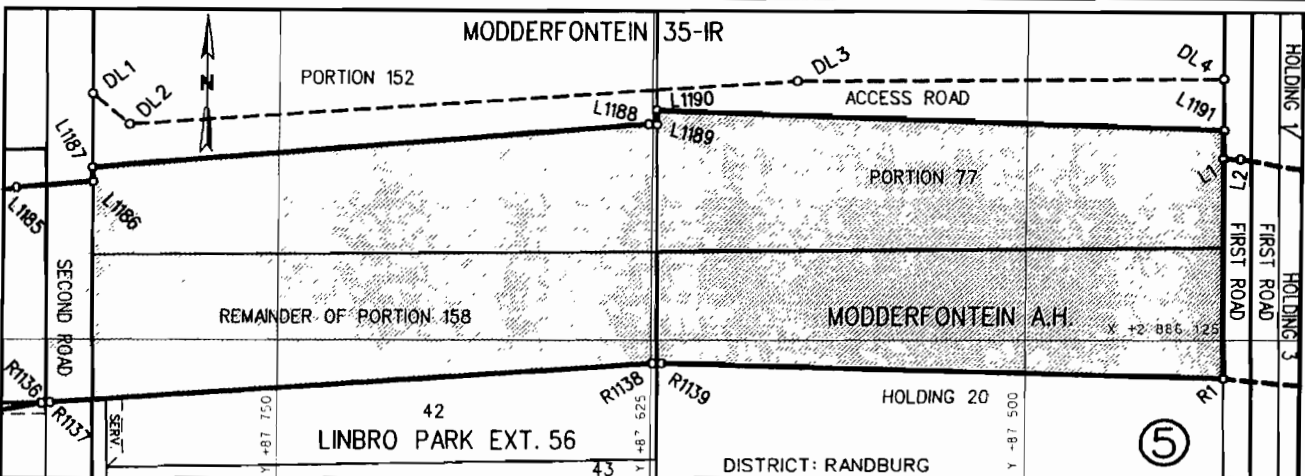
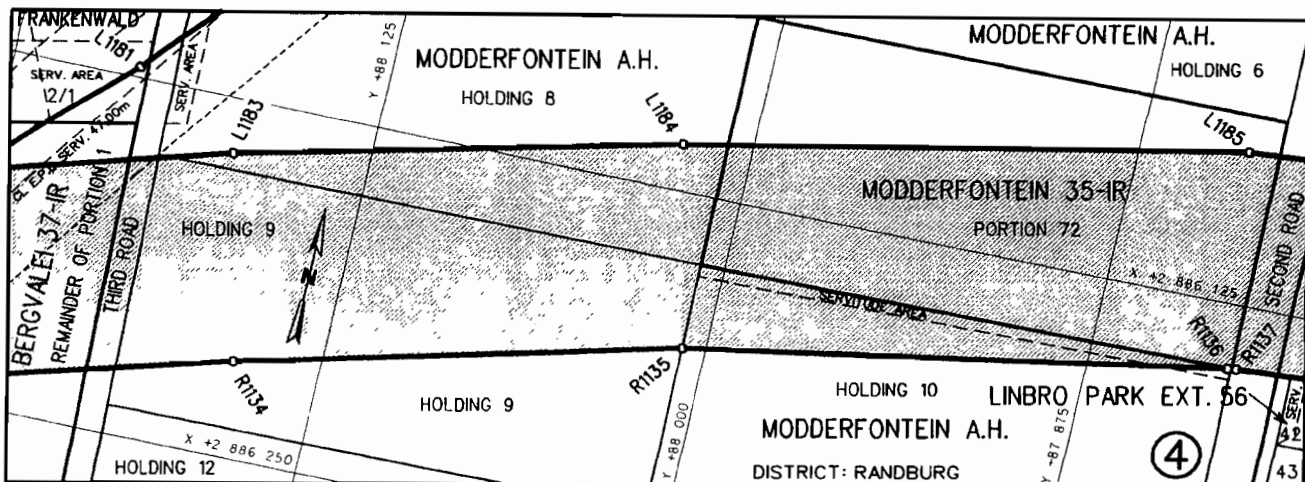
KOÖRDINATE LYS/CO-ORDINATE LIST WG 29° KONST./CONST. Y= +/- 0.00 X= +2 800 000.00					
L115	+85468.755	+70136.902	L180	+83101.050	+63655.123
L116	+85440.020	+70042.182	L181	+83033.871	+63564.048
L117	+85389.543	+69876.305	L182	+83031.894	+63561.806
L118	+85382.721	+69852.604	L183	+82947.636	+63481.536
L119	+85343.487	+69730.485	L184	+82945.295	+63479.680
L120	+85311.790	+69636.674	L185	+82714.314	+63328.406
L121	+85257.106	+69472.155	L186	+82711.735	+63326.879
L122	+85251.579	+69449.105	L187	+82577.244	+63255.339
L123	+85233.926	+69392.166	L188	+82574.586	+63253.947
L124	+85204.371	+69324.686	L189	+82396.583	+63162.144
L125	+85177.899	+69264.419	L190	+82393.916	+63160.770
L126	+85142.907	+69189.464	R76	+85997.648	+72176.952
L127	+85083.177	+69065.518	R77	+85929.027	+71854.928
L128	+85022.442	+68947.360	R78	+85871.194	+71585.880
L129	+84989.298	+68915.116	R79	+85859.583	+71578.197
L130	+84957.563	+68852.340	R80	+85833.119	+71451.615
L131	+84869.329	+68711.326	R81	+85788.024	+71290.224
L132	+84842.184	+68663.521	R82	+85746.419	+71156.740
L133	+84786.216	+68551.992	R83	+85736.884	+71140.407
L134	+84717.466	+68424.636	R84	+85653.622	+70907.260
L135	+84651.568	+68304.937	R85	+85632.708	+70833.741
L136	+84576.589	+68170.254	R86	+85545.519	+70574.436
L137	+84504.699	+68040.812	R87	+85516.190	+70514.826
L138	+84406.131	+67861.344	R88	+85482.935	+70421.060
L139	+84333.753	+67725.179	R89	+85426.851	+70226.013
L140	+84299.260	+67658.490	R90	+85380.288	+70048.576
L141	+84278.103	+67616.825	R91	+85320.557	+69851.599
L142	+84226.571	+67514.773	R92	+85284.261	+69725.823
L143	+84202.520	+67447.316	R93	+85257.838	+69655.115
L144	+84166.809	+67314.256	R94	+85247.061	+69633.509
L145	+84153.024	+67284.460	R95	+85175.672	+69434.081
L146	+84123.844	+67152.355	R96	+85154.275	+69391.850
L147	+84123.170	+67149.431	R97	+85117.889	+69257.096
L148	+84086.620	+66996.879	R98	+85051.954	+69133.621
L149	+84085.919	+66993.962	R99	+84991.732	+69028.969
L150	+84046.653	+66830.667	R100	+84908.408	+68881.817
L151	+83959.136	+66508.682	R101	+84847.121	+68774.490
L152	+83888.764	+66227.647	R102	+84799.320	+68688.484
L153	+83806.221	+65807.540	R103	+84745.040	+68590.660
L154	+83805.248	+65804.702	R104	+84672.719	+68465.725
L155	+83749.207	+65632.835	R127	+83675.108	+65556.606
			R128	+83577.316	+65167.100
			R129	+83563.830	+65157.277
			R130	+83561.893	+65136.688
			R131	+83571.145	+65121.859
			R132	+83563.411	+65090.624
			R133	+83545.706	+65009.935
			R134	+83531.149	+64944.142
			R135	+83522.048	+64902.423
			R136	+83510.239	+64848.761
			R137	+83462.987	+64634.037
			R138	+83438.398	+64522.260
			R139	+83416.453	+64422.606
			R140	+83411.222	+64399.593
			R141	+83410.508	+64396.680
			R142	+83382.742	+64291.390
			R143	+83381.876	+64288.520
			R144	+83338.784	+64162.230
			NR145	+83337.702	+64159.434
			NR146	+83284.558	+64037.146
			NR146A	+83283.253	+64034.447
			NR147	+83220.437	+63916.973
			R148	+83218.918	+63914.389
			R149	+83147.202	+63803.100
			R150	+83145.479	+63800.549
			R151	+83064.471	+63694.631
			R152	+83062.555	+63692.326
			R153	+82973.235	+63593.334
			R154	+82971.138	+63591.191
			R155	+82874.082	+63499.759
			R156	+82871.819	+63497.793
			R157	+82768.461	+63415.127
			R158	+82766.047	+63413.351
			R159	+82655.453	+63338.689
			R160	+82652.910	+63337.101
			R161	+82536.890	+63270.249
			R162	+82534.263	+63268.800
			R163	+82462.997	+63231.180
			R164	+82460.331	+63229.803
			R164A	+82380.781	+63189.600
			3671	+86036.408	+72166.710
			7855	+82395.250	+63161.460

NOTICE 1845 OF 2009**PROCLAMATION OF A PROVINCIAL RAILWAY LINE IN CONNECTION WITH THE GAUTRAIN RAPID RAIL LINK BETWEEN PRETORIA, JOHANNESBURG AND THE OR TAMBO INTERNATIONAL AIRPORT**

In terms of section 11(1)(b) of the Gauteng Transport Infrastructure Act, 2001 (Act No. 8 of 2001) the MEC hereby proclaims that a provincial railway line with varying widths exits over the Remainders of Portions 24 and 1 of the farm Bergvalei 37-IR, Portion 4 of Erf 52, a portion of Starfield Drive, Portions 2 and 3 of Erf 1 in Frankenwald, a portion of Third Road in Linbro Park Extension 34, portions of Third Road, Holdings 2, 8, 9, 10, 20, portions of First Avenue and Second Road in Modderfontein Agricultural Holdings, the Remainders of Portions 71, 80, 158, Portions 138, 72, 152 and 77 of the farm Modderfontein 35-IR, a portion of the farm Longmeadow 297-IR districts Kempton and Randburg, as indicated on the accompanying sketch plans.

In terms of section 23(6) of the aforementioned act it is hereby declared that plans GRP 03/38/10 Exp and 19 EXP which indicates the land encroached upon by the railway line in detail are available for inspection at the office of the Department of Public Transport, Roads and Works, 41 Simmonds Street, Sage Life Building, Johannesburg during office hours.

Reference: 2/1/7/8 Gautrain



REFERENCE / VERWYSINGS

GEPROKLAAMEERDE SPOORLYN
PROCLAIMED RAILWAY LINE



DIE FIGUUR : MSL19, L1148 - L1152, 2510, L1153, 2511, L1154 - L1169, MIA L1, MIA R1, L1172 - L1191, L1, R1,
THE FIGURE : R1139 - R1133, MSR14, MSL19.

VERTEENWOORDIG DIE PROKLAMASIE VAN DIE BETROKKE GEDEELTE VAN DIE SPOORLYN OOR DIE RESTANTE VAN GEDEELTES 24 EN 1 VAN DIE PLAAS BERGVALEI 37-IR, GEDEELTE 4 VAN ERF 52, 'N GEDEELTE VAN STARFIELDRYLAAN, GEDEELTES 2 EN 3 VAN ERF 1 IN FRANKENWALD, 'N GEDEELTE VAN DERDEWEG IN LINBROPARK UITBREIDING 34, GEDEELTES VAN DERDEWEG, HOEWES 2, 8, 9, 10, 20, GEDEELTES VAN EERSTELAAN EN TWEEDEWEG IN MODDERFONTEIN LANDBOUHOEWES, DIE RESTANTE VAN GEDEELTES 71, 80, 158, GEDEELTES 138, 72, 152 EN 77 VAN DIE PLAAS MODDERFONTEIN 35-IR, 'N GEDEELTE VAN DIE PLAAS LONGMEADOW 297-IR SOOS BEDOEL BY DIE AFKONDIGING DAARVAN IN DIE PROVINSIALE KOERANT EN IN DETAIL GETOON OP PLANNE GRP 03/38/10Exp EN 19Exp.

REPRESENTS THE PROCLAMATION OF THE PORTION CONCERNED OF THE RAILWAY LINE OVER THE REMAINDERS OF PORTIONS 24 AND 1 OF THE FARM BERGVALEI 37-IR, PORTION 4 OF ERF 52, A PORTION OF STARFIELD DRIVE, PORTIONS 2 AND 3 OF ERF 1 IN FRANKENWALD, A PORTION OF THIRD ROAD IN LINBRO PARK EXTENSION 34, PORTIONS OF THIRD ROAD, HOLDINGS 2, 8, 9, 10, 20, PORTIONS OF FIRST AVENUE AND SECOND ROAD IN MODDERFONTEIN AGRICULTURAL HOLDINGS, THE REMAINDERS OF PORTIONS 71, 80, 158, PORTIONS 138, 72, 152, AND 77 OF THE FARM MODDERFONTEIN 35-IR, A PORTION OF THE FARM LONGMEADOW 297-IR AS INTENDED BY THE PUBLICATION THEREOF IN THE PROVINCIAL GAZETTE AND SHOWN IN DETAIL ON PLANS GRP 03/38/10Exp AND 19Exp.

KOÖRDINATE LYS/CO-ORDINATE LIST WG 29° KONST./CONST. Y= +/- 0.00 X= +2 800 000.00									
MSL19	+88623.775	+86264.862	L1160	+88206.772	+86036.974	L1182	+88256.403	+86169.482	
MSR14	+88611.156	+86320.448	L1161	+88185.739	+86006.930	L1183	+88170.069	+86144.378	
			L1162	+88148.977	+85955.158	L1184	+88023.324	+86108.721	
MIA L1	+88045.990	+85590.623	L1163	+88124.563	+85914.163	L1185	+87838.571	+86071.140	
MIA R1	+87980.494	+85591.294	L1164	+88102.078	+85871.703	L1186	+87812.294	+86068.960	
			L1165	+88083.452	+85826.987	L1187	+87812.331	+86063.946	
L1	+87434.589	+86060.400	L1166	+88070.466	+85779.950	L1188	+87626.361	+86048.401	
R1	+87434.004	+86138.837	L1167	+88062.998	+85732.632	L1189	+87623.562	+86048.552	
			L1168	+88054.937	+85685.889	L1190	+87623.600	+86043.548	
L1147	+88623.775	+86264.862	L1169	+88048.812	+85638.562	L1191	+87434.664	+86050.391	
L1148	+88562.819	+86250.369	L1170	+88045.990	+85590.623				
L1149	+88475.540	+86220.635	L1171	+87980.494	+85591.294	R1132	+88611.156	+86320.448	
L1150	+88354.184	+86152.022	L1172	+87981.740	+85644.099	R1133	+88252.569	+86243.435	
L1151	+88324.968	+86128.367	L1173	+87985.371	+85696.695	R1134	+88154.005	+86215.999	
L1152	+88301.266	+86106.319	L1174	+87995.841	+85748.030	R1135	+88007.851	+86179.351	
L1153	+88298.673	+86105.427	L1175	+88009.262	+85798.660	R1136	+87828.937	+86147.922	
L1154	+88296.081	+86104.534	L1176	+88026.280	+85849.103	R1137	+87825.964	+86147.557	
L1155	+88257.154	+86068.231	L1177	+88046.913	+85897.737	R1138	+87624.426	+86133.435	
L1156	+88235.236	+86066.906	L1178	+88071.392	+85944.060	R1139	+87421.431	+86133.374	
L1157	+88223.528	+86054.535	L1179	+88098.553	+85988.409				
L1158	+88210.798	+86054.280	L1180	+88139.754	+86043.896	2510	+88300.170	+86105.300	
L1159	+88210.925	+86041.187	L1181	+88207.191	+86121.430	2511	+88297.180	+86105.560	

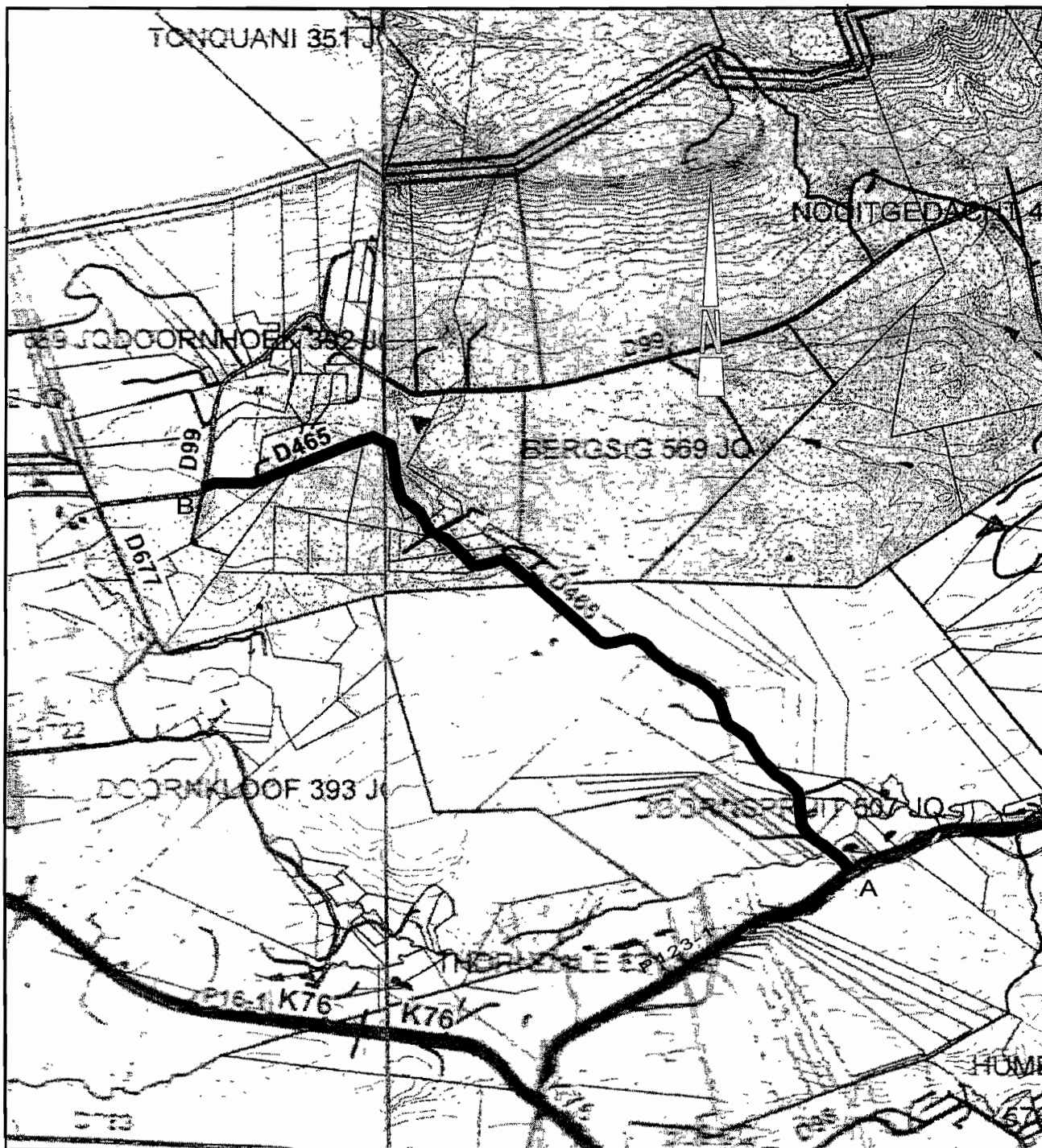
NOTICE 1846 OF 2009**TAKING OVER OF A PORTION OF PROVINCIAL ROAD 465 FROM PROVINCIAL ROAD D99 TO PROVINCIAL ROAD P123-1 BY THE PLUMARI RANCH HEKPOORT (PTY) LTD: GAUTENG PROVINCE**

In terms of section 51(2) (a) of the Gauteng Transport Infrastructure Act, 2001 (Act No. 8 of 2001) it is hereby notified for general information that in terms of an agreement entered into between the Plumari Ranch Hekpoort (Pty) Ltd and the Department of Public Transport Roads and Works, the aforementioned Company takes over all responsibilities for or in relation to a portion of Provincial Road 465, as indicated on the accompanying sketch plan and that the portions of the aforementioned roads are no longer provincial roads for the purposes of the said Act as from the date of this Notice, provided that they remain open for the use of the public, subject to certain access control measures laid down by the said Company.

Details in the above regard can be obtained from the offices of the Department of Public Transport, Roads and Works at Sage Life Building, 41 Simmonds Street, Johannesburg or Private Bag X83, Marshalltown 2107, Tel : (011)355 7264 Fax : (011) 355 7235

MEC Resolution: 009 OF 2009

Reference: 2/1/1/2/3/1-465



REFERENCE

TAKING OVER OF ROAD



THE LINE : A - B
 REPRESENTS THE TAKING OVER OF PROVINCIAL ROAD 465 AS CONTEMPLATED
 BY THE PUBLICATION THEREOF IN THE PROVINCIAL GAZETTE

NOTICE 1847 OF 2009**PROPOSED ACCESS CONTROL ON PROVINCIAL ROADS WITHIN THE DINOKENG NATURE RESERVE: GAUTENG PROVINCE**

In terms of section 46 of the Gauteng Transport Infrastructure Act, 2001 (Act 8 of 2001), it is hereby notified for general information that an application from the Dinokeng Game Reserve Management Association, one of the Blue IQ Projects of the Gauteng Province, has been received for the restriction of access on sections of the following provincial roads:

- North-western entrance on the Rust De Winter Road (D48) at Steve Bikoville
GPS Position: 25°22' 42.3"S
28°18' 33.7"E
- North-eastern entrance on the Rust De Winter Road (D48) at the Limpopo border
GPS – 25°19' 17.6"S
28°24' 42.7E
- South-western entrance on the Boekenhoutskloof Road (D734) at the start of the Boekenhoutskloof Road
GPS 25°24'04.7S
28°18'24.1E
- South-eastern entrance on the Boekenhoutskloof Road (D734) at the Boekenhoutskloof Military base
GPS 25°26' 25.1S
28°23' 27.0E

The purpose of the application is to regulate traffic through the Dinokeng Game Reserve Area by means of gates, booms and grids manned on a 24 hour basis, and to introduce a **40-60 km** per hour speed limit on the sections of the roads that pass through the game reserve. Details of the proposals can be obtained from Ms N Buitendag, Department of Public Transport and Roads at Sage Life Building, 41 Simmonds Street, Johannesburg or Private Bag X83, Marshalltown 2107, Tel : (011)355 7264.

Interested parties are requested to lodge written comments on or objections to the proposals within 30 days of the date of this notice. Comments or objections must be forwarded in writing to the Director: Design, at the above Department and address.

Any comments or objections received will be considered and decided upon by the Member of the Executive Council responsible for provincial roads in Gauteng Province and a decision, based on the merits of the application will be forwarded to everyone that made submissions.

Reference: 2/2/3/1-1



VERWYSING / REFERENCE

Voorgestelde Toegang Beheer Hekke
Proposed Access Control Gates



KOÖRDINATE LYS / CO-ORDINATE LIST

North-western entrance (Road 48)	25° 22' 42.3" S	28° 18' 33.7" E
North-eastern entrance (Road 48)	25° 19' 17.6" S	28° 24' 42.7" E
South-western entrance (Road 734)	25° 24' 04.7" S	28° 18' 24.1" E
South-eastern entrance (Road 734)	25° 26' 25.1" S	28° 23' 27.0" E

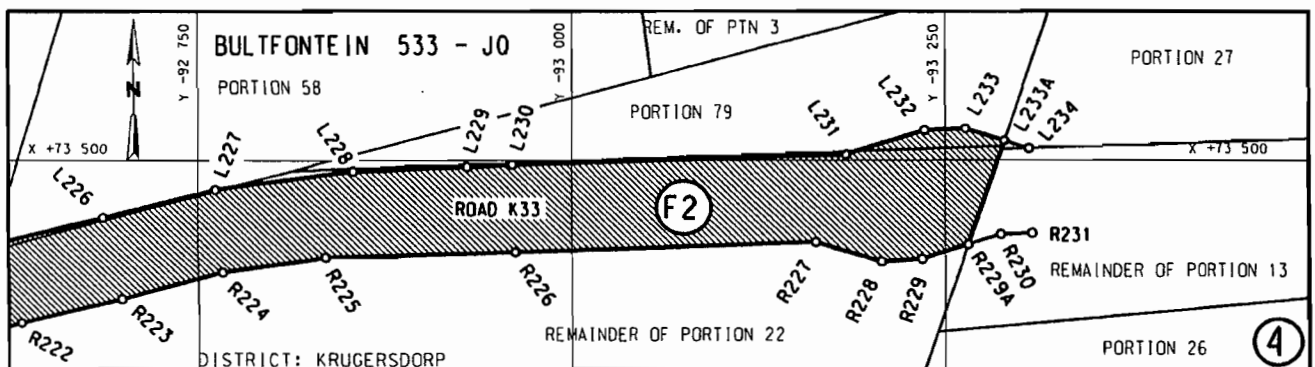
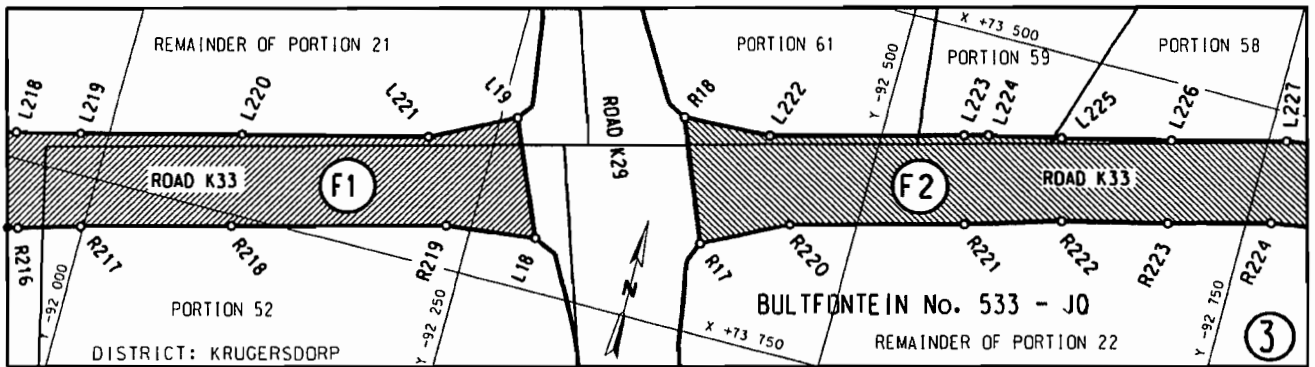
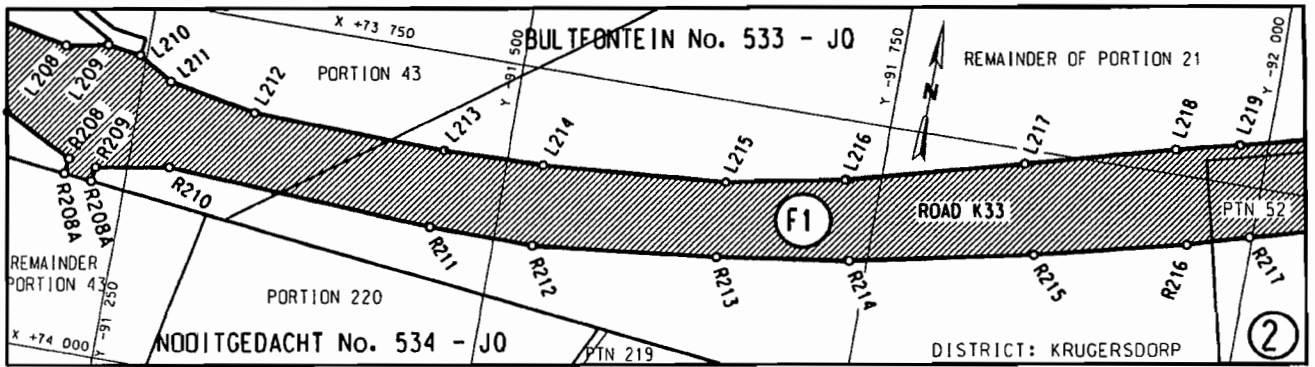
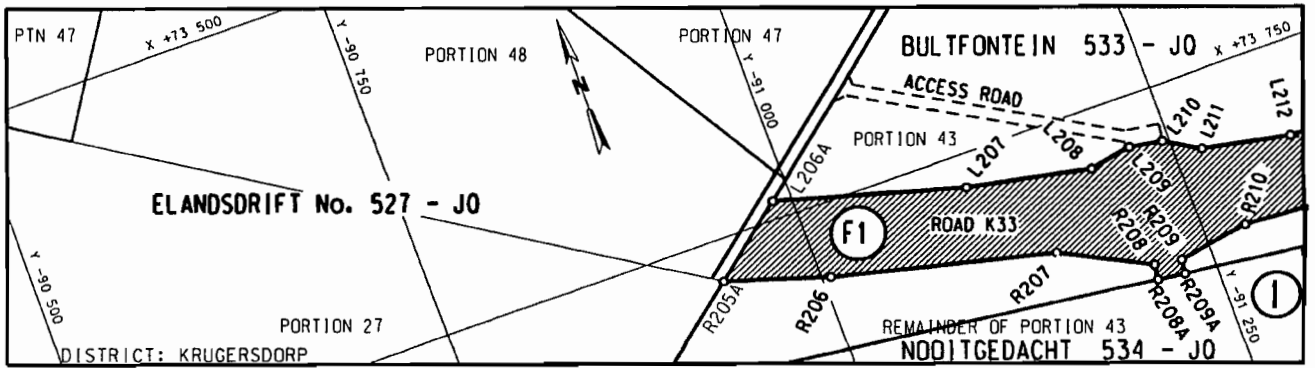
NOTICE 1848 OF 2009**PROCLAMATION OF PORTIONS CONCERNED OF PROVINCIAL ROAD K33,
DISTRICT KRUGERSDORP**

In terms of section 11(2) of the Gauteng Transport Infrastructure Act, 2001 (Act No. 8 of 2001) the MEC hereby proclaims a portion of provincial road K33 over Portions 43,21,52,61,59,58,79,27, the remainders of Portions 22 and 13 of the farm Bultfontein 533 JQ as indicated on the accompanying sketch plan.

In terms of section 23(6) of the aforementioned act it is hereby declared that boundary beacons, demarcating the increase in the width of the portion of the road reserve in question, have been placed on the land and that plans GRP 07/49/5Exp – 6Exp which indicates the land encroached upon by the said road is available for inspection by any interested person in the Plan Room of the Department of Public Transport, Roads and Works, 41 Simmonds Street, Sage Life Building, Johannesburg during office hours.

MEC Resolution: 001 of 26 January 2009

Reference: 2/1/1/2/3/1 –K29(4)
2/1/1/2/3/1-K33



REFERENCE / VERWYSINGS

GEPROKLAAMEERDE PAD
PROCLAIMED ROAD



DIE FIGURE : 1: L206A, L207 - L221, L19, L18, R219 - R209, R209A, R208A, R208 - R206, R205A, L206A.
THE FIGURES : 2: R18, L222 - L233, L233A, R229A, R229 - R220, R17, R18.

VERTEENWOORDIG DIE PROKLAMASIE VAN DIE BETROKKE GEDEELTES VAN PROVINSIALE PAD K33 GEDEELTES 43, 21, 52, 61, 59, 58, 79, 27, DIE RESTANTE VAN GEDEELTES 22 EN 13 VAN DIE PLAAS BULTFONTEIN 533-JO SOOS BEDDEEL BY DIE AFKONDIGING DAARVAN IN DIE PROVINSIALE KOERANT EN IN DETAIL GETOON OP PLANNE GRP 07/49/5E_{XP}-6E_{XP}.

REPRESENT THE PROCLAMATION OF THE PORTIONS CONCERNED OF PROVINCIAL ROAD K33 OVER PORTIONS 43, 21, 52, 61, 59, 58, 79, 27, THE REMAINDERS OF PORTIONS 22 AND 13 OF THE FARM BULTFONTEIN 533-JO AS INTENDED BY THE PUBLICATION THEREOF IN THE PROVINCIAL GAZETTE AND SHOWN IN DETAIL ON PLANS GRP 07/49/5E_{XP}-6E_{XP}.

BUNDEL NR. / FILE NO. 2/1/1/2/3/1-K29(4)

KOORDINATE LYS/CO-ORDINATE LIST WG 29 KONST./CONST. Y= +/- 0.00 X= +2 800 000.00

L18	-92294.137	+73713.761	L226	-92686.566	+73539.335	R212	-91527.011	+73872.075
L19	-92260.949	+73636.744	L227	-92761.754	+73519.745	R213	-91650.602	+73858.636
L206A	-90987.612	+73737.200	L228	-92853.898	+73507.245	R214	-91738.291	+73846.047
L207	-91112.003	+73772.667	L229	-92929.443	+73504.210	R215	-91858.625	+73820.798
L208	-91195.613	+73789.477	L230	-92960.148	+73502.823	R216	-91957.014	+73796.348
L209	-91223.306	+73784.142	L231	-93183.911	+73495.971	R217	-91998.271	+73784.191
L210	-91245.422	+73787.608	L232	-93236.352	+73479.121	R218	-92095.791	+73757.904
L211	-91269.053	+73802.024	L233	-93263.336	+73478.174	R219	-92233.863	+73720.687
L212	-91328.059	+73813.578	L233A	-93289.295	+73486.451	R220	-92456.902	+73660.566
L213	-91456.790	+73817.521	L234	-93305.837	+73491.725	R221	-92568.904	+73630.375
L214	-91524.573	+73816.128				R222	-92630.962	+73611.576
L215	-91648.028	+73806.546	R17	-92402.353	+73688.734	R223	-92698.774	+73595.013
L216	-91726.177	+73791.336	R18	-92370.055	+73607.335	R224	-92766.274	+73576.787
L217	-91842.228	+73759.969	R205A	-90937.701	+73778.691	R225	-92835.400	+73566.704
L218	-91938.871	+73732.883	R206	-91005.867	+73800.253	R226	-92962.252	+73562.786
L219	-91981.614	+73722.397	R207	-91152.975	+73836.192	R227	-93163.994	+73555.706
L220	-92086.153	+73695.254	R208	-91210.841	+73866.207	R228	-93207.493	+73569.189
L221	-92206.400	+73664.912	R208A	-91209.092	+73876.879	R229	-93234.442	+73567.242
L222	-92428.474	+73605.052	R209	-91229.131	+73869.092	R229A	-93265.215	+73557.355
L223	-92553.028	+73571.477	R209A	-91227.614	+73879.098	R230	-93286.883	+73550.393
L224	-92568.477	+73567.313	R210	-91277.789	+73860.743	R231	-93307.870	+73549.656
L225	-92616.127	+73556.540	R211	-91456.657	+73871.521			

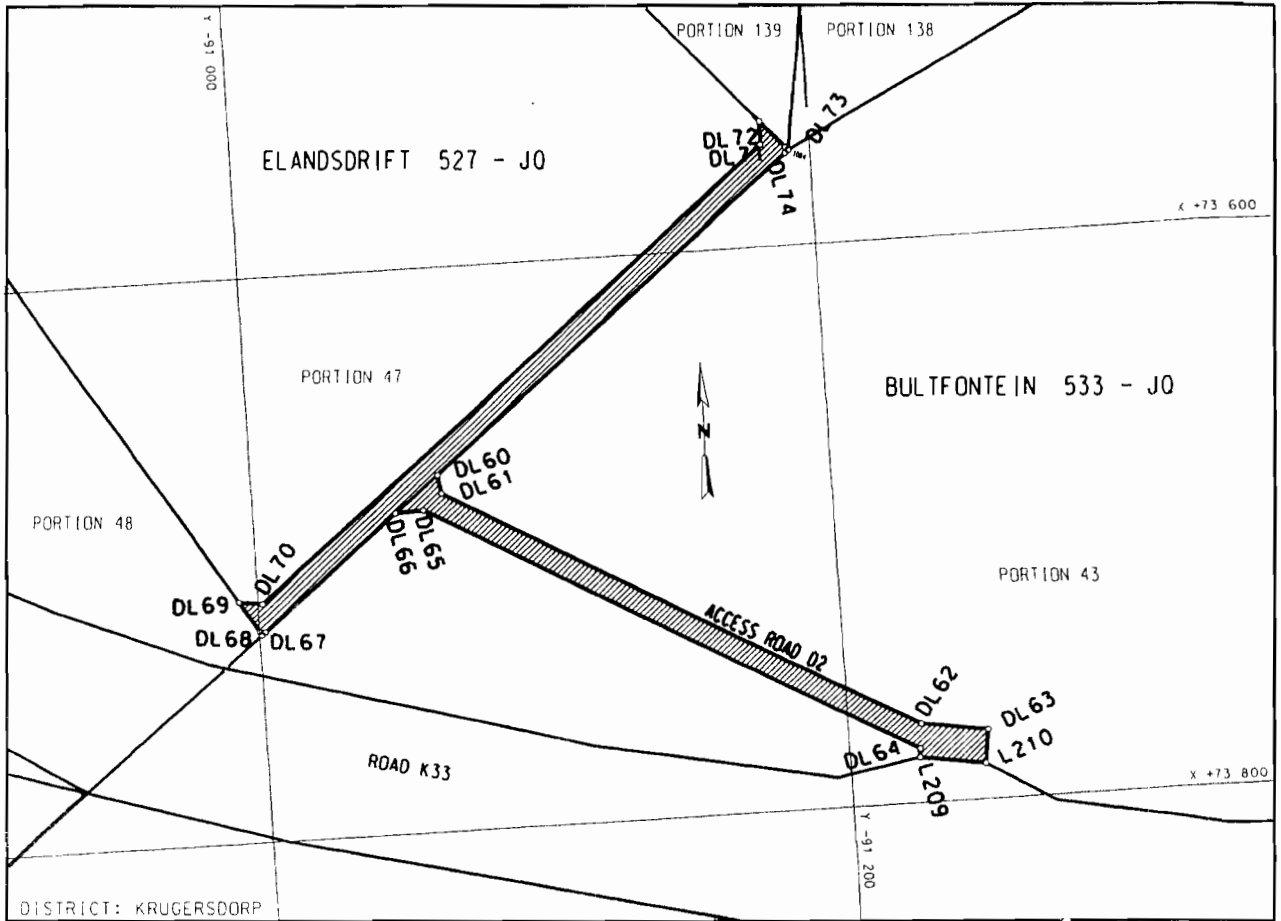
NOTICE 1849 OF 2009**PROCLAMATION OF AN ACCESS ROAD IN CONNECTION WITH K33,
DISTRICT KRUGERSDORP**

In terms of section 13 (1) of the Gauteng Transport Infrastructure Act, 2001 (Act No. 8 of 2001) the MEC hereby proclaims that an access road exists over Portions 47 of the farm Elandsdrift 527 JQ and Portion 43 of the farm Bultfontein 533 JQ indicated on the accompanying sketch plan.

In terms of section 23(6) of the aforementioned act it is hereby declared that boundary beacons demarcating the said access roads, have been placed and that plan GRP 07/49/5Exp which indicates the land encroached upon by virtue of the proclamation of the access road is available for inspection by any interested person in the Plan Room of the Department of Public Transport, Roads and Work, 41 Simmonds Street, Sage Life Building, Johannesburg during office hours.

Reference: 2/1/1/2/3/1-K29(4)
2/1/1/2/3/1-K33

MEC Resolution: 001 dated 26 January 2009



REFERENCE / VERWYSINGS

GEPROKLAAMEERDE TOEGANGSPAD
PROCLAIMED ACCESS ROAD



DIE FIGUUR : DL60 - DL63, L210, L209, DL64 - DL74, DL60.
THE FIGURE :

VERTEENWOORDIG DIE PROKLAMASIE VAN DIE TOEGANGSPAD OOR GEDEELTE 47 VAN DIE PLAAS ELANDSDRIFT 527-JO EN GEDEELTE 43 VAN DIE PLAAS BULTFONTEIN 533-JO SOOS BEDOEL BY DIE AFKONDIGING DAARVAN IN DIE PROVINSIALE KOERANT EN IN DETAIL GETOON OP PLAN GRP 07/49/5E_{XP}.

REPRESENTS THE PROCLAMATION OF THE ACCESS ROAD OVER PORTION 47 OF THE FARM ELANDSDRIFT 527-JO AND PORTION 43 OF THE FARM BULTFONTEIN 533-JO AS INTENDED BY THE PUBLICATION THEREOF IN THE PROVINCIAL GAZETTE AND SHOWN IN DETAIL ON PLANS GRP 07/49/5E_{XP}.

BUNDEL NR. / FILE NO. 2/1/1/2/3/1-K29(4)

KOORDINATE LYS/CO-ORDINATE LIST WG 29 KONST./CONST. Y= +/- 0.00 X= +2 800 000.00

L209	-91223.306	+73784.142	DL64	-91223.808	+73780.936	DL70	-91001.553	+73715.207
L210	-91245.422	+73787.608	DL65	-91058.599	+73685.650	DL71	-91183.037	+73564.345
DL60	-91064.342	+73673.416	DL66	-91048.962	+73686.201	DL72	-91183.474	+73556.179
DL61	-91065.194	+73680.219	DL67	-91001.973	+73725.261	DL73	-91191.685	+73565.609
DL62	-91224.698	+73772.214	DL68	-91000.044	+73724.936	DL74	-91191.517	+73567.699
DL63	-91247.280	+73775.753	DL69	-90993.496	+73714.103			

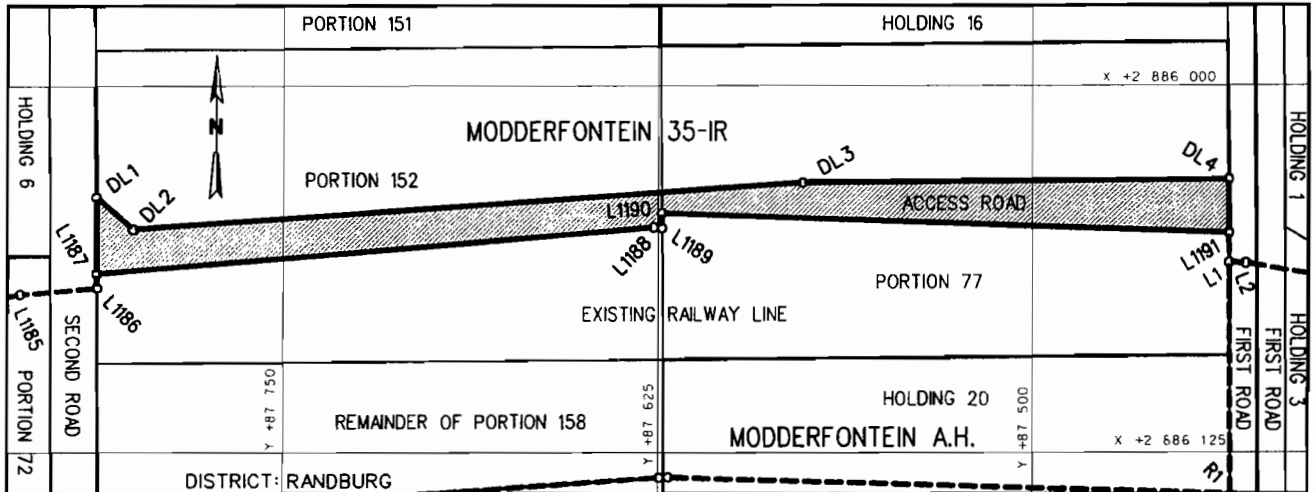
NOTICE 1850 OF 2009**PROCLAMATION OF AN ACCESS ROAD IN CONNECTION WITH THE GAUTRAIN RAPID RAIL LINK BETWEEN PRETORIA, JOHANNESBURG AND THE O.R. TAMBO INTERNATIONAL AIRPORT**

In terms of section 13 (1) of the Gauteng Transport Infrastructure Act, 2001 (Act No. 8 of 2001) the MEC hereby proclaims that an access road exists over Portions 152 and 77 of the farm Modderfontein 35 IR as indicated on the accompanying sketch plan.

In terms of section 23(6) of the aforementioned act it is hereby declared that plan GRP 03/38/10 Exp which indicates the land encroached upon by virtue of the proclamation of the access road is available for inspection by any interested person in the Plan Room of the Department of Public Transport, Roads and Works, 41 Simmonds Street, Sage Life Building, Johannesburg during office hours.

Reference: 2/1/C/8/P/1a

MEC Resolution 008 of 8 April 2009



REFERENCE / VERWYSINGS

GEPROKLAAMEERDE TOEGANGSPAD
PROCLAIMED ACCESS ROAD



DIE FIGUUR
THE FIGURE : DL1 - DL4, L1191 - L1187, DL1.

VERTEENWOORDIG DIE PROKLAMASIE VAN 'N TOEGANGSPAD OOR GEDEELTES 152 EN 77 VAN DIE PLAAS MODDERFONTEIN 35-IR SOOS BEDOEL BY DIE AFKONDIGING DAARVAN IN DIE PROVINSIALE KOERANT EN IN DETAIL GETOON OP PLAN GRP 03/38/10Exp

REPRESENTS THE PROCLAMATION OF AN ACCESS ROAD OVER PORTIONS 152 AND 77 OF THE FARM MODDERFONTEIN 35-IR AS INTENDED BY THE PUBLICATION THEREOF IN THE PROVINCIAL GAZETTE AND SHOWN IN DETAIL ON PLAN GRP 03/38/10Exp.

BUNDEL NR. / FILE NO. 2/1/7/8-GAUTRAIN

KOÖRDINATE LYS/CO-ORDINATE LIST WG 29° KONST./CONST. Y= +/- 0.00 X= +2 800 000.00

L1187	+87812.331	+86063.946	L1191	+87434.664	+86050.391	DL3	+87576.275	+86033.205
L1188	+87626.361	+86048.401				DL4	+87434.799	+86032.181
L1189	+87623.562	+86048.552	DL1	+87812.524	+86038.103			
L1190	+87623.600	+86043.548	DL2	+87800.267	+86048.967			