

***THE PROVINCE OF  
GAUTENG***

***DIE PROVINSIE  
GAUTENG***

**Provincial Gazette Extraordinary  
Buitengewone Provinsiale Koerant**

**Vol. 15**

**PRETORIA, 8 JULY 2009  
JULIE**

**No. 158**

---

**CONTENTS • INHOUD**

<i>No.</i>		<i>Page No.</i>	<i>Gazette No.</i>
<b>GENERAL NOTICES</b>			
2184	Gauteng Transport Infrastructure Act (8/2001): Closure of a portion of the Provincial Railway Line in connection with the Gautrain Rapid Rail Link between Pretoria, Johannesburg and the OR Tambo International Airport: District Pretoria .....	3	158
2185	do.: Proclamation of a portion of the Provincial Railway Line in connection with the Gautrain Rapid Rail Link between Pretoria, Johannesburg and the OR Tambo International Airport: District Pretoria.....	5	158

---

---

## GENERAL NOTICES

---

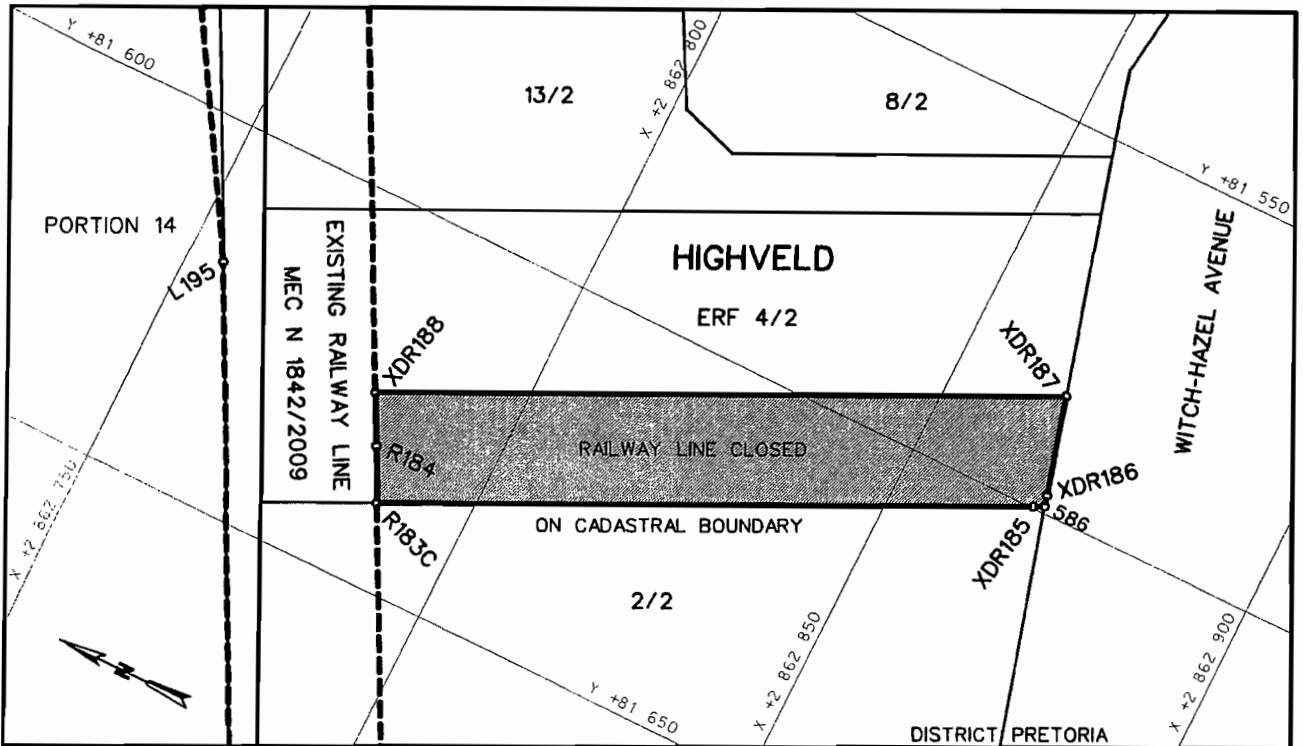
### NOTICE 2184 OF 2009

#### **CLOSURE OF A PORTION OF THE PROVINCIAL RAILWAY LINE IN CONNECTION WITH THE GAUTRAIN RAPID RAIL LINK BETWEEN PRETORIA, JOHANNESBURG AND THE O R TAMBO INTERNATIONAL AIRPORT : DISTRICT PRETORIA**

In terms of section 11(1)(d) of the Gauteng Transport Infrastructure Act, 2001 (Act No. 8 of 2001) the MEC hereby proclaims the closure of a portion of the provincial railway line on Portion 4 of Erf 2 in Highveld, district Pretoria, as indicated on the accompanying sketch plan.

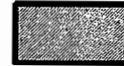
In terms of section 23(6) of the aforementioned act it is hereby declared that plan GRP03/38/31Exp which indicates the closure of a portion of the railway line on the property concerned in detail, is available for inspection at the office of the Department of Public Transport, Roads and Works, First Floor, South Tower, 41 Simmonds Street, Sage Life Building, Johannesburg during office hours.

Reference : 2/1/7/8 Gautrain



**REFERENCE / VERWYSINGS**

SPOORLYN GESLUIT  
RAILWAY LINE CLOSED



DIE FIGUUR : R183C, XDR185, 586, XDR186 - XDR188, R184, R183C.  
THE FIGURE :

VERTEENWOORDIG DIE PROKLAMASIE VAN DIE SLUITING VAN DIE BETROKKE GEDEELTE VAN DIE SPOORLYN OOR GEDEELTE 4 VAN ERF 2 IN HIGHVELD SOOS BEDOEL BY DIE AFKONDIGING DAARVAN IN DIE PROVINSIALE KOERANT EN IN DETAIL GETOON OP PLAN GRP 03/38/31Exp.

REPRESENTS THE PROCLAMATION OF THE CLOSURE OF THE PORTION CONCERNED OF THE RAILWAY LINE OVER PORTION 4 OF ERF 2 IN HIGHVELD AS INTENDED BY THE PUBLICATION THEREOF IN THE PROVINCIAL GAZETTE AND SHOWN IN DETAIL ON PLAN GRP 03/38/31Exp.

BUNDEL NR. / FILE NO. 2/1/7/8-GAUTRAIN

**KOÖRDINATE LYS/CO-ORDINATE LIST WG 29° KONST./CONST. Y= +/- 0.00 X= +2 800 000.00**

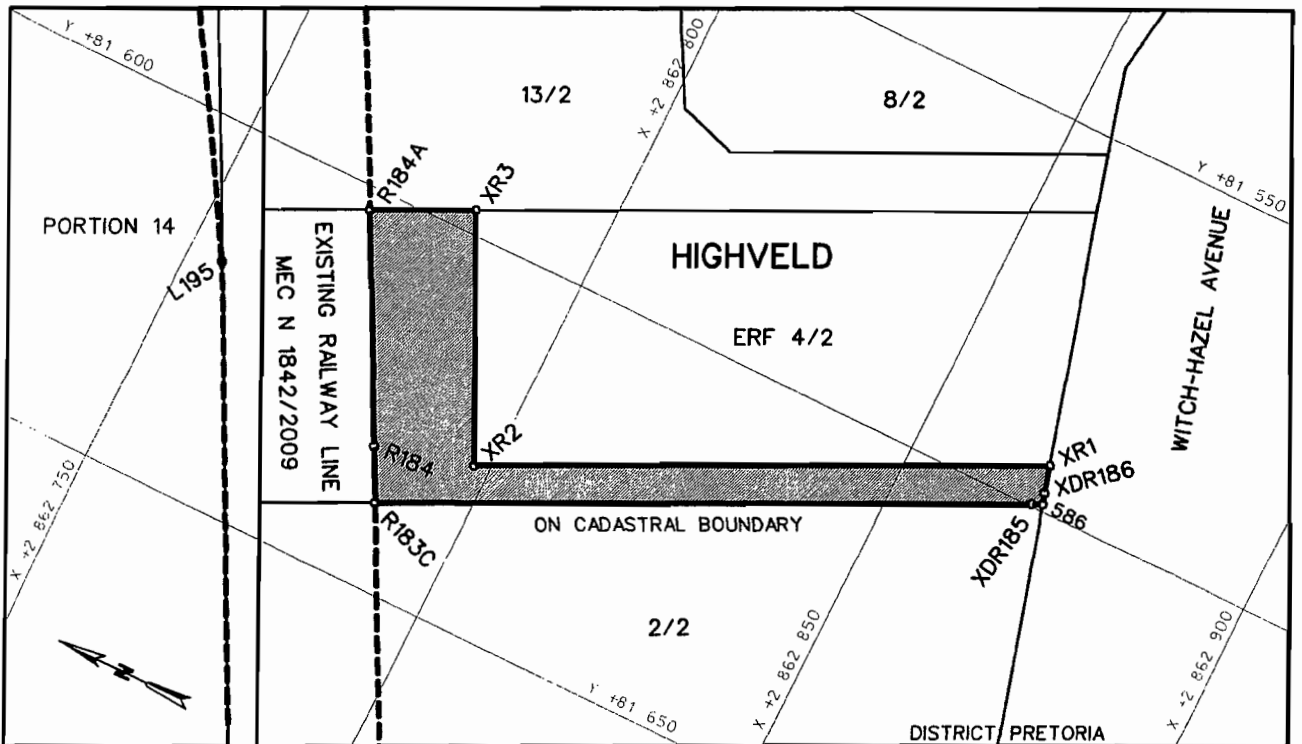
R183C	+81638.526	+62788.038	XDR186	+81597.600	+62868.960	586	+81599.041	+62869.368
R184	+81631.693	+62784.486	XDR187	+81584.390	+62865.210			
XDR185	+81599.700	+62868.020	XDR188	+81625.220	+62781.120			

**NOTICE 2185 OF 2009****PROCLAMATION OF A PORTION OF THE PROVINCIAL RAILWAY LINE IN CONNECTION WITH THE GAUTRAIN RAPID RAIL LINK BETWEEN PRETORIA, JOHANNESBURG AND THE O R TAMBO INTERNATIONAL AIRPORT : DISTRICT PRETORIA**

In terms of section 11(1)(b) of the Gauteng Transport Infrastructure Act, 2001 (Act No. 8 of 2001) the MEC hereby proclaims that a provincial railway line, with varying widths, exists on Portion 4 of Erf 2 in Higveld, district Pretoria, as indicated on the accompanying sketch plan.

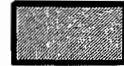
In terms of section 23(6) of the aforementioned act it is hereby declared that plan GRP03/38/31Exp which indicates the land encroached upon by the railway line in detail, is available for inspection at the office of the Department of Public Transport, Roads and Works, First Floor, South Tower, 41 Simmonds Street, Sage Life Building, Johannesburg during office hours.

Reference : 2/1/7/8 Gautrain



**REFERENCE / VERWYSINGS**

GEPROKLAAMEERDE SPOORLYN  
PROCLAIMED RAILWAY LINE



DIE FIGUUR : R183C, R184, R184A, XR3, XR2, XR1, XDR186, 586, XDR185, R183C.  
THE FIGURE :

VERTEENWOORDIG DIE PROKLAMASIE VAN DIE BETROKKE GEDEELTE VAN DIE SPOORLYN OOR GEDEELTE 4 VAN ERF 2 IN HIGHVELD SOOS BEDOEL BY DIE AFKONDIGING DAARVAN IN DIE PROVINSIALE KOERANT EN IN DETAIL GETOON OP PLAN GRP 03/38/31Exp.

REPRESENTS THE PROCLAMATION OF THE PORTION CONCERNED OF THE RAILWAY LINE OVER PORTION 4 OF ERF 2 IN HIGHVELD AS INTENDED BY THE PUBLICATION THEREOF IN THE PROVINCIAL GAZETTE AND SHOWN IN DETAIL ON PLAN GRP 03/38/31Exp.

BUNDEL NR. / FILE NO. 2/1/7/8-GAUTRAIN

**KOÖRDINATE LYS/CO-ORDINATE LIST WG 29° KONST./CONST. Y= +/- 0.00 X= +2 800 000.00**

R183C	+81638.526	+62788.038	XR1	+81593.953	+62867.925	XDR185	+81599.700	+62868.020
R184	+81631.693	+62784.486	XR2	+81628.166	+62797.779	XDR186	+81597.600	+62868.960
R184A	+81603.020	+62769.590	XR3	+81596.770	+62782.466	586	+81599.041	+62869.368