

***THE PROVINCE OF
GAUTENG***

***DIE PROVINSIE
GAUTENG***

**Provincial Gazette Extraordinary
Buitengewone Provinsiale Koerant**

Vol. 15

**PRETORIA, 22 JULY
JULIE 2009**

No. 164

CONTENTS • INHOUD

<i>No.</i>		<i>Page No.</i>	<i>Gazette No.</i>
GENERAL NOTICES			
2345	Gauteng Transport Infrastructure Act (8/2001): Application by E.P.S. (Structural, Civil and Transportation Engineers) for the amendment of the preliminary design of a portion of Provincial Road K109 at the intersection with Road K68	3	164
2346	do.: Proposed acceptance of the preliminary design for the Gautrain Rapid Rail Link Phase 2: Section 2 (portion of the tunnel section) variant alignment: Katherine Street Tunnel (north of Mushroom Farm Park, east of M1 Freeway)	5	164
2347	do.: Proclamation of a provincial railway line in connection with the Gautrain Rapid Rail Link between Pretoria, Johannesburg and the OR Tambo International Airport: District of Kempton Park.....	7	164
2348	do.: do.: District of Randburg.....	10	164
2349	do.: Proclamation of the deviation and closing of portions of the provincial railway line in connection with the Gautrain Rapid Rail Link between Pretoria, Johannesburg and the OR Tambo International Airport: District of Randburg	13	164

GENERAL NOTICES

NOTICE 2345 OF 2009

DEPARTMENT OF PUBLIC TRANSPORT, ROADS AND WORKS

APPLICATION BY E. D. S (STRUCTURAL, CIVIL & TRANSPORTATION ENGINEERS) FOR THE AMENDMENT OF THE PRELIMINARY DESIGN OF A PORTION OF PROVINCIAL ROAD K109 AT THE INTERSECTION WITH ROAD K68

It is hereby notified for general information that E. D. S has lodged a written application in terms of section 8(9) of the Gauteng Transport Infrastructure Act, 2001 (Act No. 8 of 2001) for the amendment of a portion of the preliminary design of provincial road K109 at the intersection with road K68.

The proposed amendment of the preliminary design in question is indicated on accompanying sketch plan. Any written comments or objections must be submitted to the Director: Design: Department of Public Transport, Roads and Works, Private Bag X83, Marshalltown 2107 (Fax (011) 355 7126) within 30 (thirty) days after the date of this notice.

Reference: 2/1/1/2/3/1-K109

KENNISGEWING 2345 VAN 2009

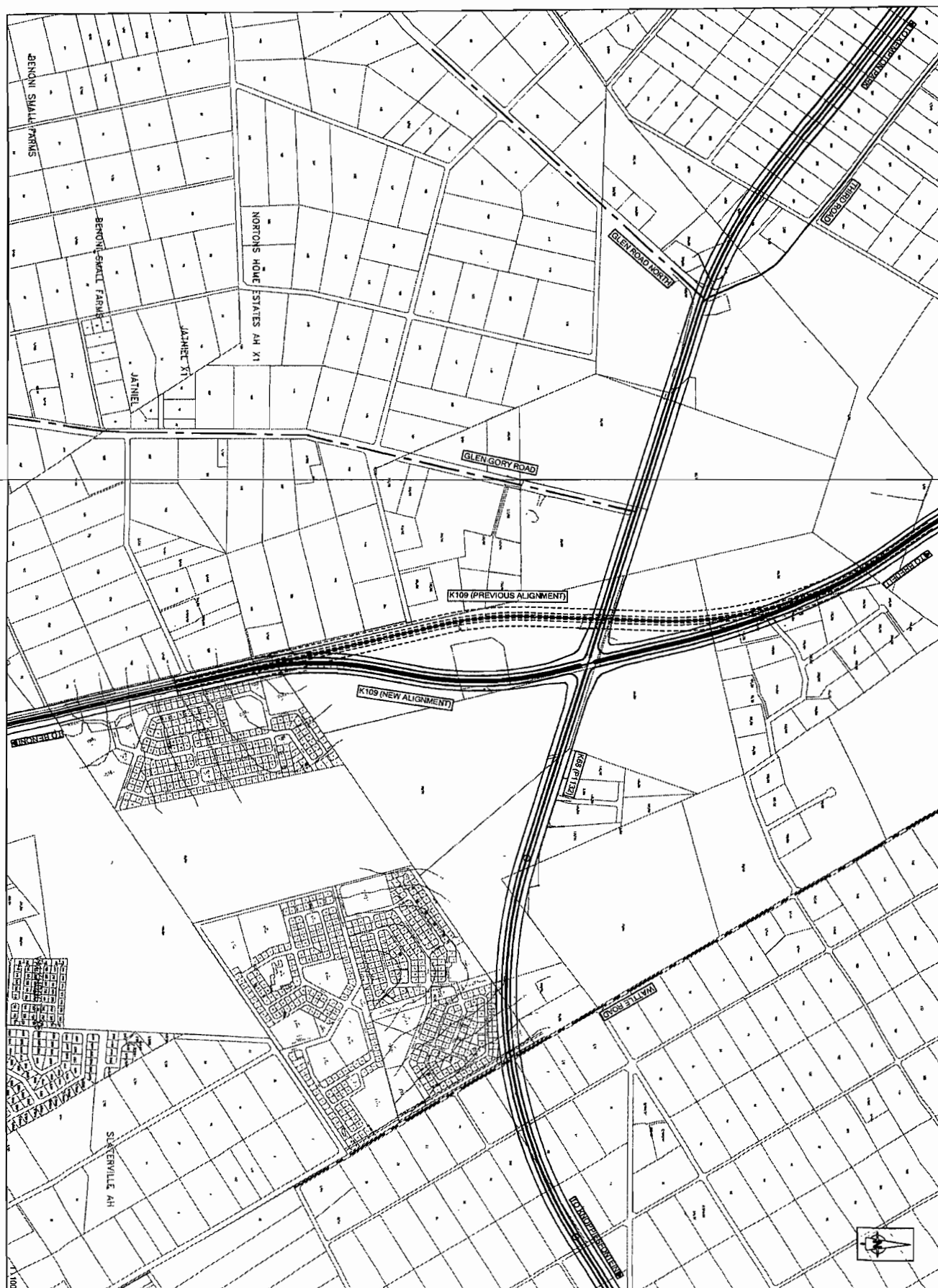
DEPARTEMENT VAN OPENBARE VERVOER, PAAIE EN WERKE

AANSOEK DEUR E. D. S (STRUCTURAL CIVIL & TRANSPORTATION ENGINEERS) VIR DIE WYSIGING VAN DIE VOORLOPIGE ONTWERP VAN 'N GEDEELTE VAN PROVINSIALE PAD K109 BY DIE INTERSEKSIE MET PAD K68.

Hiermee word vir algemene inligting bekend gemaak dat E.D.S ingevolge artikel 8(9) van die Gauteng Transport Infrastructure Act, 2001 (Act No. 8 of 2001) 'n skriftelike aansoek ingedien het om 'n wysiging van 'n gedeelte van die voorlopige ontwerp van provinsiale pad K109 by die interseksie met pad K68.

Die voorgestelde wysiging van die betrokke voorlopige ontwerp is aangedui op bygaande sketsplan. Enige skriftelike kommentaar of beswaar moet binne 30 (dertig) dae na die datum van hierdie kennisgewing by die Direkteur: Ontwerp: Departement van Openbare Vervoer, Paaie en Werke, Privaatsak X83, Marshalltown 2107 (Faks (011) 355 7235) ingedien word.

Verwysing: 2/1/1/2/3/1-K109



NOTICE 2346 OF 2009**PROPOSED ACCEPTANCE OF THE PRELIMINARY DESIGN FOR THE GAUTRAIN RAPID RAIL LINK PHASE 2: SECTION 2 (PORTION OF THE TUNNEL SECTION) VARIANT ALIGNMENT - KATHERINE STREET TUNNEL (NORTH OF MUSHROOM FARM PARK - EAST OF M1 FREEWAY)**

The Member of the Executive Council for Public Transport, Roads and Works of Gauteng Province ("MEC") hereby gives notice that a preliminary design for the Gautrain Rapid Rail Link Phase 2: Section 2 (Portion of the tunnel section) Variant alignment – Katherine Street Tunnel (north of Mushroom Farm Park up to east of M1 Freeway, been prepared in terms of section 8(4) (a) of the Gauteng Transport Infrastructure Act, 2001, (Act 8 of 2001) ("the Act ") and, if applicable, an environmental report in terms of section 8(4) (b) thereof.

Notice is also given that the MEC intends to take a decision on the draft preliminary design. Interested and affected parties are invited to submit written comments on the preliminary design and environmental report (if applicable) within 21 days after the date of this notice by hand or by post for attention: Director: Design: Department of Public Transport, Roads and Works, Private Bag X83, Marshalltown, 2017, or 3rd floor, South Tower, Sage Life Building, 41 Simmonds Street, Johannesburg, or by fax to number 011 634 0561.

Notice is also given that the regulatory measures contemplated in section 9 of the Act will take effect on publication of the acceptance of the preliminary design. These measures appear from that section, which is quoted below for convenience:

"Regulatory measures in respect of accepted preliminary designs

9. (1) As from the publication of the notice in respect of the acceptance of a preliminary design as contemplated in subsection (7) of section 8, and despite the provisions of any law or town planning scheme or for any law to the contrary –
 - (a) no application for the establishment of a township, for subdivision of land, for any change of land use in terms of any law or town planning scheme or from any authorisation contemplated in section 22 of the Environment conservation Act, 1989 (Act 73 of 1989) may be granted –
 - (i) in respect of an area within the road or rail reserve boundaries of the preliminary design, provided that the MEC may on written application by the applicant relax the provisions of this subsection in respect of an access road on such conditions as the MEC may deem fit, including –
 - (aa) a condition that the access road be substituted by another road or street serving the same function as the said access road;
 - (bb) a condition for amending the preliminary design requiring the applicant to pay all or any of the costs incurred by the MEC in the process, in which case section 38 applies;

- (ii) on the basis of future access to the provincial road to which the said preliminary design relates, except on the basis of access provided for in the said preliminary design, or amendment thereof on application in terms of subsection (9) of section 8 or otherwise.
 - (b) A building restriction area exists in respect of the road and rail reserve boundaries, as shown in the preliminary design and the provisions of section 46, 48 and 49 apply, with the necessary changes, in respect of the building restriction area, inasmuch as these sections are applicable to building restriction area, but with the exception of subsection (4) of section 46, subsection (5) of section 46, subsection (9) of section 46, subsection (7) of section 48, and subsection (8) of section 48, which do not apply.
 - (c) No application for a change in land use in respect of a portion of land adjacent to the road reserve boundary of a preliminary design in an urban area may be granted without the written comments of the MEC first having been obtained and considered in accordance with the applicable planning procedure by the authority empowered to grant changes in land use, which must duly consider such comments, and section 7 (6), a (7) and (8) applies in such a case, with the necessary changes.
- (2) After the publication of the notice contemplated in subsection (7) of section 8 and despite any law to the contrary, no service provider may after commencement of this Act, lay, construct, alter or add to any pipeline, electricity line or cable, telephone line or cable, or any other structure on, over or under the area within the road or rail reserve boundaries as shown in the preliminary design or may construct, alter or add to any structure or any nature whatsoever on, over or under such area, except –
 - (a) in terms of the written permission of the MEC first having been obtained and then only in terms of such conditions as the MEC may lay down; or
 - (b) in terms of an existing registered servitude.
- (3) This section ceases to apply on the proclamation in term of subsection (1) of section 11 of the provincial road or railway line in respect of which the preliminary design has been accepted by the MEC."

Reference: 2/1/7/8-Gautrain (prelim phase 2. section 2)

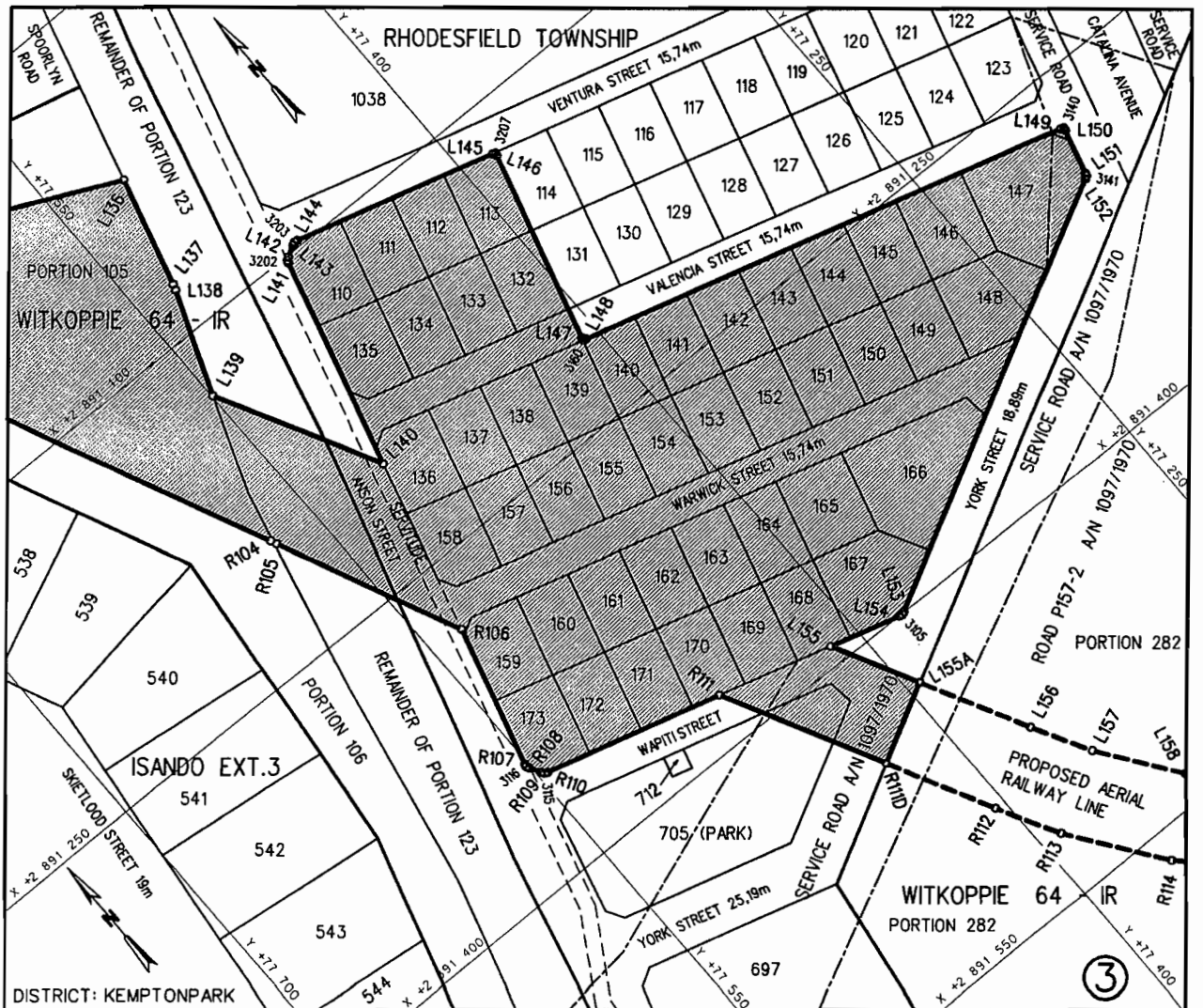
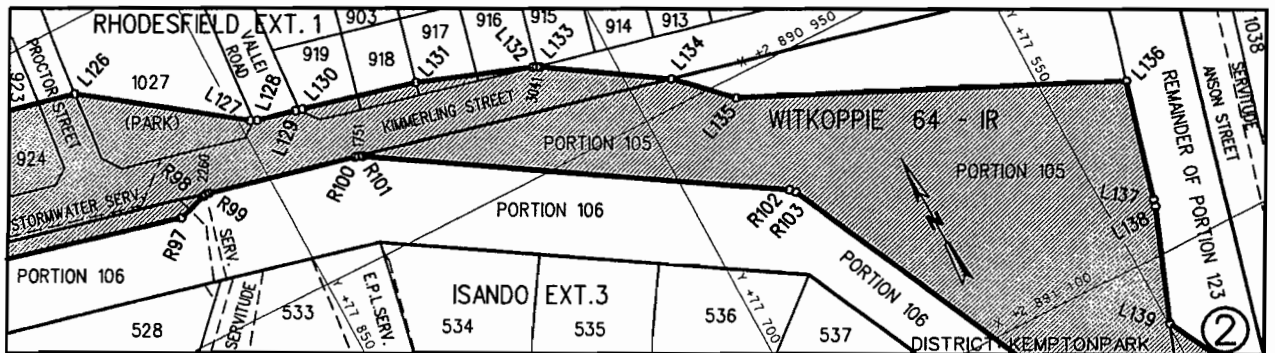
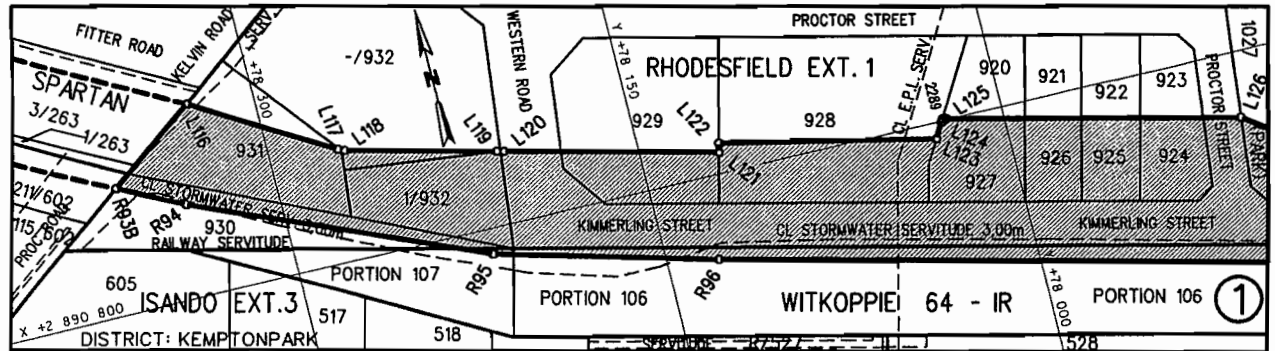
NOTICE 2347 OF 2009

PROCLAMATION OF A PROVINCIAL RAILWAY LINE IN CONNECTION WITH THE GAUTRAIN RAPID RAIL LINK BETWEEN PRETORIA, JOHANNESBURG AND THE O R TAMBO INTERNATIONAL AIRPORT : DISTRICT KEMPTON PARK

In terms of section 11(1)(b) of the Gauteng Transport Infrastructure Act, 2001 (Act No. 8 of 2001) the MEC hereby proclaims that a provincial railway line, with varying widths, exists on Erven 930, 931, the Remainder and Portion 1 of Erf 932, Erven 929 – 924, Erf 1027 (Park), Erven 919 – 916, portions of Western Road, Kimmerling Street, Proctor Street and Vallei Road in Rhodesfield Extension 1, Portions 107, 106, 105 and the Remainder of Portion 123 of the farm Witkoppie 64 IR, Erven 110 – 113, 132 – 173, 705 (Park) and portions of the streets Ason, Valencia, Warwick, Wapiti and York in Rhodesfield as indicated on the accompanying sketch plan.

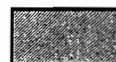
In terms of section 23(6) of the aforementioned act it is hereby declared that plan GRP03/38/18 Exp which indicates the said proclamation of the railway line on the land concerned, is available for inspection by any interested person at the office of the Department of Public Transport, Roads and Works, 41 Simmonds Street, Sage Life Building, Johannesburg during office hours.

Reference: 2/1/7/8 Gautrain



REFERENCE / VERWYSINGS

GEPROKLAAMEERDE SPOORLYN
PROCLAIMED RAILWAY LINE



DIE FIGUUR : L116 - L123, 2289, L124 - L141, 3202, L142, L143, 3203, L144, L145, 3207, L146, L147, 3160, L148,
THE FIGURE : L149, 3140, L150, L151, 3141, L152, L153, 3105, L154 - L155A, R111D - R110, 3115, R109, R108,
3116, R107 - R101, 1751, R100, R99, 2260, R98 - R94, R93B, L116.

VERTEENWOORDIG DIE PROKLAMASIE VAN DIE BETROKKE GEDEELTE VAN DIE SPOORLYN OOR ERWE 930, 931, DIE RESTANT EN GEDEELTE 1 VAN ERF 932, ERWE 929-924, ERF 1027 (PARK), ERWE 919-916, GEDEELTES VAN WESTERNWEG, KIMMERLINGSTRAAT, PROCTORSTRAAT EN VALLEIWEG IN RHODESFIELD UITBREIDING 1, GEDEELTES 107, 106, 105 EN DIE RESTANT VAN GEDEELTE 123 VAN DIE PLAAS WITKOPPIE 64-IR, ERWE 110-113, 132-173, 705 (PARK) EN GEDEELTES VAN DIE STRATE ANSON, VALENCIA, WARWICK, WAPITI EN YORK IN RHODESFIELD SOOS BEDOEL BY DIE AFKONDIGING DAARVAN IN DIE PROVINSIALE KOERANT EN IN DETAIL GETOON OP PLAN GRP 03/38/18Exp.

REPRESENTS THE PROCLAMATION OF THE PORTION CONCERNED OF THE RAILWAY LINE OVER ERVEN 930, 931, THE REMAINDER AND PORTION 1 OF ERF 932, ERVEN 929-924, ERF 1027 (PARK), ERVEN 919-916, PORTIONS OF WESTERN ROAD, KIMMERLING STREET, PROCTOR STREET AND VALLEI ROAD IN RHODESFIELD EXTENSION 1, PORTIONS 107, 106, 105 AND THE REMAINDER OF PORTION 123 OF THE FARM WITKOPPIE 64-IR, ERVEN 110-113, 132-173, 705 (PARK) AND PORTIONS OF THE STREETS ANSON, VALENCIA, WARWICK, WAPITI AND YORK IN RHODESFIELD AS INTENDED BY THE PUBLICATION THEREOF IN THE PROVINCIAL GAZETTE AND SHOWN IN DETAIL ON PLAN GRP 03/38/18Exp.

BUNDEL NR. / FILE 2/1/7/8-GAUTRAIN

KOÖRDINATE LYS/CO-ORDINATE LIST WG 29° KONST./CONST. Y= +/- 0.00 X= +2 800 000.00

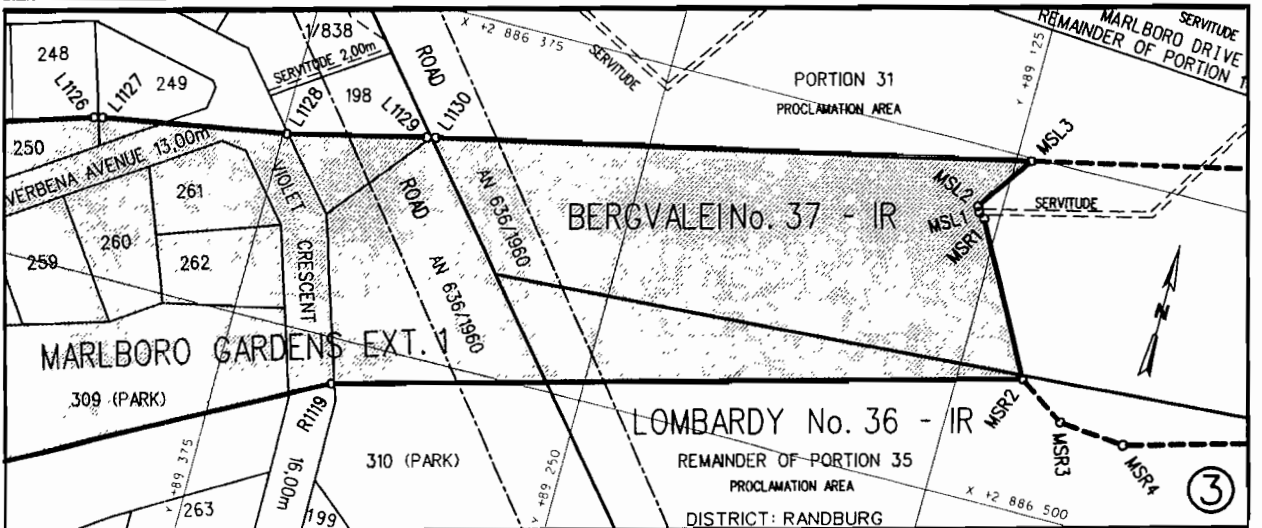
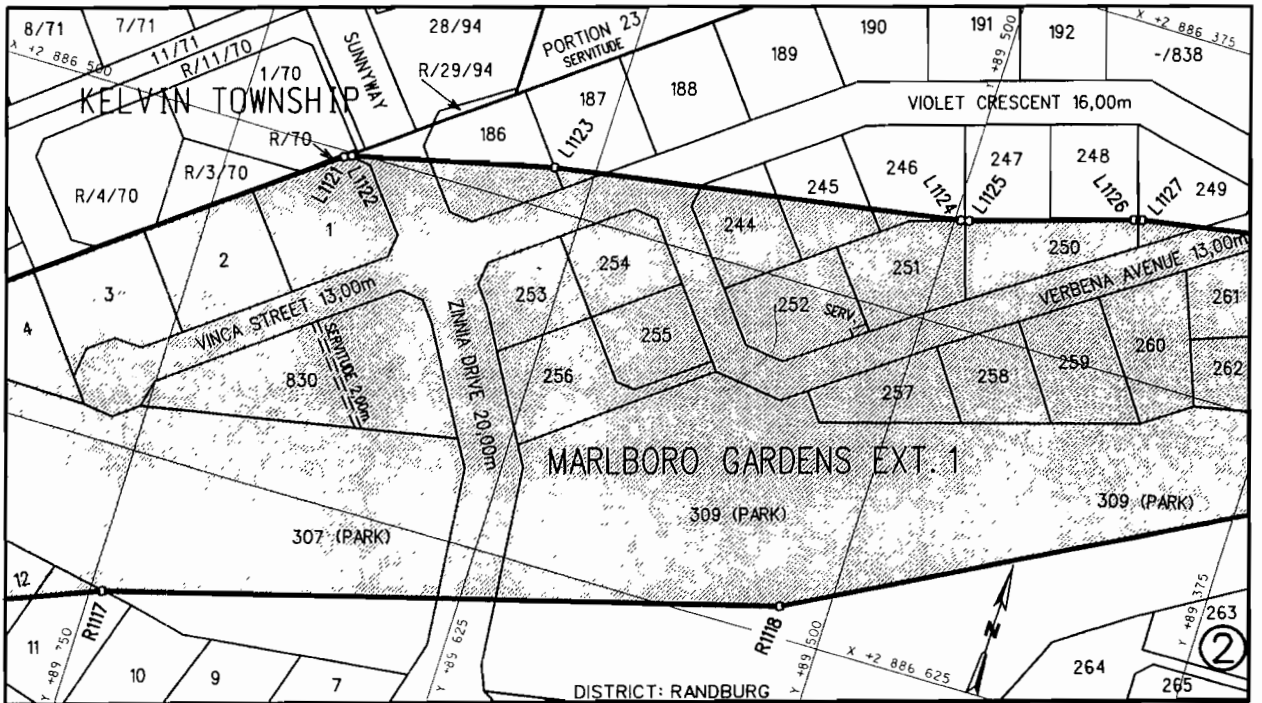
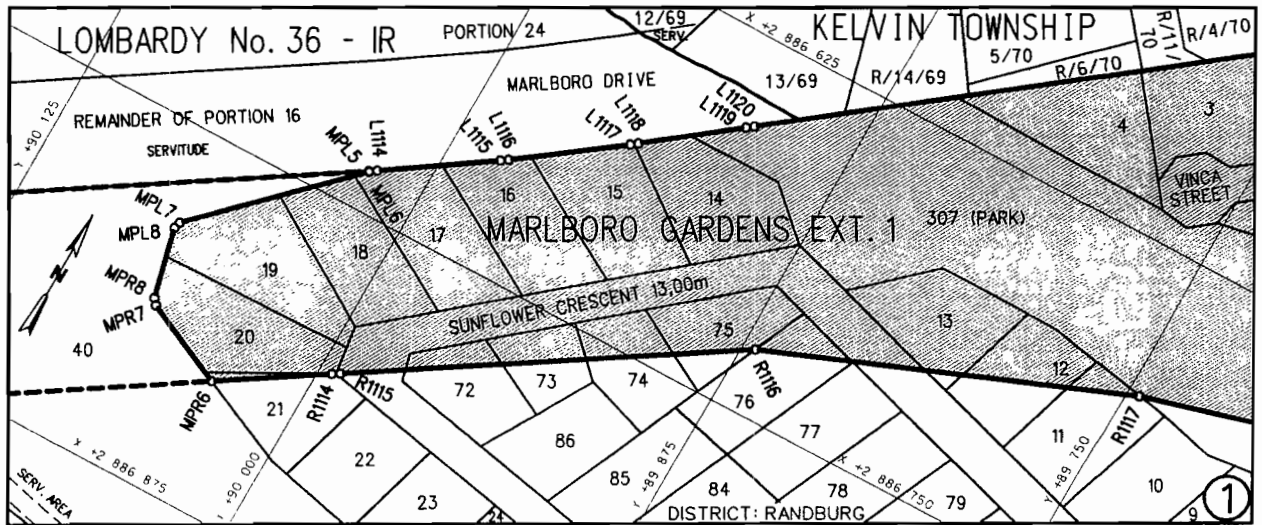
L116	+78327.798	+90717.245	L142	+77483.982	+91100.747	R103	+77659.237	+91005.819
L117	+78271.753	+90751.394	L143	+77478.864	+91097.802	R104	+77572.484	+91195.782
L118	+78269.019	+90752.544	L144	+77476.115	+91097.444	R105	+77571.238	+91198.511
L119	+78207.764	+90768.093	L145	+77384.769	+91122.061	R106	+77533.643	+91280.946
L120	+78204.856	+90768.830	L146	+77383.711	+91123.900	R107	+77551.254	+91346.293
L121	+78117.643	+90790.882	L147	+77407.509	+91212.204	R108	+77550.896	+91349.042
L122	+78116.701	+90786.995	L148	+77406.451	+91214.043	R109	+77547.951	+91354.160
L123	+78029.312	+90806.947	L149	+77185.251	+91273.657	R110	+77545.754	+91355.851
L124	+78025.613	+90800.479	L150	+77184.199	+91275.495	R111	+77465.019	+91377.609
L125	+78023.410	+90799.530	L151	+77189.859	+91296.180	R111D	+77428.809	+91448.494
L126	+77904.617	+90828.321	L152	+77191.573	+91298.342			
L127	+77845.486	+90872.548	L153	+77378.666	+91399.811	1751	+77813.180	+90906.950
L128	+77842.827	+90873.800	L154	+77381.432	+91400.136	2260	+77876.690	+90891.800
L129	+77827.154	+90877.599	L155	+77413.352	+91391.533	2289	+78024.870	+90799.180
L130	+77824.242	+90878.321	L155A	+77393.794	+91429.504	3041	+77729.810	+90907.590
L131	+77777.434	+90890.193				3105	+77379.980	+91400.530
L132	+77731.224	+90907.075	R93B	+78365.156	+90745.604	3115	+77547.200	+91355.460
L133	+77728.560	+90908.413	R94	+78338.550	+90759.502	3116	+77551.640	+91347.740
L134	+77682.407	+90938.672	R95	+78219.691	+90810.933	3140	+77183.800	+91274.050
L135	+77662.417	+90958.539	R96	+78128.548	+90835.881	3141	+77190.250	+91297.630
L136	+77517.210	+91027.235	R97	+77890.270	+90896.258	3160	+77407.900	+91213.650
L137	+77530.698	+91077.659	R98	+77878.118	+90892.266	3202	+77485.280	+91101.500
L138	+77531.612	+91080.513	R99	+77875.234	+90892.145	3203	+77477.560	+91097.050
L139	+77549.432	+91128.106	R100	+77814.639	+90906.602	3207	+77383.320	+91122.450
L140	+77511.888	+91200.219	R101	+77811.914	+90907.755			
L141	+77485.673	+91102.943	R102	+77661.126	+91003.650			

NOTICE 2348 OF 2009**PROCLAMATION OF A PROVINCIAL RAILWAY LINE IN CONNECTION WITH THE GAUTRAIN RAPID RAIL LINK BETWEEN PRETORIA, JOHANNESBURG AND THE O R TAMBO INTERNATIONAL AIRPORT : DISTRICT RANDBURG**

In terms of section 11(1)(b) of the Gauteng Transport Infrastructure Act, 2001 (Act No. 8 of 2001) the MEC hereby proclaims that a provincial railway line, with varying widths, exists on Erven 21 – 11, 76 – 72, 307 (Park), 309 (Park), 4 – 1, 186, 187, 830, 253 – 256, 244 – 246, 252 – 249, 257 – 262, 198, 310 (Park), portions of Sunflower Crescent, Vinea Street, Violet Crescent, Zinnia Drive and Verbenia Avenue in Marlboro Gardens Extension 1, the Remainder of Portion 35 of the farm Lombardy 36 IR and Portion 31 of the farm Bergvalei 37 IR as indicated on the accompanying sketch plans.

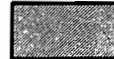
In terms of section 23(6) of the aforementioned act it is hereby declared that plan GRP03/38/09 EXP which indicates the said proclamation on the land concerned, is available for inspection by any interested person at the office of the Department of Public Transport, Roads and Works, 41 Simmonds Street, Sage Life Building, Johannesburg.

Reference: 2/1/7/8 Gautrain



REFERENCE / VERWYSINGS

GEPROKLAAMEERDE SPOORLYN
PROCLAIMED RAILWAY LINE



DIE FIGUUR : MPL8 - MPL5, L1114 - L1130, MSL3 - MSL1, MSR1, MSR2, R1119 - R1114, MPR6 - MPR8, MPL8.
THE FIGURE :

VERTEENWOORDIG DIE PROKLAMASIE VAN DIE BETROKKE GEDEELTE VAN DIE SPOORLYN OOR ERWE 21-11, 76-72, 307(PARK), 309(PARK), 4-1, 186, 187, 830, 253-256, 244-246, 252-249, 257-262, 198, 310(PARK), GEDEELTES VAN SUNFLOWER CRESCENT, VINCASTRAAT, VIOLET CRESCENT, ZINNIAWEG EN VERBENALAAN IN MARLBORO GARDENS UITBREIDING 1, DIE RESTANT VAN GEDEELTE 35 VAN DIE PLAAS LOMBARDY 36-IR, GEDEELTE 31 VAN DIE PLAAS BERGVALEI 37-IR SOOS BE-DOEL BY DIE AFKONDIGING DAARVAN IN DIE PROVINSIALE KOERANT EN IN DETAIL GETOON OP PLAN GRP 03/38/09Exp.

REPRESENTS THE PROCLAMATION OF THE PORTION CONCERNED OF THE RAILWAY LINE OVER ERVEN 21-11, 76-72, 307(PARK), 309(PARK), 4-1, 186, 187, 830, 253-256, 244-246, 252-249, 257-262, 198, 310(PARK), PORTIONS OF SUNFLOWER CRESCENT, VINCA STREET, VIOLET CRESCENT, ZINNIA DRIVE AND VERBENA AVENUE IN MARLBORO GARDENS EXTENSION 1, THE REMAINDER OF PORTION 35 OF THE FARM LOMBARDY 36-IR, PORTION 31 OF THE FARM BERGVALEI 37-IR AS INTENDED BY THE PUBLICATION THEREOF IN THE PROVINCIAL GAZETTE AND SHOWN IN DETAIL ON PLAN GRP 03/38/09Exp.

BUNDEL NR. / FILE NO. 2/1/7/8-GAUTRAIN

KOÖRDINATE LYS/CO-ORDINATE LIST WG 29° KONST./CONST. Y= +/- 0.00 X= +2 800 000.00

L1114 +90017.683 +86734.026
L1115 +89981.977 +86710.134
L1116 +89979.522 +86708.410
L1117 +89944.978 +86682.970
L1118 +89942.582 +86681.164
L1119 +89912.488 +86657.966
L1120 +89910.112 +86656.134
L1121 +89710.710 +86502.439
L1122 +89708.063 +86501.176
L1123 +89639.109 +86484.760
L1124 +89498.016 +86462.185
L1125 +89495.102 +86461.504
L1126 +89440.654 +86444.634
L1127 +89437.743 +86443.939

L1128 +89373.580 +86433.067
L1129 +89325.975 +86421.954
L1130 +89323.050 +86421.288
R1114 +89995.496 +86806.015
R1115 +89992.964 +86804.406
R1116 +89870.436 +86726.558
R1117 +89745.758 +86677.083
R1118 +89516.853 +86613.878
R1119 +89335.323 +86516.210
MPL5 +90020.196 +86735.665
MPL6 +90020.000 +86735.912
MPL7 +90069.006 +86784.083

MPL8 +90069.721 +86786.592
MPR6 +90030.940 +86828.570
MPR7 +90061.776 +86814.272
MPR8 +90063.491 +86812.184
MSL1 +89132.530 +86398.615
MSL2 +89133.402 +86396.749
MSL3 +89119.756 +86376.137
MSR1 +89130.132 +86400.558
MSR2 +89102.467 +86453.222
MSR3 +89085.499 +86464.994
MSR4 +89062.515 +86467.320

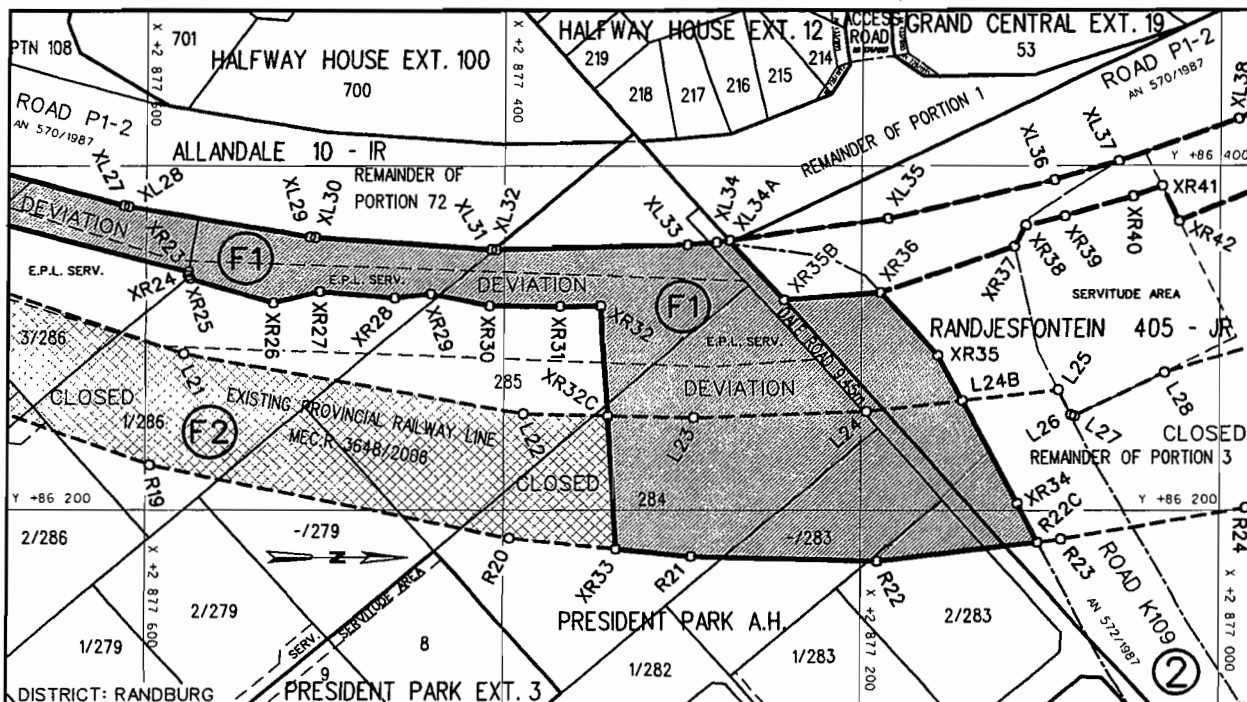
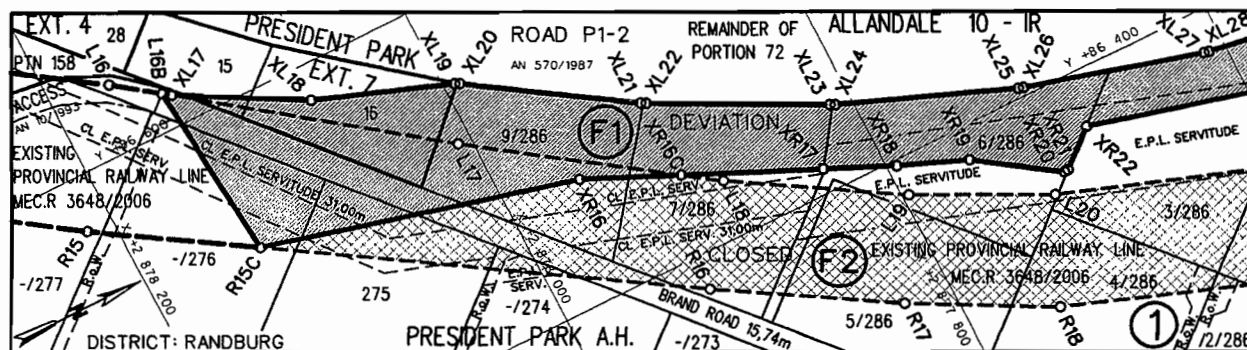
NOTICE 2349 OF 2009

PROCLAMATION OF THE DEVIATION AND CLOSING OF PORTIONS OF THE PROVINCIAL RAILWAY LINE IN CONNECTION WITH THE GAUTRAIN RAPID RAIL LINK BETWEEN PRETORIA, JOHANNESBURG AND THE O R TAMBO INTERNATIONAL AIRPORT : DISTRICT RANDBURG

In terms of section 11(1)(d) of the Gauteng Transport Infrastructure Act, 2001 (Act No. 8 of 2001) the MEC hereby proclaims the deviation of portions of the provincial railway line and the resultant closure of portions thereof over Erven 15 and 16 in President Park Extension 7, the Remainders of Holdings 276, 274, 279, 283, Holdings 275, 284, 285, Portions 1-7, 9 of Holding 286, Portion 2 of Holding 283, portions of Brand Road and Dale Road in President Park Agricultural Holdings and the Remainder of Portion 3 of the farm Randjesfontein 405-JR, district Randburg as indicated on the accompanying sketch plans.

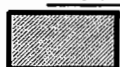
In terms of section 23(6) of the aforementioned act it is hereby declared that plans GRP03/38/23 EXP – 24 EXP – 24A EXP which indicate the said deviation and closure of the railway line on the land concerned, are available for inspection by any interested person at the office of the Department of Public Transport, Roads and Works, 41 Simmonds Street, Sage Life Building, Johannesburg.

Reference : 2/1/7/8 Gautrain



REFERENCE / VERWYSINGS

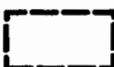
SPOORLYN VERLÊ
RAILWAY LINE DEVIATED



SPOORLYN GESLUIT
RAILWAY LINE CLOSED



BESTAANDE SPOORLYN
EXISTING RAILWAY LINE



DIE FIGURE : (1) L16B, XL17 - XL34, XL34A, XL35B, XR35, XR34, R22C, R22, R21, XR33 - XR16, R15C, L16B.
THE FIGURES : (2) R15C, XR16, XR16C, L18 - L22, XR32C, XR33, R20 - R16, R15C.

VERTEENWOORDIG DIE PROKLAMASIE VAN DIE VERLEGGING VAN DIE BETROKKE GEDEELTES VAN DIE SPOORLYN EN GEVOLGLIKE SLUITING VAN GEDEELTES DAARVAN OOR ERWE 15 EN 16 IN PRESIDENT PARK UITBREIDING 7, DIE RESTANTE VAN HOEWES 276, 274, 279, 283, HOEWES 275, 284, 285, GEDEELTES 1 - 7, 9 VAN HOEWE 286, GEDEELTE 2 VAN HOEWE 283, BRAND ROAD EN DALE ROAD IN PRESIDENT PARK LANDBOUHOEWES EN DIE RESTANT VAN GEDEELTE 3 VAN DIE PLAAS RANDJESFONTEIN 405-JR SOOS BEDOEL BY DIE AFKONDIGING DAARVAN IN DIE PROVINSIALE KOERANT EN IN DETAIL GETOON OP PLANNE GRP 03/38/23Exp-24Exp-24AExp.

REPRESENT THE PROCLAMATION OF THE DEVIATION OF THE PORTIONS CONCERNED OF THE RAILWAY LINE AND RESULTANT CLOSURE OF PORTIONS THEREOF OVER ERVEN 15 AND 16 IN PRESIDENT PARK EXTENSION 7, THE REMAINDERS OF HOLDINGS 276, 274, 279, 283, HOLDINGS 275, 284, 285, PORTIONS 1 - 7, 9 OF HOLDING 286, PORTION 2 OF HOLDING 283, BRAND ROAD AND DALE ROAD IN PRESIDENT PARK AGRICULTURAL HOLDINGS AND THE REMAINDER OF PORTION 3 OF THE FARM RANDJESFONTEIN 405-JR AS INTENDED BY THE PUBLICATION THEREOF IN THE PROVINCIAL GAZETTE AND SHOWN IN DETAIL ON PLANS GRP 03/38/23Exp-24Exp-24AExp.

BUNDEL NR. / FILE NO. 211/78-GAUTRAIN

KÖÖRDINATE LYS/CO-ORDINATE LIST WG 29° KONST./CONST. Y= +/- 0.00 X= +2 800 000.00								
L16B	+86621.007	+78141.942	XL18	+86579.505	+78069.345	XR18	+86396.709	+77794.539
L17	+86519.816	+78007.982	XL19	+86551.682	+77993.791	XR19	+86381.073	+77756.873
L18	+86432.760	+77884.150	XL20	+86550.321	+77991.095	XR20	+86350.681	+77712.504
L19	+86378.694	+77796.428	XL21	+86493.810	+77905.555	XR21	+86350.818	+77710.135
L20	+86341.433	+77722.993	XL22	+86492.290	+77902.975	XR22	+86368.353	+77689.969
L21	+86289.828	+77578.508	XL23	+86444.829	+77812.065	XR23	+86337.996	+77576.445
L22	+86255.245	+77389.010	XL24	+86443.588	+77809.345	XR24	+86335.785	+77576.622
L23	+86253.061	+77293.047	XL25	+86405.667	+77714.045	XR25	+86333.870	+77575.440
L24	+86256.695	+77197.198	XL26	+86404.707	+77711.215	XR26	+86319.723	+77528.907
L24B	+86262.917	+77143.454	XL27	+86376.736	+77612.535	XR27	+86326.282	+77503.009
			XL28	+86376.066	+77609.615	XR28	+86322.506	+77461.447
R15C	+86516.592	+78133.175	XL29	+86358.335	+77508.614	XR29	+86324.844	+77441.199
R16	+86379.835	+77919.670	XL30	+86357.965	+77505.634	XR30	+86318.013	+77408.285
R17	+86323.221	+77827.330	XL31	+86350.935	+77407.264	XR31	+86317.694	+77368.529
R18	+86281.556	+77750.516	XL32	+86350.865	+77404.264	XR32	+86317.815	+77345.829
R19	+86225.846	+77597.353	XL33	+86353.794	+77296.703	XR32C	+86254.203	+77341.641
R20	+86183.539	+77396.536	XL34	+86355.243	+77280.643	XR33	+86177.348	+77336.575
R21	+86172.968	+77294.153	XL34A	+86356.251	+77273.260	XR34	+86204.001	+77112.413
R22	+86170.253	+77190.519				XR35	+86289.012	+77157.203
R22C	+86181.486	+77100.762	XR16	+86470.589	+77956.163	XR35B	+86321.429	+77242.917
			XR16C	+86446.634	+77903.885	XR36	+86325.808	+77189.296
XL17	+86617.605	+78137.411	XR17	+86413.643	+77831.888			