

*THE PROVINCE OF
GAUTENG*

*DIE PROVINSIE
GAUTENG*

**Provincial Gazette Extraordinary
Buitengewone Provinsiale Koerant**

Vol. 15

**PRETORIA, 21 AUGUST
AUGUSTUS 2009**

No. 193

CONTENTS • INHOUD

<i>No.</i>		<i>Page No.</i>	<i>Gazette No.</i>
GENERAL NOTICES			
2712	Gauteng Transport Infrastructure Act (8/2001): Proclamation of a provincial railway line in connection with the Gautrain Rapid Rail Link between Pretoria, Johannesburg and the O R Tambo International Airport: District Randburg	3	193
2713	do.: do.: District Kempton Park	5	193
2714	do.: Proclamation of access roads in connection with the Gautrain Rapid Rail Link between Pretoria, Johannesburg and the O R Tambo International Airport: District Pretoria	7	193

GENERAL NOTICES

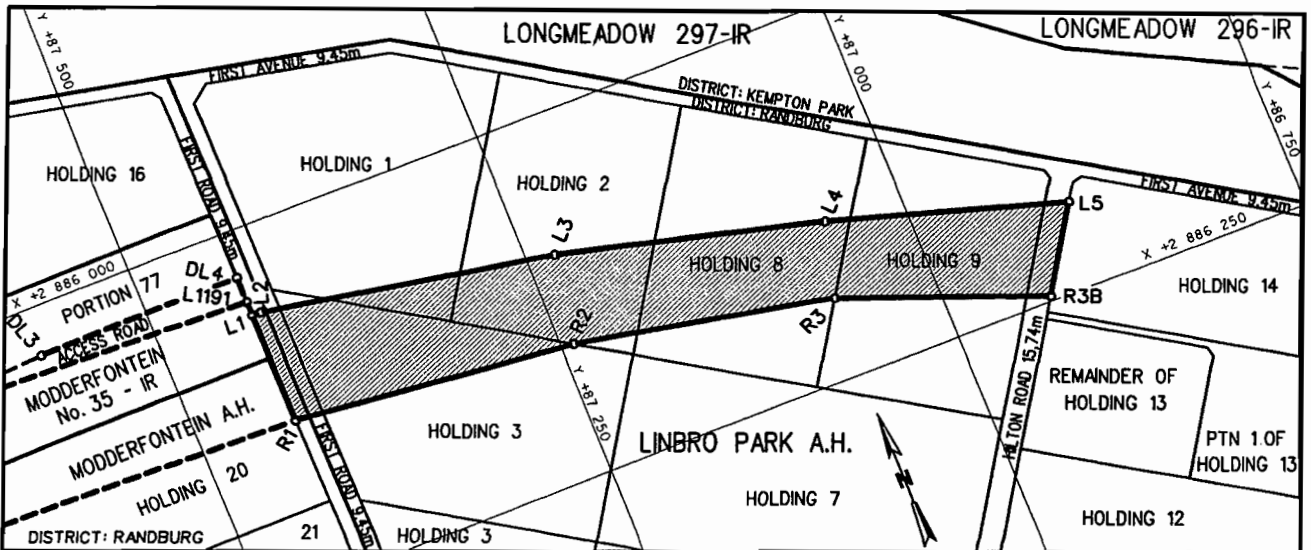
NOTICE 2712 OF 2009

PROCLAMATION OF A PROVINCIAL RAILWAY LINE IN CONNECTION WITH THE GAUTRAIN RAPID RAIL LINK BETWEEN PRETORIA, JOHANNESBURG AND THE O R TAMBO INTERNATIONAL AIRPORT: DISTRICT RANDBURG

In terms of section 11 (1)(b) of the Gauteng Transport Infrastructure Act, 2001 (Act No. 8 of 2001) the MEC hereby proclaims that a provincial railway line, with varying widths, exists on a portion of First Road in Modderfontein Agricultural Holdings, Holdings 1 – 3, 8, 9 and portions of First and Hilton Roads in Limbro Park Agricultural Holdings, district Randburg as indicated on the accompanying sketch plan.

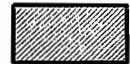
In terms of section 23 (6) of the aforementioned act it is hereby declared that plan GRP03/38/10 Exp which indicates the said proclamation of the railway line on the land concerned in detail, is available for inspection by any interested person at the office of the Department of Roads and Transport, 41 Simmonds Street, Sage Life Building, Johannesburg during office hours.

Reference: 2/1/7/8 Gautrain



REFERENCE / VERWYSINGS

GEPROKLAMEERDE SPOORLYN
PROCLAIMED RAILWAY LINE



DIE FIGUUR : L1 - L5, R3B, R3, R2, R1, L1.
THE FIGURE :

VERTEENWOORDIG DIE PROKLAMASIE VAN DIE BETROKKE GEDEELTE VAN DIE SPOORLYN OOR 'N GEDEELTE VAN FIRST ROAD IN MODDERFONTEIN LANDBOUHOEWES, HOEWES 1 - 3, 8, 9 EN GEDEELTES VAN FIRST EN HILTON ROAD IN LINBRO PARK LANDBOUHOEWES SOOS BEDOEL BY DIE AFKONDIGING DAARVAN IN DIE PROVINSIALE KOERANT EN IN DETAIL GETOON OP PLAN GRP 03/38/10Exp.

REPRESENTS THE PROCLAMATION OF THE PORTION CONCERNED OF THE RAILWAY LINE OVER A PORTION OF FIRST ROAD IN MODDERFONTEIN AGRICULTURAL HOLDINGS, HOLDINGS 1 - 3, 8, 9 AND PORTIONS OF FIRST AND HILTON ROAD IN LINBRO PARK AGRICULTURAL HOLDINGS AS INTENDED BY THE BUBLICATION THEREOF IN THE PROVINCIAL GAZETTE AND SHOWN IN DETAIL ON PLAN GRP 03/38/10Exp.

BUNDEL NR. / FILE NO. 2/1/7/8-GAUTRAIN

KOÖRDINATE LYS/CO-ORDINATE LIST WG 29° KONST./CONST. Y= +/- 0.00 X= +2 800 000.00

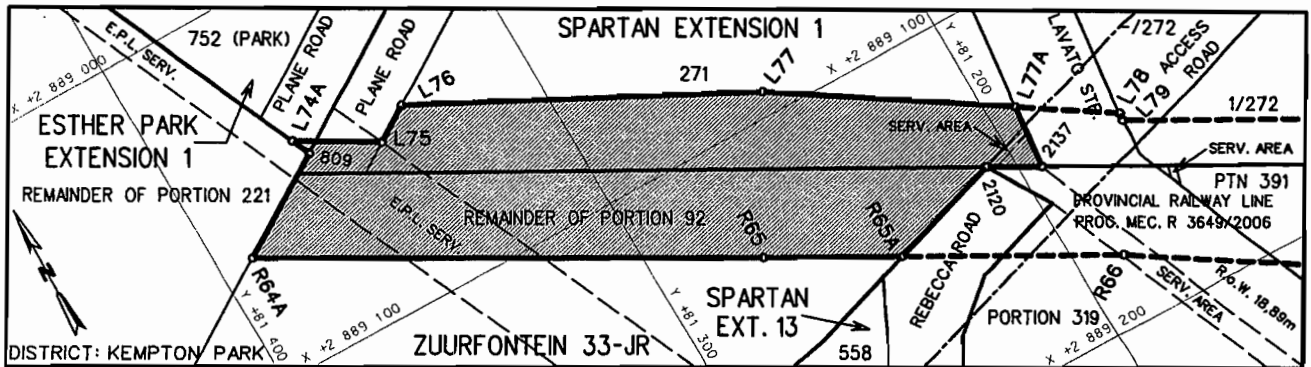
L1	+87434.589	+86060.400	L4	+87052.558	+86142.167	R2	+87241.300	+86158.546
L2	+87428.835	+86060.608	L5	+86896.354	+86189.872	R3	+87066.685	+86194.291
L3	+87230.664	+86096.113	R1	+87434.004	+86138.837	R3B	+86932.021	+86246.495

NOTICE 2713 OF 2009**PROCLAMATION OF A PROVINCIAL RAILWAY LINE IN CONNECTION WITH THE GAUTRAIN RAPID RAIL LINK BETWEEN PRETORIA, JOHANNESBURG AND THE O R TAMBO INTERNATIONAL AIRPORT: DISTRICT KEMPTON PARK**

In terms of section 11 (1)(b) of the Gauteng Transport Infrastructure Act, 2001 (Act No. 8 of 2001) the MEC hereby proclaims that a provincial railway line, with varying widths, exists on the Remainder of Portion 92 of the farm Zuurfontein 33-JR, a portion of Plane Road in Esther Park Extension 1, Erf 271 and a portion of Plane Road in Spartan Extension 1, district Kempton Park as indicated on the accompanying sketch plan.

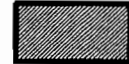
In terms of section 23 (6) of the aforementioned act it is hereby declared that plan GRP03/38/15 Exp which indicates the said proclamation of the railway line on the land concerned in detail, is available for inspection by any interested person at the office of the Department of Roads and Transport, 41 Simmonds Street, Sage Life Building, Johannesburg during office hours.

Reference: 2/1/7/8 Gautrain



REFERENCE / VERWYSINGS

GEPROKLAAMEERDE SPOORLYN
PROCLAIMED RAILWAY LINE



DIE FIGUUR : L74A, L75 - L77, L77A, 2137, 2120, R65A, R65, R64A, 809, L74A.
THE FIGURE : L74A, L75 - L77, L77A, 2137, 2120, R65A, R65, R64A, 809, L74A.

VERTEENWOORDIG DIE PROKLAMASIE VAN DIE BETROKKE GEDEELTE VAN DIE SPOORLYN OOR DIE RESTANT VAN GEDEELTE 92 VAN DIE PLAAS ZUURFONTEIN 33-JR, 'N GEDEELTE VAN PLANE ROAD IN ESTHER PARK UITBREIDING 1, ERF 271 EN 'N GEDEELTE VAN PLANE ROAD IN SPARTAN UITBREIDING 1 SOOS BEDOEL BY DIE AFKONDIGING DAARVAN IN DIE PROVINSIALE KOERANT EN IN DETAIL GETOON OP PLAN GRP 03/38/15Exp.

REPRESENTS THE PROCLAMATION OF THE PORTION CONCERNED OF THE RAILWAY LINE OVER THE REMAINDER OF PORTION 92 OF THE FARM ZUURFONTEIN 33-JR, A PORTION OF PLANE ROAD IN ESTHER PARK EXTENSION 1, ERF 271 AND A PORTION OF PLANE ROAD IN SPARTAN EXTENSION 1 AS INTENDED BY THE PUBLICATION THEREOF IN THE PROVINCIAL GAZETTE AND SHOWN IN DETAIL ON PLAN GRP 03/38/15Exp.

BUNDEL NR. / FILE NO. 2/1/7/8-GAUTRAIN

KOÖRDINATE LYS/CO-ORDINATE LIST WG 29° KONST./CONST. Y= +/- 0.00 X= +2 800 000.00

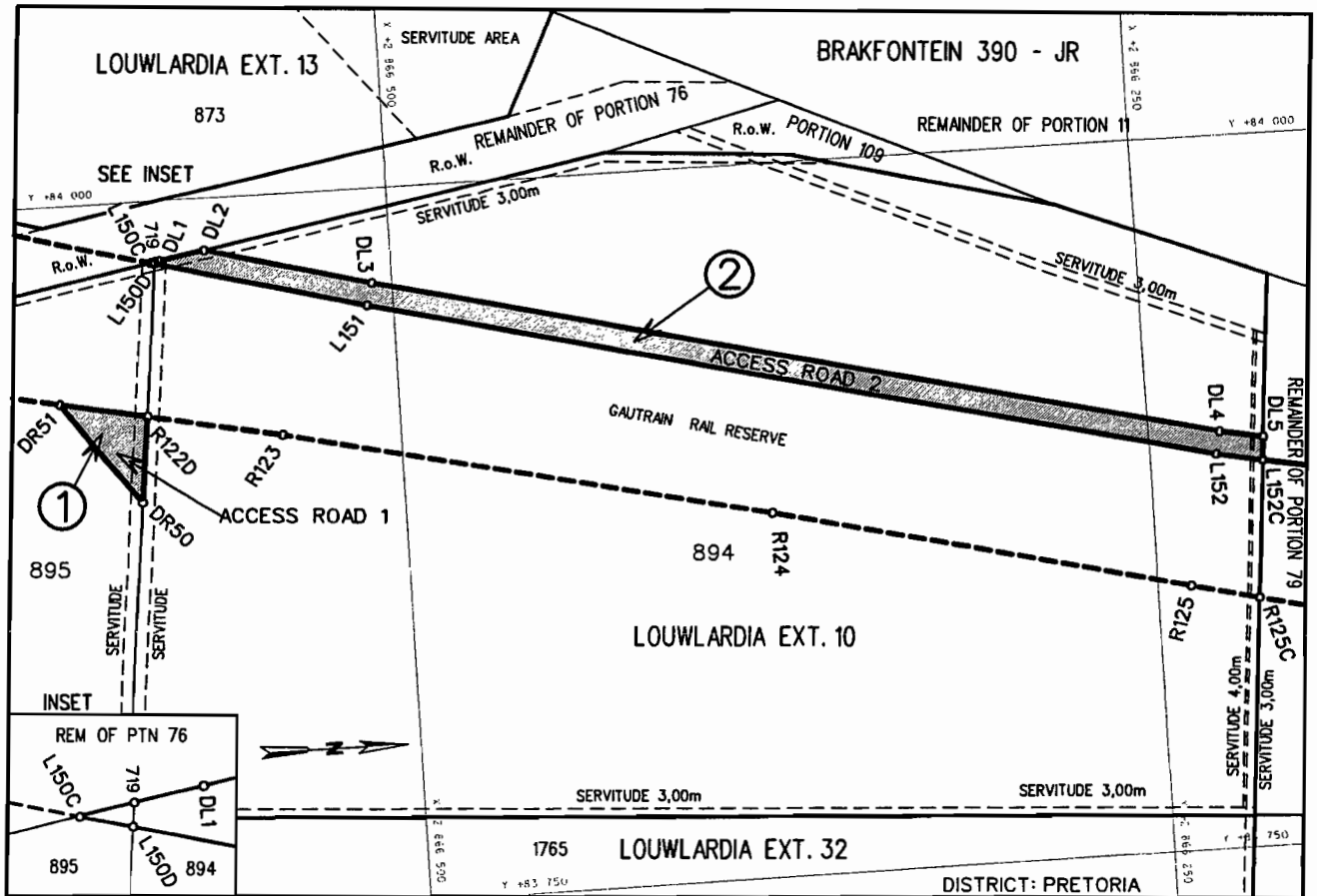
L74	+81376.980	+89035.484	L77	+81249.114	+89093.192	R65A	+81239.262	+89151.959
L74A	+81365.265	+89042.406	L77A	+81192.279	+89130.651	809	+81363.048	+89047.525
L74B	+81359.983	+89045.526				2120	+81207.369	+89141.356
L75	+81344.673	+89054.573	R64A	+81390.584	+89065.415	2137	+81194.350	+89148.667
L76	+81334.982	+89048.249	R65	+81271.852	+89133.639			

NOTICE 2714 OF 2009**PROCLAMATION OF ACCESS ROADS IN CONNECTION WITH THE GAUTRAIN
RAPID RAIL LINK BETWEEN PRETORIA, JOHANNESBURG AND THE O R TAMBO
INTERNATIONAL AIRPORT: DISTRICT PRETORIA**

In terms of section 13(1) of the Gauteng Transport Infrastructure Act, 2001 (Act No. 8 of 2001) the MEC hereby proclaims that access roads exists on Erven 894 and 895 in Louwlandia Extension 10, district Pretoria as indicated on the accompanying sketch plan.

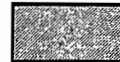
In terms of section 23(6) of the aforementioned act it is hereby stated that plan GRP03/38/29 Exp which indicates the land encroached upon by the access roads in detail, is available for inspection at the office of the Department of Roads and Transport, First Floor, South Tower, Sage Life Building, Simmonds Street 41, Johannesburg during office hours.

Reference: 2/1/7/8 Gautrain



REFERENCE / VERWYSINGS

GEPROKLAAMEERDE TOEGANGSPAARIE
PROCLAIMED ACCESS ROADS



DIE FIGURE : (1) DR50, DR51, R122D.
THE FIGURES : (2) L150C, DL1 - DL5, L152C, L152, L151, L150C.

VERTEENWOORDIG DIE PROKLAMASIE VAN DIE TOEGANGSPAARIE OOR ERWE 894 EN 895 IN LOUWLARDIA UITBREIDING 10 SOOS BEDOEL BY DIE AFKONDIGING DAARVAN IN DIE PROVINSIALE KOERANT EN IN DETAIL GETOON OP PLAN GRP 03/38/29Exp.

REPRESENT THE PROCLAMATION OF THE ACCESS ROADS OVER ERVEN 894 AND 895 IN LOUWLARDIA EXTENSION 10 AS INTENDED BY THE PUBLICATION THEREOF IN THE PROVINCIAL GAZETTE AND SHOWN IN DETAIL ON PLAN GRP 03/38/29Exp.

BUNDEL NR. / FILE NO. 2/1/7/8-GAUTRAIN

KOÖRDINATE LYS/CO-ORDINATE LIST WG 29° KONST./CONST. Y= +/- 0.00 X= +2 800 000.00

DL1	+83979.023	+66577.375	DR50	+83895.397	+66587.532	L150C	+83978.523	+66580.009
DL2	+83981.887	+66561.883	DR51	+83931.299	+66613.802	L150D	+83978.223	+66578.904
DL3	+83966.877	+66506.661				L151	+83959.136	+66508.682
DL4	+83896.574	+66225.903	719	+83978.740	+66578.850	L152	+83888.764	+66227.647
DL5	+83893.683	+66211.188				L152C	+83885.661	+66211.855
						R122D	+83925.288	+66584.426