

*THE PROVINCE OF
GAUTENG*

*DIE PROVINSIE
GAUTENG*

**Provincial Gazette Extraordinary
Buitengewone Provinsiale Koerant**

Vol. 15

PRETORIA, 13 OCTOBER
OKTOBER 2009

No. 227

CONTENTS • INHOUD

<i>No.</i>		<i>Page No.</i>	<i>Gazette No.</i>
GENERAL NOTICES			
1665	Gauteng Transport Infrastructure Act (8/2001): Proposed closure of an access road to Provincial Road K73 over Portions 5, 6 and 10 of the farm Bothasfontein 408 JR, known as Barbeque Extension 39	3	227
1666	do.: Proclamation of access roads in connection with Provincial Road K29: District of Krugersdorp.....	5	227
1667	do.: Closure of access roads in connection with Provincial Road K29: District of Krugersdorp	8	227
1668	do.: Proposed expropriation of a tunnel servitude in respect of the Gautrain Rapid Rail Link Project between Park Station (Johannesburg) and Sandton Station.....	11	227

GENERAL NOTICES

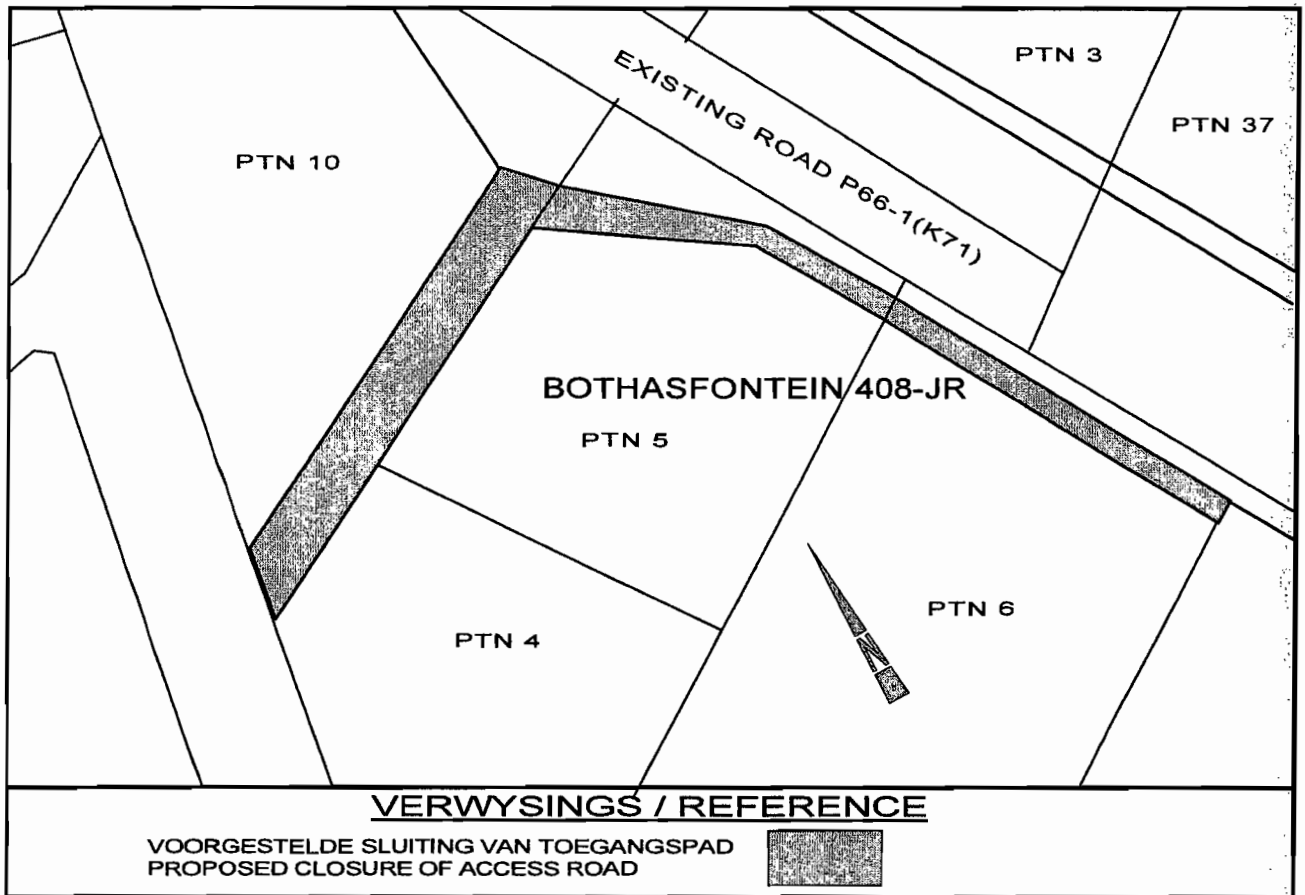
NOTICE 1665 OF 2009

PROPOSED CLOSING OF A ACCESS ROAD TO PROVINCIAL ROAD K73 OVER PORTIONS 5, 6 AND 10 OF THE FARM BOTHASFONTEIN 408 JR, KNOWN AS BARBEQUE EXTENSION 39

An application in terms of section 38 (1) of the Gauteng Transport Infrastructure Act, 2001 (Act No. 8 of 2001) has been received from Attwell Malherbe Associates, Town and Regional Planners, for the closing of an access road to provincial road K73 over Portions 5, 6 and 10 of the farm Bothasfontein 408 JR as indicated on the accompanying sketch plan.

In terms of the section 31 (2) of the aforementioned Act interested parties are requested to lodge comments or objections in writing, to the Head: Department of Roads and Transport, Director: Design, Private Bag X83, Marshalltown 2107, within 30 (thirty) days after the date of this notice.

Reference: 2/1/1/2/3/1 – K73



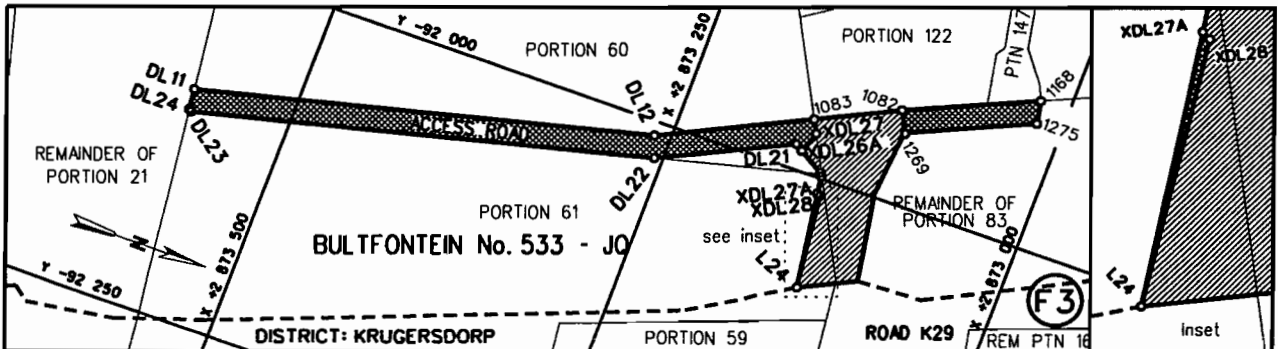
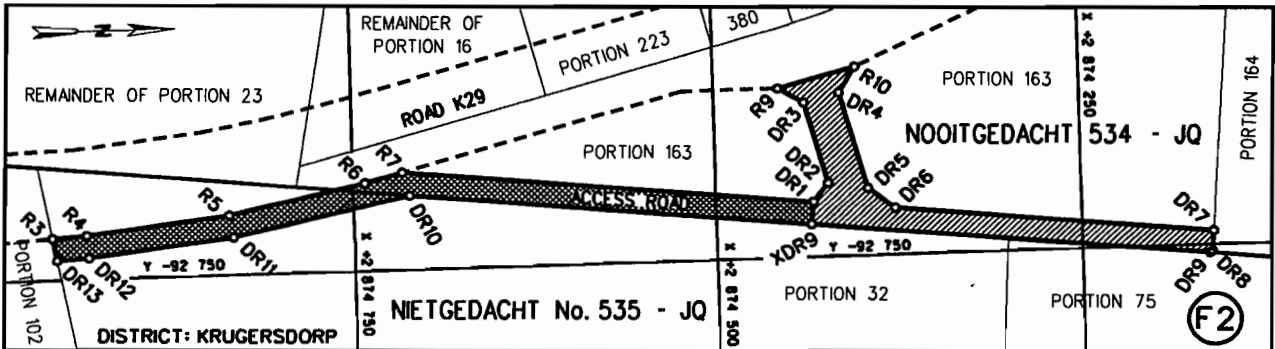
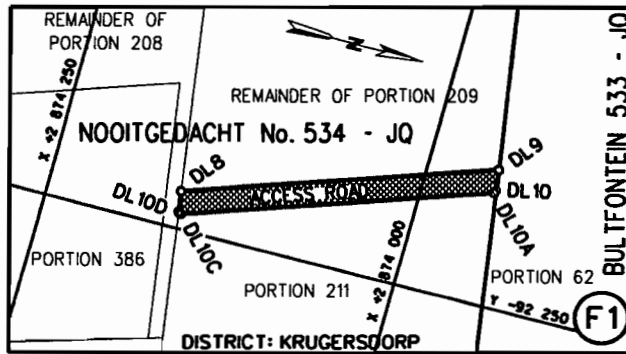
NOTICE 1666 OF 2009**PROCLAMATION OF ACCESS ROADS IN CONNECTION WITH PROVINCIAL ROAD
K29: DISTRICT KRUGERSDORP**

In terms of section 13(2) of the Gauteng Transport Infrastructure Act, 2001 (Act No 8 of 2001) the MEC hereby declares that access roads exist on Portion 211 and the Remainder of Portion 208 of the farm Nooitgedacht 534 JQ, Portions 60 and 61 of the farm Bultfontein 533 JQ, Portion 46 and the Remainder of Portion 95 of the farm Lindley 528 JQ, district Krugersdorp as indicated on the accompanying sketch plans.

In terms of section 23(6) of the abovementioned act it is hereby declared that boundary beacons demarcating the land encroached upon by the declaration of the access roads, have been erected on the land and that plans GRP 97/49/1 Exp – 4 Exp which indicate the said encroachment of the land, are available for inspection by any interested person at the office of the Department of Roads and Transport, 41 Simmonds Street, Sage Life Building, Johannesburg during office hours.

MEC Resolution 012 dated 26 January 2009

Reference: 2/1/1/2/3/1-K29



REFERENCE / VERWYSINGS

TOEGANGSPAARIE GESLUIT
ACCESS ROADS CLOSED



BESTAANDE TOEGANGSPAARIE
EXISTING ACCESS ROADS



- DIE FIGURE : 1: DL8 - DL10, DL10A, DL10C, DL10D, DL8.
 THE FIGURES : 2: R3 -R7, DR1, XDR9, DR10 -DR13, R3 .
 3: DL11, DL12, 1083, XDL27, XDL26A, DL21 - DL24, DL11.
 4: 1082, 1168, 1275, 1269, 1082.
 5: L24, XDL27A, XDL28, L24.

VERTEENWOORDIG DIE SLUITING VAN DIE TOEGANGSPAARIE OOR DIE RESTANTE VAN GEDEELTE 207 EN GEDEELTE 163 VAN DIE PLAAS NOOITGEDACHT 534-JQ, GEDEELTES 60 EN 61, EN DIE RESTANT VAN GEDEELTE 83 VAN DIE PLAAS BULTFONTEIN 533-JQ EN GEDEELTE 32 PLAAS NIETGEDACHT 535-JQ SOOS BEDOEL BY DIE AFKONDIGING DAARVAN IN DIE PROVINSIALE KOERANT EN IN DETAIL GETOON OP PLANNE GRP 07/49/1Exp-2Exp.

REPRESENT THE CLOSURE OF ACCESS ROADS OVER THE REMAINDERS OF PORTION 207 AND PORTION 163 OF THE FARM NOOITGEDACHT 534-JQ, PORTIONS 60 AND 61 AND REMAINDER OF PORTION 83 OF THE FARM BULTFONTEIN 533-JQ AND PORTION 32 OF FARM NIETGEDACHT 535-JQ AS INTENDED BY THE PUBLICATION THEREOF IN THE PROVINCIAL GAZETTE AND SHOWN IN DETAIL ON PLANS GRP 07/49/1Exp-2Exp.

BUNDEL NR. / FILE NO. 2/1/1/2/3/1-K29(4)

KOÖRDINATE LYS/CO-ORDINATE LIST WG 27° KONST./CONST. Y= +/- 0.00 X= +2 800 000.00								
L24	-92078.270	+73131.530	DL11	-92087.760	+73570.150	XDL26A	-91985.678	+73162.030
R3	-92720.090	+74957.040	DL12	-92010.000	+73261.340	XDL27	-91970.733	+73157.243
R4	-92718.700	+74933.340	DL15	-91948.894	+73099.212	XDL27A	-92010.803	+73141.447
R5	-92707.170	+74835.680	DL21	-91982.450	+73167.390	XDR9	-92726.560	+74435.160
R6	-92686.960	+74741.650	DL22	-92025.120	+73255.920	1082	-91935.020	+73107.370
R7	-92680.160	+74715.930	DL23	-92103.390	+73566.740	1083	-91961.640	+73162.030
DL8	-92425.790	+74494.740	DL24	-92102.270	+73568.370	1168	-91896.100	+73020.970
DL9	-92415.120	+74513.080	DR1	-92710.580	+74433.430	1269	-91949.510	+73100.580
DL10	-92478.360	+74751.990	DR10	-92696.760	+74711.140	1275	-91912.260	+73017.880
DL10A	-92168.986	+73951.411	DR11	-92722.960	+74833.060			
DL10C	-92239.358	+74155.806	DR12	-92734.660	+74932.240			
DL10D	-92238.362	+74157.445	DR13	-92735.950	+74954.180			

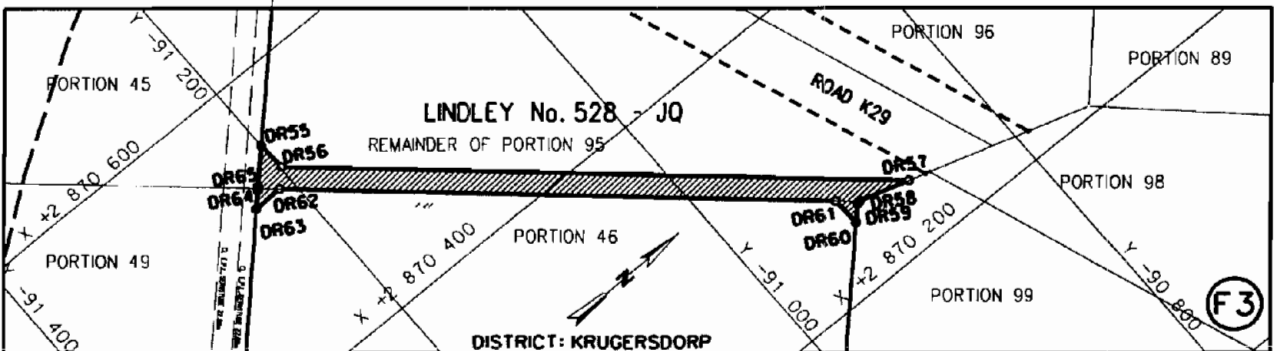
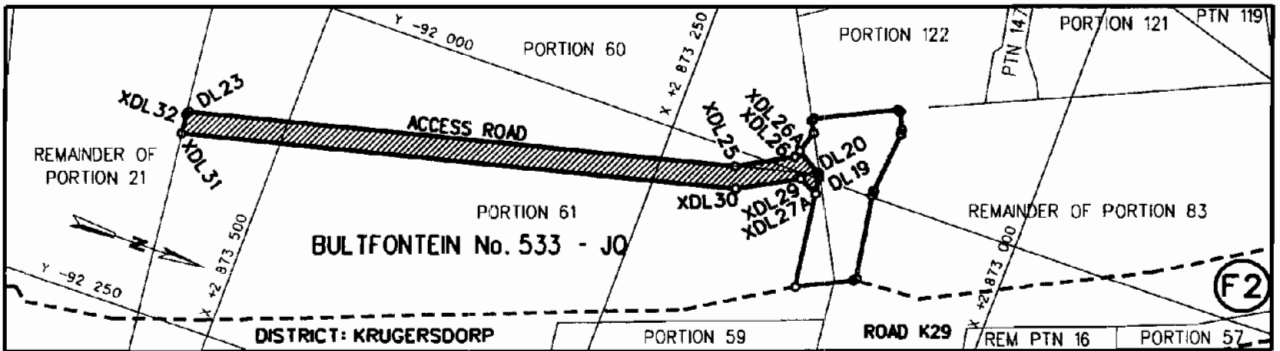
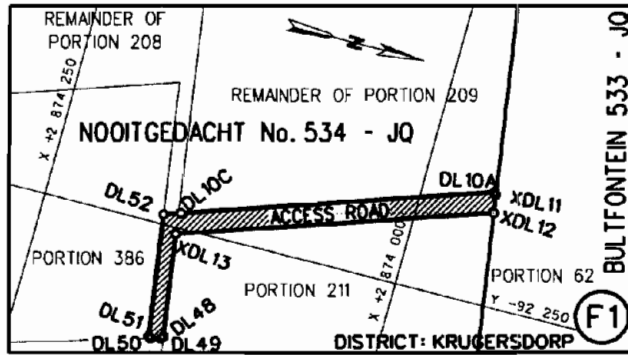
NOTICE 1667 OF 2009**CLOSING OF ACCESS ROADS IN CONNECTION WITH PROVINCIAL ROAD K29:
DISTRICT KRUGERSDORP**

In terms of section 13(2) of the Gauteng Transport Infrastructure Act, 2001 (Act No 8 of 2001) the MEC hereby declares that access roads are closed over the Remainders of Portion 207 and Portion 163 of the farm Nooitgedacht 534 JQ, Portions 60, 61 and Remainder of Portion 83 of the farm Bultfontein 533 JQ and Portion 32 of the farm Nietgedacht 535 JQ, district Krugersdorp, as indicated on the accompanying sketch plans.

In terms of section 23(6) of the abovementioned act it is hereby declared that plans GRP 07/49/1 Exp – 2 Exp which indicate the said closure of the access roads on the land concerned in detail, are available for inspection by any interested person at the office of the Department of Roads and Transport, 41 Simmonds Street, Sage Life Building, Johannesburg during office hours.

MEC Resolution 012 dated 26 January 2009

Reference: 2/1/1/2/3/1-K29

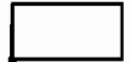


REFERENCE / VERWYSINGS

GEPROKLAAMEERDE TOEGANGSPAARIE
PROCLAIMED ACCESS ROADS



BESTAANDE TOEGANGSPAARIE
EXISTING ACCESS ROADS



- DIE FIGURE : 1: DL52, DL10C, DL10A, XDL11 - XDL13, DL48-DL52.
 THE FIGURES : 2: DL23, XDL25, XDL26, XDL26A, DL20, DL19, XDL27A, XDL29-XDL32, DL23.
 3: DR55 - DR65, DR55.

VERTEENWOORDIG DIE PROKLAMASIE VAN DIE TOEGANGSPAARIE OOR GEDEELTE 211 EN DIE RESTANT VAN GEDEELTE 208 VAN DIE PLAAS NOOITGEDACHT 534-JQ, GEDEELTES 60 EN 61 VAN DIE PLAAS BULTFONTEIN 533-JQ EN GEDEELTE 46 EN DIE RESTANT VAN GEDEELTE 95 VAN DIE PLAAS LINDLEY 528 - JQ SOOS BEDOEL BY DIE AFKONDIGING DAARVAN IN DIE PROVINSIALE KOERANT EN IN DETAIL GETOON OP PLANNE GRP 07/49/1Exp-4Exp.

REPRESENT THE PROCLAMATION OF ACCESS ROADS OVER 211 AND THE RESTANT OF PORTION 208 OF THE FARM NOOITGEDACHT 534-JQ, PORTIONS 60, 61 OF THE FARM BULTFONTEIN 533-JQ AND PORTION 46 AND THE RESTANT OF PORTION 95 OF THE FARM LINDLEY 528-JQ AS INTENDED BY THE PUBLICATION THEREOF IN THE PROVINCIAL GAZETTE AND SHOWN IN DETAIL ON PLANS GRP 07/49/1Exp-4Exp.

BUNDEL NR. / FILE NO. 2/1/1/2/3/1-K29(4)

KÖÖRDINATE LYS/CO-ORDINATE LIST WG 29° KONST./CONST. Y= +/- 0.00 X= +2 800 000.00								
DL10A	-92169.981	+73949.767	DR55	-91199.814	+70551.742	XDL11	-92169.981	+73949.767
DL10C	-92255.946	+74154.839	DR56	-91198.846	+70530.887	XDL12	-92184.577	+73947.547
DL19	-92011.926	+73139.278	DR57	-90875.897	+70244.985	XDL13	-92255.946	+74154.839
DL20	-92004.071	+73154.452	DR58	-90911.010	+70255.552	XDL25	-92011.128	+73199.975
DL23	-92105.249	+73568.010	DR59	-90913.490	+70254.907	XDL26	-91990.909	+73163.706
DL48	-92327.436	+74144.250	DR60	-90922.887	+70245.214	XDL26A	-91985.678	+73162.030
DL49	-92239.346	+74145.468	DR61	-90923.677	+70265.927	XDL27A	-92010.803	+73141.447
DL50	-92331.364	+74152.282	DR62	-91210.201	+70519.570	XDL29	-92004.074	+73154.452
DL51	-92230.306	+74153.941	DR63	-91231.847	+70518.728	XDL30	-92026.006	+73194.087
DL52	-92243.178	+74166.905	DR64	-91222.488	+70528.458	XDL31	-92119.704	+73566.260
			DR65	-91220.399	+70530.611	XDL32	-92105.249	+73568.010

NOTICE 1668 OF 2009

PROPOSED EXPROPRIATION OF A TUNNEL SERVITUDE IN RESPECT OF THE GAUTRAIN RAPID RAIL LINK PROJECT BETWEEN PARK STATION (JOHANNESBURG) AND SANDTON STATION

1. Due to amendments to the horizontal and vertical alignment of the tunnel servitudes over the properties listed hereunder of which the horizontal alignment is on the accompanying sketch plans, and the fact that the addresses of the owners concerned could not be traced, it is hereby notified for general information in terms of regulation 13 of the Gauteng Transport Infrastructure Regulations, 2002, that the MEC for Public Transport, Roads and Works intends to expropriate the rights for tunnel servitudes for the purpose of accommodating railway lines as defined in section 1 of the Gauteng Transport Infrastructure Act, 2001 (Act No 8 of 2001) under the following properties:

PROPERTY DESCRIPTION	TITLE DEED NO	SIZE OF PROPERTY	AREA AFFECTED	REGISTERED OWNER	APPROXIMATE DEPTH OF TUNNEL VARIES BETWEEN
Erf 4986 Johannesburg	Unknown	Unknown	19m ²	Unknown	49m-69m
Portion 1 of Erf 641 Parktown	Unknown	Unknown	113m ²	Unknown	14m-34m
Portion 2 of Erf 308 Houghton Estate	Unknown	Unknown	4 m ²	Unknown	9m-29m
Portion 1 of Erf 10 Riviera	Unknown	Unknown	2074m ²	Unknown	9m-29m
Portion 8 of Erf 10 Riviera	Unknown	Unknown	982m ²	Unknown	9m-29m
Portion 3 of Erf 21 Riviera	T75903/2004	3289m ²	86m ²	Oxford Trust	9m-29m
Portion 6 of Erf 119 Hyde Park Ext 2	T52709/2007	725m ²	571m ²	Gordon Frank Farber	68m-88m
Remaining Extent of Holding 28 Hyde Park Agricultural Settlement	T120463/2000	1.1993ha	2076m ²	Fulloutput 119 Pty Ltd	68m-88m
Erf 15 Illovo	T81404/1989	3563m ²	442m ²	Mr M.A Jackson and Ms L.M Jackson	75m-95m
Erf 29 Illovo	Unknown	3718m ²	601m ²	Unknown	75m-95m
Portion 2 of Erf 454 Illovo	T49618/2008	2478m ²	590m ²	Little River Trading 191	75m-95m

				Pty Ltd	
Remainder of Erf 453 Illovo	T79929/1998	4221m ²	632m ²	Erf 453 Illovo Prop Holding Pty Ltd	75m-95m
Portion 1 of Erf 200 Dunkeld	T90325/2002	2945 m ²	88m ²	Mr D.A.K Ahmed and Mr T.A.A Akbar	29m-49m
Remaining Extent of Portion 7 of the farm Zandfontein 42-IR	Unknown	6.8390ha	7660m ²	Unknown	75m-95m
Portion 144 of the farm Zandfontein 42-IR	T28711/1990	8836 m ²	1212m ²	Nunan Trust	75m-95m

2. The rights which the MEC intends to expropriate are the following:

2.1 The **MEC** shall have the right to tunnel below the surface of the servitude area and to carry out such investigations and tests, as may be necessary for or in connection with the said tunneling.

2.2 The surface of the servitude area may be used by the owner subject to the rights herein expropriated by the **MEC**, but none of the following activities may be conducted on or below the surface of the servitude area without the written permission of the MEC or his delegatee first having been had and obtained and subject to such conditions as the **MEC** or his delegatee may lay down:

- The sinking of boreholes.
- The construction of basements below the surface of the servitude area.
- Piling of foundations of any buildings or structures to be erected on the surface.
- The construction, laying or installation of any pipelines, electrical lines, cables or any structure of whatsoever nature at depths **exceeding three meters below the surface of the servitude area.**
- The use of explosives for any excavation of whatsoever nature below the surface of the servitude area.
- Any excavation of any nature **deeper than three meters below the surface of the servitude area.**

3. In terms of the aforementioned regulation 13 the owners, occupiers and the other interested parties are requested to lodge written comments on or objections with regard to the aforementioned intention as contemplated by the MEC, in writing to the Head: Department of Public Transport, Roads and Works, Private Bag X83, Marshalltown 2107, Attention: Director: Design or by fax 011 3557235, within 21 (twenty one) days from the date of this notice.

Reference: 2/1/7/8- Gautrain
Dated:09 October 2009

