

*THE PROVINCE OF
GAUTENG*

*DIE PROVINSIE
GAUTENG*

**Provincial Gazette Extraordinary
Buitengewone Provinsiale Koerant**

Vol. 15

PRETORIA, 27 NOVEMBER 2009

No. 259

CONTENTS • INHOUD

<i>No.</i>		<i>Page No.</i>	<i>Gazette No.</i>
GENERAL NOTICE			
4021	Gauteng Transport Infrastructure Act (8/2001): Proclamation of a provincial railway line in connection with the Gautrain Rapid Rail Link between Pretoria, Johannesburg and the OR Tambo International Airport.....	3	259

GENERAL NOTICE

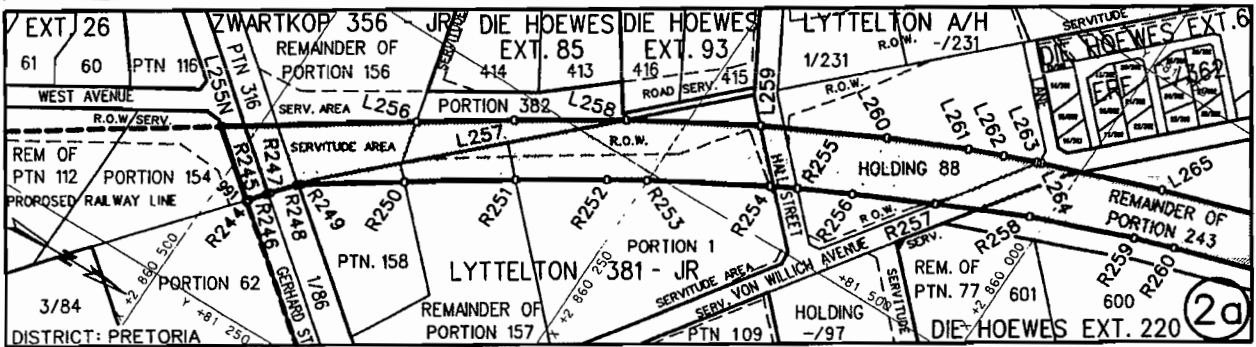
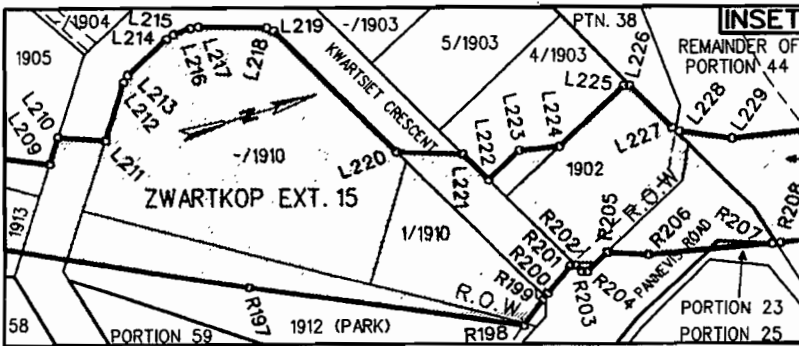
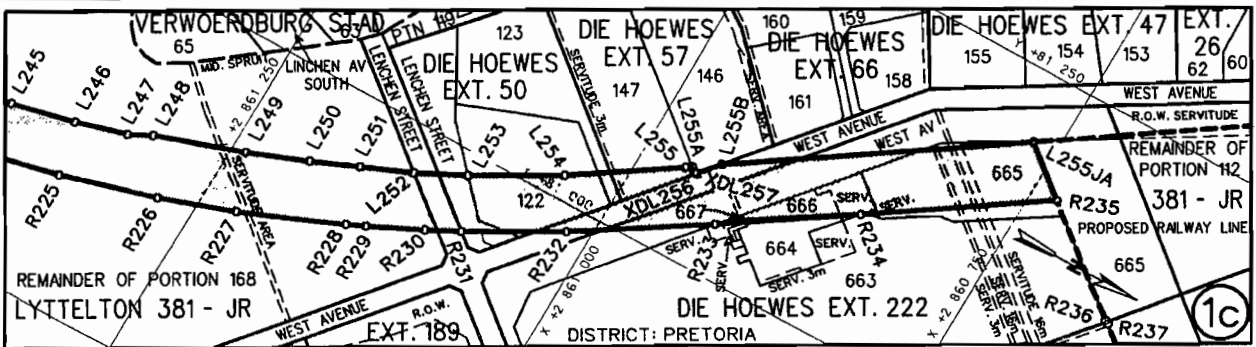
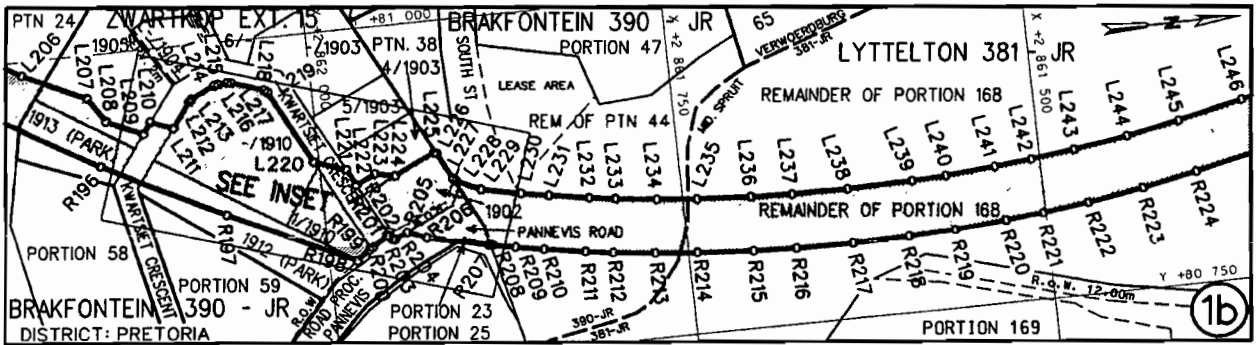
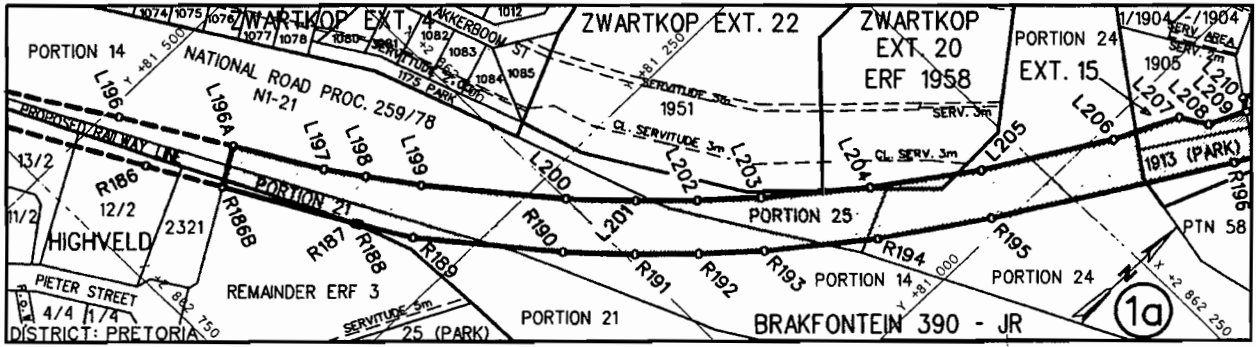
NOTICE 4021 OF 2009

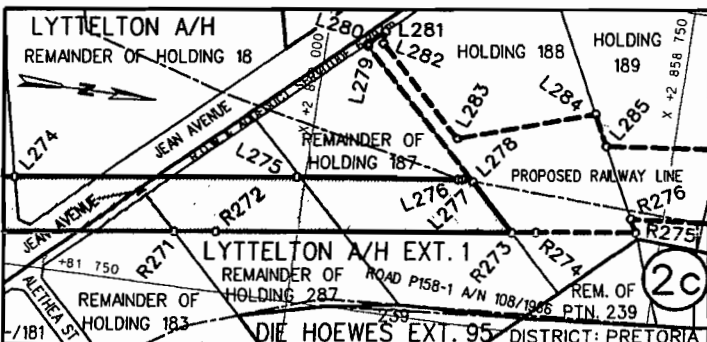
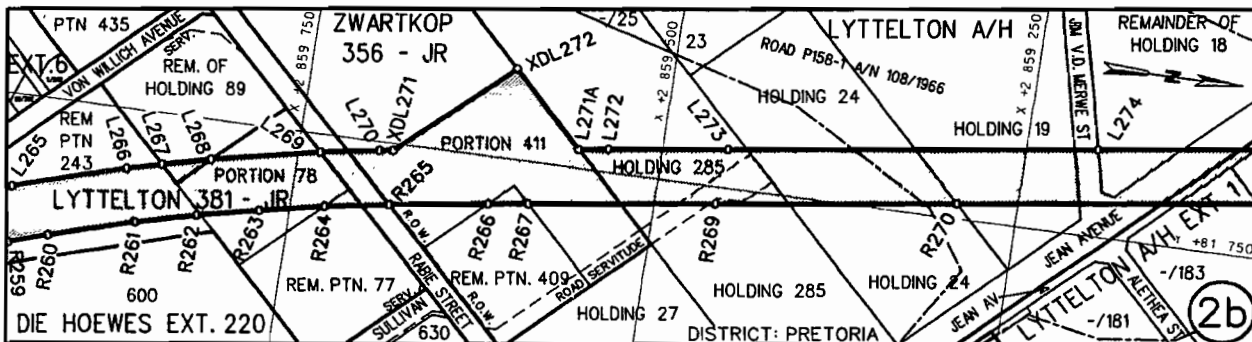
PROCLAMATION OF A PROVINCIAL RAILWAY LINE IN CONNECTION WITH THE GAUTRAIN RAPID RAIL LINK BETWEEN PRETORIA, JOHANNESBURG AND THE O R TAMBO INTERNATIONAL AIRPORT

In terms of section 11(1)(b) of the Gauteng Transport Infrastructure Act, 2001 (Act No 8 of 2001) the MEC hereby proclaims that a provincial railway line with varying widths exists on the land as described and indicated by the figures on the accompanying sketch plans.

In terms of section 23(6) of the aforementioned act it is hereby stated that plans GRP03/38/31Exp-33Exp which indicate the land affected by the railway line in detail, are available for inspection during office hours at the office of the Department of Roads and Transport, First Floor, South Tower, Sage Life Building, 41 Simmonds Street, Johannesburg.

Reference: 2/1/7/8-Gautrain





REFERENCE / VERWYSINGS

GEPROKLAAMEERDE SPOORLYN
PROCLAIMED RAILWAY LINE



DIE FIGURE : (1a-c) L196A, L197 - L255, L255A, XDL256, XDL257, L255B, L255JA, R235 - R187, R186B, L196A.
THE FIGURES : (2a-c) L255N, L256 - L270, XDL271, XDL272, L271A - L278, R273 - R269, R267 - R245, 991, L255N.

VERTEENWOORDIG DIE PROKLAMASIE VAN DIE BETROKKE GEDEELTE VAN DIE SPOORLYN OOR DIE RESTANT VAN ERF 3 IN HIGHVELD, GEDEELTES 14, 21, 25, 24, 23 EN DIE RESTANT VAN GEDEELTE 44 VAN DIE PLAAS BRAKFORTEIN 390-JR, ERF 1951 IN ZWARTKOP UITBREIDING 22, ERF 1958 IN ZWARTKOP UITBREIDING 20, ERVE 1905, 1913(PARK), 1912(PARK), DIE RESTANT EN GEDEELTE 1 VAN ERF 1910, GEDEELTE 4 VAN ERF 1903, ERF 1902, GEDEELTES VAN KWARTSIETSINGEL EN PANNEVISWEG IN ZWARTKOP UITBREIDING 15, DIE RESTANT VAN GEDEELTE 168, GEDEELTE 158, DIE RESTANT VAN GEDEELTE 157, GEDEELTE 1, DIE RESTANT VAN GEDEELTE 243, GEDEELTE 78 EN DIE RESTANT VAN GEDEELTE 77 VAN DIE PLAAS LYTTELTON 381-JR, ERVE 122, 123 EN 'N GEDEELTE VAN LENCHENSTRAAT IN DIE HOEWES UITBREIDING 50, ERF 147 IN DIE HOEWES UITBREIDING 57, ERVE 663, 664, 667, 666, 665 EN 'N GEDEELTE VAN WESTLAAN IN DIE HOEWES UITBREIDING 222, GEDEELTE 1 VAN HOEWE 86, HOEWE 88, DIE RESTANTE VAN HOEWES 89, 183, 287, 187, GEDEELTES VAN WESTLAAN, GERHARDSTRAAT, HALLSTRAAT, VON WILLICHSTRAAT EN JEANLAAN IN LYTTELTON LANDBOUHOEWES UITBREIDING 1, GEDEELTE 316, DIE RESTANT VAN GEDEELTE 156, GEDEELTES 382, 411 EN DIE RESTANT VAN GEDEELTE 409 VAN DIE PLAAS ZWARTKOP 356-JR, HOEWES 27, 285, 24, 19, DIE RESTANT VAN HOEWE 18, GEDEELTES VAN RABIESTRAAT, JIM V.D. MERWESTRAAT EN JEANLAAN IN LYTTELTON LANDBOUHOEWES SOOS BEDOEL BY DIE AFKONDIGING DAARVAN IN DIE PROVINSIALE KOERANT EN IN DETAIL GETOON OP PLANNE GRP 03/38/31Exp-33Exp.

REPRESENT THE PROCLAMATION OF THE PORTION CONCERNED OF THE RAILWAY LINE OVER THE REMAINDER OF ERF 3 IN HIGHVELD, PORTIONS 14, 21, 25, 24, 23 AND THE REMAINDER OF PORTION 44 OF THE FARM BRAKFORTEIN 390-JR, ERF 1951 IN ZWARTKOP EXTENSION 22, ERF 1958 IN ZWARTKOP EXTENSION 20, ERVEN 1905, 1913(PARK), 1912(PARK), THE REMAINDER AND PORTION 1 OF ERF 1910, PORTION 4 OF ERF 1903, ERF 1902, PORTIONS OF KWARTSIET CRESCENT AND PANNEVIS ROAD IN ZWARTKOP EXTENSION 15, THE REMAINDER OF PORTION 168, PORTION 158, THE REMAINDER OF PORTION 157, PORTION 1, THE REMAINDER OF PORTION 243, PORTION 78 AND THE REMAINDER OF PORTION 77 OF THE FARM LYTTELTON 381-JR, ERVEN 122, 123 AND A PORTION OF LENCHEN AVENUE IN DIE HOEWES EXTENSION 50, ERF 147 IN DIE HOEWES EXTENSION 57, ERVEN 663, 664, 667, 666, 665 AND A PORTION OF WEST AVENUE IN DIE HOEWES EXTENSION 222, PORTION 1 OF HOLDING 86, HOLDING 88, THE REMAINDERS OF HOLDINGS 89, 183, 287, 187, PORTIONS OF WEST AVENUE, GERHARD STREET, HALL STREET, VON WILLICH STREET AND JEAN AVENUE IN LYTTELTON AGRICULTURAL HOLDINGS EXTENSION 1, PORTION 316, THE REMAINDER OF PORTION 156, PORTIONS 382, 411 AND THE REMAINDER OF PORTION 409 OF THE FARM ZWARTKOP 356-JR, HOLDINGS 27, 285, 24, 19, THE REMAINDER OF HOLDING 18, PORTIONS OF RABIE STREET, JIM V.D. MERWE STREET AND JEAN AVENUE IN LYTTELTON AGRICULTURAL HOLDINGS AS INTENDED BY THE PUBLICATION THEREOF IN THE PROVINCIAL GAZETTE AND SHOWN IN DETAIL ON PLANS GRP 03/38/31Exp-33Exp.

KOÖRDINATE LYS/CO-ORDINATE LIST WG 29° KONST./CONST. Y= +/- 0.00 X= +2 800 000.00					
L196A	+81420.512	+62636.359	L255B	+81078.797	+60947.194
L197	+81364.071	+62603.775	L255JA	+81200.656	+60767.192
L198	+81339.731	+62587.165	L255N	+81366.567	+60522.128
L199	+81307.822	+62564.355	L256	+81442.446	+60410.050
L200	+81229.083	+62499.754	L257	+81480.795	+60353.113
L201	+81193.155	+62466.076	L258	+81523.472	+60286.949
L202	+81162.907	+62435.413	L259	+81570.704	+60205.631
L203	+81132.647	+62402.387	L260	+81610.517	+60127.112
L204	+81084.504	+62343.871	L261	+81634.048	+60074.999
L205	+81038.905	+62280.310	L262	+81643.308	+60051.498
L206	+80989.791	+62199.515	L263	+81651.792	+60029.476
L207	+80968.429	+62155.302	L264	+81652.829	+60026.661
L208	+80949.910	+62144.056	L265	+81681.583	+59944.996
L209	+80938.244	+62118.930	L266	+81705.678	+59866.883
L210	+80946.507	+62113.133	L267	+81712.015	+59842.813
L211	+80940.290	+62097.955	L268	+81720.301	+59809.232
L212	+80958.347	+62085.283	L269	+81736.394	+59734.789
L213	+80960.234	+62083.074	L270	+81743.281	+59694.728
L214	+80968.363	+62066.441	L271A	+81763.703	+59557.707
L215	+80969.116	+62063.596	L272	+81766.631	+59537.272
L216	+80969.507	+62057.370	L273	+81778.206	+59454.830
L217	+80969.115	+62054.454	L274	+81813.920	+59201.130
L218	+80961.492	+62032.241	L275	+81841.302	+59005.646
L219	+80959.657	+62030.163	L276	+81855.351	+58895.414
L220	+80904.909	+62003.376	L277	+81855.469	+58892.428
L221	+80896.973	+61981.714	L278	+81855.118	+58885.107
L222	+80885.159	+61975.937			
L223	+80891.999	+61962.394	R186B	+81404.544	+62662.683
L224	+80888.956	+61948.612	R187	+81320.455	+62616.863
L225	+80902.916	+61920.164	R188	+81317.837	+62615.398
L226	+80902.230	+61918.158	R189	+81284.361	+62596.133
L227	+80882.951	+61908.713	R190	+81202.354	+62529.513
L228	+80880.946	+61906.706	R191	+81165.340	+62494.822
L229	+80872.778	+61889.994	R192	+81133.936	+62462.993
L230	+80867.007	+61861.871	R193	+81102.789	+62429.005
L231	+80863.467	+61842.944	R194	+81053.836	+62367.310
L232	+80858.811	+61814.854	R195	+81008.782	+62300.385
L233	+80856.161	+61796.463	R196	+80917.245	+62151.122
L234	+80852.675	+61767.976	R197	+80872.945	+62067.307
L235	+80849.933	+61739.804	R198	+80829.690	+61980.835
L236	+80847.296	+61702.162	R199	+80836.684	+61971.685
L237	+80846.184	+61673.751	R200	+80838.453	+61969.263
L238	+80845.907	+61635.227	R201	+80846.007	+61958.434
L239	+80846.907	+61589.893	R202	+80845.517	+61956.546
L240	+80848.137	+61566.474	R203	+80842.823	+61955.231
L241	+80850.995	+61531.729	R204	+80842.160	+61953.239
L242	+80853.788	+61505.817	R205	+80846.688	+61944.431
L243	+80857.820	+61475.375	R206	+80841.392	+61931.100
L244	+80863.851	+61438.057	R207	+80831.670	+61888.796
L245	+80871.312	+61400.366	R208	+80831.039	+61885.863
L246	+80882.038	+61354.228	R209	+80827.885	+61870.141
L247	+80892.226	+61317.731	R210	+80824.210	+61850.564
L248	+80900.574	+61301.801	R211	+80819.382	+61821.570
L249	+80921.548	+61240.247	R212	+80816.574	+61802.148
L250	+80938.027	+61198.585	R213	+80812.973	+61772.821
L251	+80951.816	+61166.139	R214	+80810.121	+61743.657
L252	+80966.277	+61131.629	R215	+80807.366	+61704.484
L253	+80983.590	+61097.970	R216	+80806.204	+61674.965
L254	+81017.286	+61038.933	R217	+80805.711	+61635.747
L255	+81064.624	+60968.128	R218	+80806.580	+61596.510
L255A	+81067.217	+60964.299	R219	+80808.201	+61564.225
			R220	+80811.166	+61528.037
			R221	+80814.022	+61501.493
			R222	+80818.251	+61469.522
			R223	+80824.528	+61430.730
			R224	+80832.295	+61391.551
			R225	+80843.140	+61344.491
			R226	+80862.525	+61276.472
			R227	+80880.699	+61223.906
			R228	+80909.808	+61153.110
			R229	+80915.440	+61140.597
			R230	+80933.237	+61103.601
			R231	+80944.995	+61080.999
			R232	+80981.510	+61016.933
			R233	+81038.218	+60928.742
			R234	+81094.684	+60845.170
			R235	+81171.667	+60731.735
			R236	+81111.479	+60658.117
			R237	+81109.870	+60655.449
			R238	+80992.166	+60511.532
			R239	+80992.377	+60509.421
			R240	+81204.309	+60336.050
			R241	+81206.963	+60335.250
			R242	+81212.847	+60335.840
			R243	+81215.290	+60337.151
			R244	+81329.040	+60476.197
			R245	+81331.181	+60476.447
			R246	+81341.298	+60468.709
			R247	+81343.651	+60466.848
			R248	+81358.423	+60454.771
			R249	+81360.427	+60452.581
			R250	+81400.851	+60393.091
			R251	+81444.260	+60328.595
			R252	+81479.241	+60274.692
			R253	+81494.056	+60250.688
			R254	+81536.671	+60176.065
			R255	+81545.565	+60159.288
			R256	+81562.465	+60125.108
			R257	+81587.441	+60072.319
			R258	+81614.799	+60011.821
			R259	+81640.471	+59941.851
			R260	+81649.495	+59913.998
			R261	+81667.335	+59855.145
			R262	+81678.301	+59813.372
			R263	+81687.905	+59770.628
			R264	+81697.296	+59726.362
			R265	+81704.802	+59682.357
			R266	+81715.083	+59614.903
			R267	+81719.083	+59587.192
			R269	+81737.483	+59457.901
			R270	+81761.007	+59291.791
			R271	+81789.930	+59084.966
			R272	+81794.062	+59056.241
			R273	+81822.337	+58853.351
			XDL256	+81064.430	+60960.890
			XDL257	+81064.640	+60958.780
			XDL271	+81744.720	+59685.340
			XDL272	+81816.520	+59608.920
			991	+81329.990	+60477.358