

*THE PROVINCE OF
GAUTENG*

*DIE PROVINSIE
GAUTENG*

**Provincial Gazette Extraordinary
Buitengewone Provinsiale Koerant**

Vol. 15

**PRETORIA, 4 FEBRUARY 2009
FEBRUARIE**

No. 27

CONTENTS • INHOUD

<i>No.</i>		<i>Page No.</i>	<i>Gazette No.</i>
GENERAL NOTICES			
389	Gauteng Transport Infrastructure Act (8/2001): Proclamation of access roads in connection with Provincial Road K29: District Krugersdorp.....	3	27
390	do.: Proclamation of a portion of Provincial Road K29: District Krugersdorp.....	7	27
391	do.: Proclamation of an access road in connection with the Gautrain Rapid Rail Link between Pretoria, Johannesburg and the OR Tambo International Airport	11	27
392	do: Proclamation of a portion of Provincial Road K31 District Krugersdorp.....	14	27

GENERAL NOTICES

NOTICE 389 OF 2009

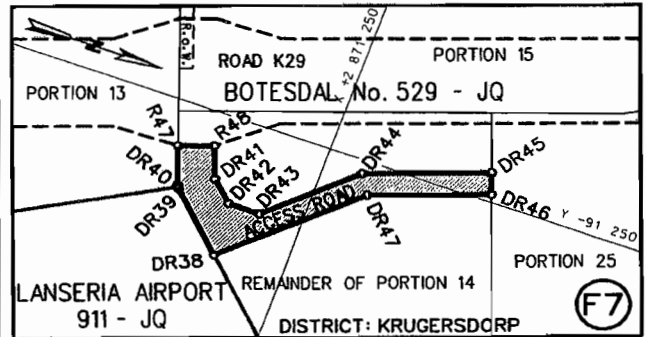
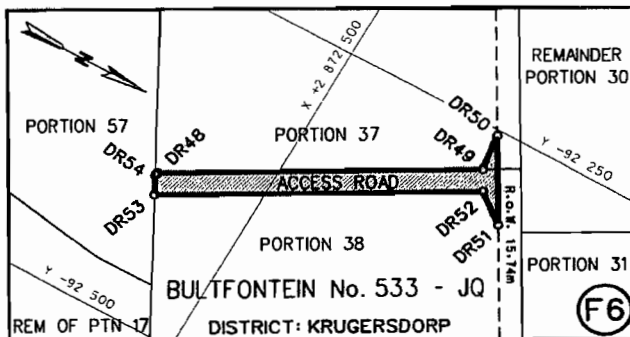
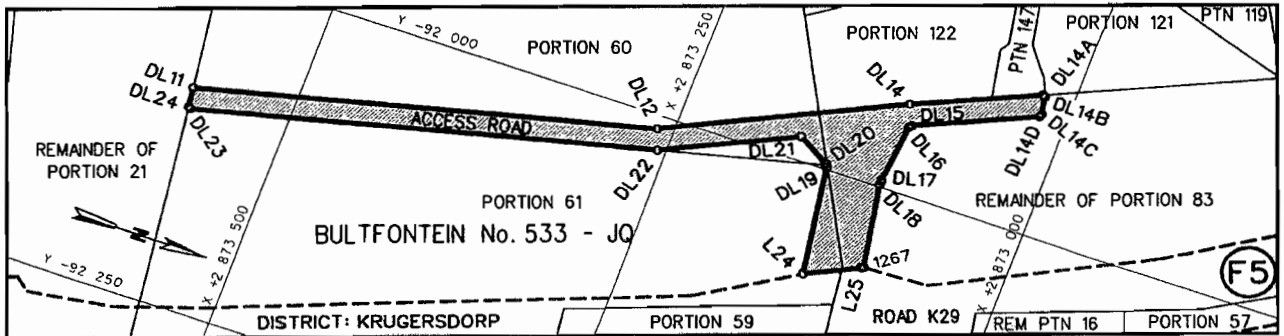
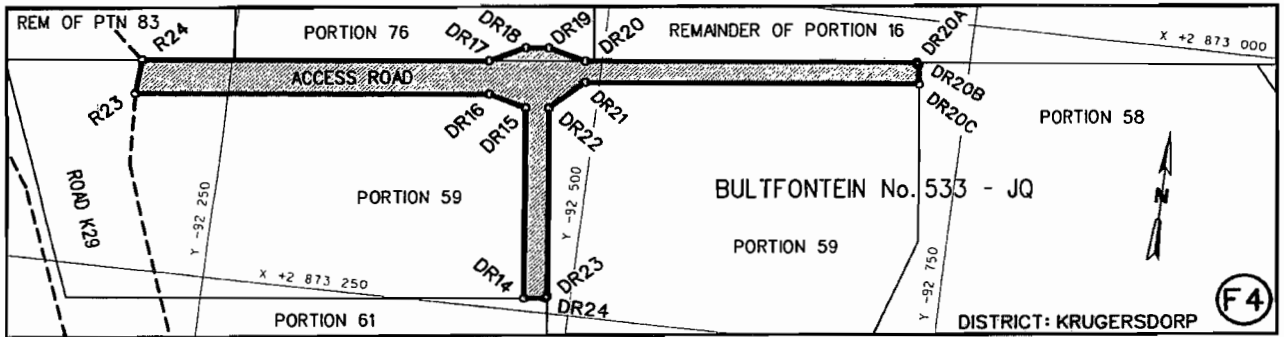
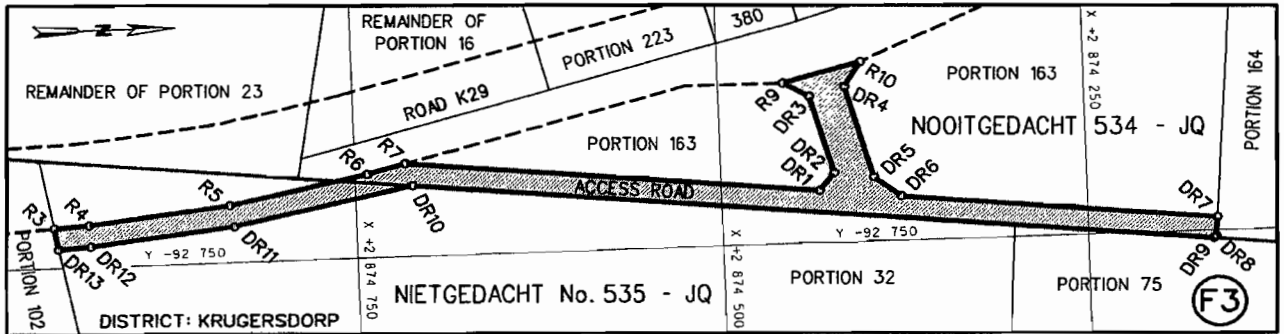
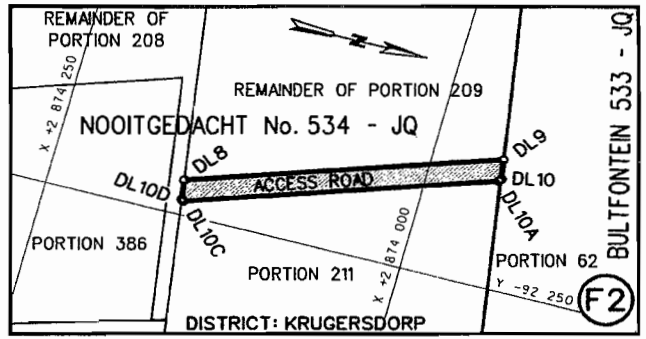
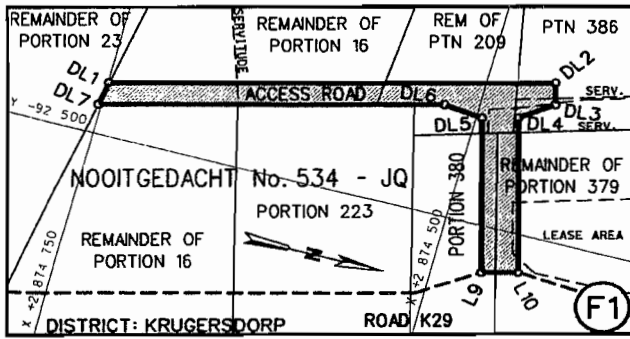
PROCLAMATION OF ACCESS ROADS IN CONNECTION WITH PROVINCIAL ROAD K29 : DISTRICT KRUGERSDORP

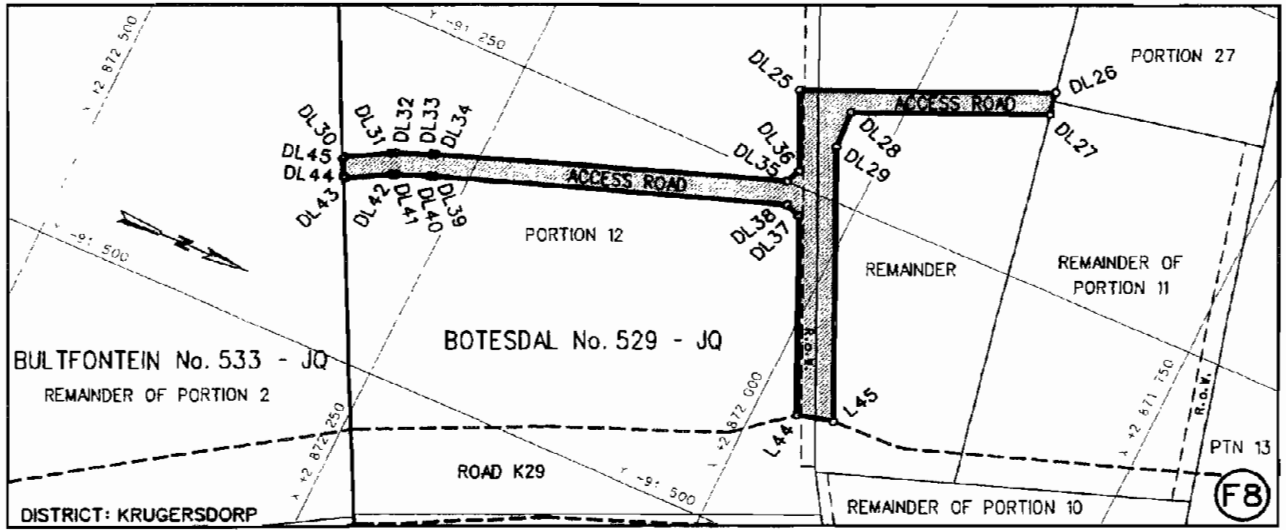
In terms of section 13(1) of the Gauteng Transport Infrastructure Act, 2001, (Act No. 8 of 2001) the MEC hereby proclaims that access roads exist on the Remainders of Portions 16, 209, Portions 386, 380, 379, 207 and 163 of the farm Nooitgedacht 534-JQ, Portions 60, 61, 59, 76, 37, 38 and the Remainder of Portion 83 of the farm Bultfontein 533-JQ, Portions 28, 31, 12, the Remainder of Portion 14 and the Remainder of the farm Botesdal 529-JQ as indicated on the accompanying sketch plans.

In terms of section 23(6) of the aforementioned Act it is hereby declared that boundary beacons demarcating the land encroached upon by the proclamation of the access roads, have been erected on the land and that plans GRP 07/49/1EXP – 4EXP which indicate the said encroachment of the land, are available for inspection by any interested person at the office of the Department of Public Transport, Roads and Works, 41 Simmonds Street, Sage Life Building, Johannesburg.

MEC Resolution: 001 Dated 26 January 2009

Reference: 2/1/1/2/3/1-K29





REFERENCE / VERWYSINGS

GEPROKLAAMEERDE TOEGANGSPAARIE
PROCLAIMED ACCESS ROADS

- DIE FIGURE / THE FIGURES
- 1 DL1 - DL4, L10 - L9, DL5 - DL1.
 - 2 DL8 - DL10, DL10A, DL10C, DL10D, DL8.
 - 3 DR1 - DR3, R9 - R10, DR4 - DR12, R3 - R7, DR1
 - 4 DR14 - DR16, R23, R24, DR17 - DR20, DR20A, DR20B, DR20C, DR21 - DR24, DR14.
 - 5 DL11 - DL14, DL14A, DL14B, DL14C, DL14D, DL15 - DL18, 1267, L25, L24, DL19 - DL24, DL11
 - 6 DR48 - DR54, DR48.
 - 7 DR38, DR40, R47 - R48, DR41 - DR47, DR38.
 - 8 DL25 - DL29, L45 - L44, DL37 - DL45, DL30 - DL35.

VERTEENWOORDIG DIE PROKLAMASIE VAN DIE TOEGANGSPAARIE OOR DIE RESTANTE VAN GEDEELTES 16, 209, GEDEELTES 386, 380, 379, 207 EN 163 VAN DIE PLAAS NOOITGEDACHT 534-JQ, GEDEELTES 60, 61, 59, 76, 37, 38 EN DIE RESTANT VAN GEDEELTE 83 VAN DIE PLAAS BULTFONTEIN 533-JQ, GEDEELTES 28, 31, 12, DIE RESTANT VAN GEDEELTE 14 EN DIE RESTANT VAN DIE PLAAS BOTESDAL 529-JQ SOOS BEDOEL BY DIE AFKONDIGING DAARVAN IN DIE PROVINSIALE KOERANT EN IN DETAIL GETOON OP PLANNE GRP 07/49/1Exp-4Exp.

REPRESENT THE PROCLAMATION OF ACCESS ROADS OVER THE REMAINDERS OF PORTIONS 16, 209, PORTIONS 386, 380, 379, 207 AND 163 OF THE FARM NOOITGEDACHT 534-JQ, PORTIONS 60, 61, 59, 76, 37, 38 AND THE REMAINDER OF PORTION 83 OF THE FARM BULTFONTEIN 533-JQ, PORTIONS 28, 31, 12, THE REMAINDER OF PORTION 14 AND THE REMAINDER OF THE FARM BOTESDAL 529-JQ AS INTENDED BY THE PUBLICATION THEREOF IN THE PROVINCIAL GAZETTE AND SHOWN IN DETAIL ON PLANS GRP 07/49/1Exp-4Exp.

BUNDEL NR. / FILE NO. 2/1/1/2/3/1-K29(4)

KOÖRDINATE LYS/CO-ORDINATE LIST WG 27° KONST./CONST. Y = +/- 0.00 X = +2 800 000.00

L9	-92534.070 +74466.120	DL18	-91998.680 +73104.620	DR16	-92426.130 +73091.090
L10	-92527.690 +74441.960	DL19	-91998.320 +73143.280	DR17	-92423.260 +73066.260
L24	-92078.270 +73131.530	DL20	-91996.070 +73144.780	DR18	-92446.990 +73053.720
L25	-92058.380 +73094.380	DL21	-91982.450 +73167.390	DR19	-92462.880 +73051.860
L26	-92059.790 +73092.630	DL22	-92025.120 +73255.920	DR20	-92488.820 +73058.680
L44	-91404.350 +71971.740	DL23	-92103.390 +73566.740	DR20A	-92713.630 +73032.629
L45	-91398.170 +71947.430	DL24	-92102.270 +73568.370	DR20B	-92715.292 +73034.119
R3	-92720.090 +74957.040	DL25	-91830.930 +72872.600	DR20C	-92716.959 +73048.523
R4	-92718.700 +74933.340	DL26	-91828.640 +72872.160	DR21	-92490.650 +73074.575
R5	-92707.170 +74835.680	DL27	-91702.180 +72722.670	DR22	-92468.050 +73096.580
R6	-92686.960 +74741.650	DL28	-91679.530 +72718.720	DR23	-92484.280 +73237.020
R7	-92680.160 +74715.930	DL29	-91662.650 +72698.750	DR24	-92482.960 +73238.690
R9	-92628.940 +74455.660	DL30	-91360.927 +72333.477	DR25	-91957.390 +72526.990
R10	-92614.950 +74402.750	DL31	-91345.403 +72306.233	DR26	-91959.990 +72525.480
R23	-92186.930 +73118.830	DL32	-91344.099 +72303.539	DR27	-91973.401 +72506.918
R24	-92188.620 +73093.390	DL33	-91334.931 +72280.811	DR28	-91975.606 +72504.970
R47	-91283.260 +71348.880	DL34	-91333.847 +72278.014	DR29	-91994.764 +72493.810
R48	-91275.000 +71325.344	DL35	-91249.482 +72051.133	DR30	-91997.540 +72492.812
DL1	-92461.000 +74748.950	DL36	-91239.415 +72046.953	DR31	-92022.420 +72489.270
		DL37	-91270.158 +72032.934	DR32	-92025.020 +72487.760
		DL38	-91265.667 +72043.752	DR33	-92080.410 +72455.420

KÖÖRDINATE LYS/CO-ORDINATE LIST WG 29° KONST./CONST. Y= +/- 0.00 X= +2 800 000.00								
DL2	-92399.650	+74517.160	DL39	-91348.767	+72272.234	DR34	-92082.610	+72455.860
DL3	-92381.320	+74506.490	DL40	-91349.851	+72275.031	DR35	-92086.870	+72461.500
DL4	-92374.940	+74482.330	DL41	-91358.529	+72296.549	DR36	-92088.520	+72464.000
DL5	-92385.574	+74463.992	DL42	-91359.833	+72299.243	DR37	-92095.700	+72476.310
DL6	-92401.044	+74459.912	DL43	-91375.247	+72326.287	DR38	-91351.220	+71298.700
DL7	-92419.410	+74470.580	DL44	-91374.649	+72328.263	DR39	-91312.642	+71340.105
DL8	-92425.790	+74494.740	DL45	-91363.011	+72334.107	DR40	-91310.505	+71339.288
DL9	-92415.120	+74513.080				DR41	-91297.795	+71316.863
DL10	-92478.360	+74751.990	DR1	-92710.580	+74433.430	DR42	-91311.518	+71302.114
DL10A	-92168.986	+73951.411	DR2	-92697.450	+74422.930	DR43	-91311.860	+71279.690
DL10C	-92239.358	+74155.806	DR3	-92639.450	+74438.260	DR44	-91259.580	+71223.110
DL10D	-92238.362	+74157.445	DR4	-92633.070	+74414.100	DR45	-91229.260	+71140.300
DL11	-92087.760	+73570.150	DR5	-92701.710	+74395.950	DR46	-91244.320	+71134.910
DL12	-92010.000	+73261.340	DR6	-92716.740	+74377.490	DR47	-91273.490	+71214.570
DL13	-91935.680	+73108.720	DR7	-92740.100	+74161.440	DR48	-92391.940	+72571.605
DL14	-91934.404	+73106.002	DR8	-92754.560	+74162.620	DR49	-92280.496	+72380.253
DL14A	-91896.716	+73022.338	DR9	-92755.900	+74164.230	DR50	-92253.872	+72384.228
DL14B	-91897.573	+73020.688	DR10	-92696.760	+74711.140	DR51	-92310.906	+72351.014
DL14C	-91910.787	+73018.162	DR11	-92722.960	+74833.060	DR52	-92294.335	+72372.236
DL14D	-91912.876	+73019.248	DR12	-92734.660	+74932.240	DR53	-92406.816	+72565.369
DL15	-91948.894	+73099.212	DR13	-92735.950	+74954.180	DR54	-92394.018	+72572.195
DL16	-91951.000	+73100.710	DR14	-92468.560	+73240.350			
DL17	-91995.710	+73104.740	DR15	-92452.160	+73098.420	1267	-92059.860	+73094.130

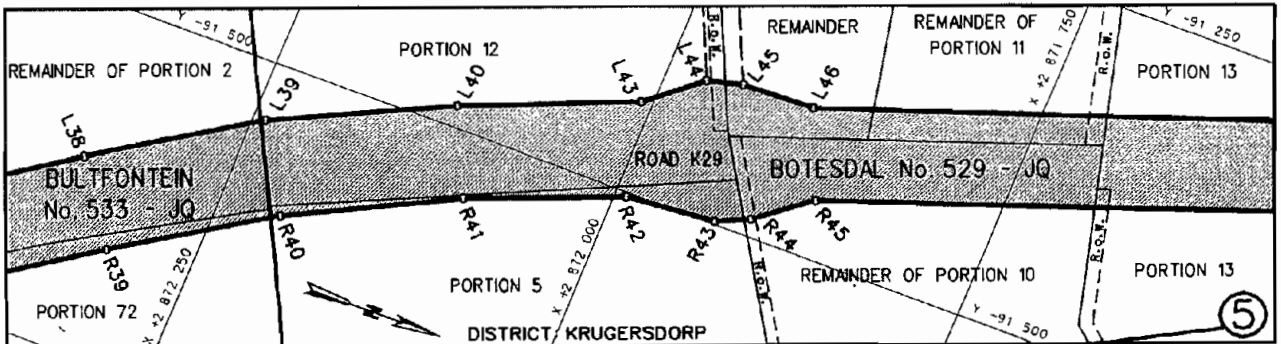
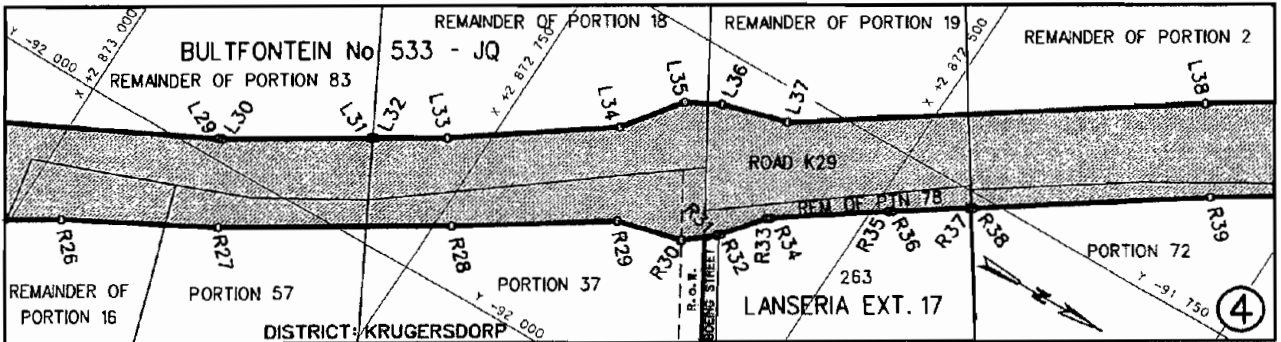
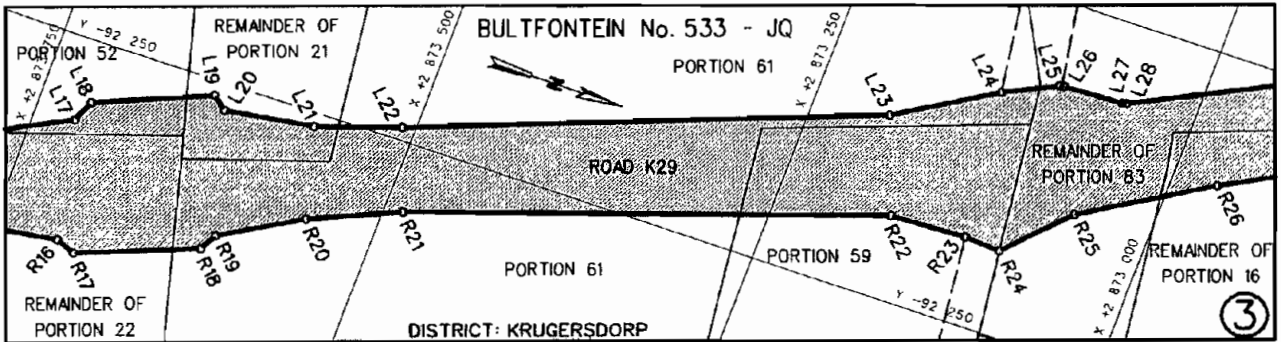
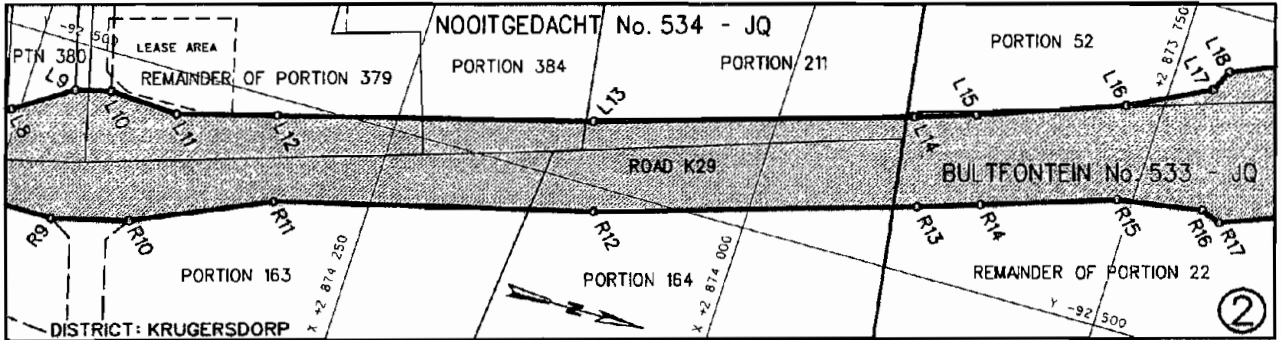
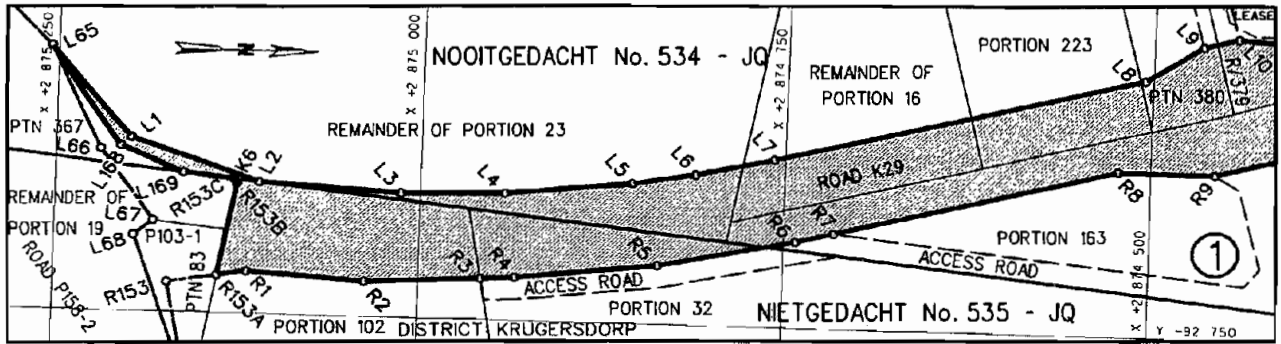
NOTICE 390 OF 2009**PROCLAMATION OF A PORTION OF PROVINCIAL ROAD K29 : DISTRICT KRUGERSDORP**

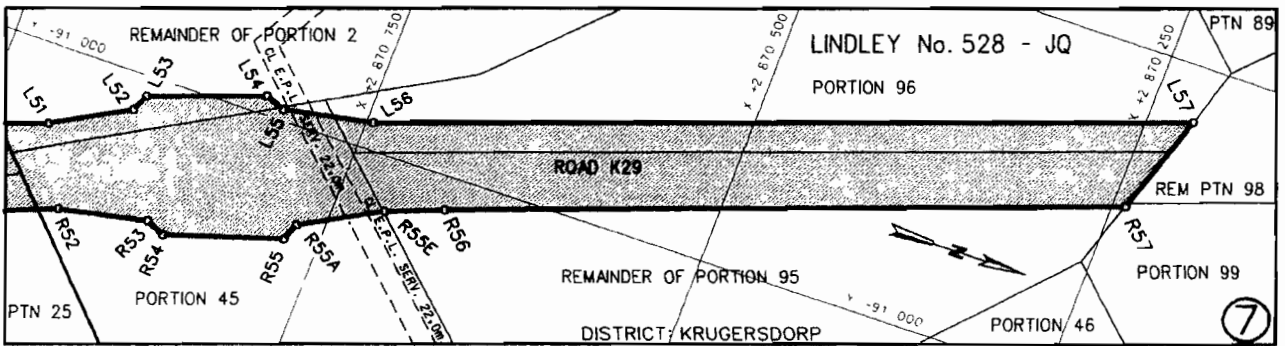
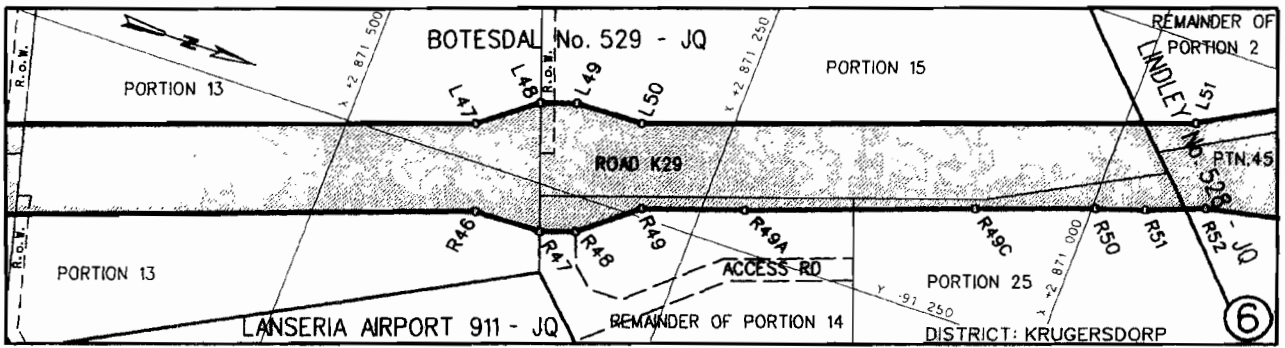
In terms of section 11(1)(b) of the Gauteng Transport Infrastructure Act, 2001 (Act No. 8 of 2001) the MEC hereby proclaims that a portion of provincial road K29 exists on the Remainders of Portions 23, 16, 379, Portions 223, 380, 384, 211, 163 and 164 of the farm Nooitgedacht 534-JQ, Portions 102 and 32 of the farm Nietgedacht 535-JQ, Portions 52, 61, 59, 57, 37, 72, the Remainders of Portions 21, 22, 83, 16, 18, 19, 2 and 78 of the farm Bultfontein 533-JQ, Portions 12, 5, 13, 15, 25, the Remainders of Portions 11, 10, 14 and the Remainder of the farm Botesdal 529-JQ, the Remainders of Portions 2, 95, Portions 49 and 96 of the farm Lindley 528-JQ as indicated on the accompanying sketch plans.

In terms of section 23(6) of the aforementioned Act is hereby declared that boundary beacons demarcating the land encroached upon by the proclamation of the road, have been erected on the land and that plans GRP 07/49/1EXP – 4EXP which indicate the said encroachment of the land, are available for inspection by any interested person at the office of the Department of Public Transport, Roads and Works, 41 Simmonds Street, Sage Life Building, Johannesburg.

MEC Resolution: 001 Dated 26 January 2009

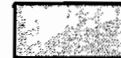
Reference: 2/1/1/2/3/1-K29





REFERENCE / VERWYSINGS

GEPROKLAAMEERDE PAD
PROCLAIMED ROAD



DIE FIGUUR / THE FIGURE L65, L1 - L40, L43 - L57, R57 - R1, R153A, R153B, K6, R153C, L169, L168, L65.

VERTEENWOORDIG DIE PROKLAMASIE VAN DIE BETROKKE GEDEELTE VAN PROVINSIALE PAD K29 OOR DIE RESTANTE VAN GEDEELTES 23, 16, 379, GEDEELTES 223, 380, 384, 211, 163 EN 164 VAN DIE PLAAS NOOITGEDACHT 534-JQ, GEDEELTES 102 EN 32 VAN DIE PLAAS NIETGEDACHT 535-JQ, GEDEELTES 52, 61, 59, 57, 37, 72, DIE RESTANTE VAN GEDEELTES 21, 22, 83, 16, 18, 19, 2 EN 78 VAN DIE PLAAS BULTFONTEIN 533-JQ, GEDEELTES 12, 5, 13, 15, 25, DIE RESTANTE VAN GEDEELTES 11, 10, 14 EN DIE RESTANT VAN DIE PLAAS BOTESDAL 529-JQ, DIE RESTANTE VAN GEDEELTES 2, 49, GEDEELTES 45 EN 96 VAN DIE PLAAS LINDLEY 528-JQ SOOS BEDOEL BY DIE AFKONDIGING DAARVAN IN DIE PROVINSIALE KOERANT EN IN DETAIL GETOON OP PLANNE GRP 07/49/1Exp-4Exp.

REPRESENTS THE PROCLAMATION OF THE PORTION CONCERNED OF PROVINCIAL ROAD K29 OVER THE REMAINDERS OF PORTIONS 23, 16, 379, PORTIONS 223, 380, 384, 211, 163 AND 164 OF THE FARM NOOITGEDACHT 534-JQ, PORTIONS 102 AND 32 OF THE FARM NIETGEDACHT 535-JQ, PORTIONS 52, 61, 59, 57, 37, 72, THE REMAINDERS OF PORTIONS 21, 22, 83, 16, 18, 19, 2 AND 78 OF THE FARM BULTFONTEIN 533-JQ, PORTIONS 12, 5, 13, 15, 25, THE REMAINDERS OF PORTIONS 11, 10, 14 AND THE REMAINDER OF THE FARM BOTESDAL 529-JQ, THE REMAINDERS OF PORTIONS 2, 49, PORTIONS 45 AND 96 OF THE FARM LINDLEY 528-JQ AS INTENDED BY THE PUBLICATION THEREOF IN THE PROVINCIAL GAZETTE AND SHOWN IN DETAIL ON PLANS GRP 07/49/1Exp-4Exp.

BUNDEL NR. / FILE NO. 2/1/1/2/3/1-K29(4)

KOÖRDINATE LYS/CO-ORDINATE LIST WG 27° KONST./CONST. Y= +/- 0.00 X= +2 800 000.00

L65	-92556.548	+75255.169	L43	-91435.450	+72007.750	R19	-92357.570	+73600.530
L1	-92622.930	+75197.720	L44	-91404.350	+71971.740	R20	-92325.830	+73547.290
L2	-92653.610	+75109.080	L45	-91398.170	+71947.430	R21	-92298.880	+73486.910
L3	-92659.170	+75013.060	L46	-91396.340	+71896.590	R22	-92189.050	+73171.640
L4	-92657.120	+74941.730	L47	-91223.350	+71417.560	R23	-92186.930	+73118.830
L5	-92647.390	+74854.350	L48	-91193.770	+71380.230	R24	-92188.620	+73093.390
L6	-92639.600	+74811.250	L49	-91185.522	+71356.625	R25	-92146.120	+73054.030
L7	-92627.020	+74757.500	L50	-91184.480	+71309.930	R26	-92093.300	+72968.790
L8	-92560.490	+74505.630	L51	-91056.303	+70955.044	R27	-92042.010	+72873.990
L9	-92534.070	+74466.120	L52	-91026.858	+70902.948	R28	-91958.470	+72739.290
L10	-92527.690	+74441.960	L53	-91014.299	+70897.706	R29	-91895.680	+72644.040
L11	-92531.070	+74394.560	L54	-90986.265	+70820.124	R30	-91884.500	+72599.330
L12	-92512.580	+74328.530	L55	-90991.873	+70806.071	R31	-91868.870	+72580.340
L13	-92454.770	+74120.080	L56	-90980.561	+70745.301	R32	-91866.740	+72578.250
L14	-92388.160	+73911.250	L57	-90790.630	+70219.300	R33	-91840.690	+72557.660

KOÖRDINATE LYS/CO-ORDINATE LIST WG 27° KONST./CONST. Y= +/- 0.00 X= +2 800 000.00								
L15	-92374.550	+73871.450	L169	-92647.909	+75161.545	R34	-91838.650	+72555.500
L16	-92338.040	+73774.330	L168	-92629.197	+75204.708	R35	-91792.660	+72490.040
L17	-92309.820	+73720.860	R153A	-92722.666	+75136.284	R36	-91790.950	+72487.570
L18	-92294.140	+73713.760	R153B	-92653.516	+75123.924	R37	-91761.760	+72444.940
L19	-92260.950	+73636.740	R153C	-92651.876	+75125.151	R38	-91760.660	+72442.460
L20	-92268.980	+73626.320	K6	-92652.039	+75123.660	R39	-91668.150	+72308.190
L21	-92260.060	+73565.580	R1	-92719.230	+75116.160	R40	-91602.260	+72206.630
L22	-92240.840	+73508.700	R2	-92724.730	+75036.220	R41	-91545.424	+72096.162
L23	-92119.770	+73197.650	R3	-92720.090	+74957.040	R42	-91503.180	+71992.040
L24	-92078.270	+73131.530	R4	-92718.700	+74933.340	R43	-91497.450	+71929.250
L25	-92058.380	+73094.380	R5	-92707.170	+74835.680	R44	-91487.100	+71906.500
L26	-92059.790	+73092.630	R6	-92686.960	+74741.650	R45	-91458.141	+71870.269
L27	-92057.810	+73050.280	R7	-92680.160	+74715.930	R46	-91284.480	+71395.480
L28	-92057.060	+73047.440	R8	-92628.860	+74521.900	R47	-91283.260	+71348.880
L29	-91986.380	+72908.050	R9	-92628.940	+74455.660	R48	-91275.000	+71325.344
L30	-91984.910	+72905.440	R10	-92614.950	+74402.750	R49	-91243.740	+71288.530
L31	-91932.130	+72820.280	R11	-92573.490	+74312.430	R50	-91138.650	+70997.600
L32	-91930.550	+72817.730	R12	-92517.970	+74101.080	R51	-91128.047	+70965.284
L33	-91904.840	+72776.010	R13	-92450.830	+73890.550	R52	-91113.181	+70927.062
L34	-91835.880	+72678.830	R14	-92436.890	+73849.770	R53	-91100.587	+70865.691
L35	-91796.860	+72650.370	R15	-92406.260	+73760.080	R54	-91106.771	+70852.342
L36	-91784.950	+72627.510	R16	-92396.930	+73102.660	R55	-91081.431	+70773.438
L37	-91772.480	+72582.690	R17	-92402.350	+73688.730	R55A	-91068.764	+70768.735
L38	-91611.220	+72347.180	R18	-92370.030	+73607.300	R55E	-91038.979	+70715.699
L39	-91541.411	+72241.235				R56	-91024.250	+70677.740
L40	-91484.637	+72124.340				R57	-90864.250	+70241.480

NOTICE 391 OF 2009**PROCLAMATION OF AN ACCESS ROAD IN CONNECTION WITH THE GAUTRAIN RAPID RAIL LINK BETWEEN PRETORIA, JOHANNESBURG AND THE O R TAMBO INTERNATIONAL AIRPORT**

In terms of section 13(1) of the Gauteng Transport Infrastructure Act, 2001 (Act No. 8 of 2001) the MEC hereby proclaims that an access road with varying widths, exists on the Remainder of Portion 170 and Portion 364 of the farm Pretoria Town and Townlands 351-JR, district Pretoria as indicated on the accompanying sketch plan, for the public purpose of implementing the Gautrain Rapid Rail Link project between Pretoria, Johannesburg and the O R Tambo International Airport.

In terms of section 23(6) of the aforementioned act it is hereby declared that plan GRP 03/38/38-Exp which indicates the land encroached upon by the access road in detail, is available for inspection at the office of the Department of Public Transport, Roads and Works, 41 Simmonds Street, Sage Life Building, Johannesburg during office hours.

MEC Resolution 021 of 20 November 2008

Reference 2/1/c/8/P/1a

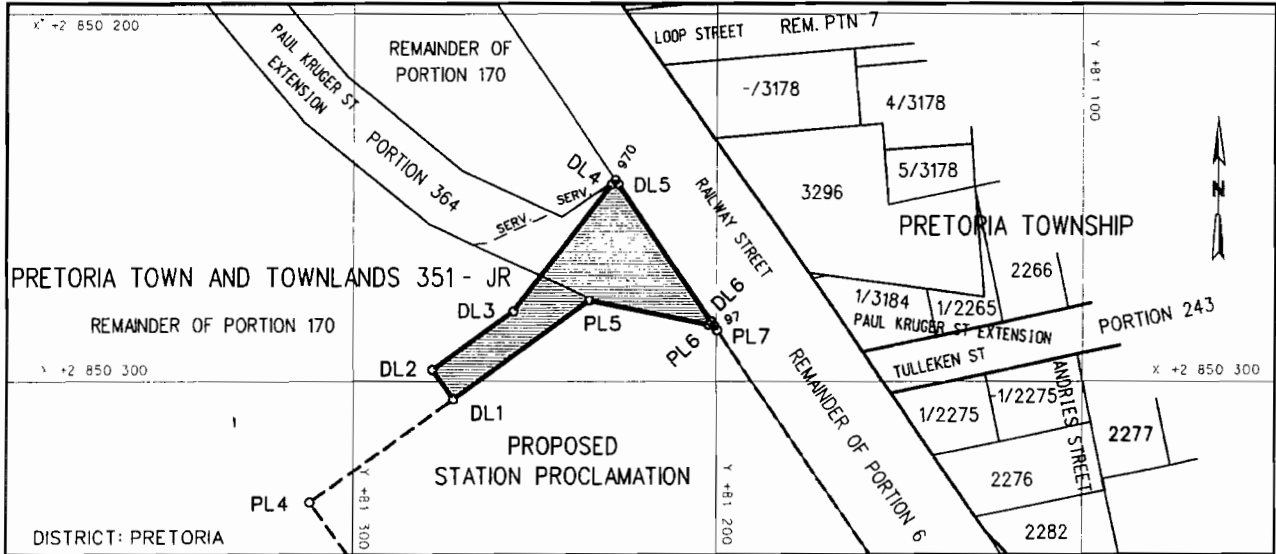
KENNISGEWING 391 VAN 2009**PROKLAMASIE VAN 'N TOEGANGSPAD IN VERBAND MET DIE GAUTREIN SNELSPoorVERBINDING-PROJEK TUSSEN PRETORIA, JOHANNESBURG EN DIE O R TAMBO INTERNASIONALE LUGHAWA**

Ingevolge artikel 13(1) van die Gauteng Transport Infrastructure Act, 2001 (Act No. 8 of 2001) proklameer die LUR hiermee dat 'n toegangspad, met wisselende breedtes, bestaan op die Restant van Gedeelte 170 en Gedeelte 364 van die plaas Pretoria Town en Townlands 351-JR, distrik Pretoria, soos op bygaande sketsplan aangetoon, vir die openbare doel om die Gautrein Snelspoorverbinding-projek tussen Pretoria, Johannesburg en die O R Tambo Internasionale Lughawe te implementeer.

Ingevolge artikel 23(6) van voormelde wet word hiermee verklaar dat plan GRP 03/38/38-Exp wat die grond wat deur die toegangspad in beslag geneem is in besonderhede aantoon, by die Plankantoor van die Departement van Openbare Vervoer, Paaie en Werke, Eerste Vloer, Suidtoring, Sage Life Gebou, Simmondsstraat 41, Johannesburg deur enige belanghebbende persoon ter insae beskikbaar is.

LUR Resolusie 021 van 20 November 2008

Verwysing 2/1/c/8/P/1a



REFERENCE / VERWYSINGS

GEPROKLAAMEERDE TOEGANGSPAD
PROCLAIMED ACCESS ROAD



DIE FIGUUR / THE FIGURE DL1 - DL4, 970, DL5, DL6, 97, PL6, PL5, DL1

VERTEENWOORDIG DIE PROKLAMASIE VAN DIE TOEGANGSPAD OOR DIE RESTANT VAN GEDEELTE 170 EN GEDEELTE 364 VAN DIE PLAAS PRETORIA TOWN AND TOWNLANDS 351-JR SOOS BEDOEL BY DIE AFKONDIGING DAARVAN IN DIE PROVINSIALE KOERANT EN IN DETAIL GETOON OP PLAN GRP 03/38/38Exp.

REPRESENTS THE PROCLAMATION OF THE ACCESS ROAD OVER THE REMAINDER OF PORTION 170 AND PORTION 364 OF THE FARM PRETORIA TOWN AND TOWNLANDS 351-JR AS INTENDED BY THE PUBLICATION THEREOF IN THE PROVINCIAL GAZETTE AND ~~AND~~ SHOWN IN DETAIL ON PLAN GRP 03/38/38Exp.

BUNDEL NR. / FILE NO. 2/1/7/8-GAUTRAIN

KOÖRDINATE LYS/CO-ORDINATE LIST WG 29° KONST./CONST. Y= +/- 0.00 X= +2 800 000.00

PL5	+81235.118	+50278.109	DL2	+81278.147	+50296.848	DL6	+81201.419	+50283.764
PL6	+81202.041	+50284.709	DL3	+81256.140	+50281.167			
			DL4	+81228.909	+50246.252	970	+81227.986	+50245.069
DL1	+81272.486	+50304.793	DL5	+81227.137	+50246.306	97	+81200.570	+50285.001

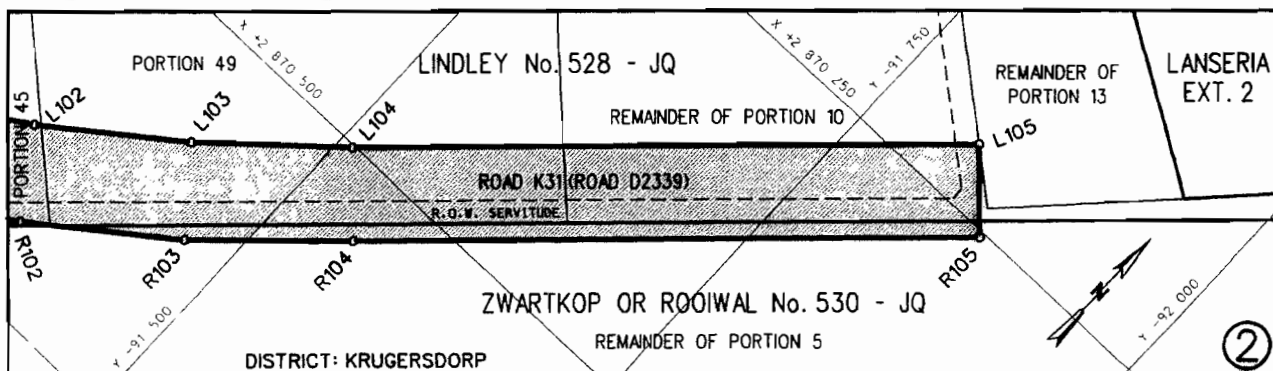
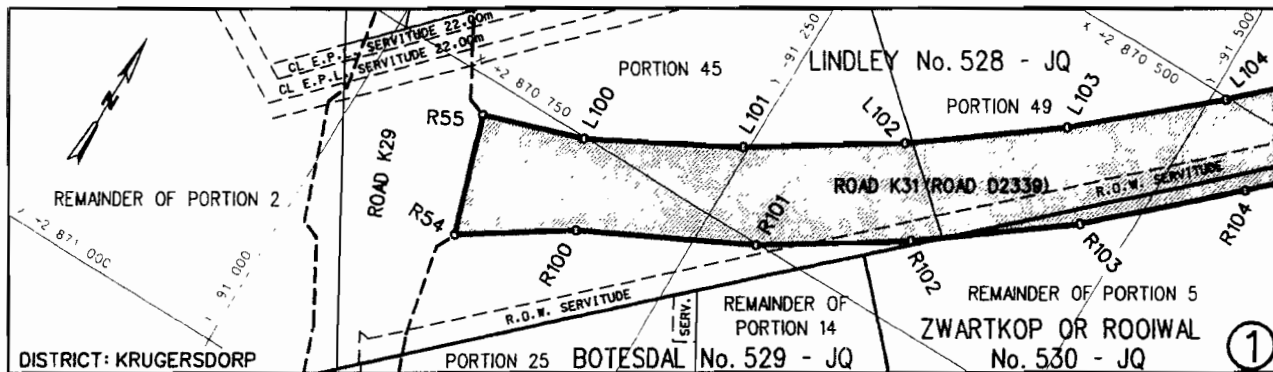
NOTICE 392 OF 2009**PROCLAMATION OF A PORTION OF PROVINCIAL ROAD K31 DISTRICT KRUGERSDORP**

In terms of section 11(1)(b) of the Gauteng Transport Infrastructure Act, 2001 (Act No. 8 of 2001) the MEC hereby proclaims the portion concerned of Provincial Road K31 over Portions 45, 49 and the remainder of Portion 10 of the farm Lindley 528 JQ and the remainder of Portion 5 of the farm Zwartkop alias Rooiwal 530 JQ as indicated on the accompanying sketch plan.

In terms of section 23 (6) of the aforementioned Act, it is hereby declared that boundary beacons demarcating the land encroached upon by the proclamation of the road, have been erected on the land and the plans GRP 07/49/7 EXP which indicate the said encroachment of the land, are available for inspection by any interested person at the office of the Department of Public Transport, Roads and Works, 41 Simmonds Street, Sage Life Building, Johannesburg.

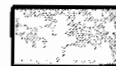
Reference: 2/1/1/2/3/1 – K29

MEC Resolution: 001
DATE: 26 January 09



REFERENCE / VERWYSINGS

GEPROKLAAMEERDE PAD
PROCLAIMED ROAD



DIE FIGUUR R55, L100 - L105, R105 - R100, R54, R55.
THE FIGURE .

VERTEENWOORDIG DIE PROKLAMASIE VAN DIE BETROKKE GEDEELTE VAN PROVINSIALE PAD K31 OOR GEDEELTES 45, 49 EN DIE RESTANT VAN GEDEELTE 10 VAN DIE PLAAS LINDLEY 528-JQ EN DIE RESTANT VAN GEDEELTE 5 VAN DIE PLAAS ZWARTKOP ALIAS ROOIWAL 530-JQ SOOS BEDOEL BY DIE AFKONDIGING DAARVAN IN DIE PROVINSIALE KOERANT EN IN DETAIL GETOON OP PLAN GRP 07/49/7Exp.

REPRESENTS THE PROCLAMATION OF THE PORTION CONCERNED OF PROVINCIAL ROAD K31 OVER PORTIONS 45, 49 AND THE REMAINDER OF PORTION 10 OF THE FARM LINDLEY 528-JQ AND THE REMAINDER OF PORTION 5 OF THE FARM ZWARTKOP ALIAS ROOIWAL 530-JQ AS INTENDED BY THE PUBLICATION THEREOF IN THE PROVINCIAL GAZETTE AND SHOWN IN DETAIL ON PLAN GRP 07/49/7Exp.

BUNDEL NR. / FILE NO. 2/1/1/2/3/1-K29(4)

KOÖRDINATE LYS/CO-ORDINATE LIST WG 29° KONST./CONST. Y= +/- 0.00 X= +2 800 000.00

R54	-91106.771	+70852.342	L103	-91426.904	+70573.949	R102	-91376.458	+70694.200
R55	-91081.431	+70773.438	L104	-91509.745	+70501.545	R103	-91468.448	+70625.235
L100	-91149.263	+70751.300	L105	-91821.327	+70207.922	R104	-91552.951	+70547.395
L101	-91246.156	+70699.179	R100	-91176.569	+70806.962	R105	-91864.534	+70253.771
L102	-91338.874	+70639.946	R101	-91288.011	+70751.101			