

***THE PROVINCE OF
GAUTENG***

***DIE PROVINSIE
GAUTENG***

**Provincial Gazette Extraordinary
Buitengewone Provinsiale Koerant**

Vol. 16

**PRETORIA, 1 JULY 2010
JULIE**

No. 127

IMPORTANT NOTICE

The Government Printing Works will not be held responsible for faxed documents not received due to errors on the fax machine or faxes received which are unclear or incomplete. Please be advised that an "OK" slip, received from a fax machine, will not be accepted as proof that documents were received by the GPW for printing. If documents are faxed to the GPW it will be the sender's responsibility to phone and confirm that the documents were received in good order.

Furthermore the Government Printing Works will also not be held responsible for cancellations and amendments which have not been done on original documents received from clients.

CONTENTS • INHOUD*No.**Page
No. Gazette
 No.***GENERAL NOTICE**

1865 Gauteng Transport Infrastructure Act (8/2001):Proclamation of a portion of Provincial Road K60: District Randburg. 3 127

GENERAL NOTICE

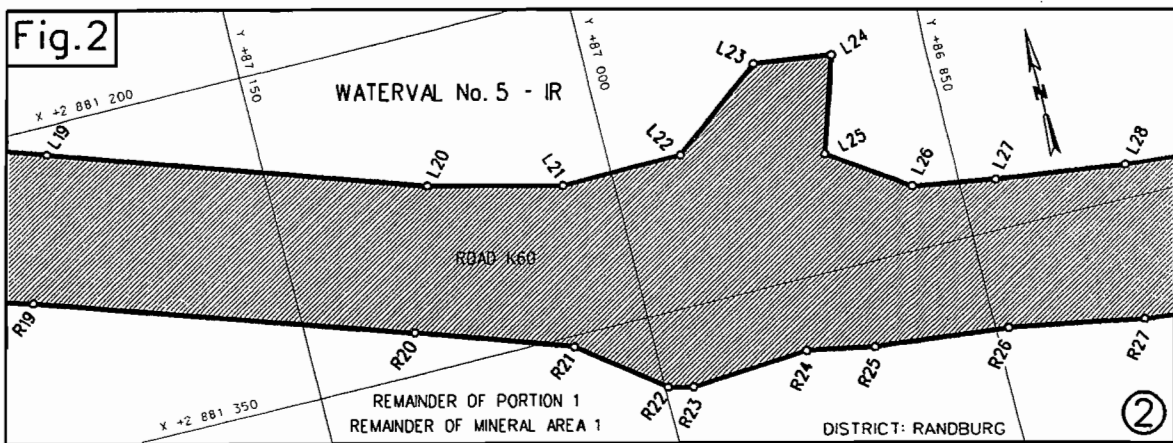
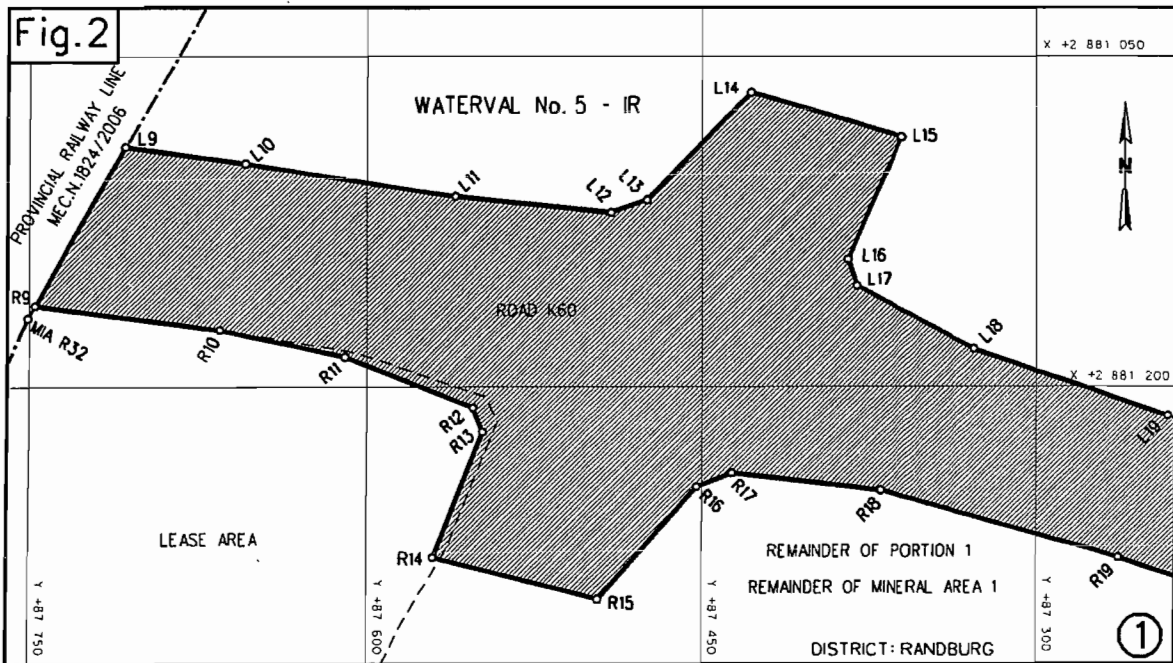
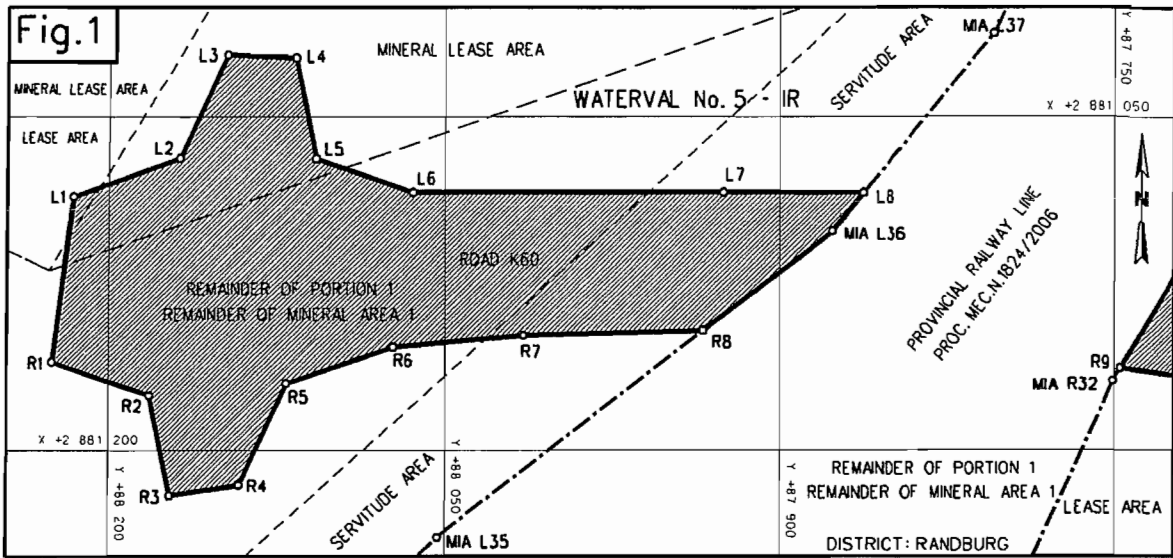
NOTICE 1865 OF 2010

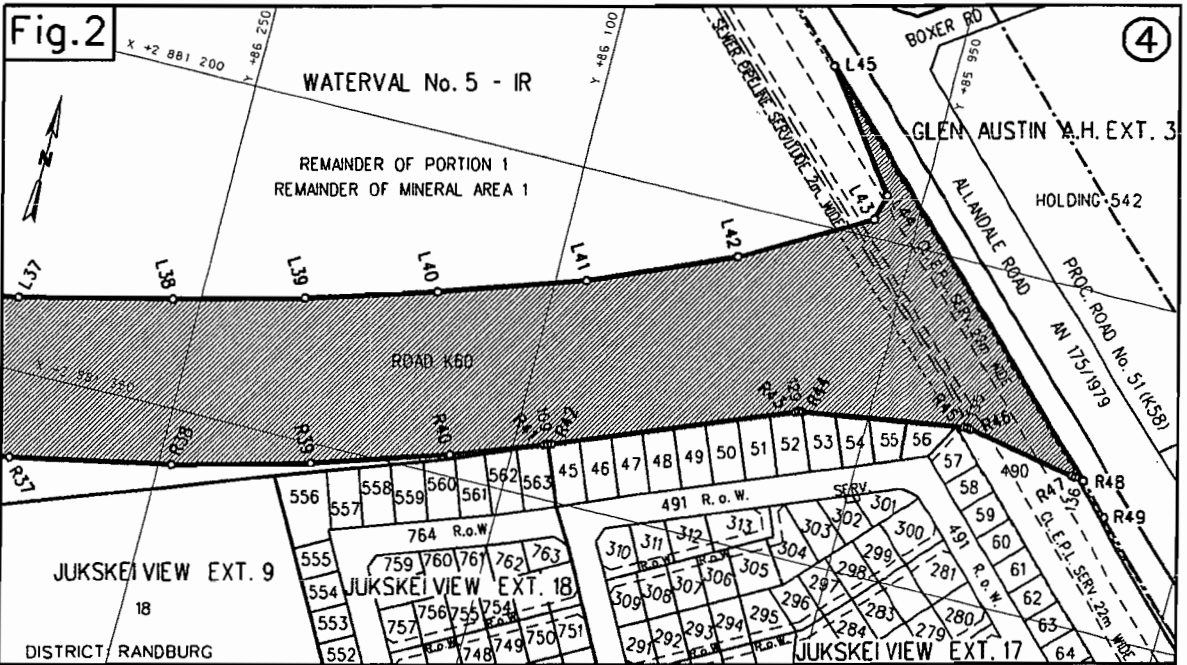
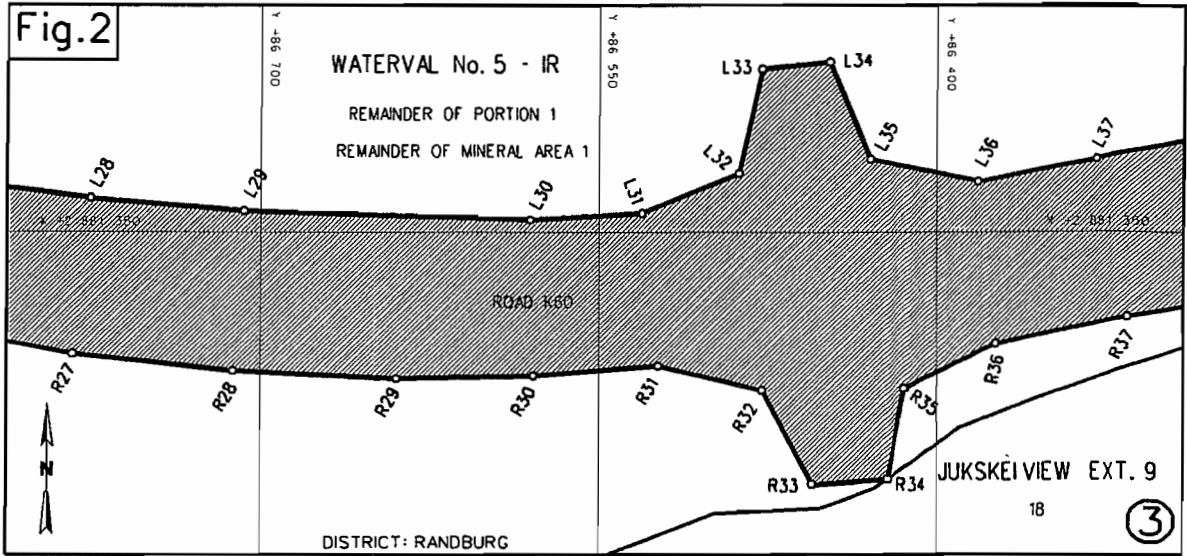
PROCLAMATION OF A PORTION OF PROVINCIAL ROAD K60: DISTRICT RANDBURG

In terms of section 11(1)(b) of the Gauteng Transport Infrastructure Act, 2001 (Act No. 8 of 2001), the MEC responsible for provincial roads, hereby proclaims that a portion of provincial road K60, with varying widths, exists on the land as described and indicated by the figures on the accompanying sketch plans.

In terms of section 23(6) of the aforementioned act it is hereby stated that plans GRP 09/05/01 Exp – 03 Exp which indicate the land affected by the provincial road in detail, are available for inspection at the office of the Department of Roads and Transport, First Floor, South Tower, Sage Life Building, 41 Simmonds Street, Johannesburg, during office hours.

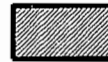
Reference: 2/1/7/8-Gautrain





REFERENCE

PROCLAIMED ROAD



THE FIGURES : (1) L1 - L8, MIA L36, R8 - R1, L1.
(2) L9 - L45, R49 - R44, 129, R43, R42, 109, R41 - R9, L9.

REPRESENT THE PROCLAMATION OF THE PORTION CONCERNED OF PROVINCIAL ROAD K60 OVER THE REMAINDER OF PORTION 1 OF THE FARM WATERVAL 5-IR AS INTENDED BY THE PUBLICATION THEREOF IN THE PROVINCIAL GAZETTE AND SHOWN IN DETAIL ON PLANS GRP 09/05/01Exp-03Exp.

FILE NO. 2/17/8-GAUTRAIN

