

*THE PROVINCE OF  
GAUTENG*

*DIE PROVINSIE  
GAUTENG*

**Provincial Gazette Extraordinary  
Buitengewone Provinsiale Koerant**

**Vol. 16**

**PRETORIA, 16 FEBRUARY 2010  
FEBRUARIE**

**No. 19**

**IMPORTANT NOTICE**

The Government Printing Works will not be held responsible for faxed documents not received due to errors on the fax machine or faxes received which are unclear or incomplete. Please be advised that an "OK" slip, received from a fax machine, will not be accepted as proof that documents were received by the GPW for printing. If documents are faxed to the GPW it will be the sender's responsibility to phone and confirm that the documents were received in good order.

Furthermore the Government Printing Works will also not be held responsible for cancellations and amendments which have not been done on original documents received from clients.

**CONTENTS • INHOUD**

<i>No.</i>		<i>Page No.</i>	<i>Gazette No.</i>
<b>GENERAL NOTICES</b>			
441	Gauteng Transport Infrastructure Act (8/2001): Proclamation of a provincial railway line in connection with the Gautrain Rapid Rail Link between Pretoria, Johannesburg and the OR Tambo International Airport.....	3	19
442	do.: do .....	8	19

---

## GENERAL NOTICES

---

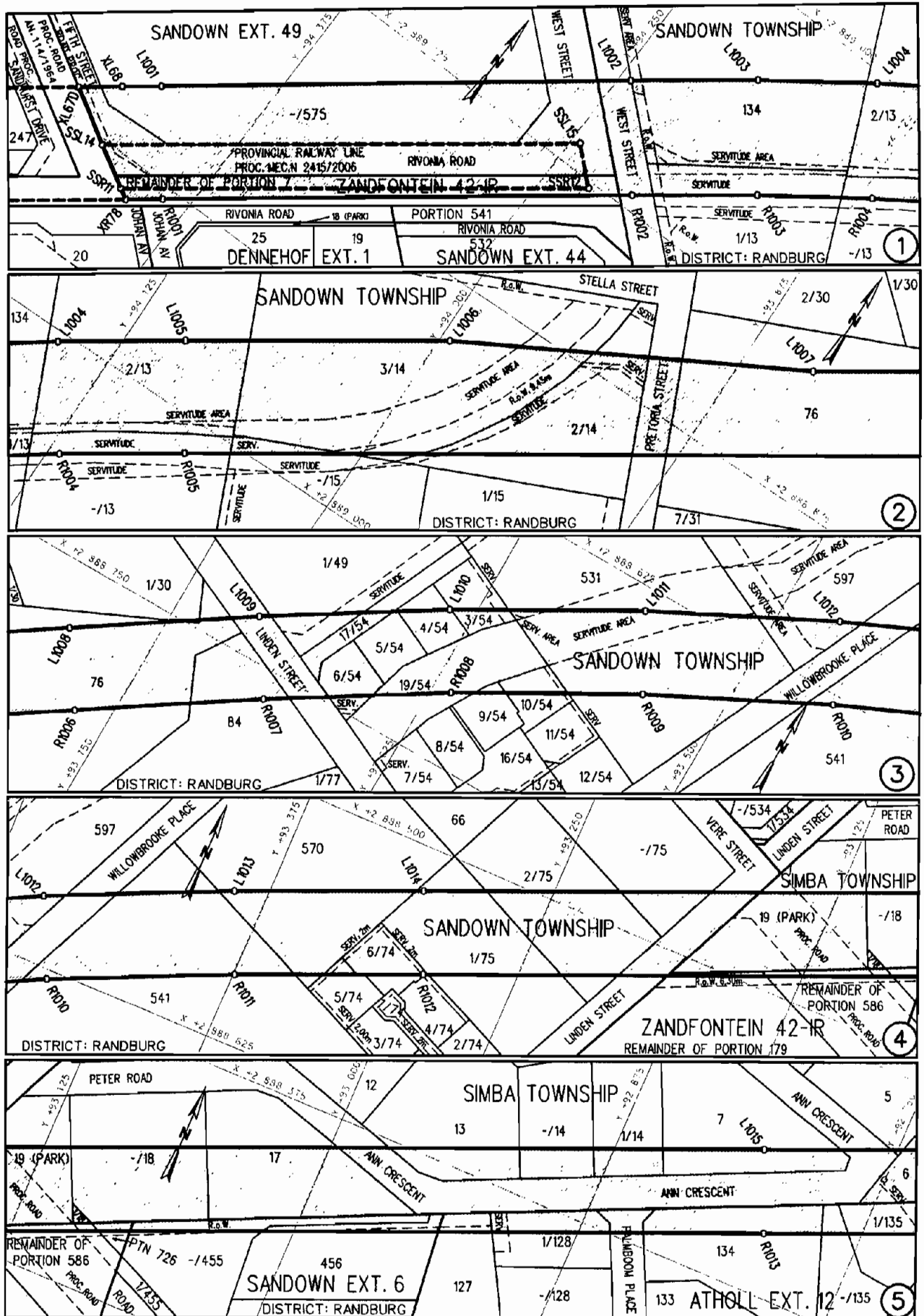
### NOTICE 441 OF 2010

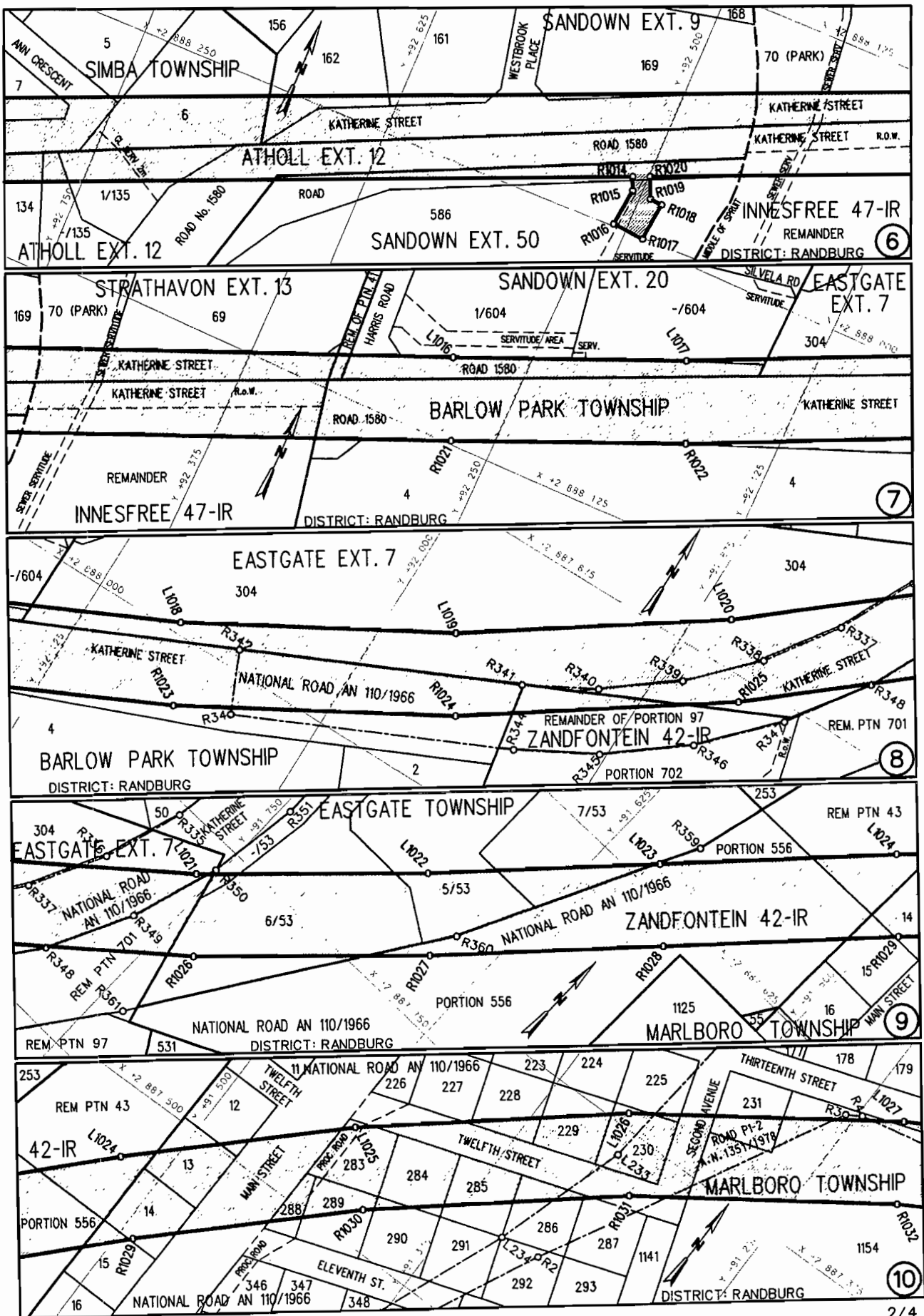
#### PROCLAMATION OF A PROVINCIAL RAILWAY LINE IN CONNECTION WITH THE GAUTRAIN RAPID RAIL LINK BETWEEN PRETORIA, JOHANNESBURG AND THE O R TAMBO INTERNATIONAL AIRPORT

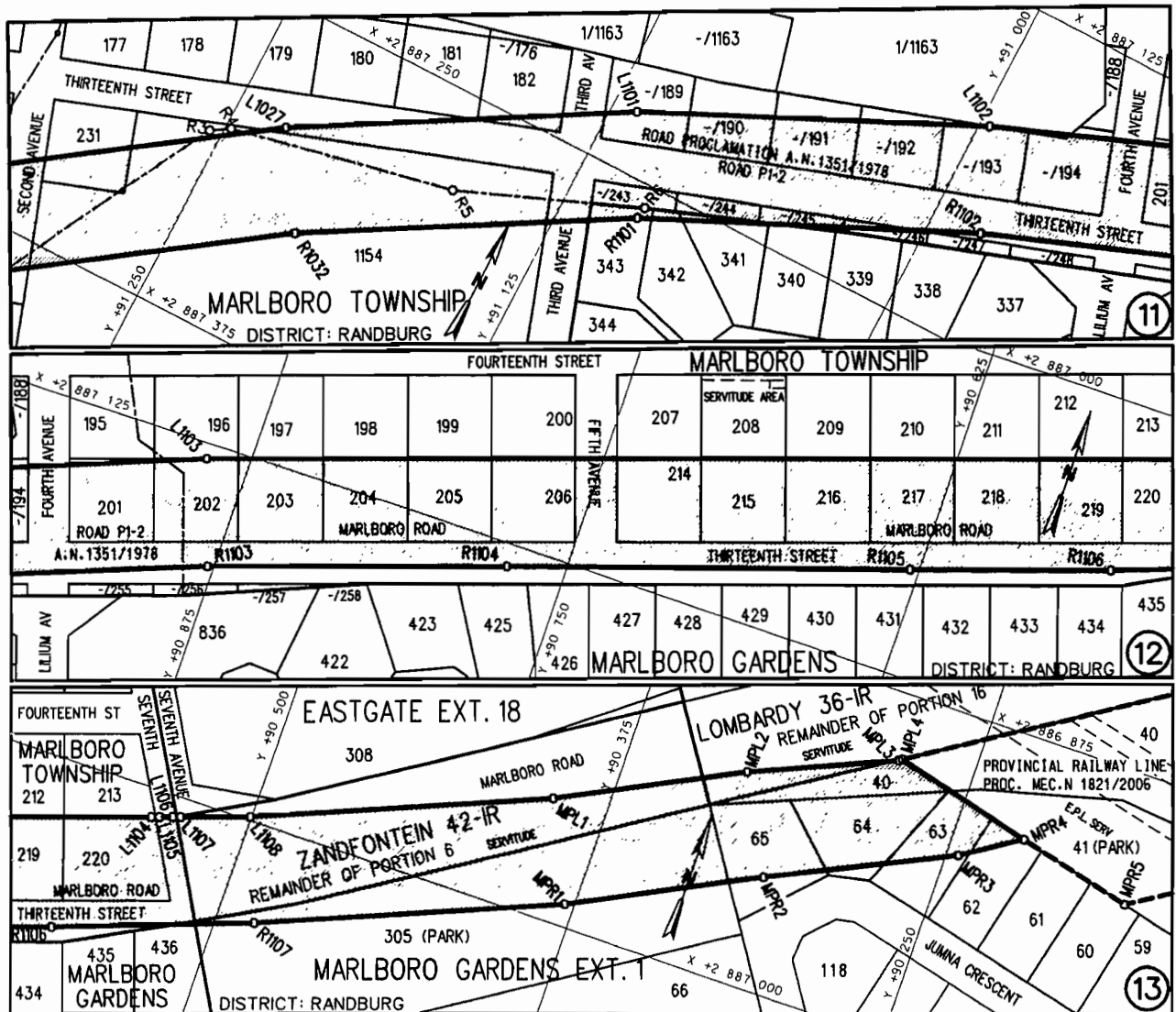
In terms of section 11(1)(b) of the Gauteng Transport Infrastructure Act, 2001 (Act No 8 of 2001), the MEC responsible for provincial roads, hereby proclaims that a provincial railway line at varying depths exists in the tunnel servitude below the land as described and indicated by the figures on the accompanying sketch plans, which show the horizontal alignment of the railway line on the land.

In terms of section 23(6) of the aforementioned act it is hereby stated that plans GRP 03/38/06A Exp, 07 Exp – 08 Exp and GRP 03/38/06AV, 07V – 08V which respectively indicate the horizontal alignment of the railway line on the land, as well as the vertical alignment of the railway line at varying depths in the tunnel servitudes below the land in detail, are available for inspection at the office of the Department of Roads and Transport, First Floor, South Tower, Sage Life Building, 41 Simmonds Street, Johannesburg, during office hours.

Reference: 2/1/7/8 Gautrain

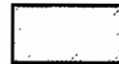






**REFERENCE / VERWYSINGS**

PROCLAIMED RAILWAY LINE IN TUNNEL SERVITUDE  
 GEPROKLAAMEERDE SPOORLYN IN TONNEL SERWITUUT



THE FIGURE : XL67D, XL68, L1001 - L1027, L1101 - L1108MPL1 - MPL4, MPR4 - MPR1, R1107 - R1101,  
 DIE FIGUUR : R1032 - R1001, XR78, SSR11, SSL14, XL67D.

REPRESENTS THE PROCLAMATION OF THE PORTION CONCERNED OF THE RAILWAY LINE AT VARYING DEPTHS IN THE TUNNEL SERVITUDE BELOW THE REMAINDER OF ERF 575, PORTIONS OF FIFTH STREET, WEST STREET AND RIVONIA ROAD IN SANDOWN EXTENSION 49, THE REMAINDER OF PORTION 7 OF THE FARM ZANDFONTEIN 42-IR, LOT 134, PORTIONS 1, 2, THE REMAINDER OF LOT 13, PORTIONS 2, 3 OF LOT 14, THE REMAINDER OF LOT 15, LOT 76, LOT 84, PORTION 1 OF LOT 30, PORTION 1 OF LOT 49, PORTIONS 3-6, 9, 10, 17, 19 OF LOT 54, LOTS 531, 597, 541, 570, PORTIONS 5, 6, OF LOT 74, PORTIONS 1, 2, THE REMAINDER OF LOT 75, PORTIONS OF WEST STREET, PRETORIA STREET, LINDEN STREET AND WILLOWBROOK PLACE IN SANDOWN, ERF 19 (PARK), THE REMAINDER OF ERF 18, ERVEN 17, 13, PORTION 1, THE REMAINDER OF ERF 14, ERVEN 7-5 AND A PORTION OF ANN CRESCENT IN SIMBA, THE REMAINDERS OF PORTIONS 179, 586 AND PORTION 726 OF THE FARM ZANDFONTEIN 42-IR, THE REMAINDER OF ERF 455 AND ERF 456 IN SANDOWN EXTENSION 6, ERF 127, PORTION 1 OF ERF 128, ERF 134, PORTION 1, THE REMAINDER OF ERF 135, PORTIONS OF PALMBOOM PLACE AND KATHERINE STREET (ROAD 1580) IN ATHOLL EXTENSION 12, ERF 586 AND A PORTION OF KATHERINE STREET (ROAD 1580) IN SANDOWN EXTENSION 50, ERVEN 162, 161, 169, PORTIONS OF KATHERINE STREET AND WESTBROOKE PLACE IN SANDOWN EXTENSION 9, ERVEN 70 (PARK), 69 AND A PORTION OF KATHERINE STREET (ROAD 1580) IN STRATHAVON EXTENSION 13, THE REMAINDER OF THE FARM INNESFREE 47-IR, ERF 4 AND A PORTION OF KATHERINE STREET (ROAD 1580) IN BARLOW PARK, PORTION 1, THE REMAINDER OF ERF 604 AND A PORTION OF KATHERINE STREET (ROAD 1580) IN SANDOWN EXTENSION 20, ERF 304 AND A PORTION OF KATHERINE STREET IN EASTGATE EXTENSION 7,

THE REMAINDERS OF PORTIONS 41, 701, PORTION 556 AND THE REMAINDER OF PORTION 43 OF THE FARM ZANDFONTEIN 42-IR, PORTIONS 5-7 AND THE REMAINDER OF ERF 53 IN EASTGATE, LOTS 12-15, 8, 3, 9, 4, 290, 285-287, 227-230, 225, 231, 1154, 182, THE REMAINDERS OF LOTS 189-194, 243-246, LOTS 201-206, 214-220, PORTIONS OF MAIN STREET, TWELFTH STREET, SECOND AVENUE, THIRTEENTH STREET, THIRD AVENUE, FOURTH AVENUE, FIFTH AVENUE, AND SEVENTH AVENUE IN MARLBORO, ERVEN 343-340 AND 436 IN MARLBORO GARDENS, ERVEN 305 (PARK), 65-62 AND 40 IN MARLBORO GARDENS EXTENSION 1, THE REMAINDER OF PORTION 6 OF THE FARM ZANDFONTEIN 42-IR, THE REMAINDER OF PORTION 16 OF THE FARM LOMBARDY 36-IR AS INTENDED BY THE PUBLICATION THEREOF IN THE PROVINCIAL GAZETTE OF WHICH THE HORIZONTAL AND VERTICAL ALIGNMENT ARE SHOWN IN DETAIL ON PLANS GRP 03/38/06AExp, 07EXP - 08Exp AND 06AV, 07V - 08V RESPECTIVELY.

BUNDEL NR. / FILE NO. 2/1/7/8-GAUTRAIN

KOÖRDINATE LYS/CO-ORDINATE LIST WG 29° KONST./CONST. Y= +/- 0.00 X= +2 800 000.00

XL67D	+94451.507	+89237.637	L1102	+90996.274	+87171.688	R1016	+92506.461	+88248.829
XL68	+94435.173	+89224.815	L1103	+90890.706	+87130.810	R1017	+92491.018	+88250.423
L1001	+94420.431	+89213.371	L1104	+90535.379	+87010.728	R1018	+92489.079	+88231.458
L1002	+94244.714	+89075.443	L1105	+90532.540	+87009.757	R1019	+92495.149	+88230.883
L1003	+94196.734	+89038.298	L1106	+90527.808	+87008.120	R1020	+92499.447	+88220.758
L1004	+94150.344	+89004.700	L1107	+90524.971	+87007.143	R1021	+92269.511	+88123.174
L1005	+94100.088	+88970.696	L1108	+90500.329	+86998.687	R1022	+92166.436	+88078.687
L1006	+93995.513	+88900.956	MPL1	+90395.809	+86955.575	R1023	+92064.227	+88030.078
L1007	+93843.609	+88816.482	MPL2	+90330.152	+86922.427	R1024	+91946.482	+87962.988
L1008	+93788.662	+88779.838	MPL3	+90279.736	+86900.528	R1025	+91835.024	+87885.900
L1009	+93713.453	+88730.099	MPL4	+90277.094	+86899.125	R1026	+91730.701	+87799.399
L1010	+93636.624	+88681.800	SSL14	+94425.781	+89252.457	R1027	+91649.151	+87720.913
L1011	+93555.789	+88635.691	XR78	+94400.974	+89266.747	R1028	+91571.160	+87640.169
L1012	+93472.867	+88593.451	R1001	+94387.089	+89255.848	R1029	+91492.993	+87559.237
L1013	+93390.320	+88555.764	R1002	+94211.372	+89117.920	R1030	+91413.009	+87482.293
L1014	+93307.447	+88520.217	R1003	+94164.248	+89081.433	R1031	+91314.164	+87400.264
L1015	+92809.103	+88308.721	R1004	+94119.491	+89049.018	R1032	+91208.683	+87326.961
L1016	+92285.137	+88086.352	R1005	+94070.127	+89015.622	R1101	+91097.335	+87262.921
L1017	+92182.732	+88042.157	R1006	+93766.468	+88813.116	R1102	+90980.931	+87208.607
L1018	+92082.497	+87994.494	R1007	+93691.645	+88763.631	R1103	+90877.187	+87169.175
L1019	+91967.780	+87929.130	R1008	+93615.990	+88716.068	R1104	+90771.549	+87133.400
L1020	+91859.190	+87854.024	R1009	+93536.797	+88670.895	R1105	+90628.365	+87085.881
L1021	+91757.549	+87769.749	R1010	+93455.559	+88629.513	R1106	+90557.126	+87061.915
L1022	+91677.581	+87692.777	R1011	+93374.268	+88592.402	R1107	+90485.885	+87035.987
L1023	+91600.098	+87612.555	R1012	+93291.821	+88557.039	MPR1	+90378.523	+86991.647
L1024	+91521.421	+87531.097	R1013	+92793.477	+88345.543	MPR2	+90311.392	+86957.755
L1025	+91439.843	+87452.629	R1014	+92507.202	+88224.049	MPR3	+90245.451	+86926.454
L1026	+91338.372	+87368.420	R1015	+92504.545	+88230.308	MPR4	+90224.307	+86912.898
L1027	+91230.087	+87293.169				SSR11	+94405.917	+89263.900
L1101	+91115.779	+87227.427						

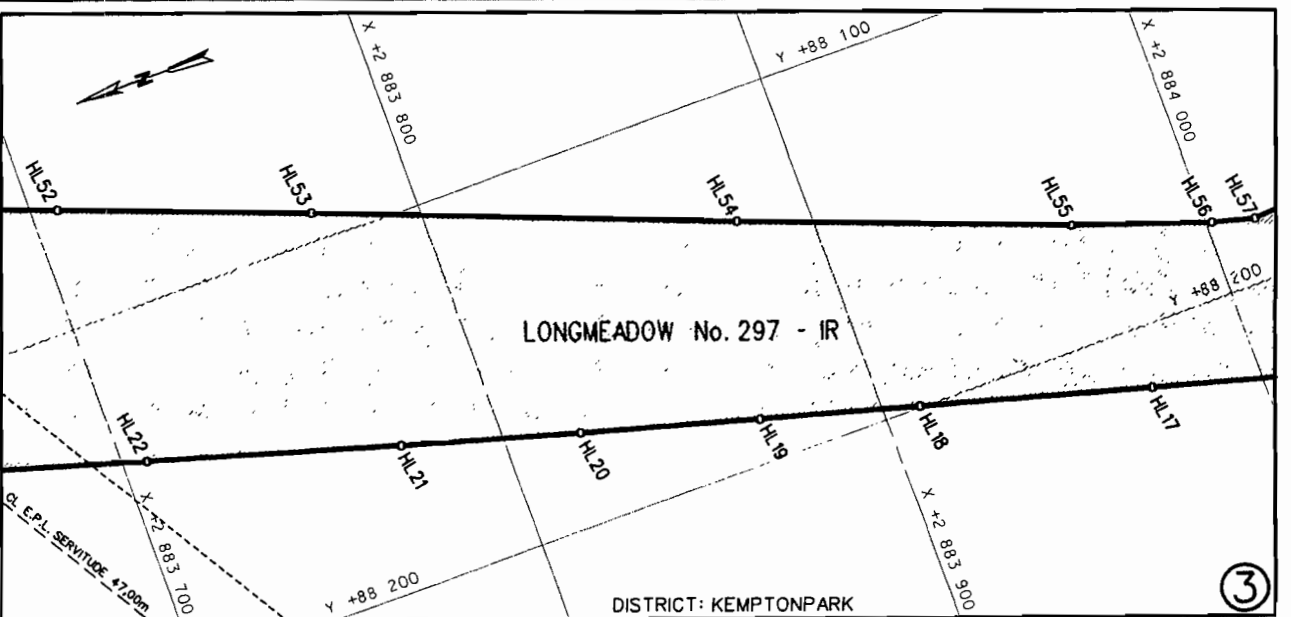
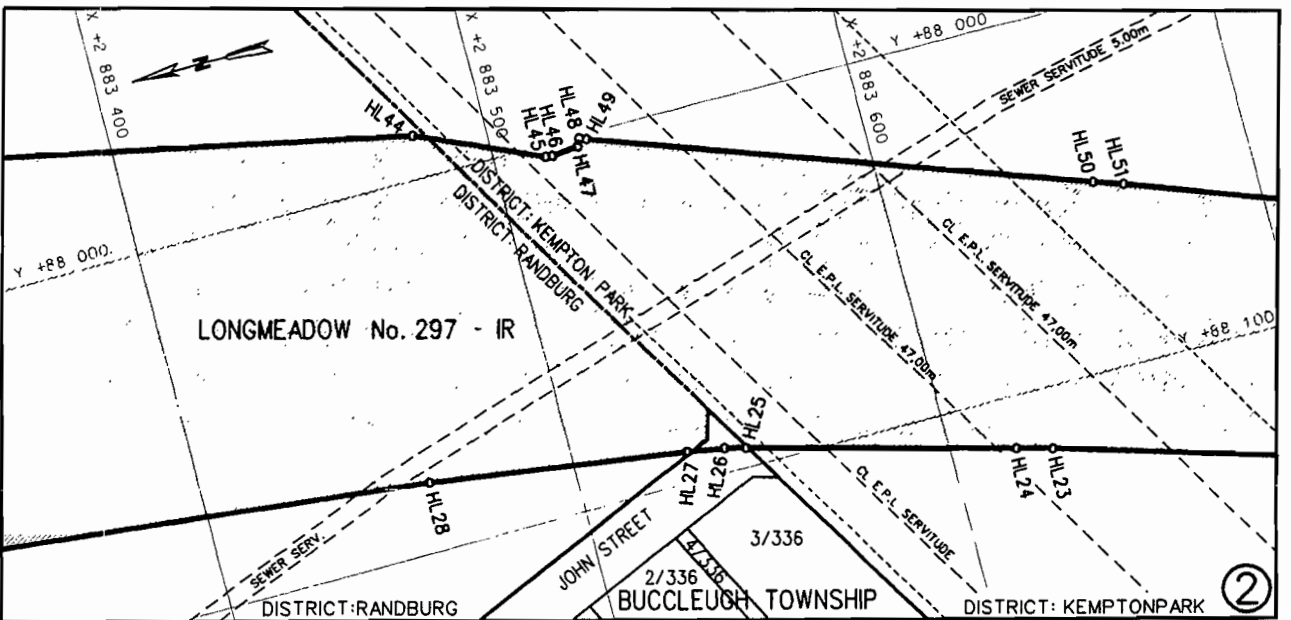
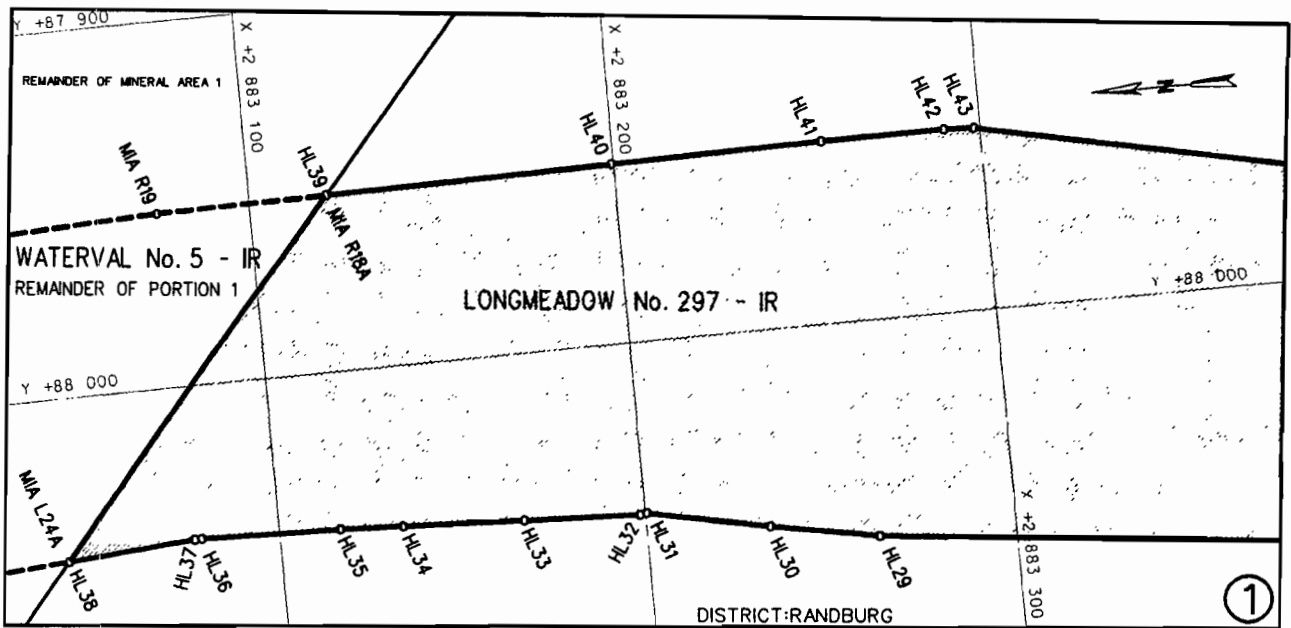
**NOTICE 442 OF 2010****PROCLAMATION OF A PROVINCIAL RAILWAY LINE IN CONNECTION WITH THE GAUTRAIN RAPID RAIL LINK BETWEEN PRETORIA, JOHANNESBURG AND THE O R TAMBO INTERNATIONAL AIRPORT**

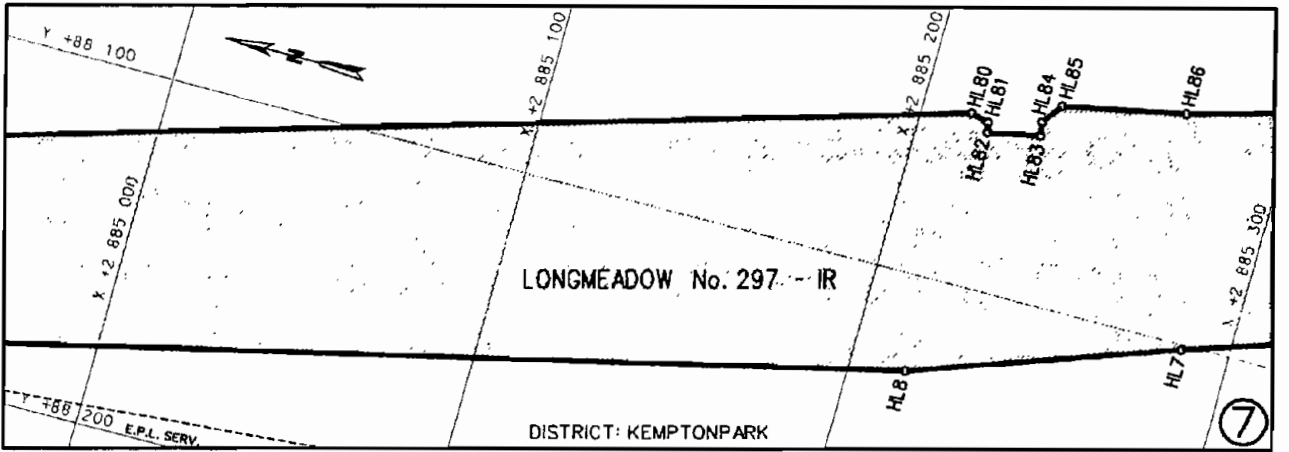
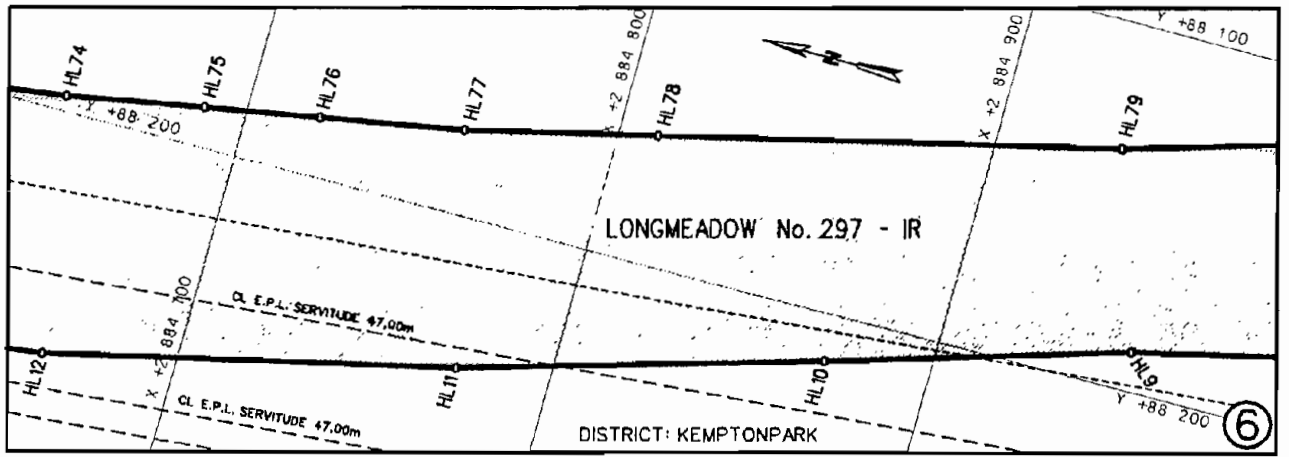
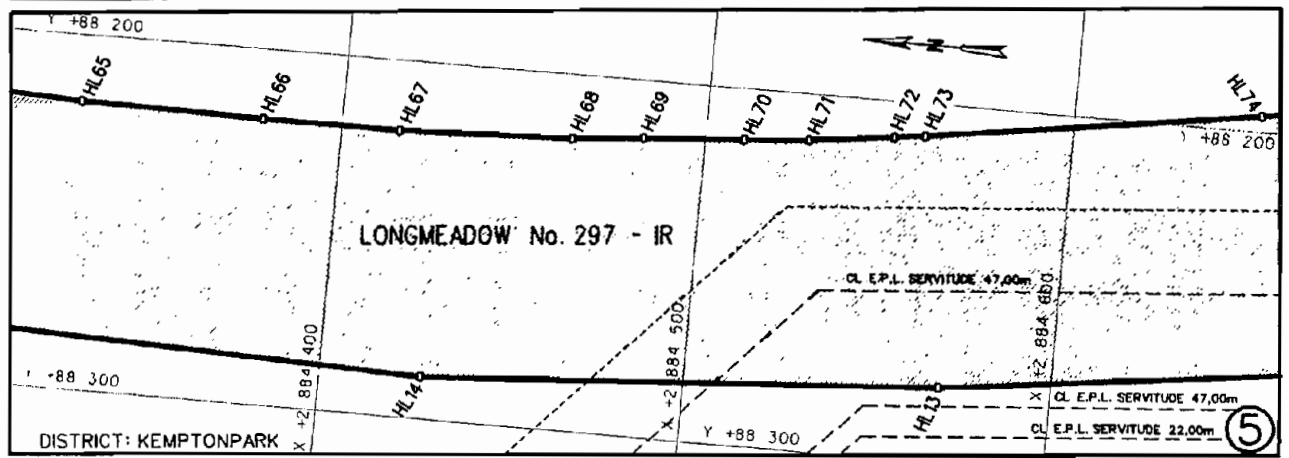
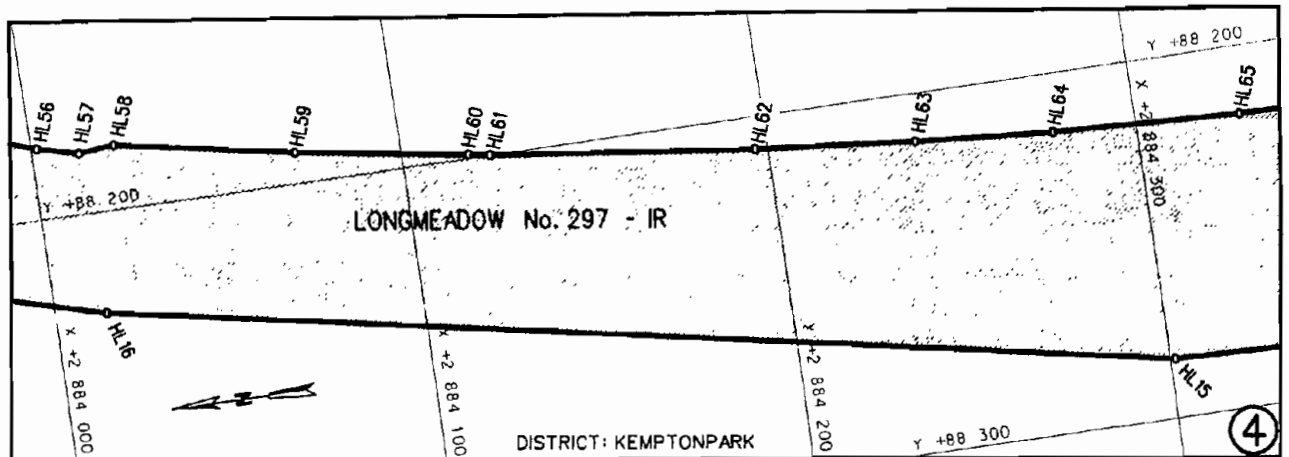
In terms of section 11(1)(b) of the Gauteng Transport Infrastructure Act, 2001 (Act No 8 of 2001), the MEC responsible for provincial roads, hereby proclaims that a provincial railway line with varying widths exists on the land as described and indicated by the figures on the accompanying sketch plans.

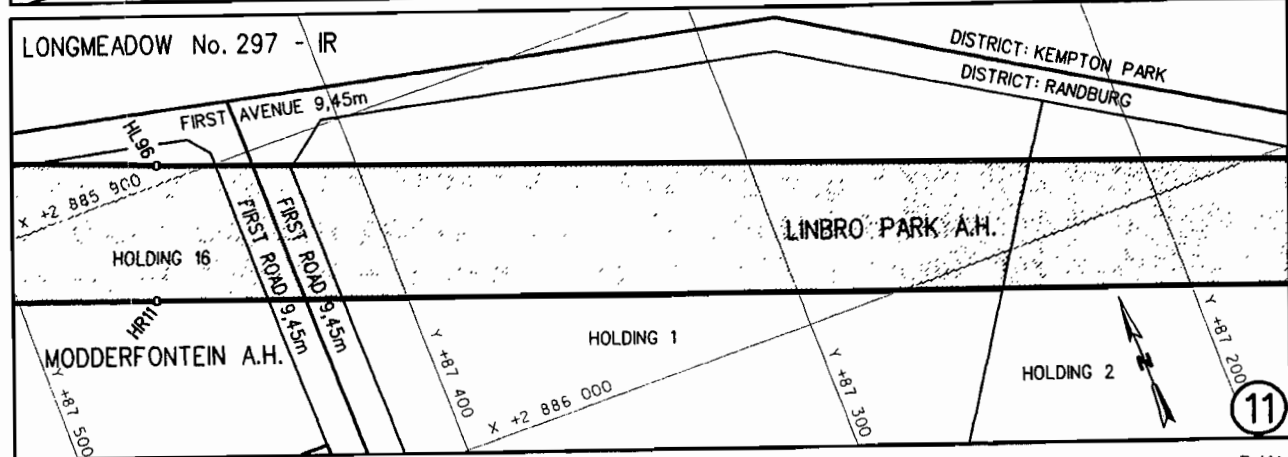
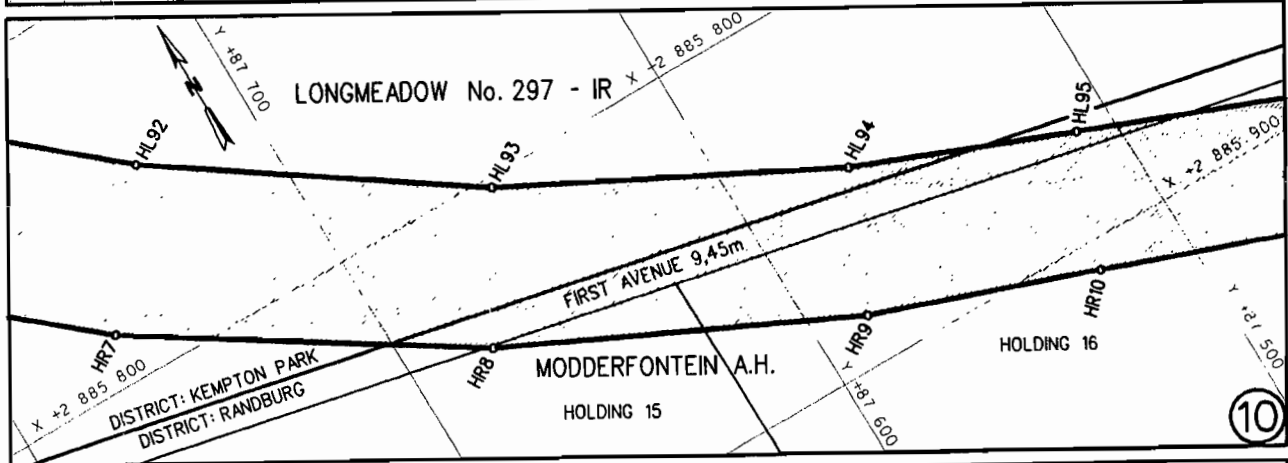
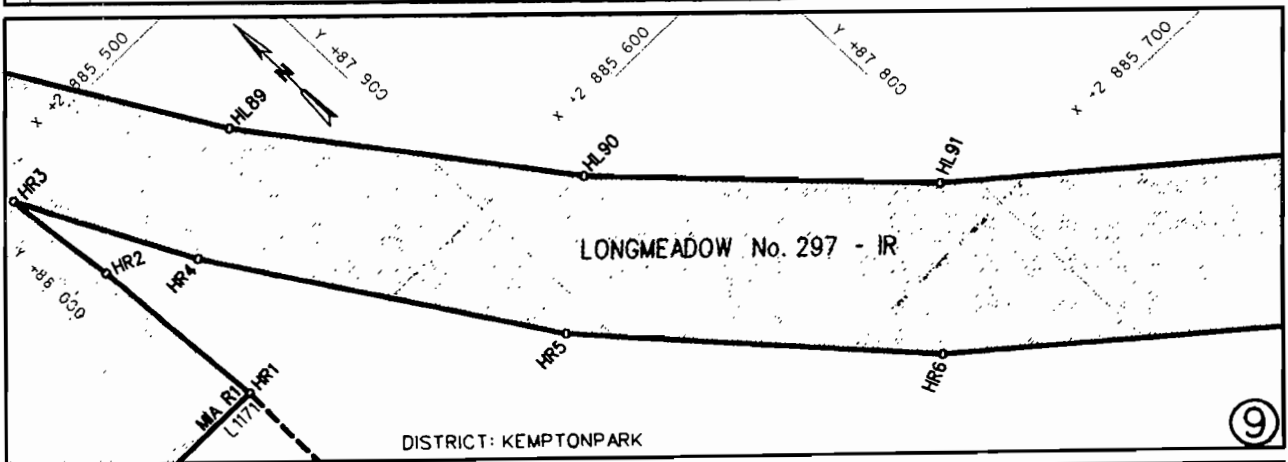
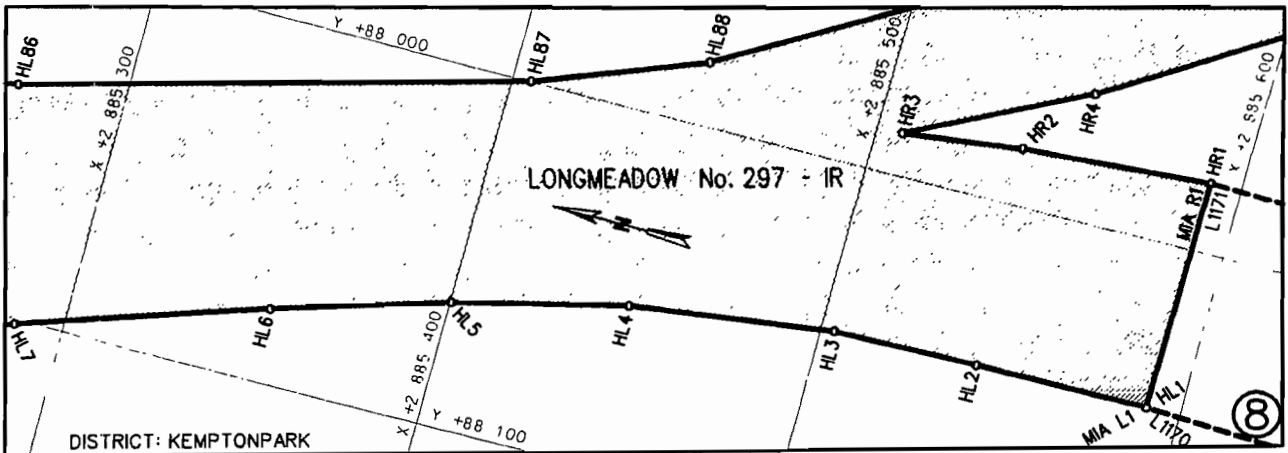
In terms of section 23(6) of the aforementioned act it is hereby stated that plans GRP 03/38/11 Exp – 15 Exp and 19 Exp – 20 Exp which indicate the land affected by the railway line in detail, are available for inspection at the office of the Department of Roads and Transport, First Floor, South Tower, Sage Life Building, 41 Simmonds Street, Johannesburg, during office hours.

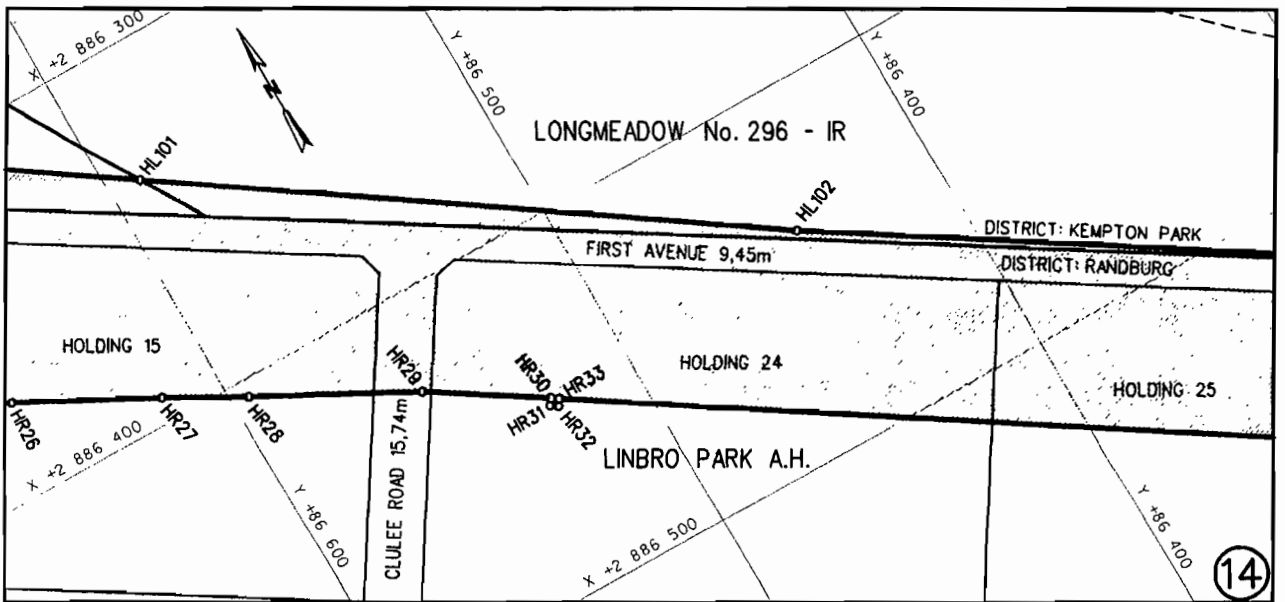
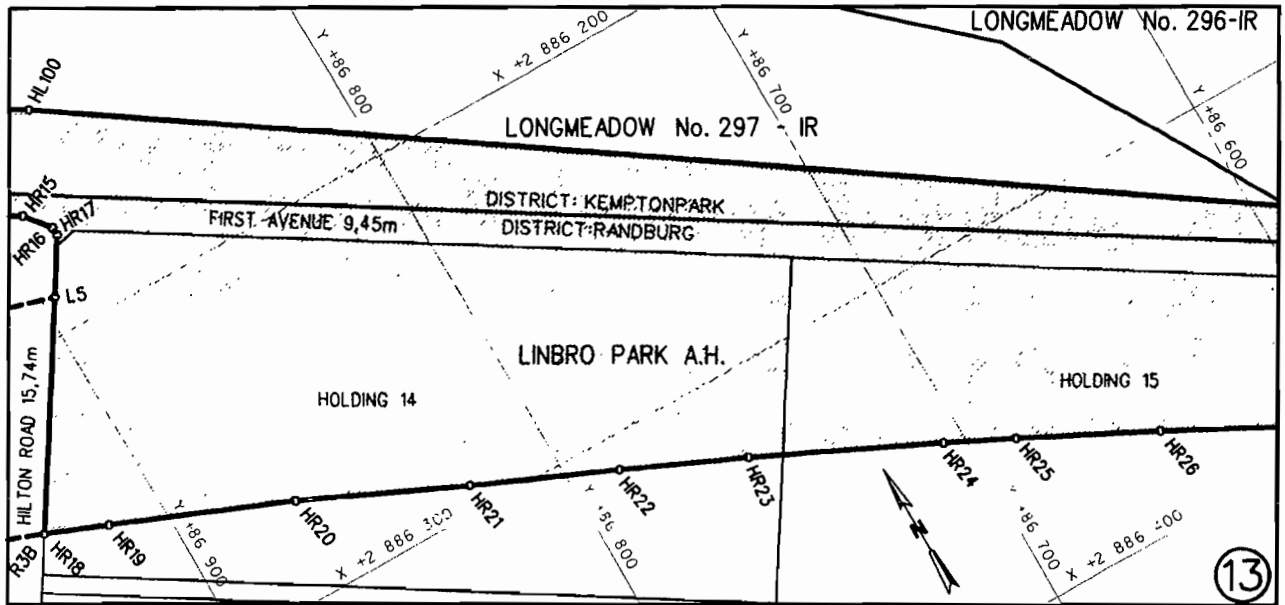
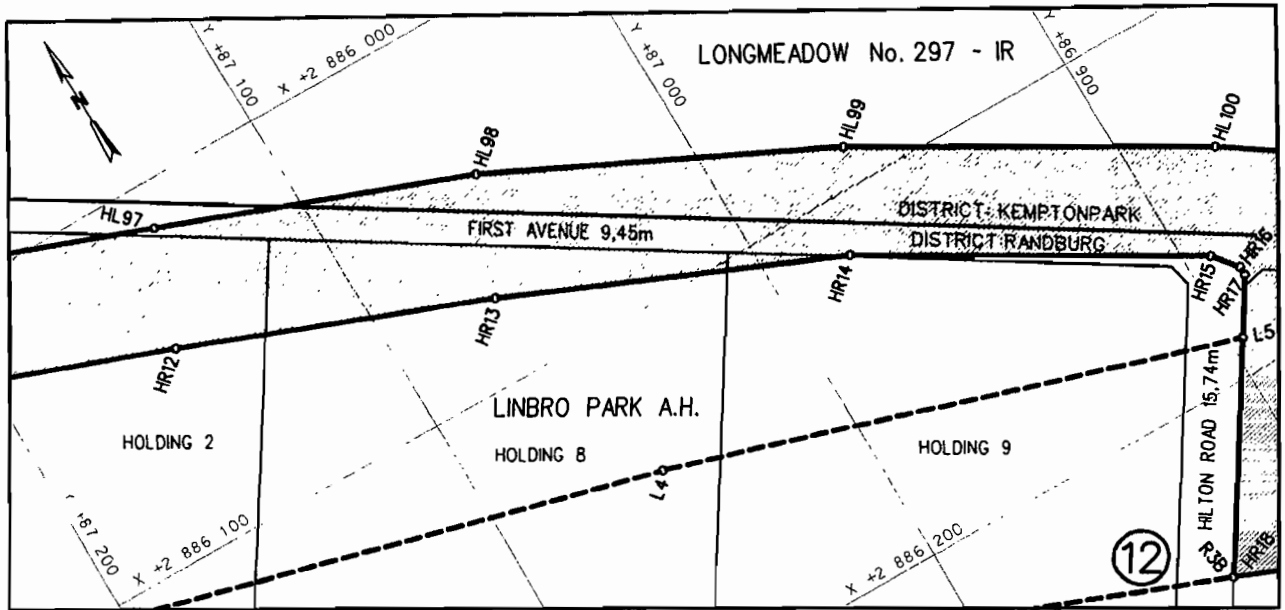
Reference: 2/1/7/8 Gautrain

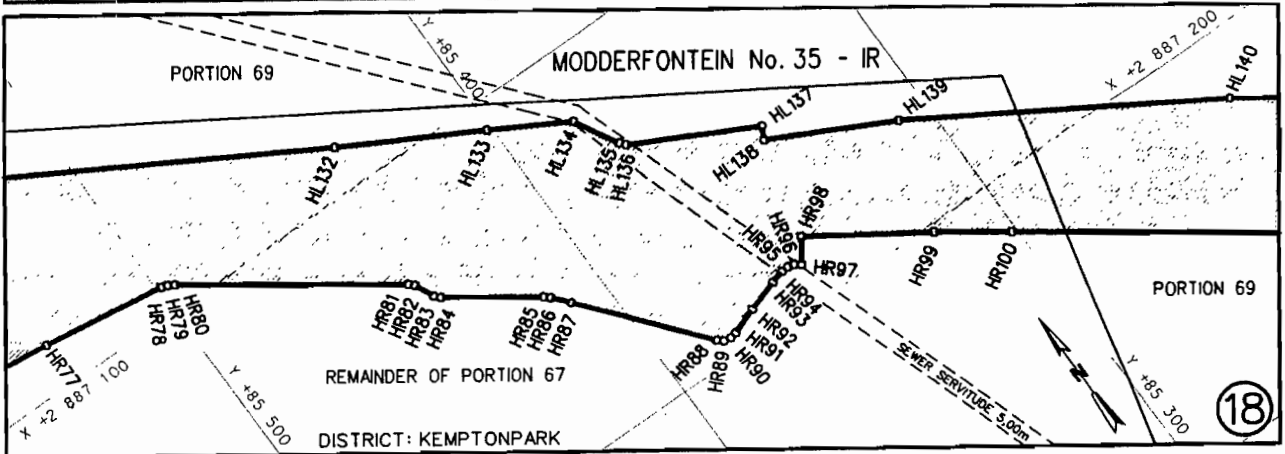
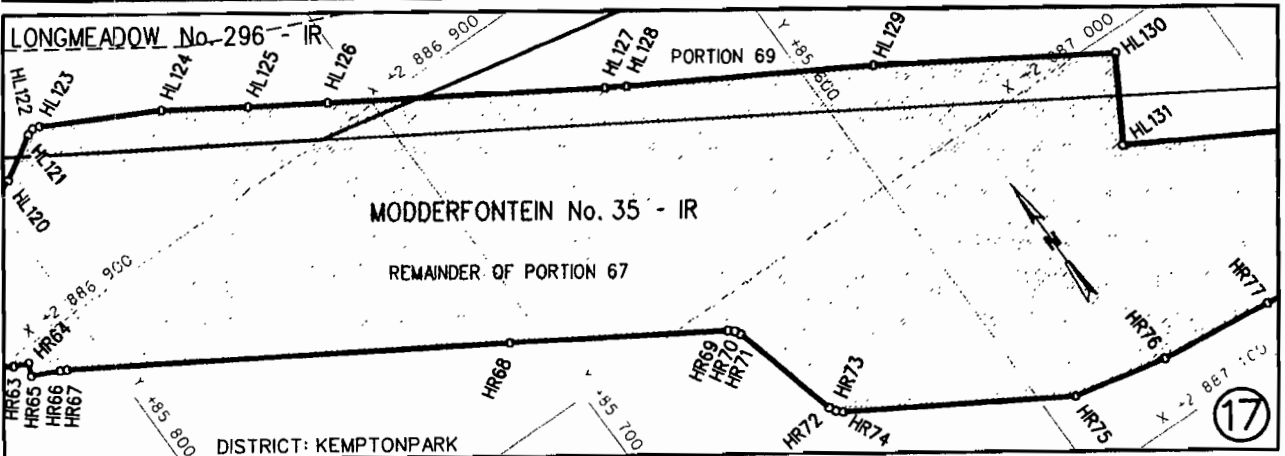
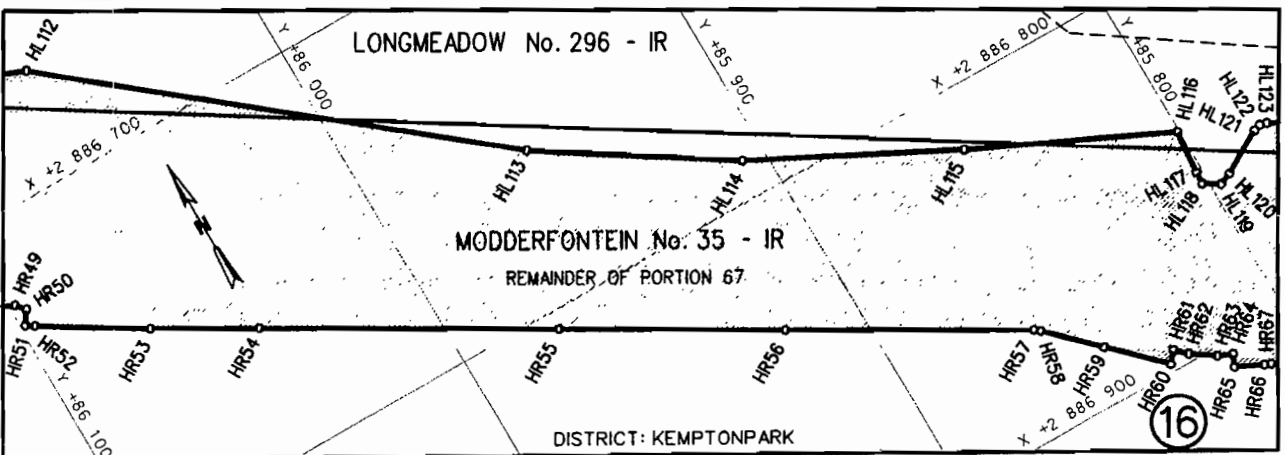
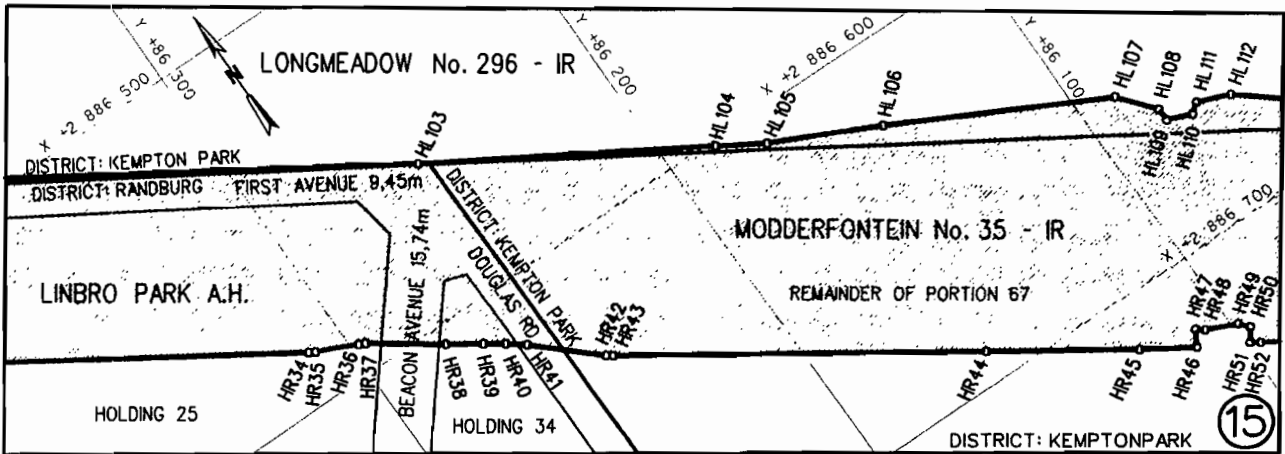


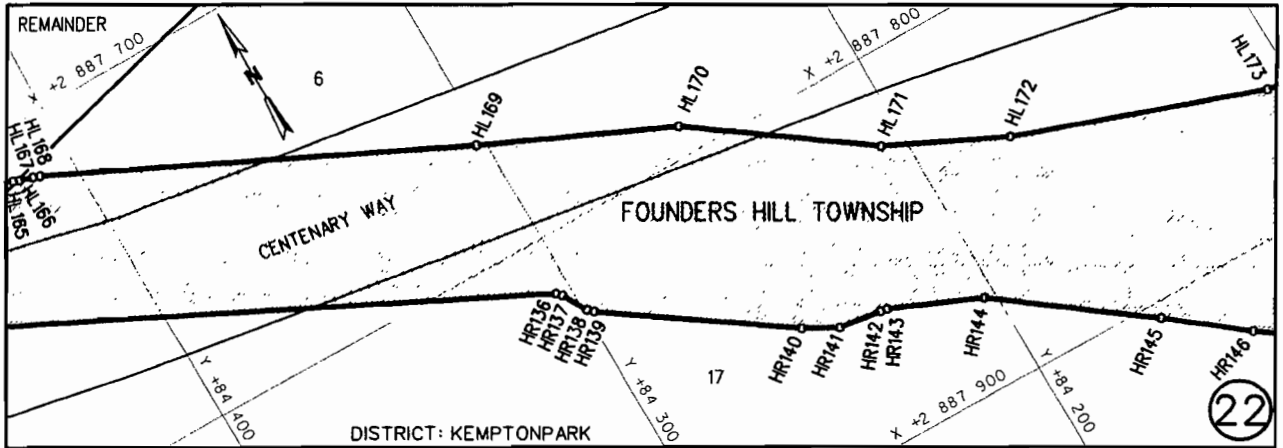
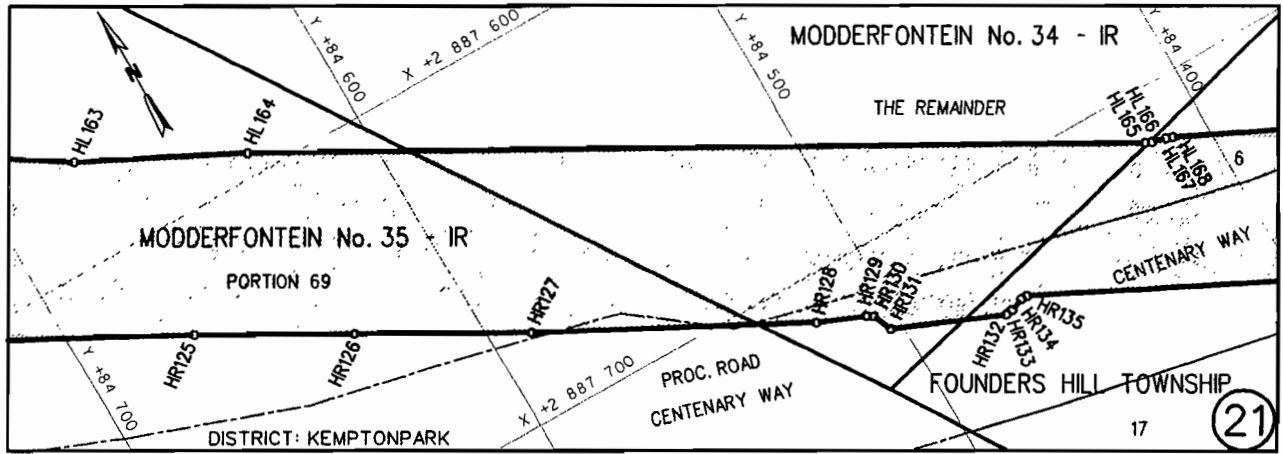
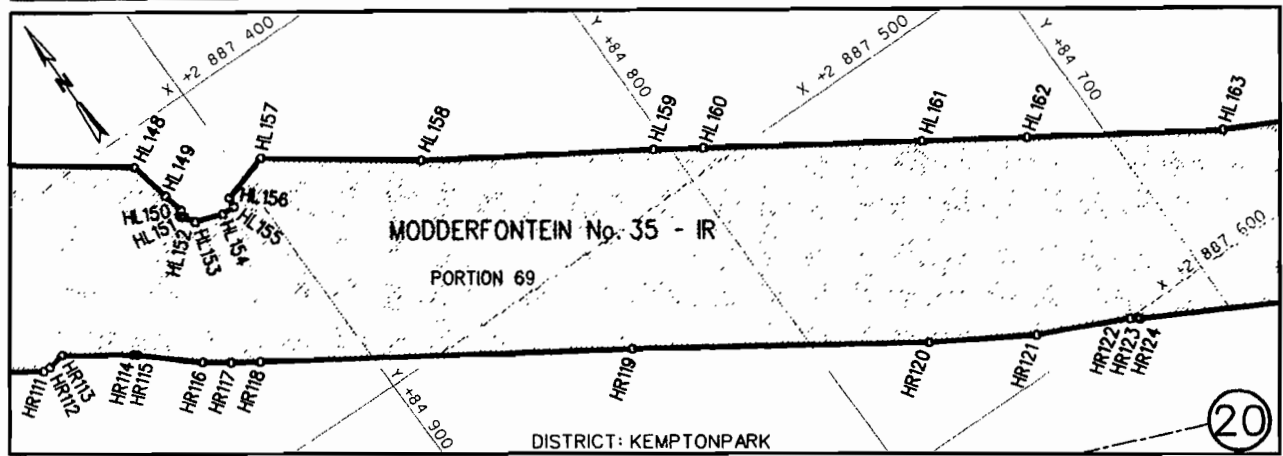
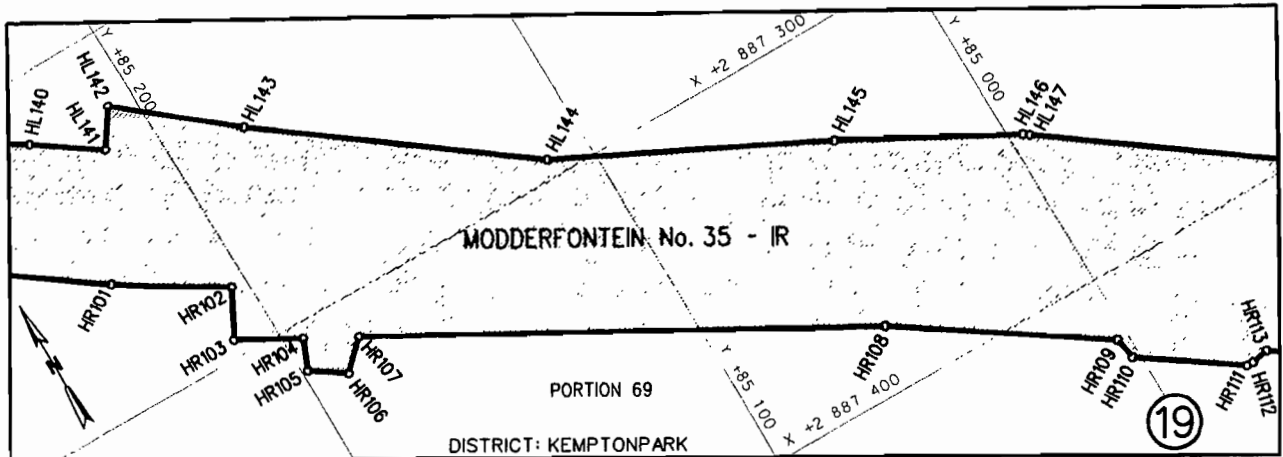


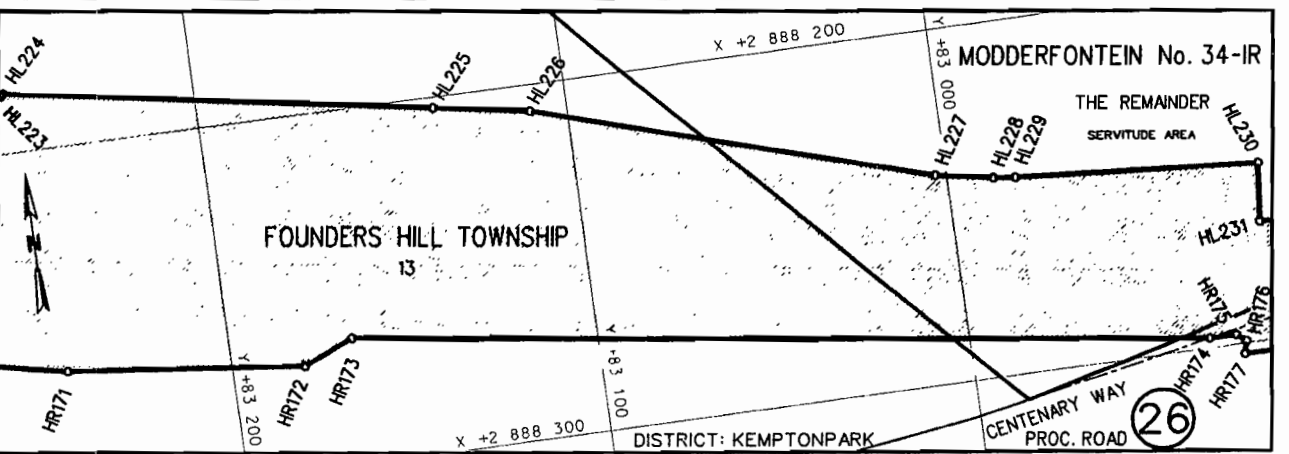
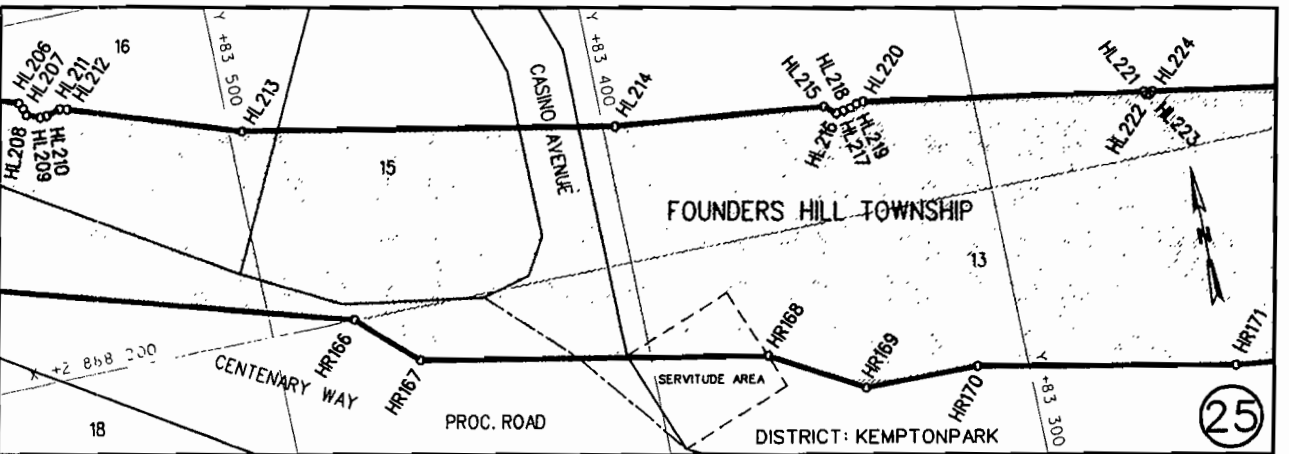
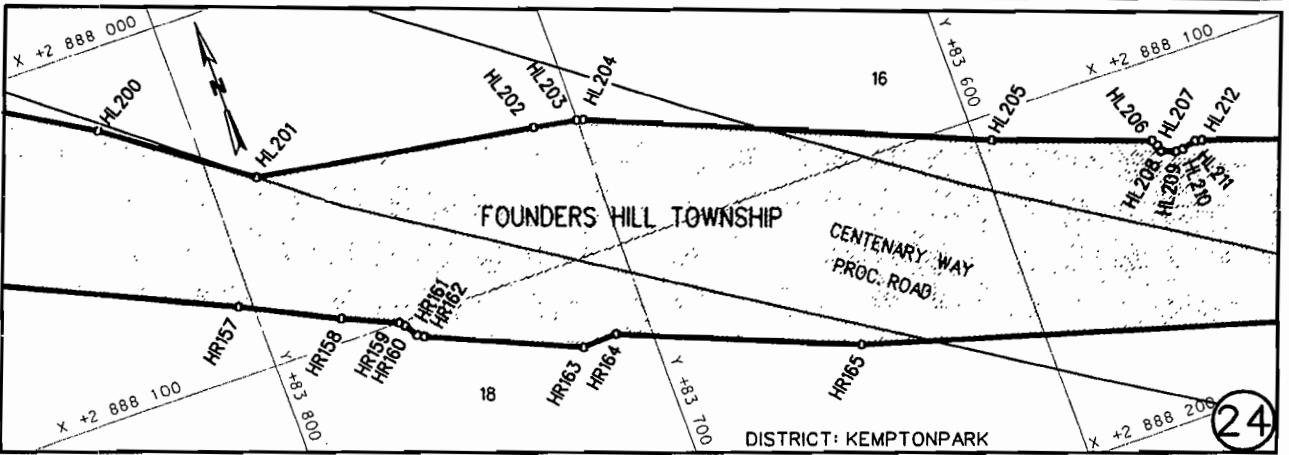
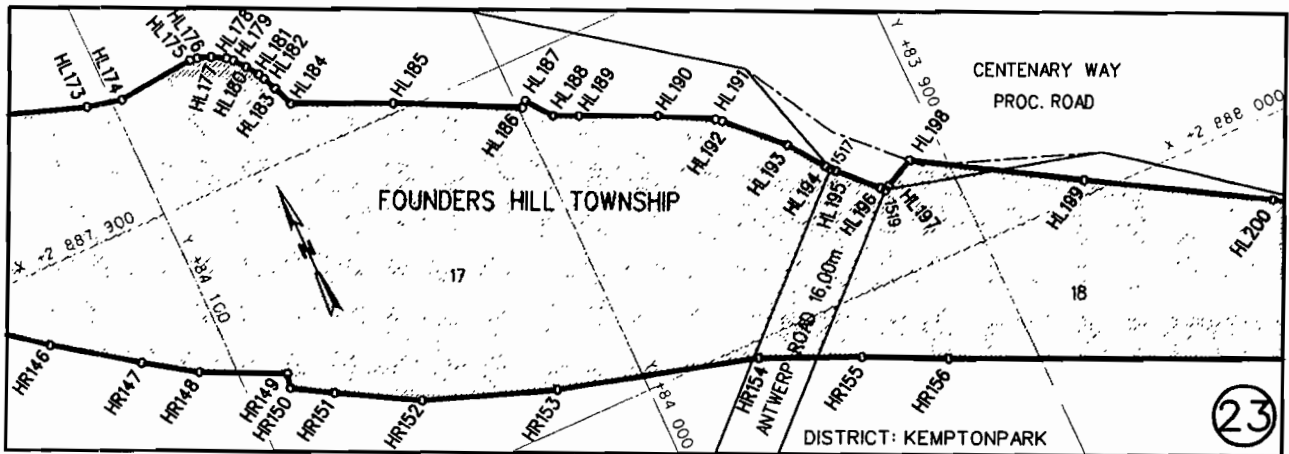


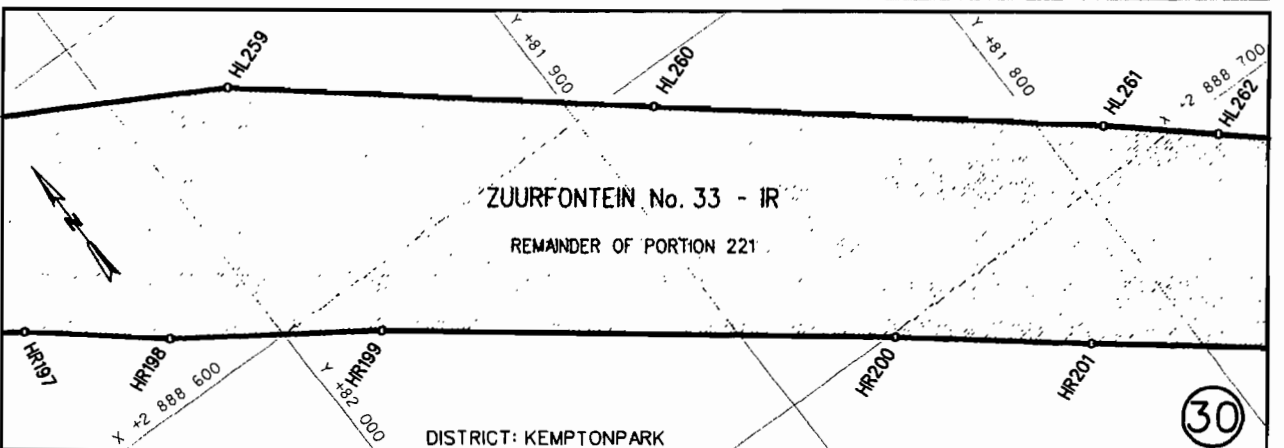
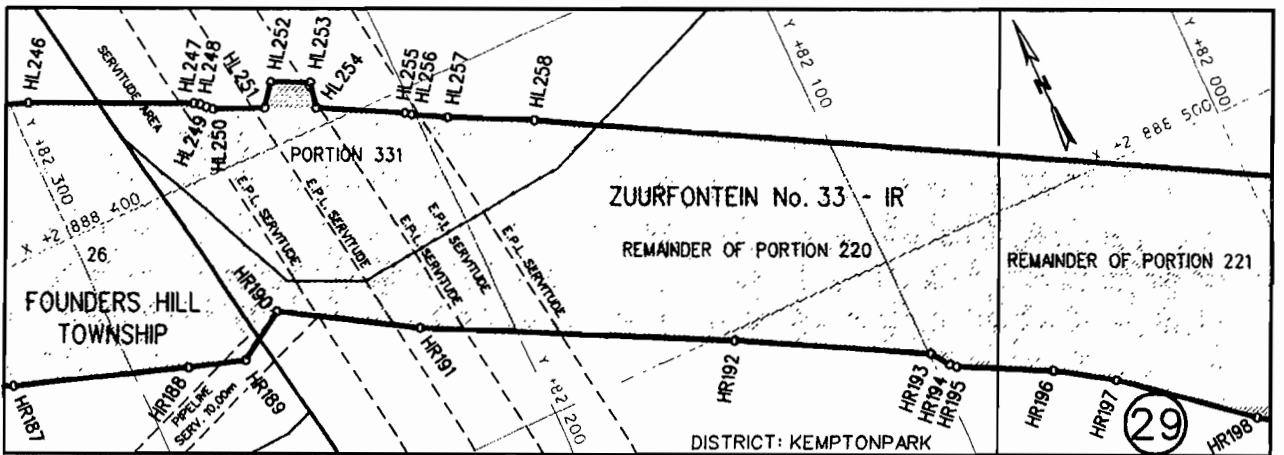
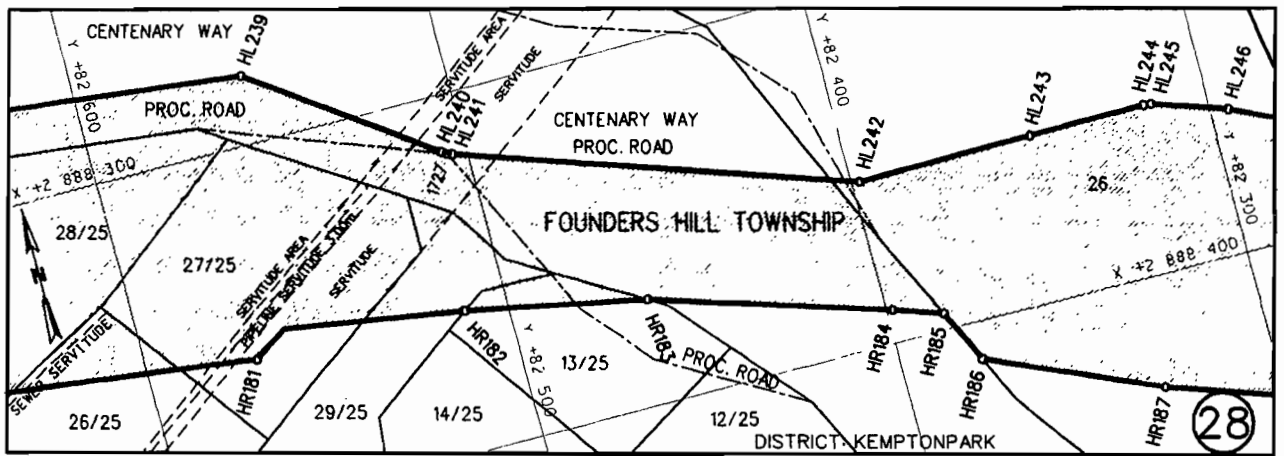
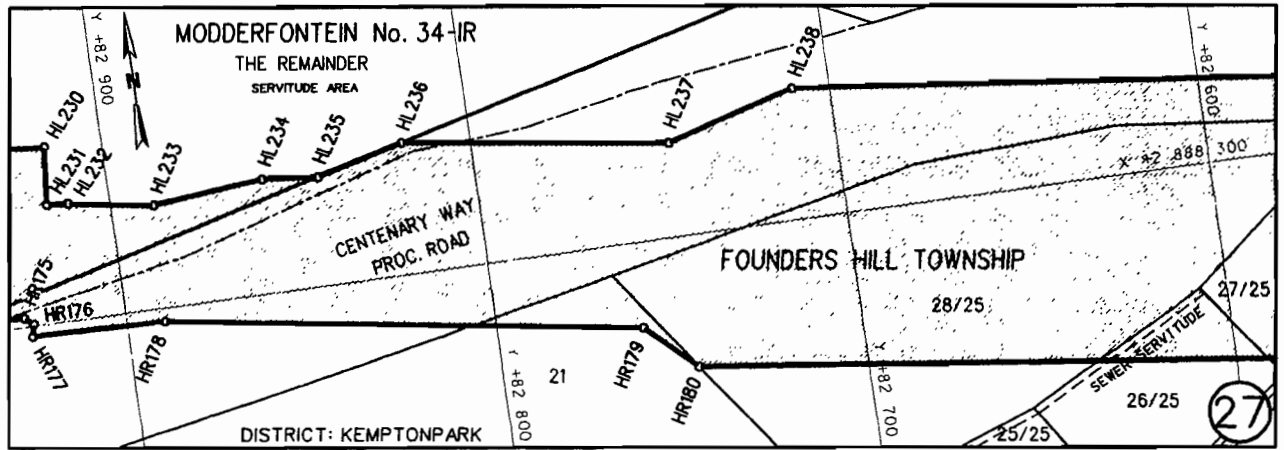




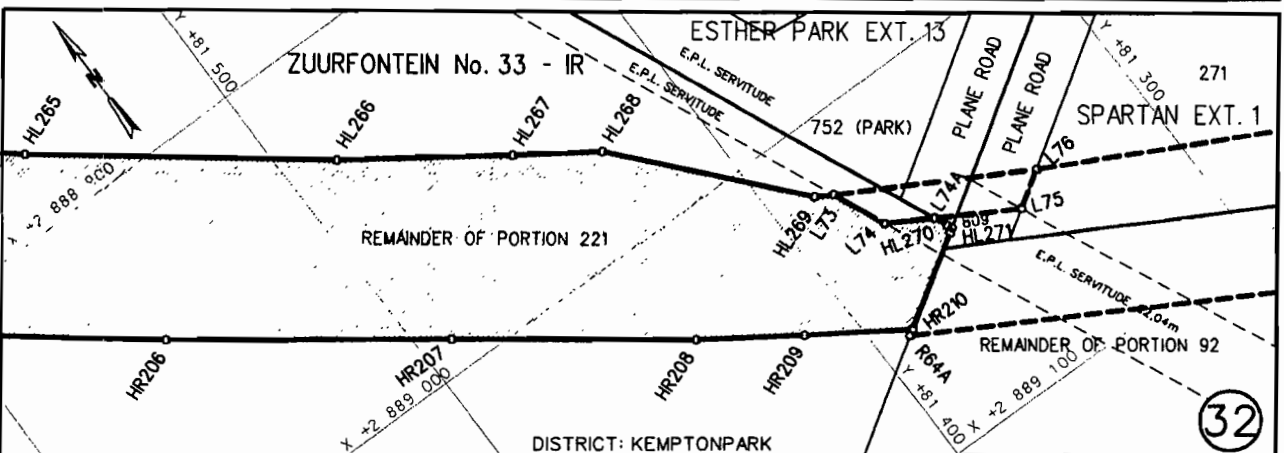
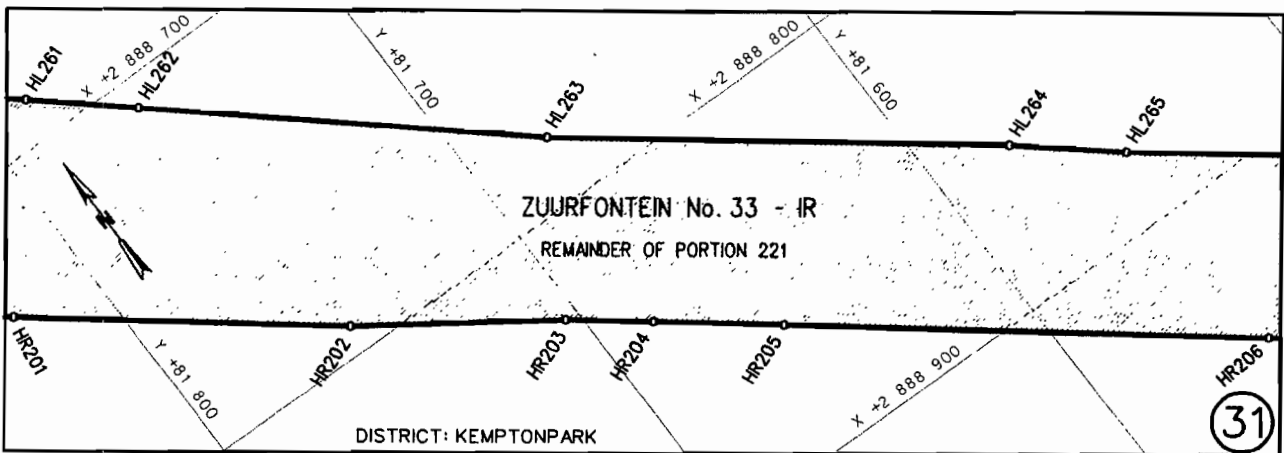












**REFERENCE / VERWYSINGS**

GEPROKLAAMEERDE SPOORLYN  
PROCLAIMED RAILWAY LINE



DIE FIGUUR : MIA R18A (HL39), HL40 - HL194, 1517, HL195, HL196, 1519, HL197 - HL240, 1727, HL241 - HL269,  
THE FIGURE : L73, L74, L74A, HL270, 809, HL271, HR210 - HR19, R3B (HR18), L5, HR17 - HR2, MIA R1 (HR1),  
MIA L1 (HL1), HL2 - HL37, MIA L24A (HL38), MIA R18A (HL39).

REPRESENTS THE PROCLAMATION OF THE PORTION CONCERNED OF THE RAILWAY LINE OVER THE FARM LONGMEADOW 297-IR, A PORTION OF JOHN STREET IN BUCCLEUCH, HOLDINGS 15 AND 16, PORTIONS OF FIRST AVENUE AND FIRST ROAD IN MODDERFONTEIN AGRICULTURAL HOLDINGS, HOLDINGS 1, 2, 8, 9, 14, 15, 24, 25, 34 AND PORTIONS OF FIRST ROAD, FIRST AVENUE, HILTON ROAD, CLULEE ROAD, BEACON AVENUE AND DOUGLAS ROAD IN LINBRO PARK AGRICULTURAL HOLDINGS, THE FARM LONGMEADOW 296-IR, THE REMAINDER OF PORTION 67, AND PORTION 69 OF THE FARM MODDERFONTEIN 35-IR, THE REMAINDER OF THE FARM MODDERFONTEIN 34-IR, ERVEN 6, 17, 18, 16, 15, 13, 21, PORTIONS 28, 26, 27, 29 AND 13 OF ERF 25, ERF 26, AND PORTIONS OF CENTENARY WAY, ANTWERP ROAD AND CASINO AVINUE IN FOUNDERS HILL, PORTION 331, THE REMAINDERS OF PORTIONS 220 AND 221 OF THE FARM ZUURFONTEIN 33-IR AS INTENDED BY THE PUBLICATION THEREOF IN THE PROVINCIAL GAZETTE AND SHOWN IN DETAIL ON PLANS GRP 03/38/11Exp-15Exp AND 19Exp-20Exp.

BUNDEL NR. / FILE NO. 2/1/7/8-GAUTRAIN

**KOÖRDINATE LYS/CO-ORDINATE LIST WG 29° KONST./CONST. Y= +/- 0.00 X= +2 800 000.00**

MIAL1	+88045.990	+85590.623	HL162	+84718.510	+87542.731	HR56	+85920.127	+86836.660
MIAL24A	+88043.882	+83041.872	HL163	+84673.332	+87571.922	HR57	+85861.741	+86870.789
MIAR1	+87980.494	+85591.294	HL164	+84630.806	+87593.572	HR58	+85860.176	+86872.025
MIAR18A	+87951.339	+83120.942	HL165	+84417.234	+87713.693	HR59	+85847.508	+86884.714
HL1	+88045.990	+85590.623	HL166	+84415.416	+87714.435	HR60	+85834.764	+86897.635
HL2	+88045.982	+85543.358	HL167	+84411.642	+87715.590	HR61	+85832.093	+86894.817
HL3	+88046.442	+85503.828	HL168	+84409.748	+87716.270	HR62	+85829.056	+86897.784
HL4	+88053.743	+85447.513	HL169	+84302.603	+87768.372	HR63	+85822.330	+86902.315
HL5	+88065.175	+85400.331	HL170	+84251.771	+87791.639	HR64	+85818.433	+86904.083
HL6	+88079.464	+85353.194	HL171	+84206.560	+87824.091	HR65	+85819.814	+86907.380
HL7	+88101.413	+85286.431	HL172	+84174.545	+87839.634	HR66	+85812.533	+86910.855
HL8	+88126.786	+85215.277	HL173	+84106.829	+87863.391	HR67	+85810.772	+86911.757
			HL174	+84097.216	+87865.612	HR68	+85708.229	+86976.033

KOÖRDINATE LYS/CO-ORDINATE LIST WG 29° KONST./CONST. Y= +/- 0.00 X= +2 800 000.00

HL9	+88188.981	+84951.438	HL175	+84075.561	+87863.300	HR69	+85657.762	+87007.988
HL10	+88213.325	+84871.454	HL176	+84073.520	+87863.525	HR70	+85656.255	+87009.279
HL11	+88241.534	+84774.122	HL177	+84069.813	+87864.888	HR71	+85655.424	+87011.010
HL12	+88266.915	+84663.864	HL178	+84066.351	+87866.937	HR72	+85647.771	+87041.713
HL13	+88278.725	+84569.409	HL179	+84064.821	+87868.262	HR73	+85646.765	+87043.415
HL14	+88288.102	+84427.613	HL180	+84062.301	+87871.364	HR74	+85645.366	+87044.757
HL15	+88283.705	+84301.398	HL181	+84060.109	+87874.703	HR75	+85591.198	+87078.065
HL16	+88228.830	+84014.079	HL182	+84059.238	+87876.482	HR76	+85565.724	+87083.326
HL17	+88216.629	+83970.710	HL183	+84057.727	+87880.195	HR77	+85534.057	+87087.103
HL18	+88199.493	+83909.789	HL184	+84055.671	+87885.800	HR78	+85498.786	+87091.985
HL19	+88187.871	+83868.013	HL185	+84030.345	+87897.241	HR79	+85497.038	+87092.661
HL20	+88174.385	+83820.449	HL186	+83998.911	+87913.113	HR80	+85495.302	+87093.646
HL21	+88160.605	+83772.996	HL187	+83997.323	+87911.738	HR81	+85443.658	+87130.552
HL22	+88140.855	+83706.709	HL188	+83992.174	+87918.758	HR82	+85442.292	+87131.860
HL23	+88116.590	+83627.123	HL189	+83985.754	+87921.771	HR83	+85439.853	+87137.315
HL24	+88114.005	+83617.574	HL190	+83965.931	+87930.842	HR84	+85438.441	+87138.788
HL25	+88094.760	+83546.825	HL191	+83952.056	+87938.349	HR85	+85415.744	+87154.933
HL26	+88093.338	+83541.071	HL192	+83950.471	+87939.615	HR86	+85414.301	+87156.250
HL27	+88091.686	+83531.069	HL193	+83937.264	+87953.252	HR87	+85410.432	+87160.786
HL28	+88081.356	+83460.574	HL194	+83930.349	+87963.130	HR88	+85384.419	+87192.826
HL29	+88059.006	+83262.876	HL195	+83928.452	+87965.443	HR89	+85382.921	+87194.119
HL30	+88053.436	+83233.666	HL196	+83919.465	+87974.844	HR90	+85380.895	+87194.577
HL31	+88046.517	+83200.559	HL197	+83917.100	+87975.233	HR91	+85378.959	+87194.176
HL32	+88046.720	+83198.609	HL198	+83909.084	+87971.033	HR92	+85371.435	+87191.299
HL33	+88045.103	+83166.845	HL199	+83868.432	+87995.878	HR93	+85362.498	+87188.185
HL34	+88043.347	+83133.568	HL200	+83824.215	+88022.372	HR94	+85358.618	+87187.119
HL35	+88042.494	+83116.392	HL201	+83787.344	+88049.087	HR95	+85356.692	+87186.935
HL36	+88041.288	+83078.748	HL202	+83711.962	+88061.586	HR96	+85354.843	+87187.438
HL37	+88041.289	+83076.775	HL203	+83700.217	+88063.609	HR97	+85353.150	+87188.605
HL38	+88043.882	+83041.872	HL204	+83698.326	+88064.116	HR98	+85348.669	+87182.262
HL39	+87951.339	+83120.942	HL205	+83595.762	+88106.962	HR99	+85318.758	+87202.201
HL40	+87950.359	+83199.463	HL206	+83554.981	+88121.843	HR100	+85301.420	+87214.493
HL41	+87949.535	+83256.989	HL207	+83553.988	+88123.608	HR101	+85232.433	+87264.447
HL42	+87949.295	+83290.344	HL208	+83553.479	+88125.454	HR102	+85204.415	+87281.818
HL43	+87949.716	+83298.346	HL209	+83549.863	+88126.920	HR103	+85211.287	+87295.231
HL44	+87988.298	+83480.160	HL210	+83547.949	+88126.908	HR104	+85194.854	+87304.359
HL45	+88003.231	+83514.016	HL211	+83544.074	+88125.879	HR105	+85198.447	+87312.896
HL46	+88003.476	+83515.881	HL212	+83542.104	+88126.360	HR106	+85189.220	+87319.095
HL47	+88002.777	+83523.205	HL213	+83496.487	+88142.059	HR107	+85181.545	+87311.719
HL48	+88000.769	+83524.198	HL214	+83396.700	+88161.798	HR108	+85055.965	+87382.171
HL49	+88001.534	+83526.088	HL215	+83339.944	+88168.357	HR109	+85003.105	+87417.539
HL50	+88048.386	+83656.535	HL216	+83336.893	+88170.882	HR110	+85002.062	+87423.797
HL51	+88051.043	+83664.072	HL217	+83334.934	+88170.636	HR111	+84975.905	+87441.749
HL52	+88067.283	+83707.136	HL218	+83333.028	+88170.257	HR112	+84973.884	+87441.849
HL53	+88092.099	+83772.103	HL219	+83331.169	+88169.514	HR113	+84969.191	+87440.962
HL54	+88134.547	+83880.586	HL220	+83329.200	+88169.282	HR114	+84953.229	+87451.961
HL55	+88167.099	+83965.427	HL221	+83254.458	+88182.383	HR115	+84952.192	+87452.787
HL56	+88179.566	+84001.525	HL222	+83253.897	+88183.342	HR116	+84938.763	+87464.777
HL57	+88182.501	+84012.950	HL223	+83253.008	+88183.507	HR117	+84932.203	+87469.411
HL58	+88181.700	+84022.732	HL224	+83252.158	+88182.822	HR118	+84925.735	+87473.746
HL59	+88191.142	+84071.268	HL225	+83136.410	+88203.047	HR119	+84840.708	+87528.976
HL60	+88198.883	+84118.140	HL226	+83110.094	+88207.722	HR120	+84773.136	+87574.200
HL61	+88199.836	+84124.081	HL227	+83003.008	+88241.506	HR121	+84747.795	+87589.401
HL62	+88209.130	+84196.509	HL228	+82987.514	+88244.420	HR122	+84724.313	+87600.269
HL63	+88213.443	+84239.978	HL229	+82981.567	+88245.192	HR123	+84722.601	+87601.159
HL64	+88216.418	+84277.538	HL230	+82915.861	+88250.537	HR124	+84722.079	+87601.859
HL65	+88218.793	+84328.992	HL231	+82917.436	+88266.751	HR125	+84668.896	+87630.780
HL66	+88219.654	+84378.557	HL232	+82911.619	+88267.243	HR126	+84630.908	+87652.311
HL67	+88219.615	+84415.868	HL233	+82888.150	+88271.063	HR127	+84589.181	+87676.020
HL68	+88217.853	+84463.435	HL234	+82857.717	+88267.905	HR128	+84519.933	+87712.525
HL69	+88216.085	+84483.033	HL235	+82842.526	+88269.530	HR129	+84507.204	+87717.867
HL70	+88214.160	+84510.564	HL236	+82818.741	+88263.254	HR130	+84505.548	+87718.775
HL71	+88212.768	+84528.282	HL237	+82745.847	+88273.659	HR131	+84503.216	+87724.358
HL72	+88209.970	+84551.386	HL238	+82710.093	+88263.021	HR132	+84473.829	+87736.568
HL73	+88208.914	+84559.652	HL239	+82554.174	+88280.907	HR133	+84471.786	+87736.276
HL74	+88195.623	+84651.268	HL240	+82506.629	+88315.570	HR134	+84468.126	+87734.771
HL75	+88188.972	+84688.455	HL241	+82503.999	+88316.942	HR135	+84466.229	+87734.763
HL76	+88183.523	+84719.572	HL242	+82397.813	+88353.464	HR136	+84304.351	+87815.412
HL77	+88176.534	+84758.647	HL243	+82349.579	+88353.014	HR137	+84302.960	+87816.801
HL78	+88164.045	+84810.686	HL244	+82317.575	+88352.970	HR138	+84299.161	+87823.738
HL79	+88134.613	+84933.866	HL245	+82315.559	+88353.123	HR139	+84297.682	+87825.154
HL80	+88052.083	+85213.409	HL246	+82294.871	+88360.130	HR140	+84250.799	+87857.715
HL81	+88053.391	+85218.288	HL247	+82253.687	+88379.465	HR141	+84241.619	+87862.749
HL82	+88056.098	+85219.147	HL248	+82252.270	+88380.397	HR142	+84229.733	+87864.318
HL83	+88053.182	+85233.361	HL249	+82250.921	+88381.872	HR143	+84227.838	+87864.652
HL84	+88049.414	+85232.663	HL250	+82249.435	+88383.181	HR144	+84203.165	+87875.251
HL85	+88043.694	+85236.971	HL251	+82236.492	+88388.768	HR145	+84164.017	+87904.477
HL86	+88036.873	+85270.136	HL252	+82231.945	+88382.964	HR146	+84143.785	+87920.359
HL87	+87999.777	+85405.101	HL253	+82222.143	+88387.612	HR147	+84122.786	+87935.384
HL88	+87981.936	+85451.058	HL254	+82223.677	+88394.780	HR148	+84109.506	+87944.294
HL89	+87932.277	+85535.404	HL255	+82202.477	+88406.235	HR149	+84087.958	+87954.639
HL90	+87873.994	+85613.355	HL256	+82200.902	+88407.389	HR150	+84088.833	+87958.656
HL91	+87807.669	+85684.176	HL257	+82192.224	+88412.205	HR151	+84078.496	+87964.854

KOÖRDINATE LYS/CO-ORDINATE LIST WG 29° KONST./CONST. Y= +/- 0.00 X= +2 800 000.00

HL92	+87734.484	+85747.677	HL258	+82170.881	+88423.074	HR152	+84057.779	+87976.748
HL93	+87654.602	+85802.822	HL259	+81970.845	+88535.086	HR153	+84023.032	+87989.444
HL94	+87568.251	+85848.024	HL260	+81880.472	+88609.625	HR154	+83969.069	+88004.568
HL95	+87510.087	+85871.416	HL261	+81785.133	+88687.880	HR155	+83943.709	+88015.922
HL96	+87450.729	+85894.909	HL262	+81761.326	+88708.581	HR156	+83922.632	+88026.113
HL97	+87138.147	+86012.571	HL263	+81677.366	+88781.703	HR157	+83803.878	+88081.081
HL98	+87055.085	+86044.207	HL264	+81577.671	+88858.935	HR158	+83778.850	+88093.552
HL99	+86963.897	+86089.255	HL265	+81553.557	+88879.426	HR159	+83764.400	+88099.950
HL100	+86876.434	+86140.762	HL266	+81486.139	+88931.777	HR160	+83763.143	+88101.418
HL101	+86590.980	+86337.098	HL267	+81447.124	+88959.295	HR161	+83761.047	+88104.838
HL102	+86442.118	+86439.485	HL268	+81426.862	+88973.177	HR162	+83759.352	+88105.970
HL103	+86255.987	+86559.403	HL269	+81387.832	+89018.095	HR163	+83719.241	+88123.598
HL104	+86186.373	+86601.683	HL270	+81363.644	+89046.149	HR164	+83709.581	+88123.177
HL105	+86174.553	+86609.002	HL271	+81364.305	+89048.345	HR165	+83647.650	+88148.756
HL106	+86145.885	+86622.775				HR166	+83477.555	+88199.912
HL107	+86089.403	+86652.087	HR1	+87980.494	+85591.294	HR167	+83462.229	+88214.662
HL108	+86082.006	+86661.375	HR2	+87983.996	+85539.595	HR168	+83368.616	+88233.300
HL109	+86081.785	+86665.111	HR3	+87988.002	+85507.140	HR169	+83344.343	+88247.519
HL110	+86075.208	+86667.677	HR4	+87963.694	+85554.566	HR170	+83313.836	+88247.956
HL111	+86072.384	+86665.525	HR5	+87908.564	+85640.896	HR171	+83245.051	+88262.508
HL112	+86063.174	+86669.242	HR6	+87841.212	+85718.511	HR172	+83180.484	+88270.108
HL113	+85955.714	+86757.167	HR7	+87763.436	+85785.963	HR173	+83166.974	+88264.056
HL114	+85906.310	+86789.339	HR8	+87677.058	+85841.818	HR174	+82935.283	+88297.210
HL115	+85852.692	+86816.995	HR9	+87584.799	+85886.627	HR175	+82928.071	+88297.309
HL116	+85800.537	+86841.616	HR10	+87524.176	+85908.211	HR176	+82925.564	+88299.354
HL117	+85801.626	+86854.191	HR11	+87463.989	+85930.200	HR177	+82926.338	+88302.818
HL118	+85801.703	+86857.794	HR12	+87150.317	+86044.960	HR178	+82889.461	+88303.767
HL119	+85797.152	+86860.574	HR13	+87067.959	+86076.753	HR179	+82759.886	+88324.064
HL120	+85793.830	+86859.162	HR14	+86977.605	+86115.941	HR180	+82746.103	+88337.016
HL121	+85781.824	+86852.042	HR15	+86892.872	+86165.858	HR181	+82570.065	+88359.313
HL122	+85779.914	+86851.404	HR16	+86887.245	+86172.742	HR182	+82512.039	+88360.889
HL123	+85777.950	+86851.974	HR17	+86887.095	+86175.173	HR183	+82462.391	+88370.709
HL124	+85748.105	+86867.782	HR18	+86932.021	+86246.495	HR184	+82398.296	+88390.846
HL125	+85728.201	+86880.799	HR19	+86915.213	+86253.213	HR185	+82385.115	+88395.451
HL126	+85709.842	+86892.558	HR20	+86867.539	+86272.915	HR186	+82378.131	+88410.365
HL127	+85645.853	+86932.865	HR21	+86824.422	+86292.785	HR187	+82331.785	+88430.691
HL128	+85640.901	+86935.886	HR22	+86786.384	+86309.419	HR188	+82285.705	+88446.329
HL129	+85582.769	+86970.187	HR23	+86753.823	+86324.138	HR189	+82270.553	+88451.115
HL130	+85527.208	+87005.554	HR24	+86705.732	+86347.037	HR190	+82257.196	+88442.352
HL131	+85540.370	+87027.905	HR25	+86687.949	+86355.663	HR191	+82223.832	+88462.902
HL132	+85437.753	+87087.970	HR26	+86652.718	+86373.500	HR192	+82146.520	+88502.635
HL133	+85401.427	+87108.007	HR27	+86616.014	+86393.082	HR193	+82099.588	+88528.442
HL134	+85380.671	+87119.843	HR28	+86595.252	+86404.745	HR194	+82096.194	+88533.329
HL135	+85374.047	+87132.064	HR29	+86553.745	+86427.078	HR195	+82094.759	+88534.751
HL136	+85372.797	+87133.574	HR30	+86523.968	+86446.289	HR196	+82071.127	+88546.806
HL137	+85339.794	+87150.888	HR31	+86525.261	+86447.978	HR197	+82056.527	+88556.519
HL138	+85341.465	+87154.423	HR32	+86523.301	+86449.235	HR198	+82025.543	+88582.304
HL139	+85308.684	+87171.208	HR33	+86522.031	+86447.552	HR199	+81977.958	+88615.035
HL140	+85231.650	+87218.490	HR34	+86310.390	+86585.731	HR200	+81866.357	+88701.203
HL141	+85214.387	+87230.542	HR35	+86308.643	+86586.707	HR201	+81824.303	+88734.952
HL142	+85207.242	+87220.341	HR36	+86297.881	+86591.696	HR202	+81751.814	+88792.228
HL143	+85178.282	+87244.527	HR37	+86296.133	+86592.608	HR203	+81703.780	+88825.854
HL144	+85112.064	+87294.703	HR38	+86278.373	+86605.296	HR204	+81684.891	+88840.592
HL145	+85041.432	+87330.351	HR39	+86269.919	+86611.038	HR205	+81656.768	+88862.800
HL146	+84996.276	+87355.119	HR40	+86265.000	+86614.546	HR206	+81553.496	+88944.614
HL147	+84994.620	+87356.233	HR41	+86260.266	+86618.119	HR207	+81491.315	+88990.938
HL148	+84922.648	+87409.097	HR42	+86244.268	+86632.939	HR208	+81437.834	+89031.271
HL149	+84920.277	+87420.657	HR43	+86242.682	+86634.186	HR209	+81413.492	+89048.037
HL150	+84919.059	+87426.261	HR44	+86159.008	+86691.127	HR210	+81388.952	+89064.356
HL151	+84920.125	+87427.567	HR45	+86124.645	+86714.441			
HL152	+84919.408	+87428.295	HR46	+86111.563	+86722.770	L5	+86896.354	+86189.872
HL153	+84917.827	+87431.091	HR47	+86109.008	+86718.478	L73	+81383.348	+89020.773
HL154	+84910.361	+87433.738	HR48	+86106.905	+86720.162	L74	+81376.980	+89035.484
HL155	+84906.635	+87433.749	HR49	+86098.368	+86723.994	L74A	+81365.265	+89042.406
HL156	+84906.273	+87431.161	HR50	+86096.103	+86726.604	R3B	+86932.021	+86246.495
HL157	+84893.008	+87426.889	HR51	+86098.567	+86730.263			
HL158	+84857.632	+87452.628	HR52	+86096.302	+86731.820	809	+81363.048	+89047.525
HL159	+84803.965	+87486.746	HR53	+86069.255	+86748.601	1517	+83929.489	+87964.359
HL160	+84792.541	+87494.250	HR54	+86043.402	+86763.661	1519	+83918.429	+87975.929
HL161	+84742.582	+87527.011	HR55	+85973.163	+86805.156	1727	+82505.417	+88316.454