

*THE PROVINCE OF
GAUTENG*

*DIE PROVINSIE
GAUTENG*

**Provincial Gazette Extraordinary
Buitengewone Provinsiale Koerant**

Vol. 16

PRETORIA, 8 NOVEMBER 2010

No. 192

IMPORTANT NOTICE

The Government Printing Works will not be held responsible for faxed documents not received due to errors on the fax machine or faxes received which are unclear or incomplete. Please be advised that an "OK" slip, received from a fax machine, will not be accepted as proof that documents were received by the GPW for printing. If documents are faxed to the GPW it will be the sender's responsibility to phone and confirm that the documents were received in good order.

Furthermore the Government Printing Works will also not be held responsible for cancellations and amendments which have not been done on original documents received from clients.

CONTENTS • INHOUD*No.**Page
No. Gazette
 No.***GENERAL NOTICE**

3064	Gauteng Transport Infrastructure Act (8/2001): Closure of an access road in respect of Provincial Road P70-1: District of Johannesburg	3	192
------	---	---	-----

GENERAL NOTICE

NOTICE 3064 OF 2010

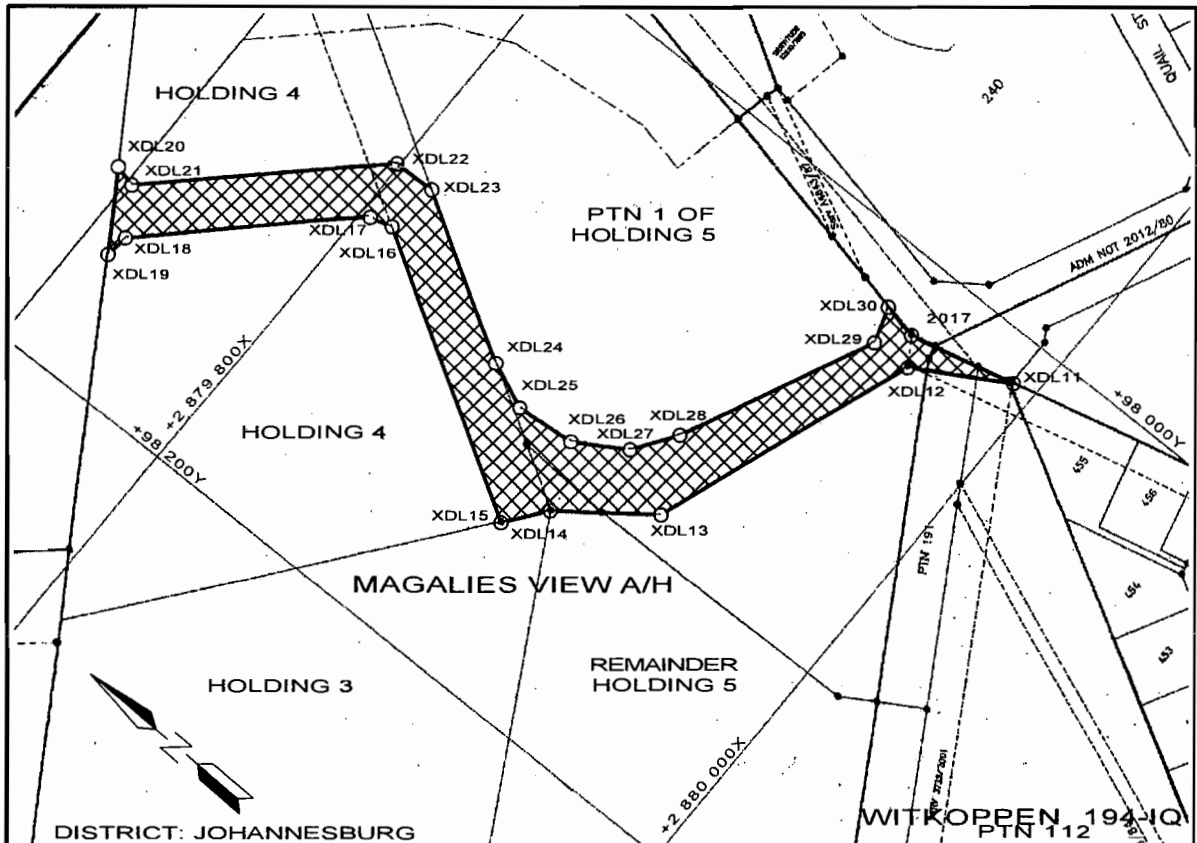
CLOSURE OF AN ACCESS ROAD IN RESPECT OF PROVINCIAL ROAD P70-1: DISTRICT JOHANNESBURG

In terms of section 38 (5) of the Gauteng Transport Infrastructure Act, 2001 (Act No 8 of 2001) the MEC hereby proclaims the closure of an access road in respect of Provincial Road P70-1 on the land as described and indicated by the figure on the accompanying sketch plan.

Boundary beacons, demarcating the aforementioned closure of the road, have been placed on the land concerned and plans PRS 74/59/1V and PRS 72/48/6V indicating the closure of the road, in detail are available for inspection by any interested person during office hours at the office of the Department of Roads and Transport, Sage Life Building, 41 Simmonds Street, Johannesburg.

MEC Resolution: 011 dated 14 June 2010

Reference: 2/1/1/2/3/1-P70-1



VERWYSINGS / REFERENCE

SLUITING VAN TOEGANGSPAD
CLOSURE OF ACCESS ROAD



DIE FIGUUR XDL11 - XDL30, 2017, XDL11
VERTEENWOORDIG DIE SLUITING VAN 'N TOEGANGSPAD NA
PROVINSIALE PAD P70-1 OOR HOEW 4, GEDEELTE 1 VAN HOEW 5
EN RESTANT VAN HOEW 5 VAN MAGALIESVIEW L/H, GEDEELTE 191
EN RESTANT GEDEELTE 112 VAN DIE PLAAS WITKOPPEN 194-IQ SOOS
BEDOEL BY AFKONDIGING DAARVAN IN DIE PROVINSIALE KOERANT EN
IN DETAIL GETOON OP PLANNE PRS 74/59/1V EN PRS 72/48/6V

THE FIGURE XDL11 - XDL30, 2017, XDL11
REPRESENTS THE CLOSURE OF AN ACCESS ROAD TO PROVINCIAL
ROAD P70-1 OVER HOLDING 4, PORTION 1 OF HOLDING 5 AND
REMAINDER OF HOLDING 5 OF MAGALIESVIEW A/H, PORTION 191
AND REMAINDER OF PORTION 112 OF THE FARM WITKOPPEN 194-IQ
AS INTENDED BY PUBLICATION THEREOF IN THE PROVINCIAL GAZETTE
AND SHOWN IN DETAIL ON PLANS PRS 74/59/1V AND PRS 72/48/6V

BUNDEL NR. / FILE NO. 2/1/1/2/3/1-P70-1

KOÖRDINATE LYS / CO-ORDINATE LIST L_o 29° KONST. / CONST. Y = ± 0.000 X = +2 800 000.000

XDL11	+98 013.94	+79 992.36	XDL18	+98 151.98	+79 748.52	XDL25	+98 116.77	+79 877.55
XDL12	+98 037.50	+79 969.23	XDL19	+98 159.87	+79 747.53	XDL26	+98 115.05	+79 896.76
XDL13	+98 115.53	+79 932.98	XDL20	+98 137.04	+79 733.21	XDL27	+98 105.39	+79 912.71
XDL14	+98 136.08	+79 905.62	XDL21	+98 138.04	+79 739.19	XDL28	+98 091.65	+79 922.02
XDL15	+98 148.56	+79 895.82	XDL22	+98 080.95	+79 798.96	XDL29	+98 030.89	+79 950.25
XDL16	+98 097.55	+79 810.16	XDL23	+98 080.53	+79 812.35	XDL30	+98 019.53	+79 946.46
XDL17	+98 099.85	+79 802.44	XDL24	+98 109.64	+79 861.23			