

*THE PROVINCE OF
GAUTENG*

*DIE PROVINSIE
GAUTENG*

**Provincial Gazette Extraordinary
Buitengewone Provinsiale Koerant**

Vol. 16

PRETORIA, 12 NOVEMBER 2010

No. 198

IMPORTANT NOTICE

The Government Printing Works will not be held responsible for faxed documents not received due to errors on the fax machine or faxes received which are unclear or incomplete. Please be advised that an "OK" slip, received from a fax machine, will not be accepted as proof that documents were received by the GPW for printing. If documents are faxed to the GPW it will be the sender's responsibility to phone and confirm that the documents were received in good order.

Furthermore the Government Printing Works will also not be held responsible for cancellations and amendments which have not been done on original documents received from clients.

CONTENTS • INHOUD

| <i>No.</i> | | <i>Page No.</i> | <i>Gazette No.</i> |
|------------------------|---|---------------------|------------------------|
| GENERAL NOTICES | | | |
| 3211 | Gauteng Transport Infrastructure Act (8/2001): Proclamation of the increase in width of a portion of Provincial Road K27: District of Midrand | 3 | 198 |
| 3212 | do.: Proclamation of the increase in width of a portion of Provincial Road K60: District of Midrand | 5 | 198 |
| 3213 | do.: Taking over of all responsibilities in connection with Provincial Roads 48 and 734 by the Dinokeng Game Reserve Management Association | 7 | 198 |
| 3214 | do.: Proclamation of a portion of Provincial Road K54: District of Pretoria..... | 9 | 198 |
| 3215 | do.: Proclamation of the increase in width of a portion of Provincial Road K46: District of Randburg | 11 | 198 |
| 3216 | do.: Proclamation of access roads in connection with Provincial Road K46: District of Randburg..... | 17 | 198 |
| 3217 | do.: Proclamation of an access road in connection with the Gautrain Rapid Rail Link between Pretoria, Johannesburg and the OR Tambo International Airport | 23 | 198 |

GENERAL NOTICES

NOTICE 3211 OF 2010

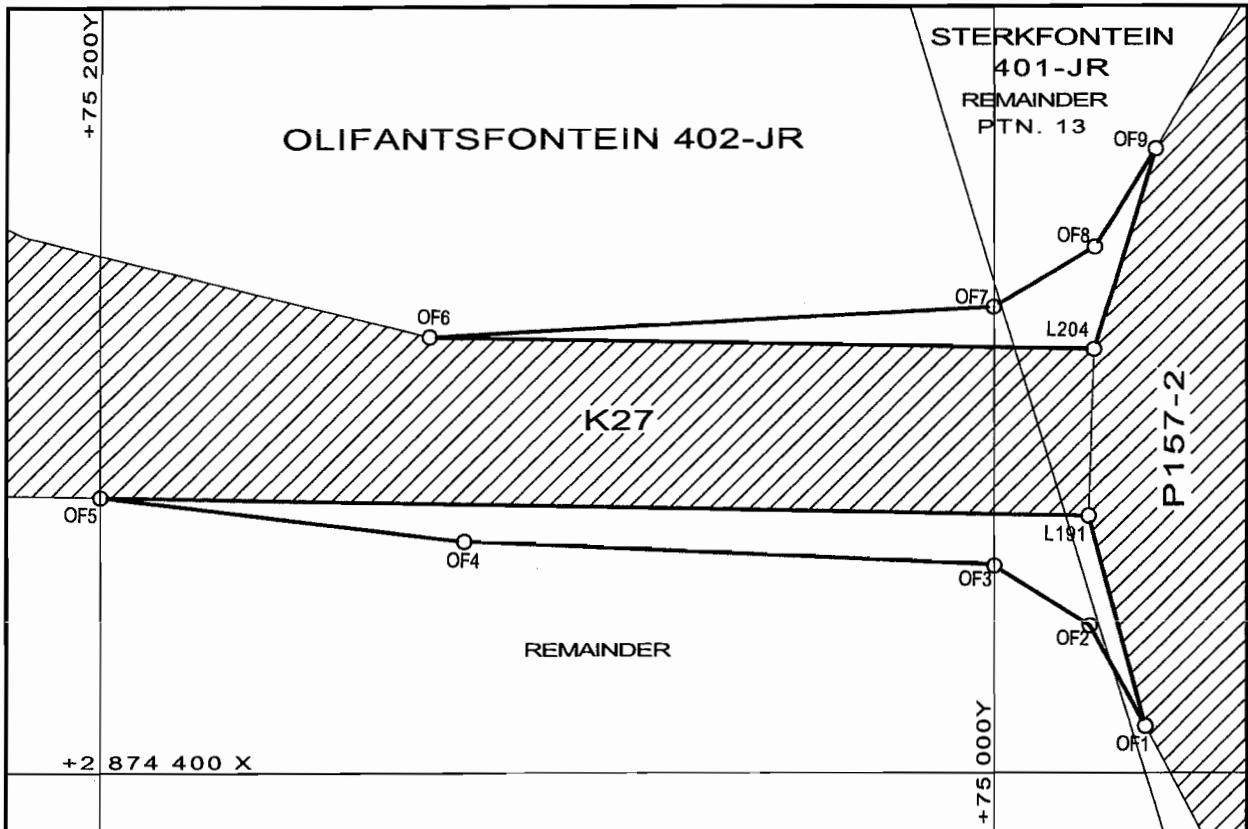
PROCLAMATION OF THE INCREASE IN WIDTH OF A PORTION OF PROVINCIAL ROAD K27: DISTRICT MIDRAND

In terms of section 11(2) of the Gauteng Transport Infrastructure Act, 2001 (Act No. 8 of 2001) the MEC hereby proclaims the increase in width of a portion of provincial road K27 on the land as described and indicated by the figures on the accompanying sketch plan.

In terms of section 23(6) of the aforementioned act, it is hereby stated that plan GRP 08/15/1 Exp which indicate the land encroached upon by the increase in width of the road in detail, is available for inspection by any interested person during office hours in the Plan Room of the Department of Roads and Transport, Sage Life Building, 41 Simmonds Street, Johannesburg.

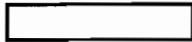
Reference: 2/1/1/2/3/1-K27

MEC Resolution 012 dated 20 July 2010



VERWYSING / REFERENCE

PAD VERBREED
ROAD WIDENED



BESTAANDE PAD
EXISTING ROAD



DIE FIGURE (1) OF1 - OF5, L191, OF1
(2) OF6 - OF9, L204, OF6

VERTEENWOORDIG DIE PROKLAMASIE VAN DIE VERMEERDERING IN BREDTE VAN PROVINSIALE PAD K27 OOR DIE RESTANT GEDEELTE 13 VAN DIE PLAAS STERKFONTEIN 401-JR EN DIE RESTANT VAN DIE PLAAS OLIFANTSFONTEIN 402-JR MUNICIPALITEIT MIDRAND SOOS BEDOEL BY AFKONDIGING DAARVAN IN DIE PROVINSIALE KOERANT EN IN DETAIL GETOON OP PLAN GRP08/15/1Exp

THE FIGURES (1) OF1 - OF5, L191, OF1
(2) OF6 - OF9, L204, OF6

REPRESENTS THE PROCLAMATION OF THE INCREASE IN WIDTH OF PROVINCIAL ROAD K27 OVER THE REMAINDER PORTION 13 OF THE FARM STERKFONTEIN 401-JR AND THE REMAINDER OF THE FARM OLIFANTSFONTEIN 402-JR MUNICIPALITY MIDRAND AS INTENDED BY PUBLICATION THEREOF IN THE PROVINCIAL GAZETTE AND SHOWN IN DETAIL ON PLAN GRP08/15/1Exp

BUNDEL NR. / FILE NO. 2/1/1/2/3/1-K27

KOÖRDINATE LYS / CO-ORDINATE LIST WG 29° KONST. / CONST. Y = ± 0.000 X = +2 800 000.000

| | | |
|----------------------------|---------------------------|---------------------------|
| L191 +74 978.66 +74 341.52 | OF2 +74 978.50 +74 366.27 | OF6 +75 126.06 +74 300.86 |
| L204 +74 977.44 +74 303.76 | OF3 +74 000.50 +74 352.35 | OF7 +75 000.11 +74 294.01 |
| | OF4 +75 118.54 +74 347.11 | OF8 +74 977.40 +74 280.34 |
| OF1 +74 966.27 +74 389.37 | OF5 +75 200.00 +74 337.20 | OF9 +74 964.14 +74 258.31 |

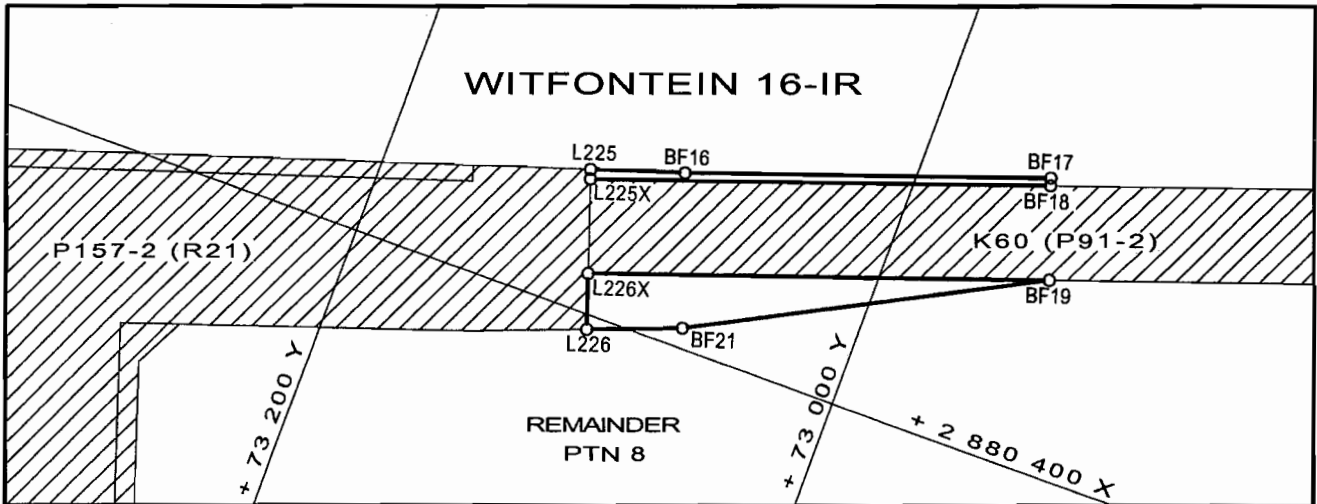
NOTICE 3212 OF 2010**PROCLAMATION OF THE INCREASE IN WIDTH OF A PORTION OF PROVINCIAL ROAD K60: DISTRICT MIDRAND**

In terms of section 11(2) of the Gauteng Transport Infrastructure Act, 2001 (Act No. 8 of 2001) the MEC hereby proclaims the increase in width of a portion of provincial road K60 on the land as described and indicated by the figures on the accompanying sketch plan.

In terms of section 23(6) of the aforementioned act, it is hereby stated that plan GRP 08/16/1 Exp which indicate the land encroached upon by the increase in width of the road in detail, is available for inspection by any interested person during office hours in the Plan Room of the Department of Roads and Transport, Sage Life Building, 41 Simmonds Street, Johannesburg.

Reference: 2/1/1/2/3/1-K60 (2)

MEC Resolution 013 dated 20 July 2010



VERWYSING / REFERENCE

PAD VERBREED
ROAD WIDENED



BESTAANDE PAD
EXISTING ROAD



DIE FIGURE (1) L225, BF16, BF17, BF18, L225X, L225
(2) L226X, BF19, BF21, L226, L226X
VERTEENWOORDIG DIE PROKLAMASIE VAN DIE VERMEERDERING IN
BREEDTE VAN PROVINSIALE PAD K60(P91-2) OOR DIE RESTANT
GEDEELTE 8 VAN DIE PLAAS WITFONTEIN 16-IR MUNISIPALITEIT
MIDRAND SOOS BEDOEL BY AFKONDIGING DAARVAN IN DIE
PROVINSIALE KOERANT EN IN DETAIL GETOON OP
PLAN GRP08/16/1Exp

THE FIGURES (1) L225, BF16, BF17, BF18, L225X, L225
(2) L226X, BF19, BF21, L226, L226X
REPRESENTS THE PROCLAMATION OF THE INCREASE IN WIDTH OF
PROVINCIAL ROAD K60(P91-2) OVER THE REMAINDER PORTION 8
OF THE FARM WITFONTEIN 16-IR MUNICIPALITY MIDRAND AS
INTENDED BY PUBLICATION THEREOF IN THE PROVINCIAL
GAZETTE AND SHOWN IN DETAIL ON PLAN GRP08/16/1Exp

BUNDEL NR. / FILE NO. 2/1/1/2/3/1-K60

KOÖRDINATE LYS / CO-ORDINATE LIST WG 29° KONST. / CONST. Y = ± 0.000 X = +2 800 000.000

| | | |
|------------------------------|------------------------------|------------------------------|
| L225 +73 121.697 +80 345.177 | BF16 +73 086.376 +80 333.630 | BF19 +72 936.607 +80 324.561 |
| L225X+73 120.446 +80 348.835 | BF17 +72 950.113 +80 285.956 | BF21 +73 065.901 +80 392.152 |
| L226 +73 101.043 +80 405.579 | BF18 +72 949.090 +80 288.882 | |
| L226X+73 108.216 +80 384.603 | | |

NOTICE 3213 OF 2010**TAKING OVER OF ALL RESPONSIBILITIES IN CONNECTION WITH PROVINCIAL
ROADS 48 AND 734 BY THE DINOKENG GAME RESERVE MANAGEMENT
ASSOCIATION**

In terms of section 51(1) of the Gauteng Transport Infrastructure Act, 2001 (Act No. 8 of 2001) it is hereby notified for general information that in terms of an agreement entered into between the Dinokeng Game Reserve Management Association (DGRMA) and the Department of Roads and Transport, the aforementioned Association takes over all responsibilities for or in relation to portions of provincial roads 48 and 734, as indicated on the accompanying sketch plan and that the portions of the aforementioned roads are no longer provincial roads for the purposes of the said Act as from the date of this Notice, provided that they remain open for the use of the public, subject to certain access control measures laid down by the said Association.

Details in the above regard can be obtained from the offices of the Department of Roads and Transport, at Sage Life Building, 41 Simmonds Street, Johannesburg or Private Bag X83, Marshalltown 2107, Tel : (011) 355 7264 Fax : (011) 355 7235

MEC Resolution: 010 dated 20 July 2010

Reference: 2/2/3/1-1



VERWYSING / REFERENCE

Toegang Beheer Hekke
Access Control Gates



KOÖRDINATE LYS / CO-ORDINATE LIST

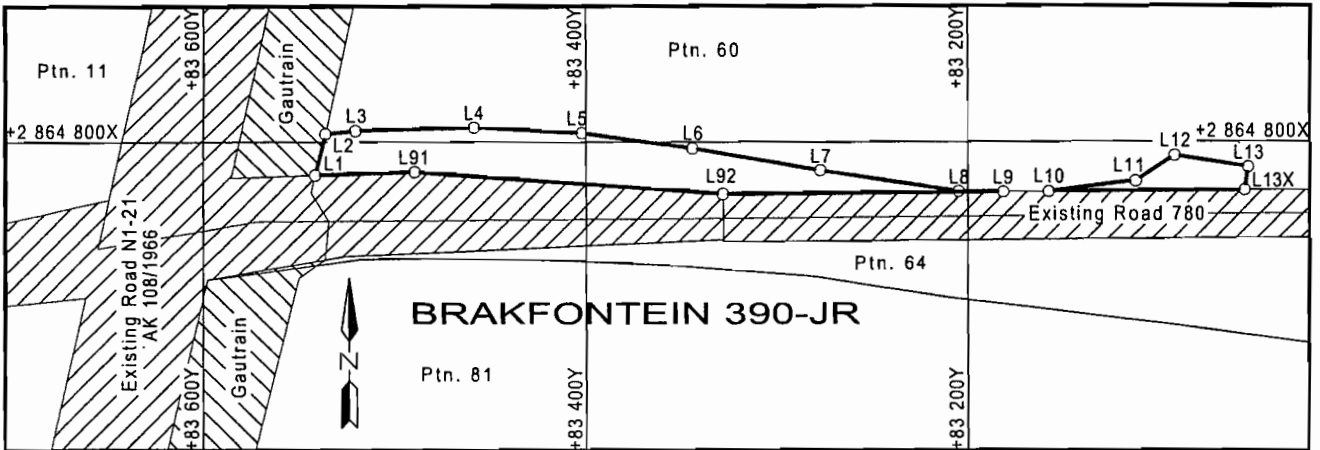
| | | |
|-----------------------------------|-----------------|-----------------|
| North-western entrance (Road 48) | 25° 22' 42.3" S | 28° 18' 33.7" E |
| North-eastern entrance (Road 48) | 25° 19' 17.6" S | 28° 24' 42.7" E |
| South-western entrance (Road 734) | 25° 24' 04.7" S | 28° 18' 24.1" E |
| South-eastern entrance (Road 734) | 25° 26' 25.1" S | 28° 23' 27.0" E |

NOTICE 3214 OF 2010**PROCLAMATION OF A PORTION OF PROVINCIAL ROAD K54: DISTRICT PRETORIA**

In terms of section 11(1)(b) of the Gauteng Transport Infrastructure Act, 2001 (Act No. 8 of 2001) the MEC hereby proclaims that a portion of provincial road K54, with varying widths, exists on the land as described and indicated by the figures on the accompanying sketch plan.

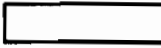
In terms of section 23(6) of the aforementioned act it is hereby stated that plan PRS 88/103/1 Exp which indicates the land affected by the road in detail, is available for inspection at the office of the Department of Roads and Transport, First Floor, South Tower, Sage Life Building, 41 Simmonds Street, Johannesburg, during office hours.

Reference: 2/1/1/2/3/1 – K54



VERWYSING / REFERENCE

PAD GEPROKLAEMEER
ROAD PROCLAIMED



BESTAANDE PAD
EXISTING ROAD



GAUTREIN
GAUTRAIN



DIE FIGURE L1-L9, L92, L91, L1 & L10-L13, L13X, L10 VERTEENWOORDIG DIE PROKLAMASIE VAN DIE BETROKKE GEDEELTE VAN PROVINSIALE PAD K54 OOR GEDEELTE 60 VAN DIE PLAAS BRAK FONTEIN 390 JR SOOS BEDOEL BY AFKONDIGING DAARVAN IN DIE PROVINSIALE KOERANT EN IN DETAIL GETOON OP PLAN PRS 88/103/1EXp

THE FIGURES L1-L9, L92, L91, L1 & L10-L13, L13X, L10 REPRESENT THE PROCLAMATION OF THE PORTION CONCERNED OF PROVINCIAL ROAD K54 OVER PORTION 60 OF THE FARM BRAK FONTEIN 390 JR AS INTENDED BY PUBLICATION THEREOF IN THE PROVINCIAL GAZETTE AND SHOWN IN DETAIL ON PLAN PRS 88/103/1EXp

BUNDEL NR. / FILE NO. (2/1)2/1/1/2/3/1-K54

KOÖRDINATE LYS / CO-ORDINATE LIST L_o 29° KONST. / CONST. Y = ± 0.000 X = +2 800 000.000

| | | | | | | | | |
|----|-------------|-------------|-----|-------------|-------------|------|-------------|-------------|
| L1 | +83 541.792 | +64 817.436 | L7 | +83 277.030 | +64 814.990 | L12 | +83 091.900 | +64 807.150 |
| L2 | +83 536.400 | +64 795.700 | L8 | +83 204.900 | +64 825.930 | L13 | +83 052.377 | +64 813.307 |
| L3 | +83 536.400 | +64 795.700 | L9 | +83 181.518 | +64 826.292 | L13X | +83 054.258 | +64 825.380 |
| L4 | +83 459.060 | +64 792.260 | L10 | +83 161.630 | +64 826.600 | L91 | +83 490.372 | +64 815.710 |
| L5 | +83 402.410 | +64 795.330 | L11 | +83 112.050 | +64 820.560 | L92 | +83 327.915 | +64 827.475 |
| L6 | +83 344.000 | +64 803.290 | | | | | | |

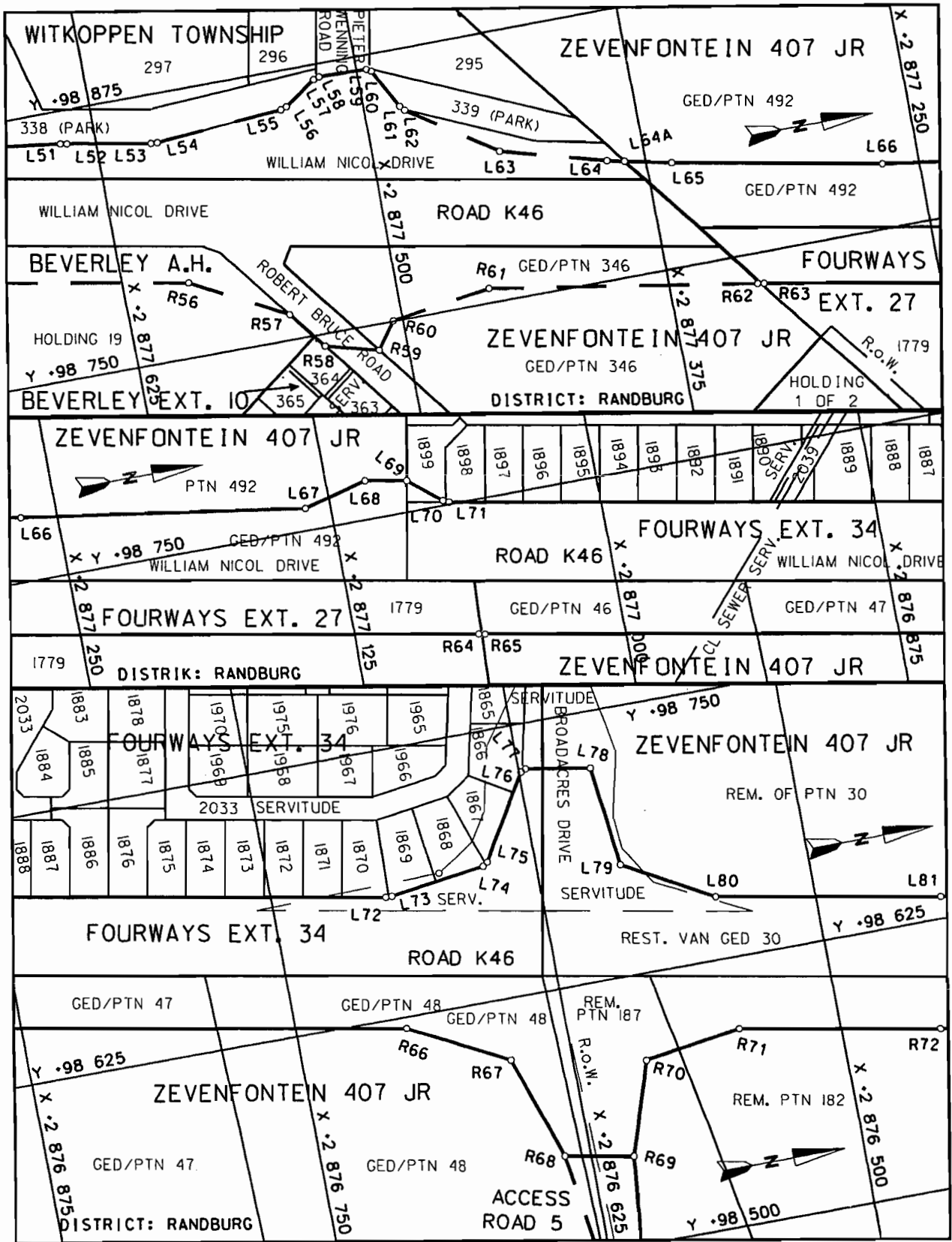
NOTICE 3215 OF 2010**PROCLAMATION OF THE INCREASE IN WIDTH OF A PORTION OF PROVINCIAL ROAD K46: DISTRICT RANDBURG**

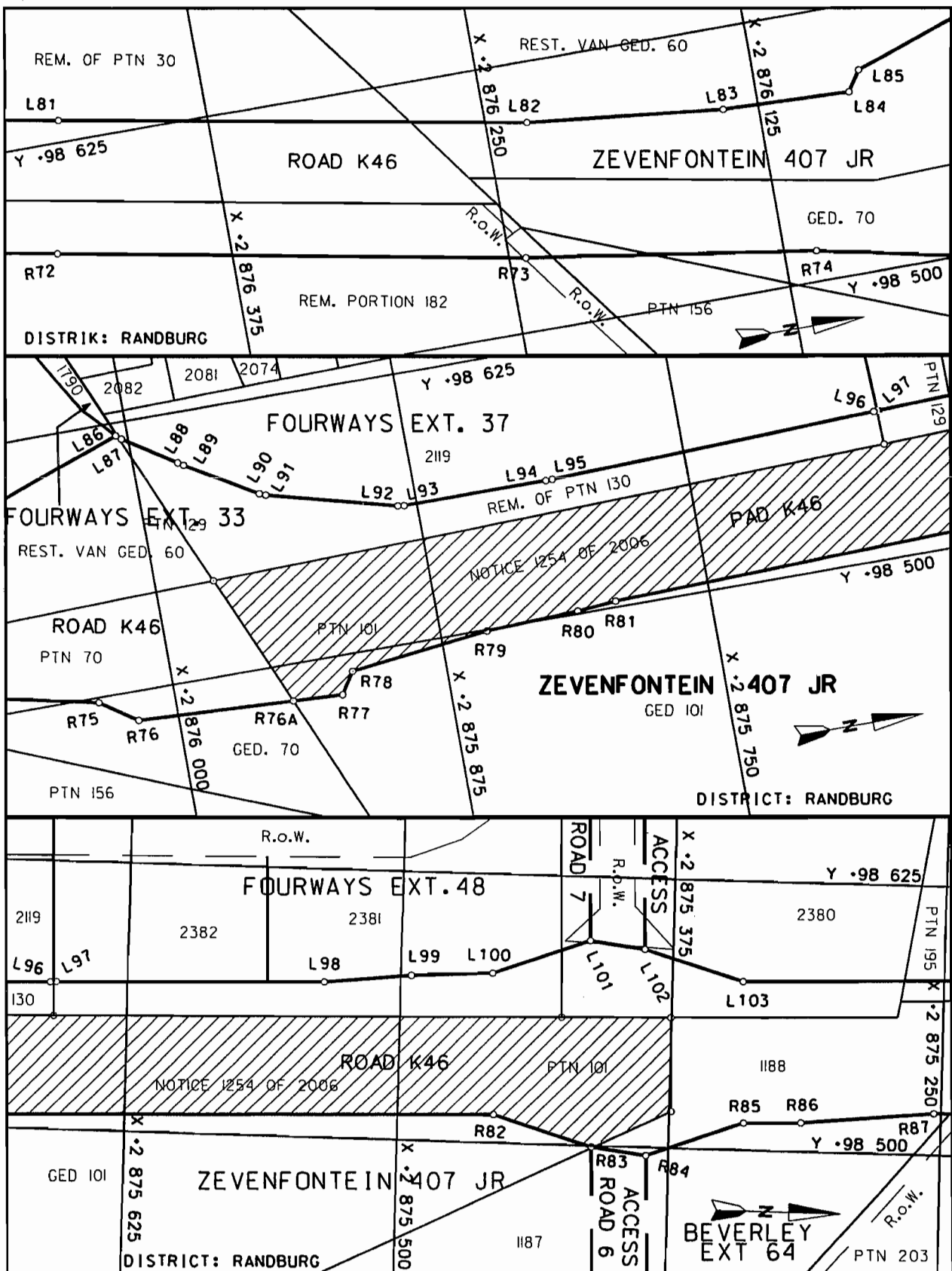
In terms of section 11(2) of the Gauteng Transport Infrastructure Act, 2001 (Act No. 8 of 2001) the MEC hereby proclaims the increase in width of a portion of provincial road K46 on the land as described and indicated by the figures on the accompanying sketch plans.

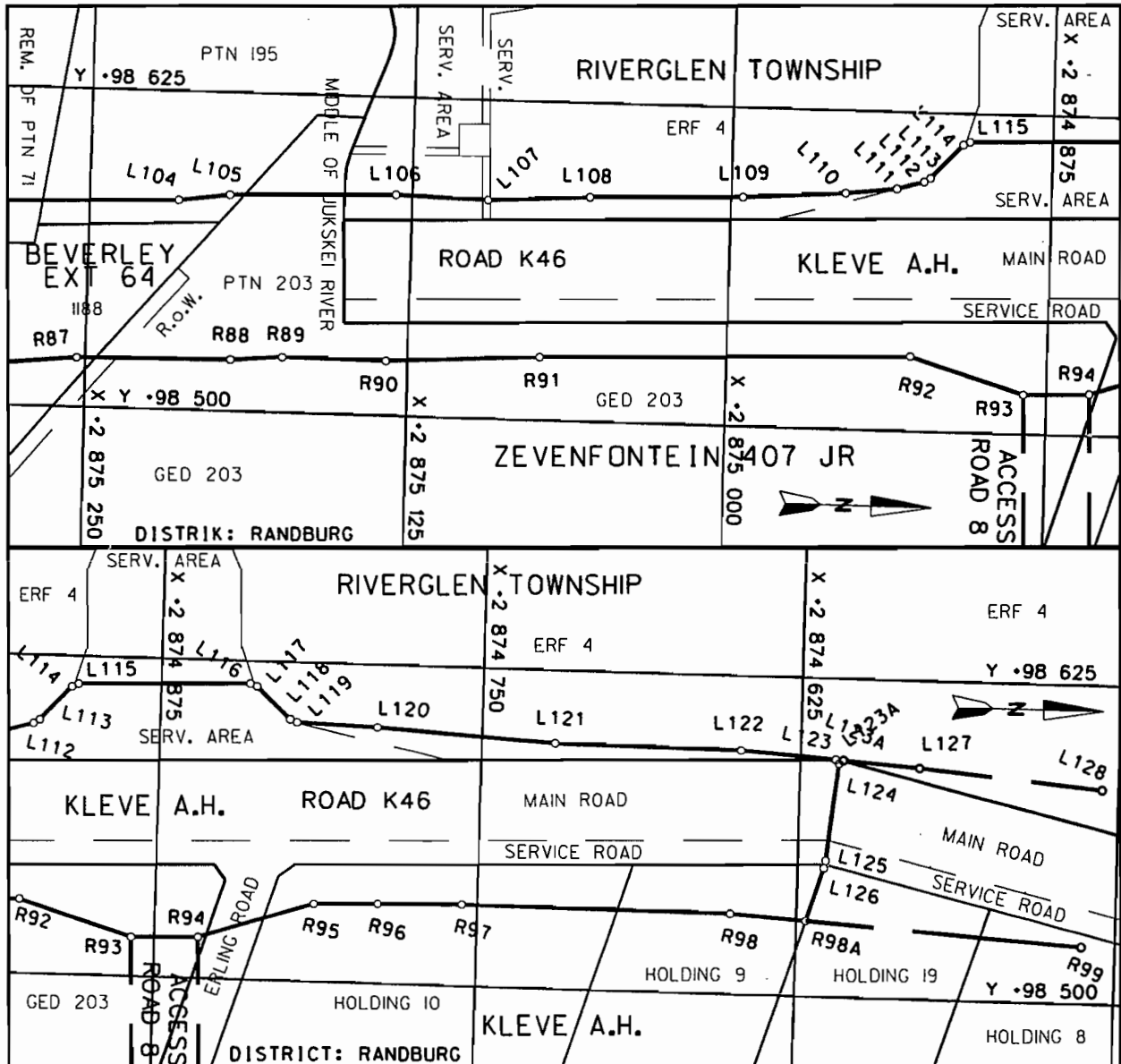
In terms of section 23(6) of the aforementioned act, it is hereby stated that plans GRP 03/46/1Exp1-5Exp which indicate the land encroached upon by the increase in width of the road in detail, are available for inspection by any interested person during office hours in the Plan Room of the Department of Roads and Transport, Sage Life Building, 41 Simmonds Street, Johannesburg.

Reference: 2/1/1/2/3/1-K46 (1)

MEC Resolution 013 dated 22 June 2009





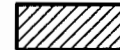


REFERENCE / VERWYSINGS

PAD GEPROKLAAMEER
ROAD PROCLAIMED



BESTAANDE PAD
EXISTING ROAD

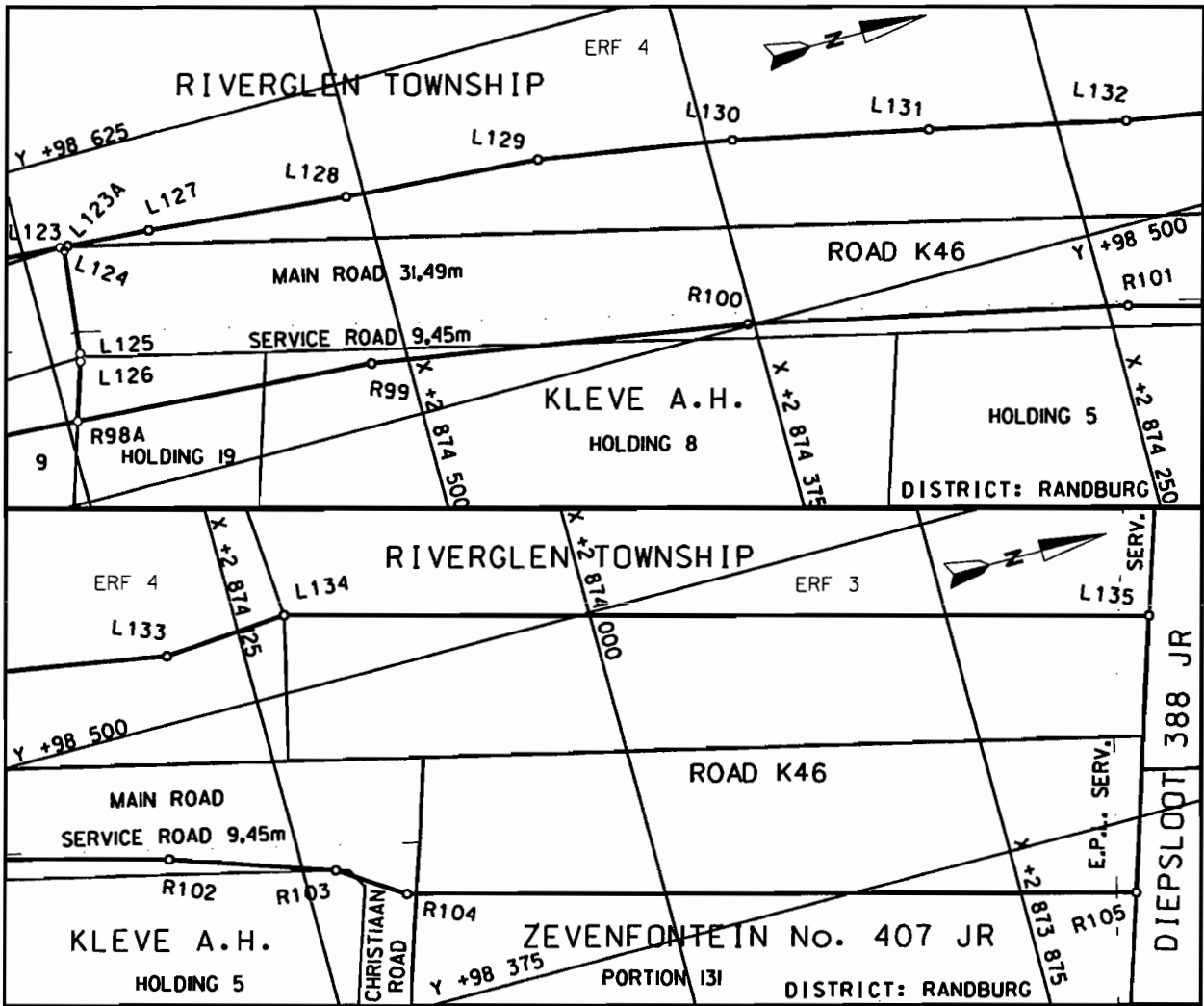


DIE FIGUUR : L64A.L66-L126.R98A.R98-R63.2128.L64A.
THE FIGURE :

VERTEENWOORDIG DIE PROKLAMASIE VAN DIE BETROKKE GEDEELTE VAN PROVINSIALE PAD K46 OOR GEDEELTES 492.129.195.46.47.48.156.70.101.203 EN RESTANT VAN GEDEELTES 30.60.71.130.182 EN 187 VAN DIE PLAAS ZEVENFONTEIN 407 JR EN ERF 1899 VAN DIE DORP FOURWAYS UITB.34.ERF 2119 VAN DIE DORP FOURWAYS UITB.37.ERF 4 VAN DIE DORP RIVERGLEN EN ERF 1779 VAN DIE DORP FOURWAYS UITB.27.ERF 1188 VAN DIE DORP BEVERLEY UITB. 64 EN HOEWES 10 EN 9 VAN KLEVE LANBOU HOEWES SOOS BEDOEL BY AFKONDIGING DAARVAN IN DIE PROVINSIALE KOERANT EN IN DETAIL GETOON OP PLANNE GRP 03/46/2Exp-5Exp.

REPRESENTS THE PROCLAMATION OF THE PORTION CONCERNED OF PROVINCIAL ROAD K46 OVER PORTIONS 492.129.195.46.47.48.156.70.101.203 AND REMAINDER OF PORTIONS 30.60.71.130.182 AND 187 OF THE FARM ZEVENFONTEIN 407 JR AND ERF 1899 OF THE TOWNSHIP FOURWAYS EXT.34.ERF 2119 OF THE TOWNSHIP FOURWAYS EXT.37.ERF 4 OF THE TOWNSHIP RIVERGLEN AND ERF 1779 OF THE TOWNSHIP FOURWAYS EXT.27.ERF 1188 OF THE TOWNSHIP BEVERLEY EXT. 64 AND HOLDINGS 10 AND 9 OF KLEVE AGRICULTURAL HOLDINGS AS INTENDED BY PUBLICATION THEREOF IN THE PROVINCIAL GAZETTE AND SHOWN IN DETAIL ON PLANS GRP 03/46/2Exp-5Exp.

| KÖÖRDINATE LYS/CO-ORDINATE LIST WG 29° KONST./CONST. Y- +/- 0.00 X- +2 800 000.00 | | | | | | | | |
|---|------------|------------|------|------------|------------|------|------------|------------|
| L64A | +98593.064 | +74609.732 | L98 | +98572.706 | +75535.088 | R68 | +98547.156 | +76637.009 |
| L64 | +98805.305 | +77392.666 | L99 | +98576.924 | +75495.198 | R69 | +98541.337 | +76605.543 |
| L66 | +98780.390 | +77267.103 | L100 | +98579.067 | +75457.746 | R70 | +98584.496 | +76591.460 |
| L67 | +98760.545 | +77136.535 | L101 | +98595.432 | +75413.224 | R71 | +98591.427 | +76546.449 |
| L68 | +98768.237 | +77106.638 | L102 | +98592.196 | +75388.114 | R72 | +98574.334 | +76454.016 |
| L69 | +98764.673 | +77087.368 | L103 | +98578.575 | +75342.677 | R73 | +98534.684 | +76242.347 |
| L70 | +98752.294 | +77072.478 | L104 | +98582.462 | +75215.237 | R74 | +98514.216 | +76110.207 |
| L71 | +98751.061 | +77069.849 | L105 | +98585.071 | +75195.307 | R75 | +98497.768 | +76035.094 |
| L72 | +98682.043 | +76697.105 | L106 | +98587.022 | +75131.337 | R76 | +98486.489 | +76018.504 |
| L73 | +98681.971 | +76694.143 | L107 | +98586.120 | +75095.292 | R77 | +98481.960 | +75924.275 |
| L74 | +98687.999 | +76649.487 | L108 | +98588.339 | +75055.341 | R78 | +98491.812 | +75917.904 |
| L75 | +98689.485 | +76647.226 | L109 | +98590.169 | +74995.369 | R79 | +98499.408 | +75853.692 |
| L76 | +98728.085 | +76623.974 | L110 | +98592.887 | +74955.434 | R80 | +98501.262 | +75811.001 |
| L77 | +98729.112 | +76621.722 | L111 | +98595.104 | +74935.492 | R81 | +98502.809 | +75793.077 |
| L78 | +98723.940 | +76592.115 | L112 | +98598.102 | +74924.902 | R82 | +98513.098 | +75455.734 |
| L79 | +98677.144 | +76586.531 | L113 | +98599.604 | +74922.431 | R83 | +98499.477 | +75410.297 |
| L80 | +98654.393 | +76545.992 | L114 | +98612.872 | +74909.951 | R84 | +98496.241 | +75385.187 |
| L81 | +98635.301 | +76442.743 | L115 | +98614.011 | +74907.424 | R85 | +98512.606 | +75340.665 |
| L82 | +98596.634 | +76230.891 | L116 | +98616.049 | +74840.448 | R86 | +98513.414 | +75314.177 |
| L83 | +98586.727 | +76141.230 | L117 | +98615.067 | +74837.856 | R87 | +98519.271 | +75253.328 |
| L84 | +98584.631 | +76083.190 | L118 | +98602.587 | +74824.597 | R88 | +98520.101 | +75193.325 |
| L85 | +98594.057 | +76077.272 | L119 | +98601.506 | +74822.006 | R89 | +98521.710 | +75173.365 |
| L86 | +98619.165 | +76005.275 | L120 | +98600.406 | +74790.932 | R90 | +98521.430 | +75133.338 |
| L87 | +98617.251 | +76002.993 | L121 | +98596.338 | +74721.384 | R91 | +98524.759 | +75073.411 |
| L88 | +98601.909 | +75979.447 | L122 | +98595.753 | +74648.250 | R92 | +98529.179 | +74928.479 |
| L89 | +98600.320 | +75976.903 | L123 | +98593.168 | +74611.229 | R93 | +98515.528 | +74884.042 |
| L90 | +98581.310 | +75945.127 | L124 | +98591.573 | +74609.897 | R94 | +98516.320 | +74858.054 |
| L91 | +98580.157 | +75942.390 | L125 | +98553.491 | +74614.110 | R95 | +98530.686 | +74813.471 |
| L92 | +98564.683 | +75883.840 | L126 | +98550.571 | +74614.730 | R96 | +98531.438 | +74788.829 |
| L93 | +98564.298 | +75880.890 | R63 | +98735.650 | +77331.414 | R97 | +98532.164 | +74756.041 |
| L94 | +98564.202 | +75814.440 | R64 | +98687.430 | +77067.646 | R98 | +98531.803 | +74650.789 |
| L95 | +98564.246 | +75811.441 | R65 | +98686.889 | +77064.695 | R98A | +98529.814 | +74621.344 |
| L96 | +98568.844 | +75660.719 | R66 | +98619.611 | +76698.865 | 2128 | +98254.551 | +76966.173 |
| L97 | +98568.936 | +75657.721 | R67 | +98595.951 | +76653.410 | | | |



REFERENCE / VERWYSINGS

PAD GEPROKLAMEER
ROAD PROCLAIMED



DIE FIGUUR : L126-L123.L123A.L127-L135.R105-R99.R98A.L126.
THE FIGURE :

VERTEENWOORDIG DIE PROKLAMASIE VAN DIE BETROKKE GEDEELTE VAN PROVINSIALE PAD K46 OOR ERWE 3 EN 4 VAN DIE DORP RIVERGLEN EN HOEWES 19.8 EN 5 VAN KLEVE LANDBOU HOEWES EN GEDEELTE 131 VAN DIE PLAAS ZEVENFONTEIN 407 JR SOOS BEDOEL BY AFKONDIGING DAARVAN IN DIE PROVINSIALE KOERANT EN IN DETAIL GETOON OP PLAN GRP 03/46/5Exp.

REPRESENTS THE PROCLAMATION OF THE PORTION CONCERNED OF PROVINCIAL ROAD K46 OVER ERVEN 3 AND 4 OF THE TOWNSHIP RIVERGLEN AND HOLDINGS 19.8 AND 5 OF KLEVE AGRICULTURAL HOLDINGS AND PORTION 131 OF THE FARM ZEVENFONTEIN 407 JR AS INTENDED BY PUBLICATION THEREOF IN THE PROVINCIAL GAZETTE AND SHOWN IN DETAIL ON PLAN GRP 03/46/5Exp.

BUNDEL NR. / FILE NO. 1/1/1/2/3/1-K46(1)

KOÖRDINATE LYS/CO-ORDINATE LIST WG 29° KONST./CONST. Y- +/- 0.00 X- +2 800 000.00

| | | | | | | | | |
|-------|------------|------------|------|------------|------------|------|------------|------------|
| L123 | +98593.168 | +74611.229 | L130 | +98567.590 | +74365.174 | R100 | +98500.685 | +74377.327 |
| L123A | +98592.954 | +74608.236 | L131 | +98552.660 | +74295.546 | R101 | +98471.283 | +74242.533 |
| L124 | +98591.573 | +74609.897 | L132 | +98537.172 | +74225.721 | R102 | +98451.847 | +74170.406 |
| L125 | +98553.491 | +74614.110 | L133 | +98524.518 | +74151.862 | R103 | +98432.269 | +74113.479 |
| L126 | +98550.571 | +74614.730 | L134 | +98528.153 | +74107.464 | R104 | +98416.987 | +74090.420 |
| L127 | +98590.766 | +74578.337 | L135 | +98445.776 | +73803.703 | R105 | +98348.270 | +73834.726 |
| L128 | +98584.148 | +74506.545 | R98A | +98529.814 | +74621.344 | | | |
| L129 | +98579.090 | +74435.461 | R99 | +98522.520 | +74513.331 | | | |

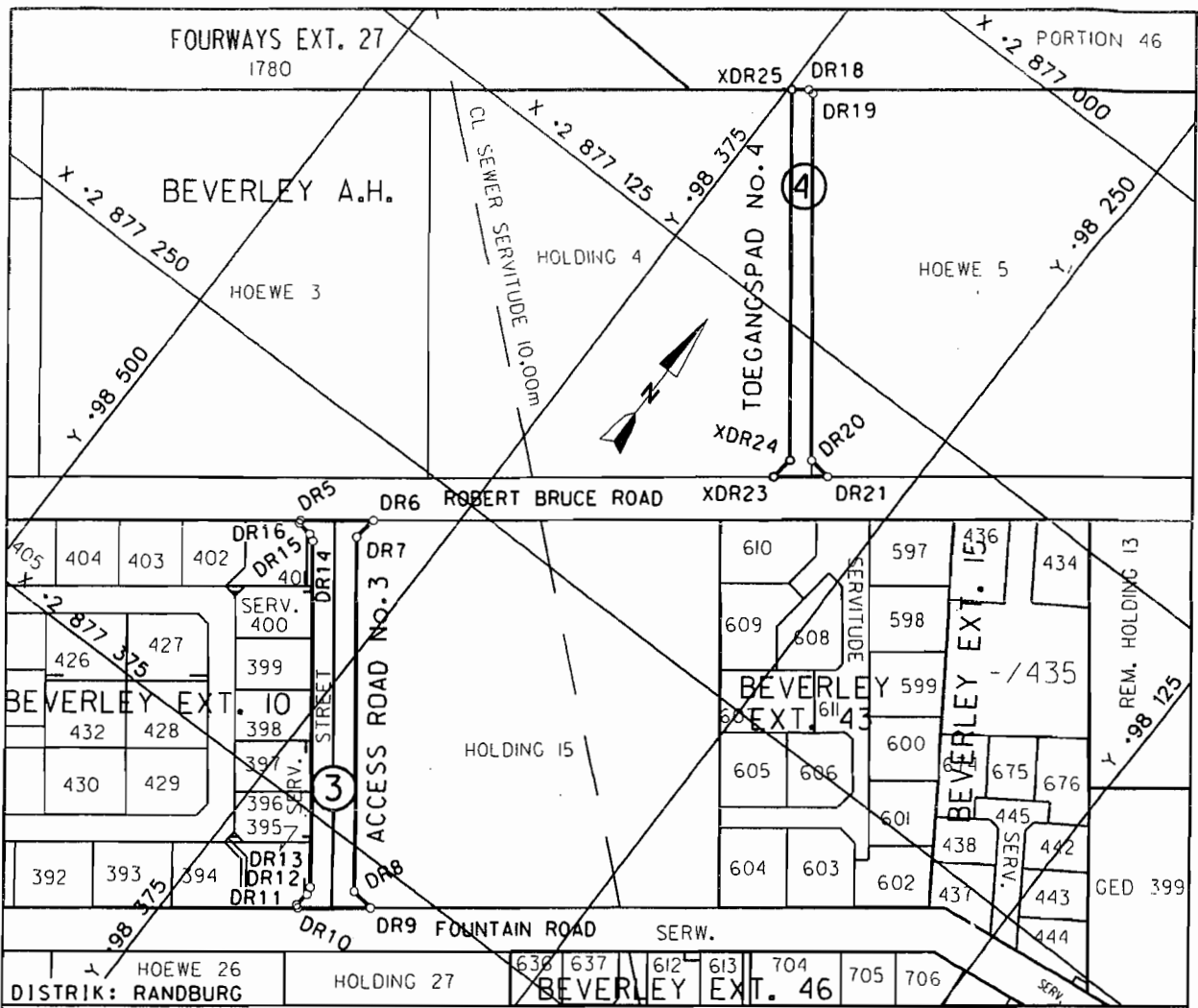
NOTICE 3216 OF 2010**PROCLAMATION OF ACCESS ROADS IN CONNECTION WITH PROVINCIAL ROAD K46: DISTRICT RANDBURG**

In terms of section 13(1) of the Gauteng Transport Infrastructure Act, 2001 (Act No. 8 of 2001) the MEC hereby proclaims access roads in connection with provincial road K46 as described and indicated by the figures on the accompanying sketch plans.

In terms of section 23(6) of the aforementioned act, it is hereby declared that boundary beacons demarcating the said access roads, have been placed and that plans GRP 03/46/1 Exp, 3 Exp and 5 Exp indicating the land encroached upon by virtue of the proclamation of the access roads, are available for inspection by any interested person in the Plan Room of the Department of Roads and Transport, Sage Life Building, 41 Simmonds Street, Johannesburg.

Reference: 2/1/1/2/3/1-K46 (1)

MEC Resolution 013 Dated 22 June 2009



REFERENCE / VERWYSINGS

TOEGANGSPAD GEPROKLAAMEER
ACCESS ROAD PROCLAIMED

DIE FIGURE :(3) DR5-DR10.3516.DR11-DR12.3517.DR13-DR14.3518.DR15-DR16.3519.DR5
THE FIGURES:(4) DR17-DR18.3212.DR19-DR23.DR17

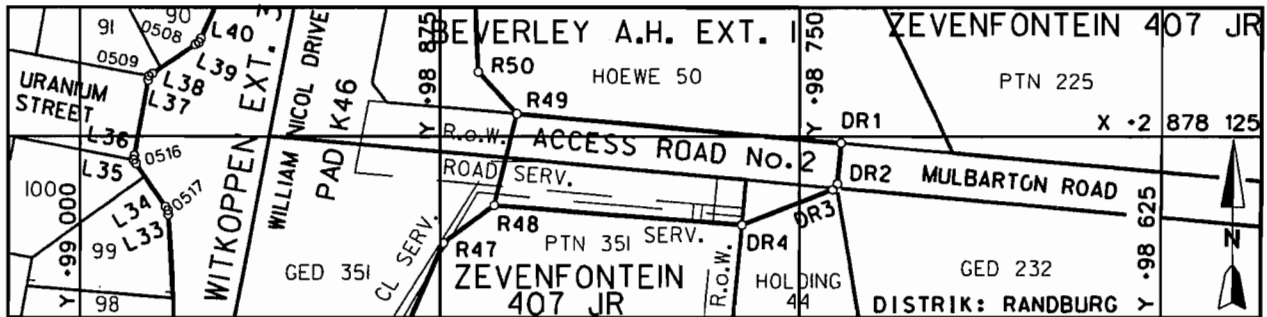
VERTEENWOORDIG DIE PROKLAMASIE VAN DIE BETROKKE GEDEELTES VAN TOEGANGSPAD Nr.3 EN TOEGANGSPAD Nr.4 OOR HOEWES 4,5 EN 15 VAN BEVERLEY LANDBOU HOEWES EN N STRAAT IN BEVERLEY UITBREIDING 10 SOOS BEDOEL BY DIE AFKONDIGING DAARVAN IN DIE PROVINSIALE KOERANT EN IN DETAIL GETOON OP PLAN GRP 03/46/3Exp.

REPRESENT THE PROCLAMATION OF THE PORTIONS CONCERNED OF ACCESS ROAD No.3 AND ACCESS ROAD No.4 OVER HOLDINGS 4,5 AND 15 OF BEVERLEY AGRICULTURAL HOLDINGS AND A STREET IN BEVERLEY EXTENTION 10 AS INTENDED BY PUBLICATION THEREOF IN THE PROVINCIAL GAZETTE AND SHOWN IN DETAIL ON PLAN GRP 03/46/3Exp.

BUNDEL NR. / FILE NO. 1/1/1/2/3/1-K46(1)

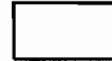
KOÖRDINATE LYS/CO-ORDINATE LIST WG 29° KONST./CONST. Y= +/- 0.00 X= +2 800 000.00

| | | | | | | | | |
|------|------------|------------|------|------------|------------|-------|------------|------------|
| DR5 | +98421.015 | +77291.894 | DR12 | +98334.837 | +77399.357 | DR20 | +98284.754 | +77160.540 |
| DR6 | +98399.934 | +77275.837 | DR13 | +98335.545 | +77396.677 | DR21 | +98276.345 | +77161.673 |
| DR7 | +98401.072 | +77284.246 | DR14 | +98412.891 | +77295.134 | DR22 | +98298.611 | +77178.650 |
| DR8 | +98321.908 | +77388.175 | DR15 | +98415.286 | +77293.740 | DR23 | +98297.478 | +77170.241 |
| DR9 | +98313.499 | +77389.312 | DR16 | +98420.722 | +77293.004 | XDR23 | +98292.227 | +77173.830 |
| DR10 | +98334.580 | +77405.370 | DR18 | +98368.627 | +77053.008 | XDR24 | +98291.103 | +77165.408 |
| DR11 | +98335.572 | +77404.792 | DR19 | +98366.524 | +77053.292 | XDR25 | +98373.799 | +77056.946 |



REFERENCE / VERWYSINGS

TOEGANGSPAD GEPROKLAAMEER
ACCESS ROAD PROCLAIMED



DIE FIGUUR : R48.R49.DR1.DR2.3129.DR3.DR4.R48
THE FIGURE : R48.R49.DR1.DR2.3129.DR3.DR4.R48

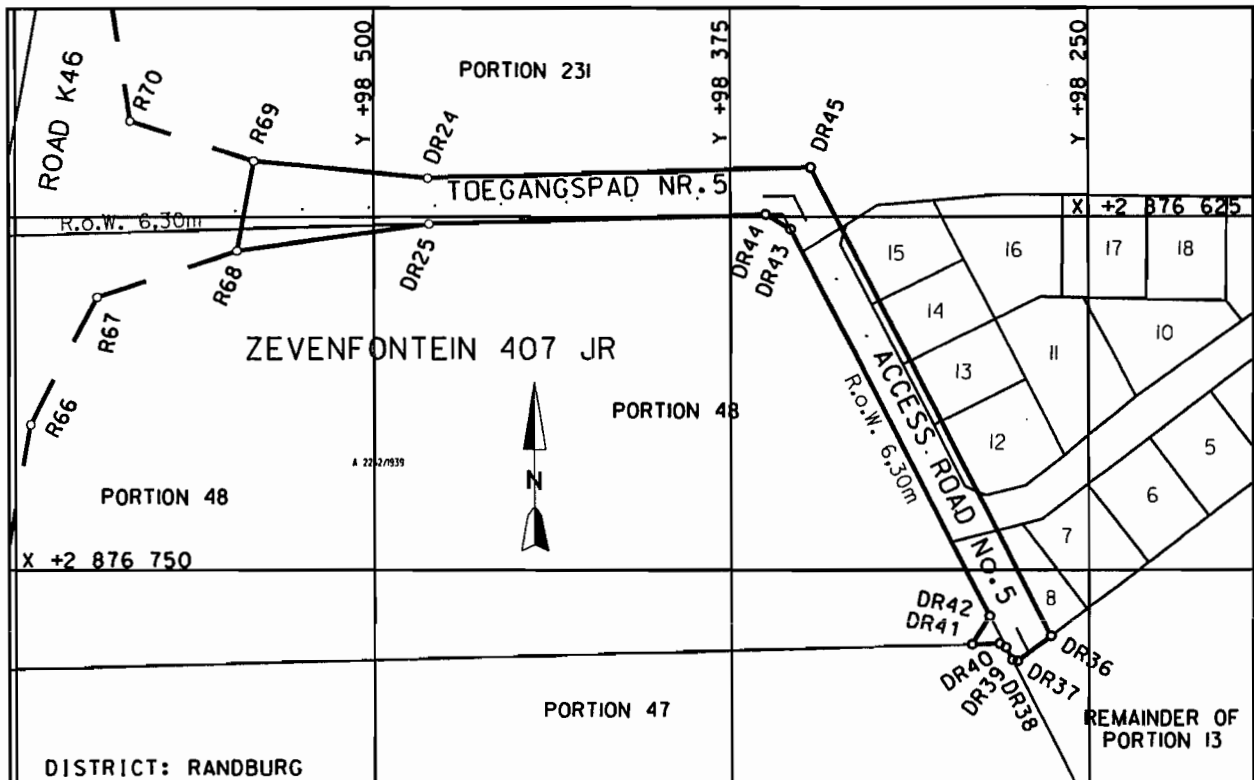
VERTEENWOORDIG DIE PROKLAMASIE VAN DIE BETROKKE GEDEELTE VAN TOEGANGSPAD Nr.2 NA PROVINSIALE PAD K46 OOR GEDEELTE 351 VAN DIE PLAAS ZEVENFONTEIN 407 JR EN HOEWES 44 EN 50 VAN BEVERLEY LANDBOU HOEWES UITBREIDING 1 SOOS BEDOEL BY DIE AFKONDIGING DAARVAN IN DIE PROVINSIALE KOERANT EN IN DETAIL GETOON OP PLAN GRP 03/46/1Exp.

REPRESENTS THE PROCLAMATION OF THE PORTION CONCERNED OF ACCESS ROAD No.2 TO PROVINCIAL ROAD K46 OVER PTN 351 OF THE FARM ZEVENFONTEIN 407 JR AND HOLDINGS 44 AND 50 OF BEVERLEY AGRICULTURAL HOLDINGS EXT.1 AS INTENDED BY PUBLICATION THEREOF IN THE PROVINCIAL GAZETTE AND SHOWN IN DETAIL ON PLAN GRP 03/46/1Exp.

BUNDEL NR. / FILE NO. 1/1/1/2/3/1-K46(1)

KOÖRDINATE LYS/CO-ORDINATE LIST WG 29° KONST./CONST. Y+ +/- 0.00 X+ +2 800 000.00

| | | | | | | | | |
|-----|------------|------------|-----|------------|------------|------|------------|------------|
| R48 | +98856.244 | +78149.012 | DR2 | +98736.943 | +78141.553 | 3129 | +98737.079 | +78143.047 |
| R49 | +98848.300 | +78117.052 | DR3 | +98738.477 | +78143.591 | | | |
| DR1 | +98735.644 | +78127.368 | DR4 | +98769.944 | +78155.839 | | | |



REFERENCE / VERWYSINGS

TOEGANGSPAD GEPROKLAMEER
ACCESS ROAD PROCLAIMED

DIE FIGUUR : R68-R69, DR24, DR45, DR36-DR44, DR25, R68
THE FIGURE :

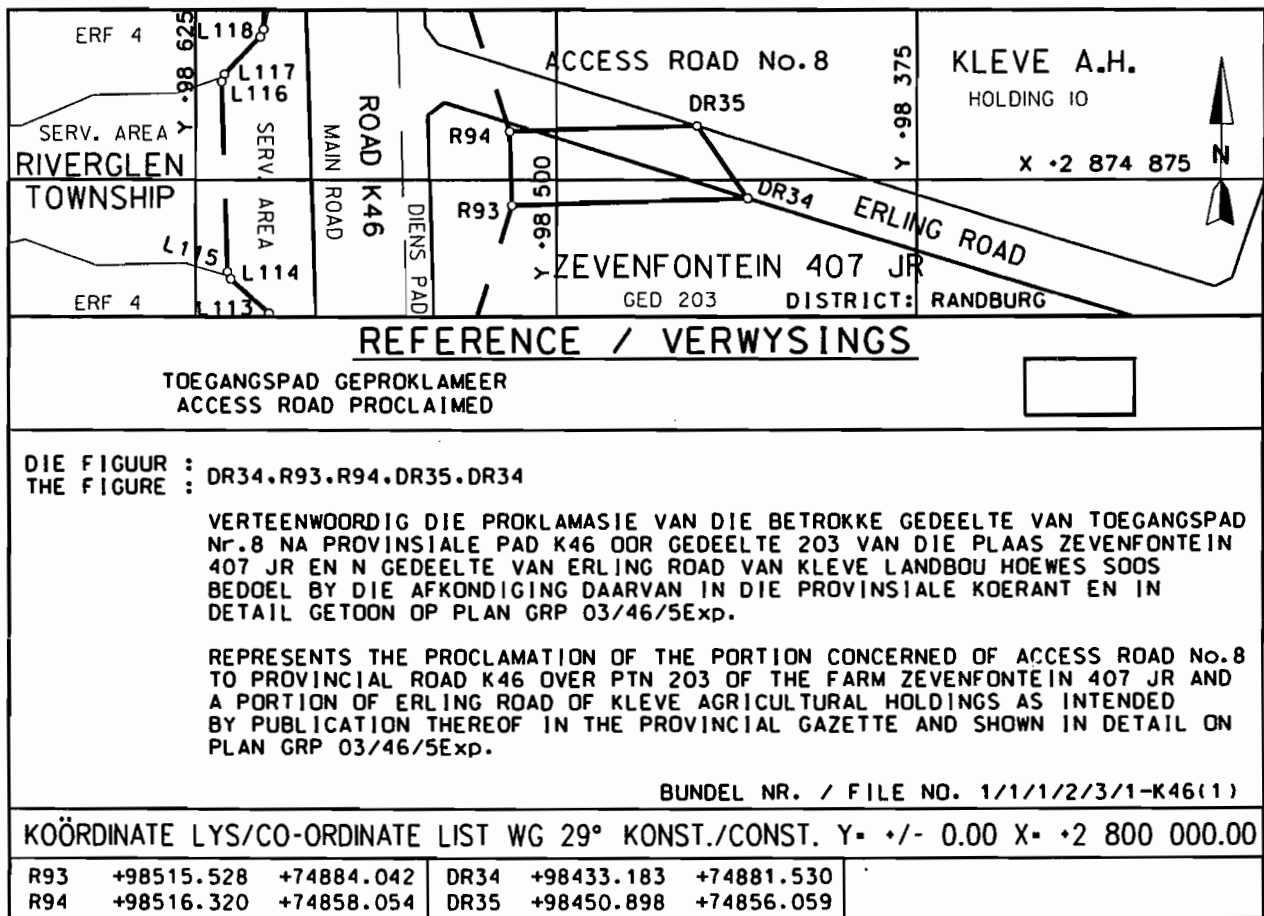
VERTEENWOORDIG DIE PROKLAMASIE VAN DIE BETROKKE GEDEELTE VAN TOEGANGSPAD Nr. 5 NA PROVINSIALE PAD K46 OOR GEDEELTES 48 EN 231 VAN DIE PLAAS ZEVENFONTEIN 407 JR SOOS BEDOEL BY DIE AFKONDIGING DAARVAN IN DIE PROVINSIALE KOERANT EN IN DETAIL GETOON OP PLAN GRP 03/46/3Exp.

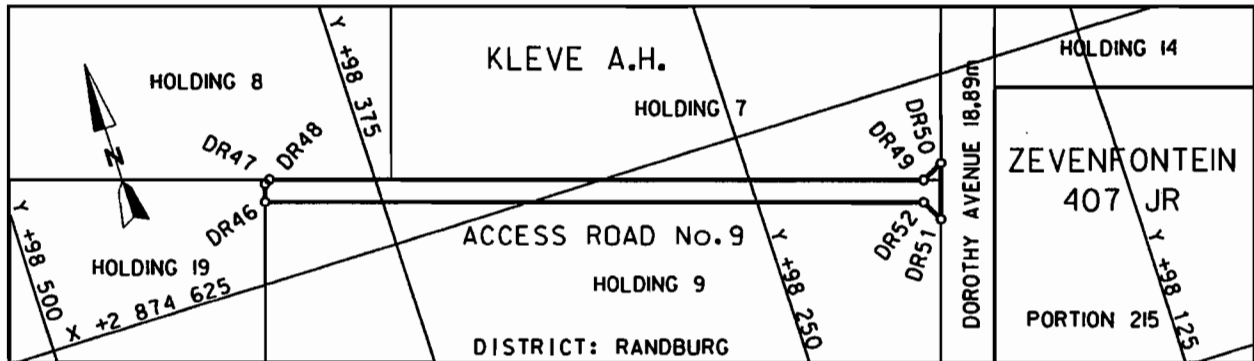
REPRESENTS THE PROCLAMATION OF THE PORTION CONCERNED OF ACCESS ROAD No. 5 TO PROVINCIAL ROAD K46 OVER PTN 48 AND PTN 231 OF THE FARM ZEVENFONTEIN 407 JR AS INTENDED BY PUBLICATION THEREOF IN THE PROVINCIAL GAZETTE AND SHOWN IN DETAIL ON PLAN GRP 03/46/3Exp.

BUNDEL NR. / FILE NO. 1/1/1/2/3/1-K46(1)

KOÖRDINATE LYS/CO-ORDINATE LIST WG 29° KONST./CONST. Y= +/- 0.00 X= +2 800 000.00

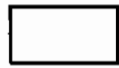
| | | | | | | | | |
|------|------------|------------|------|------------|------------|------|------------|------------|
| R68 | +98547.156 | +76637.009 | DR36 | +98263.494 | +76773.366 | DR41 | +98291.077 | +76776.300 |
| R69 | +98541.337 | +76605.543 | DR37 | +98275.245 | +76782.323 | DR42 | +98285.032 | +76766.178 |
| DR24 | +98481.153 | +76611.434 | DR38 | +98277.113 | +76781.892 | DR43 | +98353.938 | +76629.382 |
| DR25 | +98480.714 | +76627.428 | DR39 | +98279.406 | +76777.341 | DR44 | +98362.635 | +76624.188 |
| | | | DR40 | +98281.580 | +76776.042 | DR45 | +98346.920 | +76607.750 |





REFERENCE / VERWYSINGS

TOEGANGSPAD GEPROKLAEMEER
ACCESS ROAD PROCLAIMED



DIE FIGUUR : DR46-DR52.DR46
THE FIGURE :

VERTEENWOORDIG DIE PROKLAMASIE VAN DIE BETROKKE GEDEELTE VAN TOEGANGSPAD Nr.9 NA DOROTHY LAAN OOR HOEWE 7 EN HOEWE9 VAN KLEVE LANDBOU HOEWES SOOS BEDOEL BY DIE AFKONDIGING DAARVAN IN DIE PROVINSIALE KOERANT EN IN DETAIL GETOON OP PLAN GRP 03/46/5Exp.

REPRESENTS THE PROCLAMATION OF THE PORTION CONCERNED OF ACCESS ROAD No.9 TO DOROTHY AVENUE OVER HOLDING 7 AND HOLDING 9 OF KLEVE AGRICULTURAL-HOLDINGS AS INTENDED BY BUPLUCATION THEREOF IN THE PROVINCIAL GAZETTE AND SHOWN IN DETAIL ON PLAN GRP 03/46/5Exp.

BUNDEL NR. / FILE NO. 1/1/1/2/3/1-K46(1)

KOÖRDINATE LYS/CO-ORDINATE LIST WG 29° KONST./CONST. Y= +/- 0.00 X= +2 800 000.00

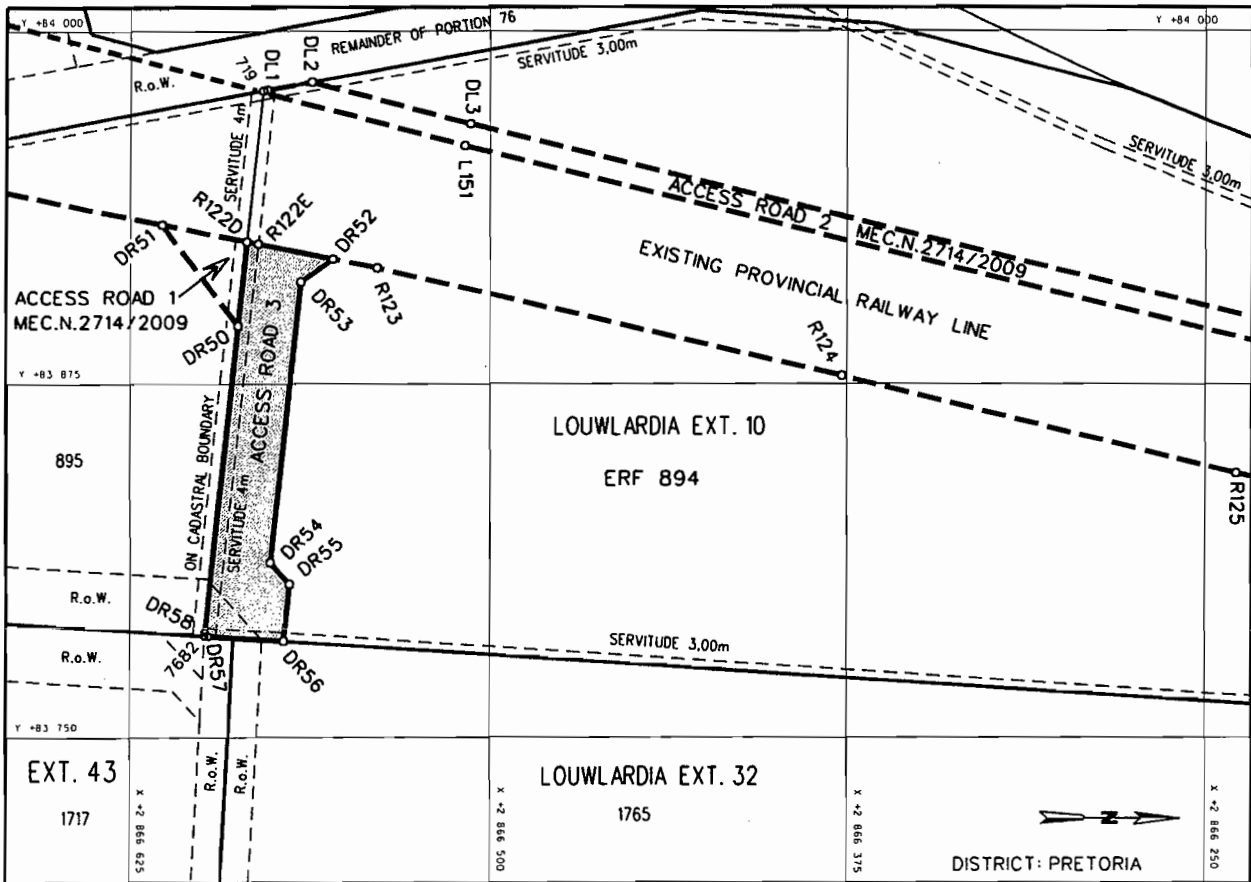
| | | | | | | | | |
|------|------------|------------|------|------------|------------|------|------------|------------|
| DR46 | +98413.886 | +74596.867 | DR49 | +98192.360 | +74659.056 | DR51 | +98190.893 | +74674.217 |
| DR47 | +98411.912 | +74590.673 | DR50 | +98184.821 | +74655.161 | DR52 | +98194.789 | +74666.678 |
| DR48 | +98410.028 | +74589.699 | | | | | | |

NOTICE 3217 OF 2010**PROCLAMATION OF AN ACCESS ROAD IN CONNECTION WITH THE GAUTRAIN RAPID RAIL LINK BETWEEN PRETORIA, JOHANNESBURG AND THE O R TAMBO INTERNATIONAL AIRPORT**

In terms of section 13(1) of the Gauteng Transport Infrastructure Act, 2001 (Act No. 8 of 2001) the MEC hereby proclaims that an access road, with varying widths, exists on the land as described and indicated by the figure on the accompanying sketch plan.

In terms of section 23(6) of the aforementioned act it is hereby stated that plan GRP 03/38/29Exp which indicates the land encroached upon by the access road in detail is available for inspection during office hours at the office of the Department of Roads and Transport, First Floor, South Tower, Sage Life Building, 41 Simmonds Street, Johannesburg.

Reference: 2/1/7/8 Gautrain



REFERENCE

PROCLAIMED ACCESS ROAD



THE FIGURE : R122D, DR52 - DR57, 7682, DR58, DR50, R122D.

REPRESENTS THE PROCLAMATION OF THE ACCESS ROAD OVER ERF 894 IN LOUWLARDIA EXTENSION 10 AS INTENDED BY THE PUBLICATION THEREOF IN THE PROVINCIAL GAZETTE AND SHOWN IN DETAIL ON PLAN GRP 03/38/29Exp.

BUNDEL NR. / FILE NO. 2/1/7/8-GAUTRAIN

CO-ORDINATE LIST WG 29° CONST. Y= +/- 0.00 X= +2 800 000.00

| | | | | | | | | |
|------|------------|------------|------|------------|------------|------|------------|------------|
| DR50 | +83895.397 | +66587.532 | DR54 | +83811.587 | +66576.165 | DR57 | +83785.850 | +66597.449 |
| DR52 | +83919.133 | +66554.666 | DR55 | +83804.050 | +66569.475 | DR58 | +83787.440 | +66598.790 |
| DR53 | +83910.997 | +66565.801 | DR56 | +83784.144 | +66571.550 | 7682 | +83785.959 | +66598.966 |