

*THE PROVINCE OF  
GAUTENG*

*DIE PROVINSIE  
GAUTENG*

**Provincial Gazette Extraordinary  
Buitengewone Provinsiale Koerant**

**Vol. 16**

**PRETORIA, 24 NOVEMBER 2010**

**No. 205**

**IMPORTANT NOTICE**

The Government Printing Works will not be held responsible for faxed documents not received due to errors on the fax machine or faxes received which are unclear or incomplete. Please be advised that an "OK" slip, received from a fax machine, will not be accepted as proof that documents were received by the GPW for printing. If documents are faxed to the GPW it will be the sender's responsibility to phone and confirm that the documents were received in good order.

Furthermore the Government Printing Works will also not be held responsible for cancellations and amendments which have not been done on original documents received from clients.

---

**CONTENTS • INHOUD**

<i>No.</i>	<i>Page No.</i>	<i>Gazette No.</i>
<b>GENERAL NOTICE</b>		
3342	3	205
Gauteng Transport Infrastructure Act (8/2001): Proclamation of a provincial railway line in connection with the Gautrain Rapid Rail Link between Pretoria, Johannesburg and the OR Tambo International Airport.....		

---

---

## GENERAL NOTICE

---

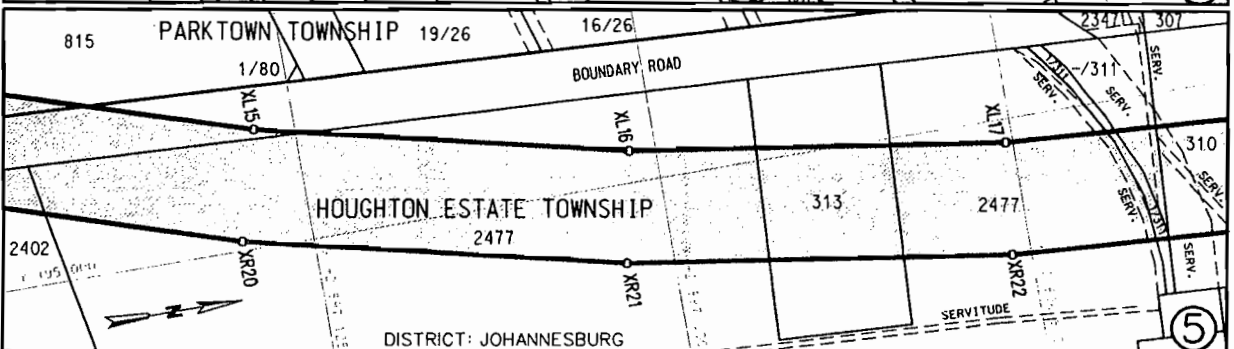
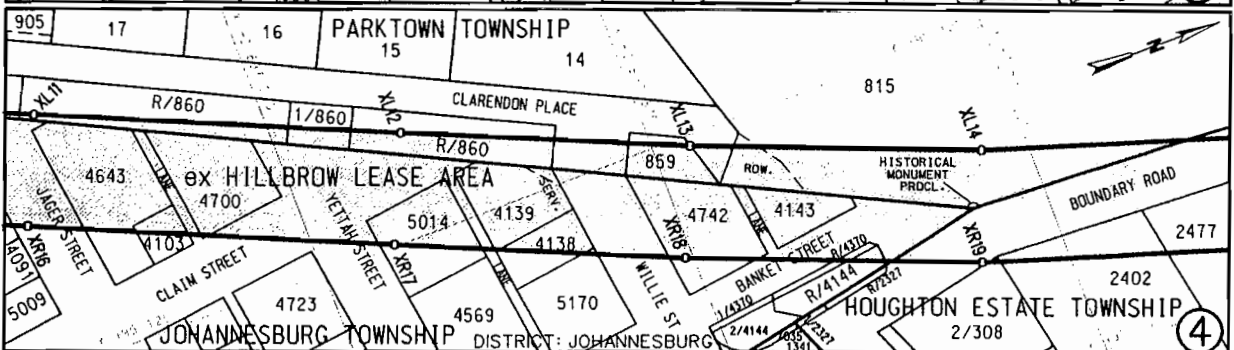
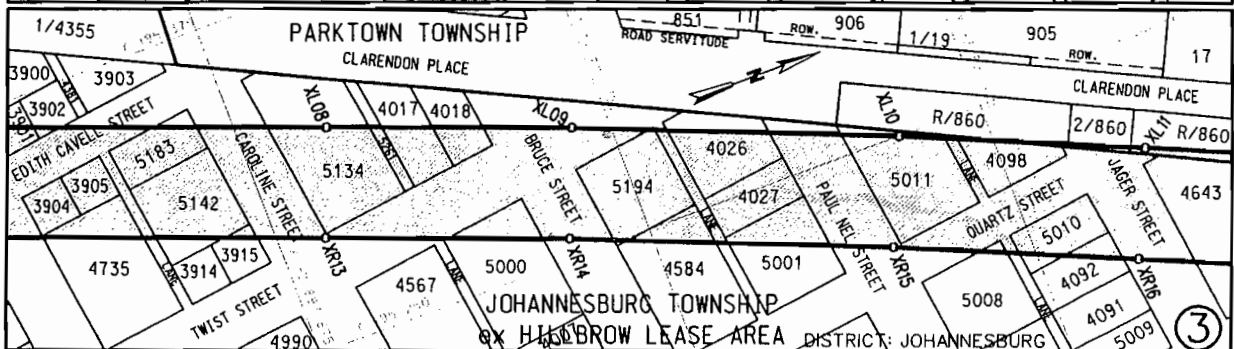
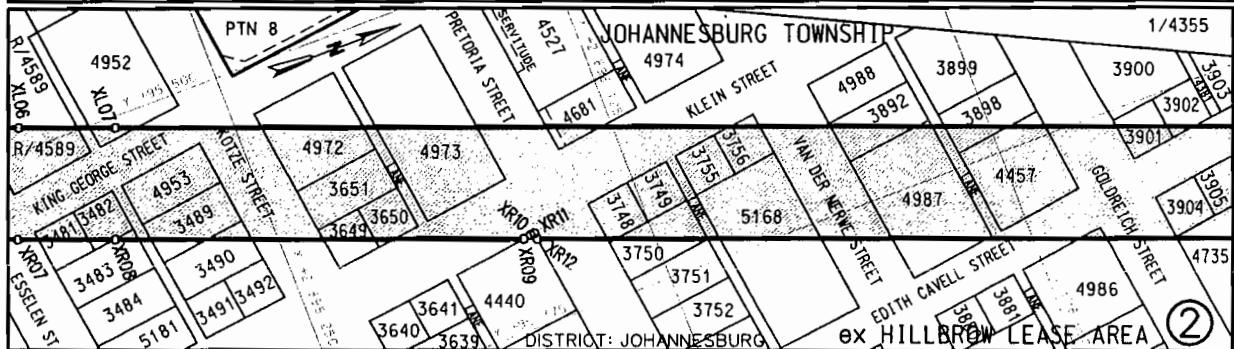
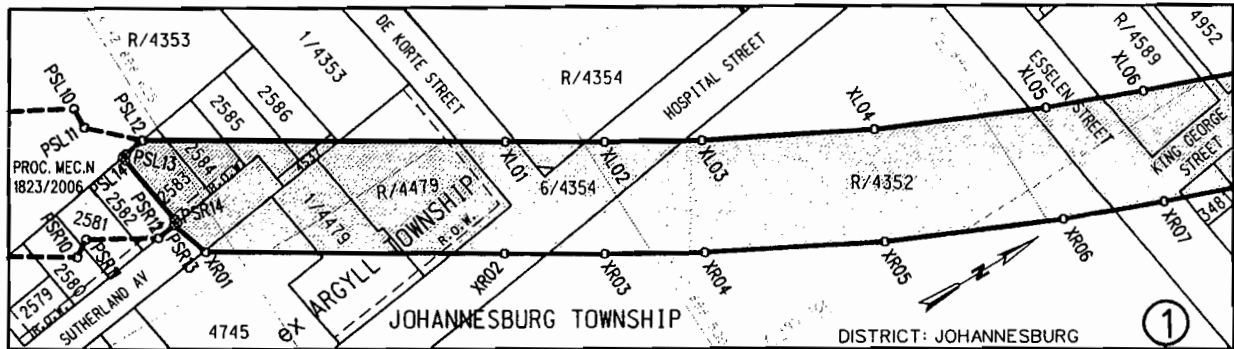
### NOTICE 3342 OF 2010

#### PROCLAMATION OF A PROVINCIAL RAILWAY LINE IN CONNECTION WITH THE GAUTRAIN RAPID RAIL LINK BETWEEN PRETORIA, JOHANNESBURG AND THE O R TAMBO INTERNATIONAL AIRPORT

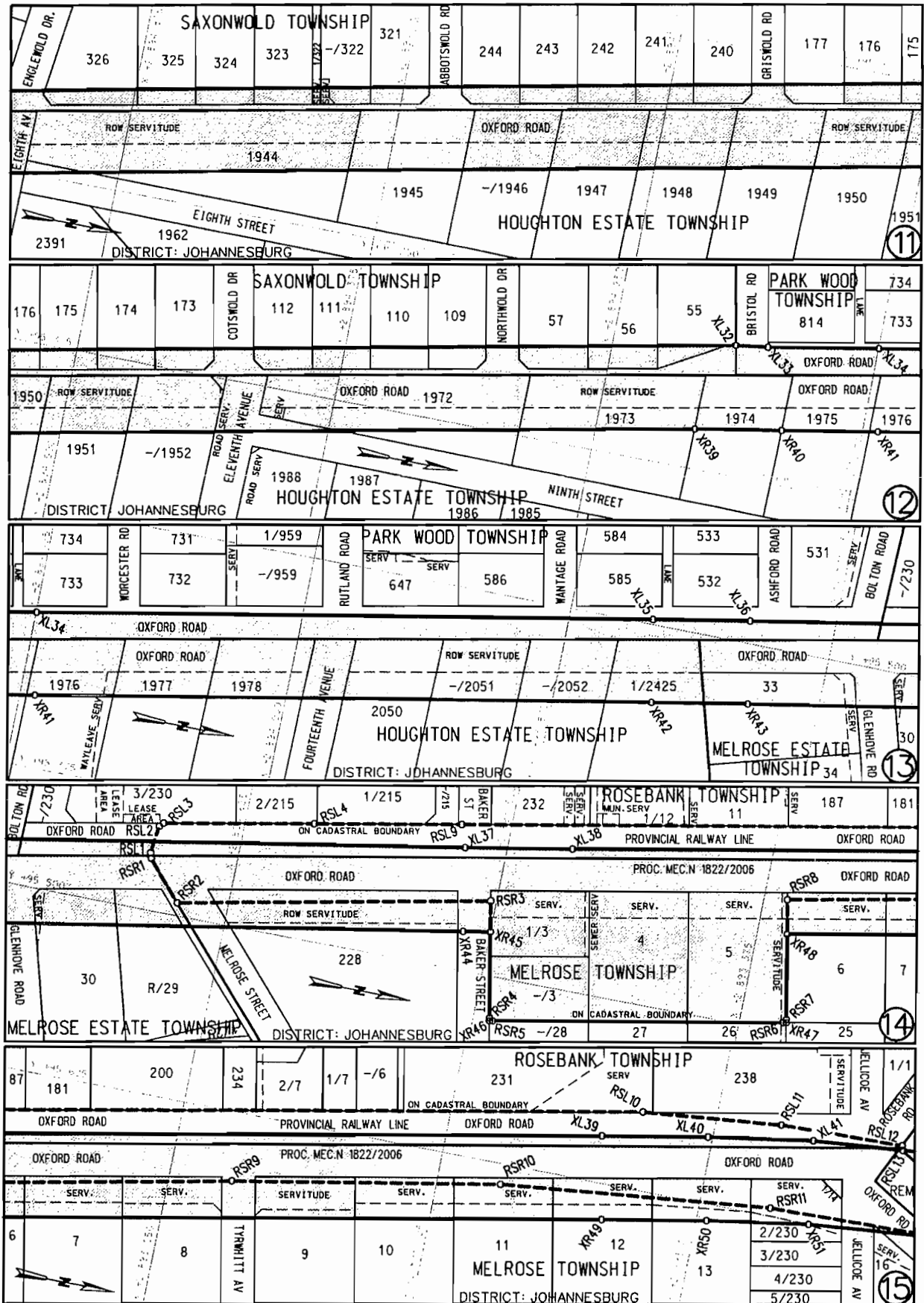
In terms of section 11(1)(b) of the Gauteng Transport Infrastructure Act, 2001 (Act No 8 of 2001), the MEC responsible for provincial roads, hereby proclaims that a provincial railway line at varying depths exists in the tunnel servitude below the land as described and indicated by the figures on the accompanying sketch plans, which show the horizontal alignment of the railway line on the land.

In terms of section 23(6) of the aforementioned act it is hereby stated that plans GRP 03/38/01 Exp – 06 Exp and GRP 03/38/01V – 06V which respectively indicate the horizontal alignment of the railway line on the land, as well as the vertical alignment of the railway line at varying depths in the tunnel servitudes below the land in detail, are available for inspection at the office of the Department of Roads and Transport, First Floor, South Tower, Sage Life Building, 41 Simmonds Street, Johannesburg, during office hours.

Reference: 2/1/7/8 Gautrain













**REFERENCE / VERWYSINGS**

PROCLAIMED RAILWAY LINE IN TUNNEL SERVITUDE  
 GEPROKLAMEERDE SPOORLYN IN TONNEL SERWITUUT



THE FIGURE : PSL12, XL01 - XL67, XL67D, XR78 - XR01, PSR14, PSL14, PSL12.  
 DIE FIGUUR :

REPRESENTS THE PROCLAMATION OF THE PORTION CONCERNED OF THE RAILWAY LINE AT VARYING DEPTHS IN THE TUNNEL SERVITUDE BELOW STANDS 2583-2586, 4537, 4745, PORTION 1, THE REMAINDER OF STAND 4479 AND SUTHERLAND AVENUE IN ARGYLL (JOHANNESBURG), PORTION 1 OF STAND 4353, PORTION 6, THE REMAINDER OF STAND 4354, THE REMAINDERS OF STANDS 4352, 4589, STANDS 4952, 3481, 3482, 3483, 4953, 3489, 3490, 3649, 3650, 3651, 4972, 4973, PORTIONS OF THE STREETS DE KORTE, HOSPITAL, ESSELEN, KING GEORGE, KOTZE, PRETORIA, KLEIN AND PORTIONS OF LANES IN JOHANNESBURG, STANDS 4861; 3748, 3749, 3750, 3755, 3756, 5168, 3892, 4987, 3898, 4457, 4986, 3901, 3902, 3904, 3905, 4735, 5183, 5142, 3915, 5134, 5261; 4017, 4018, 5000, 5194, 4584, 5194, 4026, 4027, 5001, 5011, 4098, 5008, 5010, 4092, 4643, 4103, 4700, 5014, 4138, 4139, 5170, 4742, 4143, THE REMAINDERS OF STANDS 4370, 4144, PORTIONS OF THE STREETS EDITH, VAN DER MERWE, CAVELL, GOLDREICH, CAROLINE, TWIST, BRUCE, PAUL NEL, QUARTZ, JAGER, CLAIM, YETTAH, WILLIE, BANKET AND PORTIONS OF LANES IN HILLBROW (JOHANNESBURG), PORTIONS 1, 2, REMAINDER OF LOT 860, LOTS 859, 815, PORTIONS 3, 15 OF LOT 28, PORTION 14, THE REMAINDER OF ERF 613, LOTS 640, 917, 646, 647, 649, PORTION 1, THE REMAINDER OF LOT 641, PORTION 1, THE REMAINDER OF LOT 642, PORTION 1 OF LOT 643, PORTION 1 OF LOT 645, PORTION OF A LANE AND PORTIONS OF CLAREDON PLACE, THIRD AVENUE, OXFORD ROAD IN PARKTOWN, PORTION 2 OF LOT 308, LOTS 2402, 2477, 313, 310, 2398, 2399, 2375, PORTION 1, REMAINDER OF LOT 311, PORTION 1 OF LOT 116, THE REMAINDER OF LOT 2388, PORTIONS 1, 2 OF LOT 1518, LOTS 1944, 1945, THE REMAINDER OF LOT 1946, LOTS 1947-1951, 1972-1978, 2050, PORTION 1, THE REMAINDER OF LOT 1952, THE REMAINDERS OF LOTS 2051, 2052, PORTION 1 OF LOT 2425, PORTIONS OF BOUNDARY ROAD, OXFORD ROAD, NINTH STREET, EIGHT STREET, EIGHT AVENUE, ELEVENTH AVENUE AND FOURTEENTH AVENUE IN HOUGHTON ESTATE, PORTION 3, THE REMAINDER OF LOT 661, LOTS 663, 644, 688, 524, 525, 489, 490, 652, 675, 681, 343, 263-266, 684, 676, 677, 680 AND PORTIONS OF THE STREETS FIRST, SECOND, THIRD, FOURTH, FIFTH, SIXTH, SEVENTH, EIGHTH, NINTH, TENTH IN KILLARNEY, PORTIONS 1, 2, 5, 6, OF LOT 4, PORTIONS 1, 6, 7, 8 OF LOT 10, LOT 22, PORTIONS 2, 3, 9, THE REMAINDER OF LOT 17, PORTIONS 3, 4, THE REMAINDER OF LOT 21, PORTIONS OF SOUTH AVENUE, OXFORD ROAD AND NORTH ROAD IN RIVIERA, A PORTION OF OXFORD ROAD IN SAXONWOLD EXTENSION 4, ERF 419, PORTION 1, THE REMAINDER OF ERF 504, PORTION 1, THE REMAINDER OF ERF 506, ERVEN 384, 382, 345, 326-323, PORTION 1, THE REMAINDER OF ERF 505, PORTION 1, THE REMAINDER OF ERF 322, ERVEN 321, 244-240, 177-173, 112-109, 57-55, PORTIONS OF EASTWOLD WAY, OXFORD ROAD, RESTANWOLD WAY, ENGLEWOLD DRIVE, ABBOTSWOLD ROAD, GRISWOLD ROAD, COTSWOLD DRIVE AND NORTHWOLD DRIVE IN SAXONWOLD, A PORTION OF OXFORD ROAD IN PARKWOOD, A PORTION OF OXFORD ROAD IN ROSEBANK, ERVEN 33, 30, THE REMAINDER OF ERF 29, PORTIONS OF OXFORD ROAD AND GLENHOVEN ROAD IN MELROSE ESTATE, ERVEN 228, 6-13, 16, PORTION 1 OF ERF 14, PORTION 2 OF ERF 230, PORTIONS OF MELROSE STREET, BAKER STREET, TYRWHITT AVENUE AND OXFORD ROAD IN MELROSE, ERVEN 199, 195, 194, 193, THE REMAINDER OF ERF 202, PORTION 1 OF ERF 200, ERVEN 158, 153, 152, 121, 115, 116, PORTION 1 OF ERF 212, ERVEN 83, 84, 77, 78, 46, 47, 40, 11, 204 AND PORTIONS OF THE ROADS EASTWOOD, SMITH, HUME, KENT, BOMPAS AND CRADDOCK AVENUE IN DUNKELD, THE REMAINDER OF HOLDING 28 AND PORTIONS OF THE ROADS MELVILLE, FIRST, THIRD IN HYDE PARK AGRICULTURAL SETTLEMENT, ERF 600 IN HYDE PARK EXTENSION 116, ERVEN 380 AND 382 IN HYDE PARK EXTENSION 80, ERF 147 AND A PORTION OF THIRD ROAD IN IN HYDE PARK EXTENSION 8, ERVEN 446-451 AND A PORTION OF THIRD ROAD IN HYDE PARK EXTENSION 103, ERF 118, PORTION 6 OF ERF 119, PORTIONS 6 AND 7 OF ERF 120 IN HYDE PARK EXTENSION 2, ERVEN 134, 135 AND A PORTION OF UPFILL ROAD IN HYDE PARK EXTENSION 5, PORTION 2 AND THE REMAINDER OF ERF 494 IN HYDE PARK EXTENSION 15, ERF 126, PORTIONS 1 AND 7 OF ERF 127 IN HYDE PARK EXTENSION 4, PORTIONS 6, 7 AND THE REMAINDER OF ERF 595 IN HYDE PARK EXTENSION 17, ERF 349 IN HYDE PARK EXTENSION 62, THE REMAINDER (OXFORD ROAD), THE REMAINDER OF PORTION 36, PORTIONS 144 AND 754 OF THE FARM ZANDFONTEIN 42-IR, LOTS 33-24, ERF 512, LOTS 19, 18, 17, 15, 14, 13, ERF 505, LOT 9, PORTION 2 OF LOT 454, ERF 511, THE REMAINDER OF LOT 453, LOT 3, THE REMAINDER OF LOT 2, PORTION 1, THE REMAINDER OF LOT 1 AND PORTIONS OF THE ROADS HURLINGHAM, MELVILL, CHAPLIN, HARRIES, FERGUSON, RIVONIA IN ILLOVO, THE REMAINDER OF PORTION 128 AND PORTIONS OF PORTION 354 (RIVONIA ROAD) OF THE FARM SYFERFONTEIN 51-IR, PORTIONS 46-49, 76 (STREET), 79, 70, 71, 72, 24, 17, 78 (STREET), 16, 1-11 OF ERF 113, ERF 117, PORTIONS OF INANDA PLACE AND FEDERAL ROAD IN INANDA EXTENSION 1, A PORTION OF FEDERAL ROAD IN CHISLEHURSTON, PORTIONS 2, 4, 5, 6, 7 OF LOT 40, PORTIONS 1, 3, 5, 10 OF LOT 39, PORTION 5, THE REMAINDER OF LOT 37, PORTIONS 2, 3, 5 OF LOT 254, PORTION 11 OF LOT 38, PORTIONS OF RIVONIA ROAD AND EMPIRE PLACE IN SANDHURST, ERF 247, PORTION 2 OF ERF 105, PORTION 2 OF ERF 104, PORTIONS OF WOODSIDE AVENUE, PINE AVENUE AND SANDHURST DRIVE IN SANDHURST EXTENSION 3, PORTIONS 347, 542 AND THE REMAINDER OF PORTION 7 OF THE FARM ZANDFONTEIN 42-IR AS INTENDED BY THE PUBLICATION THEREOF IN THE PROVINCIAL GAZETTE OF WHICH THE HORIZONTAL AND VERTICAL ALIGNMENT ARE SHOWN IN DETAIL ON PLANS GRP 03/38/01Exp - 06Exp AND 01V - 06V RESPECTIVELY.

KOÖRDINATE LYS/CO-ORDINATE LIST WG 29° KONST./CONST. Y= +/- 0.00 X= +2 800 000.00

PSL12	+95682.341	+98631.954	XL52	+95393.261	+91077.990	XR29	+95104.233	+95720.636
PSL13	+95681.194	+98639.495	XL53	+95381.451	+90798.226	XR30	+95124.904	+95607.181
PSL14	+95679.482	+98640.778	XL54	+95375.294	+90672.920	XR31	+95136.306	+95538.258
			XL55	+95368.319	+90599.599	XR32	+95154.971	+95423.769
XL01	+95613.520	+98523.539	XL56	+95358.902	+90484.151	XR33	+95165.380	+95360.694
XL02	+95594.503	+98493.413	XL57	+95332.744	+90353.565	XR34	+95152.365	+95358.495
XL03	+95576.536	+98463.782	XL58	+95295.123	+90225.760	XR35	+95156.464	+95334.583
XL04	+95547.249	+98409.893	XL59	+95246.347	+90101.781	XR36	+95169.468	+95336.845
XL05	+95521.489	+98354.229	XL60	+95186.798	+89982.603	XR37	+95187.333	+95239.774
XL06	+95508.421	+98322.088	XL61	+95116.942	+89869.158	XR38	+95198.552	+95175.668
XL07	+95495.972	+98289.823	XL62	+95037.328	+89762.335	XR39	+95394.376	+94203.567
XL08	+95325.654	+97844.479	XL63	+94948.578	+89662.972	XR40	+95401.597	+94162.561
XL09	+95294.203	+97763.130	XL64	+94851.389	+89571.846	XR41	+95409.915	+94117.458
XL10	+95249.927	+97655.619	XL65	+94750.417	+89490.190	XR42	+95463.139	+93828.361
XL11	+95214.970	+97575.713	XL66	+94627.744	+89393.899	XR43	+95471.274	+93783.155
XL12	+95162.432	+97456.801	XL67	+94494.092	+89271.063	XR44	+95518.776	+93512.944
XL13	+95121.119	+97361.962	XL67D	+94451.507	+89237.637	XR45	+95521.058	+93500.012
XL14	+95082.859	+97266.024				XR46	+95478.525	+93491.881
XL15	+95041.863	+97139.119	PSR11	+95662.924	+98667.659	XR47	+95505.133	+93352.706
XL16	+95011.340	+97009.296	PSR12	+95649.667	+98645.525	XR48	+95547.465	+93360.799
XL17	+94991.493	+96877.419	PSR13	+95650.622	+98638.415	XR49	+95607.969	+93044.263
XL18	+94982.453	+96744.365	PSR14	+95652.309	+98637.128	XR50	+95617.141	+92995.158
XL19	+94984.280	+96611.015				XR51	+95624.935	+92946.741
XL20	+94996.962	+96478.257	XR01	+95636.327	+98634.033	XR52	+95633.317	+92856.104
XL21	+95013.669	+96376.208	XR02	+95579.757	+98544.988	XR53	+95633.236	+92765.082
XL22	+95033.550	+96274.813	XR03	+95560.550	+98514.561	XR54	+95624.693	+92674.458
XL23	+95129.810	+95797.039	XR04	+95542.024	+98484.003	XR55	+95618.444	+92635.245
XL24	+95143.502	+95728.248	XR05	+95511.508	+98427.852	XR56	+95607.367	+92581.280
XL25	+95164.336	+95613.894	XR06	+95484.666	+98369.852	XR57	+95583.603	+92452.866
XL26	+95175.784	+95544.694	XR07	+95471.188	+98336.707	XR58	+95407.834	+91544.750
XL27	+95194.450	+95430.206	XR08	+95458.611	+98304.111	XR59	+95386.225	+91429.352
XL28	+95205.851	+95361.282	XR09	+95406.929	+98168.974	XR60	+95369.158	+91313.672
XL29	+95226.600	+95247.400	XR10	+95407.311	+98166.113	XR61	+95358.991	+91196.161
XL30	+95231.962	+95220.145	XR11	+95407.510	+98164.626	XR62	+95353.304	+91079.862
XL31	+95238.224	+95181.303	XR12	+95405.145	+98164.310	XR63	+95341.496	+90800.136
XL32	+95437.540	+94191.968	XR13	+95288.293	+97858.768	XR64	+95335.385	+90675.789
XL33	+95439.679	+94176.593	XR14	+95257.000	+97777.825	XR65	+95333.448	+90616.359
XL34	+95449.254	+94124.700	XR15	+95213.165	+97671.385	XR66	+95329.653	+90570.728
XL35	+95502.478	+93835.604	XR16	+95178.382	+97591.879	XR67	+95323.246	+90517.011
XL36	+95510.670	+93790.080	XR17	+95125.844	+97472.967	XR68	+95319.384	+90490.311
XL37	+95558.172	+93519.870	XR18	+95084.283	+97377.554	XR69	+95293.909	+90363.151
XL42	+95673.276	+92857.930	XR19	+95045.328	+97279.861	XR70	+95257.289	+90238.742
XL43	+95673.191	+92763.185	XR20	+95003.331	+97149.853	XR71	+95209.809	+90118.059
XL44	+95664.299	+92668.855	XR21	+94972.061	+97016.857	XR72	+95151.842	+90002.048
XL45	+95653.138	+92602.399	XR22	+94951.729	+96881.755	XR73	+95083.843	+89891.618
XL46	+95646.866	+92574.858	XR23	+94942.467	+96745.447	XR74	+95006.345	+89787.634
XL47	+95622.936	+92445.588	XR24	+94944.339	+96608.837	XR75	+94919.954	+89690.912
XL48	+95447.156	+91537.413	XR25	+94957.331	+96472.834	XR76	+94825.348	+89602.209
XL49	+95425.796	+91422.857	XR26	+94974.338	+96368.920	XR77	+94725.719	+89521.655
XL50	+95408.875	+91308.924	XR27	+94994.338	+96266.913	XR78	+94400.974	+89266.747
XL51	+95398.898	+91193.424	XR28	+95090.598	+95789.139			