

*THE PROVINCE OF
GAUTENG*

*DIE PROVINSIE
GAUTENG*

**Provincial Gazette Extraordinary
Buitengewone Provinsiale Koerant**

Vol. 16

**PRETORIA, 15 MARCH
MAART 2010**

No. 39

IMPORTANT NOTICE

The Government Printing Works will not be held responsible for faxed documents not received due to errors on the fax machine or faxes received which are unclear or incomplete. Please be advised that an "OK" slip, received from a fax machine, will not be accepted as proof that documents were received by the GPW for printing. If documents are faxed to the GPW it will be the sender's responsibility to phone and confirm that the documents were received in good order.

Furthermore the Government Printing Works will also not be held responsible for cancellations and amendments which have not been done on original documents received from clients.

CONTENTS • INHOUD

<i>No.</i>		<i>Page No.</i>	<i>Gazette No.</i>
GENERAL NOTICES			
844	Gauteng Transport Infrastructure Act (8/2001): Transfer of a portion of Provincial Road 2159 to the City of Johannesburg Metropolitan Municipality	3	39
845	do.: Proclamation on the deviation of a portion of Road 766: District Vereeniging.....	5	39
846	do.: Proclamation of the increase in width of a portion of Provincial Road 1313: District Vereeniging.....	8	39

GENERAL NOTICES

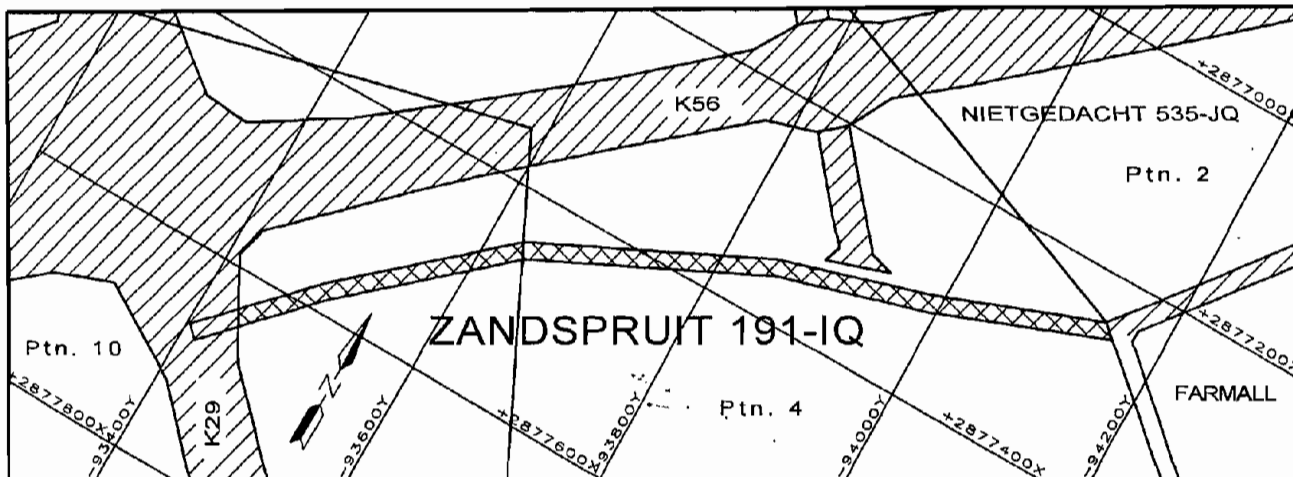
NOTICE 844 OF 2010

TRANSFER OF A PORTION OF PROVINCIAL ROAD 2159 TO THE CITY OF JOHANNESBURG METROPOLITAN MUNICIPALITY

In terms of section 51(2)(a) of the Gauteng Transport Infrastructure Act, 2001 (Act No 8 of 2001) it is hereby notified for general information that the MEC has concluded an agreement with the City of Johannesburg Metropolitan Municipality, whereby the said municipality takes over all responsibility for a portion of provincial road 2159 as depicted on the accompanying sketch plan, and that the said portion of the road is no longer a provincial road for the purposes of the aforementioned act from the date of this notice.

The portion of the said provincial road in question is depicted in detail on plan PRS 78/42/3V which is available for inspection by any interested person at the office of The Department of Roads and Transport, First Floor, South Tower, Sage Life Building, 41 Simmonds Street, Johannesburg, during office hours.

Reference: 2/1/1/2/3/1-2159

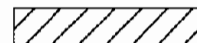


VERWYSING / REFERENCE

PAD OORGEDRA
ROAD TRANSFER



BESTAANDE PAD
EXISTING ROAD



DIE FIGUUR :

VERTEENWOORDIG DIE OORDRAG VAN N GEDEELTE VAN PROVINSIALE PAD 2159 OOR GEDEELTES 4 EN 10 VAN DIE PLAAS ZANDSPRUIT 191-IQ NA DIE STAD JOHANNESBURG METROPOLITAANSE MUNISIPALITEIT SOOS BEDOEL BY AFKONDIGING DAARVAN IN DIE PROVINSIALE KOERANT EN IN DETAIL GETOON OP PLAN PRS78/42/3V

THE FIGURE :

REPRESENTS THE TRANSFER OF A PORTION OF PROVINCIAL ROAD 2159 OVER PORTIONS 4 & 10 OF THE FARM ZANDSPRUIT 191-IQ TO THE CITY OF JOHANNESBURG METROPOLITAN MUNICIPALITY AS INTENDED BY PUBLICATION THEREOF IN THE PROVINCIAL GAZETTE AND DICTED IN DETAIL ON PLAN PRS78/42/3V

BUNDEL NR. / FILE NO. 2/1/1/2/3/1-2159

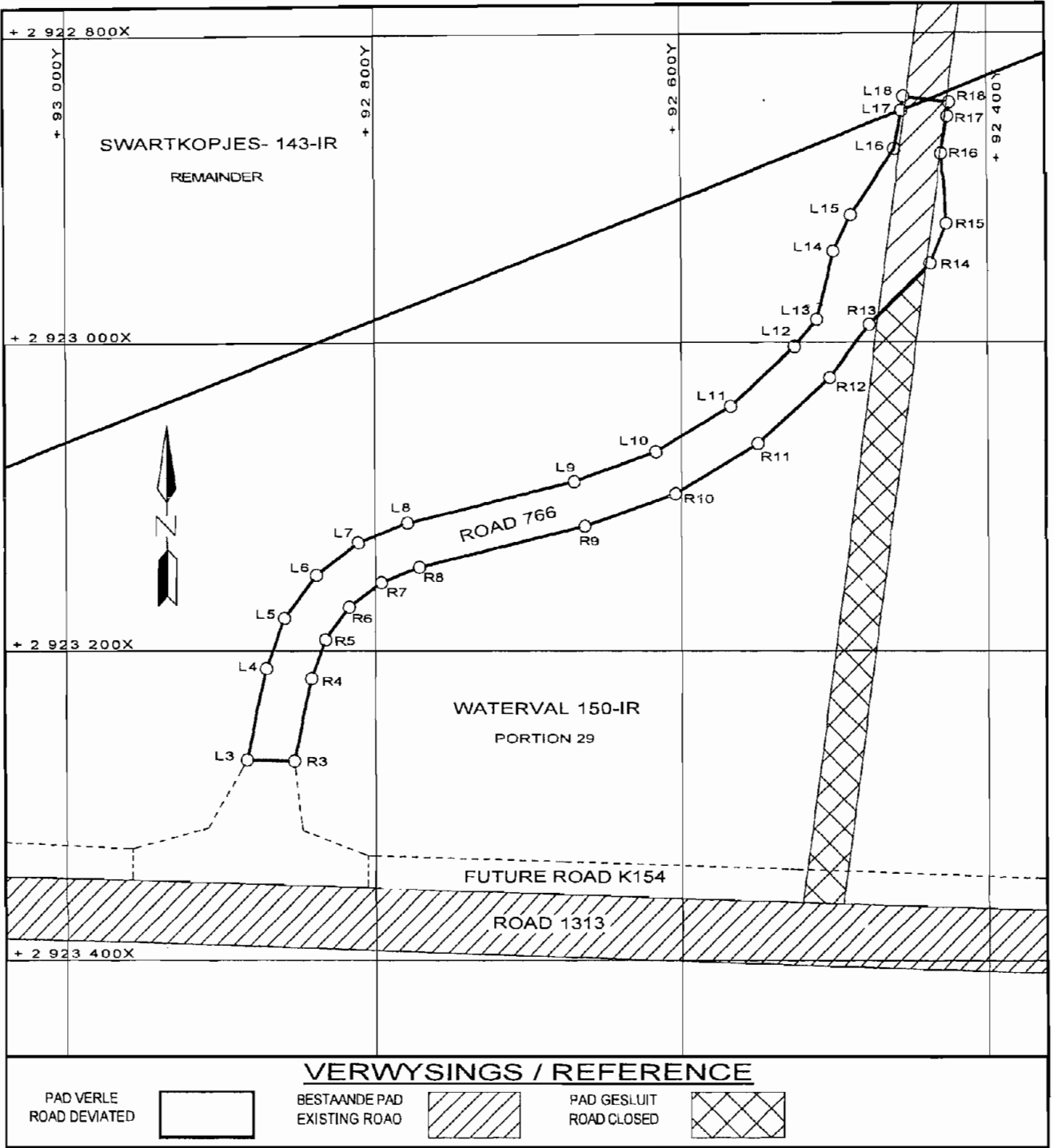
NOTICE 845 OF 2010**PROCLAMATION OF THE DEVIATION OF A PORTION OF ROAD 766: DISTRICT VEREENIGING**

In terms of section 38(5) of the Gauteng Transport Infrastructure Act, 2001 (Act No. 8 of 2001) the MEC for Roads and Transport, hereby proclaims the deviation of a portion of road 766 over Portion 29 of the farm Waterval 150 IR and the Remainder of the farm Swartkopjes 143 IR, and the resultant closure of a portion over Portion 29 of the farm Waterval 150 IR, District Vereeniging, as indicated on the accompanying sketch plans.

Boundary beacons, demarcating the aforementioned deviation of the road, have been placed on the land concerned and plans PRS 86/189/16V and PRS 86/189/18V indicating the said deviation and resultant closure of the road, are available for inspection by any interested person during office hours at the office of the Department of Roads and Transport, Sage Life Building, 41 Simmonds Street, Johannesburg.

MEC Resolution: 006 of 23 March 2009

Reference: 2/1/1/2/3/1-766



DIE FIGUUR L3-L18, R18-R3, L3

VERTEENWOORDIG DIE PROKLAMASIE VAN DIE VERLEGGING VAN DIE BETROKKE GEDEELTE VAN PROVINSIALE PAD 766 OOR GEDEELTE 29 VAN DIE PLAAS WATERVAL 150-IR EN DIE RESTANT VAN DIE PLAAS SWARTKOPJES 143-IR DISTRIK VEREENIGING SOOS BEDOEL BY AFKONDIGING DAARVAN IN DIE PROVINSIALE KOERANT EN IN DETAIL GETOON OP PLANNE PRS 86/189/16V & 18V

THE FIGURE L3-L18, R18-R3, L3

REPRESENT THE PROCLAMATION OF THE DEVIATION OF THE PORTION CONCERNED OF PROVINCIAL ROAD 766 OVER PORTION 29 OF THE FARM WATERVAL 150-IR AND THE REMAINDER OF THE FARM SWARTKOPJES 143-IR DISTRICT VEREENIGING AS INTENDED BY PUBLICATION THEREOF IN THE PROVINCIAL GAZETTE AND SHOWN IN DETAIL ON PLANS PRS 86/189/16V & 18V

BUNDEL NR. / FILE NO. 2/1/1/2/3/1-766

KOÖRDINATE LYS / CO-ORDINATE LIST WG 29° KONST. / CONST. Y = ± 0.000 X = +2 900 000.000

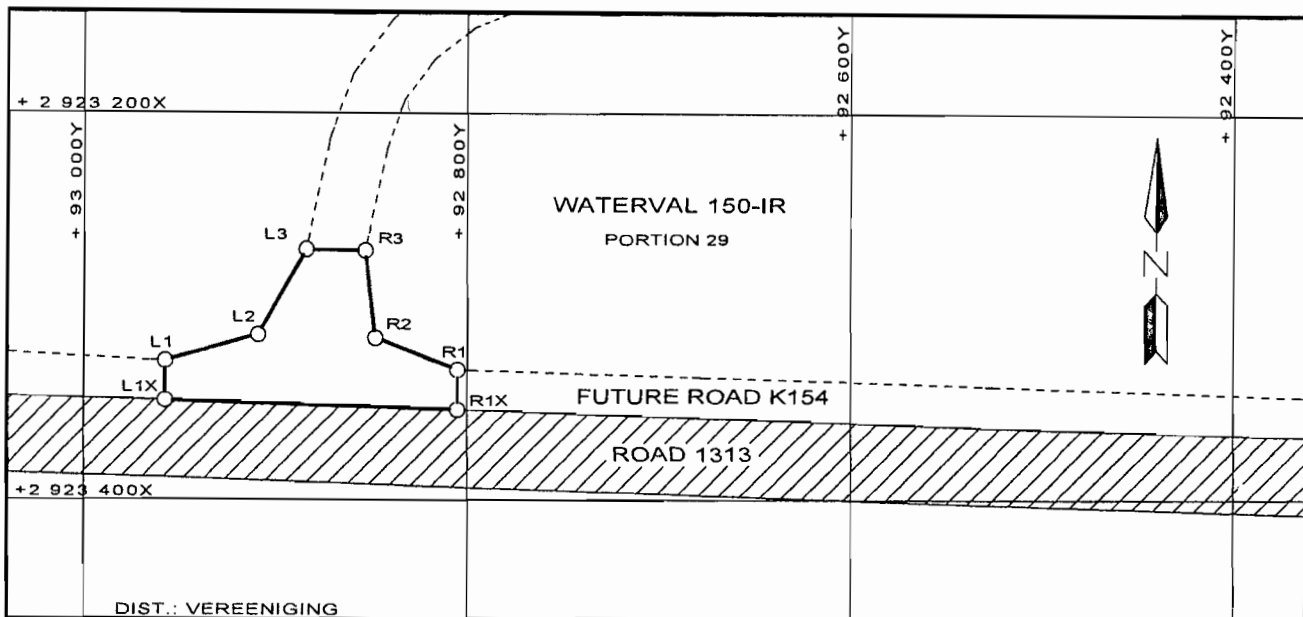
L3	+92 883.75	+23 269.98	L14	+92 501.10	+22 940.89	R8	+92 771.73	+23 145.46
L4	+92 871.07	+23 211.28	L15	+92 489.77	+22 917.17	R9	+92 663.03	+23 118.53
L5	+92 859.09	+23 178.67	L16	+92 460.63	+22 874.92	R10	+92 603.98	+23 097.47
L6	+92 838.60	+23 150.62	L17	+92 456.24	+22 850.24	R11	+92 550.26	+23 065.14
L7	+92 811.18	+23 129.30	L18	+92 455.06	+22 841.30	R12	+92 504.02	+23 022.81
L8	+92 778.94	+23 116.34				R13	+92 477.46	+22 988.67
L9	+92 670.24	+23 089.41	R3	+92 853.20	+23 270.63	R14	+92 438.20	+22 948.99
L10	+92 616.81	+23 070.36	R4	+92 841.75	+23 217.62	R15	+92 427.72	+22 922.99
L11	+92 568.22	+23 041.11	R5	+92 832.64	+23 192.83	R16	+92 430.57	+22 877.86
L12	+92 526.38	+23 002.81	R6	+92 817.07	+23 171.51	R17	+92 426.50	+22 854.18
L13	+92 511.96	+22 985.35	R7	+92 796.23	+23 155.31	R18	+92 425.32	+22 845.24

NOTICE 846 OF 2010**PROCLAMATION OF THE INCREASE IN WIDTH OF A PORTION OF PROVINCIAL ROAD 1313: DISTRICT VEREENIGING**

In terms of section 11(2) of the Gauteng Transport Infrastructure Act, 2001 (Act No. 8 of 2001) the MEC for Roads and Transport, proclaims the increase in the width of a portion of provincial road 1313 over Portion 29 of the farm Waterval 150 IR, District Vereeniging, as indicated on the accompanying sketch plan.

In terms of section 23 (6) of the aforementioned act, it is hereby declared that boundary beacons demarcating the said increase in width of a portion of the above-mentioned provincial road, have been placed on the land and that plan PRS 86/189/16V indicating the land encroached upon is available for inspection by any interested person in the Plan Room of the Department of Roads and Transport, Sage Life Building, 41 Simmonds Street, Johannesburg.

Reference: 2/1/1/2/3/1 – 766
MEC Resolution 006 dated 23 March 2009



VERWYSINGS / REFERENCE

PAD GEPROKLAEMEER
ROAD PROCLAIMED



BESTAANDE PAD
EXISTING ROAD



DIE FIGUUR L1-L3, R3-R1, R1X, L1X, L1

VERTEENWOORDIG DIE PROKLAMASIE VAN DIE BETROKKE GEDEELTE VAN PROVINSIALE PAD K154 OOR GEDEELTE 29 VAN DIE PLAAS WATERVAL 150-IR DISTRIK VEREENIGING SOOS BEDOEL BY AFKONDIGING DAARVAN IN DIE PROVINSIALE KOERANT EN IN DETAIL GETOON OP PLAN PRS 86/189/16V

THE FIGURE L1-L3, R3-R1, R1X, L1X, L1

REPRESENT THE PROCLAMATION OF THE PORTION CONCERNED OF PROVINCIAL ROAD K154 OVER PORTION 29 OF THE FARM WATERVAL 150-IR DISTRICT VEREENIGING AS INTENDED BY PUBLICATION THEREOF IN THE PROVINCIAL GAZETTE AND SHOWN IN DETAIL ON PLAN PRS 86/189/16V

BUNDEL NR. / FILE NO. 2/1/1/2/3/1-766

KOÖRDINATE LYS / CO-ORDINATE LIST WG 29° KONST. / CONST. Y = ± 0.000 X = +2 900 000.000

L1	+92 957.65	+23 327.95	L3	+92 883.75	+23 269.98	R2	+92 847.71	+23 316.27
L1X	+92 958.37	+23 351.82	R1	+92 805.19	+23 332.56	R3	+92 853.20	+23 270.63
L2	+92 908.69	+23 314.43	R1X	+92 805.91	+23 356.43			